



London Borough  
of Hounslow

# Great West Corridor and West of Borough Local Plan Reviews:

## Sustainability Appraisal Scoping Report

July 2016

# Table of Contents

List of Tables.....	2
1. Introduction.....	3
2. Identifying other relevant policies, plans and programmes, and sustainability objectives (Task A1).....	4
3. Collecting Baseline Information (Stage A2) and Identifying sustainability issues and problems (Stage A3).....	7
4. Alterations from Previous Baseline.....	9
5. Developing the SA Framework (Task A4).....	12
6. Conflicts between Sustainability Objectives.....	14
7. Consultation on the Scope of the Sustainability Appraisal.....	15
<b>8. Appendices.....</b>	<b>16</b>
Appendix 1: Plans and Programmes.....	16
Appendix 2A: Social Baseline Statistics.....	32
Appendix 2B: Economic Baseline.....	40
Appendix 2C: Environmental Baseline.....	43
Appendix 3 Heathrow Noise Contours (2015).....	54
Appendix 4 Designated Nature Conservation Areas.....	55
Appendix 5 PTAL Map (2016).....	56

## List of Tables

Table A1.1 International Context.....	6
Table A1.2 National/ Regional Context.....	6
Table A1.3 Local Context.....	7
Table 3: Changes from 2011 Baseline.....	9
Table 4 Sustainable Objectives.....	11
Table 5 Conflicts Table.....	13

# 1 Introduction

- 1.1 This document forms the first stage of the Sustainability Appraisal (SA) for the Great West Corridor and West of Borough Local Plan Review. A separate SA was recently produced for the Local Plan, which was adopted on the 15th September 2015 following public examination.
- 1.2 The Great West Corridor Plan Review is aimed at developing a more focused policy for part of the Borough running between Osterley and Chiswick Roundabout, and in line with policy SV1 of the adopted Local Plan and The West of Borough Plan Review is aimed at developing specific policies for improvements to the West of Hounslow, centred on Feltham Town Centre, in line with policy SV2 of the adopted Local Plan. Together these reviews will refocus the objectives and policies of the Local Plan.
- 1.3 The scoping report forms part of the first stage of this process, by providing updates to relevant plans policies and programmes, updating the baseline context of Hounslow and identifies key sustainability issues.

## Sustainability Appraisals

- 1.4 Sustainability Appraisals derive from E.U directive 2001/42/EC also known as the “Strategic Environmental Assessment”. The key aim of the directive is the integration of environmental considerations into the preparation and adoption of plans and programmes with a view to promoting sustainable development. They are codified into planning law under Section 39(2) of the Planning and Compulsory Purchase Act 2004 which requires (SAs) for new and revised Development Plan Documents (DPDs) and Supplementary Planning Documents (SPDs).
- 1.5 The main purpose of the SA is to ensure that a plan or policy will have been effectively appraised for its sustainability impact. This scoping report proposes a framework against which the Local Plan can be assessed. It is based on the 2011 SA Scoping Report for Hounslow Local Plan and has been informed by an update of the policy context and baseline indicators to reflect changes in policy and baseline information. The sustainability impact of the Local Plan Reviews will then be assessed against these objectives (the Sustainability Appraisal Framework) in the next stages of the SA process.
- 1.6 The SA process must be carried out in concert with the preparation of plans, and contains five stages:
  - **Stage A:** Setting the context and objectives, establishing the baseline and deciding on the scope
  - **Stage B:** Developing and refining alternatives and assessing effects.
  - **Stage C:** Prepare the sustainability appraisal report.

- **Stage D:** Seek representations on the sustainability appraisal report from consultation bodies and the public.
- **Stage E:** Post adoption reporting and monitoring

1.7 This scoping report is concerned the completion of stage A of this process. Stage A can be further broken down into five stage, A1 - A5

- **A1:** Identifying other relevant policies, plans and programmes, and sustainability objectives.
- **A2:** Collecting baseline information.
- **A3:** Identifying sustainability issues and problems.
- **A4:** Developing the SA framework.
- **A5:** Consulting on the scope of the SA.

## **2 Identifying other relevant policies, plans and programmes, and sustainability objectives (Stage A1)**

2.1 The production of the Local Plan was guided by a broad range of policies at different levels, from the International to Local. It is therefore necessary to identify such policies, plans and programmes in order to ascertain the level of influence and the potential relationships each may have upon the development of the Local Plan Reviews. This will ensure that any policy conflicts can be addressed at an early stage in the SA process so that plans can be adapted to reduce or eliminate the conflict.

2.2 The SEA Directive requires that plans include information on the relationships of the Local Plan reviews with other plans and programmes, and therefore is necessary to ensure that the review specifically identifies objectives established at international, EU and national level.

2.3 In addition, the SEA Directive specifically requires environmental protection objectives established at international, European Community or national levels to be taken into account. The Report should provide information on:

- The relationship [of the plan or programme] with other relevant plans and programmes; and
- The environmental protection objectives, established at international, [European] Community or [national] level, which are relevant to the plan, the way those objectives and any environmental considerations have been taken into account during its preparation” (Directive Annex I.a and e).

2.4 The 2014 SA recognised that higher level plans at European and International levels have limited direct significance upon the LDF and their broad perspectives tend to be reflected in lower level plans at national or regional level. This remains the case and because of this, it was decided

that the London Plan and the SA of the London Plan were a sensible starting point for the review of Hounslow's Plans, Programmes and Policies. Therefore the main objective will be to assess the impact of changes and/or new plans on the Local Plan Reviews.

- 2.5 The Local Plan will be the core of this SA due to the nature of these plans being reviews of its objectives, as opposed to being subject to it. In addition the London Borough of Hounslow's key strategic document is the Future Borough: *Hounslow Together's vision, strategy and action plan*.
- 2.6 Tables A1. 1-1.3 below summarise the relevant plans programmes at various levels. Tables A1.2 - 3 are assessed in Appendix 1. In line with the approach identified above, the international context is provided for reference, below.

<b>Table A1.1 International Context</b>
The Johannesburg Declaration on Sustainable Development (2002)
European Spatial Development Perspective (1999)
European Directive on Birds (79/409/EEC)
European Directive on Habitats (92/43/EEC)
European Air Quality Framework (1996/62/EC), First Air Quality Daughter (99/30/EC), Water Framework (2000/60/EC), Second Air Quality Daughter (2000/69/EC), Third Air Quality Daughter (2002/3/EC), Fourth Air Quality Daughter (2004/107/EC),
European Directive on Environmental Noise (2002/49/EC)
European Directive on Waste to Landfill (99/31/EC)
European Landscape Convention (2007)
Aarhus Convention (1998)
The Convention on Biological Diversity - Rio de Janeiro (1992)
Kyoto Agreement (1997)
Strategic Environmental Assessment Directive 2001/42/EC
Renewed EU Sustainable Development Strategy, 2006 and 2009 review
The EU Water Framework Directive (2000/60/EC)
European Union Biodiversity Strategy to 2020 – European Commission

<b>Table A1.2 National/ Regional Context</b>
National Planning Policy Framework 2012
Planning and Compulsory Purchase Act 2004
Localism Act 2011
Equality Act 2010
The Town and Country Planning (Local Planning) (England) Regulations 2012
National Planning Policy Guidance (Various)
UK Sustainable Development Strategy – Securing the Future (2005)
Planning our electric future: a White Paper for secure, affordable and low-carbon electricity, July 2012
National Planning Policy for Waste (2014)
Guidance on Tall Buildings (CABE and English Heritage 2007)
The Changing face of the High Street: Decline and Revival (2013) English Heritage
UK Biodiversity Action Plan (1994)

Working with the Grain of Nature: A Biodiversity Strategy for England (2002) Biodiversity 2020: A strategy for England's wildlife and ecosystem services - UK Post 2010 Biodiversity Framework
European Landscape Convention: guidelines for managing landscapes (2010)
Fair Society, Healthy Lives, The Marmot Review, 2010
Energy Act (2011)
Climate Change Act (2008)
London Plan 2011 Including Early Minor Alterations to the London Plan 2013, Further Minor Alterations 2014 and others.
Homes For London The London Housing Strategy (2014)
Mayor's Transport Strategy (2010)
The Mayors Town Centres SPG (2014)
Clearing London's Air – Mayor's Air Quality Strategy (2010)
Mayor's Economic Development Strategy (2010)
Mayor's Cultural Strategy: Cultural Metropolis (2014)
Accessible London: Achieving an inclusive environment, 2014
Mayor of London Housing SPG (2012)
The Mayor's Sustainable Design and Construction SPG, 2014
The control of dust and emissions during construction and demolition, 2014
Draft Social Infrastructure SPG, 2014
Shaping neighbourhoods: Character and context, 2014
The Mayor's Climate Change Mitigation and Energy Strategy 2011

<b>Table A1.3 Local Context</b>
LBH Local Plan 2015-30
Golden Mile Site Capacity Study (2014)
Feltham Vision and Concept Masterplan (2015)
Heathrow New Garden City: A Vision for the West of the Borough (2015)
Borough Wide Context And Character Study (2014)
Voluntary and Community Strategy 2015
Children and Young People's Plan 2012-15
Community Safety Strategy 2014-17
Corporate Property Strategy 2014-19
Leisure and Culture Strategy 2016-20
West London Waste Plan (2015)
Hounslow Aviation Policy 2006
Hounslow Community Plan 2007-2010
Hounslow Biodiversity Action Plan 2011-16
Joint Strategic Needs Assessment 2014
Strategic Flood Risk Assessment 2015 (Stage 1)
The Way to a Healthier Hounslow 2009-2014
Housing Strategy 2014-18
Future Borough Hounslow Together's vision, strategy and action plan (2011)
The Hounslow Local Implementation Plan for Transport (2011 -2031)
Skills and Employment Strategy 2014 - 2016

- 2.7 In line with regulations, these tables may be updated if any new documents come forward as the plans are prepared.

### **3 Collecting Baseline Information (Stage A2) and Identifying sustainability issues and problems (Stage A3)**

- 3.1 In order to undertake a Sustainability Appraisal (SA), the collection of baseline information is required, which provides a basis for forecasting and monitoring change and assists with the identification of sustainability issues.
- 3.2 The collection of data has been an iterative process with the data collection beginning in 2005 for the first SA Scoping Report, updated in 2007 and now an update in 2016 to bring the baseline as up-to-date as possible.

- 3.3 In line with the guidance the baseline information chosen for this report focuses on where significant effects are likely, building on the baseline data from the Local Plan SA.
- 3.4 Indicators must provide enough data to answer the following questions:
- How positive/negative is the current situation; is the trend better or worse?
  - How far is the current situation from thresholds or targets?
  - Are there any particular sensitivities in the receiving environment?
  - Are the issues raised reversible and/or permanent? (Or reversible and/or temporary)
  - How difficult would offsetting damage be?
  - Are there synergies between indicators or actions over time?
- 3.5 In order to answer these questions the following methodology has been developed:
- Quantified data at a local level (borough or ward);
  - Comparators (local, regional and national);
  - Trends and projections;
  - Issues identified;
  - Potential Impacts;
  - Impacts on the Sustainability Appraisal
- 3.6 Baseline data and analysis can be found in appendix 2 of this document covering the full range of information. Data recorded updates the indicators identified in the Local Plan SA Scoping report 2007, and is split between Social, Economic and Environmental data, in line with the objective of sustainability.
- 3.7 The tables on the following pages contain information from a variety of sources including:
- Official websites (mainly government agency websites containing online databases and publications);
  - Published reports and strategies;
  - Information collected from many departments within the London Borough of Hounslow
- 3.8 Baseline data is presented in Appendix 2 and divided into three categories (social, economic and environmental) to aid the analysis of what data we have and need for the sustainability objectives.

## 4 Alterations from Previous Baseline

- 4.1 The baseline data summarised in the tables at appendix 2 have some alterations from the 2011 scoping report. The general reason for such gaps is based on the unavailability of relevant figures or baseline data, but it also reflects additional pertinent data relating to the Local Plan Reviews.

**Table 3: Changes from 2011 Baseline**

Indicator	Addition, Removal or Amalgamation	Reasons
Social Baseline Data Changes		
Migration (Borough, London, International)	Addition	London has substantially high levels of immigration and is a critical component of population growth.
Number of Males Females	Amalgamation	Combined with Proportion and age of population to reduce complexity.
Life Expectancy	Addition	Critical long term dataset.
Respiratory Diseases	Addition	Available current statistics and a key health indicator for the borough related to traffic and transport.
Obesity Rates	Addition	Available, current statistics and a key indicator related to access open space and sports facilities.
% and number of working age	Amalgamation	Combined with proportion and age of population to reduce complexity
Number of Languages Spoken in School	Removal	Lack of new data available at time of study.
Racist and Religious Hate Crime	Removal	Not pertinent to sustainability as highly specific – crime statistics are more suitable for strategic level of SA.
Number of people who claim disability allowance	Removal	Lack of reliable data at time of study.
Homophobic Crime Reported	Removed	Not pertinent to sustainability as highly specific – crime statistics are more suitable for strategic level of SA.
Housing Target and OAN	Addition	Highly pertinent dataset for understanding current housing pressure
New Homes Built	Removed	See below.
Net Increase in new Housing and Tenure	Addition	Highly pertinent dataset for understanding current housing pipeline and development.
Housing Tenures	Addition	Highly pertinent dataset for understanding trends in use of current housing stock.
Residential Density	Removal	Lack of new data available at time of study.
% of people who feel that people from different ethnic backgrounds get on well together	Removal	Lack of new data available at time of study.
Projections of School Children	Addition	Data is highly pertinent to new planning work to ensure needs of population are met.
Location of Schools	Removal	Not pertinent to sustainability as highly specific – crime statistics are more suitable for strategic level of SA.
Number of Nursery Children	Removal	Not pertinent to sustainability as highly specific – crime statistics are more suitable for strategic level of SA.

Number of primary school children and % in performance categories	Removal	Lack of access to dataset at time of study.
Number of secondary school children and % in performance categories	Removal	Lack of access to dataset at time of study.
Number of special school children and % in performance categories	Removal	Lack of access to dataset at time of study.
Visits to a Council run leisure facility	Removal	Lack of new data available at time of study.
Visits to a Council run library	Removal	Lack of new data available at time of study.
Visits to a museum within the borough	Removal	Lack of new data available at time of study.
Economic Baseline Data		
Job Centre Plus Vacancies	Removal	Lack of new data available at time of study.
Out of Work Benefits	Removal	Replaced by Claimant Count as more suitable to strategic level of SA.
Claimant Count	Added	See Above
Loss of employment floor space	Removal– See Below	See below
New Employment Floor space	Removal – See Below	See below
Net change in employment floor space	Addition	Net figures used to reduce complexity and give a more effective understanding of change.
Permitted Development (PD) Office – Resi development	Addition	New right established in 2013 and has significant impact on employment and housing.
S106 contributions for regeneration purposes	Removal	Lack of new data available at time of study and S106 is being phased out in change for CIL
<b>CIL Contributions</b>	<b>Added</b>	<b>Replaces S106 for provision of infrastructure over Plan period.</b>
Environmental Baseline Data		
Groundwater Protection	Addition	Pertinent dataset regarding development of land within the borough
Land Quality	Addition	Pertinent dataset regarding development of land within the borough
SAP rating of development	Addition	Pertinent dataset regarding the efficiency of buildings.
S106 contributions for nature conservation	Removal	Lack of new data available at time of study and S106 is being phased out and replaced by CIL
Mode of travel for work and education	Removal	Lack of new data available at time of study.
Cycling routes in the borough	Addition	Pertinent data regarding modes of travel for new developments.

4.2 The above table provides reasoning for when statistics have been altered, and aims to reflect the changing nature of statistics available.

- 4.3 The Social Baseline has altered to add figures on migration, which are considered critical. Equally, housing figures have been added for similar reasons. Schools data taken from Acorn has not been available during this scoping exercise therefore was removed. Crime statistics have been amended to reflect general crime rates opposed to specific crimes which due to the strategic nature of Sustainability Appraisals.
- 4.4 The Economic Baseline has been amended to include prior approval (Class J) Office-to-Residential as this is considered an important new piece of planning legislation with impacts on housing and employment space. Changes to government led benefits schemes mean that statistics are unlikely to be available in the future and have therefore been removed. It is considered that the application of net change in floorspace is more effective and succinct than separate loss and gain datasets for the purposes of the SA.
- 4.5 The Environmental Baseline has been updated to consider the implications of the Plan Reviews of the West of the Borough on land quality and open space.
- 4.6 It is recognised that in some instances within the baseline data, assumptions have been made for future data projections. Where this occurs, the dataset has been assessed against historic trends and patterns, which implicitly assume their continuation. It is acknowledged that whilst historic trends are indicative of future situations, this approach fails to take into account alternative factors which have an impact on future baseline.

## 5 Developing the SA Framework (Stage A4)

- 5.1 Having developed a baseline for the situation in Hounslow, the next stage is to define the broad sustainability objectives from this data for the borough which the Plan Reviews will be monitored against.
- 5.2 The Sustainability Appraisal for the Local Plan (2011) used a set of 15 Objectives which built upon 27 Objectives identified in 2007, streamlining these in line with Hounslow's strategy 'Future Borough'. These objectives are considered to be robust and still highly relevant to the preparation of the Local Plan reviews and so are unchanged.
- 5.3 These objectives are necessarily strategic and high level but constitute a balance of aims which will provide a sustainable future for the borough. In order to understand performance towards these objectives, a basket of statistics taken from the Baseline is used and is set out in Table 4 below:

**Table 4 Sustainable Objectives**

Objective	Chosen Indicators
1) To maintain and improve the health of the population	<ul style="list-style-type: none"> <li>- Standardised Mortality Rate (SMRs)</li> <li>- Life expectancy</li> <li>- Premature deaths</li> <li>- % Population with Long Term Illness</li> <li>- Respiratory Disease</li> <li>- Obesity Rates</li> </ul>
2) To reduce crime and the fear of crime	<ul style="list-style-type: none"> <li>- Number of crimes</li> <li>- Index of deprivation</li> <li>- Secured by Design</li> </ul>
3) To ensure that everyone has the opportunity to live in a decent, sustainably constructed and affordable home	<ul style="list-style-type: none"> <li>- Housing Target and OAN</li> <li>- Net Increase in New Housing and Tenure</li> <li>- Number of households and average number of persons per household</li> <li>- Number of homeless Persons</li> <li>- Housing Tenures</li> </ul>
4) To improve opportunities for developing community cohesion and increase understanding and learning between communities	<ul style="list-style-type: none"> <li>- Number of languages spoken in schools</li> <li>- Number of ethnic minority persons and % of total population</li> <li>- Migration</li> </ul>
5) To ensure equality of opportunity through fair and equal access to services (health care, education, skills training, employment, shopping, transport), culture, leisure and recreation for all residents	<ul style="list-style-type: none"> <li>- Number and % of economically active people</li> <li>- Unemployment</li> <li>- Change in public transport accessibility</li> <li>- % and number of persons within each qualification category</li> <li>- Median Household Income and Low Wages</li> <li>- % and Number within each qualification category</li> </ul>

6) To minimise the need to travel, increase the use of sustainable transport modes. (walking, cycling, and public transport)	<ul style="list-style-type: none"> <li>- Number of cars owned per number / % of households</li> <li>- Mode of travel for work and education</li> <li>- Road traffic collisions</li> </ul>
7) To ensure the efficient use of resources to reduce negative contributions to and mitigate impacts of climate change.	<ul style="list-style-type: none"> <li>- Developments approved in designated open space</li> <li>- Recycling and composting</li> <li>- Waste sent to landfill</li> <li>- Carbon Dioxide emission levels</li> </ul>
8) To improve the quality of where people live through sustainable regeneration that makes use of existing asset.	<ul style="list-style-type: none"> <li>- Size of open spaces and publicly accessible open spaces</li> <li>- Green Flag Award Scheme</li> <li>- Number and hectares of designated nature conservation areas</li> <li>- Land Quality</li> <li>- Heathrow Airport Noise Emissions</li> <li>- Green Belt</li> </ul>
9) To maintain and enhance biodiversity. (Areas of nature conservation interest, wildlife and habitats).	<ul style="list-style-type: none"> <li>- Improve local biodiversity</li> <li>- Sites of Special Scientific Interests (SSSIs)</li> <li>- Special Protection Areas (SPAs) and Ramsar sites</li> <li>- Number and hectares of designated nature conservation area</li> </ul>
10) To improve air quality in the borough.	<ul style="list-style-type: none"> <li>- Levels of pollutants / Progress towards meeting Air Quality Action Plan targets</li> </ul>
11) To reduce noise pollution.	<ul style="list-style-type: none"> <li>- Heathrow noise emissions</li> <li>- Noise contours of Heathrow</li> </ul>
12) To promote high quality urban design and the use of sustainable construction.	<ul style="list-style-type: none"> <li>- Building for Life</li> <li>- Secured By Design</li> </ul>
13) To conserve and enhance the quality and character of the borough's landscape and townscape, including historic environments.	<ul style="list-style-type: none"> <li>- Conservation areas (built environment)</li> <li>- Listed buildings and Buildings at Risk</li> <li>- Number and hectares of designated nature conservation areas</li> <li>- Scheduled Ancient Monuments and Archaeological Priority Areas</li> </ul>
14) To provide opportunities and benefits to the local economy, especially in town centres.	<ul style="list-style-type: none"> <li>- Number of hotel rooms</li> <li>- Rates of business registration / deregistration</li> <li>- % and number of persons within each qualification category</li> </ul>
15) To maintain and enhance the importance of Hounslow as an employment centre in the West – London and London-wide context through attracting new economic development that provides a range of jobs in appropriate locations.	<ul style="list-style-type: none"> <li>- Index of deprivation</li> <li>- Loss of employment floorspace</li> <li>- New employment floorspace completed</li> <li>- Out of work benefits</li> <li>- Number and % of persons in employment by sector</li> <li>- Permitted Development (PD) Office – Residential development.</li> </ul>

5.4 The objectives outlined in table 4 above will need to be considered in light of the changing circumstances in the borough but are considered to continue to meet the objective of the SA at the time of this scoping report.

## 6 Conflicts between Sustainability Objectives

- 6.1 A key element of assessing the objectives is to understand how synergies and conflicts between these objectives will add up; for example the need for new housing versus provision for biodiversity. This also ensure and inconsistencies are identified.

**Table 5 - Conflicts Table:**

SA Objectives																	
Social	Env	Econ	1	2	3	4	5	6	7	8	9	10	11	12	13	14	15
✓			1														
✓			2	+													
✓	✓	✓	3	+													
✓			4	+													
✓			5	+	0	+	+										
✓	✓		6	+	0	0	0	+									
	✓	✓	7	+	0	+	0	0	+								
✓	✓	✓	8	+	+	+	0	+	+	+							
	✓		9	+	0	0	0	0	+	+	+						
	✓		10	+	0	0	0	0	+	+	+	+					
✓	✓		11	+	0	+	0	0	+	0	+	0	+				
✓	✓		12	0	+	+	0	0	0	+	+	+	+				
✓	✓		13	+	+	+	0	0	+	0	+	+	0	0	+		
✓	✓	✓	14	0	0	+	+	+	+	0	+	-	-	-	0	+	
✓		✓	15	0	0	0	0	+	+	-	+	-	-	?	0	+	+

+ Positive impact  
 - Negative impact  
 0 No relationship between Objectives  
 ? Impact may be positive and/or negative

- 6.2 As the above table indicates, there are conflicts between some of the objectives, but these are in the minority. Conflicts can be mitigated between objectives and it is perhaps unsurprising that the majority of these continue to occur between economic and environmental concerns. These must be carefully balanced as part of the development of the Plan Reviews.

## **7 Consulting the relevant authorities on the scope of the SA (Stage A5)**

- 7.1 As required by the Strategic Environmental Assessment (SEA) Directive, the Scoping Report should be referred to the three statutory Consultation Bodies with environmental responsibilities:
- Historic England
  - Natural England
  - Environment Agency
- 7.2 We are now at the stage where we wish to obtain the views of these agencies, as well as other interested organisations and parties, on this scoping report. Consultation at this stage will help to make sure that the SA will be as comprehensive and robust as possible and meet statutory requirements.
- 7.3 It is available for consultation for a period of five weeks in order to comply with the SEA Regulations (The Environmental Assessment of Plans and Programmes Regulations 2004,
- 7.4 12(6).Following the period of consultation any comments on the Scoping Report will be considered and used to look at how the proposed SA should be revised to respond to them.
- 7.5 The emerging draft objectives of the Local Plan Reviews will be tested against the SA objectives set out in this Scoping Report. This will allow an assessment of the relationship between the Local Plan Reviews objectives and sustainability objectives, and highlight any issues or inconsistencies.
- 7.6 Following from an assessment of the relationship between the Local Plan Reviews and sustainability objectives, an appraisal of emerging policy options for the Local Plan Reviews will be carried out (and, separately, consultees will be consulted on the options being considered in the Local Plan Reviews).
- 7.7 The draft SA Report will then be produced (which will include an assessment of the options appraised) alongside the preferred options for the Local Plan Reviews, which will then be subject to public consultation. The Final SA Report will be published alongside the (pre-submission) version of the Local Plan Reviews.

# Appendices

## Appendix 1: Plans and Programmes

Table A1.1 International Plans and Programmes	Summary	Relevance to Local Plan Reviews / How they should respond, and Implications for SA
<p>The Johannesburg Declaration on Sustainable Development (2002)</p> <p><a href="http://c40summitiohannesburg.org/">http://c40summitiohannesburg.org/</a></p>	<p>Johannesburg reaffirmed previous major agreements (Stockholm &amp; Rio 1992) which added several new aims;</p> <p>Integrate energy into country-led poverty reduction processes;</p> <p>Remove market barriers and create a level playing field for renewable energy and energy efficiency;</p> <p>Greater resource efficiency (incl. decoupling economic growth from environmental degradation);</p> <p>Support business innovation and take-up of best practice in technology and management; work on waste and producer responsibility.</p>	<p>Highly relevant regarding need for new development to be built to sustainable standards with high energy efficiency.</p> <p>Reviews should respond by committing new developments to better standards and take account of opportunities for renewable energy generation and waste management. Notable that much of this is secured via existing policies in the London Plan (2015) and needs to be accounted for to ensure soundness.</p> <p>SA needs to take account and place emphasis on these goals.</p>
<p>The Convention on Biological Diversity - Rio de Janeiro (1992)</p> <p><a href="https://www.cbd.int/convention/text/">https://www.cbd.int/convention/text/</a></p>	<p>Agreement focuses on biological diversity, and to develop and implement strategies for sustainable use and protection of biodiversity and the sustainable use of resources.</p>	<p>Focus on protection of biodiversity resources in the borough, and use of sustainable construction.</p>
<p>UN Framework Convention on Climate Change (UNFCCC) (Kyoto) Agreement (1997).</p> <p>Doha amendment to the Kyoto Protocol on Climate Change (2012).</p> <p><a href="http://unfccc.int/essential_background/convention/items/2627.php">http://unfccc.int/essential_background/convention/items/2627.php</a></p> <p><a href="http://unfccc.int/essentialbackground/kyotoprotocol/items/2830.php">http://unfccc.int/essentialbackground/kyotoprotocol/items/2830.php</a></p>	<p>Achievement of stabilization of greenhouse gas concentrations in the atmosphere at safe levels by 2020. The Kyoto Protocol came into force in February 2005.</p> <p>The UK is bound to reductions of 20% below the base year by 2020.</p>	<p>The Local Plan Reviews must consider GHG emission reductions. They should respond and contribute to national reductions through building materials and energy consumption of new developments.</p> <p>The SA must consider how these targets will be contributed to by the Local Plan Reviews.</p>

<p>European Spatial Development Perspective (1999)</p> <p><a href="http://ec.europa.eu/regional_policy/sources/docoffic/official/reports/pdf/sumen.pdf">http://ec.europa.eu/regional_policy/sources/docoffic/official/reports/pdf/sumen.pdf</a></p>	<p>The ESDP is the key document for spatial planning published by the E.U. It is non-binding but encourages a balanced, and sustainable approach to planning, especially by linking planning policies with other policy areas.</p>	<p>Highly relevant, encourages the development of complete local plan reviews which take objectives from the full range of social, economic and environmental policy areas.</p> <p>Reviews should respond by ensuring they take in a broad range of needs and strategies at the national and international levels. SA fundamentally encourages this approach and so can be seen as a response to the ESDP</p>
<p>European Directive on Birds (79/409/EEC)</p> <p><a href="http://ec.europa.eu/environment/nature/legislation/birdsdirective/index_en.htm">http://ec.europa.eu/environment/nature/legislation/birdsdirective/index_en.htm</a></p>	<p>The Birds Directive addresses the conservation of all wild birds throughout the European Union, including marine areas, and covers their protection, management, control and exploitation.</p> <p>It applies to the birds, their eggs, nests and habitats. It places a broad requirement on Member States to take necessary measures to maintain the populations of all wild birds at levels determined by ecological, scientific and cultural needs. In doing so, member states must also consider economic and recreational needs.</p>	<p>The Birds directive is highly relevant to the Local plan reviews, especially the West of Borough due to the number of environmentally sensitive sites.</p> <p>Reviews should be aware of the main provisions of the Birds Directive as well as the wide range of other statutory and non-statutory activities which support the Bird Directive's implementation in the UK.</p> <p>The SA needs to consider how these can be best implement in balance with other sustainability objectives.</p>
<p>European Directive on Habitats (92/43/EEC)</p> <p><a href="http://ec.europa.eu/environment/nature/legislation/habitatsdirective/indexen.htm">http://ec.europa.eu/environment/nature/legislation/habitatsdirective/indexen.htm</a></p>	<p>The EC Directive on the Conservation of Wild Birds (The Birds Directive, 79/409/EEC) and the EC Directive on the Conservation of Natural Habitats and Wild Flora and Fauna (The Habitats Directive, 92/43/EEC). Together, they establish a legislative framework for protecting and conserving Europe's wildlife and habitats.</p>	<p>The requirements of the Habitats Directive need to be fully taken into account by the Local Plan reviews.</p> <p>The reviews will need to consider how it can protect and improve habitats.</p>
<p>European Air Quality Framework (1996/62/EC), First Air Quality Daughter (99/30/EC), Water Framework (2000/60/EC), Second Air Quality Daughter (2000/69/EC), Third Air Quality Daughter (2002/3/EC), Fourth Air Quality Daughter (2004/107/EC)</p>	<p>The Directive set objectives for ambient air pollution and provides a framework for subsequent ("daughter") Directives to set long-term air quality objectives and limit values for various pollutants to be met by various dates between 2001 and 2010.</p> <p>This new (2008) Directive includes the following key elements:</p>	<p>Local measures to manage and improve air quality are the responsibility of the Mayor and the London boroughs. The Mayor of London has published regular air quality strategies, most recently in 2010.</p> <p>The Local Plan reviews will need to take these into account, especially in areas where there are concerns over Air Quality.</p>

<p><a href="http://ec.europa.eu/environment/air/quality/legislation/existingleg.htm">http://ec.europa.eu/environment/air/quality/legislation/existingleg.htm</a></p>	<p>That most of existing legislation be merged into a single directive (except for the fourth daughter directive) with no change to existing air quality objectives;</p> <p>New air quality objectives for PM2.5 (fine particles) including the limit value and exposure related objectives – exposure concentration obligation and exposure reduction target;</p> <p>The possibility to discount natural sources of pollution when assessing compliance against limit values;</p> <p>Possibility for time extensions of three years (PM10) or up to five years (NO2, benzene) for complying with limit values, based on conditions and the assessment by the European Commission.</p>	<p>The SA will need to consider the balance of air quality with development and this is enshrined in one of the Objectives.</p>
<p>European Directive on Environmental Noise (2002/49/EC)</p> <p><a href="http://ec.europa.eu/environment/noise/directive_en.htm">http://ec.europa.eu/environment/noise/directive_en.htm</a></p>	<p>Aimed at requiring competent authorities in Member States to produce strategic noise maps on the basis of harmonised indicators, to inform the public about noise exposure and its effects, and to draw up action plans to address noise issues.</p>	<p>Environmental Noise is a significant issue within the borough and is recognized through an objective, and is also forms part of the London Plan</p> <p>The Local Plan Reviews will need to carefully consider how it fulfill these objectives in line with the London Plan and national guidance.</p> <p>The SA will need to consider Environmental Noise in balance with mitigation and planning impacts.</p>
<p>European Directive on Waste to Landfill (99/31/EC)</p> <p><a href="http://ec.europa.eu/environment/waste/landfill_index.htm">http://ec.europa.eu/environment/waste/landfill_index.htm</a></p>	<p>The objective of the Directive is to prevent or reduce as far as possible negative effects on the environment, in particular on surface water, groundwater, soil, air and human health, from the landfilling of waste, by introducing stringent technical requirements for waste and landfills.</p>	<p>The West London Waste Plan enshrines the objectives of the Directive and will bind the reviews to certain policies Along with the Mayor’s Municipal Waste Management Strategy.</p> <p>The SA must address the issue of sustainable waste disposal in the borough. Careful consideration will have to be given to the location of these facilities due to the potential impacts from different waste management activities.</p>

		Key requirements will include the best practical environmental option is used. The Borough must also attempt to minimise transport associated with waste.
European Landscape Convention (2007) <a href="http://www.coe.int/en/web/landscape/home">http://www.coe.int/en/web/landscape/home</a>	The European Landscape Convention (ELC) requires “landscape to be integrated into regional and town planning policies and in cultural, environmental, agricultural, social and economic policies, as well as any other policies with possible direct or indirect impacts on landscape”. It is designed to ensure plans take account of these needs.	The Landscape Convention has been codified in the U.K by a set of Guidelines. These are discussed in the National Policy Section.
Aarhus Convention (1998) <a href="http://ec.europa.eu/environment/aarhus/">http://ec.europa.eu/environment/aarhus/</a>	The convention elaborates on the Rio Declaration, and aims for public participation in environmental issues and access to information on the environment held by public authorities.	Hounslow observes The Environmental Information Regulations 2004 (EIR2004) and has held workshops on its implementation. These regulations primarily relate to the Environmental Impact Assessment, discussed below.
Strategic Environmental Assessment Directive 2001/42/EC (Initial Directive of 1985 85/337/EEC and amendments codified by 2011/92/EU Assessment of the Effects of certain Public and Private Projects on the Environment) <a href="http://ec.europa.eu/environment/eia/eia-legalcontext.htm">http://ec.europa.eu/environment/eia/eia-legalcontext.htm</a>	Strategic Environmental Assessments are required for major development in order to protect the environment by integrating them into the planning process. The Directive requires the environmental assessment of plans and programmes which are likely to have significant effects on the environment.	The Local Plan Reviews will likely need to be assessed under this legislation and so should consider from the outset how they will meet its needs.  The SA needs to consider how it can balance the needs of sustainable development against the Assessment in order to maintain sustainability in economic and social spheres.
Renewed EU Sustainable Development Strategy (2006) and 2009 review <a href="http://ec.europa.eu/environment/eussd/">http://ec.europa.eu/environment/eussd/</a>	Provides a definition of sustainable development “to meet the needs of the present generation without compromising those of future generations.” The priorities are to: combat climate change; ensure sustainable transport; address threats to public health; manage natural resources more responsibly and stop biodiversity decline; combat poverty and social exclusion; and meet the challenge of an ageing population.	The EU Sustainable Development Strategy brings the Kyoto, and other international agreements into the E.U context. The Plan Reviews must consider the broad range of benefits and costs of various strategies in contributing or diverging from sustainable development.  This is a key pillar of the SA and must be taken into consideration in the preparation of later stages.
The EU Water Framework Directive (2000/60/EC)	Establishes a comprehensive framework for the protection of inland surface waters, transitional waters, coastal waters and groundwater and	The Plan Reviews should be aware of the Directive’s requirements and consider implications for the Borough in terms of river management, specifically in terms of

<a href="http://ec.europa.eu/environment/water/water-framework/indexen.html">http://ec.europa.eu/environment/water/water-framework/indexen.html</a>	<p>promotes more sustainable water management and use.</p>	<p>reductions and prevention of contaminants reaching groundwater sources.</p> <p>The SA will need to consider how these can be best mitigated, most likely in terms of economic development.</p>
<p>European Union Biodiversity Strategy to 2020</p> <a href="http://ec.europa.eu/eenvironment/nature/biodiversity/comm2006/2020.htm">http://ec.europa.eu/eenvironment/nature/biodiversity/comm2006/2020.htm</a>	<p>The EU Biodiversity strategy provides six main targets, and 20 actions to help Europe reach its goal. Biodiversity loss is an enormous challenge in the EU, with around one in four species currently threatened with extinction and 88% of fish stocks over- exploited or significantly depleted.</p> <p>The six targets cover:</p> <ul style="list-style-type: none"> <li>• Full implementation of EU nature legislation to protect biodiversity;</li> <li>• Better protection for ecosystems, and more use of green infrastructure;</li> <li>• More sustainable agriculture and forestry;</li> <li>• Better management of fish stocks</li> <li>• Tighter controls on invasive alien species;</li> <li>• A bigger EU contribution to averting global biodiversity loss.</li> </ul>	<p>The Plan reviews will need to consider how they can protect and enhance biodiversity in their plans in line with national guidance.</p> <p>The SA will need to consider how these can be best mitigated in the context other needs and objectives of the reviews.</p>

Table A1.2 National and London Region Plans and Programmes	Summary	Relevance to Local Plan Reviews / How they should respond, and Implications for SA
<p>National Planning Policy Framework 2012</p> <p><a href="https://www.gov.uk/government/uploads/system/uploads/attachment_data/file/6077/2116950.pdf">https://www.gov.uk/government/uploads/system/uploads/attachment_data/file/6077/2116950.pdf</a></p>	<p>The NPPF introduces a presumption in favour of sustainable development. The government's planning policy approach for delivering sustainable development re set out under the following key policy themes:</p> <ol style="list-style-type: none"> <li>1. Building a strong, competitive economy;</li> <li>2. Ensuring the vitality of town centres;</li> <li>3. Supporting a prosperous rural economy;</li> <li>4. Promoting sustainable transport;</li> <li>5. Supporting high quality communications infrastructure;</li> <li>6. Delivering a wide choice of high quality homes requiring good design;</li> <li>7. Promoting healthy communities;</li> <li>8. Protecting Green Belt land;</li> <li>9. Meeting the challenge of climate change, flooding and coastal change;</li> <li>10. Conserving and enhancing the natural environment;</li> <li>11. Conserving and enhancing the historic environment;</li> <li>12. Facilitating the sustainable use of minerals.</li> </ol>	<p>The NPPF is the key document guiding the high level objectives of the Local Plan Reviews. It will determine the parameters within which the reviews will be developed to an equal extent as the London Plan</p> <p>The SA will need to take account of how the objectives of the NPPF can be balanced with other national and international plans and programmes.</p>
<p>Planning and Compulsory Purchase Act 2004</p> <p><a href="http://www.legislation.gov.uk/ukpga/2004/5/contents">http://www.legislation.gov.uk/ukpga/2004/5/contents</a></p>	<p>Key act setting out updated planning processes from the Town and Country Planning Act 1990 in England, and requires the use of Sustainability Appraisals for plans and programmes in line with the E.U directive.</p>	<p>Local Plans follow the Local Development Framework structure established by the Act. The SA will not need to consider the implications of the legislation as it is enabled by them.</p>
<p>Localism Act 2011</p> <p><a href="http://www.legislation.gov.uk/ukpga/2011/20/contents/enacted">http://www.legislation.gov.uk/ukpga/2011/20/contents/enacted</a></p>	<p>The Localism act establishes Neighbourhood Planning, removed Regional Development Agencies and replaced them with a duty to cooperate on plan making.</p>	<p>The Local Plan Reviews will need to be consulted on under the Duty to Cooperate. The SA will need to be consulted on as it develops under the same duty.</p>

<p>Equalities Act 2010</p> <p><a href="http://www.legislation.gov.uk/ukpga/2010/15/contents">http://www.legislation.gov.uk/ukpga/2010/15/contents</a></p>	<p>The equalities act is not directly related to planning but focuses on establishing fairness in the development of policies including planning specifically against direct and indirect discrimination, harassment and victimisation in services and public functions, work, education, associations and transport.</p>	<p>The Local Plan Reviews need to consider their impact on minorities and other groups to ensure fairness.</p> <p>The SA does not need to consider this legislation.</p>
<p>National Planning Policy Guidance (NPPG) <i>Regularly Updated</i></p>	<p>National Planning Policy Guidance provides greater detail and explanation to the National Planning Policy Framework and acts as its companion document. The guidance also sets out processes, such as Local Plans and the Sustainability Appraisal</p>	<p>The Local Plan Reviews will need to consider all sections of the NPPG.</p> <p>The SA will need to consider and follow the guidance, especially the element pertaining to the development of SAs.</p>
<p>The UK Sustainable Development Strategy: Securing the Future (UK Govt. 2005)</p> <p><a href="https://www.gov.uk/government/publications/securing-the-future-delivering-uk-sustainable-development-strategy">https://www.gov.uk/government/publications/securing-the-future-delivering-uk-sustainable-development-strategy</a></p>	<p>Sets out a new purpose and principles for sustainable development and shared priorities agreed across the UK, including the Devolved Administrations.</p> <p>The strategy contains: Five principles with a more explicit focus on environmental limits; Four agreed priorities sustainable consumption and production, climate change, natural resource protection and sustainable communities; A new indicator set, which is more outcome focused, with commitments to look at new indicators such as on wellbeing.</p>	<p>The Plan Reviews will need to consider how they can achieve the relevant elements of the strategy in the context of new developments since the strategy was published.</p> <p>The SA will need to equally consider how these objectives function within the current regulatory framework.</p>
<p>The air quality strategy for England, Scotland, Wales and Northern Ireland (Volume 1, 2007; Volume 2, 2011)</p> <p><a href="https://www.gov.uk/government/publications/the-air-quality-strategy-for-england-scotland-wales-and-northern-ireland-volume-">https://www.gov.uk/government/publications/the-air-quality-strategy-for-england-scotland-wales-and-northern-ireland-volume-</a></p>	<p>The Air quality strategy sets out targets for air quality and works to improve air quality across the U.K</p>	<p>The Plan Reviews will need to consider how they can contribute to achieving these targets.</p> <p>The SA will need to consider these strategies in relation to environmental sustainability.</p>
<p>Planning for our electric future: a white paper for secure, affordable, and low carbon technology, July 2012</p> <p><a href="https://www.gov.uk/government/publications/planning-our-electric-future-a-white-paper-">https://www.gov.uk/government/publications/planning-our-electric-future-a-white-paper-</a></p>	<p>Strategy aims to increase the use of renewables as well as integrating them into infrastructure to better create competition, as well as preparing for a greater shift to electrification of systems.</p>	<p>The Plan Review will need to consider how they can contribute to Low Carbon developments.</p>

<a href="#">for-secure-affordable-and-low-carbon-energy</a>		<p>The SA will need to consider the strategy in relation to environmental but also economic sustainability.</p>
<p>Waste Management Plan for England July 2013</p> <p>National Planning Policy for Waste 2014</p> <p><a href="https://www.gov.uk/government/publications/national-planning-policy-for-waste">https://www.gov.uk/government/publications/national-planning-policy-for-waste</a></p> <p><a href="https://www.gov.uk/government/publications/waste-management-plan-for-england">https://www.gov.uk/government/publications/waste-management-plan-for-england</a></p>	<p>The National Planning policy for waste sets out a strategy aim for:</p> <p>Delivery of sustainable development and resource efficiency, including provision of modern infrastructure, local employment opportunities and wider climate change benefits;</p> <p>Providing a framework in which communities and businesses are engaged with and take more responsibility for their own waste;</p> <p>Helping to secure the re-use, recovery or disposal of waste without endangering human health and without harming the environment;</p> <p>Ensuring the design and layout of new residential and commercial development and other infrastructure (such as safe and reliable transport links);</p>	<p>The West London Waste plan forms part of the adopted planning framework in Hounslow and so will be key in implementing the aims of National policy at the regional level.</p>
<p><a href="#">Guidance on Tall Buildings (CABE and English Heritage 2007)</a></p> <p><a href="https://www.english-heritage.org.uk/professional/advice/advice-by-topic/setting-and-views/tall-buildings/">https://www.english-heritage.org.uk/professional/advice/advice-by-topic/setting-and-views/tall-buildings/</a></p>	<p>This strategy provides guidance on approval of tall buildings as well as general principles around the development of tall buildings.</p>	<p>The Local Plan Reviews will need to consider how this advice interoperates with their own policies in the context of statutory consultation. The SA needs to consider this plan and policy.</p>
<p><a href="#">The Changing face of the High Street: Decline and Revival (2013) English Heritage</a></p> <p><a href="http://www.english-heritage.org.uk/publications/changing-face-high-street-decline-revival/">http://www.english-heritage.org.uk/publications/changing-face-high-street-decline-revival/</a></p>	<p>Report considers the how high streets have adapted and/or failed to adapt and how they can be regenerated.</p>	<p>The Local Plan Reviews should consider the document and use it to guide the development of town centre policies.</p> <p>The SA need to consider this document in terms primarily of social and economic sustainability.</p>
<p><a href="#">Biodiversity 2020: A strategy for England's wildlife and ecosystem services</a></p>	<p>The Biodiversity strategies aim to integrate biodiversity into economic and social development in line with EU directives.</p>	<p>The Local Plan Reviews will need to consider how the aims of the strategies can be fulfilled within the scope of the plan. As can be</p>

<p><a href="#">UK Post 2010 Biodiversity Framework</a></p> <p><a href="https://www.gov.uk/government/publications/biodiversity-2020-a-strategy-for-england-s-wildlife-and-ecosystem-services">https://www.gov.uk/government/publications/biodiversity-2020-a-strategy-for-england-s-wildlife-and-ecosystem-services</a></p> <p><a href="https://www.gov.uk/government/publications/biodiversity-2020-a-strategy-for-england-s-wildlife-and-ecosystem-services">https://www.gov.uk/government/publications/biodiversity-2020-a-strategy-for-england-s-wildlife-and-ecosystem-services</a></p>	<p>Biodiversity 2020 specifically aims for:</p> <p>An increase in priority habitats by at least 200,000ha The restoration of 15% of degraded ecosystems – as a contribution to climate change mitigation and adaptation the creation of goals for improving SSSIs and priority habitats.</p>	<p>expected, these primarily relate to protect and enhancing biodiversity with new development.</p> <p>The SA needs to consider this document.</p>
<p>European Landscape Convention: guidelines for managing landscapes (2010)</p> <p><a href="http://publications.naturalengland.org.uk/publication/6361194094919680?category=31019">http://publications.naturalengland.org.uk/publication/6361194094919680?category=31019</a></p>	<p>These guidelines set out the management of landscapes in line with E.U directives in the U.K context. This primarily related to the designation and protection of landscapes and the creation of plans for their management.</p>	<p>The Local Plan reviews need to take account of existing landscapes and seek to protect them where required.</p> <p>The SA will need to consider this document in terms of environmental and social sustainability.</p>
<p><a href="#">Fair Society, Healthy Lives, The Marmot Review, 2010</a></p> <p><a href="http://www.instituteofhealthequity.org/projects/fair-society-healthy-lives-the-marmot-review">http://www.instituteofhealthequity.org/projects/fair-society-healthy-lives-the-marmot-review</a></p>	<p>The Marmot review focuses on social inequality and sets out a series of key goals for reducing it:</p> <ul style="list-style-type: none"> <li>• A focus on early years of children</li> <li>• A focus on healthy standards of living and healthy places</li> <li>• A focus on improving employment opportunities and job quality.</li> </ul>	<p>The Local Plan reviews will need to account for how they will work towards improving health outcomes and how they can encourage healthier lives.</p> <p>The SA will need to consider this document primarily in terms of social and economic sustainability.</p>
<p>Energy Act (2011)</p> <p><a href="http://www.legislation.gov.uk/ukpga/2011/16/contents/enacted">http://www.legislation.gov.uk/ukpga/2011/16/contents/enacted</a></p>	<p>The Energy Act 2011 sets out decarbonisation aims for the U.K economy by 2030 as well as encouraging sustainable energy sources.</p>	<p>The Local Plan reviews need to consider how developments can provide long term carbon reductions.</p> <p>The SA will need to consider this document in terms of economic and environmental sustainability.</p>
<p>Climate Change Act (2008)</p> <p><a href="http://www.legislation.gov.uk/ukpga/2008/27/contents">http://www.legislation.gov.uk/ukpga/2008/27/contents</a></p>	<p>The Climate Change act implements the Kyoto targets of 80% reductions in carbon emissions by 2050 as well as encouraging new technologies to meet these targets.</p>	<p>The Local Plan must consider how they can contribute to the achievement of the Kyoto targets.</p> <p>The SA will need to consider this document against sustainability in the long term.</p>

<p>London Plan 2011 Revised Early Minor Alterations (REMA) 2013 Further Alterations to the London Plan (2015)</p>	<p>The London Plan is the key spatial development document for London setting out how the capital will grow sustainably up to 2031. It includes policies on the following areas:</p> <ul style="list-style-type: none"> <li>• Housing binds London Boroughs to delivering a minimum housing target (for Hounslow, 822 pa) with a balance which meets objectively assessed needs, including aiming for 40% of units in new developments to be affordable;</li> <li>• Design and residential minimum standards for new housing; Biodiversity protection and Open space amenity including green space standards; (London Green Grid and Blue Ribbon Networks)</li> <li>• Transport, including managing strategic links as well as provision of public transport and minimum car parking and cycle standards in new developments;</li> <li>• A town centre hierarchy and focus on new development occurring in and around town centres;</li> <li>• A focus on economic development and the protection of designated employment sites, while releasing others in a controlled way; opportunity areas;</li> <li>• Air and Noise quality (Expanded through two supplementary documents) as well as ensuring health outcomes;</li> <li>• Managing the interworking of Boroughs on these objectives towards a coherent development plan for London.</li> </ul>	<p>Local Plan Reviews will need to be in General Conformity with all the Policies of the London Plan.</p> <p>The SA must take account of how these policies in all areas impact on sustainability.</p>
<p>Homes For London The London Housing Strategy (2014)</p> <p><a href="http://www.london.gov.uk/sites/default/files/Draft%20London%20Housing%20Strategy%20April%202014_0.pdf">http://www.london.gov.uk/sites/default/files/Draft%20London%20Housing%20Strategy%20April%202014_0.pdf</a></p>	<p>Homes for London aims to radically increase housebuilding levels and quality in London. It has five key aims:</p> <ul style="list-style-type: none"> <li>• Increasing housing supply to levels not seen since the 1930s;</li> <li>• Better supporting working Londoners and helping more of them into home ownership;</li> </ul>	<p>The Local Plan reviews need to consider how the strategy augments and builds upon the London Plan policies and implicate these within proposed development.</p> <p>The SA will need to consider how this strategy impacts on social economic and environmental sustainability.</p>

	<ul style="list-style-type: none"> <li>• improving the private rented sector;</li> <li>• pushing for a new, long-term financial settlement for London Government to drive housing delivery and;</li> <li>• Promoting land for development and accelerating the pace of housing delivery through Housing Zones and the London Housing Bank.</li> </ul>	
<p><a href="http://www.london.gov.uk/priorities/business-economy/publications/economic-development-strategy">The Mayor's Economic Development Strategy for London (May 2010)</a></p> <p><a href="http://www.london.gov.uk/priorities/business-economy/publications/economic-development-strategy">http://www.london.gov.uk/priorities/business-economy/publications/economic-development-strategy</a></p>	<p>Sets out the London-wide strategy for the future of London's economy ensuring the city remains a key global economic location.</p>	<p>The Local Plan Reviews will need to consider how they will achieve the economic development envisioned by the strategy. The SA will need to consider this document primarily in terms of social and economic sustainability.</p>
<p><a href="https://www.london.gov.uk/priorities/transport/publications/mayors-transport-strategy">The Mayor's Transport Strategy GLA 2010</a></p> <p><a href="https://www.london.gov.uk/priorities/transport/publications/mayors-transport-strategy">https://www.london.gov.uk/priorities/transport/publications/mayors-transport-strategy</a></p>	<p>The Mayor's transport strategy sets out six aims for the transport in London. These focus around increasing the range and accessibility of transport to various areas of London, and reducing the climate impact of these transport measures. It sees this is essential to economic growth and achieving carbon reduction targets.</p>	<p>The Local Plan Reviews will need to focus on how they can work to improve transport accessibility within the borough and increase the range available.</p> <p>The SA will need to consider this document primarily in terms of its impact on economic, but also social and environmental sustainability of future transport.</p>
<p><a href="http://www.london.gov.uk/priorities/planning/publications/draft-town-centres-supplementary-planning-guidance">Town Centres SPG 2014</a></p> <p><a href="http://www.london.gov.uk/priorities/planning/publications/draft-town-centres-supplementary-planning-guidance">http://www.london.gov.uk/priorities/planning/publications/draft-town-centres-supplementary-planning-guidance</a></p>	<p>The Town Centres SPG to the London Plan sets out in greater detail the London Plan's focus on improving centres, this includes design quality, accessibility and connections and how to deliver high streets which include more housing.</p>	<p>The Local Plan Reviews will need to look at how development can be focused into town centres as well as how these centres can be improved in terms of public transport and walking accessibility.</p> <p>The SA will need to take the impact of this into account, especially in terms of economic sustainability.</p>
<p><a href="http://www.london.gov.uk/priorities/environment/clearing-londons-air">Clearing the air: The Mayor's Air Quality Strategy (December 2010)</a></p> <p><a href="http://www.london.gov.uk/priorities/environment/clearing-londons-air">http://www.london.gov.uk/priorities/environment/clearing-londons-air</a></p>	<p>Clearing the air establishes a key set of aims designed to meet E.U air quality standards:  Make London a more pleasant place to live and work in;  Reduce the burden on health services in the capital</p>	<p>The Local Plan Reviews will need to focus on how they can work to reduce pollution within areas of deficiency while also providing for the economic needs of the borough.</p>

	Enhance London's reputation as a green city making it more attractive to tourists and businesses; Make London cleaner whilst safeguarding its biodiversity.	The SA will need to take the impact of this into account, especially in terms of environmental sustainability.
<a href="#">Connecting with London's Nature: The Mayor's Biodiversity Strategy (2002)</a>  <a href="http://legacy.london.gov.uk/mayor/strategies/biodiversity/biodiversity_strategy.jsp">http://legacy.london.gov.uk/mayor/strategies/biodiversity/biodiversity_strategy.jsp</a>	Connecting with London's nature focuses on how to protect biodiversity while also maximizing its access. It highlights the economic advantages to wellbeing and sustainability this could bring.	The Local Plan Reviews will need to consider how existing biodiversity can be made more accessible to the population of the Borough.  The SA will need to consider this document primarily in terms of environmental and economic sustainability.
<a href="#">Cultural Metropolis: The Mayor's cultural strategy – 2012 and beyond (2010)</a>  <a href="https://www.london.gov.uk/priorities/arts-culture/publications/mayors-cultural-strategy">https://www.london.gov.uk/priorities/arts-culture/publications/mayors-cultural-strategy</a>	Cultural Metropolis provides a singular strategy for the development and preservation of London as a cultural capital. It sets out strategies for licensing as well as how venues should be supported, and gives guidance on spatial development for entertainment and leisure.	The Local Plan Reviews will need to consider the implications of the strategy for cultural development and preservation in the borough.  The SA will need to consider the impact of this document, primarily in terms of social sustainability.
<a href="#">Accessible London: Achieving an inclusive environment, 2014</a>  <a href="https://www.london.gov.uk/priorities/planning/publications/accessible-london-achieving-an-inclusive-environment">https://www.london.gov.uk/priorities/planning/publications/accessible-london-achieving-an-inclusive-environment</a>	Accessible London focuses on improving the city for disabled and older residents and visitors with specific design guidance on developments as well as public spaces.	The Local Plan Reviews will need to consider the implications of this strategy on new developments and public spaces  The SA will need to consider the impact of this document primarily in terms of environmental and economic sustainability.
<a href="#">The Mayor's Housing SPG 2012</a>  <a href="http://www.london.gov.uk/priorities/planning/publications/housing-supplementary-planning-guidance">http://www.london.gov.uk/priorities/planning/publications/housing-supplementary-planning-guidance</a>	The Mayor's Housing SPG focuses on the delivery of new homes in London to deal with a rising population. The SPG focuses on the delivery of high quality housing rather than pure quantity looking to ensure "housing must also enhance the environment, improve choice and affordability and provide better quality homes."	The Local Plan Reviews must place a strong emphasis on the development of good quality homes and support this with a high quality environment.  The SA will need to consider the impact of this document on the full range of sustainability outcomes as housing is a significant pressure in the reviews.
<a href="#">The Mayor's Sustainable Design and Construction SPG, 2014</a>	The Sustainable Design and Construction SPG puts in place a range of guidance on the development of more	The Local Plan reviews must continue and extend the policies in the Local Plan for sustainable design and construction.

<p><a href="http://www.london.gov.uk/priorities/planning/consultations/draft-sustainable-design-and-construction">http://www.london.gov.uk/priorities/planning/consultations/draft-sustainable-design-and-construction</a></p>	<p>sustainable buildings, including decentralized energy networks, carbon offsetting, decarbonisation.</p>	<p>The SA will need to take account of these policies.</p>
<p><a href="https://www.london.gov.uk/priorities/planning/publications/the-control-of-dust-and-emissions-during-construction-and-demolition,2014">The control of dust and emissions during construction and demolition,2014</a>  <a href="https://www.london.gov.uk/priorities/planning/publications/the-control-of-dust-and-emissions-during-construction-and-demolition,2014">https://www.london.gov.uk/priorities/planning/publications/the-control-of-dust-and-emissions-during-construction-and-demolition,2014</a></p>	<p>This SPG seeks to secure reductions in the amount of pollution generated by construction, especially diesel particulate matter.</p>	<p>The Local Plan Reviews will need to consider the impact of the SPG on development plans.</p> <p>The SA will need to take account of these policies.</p>
<p><a href="https://www.london.gov.uk/priorities/planning/consultations/draft-social-infrastructure-supplementary-planning-guidance">Draft Social Infrastructure SPG, 2014</a>  <a href="https://www.london.gov.uk/priorities/planning/consultations/draft-social-infrastructure-supplementary-planning-guidance">https://www.london.gov.uk/priorities/planning/consultations/draft-social-infrastructure-supplementary-planning-guidance</a></p>	<p>The Draft Social Infrastructure SPG focuses on planning for infrastructure such as health, open space and faith facilities within planning documents. It provides advice on planning for lifetime neighborhoods as well as detail for organizational planning systems.</p>	<p>The Local Plan Reviews will need to ensure they take account of this guidance in extending the chapter in the Local Plan on community infrastructure.</p> <p>The SA will need to take account of these policies especially in regards to social and environmental sustainability.</p>
<p><a href="https://www.london.gov.uk/priorities/planning/publications/shaping-neighbourhoods-character-and-context,2014">Shaping neighbourhoods: Character and context, 2014</a>  <a href="https://www.london.gov.uk/priorities/planning/publications/shaping-neighbourhoods-character-and-context">https://www.london.gov.uk/priorities/planning/publications/shaping-neighbourhoods-character-and-context</a></p>	<p>Shaping Neighborhoods sets out design guidance for smaller areas, focusing on how developments can help to improve a sense of place. It also looks at how infrastructure can be improved for local people.</p>	<p>The Local Plan reviews will need to consider the impact of the SPG on both new development plans as well as regeneration of existing neighbourhoods.</p> <p>The SA will need to take account of these policies.</p>
<p><a href="http://www.london.gov.uk/priorities/environment/consultations/climate-change-mitigation-and-energy-strategy">The Mayor's Climate Change Mitigation and Energy Strategy 2011</a>  <a href="http://www.london.gov.uk/priorities/environment/consultations/climate-change-mitigation-and-energy-strategy">http://www.london.gov.uk/priorities/environment/consultations/climate-change-mitigation-and-energy-strategy</a></p>	<p>The Mayors Climate Change Strategy focuses on preparation for the impact of climate change on London, specifically on flooding and often extreme weather events. It also works with the London Plan and national guidance to look at reducing GHG emissions in London.</p>	<p>The Local Plan reviews will need to focus on the delivery of low carbon development as well as mitigation for the effects of flooding and surface water management.</p> <p>The SA will need to take account of these policies.</p>

Table A1.2 Local Plans and Programmes	Summary	Relevance to Local Plan Reviews / How they should respond, and Implications for SA
LBH Local Plan 2015-30 <a href="https://hounslow.box.com/shared/static/i1jpu00afbftgbd1fdubkl6z0ivgdugo.pdf">https://hounslow.box.com/shared/static/i1jpu00afbftgbd1fdubkl6z0ivgdugo.pdf</a>	The Local Plan sets out development in the borough to 2030, and was adopted in September 2015. It forms the basis for this Plan Review and will feature heavily in the plan reviews as the baseline for changes.	By default the Local Plan is the key document in the Reviews.  The SA must reflect the development of objectives and circumstances in the time since the previous sustainability appraisal was completed, as well as its synergies.
Golden Mile Site Capacity Study (2014) <a href="http://democraticservices.hounslow.gov.uk/documents/s123450/Appendix%203%20-%20Sub%20appendix%205.pdf">http://democraticservices.hounslow.gov.uk/documents/s123450/Appendix%203%20-%20Sub%20appendix%205.pdf</a>	The Golden Mile Site Capacity Study considers the potential for the regeneration of the 'Golden Mile' area of the A4 between Chiswick and Osterley. It proposes potential Masterplan ideas as well as residential and employment capacities along the route and contributes towards the development of an overall Masterplan.	The Local Plan review will need to consider the Golden Mile document as a key element in setting out its aims.  The SA will need to consider the implications of the study and how its aims can be achieved sustainably.
Feltham Vision and Concept Masterplan (2015) <a href="http://www.hounslow.gov.uk/feltham_vision_masterplan_may15.pdf">http://www.hounslow.gov.uk/feltham_vision_masterplan_may15.pdf</a>	The Feltham Vision and Concept Masterplan presents ideas for the comprehensive regeneration of Feltham Town Centre in order to improve its accessibility, amenity and function, while providing new housing and employment opportunities. It supports the sustainable development of social, economic as well as environmental resources in the Feltham Area.	The Local Plan Review will need to consider the Feltham Vision and Concept Masterplan as it will form part of the evidence base for the West of the Borough Plan (WOBP).  The SA will need to consider the implications of this report and how its aims can be achieved sustainably.
Heathrow New Garden City: A Vision for the West of the Borough (2015) <a href="https://hounslow.box.com/s/dcqb5fc727iwkb0o3khxy5e1daxbhumi">https://hounslow.box.com/s/dcqb5fc727iwkb0o3khxy5e1daxbhumi</a>	The Heathrow Garden City visioning document sets out ideas for development in the West of the Borough designed to sustainably develop an ecologically balanced development in the West of Hounslow, which would secure social and environmental development as well as new infrastructure.	The Local Plan Review should give consideration to this document as it will guide sustainable development objectives for ecology in the West of the Borough. The SA will need to consider the implications of this report and how its aims can be achieved sustainably.
Borough Wide Context And Character Study (2014) <a href="http://www.hounslow.gov.uk/context_and_character_study">http://www.hounslow.gov.uk/context_and_character_study</a>	The Borough Context and Character Study sets out an evidence base for the key design features of areas of the borough. It acts as a baseline for the implementation of the Character and Context chapter of the Local Plan as well as the London Housing SPG and 'Shaping Neighbourhoods' SPG.	The Local Plan Review should give consideration to this study in support of setting sustainable development objectives that maintain and enhance the character of Hounslow.

<p>Future Borough Hounslow Together's vision, strategy and action plan (2011)</p> <p><a href="http://www.hounslow.gov.uk/vision_2030.pdf">http://www.hounslow.gov.uk/vision_2030.pdf</a></p>	<p>Future Borough sets out the borough's vision for Hounslow up to 2030. The Strategy makes up the key component of the objectives of the Local Plan and the objectives laid out in the sustainability appraisal.</p>	<p>The Local Plan reviews must consider how they can improve on the Local Plan to better meet the needs of the strategy and action plan.</p> <p>The SA must consider the strategy as the key component of the objectives to be assessed for their sustainability.</p>
<p>Voluntary and Community Strategy 2015</p> <p><a href="http://www.hounslow.gov.uk/voluntary_community_strategy_2011.pdf">http://www.hounslow.gov.uk/voluntary_community_strategy_2011.pdf</a></p>	<p>Hounslow Voluntary and Community Strategy 2011-2015 outlines the boroughs aims for greater community participation in the borough; specifically it looks at creating 'active citizens' who take ownership of their local areas, encouraging more volunteers, and the integration of public and private services with voluntary (third sector) organisations.</p>	<p>The Local Plan reviews will need to consider how they both involve the local community and community organisations in plan making, as well as how to support community infrastructure used by voluntary groups.</p> <p>The SA needs to consider the impact of this strategy on Social and Economic sustainability.</p>
<p>Children and Young People's Plan 2012-15</p> <p><a href="http://www.hounslow.gov.uk/children_young_people_plan.pdf">http://www.hounslow.gov.uk/children_young_people_plan.pdf</a></p>	<p>Hounslow Children and Young people's plan 2012-15 outlines the borough's strategy for improving the lives and life chances of young people in the borough. Specifically, this involves improving children's health, including mental health, vulnerable persons, and physical health through leisure activity maximising educational achievement, joint working between organisations involved with young children.</p>	<p>The Local Plan Reviews will need to consider how they can create provisions for young people within planning policies, especially with regards to the provision of community infrastructure.</p> <p>The SA needs to consider the impact of this strategy on Social and in the longer term, economic sustainability.</p>
<p>Community Safety Strategy 2014-17</p> <p><a href="http://www.hounslow.gov.uk/community_safety_strategy_2014-2017.pdf">http://www.hounslow.gov.uk/community_safety_strategy_2014-2017.pdf</a></p>	<p>Hounslow Community Safety Strategy adopts a broad range of measures aimed at reducing crime in the borough. Specifically, it aims to reduce crime and the fear of crime in all areas of the borough and among vulnerable groups, as well as focusing on improvements to the criminal justice system.</p>	<p>The Local Plan reviews will need to consider how they can work to reduce crime the fear of crime through the built environment, for example through Secured by Design.</p> <p>The SA will need to consider this strategy and its impacts on social sustainability.</p>
<p>Corporate Property Strategy 2014-19</p> <p><a href="http://democraticservices.hounslow.gov.uk/(S(4k323145mbtlkkuihe1zfy45))/documents/s85229/Corporate%20Property%20Strategy%202013%20Final.pdf">http://democraticservices.hounslow.gov.uk/(S(4k323145mbtlkkuihe1zfy45))/documents/s85229/Corporate%20Property%20Strategy%202013%20Final.pdf</a></p>	<p>Hounslow Corporate Property Strategy aims to manage and make best use of corporate assets. This includes maximising benefits to regeneration, minimising environmental impacts and property helps to bring in revenue to support council activities.</p>	<p>The Local Plan reviews will need to consider how corporate property can best be maximised by planning policy and how the strategy effects development plans.</p> <p>The SA will need to consider the potential sustainability impacts of the strategy for the Local Plan.</p>

<p>Draft Leisure and Culture Strategy 2016-20</p> <p><a href="http://www.hounslow.gov.uk/draft_hounslow_leisure_and_culture_strategy_2016-2020.pdf">http://www.hounslow.gov.uk/draft_hounslow_leisure_and_culture_strategy_2016-2020.pdf</a></p>	<p>The Leisure and cultural strategy sets out the boroughs aims for Parks and Open spaces, historic parks and gardens, libraries and sports facilities. It specifically looks at the modernisation and improvement of these facilities to facilitate greater community benefits.</p>	<p>The Local Plan reviews will need to consider how they these plans interoperate with the provision of new open space and community facilities as well as upgrading of older sites.</p> <p>The SA will need to consider the potential sustainability impacts of the strategy for the Local Plan</p>
<p>Hounslow Biodiversity Action Plan 2011-16</p> <p><a href="http://www.hounslow.gov.uk/biodiversity_action_plan_oct13.pdf">http://www.hounslow.gov.uk/biodiversity_action_plan_oct13.pdf</a></p>	<p>The Biodiversity action plan seeks to: provide a strategic overview of biodiversity in the borough, and to prioritise protection and enhancement of habitats, as well as raising community awareness. It sets out how the Borough will maintain its biodiversity.</p>	<p>The Local Plan reviews will need to consider how biodiversity can be protected as well as improved through the plans.</p> <p>The SA will need to consider the potential sustainability impacts of the strategy for the Local Plan especially with regards to environmental sustainability.</p>
<p>Joint Strategic Needs Assessment 2014</p> <p><a href="http://www.hounslow.gov.uk/jsna_2014_this_is_hounslow.pdf">http://www.hounslow.gov.uk/jsna_2014_this_is_hounslow.pdf</a></p>	<p>The Joint Strategic Needs assessment is designed to bring together a single strategy for health within the borough. It principally aims to reduce the incidence of obesity, increasing physical activity, reducing smoking, reducing substance misuse and improving sexual health through a range of measures.</p>	<p>The Local Plan reviews will need to consider how best the tackle the health needs set out by the JSNA through the provision of community infrastructure.</p> <p>The SA will need to consider the potential sustainability impacts of the JSNA on social, economic and environmental sustainability.</p>
<p>Strategic Flood Risk Assessment (SFRA) 2015 (Stage 1)</p> <p><a href="https://hounslow.box.com/SFRA2015">https://hounslow.box.com/SFRA2015</a></p>	<p>The SFRA 2015 updates the SFRA 2007 and identifies key areas at risk of flooding in the borough. These are primarily along the river Thames, especially in Isleworth, and the River Crane Corridor.</p>	<p>The Local Plan Reviews will need to ensure new developments are not at risk of flooding through mitigation or the safeguarding of floodplains.</p> <p>The SA will need to consider the potential sustainability impacts of flooding and sustainable development.</p>
<p>The Way to a Healthier Hounslow 2009-2014</p> <p><a href="http://democraticservices.hounslow.gov.uk/mgConvert2PDF.aspx?ID=38742">http://democraticservices.hounslow.gov.uk/mgConvert2PDF.aspx?ID=38742</a></p>	<p>The Way to a Healthier Hounslow is a strategy aimed at reducing overweightness and obesity in the borough, through both education and encouraging greater physical activity.</p>	<p>The Local Plan Reviews will need to ensure that the plans place emphasis on accessibility of physical activity and related community infrastructure.</p> <p>The SA will need to consider the sustainability impacts of the strategy with particular reference to social sustainability.</p>
<p>Building Homes; Building Communities: Hounslow Housing Strategy 2014-18</p> <p><a href="http://www.hounslow.gov.uk/housing_strategy_2014-2018.pdf">http://www.hounslow.gov.uk/housing_strategy_2014-2018.pdf</a></p>	<p>Building Homes, building communities sets out the boroughs strategy for housing in the borough, specifically affordable and specialist housing while also supporting communities and preventing homelessness.</p>	<p>The Local Plan reviews will need to consider how the strategy can be implemented and how spatial planning can help to complement the provision of this housing.</p> <p>The SA will need to consider the sustainability impacts of the strategy in terms of social and economic sustainability.</p>

<p>The Hounslow Local Implementation Plan for Transport (2011 -2031)</p> <p><a href="http://www.hounslow.gov.uk/lip_2011_1.pdf">http://www.hounslow.gov.uk/lip_2011_1.pdf</a></p>	<p>The Hounslow Local Implementation Plan focuses on the delivery of transport benefits over the next 20 years with a focus on improving air quality, safety, increasing physical activity and reducing congestion. It outlines key projects to achieve this.</p>	<p>The Local Plan Reviews will need to consider how they interoperate with the strategy to achieve its outcomes and aims for transport in the borough.</p> <p>The SA will need to consider the sustainability impacts of the Plan especially in terms of its economic and environmental impact.</p>
<p>Skills and Employment Strategy 2014 – 2016</p> <p><a href="http://democraticservices.hounslow.gov.uk/documents/s95000/Executive%20summary%20-%20Hounslow%20Skills%20Strategy%202014-2016.pdf">http://democraticservices.hounslow.gov.uk/documents/s95000/Executive%20summary%20-%20Hounslow%20Skills%20Strategy%202014-2016.pdf</a></p>	<p>Hounslow Skills and Employment strategy focuses on delivering economic benefits to the borough’s population. It aims to do this by supporting local employment growth, improving young people’s achievement and access to employment and helping the unemployed return to work.</p>	<p>The Local Plan Reviews will need to consider how they can support the outcomes of the strategy by providing community infrastructure as well as new employment opportunities for the population of the borough.</p> <p>The SA will need to consider the sustainability impacts of the strategy primarily in terms of economic and social sustainability.</p>

**Appendix 2a: Table 2a Social Baseline information (Stage A2) and sustainability issues (Stage A3)**

<b>Table 2a: Social Baseline information (Stage A2) and sustainability issues (Stage A3)</b>				
Topic	Quantified Data	Comparators/Targets	Trends/Projections	Issues Identified
Size/Number of Population	Hounslow population for 2015: 269,247 [GLA 2014 Round Trend Based Short Term]	Projected population for 2020: 9,398,367 [GLA 2014 Round Trend Based short Term] UK Population estimate for 2014: 64,596,800 [ONS 2014 Based Principal Projection]	Population increase: Hounslow Projection for 2020: 284,228 [GLA 2014 Round Trend Based Short Term] Greater London projected population for 2015: 8, 608,375 [GLA 2014 Round Trend Based Short Term] UK Projection to 2025: 69,444,000 [ONS 2014 Based Principal Projection]	Growing population

Migration	Net Migration in (International and Internal) = 71 persons Internal Migration = -3768 International Migration Net = 3607 Largest Age group internally = 30-34 Years Largest Age group internationally = 25-29 [ONS Mid-Year 2014 estimates]	Overall net migration into UK for same period = 249,458 Largest Age group in = 20-24 Largest Group out = 20-24  Current government target seeks to reduce immigration. However inflow was highest since mid-2011 overall. [ONS Mid-Year 2014 estimates]	Net migration into Hounslow appears low however the majority of inflow are external and outflow internal, so the population is becoming more international, as well as younger.  Migration is projected to increase in the short term.	Increasing population  Increased international migrant population
Number of persons per HA	49(48.7) Person per HA [GLA 2014 Round Trend Based Short Term]	London: 5 (54.7) Persons per Ha UK [GLA 2014 Round Trend Based Short Term]	Hounslow 2025 density 51 (51.4) Persons per Ha London 2025 density: 60 (59.7) Persons per Ha [GLA 2014 Round Trend Based Short Term]	Balance between amenity and housing; quality of life.
Standardised Mortality Rate Number of deaths / Life Expectancy	Number of Deaths in 2014 = 1372 SMR = 91 Death Registrations Summary Statistics, England and Wales, 2014] Life Expectancy at birth = 81.7 years. Male = 80 Female = 83.9 [ONS 2015 Life expectancy at birth (years) with 95% confidence intervals, by sex and region in England, 1991–1993 to 2012–2014]	Number of deaths in London 2014: 47,583 SMR = 91 [Death Registrations Summary Statistics, England and Wales, 2014] Life Expectancy = 82.3 [ONS 2015 Life expectancy at birth (years) with 95% confidence intervals, by sex and region in England, 1991–1993 to 2012–2014]	Life Expectancy in the borough has improved from 78.4 in 2004 to 81.7. This indicates positive health outcomes for the borough. However it also indicates a gradually ageing population.	Ageing population
Birth rate	Live births: 4,496 in 2015 [GLA 2014 Round Trend Based Short Term]	Live births in 2014 London: 129784 England: 695,233 [Birth Summary Tables, England and Wales, 2014]	No projected increase in birth rate across the U.K to 2027. Current Short Term Models predict birth-rate rising by around 10% and holding this level up to 2030.	Increasing number of babies and small children in the coming years. Issues over provision of schooling and nurseries.

<p>% and number of persons within specific age groups</p>	<p>Hounslow Median Age: 34.5  Males: 136,999  Women: 128,569  0-19: 67655 (25.2%) --- 20-44: 114747 (42.6%)  45-64: 57018 (21.2) --- 65+: 29827 (11%)  [GLA 2014 Projections, Long Term Trend Based]</p>	<p>London Median Age: 34  Males: 4,234,019  Females: 4,304,670  Ages (both sexes)  0-19: 2,103,544 (25%)  20-44: 3,662,493 (43%)  45-64: 1,861,262 (22%)  65+: 981,076 (11%)  [GLA 2014 Projections, Long Term Trend Based]</p>	<p>Projections to 2025 for Hounslow:</p> <ul style="list-style-type: none"> <li>- 0-19: 75,498 (+12%)</li> <li>- 20-44: 119,914(+5%)</li> <li>- 45-64: 65,084(+14%)</li> <li>- 65+: 36,393(+22%)</li> </ul> <p>This shows an increasingly ageing population as well as some growth within young people. However it means a relative drop in working age.  [GLA 2014 Projections, Long Term Trend Based]</p>	<p>Increasingly ageing population, drop in working age and increase in young people.</p>
<p>Premature Deaths</p>	<p>Premature Mortality Rate per 100,000 Population, Hounslow: 185  The biggest causes of premature deaths attributed to: Cancers (malignant neoplasms) 14%  Coronary heart disease: 4%  [London's Poverty Profile 2011]</p>	<p>Premature Mortality Rate, London Wide: 170  London's Poverty Profile 2011]  Hounslow aims to reduce these as much as possible.</p>	<p>Hounslow premature deaths have fallen by 20% since 2002 in both males and females. However there have been rises in some cancers. [Hounslow JSNA 2014]</p>	<p>Higher than average levels of premature deaths</p>
<p>% population with a long-term limiting illness</p>	<p>Hounslow:  Day to day activities Limited a lot:  16,403 (6.4% of total pop)  Limited a little:  18,600 (7.3% of total pop)  Total of: 13.7%  [ONS 2011]</p>	<p>London:  Total population with Long Term Limiting Illness = 14.1%</p>	<p>Hounslow has seen a fall in Long Term Illness from 14.9% in 2001 to 13.7%</p>	<p>Support for those with disabilities.</p>

Respiratory Diseases	Hounslow: Chronic obstructive pulmonary disease (COPD) rates are 1%. Deaths from respiratory diseases overall make up 10% of all deaths. Mortality rates from Respiratory disease are statistically higher in the West Area, and lower in Chiswick (East). [Hounslow JSNA 2014]	National COPD rates are approximately 70% higher (1.7%).	Overall rates have reduced over time, however they are still higher in West of the Borough.	Health inequalities in the West of the Borough
Obesity Rates	Hounslow: 20.2% of adults are obese 62.2% of Adults are overweight [APHO Health Profiles 2014]  19.2% of Children are Obese [2014 National Child Measurement Programme]	London: 20.2% England: 24% [Sport England 2014]	Increasing trend across U.K and Hounslow follows this trend.	High and increasing levels of Obesity
Number of ethnic minority persons and % of total population	Minority-Majority Population (51% BAME) 38.4% Asian or Asian British of total ethnic population 20.6% Indian Ethnicity [GLA Ethnic Group Projections SHLAA base 2014 round]	London is still majority white (58%) Largest BAME group = Indian (7.2%) [GLA Ethnic Group Projections SHLAA base 2014 round] UK: 92.2% White Ethnicity (7.8% BAME) – Largest BAME group: Pakistani (1.3%) [ONS Census 2011]	Hounslow BAME percentage has increased by 2% since 2011; projected to increase by 4.% to 56.1% by 2030  London BAME percentage has increased by 1.18% since 2011; projected to increase by 3.4% to 45%.3 by 2030.	Large and increasing minority ethnic population at greater rate than London Average.  Population - significant proportion of Indian Ethnic group in population.

<p>% of people considering themselves religiously affiliated</p>	<ul style="list-style-type: none"> <li>42% Christian; 14% Muslim; 9% Sikh; 10.3% Hindu; 15.9% No Religion</li> </ul> <p>[ONS 2011 Census]</p>	<p>London:</p> <ul style="list-style-type: none"> <li>48.4% Christian; 12.4% Muslim; 1.5% Hindu; 5% Sikh; 20.7% No Religion</li> </ul> <p>England:</p> <ul style="list-style-type: none"> <li>59.4% Christian; 5% Muslim; 1.5% Hindu; 0.2% Sikh; 24.7% No Religion</li> </ul> <p>[ONS 2011 Census]</p>	<p>Fall in number registered as Christian 2001-11 of 20% (-10.1%). Rise of 25% in those considering themselves Muslim. Overall this reflects a less aggressive trend than the U.K average (Fall of 25% in Christianity, rise of 50% in Islam).</p>	<p>Large proportions of the community are religiously affiliated. Rise in religious minorities.</p>
<p>Life expectancy at birth</p>	<p>Hounslow. 2015 Females 83.6 Males 80 [GLA Borough Population Projections Long Term 2014]</p>	<p>At birth in London: Female: 84.5 Male: 81 [GLA Borough Population Projections Long Term 2014]</p> <p>England: Female: 82.8 Male: 79.1 [ONS National Life Tables 2014]</p>	<p>Improvement in life Expectancy in borough since 2008: 1.1 Years for women, 10 months for men.</p> <p>Life expectancies at 2025 projected to be 87.4 for Women (+4.8 Years) and 84.2 for men (+5 years).</p>	<p>Increase in both male and female life; ageing populations.</p>
<p>Claimant counts</p>	<p>Total of 2658 (1.5%) [Nomis ILO 2015]</p>	<p>2015 104,821 people in London (1.8%) 522,351 people in England (1.5%) [Nomis ILO 2015]</p>	<p>Numbers have fallen over last 5 years. Hounslow has the same percentage as England average and less than London average.</p>	<p>Employment sustainability and growth.</p>

Number of crimes	2014: Total Crimes: 21,708 Homicide: 1 Violence Against Person: 7131 Burglary: 1786 (1196 Residential) Motor Vehicle Crime: 2497 Racist and Religious Crime: 480 [Met Police Statistics 2015]	Total Crimes 2014 London: 733,382 Homicide: 118 [Met Police Statistics 2015] UK (Up to June 2014): Total Crime: 7.1 Million [ONS 2014 Crime in England and Wales to June 2014]	Crime rates in Hounslow increased by 7% (Total Crimes). Crime rate in London up 5% in same period. UK Crime rate down 16% from previous period (2013)	React to increased levels of crime and focus on secured by design.
Number of homeless Persons	In 2014/15, there were 444 homeless applications and acceptances in Hounslow. This equates to a rate of 4.4 per 100 households. [DCLG Live tables on Homelessness (784) 14-15 Year]	London: Homelessness rate of 5.1/1000 England 2.4/1000  [DCLG Live tables on Homelessness (784) 14-15 Year]	In 2010/11 there were 200 applications equating to a rate of 2.1/1000. Therefore the rate of homelessness has doubled over the period. This is reflected in London which is up from 3.14/1000 England rate has increased by 0.3/1000	Doubling of homelessness rates. Needs to be focus on affordable and sheltered housing for these families.
Number of households and average number of persons per household	Total housing stock in Hounslow: 100,260 (2014) [DCLG Live Tables on Housing Stock 2015]  Persons per household: 2.7 [ONS 2011 Census Table H01UK, 2013]	Total housing stock London: 3,427,650 (2014) [DCLG Live Tables on Housing Stock 2015]  London Persons per household: 2.5 [ONS 2011 Census Table H01UK, 2013]  UK Persons per household: 2.3 [ONS 2011 Census Table H01UK, 2013]	Housing stock has increased by 5% from 94970 in 2009. Significant future development is projected.  Household size is projected to fall across the UK [DCLG, 2014 Household Size]. Hounslow has the fourth highest household size in London.	Provision needs to be made for household sizes in developments.

Housing Tenures	Hounslow: 25.5% Owned Outright 27% Mortgaged 19.2 Rented from Local Authority/Housing Association 28.3% Private Rent [GLA Housing Tenure and Household (APS) 2015]	London: 20.9% Owned Outright 27.2% Mortgaged 24.5% Rented from Local Authority/Housing Association 27.4% Private Rent  UK: 32.3% Owned Outright 31.8% Mortgaged 17.9% Rented from Local Authority/Housing Association 17.9% Private Rent [GLA Housing Tenure and Household (APS) 2015]	Since 2009, Hounslow has seen increase of 6% in Owner Occupation, with a corresponding movement from Mortgaged properties which fell by 7%. Similarly there has been a movement from Socially Rented into the private rent sector which has risen by 2.6%.  Overall, London has similar trends in Mortgaged properties and private rent but has maintained a higher proportion of Social Rented housing.  Compared to England, however Hounslow reflects London in having greater proportions of Renters in both categories.	Significant and increasing owner occupation indicates maturing housing stock.  Increased levels of private rent indicate higher turnover and possible impacts on service provision.
Housing Need	There is a need for 1355 dwellings per annum in Hounslow [London SHLAA 2013] Of which 541 per annum need to be affordable. [GLA SHLAA 2013]	Need in London for 4,238,870 homes to 2025 or 42,380 additional homes per year. [Further Alteration London Plan, 2015]	Significant increases in housing need – London Plan target for Hounslow has doubled from at least 470 to 822 pa.	Pressure on land for housing and provision of infrastructure to facilitate growth.
Housing Target and OAN	London Plan Target: 822 pa (12330 to 2030) Objectively Assessed Need (OAN): 1350 pa [London SHLAA 2013]	London: Target: 42,000 pa (420,000 by 2025) OAN: 49,000 pa [London Plan 2015]	Significant target set but also significant additional need for housing.	Pressure on house building, as well as house prices and rent levels.
Net Increase in new Housing and Tenure	Hounslow, 2014: Completions: 773 (94% of Target) Affordable: 34% Rolling 5 Year Average: 627 pa.	London (2013/14) Completions: 23,986 (91% of Target) Affordable housing: 20% Rolling 5 year average: 28,832 pa.	Large number of new units within the Borough, primarily focused in Hounslow and Brentford Areas. Significant target over next years.	Provision of suitable community infrastructure to support growth and continued growth to 2030.

Index of deprivation	Indices of Deprivation 2015: Hounslow was ranked 182 out of 326 local authorities in England in terms of proportion of areas in most 10% deprived, (1 the most deprived area and 326 the least deprived) [ONS IMD 2015]	London: Tower Hamlets is most deprived; ranked 24 of 326 Richmond Upon Thames least deprived; ranked 294. Hounslow centrally placed in London at 21 out of 33. Adjacent to Greenwich and Barnet. [ONS IMD 2015]	Improving position in terms of deprivation however still pockets within the borough.	Decreasing community cohesion, increasing housing, education, social and health service requirements; possibly need for more targeted training and local employment.
Number of children in full-time education and projection	Primary: 24,336 Secondary: 16,122 Other (Special Schools, PRU, Free Schools): 1382 [LBH School Rolls 2015] Projection to 2030 (Provisional), Primary: 27720 (13.9%) Secondary: 19878 (23.2%) [LBH School Roll Projections 2015]	London: Primary: 730,568 Secondary: 483,795 Other: 163,880 [DCLG Schools, pupils and their characteristics: January 2015: Table 7b]	High number of Primary School Pupils versus Secondary. Significant increase in pupil numbers to 2030.	Increase in number of children in full-time education.
% of pupils achieving 5 or more GCSEs at grade A*-C (and equivalent) including English and Maths	Hounslow: 75% in 2014-15 [DFE 2014]	London: 70.4% Outer London: 71.1% [DFE 2014]	Good levels of pupils achieving 5 A-Cs at GCSE. Significant improvement from 2010 (56.6%)	Maintain and improve performance In schools.

<p>% and Number within each qualification category</p>	<p>Hounslow: Aged 16-64: % with NVQ4+ 91,400 (49.9%) % with NVQ3 only 15,300 (8.4%) % with NVQ2 only 22,500 (12.3%) % with NVQ1 only - 13,000 (7.1%) % with no qualifications (NVQ) -16,500 (9.0%) % with other qualifications (NVQ) - 20,900 (11.4%)</p>	<p>London: Aged 16-64: % with NVQ4+ (49.1%) % with NVQ3 (14%) % with NVQ2 (11.7%) % with NVQ1 (7.8) % with no qualifications (NVQ) - (7.8%) % with other qualifications (NVQ) - (8%)</p>	<p>Significant improvements since 2009 in Hounslow – 15% increase in those holding more than 4 qualifications; fall of 6% in those holding no qualification.</p>	<p>Maintain and improve performance in Education and Further Education.</p>
--	---	--	--	---

**Appendix 2b: Table 2b Economic Baseline Data**

<p><b>Table 2b Economic Baseline Data</b></p>				
<p>Topic</p>	<p>Quantified Data</p>	<p>Comparators/Targets</p>	<p>Trends/Projections</p>	<p>Issues Identified</p>
<p>Number and % of economically active people</p>	<p>Total: 149,000 (79.1%)  <ul style="list-style-type: none"> <li>• Males: 86,700 (90%)</li> <li>• Females: 62,500 (67.9%)</li> </ul>           Oct 2014-Sep 2015 [Nomis 2016]</p>	<ul style="list-style-type: none"> <li>•London: 77.3% (Males: 84.5%/ Females: 70.2%)</li> <li>•UK: 77.7% ( Males: 83.2%/ Females: 72.3%)</li> </ul> Oct 2014-Sep 2015 [Nomis 2016]	<p>The number of people that are economically active within the borough has marginally decreased since 2011 by 0.2%. There has also been an increase in the number of males economically active versus females.</p>	<p>Increasing economic inactivity Lack of opportunities for female employment.</p>

<p>Number and % of persons in employment by sector</p>	<p>2014:</p> <ul style="list-style-type: none"> <li>• Total 140,200 Jobs, of which 75.8% are FT;</li> <li>• 3,500 (2.4%) Manufacturing Jobs;</li> <li>• 2,700 (2%) Construction Jobs;</li> <li>• 133,000 (94.9%) Service Jobs of which 16,000 (11.4%) Transport and Storage Jobs, 8500 (6.1%) Accommodation and Food Service Jobs, 34,800 (24.8%) Financial and Business Service jobs while 23,100 (16.5%) in Information and Communication.</li> </ul> <p>[NOMIS 2015]</p>	<p>2008 London:</p> <ul style="list-style-type: none"> <li>• 4.3% in manufacturing</li> <li>• 2.9% in construction</li> <li>• 92.4% in services</li> </ul> <p>[Nomis 2011]</p> <p>London 2014</p> <p>2.4% employee jobs in manufacturing;</p> <p>3.1% employee jobs in construction;</p> <p>94% employee jobs in services;</p> <p>4.8% of employee jobs in Transport and Storage;</p> <p>7.6% in Accommodation and Food Service;</p> <p>33% Financial and Other Business services;</p> <p>[NOMIS 2015]</p>	<p>Total Number of jobs has increased by 14.6% since 2009. Manufacturing jobs increased to 2007 but have declined up to 2014.</p> <p>Hounslow has the highest proportion involved in service jobs in Outer London, at 92.5%</p> <p>These jobs are have a particular Strength in Transport and Storage and Information and Communication which are both over twice the London Average. However the Borough is comparatively weak in Financial and Business services and public administration and Health.</p> <p>[NOMIS 2015]</p>	<p>Maintaining strength in Information and Communication and Storage and Transport. Weakness in construction and manufacturing sectors.</p>
<p>Median Household Income and Low Wages</p>	<p>2014 Estimate:</p> <p>Median Income in Hounslow: £44,490 [GLA Modelled household income estimates for small areas, London, 2001-2012]</p> <p>Estimated 11.5% of the population is working for below the 2014 Minimum Wage, 12<sup>th</sup> Highest In London</p> <p>Estimated 27.4% below the London Living Wage, 11<sup>th</sup> highest in London.</p> <p>[GLA APS Percentage people on Low Income 2014]</p>	<p>London:</p> <p>Median Income in Outer London: £48,530</p> <p>Estimated 9.9% of the population below Minimum Wage</p> <p>Estimated 25.7% population below London Living</p> <p>[GLA Modelled household income estimates for small areas, London, 2001-2012]</p> <p>[GLA APS Percentage people on Low Income 2014]</p>	<p>Average Hounslow income is below the London average but this gap has narrowed.</p> <p>Significant number of workers below the London Living Wage, but comparatively few below minimum wage. Below London Averages.</p>	<p>Low average yearly income</p> <p>Significant proportion of population below London Living wage.</p>

Unemployment	Total unemployed: 7,900 (5.3%) Males: 4,100 (4.7%) Females: 3800 (6.2%) [Nomis 2016]	London: Total Unemployed: 6.4% Male: 6.3% Female: 6.6% [Nomis 2016]	Reduction in Unemployment since 2011 of 2.7%, Larger fall in females versus males (3.4% vs. 2.1%). Lower than London averages for both men and women.	Continued unemployment.  Maintaining employment growth since 2011.
Claimant Rate	The jobseeker's allowance (JSA) is payable to people under pensionable age who are available for, and actively seeking work of at least 40 hours a week. January 2016: 2487 claiming JSA (1.4%) [Nomis 2016]	London: • 1.7% of population claiming JSA  England: • 1.5% of population claiming JSA [Nomis, 2016]	50.5% decrease in JSA claimants since 2010 in Hounslow. Hounslow has a comparatively low claimant count compared to boroughs which are commonly statistics neighbours such as Hackney.	Maintain low JSA rate and focus on building pay levels.
VAT registered local Businesses <i>Note: Statistics are no Longer Updated so less useful.</i>	Hounslow 2007: 1,110 registrations 660 de- registrations 8,085 stock-take [Nomis, 2011]	Hounslow 2006: 915 registrations 615 de- registrations 7,635 stock-take [Nomis, 2011]	Net increase in the number of VAT registered enterprises in Hounslow from 2006 to 2007 [Nomis, 2011]	High rate of Business Growth
Rates of business registration deregistration	Hounslow: Micro: 10815 (91.2%) Small: 785 (6.6%) Medium: 190 (1.6%) Large: 65 (0.5%)	London: Micro: 90.1% Small: 8% Medium: 1.5% Large: 0.4%	Since 2010 increase in proportion of small business of 1.4%, and a fall of 0.2% in large businesses – although the number has not changed in this time from 65.	Supporting micro business growth as well as retaining smaller businesses from leaving the borough.
Net change in employment floorspace (industrial, commercial and warehousing)	2011-2016 B1 uses: Net gain of 111,585m <sup>2</sup> B2 uses: -10622m <sup>2</sup> B8 uses: 12,138m <sup>2</sup> [AMR 2015]	London: No overall dataset.	Significant increase in office space over 5 year period, and decreases in B2 and B8 (Industrial land). Notable that London Plan Policy 4.4 aims to manage and reduce industrial land where appropriate.	Continue to support growth in B1 uses as well as protecting B2 in the west of the Borough.

Permitted Development (PD) Office to Resi-development.	2014-2015: 94 Applications made 86561m <sup>2</sup> outstanding loss of B1a 1390 Potential Units	London: No Comparable Dataset. However estimates place total potential office space loss at approximately 834,000sqm office loss and approximately 16,600 new dwellings. [London Councils, 2015]	Large Number of potential applications coming forward – unclear if these will be built out. More information is needed on vacancy.	Affordable office space availability. Office Space availability.
Number of hotel Rooms	365 hotel bedrooms completed (net) between 2010 and 2015. [AMR 2010-15]	Target of 2000 net additional bedrooms between 2007-2026 [GLA Hotel Demand Study, 2006]	<ul style="list-style-type: none"> <li>• Average of 73 rooms per year, but needs to increase to meet target.</li> <li>• Total 57% of GLA target met for hotel development.</li> </ul>	Increased numbers of hotel bedrooms.

## Appendix 2c: Table 2c Environmental Baseline Data

Table 2c Environmental Baseline Data				
Topic	Quantified Data	Comparators/Targets	Trends/Projections	Issues Identified
Rivers	N/A	Cargo trade on Thames was 11,087,000 tonnes for 2013. [London Plan Annual Monitoring Report 11 - 2015]	19% increase from 2008.	The sustainability of other alternative modes of transport
Water Consumption	The five year average for Hounslow between 2005/06 and 2009/10 is 159.9 litres per person per day. [EA Factsheet, 2010]	Average consumption in London in 2009/10 was 167 litres per person per day.	London and South East England are classified by the EA as areas under serious water stress.	High levels of water consumption Increased pressure on River Thames as a primary source for London's water

<p>Water Quality</p>	<p>Quality of watercourses in accordance with the EU Water Directive</p> <p>River Thames basin has:</p> <ul style="list-style-type: none"> <li>• 23% of surface waters are classified as good or better ecological status</li> <li>• 35% of groundwater bodies rated as good quantitative status</li> <li>• 28% of assessed surface water bodies are at good biological status</li> </ul> <p>[EA Factsheet, 2010]</p>	<p>Historic water quality of designated watercourses:</p> <ul style="list-style-type: none"> <li>• River Crane – 2003, the quality was found to be fair, this decline could have been due to low flows.</li> <li>• Longford River – good quality (grade B) between 1995-2000 and 2002-2004</li> <li>• River Brent – good water quality (grade B) in 2002. Decline in 2009 was unexpected from an unpolluted river of its size, type and location</li> </ul> <p>[EA Factsheet, 2010]</p>	<p>Water quality has generally increased in recent years with River Brent as the anomaly.</p> <p>Difficult to predict future water quality trends, however looking at past trends, it is hoped that water quality will continue to improve</p> <p>There is a lack of new data on river quality.</p>	<p>Pollution, human health, quality of life and climate change if water quality isn't improved.</p>
<p>Number of properties in floodplain zones</p>	<ul style="list-style-type: none"> <li>• Total of 16,022 properties in Flood zone 2 (1 in 1000 chance event)</li> <li>• [SFRA 2007/2015]</li> </ul>	<p>London target: no net loss of functional floodplain within referable applications</p> <p>[London Plan Annual Monitoring Report 2015]</p>	<p>Hounslow will continue to protect its floodplain zones to ensure that in the first instance, development is guided elsewhere in the borough, however as development pressure increases, it is inevitable that development will be guided towards more vulnerable areas.</p>	<p>Areas at risk of flooding and increased pressure for developments in more vulnerable areas.</p>

<p>Groundwater Protection</p>		<p>Target:</p> <ul style="list-style-type: none"> <li>• Consult the Environment Agency on all new residential and commercial developments.</li> <li>• Ensure the EA provide comments where required and report yearly with records of consultations</li> <li>• Ensure sites are cleaned up properly at redevelopment</li> <li>• Ensure correct drainage and bunding at all new sites</li> </ul>	<p>Trend:</p> <ul style="list-style-type: none"> <li>• Groundwater is being maintained as a potential resource for the borough and is being cleaned up where necessary.</li> <li>• The EA are no longer providing planning comments unless site is located in an SPZ1, parts of our Borough is classified as a Principle Aquifer and comments will be needed for some future developments.</li> </ul> <p>Projections:</p> <ul style="list-style-type: none"> <li>• An updated groundwater vulnerability map has been made available electronically;</li> <li>• Planning are using the mapping to identify sites and consult the EA where necessary;</li> <li>• Increase feedback and monitoring by the Environment Agency.</li> </ul>	<p>Sites are currently monitored on a case by case basis when it is brought to the attention of the land quality team through site investigation reports</p>
-------------------------------	--	---	---	--

<p>Land Quality</p>	<p>Sites with industrial history:</p> <ul style="list-style-type: none"> <li>Total sites: 2092</li> <li>Potentially contaminated without information: 1689</li> <li>19.2% sites looked at to date</li> </ul> <p>See Appendix 8a and 8b for industrial history and landfill mapping</p>	<p>Target:</p> <ul style="list-style-type: none"> <li>25% of sites will be signed off within five years</li> <li>Gain a detailed understanding of all highest risk sites in five years.</li> <li>Work with the London Plan to enhance the remediation of contaminated sites and bring land back into beneficial use.</li> </ul>	<p>Trend:</p> <ul style="list-style-type: none"> <li>Sites improving through liaison with Planning and Building Control</li> <li>Better legislation and understanding or requirements to remediate sites</li> <li>Mapped all potentially contaminated sites</li> </ul> <p>Projection:</p> <ul style="list-style-type: none"> <li>Sites will continue to be dealt with through the planning process</li> <li>Sign off more sites through remediation and clean up</li> </ul>	<p>Human health, quality of life and gassing issues (mainly associated with former industrial/commercial sites).</p> <p>Continued pressures of development and developments that do not consider the most sensitive end use</p>
<p>Levels of pollutants</p> <p>Progress towards meeting EU limit values for nitrogen dioxide and fine particles</p>	<p>Hounslow: Whole of the borough is located within an Air Quality Management Area</p> <p>NO<sup>2</sup> target of maximum: 40 u/g/m<sup>3</sup> Target achieved in 2/7 Monitoring Stations. Highest recording of 56 ug/m<sup>3</sup> at Chiswick Roundabout. However on average noticeable improvements since 2009 (average of 52.3 in 2009 versus 46.5 ug/m<sup>3</sup> in 2013).</p> <p>Pm<sup>10</sup> target: 40 ug/m<sup>3</sup> Target achieved across borough – However increases in Brentford, and Heston from previous monitoring years. Averages have increased since 2009 from 24.4ug/m to 25.7ug/m. [LBH Air Quality Progress Report 2014]</p>	<p>London: Progress being made, but still significant challenges. No summary statistical datasets available for entire capital.</p> <p>September 2015 – DEFRA published Draft Air Quality Plan for the achievement of Air Quality Limit Values for No<sup>2</sup> in London Area:</p> <ul style="list-style-type: none"> <li><i>The annual mean limit value: an annual mean concentration of no more than 40 µgm-3</i></li> <li><i>The hourly limit value: no more than 18 exceedances of 200 µgm-3 in a calendar year.</i></li> </ul> <p>[Defra 2015]</p>	<p>Decreases in levels of No<sup>2</sup> but increases in Pm<sup>10</sup> particulates. Especially acute in the Brentford Area, and primarily local points of intensity along major traffic artery of the M4/A4 corridor.</p>	<p>Air pollution, human health, quality of life</p>

Energy Efficiency	The Council has developed Energy Efficiency guidelines for developers to help compliance with London Plan and Hounslow Renewable Energy Targets. These require new developments to achieve a reduction in carbon emissions of 20% from both renewable energy and from total site emissions. [LBH 2015]	London Plan Policies 4A.4 Energy Assessment, 4A.7 Renewable Energy and 4A.9 Adaptation to Climate Change will aid the monitoring of energy efficiency within the borough. [London Plan 2015]  London is currently producing 820.1 GWh of renewable energy, up from 625.3 in 2011 [London Plan Annual Monitoring Report, 2015]	London will continue to increase the production of electricity and heat generation from renewable sources in future years.	Need to focus on new buildings being compliant with regulations. New developments need focus on renewable energy and low carbon construction.
SAP rating of development	Social housing: Of 1013 void properties surveyed, the average rating of developments was 70. [Hounslow Homes, 2011]	In the 2011 Survey, the average SAP rating of properties was 70. LBH, 2015]	No data available for private developments, but Council Owned and built housing has maintained a rating of 70	Energy efficiency
Carbon dioxide emission levels	Hounslow: • 5.4 tonnes per capita of CO2 emissions in 2013 • This has decreased from 7.1 tonnes in 2005 – [DECC, 2015]	Greater London: 4.9 tonnes per capita of CO2 emissions in 2013 This has decreased from 6.2 tonnes in 2005 [DECC, 2015]	Hounslow has seen a 33.1% per capita reduction since 2005 Greater London has seen a 33% per capita reduction since 2005. This trend of reduction is likely to continue across London.	Air pollution from road and aircraft traffic

<p>Heathrow Airport Noise Emissions</p>	<p>2014: Annual air transport movements in 2014: 470,695 Daily average air transport movements in 2014: 1,290 Number of passengers arriving and departing in 2014: 73.4 million [LHR Airports Limited 2015] Number of people living within &gt;57dBA Leq day contour 270,100 Number of people living within the &gt;72 dBA Leq day contour: 300 [CAA ERCD Report 1501 2014] See Appendix 3 of noise contours</p>	<p><i>No Comparable statistics.</i></p>	<p>Annual Air transport figures have increased from 466,400 (0.9%) in 2009, however there has been a significant increase in passengers (8.9%) over the same period.  There has also been an increase in the population living within the &gt;72dBA noise envelop of the airport, up from 245,450 (9.2%).  Depending upon the decision made on a third runway, these figures may increase significantly and create a large change to noise contours.</p>	<p>Noise Pollution and its effect on plans for the WoB</p>
<p>Recycling and composting</p>	<p>Hounslow, 2015: 31,888.70 tonnes recycled Recycling rate of 34.4% of waste. [LBH Waste and Recycling Department 2015]</p>	<p>London rate of 30.5% in 2015 [London Plan Annual Monitoring Report 2015]</p>	<p>Household recycling rates in Hounslow have increased marginally since 2009, with an improvement of 0.4% in recycling rate.</p>	<p>Marginal increases in amount of waste.</p>
<p>Waste sent to landfill</p>	<p>98,610 tonnes of household waste collected in 2014/15. [DFRA 2015]</p>	<p>London total waste landfill has fallen 3.3% from 5,264,224 tons to 5,095,432 2010-15. [DEFRA 2010/2015]</p>	<p>Household waste has increased by nearly 20,000 tonnes in the last 5 years reflecting significant change in waste levels beyond changes to recycling rates. 69,767 tonnes of household waste collected in 2008/09. [AMR 09/10]</p>	<p>Waste management and the impact of landfill sites on the environment</p>
<p>Size of open spaces and publicly accessible open spaces</p>	<ul style="list-style-type: none"> <li>• 3,085 hectares of open space, of which 842.3 hectares (116 spaces or</li> <li>• 27%) are publicly accessible;</li> <li>• 3.7 ha of publicly accessible open space per 1000 population. [Hounslow PPG17 study, 2011]</li> </ul>	<p>Neighbouring boroughs</p> <ul style="list-style-type: none"> <li>• Ealing: 840 ha (2.6 ha per 1000 population)</li> <li>• Harrow: 757 ha (3.4 ha per 1000 population)</li> <li>• Hammersmith and Fulham: 231 ha (1.3 ha per 1000 population) [Hounslow PPG17 study, 2011]</li> </ul>	<p>Hounslow will continue to protect open spaces across the borough by maintaining and enhancing existing and new spaces.</p>	<p>Quality, quantity and access to open space</p>

<p>Parks and open space usage</p>	<ul style="list-style-type: none"> <li>• 68% of residents use a park or open space at least once a week.</li> <li>• The highest user group is made up of 25-44 year olds (56%)</li> <li>• The highest usage is amongst Chiswick residents and the lowest is amongst the West Area.</li> <li>• 77% residents in the borough travel 15 minutes or under to a park.</li> <li>• The most popular reasons for visiting a park were to walk (50.6%), relax (39.2%) or to take children to play (38.7%).</li> </ul> <p>[PPG17 study, 2011]</p>	<p>No comparable data available for the usage of open spaces across London</p>	<p>Hounslow will continue to protect open spaces across the borough by maintaining and enhancing existing and new spaces and promoting the use of such spaces for enjoyment and a healthy lifestyle.</p>	<p>Quality, quantity and access to open space</p>
<p>Improve local biodiversity</p>	<p>Single Data List indicator 160-00 – Proportion on local sites where positive conservation management is being or has been implemented. Reported to DEFRA annually.</p> <p>LBH has 47 Sites of Importance for Nature Conservation (SINCs) also known as Local Sites.</p> <p>In 2014/15, 35 out of 47 (74.5percent) of the boroughs SINCs were in positive conservation management.</p> <p>[LBH 2015]</p>	<p>London: Sites of Importance for Nature Conservation cover 19.26% of Greater London, a total of 30,806 Acres. [GIGL, 2016]</p>	<p>Hounslow will continue to protect and enhance biodiversity across the borough and particularly within existing nature conservation areas.</p>	<p>To maintain and enhance nature conservation areas</p>
<p>Special Protection Areas (SPAs) and Ramsar sites</p>	<p>Kempton Nature Reservoir is designated as a Ramsar site and as an SPA, both of which are part of the wider South West London Waterbodies designation. The site was designated at Ramsar site under Criteria 6 “if it regularly supports 1% of the individuals in a Population of one species or subspecies of waterbird.” [JNCC, 2011]</p>	<p>There are two of each designated SPA and Ramsar sites in London</p>	<p>Hounslow will continue to maintain and protect the SPA and Ramsar site within the borough.</p>	<p>Condition of SPAs and Ramsar sites</p>

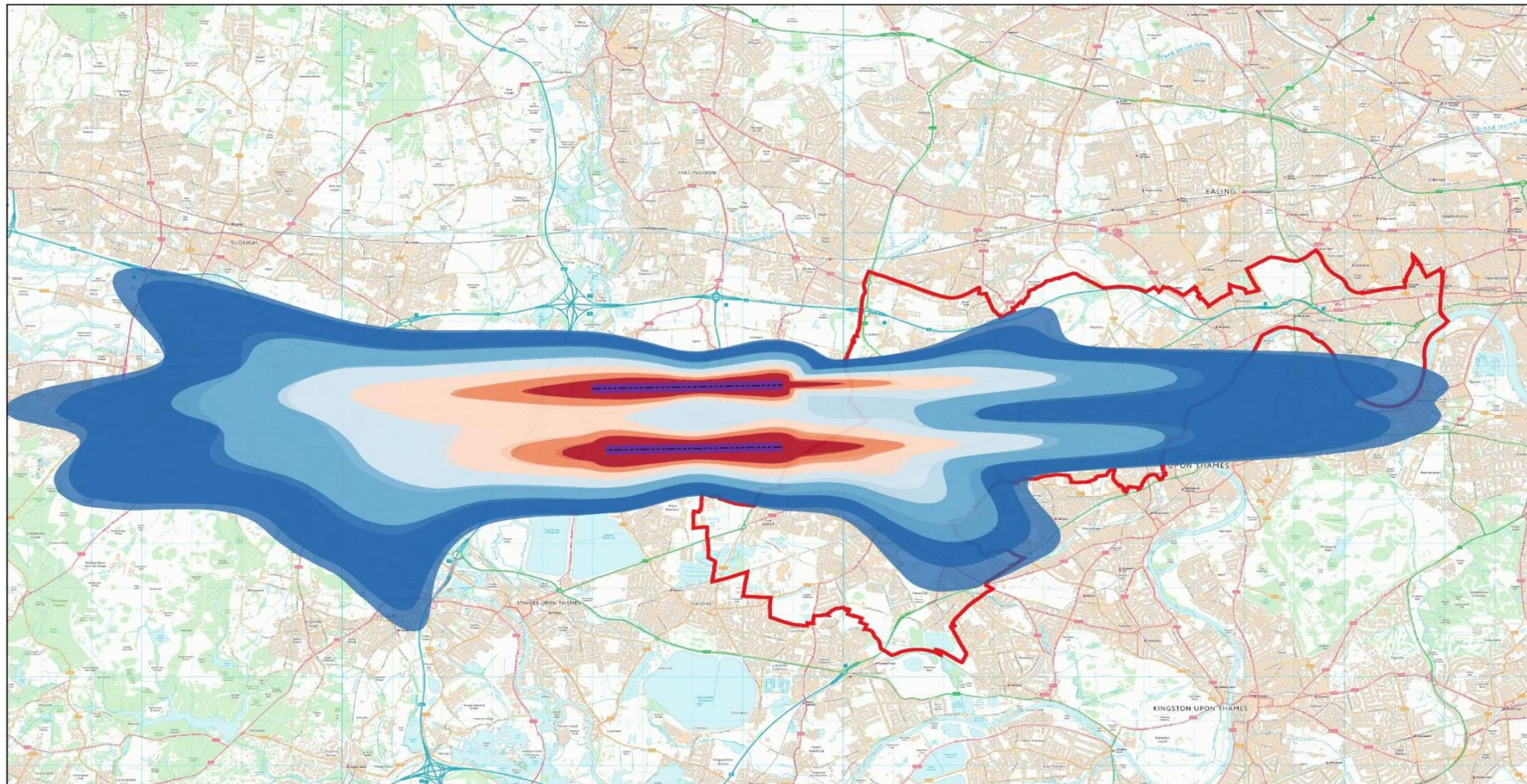
<p>Sites of Special Scientific Interest (SSSIs)</p>	<p>There are two SSSIs within the borough:</p> <ul style="list-style-type: none"> <li>• Kempton Nature Reservoir (condition: Unfavourable - Recovering)</li> <li>• Syon Park (condition: Unfavourable - Recovering) [Natural England, 2015]</li> </ul>	<p>Government's Public Service Agreement (PSA) targets on SSSIs: 95% in favourable or recovering condition by 2010. Compares with London 71.72% and England 88.35% [Natural England, 2010]</p>	<p>Condition of Kempton Nature Reserve has decline but it is recovering.</p>	<p>Condition of SSSIs need to be monitored closely. Note: Statistics are not available nationally.</p>
<p>Green Flag Award Scheme</p>	<p>Total of 17 Green Flag sites standard in 2015. Total of Most recent designation of 13 won award in 2015. [www.greenflagaward.org.uk]</p>	<p>Achievement of Green Flag standard in 2015: Beaversfield Park, Bedfont Lakes Country Park, Boston Manor Part, Chiswick Back Common, Church Road Allotments, Dukes Meadow, Feltham Green, Inwood Park, Lampton Park, Redless Park, St Dunstand's Park, St John's Gardens</p> <p>359 awards were given out in London in 2014-5, Hounslow made up 3.6% of awards. [www.keepbritaintidy.org.uk]</p>	<p>Majority of large parks in the borough have green flag designation. Big increase in number 2014-5.</p>	<p>Condition of green Spaces.</p>
<p>Allotments</p>	<ul style="list-style-type: none"> <li>• 28 Allotments in the borough, with a large number of sites across the borough. [LBH 2015]</li> </ul>	<p>Fall of 6.2% from 33 managed allotments in Hounslow. [Laing, 2010/LBH2015]</p>	<p>Some sites suffer from low occupancy rates (notably in the West of the borough), despite local efforts to promote their use. Leads to allotments being partly derelict and require higher maintenance. Some low quality allotments have been removed.</p>	<p>Quality, quantity and access to allotments</p>

Number and hectares of designated nature conservation areas	47 Sites of designated nature conservation areas in Hounslow. 5.92 hectares per 1000 population See Appendix 4 for designated nature conservation areas across the borough; SSSIs and LNRs are monitored regularly, however SINCs are managed according to their designation and monitored as and when data is available; [LBH 2015]	Fall from 61 sites in 2010.  Hectares of greenspace per 1000 population: Ealing: 1.97 Hillingdon: 2.05 Spelthorne: 2.37 [LB Ealing 2015, Hillingdon 2015, Spelthorne Council 2015]	Large range of nature conservation areas predominantly in good shape. However fall in numbers since 2010 which is a risk.	Environmental protection and biodiversity.
Conservation areas (built environment)	Hounslow: 28 conservation areas; Chiswick High Road Conservation Area was designated in 2015.  12 Areas of Special Character.	Conservation areas in West London; • Ealing: 29 • Richmond: 72 • Hammersmith and Fulham: 45 • Hillingdon: 30 • Spelthorne District, Surrey: 8	Chiswick High Road was designated in 2015 bringing total from 27 to 28. This gave the Chiswick High Road extra protection for its unique character.	Protection of conservation areas against inappropriate development
Green chains and corridors	<ul style="list-style-type: none"> <li>The M4 Linear Park; The Thames Riverside; Open land adjacent and near to the Borough's Rivers; the River Crane; The Duke of Northumberland River; the Brent River and the Grand Union Canal.</li> </ul>	No comparable dataset	Increasing need to protect green spaces and green chains and encourage their use.	Quality, quantity and access to green chains and corridors
Cycling routes in the borough	There are 165 km of cycle routes throughout the borough designated through different organisations including: <ul style="list-style-type: none"> <li>London Cycle Network+</li> <li>Greenways (funding from TFL)</li> <li>Local Cycle Networks</li> <li>Cycle Superhighway (CS9) has been delayed substantially.</li> </ul>	London has a total of 3204 km of cycle routes, of which Hounslow is the third highest, making up 5.1% of total routed.	Increasing number of cycle routes throughout the borough. Continuous promotion of sustainable travel and healthier lifestyles.	Accessibility. Safety issues when travelling on the roads

Listed buildings, local listings and Heritage at Risk	<p>Listed Buildings</p> <ul style="list-style-type: none"> <li>There are 890 listed buildings in the Borough, including 58 Grade I structures, 33 Grade II* and 799 of Grade 2 status.</li> </ul> <p>Locally listed buildings: 272 as at 30<sup>th</sup> Aug 2006  21 Structures at Risk:  1 Grade I building  4 Grade I* buildings  16 Grade II</p>	<p>London target:  Reduction in the proportion of heritage at risk as a percentage of the total number of listed buildings in London.</p> <ul style="list-style-type: none"> <li>Rise of 141 buildings at risk (0.5%) in numbers of buildings at risk across London between 2011-2015 [London Plan AMR 11, 2015]</li> </ul>	Heritage at Risk are increasing across the borough	<p>Historic environment and cultural heritage</p> <p>There is a need to protect and reduce the number of structures at risk within Hounslow</p>
Scheduled Ancient Monuments and Archaeology Priority Areas	<p>There are five SAMs within the borough which are:  Romano-British Site, Double Ditched Enclosure, Kempton Pumping House, Tudor Court Features, Chiswick House</p> <p>There are also a number of APAs within the borough. Both the SAMs and APAs can be seen on the map in the Local Plan</p>	<p>No targets, but continued protection.  The Mayor, in partnership with English Heritage will support the identification and presentation of London's archaeological resources including SAMs and APAs.  [London Plan, 2015]</p>	Larger amount of archaeology priority areas taken into account. Figures have stayed the same for SAMs	Protect SAMs and APAs and ensure all developments take areas into account if developing nearby
Green Belt in the Borough	<p>Hounslow  Total area of green belt in borough: 1,221.35 ha</p>	<p>London: 35,170  [London First, 2015]</p>	Large area of Green Belt to the West of Hounslow of varying quality.	Access to open space and environmental quality.
Developments approved in designated open space	<ul style="list-style-type: none"> <li>0.792 hectares proposed loss of open space through granted planning permissions (Jan – Dec 2010) [LDD Query]</li> </ul> <p>Where open space is lost, justifications are always provided and only granted where deemed appropriate. In most cases, open space lost to development is deemed to contribute little value to the current area.</p>	<p>London:  Loss of 20 HA of open space in 2015.  [London Plan AMR 11 2015]</p>	Significant decrease in open space lost to developments in the last year	Reuse of land

Mode of travel for work and education	In 2010: Car: 35%; Motorcycle: 1%; Cycle: 3%; Train: 16%; Bus: 10%; Walking: 5%; Other: 0%; N/A or not provided: 14% [AMR 2009/10] <i>Updated statistics not available.</i>	In 2009: Car: 35%; Motorcycle: 1%; Cycle: 4%; Train: 13%; Bus: 8%; Walking: 6%; Other: 1%; N/A or not provided: 10% [AMR 2009/10] <i>Updated statistics not available.</i>		Change the culture of reliance on motor vehicles  Sustainable modes of transport
Road Traffic collisions	Collisions on the Boroughs Roads in 2011-14: 3165; 14 Fatal Accidents; 252 Severity 1 (Serious Injury); 2899 Severity 2 (Slight Injury); 3165. [TFL 2015]	Overall in London (2011-2014): 388 Fatalities; 9434 Severity 1; 87,715 Severity 2; 97,692 Total. [TFL 2015]	Collisions on the borough's roads have increased by almost 50% from 2203 total accidents. However these crashed have increased in their lethality with almost a six times as many Severity 1 and 2 compared to 2007 and 2010 (252 S2 and 1933 S3)[TFL 2015]	Increased lethality and occurrence of accidents on roads.
Number of cars owned per number / % of households	<ul style="list-style-type: none"> <li>Total of 94,902 cars and vans 29,985 or 31.5% of households: None;</li> <li>42,744 or 45% of households: 1 car;</li> <li>16,986 or 17.8% of households: 2 cars;</li> <li>3,942 or 4.4% of households: 3 cars;</li> <li>1245 or 1.3% of households: 4 cars or more</li> </ul> [ONS 2011 Census]	Outer London: <ul style="list-style-type: none"> <li>30.7% of households: None</li> <li>44.4 % of households: 1 car</li> <li>24.9% of households: two or more cars</li> </ul> [ONS 2011 Census]	Increase in number of families with no car of around 4%; Increase in number of households with 3 or 4 or more cars since 2001. Matches overall trends within London.	Reliance on motor vehicles
Change in public transport accessibility	See Appendix 5 for Public Transport Accessibility Map 2016.	In comparison to the 2010 PTAL map, the 2015 mapping shows slight increases in PTALS. These are the result of improvements to bus routes and frequency.	No significant changes over last 10 years. Significant need for new infrastructure to improve existing PTALS.	Public transport accessibility Pressure on existing public transport infrastructure if not improved
Secured by Design	The Council do not currently monitor design against 'Secured By Design', however will endeavour to assess and ensure that developments are built to a high quality	London Plan policy 4A.3 Sustainable Design and Construction will aid the monitoring of design within the borough.	Currently not monitored, ensure more buildings are assessed against the standards to encourage safe and secure developments	Ensuring high standards of sustainable urban design

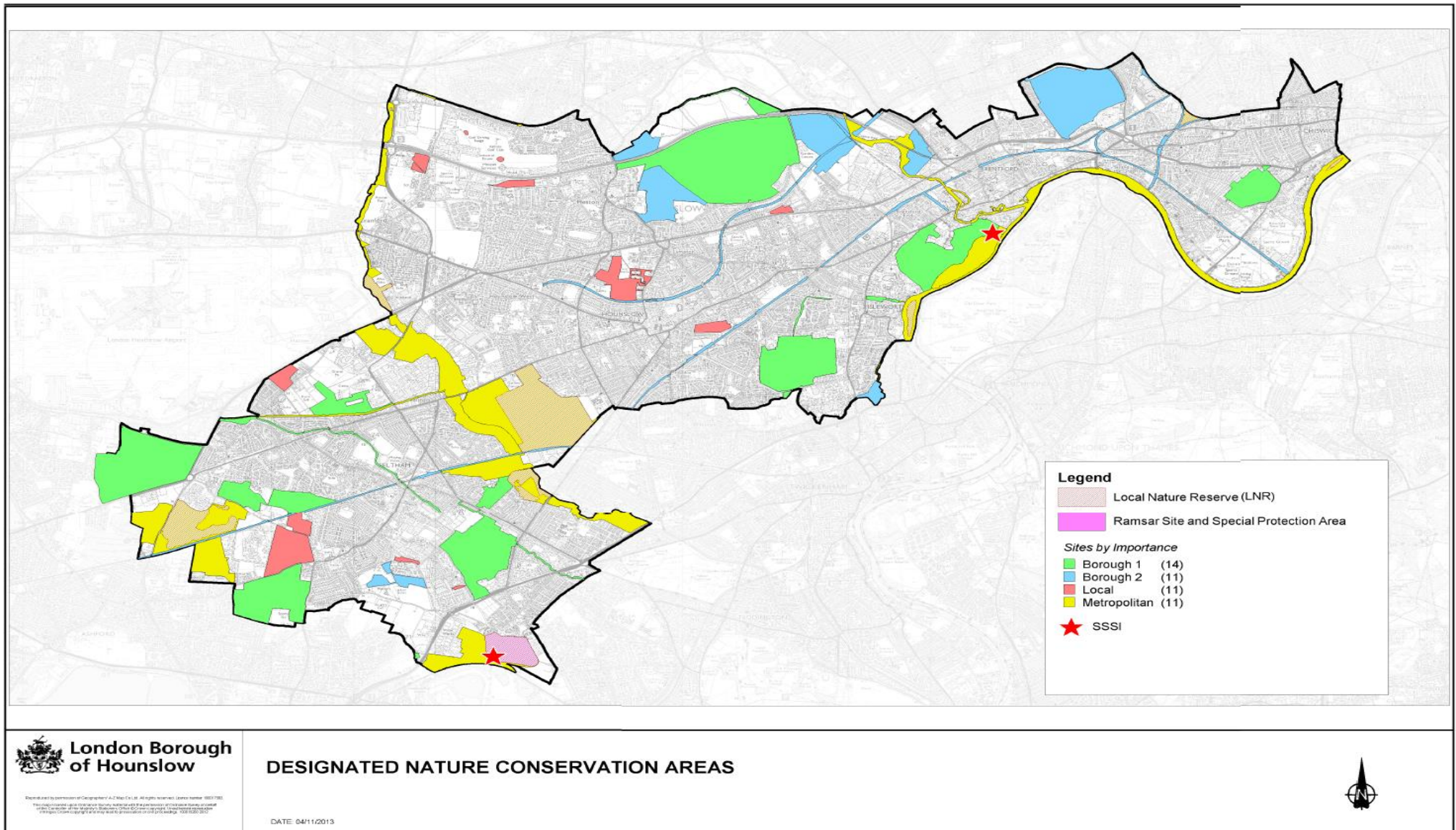
## Appendix 3 Heathrow Noise Contours (2015)



Reproduced from the Ordnance Survey mapping with the permission of the Controller of Her Majesty's Stationery Office ©Crown copyright. Unauthorised reproduction infringes ©Crown copyright and may lead to prosecution or civil proceedings.  
LB Hounslow Licence No. LA 100019263 2014

1:80000

## Appendix 4 Designated Nature Conservation Areas



# Access to public transport

