



LONDON BOROUGH OF HOUNSLOW COUNCIL
DRAFT OPEN SPACE STUDY
SEPTEMBER 2018

Knight, Kavanagh & Page Ltd
Company No: 9145032 (England)

MANAGEMENT CONSULTANTS

Registered Office: 1 -2 Frecheville Court, off Knowsley Street, Bury BL9 0UF

T: 0161 764 7040 E: mail@kcp.co.uk www.kcp.co.uk



6643

Quality assurance	Name	Date
Report origination	CD/AL	August 2018
Quality control	CMF	August 2018
Client comments		
Revised version		
Agreed sign off		

Contents

PART 1: INTRODUCTION	1
1.1 Report structure	2
1.2 National context	2
PART 2: METHODOLOGY	5
2.1 Analysis area and population	5
2.2 Auditing local provision (supply)	6
2.3 Quality and value	7
2.4 Quality and value thresholds	9
2.5 Identifying local need (demand)	10
2.6 Accessibility catchments	10
PART 3: SUMMARY OF SURVEY AND VISITS	12
3.1 Community Survey	12
3.2 Children's Survey	17
3.3 Friends Group Workshop	19
3.4 Site Audit Overview	21
3.5 Summary	22
PART 4: PARKS AND GARDENS	23
4.1 Introduction	23
4.2 Current provision	23
4.3 Accessibility	24
4.4 Quality	27
4.5 Value	29
4.6 Summary	30
PART 5: NATURAL AND SEMI-NATURAL GREENSPACE	31
5.1 Introduction	31
5.2 Current provision	31
5.3 Accessibility	33
5.4 Quality	36
5.5 Value	37
5.6 Summary	38
PART 6: AMENITY GREENSPACE	39
6.1 Introduction	39
6.2 Current provision	39
6.3 Accessibility	40
6.4 Quality	45
6.5 Value	46
6.6 Summary	47
PART 7: PROVISION FOR CHILDREN AND YOUNG PEOPLE	48

7.1 Introduction	48
7.2 Current provision	48
7.3 Accessibility	48
7.4 Quality	54
7.5 Value	55
7.6 Summary	56
PART 8: ALLOTMENTS	57
8.1 Introduction	57
8.2 Current provision	57
8.3 Accessibility	57
8.4 Quality	62
8.5 Value	63
8.6 Summary	64
PART 9: CEMETERIES/CHURCHYARDS	65
9.1 Introduction	65
9.2 Current provision	65
9.3 Accessibility	65
9.4 Quality	67
9.5 Value	68
9.6 Summary	69
PART 10: GREEN CORRIDORS	70
10.1 Introduction	70
10.2 Current provision	70
10.3 Accessibility	70
10.4 Quality	73
10.5 Value	74
10.6 Summary	74
PART 11: PROVISION STANDARDS	76
11.1: Quality and value	76
11.2: Accessibility	79
11.3: Quantity	86
PART 12: POLICY ADVICE AND STRATEGIC RECOMMENDATIONS	88
12.1: Recommendations	88
12.2: Implications to developer contributions	89
APPENDIX ONE: SURVEY CONFIDENCE LIMITS	90

Glossary

DDA	Disability Discrimination Act
DPD	Development Plan Document
FIT	Fields in Trust
FOG	Friends of Group
GIS	Geographical Information Systems
KKP	Knight, Kavanagh and Page
LDF	Local Development Framework
LNR	Local Nature Reserve
MHCLG	Ministry of Housing, Communities and Local Government
MUGA	Multi-use Games Area (an enclosed area with a hard surface for variety of informal play)
NPPF	National Planning Policy Framework
NSALG	National Society of Allotment and Leisure Gardeners
ONS	Office of National Statistics
PPG	Planning Policy Guidance
PPS	Playing Pitch Strategy
SOA	Super Output Areas
SPD	Supplementary Planning Document
SSSI	Sites of Special Scientific Interest

LONDON BOROUGH OF HOUNSLOW OPEN SPACE STUDY

PART 1: INTRODUCTION

This is the Draft Open Space Study prepared by Knight Kavanagh & Page (KKP) for the London Borough of Hounslow (LBH). It provides detail with regard to what open space provision exists in the area, its condition, distribution and quality.

This study is intended to assist in the Councils process of undertaking two specific partial reviews of the Local Plan. The Council has undertaken a fair amount of background work in relation to open spaces. This document is intended to act as a check and update of the previous work; considering any changes in provision in order to ensure the Local Plan review is informed by up-to-date and accurate information.

The document utilises the audit data to set local provision standards to help identify potential surpluses/deficiencies and priorities for open spaces.

The table below details the open space typologies included within the study:

Table 1.1: Open space typology definitions

Typology	Primary purpose
Parks and gardens	Accessible, high quality opportunities for informal recreation and community events.
Natural and semi-natural greenspaces	Wildlife conservation, biodiversity and environmental education and awareness.
Amenity greenspace	Opportunities for informal activities close to home or work or enhancement of the appearance of residential or other areas.
Provision for children and young people (including teenage provision)	Areas designed primarily for play and social interaction involving children and young people, such as equipped play areas, MUGAs, skateboard areas and teenage shelters.
Allotments and Community Schemes	Opportunities for those people who wish to do so to grow their own produce as part of the long term promotion of sustainability, health and social inclusion.
Cemeteries, disused churchyards and other burial grounds	Quiet contemplation and burial of the dead, often linked to the promotion of wildlife conservation and biodiversity.
Green Corridors	Routes which provide for walking, cycling or horse riding, whether for leisure purposes or travel. May also offer opportunities for wildlife mitigation.

In accordance with best practice recommendations, a size threshold of 0.2 hectares has been applied to the inclusion of some typologies within the study. This means that, in general, sites that fall below this threshold are not audited unless identified as being significant e.g. play spaces.

In order for planning policies to be 'sound', local authorities are required to carry out a robust assessment of need for open space, sport and recreation facilities. We advocate that the methodology to undertake such assessments should still be informed by best practice including the Planning Policy Guidance 17 (PPG17) Companion Guidance; *Assessing Needs and Opportunities* published in September 2002.

LONDON BOROUGH OF HOUNSLOW

OPEN SPACE STUDY

The National Planning Policy Framework (NPPF) has replaced PPG17. However, assessment of open space facilities is still normally carried out in accordance with the Companion Guidance to PPG17 as it still remains the only national best practice guidance on the conduct of an open space assessment.

Under paragraph 96 of the NPPF, it is set out that planning policies should be based on robust and up-to-date assessments of the needs for open space, sports and recreation facilities and opportunities for new provision. Specific needs and quantitative or qualitative deficiencies and surpluses in local areas should also be identified. This information should be used to inform what provision is required in an area.

1.1 Report structure

Open spaces

This report sets out the supply and demand issues for open space provision across Hounslow. Each part contains relevant typology specific data. Further description of the methodology used can be found in Part 2. The report as a whole covers the predominant issues for all open spaces as defined in best practice guidance:

- Part 3: Summary of consultation and site audit
- Part 4: Parks and gardens
- Part 5: Natural/semi-natural greenspace
- Part 6: Amenity greenspace
- Part 7: Provision for children/young people
- Part 8: Allotments
- Part 9: Cemeteries
- Part 10: Green corridors
- Part 11: Provision standards

1.2 National context

National Planning Policy Framework (2018)

The NPPF sets out the planning policies for England. It details how these are expected to be applied to the planning system and provides a framework to produce distinct local and neighbourhood plans, reflecting the needs and priorities of local communities.

It states that the purpose of the planning system is to contribute to the achievement of sustainable development. It establishes that the planning system needs to focus on three themes of sustainable development: economic, social and environmental. A presumption in favour of sustainable development is a key aspect for any plan-making and decision-taking processes. In relation to plan-making the NPPF sets out that Local Plans should meet objectively assessed needs.

LONDON BOROUGH OF HOUNSLOW

OPEN SPACE STUDY

Under paragraph 96 of the NPPF, it is set out that planning policies should be based on robust and up-to-date assessments of the needs for open space, sports and recreation facilities and opportunities for new provision. Specific needs and quantitative and qualitative deficiencies and surpluses in local areas should also be identified. This information should be used to inform what provision is required in an area.

As a prerequisite paragraph 97 of the NPPF states that existing open space, sports and recreation sites, including playing fields, should not be built on unless:

- ◀ An assessment has been undertaken, which has clearly shown the site to be surplus to requirements; or
- ◀ The loss resulting from the proposed development would be replaced by equivalent or better provision in terms of quantity and quality in a suitable location; or
- ◀ The development is for alternative sports and recreational provision, the needs for which clearly outweigh the loss.

Communities and Local Government Committee: Public parks - Seventh Report of Session (2016–17)

Discusses in detail the three key questions on the inquiry into public parks: why parks matter, what challenges are facing the parks sector, and how we can secure a sustainable future for parks. A summary of the three themes is set out below:

Why do parks matter?

Clear evidence of the high usage and role of parks in serving a wide range of users including children and young people is strongly discussed. Furthermore, the many benefits of parks are recognised including:

- ◀ Physical and mental health and wellbeing
- ◀ Active travel
- ◀ Community cohesion and identity
- ◀ Biodiversity and access to nature
- ◀ Local economy and growth
- ◀ Climate change and the environment

Whilst the diverse role of parks is widely acknowledged as indisputable, the focus on parks as physical assets and operational costs can overlook the benefits provided. There is a need for assessment of parks to be more nuanced in a way which values it in terms of health and wellbeing, amenity and leisure.

What challenges are facing the parks sector?

A number of demands and trends are impacting on the management, maintenance and use of parks across the country. These include:

- ◀ Competing demands and tensions between parks users
- ◀ Funding reductions
- ◀ Health and safety
- ◀ Access to revenue and capital funding
- ◀ Unequal distribution of parks and green spaces
- ◀ Planning policy
- ◀ Green infrastructure

How can we secure a sustainable future for parks?

LONDON BOROUGH OF HOUNSLOW OPEN SPACE STUDY

No one size fits all solution is recognised. However, it is highlighted that local authorities are best placed to make decisions appropriate to their local circumstances. Other key considerations include:

- ◀ The role of the community
- ◀ Innovation and alternative approaches
- ◀ A statutory duty to provide and maintain parks
- ◀ Coordination and leadership

LONDON BOROUGH OF HOUNSLOW OPEN SPACE STUDY

PART 2: METHODOLOGY

This section details the methodology undertaken as part of the study. The key stages are:

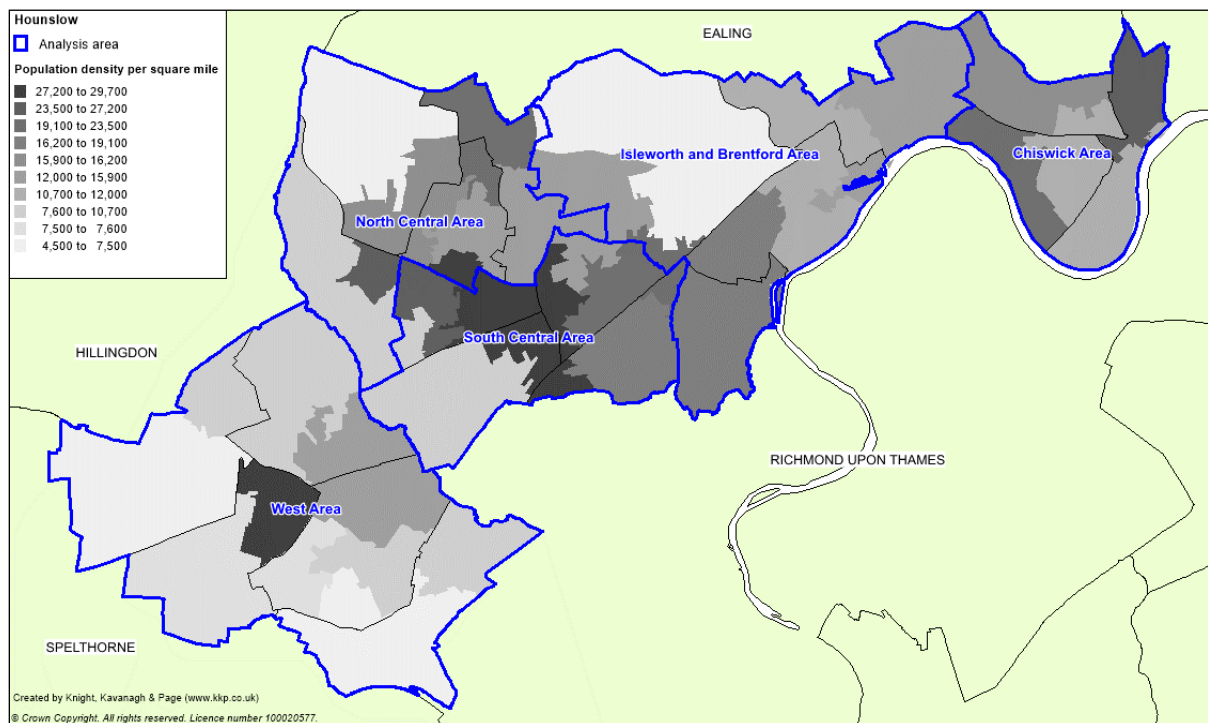
- ◀ 2.1: Analysis areas
- ◀ 2.2: Auditing local provision
- ◀ 2.3: Quality and value
- ◀ 2.4: Quality and value thresholds
- ◀ 2.5: Identifying local need
- ◀ 2.6: Accessibility catchments

2.1 Analysis area and population

The London Borough of Hounslow is split into five analysis areas for the purposes of mapping and audit analysis. This is in order to provide a more detailed level of analysis and to help provide more informed recommendations.

The five analysis areas are intended to reflect the recognisable places of the different areas of the Borough. Figure 2.1 shows the five analysis areas.

Figure 2.1: Analysis areas



LONDON BOROUGH OF HOUNSLOW OPEN SPACE STUDY

Population figures for each of the five analysis areas are set out in Table 2.1. ONS Mid-Year 2016 figures at a Lower Super Output level are initially utilised.

Table 2.1: Analysis areas with populations

Analysis area	Population*
Chiswick Area	34,451
Isleworth and Brentford Area	55,731
North Central Area	52,539
South Central Area	59,182
West Area	67,932
London Borough of Hounslow	269,835

2.2 Auditing local provision (supply)

The assessments' focus is on those sites publicly accessible (i.e. generally private sites or land, which people cannot access, are not included). Sites are initially identified using existing mapping data from previous and related open space studies.

In accordance with best practice recommendations, a size threshold of 0.2 hectares is applied to the inclusion of some typologies within the study. Sites of a smaller size, particularly for the typologies of amenity greenspace and natural and semi-natural greenspace tend to have a different role. Often this is for visual purposes (e.g. small incremental grassed areas such as highway verges) and is therefore considered as offering less recreational use in comparison to other forms of open space. Subsequently sites below 0.2 hectares for these typologies are not audited.

Each site is classified based on its primary open space purpose, so that each type of space is counted only once. However, the multi-functional role and use of some types of open space is acknowledged.

A total of 272 sites are identified and included within the study. The audit, and the report, utilise the following typologies in accordance with best practice:

- ◀ Parks & gardens
- ◀ Natural & semi-natural greenspace
- ◀ Amenity greenspace
- ◀ Provision for children & young people
- ◀ Allotments
- ◀ Cemeteries/churchyards
- ◀ Green corridors

* ONS Mid-Year Estimates 2016

LONDON BOROUGH OF HOUNSLOW

OPEN SPACE STUDY

Database development

All information relating to open spaces is collated in the project open space database (to be supplied as an Excel electronic file). All sites identified and assessed as part of the audit are recorded within the database. The database details for each site are as follows:

Data held on open spaces database (summary)

- ◀ KKP reference number (used for mapping)
- ◀ Site name
- ◀ Primary Typology
- ◀ Size (hectares)
- ◀ Access (whether a site has restricted access)
- ◀ Site visit data (i.e. quality and value scores)
- ◀ Analysis area

Sites are primarily identified by KKP in the audit using official site names, where possible, and/or secondly using road names and locations.

2.3 Quality and value

Each type of open space (included within the audit) receives separate quality and value scores. This also allows for application of a high and low quality/value matrix to further help determine prioritisation of investment and to identify sites that may be surplus to a particular open space typology.

Quality and value are fundamentally different and can be unrelated. For example, a high quality space may be inaccessible and, thus, be of little value; whereas a rundown space of poor quality may be the only one in an area and thus be immensely valuable. As a result, quality and value are also treated separately in terms of scoring.

Analysis of quality

Data collated from site visits is initially based upon those derived from the Green Flag Award scheme (a national standard for parks and green spaces in England and Wales, operated by Keep Britain Tidy). This is utilised to calculate a quality score for each site visited. Scores in the database are presented as percentage figures. The quality criteria used for the open space assessments carried out for all open space typologies are summarised in the following table.

Quality criteria for open space site visit (score)

- ◀ Physical access, e.g. public transport links, directional signposts,
- ◀ Personal security, e.g. site is overlooked, natural surveillance
- ◀ Access-social, e.g. appropriate minimum entrance widths
- ◀ Parking, e.g. availability, specific, disabled parking
- ◀ Information signage, e.g. presence of site information, notice boards
- ◀ Equipment and facilities, e.g. adequacy of provision such as seats, benches, bins, toilets
- ◀ Healthy, safe and secure, e.g. fencing, gates, staff on site
- ◀ Maintenance and cleanliness, e.g. condition of general landscape & features
- ◀ Groups that the site meets the needs of, e.g. elderly, young people

LONDON BOROUGH OF HOUNSLOW

OPEN SPACE STUDY

Within the databases the criteria are weighted to reflect their level of importance to each different open space typology. For example, a greater presence and variety of ancillary facilities (e.g. seating, bins, paths, play equipment, landscaping, etc) and their management is expected at a park than in comparison to an amenity greenspace or other type of open space. This is intended to reflect the general role and use of each open space type.

Analysis of value

Site visit data plus desk-based research is calculated to provide value scores for each site identified. Value is defined in best practice guidance in relation to the following three issues:

- ◀ Context of the site i.e. its accessibility, scarcity value and historic value.
- ◀ Level and type of use.
- ◀ The wider benefits it generates for people, biodiversity and the wider environment.

In addition, the NPPF refers to attributes to value such as beauty and attractiveness of a site, its recreational value, historic and cultural value and its tranquillity and richness of wildlife. These elements are all considered as part of the value scoring.

The value criteria set for audit assessment is derived as:

Value criteria for open space site visits (score)

- ◀ Level of use, e.g., evidence of different user types (e.g. dog walkers, joggers, children) throughout day, located near school and/or community facility
- ◀ Context of site in relation to other open spaces and proximity to housing
- ◀ Structural and landscape benefits, e.g., well located, high quality defining the identity/ area
- ◀ Ecological benefits, e.g., supports/promotes biodiversity and wildlife habitats
- ◀ Educational benefits, e.g., provides learning opportunities on nature/historic landscapes
- ◀ Social inclusion and health benefits, e.g., promotes civic pride, community ownership and a sense of belonging; helping to promote physical and mental well-being
- ◀ Cultural and heritage benefits, e.g., historic elements/links (e.g. listed building, statues) and high profile symbols of local area
- ◀ Amenity benefits and a sense of place, e.g., attractive places that are safe and well maintained; helping to create specific neighbourhoods and landmarks
- ◀ Economic benefits, e.g., enhances property values, promotes economic activity and attracts people from near and far

In addition, a number of national indicators are also utilised to help inform a sites value. These are focused around health and socio-economic circumstances. These include:

- ◀ Indices of Deprivation (Office for National Statistics)
- ◀ Prevalence of obesity by area of child residence (Public Health England)
- ◀ Wellbeing (Greater London Authority)

The above data is available on a ward basis or similar. Open space sites have been rated in the context of each of the indicators in order to highlight those sites in areas of Hounslow identified as most deprived, with a higher child obesity level and/or with a lower overall wellbeing score. Sites in any areas identified against these indicators receive additional scores to reflect they have the ability or potential to help address issues relating to health and wellbeing. Consequently, the benefits of the site are important and need to be recognised within the value scoring.

2.4 Quality and value thresholds

To determine whether sites are high or low quality (as recommended by guidance); the results of the site assessments are colour-coded against a baseline threshold (high being green and low being red). The primary aim of applying a threshold is to identify sites where investment and/or improvements may be required. It can also be used to set an aspirational quality standard to be achieved in the future and to inform decisions around the need to further protect sites from future development (particularly when applied with its respective value score in a matrix format).

The only national benchmark available for quality of parks and open spaces is the 66% pass rate for Green Flag. However, the Green Flag pass rate is not appropriate for every open space typology as it is designed to represent a sufficiently high standard of provision.

For example, a park would be expected to feature a greater presence and variety of ancillary facilities (e.g. seating, bins, paths, play equipment, landscaping, etc) in comparison to an amenity greenspace or other type of open space.

Furthermore, the 66% threshold for Green Flag is not appropriate as a different scoring mechanism is used (albeit the criteria for this study is derived from the categories used as part of Green Flag).

For each typology a different set or weighting for each criterion of quality is used. This is in order to better reflect the different roles and uses of each open space type. Consequently, a different threshold level is set for each open space typology.

In order to distinguish between higher and lower quality sites, the quality thresholds are set to reflect the average scores for each typology within the Borough. For example, the average of the 107 amenity greenspace sites to receive a score is 67%. Consequently, the quality threshold is set at 60% (setting the threshold at 65% only provides a limited number of sites below the threshold and which does not reflect sites of a lower quality). In our experience this works as an effective method to reflect local levels of provision and their variability.

Table 2.2: Quality and value thresholds by typology

Typology	Quality threshold	Value threshold
Parks and gardens	60%	20%
Natural and semi-natural greenspace	45%	20%
Amenity greenspace	60%	20%
Provision for children and young people	60%	20%
Allotments	50%	20%
Cemeteries/churchyards	55%	20%
Green corridors	60%	20%

For value, there is no national guidance on the setting of thresholds. The 20% threshold applied is derived from our experience and knowledge in assessing the perceived value of sites.

A high valued site is one deemed to be well used and offering visual, social, physical and mental benefits. Therefore whilst 20% may initially seem low - it is a relative score. One designed to reflect those sites that meet more than one aspect of the criteria used for assessing value (as detailed earlier). As when a site meets more than one criterion for value it scores more than 20%.

2.5 Identifying local need (demand)

Consultation to identify local need for open space provision has been carried out via a combination of a workshop, surveys and telephone interviews. It has been conducted with key local authority officers and stakeholders. An online community survey and a survey for children to complete were also hosted. These were promoted by the Council with 757 community survey responses and 131 children's survey responses being received. The consultation ran from 1st July to 31st July 2018.

The purpose of the surveys is to gather views of the public and highlight their opinions regarding the accessibility, availability and quality of open spaces. It helps to statistically support the audit assessment findings in relation to quality, quantity and access of provision. This in turn assists in the recommendations for open space across the area.

Further explanation to the purpose of the survey, data confidence and limitations is set out in Appendix One.

The findings of the consultations are used, reviewed and interpreted to further support the results of the quality and value assessment. The responses and trends are set out later in the report.

2.6 Accessibility catchments

Accessibility catchments for different types of provision are a tool to identify communities currently not served by existing facilities. It is recognised that factors that underpin catchment areas vary from person to person, day to day and hour to hour. For the purposes of this process, this problem is overcome by accepting the concept of 'effective catchments', defined as the distance that would be travelled by the majority of users.

Catchment areas are overlaid on the mapping of sites to help identify potential gaps in provision. In effect these are circular 'as the crow flies' areas (radial catchments). The use of radial catchment areas is a common and accepted method to identify potential gaps in provision.

Results of the community survey have been used to set initial accessibility catchments. These are presented in Table 2.3 and are applied to help inform potential deficiencies in each form of open space provision.

No catchments are set for the typologies of cemeteries. It is difficult to assess such typologies against catchment areas due to their nature and usage. For cemeteries, provision should be determined by demand for burial space.

LONDON BOROUGH OF HOUNSLOW OPEN SPACE STUDY

Table 2.3: Accessibility catchments from respondents

Open space type		Accessibility catchment	Equivalent radial distance
Parks & Gardens		15-minute walk time	1,200m
Natural & Semi-natural Greenspace		30-minute drive time	n/a
Amenity Greenspace		15-minute walk time	1,200m
Play areas & provision for young people	Children's play	10-minute walk time	800m
	Youth provision	15-minute walk time	1,200m
Allotments		15-minute walk time	1,200m

The London Plan also offers guidance on the catchment areas of open space. This classifies sites by their size. A summary of the benchmark guidance is set out in Table 2.4.

Table 2.4: London Plan benchmarks

Open space type	Size guide	Distance from homes
Regional Parks	400 hectares	3.2 to 8 kilometres
Metropolitan Parks	60 hectares	3.2 kilometres
District Parks	20 hectares	1.2 kilometres
Local Parks and Open Spaces	2 hectares	400 metres

LONDON BOROUGH OF HOUNSLOW

OPEN SPACE STUDY

PART 3: SUMMARY OF SURVEY AND VISITS

This section provides a summary of the responses to the online community survey and children’s survey. It also describes generic trends and findings from the quality and value ratings as part of the audit undertaken. Site specific and typology issues are covered in the relevant sections later in this report. A summary of the responses is set out on the following pages. Appendix One sets out the confidence limits and intervals to the survey.

3.1 Community Survey

An online community survey was hosted on the Council website and promoted via social media and the Councils communication team. A total of 757 responses were returned for the main survey and 131 responses for the primary survey. The findings of the consultations are used, reviewed and interpreted to further support the report findings. A summary of the responses is set out on the following pages.

As part of the survey some open space typologies were given a slightly different name compared to how they are referred to within the report. This was to ensure respondents were clear about what types of open space were being covered within the question. It also allows for greater understanding of some sub-categories of provision (i.e. the difference between play areas for young children and provision categories for older groups such as teenagers). Most names used are similar. A summary of the differences is set out below.

Table 3.1: Open space typologies

Survey typologies	Study typologies
Local park or public garden	Parks and gardens
Country park	Covered as part of parks and gardens
Nature reserve, common or woodland	Covered as part of natural and semi-natural greenspace
Play area for young children	Covered as part of provision for children and young people
Teenage provision (e.g. skate parks, MUGA)	Covered as part of provision for children and young people
General amenity greenspace	Amenity greenspace
Allotments and community gardens	Allotments
Cemeteries/ churchyards	Cemeteries/ churchyards
Outdoor networks (e.g. cycle paths, footpaths, bridleways)	Covered as part of green corridors

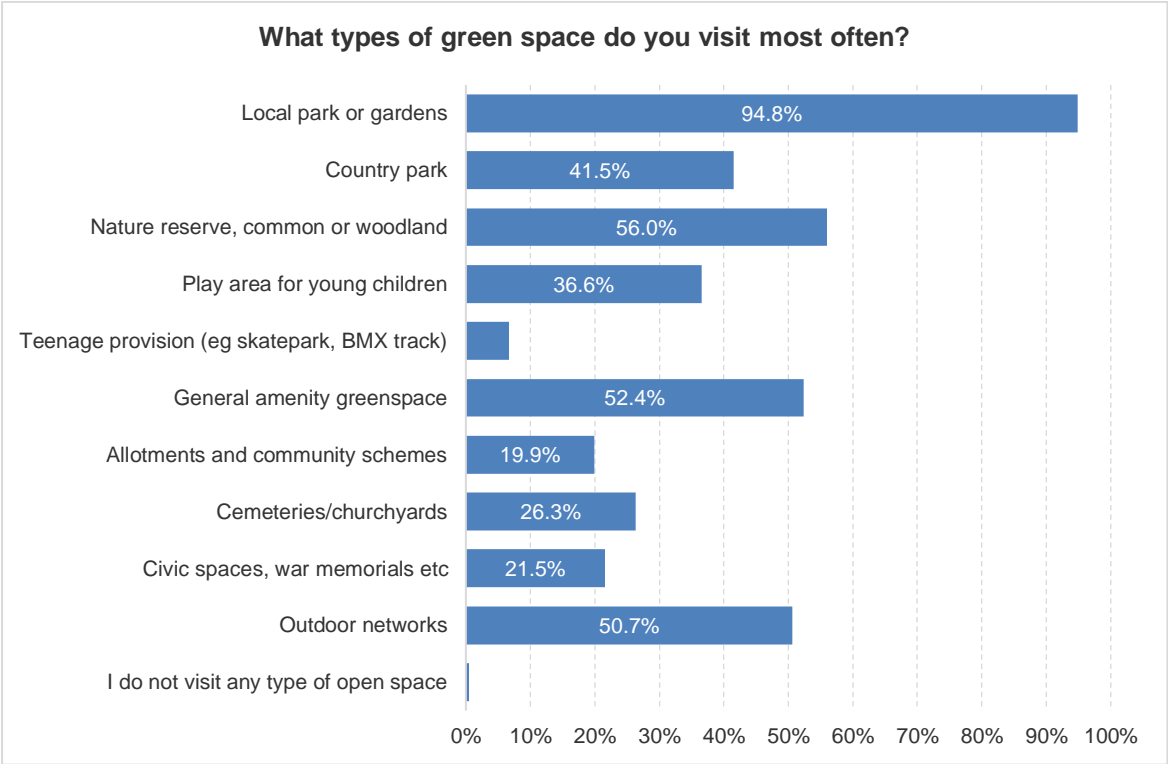
LONDON BOROUGH OF HOUNSLOW OPEN SPACE STUDY

3.1.1 Usage

The most popular forms of provision to visit are parks (95%). This followed by nature reserve, common or woodland (56%), general amenity greenspace (52%) and outdoor networks (51%).

Provision such as allotments (20%), civic space (21%) and cemeteries and churchyards (26%) are visited less often basis. Only 7% of respondents identify visiting teenage provision most often.

Figure 3.1.1: Types of green space visited most often



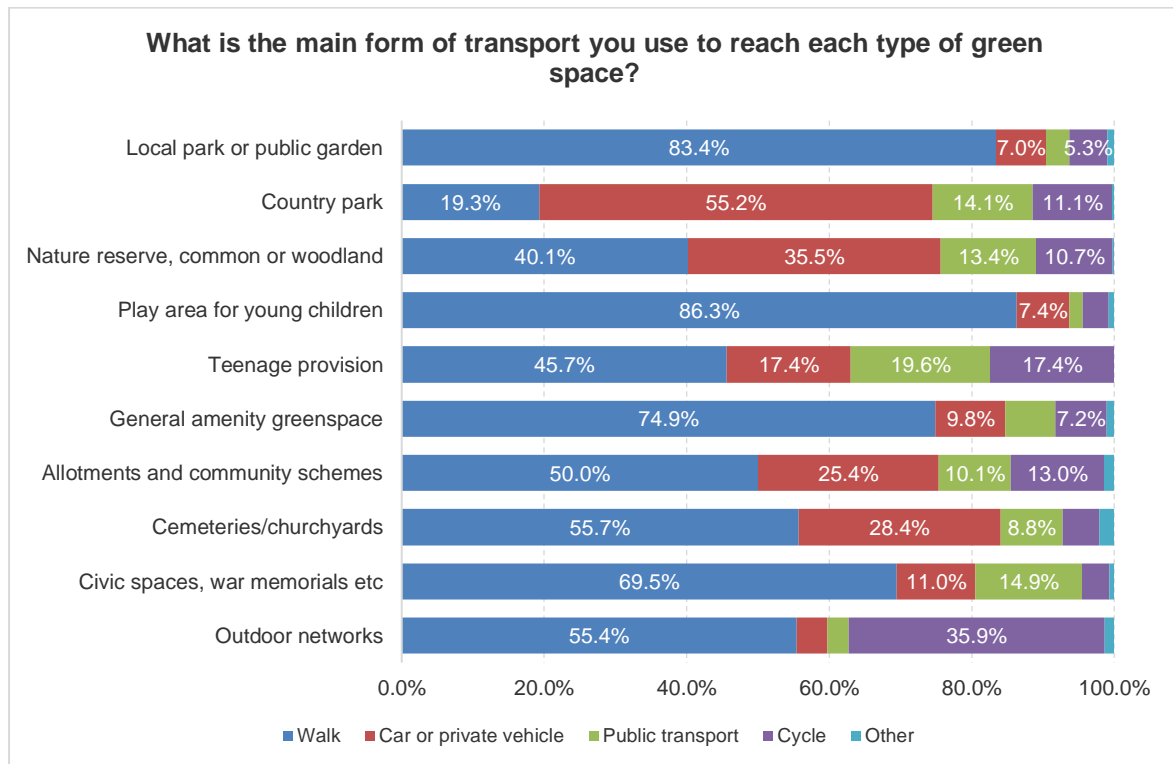
LONDON BOROUGH OF HOUNSLOW OPEN SPACE STUDY

3.1.2 Accessibility

Results from the survey shows that the majority of individuals walk in order to access most types of provision. This is most evident in play areas for young children (86%) and parks (83%). Amenity greenspace (75%) and civic space (70%) are also popular forms of provision to be accessed by walking.

The exception is for country parks which most respondents (55%) signal they access such provision by car or private vehicle.

Figure 3.1.2: Mode of travel to green space sites



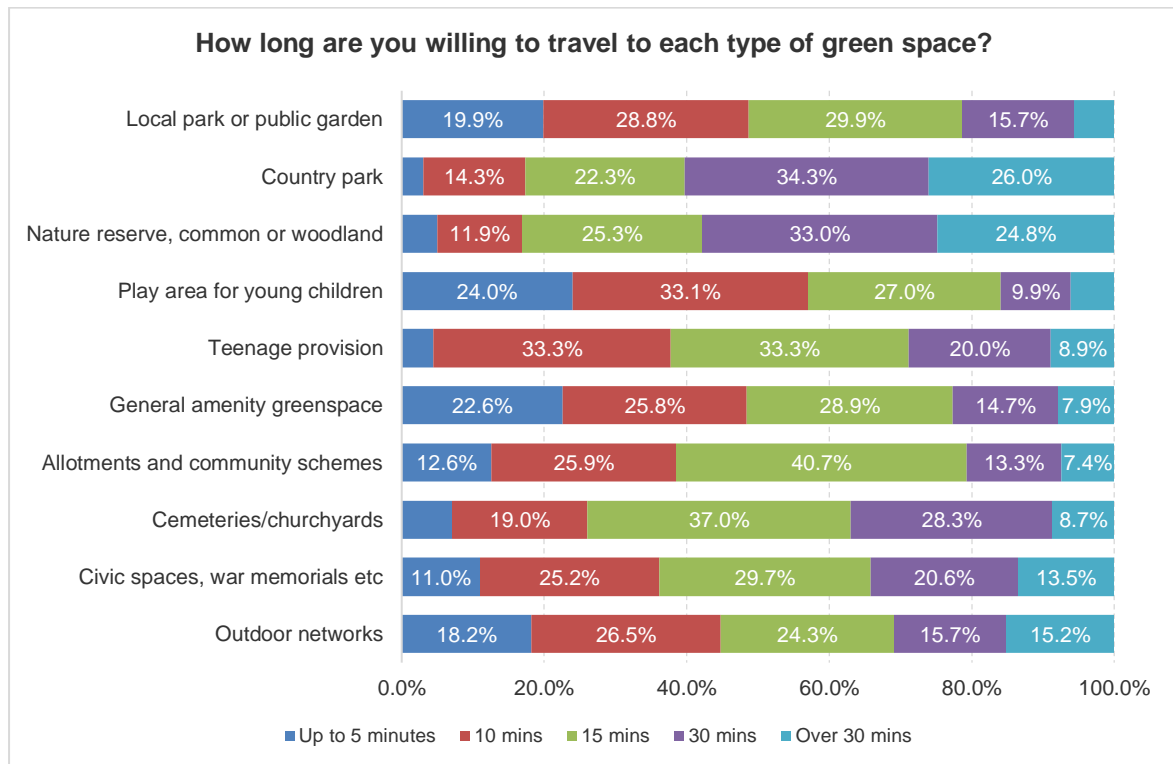
LONDON BOROUGH OF HOUNSLOW OPEN SPACE STUDY

For some provision such as country parks and nature reserves, there is a willingness to travel further distances; with 34% of respondents stating they would travel up to 30 minutes to access a country park and 33% willing to travel 30 minutes to a nature reserve.

For other forms of provision, respondents show a willingness to travel a shorter amount of time; often up to 15 minutes. For children’s play provision this again shorter with most respondents’ willing to travel up to 10 minutes.

These results have helped inform the catchment mapping for each typology later in the report.

Figure 3.1.3: Time willing to travel to green space sites



LONDON BOROUGH OF HOUNSLOW

OPEN SPACE STUDY

3.1.3 Availability

In general, respondents consider the availability of green space provision to be quite satisfactory. Over half of respondents' (54%) rate availability as quite satisfactory. A further 18% rate availability as very satisfactory. The positive view towards availability is strengthened by the small percentage of respondents to rate availability as either quite unsatisfactory (11%) or very unsatisfactory (2%).

Table 3.1.1: Satisfaction with availability of green spaces

Very satisfied	Quite satisfied	Neither satisfied or dissatisfied	Quite dissatisfied	Very dissatisfied	No opinion
18.0%	54.3%	14.6%	11.1%	2.0%	1.0%

3.1.4 Quality

Similarly, most respondents consider the quality of green space provision to be quite satisfactory. Nearly half of respondents' (49%) rate quality as quite satisfactory. A further 11% rate quality as very satisfactory. The positive view towards quality is strengthened by the small percentage of respondents to rate quality as either quite unsatisfactory (14%) or very unsatisfactory (5%).

Table 3.1.2: Satisfaction with quality of open spaces

Very satisfied	Quite satisfied	Neither satisfied or dissatisfied	Quite dissatisfied	Very dissatisfied	No opinion
10.6%	49.3%	20.5%	14.3%	5.2%	1.4%

Respondents to the survey were asked what they thought would improve green space provision for them. The most common answers include better maintenance and care of features (76%), greater attractiveness sites (57%) and more wildlife/habitat promotion (56%).

Table 3.1.3: Which of these options would improve green space provision for you?

Answer option	Percentage of respondents
Greater attractiveness (e.g. flowers, trees)	56.7%
Better maintenance and care of features	76.4%
Improved access to and within sites	21.2%
More public events	13.7%
Greater information on sites	19.0%
Better and wider range of facilities	40.8%
Greater community involvement	24.0%
More wildlife/habitat promotion	56.5%
Other	11.5%

Respondents were asked how much they agree or disagree with the statement that 'visiting green spaces makes them feel better?'

LONDON BOROUGH OF HOUNSLOW

OPEN SPACE STUDY

Nearly three quarters of respondents (73%) strongly agree that visiting green spaces makes them better. A further 23% agree. Only 1.6% disagree or strongly disagree with the statement.

Table 3.1.4: Agree/disagree with benefit of green spaces

Strongly agree	Agree	Neither agree or disagree	Disagree	Strongly disagree	No opinion
73.1%	22.9%	2.4%	1.3%	0.3%	1.3%

3.2 Children's Survey

An online children's survey was hosted on the Council website and promoted via social media and the Councils communication team. A total of 131 responses were returned.

Respondents were asked what types of green space they like to visit. The most common type of green space to visit is parks with 89%. Other forms of green space they like to visit are play areas (80%), nature areas (69%), small grassed areas near home (48%) and sports pitches (39%).

Table 3.2.1: Visits to green space

Answer option	Percentage of respondents
Parks	89.4%
Play areas	79.7%
Nature areas	69.1%
Small grassed areas near home	48.0%
Sports pitches	39.0%
None	1.6%

The most common reason for visiting these types of green space is to play (90%). Visit with family (67%), meeting with friends (65%), exercising (56%) and to play sport (49%) are commonly also cited reasons for visiting.

Table 3.2.2: Reason for visits to green space

Answer option	Percentage of respondents
To play	89.5%
To exercise	55.6%
To walk the dog	15.3%
Visit with family	66.9%
Meet with friends	65.3%
To see wildlife or animals	45.9%
To play sport	49.2%

Respondents were asked what type of play provision they prefer to visit. A slightly greater proportion of respondents prefer more natural play opportunities (60%) as opposed to more traditional play equipment (40%).

LONDON BOROUGH OF HOUNSLOW OPEN SPACE STUDY

Table 3.2.3: What types of play do you prefer?

Answer option	Percentage of respondents
More natural play opportunities with landscaping	60.2%
Traditional play equipment	39.8%

Respondents were asked what would make green spaces near them better. The most popular answers include sites to be clean and tidy (71%), toilets (62%) and for more play equipment (62%).

Table 3.2.4: Improvements to green space

Answer option	Percentage of respondents
More equipment	61.8%
Clean and tidy	70.7%
Closer to home	34.9%
More things to do at site	60.2%
More wildlife and nature	39.0%
Toilets	61.8%
Other	6.5%

Respondents to the survey were also asked whether they agreed or disagreed with the following statements. A fairly even proportion agree and disagree with sites being clean and tidy.

Table 3.2.5: Cleanliness and tidiness

The open spaces I visit are very clean and tidy	Percentage of respondents
Agree	56.6%
Disagree	43.4%

A slightly greater proportion of respondents (53%) disagree there are lots of thing to do at the sites they visit.

Table 3.2.6: Things to do

There are lots of things to do at the sites I visit	Percentage of respondents
Agree	47.5%
Disagree	52.5%

LONDON BOROUGH OF HOUNSLOW

OPEN SPACE STUDY

3.3 Friends Group Workshop

In addition, a workshop with members from several friends of groups was held to discuss their views on green space and priorities to open space provision.

As part of the event, a SWOT Analysis was used as a discussion board in order to assist with the views and thoughts towards open space provision across the area. A summary of the main findings is set out below.

Table 3.3.1: Summary of friends group workshop

Strengths
<ul style="list-style-type: none"> ◀ Sites have different roles which can be utilised e.g. key strategic site with heritage vs local open space ◀ All have unique characteristics e.g. Boston Manor and Osterley Park ◀ Natural history and key features e.g. River Thames and River Crane ◀ Public transport network to sites ◀ Number of good open space sites in area which underpin other strategies ◀ A 'green' Borough – linked to the above points. Borough has 'green' and 'blue' corridors ◀ Links to health agenda and promoting healthy lifestyles. Parkrun operates etc ◀ Wildlife value and benefits open spaces provide and bring to the area ◀ Important assets e.g. Hounslow Heath, Syon Park, Dukes Meadow, Bedfont Lake etc ◀ Support of London Plan Policy ◀ Presence and work of Friends of Groups at open spaces
Weaknesses
<ul style="list-style-type: none"> ◀ Not maintained well enough ◀ Lack of pathways – makes sites unusable for some and also during certain months ◀ Poor contracting ◀ People do not feel safe at some sites ◀ Facilities at sites e.g. seating, bins, play areas are not well maintained and look scruffy ◀ Not signposted well enough ◀ Some sites have reputations e.g. drug use, ASB, violence ◀ No ownership ◀ Lack of links between some sites – need to improve green space network ◀ Lack of coherent picture relating to councils' priorities and objectives for open space ◀ Too much development ruining sites

LONDON BOROUGH OF HOUNSLOW

OPEN SPACE STUDY

Opportunities

- ◀ To encourage community involvement and bring communities together (ownership)
- ◀ To increase usage with right things in place
- ◀ Places for community events/festivals
- ◀ Provide interpretation signage/maps to inform what's in area and guide tourists
- ◀ Provide wheelchair and buggy access
- ◀ Make sites more welcoming – natural surveillance and directions to open space
- ◀ Improve sites through s106 and CIL
- ◀ Creative solutions
- ◀ Collaborations between groups and organisations
- ◀ More facilities e.g. cafes, seating, toilets etc so people spend more time in sites
- ◀ Involvement of communities in local site design/new facilities – could reduce ASB and encourage use
- ◀ Potential for allotments in West of Borough to be used by people from other areas
- ◀ Improve health and wellbeing – provision of green gyms, activities etc
- ◀ Promotion of destination sites – heritage/tourists etc
- ◀ Protective designations and safeguard of Fields In Trust
- ◀ Green corridors/active travel – links between open space to encourage activity
- ◀ Encourage schools to use sites for learning and sport
- ◀ Provide areas for dog walkers
- ◀ Lampton 360 – a more partnership approach
- ◀ Use development of Heathrow to advantage in order to improve open space
- ◀ Engagement with friends' groups and council
- ◀ Funding opportunities explained and available

Threats

- ◀ Development – housing and Heathrow
- ◀ Unprotected Green Belt
- ◀ Lack of funding and resources
- ◀ Poor access/lack of security when using sites. Not user friendly for all (wheelchairs etc)
- ◀ Poor planning
- ◀ Short term thinking and not looking at bigger picture
- ◀ Lack of joined up approach
- ◀ Lack of training for people looking after parks or lack of care e.g. contractors
- ◀ Over commercialisation e.g. pay to do activities
- ◀ Sports facilities – sometimes take over a site and remove its other purposes
- ◀ Lack of responsibility e.g. whose job is it – council/contractor/other, means things fall through the net
- ◀ Air quality
- ◀ Councils attitudes to green space
- ◀ Loss of community cohesion – people don't want to go to parks/be part of events
- ◀ Reputations of certain sites e.g. drug use, ASB, violence
- ◀ Lack of coherent picture relating to councils' priorities and objectives for open space

LONDON BOROUGH OF HOUNSLOW

OPEN SPACE STUDY

3.4 Site Audit Overview

This section provides a summary of the quality and value ratings for each typology. Within Hounslow, there is a total of over 1,202 hectares of open space. The largest contributor to provision is natural and semi-natural greenspace (598 hectares) and parks and gardens (335 hectares). Both contain sites of significant size.

Table 3.4.1: Overview of open space provision

Open space typology	Number of sites	Total amount (hectares)
Park and gardens	23	335
Natural & semi-natural greenspace	23	598
Amenity greenspace	107	171
Provision for children & young people	68	8
Allotments	28	57
Cemeteries/churchyards	13	33
Green corridors	10	n/a
TOTAL	272	1,202

3.4.1 Quality

The methodology for assessing quality is set out in Part 2 (Methodology). The table below summarises the results of the quality assessment for open spaces.

Table 3.4.2: Quality scores for assessed open space typologies

Typology	Threshold	Scores (%)			No. of sites	
		Lowest score	Average score	Highest score	Low	High
Park and gardens	60%	50%	66%	85%	5	18
Natural & semi-natural greenspace	45%	27%	51%	76%	6	15
Amenity greenspace	60%	47%	67%	87%	28	79
Provision for children & young people	60%	30%	62%	75%	23	45
Allotments	50%	29%	60%	80%	3	25
Cemeteries/churchyards	55%	51%	59%	70%	3	10
Green corridors	60%	32%	59%	75%	5	5
TOTAL					73	197

There is generally a good level of quality across all open space sites. This is reflected in nearly three quarters (73%) of sites scoring above their set threshold for quality.

LONDON BOROUGH OF HOUNSLOW

OPEN SPACE STUDY

3.4.3 Value

The methodology for assessing value is set out in Part 2 (Methodology). The table below summarises the results of the value assessment for open spaces.

Table 3.4.3: Value scores for assessed open space typologies

Typology	Threshold	Scores (%)			No. of sites	
		Lowest score	Average score	Highest score	Low	High
Park and gardens	20%	30%	46%	67%	0	23
Natural & semi-natural greenspace		27%	39%	76%	0	21
Amenity greenspace		23%	35%	68%	0	107
Provision for children & young people		35%	46%	55%	0	68
Allotments		19%	26%	44%	2	26
Cemeteries/churchyards		28%	38%	50%	0	13
Green corridors		28%	32%	38%	0	10
TOTAL						2

Nearly all sites are assessed as being above the threshold for value, reflecting the role and importance of open space provision to local communities and environments. There are two allotment sites to rate just below the value threshold. Both are noticeably smaller allotment sites with only a handful of plots present.

A high value site is considered to be one that is well used by the local community, well maintained (with a balance for conservation), provides a safe environment and has features of interest; for example, good quality play equipment and landscaping. Sites that provide for a cross section of users and have a multi-functional use are considered a higher value than those offering limited functions and viewed as unattractive.

3.5 Summary

- ◀ A total of 272 sites are identified as open space provision; equivalent to over 1,202 hectares.
- ◀ Nearly three quarters (73%) of sites rate above the threshold set for quality.
- ◀ With the exception of two allotment sites, all open space is assessed as above the value threshold. This reflects the importance of provision and its role offering social, environmental and health benefits.

LONDON BOROUGH OF HOUNSLOW OPEN SPACE STUDY

PART 4: PARKS AND GARDENS

4.1 Introduction

This typology often covers urban parks and formal gardens (including designed landscapes), which provide accessible high-quality opportunities for informal recreation and community events. Country park or similar sites may also provide opportunities and functions often associated with parks and should therefore be recognised within a parks section.

4.2 Current provision

There are 23 sites classified as parks and gardens. This is an equivalent of over 335 hectares. No site size threshold has been applied and, as such, all known sites are included within the typology.

Table 4.1: Parks and gardens overview

Analysis area	Parks and gardens		
	Number	Size (ha)	Current provision (ha per 1,000 population)
Chiswick Area	3	28.11	0.82
Isleworth and Brentford Area	11	188.90	3.39
North Central Area	2	20.85	0.40
South Central Area	4	15.69	0.27
West Area	3	82.10	1.21
London Borough of Hounslow	23	335.65	1.24

The largest site and biggest contributor to provision is Syon Park at 83 hectares. This is followed by Gunnersbury Park at 70 hectares. Both are located in the Isleworth and Brentford Area. Other significant providers are Hanworth Park in the West Area (at 53 hectares), Chiswick House and Gardens in the Chiswick Area (at 25 hectares) and Feltham Park, Glebelands, Blenheim Park, Feltham Arenas in the West Area (at 24 hectares).

Both the sites of Syon Park and Chiswick House and Gardens are identified as being managed by non-council providers. Both have restricted access times with Syon Park also having an entry fee. For these reasons they are not included within the setting of provision standards later in the document.

Fields In Trust (FIT) suggests 0.80 hectares per 1,000 population as a guideline quantity standard. Overall, Hounslow has a current provision level of 1.24 hectares per 1,000 population which sufficiently meets the FIT suggested standard. Both the North Central and South Central analysis areas are observed as being below the FIT standard.

Country parks can also be considered to offer a dual role. Sites predominantly provide opportunities linked with natural greenspace but may also offer many features associated with parks provision. However, to ensure no double counting of sites they are classified as part of this study within the natural and semi-natural greenspace typology. However, it is important for their contribution to parks and gardens to be recognised. Bedfont Lakes is identified as the only country park in the Borough.

LONDON BOROUGH OF HOUNSLOW OPEN SPACE STUDY

If the sites of Syon Park and Chiswick House and Gardens are omitted; the current levels of provision would decrease. The most noticeable decreases are to the Chiswick Area and Isleworth and Brentford Area. Overall, the provision levels for parks and gardens across Hounslow would still exceed the FIT suggested standard.

This highlights the importance of the Chiswick House and Gardens site to the Chiswick Area particularly in terms of quantity.

Table 4.2: Parks overview (excluding restricted parks)

Analysis area	Parks and gardens (with exclusion/inclusions)		
	Number	Size (ha)	Current provision (ha per 1,000 population)
Chiswick Area	2	3.41	0.10
Isleworth and Brentford Area	10	105.99	1.90
North Central	2	20.84	0.40
South Central	4	15.69	0.27
West Area	4	82.10	1.21
London Borough of Hounslow	21	228.03	0.85

Inclusion of the Bedfont Lakes Country Park would noticeably increase the current provision level in the West Area from 1.21 hectares to 2.47 hectares per 1,000 population.

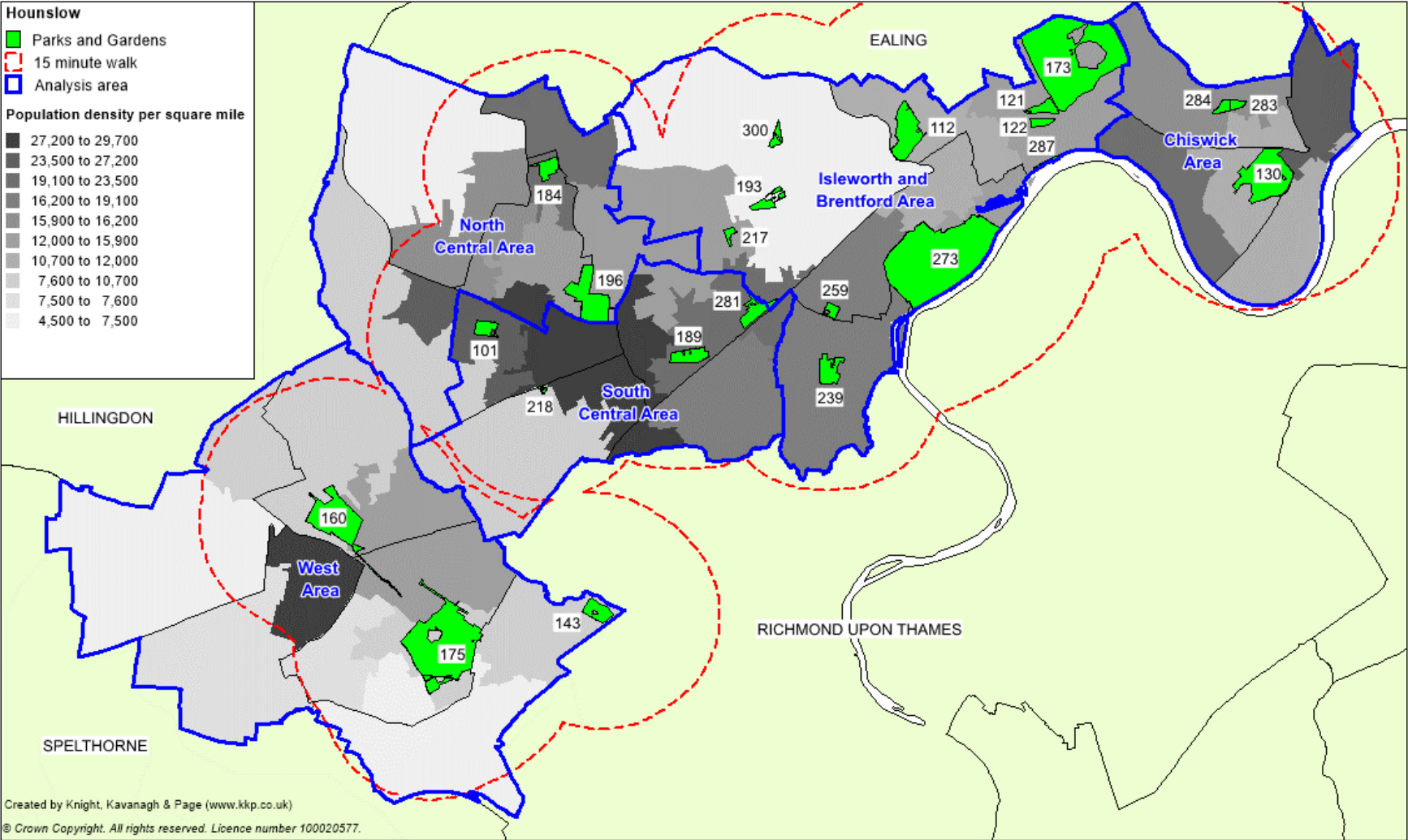
4.3 Accessibility

The community survey found the most common mode of travel to access a park is by walking. Over three quarters of respondents (83%) state they access a park by walking. This is followed by 7% of respondents that identify accessing park provision via private car. A further 5% access via cycling.

The most common times willing to be travelled by survey respondents is up to 15 minutes (30%). This is closely followed by those willing to travel up to 10 minutes (29%). On this basis, a 15-minute walk (equivalent to 1,200m) has been applied to all parks to reflect the most popular walk time. This is shown in Figure 4.1.

LONDON BOROUGH OF HOUNSLOW OPEN SPACE STUDY

Figure 4.1: Parks and gardens mapped against 15-minute walk time catchment



LONDON BOROUGH OF HOUNSLOW OPEN SPACE STUDY

Table 4.3: Key to sites mapped

Site ID	Site name	Quality score	Value score
101	Beaversfield Park	72.6%	52.4%
112	Boston Manor Park	85.0%	61.9%
121	Carville Hall Park North	65.8%	47.6%
122	Carville Hall Park South	65.8%	42.9%
130	Chiswick House and Gardens	84.5%	66.7%
143	Crane Park	64.3%	45.7%
160	Feltham parks Glebelands, Blenheim Park, Feltham Arenas	57.0%	41.0%
173	Gunnersbury Park NW entrance	77.5%	61.9%
175	Hanworth Park	75.2%	42.9%
184	Heston Park	60.9%	57.1%
189	Inwood Park	65.8%	38.1%
193	Jersey Gardens	62.9%	41.0%
196	Lampton Park	70.7%	57.1%
217	Marbaix Gardens	57.0%	36.2%
218	Midsummer Park	63.8%	38.1%
239	Redlees Park	68.1%	38.1%
259	St John's Gardens	64.8%	47.6%
273	Syon Park	71.7%	57.1%
281	Thornbury Park	59.9%	47.6%
283	Turnham Green east	66.3%	47.6%
284	Turnham Green west	55.5%	31.4%
287	Watermans Park	50.2%	36.2%
300	Wyke Green	52.9%	29.5%

Catchment mapping shows that areas of a higher population density are covered by the walk time catchment area of a park (based on the responses of the community survey).

Figure 8.1 shows the distribution of allotment sites across the area against the 15-minute walk time catchment. No significant gaps in provision are observed. However, minor gaps in provision to more densely populated areas are noted to the north-east of the Chiswick Analysis Area and the central West Analysis Area.

LONDON BOROUGH OF HOUNSLOW

OPEN SPACE STUDY

4.4 Quality

To determine whether sites are high or low quality (as recommended by best practice); scores from site assessments are colour-coded against a baseline threshold (high being green and low being red). The table overleaf summarises the results of the quality assessment for parks. A threshold of 60% is applied in order to identify high and low quality. Further explanation of how the quality scores and thresholds are derived can be found in Part 2 (Methodology).

Table 4.4: Quality ratings for parks and gardens

Analysis area	Scores (%)			Spread	No. of sites	
	Lowest score	Average score	Highest score		Low <60%	High ≥60%
Chiswick Area	56%	67%	81%	25%	1	2
Isleworth and Brentford Area	50%	66%	85%	35%	3	8
North Central Area	61%	66%	71%	10%	0	2
South Central Area	60%	66%	73%	13%	0	4
West Area	57%	66%	75%	18%	1	2
London Borough of Hounslow	50%	66%	85%	35%	5	18

Over three quarters of parks provision (78%) rates above the quality threshold. There are only five sites to rate below the quality threshold. It is worth acknowledging that most of the sites only just score below the quality threshold of 60%.

The five sites to rate below the quality threshold are:

- ✦ Feltham Parks, Glebelands, Blenheim Park, Feltham Arenas (57%)
- ✦ Marbaix Gardens (57%)
- ✦ Turnham Green West (56%)
- ✦ Watermans Park (55%)
- ✦ Wyke Green (53%)

The sites should not necessarily be considered as poor quality as scoring is a relative concept. The ratings therefore tell us that these four sites, in comparison to other park sites, are not considered as being of a similar level of quality. However, it is noted that Turnham Green west has some damaged boundary fencing whilst Wyke Green has a lack of benches. Each score well for paths, bins and drainage.

There are 18 sites to rate above the threshold. The highest scoring sites are:

- ✦ Boston Manor Park (85%)
- ✦ Chiswick House Gardens (81%)
- ✦ Gunnersbury Park NW entrance (76%)
- ✦ Hanworth Park (75%)

The sites are identified as containing a range of ancillary features and facilities including play equipment, sporting opportunities (i.e. football, cricket and other facilities such as toilets and a café).

Boston Manor Park has an active Friends Groups providing additional benefits to the quality and use of the site. Furthermore, the quality of the site is reflective of its achievement of being

LONDON BOROUGH OF HOUNSLOW

OPEN SPACE STUDY

a Green Flag Award winning site. In general, the overall appearance and maintenance at the sites is observed as excellent. Gunnersbury Park has a pavilion and museum, adding to the quality of the site.

Other high scoring sites include Beaversfield Park (73%), Syon Park (72%) and Lampton Park (71%). Again, these sites are noted as offering a number of uses to a wide range of people due to the facilities located on site. For example, Beaversfield Park (a Green Flag Award site) contains fitness equipment, a play area, tennis courts, a MUGA, a grass maze as well as a conservation area. Syon Park has extensive historic qualities including an arboretum, house and visitor centre.

Green Flag

The Green Flag Award scheme is licensed and managed by Keep Britain Tidy. It provides national standards for parks and greenspaces across England and Wales. Public service agreements, identified by the Department for Communities and Local Government (DCLG) highlight the importance placed on Green Flag status as an indicator of high quality. This in turn impacts upon the way parks and gardens are managed and maintained.

A survey by improvement charity GreenSpace highlights that parks with a Green Flag Award provide more satisfaction to members of the public compared to those without it. Its survey of 16,000 park users found that more than 90% of Green Flag Award park visitors were very satisfied or satisfied with their chosen site, compared to 65% of visitors to non-Green Flag parks.

There are 11 sites in Hounslow identified as achieving Green Flag Award status (2017/18). Half (five) of these are identified as park sites. The Green Flag Award sites are:

- ◀ Beaversfield Park
- ◀ Boston Manor Park
- ◀ Inwood Park
- ◀ Lampton Park
- ◀ St John's Gardens
- ◀ Turnham Green East

Other non-park Green Flag Award sites are:

- ◀ Bedfont Lakes Country Park
- ◀ Church Road Allotments
- ◀ Dukes Meadows Recreation Ground
- ◀ St Dunstons Park
- ◀ West of Crane Park

To be successfully awarded a Green Flag, sites must be considered to be maintained and managed to a high standard. The work of both the Council maintenance team/contractors and the Friends of Groups located at sites are important to their continuing achievement of a Green Flag Award.

LONDON BOROUGH OF HOUNSLOW

OPEN SPACE STUDY

4.5 Value

To determine whether sites are high or low value (as recommended by the Companion Guidance); the scores from the site assessments have been colour-coded against a baseline threshold (high being green and low being red). The table below summarises the results of the value assessment for parks. A threshold of 20% is applied in order to identify high and low value. Further explanation of how the value scores are derived can be found in Part 2 (Methodology).

Table 4.5: Value scores for parks and gardens

Analysis area	Scores (%)			Spread	No. of sites	
	Lowest score	Average score	Highest score		Low <20%	High ≥20%
Chiswick Area	31%	49%	67%	35%	0	3
Isleworth and Brentford Area	30%	45%	62%	32%	0	11
North Central Area	57%	57%	57%	0%	0	2
South Central Area	38%	44%	52%	14%	0	4
West Area	41%	43%	46%	5%	0	3
London Borough of Hounslow	30%	46%	67%	37%	0	23

All 23 sites score above the threshold for value. This is likely in part to reflect the high quality of sites but also their role in facilitating a range of educational, social and well-being benefits.

The six highest scoring sites for value are:

- ↳ Chiswick House and Gardens (67%)
- ↳ Boston Manor Park (62%)
- ↳ Gunnersbury Park (62%)
- ↳ Heston Park (57%)
- ↳ Lampton Park (57%)
- ↳ Syon Park (57%)

Two of these sites (Boston Manor Park and Lampton Park) are both Green Flag Award sites. Boston Manor Park has won 12 consecutive Green Flag Awards. It also has a Friends Group. The walled garden, pavilion, play area and permanent orienteering course adds further social, health and amenity benefits to the site.

All parks provide opportunities for a range of users and demonstrate the high social inclusion, health benefits and sense of place that parks can offer. One of the key aspects of the value placed on parks provision is their ability to function as a multipurpose form of open space provision.

Parks provide opportunities for local communities and individuals to socialise and undertake a range of different activities, such as exercise, dog walking and taking children to the play area. Furthermore, parks can have ecological value, providing habitats for a variety of wildlife. Taking all this into account, parks and gardens are recognised as being heavily integrated into people's everyday lives.

4.6 Summary

Parks and gardens

- ◀ There are 23 sites classified as parks and gardens totalling over 335 hectares. This is an equivalent to 1.24 hectares per 1,000 population.
- ◀ The scenario of including Bedfont Lakes Country Park and excluding parks provision with restricted access (Syon Park and Chiswick House and Gardens) highlights a noticeable drop in parks provision to the Chiswick Area. This demonstrates the important role Chiswick House and Gardens provides to the Chiswick Area.
- ◀ Hounslow as a whole meets the FIT suggested standard of 0.80 ha per 1,000 population. However, the North Central (0.40) and South Central (0.27) analysis areas are below this level.
- ◀ Catchment mapping shows that areas of higher population density are covered by the walk time catchment applied.
- ◀ Nearly all park and gardens rate above the threshold for quality. Only five sites rate below the threshold. However, no specific issues are highlighted with scoring being reflective of the comparison between other park sites.
- ◀ The quality at a number of sites is noted as being particularly good. This is reflected in six park sites achieving Green Flag Award status.
- ◀ All assessed sites score highly for value, with the important social interaction, health benefits, ecological value and sense of place sites offer being recognised.

LONDON BOROUGH OF HOUNSLOW

OPEN SPACE STUDY

PART 5: NATURAL AND SEMI-NATURAL GREENSPACE

5.1 Introduction

The natural and semi-natural greenspace typology can include woodland and scrub, grassland, heath or moor, wetlands, wastelands, and bare rock habitats and commons. Such sites are often associated with providing wildlife conservation, biodiversity and environmental education and awareness.

5.2 Current provision

In total, 23 sites are identified as natural and semi-natural greenspace, totalling over 597 hectares of provision. A minimum site size threshold of 0.2 hectares has been applied. Sites smaller than this are assumed to be of less or only limited recreational value to residents. However, they may still make a wider contribution to local areas, in relation to quality of life and health and wellbeing.

Sites with no public access such as Isleworth Ait and Chiswick Eyot are not included within the audit of this study. Their contribution in terms of biodiversity and wildlife is however recognised.

Table 5.1: Natural and semi-natural greenspace overview

Analysis area	Natural and semi-natural		
	Number	Size (ha)	Current provision (ha per 1,000 population)
Chiswick Area	2	2.52	0.07
Isleworth and Brentford Area	3	242.23	4.35
North Central Area	3	13.54	0.26
South Central Area	2	111.65	1.89
West Area	13	226.71	3.34
London Borough of Hounslow	23	597.95	2.22

The biggest contributor to natural and semi-natural provision is Osterley Fields at 133 hectares. Other noticeably large sites include Osterley Park (107 hectares), Bedfont Lakes Country Park (86 hectares) and Hounslow Heath (83 hectares).

Fields In Trust (FIT) suggests 1.80 hectares per 1,000 population as a guideline quantity standard for natural and semi-natural provision. Overall, Hounslow has a current provision level of 2.17 hectares per 1,000 population.

It is important to recognise that other forms of open space such as parks and amenity greenspace may also provide opportunities and activities associated with natural and semi-natural greenspace. For example, large parks like Hanworth Park and Syon Park contain features and benefits associated with ecology and wildlife.

LONDON BOROUGH OF HOUNSLOW OPEN SPACE STUDY

All forms of accessible natural provision have initially been included. However, for some sites the level of access for recreational purposes is limited or restricted; with natural sites often having a conservational focus. Sites initially included within the audit but identified as having restricted access include Osterley Park and Kempton Waterworks. The former is a National Trust site and the latter is a decommissioned Thames Water reservoir. Both sites require membership in order to be accessed. Table 5.2 shows the current provision levels if such sites are omitted.

Table 5.2: Natural and semi-natural greenspace (excluding restricted sites)

Analysis area	Natural and semi-natural (excluding restricted sites)		
	Number	Size (ha)	Current provision (ha per 1,000 population)
Chiswick Area	2	2.52	0.07
Isleworth and Brentford Area	2	135.20	2.43
North Central Area	3	13.54	0.26
South Central Area	2	111.65	1.89
West Area	12	205.41	3.02
London Borough of Hounslow	21	469.63	1.74

A reduction in current provision levels are noted to the Isleworth and Brentford Area as well as the West Area. However, both still meet the FIT standard of 1.80 hectares per 1,000 population. The omission of the sites does reduce the overall current provision for Hounslow from 2.22 hectares per 1,000 population to 1.74 hectares per 1,000 population. It is likely that natural and semi-natural features found at other forms of open space provision will help to ensure the FIT suggested standard is met.

Designations

There are 10 Local Nature Reserves identified within the Biodiversity Action Plan for Hounslow. Many of these are also included within the open space audit. A summary of the 10 sites is set out below:

Table 5.3: Local Nature Reserves in Hounslow

LNR site	Comment
Hounslow Heath	Included within open space audit
Isleworth Ait	Not included within open space audit. Both recognised as forming part of the River Thames Islands and importance
Chiswick Eyot	
Crane Bank Water Meadows	Included within open space audit. Recognised as forming part of the Crane Corridor
Pevensey Road	
Crane Island	
Bedfont Lakes	Included within open space audit
Kempton Waterworks	Included within open space audit but restricted access. Also recognised as a site of international importance (RAMSAR)
Dukes Hollow	Included within open space audit
Gunnersbury Triangle	Included within open space audit

LONDON BOROUGH OF HOUNSLOW OPEN SPACE STUDY

Other sites of Metropolitan Importance within Hounslow include the Grand Union Canal, Feltham Marshalling Yards and Syon Park Tide Meadow. The latter is also identified as a Site of Special Scientific Interest (SSSI).

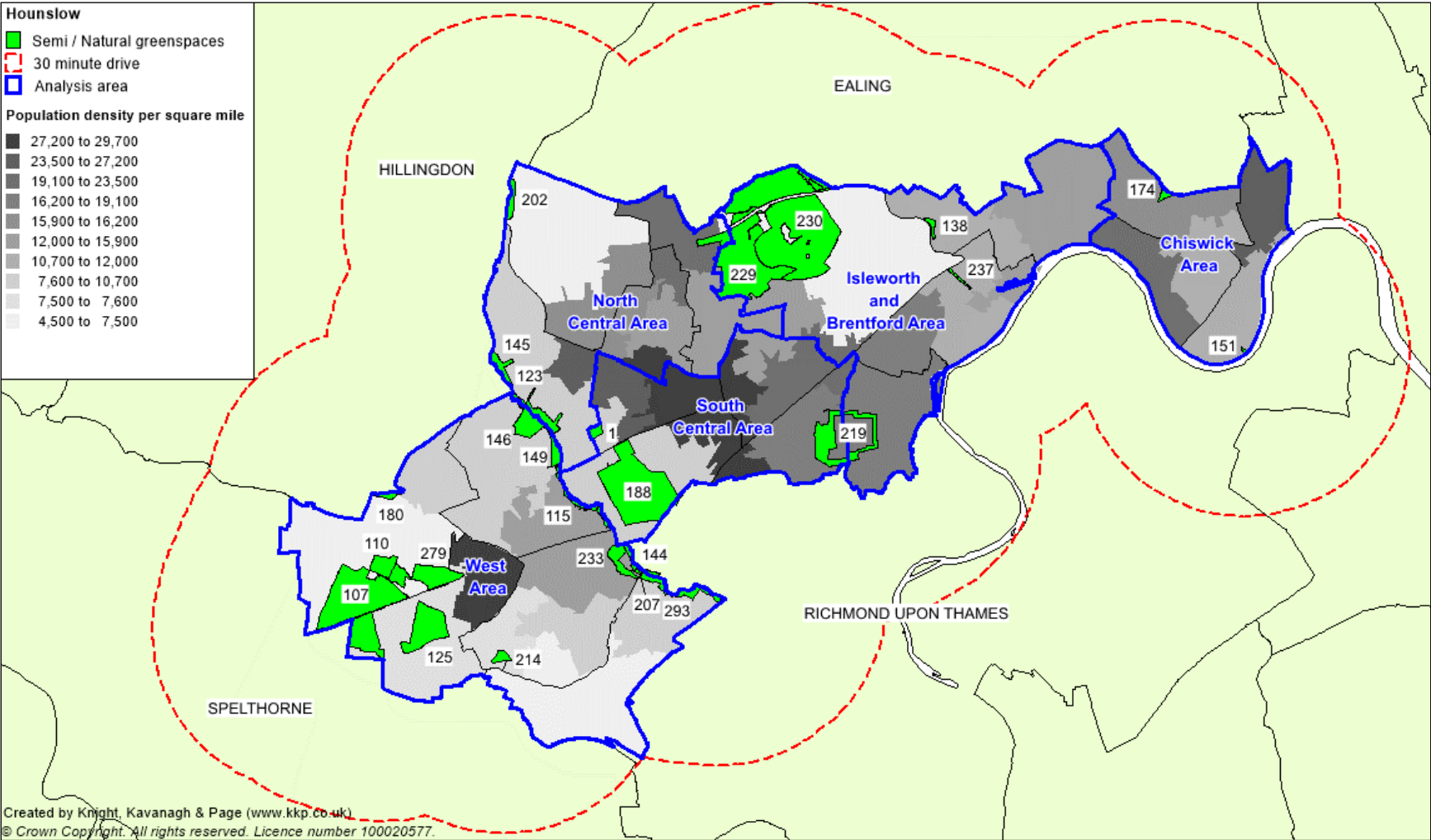
5.3 Accessibility

The community survey found the most common mode of travel to access a nature reserve, common or woodland is by walking (40%). This is followed by private car (35%), public transport (13%) and cycling (11%). Over half of respondents identify they access a country park by private car (55%).

The most common times willing to be travelled by survey respondents is up to 30 minutes (33%). This is closely followed by those willing to travel up to 15 minutes (25%). On this basis, a 30-minute walk (equivalent to 1,200m) has been applied to all sites to reflect the most popular walk time. This is shown in Figure 5.1.

LONDON BOROUGH OF HOUNSLOW OPEN SPACE STUDY

Figure 5.1: Natural and semi-natural greenspace mapped against 30-minute walk time



LONDON BOROUGH OF HOUNSLOW

OPEN SPACE STUDY

Table 5.4: Key to sites mapped

Site ID	Site name	Quality score	Value score
107	Bedfont Lakes Country Park	70.8%	75.0%
110	Bedfont Road	27.4%	44.0%
115	Brazil Mill Woods	47.3%	38.0%
123	Causeway - Water Meadows	39.8%	43.0%
125	Chertsey Road NSN, Lower Feltham	53.1%	39.0%
138	Clitherows Island	38.1%	28.0%
144	Crane Park South (River Crane Land)	56.6%	49.0%
145	Crane Valley Park Cranebank	40.7%	38.0%
146	Cranebank Water Meadows LNR	56.6%	29.0%
149	Donkey Woods and Brazil Mill	71.2%	39.0%
151	Duke's Hollow Nature Reserve	50.0%	29.0%
174	Gunnersbury Triangle Local Nature Reserve	66.8%	39.0%
180	Hatton Meadows SINC	48.7%	44.0%
188	Hounslow Heath	54.0%	44.0%
202	Land at Cranford Park - the Parkway, Southall	51.3%	39.0%
207	Land to S.W. of Crematorium-Grazing	48.7%	38.0%
214	Ludlow Nature Reserve	32.7%	38.0%
219	Mogden Sewage Works	54.0%	29.0%
229	Osterley Fields	52.7%	29.0%
230	Osterley Park		
279	The Pitts	40.7%	44.0%
293	West of Crane Park	72.1%	49.0%
304	Kempton Waterworks		

Figure 5.1 shows no gaps in natural and semi-natural greenspace is observed if the 30-minute walk time catchment (based on the responses to the community survey) is applied.

Neither Osterley Park or Kempton Waterworks receive a quality and value score as part of the audit. This is due to the restrictions in terms of access as both require membership fees. However, both are assumed to be of high quality and value given their respective biodiversity and historical importance.

LONDON BOROUGH OF HOUNSLOW

OPEN SPACE STUDY

5.4 Quality

To determine whether sites are high or low quality (as recommended by the Companion Guidance) scores from the site assessments are colour-coded against a baseline threshold (high being green and low being red). The table below summarises the results of the quality assessment for natural and semi-natural greenspace. A threshold of 45% is applied in order to identify high and low quality. Further explanation of how the quality scores are derived can be found in Part 2 (Methodology).

Table 5.5: Quality ratings for natural and semi-natural greenspace

Analysis area	Scores (%)			Spread	No. of sites	
	Lowest score	Average score	Highest score		Low <45%	High ≥45%
Chiswick Area	50%	58%	67%	17%	0	2
Isleworth and Brentford Area	38%	45%	53%	15%	1	1
North Central Area	40%	44%	51%	12%	2	1
South Central Area	54%	54%	54%	0%	0	2
West Area	27%	53%	76%	49%	3	9
London Borough of Hounslow	27%	51%	76%	53%	6	15

Natural and semi-natural greenspace has a lower quality threshold than some other open space typologies such as parks. This is in order to reflect the wide-ranging characteristics of provision. For instance, some natural and semi-natural sites are intentionally without ancillary facilities as they focus on wildlife habitats whilst others are more focused on recreational use.

Of the natural and semi-natural provision assessed, a total of 15 sites (71%) rate above the threshold set for quality. There are six sites which rate below the quality threshold applied. The lowest scoring sites are:

- ◀ Bedford Road (27%)
- ◀ Ludlow Nature Reserve (32%)
- ◀ Clitherows Island (38%)

Sites scoring below the threshold for quality tend to lack basic ancillary features such as seating, bins etc in comparison to other similar nature sites. As previously mentioned, this can be due to their primary role as forms of habitat provision. However, they also often score below the threshold due to narrow entrances and lack of quality pathways which impact on their access and usage.

Most sites scoring above the threshold are observed as being more attractive due to the perceived higher levels of maintenance and cleanliness as well as the recreational uses on offer.

The highest scoring sites are:

- ◀ West of Crane Park (76%)
- ◀ Donkey Woods and Brazil Mill (75%)
- ◀ Bedford Lakes Country Park (71%)

LONDON BOROUGH OF HOUNSLOW OPEN SPACE STUDY

These sites are observed as having better maintained pathways, appropriate boundary fencing as well as good signage. All of the above sites score well for overall maintenance and cleanliness, drainage and pathways.

Osterley Park is the highest scoring site. It is noted as containing seating, bins, toilets and a car park (not free). It scores excellent for overall maintenance and cleanliness.

Both the West of Crane Park and Bedfont Lakes Country Park have Green Flag Award Status. This is a further indication to their high quality and management.

5.5 Value

To determine whether sites are high or low value (as recommended by the Companion Guidance) scores from site assessments have been colour-coded against a baseline threshold (high being green and low being red). The table below summarises the results of the value assessment for natural and semi-natural greenspace. A threshold of 20% is applied in order to identify high and low value. Further explanation of how the value scores are derived can be found in Part 2 (Methodology).

Table 5.6: Value scores for natural and semi-natural greenspace

Analysis area	Scores (%)			Spread	No. of sites	
	Lowest score	Average score	Highest score		Low <20%	High ≥20%
Chiswick Area	28%	32%	37%	9%	0	2
Isleworth and Brentford Area	27%	28%	28%	1%	0	2
North Central Area	36%	38%	41%	5%	0	3
South Central Area	28%	39%	51%	23%	0	2
West Area	28%	43%	76%	48%	0	12
London Borough of Hounslow	27%	39%	76%	49%	0	21

All of the assessed natural and semi-natural greenspace sites rate above the value threshold. The sites to rate the highest for value are:

- ↳ Bedfont Lakes Country Park (76%)
- ↳ Crane Park South (River Crane Island) (51%)
- ↳ West of Crane Park (51%)
- ↳ Hounslow Heath (51%)

Bedfont Lakes Country Parks has the highest value score. The site offers a wide range of habitats including lakes, grasslands and woodland, a nature reserve, a fishing lake and measured jogging trails and opportunities for outdoor exercise. There is a visitor and educational centre plus two play areas. Together these enhance the sites social, biodiversity and recreational value.

LONDON BOROUGH OF HOUNSLOW

OPEN SPACE STUDY

The West of Crane Park (51%) contains semi-deciduous woodland, mixed grasslands, reed beds and wetland areas. It forms part of the Metropolitan important Crane Valley Corridor. Consequently, it has high ecological and educational value with interpretation boards and an education centre in the Shot Tower. The site has a rich history linking to the Hounslow Gunpowder Mills. Furthermore, the trails and footpaths throughout the site and which connect to other areas provide health and exercise benefits. The London Wildlife Trust manages Crane Park Island. FORCE (Friends of the River Crane Environment) is an active group protecting open spaces and the environment in and around the River Crane.

Sites rating above the value threshold often demonstrate the added benefit natural and semi-natural greenspaces can provide especially in terms of contributing to flora and fauna promotion and habitat opportunities. There are 10 LNR designated sites in place. This demonstrates the role and importance such sites provide especially in terms of biodiversity. Sites are also recognised for their recreational benefits. For some natural sites, a delicate balance of habitat promotion and opportunities for recreational and socialising is achieved. Consequently, these sites often rate highly for quality and value.

5.6 Summary

Natural and semi-natural greenspace summary

- ◀ There are 21 accessible natural greenspace sites covering over 469 hectares.
- ◀ Two prominent sites contributing to natural provision are Osterley Park and Kempton Waterworks. Both require membership in order to be accessed.
- ◀ FIT suggests a standard of 1.80 ha per 1,000 population. There are 1.74 hectares per 1,000 population across Hounslow. If the two restricted sites are included a current provision level of 2.22 hectares per 1,000 population is noted.
- ◀ There is a good distribution of natural and semi-natural sites across the area. The 30-minute walk time catchment sufficiently covers the whole of the borough.
- ◀ 10 LNRs exist in Hounslow. One is Kempton Waterworks which also has an international RAMSAR designation). Two are inaccessible islands; Isleworth Ait and Chiswick Eyot.
- ◀ Of the natural and semi-natural sites assessed, over two thirds (71%) rate above the threshold set for quality. There are six sites to rate below the threshold; no specific issues are noted.
- ◀ All sites rate above the threshold for value which demonstrates the added benefit natural and semi-natural greenspaces can provide especially in terms of contributing to flora and fauna. There are also a number of sites which provide a good balance of offering recreational opportunities; such sites tend to rate highly for value.

LONDON BOROUGH OF HOUNSLOW OPEN SPACE STUDY

PART 6: AMENITY GREENSPACE

6.1 Introduction

This is defined as sites offering opportunities for informal activities close to home or work or enhancement of the appearance of residential or other areas. It includes informal recreation spaces, housing green spaces, village greens and other incidental space.

6.2 Current provision

There are 107 amenity greenspace sites in Hounslow equivalent to over 171 hectares of provision. Sites are most often found within areas of housing and function as informal recreation space or open space providing a visual amenity. A number of recreation grounds and playing fields are also classified as amenity greenspace.

Table 6.1: Amenity greenspace overview

Analysis area	Amenity greenspace		
	Number	Size (ha)	Current provision (ha per 1,000 population)
Chiswick Area	10	16.69	0.48
Isleworth and Brentford Area	16	42.53	0.76
North Central Area	25	35.70	0.68
South Central Area	11	6.11	0.10
West Area	45	70.36	1.04
London Borough of Hounslow	107	171.38	0.64

A large proportion of provision may be considered as being smaller grassed areas or roadside verges. However, there is some variation of sites within this typology. For example, the smallest site is The Alders at 0.14 hectares whilst the largest site is Boston Manor Playing Field at over 26 hectares. Larger recreation grounds and playing fields serve a different purpose to smaller grassed areas and verges; often providing an extended range of opportunities for recreational and sporting activities due to their size.

It is important to recognise the role of the Playing Pitch Strategy (PPS) with regard to such sites. Some playing fields and recreation grounds included within the Open Space Study will also be included within a PPS. These sites are covered by the Open Space Study to reflect the multi-functional role of such forms of provision.

Fields In Trust (FIT) suggests 0.60 hectares per 1,000 population as a guideline quantity standard. Overall, Hounslow has a current provision level of 0.64 hectares per 1,000 population which falls above the FIT suggested standard.

The South Central Area (0.10 hectares per 1,000 population) has a noticeably lower current provision level in comparison to other areas of the Borough and Hounslow as a whole.

The Isleworth and Brentford Area (0.76 hectares per 1,000 population) and the West Area (1.04 hectares per 1,000 population) are both observed as being much greater than the FIT and Hounslow figures.

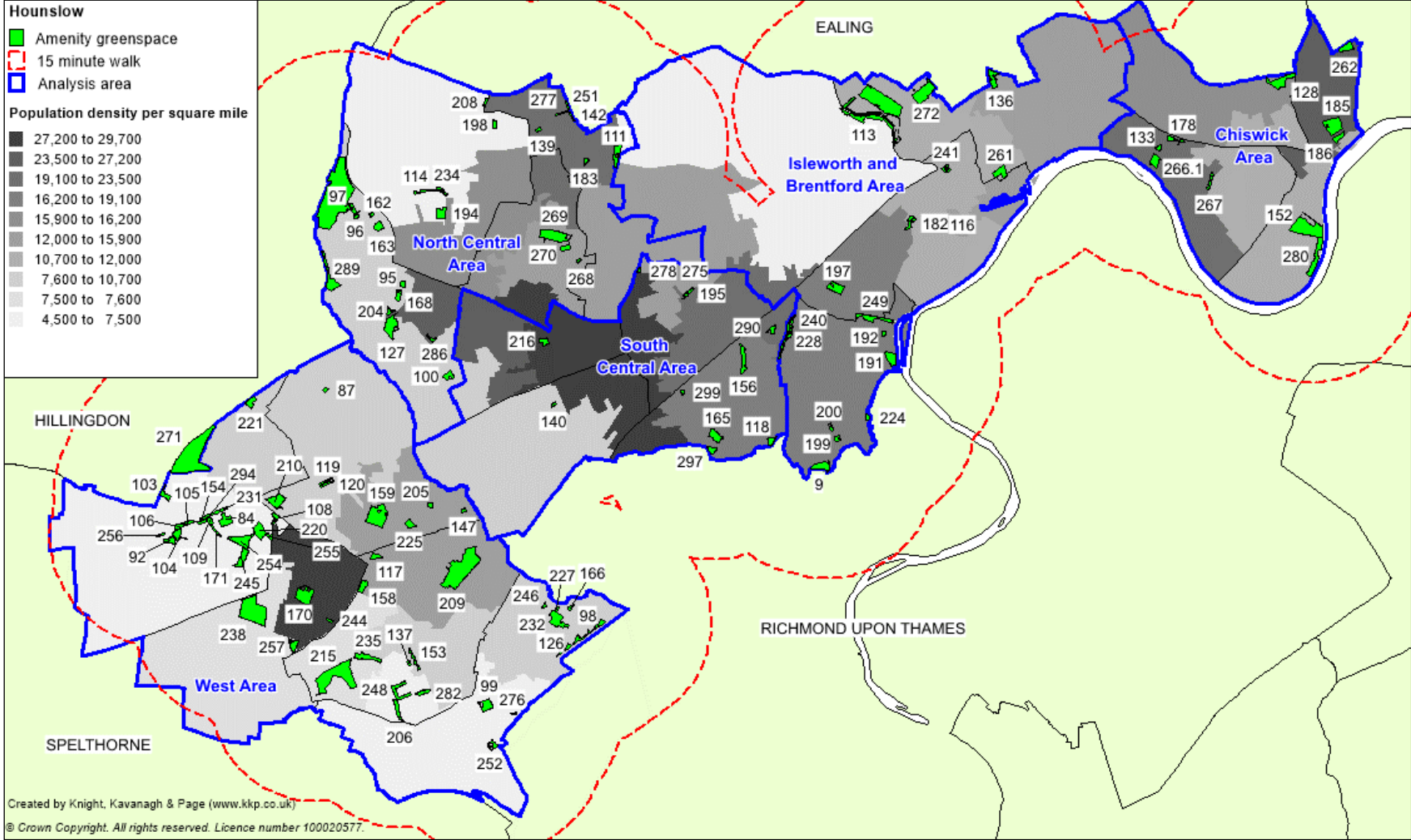
6.3 Accessibility

The community survey found the most common mode of travel to access an amenity greenspace is by walking. Three quarters of respondents (75%) state they access amenity provision by walking. This is followed by 10% of respondents that identify accessing amenity greenspace via private car; 7% access via cycling and another 7% access via public transport.

The most common times willing to be travelled by survey respondents is up to 15 minutes (29%). This is closely followed by those willing to travel up to 10 minutes (26%). On this basis, a 15-minute walk (equivalent to 1,200m) has been applied to all amenity greenspace to reflect the most popular walk time. This is shown in Figure 6.1.

LONDON BOROUGH OF HOUNSLOW OPEN SPACE STUDY

Figure 6.1: Amenity greenspace mapped against 15-minute catchment



LONDON BOROUGH OF HOUNSLOW OPEN SPACE STUDY

Table 6.2: Key to sites mapped

Site ID	Site name	Quality score	Value score
95	Aston Green	58.5%	28.4%
96	Avenue Gardens	72.6%	29.5%
97	Avenue Park	85.2%	52.6%
98	Beach Grove	61.9%	34.7%
99	Bear Road Recreation Ground / Winslow Memorial Ground	75.8%	47.4%
100	Beavers Lane Camp	66.4%	35.8%
103	Bedfont Close Open Space	63.2%	35.8%
104	Bedfont Green Close	63.2%	36.8%
105	Bedfont Green east	63.2%	34.7%
106	Bedfont Green west	60.8%	34.7%
108	Bedfont Lane Open Space	75.1%	35.8%
109	Bedfont Library	59.2%	34.7%
111	Biscoe Close Open Close	67.0%	40.0%
113	Boston Manor Playing Field	79.8%	35.8%
114	Brabazon Road Open Space	63.7%	34.7%
116	Brent Lea Recreation Ground	79.8%	30.5%
117	Bridge House Pond	73.5%	34.7%
118	Bulls Field	54.5%	25.3%
119	Burns Ave north	59.2%	24.2%
120	Burns Ave south	67.3%	24.2%
126	Chertsey Road Open Space	65.5%	30.5%
127	Chester Road Open Space	65.5%	42.1%
128	Chiswick Common	67.7%	36.8%
133	Chiswick Village Amenity Space	76.2%	29.5%
136	Clayponds Recreation Ground	86.5%	47.4%
137	Clifton Ave amenity space	62.6%	29.5%
139	Clunbury Avenue	67.9%	29.5%
140	Cobbs Road amenity space	59.9%	34.7%
142	Crameswater Park	59.9%	29.5%
147	Cygnets Avenue	68.6%	23.2%
152	Dukes Meadows Recreation Ground	75.8%	36.8%
153	east of estate near Clifton Ave	59.2%	29.5%
154	Elm Road	58.5%	34.7%
156	Farnell Road Open Space	70.9%	29.5%
158	Feltham Green	67.7%	52.6%
159	Feltham Park	85.2%	42.1%
162	Firs Drive north	65.2%	23.2%
163	Firs Drive Open Space	68.6%	29.5%

LONDON BOROUGH OF HOUNSLOW OPEN SPACE STUDY

Site ID	Site name	Quality score	Value score
165	Gainsborough Gardens	75.8%	30.5%
166	Gardner House amenity space	53.8%	40.0%
168	Grantley Road	61.9%	41.1%
170	Grosvenor Park	66.4%	47.4%
171	Grovestile Way	59.4%	33.7%
178	Harvard Hill Recreation Ground	69.1%	35.8%
182	Hawthorn Road Park	70.0%	42.1%
183	Heston Green	59.2%	29.5%
185	Homefields Recreation Ground North	85.2%	47.4%
186	Homefields Recreation Ground South	85.2%	30.5%
191	Isleworth House Open Space	62.1%	46.3%
192	Isleworth Village Green	63.7%	34.7%
194	Johnson Road	68.2%	35.8%
195	Kingsley Avenue Park	56.9%	35.8%
197	Lanadron Close Open Space	66.4%	30.5%
198	Land adjacent to Ringway	64.6%	35.8%
199	Land adjacent to The Bridgelink Centre	62.8%	34.7%
200	Land at corner of Mogden Lane and Summerwood Rd	74.9%	35.8%
204	Land at NE cnr of Great SW Rd and The Parkway	52.5%	33.7%
205	Land north of Sparrow Farm Junior School	68.6%	29.5%
208	Land west of North Hyde Lane	57.8%	34.7%
209	Leitrim Park	69.5%	35.8%
210	Letchworth Ave	70.9%	41.1%
215	Ludlow Road Open Space	77.6%	30.5%
216	Maitland Close	59.2%	29.5%
220	Monarch Close Open Space	70.9%	34.7%
221	Myrtle Avenue	67.3%	30.5%
224	Northcote Avenue	47.1%	30.5%
225	Off Barinton Avenue	61.9%	29.5%
227	Off Saxon Avenue	51.8%	33.7%
228	Off Warton Road	59.2%	34.7%
231	Page Road	60.8%	34.7%
232	Park adjacent to Nene Gardens	85.2%	42.1%
233	Pevensey Road Open Space	77.6%	47.4%
234	Phoenix Place Blanchard Court	61.4%	34.7%
235	Poplar Way Public Open Space	63.2%	30.5%
238	Raleigh Park	78.9%	30.5%
240	Riverside Walk Open Space	74.9%	42.1%
241	Robin Grove AGS	64.1%	42.1%
244	Rochester Avenue Open Space	59.2%	34.7%

LONDON BOROUGH OF HOUNSLOW OPEN SPACE STUDY

Site ID	Site name	Quality score	Value score
245	Sandy Drive Open Space	68.6%	35.8%
246	Saxon Avenue	63.2%	33.7%
248	Seymour Gardens open space	56.5%	29.5%
249	Silverhall Open Space / Mill Plat Land	86.5%	68.4%
251	South of Thorncliffe Road	65.2%	28.4%
252	South Road Recreation Ground	77.1%	47.4%
254	Southville Cres open space	64.8%	34.7%
255	Southville Road Open Space	66.6%	40.0%
256	Spinney Drive	59.2%	34.7%
257	St Dunstan's Park	86.5%	47.4%
261	St Paul's Recreation Ground	86.5%	47.4%
262	Stamford Brook Common	85.2%	35.8%
266.1	Strand on the Green Recreation Ground	70.9%	30.5%
267	Sutton Court Road amenity space	61.4%	29.5%
268	Sutton Lane Open Space	58.5%	29.5%
269	Sutton Playing Field	82.5%	36.8%
270	Sutton Square Park	67.3%	28.4%
272	Swyncombe Playing Field	77.1%	31.6%
275	Tennyson Road	63.9%	23.2%
276	The Alders	58.5%	29.5%
277	The Glen	52.5%	28.4%
278	The Highlands Open Space	53.4%	29.5%
280	The Promenade	57.8%	31.6%
286	Vista centre	53.1%	27.4%
289	Way Avenue Open Space	66.4%	35.8%
290	WEFRA (Woodland Estate Residents Freeholders' Association) Park	71.7%	35.8%
294	West Road/Staines Road	57.8%	34.7%
297	Whitton Dene Open Space	62.3%	30.5%
299	Wolsey Close amenity space	69.1%	29.5%

Mapping demonstrates a good distribution of amenity greenspace provision across the area; all areas with a higher population density are being served by a catchment of an amenity greenspace.

LONDON BOROUGH OF HOUNSLOW

OPEN SPACE STUDY

6.4 Quality

To determine whether sites are high or low quality (as recommended by the Companion Guidance); the scores from site assessments have been colour-coded against a baseline threshold (high being green and low being red). The table below summarises the results of the quality assessment for amenity greenspaces. A threshold of 60% is applied in order to identify high and low quality. Further explanation of how the quality scores and thresholds are derived can be found in Part 2 (Methodology).

Table 6.3: Quality ratings for amenity greenspace

Analysis area	Scores (%)			Spread	No. of sites	
	Lowest score	Average score	Highest score		Low <60%	High ≥60%
Chiswick Area	58%	73%	85%	27%	1	9
Isleworth and Brentford Area	47%	71%	87%	39%	2	14
North Central Area	52%	64%	85%	33%	8	17
South Central Area	53%	63%	76%	22%	5	6
West Area	52%	66%	87%	35%	12	33
London Borough of Hounslow	47%	67%	87%	39%	28	79

A total of 73% of assessed amenity greenspace sites rate above the threshold for quality.

The highest scoring sites for are:

- ↳ Clayponds Recreation Ground (87%)
- ↳ Silverhall Open Space/Mill Plat Land (87%)
- ↳ St Dunstan's Park (87%)
- ↳ St Paul's Recreation Ground (87%)

The sites are observed as having high standards of maintenance and cleanliness, resulting in a good overall appearance. In addition, they provide sufficient security levels, bins, benches signage and pathways. In addition, each have play provision which add to their quality and value.

Other high scoring sites include Avenue Park, Feltham Park, Homefields Recreation Ground North and Homefields Recreation Ground South (all 85%). Excluding the latter site, these all have play provision. Avenue Park and Feltham Park both have a MUGA and play area with the latter also benefitting from a basketball area and football goals on the grass, enhancing site quality as well as recreational opportunities.

Larger amenity greenspace sites such as recreation grounds and playing fields often lend themselves to greater sporting and recreational opportunities such as football. These opportunities as well as other added features on site, such as good quality play areas, provide increased reasons for people to visit such provision. Consequently, the quality of such sites is often to a higher standard. Of the sites highlighted as a recreation ground or playing field, all 13 are rated as being above the quality threshold.

LONDON BOROUGH OF HOUNSLOW

OPEN SPACE STUDY

There are 28 amenity greenspaces that rate below the threshold. However, most of these sites rate just below the threshold of 60% for quality. Most of the sites are identified as small greenspaces with a path. They tend to lack any discernable ancillary features but are likely to offer visual benefits.

Some of the lowest scoring amenity greenspace sites are:

- ↳ Northcote Avenue (47%)
- ↳ Off Saxon Avenue (52%)
- ↳ Land at NE corner of Great South West Road and The Parkway (52%)
- ↳ The Glen (52%)

The sites mainly score lower due to a lack of ancillary features such as bins and benches. None of the sites have boundary fencing with the exception of Northcote Avenue. This is not always necessary and small amenity sites may act as a visual amenity only. Off Saxon Avenue and The Glen have no specific paths however these sites serve more as a visual amenity. Both sites rate well for overall maintenance and cleanliness.

6.5 Value

To determine whether sites are high or low value (as recommended by the Companion Guidance) site assessments scores are colour-coded against a baseline threshold (high being green and low being red). The table below summarises the results. A threshold of 20% is applied in order to identify high and low value. Further explanation of the value scoring and thresholds can be found in Part 2 (Methodology).

Table 6.4: Value ratings for amenity greenspace

Analysis area	Scores (%)			Spread	No. of sites	
	Lowest score	Average score	Highest score		Low <20%	High ≥20%
Chiswick Area	29%	34%	47%	18%	0	10
Isleworth and Brentford Area	31%	40%	68%	38%	0	16
North Central Area	23%	33%	53%	29%	0	25
South Central Area	23%	30%	36%	13%	0	11
West Area	23%	35%	53%	29%	0	44
London Borough of Hounslow	23%	35%	68%	45%	0	107

All amenity greenspaces rate above the threshold for value. The highest scoring sites are:

- ↳ Silverhall Open Space/Mill Plat Land (68%)
- ↳ Feltham Green (53%)
- ↳ Avenue Park (53%)

These sites all appear well used, providing social and health benefits with suitable ancillary facilities to enable a wider range of people to use. Avenue Park is a large site and has park features with a play area, MUGA, noticeboard and path through the site. These all add and enhance the sport and recreation opportunities at the site.

Similarly, Silverhall Open Space/Mill Plat Land is the highest scoring amenity greenspace for value. It features play equipment which further adds to its appeal and social interaction

LONDON BOROUGH OF HOUNSLOW

OPEN SPACE STUDY

benefits. The site also scores high for ecological and structural landscape benefits due to numerous trees, the intersecting river and it being an attractive amenity.

Feltham Green was a Green Flag Award site last year but not in this year's winners list. However, it does score high for quality and value featuring paths, benches and a small pond providing for a range of people and promoting some ecological vale benefits

Amenity greenspace should be recognised for its multi-purpose function, offering opportunities for a variety of leisure and recreational activities. It can often accommodate informal recreational activity such as casual play and dog walking. Many sites are likely to offer a dual function and are amenity resources for residents as well as being visually pleasing. These attributes add to the quality, accessibility and visibility of amenity greenspace. Combined with the presence of facilities (e.g. benches, landscaping and trees) this means that the better-quality sites are likely to be more respected and valued by the local community.

6.6 Summary

Amenity greenspace summary

- ◀ There are 107 amenity greenspace sites equating to over 171 hectares of provision.
- ◀ FIT suggests a standard of 0.60 hectares per 1,000 population. Overall, London Borough of Hounslow (0.64 hectares per 1,000 population) meets the FIT standard.
- ◀ Mapping demonstrates a good distribution of amenity greenspace across the area. No significant gaps in catchment mapping are identified.
- ◀ Nearly three quarters (73%) of amenity sites assessed rate above the threshold for quality. The majority of sites to score lower for quality is due to a lack of ancillary features and being small areas of greenspace with a lack of paths.
- ◀ In addition to its multifunctional role, amenity greenspace makes a valuable contribution to visual aesthetics for communities – hence 100% of sites rate above the value threshold.

PART 7: PROVISION FOR CHILDREN AND YOUNG PEOPLE

7.1 Introduction

This type of provision includes areas designated primarily for play and social interaction involving children and young people, such as equipped play areas, ball courts, skateboard areas and teenage shelters.

Provision for children is deemed to be sites consisting of formal equipped play facilities typically associated with play areas. This is usually perceived to be for children under 12 years of age. Provision for young people can also include equipped sites that provide more robust equipment catering to older age ranges. It can include facilities such as skate parks, BMX, basketball courts, youth shelters and Multi-Use Games Areas (MUGAs).

7.2 Current provision

A total of 68 sites are identified in Hounslow as provision for children and young people. This combines to create a total of more than seven hectares. No site size threshold has been applied and as such all known provision is identified and included within the audit.

Table 7.1: Provision for children and young people overview

Analysis area	Provision for children and young people		
	Number	Size (ha)	Current provision (ha per 1,000 population)
Chiswick Area	5	1.50	0.04
Isleworth and Brentford Area	24	2.09	0.04
North Central Area	13	1.91	0.04
South Central Area	9	0.66	0.01
West Area	17	1.68	0.02
London Borough of Hounslow	68	7.84	0.03

The South Central Area has a current quantity provision level which is noticeably lower in comparison to other areas of the Borough.

Fields In Trust (FIT) suggests 0.25 hectares per 1,000 population as a guideline quantity standard. Overall, Hounslow has a current provision level of 0.03 hectares per 1,000 population. However, the FIT standard also includes the land surrounding the dedicated play provision. If such land is also included in the calculation then a total of 70.61 hectares* is identified; an equivalent to 0.26 hectares per 1,000 population.

There are a number of sites providing specific provision catering for older age ranges. In total there are 22 sites recognised as offering casual forms of provision for older ages. The majority contains a MUGA. A few sites offer other forms of casual provision:

- ◆ Beach Grove - basketball area
- ◆ Feltham Park - basketball area and youth shelter
- ◆ Thornbury Park - skate park

7.3 Accessibility

* Only includes surrounding land figures from play sites located within amenity greenspace sites

LONDON BOROUGH OF HOUNSLOW OPEN SPACE STUDY

The community survey found the most common mode of travel to access a play area for children (86%) or provision catering for older ages (46%) is by walking. For provision catering for older age ranges this is followed by public transport (20%), private car (17%) and cycling (17%).

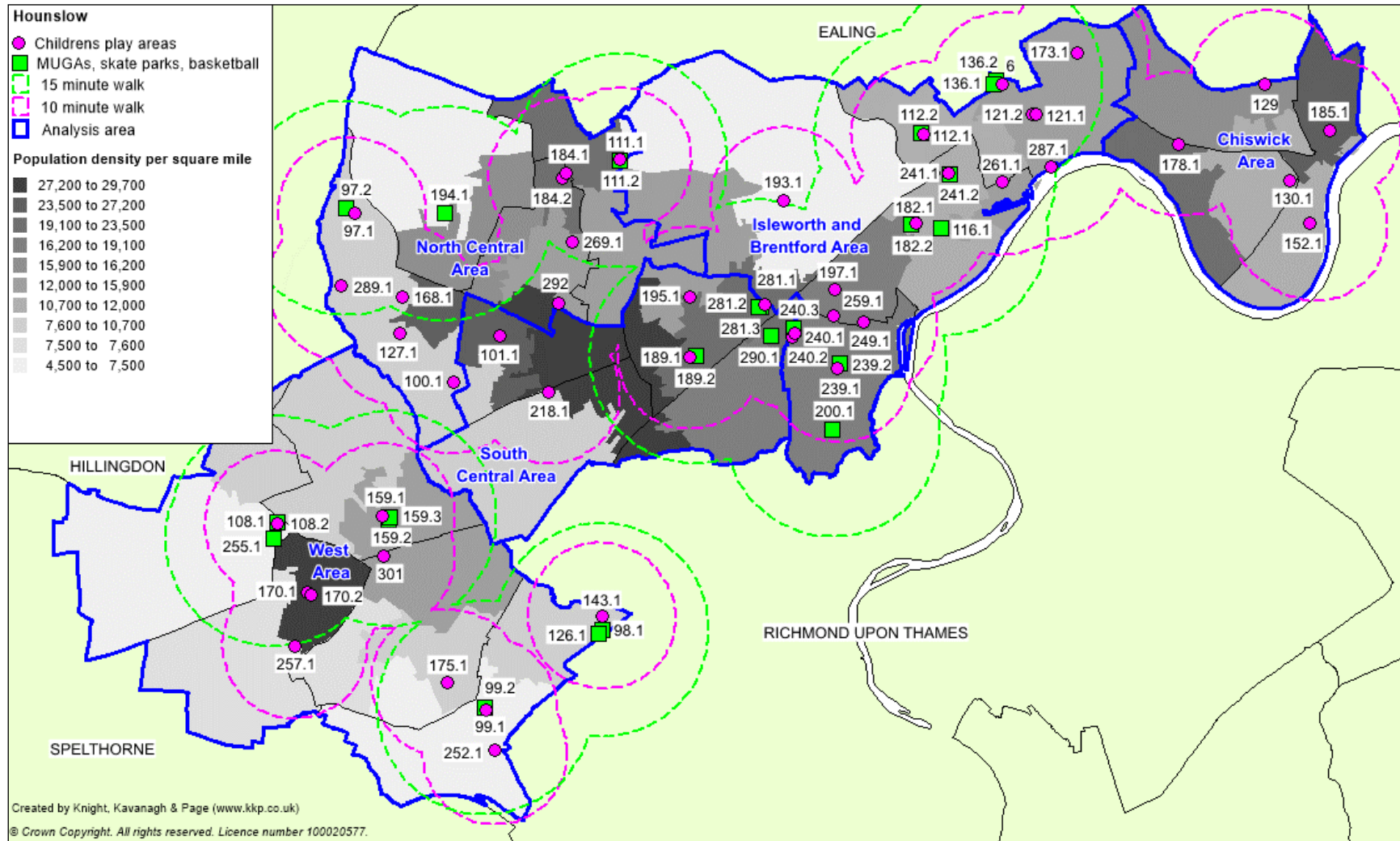
The most common times willing to be travelled by survey respondents to access children's play provision is up to 10 minutes (33%). This is closely followed by those willing to travel up to 15 minutes (27%).

For provision catering for older age ranges the most common travel time is split between those respondents willing to travel up to 10 minutes (33%) and those willing to travel up to 15 minutes (33%). A further 20% state a willingness to travel up to 30 minutes.

On this basis, a 10-minute walk time (equivalent to 800m) has been applied to children's play provision and a 15-minute walk (equivalent to 1,200m) has been applied to provision catering for older age ranges. This is shown in Figure 7.1.

LONDON BOROUGH OF HOUNSLOW OPEN SPACE STUDY

Figure 7.1: Provision for children and young people mapped against catchments



**LONDON BOROUGH OF HOUNSLOW
OPEN SPACE STUDY**

LONDON BOROUGH OF HOUNSLOW OPEN SPACE STUDY

Table 7.2: Key to sites mapped

Site ID	Site name	Quality score*	Value score
6	Clayponds Gardens play area	72.2%	38.2%
97.1	Avenue Park play areas	71.1%	45.5%
97.2	Avenue Park MUGA		
98.1	Beach Grove basketball area	29.9%	38.2%
99.1	Bear Road Recreation Ground play area	55.7%	54.5%
99.2	Bear Road Recreation Ground MUGA		
100.1	Beavers Lane Camp play area	40.2%	27.3%
101.1	Beaversfield Park play area	68.0%	54.5%
108.1	Bedfont Lane play areas	56.4%	54.5%
108.2	Bedfont Lane MUGA		
111.1	Biscoe Close play area	49.1%	41.8%
111.2	Biscoe Close MUGA		
112.1	Boston Manor Park play area	73.9%	54.5%
112.2	Boston Manor Park MUGA		
116.1	Brent Lea Recreation Ground MUGA	64.6%	41.8%
121.1	Carville Hall Park North play area 1	69.8%	45.5%
121.2	Carville Hall Park North play area 2		
126.1	Beach Grove youth shelter	56.4%	34.5%
127.1	Chester Road play area	56.7%	54.5%
129	Chiswick Common playground	63.9%	45.5%
130.1	Chiswick House and Gardens play area	67.7%	54.5%
136.1	Clayponds Recreation Ground MUGA	59.8%	41.8%
143.1	Crane Park play area	56.4%	45.5%
152.1	Dukes Meadows water & sand playground	68.0%	54.5%
159.1	Feltham Park play area	68.0%	36.4%
159.2	Feltham Park MUGA		
159.3	Feltham Park basketball/youth shelter		
168.1	Grantley Road play area	67.7%	41.8%
170.1	Grosvenor Park play area	48.1%	41.8%
170.2	Grosvenor Park kickabout		
173.1	Gunnersbury Park play areas	69.1%	54.5%
175.1	Hanworth Park play area	64.6%	45.5%
178.1	Harvard Hill Recreation Ground play area	61.9%	38.2%
182.1	Hawthorn Road Park play areas	64.9%	41.8%
182.2	Hawthorn Road Park MUGA		
184.1	Heston Park play area 1	67.0%	54.5%
184.2	Heston Park play area 2		

* Where more than one form of play provision is identified a single quality and value score is attributed.

LONDON BOROUGH OF HOUNSLOW OPEN SPACE STUDY

Site ID	Site name	Quality score	Value score
185.1	Homefields Recreation Ground play area	73.2%	45.5%
189.1	Inwood Park play area	73.2%	45.5%
189.2	Inwood Park MUGA		
193.1	Jersey Gardens	68.4%	45.5%
194.1	Johnson Road MUGA	46.4%	38.2%
195.1	Kingsley Avenue Park play area	40.2%	38.2%
197.1	Lanadron Close play area	46.4%	45.5%
200.1	Mogden Lane MUGAs	64.9%	45.5%
218.1	Midsummer Park play areas	70.1%	45.5%
239.1	Redlees Park play areas	62.9%	45.5%
239.2	Redlees Park MUGA		
240.1	Riverside Walk play area 1	67.7%	45.5%
240.2	Riverside Walk play area 2		
240.3	Riverside Walk MUGA		
241.1	Robin Grove play area	63.9%	45.5%
241.2	Robin Grove MUGA		
249.1	Silverhall Park play areas	71.8%	45.5%
252.1	South Road Recreation Ground play areas	68.0%	54.5%
255.1	Southville Road MUGA	57.7%	41.8%
257.1	St Dunstan's Park play area	73.2%	45.5%
259.1	St John's Gardens play area	75.3%	54.5%
261.1	St Paul's Recreation Ground play area	48.1%	41.8%
269.1	Sutton Playing Field play area	74.2%	45.5%
281.1	Thornbury Park play area	62.9%	54.5%
281.2	Thornbury Park skate park		
281.3	Thornbury Park MUGA		
287.1	Watermans Park play area	72.2%	38.2%
289.1	Waye Avenue Open Space play area	54.6%	41.8%
290.1	Woodland Gardens MUGA	48.5%	41.8%
292	Wesley Ave Play Area	53.6%	38.2%
301	Crendon Court play area	52.6%	38.2%

There is generally a good spread of play provision across the Borough. Areas with a greater population density are shown to be served by both types of play provision. However, gaps in provision catering for older age ranges are noted to the South Central Area and to the Chiswick Area.

LONDON BOROUGH OF HOUNSLOW

OPEN SPACE STUDY

7.4 Quality

In order to determine whether sites are high or low quality (as recommended by guidance); the scores from the site assessments have been colour-coded against a baseline threshold (high being green and low being red). The table below summarises the results of the quality assessment for play provision for children and young people. A threshold of 60% is applied in order to identify high and low quality. Further explanation of the quality scoring and thresholds can be found in Part 2 (Methodology).

Table 7.3: Quality ratings for provision for children and young people

Analysis area	Scores (%)			Spread	No. of sites	
	Lowest score	Average score	Highest score		Low <60%	High ≥60%
Chiswick Area	62%	67%	73%	11%	0	5
Isleworth and Brentford Area	46%	66%	75%	29%	3	21
North Central Area	40%	58%	74%	34%	7	6
South Central Area	40%	60%	73%	33%	2	7
West Area	30%	57%	73%	43%	11	6
London Borough of Hounslow	30%	62%	75%	45%	23	45

Overall, 66% of play sites rate above the quality threshold. There are however 23 sites which rate below the threshold.

Of the 23 sites to rate below the threshold, several are identified as having a limited range in equipment. For example, Beach Grove Youth Shelter is just a youth shelter within an amenity greenspace whilst Beavers Lane Camp is noted as a small play area. The range and diversity of equipment at a site influences its quality and potential level of use. Consequently, sites with a limited scope of equipment are more likely to rate lower for quality and value.

Some of the lower scoring sites for quality are:

- ◆ Beach Grove basketball area (30%)
- ◆ Beavers Lane Camp play area (40%)
- ◆ Kingsley Avenue Park play area (40%)

The example sites (above) are all identified as containing little play equipment. This is generally perceived as being of poorer quality, particularly Beach Grove basketball area. In addition, the latter two both have bins and benches unlike Beach Grove Basketball area, also illustrating why it scores lower for quality.

A number of the sites rate below the threshold are only just below the quality threshold. Some of these sites lack a few ancillary features and score slightly lower for surface quality but score generally well for overall appearance and cleanliness.

LONDON BOROUGH OF HOUNSLOW

OPEN SPACE STUDY

The majority of play sites do however rate above the threshold. Some of the highest scoring sites include:

- ◀ St John's Gardens play area (75%)
- ◀ Sutton Playing Field play area (74%)
- ◀ Boston Manor Park play area (74%)

These sites are all noted as having a wider range and imaginative forms of equipment. In addition, the equipment is in good condition as are the other features on site such as seating and bins. Boston Manor Park play area contains a MUGA too, further adding to the quality and value of the site.

Proportionally the larger play sites tend to score higher for quality. This is often due to a wider variety of equipment being present which caters towards a greater range of age groups. Such sites are also likely to be linked with additional ancillary facilities such as car parking, toilets and refreshments.

7.5 Value

To determine whether sites are high or low value (as recommended by the Companion Guidance) site assessment scores are colour-coded against a baseline threshold (high being green and low being red). The table overleaf summarises the results of the value assessment for children and young people. A threshold of 20% is applied in order to identify high and low value. Further explanation of the value scoring and thresholds can be found in Part 2 (Methodology).

Table 7.4: Value ratings for provision for children and young people

Analysis area	Scores (%)			Spread	No. of sites	
	Lowest score	Average score	Highest score		Low	High
					<20%	≥20%
Chiswick Area	38%	48%	55%	17%	0	5
Isleworth and Brentford Area	38%	45%	55%	17%	0	24
North Central Area	38%	44%	55%	17%	0	13
South Central Area	38%	47%	55%	17%	0	9
West Area	35%	46%	55%	17%	0	17
London Borough of Hounslow	35%	46%	55%	20%	0	68

All play sites rate above the threshold for value. This demonstrates the important role play provision provides in allowing children to play but also the contribution sites make in terms of giving children and young people safe places to learn, for physical and mental activity, to socialise with others and in creating aesthetically pleasing local environments.

High valued sites tend to reflect the size and amount as well as range of provision present. This often means sites are more popular and well used. Diverse equipment caters to a greater range of ages. Furthermore, such sites often provide added value in terms of healthy, active lifestyles, social inclusion and interaction between individuals whilst also adding to developmental and educational benefits.

LONDON BOROUGH OF HOUNSLOW

OPEN SPACE STUDY

The sites scoring particularly high for value tend to reflect the size and amount/range and role of equipment present on site. The highest scoring sites for value are listed below, each scoring 55%:

- ◀ Bear Road Recreation Ground play area
- ◀ Beaversfield Park play area
- ◀ Bedfont Lane play areas
- ◀ Boston Manor Park play area
- ◀ Chester Road play area
- ◀ Chiswick House and Gardens play area
- ◀ Dukes Meadows water and sand playground
- ◀ Gunnersbury Park play areas
- ◀ Heston Park play area 1
- ◀ South Road Recreation Ground play areas
- ◀ St John's Gardens play areas

Some of these sites are located within parks; which will provide further appeal for their use. They are all observed as containing a variety of equipment. For example, Beaversfield Park has a range of equipment including outdoor gym provision whilst Boston Manor Park play area has a play area and MUGA.

Diverse equipment to cater for a range of ages is also essential. More specifically, provision such as skate park facilities and MUGAs are highly valued forms of play. There are 18 sites with a MUGA and one of these (Thornbury Park) also has a skate park and outdoor gym. Sites containing such forms of provision often tend to rate higher for value.

It is also important to recognise the benefits of play in terms of healthy, active lifestyles, social inclusion and interaction between children plus its developmental and educational value. The importance of play and of children's rights to play in their local communities is essential.

7.6 Summary

Provision for children and young people summary

- ◀ There are 68 play sites identified; a total of over seven hectares.
- ◀ Overall, Hounslow has an equivalent of 0.03 hectares per 1,000 population. The South Central Area (0.01) and the West Area (0.02) have proportional less provision than other areas of the Borough.
- ◀ There is a good spread of provision across the area. All areas with a greater population density are within walking distance of children's play provision. Gaps in provision catering for older age ranges are noted to the South Central Area and Chiswick Area.
- ◀ A greater proportion of play sites (66%) rate above the threshold for quality. Lower quality scoring sites tends to reflect a lack in and/or range of equipment and/or its general condition.
- ◀ All play provision rates above the threshold for value; reflecting the social, healthy and developmental benefits provision can provide.

PART 8: ALLOTMENTS

8.1 Introduction

Allotments are a typology which covers open spaces that provide opportunities for those people who wish to do so to grow their own produce as part of the long term promotion of sustainability, health and social interaction. This includes provision such as allotments, community gardens and city farms.

8.2 Current provision

There are 28 sites classified as active allotments in Hounslow, equating to over 57 hectares.

Table 8.1: Distribution of allotment sites by analysis area

Analysis area	Allotments		
	Number	Size (ha)	Current provision (ha per 1,000 population)
Chiswick Area	7	12.80	0.37
Isleworth and Brentford Area	5	9.61	0.17
North Central	4	8.11	0.15
South Central	5	9.74	0.16
West Area	7	16.98	0.25
London Borough of Hounslow	28	57.24	0.21

The largest forms of allotment provision are Hatton Road Allotments at 5.97 hectares and Church Road Allotments at 5.11 hectares.

The National Society of Allotment and Leisure Gardeners (NSALG) suggests a national standard of 20 allotments per 1,000 households (20 per 2,000 people based on two people per house or one per 100 people). This equates to 0.25 hectares per 1,000 populations based on an average plot-size of 250 square metres (0.025 hectares per plot).

As a whole, Hounslow, based on its current population (269,835) does not meet the NSALG standard. Using this suggested standard, the minimum amount of allotment provision is 67 hectares. There is currently an existing 57 hectares of provision. However, both the Chiswick Area (0.37) and West Area (0.25) meet the suggested NSALG standard.

A more accurate measure of need for allotment provision is demand identified through waiting list figures. This is explored in more detail later in the section.

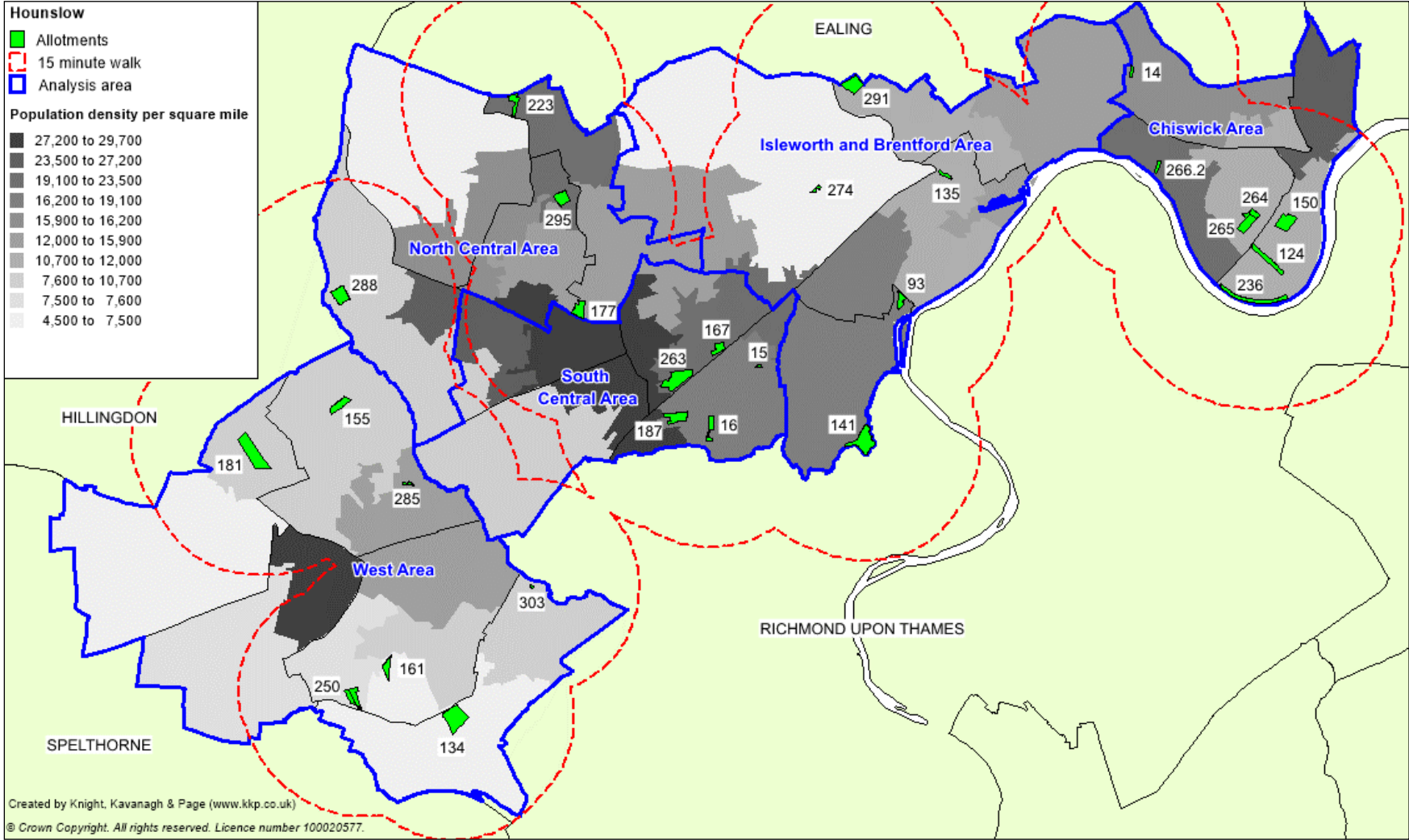
8.3 Accessibility

The community survey found the most common modes of travel to access an allotment is by walking (50%). This is followed by private car (25%).

The most common times willing to be travelled by survey respondents is up to 15 minutes (41%). This is followed by up to 10 minutes (26%). On this basis, a 15-minute walk time (equivalent to 1,200m) has been applied to all allotments to reflect the most popular mode and travel time. This is shown in Figure 8.1.

LONDON BOROUGH OF HOUNSLOW OPEN SPACE STUDY

Figure 8.1: Allotments mapped against 15-minute walk time catchment



LONDON BOROUGH OF HOUNSLOW OPEN SPACE STUDY

Table 8.2: Key to sites mapped

Site ID	Site name	Quality Score	Value score
14	Manor Gardens Allotment	28.8%	19.0%
15	Worton Road Allotment	51.8%	19.0%
16	Gainsborough Gardens Allotment	61.2%	30.0%
93	Park Road Allotment	57.6%	25.0%
124	Chertsey Road Allotments	62.4%	25.0%
134	Church Road Allotments	80.0%	34.0%
135	Church Walk Allotment	42.4%	24.0%
141	Cole Park Allotment	77.6%	25.0%
150	Duke's Meadows Allotment	78.8%	25.0%
155	Faggs Road South Allotments	51.8%	24.0%
161	Fernside Ave Allotments	57.6%	24.0%
167	Glenwood Road Allotments	50.6%	25.0%
177	Harte Road Allotments	58.8%	30.0%
181	Hatton Road Allotments	68.2%	29.0%
187	Hounslow Avenue Allotments	65.9%	24.0%
223	North Hyde Lane Allotments	62.4%	24.0%
236	Promenade Allotment	50.6%	24.0%
250	Snakey Lane Allotments	69.4%	30.0%
263	Stanley Road, Heath and Inwood Road Allotments	68.2%	29.0%
264	Staveley Road Allotment	62.4%	25.0%
265	Staveley Road Allotments/Burial Ground Allotments	64.7%	25.0%
266.2	Strand on the Green Allotments	56.5%	25.0%
274	Syon Park Gardens Allotments	55.3%	25.0%
285	Viola Ave Allotments	54.1%	24.0%
288	Waye Avenue Allotment	52.4%	39.0%
291	Wellmeadow Road Allotments	71.8%	24.0%
295	Westbrook Road Allotments	62.9%	35.0%
303	Saxon Avenue Allotments	47.6%	25.0%

Figure 8.1 shows the distribution of allotment sites across the area against the 15-minute walk time catchment. No significant gaps in provision are observed. However, minor gaps in provision to more densely populated areas are noted to the north-east of the Chiswick Analysis Area and the central West Analysis Area.

It is important to recognise that there are also an additional two sites known to be former allotments and one site understood to not be in use.

One site known as Green Lane is located in the South Central Analysis Area (close to the boundary of the North Central Analysis Area). The site (at 3.09 hectares) is currently identified as an inaccessible natural and semi-natural greenspace. It is understood to have not been in use as allotments for circa 30 years.

LONDON BOROUGH OF HOUNSLOW

OPEN SPACE STUDY

The other site is known as James Street also located in the South Central Analysis Area. It is captured within the site hectareage for Glenwood Road Allotments (KKP 167); Glenwood Road Allotments is 1.29 hectares in size of which 0.47 is allocated to the James Street area. The James Street site is understood to have not been in use as allotments for over 20 years.

It is also understood that Heath Road Allotment (0.92 hectares) is not currently in use. The site is included as part of the Stanley Road, Heath and Inwood Road Allotments (4.51 hectares). The site is located in the South Central Analysis Area.

Demand

Local demand for allotment provision needs to be understood to help inform whether these former allotment sites are still required. Table 8.3 provides a breakdown of the known number of plots, vacancies and waiting list numbers for each analysis area.

Tables 8.3: Plots, vacancy and waiting lists by analysis area

Analysis area	Plots let	Vacant	Waiting list
Chiswick Area	606	8	88
Isleworth and Brentford Area	211	20	99
North Central	104	20	49
South Central	338	60	71
West Area	430	97	68
London Borough of Hounslow	1,689	205	375

Across the Borough there are more individuals on a waiting list than vacant plots available. This suggests in general that demand outweighs supply. Both the Chiswick Area and Isleworth and Brentford Area have noticeably high waiting list numbers.

The West Area is the only analysis area where the number of vacant plots is greater than the waiting list number; suggesting supply is meeting demand

In theory, all vacant plots (205 plots) and disused/former allotment sites (179 plots*) offer a total of 384 plots. This potentially could meet the waiting list number. However, in reality an individual in the east of the Borough is unlikely to be willing to travel to the west of the Borough in order to access a plot. This is supported from the 15-minute walk time catchment set from the respondents to the community survey. Consequently, a more local level of analysis is needed to determine the need for the disused/former sites.

All three disused/former sites are located within the South Central Analysis Area. If vacant plots are firstly looked to be occupied as a priority, this would leave 11 individuals on the waiting list in the South Central Area. The 179 plots which in theory could be offered by the disused/former sites could therefore help to meet this localised demand. The sites may also help to some extent meet some instances of demand from relevant parts of the North Central Area and Isleworth and Brentford Area. However, retaining all three sites would create a localised surplus of supply (as the number of plots would exceed waiting list demand).

Consideration to disposal of some disused/former allotment provision is recommended for exploring. The sale of receipts and/or developer contributions from any disposal should be

* Hectares of former sites (i.e. 3.09 ha + 0.47 ha+ 0.92 ha) = 4.48 ha. An equivalent to 179 plots based on NSALG average of 0.025 hectares per plot

LONDON BOROUGH OF HOUNSLOW OPEN SPACE STUDY

used to help with the reinstatement of the other remaining disused/former provision (i.e. access and quality improvements) as well potentially helping to provide additional opportunities in other areas of the Borough.

Cost and management efficiencies (given their location next to existing allotment provision) would suggest the provision to retain and reinstate as active allotments are Heath Road and/or James Street. The latter is understood to have not been in use for a long period of time (circa 20 years). Further exploration as to why the length of inactive use would be required. The preference could therefore be to retain the Heath Road site. At 0.92 hectares the site could provide approximately 37 plots (based on 0.025 hectares per plot). This in theory could help meet the waiting list demand for both the South Central Area and North Central Area (once the number of vacant plots has been subtracted).

Management

Part of the challenge for the provision of allotments in Hounslow is how sites are managed. Previously allotments had been managed by Carillon. However, all sites are now managed by the Council via Lampton Greenspace 360. The previous management of sites often meant a delay in the turnaround of vacant plots for reuse. Sites now being managed in-house should hopefully help address such issues.

Longer term consideration to leasing or asset transferring the management of allotment sites should be given. This is a best practice example seen across the country and could provide a number of benefits to the Council and allotment users. Self-managed allotments tend to be more proactive in the onsite maintenance and repurposing of plots. This ensures waiting lists are up to date and plots not being used are reallocated at a quicker rate. It could also allow sites to access additional funding streams which were previously not available. The move to self-management of sites would also reduce the management responsibility and costs the Council currently has for provision.

Work would be needed to help establish allotment associations at all sites; as it is understood that there are only a few sites with an allotment society. However, a piecemeal approach could be used with those sites with a society being the first for consideration to self-management. Other sites could then look to follow with a pragmatic approach to their selection. Establishing a forum for the self-managed sites should also be considered as this will provide a useful network for the sharing of ideas, problem solving and as a collective voice to liaise with the Council directly.

LONDON BOROUGH OF HOUNSLOW

OPEN SPACE STUDY

8.4 Quality

To determine whether sites are high or low quality (as recommended by the Companion Guidance) site assessments scores are colour-coded against a baseline threshold (high being green and low being red). The table below summarises the results of the quality assessment for allotments. A threshold of 50% is applied in order to identify high and low quality. Further explanation of how the quality scores and threshold are derived can be found in Part 2 (Methodology).

Table 8.4: Quality ratings for allotments

Analysis area	Scores (%)			Spread	No. of sites	
	Lowest score	Average score	Highest score		Low <50%	High ≥50%
Chiswick Area	29%	58%	79%	50%	1	6
Isleworth and Brentford Area	42%	61%	78%	36%	1	4
North Central	52%	59%	63%	11%	0	4
South Central	51%	59%	68%	17%	0	5
West Area	48%	61%	80%	32%	1	6
London Borough of Hounslow	29%	60%	80%	51%	3	25

Overall, quality of provision is very good with 25 identified sites rating above the threshold for quality. Only three sites rate below the quality threshold. The highest scoring sites are:

- ↳ Church Road Allotments (80%)
- ↳ Duke's Meadow Allotment (79%)
- ↳ Cole Park Allotments (78%)

The sites are identified as having good personal security, signage and boundary fencing. Mastin Moor Community Garden has the additional benefit of seating and bins. Furthermore, both Church Road and Cole Park are recognised as featuring car parking provision within the site. All the sites appear well maintained containing neat plots and good pathways.

It is also important to recognise the Church Road Allotment site is a Green Flag Award winning site. To be successfully awarded a Green Flag, sites must be considered to be maintained and managed to a high standard.

The three sites to rate below the quality threshold are:

- ↳ Manor Gardens Allotments (29%)
- ↳ Church Walk Allotments (42%)
- ↳ Saxon Avenue Allotments (48%)

All three sites are noted as being particularly small in size with only a total of 18 plots being identified across the three. The largest is Church Walk with 8 plots, Saxon Avenue has 6 plots and Manor Gardens has 4 plots. Consequently, given the small size of the sites, the security and ancillary features tend to rate lower. However, despite receiving the lowest rating the Manor Gardens site is a good use of what is a small odd shaped piece of land which is unlikely to be able to be used for any other purpose.

LONDON BOROUGH OF HOUNSLOW OPEN SPACE STUDY

8.5 Value

To determine whether sites are high or low value (as recommended by the Companion Guidance) site assessment scores are colour-coded against a baseline threshold (high being green and low being red). The table below summarises the results of the value assessment for allotments. A threshold of 20% is applied in order to identify high and low value. Further explanation of how the value scores and threshold are derived can be found in Part 2 (Methodology).

Table 8.5: Value ratings for allotments

Analysis area	Scores (%)			Spread	No. of sites	
	Lowest score	Average score	Highest score		Low <20%	High ≥20%
Chiswick Area	19%	24%	25%	6%	1	6
Isleworth and Brentford Area	24%	25%	25%	1%	0	5
North Central	29%	37%	44%	15%	0	4
South Central	19%	25%	30%	11%	1	4
West Area	24%	29%	35%	11%	0	7
London Borough of Hounslow	19%	26%	44%	25%	2	26

Nearly all assessed allotment sites rate above the threshold for value. This reflects the associated social inclusion and health benefits, amenity value and the sense of place offered by such forms of provision.

There are only two sites to rate below the value threshold; Manor Gardens Allotments in the Chiswick Area and Worton Road Allotments in the South Central Area. Both only just rate below the threshold with a score of 19%. The lower rating is likely a reflection of the small number of plots contained within the sites in comparison to other allotment sites. For instance, Manor Road features 4 plots whilst Worton Road Allotments features 12 plots. Consequently, the social and

The highest scoring sites for value are:

- ◆ Waye Avenue Allotments (44%)
- ◆ Westbrook Road Allotments (40%)
- ◆ Harte Road Allotments (35%)
- ◆ Snakey Lane Allotments (35%)

The sites all appear very well maintained and popular. Waye Avenue Allotments scores particularly well due to its links with a local community-based charity. The site is host to a disability project which for example in recent years has helped create a number of raised beds. The site is also recognised as being in an area with a higher rate of child obesity and lower indicator level for general wellbeing.

LONDON BOROUGH OF HOUNSLOW

OPEN SPACE STUDY

Westbrook Road Allotments also rates highly for value. It is recognised as providing the usual social and health benefits often associated with an allotment. It is also identified as being in an area with a higher rate of child obesity, a lower level indicator for general wellbeing and in an area ranked as most deprived on the Indices of Multiple Deprivation. The sites value is therefore recognised as having the potential to help address such issues highlighted by the wider health indicators.

The value of allotments is further demonstrated by the existence of waiting lists at sites signalling demand for provision.

8.6 Summary

<p>Allotments summary</p> <ul style="list-style-type: none">◀ There are 28 allotments sites: equating to more than 57 hectares◀ Current provision of 0.21 hectares per 1,000 population is below the NSALG recommended amount (0.25 hectares per 1000 people).◀ Catchment mapping does not highlight any significant gaps in provision.◀ Quality and value of provision is good overall. The value of allotments is widely recognised due to the associated social inclusion, health benefits and the sense of place they offer.◀ Waiting lists operate at sites suggesting a continued level of demand for provision.◀ There are three disused/former allotment sites highlighted. These present an opportunity to help meet localised demand which should be explored further.
--

LONDON BOROUGH OF HOUNSLOW

OPEN SPACE STUDY

PART 9: CEMETERIES/CHURCHYARDS

9.1 Introduction

Cemeteries and churchyards include areas for quiet contemplation and burial of the dead. Sites can often be linked to the promotion of wildlife conservation and biodiversity.

9.2 Current provision

There are 13 sites classified as cemeteries/churchyards, equating to over 33 hectares of provision. No site size threshold has been applied and as such all identified provision is included within the audit.

Table 9.1: Distribution of cemeteries and churchyards

Analysis area	Cemeteries/churchyards	
	Number of sites	Size (ha)
Chiswick Area	2	6.72
Isleworth and Brentford Area	2	11.29
North Central	2	4.49
South Central	0	-
West Area	7	11.33
London Borough of Hounslow	13	33.83

The largest contributor to burial provision in the area is Gunnersbury Cemetery (8.70 hectares). This followed by South West Middlesex Crematorium Gardens at 3.72 hectares.

Lampton GreenSpace 360 (a new subsidiary of the council-owned trading company) manages the cemeteries and churchyards on behalf of the London Borough of Hounslow. Before March 2018, the management of the Borough's cemeteries was by Carillion.

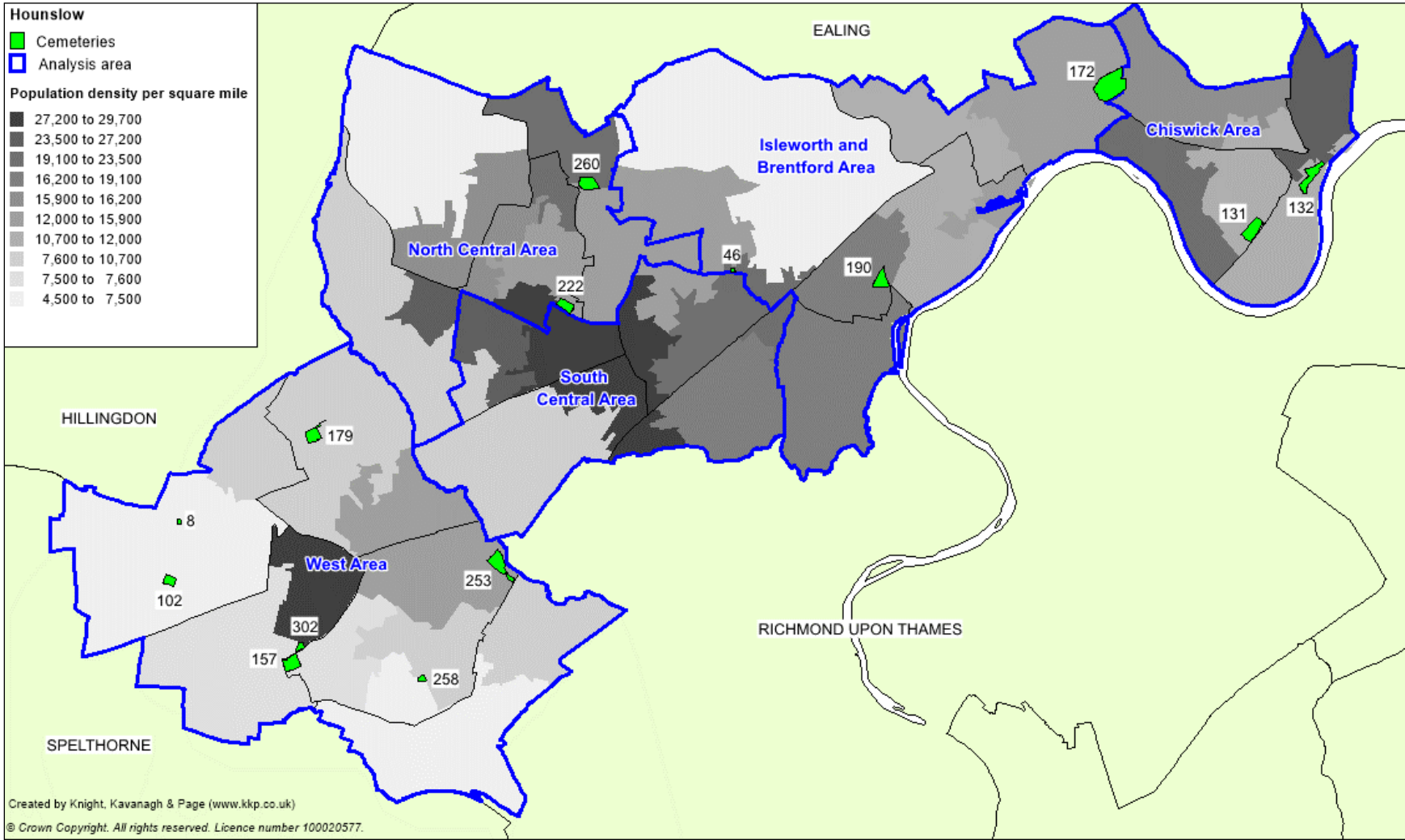
9.3 Accessibility

No accessibility standard is set for this typology and there is no realistic requirement to set such standards. Provision should be based on burial demand.

Figure 9.1 shows cemeteries and churchyards mapped against analysis areas.

LONDON BOROUGH OF HOUNSLOW OPEN SPACE STUDY

Figure 9.1: Cemetery sites mapped



LONDON BOROUGH OF HOUNSLOW OPEN SPACE STUDY

Table 9.2: Key to sites mapped

Site ID	Site name	Quality Score	Value Score
8	St Mary's Church, Bedfont	56.9%	44.0%
102	Bedfont Cemetery	57.1%	44.0%
131	Chiswick New Cemetery	61.2%	34.0%
132	Chiswick Old Cemetery	63.3%	34.0%
157	Feltham Cemetery	55.7%	49.0%
172	Gunnersbury Cemetery	62.1%	44.0%
179	Hatton Cemetery	53.9%	29.0%
190	Isleworth Cemetery	57.4%	28.0%
222	New Brentford Cemetery	58.9%	38.0%
253	South West Middlesex Crematorium Gardens	67.3%	50.0%
258	St George's Church	50.7%	33.0%
260	St Leonards Church Heston	64.1%	39.0%
302	St Dunstan's Church	52.0%	28.0%

In terms of provision, mapping demonstrates a fairly balanced distribution across the area. No provision is identified in the South Central Area. As noted earlier, the need for additional cemetery provision should be driven by the requirement for burial demand and capacity.

9.4 Quality

To determine whether sites are high or low quality (as recommended by the Companion Guidance) site assessments scores are colour-coded against a baseline threshold (high being green and low being red). The table below summarises the results of the quality assessment for cemeteries. A threshold of 55% is applied in order to identify high and low quality. Further explanation of how the quality scores and threshold are derived can be found in Part 2 (Methodology).

Table 9.3: Quality ratings for cemeteries

Analysis area	Scores (%)			Spread	No. of sites	
	Lowest score	Average score	Highest score		Low <55%	High ≥55%
Chiswick Area	61%	62%	63%	2%	0	2
Isleworth and Brentford Area	57%	60%	62%	5%	0	2
North Central Area	59%	62%	64%	5%	0	2
South Central Area	-	-	-	-	-	-
West Area	51%	57%	70%	19%	3	4
London Borough of Hounslow	51%	59%	70%	19%	3	10

The majority of cemeteries and churchyards in the Borough (77%) rate above the threshold set for quality; suggesting a reasonably high standard of quality.

LONDON BOROUGH OF HOUNSLOW

OPEN SPACE STUDY

South West Middlesex Crematorium Gardens in Hanworth, Middlesex is the highest scoring site for quality with a score of 70%. It is the only crematorium situated in the London Borough of Hounslow. It is observed as being well-maintained with accessible paths and ancillary features such as seating, bins and car parking. It also has excellent signage, directional signposts, formal and informal gardens of remembrance and a child burial area; all add to the quality of the site as well as the aesthetic value and health benefits. Its high quality is represented by it previously being a Green Flag Award site (2017/18).

The only three sites to rate below the quality threshold are:

- ◀ Hatton Cemetery (54%)
- ◀ St Dunstan's Church (52%)
- ◀ St George's Church (51%)

Note that these sites do not significantly score lower than the quality threshold of 55%. The latter two sites score lower due to a lack of paths between gravestones and perceived general maintenance in comparison to other similar sites. Hatton Cemetery scores slightly higher than the other two lower scoring sites due to better perceived overall maintenance, good pathways and seating. No major quality issues are highlighted.

9.5 Value

To determine whether sites are high or low value (as recommended by the Companion Guidance) site assessment scores are colour-coded against a baseline threshold (high being green and low being red). The table below summarises the results of the value assessment for cemeteries. A threshold of 20% is applied in order to identify high and low value. Further explanation of how the value scores and threshold are derived can be found in Part 2 (Methodology).

Table 9.4: Value ratings for cemeteries

Analysis area	Scores (%)			Spread	No. of sites	
	Lowest score	Average score	Highest score		Low <20%	High ≥20%
Chiswick Area	34%	34%	34%	0%	0	2
Isleworth and Brentford Area	28%	36%	44%	16%	0	2
North Central Area	38%	39%	39%	1%	0	2
South Central Area	-	-	-	-	-	-
West Area	28%	40%	50%	22%	0	7
London Borough of Hounslow	28%	38%	50%	22%	0	13

All identified cemeteries and churchyards are assessed as being of high value, reflecting their role within local communities. In addition, the cultural/heritage value of sites and the sense of place they provide for local people is acknowledged in the assessment scoring. High scoring sites for value offer visually attractive landscape benefits and opportunities to serve an important function for a local community. As well as providing burial space, cemeteries and churchyards can often offer important low impact recreational benefits to the local area (e.g. walking, habitat provision, wildlife watching).

As well as scoring the highest for quality, South West Middlesex Crematorium Gardens also scores the highest for value. It has neat gardens, numerous benches, attractive landscape, enhancing amenity and structural landscape benefits. Also, it is surrounded by Pevensey Road Nature reserve adding ecological value.

All sites score high for value which reflects their role and use to the communities they serve.

9.6 Summary

Cemeteries summary

- ◀ There are 13 cemeteries and churchyards, equating to over 33 hectares.
- ◀ The largest site is Gunnersbury Cemetery (8.70 hectares), one of the highest scoring sites for both quality (62%) and value (44%). The highest scoring site for quality (70%) and value (50%) is South West Middlesex Crematorium Gardens.
- ◀ No standards are set for cemeteries. The need for additional cemetery provision should be driven by the requirement for burial demand and capacity.

PART 10: GREEN CORRIDORS

10.1 Introduction

The green corridors typology includes sites that offer opportunities for walking, cycling or horse riding, whether for leisure purposes or travel and opportunities for wildlife migration.

10.2 Current provision

There are 10 sites specifically classified as green corridor provision.

- ◀ Arundel Rd Amenity space
- ◀ Dan Mason Drive
- ◀ Fruen Road Open Space
- ◀ Green Corridor off Whitton Dene
- ◀ Land at Great South West Road
- ◀ Longford River corridor-Longford Ave
- ◀ Longford River corridor-New Road
- ◀ Longford River corridor-Ruskin Ave
- ◀ Off Hatton Road
- ◀ Westmacott Alleyways

It is acknowledged that there are other forms of provision in Hounslow which contribute to green corridors. Two significant contributors are the River Thames and the River Crane Valley.

The latter consists of a number of open space sites which are already included within this study. These have not been categorised as green corridors as they are already included as other types of open space such as natural and semi-natural greenspace, amenity greenspace and parks and gardens. Sites classified as another open space type but which form part of the Crane Valley include:

- ◀ Crane Park
- ◀ West of Crane Park
- ◀ Pevensey Road Open Space
- ◀ Crane Park South (River Crane Land)
- ◀ Brazil Mill Woods (Staines Road)
- ◀ Donkey Woods and Brazil Mill
- ◀ Cranebank Water Meadows LNR
- ◀ Causeway – Water Meadows
- ◀ Crane Valley Park Cranebank
- ◀ Avenue Park
- ◀ Waye Avenue Open Space

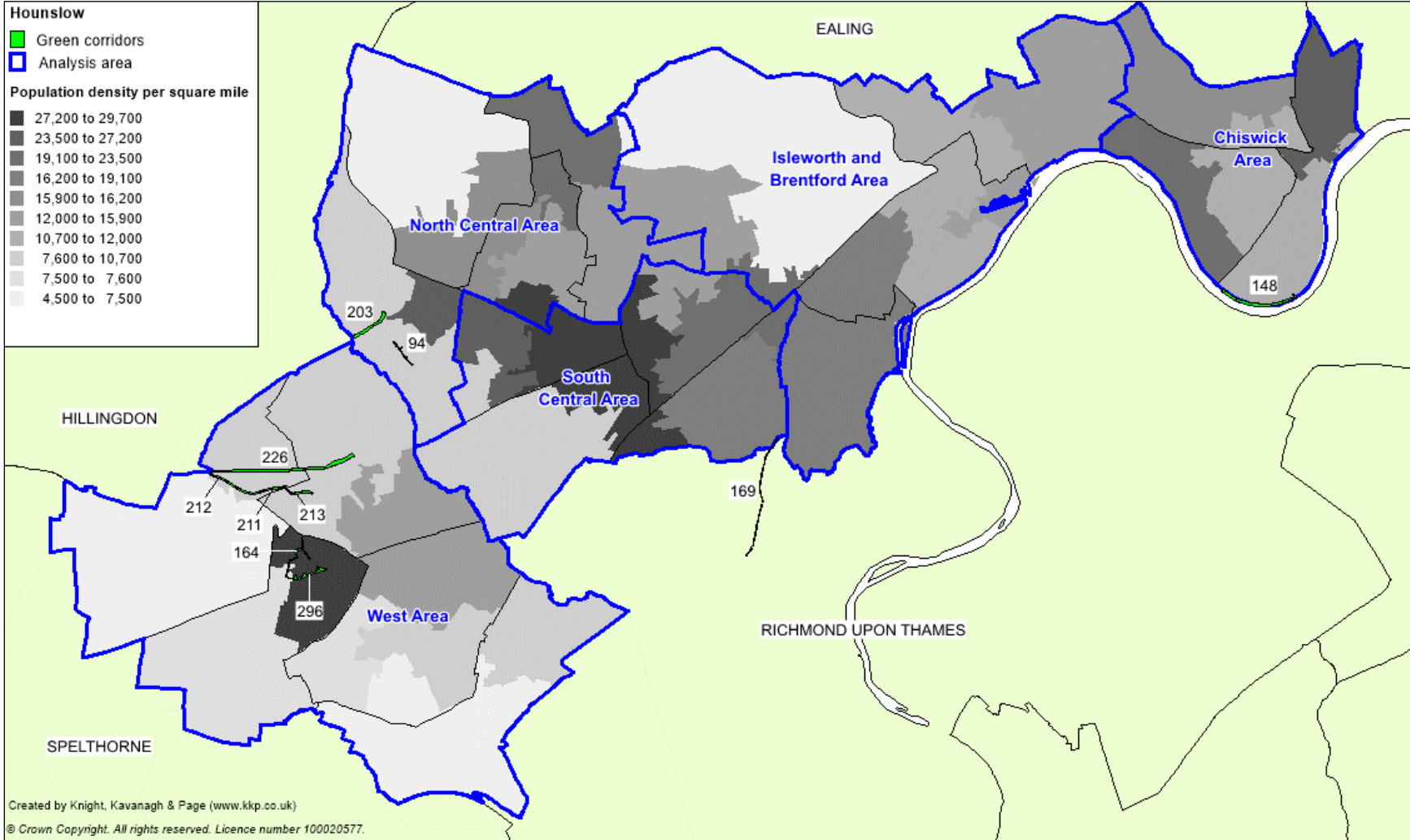
Consequently, there may be other instances where an open space site will also offer a dual role and function relating to green corridors.

10.3 Accessibility

It is difficult to assess green corridors against catchment areas due to their linear nature and usage. Figure 10.1 overleaf shows green corridors mapped in the area.

LONDON BOROUGH OF HOUNSLOW OPEN SPACE STUDY

Figure 10.1: Green corridors mapped



**LONDON BOROUGH OF HOUNSLOW
OPEN SPACE STUDY**

LONDON BOROUGH OF HOUNSLOW OPEN SPACE STUDY

Table 10.1 Key to sites mapped

Site ID	Site name	Quality score	Value Score
94	Arundel Rd Amenity space	74.8%	38.0%
148	Dan Mason Drive	60.2%	28.0%
164	Fruen Road Open Space	74.8%	29.0%
169	Green corridor off Whitton Dene	52.4%	30.0%
203	Land at Great South West Road	58.3%	35.0%
211	Longford River corridor - Longford Ave	45.6%	33.0%
212	Longford River corridor - New Road	32.0%	33.0%
213	Longford River corridor - Ruskin Ave	55.3%	29.0%
226	Off Hatton Road	60.2%	29.0%
296	Westmacott Alleyways	74.8%	34.0%

10.4 Quality

To determine whether sites are high or low quality (as recommended by the Companion Guidance) site assessments scores are colour-coded against a baseline threshold (high being green and low being red). A threshold of 60% is applied in order to identify high and low quality. Further explanation of how the quality scores are derived can be found in Part 2 (Methodology).

Table 10.2: Quality ratings for green corridors

Analysis area	Scores (%)			Spread	No. of sites	
	Lowest score	Average score	Highest score		Low <60%	High ≥60%
Chiswick Area	60%	60%	60%	0%	0	1
Isleworth and Brentford Area	-	-	-	-	0	0
North Central Area	58%	67%	75%	17%	1	1
South Central Area	52%	52%	52%	0%	1	0
West Area	32%	57%	75%	43%	3	3
London Borough of Hounslow	32%	59%	75%	43%	5	5

Half of green corridors rate above the threshold for quality. Sites scoring below the threshold are mainly due to limited access and narrow entrances, hindering usage for users.

The joint three highest scoring sites for quality (scoring 75% each) are Arundel Rd, Fruen Road Open Space and Westmacott Alleyways. The sites have good boundaries, bins, pathways and score well for overall maintenance. Furthermore, they all have the additional benefit of lighting which helps to increase security perceptions.

The lowest scoring sites are Longford River Corridor-Longford Ave (46%) and Longford River Corridor-New Road (32%). Both sites appear inaccessible with narrow entrances, poor

LONDON BOROUGH OF HOUNSLOW OPEN SPACE STUDY

pathways and lack of seating. These are considered to hinder the usage of the sites and their overall quality.

10.5 Value

To determine whether sites are high or low value (as recommended by the Companion Guidance) site assessment scores are colour-coded against a baseline threshold (high being green and low being red). A threshold of 20% is applied in order to identify high and low value. Further explanation of how the value scores are derived can be found in Part 2 (Methodology).

Table 10.3: Value ratings for green corridors

Analysis area	Scores (%)			Spread	No. of sites	
	Lowest score	Average score	Highest score		Low <20%	High ≥20%
Chiswick Area	28%	28%	28%	0%	0	1
Isleworth and Brentford Area	-	-	-	-	0	0
North Central Area	35%	37%	38%	3%	0	2
South Central Area	30%	30%	30%	0%	0	1
West Area	29%	31%	34%	5%	0	6
London Borough of Hounslow	28%	32%	38%	10%	0	10

All green corridors rate above the threshold for value. It is important to highlight that the green corridors serve as an important link between different open space sites. A summary of the connections each green corridor provides is set out below:

Table 10.4: Connecting open space sites to green corridors

Green corridor	Other connecting open space sites
Arundel Rd Amenity space	Chester Road Open Space, Cranebank Water Meadows LNR
Dan Mason Drive	Promenade Allotments, Dukes Hollow
Fruen Road Open Space	The Pitts, Westmacott Alleways
Westmacott Alleways	The Pitts, Fruen Road Open Space
Green corridor off Whitton Dene	Bulls Field, Mogden Sewerage Works
Land at Great South West Road	Crane Valley Park Cranebank,
Longford River corridor (Longford Ave, New Road, Ruskin Ave)	Hatton Meadows, Swansea Road, Feltham Parks
Off Hatton Road	Hatton Meadows, Swansea Road

Arundel Road (38%) and Land at Great South West Road (35%) rate the highest for value. Both score high for paths, enabling a range of users to access the site and within, each connect to another open space site and have high amenity and health benefits.

10.6 Summary

Summary

- ◀ There are 10 specific green corridors identified across Hounslow. However, several other forms of open space provide a secondary role similar to green corridors.
- ◀ Other strategic contributors include the River Thames and River Crane Valley.
- ◀ Five sites rate above the threshold for quality. A couple of sites to rate lower for quality appear to not be accessible.
- ◀ All sites also rate above the threshold for value. This reflects the sites offer to recreational opportunities such as walking, cycling and wildlife migration.

PART 11: PROVISION STANDARDS

The following section derives and details the approach to local open space provision standards for Hounslow.

Setting provision standards is a useful tool in helping to determine potential deficiencies and surpluses of open space (as recommended by best practice). They help to identify current provision levels and how they compare in context of each analysis area, the Borough as a whole and any national benchmarks (where applicable). These in turn help to inform priorities and recommendations for open space provision in addressing instances of deficiencies including potential opportunities to explore.

It is important to recognise that there are no prescribed national standards for open space provision. In general, very little guidance is offered at a national level for quality with benchmarking of standards focusing on quantity and accessibility levels.

The following sections provide an overview of the recommended standards in terms of quality, accessibility and quantity.

11.1: Quality and value

Each type of open space receives a separate quality and value score. This also allows for application of a high and low quality/value matrix to further help determine prioritisation of investment and to identify sites that may be surplus as a particular open space type.

Assessing the quality and value of open spaces is used to help identify those sites which should be given the highest level of protection, those which require enhancement and those which may no longer be needed for their present purpose. When analysing the quality/value of a site, it should be done in conjunction with regard to the quantity and accessibility of provision in the area (i.e. whether there is a deficiency).

There is a need for flexibility to the enhancing of sites within close proximity to sites of low quality. In some instances, a better use of resources and investment may be to focus on more suitable sites for enhancement as opposed to trying to enhance a site that is not appropriate or cost effective to do so.

The high/low classification gives the following possible combinations of quality and value:

LONDON BOROUGH OF HOUNSLOW OPEN SPACE STUDY

High quality/low value

The preferred policy approach to a space in this category should be to enhance its value in terms of its present primary function. If this is not possible, consideration to a change of primary function should be given (i.e. a change to another open space typology).

High quality/high value

All open spaces should have an aspiration to come into this category and the planning system should then seek to protect them. Sites of this category should be viewed as being key forms of open space provision.

Low quality/low value

The policy approach to these spaces or facilities in areas of identified shortfall should be to enhance their quality provided it is possible also to enhance their value.

For open spaces in areas of sufficiency a change of primary typology should be first considered. If no shortfall of other open space typologies is noted than the site may be redundant/ 'surplus to requirements'.

Low quality/high value

The policy approach to these spaces should be to enhance their quality to the applied standards. Therefore, the planning system should initially seek to protect them if they are not already so.

Implications and recommendations

A summary of the high and low quality sites in each analysis area is shown in the following table. The purpose of the table is to highlight sites for each typology scoring low for quality and/or value in each analysis area. This is intended to act as a stepping stone to consideration of their future action and requirement.

Table 11.1.1: Low quality and/or value sites by analysis area

Analysis area	Site name	Typology	Quality	Value
Chiswick Area	Manor Gardens Allotments	Allotments	Low	Low
	The Promenade	Amenity greenspace	Low	High
	Turnham Green West	Parks and Gardens	Low	High
Isleworth and Brentford Area	Clayponds Recreation Ground MUGA	Play provision	Low	High
	Clitherows Island	Semi / Natural greenspaces	Low	High
	Lanadron Close play area	Play provision	Low	High
	Marbaix Gardens	Parks and Gardens	Low	High
	Northcote Avenue	Amenity greenspace	Low	High
	Off Warton Road	Amenity greenspace	Low	High
	St Paul's Recreation Ground play area	Play provision	Low	High
Watermans Park	Parks and Gardens	Low	High	

LONDON BOROUGH OF HOUNSLOW OPEN SPACE STUDY

Analysis area	Site name	Typology	Quality	Value
	Wyke Green	Parks and Gardens		
North Central Area	Aston Green	Amenity greenspace		
	Beavers Lane Camp play area	Play provision		
	Biscoe Close play area	Play provision		
	Biscoe Close MUGA	Play provision		
	Causeway - Water Meadows	Semi / Natural greenspaces		
	Chester Road play area	Play provision		
	Crameswater Park	Amenity greenspace		
	Crane Valley Park Cranebank	Semi / Natural greenspaces		
	Heston Green	Amenity greenspace		
	Johnson Road MUGA	Play provision		
	Land at Great South West Road	Green corridors		
	Land at NE cnr of Great SW Rd and The Parkway	Amenity greenspace		
	Land west of North Hyde Lane	Amenity greenspace		
	Sutton Lane Open Space	Amenity greenspace		
	The Glen	Amenity greenspace		
	Vista centre	Amenity greenspace		
	Waye Avenue Open Space play area	Play provision		
Wesley Ave Play Area	Play provision			
South Central Area	Worton Road allotments	Allotments		
	Bulls Field	Amenity greenspace		
	Cobbs Road amenity space	Amenity greenspace		
	Kingsley Avenue Park	Amenity greenspace		
	Kingsley Avenue Park play area	Play provision		
	Maitland Close	Amenity greenspace		
	The Highlands Open Space	Amenity greenspace		
	Woodland Gardens MUGA	Play provision		
West Area	Beach Grove basketball area	Play provision		
	Bear Road Recreation Ground play area	Play provision		
	Bear Road Recreation Ground MUGA	Play provision		
	Bedfont Lane play areas	Play provision		
	Bedfont Lane MUGA	Play provision		
	Bedfont Library	Amenity greenspace		
	Bedfont Road	Semi / Natural greenspaces		
	Burns Ave north	Amenity greenspace		
	Beach Grove youth shelter	Play provision		

LONDON BOROUGH OF HOUNSLOW OPEN SPACE STUDY

Analysis area	Site name	Typology	Quality	Value
	Crane Park play area	Play provision		
	east of esate near Clifton Ave	Amenity greenspace		
	Elm Road	Amenity greenspace		
	Feltham parks Glebelands, Blenheim Park, Feltham Arenas	Parks and Gardens		
	Gardner House amenity space	Amenity greenspace		
	Grosvenor Park play area	Play provision		
	Grosvenor Park kickabout	Play provision		
	Grovestile Way	Amenity greenspace		
	Hatton Cemetery	Cemeteries		
	Longford River corridor - Longford Ave	Green corridors		
	Longford River corridor - New Road	Green corridors		
	Longford River corridor - Ruskin Ave	Green corridors		
	Ludlow Nature Reserve	Semi / Natural greenspaces		
	Off Saxon Avenue	Amenity greenspace		
	Rochester Avenue Open Space	Amenity greenspace		
	Seymour Gardens open space	Amenity greenspace		
	Southville Road MUGA	Play provision		
	Spinney Drive	Amenity greenspace		
	St George's Church	Cemeteries		
	The Alders	Amenity greenspace		
	The Pitts	Semi / Natural greenspaces		
	West Road/Staines Road	Amenity greenspace		
	Crendon Court play area	Play provision		
	St Dunstan's Church	Cemeteries		

11.2: Accessibility

Accessibility catchments for different types of provision are a tool to identify communities currently not served by existing facilities. It is recognised that factors that underpin catchment areas vary from person to person, day to day and hour to hour. For the purposes of this process this problem is overcome by accepting the concept of 'effective catchments', defined as the distance that would be travelled by the majority of users.

Results of the community survey have been used to set initial accessibility catchments. These are presented in Table 2.3 and are applied to help inform deficiencies in each form of open space provision.

LONDON BOROUGH OF HOUNSLOW

OPEN SPACE STUDY

If an area does not have access to the required level of provision (consistent with the catchments) it is deemed deficient. KKP has identified instances where new sites may be needed or potential opportunities could be explored in order to provide comprehensive access to this type of provision (i.e. a gap in one form of provision may exist but the area in question may be served by another form of open space).

Implications and recommendations

The principles set out below are intended to mitigate for the impact of increases in demand on existing provision. An increase in population will reduce the lifespan of certain sites and/or features (e.g. play equipment, maintenance regimes etc). This will lead to the requirement to refurbish and/or replace such forms of provision. Consequently, the recommended approach is to increase the capacity of provision and/or enhance the existing provision available.

In determining the subsequent actions for any identified catchment gaps the following key principles are adhered to:

- ◆ Increase capacity/usage in order to meet increases in demand, or
- ◆ Enhance quality in order to meet increases in demand, or
- ◆ Commuted sum for ongoing maintenance/repairs to mitigate impact of new demand

The table below summarises the deficiencies identified from the application of the accessibility standards together with the recommended actions. Please refer to the individual typology sections to view the catchment maps.

Table 11.2.1: Accessibility catchment summary by analysis area

Analysis area	Typology	Catchment gap	Comment/action
Chiswick Area	Allotments	Minor gap in 15-minute walk time to north east	Local demand should inform need for new provision
	Parks and gardens	Minor gap in 15-minute walk time to north east	Gap is very minor in size and unlikely to be an issue
	Play provision for older age ranges	Gap in 15-minute walk time	Explore opportunities to enhance range of equipment at existing sites such as Chiswick Common, Chiswick House and Gardens, Dukes Meadow, Harvard Hill Recreation Ground and Homefields Recreation Ground
Isleworth and Brentford Area	Amenity greenspace	Minor gap in 15-minute walk time to north west	Area of lower population density. Area also served by Osterley Park (NSN)
North Central Area	Parks and gardens	Minor gap in 15-minute walk time to north west	Area of lower population density. Also served by Avenue Park (AGS) and parts of the Crane Valley Park
South Central Area	Play provision for older age ranges	Gap in 15-minute walk time	Explore opportunities to enhance range of equipment at existing sites such as Midsummer Park, Beaversfield Park and/or Wesley Ave.
West Area	Allotments	Minor gap in 15-minute walk time to west	Local demand should inform need for new provision

LONDON BOROUGH OF HOUNSLOW OPEN SPACE STUDY

	Parks and gardens	Minor gap in 15-minute walk time to west	Area of lower population density. Also served by Bedfont Lakes Country Park
--	-------------------	--	---

The London Plan also offers guidance on the catchment areas of open space. This classifies sites by their size. A summary of the applicable guidance is set out in Table 11.2.2.

Table 11.2.2: London Plan benchmarks

Open space type	Size guide	Distance from homes
Regional Parks	400 hectares	3.2 to 8 kilometres
Metropolitan Parks	60 hectares	3.2 kilometres
District Parks	20 hectares	1.2 kilometres
Local Parks and Open Spaces	2 hectares	400 metres

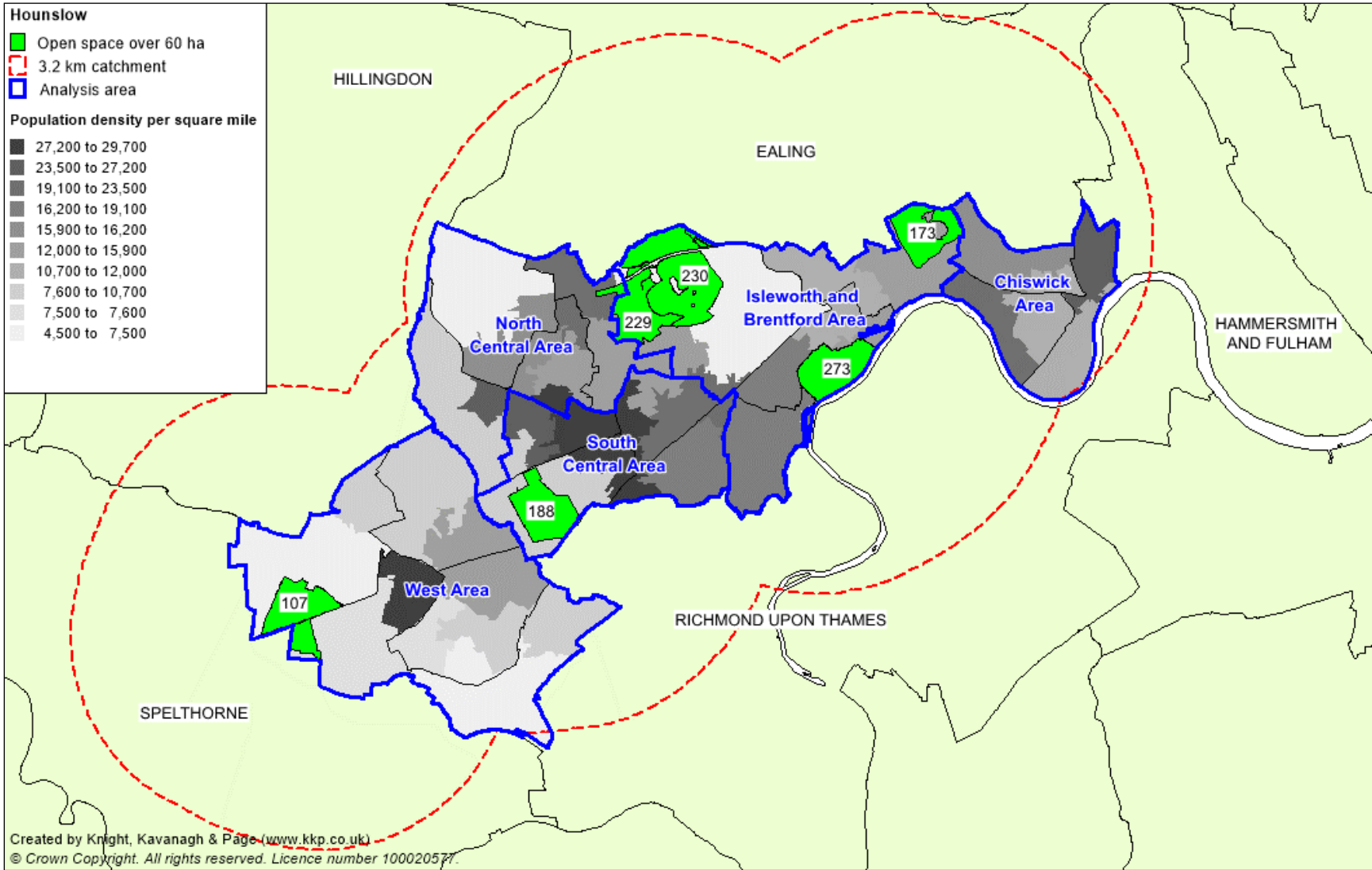
Figures 11.1, 11.2 and 11.3 show the applicable catchments based on the London Plan. Commentary on the application of these benchmarks is set out in Table 11.2.3.

Table 11.2.3: London Plan benchmark summary

London Plan Benchmark	Catchment gap
Sites over 60 ha with 3.2 kilometre	No gap in mapping
Sites over 20 ha with 1.2 kilometre	Gaps in provision based on mapping to the North Central and South Central areas. <ul style="list-style-type: none"> ◀ Gap to the South Central Area is served by smaller forms of provision such as Lampton Park ◀ Gap to North Central Area is likely to be served to some extent by sites forming the River Crane Valley
Sites over 2 ha with 400 metre	Several gaps in mapping identified. However, most gaps do not exist if the above benchmarks are applied.

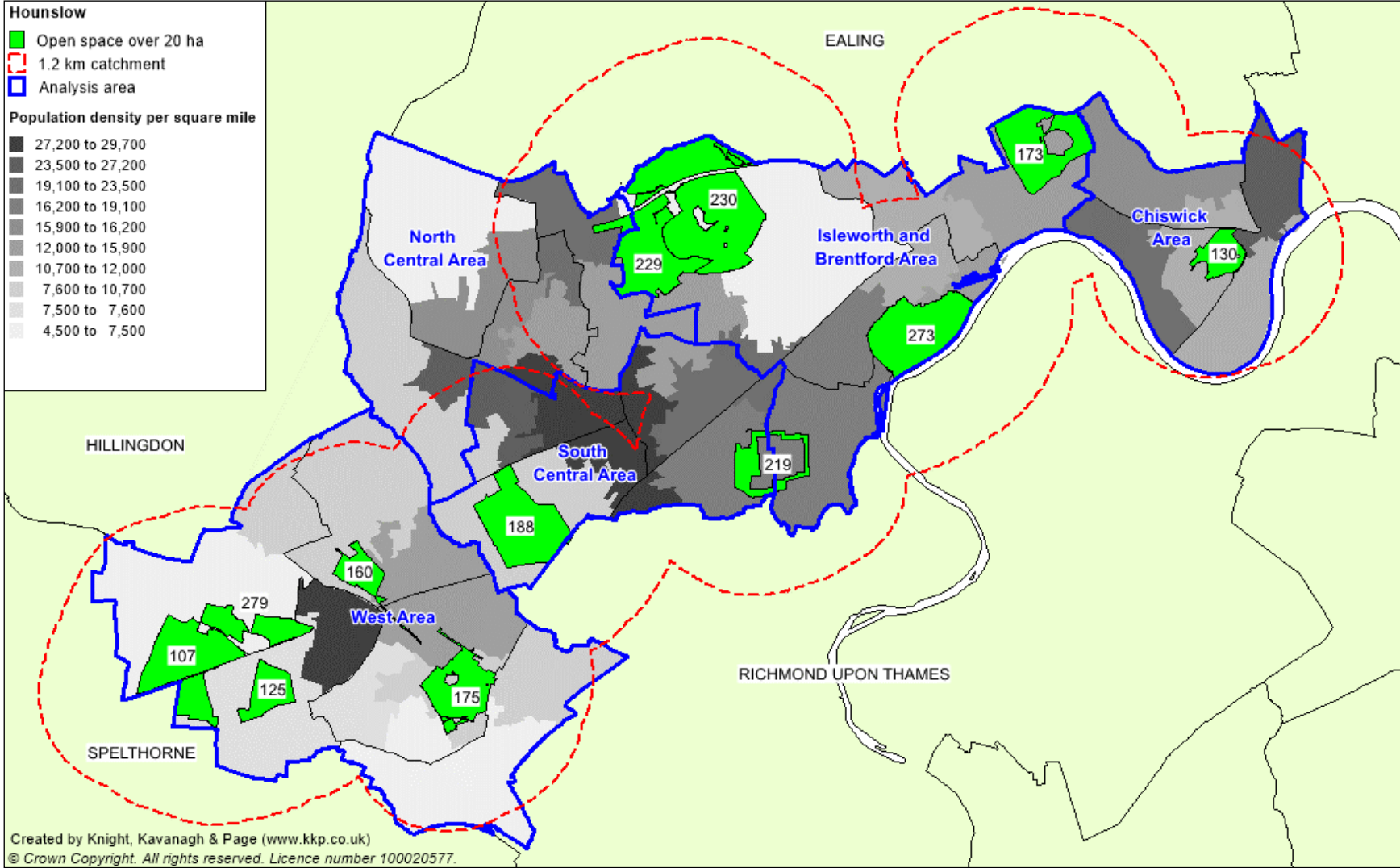
LONDON BOROUGH OF HOUNSLOW OPEN SPACE STUDY

Figure 11.1: Metropolitan Parks (sites over 60 hectares with a 3.2-kilometre catchment)



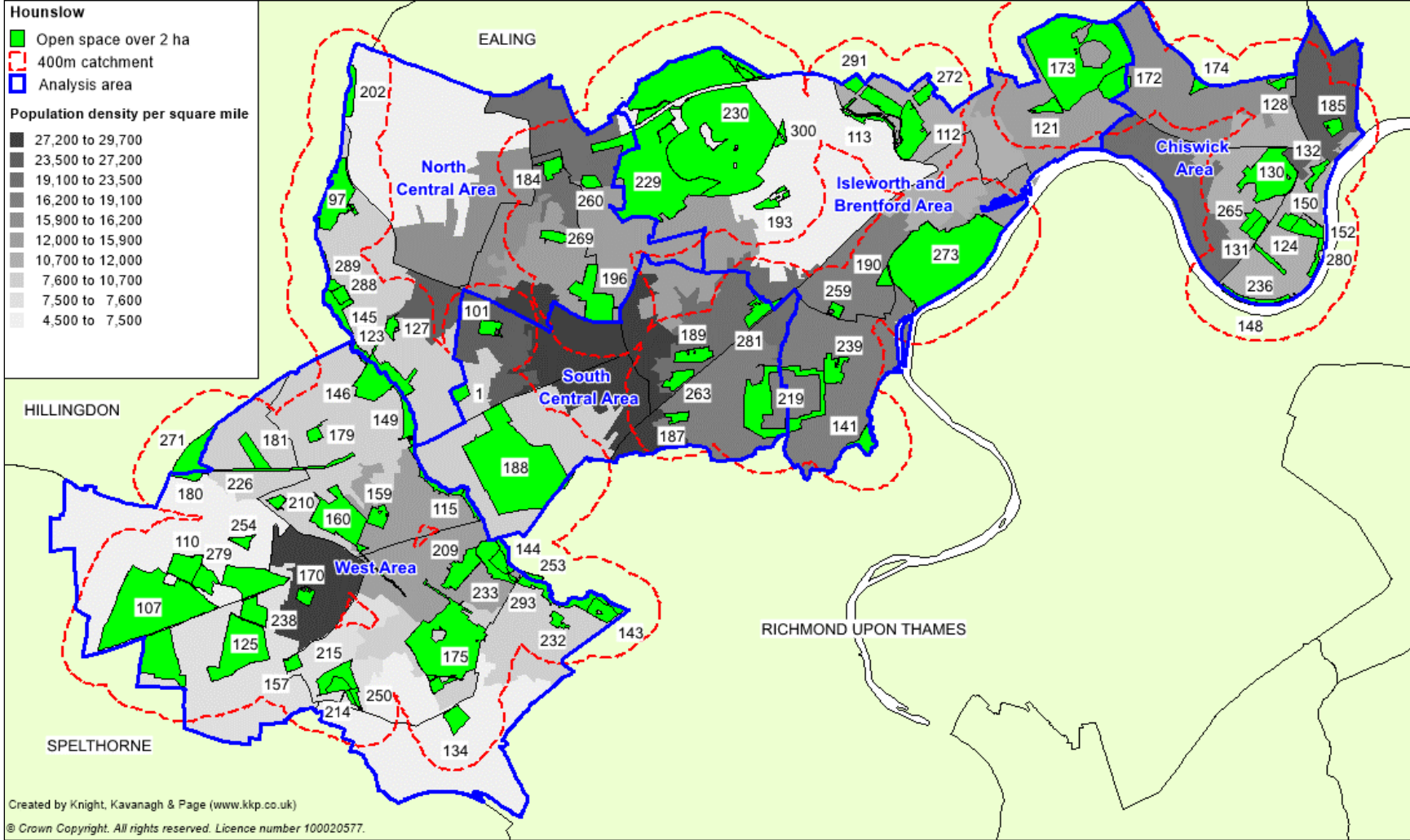
LONDON BOROUGH OF HOUNSLOW OPEN SPACE STUDY

Figure 11.2: District Parks (sites over 20 hectares with a 1.2-kilometre catchment)



LONDON BOROUGH OF HOUNSLOW OPEN SPACE STUDY

Figure 11.3: Local Parks and Open Spaces (sites over 2 hectares with a 3.2-kilometre catchment)



**LONDON BOROUGH OF HOUNSLOW
OPEN SPACE STUDY**

LONDON BOROUGH OF HOUNSLOW

OPEN SPACE STUDY

11.3: Quantity

Quantity standards can be used to identify areas of shortfalls and help with setting requirements for future developments.

The current provision levels can be used to help identify where areas may have a shortfall against the recommended quantity standards for Hounslow. Table 11.3.1 and 11.3.2 shows the position for each sub-area as to whether it is sufficient or identified as having a shortfall against the recommended quantity standards for each type of open space.

Table 11.3.1: Current provision against recommended quantity standards

Analysis area	Parks and gardens*		Natural & Semi-natural		Amenity greenspace		Allotments	
	0.85		1.74		0.64		0.21	
	Current provision	+ / -	Current provision	+ / -	Current provision	+ / -	Current provision	+ / -
Chiswick Area	0.10	-0.75	0.07	-1.67	0.48	-0.15	0.37	0.16
Isleworth and Brentford Area	1.90	1.06	2.43	0.69	0.76	0.13	0.17	-0.04
North Central	0.40	-0.45	0.26	-1.48	0.68	0.04	0.15	-0.06
South Central	0.27	-0.58	1.89	0.15	0.10	-0.53	0.16	-0.05
West Area	1.21	0.36	3.02	1.28	1.04	0.40	0.25	0.04

Most analysis areas have a shortfall in some form of open space provision. The exception is the West Area which is above the recommended standards in all types of open space.

Provision for children and young people

Table 11.3.2 shows the position for each sub-area as to whether it is sufficient or identified as having a shortfall against the recommended standard in terms of provision for children and young people.

Table 11.3.2: Current play provision against recommended quantity standard

Analysis area	Hectares per 1000 population	
	Current provision	Sufficiency/deficiency against 0.03 recommended standard
Chiswick Area	0.04	0.01
Isleworth and Brentford Area	0.04	0.01
North Central Area	0.04	0.01
South Central Area	0.01	-0.02
West Area	0.02	Level

* Figures do not include Syon Park or Chiswick House and Gardens due to restricted access

LONDON BOROUGH OF HOUNSLOW OPEN SPACE STUDY

The South Central Area is the only analysis area to have a shortfall in quantity highlighted. The West Area is shown to be level with the Borough wide standard.

Identifying priorities

The focus for areas identified as being sufficient against the existing quantity standards will be for priorities to ensure quality and accessibility standards are being met. Table 11.3.1 and 11.3.2 also highlights those areas of the Borough with shortfalls in open space provision.

The recommended quantity standards should also be used to determine the open space requirements as part of new housing developments (as they are based on up to date current provision levels). In the first instance, all types of open space provision should look to be provided as part of new housing developments.

If this is not considered viable, the column signalling whether an analysis area is sufficient or has a shortfall against the recommended quantity standards may be used to help inform the priorities for each type of open space within each analysis area (i.e. the priorities will be where a shortfall has been identified).

If no shortfalls are identified, there will still be a need for developments to ensure the new population being created as a result of the development has sufficient levels of open space provision.

PART 12: POLICY ADVICE AND STRATEGIC RECOMMENDATIONS

12.1: Recommendations

The following section provides an overview on the key findings through the application of the quantity, quality and accessibility standards. It incorporates and recommends what the Council should be seeking to achieve in order to address the issues highlighted.

Recommendation 1

- ◀ *Adopt an approach to increasing the capacity of and/or enhancing existing provision*

Consultation highlights that in general, quantity and availability of open space provision is considered sufficient. In many instances survey respondents rate quantity and availability as being very or quite satisfactory.

Application of the provision standards highlights that currently quality, quantity and accessibility deficiencies exist in areas of the Borough for certain types of open space. However, in many instances these are being served or have the potential to be served better by other existing forms of open space.

The Provision Standards Summary (Part 11.1, 11.2 and 11.3) should help to inform the priorities and recommendations for each analysis area based on the specific current circumstances in that locality. These should be used in helping to guide and focus the future need and direction of open space provision across the area.

Recommendation 2

- ◀ *Recommended provision standards should be used to determine open space requirements as part of new housing developments.*

Increases in population will provide additional demand for the requirements of open space. New populations in many instances will warrant contributions towards open space. The quantity, quality and accessibility standards can help to inform decisions around these requirements and priorities for open space in a given area.

The quantity standards can help to calculate the amount of provision required as part of a new development. Using the accessibility and quality standards can then help to identify any opportunities for potential offsite contributions. However, in some developments an onsite contribution will still be required.

Linking to Recommendation 1, 3 and 4 it is important that developments consider the need for on and off-site contributions. New populations as a result of development will add to the use of existing provision which in turn will reduce the quality and lifespan and of existing sites and/or features (e.g. play equipment, maintenance regimes etc). This will lead to the increased requirement to refurbish and/or replace such forms of provision.

Recommendation 3

◀ *Recognise and promote multifunctional use and role of key sites*

Application of the provision standards within Part 11 highlights sites that help or have the potential to serve gaps in provision. Furthermore, there are several sites across Hounslow with a multi-functional role which serve the wider Borough and beyond.

The Council should seek to ensure the role and quality of these multi-functional sites through greater levels and diverse range of features linked to different types of open space. This is in order to provide a stronger secondary role as well as opportunities associated with other open space types (where appropriate).

This can also help to minimise the need for new forms of provision in order to address gaps in catchments or as a result of potential new housing growth developments. This may particularly be the case in areas where the space to create new forms of provision is not a viable option.

It should also help to avoid instances of small scale onsite contributions of open space. It is recognised that open spaces of a particular small size (below 0.2 hectares) hold less recreational use and value. The presence of additional smaller sites will also add to the existing pressures of maintenance regimes and safety inspections. It is therefore recommended that a minimum size guideline is used to determine if provision should be provided on or off site.

Recommendation 4

◀ *The need for additional cemetery and allotment provision should be led by demand*

No standards have been set for the provision of cemeteries. Instead provision should be determined by demand for burial space.

Provision standards have been set for allotments and can be used to determine future requirements of need arising from development. However, a more accurate method to determine the current need for such forms of provision can be informed by waiting list figures. Part 8 of the report provides further detail on this.

Longer term consideration to leasing or asset transferring the management of allotment sites should be given. Self-managed allotments tend to be more proactive in the onsite maintenance and repurposing of plots. This ensures waiting lists are up to date and plots not being used are reallocated at a quicker rate. The move to self-management of sites would also reduce the management responsibility and costs the Council currently has for provision.

Work would be needed to help establish allotment associations at all sites; as it is understood that there are only a few sites with an allotment society. However, a piecemeal approach could be used with those sites with a society being the first for consideration to self-management. Establishing a forum for the self-managed sites should also be considered as this will provide a useful network for the sharing of ideas, problem solving and as a collective voice to liaise with the Council directly.

12.2: Implications to developer contributions

KKP advocates the requirement for open space should be based upon the number of persons generated from the net increase in dwellings in the proposed scheme. We also promote the

LONDON BOROUGH OF HOUNSLOW OPEN SPACE STUDY

use of quantity provision standards (in hectares per 1,000 population) in calculating the open space requirements of new housing development.

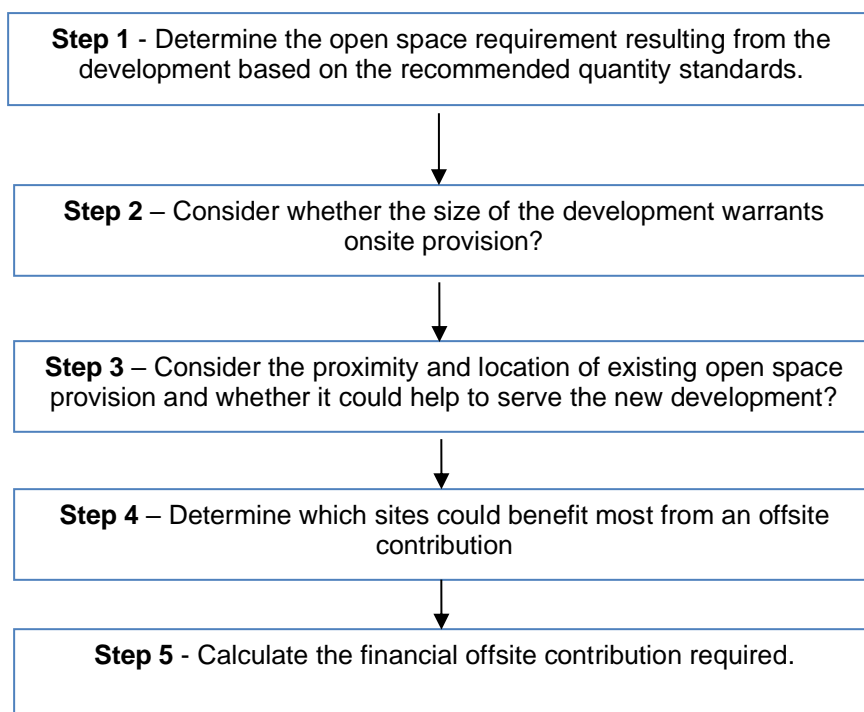
Flexible approach

A focus of this study has been to recognise the role quality and accessibility has in terms of open space provision. Future need should not just centre on quantity requirements of new residential developments. For instance, a new residential development may not warrant onsite provision but could warrant a contribution to an existing site within close proximity.

The flowchart (Figure 12.2.1) sets out the process that should be considered when determining contributions in terms of quantity, quality and accessibility. For larger scale developments, the provision standards should be used to help determine the requirements for open space provision as part of a development.

The figure below sets out the processes that should be considered when determining developer contributions towards open space provision.

Figure 12.2.1: Determining developer contributions



APPENDIX ONE: SURVEY CONFIDENCE LIMITS

Surveys are conducted simply because it is not practical or affordable to ask everyone. However, if we only ask a proportion of the population what they think how sure can we be that the same views are held by the majority?

LONDON BOROUGH OF HOUNSLOW OPEN SPACE STUDY

The following note provides a brief overview of various considerations that should be made and some of the terms that pervade the landscape of surveys – it does not cover all eventualities

Data confidence:

This is comprised of a confidence interval and a confidence level. In short it means that, for example, you are 95% certain that between 47.5% and 52.5% of people will vote for Party A at a forthcoming election. It is built up as follows:

Confidence interval

This is the + or - figure usually shown with data which, for example says, 63% (+/-3%) of respondents prefer Cola A, in this case you are fairly certain that the true answer lies somewhere between 60% and 66%. There are three key factors which determine the confidence interval, these are:

- ◀ *Sample size* – at its simplest, the larger your sample size, the more confident you can be that the answers reflect those of the population as a whole.
- ◀ *Percentage* – the higher the percentage of respondents giving a particular answer, once again, the more likely it is to be ‘correct.’ For example, if 99% say Yes then it is very unlikely that the answer for the population as a whole will be No.
- ◀ *Population size* – obviously that the closer the sample size is to the population as a whole the more accurate the data will be (see *Numbers* above).

Confidence level

This tells you how sure you can be that the above figures are correct – usually 95% or 99%.

What sample size is needed?

The above information can be used to determine what size sample is needed to provide data for an area or group and that you can say has a 95% (or 99%) chance of being within +/-2.5%, +/-5% etc. of the ‘true’ figure.

Sample size calculators are readily available and determine how many people you need to interview in order to get results that reflect the target population as precisely as needed (or conversely calculate the accuracy of the results you have achieved).

LONDON BOROUGH OF HOUNSLOW OPEN SPACE STUDY

Error margins and confidence limits for Hounslow population of 269,835

Example 1:

Determine Sample Size

Confidence Level: 95% 99%

Confidence Interval:

Population:

Sample size needed:

In the first example, you would need a sample of 599 people to have 95% confidence that any statements you say arising from the survey are within +/-4% of the figure that you quote; e.g. if 60% of respondents say they would like to see more open space the 'true figure' lies somewhere between 56% and 64%. The confidence interval and level can be changed and the necessary sample size will be produced from this table.

The online community survey for Hounslow received a return of 757 responses. This surpasses the example explained above.

Example 2 details the confidence levels and intervals for a return of 757 responses.

Example 2:

Find Confidence Interval

Confidence Level: 95% 99%

Sample Size:

Population:

Percentage:

Confidence Interval:

On this basis, with a sample size of 757 for the same population figure for Hounslow (269,835) the results will be within +/- 3.49 percentage points of the figure quoted e.g. if 60% of respondents say they would like to see more open space the 'true figure' lies somewhere between 56.51% and 63.49%.

It is not statistically recommended to use the findings of the survey on an analysis area basis. This is due to the confidence levels and intervals being too large to give any meaningful assurance in any statements that could be made. Consequently, statements are made across the Borough as a whole.

