

GREEN FLAG MANAGEMENT PLAN 2026

Watermans Park



London Borough
of Hounslow



Lampton
Services
Greenspace



Foreword

The London Borough of Hounslow has some superb greenspaces that everyone can be proud of. They are places where people can relax, enjoy nature, play, or take part in cultural and historic activities and recreation. They are essential for the health and well-being of our residents, and they are vibrant spaces that provide a borough-wide green infrastructure for our communities.

In Hounslow, we are committed to stimulating a strong and robust green recovery related to our Greener Borough Framework and Climate Emergency. The Council's Green and Blue Infrastructure Strategy plays a key role in delivering the Greener Borough Framework and sets out key priorities for our greenspaces in areas such as health and wellbeing, regeneration, climate change and nature recovery.

The London Borough of Hounslow considers the Green Flag Award process as a tool towards positively developing our greenspaces within this strategic framework and in partnership with our communities. It contributes to providing a vision, with clear objectives and priorities for how the Council and its partners would like to see greenspaces managed in future years.

This plan is not only the commitment from the Council to improve our greenspaces but is an important recognition of the support and commitment of the friends of parks, community groups, local clubs, third sector and partners who share our visions and work with us to respond to our green agenda.

Acknowledgements

This plan has been produced by the London Borough of Hounslow (LBH) Parks Team and Lampton Services Greenspace* (GS) with input from Friends of Watermans Park. In addition, it is important to acknowledge the great contribution from all interested groups for their commitment and dedication in supporting the development, promotion, and management of Watermans Park.

*Lampton Services Greenspace is part of the Lampton Limited Group and is a company wholly owned by London Borough of Hounslow with an aim of returning value to the Council representing a bold new ambitious approach.





Contents

Foreword	1
Acknowledgements	1
Purpose of the Plan	3
Where are we now?	5
Site Description & Facilities	5
Detailed History	7
Recent Achievements	11
Where do we want to go?	16
Green Flag Analysis	16
SWOT Analysis	17
How do we get there?	18
Meeting the Green Flag Award Criteria	19
A Welcoming Place	20
Healthy, Safe and Secure	20
Well Maintained and Clean	23
Environmental Sustainability	27
Biodiversity and Heritage	29
Community Involvement	31
Marketing	32
How do we know we have arrived?	36
Appendix 1 – Action Plan	37
Appendix 2 – Ecological Survey 2023	39
Appendix 3 – Annual Maintenance Work Schedule	40
Appendix 4 – Contract Performance & Key Indicators	42
Appendix 5 – Management Structure & Responsibilities	44





Purpose of the Plan

The Management Plan for Watermans Park has been prepared by LBH and GS with input from the Friends of Watermans Park. The plan is specifically developed for the individual site with a dedicated Green Flag action plan.

This plan has been developed following detailed assessment of the Green Flag award criteria and a comprehensive collaborative review of the existing uses, management, and maintenance of Watermans Park.

As part of the development of the plan, detailed consultation has taken place with the GS parks maintenance and management team, LBH officers and Friends groups.

The Management plan is a 'working document' that brings together all the information relating to Watermans Park and will be updated, revised, and annually reviewed. This plan has been developed based on the Commission for Architecture and the Built Environment (CABE) Space document "*A Guide to Producing Park and Greenspace Management Plans*" and the "*Green Flag Award Guidance Manual*" guidelines.

Policy & Strategic Context

Actions and aims within this management plan are both guided by, and relate back, to wider Council strategies. The development of parks and open spaces are a vital component of the Council's Corporate Plan 2022 – 2026. Our work during this period is focused on six priority ambitions for a borough that is greener, healthier, cleaner, thriving, safer, and livable. Green infrastructure contributes in many ways to helping us achieve these priorities.

A key approach of Hounslow Council is working under the concept of "One Hounslow" where services are delivered without silos, working for specific outcomes with several internal council departments, community groups, NGOs, and government bodies. Whilst also attracting external investment and developing new partnerships through the Regeneration Service's Business Case for Growth.

Parks and open spaces play an important role in the approach highlighted in the Council's Joint Health and Wellbeing Strategy with start, live and age well, preventing ill health, which in turn has an impact on reducing costs within the wider economy, the Council, and the NHS.

The Council's Equalities and Diversity Strategy 2023, created to improve equality, diversity, and inclusion - sets out an ambitious approach to target policies and funding to the areas which need them most to thrive. The strategy is based on three pillars - Equality by Place, Equality by Group, and Equality as Employer. Hounslow Council has committed to transform the opportunities and life-chances of communities in the borough's 30 most disadvantaged neighbourhoods.

The Council approved the Greener Borough Framework 2020-30 which seeks to provide a high-level framework to deliver on the Council's ambition and aspirations for the borough through enhancing our environment and reducing our use of resources. The framework is part of a wider ambitious green agenda bringing different people and organisations together to discover, engage, innovate, and deliver.





The adoption of the Green and Blue Infrastructure Strategy and Nature Recovery Plan are the pillar of the strategic framework for the development of our parks and open spaces and their management plans through the Green Flag Award process.

Useful Links:

- [Corporate Plan 2022-26](#)
- [Climate Emergency](#)
- [Green Infrastructure Strategy](#)
- [Greener Borough Framework](#)
- [Nature Recovery Action Plan](#)
- [Equalities, Diversity and Inclusion Strategy](#)
- [Hounslow Joint Health and Wellbeing Strategy 2023-2026](#)
- [Opportunity Hounslow: Our Business Case for Growth](#)

Parks Funding

The Council's Parks service is funded by a revenue budget for ground maintenance which are provided by our service providers, Lampton Services Greenspace, who maintain Hounslow's parks and open spaces, including allotments, cemeteries, trees, countryside and other workstreams.

In addition to this, the Parks and Open Spaces team sits within the Council's Environment Services directorate focusing on capital investment, contract and performance management, income generation and other initiatives. This is funded through core revenue funding and capitalisation.

Current capital funding has been allocated through a parks improvement programme, active since 2023. This funding covers project delivery and staff resourcing. Other capital funding is obtained via Community Infrastructure Levy (CIL); S106, the Council's Thriving Communities fund (local CIL), [Green Investment Fund](#), and other grants and initiatives. These are applied for annually or as necessary and are based on need and strategic investment required by both the Council and local communities.



Where are we now?



Site Description & Facilities

The park now has an area of approximately 1 hectare. It is positioned between the river and Brentford High Street and is to the east of Brentford town centre. The Thames Path runs through the park and at the western end of the site it continues along the river in front of the previous Watermans Art Centre. The park contains landscaped areas with wildflower beds, native shrub and tree planting, pathways, seating, a children's playground, an adult exercise area, a basketball hoop, table tennis, and social and performance areas as well as a cycleway



Site Information

Name: Watermans Park

Contacts: 020 8583 5555

Web: www.hounslow.gov.uk

Designation: Open Space

Size: 1.18ha

Byelaws: Visit the [Park rules and byelaws | London Borough of Hounslow](#) page to download

Access: Open access at all times

Transport: Train: Kew Bridge or Brentford Station

Buses: 65, 237 and 267

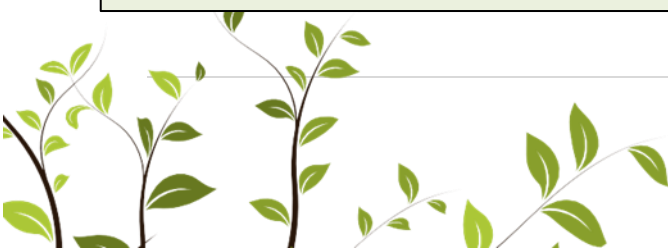
Parking: Payable parking available in Watermans Art Centre

Local Facilities: Playground, outdoor gym, basketball hoop, table tennis, social area, performance area, Thames Path, wildflower strips, cycleway

Address: High Street, Brentford, TW8 0BJ

Email: parcs@hounslow.gov.uk

Ownership: London Borough of Hounslow





Access to the park is provided at several points by graded pathways, including the westbound Cycleway 9 (C9), and stairs. These access points are from the High Street at both ends of the park and there is also a set of stairs and a ramp in the eastern half of the park. The entrance from the High Street adjacent to the previous Watermans Art Centre is accessible to vehicles (only for ground maintenance services including litter bin emptying and, emergency access).

The adjacent Thames River is tidal, with the riverbed largely exposed at low tides. The river at this location is split in two by Brentford Ait, a narrow island that is well vegetated, with the thick tree cover screening the urban development of Brentford from the green spaces of Kew. The main channel of the river is to the south of the Ait. On the opposite bank, beyond the Ait is a towpath and the Royal Botanic Gardens, Kew. The gardens are a World Heritage Site (WHS) and a WHS buffer zone extends to the high-water mark by Watermans Park.

Watermans Park is designated as a Local Open Space (No. 57) in the Hounslow Local Plan. The area of riverbed exposed at low tide is designated as Metropolitan Open Land and the river as a Site of Importance for Nature Conservation. The entire site is within the Thames Policy Area.

Until recent years many boats including derelict and wrecked craft were moored parallel to the park and foreshore pathway, up to three abreast, with boats tethered to existing piles and to the foreshore. Most of these craft have now been removed and works have commenced to construct new moorings alongside the park following planning consent granted in 2016 and subsequently updated in 2021. As well as new moorings the planning consent also required landscaping improvements in the park.



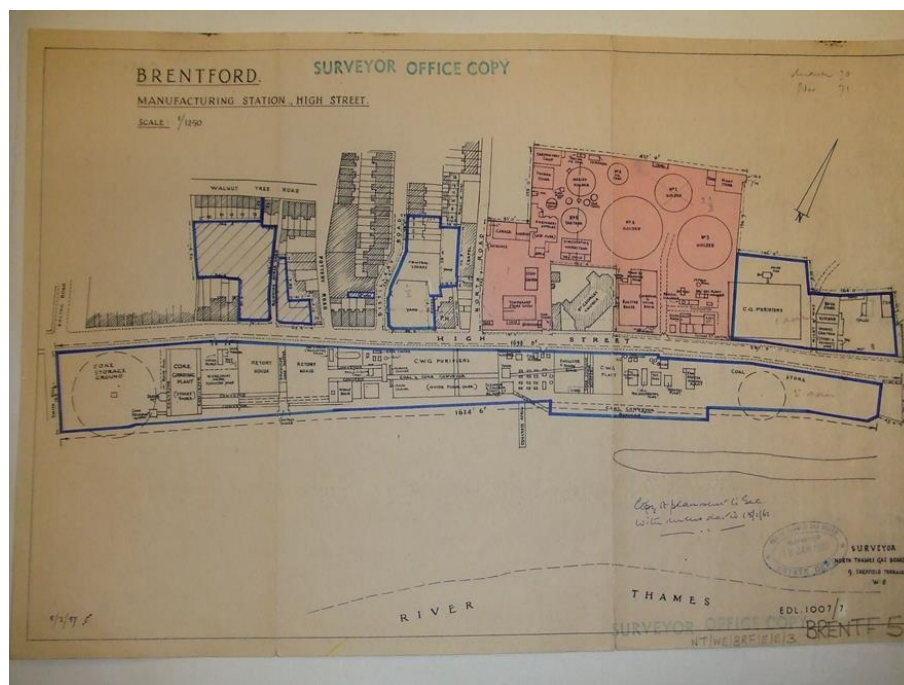


Detailed History

Watermans Park occupies what was once part of the Brentford Gas Works with the foreshore used for delivery of coal by barges and is adjacent to the River Thames. The park was opened in 1983. The remainder of the gas works site was redeveloped for housing and the Watermans Art Centre.

In 1820 an engineering firm Messers J & G Barlow secured a contract to light the turnpike road between Kensington and Hounslow (hoping to deter highwaymen along the road) and acquired a quarter of an acre of land (1000 sqm) with 115ft (35m) of riverside in Brentford for their works. This was to become one of the very first gas works in the world. Before the works were completed a new proposal was made to form a statutory company to take over the undertaking which would have powers to undertake street works and benefit from limited liability, benefits that were not available to J & G Barlow.

The plan below shows the extent of the gas works in 1962.



After the passing of an Act of Parliament in 1821 the first meeting of the Brentford Gas Company was held at the Roebuck Inn in Turnham Green. The new venture was steered by chairman Felix Booth of the well-known Booths Gin Distillery. Brentford Gas Company first supplied the gas for the road lights and to homes in a wide area including Brentford and Turnham Green, then Hammersmith and Kensington. The services continued to grow and by the late 19th century covered a wide area of West London.

By 1926 when the company was taken over by the Gas Light & Coke Company, they were serving an area of 130 square miles stretching from Hammersmith to Windsor and from Richmond to Edgware. Further expansion of the works meant the Royal Brewery at 21 – 27 High Street was demolished in 1926.





There had been a brewery on the site at least since 1735. By 1830 it was owned by Felix Booth and the name changed to the Royal Brewery in 1832 following a visit by King William IV.



The Royal Brewery, Brentford High Street with the Brewery Tap pub adjoining (Chiswick Local Studies LB Hounslow)

When the Royal Brewery site was taken the works dominated the eastern end of the town. In his book “And so to Bath” published in 1940 Cecil Roberts wrote “... the entrance to Brentford is like the gates to Hell. Already the gasworks and coal yards are there for stoking the punishing fires ...”

World War II brought with it the constant fear that the large gas holder, a landmark for miles around, would be bombed. Luckily, the holder and works remained unscathed. However, even on the darkest of blackout nights on a darkened trolley bus, a traveler always knew they were passing through Brentford High Street because of the familiar smell of the gas works.

On nationalisation in 1949 the Gas Light & Coke Company became part of the North Thames Gas Board until its closure in 1963.

Before landscaping improvements to the park in 2021 / 2022 took place there had been some improvement works in the 1990's. A ramped access point was introduced as part of community arts project led by metalwork artist Shelly Thomas, based at the Forge at the Water & Steam Museum at Kew Bridge. Work with young people and a series of public meetings guided the designs for an entrance arch with symbols and herons on steel columns.





The entrance arch and herons remain important features in the newly re-landscaped park.



There are still visible signs of the gas works in the park: pipes in the north wall, blocked entrances to tunnels under the road. And until very recently when works on the new moorings commenced, timber piles and dolphins in the river some with iron caps with the motif GLCC BD 1930 (Gas Light & Coke Co). These caps have been saved for display in the park.



An example of an iron cap saved for display in the park.





A visible example of the industrial history of the site

A heritage trail between Kew Bridge and Brentford Bridge passes through the park and two information boards have been installed celebrating the history of the site and the river.

Sources:

Eric J Kenward, Chairman, Brentford & Chiswick Local History Society, Notes on the Early History of the Brentford Gas Company

David Shailes, Brentford Voice, Brentford Local History Month May 2022

Eddie Manday, undated article in the Hounslow Chronicle



Recent Achievements

Achievements 2025

- Uneven Thames Path resurfaced providing a more accessible path
- Support citizen science projects in the park to support the Councils Nature Recovery Action Plan.



- Mental Health Awareness Week (May 2025): creation of a wellbeing playlist; in Autumn 2025
- Brentford Football Club sponsored a bench as part of its “talking is the best tactic” campaign [Brentford create space for mental health conversations with community benches | Brentford Fc | Brentford FC](#)
- Gardening Club established with regular Saturday afternoon sessions in 2025





Achievements 2024

- Installation of a mural along the north wall by local artist



- Storage container installed for Friends to store event materials
- New suitable fencing by exits to the children's play area and behind the basketball hoop to reduce the risk of young children crossing the cycle track.



- 2 Heritage Trail information panels installed: Brentford Ait, Brentford Gas Works.
- Friends Summer Bandstands over 6 Saturdays.
- Installation of storage container for Friends equipment.
- Damage to wooden retaining boards by Thames Path repaired.
- Basketball hoop net replaced.
- Community garden online survey.

Achievements 2023

- Restoration of timber boardwalk along the river which had been closed for many years.
- Installation of new benches along the river.





- New parks signage at both entrances on the ends of the park.
- Friends summer bandstands over 6 Saturdays part of LBH summer of culture.



2021-2022 Watermans Park Masterplan

The 2016 planning consent was granted for the construction of moorings and a car park / facilities building which also included improvements to the park. Those plans for the park had to be updated because in 2019 the westbound C9 cycle route was approved to pass through the park. In 2021, a landscape architect was reengaged by the Council to update the 2016 landscaping plans to reflect the planned route of C9.

In June 2021 the Council's parks team and the Friends of Watermans Park engaged with two local primary schools - Green Dragon and St. Paul's. Their pupils were asked to give ideas about their vision for the playground. Residents were also given the opportunity to share their views through an online questionnaire. Updated plans were then presented to an open meeting in July 2021 and received planning consent on 1 October 2021.

- The redevelopment of the park was funded by CIL, other council sourced funds, the marina developers TRM, and TfL funded C9.

Landscape improvement works included building C9 and other features:

- A new pedestrian ramped access at the eastern entrance was built to accommodate C9. A low hedge separates C9 from the pedestrian paths in the park. C9 is close to the northern wall and lamp column lighting has been installed to enable safe night-time use.
- Between C9 and the wall there has been new tree planting along with native woodland plants.





- The timber board walk by the river, which had been closed off for safety reasons for many years, was to have been removed under the 2016 plans but has now been retained. Extensive restoration work starting in late 2022 will give back some welcome space to visitors to the park.
- Site-wide several trees originally intended to be removed were saved and there has been additional planting of trees. New planting throughout the park.



- A new children's play area, a basketball hoop for older children and exercise equipment for adults of all ages including seniors and wheelchairs were added reflecting the survey results. There is to be a drinking fountain by the play and exercise area in 2023.
- A social area at the west of the park includes picnic benches, a table tennis table and space for a pop-up vendor in the future.



- Throughout the park there are wildflower terraces which were spectacular in 2022 and 2023.



- There has been spring bulb planting by children from the local primary schools in Autumn 2022, their painted bird boxes have been installed in trees.



- New seating, some under pergolas, has been installed throughout the park.
- A larger pergola shelters a yoga /performance space with access to an electricity point. The Friends held a series of open mics on weekend afternoons in July 2022. Performers are protected from strong sunlight by a removable canopy.





Where do we want to go?

Green Flag Analysis

The ambition for LBH in partnership with GS and community groups is to continue to work to improve standards and develop parks and opens spaces strategically according to corporate priorities and local needs.

A clear connection between the criteria identified by the Green Flag Award Scheme and the main points gained from the SWOT analysis and site review completed with the Friends of Watermans Park has helped to establish a comprehensive management plan for this site.

The management plan process is described below the section “How do we get there?”.

Consultation & Co-design

The Council has a strong partnership with the Friends of Watermans Park, co-designing the future of the park together in most initiatives and opportunities.

Continuous dialogue is in place through regular communication and a quarterly Hounslow friends forum where Friends discuss wider issues and learn from each other to improve overall management standards.

LBH engage annually with Friends groups and community groups in compiling these management plan and their progress.

Ward Councillors and the Lead Cabinet Member for Recreation, Public Spaces and Parking are regularly updated on parks development projects and strategies.

Ward Councillors and the Lead Member for Recreation, Public Spaces and Recreation are regularly updated on parks development projects and strategies.

Liaison with the Hounslow Met Police and the Councils Enforcement Team on matters around ASB and public safety.





SWOT Analysis

A SWOT analysis is a management critique to identify Strengths, Weaknesses, Opportunities and Threats to help shape future improvements.

<p>STRENGTHS</p> <ul style="list-style-type: none">• A well-used open space essential for the surrounding community• Play areas and sports facilities (table tennis, outdoor gym, basketball)• Improved access suitable for all visitors including cyclists• Active Friends group• Active stakeholder collaboration• Active community use• Park lighting for C9• Restored boardwalk giving views of the river.• New parks signage• Mural to deter graffiti• Storage container for Friends	<p>WEAKNESSES</p> <ul style="list-style-type: none">• Friends to review promotion of events to attract a wide variety of the community through diverse events• Regular graffiti• Overuse of park as only active river access• Water connection was not possible• Failed planting – trees and wildflower strips
<p>OPPORTUNITIES</p> <ul style="list-style-type: none">• Friends to establish community garden.• Regular community events using event space.• Gardening club• Friends group to grow its active membership.• Pop up vendor for refreshments• Undertake FIT surveys to support biodiversity monitoring• Repurpose failed wildflower meadow with a project with local school	<p>THREATS</p> <ul style="list-style-type: none">• Anti-social behaviour and graffiti• Hot dry summers pose a particular threat to new planting in the park, watering and care of trees will be particularly important.• redevelopment of arts centre on the park• Active management of wildflower areas• Funding for community garden





How do we get there?

Vision and Objectives

Vision for Watermans Park:

“The Friends of Watermans Park's principal purpose is to help protect, conserve and enhance Watermans Park, its environs and access to the River Thames for the enjoyment of local residents and visitors.”

Key objectives for Watermans Park are:

- To continue to work closely with the Friends of Watermans Park and the wider community who use the facilities to adequately maintain and improve the offer.
- To ensure that Watermans Park is a place that is secure, safe to use and is clean and well maintained.
- To ensure that the management of the landscape maintains the heritage character of the park.
- To ensure that the park is promoted and managed in order to provide a high-quality service for the people using it.
- To continue to encourage and promote community involvement in the management of the park.
- To ensure that the management of the park protects and enhances the biodiversity of the site and borough.
- To promote health and wellbeing.
- Creating opportunities for connecting green spaces to wildlife and increasing the boroughs ecological resilience and connectivity.



Meeting the Green Flag Award Criteria



Management of Watermans Park

This sets out guidelines and general principles to be followed in delivering the vision and objectives outlined above.

Management of the open space needs to deliver high standards of maintenance of the soft and hard landscaping of Watermans Park within existing revenue budgets and through capital infrastructure funding opportunities.

Delivery Partners

The Council works proactively with the Friends of Watermans Park in consulting with local people regarding their views of the facilities and any impact that is made on their lives. Continuing this relationship is a very high priority for the management of the open space.

GS are responsible for maintaining all the parks and open spaces within the LBH Parks Service. Maintenance is carried out by the contractors' operatives who have the necessary skills to achieve high and consistent horticultural standards.



A Welcoming Place

The following management priorities help ensure that Watermans Park continues to be a welcoming place.

Entrances

GS regularly manage and maintain all site entrances to ensure they remain accessible for all, secure and free from any obstructions. This includes gate and surface maintenance where required, clearance of leaves, and gritting during icy conditions. As a general policy our parks are not locked at night, as there is evidence that this attracts antisocial behaviour.

Signage

Park signage is kept clean and regularly inspected, any repairs are carried out promptly by GS. Our parks have a variety of signage, including welcome signs at main entrance points, with general site information, community event boards, interpretation signage, and enforcement and warning signage where required. For more information, please refer to the “Marketing Section” below.

Visibility

Where suitable vegetation is managed by GS to help improve site lines for the personal safety of park users across the site. Lighting in our parks is minimised and only considered along main pathways. This approach is generally supported, as there is evidence that lighting can create a false sense of safety, and in fact can attract antisocial behaviour. This approach is supported by Parks for London, the police, and other organisations, developing strategies to help tackle Violence Against Women and Girls (VAWG).

Graffiti Removal

As a part of our aim to make the borough safe, green, and clean we are committed to reducing and removing graffiti. The site will be regularly inspected for graffiti. All graffiti will be removed within 7 days of notification, where the graffiti is racist or offensive it will be removed within 24 hours of notification.

Healthy, Safe and Secure

The following management priorities help ensure that Watermans Park continues to be a healthy, safe, and secure place.

Health & Wellbeing

We recognise the benefits that our green spaces can make to the health of our residents.

We are committed to developing active environments that enhance leisure, sport, physical activity and play opportunities in priority areas.

The Councils [Playing Pitch Strategy](#) (to be updated in 2026), identifies needs for sports facility improvements and sets out priority projects for delivery in partnership with key stakeholders. We work with Council services to ensure that our approach supports the broader Council strategies around health and wellbeing and together with Leisure Services provided by Lampton Leisure, Traffic and Transport, Public Health, Contingency Planning, Community Development team and the local community we aim to deliver these improvements.





Useful Links:

- [Hounslow Joint Health and Wellbeing Strategy 2023-2026](#)
- [Data Hub](#)

Better Points

BetterPoints is an app that rewards residents for getting active. Activities such as walking, cycling, running and wheeling earn users BetterPoints that can be exchanged for Highstreet vouchers or donated to local charities. You can also earn BetterPoints from attending our Healthy Hounslow services. Find out more [here](#).



Healthy Hounslow

Healthy Hounslow is a partnership between several organisations supporting people in leading healthier lifestyles; to become more active, eat well and stop smoking. The partners that make up Healthy Hounslow are Hounslow Council, West London Trust, Feltham & Bedfont Primary Care Network, MoreLife, Maximus/BeeZee and Lampton Leisure. The services and support offered by Healthy Hounslow are: Smoking cessation, Health and wellbeing coaching, Healthy weight management, Exercise on referral, Cook and eat sessions, and Community NHS Health Checks.



You can find out all about Healthy Hounslow at our website www.healthyhounslow.co.uk

Lampton Leisure

Lampton Wellbeing delivers a wide range of innovative and essential health programmes across the borough to promote physical activity. From exercise referrals and strength-building classes to dementia support and digital fitness hubs, we help people of all ages live healthier, happier lives. We combine expert knowledge in physical activity, evidence-based medicine, and sustainability to create programmes that truly make a difference — empowering individuals, strengthening communities, and building a healthier future for Hounslow.



Site Safety

All GS staff and contractors play an important role in terms of a visible staff presence. All are uniformed and where necessary will wear highly visible clothing. All works will have been risk assessed to ensure the highest level of public safety.

LBH and GS maintain close oversight and management of all subcontractors and other agencies working within our parks and open spaces, adhering to CDM regulations and relevant license agreements.





Control of Dogs

Most dog owners act responsibly and keep their pets under control. However, the Council continues to receive comments and complaints from residents regarding the behaviour of some dogs and the actions of a minority of irresponsible dog owners within parks and open spaces.

To address these ongoing concerns, the Council carried out a public consultation during 2025 to gather residents' views on a range of dog control issues. A report summarising the findings from the consultation was presented to Cabinet in late 2025. This resulted in the decision to introduce a dog control Public Space Protection Order (PSPO).

The PSPO includes seven key requirements and restrictions for dog owners and dog walkers. Some of these were previously in place under previous regulations and have now been consolidated in this single, update order.

For more information on the status and findings from the dog PSPO consultation please see the webpage [here](#).

Supported by a borough-wide campaign encouraging dog owners to [Take The Lead](#), the new PSPO will be enforced from 1 March 2026. It sets clearer expectations for dog walkers and gives the Council authority to issue on-the-spot fines to those who don't follow the rules.



Watermans Park welcomes responsible dog owners apart from the fenced play area which is a dog exclusion zones, and this has been reflected in the PSPO.

Community Safety

Hounslow Community Safety Partnership (HCSP) is responsible for reducing crime, disorder, and substance misuse in the London Borough of Hounslow.





Along with other supporting partners, HCSP brings together key local agencies including:

- London Borough of Hounslow – Safer Communities
- Metropolitan Police Service (Hounslow Division)
- Hounslow district of the National Probation Service
- Hounslow NHS Trust
- London Fire and Emergency Planning Authority
- [Community Safety](#)

The Council's Enforcement Team have responsibility for overseeing Community Safety in the boroughs' parks and open spaces. They walk through parks to show presence and work with the Parks Team and GS to target regular occurrences of ASB. Occasionally a joint task force operation including those above is required i.e., rough sleeping, food dumping, drinking and drug misuse.

The Council is introducing a new enforcement team in March 2026. The new team will be focusing on fly-tipping and littering, noise complaints and enforcing Public Space Protection Orders (PSPOs). They will also be engaging with local communities and educating residents on how to dispose of waste and recycling correctly.

The team will be equipped with hand-held devices allowing them to identify, capture, report and respond to issues in real-time and reassure residents that issues are being identified and dealt with. Investment in new AI technologies and SMART sensors will also be developed to enable fast and targeted responses.



Enforcement officials on a walkabout

The Parks Team has established a Violence Against Women and Girls (VAWG) Steering Group in partnership with the Metropolitan Police. The group meets regularly to review hotspot areas across Hounslow's parks and open spaces that have been identified as priorities within the VAWG agenda. Together, they assess recommendations, explore solutions, and coordinate ongoing projects and work programmes aimed at addressing these issues.

A broad range of stakeholders participate in the group to share current concerns, highlight priority areas, and discuss operational capacity. Representatives include the Met Police VAWG Lead for Hounslow, Police Intelligence Analyst, Parks Team, Safer Communities, Lampton Greenspace Countryside Team, Rough Sleeping Unit, Domestic Violence Reduction Unit, and Gunnersbury Park.





Some of the actions from the steering group have led to:

- Increase police patrol in priority parks
- Community engagement with local residents and thereby increasing natural surveillance
- Removal of hiding spots and management of overgrown vegetation
- Creation of a Safety in Parks poster (in conjunction with the police and their reporting procedures)
- Raising awareness on reporting rough sleeping and supporting rough sleepers to reduce stigma
- Insight and lessons learned sharing
- Deployment of Safer Patrolling officers in Priority parks
- Additionally, they contribute to the WA – BCU (West Area – Borough Command Unit) meetings, which include boroughs of Hounslow, Hillingdon, and Ealing.

Staying safe in our parks

It's important that we all feel safe in parks and open spaces. If you're worried about anything in Hounslow parks, let us or the police, know:

- In an emergency, always call 999.
- If it's not an emergency, call 101 or the easiest way to contact us is online at www.met.police.uk
- To report safety concerns in public places without giving your name (anonymously) visit www.met.police.uk/notices/street-safe/street-safe
- To report ongoing concerns, get in touch with us at customerservice@hounslow.gov.uk

We are working with the police to keep your neighbourhood safe. If you want to find out more and meet your Safer Neighbourhoods team, visit www.met.police.uk/area/your-area



Well Maintained and Clean

The following management priorities are designed to ensure that Watermans Park is clean and well maintained.

Grass Maintenance

GS employ several different management approaches to maintain grass areas within our parks and open spaces. Generally, grass areas are managed either as amenity grassland, rough grassland, or as wildflower meadow. Within many of our larger parks, the grass is left uncut as part of the annual No Mow May campaign which is also referred to as [Hounslow's Natural Summer](#).

Watermans Park consists of amenity grassland and wildflower meadow strips.

Amenity Grassland

Amenity grassland consists of areas used for general recreation, and formal and informal sports, and can include wide-open spaces or those areas planted with trees and shrubs. These areas are regularly cut during the growing season, to ensure they can continue to be used for recreation throughout the year (see Appendix 3: Annual Maintenance Work Schedule). Grass edges, whether they are against paths, fences or walls will be cut at the same time as the rest of the grass using trimmers in most areas.





Wildflower Meadows

Wildflower meadows are areas which are actively managed and promoted as wildlife areas. They are suitably prepared, sown and protected by GS, to ensure they establish and flourish to help promote pollinators, and to increase the biodiversity within the open space.

As part of the council's commitment to invest in green infrastructure, GS help identify additional areas within our parks and open spaces, which can be managed as wildflower meadow, where suitable and in consultation with Friends groups and other stakeholders.



Trees

Trees are an incredibly significant feature in the borough's parks and open spaces. They provide a variety of benefits not only to visitors but to the overall environment of an area, creating habitats and providing natural shade. They form an important part of the borough's green infrastructure, and this is reflected within the council's [Green Infrastructure Strategy](#).

Tree Maintenance

To ensure that trees continue to contribute to the landscape it is essential that we think about their health and safety. Trees within parks and open spaces are subject to inspection by suitably qualified and experienced GS Arboriculturists.

This is to identify and remedy any unacceptable risks to people using the sites, or the removal of trees that are extensively decayed compromising their structural integrity. Tree pruning is only carried out where necessary for risk management purposes or where formative pruning is necessary; this approach allows Hounslow's parks to retain a natural landscape with well-formed specimens.

Hounslow Council works closely with Friends, Councillors and Lampton Services Greenspace tree team to consider the tree population within Watermans Park to make improvements and ensure that there is continuity in the way that the trees are managed.

Tree Planting

Between 2020 and 2024 the Council set ambitious tree planting targets, successfully planting over 25,000 new trees and whips in parks and open spaces. This formed one of the main ongoing targets set out in the [Green Infrastructure Strategy](#).

As part of the masterplan over 500 trees and whips were planted in Watermans Park.





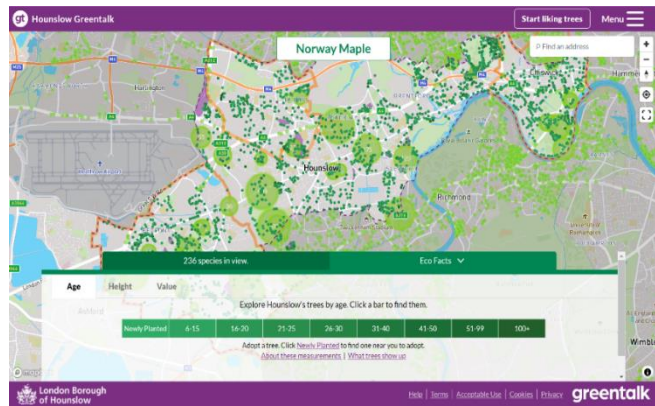
Greentalk

Hounslow Greentalk is an innovative new platform developed as a bespoke resource for Hounslow residents. It has lots of clever features to help explore public trees and make a positive difference to the environment. The platform provides a unique opportunity for Hounslow residents to adopt newly planted trees and help their borough become greener.

Anyone who wants to find out about trees in the borough can use the Greentalk interactive map to explore their area through a tree focused perspective.

Other features include but not limited to:

- Adopting a tree
- Watering notifications
- Green walks
- Tree giveaways



Over 120,000 trees have been mapped, and around 33,000 can be liked by registered users. Liked trees are saved as favourites and can be accessed through the user profile.

The data used to display all the information on Hounslow Greentalk is derived from the council's tree partners who manage the trees in the borough and regularly provide up-to-date information to keep the system as relevant as possible. If a resident is aware of a problem with a tree, Hounslow Greentalk can help them report the exact tree with the right information to the relevant tree partner.

For more information, please visit [Hounslow Greentalk](#)



Wetland Management

Streams and Rivers

Watermans Park is situated alongside the River Thames. The Port of London Authority (PLA) is responsible for the management of the tidal Thames and its riverbanks. As such we work in close partnership with the PLA to ensure the safety and good management of our open spaces which are situated along its banks. For more information on the PLA, please visit their website [here](#).

The new timber boardwalk was recently restored in 2023. This has helped ensure the safety and use of this stretch of the official River Thames Path.

Cleansing

The collection of litter is extremely important in maintaining the appearance of Hounslow's parks and open spaces and has a direct effect on how people treat and respect the site. Litter is collected and bins emptied daily by the GS cleansing crews. Any occurrences of fly tipping are cleared by GS within 48 hours of notification, and we work closely with the Enforcement Team to investigate fly tipping issues where possible.

Park Furniture & Fittings

GS ensure that all furniture is clean and will check benches, noticeboards and bins on a regular basis. Items will be cleaned when necessary. Any necessary repairs will be reviewed, and funding opportunities explored with the aim of rectification as soon as possible.

Playgrounds

All playgrounds are visually inspected at a minimum of once per week (based upon site usage), a recorded quarterly operational inspection, and an annual inspection carried out by an independent inspector to ensure the playground meets ROSPA standards. Any hazards identified are dealt with accordingly and where necessary equipment will be cordoned off whilst repairs are scheduled.



Pathways & Hard Surfaces

Pathways and hard surfaces will be kept clean with litter and leaves removed. Hard surfaces will be maintained in a weed free state. Paths will be kept in a good state of repair and all paths being inspected annually. Any necessary repairs will be reviewed, and funding opportunities explored with the aim of rectification as soon as possible.

Buildings & Structures

There are no buildings within Watermans Park, however the new timber boardwalk is listed as a structure. Also, a large pergola performance space with access to an electricity point was created in 2022 as part of the redevelopment of the park. A storage container was installed in 2024 for the Friends to store items for the park.





Environmental Sustainability

The following management priorities outline how Watermans Park is managed in a sustainable way.

Litter Recycling

All litter is taken to Transport Avenue, the West London Waste Authority site within Hounslow borough. It is then loaded onto trains and taken to an energy waste site in Avonmouth, where it is used as a renewable energy source.

Green Waste Recycling

All green waste is either reused or recycled.

- Grass clippings are spread and left in situ in the park.
- Wood chippings are used on flowerbeds to provide a compost and weed control.
- Other green waste (shrub pruning etc.) is taken to Transport Avenue Waste Disposal Site, where it is then transferred by road to a composting facility for processing.

Pesticides

The use of glyphosate-based herbicides to treat weeds was stopped in 2020, to help promote biodiversity. However, removing the use of herbicides has presented operational challenges, as herbicides have always been considered a cost-effective solution and less labour-intensive results.

Following extensive discussions, it was agreed by Cabinet that glyphosate-based herbicides would be reintroduced for the 2025 season. The reintroduction was necessary due to the increasing prevalence and density of weed growth, the impact of weeds on pathway safety and infrastructure, and the limited effectiveness of manual removal alone. This decision is due to be reviewed again in 2026.

Peat Use

GS do not use peat, or any peat-based products within Hounslow's parks and open spaces.

Infrastructure

GS follow the Council's procurement guidelines when sourcing replacement or new infrastructure items. This includes prioritising products made from recycled and environmentally and sustainably sourced materials wherever possible and financially feasible.

For example, using trees felled onsite for seating and fence work, and sourcing fibreglass heritage litter bins to replace ironwork bins. Products made from tropical hardwood and other unsustainable sources are not used.





Fuel, Fleet & Power Tools

Fleet

As part of an ongoing trial within the Lampton group, the GS fleet use an alternative diesel product, Hydrotreated Vegetable Oil Fuel (HVO). HVO meets OEM fuel specifications and is certified to be a 90% CO2 saving on normal diesel. This efficiency is better than current electric vehicles and is a great stop gap to future technologies given the age of the HGV fleet. It is hoped that a switch to HVO will help GS transition to low carbon technologies in a systematic way, giving time to manage various operational constraints by limiting early adoption of electric vehicles.



Power Tools

GS are continuously trialing the use of electric power tools as alternative to 2 stroke machinery. They currently utilise a number of battery powered trimmers and blowers and continue to evaluate the effectiveness and development of technology and replacing older traditional machinery as it reaches end of life.





Biodiversity and Heritage

We manage our parks and open spaces by ensuring that where possible we maintain a diverse range of age, species and structure in the canopy, understory and herb layers and aquatic spaces. This is achieved by:

- Managing site specific habitats such as acid grassland, mature veteran trees, rivers, ponds, and woodlands.
- Supporting the borough's wildlife through interventions such as birds and bat houses, stag beetle loggeries, aquatic ledges and educational signage.
- Enhancing existing aquatic and terrestrial habitats to support a diverse range of flora or fauna.
- Exploring opportunities to create new habitats such as wildflower meadows, native hedge planting, aquatic ledges, and copses. An ecological survey was conducted in 2023, see Appendix 2
- Consider introducing sympathetic mowing regimes where suitable, for example leaving areas of rough grassland around trees.
- Recognising the effects of climate change e.g., drought, wildfires, floods, disease, biosecurity.
- Prioritising sustainability through resilient planting e.g., drought tolerant trees and plants.
- In 2021 LBH commissioned a baseline report of invasive species Parks and open spaces portfolio, surveying 195 sites. This information was used to procure a specialist contractor to remove targeted species over a five-year period beginning in April 2025 and running for 5 years. This will seek to eradicate: Japanese Knotweed, Giant Hogweed, and floating Pennywort, and provide advice on how to deal with Himalayan balsam. The initial round of treatment has been very successful, and we have already seen a reduction in the size and viability of INNS patches.
- Biosecurity – Anyone responsible for plant supplies must ensure that all plants and associated soil are supplied free of pest and disease at all points in the supply chain. To achieve this, GS consider the latency period and life cycles of all pests and diseases. Special attention to biosecurity is given to imported stock.
- GS procurement will always prioritise suppliers that are able to demonstrate a supply chain audit trail (for example, are part of a recognised Plant Health Assurance scheme) that ensures plant material sourced within the UK is under a regime of biosecurity-aware production and follow nationally agreed good practice guidelines.
- The Nature Recovery Action Plan (NRAP) is a part of Hounslow's Greener Borough Framework and was adopted in 2023. A stakeholder board -Nature Recovery Stakeholder Board (NRSB) was launched in February 2024 and is led by the Head of Service with quarterly meetings held in various locations across the borough.





- Site of Importance for Nature Conservation (SINCs)

During 2025 LBH identified the need to review the current ecological status of its 47 Sites of Importance for Nature Conservation (SINC) as part of the actions set out in the Nature Recovery Action Plan (NRAP 2023–2028). Although these sites have been assessed in the past, with the most recent assessments carried out in 2012, little information exists about their current condition from which to highlight opportunities to protect and enhance biodiversity value.

Therefore, an ecological appraisal of all 47 individual SINC across the borough was commissioned to establish an updated baseline of habitat types at each site, and their condition. This was conducted by Ecosulis, in the form of a Preliminary Ecological Appraisal (PEA) comprising of the following:

- Desk-based review of existing ecological information provided by LBH and local record centre data, alongside open-source datasets, to identify any legally protected or notable species, and/or habitats that may be present; and
- A field survey to determine current habitat types present on the Site, using the latest UK Habitat Classification (UKHab) methodology and incorporating an assessment of habitat condition; and
- Preparation of a concise report summarising the findings of the desk study and field survey, and details of conclusion and recommendations.

The purpose of the PEA is to identify early opportunities for enhancement to improve biodiversity value at each site, and, where possible, highlight protected and notable species or habitats which may benefit from or be negatively impacted by habitat interventions at the Site. We anticipate all the PEAs on Council land will be available to view via the Council's website by early summer 2026.



Methods used by Ecosulis whilst surveying sites





Community Involvement

Parks and open spaces foster community cohesion by serving as venues for events, volunteering, and shared activities. Involving residents in the management and decision-making processes of parks ensures that these spaces reflect community needs and values, encourages a sense of ownership, and strengthens stewardship. Active participation not only improves the sustainability and relevance of green spaces but also builds stronger, more engaged communities.

Friends Groups

The Council works closely with the Friends of Watermans Park and encourages them in their efforts to apply for grants and to organise volunteer days and events. We also engage with other community groups and third parties to encourage and ensure opportunities for the needs and requirements of a diverse borough population.

The Parks Team provide support for applications to the Council's Thriving Communities Fund. More information about the scheme can be found on the Council webpages [here](#).

The Hounslow Friends of Parks Forum holds quarterly meetings and act as a support network that provides networking opportunities for local groups. The forums are facilitated by [Habitats & Heritage](#) who are a west London based organisation who help support new and established Friends Groups.

The Parks team engage with people from a wide range of backgrounds to increase representation and improve access to our green spaces, while also supporting placemaking and a stronger sense of belonging through engagement. This has included working with groups such as the Care Leavers team, the Youth Council, refugees and asylum seekers, Duke of Edinburgh students, faith groups, attending careers fairs at West Thames College, and collaborating with EDI networks and local educational institutions.

Friends of Watermans Park

Formed in 2019, the Friends of Watermans Park have enthusiastically pursued their vision to improve the image of the park for the local community. With a strong focus on making the park safe and supporting the needs of the local community they have built positive and active relationships with the local community, Council departments, the police, and other stakeholders.

The Friends group also help shape the Council's strategic improvement plans via ongoing discussions to ensure they are appropriate for the users of the park. The Friends have recently supported the Council's high-level vision to make the park one of best in the borough by assisting with resident engagement exercises in the development of the Watermans Park masterplan.

The local residents who have formed the Friends Group envisage a vibrant community amenity which can host community events as well as an attractive recreational area by the river Thames for all to enjoy.

The friends monitor the park every day throughout the year to ensure that all issues are reported quickly to the council so that prompt remedial actions can take place which benefits the local community.

To find out more about Friends of Watermans and how you can get involved visit:
[Home - Friends of Watermans Park](#)





Volunteering

The Council and GS work with the public to inform, educate, and volunteer in managing habitats through event opportunities and specific projects such as school planting in green spaces, green gyms, tree planting and habitat surveying. Community involvement and engagement in nature conservation projects helps to increase the health and wellbeing of our residents.

The GS Countryside Team help manage and coordinate several volunteer groups across the borough. More information can be found on the Parks Hub webpages [here](#).

In September 2024 the Council awarded London National Park City funds from its Thriving Communities Fund to establish a ‘ranger’ network in the borough. These rangers have the ability to apply for the small grants programme, allowing them up to £1000 of immediate funding to run localised projects. They also join a network of other rangers in educating, supporting, and influencing nature-positive behaviour especially in young residents. Examples of these projects include [Heron Way wildflower planting](#), [Heston Pocket Gardens](#), [Poetry in the Park](#) and [Accessibility to Nature](#), all of which can be found on the LNPC [website](#).



Marketing

Promotion and marketing of Watermans Park is carried out by a range of measures to ensure that local people and visitors to the borough are aware of the facility.

Entrance Signage

The design principles of our recent signage refresh encourage greater user engagement in exercise and outdoor activity by using pictograms and maps to illustrate the facilities available in the park and the surrounding area. It promotes the unique character of each park and its association with the community and presents a consistent London Borough of Hounslow parks identity.

There are 2 entrance signs in Watermans Park and an additional ‘Friends’ noticeboard





Onsite Promotion

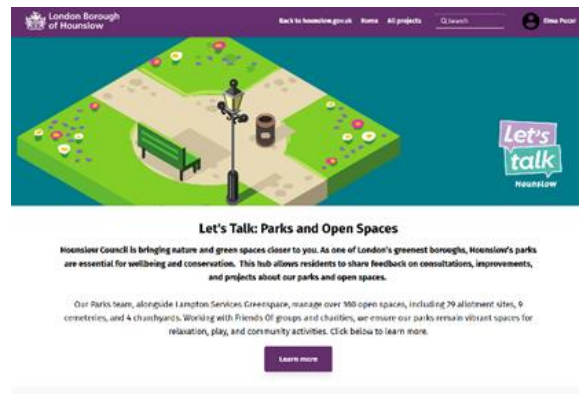
To promote events and activities in our parks, weatherproof posters and banners are used to display up and coming events and activities across the site and promotional materials are shared with local community groups. Noticeboards are also used by the Council and local communities to share upcoming events and activities as they are accessible for all.

Web & Press

The Council's website has a dedicated Parks and Open Spaces section which can be found [here](#). You can find general information about the service, with useful links, advice, and reporting channels for customers to use.

Parks Hub

The Consultation and Engagement platform Let's Talk Hounslow has a new dedicated Parks Hub which includes current consultations, surveys, and live projects, as well as a digital noticeboard. Since the launch in February 2024, the site has had over 27,800 visitors to the homepage. To view the hub visit [here](#)



Hounslow also has several other websites which are designed to engage with the wider community about our services and the opportunities available in Hounslow.

- Find out what's on [InHounslow](#)
- [Hounslow Nature Network](#) is a new resource bank to connect you with local environmental organisations across London
- A dedicated [Nature and Greenspaces](#) section on Hounslow Connect, the go to platform for local activities, advice, guidance and support in Hounslow
- Promotion through Go Parks London- <https://www.goparks.london/boroughs/hounslow>
- London National Park City Mini-Guide for Hounslow, celebrating Hounslow's great outdoors [Hounslow's Mini Guide](#)





The Council also has an active social media presence on [Facebook](#) and [X](#) with the handle @LBofHounslow.

To create community awareness for all its facilities the Council regularly produces articles and press releases about activities and facility development. The Council publishes a regular newsletter, Hounslow Matters, which is provided to all residents and includes news and information about our services, including parks and open spaces. To download the latest publication please follow the link [here](#).

Lampton Greenspace is a part of the Lampton Services Group who have their own social media platforms.

- <https://www.lamptonservices.co.uk>
- X- [@TheLamptonGroup](#)
- Facebook- [lamptonservices](#)
- Linked In- [Lampton Services](#)
- Instagram- [@lamptongroup](#)

Events

The Council encourages the hire of parks to appropriate organisations for commercial and community events. Events are held in accordance with the Parks and Open Spaces Events Policy found on the council webpage [here](#).

Upcoming in 2026

The Events team are currently planning events and activities for the upcoming year. Events Calendar is available to view on the LBH website- [What's On | InHounslow](#)

- The National Gallery: Art On Your Doorstep: thanks to Mark Pierce of the Creative Milke Brentford has been selected as one of 12 UK towns for this free outdoor exhibition. Two or three life-sized reproductions may be sited in the park, subject to agreement on locations. The exhibition is expected to launch alongside Creative Mile events in late summer 2026.

2025

- Friends Summer Bandstands returned this summer, with 3 or 4 local bands performing at each event supporting Speak Out Hounslow with the help of volunteers from GoodGym.





- Bat Talk & Walk guided by Habitats & Heritage in May 2025, self-guided walk in August 2025

2024

- Return of the Summer Bandstands over 6 Saturdays featuring local musicians and the Speak Out in Hounslow Choir.



2023

- The Friends of Watermans Park held summer bandstands over 6 Saturdays. One concert was in collaboration with UWL's London College of Music whose students performed as well as The Speak Out in Hounslow Choir and the Shout Out Brass Band.





Events 2022

'Idle Women' – Summer of Culture event that was funded by the Women's Euros. (2022)

Part of a larger national project where smaller events were hosted to help women reclaim spaces for themselves, particularly those close to rivers and canals. Activities were based on what society deemed women shouldn't be doing anymore. This event was a dance party that hosted around 45 women aged over 60, a safe space to have fun, make friends and to create a positive memory.



'Open Mic'- Summer of Culture and Friends of Watermans (2022)

Watermans Park pergola was the perfect set up for the open mic event that happened once a week on the weekend during July 2022. Residents enjoyed the sunshine and singing.





How do we know we have arrived?

Monitoring and Review

This management plan has been designed as a live document that will guide development in the park over the next five years. Progress will be subject to monitoring and review in order to measure success and delivery of aims.

LBH Parks Officers work closely with GS and the Friends group to monitor progress and discuss future plans. This includes:

- Performance against the requirements of the Management Plan
- Provision and analysis of infrastructure surveys
- Provision and analysis of asset surveys
- Monthly project meetings
- Quarterly Friends Forum
- KPI's and performance monitoring (see Appendix 4)

An annual SWOT analysis will be carried out by all stakeholders and, together with the information gathered from all the monitoring methods will be recorded and fed into annually updated management plans.

GFA Judges feedback and award outcome will enable continuous learning, development and improvement by all partners involved in the award process. Discussed at monthly Parks and GS management meetings and meetings with stakeholders.

Action Planning

Our action plan for Watermans Park is provided in Appendix 1. This plan is based on an evaluation of the SWOT analysis together with other projects and plans raised by the Friends group. The action plan lists actions and categorises based on timescales and the Green Flag award criteria. The plan will also allocate ownership for each task to the key stakeholders:





Appendix 1

Watermans Park | Green Flag Award | Action Plan Updated 2026

Key to Action Plan		
Green Flag Award Criteria	Stakeholders	Delivery Timescales
W Welcoming Place	LBH Parks Service Management Team	S Short term (less than 1 year)
H Healthy, Safe and Secure	GS Lampton Greenspace	M Medium term (1 to 3 years)
VM Well Maintained and Clean	FoWP Friends of Watermans Park	L Long term (3+ years)
S Sustainability		O Ongoing
BH Biodiversity and Heritage		
C Community		
Mkt Marketing		
Mgt Management		

MANAGEMENT ACTION	STAKE-HOLDER	GREEN FLAG CRITERIA	TIME-SCALE	STATUS 2026
Install new signage, noticeboards and information boards	LBH	W, S	S	Completed 2023. Heritage trail boards between Kew bridge and Brentford bridge installed in 2024
Thames Path resurfacing.	LBH, GS	W, WM	L	Completed in 2025
Anti-social behavior. Continue stakeholder engagement and targeted enforcement	LBH, GS, FoWP	W, H	O	As required
Options for pop up vendors	LBH, FoWP	W, C	O	Space in social area for pop up vendors to be present in the park – very few vendors have expressed an interest.
Develop plans for increasing habitats and the biodiversity of the site	LBH, GS, FoWP	BH	M	Work with local schools to install bug hotels and bat boxes – completed. Undertake FIT surveys to support biodiversity monitoring
Establish a community Garden	FoWP, LBH	BH, C	M	2025 Friends to establish a community garden at the north end of park – funding bid was rejected in 2025.
Establish Gardening Club	FoWP	BH, C	M	Friends established a gardening club in 2025 to tend to planted beds, increase community involvement.
Tackle ongoing graffiti	LBH, GS	W, VM	S	Completed 2024 - mural on north wall to deter graffiti using a local artist.





MANAGEMENT ACTION	STAKE-HOLDER	GREEN FLAG CRITERIA	TIME-SCALE	STATUS 2026
Maintain a healthy tree stock	LBH, GS, FoWP	W, H, WM, S, BH	O, S	Monitor all new native woodland plants and trees to ensure they prosper.
Continue to work with the Friends of Watermans Park. Continue to provide support to other community volunteers/services to promote greening activities	LBH	C	O	Ongoing – Gardening club established in 2025
Support Fitness activities in the park.	LBH, GS, FoWP	C	O	Positive use of the park for fitness activities with minimal impact on the green assets. Use of covered event space.
LBH to continue to facilitate events within Hounslow's parks and open spaces as part of an active community engagement agenda.	LBH	C	O	Ongoing. More events with local children.
LBH to facilitate opportunities for education, culture, and heritage at the site.	LBH, GS, FoWP	C	S, M	Heritage interpretation project boards installed. Being part of Creative Mile Brentford
Continue to publicise the park through LBH website, social media platforms and noticeboard. Also, borough wide campaigns, including achievements, initiatives, and announcements.	LBH, FoWP	Mkt	O	Ongoing
Support other positive promotion of the park through various media platforms.	LBH, GS, FoWP	Mkt	O	Ongoing
The management plan needs to be reviewed annually and the action plan to be updated annually.	LBH, GS, FoWP	Mgt	O	Ongoing





Appendix 2

Ecological Survey 2023

Watermans Park is a public park (1.1ha in size) and has recently been refurbished. All extra heavy standing (EHS) planting, native planting and herbaceous planting took place in March 2022. It is a valuable green space and can help in tackling the climate change emergency.

This site visit was not able to produce a comprehensive wildlife-flora and faunal species due to the factors that influence their presence (seasonal or dormancy periods). In general, habitats can be identified within the site and their potential to support protected species.

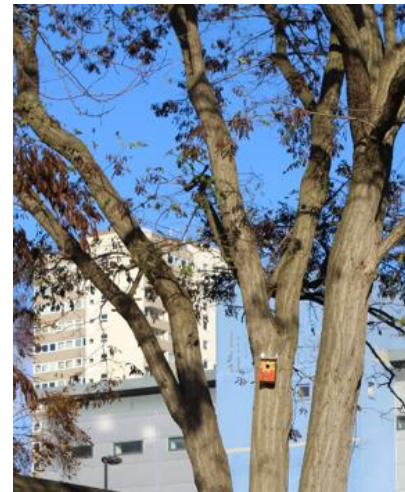
Habitats at the site include bare ground, dense scrub, wildflowers, young and mature scattered trees across the site and at the banks of the river Thames.



Fig: Dense scrub



View of a mature tree



Bird box

Seagulls and pigeons were seen during the site visit as well as bird nests. Old and mature trees along the existing tracks have the potential to support roosting bats as there were crevices and gaps suitable for crevice dwelling species (see Fig.). No other small mammals except grey squirrels were seen. A sward of grass, tall ruderal vegetation, bare earth provides opportunities for foraging, insolation and refugia for reptiles, no reptiles were seen during the site visit.

Considerations:

- Continuous habitat should be maintained to ensure that commuting and foraging routes are not lost.
- Habitat piles for amphibians, reptiles and invertebrates should be created across the western side of the park.
- The value of the site for breeding birds and bats could be enhanced by installation of more bird and bat boxes onto the trees.





Appendix 3

Annual Maintenance Work Schedules

The following table provides an overview of the annual maintenance work schedules. All frequencies are subject to seasonal variations, resource, and specific horticultural requirements. They are reviewed annually by the Operations Manager at GS to ensure they remain suitable and reflect any significant site changes. See “Meeting the Green Flag Criteria” section for more detailed management information.

Service	Frequency/Management information
GM Summer works (March - October) <i>Amenity grassland cutting</i> <i>Rough grassland cutting</i> <i>Wildflower meadow cutting</i> <i>Hedge & shrub cutting</i>	Managed by the Grounds Maintenance Teams Once every 3 weeks 1-2 cuts per summer season 1-2 cuts per summer season 1 “reduce cut” dependent on horticultural requirements
GM Winter works (October – March) <i>Hedge & shrub cutting</i> <i>Pond clearance</i> <i>Leaf clearance</i>	Managed by the Grounds Maintenance Teams 1 “hard cut” dependent on horticultural requirements As required, dependent upon size and conditions As required, from hard surfaces and grass areas
Cleansing <i>Litter collection & bin emptying</i> <i>Non-offensive graffiti removal</i> <i>Offensive graffiti removal</i> <i>Fly tip removal.</i>	Managed by the Cleansing Teams [site specific] Daily, including bank holidays. Within 7 days of notification Within 24 hours of notification Within 48 hours of notification
Playgrounds <i>Safety inspections</i>	Managed by the Playground Inspectors One visual inspection per week minimum (based upon site usage), quarterly “operational” inspections, recorded, annual independent inspections by the Royal Soc. for the Protection of Accidents (ROSPA), recorded.
Infrastructure <i>Cleansing (bins, benches, signs etc).</i> <i>Lighting</i> <i>Buildings</i>	Various teams/management As required, based on visual inspections and reports Inspections and repairs managed by Hounslow Highways All H&S checks conducted, electrical, fire, water, etc.
Trees <i>Tree inspections</i> <i>Tree maintenance</i> <i>Tree watering</i> <i>Tree planting</i>	Managed by the Tree Team Annually Based on previous inspections, prioritised by H&S Summer: May – September (for trees under 3 years) Winter: October – March





Monitoring the Annual Maintenance Work Schedules

Members of the Parks Team conduct site visits to ensure that the work schedules are being adhered to and report issues to GS to resolve where necessary. Customer enquiries relating to maintenance issues are also routinely assessed to ensure they are rectified in a suitable and timely manner.

The Parks team also make use of and refer closely to the guidance provided by Parks for London in their recently updated Green Space Quality Manual. This provides valuable insight and understanding as to “what good looks like” and will help to ensure a consistent approach is taken during routine monitoring.

For more information regarding the tools and approach that will be used for monitoring, please visit the [Parks for London](#) website and download the Parks for London [Green Space Quality Manual](#).





Appendix 4

Contract Performance & Key Performance Indicators

The London Borough of Hounslow’s Parks team works in close partnership with GS—to deliver and monitor the full range of parks and open-space services across the borough. Lampton Greenspace provides the operational delivery for grounds maintenance, arboriculture, playground inspections, litter control, horticulture, cemetery and allotment management, and countryside services, all in line with the council’s service specification.

Performance of the Parks service is jointly managed through an agreed suite of Key Performance Indicators (KPIs), which are monitored monthly (with some measures being seasonal). These KPIs ensure accountability, drive service quality, and support continuous improvement. They cover outputs such as grounds maintenance standards, tree inspection and management, play area safety inspections, horticultural quality, response times for customer enquiries, and the overall condition and cleanliness of parks and open spaces.

Through this structured performance framework and collaborative approach, the Parks team and Lampton Greenspace work together to maintain high standards, deliver community value, and support Hounslow’s wider environmental and “Greener Borough” objectives.

Please find a link to a recent cabinet performance report, which includes summary performance data for the Parks service [here](#) and examples below.

Financial Year		2025 / 2026	Date of Completion		12th January 2026		
Reporting Period		P9	Completed By		Liam Moore		
Month		Dec 25					
London Borough Of Hounslow - Client Team				Lampton Services Greenspace - Document Owner and responsible person			
Head of Parks Development	Gayle Galvin <Gayle.Galvin@hounslow.gov.uk>			Head of Greenspace	Liam Moore <Liam.Moore@lamptongroup.co.uk>		
Commissioning and Performance Manager	Jamie Smith <Jamie.Smith@hounslow.gov.uk>						
Project Analyst	Gregory Dando <Gregory.Dando@hounslow.gov.uk>						
Sub Department	KPI	Performance Indicator	Agreed Targets (Annual)	Agreed Targets (Month)	Month Actual	Reported SR Month	RAG Status
AIPP	1.1	Number of Residents on allotment waiting list	700	700	2166	N/A	Pass
AIPP	1.2	% - Allotment Occupancy	90%	90%	94.85%	N/A	Pass
AIPP	1.3	% Visual Playground Visual inspections to be completed weekly	100%	100%	100%	N/A	Pass
AIPP	1.4	Production of operational playground report by a qualified engineer with images	100%	N/A	100%	N/A	Pass
Arboriculture	2.1	% of planned tree inspections to be carried out Quarterly	90%	90%	100%	N/A	Pass
Arboriculture	2.2	Trees to be inspected within 7 days of notification	90%	90%	100%	0	Pass
Arboriculture	2.3	Planned tree works to be completed each quarter	90%	90%	100%	N/A	Pass
Arboriculture	2.4	Tree Emergencies to be responded to within 3 hours of notification	100%	100%	100%	1	Pass
Cemeteries	3.1	% Burial service to be implemented within 7 days of request	100%	100%	100%	N/A	Pass
Cemeteries	3.2	24hr Burial service provided and implemented for religious denominations	100%	100%	100%	N/A	Pass
Cemeteries	3.3	Completed Grounds Maintenance programme	100%	100%	100%	N/A	Pass
Cemeteries	3.4	% Maintenance programme completed for chapels, including cleansing before use	100%	100%	100%	N/A	Pass
Countryside	4.1	Volunteer hours from Community and corporate activities	10,000	833.3	896	N/A	Pass
Countryside	4.2	Education Numbers - Total number of children and adults participating in environmental education	4,500	375	767	N/A	Pass
Grounds Maintenance	5.1	% Fly tips to be removed within 48hrs of notification	90%	90%	98.95%	95	Pass
Grounds Maintenance	5.2	% Abandoned Vehicles to be removed within 7 days of notification	95%	95%	100%	0	Pass
Grounds Maintenance	5.3	Overflowing litterbins and excess litter to be responded to within 48hrs of notification	95%	95%	100%	0	Pass
Grounds Maintenance	5.4	% Graffiti to be removed within 7 days of notification	95%	95%	100%	0	Pass
Grounds Maintenance	5.5	% Offensive graffiti to be obscured within 24hrs and removed within 7 days of notification	100%	100%	100%	0	Pass
Grounds Maintenance	5.6	Total Number of graffiti incidents reported	N/A	N/A	0	0	Pass
Grounds Maintenance	5.7	Defective/Dangerous materials or items to be responded to, repaired or isolated within 4 hours	100%	100%	100%	1	Pass
Grounds Maintenance	5.8	% Planned works completed for grass mowing	100%	100%	N/A	N/A	Pass
HSEQ	6.1	% Service Contracts Implemented as part of FM management	100%	100%	100%	N/A	Pass
HSEQ	6.2	Number of RIDDOR reportable incidents	N/A	N/A	0	N/A	Pass
HSEQ	6.3	Number of H&S Incidents reported (Non-Riddor)	N/A	N/A	3	N/A	Pass

Example of monthly KPI report provided by GS





Parks Summary - October 2025

PGID0001 - Volunteer Hours
- 1699

Decrease of 496 hours from previous month. Likely as a result of decrease hours of daylight as winter progresses as well as weather and less events taking place in parks



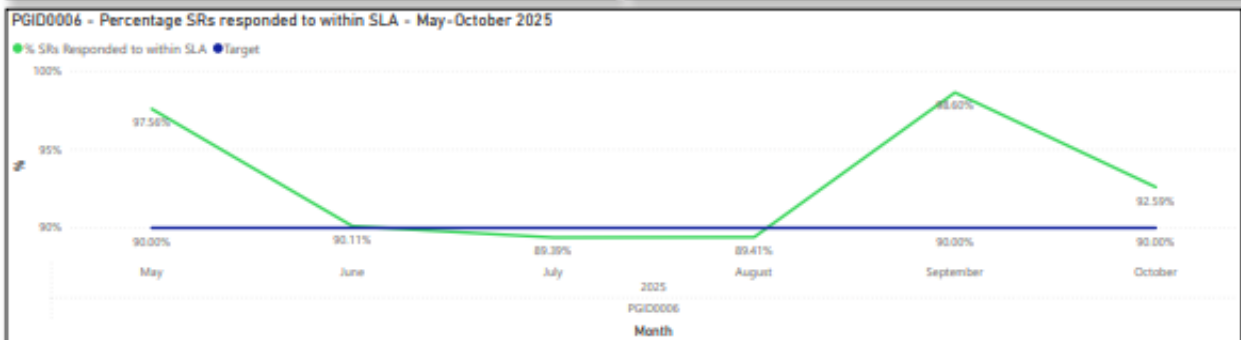
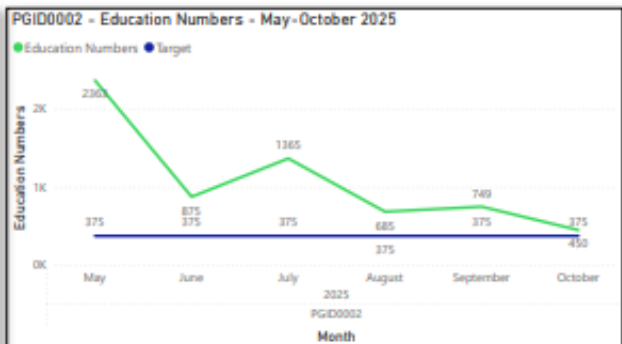
PGID0002 - Education Numbers
- 450

Decrease of 299 people receiving environmental education. This is likely to due changes in weather & hours of daylight. As well as October half term holiday, where less school groups are receiving education.



PGID0006 - Percentage SRs responded to within SLA
- 92.59%

As we collect more data on this KPI, performance continues to improve. A 2% increase from last month, despite an increase of 32 SRs.



Example of Monthly Performance Cabinet Report - Parks





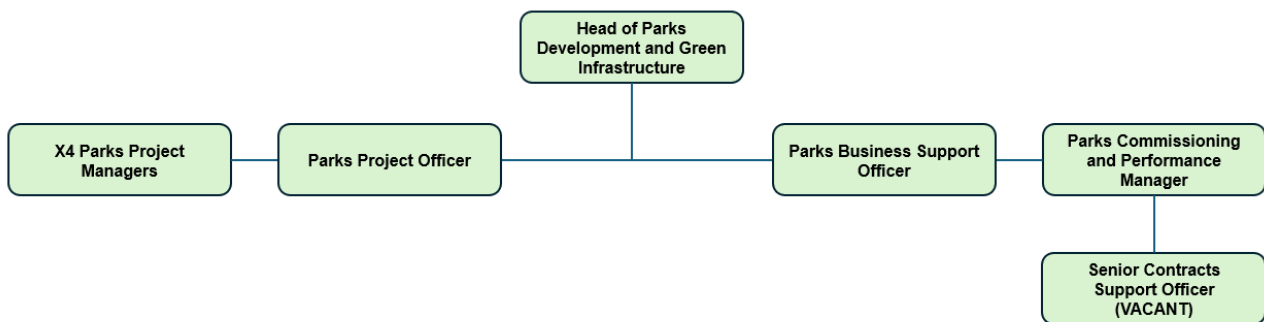
Appendix 5

Management Structure and Responsibilities

Watermans Park is owned and managed by the LBH and maintained by the GS. Information below sets out the management structure and describes the roles and responsibilities of the key personnel involved in managing and maintaining the site.

LBH Parks Service Management Structure

The Environment and Culture Directorate provide the following roles who are responsible for the management, and associated roles, of Hounslow’s parks and open spaces:



LBH Head of Parks Development and Green Infrastructure

Senior commissioning role for the management and partnership with GS, senior advisor in relation to parks and open spaces, strategy and policy development, Member’s liaison.

LBH Parks Project Managers (x4)

Project development and management, fundraising, community engagement and consultation, implementation, strategy, and policy setting

Parks Project Officer

Development and delivery of projects, fundraising, community engagement and support Head of Parks

Commissioning & Performance Manager

Supplier performance governance and relationship management, Legal and contracts, Planning/Commissioning, Operational Service delivery and business processes/systems.

Senior Contracts Support Officer

Supplier performance, customer service and casework, community engagement and consultation, project support.

Parks Business Support Officer

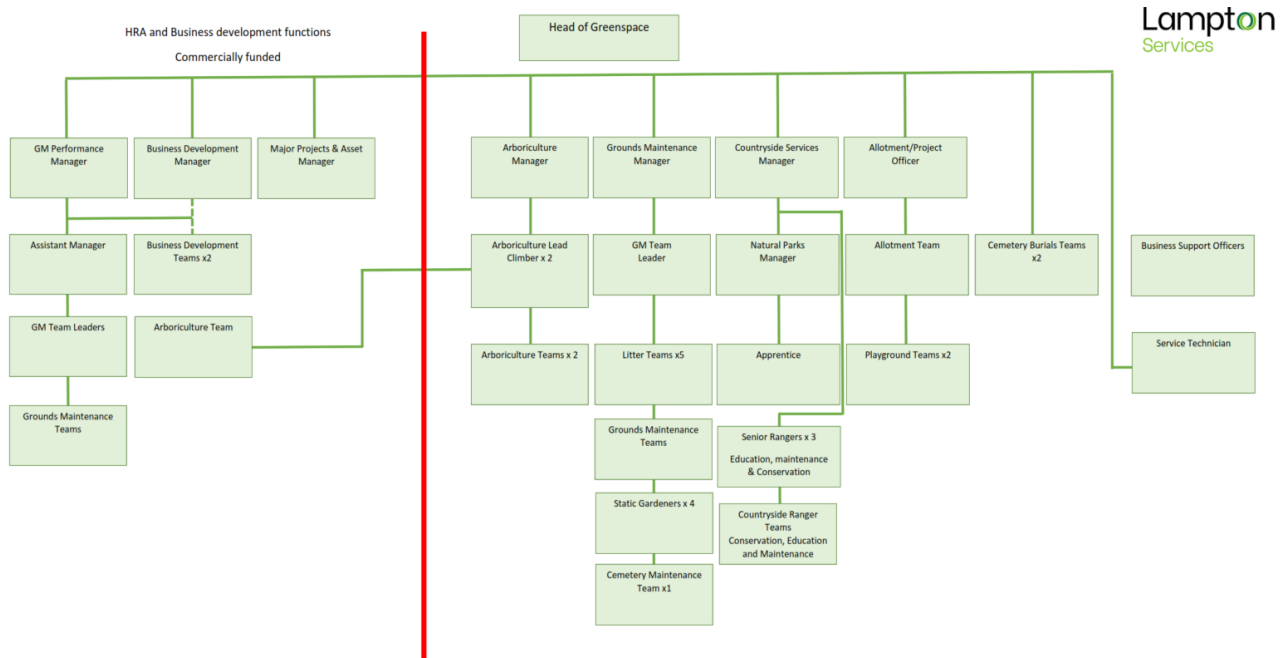
Assistance with finance; administration, project support, lead on Parks communications and web design management.





Lampton Services Greenspace Management Structure

The following GS roles are responsible for the management of Hounslow's parks and open spaces:



Head of Service

Responsible for the ground's maintenance service provision. Oversees the delivery of the specification which includes infrastructure.

Projects Manager including the Allotment Service

Responsible for the development of park infrastructure, management of the allotment service, overseeing horticultural standards, schemes, and developments. Main contact for contractors (CDM). Friends and Member liaison.

Countryside Manager

Responsible for the management of the borough's countryside service. This role includes the management of the Ranger team and educational, animal husbandry, environmental and wildlife operations/programs associated with these locations.

Planned Maintenance Manager

Responsible for the management of the operational resources to deliver the ground maintenance services for the parks and open spaces sites.

Performance and Support Officer

Customer Service functions- Freedom of Information (FOI), customer enquiries, councillors' enquiries, and monthly statistics; technical project support.





Tree Team Manager

Responsible for the teams that carry out the inspections and maintenance of the boroughs 85,000 park trees. Oversees all tree planting schemes for the council and community groups in parks. Managing and mapping/recording of invasive species. Planning application guidance to LBH.

Playground Inspectors x2

Visual, operational, and minor repairs of playgrounds Inspected annually external contractor.

Operational Teams

Ground maintenance at Watermans Park are delivered using mobile teams. These teams provide the Grass cutting, horticultural tasks, general maintenance, litter bin emptying and litter picking.

Business Support Officer

Provides administration for fleet, handles finances and overtime schedule



London Borough of Hounslow

Hounslow House, 7 Bath Road
Hounslow TW3 3EB

www.hounslow.gov.uk

Tel: 0208 583 5555



**London Borough
of Hounslow**



Lampton
Services
Greenspace