

GREEN FLAG MANAGEMENT PLAN 2026

Pevensey Road

Local Nature Reserve



London Borough
of Hounslow

Lampton
Services
Greenspace



Foreword

The London Borough of Hounslow has some superb greenspaces that everyone can be proud of. They are places where people can relax, enjoy nature, play, or take part in cultural and historic activities and recreation. They are essential for the health and well-being of our residents, and they are vibrant spaces that provide a borough-wide green infrastructure for our communities.

In Hounslow, we are committed to stimulating a strong and robust green recovery related to our Greener Borough Framework and Climate Emergency. The Council's Green and Blue Infrastructure Strategy plays a major role in delivering the Greener Borough Framework and sets out key priorities for our greenspaces in areas such as health and wellbeing, regeneration, climate change and nature recovery.

The London Borough of Hounslow considers the Green Flag Award process as a tool towards positively developing our greenspaces within this strategic framework and in partnership with our communities. It contributes to providing a vision, with clear objectives and priorities for how the Council and its partners would like to see greenspaces managed in future years.

This plan is not only the commitment from the Council to improve our greenspaces but is an important recognition of the support and commitment of the friends of parks, community groups, local clubs, third sector and partners who share our visions and work with us to respond to our green agenda.

Acknowledgements

This plan has been produced by the London Borough of Hounslow (LBH) Parks Team and Lampton Services Greenspace* (GS). In addition, it is important to acknowledge the great contribution from the Countryside Volunteer Rangers formerly Pevensey Road Green Gym Rangers and the Friends group FORCE for their commitment and dedication in supporting the development, promotion, and management of Pevensey Road Local Nature Reserve**.

*Lampton Services Greenspace (GS) is part of the Lampton Limited Group and is a company wholly owned by London Borough of Hounslow with an aim of returning value to the Council representing a bold new ambitious approach.

**Pevensey Road Local Nature Reserve will also be referred to as Pevensey Road LNR.





Contents

Foreword	1
Acknowledgements	1
Purpose of the Plan	3
Where are we now?	5
Site Description & Facilities	5
Detailed History	7
Nature Conservation	9
Flora & Fauna	10
Recent Achievements	11
Where do we want to go?	18
Green Flag Analysis	18
SWOT Analysis	19
How do we get there?	20
Meeting the Green Flag Award Criteria	21
A Welcoming Place	22
Healthy, Safe & Secure	22
Well Maintained & Clean	26
Environmental Sustainability	28
Biodiversity & Heritage	30
Community Involvement	31
Habitat management	31
Community Involvement	32
Marketing	33
How do we know we have arrived?	36
Appendix 1 – Action Plan	37
Appendix 2 – Annual Maintenance Work Schedule	39
Appendix 3 – Habitat Work	41
Appendix 4 – Contract Performance & Key Indicators	42
Appendix 5 – Management Structure & Responsibilities	45





Purpose of the Plan

The Management Plan for Pevensey Road Local Nature Reserve has been prepared by LBH and Lampton Services Greenspace with input from the Countryside Volunteer Rangers group. The plan is specifically developed for the individual site with a dedicated Green Flag Action Plan.

This plan has been developed following detailed assessment of the Green Flag Award criteria and a comprehensive collaborative review of the existing uses, management, and maintenance of Pevensey Road LNR.

As part of the development of the plan, detailed consultation has taken place with the Lampton Services Greenspace Countryside team, parks maintenance and management team, LBH officers and Friends groups.

The Management plan is a 'working document' that brings together all the information relating to Pevensey Road LNR and will be updated, revised, and annually reviewed. This plan has been developed based on the Commission for Architecture and the Built Environment (CABE) Space document *"A Guide to Producing Park and Greenspace Management Plans"* and the *"Green Flag Award Guidance Manual"* guidelines.

Policy & Strategic Context

Actions and aims within this management plan are both guided by, and relate back, to wider Council strategies. The development of parks and open spaces are a vital component of the Council's Corporate Plan 2022 – 2026. Our work during this period is focused on six priority ambitions for a borough that is greener, healthier, cleaner, thriving, safer, and livable. Green infrastructure contributes in many ways to helping us achieve these priorities.

A key approach of Hounslow Council is working under the concept of "One Hounslow" where services are delivered without silos, working for specific outcomes with several internal council departments, community groups, NGOs, and government bodies. Whilst also attracting external investment and developing new partnerships through the Regeneration Service's Business Case for Growth.

Parks and open spaces play an important role in the approach highlighted in the Council's Joint Health and Wellbeing Strategy with start, live and age well, preventing ill health, which in turn has an impact on reducing costs within the wider economy, the Council, and the NHS.

The Council's Equalities and Diversity Strategy 2023, created to improve equality, diversity, and inclusion - sets out an ambitious approach to target policies and funding to the areas which need them most to thrive. The strategy is based on three pillars - Equality by Place, Equality by Group, and Equality as Employer. Hounslow Council has committed to transform the opportunities and life-chances of communities in the borough's 30 most disadvantaged neighbourhoods.

The Council approved the Greener Borough Framework 2020-30 which seeks to provide a high-level framework to deliver on the Council's ambition and aspirations for the borough through enhancing our environment and reducing our use of resources. The framework is part of a wider ambitious green agenda bringing different people and organisations together to discover, engage, innovate, and deliver.





The adoption of the Green and Blue Infrastructure Strategy and Nature Recovery Plan are the pillar of the strategic framework for the development of our parks and open spaces and their management plans through the Green Flag Award process.

Useful Links:

- [Corporate Plan 2022-26](#)
- [Climate Emergency](#)
- [Green Infrastructure Strategy](#)
- [Greener Borough Framework](#)
- [Nature Recovery Action Plan](#)
- [Equalities, Diversity and Inclusion Strategy](#)
- [Hounslow Joint Health and Wellbeing Strategy 2023-2026](#)
- [Opportunity Hounslow: Our Business Case for Growth](#)

Parks Funding

The Council's Parks service is funded by a revenue budget for ground maintenance which are provided by our service providers, Lampton Services Greenspace, who maintain Hounslow's parks and open spaces, including allotments, cemeteries, trees, countryside and other workstreams.

In addition to this, the Parks and Open Spaces team sits within the Council's Environment Services directorate focusing on capital investment, contract and performance management, income generation and other initiatives. This is funded through core revenue funding and capitalisation.

Current capital funding has been allocated through a parks improvement programme, active since 2023. This funding covers project delivery and staff resourcing. Other capital funding is obtained via Community Infrastructure Levy (CIL); S106, the Council's Thriving Communities fund (local CIL), [Green Investment Fund](#), and other grants and initiatives. These are applied for annually or as necessary and are based on need and strategic investment required by both the Council and local communities.





Where are we now?

Site Description & Facilities

Pevensey Road Local Nature Reserve is an oasis hidden within a heavily urban area. The reserve is highly attractive for visitors who take part in various activities on site such as dog walking, recreation, wildlife spotting and photography and art/ graffiti. The Countryside Rangers and the work with the local community to ensure that the park continues to be a welcoming, safe, and enjoyable park to visit. Pevensey Road LNR is managed for two primary purposes. In terms of its ecology, it is an important link in a chain of riverine habitats that run along either side of the River Crane and form a vital natural corridor through what is an otherwise highly developed part of West London.

Pevensey Road Local Nature Reserve is located to the South of the River Crane, north of Hanworth Road at Grid reference TQ120733. The site forms part of the Site of Metropolitan Importance known as M076 The Crane Corridor.



Site Information

Name: Pevensey Road, Local Nature Reserve

Contacts: Ranger-0788741080

Web: www.hounslow.gov.uk

Designation: Local Nature Reserve, Site of Metropolitan importance

Ownership: London Borough of Hounslow

Byelaws: Visit the [Park rules and byelaws | London Borough of Hounslow](#) page to download

Access: open access at all times

Transport: Train: Feltham Station

Buses: H25, 111

Address: TW13 5HA //fields.wisdom.help

Email: Countryside@hounslow.gov.uk

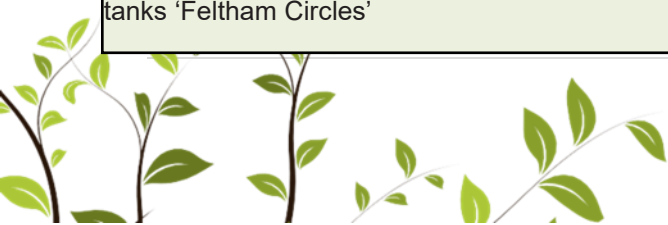
Facebook: [Countryside Volunteer Rangers](#)

Size: 18ha

Tube: Hatton Cross

Parking: Street parking

Local Facilities: Amenity grass area, meadows, woodland, community orchard, log seating area, former sewage tanks 'Feltham Circles'

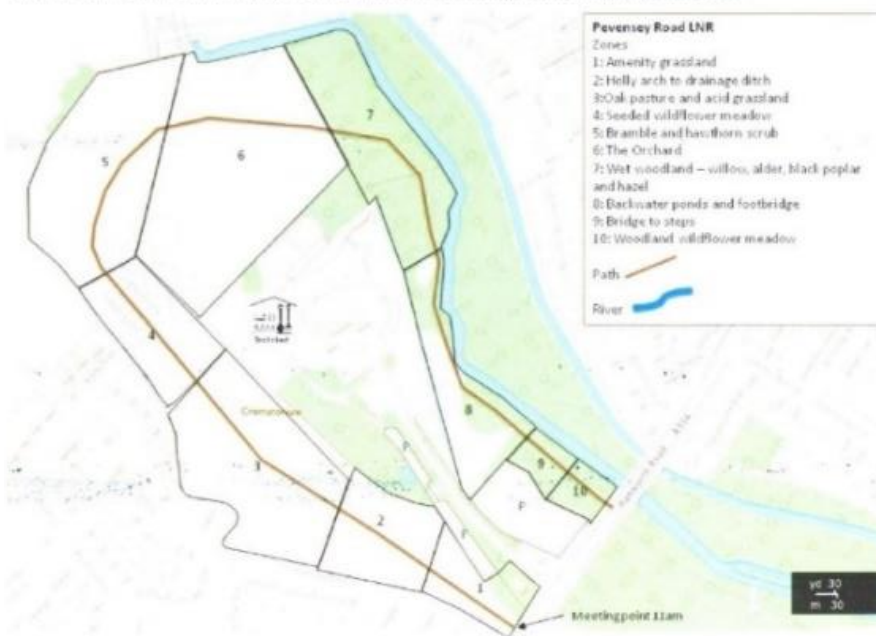




Within the 18-hectare site, there are four main habitats:

- Beside the River Crane lies a zone of wet woodland, which is a mixture of willow, alder, and ash with a tangled understory primarily of bramble and common nettle.
- North of this is an area of hawthorn and elder intermixed with bramble and coarse grasses.
- In the middle of the site lies an area which used to house settling tanks but is now an area of round concrete walls which support a high level of graffiti art from local enthusiasts.
- To the west of the settling tanks, lies a manmade mound which is covered in fairly recent but never less herb rich grassland.
- To the south of this is a small area of reseeded wildflower grassland which is rich in species such as wild carrot and great burnet.
- The remainder of the reserve, the western half is occupied by a neutral meadow which is fairly species poor but does house interesting indicator species such as pignut which indicate that the meadow is of some age.

Map of Pevensey Road Nature Reserve divided into zones according to the different habitat types



In terms of its use for recreation, it is again a vital link along the Crane corridor which facilitates access for local people along the river north through Hounslow into Hillingdon and south into Richmond and along to the Thames. As well as this strategic importance the site is also a vital green space for the local estates which surround it, providing a quiet oasis for walking, nature study, and other passive recreation. Pevensey Road Local Nature Reserve is managed by the Lampton Services Greenspace Countryside Team on behalf of LBH. There is an active volunteer group, The Countryside Volunteer Rangers, who meet weekly on site to carry out maintenance and habitat improvements.

The reserve is managed in line with the site-specific habitat plan and relies on volunteers to assist in the practical works. The Rangers visit the site several times per week ensuring the park looks clean and tidy and ensuring it is safe for visitors. FORCE (Friends of the River Crane) is also active on site and carry out visitors counts and surveys as well as looking for funding applications and assisting future visions for the Crane Corridor.





Detailed History

The river Crane begins in Harrow and runs through Hillingdon as the Yeading Brook, changing its name to the River Crane at the Grand Union Canal in Hayes and eventually meeting the Thames at Isleworth. The artificial Duke of Northumberland's River links the Crane Valley to the Colne Valley.

The landscape of the lower Crane valley today reflects its history and past use. This can be seen in some of the place names surrounding the park- for example farms have given their name to the Butts Farm Estate across the Hanworth road.

The landscape, especially across from the Pevensey entrance into the Crane Park shows evidence of previous use; for example, the blast absorption mounds linked to the manufacture of gunpowder mills and the mill channel created to provide a regular water supply to power riverside mills. From the late C18th to 1926 Hounslow Gunpowder Mills operated from the land east of Hanworth Road, covering 150 acres and creating new wide leats and a mill pond- now the site of Crane Park Island.



The history of the Pevensey Road LNR still remains unclear, however we know there was a farm on the site until the early 20th Century, with old maps showing orchards in the surrounding fields. The veteran apple and pear trees found on site today support this idea with potential links to the farmlands at Crane Park.

Opposite the site entrance, just to the East of Hounslow Road, we know The Butts and Glebe Farm of over 200 acres were bought by William Whiteley in 1891. William Whiteley created a single model farm, which also included the Rookeries from 1894, known as the Hanworth Farms. It was apparently never profitable, He grew an extensive range of fruit and vegetables whilst also rearing cows, pigs, bees, dogs, and rabbits. He also manufactured jams, potted meats, squashes, confectionery and dishes for invalids, pickles, and sauces. All preparation and packaging took place on site, and all produce was taken to market by cart.





After Whiteley's death in 1907 the sites continued to be farmed, eventually sold to Beach's Jam Company of Brentford. From 1933 some of the farmland was gradually sold off for housing and in the 1940's, a sewage works was built on Pevensey, however this was quickly abandoned leaving the surrounding area as a public space and nature reserve.

Pevensey Road Local Nature Reserve borders on three sides the Southwest Middlesex Crematorium which was opened by President of the Cremation Society Lord Horder on 9th October 1954. This was the 74th local authority crematorium to open in the United Kingdom and the sixth of that year.

The site's gardens have been gradually extended and now consist of the North Garden, Wild Garden, a Rose Garden and Lawn 1, 2 and 3 which include meadow land, stone works, and water features. The gardeners of the crematorium support the nature conservation work carried out in the neighbouring Pevensey Road LNR and provide storage and facilities to staff and volunteers

Community Graffiti – 'Feltham Circles'

The former sewage tanks have created three large concretes 'bowls,' which have been informally used by graffiti artists over the last few decades. The local enthusiasts design seasonal and relevant pictures to decorate the area and today many visitors stop by to admire the artwork which has become iconic for this area.

The Countryside Rangers engage with the artists in the area and together work hard to ensure the bowls are used for positive graffiti pictures. We encourage members to report any abusive or offensive artwork to the team.





Nature Conservation

Topography

The reserve rises gently from the River Crane to its Western edge on Pevensey Road. It has an area at the northeastern end where artificial mounds rise to some 7 to 8 metres in height adjacent to the disused settling tanks. At the southern corner of the sites where the River Crane passes under Hanworth Road there is an artificial mounding which raises the height of the site from the floodplain to the bridge some 6-7 metres above.

Soils and Geology

The natural pedology of Pevensey Road LNR is Taplow Terrace gravels and loess to the River Crane alluvial silts. These are supplemented in the northern end of the reserve by made up ground derived from the old sewage works and railway working in that area.

Woodland

The eastern half of Pevensey Road LNR is comprised of semi-natural deciduous woodland that follows the River Crane corridor and surrounds the crematorium that lies in the centre of the reserve. The woodland adjacent to the Crane is wet in nature and displays species indicative of this with willow *Salix spp.*; alder *Alnus glutinosa* and ash *Fraxinus excelsior* predominant. There is a fair amount of invasive sycamore *Acer pseudoplatanus* also present here. The canopy is open, and the understory is limited to elder *Sambucus nigra* and hawthorn *Crataegus monogyna*. Ground flora reflects the wet nature of the woodland and reed sweet grass *Glyceria maxima*, reed canary grass *Phalaris arundinacea* and gyswort *Lycopus europaeus* are all to be found amongst the common nettle *Urtica dioica* and Himalayan balsam, *Impatiens glandulifera*.

The woodland found to the east of the crematorium species poor, dominated by elder and hawthorn with very little ground flora. The most important species here is several veteran pedunculate oak trees *Quercus robur*.

Natural Grassland

In the western half of the reserve is a neutral meadow which is dominated by coarse grass species such as perennial rye grass, cocksfoot, and false oatgrass. It has a limited range of herbaceous species but does contain a significant abundance of the old grassland indicator species pignut.

Artificial Mounds and Reseeded Grassland

The artificial mounds at the northeastern end of the site are relatively recent and covered in a wide range of opportunist herbaceous species. The reseeded grasslands area to the west of the mounds is also rich.



Flora & Fauna

Pevensey Road LNR is also home to a variety of plant and animal species.

Birds

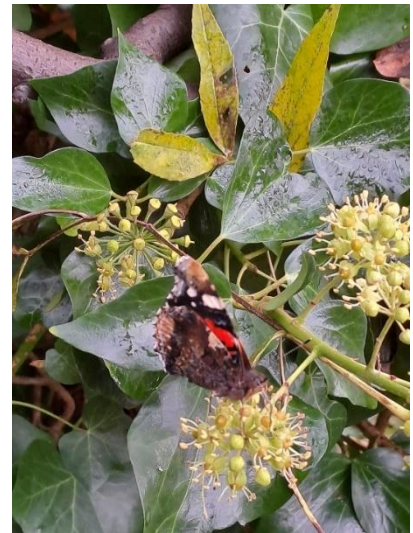
- Bull Finch
- House Sparrow
- Lesser Redpoll
- Lesser Spotted Woodpecker
- Reed Bunting
- Song Thrush
- Starling
- Kingfisher
- Linnet
- Hedge Accentor



Butterflies and Moths

- Grizzled and Essex Skipper
- Meadow Brown
- Orange-tip
- Painted Lady
- Peacock
- Red Admiral
- Small Copper
- Small Heath
- Small Tortoiseshell
- Purple Hairstreak
- Speckled Wood
- Cinnabar Moth

- Brimstone
- Brown Argus
- Comma
- Common Blue
- Essex Skipper
- Gatekeeper
- Green-Veined White
- Holly Blue
- Large Skipper
- Large White
- Clouded
- Yellow
- Camberwell Beauty



Mammals

Mammals

- Hedgehog
- Soprano Pipistrelle
- Noctule Bat
- Water Vole

Reptiles and Amphibians

- European Eel
- Grass Snake
- Adder
- Common Toad
- Slow Worm

Insects

- Stag Beetle plus, many more





Recent Achievements

Future goals in 2026:

- 2026 Public Apple Day
- Increase usage of site to include local schools

Achievements 2025:

- 45 well attended Monday Volunteer sessions in 2025 contributing 2734 voluntary hours
- Vote on name change to fall under the Countryside Rangers management, now “Countryside Volunteer Rangers – Pevensey”
- New partnerships – Mark from Thai Upon Thames has joined several sessions this year, primarily to assist with deep litter picks and river clearance.
- Maintaining old partnerships – Habitats and Heritage, FORCE, CVP, LWT continue to work with us in a catchment approach to conservation within the Borough and adjoining Boroughs through the vitally important Crane Valley.
- Volunteers Team Leader Andy Peake has continued to shape the conservation and biodiversity on site, leading the group each week and earning the affectionate title of ‘Lord Andy’ by the volunteers. Every session is a learning opportunity for the group and staff alike.
- Countryside Ranger Nathan led several guided nature walks during 2025 to give the volunteers a deeper understanding of the flora and fauna on site.
- Vast engagement growth on the Pevensey Facebook group page, with weekly updates detailing what the volunteers have achieved each session being shared to local community pages and appreciated by local residents.
- Extensive work in the ponds during 2025, with sedge clearance and sowing of marginal wildflower seeds. Additionally, grant money purchased 70 purple willow whips which were planted around the ponds by the group in April.
- 8 sessions of Balsam pulling during 2025 removing the majority of the balsam falling on the Hounslow stretch of the Crane running through Pevensey.
- Another successful year of traditional scything of the Pevensey meadows, with Ranger Andy teaching the group of the effectiveness and efficiency of linear scything.

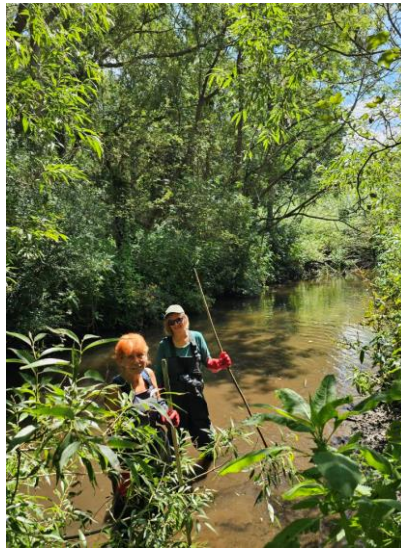


Weeding around the lavender plants and bug hotel statue at the entrance – June 2025





Cutting, raking, and removing roots from the meadow – March 2025



Balsam pulling and removing river rubbish on a hot summers day – July 2025



Mega litter pick August 2025



Sedge clearance in the ponds, some braved the waders! – February 2025





Scything the meadows in a linear fashion, after lessons from Ranger Andy – September 2025



Annual Wreath Making, final session of 2025 - December

Achievements 2024:

To encourage access to the open space and nature reserve, several improvements and additions have occurred throughout 2024:

- A fruit tree orchard has been installed and supported by Pevensey Road Green Gym Rangers. Surrounding the trees are daffodil bulbs that have been planted around the trees, and lavender lining one side of the pathway
- A wildflower meadow has been created with the help of the Green Gym Rangers and a bug hotel installed.
- A wildflower carving has been installed and created by Wild Wood Carving highlighting the prominent butterfly species known within Pevensey Road Open Space. Additionally, the wood carving has an integrated bug hotel to increase pollinator provision.
- three DDA compliant Cannock picnic tables have been installed.
- the Pevensey Road Green Gym Rangers led by the Lampton Services Greenspace rangers volunteered 2900 hours to improve the park. The group undertook a host of tasks throughout the year including litter picking, meadow scything, orchard pruning, tree planting and river rubbish clearance.



- The group have also undertaken several projects funded through the Community Fund Grants from the Crane Valley Partnership including wildflower meadow improvements, pond improvements, and orchard maintenance. These grants allowed a range of tools and materials to be bought to aid these projects.
- Alongside these projects a host of annual events were carried out including apple day which yielded a bumper crop of apples and was attended by 27 volunteers who helped collect and press the apples into juice.
- Several projects were also undertaken to install new wildlife features on site to improve local biodiversity, these included 2 hibernaculum's and a stag beetle log pile.
- This year alongside the annual meadow scything the meadows that are dominated by pignut have been tractor cut by the Lampton Services Rangers and then hand raked by the Pevensy Road Green Gym Rangers to remove the arisings.
- A brand new 450m of 2m wide Breeden gravel path from Pevensy Road Open Space to the Cavalry Tunnel, path to connect with Brazil Mill Wood was completed in Summer 2024. Ambition to increase accessibility, activation, footfall.

This new path supports the Crane Valley vision to have a waterside Greenway.



Volunteers creating a Hibernaculum



Breeden gravel path from Pevensy Road Open Space to the Cavalry Tunnel



Apple Day 2024





Achievement in 2023:

In winter 2023 the Council worked with Richmond council on River Channel and Riverbank improvements to support the reintroduction of water voles along this stretch of the river Crane.

At the north end of Crane Park, Richmond's Little Park and Hounslow's Pevensey Road Nature Reserve lie opposite each other, north of Hanworth Road. The boundary between the two boroughs is the centre of the river.

In Spring 2020 and Spring 2022, tree works were carried out to decrease shading along approximately one third of the Richmond bank, to increase light levels and help establish natural vegetation along the bank and river margins. The trees which were cleared have been further used to create deflectors that have been strategically placed along the river. These deflectors will allow the river to create form a natural meandering shape instead of the straight shape it has from various historical uses of the river and in turn provide a range of fast, slow, shallow, and deep areas of river for a range of wildlife.

Results of reducing tree shade at Little Park (right bank)



Tree flow deflector installed at Little Park, March 2022





Orchard Management

Started in 2019 with focus on planting additional fruiting trees of apple and pear varieties. At the time, the orchard was a jungle of overgrown vegetation with bramble dominating the area. The Pevensey Road Green Gym Rangers worked hard to clear the trees to identify species and started the annual apple day with the Rangers.

'Apple day' is a chance to invite all the local community, local schools, and other voluntary organisations to celebrate how much the site has achieved. We spent the day collection fruit, making juices and sharing recipes.



Apple Day November 2022 at Pevensey with Green Gym Rangers and Friends

Bridge Installation in 2019

Linking Pevensey Road LNR to Little Park in Richmond. Adding ramps and completing the railings in 2020 for accessibility and safety. Most recently FORCE was involved in a project between the Greenspace Countryside Rangers, London borough of Hounslow and the London Borough of Richmond to improve links between the neighbouring boroughs with the installation of a foot bridge linking Pevensey Road Local Nature Reserve and Richmond's Little Park. The funding bid, supported by FORCE ensured the smooth delivery of a footpath across the river allowing visitors to explore both parks with ease.





The next project was establishing a wildflower meadow around the owl bench, near the settling tanks. This area was densely covered in bramble and scrub; thus, the major task was removing this growth as well as the dense root system below. This was a difficult task but with the variety of abilities within the group, we successfully managed the land ready for seeding. In 2018 the first wildflowers were seen in amazing show of vibrant colours, and the group have been successful at continuing the meadow since.

The area has since been expanded with an additional meadow now called the 'Coronation Meadow' having been created behind the settling tanks area as part of the celebrations for the King's Coronation.





Where do we want to go?

Green Flag Analysis

The ambition for LBH in partnership with GS and community groups is to continue to work to improve standards and develop parks and opens spaces strategically according to corporate priorities and local needs.

A clear connection between the criteria identified by the Green Flag Award Scheme and the main points gained from the SWOT analysis and site review completed with the Friends group has helped to establish a comprehensive management plan for this site.

The management plan process is described below the section “How do we get there?”

Consultation & Co-design

The LBH has a strong partnership with the Friends groups-designing the future of the park together in most initiatives and opportunities.

Continuous dialogue is in place through regular communication and a quarterly forum where friends discuss wider issues and learn from each other to improve overall management standards.

LBH works in close partnership with GS with monthly project and development team meetings where the monitoring and progress of these plans are discussed.

LBH engage annually with Friends groups and community groups in compiling these management plan and their progress Ward Councillors and the Lead Cabinet Member for Recreation, Public Spaces and Parking are regularly updated on parks development projects and strategies.

Liaison with the Hounslow Met Police and the Councils Enforcement Team on matters around ASB and public safety.

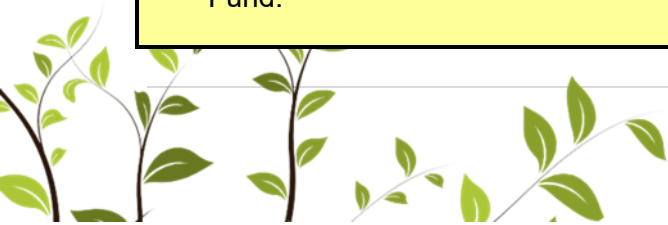




SWOT Analysis

A SWOT analysis is a management critique to identify Strengths, Weaknesses, Opportunities and Threats to help shape future improvements.

<p>STRENGTHS</p> <ul style="list-style-type: none">• Strong, active community groups• Nature status and huge ecological importance within the borough• Strong relationships with the Crane Valley Partnership and Friends of the River Crane Environment.• Community Orchard with veteran trees• Active social media page• Good partnership working with London borough of Richmond.• Forms part of the wider Crane Valley Catchment improvement plan.• Support from Lampton Services GreenSpace Countryside Rangers.• Entrance works are inviting users into the space.• Seating provision via picnic tables which are well liked by users.• Wood carving and bug hotel• Orchard developed near entrance, providing free food provision• Improvements in the conditions of infrastructure including bins and benches on site.• New signage installed• Woodland works, promoting bat habitat• Increase the connectivity of the River Crane Corridor e.g., new footpaths from Pevensey to Brazil Mill Woods.	<p>WEAKNESSES</p> <ul style="list-style-type: none">• Lack of facilities on site• Additional signage is needed i.e., highlighting natural features and planting.• Wildflower meadow requires maintenance.
<p>OPPORTUNITIES</p> <ul style="list-style-type: none">• Natural England Countryside Stewardship grant such as for the orchard.• Obtain Local Nature Reserve Designation• Potential for key Conservation programmes e.g., Tern Island, Bat habitats, and Kingfisher channels• Increase in social engagement and green activities with local community and volunteer groups.• Develop cross boundary partnerships with London Borough of Richmond• Improve current signage and access points.• Interpretation boards to exhibit wildlife and heritage through Thriving Communities Fund.	<p>THREATS</p> <ul style="list-style-type: none">• Antisocial behaviour• Wildfires• Fly tipping• Biosecurity• Climate change: disease, pests, invasive species, droughts, flooding• Damage to signage• Dog fouling• Motorbikes• Accessibility for wheelchairs on main entrance





How do we get there?

Vision & Objectives

Vision for Pevensey Road Local Nature Reserve:

“The Countryside Volunteer Rangers, FORCE (Friends of the River Crane Environment, the London Borough of Hounslow and Greenspace will work together to create and maintain an exemplary nature reserve for community involvement and enjoyment which is beautiful, wildlife friendly, sustainable, resilient to climate change, safe and accessible to all.”

Key objectives for Pevensey Road LNR are:

- To continue to work closely with the Friends and Volunteer group and other users of the facilities to adequately maintain and improve the facilities.
- To ensure that Pevensey Road LNR is a place that is secure, safe to use and is clean and well maintained.
- To ensure that the management of the landscape maintains the heritage character of the park.
- To ensure that the park is promoted and managed to provide a high-quality service for the people using it.
- To continue to encourage and promote community involvement in the management of the park.
- To ensure that the management of the park protects and enhances the biodiversity of the site and borough.
- To promote health and well-being.
- Creating opportunities for connecting green spaces to wildlife and increasing the boroughs ecological resilience and connectivity





Meeting the Green Flag Award Criteria



Management of Pevensey Road LNR

This sets out guidelines and general principles to be followed in delivering the vision and objectives outlined above.

We value diversity and are committed to delivering a service that puts equality of opportunity as a priority. Management of Pevensey Road LNR needs to deliver high standards of maintenance of all aspects of the soft and hard landscaping of Pevensey Road, the management of habitats and the outdoor education programme, within existing revenue budgets and through capital infrastructure funding opportunities.

Delivery Partners

The Council works proactively with the Countryside Volunteer Rangers and with FORCE in consulting with local people regarding their views of the facilities and any impact that is made on their lives. Continuing this working is high priority in relation to the management of the countryside site.

GS are responsible for maintaining all the parks and open spaces within the LBH Parks Service. Maintenance is carried out by the contractors' operatives who have the necessary skills to achieve high and consistent horticultural standards.





A Welcoming Place

The following management priorities help ensure Pevensey Road continues to be a welcoming place.

Entrances

GS regularly manage and maintain all site entrances to ensure they remain accessible for all, secure and free from any obstructions. This includes gate and surface maintenance where required, clearance of leaves, and gritting during icy conditions. As a general policy our parks are not locked at night, as there is evidence that this attracts antisocial behaviour.

Signage

Park signage is kept clean and regularly inspected, any repairs are carried out promptly by GS. Our parks have a variety of signage, including welcome signs at main entrance points, with general site information, community event boards, interpretation signage, and enforcement and warning signage where required. For more information, please refer to the “Marketing Section” below.

Visibility

Where suitable vegetation is managed by GS to help improve site lines for the personal safety of park users across the site. Lighting in our parks is minimised and only considered along main pathways. This approach is generally supported, as there is evidence that lighting can create a false sense of safety, and in fact can attract antisocial behaviour. This approach is supported by Parks for London, the police, and other organisations, developing strategies to help tackle Violence Against Women and Girls (VAWG).

Graffiti Removal

As a part of our aim to make the borough safe, green, and clean we are committed to reducing and removing graffiti. The site will be regularly inspected for graffiti. All graffiti will be removed within 7 days of notification, where the graffiti is racist or offensive it will be removed within 24 hours of notification.

Healthy, Safe & Secure

The following management priorities help ensure that Pevensey Road continues to be a healthy, safe, and secure place.

Health & Wellbeing

We recognise the benefits that our green spaces can make to the health of our residents.

We are committed to developing active environments that enhance leisure, sport, physical activity and play opportunities in priority areas.

Useful Links:

- [Health and Wellbeing Strategy 2023-26](#)
- [Data Hub](#)

Better Points

BetterPoints is an app that rewards residents for getting active. Activities such as walking, cycling, running, and wheeling earn users BetterPoints that can be exchanged for Highstreet vouchers or donated to local charities. You can also earn BetterPoints from attending our Healthy Hounslow services. Find out more [here](#).





Healthy Hounslow

Healthy Hounslow is a partnership between several organisations supporting people in leading healthier lifestyles; to become more active, eat well and stop smoking. The partners that make up Healthy Hounslow are Hounslow Council, West London Trust, Feltham & Bedfont Primary Care Network, MoreLife, Maximus/BeeZee and Lampton Leisure. The services and support offered by Healthy Hounslow are: Smoking cessation, Health and wellbeing coaching, Healthy weight management, Exercise on referral, Cook and eat sessions, and Community NHS Health Checks.

You can find out all about Healthy Hounslow at our website www.healthyhounslow.co.uk



Site Safety

All GS staff and contractors play an important role in terms of a visible staff presence. All are uniformed and where necessary will wear highly visible clothing. All works will have been risk assessed to ensure the highest level of public safety.

LBH and GS maintain close oversight and management of all subcontractors and other agencies working within our parks and open spaces, adhering to CDM regulations and relevant license agreements.

Control of Dogs

Most dog owners act responsibly and keep their pets under control. However, the Council continues to receive comments and complaints from residents regarding the behaviour of some dogs and the actions of a minority of irresponsible dog owners within parks and open spaces.

To address these ongoing concerns, the Council carried out a public consultation during 2025 to gather residents' views on a range of dog control issues. A report summarising the findings from the consultation was presented to Cabinet in late 2025. This resulted in the decision to introduce a dog control Public Space Protection Order (PSPO).

The PSPO includes seven key requirements and restrictions for dog owners and dog walkers. Some of these were previously in place under previous regulations and have now been consolidated in this single, update order.

For more information on the status and findings from the dog PSPO consultation please see the webpage [here](#).

Supported by a borough-wide campaign encouraging dog owners to [Take The Lead](#), the new PSPO will be enforced from 1 March 2026. It sets clearer expectations for dog walkers and gives the Council authority to issue on-the-spot fines to those who don't follow the rules.





Pevensey Road LNR welcomes responsible dog owners, and asks that they to respect the areas managed to promote nature conservation.

Community Safety

Hounslow Community Safety Partnership (HCSP) is responsible for reducing crime, disorder, and substance misuse in the London Borough of Hounslow. Along with other supporting partners, HCSP brings together key local agencies including:

- London Borough of Hounslow – Safer Communities Team
- Metropolitan Police Service (Hounslow Division)
- Hounslow district of the National Probation Service
- Hounslow NHS Trust
- London Fire and Emergency Planning Authority
- [Community Safety](#)

The Council's Enforcement Team have responsibility for overseeing Community Safety in the boroughs' parks and open spaces. They walk through parks to show presence and work with the Parks Team and GS to target regular occurrences of ASB. Occasionally a joint task force operation including those above is required i.e., rough sleeping, food dumping, drinking and drug misuse.

The Council is introducing a new enforcement team in March 2026. The new team will be focusing on fly-tipping and littering, noise complaints and enforcing Public Space Protection Orders (PSPOs). They will also be engaging with local communities and educating residents on how to dispose of waste and recycling correctly.

The team will be equipped with hand-held devices allowing them to identify, capture, report and respond to issues in real-time and reassure residents that issues are being identified and dealt with. Investment in new AI technologies and SMART sensors will also be developed to enable fast and targeted responses.



Enforcement officials on a walkabout





The Parks Team has established a Violence Against Women and Girls (VAWG) Steering Group in partnership with the Metropolitan Police. The group meets regularly to review hotspot areas across Hounslow's parks and open spaces that have been identified as priorities within the VAWG agenda. Together, they assess recommendations, explore solutions, and coordinate ongoing projects and work programmes aimed at addressing these issues.

A broad range of stakeholders participate in the group to share current concerns, highlight priority areas, and discuss operational capacity. Representatives include the Met Police VAWG Lead for Hounslow, Police Intelligence Analyst, Parks Team, Safer Communities, Lampton Greenspace Countryside Team, Rough Sleeping Unit, Domestic Violence Reduction Unit, and Gunnersbury Park.

Some of the actions from the steering group have led to:

- Increase police patrol in priority parks
- Community engagement with local residents and thereby increasing natural surveillance
- Removal of hiding spots and management of overgrown vegetation
- Creation of a Safety in Parks poster (in conjunction with the police and their reporting procedures)
- Raising awareness on reporting rough sleeping and supporting rough sleepers to reduce stigma
- Insight and lessons learned sharing
- Deployment of Safer Patrolling officers in Priority parks
- Additionally, they contribute to the WA – BCU (West Area – Borough Command Unit) meetings, which include boroughs of Hounslow, Hillingdon, and Ealing.



Staying safe in our parks

It's important that we all feel safe in parks and open spaces. If you're worried about anything in Hounslow parks, let us or the police, know:

- In an emergency, always call 999.
- If it's not an emergency, call 101 or the easiest way to contact us is online at www.met.police.uk
- To report safety concerns in public places without giving your name (anonymously) visit www.met.police.uk/notices/street-safe/street-safe
- To report ongoing concerns, get in touch with us at customerservice@hounslow.gov.uk

We are working with the police to keep your neighbourhood safe. If you want to find out more and meet your Safer Neighbourhoods team, visit www.met.police.uk/area/your-area





Well Maintained & Clean

The following management priorities are designed to ensure that Pevensey Road LNR is clean and well maintained.

Grass Maintenance

GS employ several different management approaches to maintain grass areas within our parks and open spaces. Generally, grass areas are managed either as amenity grassland, rough grassland, or as wildflower meadow. Within many of our larger parks, the grass is left uncut as part of the annual No Mow May campaign which is also referred to as [Hounslow's Natural Summer](#).

Pevensey Road LNR consists of a mosaic of different habitats, with areas of wildflower meadow and other rough grassland areas.

Rough Grassland

Rough grassland consists of areas which are cut less frequently generally 2-3 times a year. These are usually areas which are less accessible to the public and help support beneficial insects and small mammals, as well as protect features such as boundaries, hedges, and ponds.

Wildflower Meadows

Wildflower meadows are areas which are actively managed and promoted as wildlife areas. They are suitably prepared, sown and protected by GS, to ensure they establish and flourish to help promote pollinators, and to increase the biodiversity within the open space.

Our meadows provide a rich floral display during spring and summer with plants including Ox-eye daisy, Common Birds-foot-trefoil, Black Knapweed, Field Scabious, and Yellow Rattle, though there is a change in the mix of species in flower through the months. These flowers are an important source for nectar feeding species.

As part of the council's commitment to invest in green infrastructure, GS help identify additional areas within our parks and open spaces, which can be managed as wildflower meadow, where suitable and in consultation with Friends groups and other stakeholders.



Volunteers also carry out scything twice a year.





Trees

Trees are an incredibly significant feature in the boroughs parks and open spaces. They provide a variety of benefits not only to visitors but to the overall environment of an area, creating habitats and providing natural shade. They form an important part of the borough's green infrastructure, and this is reflected within the council's [Green Infrastructure Strategy](#).

Tree Maintenance

To ensure that trees continue to contribute to the landscape it is essential that we think about their health and safety. Trees within parks and open spaces are subject to inspection by suitably qualified and experienced GS Arboriculturists. This is to identify and remedy any unacceptable risks to people using the sites, or the removal of trees that are extensively decayed compromising their structural integrity. Tree pruning is only carried out where necessary for risk management purposes or where formative pruning is necessary; this approach allows Hounslow's parks to retain a natural landscape with well-formed specimens.

Hounslow Council works closely with Friends, Councillors and Lampton Services Greenspace tree team to consider the tree population within Pevensey Road Local Nature Reserve to make improvements and ensure that there is continuity in the way that the trees are managed.

Tree Planting

Between 2020 and 2024 the Council set ambitious tree planting targets, successfully planting over 25,000 new trees and whips in parks and open spaces. This formed one of the main ongoing targets set out in the [Green Infrastructure Strategy](#).

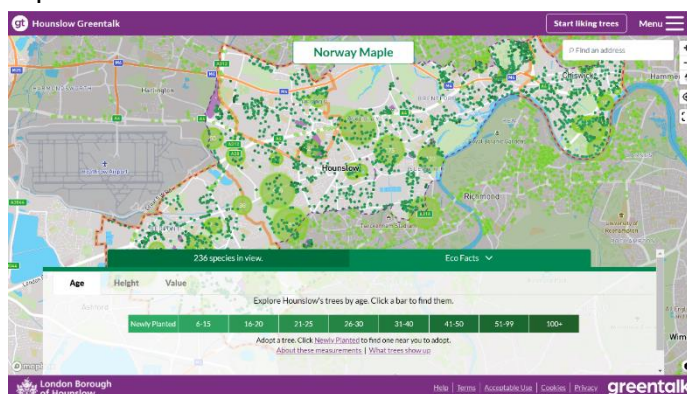
Greentalk

Hounslow Greentalk is an innovative new platform developed as a bespoke resource for Hounslow residents. It has lots of clever features to help explore public trees and make a positive difference to the environment. The platform provides a unique opportunity for Hounslow residents to adopt newly planted trees and help their borough become greener.

Anyone who wants to find out about trees in the borough can use the Greentalk interactive map to explore their area through a tree focused perspective.

Other features include but not limited to:

- Adopting a tree
- Watering notifications
- Green walks
- Tree giveaways



Over 120,000 trees have been mapped, and around 33,000 can be liked by registered users. Liked trees are saved as favourites and can be accessed through the user profile.

The data used to display all the information on Hounslow Greentalk is derived from the council's tree partners who manage the trees in the borough and regularly provide up-to-date information to keep the system as relevant as possible. If a resident is aware of a problem with a tree, Hounslow Greentalk can help them report the exact tree with the right information to the relevant tree partner. For more information, please visit [Hounslow Greentalk](#)





Wetland Management

Sustainable Urban Drainage Design

The Parks team work closely with the Flood Risk team, to help inform on Sustainable Urban Drainage (SUDs) features and design during parks development projects. This approach helps provide ecological and sustainable solutions, to help alleviate flooding within urban areas.

Streams and Rivers

The River Crane is situated alongside Pevensey Road LNR, and the space constitutes an important part of the River Crane corridor. The River Crane is managed by the Environment Agency, and the Parks team and GS have a close working relationship with them to ensure its safe management, helping to promote wildlife along its banks.

Cleansing

The collection of litter is extremely important in maintaining the appearance of Hounslow's parks and open spaces and has a direct effect upon how people treat and respect the site. Litter is collected and bins emptied daily by the GS cleansing crews. Any occurrences of fly tipping are cleared by GS within 48 hours of notification, and we work closely with the Enforcement Team to investigate fly tipping issues where possible.

Park Furniture & Fittings

GS ensure that all furniture is clean and will check benches, notice boards and bins on a regular basis. Items will be cleaned when necessary. Any necessary repairs will be reviewed, and funding opportunities explored with the aim of rectification as soon as possible.

Pathways & Hard Surfaces

Pathways and hard surfaces will be kept clean with litter and leaves removed. Hard surfaces will be maintained in a weed free state. Paths will be kept in a good state of repair and all paths being inspected annually. Any necessary repairs will be reviewed, and funding opportunities explored with the aim of rectification as soon as possible.

Buildings & Structures

There are no buildings in Pevensey Road LNR aside from the remains of waterworks

Environmental Sustainability

The following management priorities outline how Pevensey Road LNR is managed in a sustainable way.

Litter Recycling

All litter is taken to Transport Avenue, the West London Waste Authority site within Hounslow borough. It is then loaded onto trains and taken to an energy waste site in Avonmouth, where it is used as a renewable energy source.

Green Waste Recycling

All green waste is either reused or recycled.

- Grass clippings are spread and left in situ in the park.
- Wood chippings are used on flowerbeds to provide a compost and weed control.
- Other green waste (shrub pruning etc.) is taken to Transport Avenue Waste Disposal Site, where it is then transferred by road to a composting facility for processing.





Pesticides

The use of glyphosate-based herbicides to treat weeds was stopped in 2020, to help promote biodiversity. However, removing the use of herbicides has presented operational challenges, as herbicides have always been considered a cost-effective solution and less labour-intensive results.

Following extensive discussions, it was agreed by Cabinet that glyphosate-based herbicides would be reintroduced for the 2025 season. The reintroduction was necessary due to the increasing prevalence and density of weed growth, the impact of weeds on pathway safety and infrastructure, and the limited effectiveness of manual removal alone. This decision is due to be reviewed again in 2026.

Peat Use

GS do not use peat, or any peat-based products within Hounslow's parks and open spaces.

Infrastructure

GS follow the Council's procurement guidelines when sourcing replacement or new infrastructure items. This includes prioritising products made from recycled and environmentally and sustainably sourced materials wherever possible and financially feasible.

For example, using trees felled onsite for seating and fence work, and sourcing fibreglass heritage litter bins to replace ironwork bins. Products made from tropical hardwood and other unsustainable sources are not used.

Fuel, Fleet & Power Tools

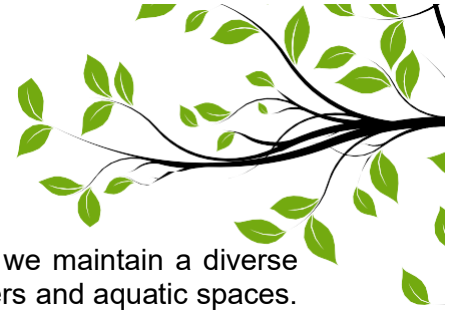
Fleet

As part of an ongoing trial within the Lampton group, the GS fleet use an alternative diesel product, Hydrotreated Vegetable Oil Fuel (HVO). HVO meets OEM fuel specifications and is certified to be a 90% CO2 saving on normal diesel. This efficiency is better than current electric vehicles and is a great stop gap to future technologies given the age of the HGV fleet. It is hoped that a switch to HVO will help GS transition to low carbon technologies in a systematic way, giving time to manage various operational constraints by limiting early adoption of electric vehicles.

Power Tools

GS are continuously trialing the use of electric power tools as alternative to 2 stroke machinery. They currently utilise several battery powered trimmers and blowers and continue to evaluate the effectiveness and development of the technology, and replacing older traditional machinery as it reaches end of life.





Biodiversity & Heritage

We manage our parks and open spaces by ensuring that where possible we maintain a diverse range of age, species and structure in the canopy, understory and herb layers and aquatic spaces. This is achieved by:

- Managing site specific habitats such as acid grassland, mature veteran trees, rivers, ponds, and woodlands.
- Supporting the borough's wildlife through interventions such as birds and bat houses, stag beetle loggeries, aquatic ledges and educational signage.
- Enhancing existing aquatic and terrestrial habitats to support a diverse range of flora or fauna.
- Exploring opportunities to create new habitats such as wildflower meadows, native hedge planting, aquatic ledges, and copses.
- Consider introducing sympathetic mowing regimes where suitable, for example leaving areas of rough grassland around trees.
- Recognising the effects of climate change e.g., drought, wildfires, floods, disease, biosecurity.
- Prioritising sustainability through resilient planting e.g., drought tolerant trees and plants.
- In 2021 LBH commissioned a baseline report of invasive species Parks and open spaces portfolio, surveying 195 sites. This information was used to procure a specialist contractor to remove targeted species over a five-year period beginning in April 2025 and running for 5 years. This will seek to eradicate: Japanese Knotweed, Giant Hogweed, and floating Pennywort, and provide advice on how to deal with Himalayan balsam. The initial round of treatment has been very successful, and we have already seen a reduction in the size and viability of INNS patches.
 - Biosecurity – Anyone responsible for plant supplies must ensure that all plants and associated soil are supplied free of pest and disease at all points in the supply chain. To achieve this, GS consider the latency period and life cycles of all pests and diseases. Special attention to biosecurity is given to imported stock.
 - GS procurement will always prioritise suppliers that are able to demonstrate a supply chain audit trail (for example, are part of a recognised Plant Health Assurance scheme) that ensures plant material sourced within the UK is under a regime of biosecurity-aware production and follow nationally agreed good practice guidelines.
- The Nature Recovery Action Plan (NRAP) is a part of Hounslow's Greener Borough Framework and was adopted in 2023. A stakeholder board -Nature Recovery Stakeholder Board (NRSB) was launched in February 2024 and is led by the Head of Service with quarterly meetings held in various locations across the borough.
- Site of Importance for Nature Conservation (SINCs)
During 2025 LBH identified the need to review the current ecological status of its 47 Sites of Importance for Nature Conservation (SINC) as part of the actions set out in the Nature Recovery Action Plan (NRAP 2023–2028). Although these sites have been assessed in the past, with the most recent assessments carried out in 2012, little information exists about their current condition from which to highlight opportunities to protect and enhance biodiversity value.





Therefore, an ecological appraisal of all 47 individual SINC across the borough was commissioned to establish an updated baseline of habitat types at each site, and their condition. This was conducted by Ecosulis, in the form of a Preliminary Ecological Appraisal (PEA) comprising of the following:

- Desk-based review of existing ecological information provided by LBH and local record centre data, alongside open-source datasets, to identify any legally protected or notable species, and/or habitats that may be present; and
- A field survey to determine current habitat types present on the Site, using the latest UK Habitat Classification (UKHab) methodology and incorporating an assessment of habitat condition; and
- Preparation of a concise report summarising the findings of the desk study and field survey, and details of conclusion and recommendations.

The purpose of the PEA is to identify early opportunities for enhancement to improve biodiversity value at each site, and, where possible, highlight protected and notable species or habitats which may benefit from or be negatively impacted by habitat interventions at the Site. We anticipate all the PEAs on Council land will be available to view via the Council's website by early summer 2026.



Methods used by Ecosulis whilst surveying sites

Habitat management

The landscape and habitats at Pevensey Road LNR are actively managed to protect and enhance species on site. This management regime is carried out throughout the year with surveying done principally in the summer months and proactive habitat management activities completed outside breeding/growing seasons in the winter.

See Appendix 3 for Habitat Works.





Community Involvement

Parks and open spaces foster community cohesion by serving as venues for events, volunteering, and shared activities. Involving residents in the management and decision-making processes of parks ensures that these spaces reflect community needs and values, encourages a sense of ownership, and strengthens stewardship. Active participation not only improves the sustainability and relevance of green spaces but also builds stronger, more engaged communities.

Friends Groups

The Council and Countryside team works closely with the Friends groups and encourages them in their efforts to apply for grants and to organise volunteer days and events. We also engage with other community groups and third parties to encourage and ensure opportunities for the needs and requirements of a diverse borough population.

The Parks Team provide support for applications to the Council's Thriving Communities Fund. More information about the scheme can be found on the Council webpages [here](#).

The Hounslow Friends of Parks Forum holds quarterly meetings and act as a support network that provides networking opportunities for local groups. The forums are facilitated by [Habitats & Heritage](#) who are a west London based organisation who help support new and established Friends Groups.

The Parks team engage with people from a wide range of backgrounds to increase representation and improve access to our green spaces, while also supporting placemaking and a stronger sense of belonging through engagement. This has included working with groups such as the Care Leavers team, the Youth Council, refugees and asylum seekers, Duke of Edinburgh students, faith groups, attending careers fairs at West Thames College, and collaborating with EDI networks and local educational institutions.

Countryside Volunteer Rangers

Set up originally as a TCV Green Gym in 2013, the group of enthusiastic volunteers now managed and led by the Greenspace Countryside Rangers meet every Monday from 10:45am-2:00pm. The volunteers carry out various projects and habitat improvements on site, including the management of the community orchard, reseedling and management of the wildflower meadows and woodland clearance along the river side. The volunteers and Rangers alike are hugely enthusiastic about the site and carry out works to ensure a safe and relaxing park for visitors to enjoy.

In 2013 The Conservation Volunteers (TCV) set up a weekly Green Gym to carry out habitat work on site in partnership with the Countryside Rangers. The group grew in popularity, and the sessions were enjoyed by a varied selection of people from the local community. In 2018 the Countryside Rangers took over the management of the volunteer group and numbers have continued to rise as more people become interested in the conservation efforts on site.

The Countryside team work closely with the community organisations to ensure the park is fully supported as a nature reserve and much valued place of recreation for locals to enjoy. FORCE (Friends of the River Crane Environment) has been hugely supportive of all the work carried out at Pevensey Road Local Nature Reserve and have assisted with habitat management and maintenance tasks running their own volunteer sessions each year.





Volunteering

The Council and GS work with the public to inform, educate, and volunteer in managing habitats through event opportunities and specific projects such as school planting in green spaces, green gyms, tree planting, and habitat surveying. Community involvement and engagement in nature conservation projects helps to increase the health and wellbeing of our residents.

The GS Countryside Team help manage and coordinate several volunteer groups across the borough, working in collaboration with various environmental charities. More information can be found on the Parks Hub webpages [here](#).

The Countryside Rangers, the council and Friends of groups are working closely with the local community to build relations centering around the park. The Rangers and Friends of River Crane run regular nature and fitness walks in Pevensey LNR. This encourages the local community to take an interest in the park and promotes an interest in conservation and wildlife, as well as living a healthy lifestyle and exploring and making use of the outdoors. The Rangers also liaise closely with the neighbouring college, and the students have joined us in the park to carry out litter picks as well as taking part in a tree planting session in the wet woodland. We hope to continue strengthening this relationship through the year and look forward to working with other schools in the borough as well.

Marketing

Promotion and marketing of Pevensey Road LNR is carried out by a range of measures to ensure that local people and visitors to the borough are aware of the facility.

Entrance Signage

The design principles of our recent signage refresh encourage greater user engagement in exercise and outdoor activity by using pictograms and maps to illustrate the facilities available in the park and the surrounding area. It promotes the unique character of each park and its association with the community and presents a consistent London Borough of Hounslow parks identity.

Onsite Promotion

To promote events and activities in our parks, weatherproof posters and banners are used to display up and coming events and activities across the site and promotional materials are shared with local community groups. Noticeboards are also used by the Council and local communities to share upcoming events and activities as they are accessible for all.



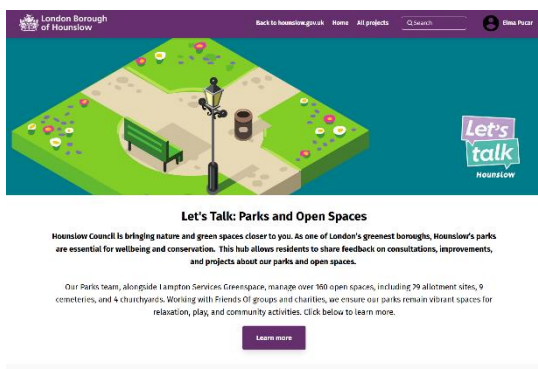


Web & Press

The Council's website has a dedicated Parks and Open Spaces section which can be found [here](#). You can find general information about the service, with useful links, advice, and reporting channels for customers to use.

Parks Hub

The Consultation and Engagement platform Let's Talk Hounslow has a new dedicated Parks Hub which includes current consultations, surveys, and live projects, as well as a digital noticeboard. Since the launch in February 2024, the site has had over 27,800 visitors to the homepage. To view the hub visit [here](#).



Hounslow also has several other websites which are designed to engage with the wider community about our services and the opportunities available in Hounslow.

- Find out what's on [InHounslow](#)
- [Hounslow Nature Network](#) is a new resource bank to connect you with local environmental organisations across London
- A dedicated [Nature and Greenspaces](#) section on Hounslow Connect, the go to platform for local activities, advice, guidance, and support in Hounslow
- Promotion through Go Parks London- <https://www.goparks.london/boroughs/hounslow>
- London National Park City Mini-Guide for Hounslow, celebrating Hounslow's great outdoors [Hounslow's Mini Guide](#)



The Council also has an active social media presence on [Facebook](#) and [X](#) with the handle @LBofHounslow.





To create community awareness for all its facilities the Council regularly produces articles and press releases about activities and facility development. The Council publishes a regular newsletter, Hounslow Matters, which is provided to all residents and includes news and information about our services, including parks and open spaces. To download the latest publication please follow the link [here](#).

To find out more about Pevensey Road LNR visit: www.facebook.com/PevenseyRoadGG

Lampton Greenspace is a part of the Lampton Services Group who have their own social media platforms.

- <https://www.lamptonservices.co.uk>
- X- @TheLamptonGroup
- Facebook- [lamptonservices](#)
- Linked In- [Lampton Services](#)
- Instagram- [@lamptongroup](#)

Events

The Council encourages the hire of parks to appropriate organisations for commercial and community events. Events are held in accordance with the Parks and Open Spaces Events Policy found on the council webpages [here](#).

For Events see the 'Achievements' section





How do we know we have arrived?

Monitoring & Review

This management plan has been designed as a live document that will guide development in the park over the next five years. Progress will be subject to monitoring and review to measure success and delivery of aims.

LBH Parks Officers work closely with GS and the Friends group to monitor progress and discuss future plans. This includes:

- Performance against the requirements of the Management Plan
- Provision and analysis of infrastructure surveys
- Provision and analysis of asset surveys
- Monthly project meetings
- Quarterly Friends Forum
- KPI's and performance monitoring (see Appendix 4)

An annual SWOT analysis will be carried out by all stakeholders and, together with the information gathered from all the monitoring methods will be recorded and fed into annually updated management plans.

GFA Judges feedback and award outcome will enable continuous learning, development and improvement by all partners involved in the award process. Discussed at monthly Parks and GS management meetings and meetings with stakeholder.

Action Planning

Our action plan for Pevensey Road LNR is provided in Appendix 1. This plan is based on an evaluation of the SWOT analysis together with other projects and plans raised by the Friends group. The action plan lists actions and categorises based on timescales and the Green Flag award criteria. The plan will also allocate ownership for each task to the key stakeholders.



Appendix 1



Pevensey Road Local Nature Reserve | Green Flag Award | Action Plan Updated 2026

Key to Action Plan

Green Flag Award Criteria

W	Welcoming Place
H	Healthy, Safe and Secure
VM	Well Maintained and Clean
S	Sustainability
BH	Biodiversity and Heritage
C	Community
Mkt	Marketing
Mgt	Management

Stakeholders

LBH	Parks Service Management Team
GS	Lampton Greenspace
PRGGR	Pevensey Rd Green Gym Rangers
FORCE	Friends of the River Crane Environment
LBRuT	London Borough of Richmond Upon Thames

Delivery Timescales

S	Short term (less than 1 year)
M	Medium term (1 to 3 years)
L	Long term (3+ years)
O	Ongoing

MANAGEMENT ACTION	STAKEHOLDER	GREEN FLAG CRITERIA	TIME-SCALE	STATUS 2026
Habitat management to support the reintroduction of water voles.	LBH, GS, LBRuT	BH	S	River channel and bank work started January 2023. Has been completed
Improvements to main entrance landscape design	LBH, GS, FORCE, PRGGR	W, WM, C	M	Improvements made to entrance by making it more welcoming through picnic tables, tree planting, bulb planting, lavender planting, wood carving, and wildflower meadow. Yet to receive funding/plans to improve new gates.
Resurfacing of existing pathways	GS	W, H, WM	O	
Upgrade to pathway from Pevensey rd. to Calvary tunnel	LBH	WM, C	S	New 450m compact gravel path installed funded by Network Rail.
New main entrance signs to reflect the status as a local nature reserve.	LBH	W, BH	M	Feasibility and design process begun, expected delivery 2025/26
Review signage design in relation to the borough wide signage strategy.	LBH, GS	W, S	M	New signage installed
Anti-Social Behaviour – signage review, continue stakeholder engagement and targeted enforcement	LBH, GS, FORCE, PRGGR	W, H	O	



MANAGEMENT ACTION	STAKEHOLDER	GREEN FLAG CRITERIA	TIME-SCALE	STATUS 2026
Review Green Waste	GS LBH	H, S	S	Any woodchip generated on site is used on site
Continue to maintain a healthy tree stock with a review of opportunities for new tree planting.	LBH, GS	S, W, WM, BH	M	All tree works are carried out by GS in compliance with UK legislation. Tree planting carried out by Friends of Pevensey Road Open Space
Develop plans for increasing habitats and the biodiversity of the site.	LBH, GS, FORCE, PRGGR, LBRuT	BH	S	Discuss with stakeholders.
Add bird boxes & bat boxes, Bat Surveying, and other site appropriate habitats/surveys	LBH, GS, FORCE, PRGGR	BH	M	We will continue to look for funding and opportunities to install more, including wildlife education workshops/events. 2 bird and 1 bat box installed early 2024. Wildflower meadow, daffodil and wood carving installed.
Continue and expand the work with FORCE/PRGGR and the wider community to promote greening activities.	LBH	C	O	
LBH to facilitate events with Hounslow's parks and open spaces as part of an active community engagement agenda.	LBH	C	O	
LBH to facilitate opportunities for Education, Heritage, and culture at the site. To include a schools education programme	LBH, GS, FORCE, PRGGR	C	M	Program to be produced by GS
Continue to publicise the nature reserve through LBH website, social media platforms and notice board. Also, borough wide campaigns, including achievements, initiatives, and announcements.	LBH	Mkt	0	Ongoing
Support other positive promotion of the nature reserve through various media platforms	LBH, GS, FORCE, PRGGR	Mkt	0	Ongoing
Produce a 5-year biodiversity management plan	LBH, GS, FORCE, PRGGR	BH	M	To commission an extended phase 1 habitat survey when funding becomes available.
Bulb planting sessions with the local community to increase communal engagement in urban greening.	LBH, GS, PRGGR	BH, W, C	L	Design has been created and has been delivered by volunteers.



Appendix 2

Annual Maintenance Work Schedules

The following table provides an overview of the annual maintenance work schedules. All frequencies are subject to seasonal variations, resource, and specific horticultural requirements. They are reviewed annually by the Operations Manager at GS to ensure they remain suitable and reflect any significant site changes. See “Meeting the Green Flag Criteria” section for more detailed management information.

Service	Frequency/Management information
GM Summer works (March - October) <i>Amenity grassland cutting</i> <i>Rough grassland cutting</i> <i>Wildflower meadow cutting</i> <i>Hedge & shrub cutting</i>	Managed by the Grounds Maintenance Teams Once every 3 weeks 1-2 cuts per summer season 1-2 cuts per summer season 1 “reduce cut” dependent on horticultural requirements
GM Winter works (October – March) <i>Hedge & shrub cutting</i> <i>Pond clearance</i> <i>Leaf clearance</i>	Managed by the Grounds Maintenance Teams 1 “hard cut” dependent on horticultural requirements As required, dependent upon size and conditions As required, from hard surfaces and grass areas
Cleansing <i>Litter collection & bin emptying</i> <i>Non-offensive graffiti removal</i> <i>Offensive graffiti removal</i> <i>Fly tip removal</i>	Managed by the Cleansing Teams [site specific] Daily, including bank holidays. Within 7 days of notification Within 24 hours of notification Within 48 hours of notification
Infrastructure <i>Cleansing (bins, benches, signs etc).</i> <i>Lighting</i> <i>Buildings</i>	Various teams/management As required, based on visual inspections and reports Inspections and repairs managed by Hounslow Highways All H&S checks conducted, electrical, fire, water, etc.
Trees <i>Tree inspections</i> <i>Tree maintenance</i> <i>Tree watering</i> <i>Tree planting</i>	Managed by the Tree Team Annually Based on previous inspections, prioritised by H&S Summer: May – September (for trees under 3 years) Winter: October – March
Countryside Schedule <i>Site safety checks</i> <i>Conservation management</i> <i>Volunteering sessions</i>	Daily water and fire checks: buoys/banks, BBQs/firebreaks Seasonal dependent on habitat types Frequency dependent on site





Monitoring the Annual Maintenance Work Schedules

Members of the Parks Team conduct site visits to ensure that the work schedules are being adhered to and report issues to GS to resolve where necessary. Customer enquiries relating to maintenance issues are also routinely assessed to ensure they are rectified in a suitable and timely manner.

The Parks team also make use of and refer closely to the guidance provided by Parks for London in their recently updated Green Space Quality Manual. This provides valuable insight and understanding as to “what good looks like” and will help to ensure a consistent approach is taken during routine monitoring.

For more information regarding the tools and approach that will be used for monitoring, please visit the [Parks for London](#) website and download the Parks for London [Green Space Quality Manual](#).



Appendix 3



Habitat Work

Habitat work is also carried out in line with the Pevensey Road Habitat management plan. Please see table below:

	HABITAT WORK	ECOLOGICAL SURVEYS
January	Willow coppicing on 3-year rotation	Birds
February	Orchard pruning Low level vegetation clearance	Birds
March	Orchard Mulching	Birds
April		Butterfly, Moth, and Reptile
May	Early weed growth, nettle thistle removing	Mammals
June	Invasive species- balsam pulling	wild
July	Invasive species- balsam pulling	-
August	Pond clearance, Scything wildflower meadow	-
September	Scything wildflower meadow	-
October	Harvesting apples, tree thinning in the woodland	Fungi, Birds
November	Managing wildflower meadow, planting bulbs in woodland	Birds
December	Scrub clearance- Virginia Creeper, coppicing hazel on five-year rotation	Birds





Appendix 4

Contract Performance & Key Performance Indicators

The London Borough of Hounslow’s Parks team works in close partnership with GS—to deliver and monitor the full range of parks and open-space services across the borough. Lampton Greenspace provides the operational delivery for grounds maintenance, arboriculture, playground inspections, litter control, horticulture, cemetery and allotment management, and countryside services, all in line with the council’s service specification.

Performance of the Parks service is jointly managed through an agreed suite of Key Performance Indicators (KPIs), which are monitored monthly (with some measures being seasonal). These KPIs ensure accountability, drive service quality, and support continuous improvement. They cover outputs such as grounds maintenance standards, tree inspection and management, play area safety inspections, horticultural quality, response times for customer enquiries, and the overall condition and cleanliness of parks and open spaces.

Through this structured performance framework and collaborative approach, the Parks team, and Lampton Greenspace work together to maintain high standards, deliver community value, and support Hounslow’s wider environmental and “Greener Borough” objectives.

Please find a link to a recent cabinet performance report, which includes summary performance data for the Parks service [here](#) and examples below.

Sub Department		KPI	Performance Indicator	Agreed Targets (Annual)	Agreed Targets (Month)	Month Actual	Reported SR Month	RAG Status
AIPP	1.1		Number of Residents on allotment waiting list	700	700	2166	N/A	Pass
AIPP	1.2		% - Allotment Occupancy	90%	90%	94.85%	N/A	Pass
AIPP	1.3		% Visual Playground Visual inspections to be completed weekly	100%	100%	100%	N/A	Pass
AIPP	1.4		Production of operational playground report by a qualified engineer with images	100%	N/A	100%	N/A	Pass
Arboriculture	2.1		% of planned tree inspections to be carried out Quarterly	90%	90%	100%	N/A	Pass
Arboriculture	2.2		Trees to be inspected within 7 days of notification	90%	90%	100%	0	Pass
Arboriculture	2.3		Planned tree works to be completed each quarter	90%	90%	100%	N/A	Pass
Arboriculture	2.4		Tree Emergencies to be responded to within 3 hours of notification	100%	100%	100%	1	Pass
Cemeteries	3.1		% Burial service to be implemented within 7 days of request	100%	100%	100%	N/A	Pass
Cemeteries	3.2		24hr Burial service provided and implemented for religious denominations	100%	100%	100%	N/A	Pass
Cemeteries	3.3		Completed Grounds Maintenance programme	100%	100%	100%	N/A	Pass
Cemeteries	3.4		% Maintenance programme completed for chapels, including cleansing before use	100%	100%	100%	N/A	Pass
Countryside	4.1		Volunteer hours from Community and corporate activities	10,000	833.3	896	N/A	Pass
Countryside	4.2		Education Numbers - Total number of children and adults participating in environmental education	4,500	375	767	N/A	Pass
Grounds Maintenance	5.1		% Fly tips to be removed within 48hrs of notification	90%	90%	98.95%	95	Pass
Grounds Maintenance	5.2		% Abandoned Vehicles to be removed within 7 days of notification	95%	95%	100%	0	Pass
Grounds Maintenance	5.3		Overflowing litterbins and excess litter to be responded to within 48hrs of notification	95%	95%	100%	0	Pass
Grounds Maintenance	5.4		% Graffiti to be removed within 7 days of notification	95%	95%	100%	0	Pass
Grounds Maintenance	5.5		% Offensive graffiti to be obscured within 24hrs and removed within 7 days of notification	100%	100%	100%	0	Pass
Grounds Maintenance	5.6		Total Number of graffiti incidents reported	N/A	N/A	0	0	Pass
Grounds Maintenance	5.7		Defective/Dangerous materials or items to be responded to, repaired or isolated within 4 hours	100%	100%	100%	1	Pass
Grounds Maintenance	5.8		% Planned works completed for grass mowing	100%	100%	N/A	N/A	Pass
HSEQ	6.1		% Service Contracts Implemented as part of FM management	100%	100%	100%	N/A	Pass
HSEQ	6.2		Number of RIDDOR reportable incidents	N/A	N/A	0	N/A	Pass
HSEQ	6.3		Number of H&S Incidents reported (Non-Riddor)	N/A	N/A	3	N/A	Pass

Example of monthly KPI report provided by GS





Parks Summary - October 2025

PGID0001 - Volunteer Hours
- 1699

Decrease of 496 hours from previous month. Likely as a result of decrease hours of daylight as winter progresses as well as weather and less events taking place in parks



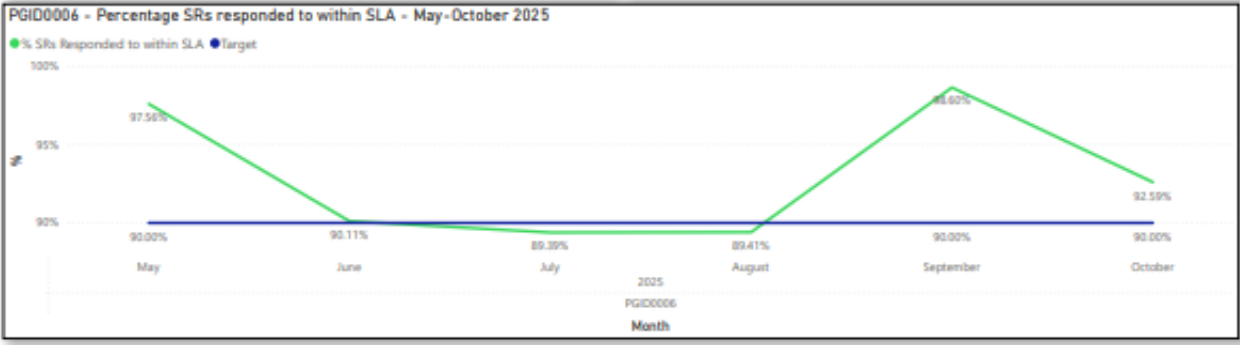
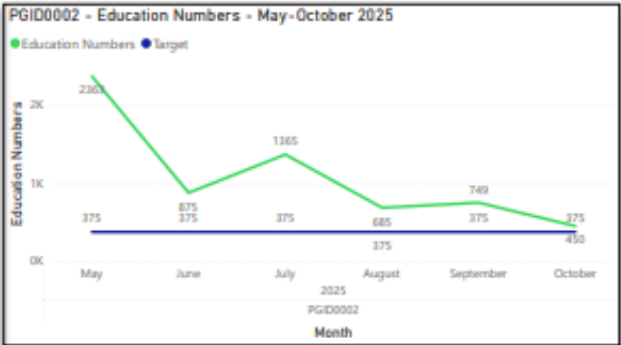
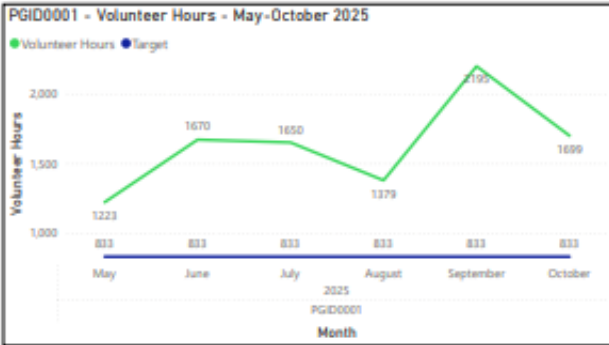
PGID0002 - Education Numbers
- 450

Decrease of 299 people receiving environmental education. This is likely to due changes in weather & hours of daylight. As well as October half term holiday, where less school groups are receiving education.



PGID0006 - Percentage SRs responded to within SLA
- 92.59%

As we collect more data on this KPI, performance continues to improve. A 2% increase from last month, despite an increase of 32 SRs.



Example of Monthly Performance Cabinet Report - Parks







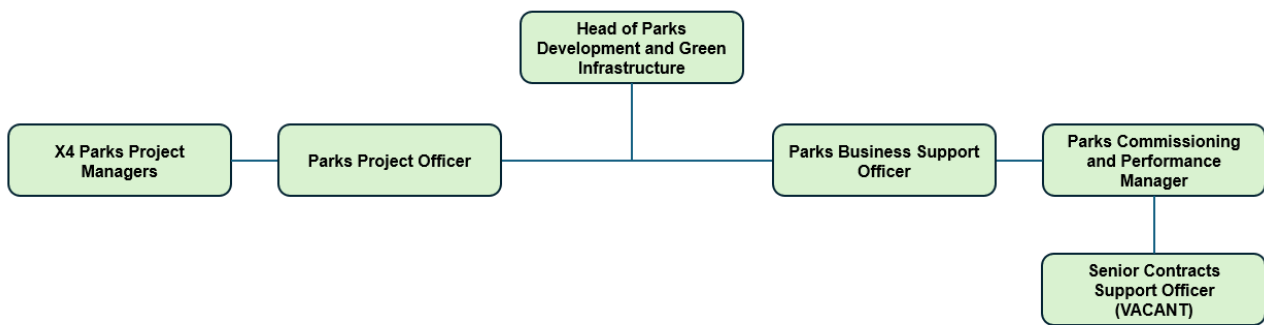
Appendix 5

Management Structure & Responsibilities

Pevensey Road Local Nature Reserve is owned and managed by the LBH and maintained by GS. Information below sets out the management structure and describes the roles and responsibilities of the key personnel involved in managing and maintaining the site.

LBH Parks Service Management Structure

The Environment and Culture Directorate provide the following roles who are responsible for the management, and associated roles, of Hounslow's parks and open spaces:



LBH Head of Parks Development & Green Infrastructure

Senior commissioning role for the management and partnership with GS, senior advisor in relation to parks and open spaces, strategy and policy development, Member's liaison.

LBH Parks Project Managers (x4)

Project development and management, fundraising, community engagement and consultation, implementation, strategy, and policy setting.

Parks Project Officer

Development and delivery of projects, fundraising, community engagement and support Head of Parks.

Commissioning & Performance Manager

Supplier performance governance and relationship management, Legal and contracts, Planning/Commissioning, Operational Service delivery and business processes/systems.

Senior Contracts Support Officer

Supplier performance, customer service and casework, community engagement and consultation, project support.

Parks Business Support Officer

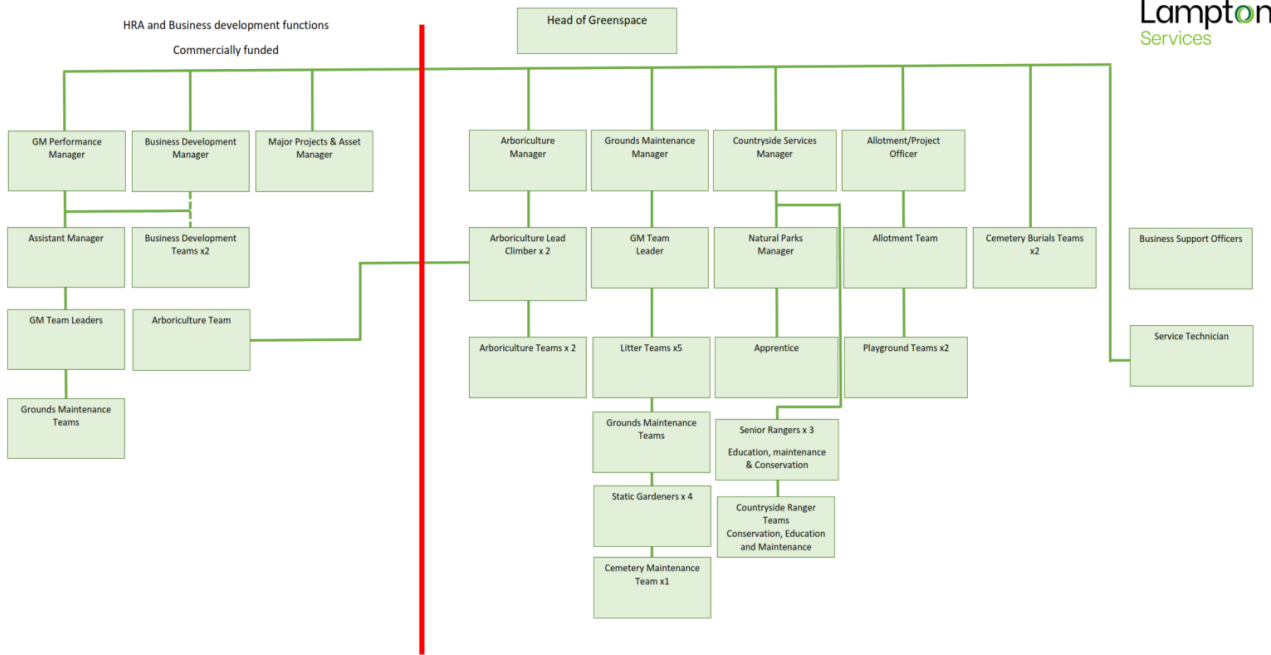
Assistance with finance; administration, project support, lead on Parks communications and web design management.





Lampton Services Greenspace Management Structure

The following GS roles are responsible for the management of Hounslow's parks and open spaces:



Head of Service

Responsible for the ground's maintenance service provision. Oversees the delivery of the specification which includes infrastructure.

Projects Manager including the Allotment Service

Responsible for the development of park infrastructure, management of the allotment service, overseeing horticultural standards, schemes, and developments. Main contact for contractors (CDM). Friends and Member liaison.

Countryside Manager

Responsible for the management of the borough's countryside service. This role includes the management of the Ranger team and educational, animal husbandry, environmental and wildlife operations/programs associated with these locations.

Planned Maintenance Manager

Responsible for the management of the operational resources to deliver the ground maintenance services for the parks and open spaces sites.

Performance and Support Officer

Customer Service functions- Freedom of Information (FOI), customer enquiries, councillors' enquiries, and monthly statistics; technical project support.





Tree Team Manager

Responsible for the teams that carry out the inspections and maintenance of the boroughs 85,000 park trees. Oversees all tree planting schemes for the council and community groups in parks. Managing and mapping/recording of invasive species. Planning application guidance to LBH.

Playground Inspectors x2

Visual, operational, and minor repairs of playgrounds. Inspected annually external contractor.

Operational Teams

Ground maintenance is delivered using mobile teams. These teams provide the Grass cutting, horticultural tasks, general maintenance, litter bin emptying, and litter picking.

Business Support Officer

Provides administration for fleet, handles finances and overtime schedules.



London Borough of Hounslow

Hounslow House, 7 Bath Road

Hounslow TW3 3EB

www.hounslow.gov.uk

Tel: 0208 583 5555



**London Borough
of Hounslow**

Lampton
Services
Greenspace