

GREEN FLAG MANAGEMENT PLAN 2026

Lampton Park



London Borough
of Hounslow



Lampton
Services
Greenspace



Foreword

The London Borough of Hounslow has some superb greenspaces that everyone can be proud of. They are places where people can relax, enjoy nature, play, or take part in cultural and historic activities and recreation. They are essential for the health and well-being of our residents, and they are vibrant spaces that provide a borough-wide green infrastructure for our communities.

In Hounslow, we are committed to stimulating a strong and robust green recovery related to our Greener Borough Framework and Climate Emergency. The Council's Green and Blue Infrastructure Strategy plays a major role in delivering the Greener Borough Framework and sets out key priorities for our greenspaces in areas such as health and wellbeing, regeneration, climate change and nature recovery.

The London Borough of Hounslow considers the Green Flag Award process as a tool towards positively developing our greenspaces within this strategic framework and in partnership with our communities. It contributes to providing a vision, with clear objectives and priorities for how the Council and its partners would like to see greenspaces managed in future years.

This plan is not only the commitment from the Council to improve our greenspaces but is an important recognition of the support and commitment of the friends of parks, community groups, local clubs, third sector and partners who share our visions and work with us to respond to our green agenda.

Acknowledgements

This plan has been produced by the London Borough of Hounslow (LBH) Parks Team and Lampton Services Greenspace* (GS) with input from Friends of Lampton Park. In addition, it is important to acknowledge the great contribution from all interested groups for their commitment and dedication in supporting the development, promotion, and management of Lampton Park.

*Lampton Services Greenspace (GS) is part of the Lampton Limited Group and is a company wholly owned by London Borough of Hounslow with an aim of returning value to the Council representing a bold new ambitious approach.





Contents

Foreword	1
Acknowledgements	1
Purpose of the Plan	3
Where are we now?	5
Site Description & Facilities	5
Detailed History	6
Recent Achievements	8
Where do we want to go?	14
Green Flag Analysis	14
SWOT Analysis	15
How do we get there?	16
Meeting the Green Flag Award Criteria	17
A Welcoming Place	18
Healthy, Safe & Secure	18
Well Maintained & Clean	23
Environmental Sustainability	26
Biodiversity & Heritage	28
Community Involvement	30
Marketing	33
How do we know we have arrived?	40
Appendix 1 – Action Plan	41
Appendix 2 – Ecological Survey 2023	44
Appendix 3 – Annual Maintenance Work Schedule	45
Appendix 4 – Contract Performance & Key Indicators	47
Appendix 5 – Management Structure & Responsibilities	49





Purpose of the Plan

The Management Plan for Lampton Park has been prepared by LBH and GS with input from the Friends of Lampton Park. The plan is specifically developed for the individual site with a dedicated Green Flag Action Plan.

This plan has been developed following detailed assessment of the Green Flag Award criteria and a comprehensive collaborative review of the existing uses, management, and maintenance of Lampton Park.

As part of the development of the plan, detailed consultation has taken place with GS parks maintenance and management team and LBH officers and Friends groups.

The Management plan is a 'working document' that brings together all the information relating to Lampton Park and will be updated, revised, and annually reviewed. This plan has been developed based on the Commission for Architecture and the Built Environment (CABE) Space document "*A Guide to Producing Park and Greenspace Management Plans*" and the "*Green Flag Award Guidance Manual*" guidelines.

Policy & Strategic Context

Actions and aims within this management plan are both guided by, and relate back, to wider Council strategies. The development of parks and open spaces are a vital component of the Council's Corporate Plan 2022 – 2026. Our work during this period is focused on six priority ambitions for a borough that is greener, healthier, cleaner, thriving, safer, and livable. Green infrastructure contributes in many ways to helping us achieve these priorities.

A key approach of Hounslow Council is working under the concept of "One Hounslow" where services are delivered without silos, working for specific outcomes with several internal council departments, community groups, NGOs, and government bodies. Whilst also attracting external investment and developing new partnerships through the Regeneration Service's Business Case for Growth.

Parks and open spaces play an important role in the approach highlighted in the Council's Joint Health and Wellbeing Strategy with start, live and age well, preventing ill health, which in turn has an impact on reducing costs within the wider economy, the Council, and the NHS.

The Council's Equalities and Diversity Strategy 2023, created to improve equality, diversity, and inclusion - sets out an ambitious approach to target policies and funding to the areas which need them most to thrive. The strategy is based on three pillars - Equality by Place, Equality by Group, and Equality as Employer. Hounslow Council has committed to transform the opportunities and life-chances of communities in the borough's 30 most disadvantaged neighbourhoods.

The Council approved the Greener Borough Framework 2020-30 which seeks to provide a high-level framework to deliver on the Council's ambition and aspirations for the borough through enhancing our environment and reducing our use of resources. The framework is part of a wider ambitious green agenda bringing different people and organisations together to discover, engage, innovate, and deliver.





The adoption of the Green and Blue Infrastructure Strategy and Nature Recovery Plan are the pillar of the strategic framework for the development of our parks and open spaces and their management plans through the Green Flag Award process.

Useful Links:

- [Corporate Plan 2022-26](#)
- [Climate Emergency](#)
- [Green Infrastructure Strategy](#)
- [Greener Borough Framework](#)
- [Nature Recovery Action Plan](#)
- [Equalities, Diversity and Inclusion Strategy](#)
- [Hounslow Joint Health and Wellbeing Strategy 2023-2026](#)
- [Opportunity Hounslow: Our Business Case for Growth](#)

Parks Funding

The Council's Parks service is funded by a revenue budget for ground maintenance which are provided by our service providers, Lampton Services Greenspace, who maintain Hounslow's parks and open spaces, including allotments, cemeteries, trees, countryside and other workstreams.

In addition to this, the Parks and Open Spaces team sits within the Council's Environment Services directorate focusing on capital investment, contract and performance management, income generation and other initiatives. This is funded through core revenue funding and capitalisation.

Current capital funding has been allocated through a parks improvement programme, active since 2023. This funding covers project delivery and staff resourcing. Other capital funding is obtained via Community Infrastructure Levy (CIL); S106, the Councils Thriving Communities fund (local CIL), [Green Investment Fund](#), and other grants and initiatives. These are applied for annually or as necessary and are based on need and strategic investment required by both the Council and local communities.





Where are we now?

Site Description & Facilities

Lampton Park surrounds Hounslow's former Civic Centre and consists of two main areas. The north with playing fields, area of landscaping including the Covid Memorial Garden and the south which is the more formal park that includes the playground, tennis courts, flower beds, small pond, and historic monuments. The west entrance from Harte Road is an area maintained for nature conservation. The park is surrounded by native and non-native trees and on the site of the old crazy golf course there is a nature area and a cycling hub as you enter from the west Bulstrode Avenue entrance.



Site Information

Name: Lampton Park

Contacts: 020 8583 5555

Web: www.hounslow.gov.uk

Designation: Open Space

Size: 3.14ha

Byelaws: Visit the [Park rules and byelaws | London Borough of Hounslow](#) page to download

Access: open access at all times

Transport: Train: Hounslow Station

Buses: H20/120

Address: Lampton Road, Hounslow

Email: parks@hounslow.gov.uk

Ownership: London Borough of Hounslow

Tube: Hounslow Central

Parking: Limited Street parking

Local Facilities: Playground, tennis courts, nature area, flower beds, rose garden, memorial garden, pond, and orchard.



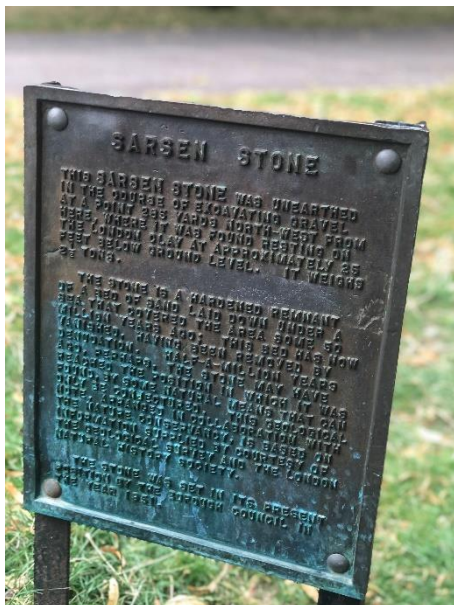


Detailed History

Lampton Park was laid out on land previously used for agriculture, part of which was an orchard, which was purchased for c. £10,000 by the Heston & Isleworth Urban District Council in 1925, and which eventually opened in 1930, the delay caused by some controversy over the elaborate nature of the plans when the Council applied to the Ministry of Health for approval of a loan of £12,809 for the cost of layout. It was opened on 31st May by George Lansbury MP, First Commissioner of Works, at 'a memorable function in the history of the urban district', the entertainment included musical performances, dancing, gymnastics, community singing and exhibition tennis and bowls matches.

It was laid out by the Park Superintendent, with a large and elaborate rose garden as its main feature. Sports facilities for bowling, putting and tennis were provided as well as for cricket, hockey, and rugby. Lampton Park was one of the parks used for the Charter Celebrations in October 1932 when the UDC became a Borough Council.

In 1951 a Sarsen Stone was set up in the park, which had been unearthed in 1926 from a pit of the Hounslow Sand and Gravel Co.'s works at Heston.



Five Irish yew trees, over 210 years old, were transplanted from the grounds of Heston Manor House to the new park and the bandstand was 'the last word in respect of acoustic properties. The main feature of the park was the large rose garden, 130 ft in diameter, with central circular lily pond. In 1928, the Park Superintendent described the proposed layout of the rose garden, which was to accommodate some 1,250-1,400 roses planted in groups of colours: 'hybrid tea, hybrid perpetuals and dwarf polyantha varieties would be chiefly grown.

Standards would form centre dot plants in each of the circular beds. Surrounding the garden on each side would be a shelter belt of trees and shrubs, and along the inner face of these shrubberies' rambler roses grown in pillar fashion would complete the scheme.' A 100-ft greenhouse was also proposed: 'one of the most important assets in public park work is the provision of a suitable plant nursery'.





The sports provision in the new park included hard and grass tennis courts, a bowling green and 18-hole putting green with a small pavilion built to serve as a ticket office.

Other areas were provided for cricket, hockey, and rugby. Both images above were taken of the park around 1965.

A Sri Chinmoy Peace Mile was established in Lampton Park. Sri Chinmoy was an important advocate for world peace, and a keen runner; the first example of a Peace Mile had been set up in London in the International Year of Peace, 1986.





Recent Achievements

Aspirations 2026:

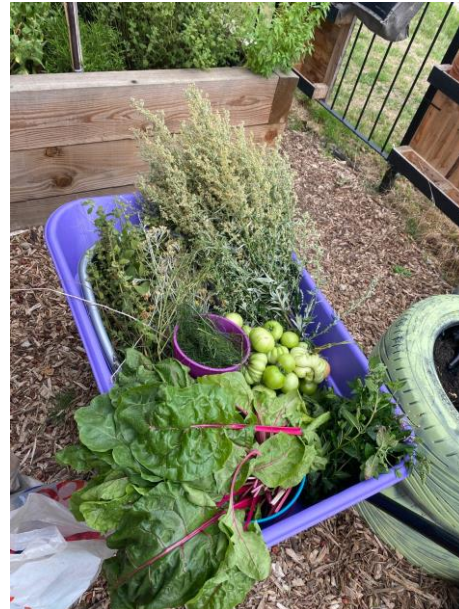
- Design prepared by Landscape Architect – Scheffel Landscape Architecture for Make your Mark, to explore delivery of works in late 2026.
- Clear and restore the Lampton Park orchard
- Developing pond/water feature (ornamental and SUDs)
- Creation of more wildlife areas and habitats.
- Development of an improved perimeter pathway with distance marking across open space and woodland.
- Park run location.
- Creation of an active space within the old mini golf area.
- Development of sports facilities such as cricket strip or goal posts.
- Collection spot for needles and sharps
- Community orchard enhancements
- More differential planting for biodiversity such as native shrub planting and tree belts.
- Honouring victims who have lost their lives in the park to highlight their existence.
- Women centred activities
- Old traditional sports-based events
- Autumn/Christmas community events
- Meditation and yoga space for the summer
- Local community café for senior citizens, vulnerable adults and dog owners.
- Upgrading the woodland as part of the health and wellbeing project for local communities.

Achievements 2025

Lampton Park has begun to receive several improvements to the space in 2025/26 as part of a Make your Mark project. A project which examines opportunities to address some of the VAWG (Violence Against Women and Girls) issues through increasing wayfinding, improving existing entrances/exits, develop seating areas, create interpretation boards, and increase activation, in a bid to make our parks safer, accessible, and inclusive. Some of the improvements include relocation of the cycle hub storage hub container to increase natural surveillance, installation of bird and bat boxes, woodland management, pond restoration and extending the community garden.

Lampton Park Community Garden has taken place for another year, with Cultivate London's presence ending and the site being managed by the Parks team and Friends of Lampton Park. The garden has been increased to approximately 20m² to allow for further planting. There are a variety of individuals who are Lampton Park Community Gardeners, with individuals joining who are Refugee and Asylum Seekers, Young people, Care leavers, individuals with SEND and DofE students.





The Friends of Lampton Park have been actively involved in the Lampton Park Community Garden and Lampton Park Improvements such as delivering pond restoration set for early 2026. They have also delivered community engagement sessions such as Mindful Lampton to support individuals combat social isolation, encourage community cohesion and connection with nature. They had held a Wildflower Seed Sowing Day around the pond and at the COVID memorial garden with Habitats and Heritage and Lampton Greenspace's Countrysides Volunteering in Park sessions. They were also joined by some students from West Thames College.





MINDFUL LAMPTON
Forget Me Not

Join the Friends of Lampton Park to commemorate our loved ones in a peaceful and reflective space.



Wildflower meadow prep dates
 Thursday 13 March, 2pm - 4pm
 Thursday 20 March, 2pm - 4pm

COVID memorial and wildflower sowing event
 Sunday 6 April, 10am - 1pm

Featuring a wildflower seed sowing ceremony, symbolising the growth and remembrance of those we've lost. Followed by warm tea, coffee and meaningful conversations

Meeting point:
 Lampton Park Pond,
 Lampton Rd,
 Hounslow
 TW3 4LD



Lampton London Borough of Hounslow



Volunteering in Parks

269 volunteer hours in 2025, an increase from 256 the year before, with several tons of litter removed, encroaching scrub removed around the entrances to allow safer sightlines and promoting safe and welcoming entrances. Also continued maintenance of the wildflower beds and covid memorial garden through weeding and reseeding. This group in particular has been a hugely diverse group of volunteers including several refugees housed in local hotels. They have benefitted incredibly from the regular meetings, practicing their English, learning new skills, and socialising. We have had several adults with additional learning requirements join the groups to gain some valuable practical knowledge and skills.





- Brentford Football Club sponsored a bench as part of its “talking is the best tactic” campaign [Brentford create space for mental health conversations with community benches | Brentford Fc | Brentford FC](#)

Achievements 2024:

Lampton Park Community Garden has been established on a former rose bed beside the tennis courts, funded by a small pot of funding and as part of the Grow for the Future project by the UK Shared Prosperity Fund. The garden contains four raised beds, fencing, a gate, vertical planters, tyre planters, a wormery, composter, bug hotel, and wildflower meadow. It also has a domestic water butt which is attached to a storage container. In this space from May 2024 till December 2024, pop up workshops have been held by Cultivate London and Urban Trailblazer which residents and Lampton School students have attended to learn about food growing, share their own knowledge and contribute to a community harvest.



From this, Friends of Lampton Park has been established, of which they have plans to develop night walks, bat walks, nature walks, community events and protection of the current ecology and wildlife within the space.

As part of our Access Improvements and Urban Greening project, the former flower beds surrounding the pond were converted into wildflower meadows and home to two bug hotels, to encourage pollinators and wildlife. This was planted in conjunction with the Volunteering in Parks program, delivered by the Countryside team, commissioned by the UK Shared Prosperity Fund.





In December 2024, winter woodland works took place to raise the canopy, create natural surveillance, and tidy up overgrown vegetation as an opportunity to encourage more use of the space, sense of belonging and eyes on the park. This will look to see a natural trail developed in 2025/26. Works included reducing undergrowth and creating several pathways, clearing vegetation, coppicing hazel, thinning out trees and raising tree canopy.

Lampton Park discussed and explored through a VAWG in parks and open spaces steering group, which involves stakeholders such as police, community safety, countryside, rough sleeping unit, and domestic violence unit.

Established new Volunteering in Parks initiative program – Lampton park being one of six sites across the borough. Led by Lampton Services Greenspace Countryside Team, funded by the UK Shared Prosperity Fund. On average has encouraged 67 volunteers and occurs every Thursday from 2pm – 4pm and the first Sunday of every month.



Achievements 2023:

The inspiration of a new planting bed at the flagpole was a key improvement to the main site entrance. In addition, new signage across the site has improved wayfinding and mapping, drawing visitors through and into new parts of site and highlighting key amenities.

Achievements 2022:

In 2022, the COVID memorial orchard was founded, and repairs were made to the paths. Additional planting work to augment the flagpole area was commissioned, to be completed in 2023. A mystery shop conducted; identified infrastructure issues including the bins, signage, and gates. Works to remediate these issues were immediately scoped and implemented where possible, including restoration of grass damaged by vehicle movements and new planting to rejuvenate the ornamental area of the park. Signage has been restored as part of the signage programme, and a larger corporate property review has been addressing some of the building issues within the park.





Achievements 2020/2021:

During 2020 and 2021, the tennis courts were fully refurbished, including new playing surface, nets, and perimeter fence. The access gates at Harte Road were repaired. A programme to repair potholes started and play area repairs were carried out.





Where do we want to go?

Green Flag Analysis

The ambition for LBH in partnership with GS and community groups is to continue to work to improve standards and develop parks and opens spaces strategically according to corporate priorities and local needs.

A clear connection between the criteria identified by the Green Flag Award Scheme and the main points gained from the SWOT analysis and site review completed with the Lampton Park interested individuals has helped to establish a comprehensive management plan for this site.

The management plan process is described below the section “How do we get there?.”

Consultation & Co-design

The Council has a strong partnership with the Friends of Lampton Park. Co-designing the future of the park together in most initiatives and opportunities.

Continuous dialogue is in place through regular communication and a quarterly forum where Friends discuss wider issues and learn from each other to improve overall management standards.

LBH works in close partnership with GS with monthly project and development team meetings where the monitoring and progress of these plans are discussed.

LBH engage annually with Friends groups and community groups in compiling these management plan and their progress.

Ward Councillors and the Lead Cabinet Member for Recreation, Public Spaces and Parking are regularly updated on parks development projects and strategies.

Liaison with the Hounslow Met Police and the Councils Enforcement Team on matters around ASB and public safety.





SWOT Analysis

A SWOT analysis is a management critique to identify Strengths, Weaknesses, Opportunities and Threats to help shape future improvements.

<p>STRENGTHS</p> <ul style="list-style-type: none">• New signage• Noticeboard available to highlight environmental and volunteering opportunities.• Development of community garden• Large play area• Resurfaced tennis courts and new nets• Nature areas• Covered seating.• Restored memorial garden.• Orchard in place on site• Repurposed toilet block to create a pre-school Nursery.• Bike club (for those learning to ride a bike)• Extensive path network for physical activity• COVID memorial orchard thriving.• Friends group established• Use of sports pitch• Community activities – Mindful Lampton• Night walk with police• Ecological improvements – pond restoration• Sustainable reuse of Lampton Park materials in Lampton Park Community Garden• Friendship bench to be a continuous project to encourage dialogue.	<p>WEAKNESSES</p> <ul style="list-style-type: none">• Park entrances run down• Derelict features need removing such as old buildings• Conditions of paths (potholes)• Rock garden maintenance• Condition of signage• Condition of soft landscape features• Infrastructure reaching end-of-life – bins, gates, pathing, and other items require replacement.• Pond restoration needed.• Lack of signage to the COVID memorial garden• Lack of seating and bin provision• Bedding is not managed• Circular bed maintenance• Cross council team presence.• Coordination of volunteering groups in the park.
<p>OPPORTUNITIES</p> <ul style="list-style-type: none">• New benches• Repurposing buildings• Promote more community events.• Entrance improvements• Signage where community engagement has taken place• Bat walk• Outdoor gym• Perimeter pathway is around the field and woodland.• Creating awareness on how to report crimes in parks with Met Police and Safer Communities and other community groups.	<p>THREATS</p> <ul style="list-style-type: none">• Anti-social behaviour and vandalism.• Oak Procession Moth (OPM)• Pressures on current facilities due to increased development• Climate change/disease/drought/pests and invasive species• Pressure due to high footfall on site (connected to events)• Reputational damage due to recent crime events• Fly tipping• Rough sleeping• Some dogs on lead and some off lead• Fireworks being combative to nature recover efforts.



How do we get there?



Vision & Objectives

Vision for Lampton Park:

“Lampton Park user groups, the London Borough of Hounslow and Lampton Services Greenspace will work together to create and maintain an exemplary centre for community involvement and enjoyment which is beautiful, wildlife friendly, sustainable, resilient to climate change, safe and accessible to all.”

Key objectives for Lampton Park are:

- To continue to work closely with Lampton user groups of the facilities to adequately maintain and improve the facilities.
- To ensure that Lampton park is a place that is secure, safe to use and is clean and well maintained.
- To ensure that the management of the landscape maintains the heritage character of the park.
- To ensure that the park is promoted and managed to provide a high-quality service for the people using it.
- To continue to encourage and promote community involvement in the management of the park.
- To ensure that the management of the park protects and enhances the biodiversity of the site and borough.
- To promote health and well-being
- Creating opportunities for connecting green spaces to wildlife and increasing the boroughs ecological resilience and connectivity





Meeting the Green Flag Award Criteria



Management of Lampton Park

This sets out guidelines and general principles to be followed in delivering the vision and objectives outlined above.

Management of the open space needs to deliver high standards of maintenance of the soft and hard landscaping of Lampton Park within existing revenue budgets and through capital infrastructure funding opportunities.

Delivery Partners

The Council works proactively with the Friends of Lampton Park in consulting with local people regarding their views of the facilities and any impact that is made on their lives. Continuing this relationship is a very high priority for the management of the open space.

GS are responsible for maintaining all the parks and open spaces within the LBH Parks Service. Maintenance is carried out by the contractors' operatives who have the necessary skills to achieve high and consistent horticultural standards.





A Welcoming Place

The following management priorities help ensure Lampton Park continues to be a welcoming place.

Entrances

GS regularly manage and maintain all site entrances to ensure they remain accessible for all, secure and free from any obstructions. This includes gate and surface maintenance where required, clearance of leaves, and gritting during icy conditions. As a general policy our parks are not locked at night, as there is evidence that this attracts antisocial behaviour.

Signage

Park signage is kept clean and regularly inspected, any repairs are carried out promptly by GS. Our parks have a variety of signage, including welcome signs at main entrance points, with general site information, community event boards, interpretation signage, and enforcement and warning signage where required. For more information, please refer to the “Marketing Section” below.

Visibility

Where suitable vegetation is managed by GS to help improve site lines for the personal safety of park users across the site. Lighting in our parks is minimised and only considered along main pathways. This approach is generally supported, as there is evidence that lighting can create a false sense of safety, and in fact can attract antisocial behaviour. This approach is supported by Parks for London, the police, and other organisations, developing strategies to help tackle Violence Against Women and Girls (VAWG).

Graffiti Removal

As a part of our aim to make the borough safe, green, and clean we are committed to reducing and removing graffiti. The site will be regularly inspected for graffiti. All graffiti will be removed within 7 days of notification, where the graffiti is racist or offensive it will be removed within 24 hours of notification.

Healthy, Safe & Secure

The following management priorities help ensure that Lampton Park continues to be a healthy, safe, and secure place.

Health & Wellbeing

We recognise the benefits that our green spaces can make to the health of our residents. We are committed to developing active environments that enhance leisure, sport, physical activity and play opportunities in priority areas.

The Councils [Playing Pitch Strategy](#) (to be updated in 2026), identifies needs for sports facility improvements and sets out priority projects for delivery in partnership with key stakeholders. We work with Council services to ensure that our approach supports the broader Council strategies around health and wellbeing and together with Leisure Services provided by Lampton Leisure, Traffic and Transport, Public Health, Contingency Planning, Community Development team and the local community we aim to deliver these improvements.





Useful Links:

- [Hounslow Joint Health and Wellbeing Strategy 2023-2026](#)
- [Data Hub](#)

Better Points

BetterPoints is an app that rewards residents for getting active. Activities such as walking, cycling, running, and wheeling earn users BetterPoints that can be exchanged for Highstreet vouchers or donated to local charities. You can also earn BetterPoints from attending our Healthy Hounslow services. Find out more [here](#).



Healthy Hounslow

Healthy Hounslow is a partnership between several organisations supporting people in leading healthier lifestyles; to become more active, eat well and stop smoking. The partners that make up Healthy Hounslow are Hounslow Council, West London Trust, Feltham & Bedfont Primary Care Network, MoreLife, Maximus/BeeZee and Lampton Leisure. The services and support offered by Healthy Hounslow are: Smoking cessation, Health and wellbeing coaching, Healthy weight management, Exercise on referral, Cook and eat sessions, and Community NHS Health Checks.



You can find out all about Healthy Hounslow at our website www.healthyhounslow.co.uk

Lampton Leisure

Lampton Wellbeing delivers a wide range of innovative and essential health programmes across the borough to promote physical activity. From exercise referrals and strength-building classes to dementia support and digital fitness hubs, we help people of all ages live healthier, happier lives. We combine expert knowledge in physical activity, evidence-based medicine, and sustainability to create programmes that truly make a difference — empowering individuals, strengthening communities, and building a healthier future for Hounslow.



Site Safety

All GS staff and contractors play an important role in terms of a visible staff presence. All are uniformed and where necessary will wear highly visible clothing. All works will have been risk assessed to ensure the highest level of public safety.

LBH and GS maintain close oversight and management of all subcontractors and other agencies working within our parks and open spaces, adhering to CDM regulations and relevant license agreements.



Control of Dogs

Most dog owners act responsibly and keep their pets under control. However, the Council continues to receive comments and complaints from residents regarding the behaviour of some dogs and the actions of a minority of irresponsible dog owners within parks and open spaces.

To address these ongoing concerns, the Council carried out a public consultation during 2025 to gather residents' views on a range of dog control issues. A report summarising the findings from the consultation was presented to Cabinet in late 2025. This resulted in the decision to introduce a dog control Public Space Protection Order (PSPO).

The PSPO includes seven key requirements and restrictions for dog owners and dog walkers. Some of these were previously in place under previous regulations and have now been consolidated in this single, update order.

For more information on the status and findings from the dog PSPO consultation please see the webpage [here](#).

Supported by a borough-wide campaign encouraging dog owners to [Take The Lead](#), the new PSPO will be enforced from 1 March 2026. It sets clearer expectations for dog walkers and gives the Council authority to issue on-the-spot fines to those who don't follow the rules.



Lampton Park welcomes responsible dog owners. The play area and fenced sports areas are already dog exclusion zones, and this has been reflected in the PSPO consultation.

Community Safety

Hounslow Community Safety Partnership (HCSP) is responsible for reducing crime, disorder, and substance misuse in the London Borough of Hounslow. Along with other supporting partners, HCSP brings together key local agencies including:

1. London Borough of Hounslow – Safer Communities Team
2. Metropolitan Police Service (Hounslow Division)
3. Hounslow district of the National Probation Service
4. Hounslow NHS Trust
5. London Fire and Emergency Planning Authority
6. [Community Safety](#)

The Council's Enforcement Team have responsibility for overseeing Community Safety in the boroughs' parks and open spaces. They walk through parks to show presence and work with the Parks Team and GS to target regular occurrences of ASB. Occasionally a joint task force operation including those above is required i.e., rough sleeping, food dumping, drinking and drug misuse.



The Council is introducing a new enforcement team in March 2026. The new team will be focusing on fly-tipping and littering, noise complaints and enforcing Public Space Protection Orders (PSPOs). They will also be engaging with local communities and educating residents on how to dispose of waste and recycling correctly.

The team will be equipped with hand-held devices allowing them to identify, capture, report and respond to issues in real-time and reassure residents that issues are being identified and dealt with.

Investment in new AI technologies and SMART sensors will also be developed to enable fast and targeted responses.



Enforcement officials on a walkabout in Lampton Park

The Parks Team has established a Violence Against Women and Girls (VAWG) Steering Group in partnership with the Metropolitan Police. The group meets regularly to review hotspot areas across Hounslow's parks and open spaces that have been identified as priorities within the VAWG agenda. Together, they assess recommendations, explore solutions, and coordinate ongoing projects and work programmes aimed at addressing these issues.

A broad range of stakeholders participate in the group to share current concerns, highlight priority areas, and discuss operational capacity. Representatives include the Met Police VAWG Lead for Hounslow, Police Intelligence Analyst, Parks Team, Safer Communities, Lampton Greenspace Countryside Team, Rough Sleeping Unit, Domestic Violence Reduction Unit, and Gunnersbury Park.

Some of the actions from the steering group have led to:

- Increase police patrol in priority parks
- Community engagement with local residents and thereby increasing natural surveillance
- Removal of hiding spots and management of overgrown vegetation
- Creation of a Safety in Parks poster (in conjunction with the police and their reporting procedures)
- Raising awareness on reporting rough sleeping and supporting rough sleepers to reduce stigma
- Insight and lessons learned sharing
- Deployment of Safer Patrolling officers in Priority parks
- Additionally, they contribute to the WA – BCU (West Area – Borough Command Unit) meetings, which include boroughs of Hounslow, Hillingdon, and Ealing.

Staying safe in our parks

It's important that we all feel safe in parks and open spaces. If you're worried about anything in Hounslow parks, let us or the police, know:

- In an emergency, always call 999.
- If it's not an emergency, call 101 or the easiest way to contact us is online at www.met.police.uk
- To report safety concerns in public places without giving your name (anonymously) visit www.met.police.uk/notices/street-safe/street-safe
- To report ongoing concerns, get in touch with us at customerservice@hounslow.gov.uk

We are working with the police to keep your neighbourhood safe. If you want to find out more and meet your Safer Neighbourhoods team, visit www.met.police.uk/area/your-area





Well Maintained & Clean

The following management priorities are designed to ensure that Lampton Park is clean and well maintained.

Grass Maintenance

GS employ several different management approaches to maintain grass areas within our parks and open spaces. Generally, grass areas are managed either as amenity grassland, rough grassland, or as wildflower meadow. Within many of our larger parks, the grass is left uncut as part of the annual No Mow May campaign which is also referred to as [Hounslow's Natural Summer](#).

Lampton Park is mainly managed as amenity grassland, with some areas of rough grassland e.g., in the northern area of the park. There are also plans to create areas of wildflower meadow as well.

Amenity Grassland

Amenity grassland consists of areas used for general recreation, and formal and informal sports, and can include wide-open spaces or those areas planted with trees and shrubs. These areas are regularly cut during the growing season, to ensure they can continue to be used for recreation throughout the year (see Appendix 3: Annual Maintenance Work Schedule). Grass edges, whether they are against paths, fences or walls will be cut at the same time as the rest of the grass using strimmers in most areas.

Rough Grassland

Rough grassland consists of areas which are cut less frequently generally 2-3 times a year. These are usually areas which are less accessible to the public and help support beneficial insects and small mammals, as well as protect features such as boundaries, hedges, and ponds.

Wildflower Meadows

Wildflower meadows are areas which are actively managed and promoted as wildlife areas. They are suitably prepared, sown and protected by GS, to ensure they establish and flourish to help promote pollinators, and to increase the biodiversity within the open space.



As part of the council's commitment to invest in green infrastructure, GS help identify additional areas within our parks and open spaces, which can be managed as wildflower meadow, where suitable and in consultation with Friends groups and other stakeholders.





Trees

Trees are an incredibly significant feature in the borough's parks and open spaces. They provide a variety of benefits not only to visitors but to the overall environment of an area, creating habitats and providing natural shade. They form an important part of the borough's green infrastructure, and this is reflected within the council's [Green Infrastructure Strategy](#).

Tree Maintenance

Trees within parks and open spaces are subject to inspection by suitably qualified and experienced GS Arboriculturists. This is to identify and remedy any unacceptable risks to people using the sites, or the removal of trees that are extensively decayed compromising their structural integrity. Tree pruning is only carried out where necessary for risk management purposes or where formative pruning is necessary; this approach allows Hounslow's parks to retain a natural landscape with well-formed specimens.

Hounslow Council works closely with Friends, Councillors and Lampton Services Greenspace tree team to consider the tree population within Lampton Park to make improvements and ensure that there is continuity in the way that the trees are managed.

Tree Planting

During 2023-2024 the Council continues to set ambitious tree planting targets, with plans to plant over 5000 new trees and whips in parks and open spaces. This formed one of the main ongoing targets set out in the [Green Infrastructure Strategy](#).

Since 2020, Lampton Park has had around 500 whips and trees planted around the park.

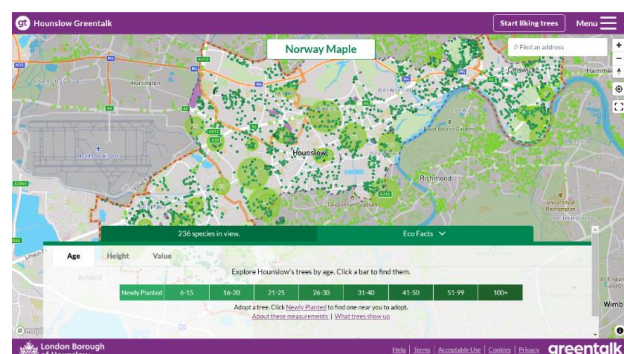
Greentalk

Hounslow Greentalk is an innovative new platform developed as a bespoke resource for Hounslow residents. It has lots of clever features to help explore public trees and make a positive difference to the environment. The platform provides a unique opportunity for Hounslow residents to adopt newly planted trees and help their borough become greener.

Anyone who wants to find out about trees in the borough can use the Greentalk interactive map to explore their area through a tree focused perspective.

Other features include but not limited to:

- Adopting a tree
- Watering notifications
- Green walks
- Tree giveaways



Over 120,000 trees have been mapped, and around 33,000 can be liked by registered users. Liked trees are saved as favourites and can be accessed through the user profile. The data used to display all the information on Hounslow Greentalk is derived from the council's tree partners who manage the trees in the borough and regularly provide up-to-date information to keep the system as relevant as possible. If a resident is aware of a problem with a tree, Hounslow Greentalk can





help them report the exact tree with the right information to the relevant tree partner. For more information, please visit [Hounslow Greentalk](#)

Wetland Management

Sustainable Urban Drainage Design

The Parks team work closely with the Flood Risk team, to help inform on Sustainable Urban Drainage (SUDs) features and design during parks development projects. This approach helps provide ecological and sustainable solutions, to help alleviate flooding within urban areas.

Ponds & Rivers

Lampton Park has a small pond which is in the middle of a circular bedding and seating area, near to the children's playground. Whilst this is only a small feature it has in previous years been managed and maintained with frogs and other invertebrates and insects being present. However, it's been recognised that its management needs to be reviewed to ensure it remains a haven for wildlife and an attractive focal point within the park.



Cleansing

The collection of litter is extremely important in maintaining the appearance of Hounslow's parks and open spaces and has a direct effect upon how people treat and respect the site. Litter is collected and bins emptied daily by the GS cleansing crews. Any occurrences of fly tipping are cleared by GS within 48 hours of notification, and we work closely with the Enforcement Team to investigate fly tipping issues where possible.

Park Furniture & Fittings

GS ensure that all furniture is clean and will check benches, noticeboards, and bins on a regular basis. Items will be cleaned when necessary. Any repairs will be reviewed, and funding opportunities explored with the aim of rectification as soon as possible.



Playgrounds

All playgrounds are visually inspected at a minimum of once per week (based upon site usage), a recorded quarterly operational inspection, and an annual inspection carried out by an independent inspector to ensure the playground meets ROSPA standards. Any hazards identified are dealt with accordingly and where necessary equipment will be cordoned off whilst repairs are scheduled.



Pathways & Hard Surfaces

Pathways and hard surfaces will be kept clean with litter and leaves removed. Hard surfaces will be maintained in a weed free state. Paths will be kept in a good state of repair and all paths being inspected annually. Any necessary repairs will be reviewed, and funding opportunities explored with the aim of rectification as soon as possible.

Buildings & Structures

GS manage and maintain most buildings and structures within our parks and open spaces. All buildings are managed with health and safety concerns being paramount, with regular visual inspections conducted, and all necessary building regulations adhered to (e.g., fire risk assessments etc.).

There are several derelict buildings in Lampton Park which remain safe and secure, with various structural and mechanical surveys and asbestos surveys having been conducted to ensure their safety. As with all park buildings, their use and condition are recorded within a database, and they are recognised within the Corporate Property Future Assets Strategy. The development of a community café is a current aspiration for the future if potential funding can be secured to conduct feasibility studies to renovate one of the derelict buildings.

Environmental Sustainability

The following management priorities outline how Lampton Park is managed in a sustainable way.

Litter Recycling

All litter is taken to Transport Avenue, the West London Waste Authority site within Hounslow borough. It is then loaded onto trains and taken to an energy waste site in Avonmouth, where it is used as a renewable energy source.

Green Waste Recycling

All green waste is either reused or recycled.

- Grass clippings are spread and left in situ in the park.
- Wood chippings are used on flowerbeds to provide a compost and weed control.
- Other green waste (shrub pruning etc.) is taken to Transport Avenue Waste Disposal Site, where it is then transferred by road to a composting facility for processing.



Pesticides

The use of glyphosate-based herbicides to treat weeds was stopped in 2020, to help promote biodiversity. However, removing the use of herbicides has presented operational challenges, as herbicides have always been considered a cost-effective solution and less labour-intensive results.

Following extensive discussions, it was agreed by Cabinet that glyphosate-based herbicides would be reintroduced for the 2025 season. The reintroduction was necessary due to the increasing prevalence and density of weed growth, the impact of weeds on pathway safety and infrastructure, and the limited effectiveness of manual removal alone. This decision is due to be reviewed again in 2026.

Peat Use

GS do not use peat, or any peat-based products within Hounslow's parks and open spaces.

Infrastructure

GS follow the Council's procurement guidelines when sourcing replacement or new infrastructure items. This includes prioritising products made from recycled and environmentally and sustainably sourced materials wherever possible and financially feasible.

For example, using trees felled onsite for seating and fence work, and sourcing fibreglass heritage litter bins to replace ironwork bins. Products made from tropical hardwood and other unsustainable sources are not used.

Fuel, Fleet & Power Tools

Fleet

As part of an ongoing trial within the Lampton group, the GS fleet use an alternative diesel product, Hydrotreated Vegetable Oil Fuel (HVO). HVO meets OEM fuel specifications and is certified to be a 90% CO2 saving on normal diesel. This efficiency is better than current electric vehicles and is a great stop gap to future technologies given the age of the HGV fleet. It is hoped that a switch to HVO will help GS transition to low carbon technologies in a systematic way, giving time to manage various operational constraints by limiting early adoption of electric vehicles.

Power Tools

GS are continuously trialing the use of electric power tools as alternative to 2 stroke machinery. They currently utilise several battery powered trimmers and blowers and continue to evaluate the effectiveness and development of the technology and replacing older traditional machinery as it reaches end of life.





Biodiversity & Heritage

We manage our parks and open spaces by ensuring that where possible we maintain a diverse range of age, species and structure in the canopy, understory and herb layers and aquatic spaces. This is achieved by:

- Managing site specific habitats such as acid grassland, mature veteran trees, rivers, ponds, and woodlands.
- Supporting the borough's wildlife through interventions such as birds and bat houses, stag beetle loggeries, aquatic ledges and educational signage.
- Enhancing existing aquatic and terrestrial habitats to support a diverse range of flora or fauna.
- Exploring opportunities to create new habitats such as wildflower meadows, native hedge planting, aquatic ledges, and copses. An ecological survey was conducted in 2023, see Appendix 2
- Consider introducing sympathetic mowing regimes where suitable, for example leaving areas of rough grassland around trees.
- Recognising the effects of climate change e.g., drought, wildfires, floods, disease, biosecurity.
- Prioritising sustainability through resilient planting e.g., drought tolerant trees and plants.
- In 2021 LBH commissioned a baseline report of invasive species Parks and open spaces portfolio, surveying 195 sites. This information was used to procure a specialist contractor to remove targeted species over a five-year period beginning in April 2025 and running for 5 years. This will seek to eradicate: Japanese Knotweed, Giant Hogweed, and floating Pennywort, and provide advice on how to deal with Himalayan balsam. The initial round of treatment has been very successful, and we have already seen a reduction in the size and viability of INNS patches.
- Biosecurity – Anyone responsible for plant supplies must ensure that all plants and associated soil are supplied free of pest and disease at all points in the supply chain. To achieve this, GS consider the latency period and life cycles of all pests and diseases. Special attention to biosecurity is given to imported stock.
- GS procurement will always prioritise suppliers that are able to demonstrate a supply chain audit trail (for example, are part of a recognised Plant Health Assurance scheme) that ensures plant material sourced within the UK is under a regime of biosecurity-aware production and follow nationally agreed good practice guidelines.
- The Nature Recovery Action Plan (NRAP) is a part of Hounslow's Greener Borough Framework and was adopted in 2023. A stakeholder board -Nature Recovery Stakeholder Board (NRSB) was launched in February 2024 and is led by the Head of Service with quarterly meetings held in various locations across the borough.
- Site of Importance for Nature Conservation (SINCs)
During 2025 LBH identified the need to review the current ecological status of its 47 Sites of Importance for Nature Conservation (SINC) as part of the actions set out in the Nature Recovery Action Plan (NRAP 2023–2028). Although these sites have been assessed in the past, with the most recent assessments carried out in 2012, little information exists about their current condition from which to highlight opportunities to protect and enhance biodiversity value.





Therefore, an ecological appraisal of all 47 individual SINC across the borough was commissioned to establish an updated baseline of habitat types at each site, and their condition. This was conducted by Ecosulis, in the form of a Preliminary Ecological Appraisal (PEA) comprising of the following:

- Desk-based review of existing ecological information provided by LBH and local record centre data, alongside open-source datasets, to identify any legally protected or notable species, and/or habitats that may be present; and
- A field survey to determine current habitat types present on the Site, using the latest UK Habitat Classification (UKHab) methodology and incorporating an assessment of habitat condition; and
- Preparation of a concise report summarising the findings of the desk study and field survey, and details of conclusion and recommendations.

The purpose of the PEA is to identify early opportunities for enhancement to improve biodiversity value at each site, and, where possible, highlight protected and notable species or habitats which may benefit from or be negatively impacted by habitat interventions at the Site. We anticipate all PEAs on Council land will be available to view via the Council's website by early summer 2026.





Community Involvement

Parks and open spaces foster community cohesion by serving as venues for events, volunteering, and shared activities. Involving residents in the management and decision-making processes of parks ensures that these spaces reflect community needs and values, encourages a sense of ownership, and strengthens stewardship. Active participation not only improves the sustainability and relevance of green spaces but also builds stronger, more engaged communities.

Friends Groups

The Council works closely with the Friends of Lampton Park and encourages them in their efforts to apply for grants and to organise volunteer days and events. We also engage with other community groups and third parties to encourage and ensure opportunities for the needs and requirements of a diverse borough population.

The Parks Team provide support for applications to the Council's Thriving Communities Fund. More information about the scheme can be found on the Council webpages [here](#).

The Hounslow Friends of Parks Forum holds quarterly meetings and act as a support network that provides networking opportunities for local groups. The forums are facilitated by [Habitats & Heritage](#) who are a west London based organisation who help support new and established Friends Groups.

The Parks team engage with people from a wide range of backgrounds to increase representation and improve access to our green spaces, while also supporting placemaking and a stronger sense of belonging through engagement. This has included working with groups such as the Care Leavers team, the Youth Council, refugees and asylum seekers, Duke of Edinburgh students, faith groups, attending careers fairs at West Thames College, and collaborating with EDI networks and local educational institutions.

Friends of Lampton Park

Formed in 2024, the Friends of Lampton Park aim to strengthen the connection between nature and the community by fostering a sense of belonging, ownership, and shared stewardship of the green space. They play an active role in the Lampton Park Community Garden, which now operates through community-led sessions that promote knowledge sharing, reduce social isolation, and support integration among diverse groups.



Since their formation, the Friends have launched initiatives such as the 'Mindful Lampton' Nature Wellbeing Walk—delivered in early 2025 in partnership with the Parks Team and Habitats & Heritage—and are planning further community activities including litter picks, night walks, and a COVID memorial commemoration with wildflower seed sowing in spring. While they are not yet formally constituted, the group is prioritising community cohesion, park awareness, and growing their membership.

In early 2026, the Friends also collaborated with Habitats & Heritage and the Parks Team to restore the Irie Pond through a community Pond Maintenance session involving vegetation clearance, litter removal, and pond dipping.





As part of the community garden initiative, the Friends of Lampton Park have produced 13.47kg of food—equivalent to 168 portions—with a collective value of £144.22. They continue to support a diverse group of participants, including Duke of Edinburgh students, refugees and asylum seekers, ESOL learners, SEN students, senior citizens, overseas visitors, care leavers, and contractors from Emersons & JW Gray through the Hill Group’s Social Value programme. They have also helped create a safe, welcoming space for women to learn new green skills and build confidence in outdoor environments.

The Friends are active members of the Women Core Community Working Group, contributing to efforts to address Violence Against Women and Girls (VAWG) within the park, particularly around target hardening and improving the sense of safety.

Aspirations

The Friends of Lampton Park have identified several aspirations to enhance the park’s community, ecological and cultural value, including:

- Developing sensory gardens and creating innovative natural-material artworks, alongside celebrating the park’s history through displays such as refreshed signage and the re-inscription of the Sarsen Stone.
- Increasing planting of flowers and trees to support wildlife and strengthen the park’s natural habitat.
- Creating a wetland area within the woodland to improve drainage and reduce seasonal boggy conditions.



- Restoring the pond so it can be used as an educational space for schools, colleges, and universities.
- Continuing to grow the Community Garden as a hub for learning, enabling residents to learn how to grow food affordably.
- Introducing imaginative nature-based art installations inspired by fictional characters such as *Fantastic Mr Fox* and *Charlotte's Web*, including natural "mushroom houses" and playful woodland features.
- Hosting music sessions with the Hounslow Music Service to create hyperlocal, low-carbon cultural events for the community.

Volunteering

The Council and GS work with the public to inform, educate, and volunteer in managing habitats through event opportunities and specific projects such as school planting in green spaces, green gyms, tree planting, and habitat surveying. Community involvement and engagement in nature conservation projects helps to increase the health and wellbeing of our residents.

The GS Countryside team have been undertaking a new 2-year initiative since spring 2024 called Volunteering in Parks (VIP), where they have expanded their volunteering sessions across 6 Hounslow's parks and open spaces which includes Lampton Park. The team organise, run, and promote opportunities, giving stakeholders the chance to volunteer in a local green space. More information can be found on the Parks Hub webpages [here](#).

General Activities include, but not limited to;

- Litter picking
- Meadow creation and management
- Tree planting, maintenance, and aftercare
- Bulb planting
- Wildlife Surveying
- River clean ups (where relevant)
- Creating and restoring habitats

In September 2024, the Council awarded London National Park City funds from its Thriving Communities Fund to establish a 'ranger' network in the borough. These rangers have the ability to apply for the small grants programme, allowing them up to £1000 of immediate funding to run localised projects. They also join a network of other rangers in educating, supporting, and influencing nature-positive behaviour especially in young residents. Examples of these projects include [Heron Way wildflower planting](#), [Heston Pocket Gardens](#), [Poetry in the Park](#) and [Accessibility to Nature](#), all of which can be found on the LNPC [website](#).



Marketing

Promotion and marketing of Lampton Park is carried out by a range of measures to ensure that local people and visitors to the borough are aware of the facility.

Entrance Signage

The design principles of our recent signage refresh encourage greater user engagement in exercise and outdoor activity by using pictograms and maps to illustrate the facilities available in the park and the surrounding area. It promotes the unique character of each park and its association with the community and presents a consistent London Borough of Hounslow parks identity.



There are 4 entrance signs in Lampton Park.

Onsite Promotion

To promote events and activities in our parks, weatherproof posters and banners are used to display up and coming events and activities across the site and promotional materials are shared with local community groups. Noticeboards are also used by the Council and local communities to share upcoming events and activities as they are accessible for all.

Web & Press

The Council's website has a dedicated Parks and Open Spaces section which can be found [here](#). You can find general information about the service, with useful links, advice, and reporting channels for customers to use.

Parks Hub

The Consultation and Engagement platform Let's Talk Hounslow has a new dedicated Parks Hub which includes current consultations, surveys, and live projects, as well as a digital noticeboard. Since the launch in February 2024, the site has had over 27,800 visitors to the homepage. To view the hub visit [here](#).



Let's Talk: Parks and Open Spaces

Hounslow Council is bringing nature and green spaces closer to you. As one of London's greenest boroughs, Hounslow's parks are essential for wellbeing and conservation. This hub allows residents to share feedback on consultations, improvements, and projects about our parks and open spaces.

Our Parks team, alongside Lampton Services Greenspace, manage over 100 open spaces, including 79 allotment sites, 9 cemeteries, and 4 churchyards. Working with Friends Of groups and charities, we ensure our parks remain vibrant spaces for relaxation, play, and community activities. Click below to learn more.

[Learn more](#)

Hounslow also has several other websites which are designed to engage with the wider community about our services and the opportunities available in Hounslow.

- Find out what's on [InHounslow](#)
- [Hounslow Nature Network](#) is a new resource bank to connect you with local environmental organisations across London
- A dedicated [Nature and Greenspaces](#) section on Hounslow Connect, the go to platform for local activities, advice, guidance, and support in Hounslow
- Promotion through Go Parks London- <https://www.goparks.london/boroughs/hounslow>
- London National Park City Mini-Guide for Hounslow, celebrating Hounslow's great outdoors [Hounslow's Mini Guide](#)



The Council also has an active social media presence on [Facebook](#) and [X](#) with the handle @LBofHounslow.

To create community awareness for all its facilities the Council regularly produces articles and press releases about activities and facility development. The Council publishes a regular newsletter, Hounslow Matters, which is provided to all residents and includes news and information about our services, including parks and open spaces. To download the latest publication please follow the link [here](#).

Lampton Greenspace is a part of the Lampton Services Group who have their own social media platforms.

- <https://www.lamptonservices.co.uk>
- X- @TheLamptonGroup
- Facebook- [lamptonservices](#)
- Linked In- [Lampton Services](#)
- Instagram- [@lamptongroup](#)

Events

The Council encourages the hire of parks to appropriate organisations for commercial and community events. Events are held in accordance with the Parks and Open Spaces Events Policy found on the council webpages [here](#).



The Events team are currently planning events and activities for the upcoming year. Events Calendar is available to view on the LBH website- [What's On | InHounslow](#)

Funfair - Regular funfairs throughout the year

Lampton Park Community Garden sessions with Friends of Lampton Park (tbc):

Friends of Lampton Park events:

- Mindful Lampton Series
- Bat Walks
- Bird Walks
- Forest Bathing
- Women’s night walk – Reclaim the Night

Lampton Pond Maintenance - Session with Parks, Friends of Lampton Park and Habitats and Heritage took place Saturday 17th January 2026. At least 50% of the pond vegetation was cleared, litter was removed and local wildlife discovered.

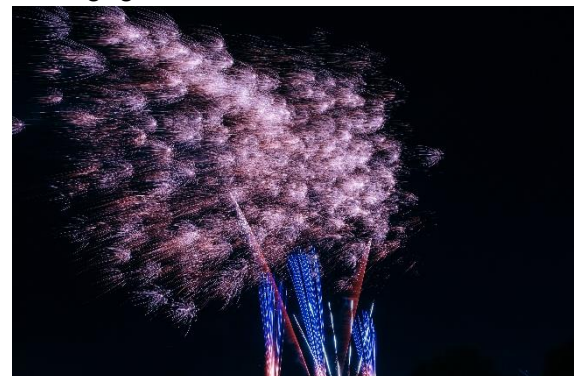


2025

Hounslow Lights -Lampton Park – 25th October 2025

Our annual seasonal event returned to Lampton Park with a bang! Partners for the event, Beach’s funfair brought a ‘mega-funfair’ with just the right balance of exhilarating rides and immersive experiences for thrill-seekers as well as more gentle amusements for younger residents. Activities celebrating Halloween, Diwali and Bonfire Night were returning favourites, with all arts and crafts being in high demand all evening! Residents were also able to engage with various council teams.

The fireworks were a great success with a dazzling display set to another themed playlist celebrating the season – was wonderful to see so many of our residents singing and dancing along to the music this year! Thank you to everyone who attended.





Mindful Lampton Series

Mindful Lampton sessions are mindful walks around Lampton Park led by Friends of Lampton Park and Habitats and Heritage. These sessions serve as opportunity for individuals to connect with nature, be mindful in their local green space and appreciate the wildlife, as well as boost their mental wellbeing. The first session of Mindful Lampton (Saturday 11th January 2025) which consisted of a sensory walk around the park which included the orchard, the woodland and open site. The session finished with tea, coffee, and biscuits at the community garden.



The second set of Mindful Lampton sessions were part of the Mindful Lampton Forget Me Not – which was a set of ground preparation sessions for wildflower sowing around the pond and included a seed sowing day to commemorate victims of COVID – 19. The sessions were led by Friends of Lampton Park, Lampton Greenspace’s Countryside team and Habitats and Heritage and formed part of the VIP sessions. The COVID memorial seed sowing event consisted of seed sowing and meeting at the COVID memorial garden to reflect in the commemorative space, with tea, coffee, and biscuits.





Lampton Park Community Garden sessions which occurs at least twice a month from January to December at the Community Garden, which also serves as a knowledge sharing hub. Beginners to experts have attended sessions to develop the space into an edible, nature recovery, and biodiverse garden. Harvests are shared with volunteers and provide a space for the community to come together. Led by the Friends of Lampton Park and the Parks team, the garden is a continuous feature supporting individuals who are socially isolated, with mental health needs, SEND, refugees and asylum seekers, care leavers, DofE students and many more.



2024

'Lampton Lights'- Saturday 26th October welcomed an evening full of fireworks and seasonal fun! Celebrating Diwali, Halloween, and Bonfire Night all in one. With some creepy stories, mandala painting, fun fair, council services and other exciting activities, there was something for everyone.





'Greener Living Festival'- 7th September an array of immersive activities was set up to promote sustainable green activities for all ages. From upcycling to ways of recycling more efficiently, biodiversity to sustainability awareness.



A bug hotel was also created with local residents and the Countryside team, 'Bugingham Hotel'.



The Hounslow Mayor was also in attendance and got involved in creating her very own paper plant pot.

Eid Prayers - are arranged twice a year by a local Islamic Trust. The day consists of Eid Prayers followed by food and a large funfair. Families enjoy the park all day and the event now attract audiences from Ealing as well as Hounslow, bringing thousands of visitors to the park.

Polish Heritage Day - In the last 3 years we have held the Polish Heritage Day event in Lampton that was free, open to the public and is an aim to raise an awareness of traditional Polish culture as well as trying to help local Polish residents link with different services available in the borough. The organiser arranges for traditional Polish food stalls, traditional stage performances, a small funfair, and a variety of other activities for people to take part in. Great success and is set to continue annually.

Barrio Fiesta – An event celebrating Filipino culture and community through music, dance, food stalls and connecting Filipino people across the country. This event is attended by 10,000 people over the course of two days, with attendees visiting from all over the country.





2022

‘Films on the Green’- As part of the Summer of Culture programme of events we had through the summer '22, our parks were used as a free open cinema for the locals to enjoy. Tickets were free but had to be reserved through a booking system to ensure no overpopulation. Families and individuals were thrilled, some cosplayed as their favourite characters, some brought their own picnics. It was a fantastic experience, and we hope to continue this idea moving forward across more of our parks.



‘Lampton Lights’ – First of a roaming event planned in the borough, the first fireworks display the Council had put on in the last 15 years. This event was a celebration that combined Halloween, Bonfire night and Diwali all in one. Great success with over 1200 residents turning up to celebrate and take part in both the free and paid activities. We had a mixture of council stallholders, NHS as well as third party partners which included the funfair, food vendors etc., free activities: arts and crafts such as pumpkin carving and mandala painting, and paid activities such as face painting and henna.





How do we know we have arrived?

Monitoring & Review

This management plan has been designed as a live document that will guide development in the park over the next five years. Progress will be subject to monitoring and review to measure success and delivery of aims.

LBH Parks Officers work closely with GS and the Friends group to monitor progress and discuss future plans. This includes:

- Performance against the requirements of the Management Plan
- Provision and analysis of infrastructure surveys
- Provision and analysis of asset surveys
- Monthly project meetings
- Quarterly Friends Forum
- KPI's and performance monitoring (see Appendix 4)

An annual SWOT analysis will be carried out by all stakeholders and, together with the information gathered from all the monitoring methods will be recorded and fed into annually updated management plans.

GFA Judges feedback and award outcome will enable continuous learning, development and improvement by all partners involved in the award process. Discussed at monthly Parks and GS management meetings and meetings with stakeholder.

Action Planning

Our action plan for Lampton Park is provided in Appendix 1. This plan is based on an evaluation of the SWOT analysis together with other projects and plans raised by the Friends group. The action plan lists actions and categorises based on timescales and the Green Flag award criteria. The plan will also allocate ownership for each task to the key stakeholders.



Appendix 1

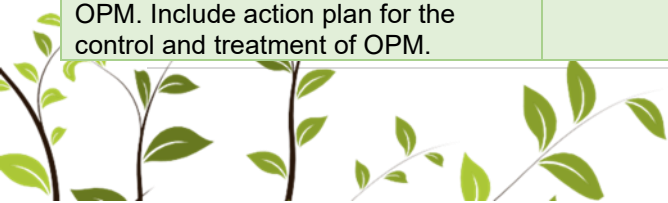


Lampton Park | Green Flag Award | Action Plan Updated 2026

Key to Action Plan

Green Flag Award Criteria		Stakeholders		Delivery Timescales	
W	Welcoming Place	LBH	Parks Service Management Team	S	Short term (less than 1 year)
H	Healthy, Safe and Secure	GS	Lampton Greenspace	M	Medium term (1 to 3 years)
VM	Well Maintained and Clean	FoLP	Friends of Lampton Park	L	Long term (3+ years)
S	Sustainability	HH	Habitats & Heritage	O	Ongoing
BH	Biodiversity and Heritage				
C	Community				
Mkt	Marketing				
Mgt	Management				

MANAGEMENT ACTION	STAKE-HOLDER	GREEN FLAG CRITERIA	TIME-SCALE	STATUS 2026
Improvements to entrance design and surfaces	LBH	W, WM	L S/M	Part of Make your Mark project. New signage has been installed
Ongoing maintenance of the fully restored pond	LBH, FoLP, HH	W, H, WH	O	Via Friends of Lampton Park and Habitats and Heritage
Improved planting schemes around the pond and existing borders within the park	LBH, GS	W, WM	O	Part of Make your Mark project and Volunteering in Parks programme
Review signage design and replacement program in line with new parks signage strategy to promote activity.	LBH	W, S	S/M	Signage completed in 2023
Anti-Social Behaviour – signage review, continue stakeholder engagement and targeted enforcement.	LBH, GS	W, H	O	liaise regularly with police on ASB. Development of project 'Make your Mark' looking at improving Lampton Park regarding Women and Girl's safety issues.
Review Dog Fouling signage	LBH, GS	H, WM	O	Signage completed in 2023
Reuse Green Waste	GS	H, S	S	Any woodchip generated on site is used on site
Continue to maintain a healthy tree stock with a review of opportunities for new tree planting.	LBH, GS	S, W, WM, BH	M	All tree works are carried out by GS in compliance with UK legislation. Additional tree planting has been done as part of the 22/23 programme.
Oak Procession Moth (OPM) – Continue inspection program for OPM. Include action plan for the control and treatment of OPM.	GS	WM	O	This site has significant issues with OPM which is on a treatment plan.



MANAGEMENT ACTION	STAKE-HOLDER	GREEN FLAG CRITERIA	TIME-SCALE	STATUS 2026
Expand orchard area	LBH, GS	BH, C	S/M	Completed, with further options to expand in future. Looking to expose and remove old pitch and putt course across area. Infill with topsoil, level, and seed with grass. Remove all of the old crazy gold course and infill with topsoil and seed with grass.
Develop plans for increasing habitats and the biodiversity of the site. Explore opportunities for enhanced hedge and meadow planting around the site to increase amenity value, biodiversity and reduce maintenance.	LBH, GS	BH	S	Any new planting will aim to provide increased ecological benefits and keep maintenance to a minimum
Renovate the rockery area with sensitive planting	LBH, GS	W, BH	S/M	Planting in this area to be reviewed. Budget opportunities are being sought for larger replanting options.
Add bird boxes & bat boxes, Bat Surveying, and other site appropriate habitats/surveys	LBH, GS	BH	M	Three bird boxes were installed in 2020, and further opportunities will be explored in the future as they arise. Further bird and boxes to be installed early 2026
Memorial Garden - Carry out a full renovation and replanting of this feature	GS	BH, WM	S/M	This area has already had a partial restoration. Further trees have been added to this area this planting season. Exploring seating in Make your Mark project. Looking to rectify boundary by removing chain link and opening up space.
Creation of a community sensory garden by the memorial garden	LBH	C	S/M	Community Garden developed near tennis courts in 2024. Ongoing, Plants to plant shrubs around statue in memorial garden,
Continue to work to establish a Friends of Lampton park group and with the wider community.	LBH	C	O	Friends of Lampton Park group established, actively involved in Community Garden, Volunteering in Parks and planning engagement activities.
Continue to provide support to other community volunteers and services to promote greening activities.	LBH	C	O	
LBH to continue to facilitate events within Hounslow's parks and open spaces as part of an active community engagement agenda.	LBH	C	O	Events have restarted throughout 2022 and continue to be supported by our events team.
Support Fitness activities in the park	LBH, GS		O	Positive use of the park for fitness activities with minimal impact on the green assets. Development of new active space as part of Make your Mark.

MANAGEMENT ACTION	STAKE-HOLDER	GREEN FLAG CRITERIA	TIME-SCALE	STATUS 2026
Installation of a new Multi Use Games area	LBH	C	S/M	Funding now secured. Works due to take place to remove mini golf area as part of Make your Mark.
LBH to facilitate opportunities for Education, Culture and Heritage at the site	LBH, GS	C	S, M	Opportunities will be explored as they arise.
Restoration of the Sarsen stone heritage plaque	LBH	BH	M	Part of Make your Mark
Carry out an asset survey for the park buildings to explore options for repurposing	LBH	BH, Mkt	M	Feasibility study received for old toilet block,
Continue to publicise the park through LBH website, social media platforms, and noticeboard. Also, borough wide campaigns, including achievements, initiatives, and announcements.	LBH	Mkt	O	Ongoing.
Support other positive promotion of the park through various media platforms.	LBH, GS	Mkt	O	Ongoing.
The management plan needs to be reviewed annually and the action plan to be updated annually.	LBH, GS	Mgt	O	Ongoing.
Development of a community garden which reflects the ethnicities surrounding the park	LBH, FoLP	BH, C, W	L	Ongoing
Improvements to Lampton Park – ‘Make your mark’ project, exploring ways to increase safety in parks for women and girls.	LBH	C, H	L	CIL bid awarded funding, awaiting for funding to be released. In design stage, engagements were completed initially.
Lampton Seed Bank development	LBH	C, H, BH	L	In design stage and being explored in Lampton Park Community Garden.
Pathway around the open field and through the woodland	LBH	C, H, W	L	Being explored post Make your Mark project.



Appendix 2

Ecological Survey 2023

The park comprised of mowed amenity grassland, wildflower meadows, shrubs, a memorial garden, and tree lines along the boundaries. Native trees both semi-mature and mature were recorded at the site include deodar, pines, field maple, sycamore, ash, and silver birch. Shrubs at the park are known to attract birds like blue tit, house martin, pigeon, ring necked parakeet, and kingfisher.

Amenity grassland is regularly mowed and wildflower meadows at the site records the presence of false oat grass, common knapweed, creeping thistle, and daisy.

For the enjoyment in the park, it has playing field, walking trails and line of trees to do bird watching. A small pond was seen at the site, and it is not currently managed properly.



Considerations

- Provision of native fruiting and flowering plants
- Installation of a series of bat boxes -to provide roosting locations for bats and bird boxes -for nesting, foraging, and commuting, throughout the site. The site is assessed as providing high value for foraging and commuting and roosting bats, based on the linear features on the site. Also, mature trees have gaps and crevices which provide potential habitats for roosting bats.
- Installation of hedgehog houses
- Installation of log piles, bug hotels and artificial hibernacula for amphibians, invertebrates, and reptiles.





Appendix 3

Annual Maintenance Work Schedules

The following table provides an overview of the annual maintenance work schedules. All frequencies are subject to seasonal variations, resource, and specific horticultural requirements. They are reviewed annually by the Operations Manager at GS to ensure they remain suitable and reflect any significant site changes. See “Meeting the Green Flag Criteria” section for more detailed management information.

Service	Frequency/Management information
GM Summer works (March - October) <i>Amenity grassland cutting</i> <i>Rough grassland cutting</i> <i>Wildflower meadow cutting</i> <i>Hedge & shrub cutting</i>	Managed by the Grounds Maintenance Teams Once every 3 weeks 1-2 cuts per summer season 1-2 cuts per summer season 1 “reduce cut” dependent on horticultural requirements
GM Winter works (October – March) <i>Hedge & shrub cutting</i> <i>Pond clearance</i> <i>Leaf clearance</i>	Managed by the Grounds Maintenance Teams 1 “hard cut” dependent on horticultural requirements As required, dependent upon size and conditions As required, from hard surfaces and grass areas
Cleansing <i>Litter collection & bin emptying</i> <i>Non-offensive graffiti removal</i> <i>Offensive graffiti removal</i> <i>Fly tip removal.</i>	Managed by the Cleansing Teams [site specific] Daily, including bank holidays. Within 7 days of notification Within 24 hours of notification Within 48 hours of notification
Playgrounds <i>Safety inspections</i>	Managed by the Playground Inspectors One visual inspection per week minimum (based upon site usage), quarterly “operational” inspections, recorded, annual independent inspections by the Royal Soc. for the Protection of Accidents (ROSPA), recorded.
Infrastructure <i>Cleansing (bins, benches, signs etc).</i> <i>Lighting</i> <i>Buildings</i>	Various teams/management As required, based on visual inspections and reports Inspections and repairs managed by Hounslow Highways All H&S checks conducted, electrical, fire, water, etc.
Trees <i>Tree inspections</i> <i>Tree maintenance</i> <i>Tree watering</i> <i>Tree planting</i>	Managed by the Tree Team Annually Based on previous inspections, prioritised by H&S Summer: May – September (for trees under 3 years) Winter: October – March





Monitoring the Annual Maintenance Work Schedules

Members of the Parks Team conduct site visits to ensure that the work schedules are being adhered to and report issues to GS to resolve where necessary. Customer enquiries relating to maintenance issues are also routinely assessed to ensure they are rectified in a suitable and timely manner.

The Parks team also make use of and refer closely to the guidance provided by Parks for London in their recently updated Green Space Quality Manual. This provides valuable insight and understanding as to “what good looks like” and will help to ensure a consistent approach is taken during routine monitoring.

For more information regarding the tools and approach that will be used for monitoring, please visit the [Parks for London](#) website and download the Parks for London [Green Space Quality Manual](#).





Appendix 4

Contract Performance & Key Performance Indicators

The London Borough of Hounslow’s Parks team works in close partnership with GS—to deliver and monitor the full range of parks and open-space services across the borough. Lampton Greenspace provides the operational delivery for grounds maintenance, arboriculture, playground inspections, litter control, horticulture, cemetery and allotment management, and countryside services, all in line with the council’s service specification.

Performance of the Parks service is jointly managed through an agreed suite of Key Performance Indicators (KPIs), which are monitored monthly (with some measures being seasonal). These KPIs ensure accountability, drive service quality, and support continuous improvement. They cover outputs such as grounds maintenance standards, tree inspection and management, play area safety inspections, horticultural quality, response times for customer enquiries, and the overall condition and cleanliness of parks and open spaces.

Through this structured performance framework and collaborative approach, the Parks team, and Lampton Greenspace work together to maintain high standards, deliver community value, and support Hounslow’s wider environmental and “Greener Borough” objectives.

Please find a link to a recent cabinet performance report, which includes summary performance data for the Parks service [here](#) and examples below.

Sub Department		KPI	Performance Indicator	Agreed Targets (Annual)	Agreed Targets (Month)	Month Actual	Reported SR Month	RAG Status
AIPP	1.1	Number of Residents on allotment waiting list	700	700	2166	N/A	Pass	
AIPP	1.2	% - Allotment Occupancy	90%	90%	94.85%	N/A	Pass	
AIPP	1.3	% Visual Playground Visual inspections to be completed weekly	100%	100%	100%	N/A	Pass	
AIPP	1.4	Production of operational playground report by a qualified engineer with images	100%	N/A	100%	N/A	Pass	
Arboriculture	2.1	% of planned tree inspections to be carried out Quarterley	90%	90%	100%	N/A	Pass	
Arboriculture	2.2	Trees to be inspected within 7 days of notification	90%	90%	100%	0	Pass	
Arboriculture	2.3	Planned tree works to be completed each quarter	90%	90%	100%	N/A	Pass	
Arboriculture	2.4	Tree Emergencies to be responded to within 3 hours of notification	100%	100%	100%	1	Pass	
Cemeteries	3.1	% Burial service to be implemented within 7 days of request	100%	100%	100%	N/A	Pass	
Cemeteries	3.2	24hr Burial service provided and implemented for religious denominations	100%	100%	100%	N/A	Pass	
Cemeteries	3.3	Completed Grounds Maintenance programme	100%	100%	100%	N/A	Pass	
Cemeteries	3.4	% Maintenance programme completed for chapels, including cleansing before use	100%	100%	100%	N/A	Pass	
Countryside	4.1	Volunteer hours from Community and corporate activities	10,000	833.3	896	N/A	Pass	
Countryside	4.2	Education Numbers - Total number of children and adults participating in environmental education	4,500	375	767	N/A	Pass	
Grounds Maintenance	5.1	% Fly tips to be removed within 48hrs of notification	90%	90%	98.95%	95	Pass	
Grounds Maintenance	5.2	% Abandoned Vehicles to be removed within 7 days of notification	95%	95%	100%	0	Pass	
Grounds Maintenance	5.3	Overflowing litterbins and excess litter to be responded to within 48hrs of notification	95%	95%	100%	0	Pass	
Grounds Maintenance	5.4	% Graffiti to be removed within 7 days of notification	95%	95%	100%	0	Pass	
Grounds Maintenance	5.5	% Offensive graffiti to be obscured within 24hrs and removed within 7 days of notification	100%	100%	100%	0	Pass	
Grounds Maintenance	5.6	Total Number of graffiti incidents reported	N/A	N/A	0	0	Pass	
Grounds Maintenance	5.7	Defective/Dangerous materials or items to be responded to, repaired or isolated within 4 hours	100%	100%	100%	1	Pass	
Grounds Maintenance	5.8	% Planned works completed for grass mowing	100%	100%	N/A	N/A	Pass	
HSEQ	6.1	% Service Contracts Implemented as part of FM management	100%	100%	100%	N/A	Pass	
HSEQ	6.2	Number of RIDDOR reportable incidents	N/A	N/A	0	N/A	Pass	
HSEQ	6.3	Number of H&S Incidents reported (Non-Riddor)	N/A	N/A	3	N/A	Pass	

Example of monthly KPI report provided by GS





Parks Summary - October 2025

PGID0001 - Volunteer Hours
- 1699

Decrease of 496 hours from previous month. Likely as a result of decrease hours of daylight as winter progresses as well as weather and less events taking place in parks



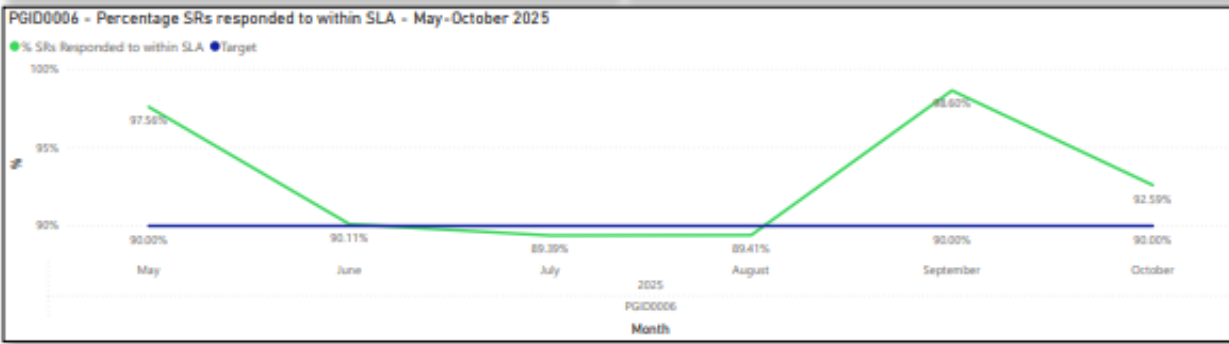
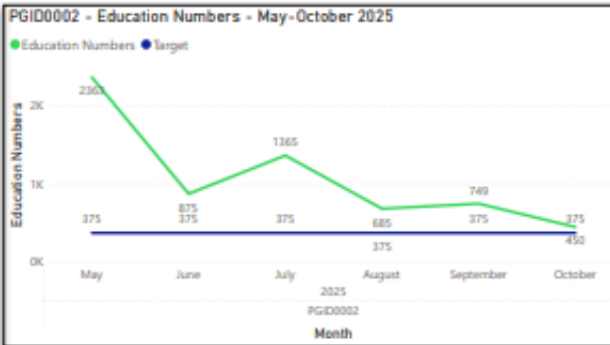
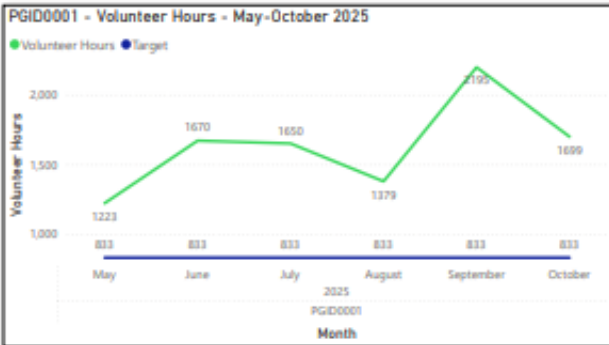
PGID0002 - Education Numbers
- 450

Decrease of 299 people receiving environmental education. This is likely to due changes in weather & hours of daylight. As well as October half term holiday, where less school groups are receiving education.



PGID0006 - Percentage SRs responded to within SLA
- 92.59%

As we collect more data on this KPI, performance continues to improve. A 2% increase from last month, despite an increase of 32 SRs.



Example of Monthly Performance Cabinet Report - Parks





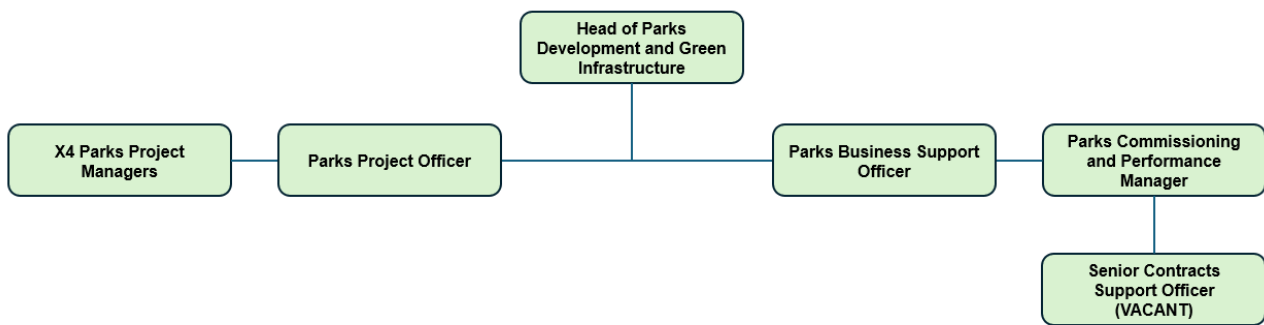
Appendix 5

Management Structure & Responsibilities

Lampton Park is owned and managed by the LBH and maintained by GS. Information below sets out the management structure and describes the roles and responsibilities of the key personnel involved in managing and maintaining the site.

LBH Parks Service Management Structure

The Environment and Culture Directorate provide the following roles who are responsible for the management, and associated roles, of Hounslow’s parks and open spaces:



LBH Head of Parks Development & Green Infrastructure

Senior commissioning role for the management and partnership with GS, senior advisor in relation to parks and open spaces, strategy and policy development, Member’s liaison.

LBH Parks Project Managers (x4)

Project development and management, fundraising, community engagement and consultation, implementation, strategy, and policy setting.

Parks Project Officer

Development and delivery of projects, fundraising, community engagement and support Head of Parks.

Commissioning & Performance Manager

Supplier performance governance and relationship management, Legal and contracts, Planning/Commissioning, Operational Service delivery and business processes/systems.

Senior Contracts Support Officer

Supplier performance, customer service and casework, community engagement and consultation, project support.

Parks Business Support Officer

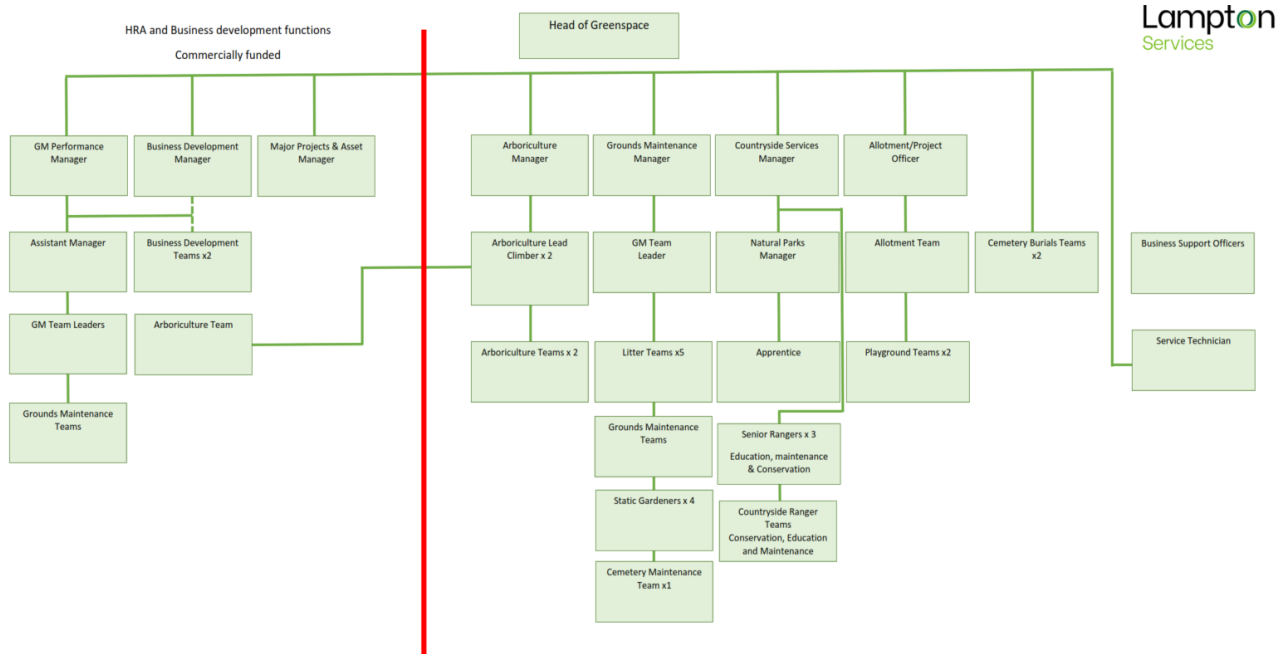
Assistance with finance; administration, project support, lead on Parks communications and web design management.





Lampton Services Greenspace Management Structure

The following GS roles are responsible for the management of Hounslow's parks and open spaces.



Head of Service

Responsible for the ground's maintenance service provision. Oversees the delivery of the specification which includes infrastructure.

Projects Manager including the Allotment Service

Responsible for the development of park infrastructure, management of the allotment service, overseeing horticultural standards, schemes, and developments. Main contact for contractors (CDM). Friends and Member liaison.

Countryside Manager

Responsible for the management of the borough's countryside service. This role includes the management of the Ranger team and educational, animal husbandry, environmental and wildlife operations/programs associated with these locations.

Planned Maintenance Manager

Responsible for the management of the operational resources to deliver the ground maintenance services for the parks and open spaces sites.

Performance and Support Officer

Customer Service functions- Freedom of Information (FOI), customer enquiries, councillors' enquiries, and monthly statistics; technical project support.

Tree Team Manager

Responsible for the teams that carry out the inspections and maintenance of the boroughs 85,000 park trees. Oversees all tree planting schemes for the council and community groups in parks. Managing and mapping/recording of invasive species. Planning application guidance to LBH.





Playground Inspectors x2

Visual, operational, and minor repairs of playgrounds. Inspected annually external contractor.

Operational Teams

Ground maintenance is delivered using mobile teams. These teams provide the Grass cutting, horticultural tasks, general maintenance, litter bin emptying, and litter picking.

Business Support Officer

Provides administration for fleet, handles finances and overtime schedules.



London Borough of Hounslow
Hounslow House, 7 Bath Road
Hounslow TW3 3EB

www.hounslow.gov.uk

Tel: 0208 583 5555



London Borough
of Hounslow



Lampton
Services
Greenspace