

GREEN FLAG MANAGEMENT PLAN 2026

Hounslow Heath



London Borough
of Hounslow

Lampton
Services
Greenpace



Foreword

The London Borough of Hounslow has some superb greenspaces that everyone can be proud of. They are places where people can relax, enjoy nature, play, or take part in cultural and historic activities and recreation. They are essential for the health and well-being of our residents, and they are vibrant spaces that provide a borough-wide green infrastructure for our communities.

In Hounslow, we are committed to stimulating a strong and robust green recovery related to our Greener Borough Framework and Climate Emergency. The Council's Green and Blue Infrastructure Strategy plays a major role in delivering the Greener Borough Framework and sets out key priorities for our greenspaces in areas such as health and wellbeing, regeneration, climate change and nature recovery.

The London Borough of Hounslow considers the Green Flag Award process as a tool towards positively developing our greenspaces within this strategic framework and in partnership with our communities. It contributes to providing a vision, with clear objectives and priorities for how the Council and its partners would like to see greenspaces managed in future years.

This plan is not only the commitment from the Council to improve our greenspaces but is an important recognition of the support and commitment of the friends of parks, community groups, local clubs, third sector and partners who share our visions and work with us to respond to our green agenda.

Acknowledgements

This plan has been produced by the London Borough of Hounslow (LBH) Parks Team and Greenspace* (GS). In addition, it is important to acknowledge the great contribution from Hounslow Heath Conservation Volunteers and Hounslow Heath Countryside Volunteer Rangers their commitment and dedication in supporting the development, promotion, and management of Hounslow Heath.

*Lampton Services Greenspace (GS) is part of the Lampton Limited Group and is a company wholly owned by London Borough of Hounslow with an aim of returning value to the Council representing a bold new ambitious approach.





Contents

Foreword	1
Acknowledgements	1
Purpose of the Plan	3
Where are we now?	5
Site Description & Facilities	5
Detailed History	7
Biological Communities.....	8
Biological Value	10
Cultural & Historical	11
Recreational Value	12
Recent Achievements	13
Where do we want to get to?	22
SWOT Analysis.....	23
How do we get there?	24
Meeting the Green Flag Award Criteria.....	25
A Welcoming Place.....	26
Healthy, Safe & Secure.....	26
Environmental Sustainability	32
Biodiversity & Heritage.....	34
Community Involvement	37
Marketing	38
How do we know we have arrived?	42
Appendix 1 – Action Plan.....	43
Appendix 2 – Annual Maintenance Work Schedule	47
Appendix 3 – Habitat Management	49
Appendix 4 – Biological Information	51
Appendix 5 – Contract Performance & Key Indicators	53
Appendix 6 – Management Structure & Responsibilities	55



Purpose of the Plan



The Management Plan for Hounslow Heath has been prepared by LBH and Lampton Services Greenspace. The plan is specifically developed for the individual site with a dedicated Green Flag Action Plan.

This plan has been developed following detailed assessment of the Green Flag Award criteria and a comprehensive collaborative review of the existing uses, management, and maintenance of Hounslow Heath.

As part of the development of the plan, detailed consultation has taken place with the Greenspace parks maintenance and management team and LBH officers.

The Management plan is a 'working document' that brings together all the information relating to Hounslow Heath and will be updated, revised, and annually reviewed. This plan has been developed based on the Commission for Architecture and the Built Environment (CABE) Space document "*A Guide to Producing Park and Greenspace Management Plans*" and the "*Green Flag Award Guidance Manual*" guidelines.

Policy & Strategic Context

Actions and aims within this management plan are both guided by, and relate back, to wider Council strategies. The development of parks and open spaces are a vital component of the Council's Corporate Plan 2022 – 2026. Our work during this period is focused on six priority ambitions for a borough that is greener, healthier, cleaner, thriving, safer, and liveable. Green infrastructure contributes in many ways to helping us achieve these priorities.

A key approach of Hounslow Council is working under the concept of "One Hounslow" where services are delivered without silos, working for specific outcomes with several internal council departments, community groups, NGOs, and government bodies. Whilst also attracting external investment and developing new partnerships through the Regeneration Service's Business Case for Growth.

Parks and open spaces play an important role in the approach highlighted in the Council's Joint Health and Wellbeing Strategy with start, live and age well, preventing ill-health, which in turn has an impact on reducing costs within the wider economy, the Council, and the NHS.

The Council's Equalities and Diversity Strategy 2023, created to improve equality, diversity, and inclusion - sets out an ambitious approach to target policies and funding to the areas which need them most to thrive. The strategy is based on three pillars - Equality by Place, Equality by Group, and Equality as Employer. Hounslow Council has committed to transform the opportunities and life-chances of communities in the borough's 30 most disadvantaged neighbourhoods.

The Council approved the Greener Borough Framework 2020-30 which seeks to provide a high-level framework to deliver on the Council's ambition and aspirations for the borough through enhancing our environment and reducing our use of resources. The framework is part of a wider ambitious green agenda bringing different people and organisations together to discover, engage, innovate, and deliver.



The adoption of the Green and Blue Infrastructure Strategy and Nature Recovery Plan are the pillar of the strategic framework for the development of our parks and open spaces and their management plans through the Green Flag Award process.

Useful Links:

- [Corporate Plan 2022-26](#)
- [Climate Emergency](#)
- [Green Infrastructure Strategy](#)
- [Greener Borough Framework](#)
- [Nature Recovery Action Plan](#)
- [Equalities, Diversity and Inclusion Strategy](#)
- [Hounslow Joint Health and Wellbeing Strategy 2023-2026](#)
- [Opportunity Hounslow: Our Business Case for Growth](#)

Parks Funding

The Council's Parks service is funded by a revenue budget for ground maintenance which are provided by our service providers, Lampton Services Greenspace, who maintain Hounslow's parks and open spaces, including allotments, cemeteries, trees, countryside and other workstreams.

In addition to this, the Parks and Open Spaces team sits within the Council's Environment Services directorate focusing on capital investment, contract and performance management, income generation and other initiatives. This is funded through core revenue funding and capitalisation.

Current capital funding has been allocated through a parks improvement programme, active since 2023. This funding covers project delivery and staff resourcing. Other capital funding is obtained via Community Infrastructure Levy (CIL); S106, the Council's Thriving Communities fund (local CIL), [Green Investment Fund](#), and other grants and initiatives. These are applied for annually or as necessary and are based on need and strategic investment required by both the Council and local communities.



Where are we now?

Site Description & Facilities

Hounslow Heath Local Nature Reserve is in the London Borough of Hounslow at Grid Reference TQ125747. The site is located between the communities of Hounslow and Feltham. The A312 Staines Road runs along the northern boundary of the site whilst the southern boundary is formed by the railway line from Waterloo to Staines. The site office and car park are situated in the northeast corner of the site where the A312 meets Frampton Road. The site is 81.95 hectares in total including an area of two hectares which is known as The Fair Field Site that is excluded from the Local Nature Reserve designation.



Site Information

Name: Hounslow Heath

Address: 450 Staines Road, TW4 5AB

Contacts: 020 8583 5555 Or Ranger phone: 07887410808 **Email:** countryside@hounslow.gov.uk

Web: www.hounslow.gov.uk

Designation: Local Nature Reserve, Site of Metropolitan Importance

Ownership: London Borough of Hounslow

Size: 82ha

Byelaws: Visit the [Park rules and byelaws | London Borough of Hounslow](#) page to download

Access: open access at all times

Transport: Train: Hounslow Station

Tube: Hounslow West

Buses: 116/117/235/237/110/111/R62

Parking: Hounslow Heath Car Park, Frampton Road

Local Facilities: Welfare facilities for staff and volunteers (currently no public access), car park, 5 ponds and wetland areas, Recreational grassland suitable for games, limited disabled and wheelchair access through the nature reserve, Dragonfly sculpture.



Hounslow Heath is a statutory Local Nature Reserve (under the National Parks and Access to the Countryside Act, 1949), declared in 1991. It is also classified as a Site of Metropolitan Importance for wildlife by the London Ecology Unit (Pape 1990) and retained as such under a review completed in 2008 by the Greater London Authority. This evaluation was adopted by London Borough of Hounslow within its Unitary Development Plan (LBH 1999) and protected under Policy “ENV-N.2.1 Strategic Nature Conservation Sites”.

A set of byelaws made under Sections 20, 21(4) and 106 of the National Parks and Access to the Countryside Act 1949 with respect to Local Nature Reserves have also applied since August 1991.

Access to Hounslow Heath is restricted to pedestrians, with formal entrances off Staines Road and Frampton Road to the north, Avondale Gardens to the east and Simpson Road in the London Borough of Richmond to the south. One formal access point exists from the old golf course site, now undergoing redevelopment, to the west of Hounslow Heath which is part of the London Loop Regional Walk. The only statutory Right of Way on site is the London Loop which runs through the south of the site from Simpson Road entrance to the western entrance on to the golf course.

There is an obligation of the London Borough of Hounslow to manage Hounslow Heath with due regard to the conservation of biodiversity which is covered under Section 40 the Natural Environment and Rural Communities Act 2006.

Hounslow Heath is currently under a Higher-Level Environmental Stewardship Agreement funded by Natural England. Management for certain habitat types such as heathland, grassland and scrub communities are undertaken following National England HLS prescriptive guidelines.

Hounslow Heath forms part of the Metropolitan Green Belt in Hounslow and therefore relevant planning and development restrictions apply.



Figure 1 Dragonfly sculpture near the main entrance at Hounslow Heath





Detailed History

Hounslow Heath is owned by the London Borough of Hounslow and is currently managed by Greenspace. The site was acquired by the local authority in 1986 following the abolition of the Greater London Council who owned Hounslow Heath from June 1979 when it was purchased for £110,000 from the Secretary of State for Defence.



Figure 2
Hounslow Heath
landscape

Hounslow Heath is a place of great historical importance with a recorded history dating back to Norman times. The history is recorded in two books by Maxwell (1935) and Bate (1948) that cover the period prior to the modern era. Some of the major land uses and historical events are as follows:

- 11th -16th century: Royal hunting grounds.
- 17th century to present: Military camps and training grounds.
- 17th – 18th century: Highwaymen, robbers; public hangings.
- 18th – 19th century: Agriculture and the parliamentary enclosures, development of cartography and the Ordnance Survey.
- 16th – 20th century: Gunpowder manufacture and early Industrialisation (e.g., milling sword, flax, snuff, flour, copper, oil, and calico mills).
- 1919 – 1923: First World War air defences and development of civil aviation.
- 19th century – 1973: Extraction of sand and gravels Waste and refuse disposal.
- 1985 – present day: Wildlife conservation, recreation, and education.

Many archaeological features within the reserve were destroyed during extraction for sand and gravels during the past 200 years. Those remaining include the butts of a former army shooting range that can be found in the northwest corner of the reserve. Another shooting range known from 19th century OS maps was found in the south of the reserve, and both areas are characterised by high concentrations of lead from spent ammunition.

In terms of Hounslow Heath's wider historical extent, Maxwell (1948) reports on Bronze Age axes, spearheads and knife and sword fragments from Hounslow held at the British Museum and of Celtic amulets and badges discovered in a field in Hounslow in 1864. Archaeological excavations on the former Feltham Marshalling Yards just to the south of Hounslow Heath in 1999 unearthed an Iron Age furnace and post holes from a round house.





The Staines Road which now forms the northern boundary of Hounslow Heath was formally a Roman Road, Via Trinobantes, that linked London to western Britain (Cornwall, 1981) and ran through the heart of the heath at its greatest extent along with the A4 Bath Road to the north. There are several historic references to Roman Camps on or close to the Heath such as that found on Heathrow Airport (Maxwell 1935).

There are various remains of former mills and other early industrial archaeological features along the course of the river Crane in the vicinity of the reserve. This section of the river is classified as an Archaeological Priority Area.

Biological Communities

National Vegetation Classifications for Hounslow Heath LNR

Heathland

HE01 *Calluna vulgaris* – *Festuca ovina* heath

HE01e *Calluna vulgaris* – *Festuca ovina* heath, species poor community

Acid Grassland

UP01a *Festuca ovina* – *Agrostis cappilaris* grassland UP01b *Festuca ovina* – *Agrostis cappilaris* – *Rumex acetosella* grassland, typical sub-community

UP05d *Nardus stricta* – *Galium saxatile* grassland, *Calluna vulgaris* – *Danthonia decumbens* sub-community

Semi-natural Neutral Grassland

MG1 *Arrhenatherum eliatum* grassland

MG1a *Arrhenatherum eliatum* grassland, *Festuca rubra* sub-community

Swamp and Fen

SW04a *Phragmites australis* swamp and reed bed, *Phragmites australis* sub-community

SW14c *Sparganium erectum* swamp, *Mentha aquatica* sub-community

Scrub

WO21 *Crataegus monogyna* – *Hedera helix* scrub

WO21 *Crataegus monogyna* – *Hedera helix* scrub, *Hedera helix* – *Urtica dioica* sub-community

WO23 *Ulex europaeus* – *Rubus fruticosus* scrub

Native Broadleaved Woodland

WO10 *Quercus robur* – *Pteridium aquilinum*- *Rubus fruticosus* woodland

WO10c *Quercus robur* – *Pteridium aquilinum* – *Rubus fruticosus* woodland, *Hedera helix* sub-community

WO10d *Quercus robur* – *Pteridium aquilinum* – *Rubus fruticosus* woodland, *Holcus lanatus* sub-community





Flora & Fauna

All data on the reserves flora and fauna is provided to (GIGL) Greenspace Information for Greater London and UK Biodiversity Action Plan Habitats and Species lists. Several species listed within the Wildlife and Countryside Act 1981 (as amended) as “Protected animals” occur on the reserve, and these are also listed in Appendix 4.



Figure 4 Flora and Fauna examples at Hounslow Heath

Geology

Hounslow Heath is situated in the London Basin, a synclinal structure in which London Clay is the surface “solid geology,” overlain by a “drift” deposit of river gravels which form part of the Taplow Terrace deposited by the River Thames during the Wolstonian Glaciation of the mid- Pleistocene period.

From 1949 to 1971 these river gravels were commercially extracted from substantial areas of Hounslow Heath. The water-filled pits left behind by these extraction operations were subsequently infilled with domestic refuse from around 1951 till 1973. Borehole samples have shown the presence of clay, bricks, wood, paper, concrete, wire, and rubber within the fill material. The fill material varies between surface fill of only 0.2 metres to a depth of 8.3 metres (LBH 1997b).

Geomorphology, Topography & Landform

Hounslow Heath is situated at 25 metres above sea level. The natural topography of the area is a flat and featureless plain as it is located on a river terrace deposit. The River Crane which runs along the western edge of the reserve cuts into the London Clay creating a shallow valley in the plain.

Hydrology & Hydrography

Boreholes installed in virgin ground on the eastern edge of Hounslow Heath in October 1994 revealed ground water consistently at around 3.2 metres (LBH 1997b).





Drainage across the reserve is variable. In those areas where the original acid gravels remain the drainage is good with little standing water and little potential for bog formation. There is some localized impedance of drainage within the landfill areas, associated with imported clay material. The wetland area complex was developed over several years, between 1988 and 2003, in one such area. Hounslow Heath has been identified as an area of relatively little flood risk by The Environment Agency.

Soil Characteristics

The soil pH levels across the reserve reflect the recent land use history of Hounslow Heath. Studies from surface soil samples taken from the eastern perimeter of the reserve in the period 1994 -95 have revealed a pH typically between 4.1 and 4.9 in areas of virgin ground but 6.5 to 7.6 in areas containing fill material (LBH 1997b). In an extensive soil pH survey of Hounslow Heath in 1995, most of the soil on the reserve was found to be acidic with a range between 4.0 and 6.5, with 65% of samples found to have a pH of 6 or less (Chin Siew Yee, 1995). Two areas of slightly alkaline soil were located (pH 7.0 and 7.8) and coincided with the presence of calcite in the soils. There is potential for phytotoxic hazards to plants at associated points due to the presence of heavy metals (Chin Siew Yee, 1995), but overall soil contamination is considered negligible in relation to its current use as public open space (LBH, 1997a).

Biological Value

Overall Evaluation: Nationally Important

The most important natural community on Hounslow Heath is the remnant lowland heathland mosaic which incorporates a mixture of heathland and acid grassland NVC communities, blocks of scrub and areas of bare ground. This mosaic, although small, is the last vestige of a habitat that once covered more than 3,000 hectares and holds many relic species of the once extensive heathland. The actual ericaceous heath covers about 5 hectares and represents about 5% of London's heathland. Both heathland and acid grassland are National BAP habitats and globally the UK holds one fifth of the world's lowland heathland.

Associated with the heathland mosaic are several plants and animals that are extremely scarce in regional terms. These habitats support one of the best heathland insect populations in London with many rare spiders, bees and wasps and beetles.

The structure of ling, bell heather and dwarf gorse are becoming very much more diverse due to regeneration efforts and is now amongst the best in London, as is the variety and structure of the acid grassland, with species such as Matt grass, Heath grass and Heath rush all on the increase.



Bare ground, a vital feature of heathland habitats is being constantly renewed through vegetation stripping for heathland creation and the creation of purpose-built bee banks. These hold a great variety of insect species many of them of Red Data Book or Nationally Notable Importance.

The wetland area now supports 0.5 hectares of reed bed and holds highly important populations of insects including Nationally Notable moths, hoverfly and soldierfly species.

There are three other major habitat types on site, scrub, broad-leaved woodland, and neutral grassland which are all of regional importance. These habitats are not rare in London terms but due to the age, size and mix of these habitats on Hounslow Heath they hold rare and diverse invertebrate communities and very high densities of breeding birds.





Cultural & Historical

Overall Evaluation: Nationally Important

Hounslow Heath has played a huge role in shaping the history and culture of the whole of west London and indeed, due to its proximity to London and its position between Windsor Castle and Westminster, has played a significant role in shaping the history of the entire nation. The Heath's royal and military links date back more than 1,000 years. Many of the nation's soldiers were trained on Hounslow Heath and some of the earliest forms of industrial production (e.g., sword and gunpowder manufacture) sprang up along the course of the River Crane close to the drilling grounds. The flat terrain and army links were also responsible for the establishment of an aerodrome on the Heath during the First World War. This became London's first civil aerodrome soon afterwards and, although it operated for less than one year, it supported pioneering international flights and the world's first scheduled air service. These services were ultimately moved to nearby Heathrow (historically part of Hounslow Heath), now the busiest international airport in the world and a major local employer.

The two key historical artefacts with which the Heath is most strongly linked in local cultural terms even today are as a landfill site and as a haunt of highwaymen.

Landscape Value

Overall Evaluation: Regionally Important

The landscape of much of this area of West London is flat. The overriding landscape benefit of Hounslow Heath is therefore, in its "urban wilderness." This is a refreshing change from the hard concrete and asphalt that surrounds it. The soft mosaic of grassland, scrub, and the fringing woodland echo of the landscapes of the medieval period and the relative size of space that are most unusual and refreshing in the context of a highly built-up area. That the Heath should be regarded as a valued landscape at all is testimony to all those that have helped transform it from the eyesore of only a few years ago. Now that it has recaptured some of its natural vegetation cover and historical appearance, it is at the very least regionally important in landscape terms. However, management input will be required to ensure that natural succession does not ultimately compromise its open character. Fortunately, this need is entirely compatible with the main conservation management objectives. Scrub control represents the major management method for achieving both these goals.

Educational Value

Overall Evaluation: Regionally Important

The rich historical and natural resources, combined with good public transport links have established Hounslow Heath as an excellent outdoor classroom for environmental interpretation. A range of services and products have already been established to support this important function. These include a range of information leaflets and notice boards.

The Countryside Ranger Service also organizes a range of events and activities throughout the year aimed at local adults and/or children to encourage use, knowledge and understanding of the site. The Countryside Ranger Service also offers a diverse structured education program aimed at schools and play schemes in the area. In recent years the rangers environmental education programme has included a variety of survival skills sessions during school holidays, as well as visits from local youth groups (cubs and scouts) for nature spotting and bug hunting sessions, as well as local school Hounslow Heath Infants school coming for a wildlife walk and bug hunting sessions. The rangers have also been reaching out to colleges and universities to engage with students studying a variety of topics to engage them in fieldwork at the Heath.





Recreational Value

Overall Evaluation: Regionally Important

Recreation represents one of the Heath's most significant contemporary functions, but it also has an extremely colourful history. Cornwall (1981) notes that "duels and prize-fights took place in the 17th and 18th centuries, and horse racing is recorded in 1754 and 1827 maps of the area. The first public schools cricket match is reported to have been played there between Eton and Westminster in 1796 and in 1871 the first polo match in England was played on the Heath between the 10th Hussars and the 9th Lancers who had recently returned from duty in India".

The use and ownership of the Heath by the army over many years had meant that public recreation was not formalised, and apparently remained restricted, until around 1979 when the site was purchased from the Ministry of Defence by the Greater London Council, almost 100 years after the first public petition calling for access.

Even though the Heath is the borough's largest public open space, the recreational accent remains very local and informal, predominantly serving the residential areas of West Hounslow, the Sparrow Farm Estate in Feltham, and adjacent parts of Whitton, all of which are within comfortable walking distance. Other than a car park and toilets there are no substantial visitor facilities and no serious investment in publicising the site as a regional recreational attraction. The provision of a bridle path has been made specifically for local horse riders from the nearby livery stables in Green Lane, partly to provide a safe local riding facility but also to limit damage by horses. The main site users are dog walkers and joggers, who appreciate the network of footpaths that have been established, but the bulk of the development work on the site relates to wildlife and the promotion and understanding of the natural resources, such as the bird hide provided within the wetland area. The exception to this rule is the Fairground Site of two hectares, which is managed as amenity grassland and serves as a local "kickabout" area for the residents of the housing estate off Frampton Road. There has been a tradition of fairgrounds and occasionally circuses utilising this area for a few weeks each year. In 2023 the rangers hosted a family fun day in this area, and it also played host to LBH's Films on the Green series with an open-air cinema showing of Mamma Mia. There are more events planned for 2024 including another family fun day and open-air cinema.

Recreation based upon nature study, however, draws visitors from a wider catchment that includes the Thames Valley and adjacent parts of Surrey, as well as across London. This stems largely from the established naturalists' network and the events and publications of the London Natural History Society, London Wildlife Trust, and others. Continuing investment in the dissemination of research data therefore has spin-off benefits in terms of site promotion amongst this specialist market. Its proximity to the River Crane Valley and links to public transport mean that the Heath is also an excellent location from which to explore the London Loop and various other footpaths which spread in a network throughout the river's catchment. Although popular with residents, much of the impetus has been to provide improved facilities for recreational walking throughout the metropolitan area by creating links with other boroughs.



Recent Achievements

Achievements 2025

Masterplan update

The Hounslow Heath Masterplan design and proposals have now reached Stage 3 (October 2025). This Developed Design stage provides a more detailed and coordinated vision for how the balance between nature recovery and public use will be achieved. It builds on strong public and stakeholder support gathered during the Stage 2 consultation (June 2025), which presented the initial concept design ideas and proposals.



A key strategic focus of the Masterplan has been the alignment of the London Wildlife Trust's 10-Year Habitat Management Plan with the wider site proposals. This ensures that habitat restoration, species protection, and public realm improvements are delivered in a phased, sustainable, and coordinated way. A series of habitat phasing plans illustrate how improvements will be sequenced to minimise ecological disturbance.

The core objectives of the Masterplan remain unchanged:

- to balance nature conservation with recreation.
- to improve accessibility.
- to strengthen ecological connectivity with the Crane Valley corridor.
- to restore priority heathland habitats; and
- to enhance the visitor experience through clearer entrances, upgraded facilities, and more welcoming spaces.

The design has now progressed to Technical Design (Stage 4), where the Stage 3 proposals are being translated into highly detailed, contractor-ready information. Pre-planning application advice has indicated that the majority of works can be undertaken under permitted development.

Delivery of the Masterplan will be phased to reflect available funding. The current ambition for the first phase is to construct the main north–south commuter route, along with a self-binding gravel recreational trail within Fair Field, creating the first accessible, shared paths across the site. Two of the four entrances will be improved, and the first phase of cohesive wayfinding will be installed, including boulder markers, interactive interpretation, and art-led storytelling. Light-touch natural play features, such as timber beams, stepping logs, and accessible seating will also be provided along the north–south route.

On 22 January 2026, a £500k GLA Green Roots Fund application was submitted to support delivery of this first phase of improvements at Hounslow Heath. Applicants are expected to be notified of the outcome in April.



10-year Habitat Management plan update

Habitat and Species Information from ecological surveys conducted by the London Wildlife Trust throughout 2024 have now been submitted as part of the 10 Year Habitat management Plan. The report confirms that Hounslow Heath supports one of the most extensive and diverse assemblages of semi-natural habitats in West London and Greater London. The site contains a rich mosaic of priority habitats and Habitats of Principal Importance, including:

- Lowland heathland
- Lowland dry acid grassland
- Wet woodland
- Reedbed
- Lowland mixed deciduous woodland

These habitats reflect long-established London Biodiversity Action Plan priorities and form the ecological foundation for future management interventions at Hounslow Heath.

Focus on Flora

Botanical survey work recorded 230 vascular plant species, including a significant number of London Notable species and Axiophytes. The presence of these indicator plants highlights the ecological integrity of the Heath's heathland and acid grassland communities and underscores the importance of maintaining open, nutrient-poor conditions.

Focus on Herpetofauna (reptiles and amphibians)

The site continues to act as a nationally important stronghold for the adder, with recent survey results confirming sustained populations and suitable breeding habitat. This status reinforces the need for targeted scrub control, structural diversity in vegetation, and sensitive access management.

Birds and Bats

Biodiversity records from Greenspace Information for Greater London (GiGL) identify a wide range of notable and priority bird and bat species using the Heath. Its mosaic of open heath, wetlands, woodland edges, and grasslands provides key resources for foraging, nesting, roosting, and commuting, demonstrating the site's importance within the wider west London ecological network.

Invertebrates

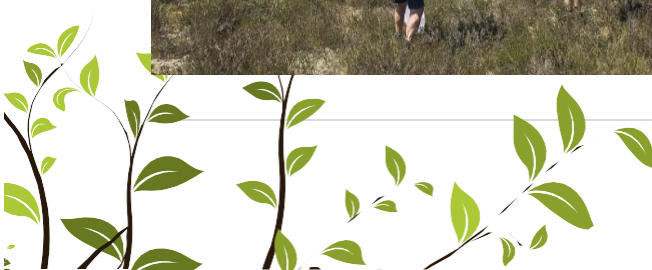
Invertebrate surveys documented 342 species, including:

- One beetle species new to Britain and northern Europe
- Five nationally rare species
- Numerous additional scarce species associated with heathland, grassland, deadwood, and wetland habitat

These findings confirm Hounslow Heath as a site of exceptional invertebrate significance, both locally and nationally, and highlight the value of structural diversity, bare ground, decaying wood, and varied microhabitats.



(see Appendix 3 for more)





Year 1 Habitat Restoration at Hounslow Heath

Work will be taking place over the winters of 2025/26 and 2026/27 to restore important heathland and grassland habitats at Hounslow Heath. This is part of the site's long-term management plan and will help improve conditions for wildlife, including reptiles such as adders.

A contractor has been appointed to carry out Year 1 of the programme, which focuses on reducing scrub in key areas to reopen the landscape and support a healthier mix of habitats.

Year 1 (Winter 2025/26)

Confirmed works include targeted scrub reduction across several heathland and grassland parcels. This will create more open areas, improve biodiversity and prepare the site for future conservation grazing.



Works on the Heath started in February, to sensitively cut and remove Gorse, broom and self-set trees.

Year 2 (Winter 2026/27)

Further restoration is planned but depends on external funding, which the Council has applied for. If funding is secured, additional scrub reduction and heathland restoration will continue across more parcels, helping to expand open habitats and support the return of grazing animals as a sustainable management method.

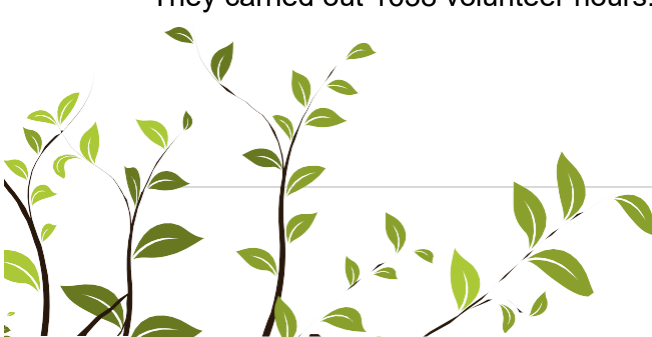
These works will help protect and enhance one of London's most important heathland landscapes for future generations.

Hounslow Heath Countryside Rangers update

- Hounslow Heath Conservation volunteers carried out 1241 hours of practical conservation, including: Scrub removal, pond clearance and maintenance, pond survey, invertebrate surveys. The group meet every Wednesday from 10am to 3pm under the guidance of the lead Greenspace volunteer ranger.
- Hounslow Heath Green Gym Rangers voted on a name change to fall under Countryside Ranger management. The group now known as 'Hounslow Heath Countryside Volunteer Rangers'.



The volunteer group meet on Tuesdays and supports local adults in the community with learning difficulties. They have main responsibility for the care and management of the dragonfly meadow as well as tending go newly installed planters in the heath yard. They carried out 1638 volunteer hours.





- 9 corporate volunteer days took place across 2025, contributing nearly 1000 hours of practical conservation, with support from BP, Costain, Volker Fitzpatrick, Mace, Aesop and Vanderlande.



- Extensive pond clearance work completed during 2025 alongside new fencing and dead hedging to protect the water bodies from dogs and leaf litter.



- Extensive scrub clearance from Bee Bank and removal of non-desired vegetation in Heather scrape.



- Harvesting seeds from the Heather and re-seeding other areas within the Heather pen.





Achievements 2024

Hounslow Heath Masterplan

A Landscape Architect consultancy team have been commissioned by LBH Parks team in Summer 2024 to develop a vision for Hounslow Heath which is referred to as a Masterplan. The development of the Masterplan will be achieved through engagement with key partners and wider community, along with surveys and desktop studies. The masterplan aims to address the following:

1. Restoring the Heathland: Targeted interventions to reclaim lowland heathland from encroaching scrub and woodland.
2. Conserving Biodiversity: Enhanced efforts to protect diverse habitats: woodlands, wetlands, and heathland that have evolved over decades.
3. Balancing Heritage and Ecology: Recognizing the historical significance of the site while prioritizing its current ecological role.
4. Strengthen Green and Pedestrian Links: Improved pedestrian and green transport connections will make Hounslow Heath more accessible, fostering stronger links between Hounslow Heath and adjacent green spaces.
5. Contribute to the Lower Crane Corridor: Through enhanced green links and habitat management, Hounslow Heath can play a pivotal role in the Crane Valley's wider ecological network, serving as a natural refuge and recreational space for nearby communities.
6. Implement sustainable management practices, such as no-fence grazing and scrub clearance, to maintain diverse habitats while creating transitional zones or ecotones between habitat types, promoting long-term ecological health and resilience.
7. Establish a balance between nature conservation and recreational use, creating a space where ecological integrity is prioritized while allowing for meaningful interaction with people.

The development of the masterplan design will take place from Autumn 2024 to June 2026. The parks team secured a £750k budget which will fund the development of masterplan design and a first phase of improvements. The parks team will look for further funding opportunities in 2025/26 to deliver the masterplan vision.

Hounslow Heath Rangers and Volunteering:

In 2024 there were three regular groups meeting at Hounslow Heath as well as a number of ad hoc corporate volunteering groups. Together these groups contributed 5937 hours of voluntary work to the site through a range of tasks including litter picking, dead hedging, removing scrub, clearing around heather, and installing fencing. This year both the Hounslow Heath Conservation Volunteers and the Hounslow Heath Green Gym benefitted from being awarded grant money from the Crane Valley Partnership Community Fund to undertake several projects across the site. These projects included meadow scything, scrub reduction and building planters in the visitor centre yard to grow vegetables and plants. These grants have allowed the groups to purchase tools and materials to carry out these projects. Additionally, the rise in corporate volunteering groups on site this year has allowed several additional projects to be carried out including some funded by the local businesses who have volunteered. This has included the making of a hibernaculum and a bug hotel by the ponds in Paradise woods as well as fencing the ponds off to prevent dog disturbance.

This year the site has also been host to 6 Sussex cows which have been allowed to roam the neutral meadows to naturally graze for 3 months.

Additionally, the scrub reduction across the site has increased this year especially around the main heather pen and on the southern side of the site. This has been achieved through a mix of tractor and ride on flailing along with the hand removal of saplings across various locations around the site.

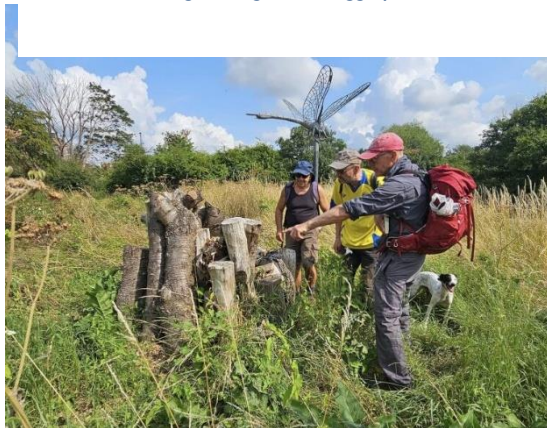




The other major project that has been undertaken on site this year is large areas of the site have had dead hedging laid down to either deter access to areas due to anti-social behaviour or to protect areas of high nature value. The dead hedging has been achieved predominantly through volunteers and rangers removing saplings and other scrub material and re-using the cuttings to build strong natural barriers.



Figure 5 above: hedge laying, right: Cisco volunteering, below: nature walk looking at stag beetle loggers



Hounslow Heath 10 Year Habitat Management Plan

London Wildlife Trust have been commissioned to produce a 10-year Biodiversity Management Plan for Hounslow Heath 2025 to 2035. Habitat and species data will be gathered by both desktop analysis of biological records and field surveys throughout Spring, Summer, and Autumn 2024. The management plan will help inform and direct contractor operational management, volunteer activities and education programme for Hounslow Heath and enable support for better management and protection of existing habitats/species; offer recommendations and associated action plans to realise future ecological potentials and strengthen the business case for future funding applications.

The Habitat Management plans are a prerequisite for understanding, planning, and implementing capital projects targeted at Nature Recovery at Hounslow Heath. The London Wildlife Trust will also look for funding opportunities to deliver improvement recommendations.





Achievements 2023

1800 metres on new fencing has been installed at Hounslow Heath in 2023. The previous fencing was fire damaged in 2022. The replacement fencing will enable conservation grazing to resume from September 2023.



Figure 6 3 images of the new fencing installed in 2023.

Hounslow Heath formed part of the borough wide response to severe weather seasonal preparedness and response action plan. Regular meetings were held between contingency planning, Greenspace and Parks to work through actions focussed on fire prevention and management.

Hounslow Heath Fungi Survey Report

During April 17th and December 14th, 2023, Hounslow Heath was found to be well represented by many genera of the major groups of fungi to be expected from lowland heath, neutral grassland, secondary woodland, and the complex habitats therein. A total of 215 species from 456 records were recorded from the heath, among which are 1 species new to Britain, 1 new to England (pending DNA) and 10 new to Middlesex.

Mycorrhizal families such as the *Boletaceae*, *Cortinariaceae*, *Inocybaceae*, *Russulaceae* and *Hymenogastraceae* were all represented by several species, from various genera such as, *Cortinarius*, *Inocybe*, *Hebeloma*, *Laccaria* and *Russula*. The Heathland and neutral grassland restoration has paid dividends in attracting a diverse mycota and the addition of grazing cattle will only help to promote this diversity.

Achievements 2022

In 2022, the countryside rangers reduced gorse in the main heather pen by 30 per cent. They also cut 30 percent of the reedbeds as part of their maintenance programme to stop encroachment of wetland areas by other vegetation and trees. The Railway line heather area was managed by rangers and volunteers, along with an adjoining 50 metre bee-bank. The neutral meadows were hand scythed in a traditional way. Community payback repaired some perimeter fencing as well as the raised beds within the visitor centre space. There was a community give away event where local people could harvest apples in the orchard for their own consumption and use.





The countryside team ran Survival skill activities with local families during the school holidays. They also ran monthly nature walks to explore interests such as fungi, reptile, plants, butterflies, and birds. Ecological surveys were carried out weekly for Butterflies, reptiles, and bird and monthly for mammals and moths.

Achievements 2021

In line with the priority actions within the Green Flag Management Plan, GS Countryside team recommendations and increased pressure on this countryside site through increased footfall during the pandemic, a successful programme of infrastructure improvements in 2021/22.

Hounslow Heath Car Park

Hounslow Heath car park was reopened to the public in October 2021 following much needed improvements. The Eco-design approach delivered a resurface car park using recycled plastic eco-grid material and pea gravel to create a more natural look and feel to the site in-keeping with the special status of Hounslow Heath. This surface is permeable, allowing water to pass through it, rather than run off it, which is the case for most tarmac surfaces – this prevents damage to the surrounding area as well as making it safer for pedestrians and drivers. In addition, the car park has clearly defined parking bays to ensure better control and management of parking preventing cars from parking on the green space and protecting wildlife, plants, and pedestrians.

The green space adjacent to the car park footprint has been sensitively protected from cars using recycled knee-high barriers. Old surface materials were broken up and recycled as part of the new pedestrian compact gravel paths.

Soft and hard landscaping and associated planting schemes aims to design out anti-social behaviour and provide safety to visitors, i.e. introduction of traffic calming measures for the safety of pedestrians with a one way system - narrowing of the road to support a single way traffic implementation; traffic calming speed cushions and speed tables, motorcycle restrictor, creation of new compacted gravel pedestrian paths and a new car free entrance into the car park; reinstatement and creation of green spaces, i.e. wildflower areas, new trees and grass to improve the look and feel of the site.

The car park design had a mixture of knee-high railings and wildflower earth mounds to protect the wildflower areas and trees but regrettably cars drove onto the earth mounds and found ways into the green spaces. In May 2023 new bollards were installed to protect the green space around the car park and all damaged areas were repaired. In 2024, it was observed that the circular driving route around the car park has developed undulations where gravel has moved. The parking bays have not been affected. While the use of Community Payback teams has helped to manage this by raking the gravel back into the potholes, the council are looking at options to manage this issue.





Countryside Rangers Hut Refurbishment

In October 2021, works were completed on the refurbishment of the former ranger's hut. The improvement works included new toilets, full refurbishment of existing unit with a new kitchen area, and disability ramps to allow full access to all. This space is being used informally as a GS Countryside ranger's office and a meeting space for volunteers to use. The aspiration is for GS countryside rangers to have a permanent office and for greater public use of buildings for education, volunteering, and community activities. This now forms part of the Hounslow Heath Masterplan work as detailed in the 2024 section. Further aspirations are for the buildings to provide a space for The Safer Neighbourhood Team and MET Police to use these facilities as a satellite office to work from, which will also help with security on site.

Boundary perimeter security works

During late winter 2021, perimeter access security works were carried out to install infrastructure that would prevent or deter motorbikes accessing the heath. This was a reactive project to deter and stop motorbikes on site. The Hounslow Heath Masterplan will look to further manage the access in line with wider strategies, guidance, and plans.





Where do we want to get to?

Green Flag Analysis

The ambition for LBH in partnership with GS and community groups is to continue to work to improve standards, develop parks and open spaces strategically according to corporate priorities and local needs.

A clear connection between the criteria identified by the Green Flag Award Scheme and the main points gained from the SWOT analysis and site review completed with the Friends and other stakeholders has helped to establish a comprehensive management plan for this site.

The management plan process is described below in the section “How do we get there?”

Consultation & Co-design

The Council has a strong partnership with the stakeholders of Hounslow Heath, co-designing the future of the park together in most initiatives and opportunities.

Regular communication between the Council, GS and the Friends group and other stakeholders will help promote a continuous, constructive dialogue, to discuss issues and learn from each other to improve overall management standards.

The Council works in close partnership with GS with monthly project and development team meetings where the monitoring and progress of these plans are discussed.

LBH engage annually with Friends groups and community groups in compiling these management plan and their progress.

Ward Councillors and the Lead Cabinet Member for Recreation, Public Spaces and Parking are regularly updated on parks development projects and strategies.

Liaison with the Hounslow Met Police and the Councils Enforcement Team on matters around ASB and public safety take place when necessary.





SWOT Analysis

A SWOT analysis is a management critique to identify Strengths, Weaknesses, Opportunities and Threats to help shape future improvements.

<p>STRENGTHS</p> <ul style="list-style-type: none">• Large number of priority habitats and Habitats of Principal Importance• Statutory Local Nature Reserve - Important site for biodiversity• Nationally Important Site for Adders• Hounslow Heath Countryside Volunteer Rangers• Hounslow heath Conservation Volunteers• Corporate volunteer groups• Environmental Education Programme• Refurbished Ranger's hut and toilet• Community Payback• Revitalised ecologically designed car park• New 10 Year Management Plan from LWT	<p>WEAKNESSES</p> <ul style="list-style-type: none">• Entrance signage, wayfinding, and interpretation of site• Budget and resources to maintain a large and nationally important site• No current Friends Group
<p>OPPORTUNITIES</p> <ul style="list-style-type: none">• Deliver 10 Year Habitat Management Plan to restore and retain good habitat condition• Expand areas in Natural England Stewardship• Introduction of forest school and other environment learning• Creation of outdoor education area• Elevate status to one of regional or national significance, i.e. SSI or NNR• Develop and Implement Masterplan that connects people and Nature• Connect with the wider Crane Valley• Wayfinding Strategy• Partnership with Maple Leaf Golf to increase biodiversity on adjoining site.• Increase numbers of corporate volunteer groups• Creation of a Friends Group• Increase public health outcomes for health and well-being.• Mitigate against ASB and Crime through strategic design and activation of site• Potential for future mixed conservation grazing, currently only cattle.	<p>THREATS</p> <ul style="list-style-type: none">• Lack of strategic habitat management leading to scrub and woodland encroachment on important heathland and adder habitat• Car park surface needs replacing• Excessive car numbers and use of car park offer• Antisocial behaviour• Security of ranger's hut and protected habitats• Climate change/disease/drought/pests and invasive species• Arson• Rough sleepers• Motorbikes



How do we get there?



Vision & Objectives

Vision for Hounslow Heath:

“The Friends of Hounslow Heath, The Conservation Volunteers, Green Gym, the London Borough of Hounslow Lampton Services Greenspace will work together to create and maintain an exemplary centre for community involvement and enjoyment which is beautiful, wildlife friendly, sustainable, resilient to climate change, safe and accessible to all.”

Key objectives for Hounslow Heath are:

- To continue to work closely with the Friends, volunteer groups and other users of the facilities to adequately maintain and improve the facilities.
- To ensure that Hounslow Heath is a place that is secure, safe to use and is clean and well maintained.
- To ensure that the management of the landscape maintains the heritage character of the park.
- To ensure that the park is promoted and managed to provide a high-quality service for the people using it.
- To continue to encourage and promote community involvement in the management of the park.
- To ensure that the management of the park protects and enhances the biodiversity of the site and borough.
- To promote health and wellbeing.
- Create opportunities for connecting green spaces to wildlife and increasing the boroughs ecological resilience and connectivity.



Meeting the Green Flag Award Criteria



Management of Hounslow Heath

This sets out guidelines and general principles to be followed in delivering the vision and objectives outlined above.

We value diversity and are committed to delivering a service that puts equality of opportunity as a priority. Management of the Hounslow Heath needs to deliver high standards of maintenance of all aspects of the soft and hard landscaping, the management of habitats and the outdoor education program, within existing revenue budgets and through capital infrastructure funding opportunities.

Delivery Partners

The Council works pro-actively with a range of interested parties and volunteers in consulting with local people regarding their views of the facilities and any impact that is made on their lives. Continuing this working is high priority in relation to the management of the countryside site.

GS Countryside Team are responsible for maintaining countryside sites within the LBH Parks Service. Maintenance is carried out by the contractors' operatives and dedicated Countryside Rangers and volunteers who have the necessary skills to achieve high and consistent horticultural standards.



A Welcoming Place

The following management priorities help ensure that Hounslow Heath continues to be a welcoming area.

Entrances

GS Countryside Team regularly manage and maintain all site entrances to ensure they remain accessible for all, secure and free from any obstructions. This includes gate and surface maintenance where required, clearance of leaves, and gritting during icy conditions. As a general policy our parks are not locked at night, as there is evidence that this attracts antisocial behaviour.

Signage

Park signage is kept clean and regularly inspected, any repairs are carried out promptly by GS Countryside Team.

Our parks have a variety of signage, including welcome signs at main entrance points, with general site information, community event boards, interpretation signage, and enforcement and warning signage where required. For more information, please refer to the “Marketing Section” below.

Visibility

Where suitable vegetation is managed by GS Countryside Team to help improve site lines for the personal safety of park users across the site. Lighting in our parks is minimised and only considered along main pathways. This approach is generally supported, as there is evidence that lighting can create a false sense of safety, and in fact can attract antisocial behaviour. This approach is supported by Parks for London, the police, and other organisations, developing strategies to help tackle Violence Against Women and Girls (VAWG).

Graffiti Removal

As a part of our aim to make the borough safe, green, and clean we are committed to reducing and removing graffiti. The site will be regularly inspected for graffiti. All graffiti will be removed within 7 days of notification, where the graffiti is racist or offensive it will be removed within 24 hours of notification.

Healthy, Safe & Secure

The following management priorities help ensure that Hounslow Heath continues to be a healthy, safe, and secure place.

Health & Wellbeing

We recognise the benefits that our green spaces can make to the health of our residents. We are committed to developing active environments that enhance leisure, sport, physical activity and play opportunities in priority areas.

Useful Links:

- [Hounslow Joint Health and Wellbeing Strategy 2023-2026](#)
- [Data Hub](#)

Better Points

BetterPoints is an app that rewards residents for getting active. Activities such as walking, cycling, running and wheeling earn users BetterPoints that can be exchanged for Highstreet vouchers or donated to local charities. You can also earn BetterPoints from attending our Healthy Hounslow services. Find out more [here](#).

 BetterPoints





Healthy Hounslow

Healthy Hounslow is a partnership between several organisations supporting people in leading healthier lifestyles; to become more active, eat well and stop smoking. The partners that make up Healthy Hounslow are Hounslow Council, West London Trust, Feltham & Bedfont Primary Care Network, MoreLife, Maximus/ BeeZee and Lampton Leisure. The services and support offered by Healthy Hounslow are: Smoking cessation, Health and wellbeing coaching, Healthy weight management, Exercise on referral, Cook and eat sessions, and Community NHS Health Checks.



You can find out all about Healthy Hounslow at our website www.healthyhounslow.co.uk

Site Safety

All GS staff and contractors play an important role in terms of a visible staff presence. All are uniformed and where necessary will wear highly visible clothing. All works will have been risk assessed to ensure the highest level of public safety.

LBH and GS maintain close oversight and management of all subcontractors and other agencies working within our parks and open spaces, adhering to CDM regulations and relevant licence agreements.

Control of Dogs

Most dog owners act responsibly and keep their pets under control. However, the Council continues to receive comments and complaints from residents regarding the behaviour of some dogs and the actions of a minority of irresponsible dog owners within parks and open spaces.

To address these ongoing concerns, the Council carried out a public consultation during 2025 to gather residents' views on a range of dog control issues. A report summarising the findings from the consultation was presented to Cabinet in late 2025. This resulted in the decision to introduce a dog control Public Space Protection Order (PSPO).

The PSPO includes seven key requirements and restrictions for dog owners and dog walkers. Some of these were previously in place under previous regulations and have now been consolidated in this single, update order.

For more information on the status and findings from the dog PSPO consultation please see the webpage [here](#).

Supported by a borough-wide campaign encouraging dog owners to [Take The Lead](#), the new PSPO will be enforced from 1 March 2026. It sets clearer expectations for dog walkers and gives the Council authority to issue on-the-spot fines to those who don't follow the rules.



Hounslow Heath welcomes responsible dog owners. Some areas are already dog exclusion zones, due to cattle grazing etc. and this has been reflected in the PSPO consultation. For more information on the status and findings from the dog PSPO consultation please see the webpage [here](#).





Community Safety

Hounslow Community Safety Partnership (HCSP) is responsible for reducing crime, disorder, and substance misuse in the London Borough of Hounslow. Along with other supporting partners, HCSP brings together key local agencies including:

- London Borough of Hounslow – Safer Communities Team
- Metropolitan Police Service (Hounslow Division)
- Hounslow district of the National Probation Service
- Hounslow NHS Trust
- London Fire and Emergency Planning Authority
- [Community Safety](#)

The Council is introducing a new enforcement team in March 2026. The new team will be focusing on fly-tipping and littering, noise complaints and enforcing Public Space Protection Orders (PSPOs). They will also be engaging with local communities and educating residents on how to dispose of waste and recycling correctly.

The team will be equipped with hand-held devices allowing them to identify, capture, report and respond to issues in real-time and reassure residents that issues are being identified and dealt with. Investment in new AI technologies and SMART sensors will also be developed to enable fast and targeted responses.



Enforcement officials on a walkabout

The Parks Team has established a Violence Against Women and Girls (VAWG) Steering Group in partnership with the Metropolitan Police. The group meets regularly to review hotspot areas across Hounslow's parks and open spaces that have been identified as priorities within the VAWG agenda. Together, they assess recommendations, explore solutions, and coordinate ongoing projects and work programmes aimed at addressing these issues.

A broad range of stakeholders participate in the group to share current concerns, highlight priority areas, and discuss operational capacity. Representatives include the Met Police VAWG Lead for Hounslow, Police Intelligence Analyst, Parks Team, Safer Communities, Lampton Greenspace Countryside Team, Rough Sleeping Unit, Domestic Violence Reduction Unit, and Gunnersbury Park.





Some of the actions from the steering group have led to:

- Increase police patrol in priority parks
- Community engagement with local residents and thereby increasing natural surveillance
- Removal of hiding spots and management of overgrown vegetation
- Creation of a Safety in Parks poster (in conjunction with the police and their reporting procedures)
- Raising awareness on reporting rough sleeping and supporting rough sleepers to reduce stigma
- Insight and lessons learned sharing
- Deployment of Safer Patrolling officers in Priority parks
- Additionally, they contribute to the WA – BCU (West Area – Borough Command Unit) meetings, which include boroughs of Hounslow, Hillingdon, and Ealing.

Staying safe in our parks

It's important that we all feel safe in parks and open spaces. If you're worried about anything in Hounslow parks, let us or the police, know:

- In an emergency, always call 999.
- If it's not an emergency, call 101 or the easiest way to contact us is online at www.met.police.uk
- To report safety concerns in public places without giving your name (anonymously) visit www.met.police.uk/notices/street-safe/street-safe
- To report ongoing concerns, get in touch with us at customerservice@hounslow.gov.uk

We are working with the police to keep your neighbourhood safe. If you want to find out more and meet your Safer Neighbourhoods team, visit www.met.police.uk/area/your-area



Well Maintained & Clean

The following management priorities are designed to ensure that Hounslow Heath is clean and well maintained.

Grass Maintenance

GS employ several different management approaches to maintain grass areas within our parks and open spaces. Generally, grass areas are managed either as amenity grassland, rough grassland, or as wildflower meadow. Within many of our larger parks, the grass is left uncut as part of the annual No Mow May campaign which is also referred to as [Hounslow's Natural Summer](#).

Hounslow Heath is formed of a mosaic of habitat types; however, some areas are managed as amenity grassland, notably the field area near the main entrance, which is used as an event space and general recreation. Other areas are managed suitably dependent on habitat type, relying upon cattle grazing and traditional hand cutting methods in natural meadow areas as well.





Amenity Grassland

Amenity grassland consists of areas used for general recreation, and formal and informal sports, and can include wide-open spaces or those areas planted with trees and shrubs.

These areas are regularly cut during the growing season, to ensure they can continue to be used for recreation throughout the year (see Appendix 2 Annual Maintenance Work Schedule). Grass edges, whether they are against paths, fences or walls will be cut at the same time as the rest of the grass using strimmers in most areas.

Rough Grassland

Rough grassland consists of areas which are cut less frequently generally 2-3 times a year. These are usually areas which are less accessible to the public and help support beneficial insects and small mammals, as well as protect features such as boundaries, hedges, and ponds.

Trees

Trees are an incredibly significant feature in the borough's parks and open spaces. They provide a variety of benefits not only to visitors but to the overall environment of an area, creating habitats and providing natural shade. They form an important part of the borough's green infrastructure, and this is reflected within the council's [Green Infrastructure Strategy](#).

Tree Maintenance

Trees within parks and open spaces are subject to inspection by suitably qualified and experienced GS Arboriculturists. This is to identify and remedy any unacceptable risks to people using the sites, or the removal of trees that are extensively decayed compromising their structural integrity. Tree pruning is only carried out where necessary for risk management purposes or where formative pruning is necessary; this approach allows Hounslow's parks to retain a natural landscape with well-formed specimens.

Hounslow Council works closely with Friends, Councillors and Lampton Services Greenspace tree team to consider the tree population within Hounslow heath to make improvements and ensure that there is continuity in the way that the trees are managed.

Tree Planting

Between 2020 and 2024 the Council set ambitious tree planting targets, successfully planting over 25,000 new trees and whips in parks and open spaces. This formed one of the main ongoing targets set out in the [Green Infrastructure Strategy](#).

Since 2020, Hounslow Heath has had around 168 trees and whips planted around the site.

Greentalk

Hounslow Greentalk is an innovative new platform developed as a bespoke resource for Hounslow residents. It has lots of clever features to help explore public trees and make a positive difference to the environment. The platform provides a unique opportunity for Hounslow residents to adopt newly planted trees and help their borough become greener.

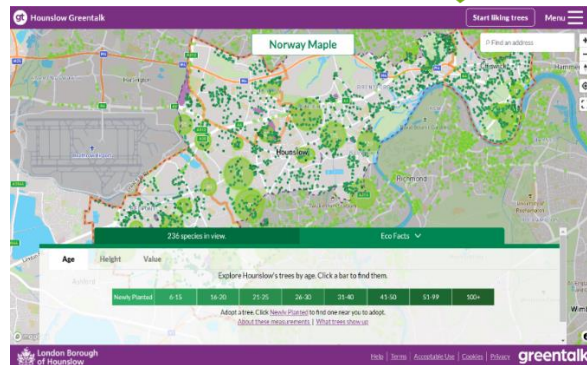
Anyone who wants to find out about trees in the borough can use the Greentalk interactive map to explore their area through a tree focused perspective.





Other features include but not limited to:

- Adopting a tree
- Watering notifications
- Green walks
- Tree giveaways



Over 120,000 trees have been mapped, and around 33,000 can be liked by registered users. Liked trees are saved as favourites and can be accessed through the user profile. The data used to display all the information on Hounslow Greentalk is derived from the council's tree partners who manage the trees in the borough and regularly provide up-to-date information to keep the system as relevant as possible. If a resident is aware of a problem with a tree, Hounslow Greentalk can help them report the exact tree with the right information to the relevant tree partner.

For more information, please visit [Hounslow Greentalk](https://www.hounslow.gov.uk/greentalk)

Wetland Management

Sustainable Urban Drainage Design

The Parks team work closely with the Flood Risk team, to help inform on Sustainable Urban Drainage (SUDs) features and design during parks development projects. This approach helps provide ecological and sustainable solutions, to help alleviate flooding within urban areas.

Streams & Rivers

The River Crane is situated nearby to Hounslow Heath, with various access points which are managed and maintained by GS. The River Crane is managed by the Environment Agency, and we have a close working relationship with them to help ensure both public safety and good practice in managing the riverbanks and watercourse itself.

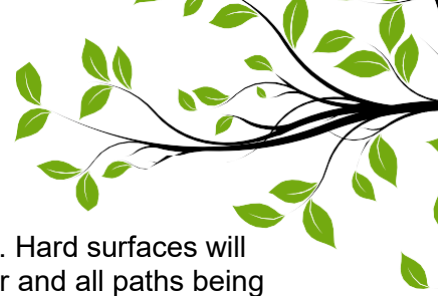
Cleansing

The collection of litter is extremely important in maintaining the appearance of Hounslow's parks and open spaces and has a direct effect upon how people treat and respect the site. Litter is collected and bins emptied daily by the GS cleansing crews. Any occurrences of fly tipping are cleared by GS within 48 hours of notification, and we work closely with the Enforcement Team to investigate fly tipping issues where possible.

Park Furniture & Fittings

GS Countryside Team ensure that all furniture is clean and will check benches, notice boards and bins on a regular basis. Items will be cleaned when necessary. Any repairs will be reviewed, and funding opportunities explored with the aim of rectification as soon as possible.





Paths and Hard Surfaces

Pathways and hard surfaces will be kept clean with litter and leaves removed. Hard surfaces will be maintained in a weed free state. Paths will be kept in a good state of repair and all paths being inspected annually. Any necessary repairs will be reviewed, and funding opportunities explored with the aim of rectification as soon possible.

Buildings & Structures

GS Countryside Team manage and maintain most buildings and structures within our parks and open spaces. These include both buildings that are open and in use by the public (such as visitor centres, chapels, toilet blocks etc.) as well as disused buildings which are closed to the public.

Hounslow Heath contains a Rangers compound and office space near to the main entrance. This is used primarily by the Rangers to manage operations and to host volunteering and education groups. There are several buildings within the compound which are used, all of which have been surveyed over recent years to ensure their safety.

Currently the building on site is being used by the rangers and volunteer groups and the team are exploring options within the masterplan for future opportunities with the building. The centre has benefitted from a comprehensive refurbishment, but there needs to be upkeep funds in place to run the centre for items such as cleaning, Wi-Fi, utility bills, ongoing repair, and maintenance, etc

Environmental Sustainability

The following management priorities outline how Hounslow Heath is managed in a sustainable way.

Litter Recycling

All litter is taken to Transport Avenue, the West London Waste Authority site within Hounslow borough. It is then loaded onto trains and taken to an energy waste site in Avonmouth, where it is used as a renewable energy source.

Green Waste Recycling

All green waste is either reused or recycled.

- Grass clippings are spread and left in situ in the park.
- Wood chippings are used on flowerbeds to provide a compost and weed control.
- Other green waste (shrub pruning etc.) is taken to Transport Avenue Waste Disposal Site, where it is then transferred by road to a composting facility for processing.

Pesticides

The use of glyphosate-based herbicides to treat weeds was stopped in 2020, to help promote biodiversity. However, removing the use of herbicides has presented operational challenges, as herbicides have always been considered a cost-effective solution and less labour-intensive results.

Following extensive discussions, it was agreed by Cabinet that glyphosate-based herbicides would be reintroduced for the 2025 season. The reintroduction was necessary due to the increasing prevalence and density of weed growth, the impact of weeds on pathway safety and infrastructure, and the limited effectiveness of manual removal alone. This decision is due to be reviewed again in 2026.

Peat Use

GS do not use peat, or any peat-based products within Hounslow's parks and open spaces.





Infrastructure

GS follow the Council's procurement guidelines when sourcing replacement or new infrastructure items. This includes prioritising products made from recycled and environmentally and sustainably sourced materials wherever possible and financially feasible. For example, using trees felled onsite for seating and fence work, and sourcing fibreglass heritage litter bins to replace ironwork bins. Products made from tropical hardwood and other unsustainable sources are not used.

Fuel, Feet & Power Tools

Fleet

As part of an ongoing trial within the Lampton group, the GS fleet use an alternative diesel product, Hydrotreated Vegetable Oil Fuel (HVO). HVO meets OEM fuel specifications and is certified to be a 90% CO2 saving on normal diesel. This efficiency is better than current electric vehicles and is a great stop gap to future technologies given the age of the HGV fleet. It is hoped that a switch to HVO will help GS transition to low carbon technologies in a systematic way, giving time to manage various operational constraints by limiting early adoption of electric vehicles.

Power Tools

GS are continuously trialling the use of electric power tools as alternative to 2 stroke machinery. They currently utilise several battery powered trimmers and blowers and continue to evaluate the effectiveness and development of the technology and replacing older traditional machinery as it reaches end of life.





Biodiversity & Heritage

We manage our parks and open spaces by ensuring that where possible we maintain a diverse range of age, species and structure in the canopy, understory and herb layers and aquatic spaces. This is achieved by:

- Managing site specific habitats such as acid grassland, mature veteran trees, rivers, ponds, and woodlands.
- Supporting the borough's wildlife through interventions such as birds and bat houses, stag beetle loggeries, aquatic ledges and educational signage.
- Enhancing existing aquatic and terrestrial habitats to support a diverse range of flora or fauna.
- Exploring opportunities to create new habitats such as wildflower meadows, native hedge planting, aquatic ledges, and copses.
- Consider introducing sympathetic mowing regimes where suitable, for example leaving areas of rough grassland around trees.
- Recognising the effects of climate change e.g., drought, wildfires, floods, disease, biosecurity.
- Prioritising sustainability through resilient planting e.g., drought tolerant trees and plants.
- In 2021 LBH commissioned a baseline report of invasive species Parks and open spaces portfolio, surveying 195 sites. This information was used to procure a specialist contractor to remove targeted species over a five-year period beginning in April 2025 and running for 5 years. This will seek to eradicate: Japanese Knotweed, Giant Hogweed, and floating Pennywort, and provide advice on how to deal with Himalayan balsam. The initial round of treatment has been very successful, and we have already seen a reduction in the size and viability of INNS patches.
- Biosecurity – Anyone responsible for plant supplies must ensure that all plants and associated soil are supplied free of pest and disease at all points in the supply chain. To achieve this, GS consider the latency period and life cycles of all pests and diseases. Special attention to biosecurity is given to imported stock.
- GS procurement will always prioritise suppliers that are able to demonstrate a supply chain audit trail (for example, are part of a recognised Plant Health Assurance scheme) that ensures plant material sourced within the UK is under a regime of biosecurity-aware production and follow nationally agreed good practice guidelines.
- The Nature Recovery Action Plan (NRAP) is a part of Hounslow's Greener Borough Framework and was adopted in 2023. A stakeholder board -Nature Recovery Stakeholder Board (NRSB) was launched in February 2024 and is led by the Head of Service with quarterly meetings held in various locations across the borough.
- Site of Importance for Nature Conservation (SINCs)
During 2025 LBH identified the need to review the current ecological status of its 47 Sites of Importance for Nature Conservation (SINC) as part of the actions set out in the Nature Recovery Action Plan (NRAP 2023–2028).





Although these sites have been assessed in the past, with the most recent assessments carried out in 2012, little information exists about their current condition from which to highlight opportunities to protect and enhance biodiversity value.

Therefore, an ecological appraisal of all 47 individual SINC across the borough was commissioned to establish an updated baseline of habitat types at each site, and their condition. This was conducted by Ecosulis, in the form of a Preliminary Ecological Appraisal (PEA) comprising of the following:

- Desk-based review of existing ecological information provided by LBH and local record centre data, alongside open-source datasets, to identify any legally protected or notable species, and/or habitats that may be present; and
- A field survey to determine current habitat types present on the Site, using the latest UK Habitat Classification (UKHab) methodology and incorporating an assessment of habitat condition; and
- Preparation of a concise report summarising the findings of the desk study and field survey, and details of conclusion and recommendations.

The purpose of the PEA is to identify early opportunities for enhancement to improve biodiversity value at each site, and, where possible, highlight protected and notable species or habitats which may benefit from or be negatively impacted by habitat interventions at the Site. We anticipate all the PEAs on Council land will be available to view via the Council's website by early summer 2026.



Methods used by Ecosulis whilst surveying sites





Habitat Management

The landscape and habitats at Hounslow Heath are actively managed to try to increase species diversity. This management regime is carried out throughout the year with surveying done in the Spring and Summer months and initiative-taking habitat management completed outside breeding/growing seasons in the winter.

The winter management is driven largely by the results of the various monitoring programs. Starting in winter, sections of reed bed are cut once every 5 years to stop them succeeding into willow scrub and ultimately woodland. The leaf litter is also raked off from the base of the reeds to stop sediment building up, which would trap silt around the reed bed and lead to encroachment by willows. Some insect larvae, such as Wainscot moths, develop in the reed stems for several years; hence the reason for a 5-year cycle before we cut the same section again.

Where succession is advancing, willows have started to grow and mature in the reed beds. The Countryside Rangers remove them as they dry out the beds and stop light getting to the reeds themselves, as well as adding a considerable amount of leaf litter, thus speeding up the process of succession. Reed beds are one of the UKBAP priority habitats. The meadows and most other grassland areas in the site are managed for wildlife too. They are grazed or cut at the end of summer and the risings removed to reduce the level of nutrients returning to the soil, thus ensuring they remain in an optimum condition for the more herbaceous species of plants. In the main nature reserve woodland area, glades and rides are cleared in the ground vegetation to create subtly different habitats and microclimates allowing sunlight to reach the woodland floor. These slight differences allow a 20 wider range of species to inhabit this area than if the habitat were the same throughout. For the most part, much of the scrub is left as it provides good nesting habitat for birds and is also heavily populated with insects.

Conservation

Hounslow Heath Site has a long history of involving visitors in nature conservation. The Hounslow Heath Conservation Volunteers, and the Hounslow Heath Green Gym rangers, corporate and other groups work with the Countryside rangers in undertaking weekly conservation tasks on the Parks wetland, Heathland, and woodland habitats. The Countryside team undertakes relevant species surveys including moth trapping, butterfly and bird transects with university students and individual work experience trainees.





Other activities include:

- Wildlife Information sheets that go out on the information boards and at the centre quarterly
- Environmental Stewardship Grazing Scheme delivering habitat management through cattle.
- Regular species and habitat surveys carried out with volunteers, students, and work experience.
- Weekly habitat conservation task program
- Programme of student, apprentice and work experience working in conservation
- Wildlife Logbook for recording of wildlife by site visitors



Community Involvement

Parks and open spaces foster community cohesion by serving as venues for events, volunteering, and shared activities. Involving residents in the management and decision-making processes of parks ensures that these spaces reflect community needs and values, encourages a sense of ownership, and strengthens stewardship. Active participation not only improves the sustainability and relevance of green spaces but also builds stronger, more engaged communities.

Friends Groups

The Countryside Manager, Rangers and LBH Parks team work closely with the friends' groups, volunteers, community groups and third parties to explore funding opportunities and ensure opportunities for the needs and requirements of a diverse borough population are reflected in current and future improvement plans. We regularly attend meetings, site visits and planning committees.

The countryside team ensure that noticeboards on site are accessible for the Friends Groups, so that they can publicise events, meetings, improvement works etc. Community Groups play an important role in engaging the wider community in the park and provide invaluable assistance to the Council and the Parks Team.

The Parks Team provide support for applications to the Council's Thriving Communities Fund. More information about the scheme can be found on the Council webpages [here](#).

The Hounslow Friends of Parks Forum holds quarterly meetings and act as a support network that provides networking opportunities for local groups. The forums are facilitated by [Habitats & Heritage](#) who are a west London based organisation who help support new and established Friends Groups.

The Parks team engage with people from a wide range of backgrounds to increase representation and improve access to our green spaces, while also supporting placemaking and a stronger sense of belonging through engagement. This has included working with groups such as the Care Leavers team, the Youth Council, refugees and asylum seekers, Duke of Edinburgh students, faith groups, attending careers fairs at West Thames College, and collaborating with EDI networks and local educational institutions.





There are two strong and supportive groups on site at Hounslow Heath, Hounslow Heath Conservation Volunteers and Hounslow Heath Countryside Volunteer Rangers.

All groups are extremely active in progressing improvements and diversification of the park's facilities. These groups are composed of residents and represent the core users; dog-walkers, people taking independent exercise and families with children. The groups work diligently, meeting regularly with Parks team, the police, and Community Support Officers to discuss the park and neighbourhood matters.



Figure 7: Left- HH Conservation Volunteers tea break, Right-Volunteers creating a Hibernaculum



Volunteering

The Council and GS work with the public to inform, educate, and volunteer in managing habitats through event opportunities and specific projects such as school planting in greenspaces, green gyms, tree planting and habitat surveying. Community involvement and engagement in nature conservation projects helps to increase the health and wellbeing of our residents.

The GS Countryside Team help manage and coordinate several volunteer groups across the borough. More information can be found on the Parks Hub webpages [here](#).

Marketing

Promotion and marketing of Watermans Park is carried out by a range of measures to ensure that local people and visitors to the borough are aware of the facility.

Entrance Signage

The design principles of our recent signage refresh encourage greater user engagement in exercise and outdoor activity by using pictograms and maps to illustrate the facilities available in the park and the surrounding area. It promotes the unique character of each park and its association with the community and presents a consistent London Borough of Hounslow parks identity.





Onsite Promotion

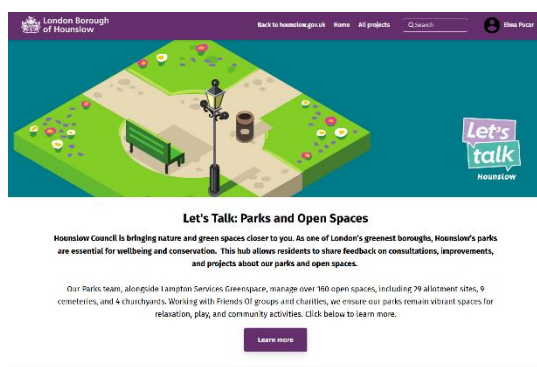
To promote events and activities in our parks, weatherproof posters and banners are used to display up and coming events and activities across the site and promotional materials are shared with local community groups. Noticeboards are also used by the Council and local communities to share upcoming events and activities as they are accessible for all.

Web & Press

The Council's website has a dedicated Parks and Open Spaces section which can be found [here](#). You can find general information about the service, with useful links, advice, and reporting channels for customers to use.

Parks Hub

The Consultation and Engagement platform Let's Talk Hounslow has a new dedicated Parks Hub which includes current consultations, surveys, and live projects, as well as a digital noticeboard. Since the launch in February 2024, the site has had over 27,800 visitors to the homepage. To view the hub visit [here](#).

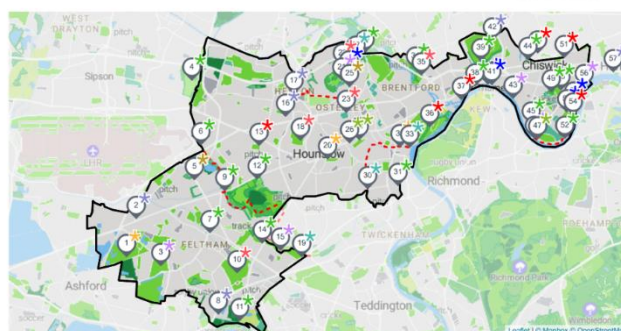


Hounslow also has several other websites which are designed to engage with the wider community about our services and the opportunities available in Hounslow.

- Find out what's on [InHounslow](#)
- [Hounslow Nature Network](#) is a new resource bank to connect you with local environmental organisations across London
- A dedicated [Nature and Greenspaces](#) section on Hounslow Connect, the go to platform for local activities, advice, guidance and support in Hounslow
- Promotion through Go Parks London- <https://www.goparks.london/boroughs/hounslow>
- London National Park City Mini-Guide for Hounslow, celebrating Hounslow's great outdoors [Hounslow's Mini Guide](#)

LONDON NATIONAL PARK CITY Hounslow Mini-Guide*

LONDON
NATIONAL
PARK CITY
IS OPEN*



Welcome to the first London National Park City Mini-Guide for Hounslow, celebrating Hounslow's great outdoors. Use it to find places to explore, play, or simply sit; groups to join and paths to walk; activities on land or water to try. Get there on foot, by bicycle or public transport.





The Council also has an active social media presence on [Facebook](#) and [X](#) with the handle @LBofHounslow.

To create community awareness for all its facilities the Council regularly produces articles and press releases about activities and facility development. The Council publishes a regular newsletter, Hounslow Matters, which is provided to all residents and includes news and information about our services, including parks and open spaces. To download the latest publication please follow the link [here](#).

Lampton Greenspace is a part of the Lampton Services Group who have their own social media platforms.

- <https://www.lamptonservices.co.uk>
- X- @TheLamptonGroup
- Facebook- [lamptonservices](#)
- Linked In- [Lampton Services](#)
- Instagram- [@lamptongroup](#)

Events

The Council encourages the hire of parks to appropriate organisations for commercial and community events. Events are held in accordance with the Parks and Open Spaces Events Policy found on the council webpages [here](#).

The countryside team continue to support and encourage the local community to use the park as a venue for appropriate community events and encourage groups to promote the parks as part of their marketing plans as well.

The Parks Team work closely with the Friends Groups who produce several newsletters to publicise the park to their own database of users. With our close relationship to the Friends Group we ensure we feed into their regular meetings to promote the work we do for the parks and open spaces.

2025

- Many volunteering events took place this year, from countryside rangers to corporate teams.
- 2 Drop-In Sessions were organised as part of the Heath Masterplan Consultation in the summer.

• Films on the Green

Residents took part in helping to choose which films to watch and what parks to watch them in. Hounslow Heath was chosen with a family favourite of Mufasa: The Lion King (2024)

It was great to see so many families coming out to enjoying a sense of culture and community through watching a movie and being outdoors- Our parks were truly transformed into bustling hubs of activity on an otherwise ordinary June evening!





2024:

Funfairs - Regular funfairs throughout the year

2023:

'Films on the Green' - As part of the Summer of Culture programme of events we had through the Summer '23, our parks were used as a free open cinema for the locals to enjoy. Tickets were free but had to be reserved through a booking system to ensure no overpopulation. Families and individuals were thrilled, some cosplayed as their favourite characters, some brought their own picnics... it was a fantastic experience, and we hope to continue this idea moving forward across more of our parks.

Funfairs - Regular funfairs throughout the year





How do we know we have arrived?

Monitoring & Review

This management plan has been designed as a live document that will guide development in the park over the next five years. Progress will be subject to monitoring and review to measure success and delivery of aims.

LBH Parks Officers work closely with GS and the Friends group to monitor progress and discuss future plans. This includes:

- Performance against the requirements of the Management Plan
- Provision and analysis of infrastructure surveys
- Provision and analysis of asset surveys
- Monthly project meetings
- Quarterly Friends Forum
- KPI's and performance monitoring (see Appendix 5)

An annual SWOT analysis will be carried out by all stakeholders and, together with the information gathered from all the monitoring methods will be recorded and fed into annually updated management plans.

GFA Judges feedback and award outcome will enable continuous learning, development and improvement by all partners involved in the award process. Discussed at monthly Parks and GS management meetings and meetings with stakeholder.

Action Planning

Our action plan for Hounslow Heath is provided in Appendix 1. This plan is based on an evaluation of the SWOT analysis together with other projects and plans raised by the Friends group. The action plan lists actions and categorises based on timescales and the Green Flag award criteria. The plan will also allocate ownership for each task to the key stakeholders.

Appendix 1



Hounslow Heath | Green Flag Award | Action Plan Updated 2026

Key to Action Plan

Green Flag Award Criteria		Stakeholders		Delivery Timescales	
W	Welcoming Place	LBH	Parks Service Management Team	S	Short term (less than 1 year)
H	Healthy, Safe and Secure	GS	Lampton Greenspace	M	Medium term (1 to 3 years)
VM	Well Maintained and Clean	SH	Stakeholders – Friends of Hounslow Heath/ Hounslow Heath	L	Long term (3+ years)
S	Sustainability		Conservation Volunteers/Green Gym	O	Ongoing
BH	Biodiversity and Heritage				
Community	Community				
Mkt	Marketing				
Mgt	Management				

MANAGEMENT ACTION	STAKE-HOLDER	GREEN FLAG CRITERIA	TIME-SCALE	STATUS 2026
Develop a Hounslow Heath masterplan through extensive consultation	LBH	W, H, WM, S, BH, C, Mkt, Mgt	M	The Hounslow Heath Masterplan has progressed into Stage 4, building on previous design and engagement work. A landscape consultant, commissioned in August 2024, has supported the creation of the concept design and vision through a co-design approach with local communities and key stakeholders. The main Masterplan development took place in 2024/2025, with Stage 3 completed in October 2025. Stage 4 will run to June 2026, refining proposals and preparing for future delivery. A total of £750,000 funding is secured. Phase 1 implementation is planned for 2027/2028, initiating on-site improvements across Hounslow Heath.
Fully resurface car park and landscape car park area	LBH, GS	W, S	S	Car park surfacing works completed in October 2021 have since deteriorated. Update: the car park surface now requires full replacement, with upgrades options being explored.
Improvements to main entrance design	LBH	W, WM	S	Completed October 2021.



MANAGEMENT ACTION	STAKE-HOLDER	GREEN FLAG CRITERIA	TIME-SCALE	STATUS 2026
Resurfacing of pathways	GS	W, H, WM	O	The Masterplan pathway strategy defines three key routes: a 4m primary commuter path, a 2.5m recreational trail, and a 1.5m wild trail. Together they create clear site connectivity, support leisure and commuting, and link to the Crane River corridor while ensuring inclusive access.
Replacement of end-of-life fencing and gates across Hounslow Heath.	LBH, GS	W, H		This forms part of the masterplan to identify priorities for boundary treatment and to explore fenceless grazing opportunities. In 2023 large sections of stock fencing were replaced following fire damage in 2022.
Improvements to staff and volunteer welfare facilities	LBH, GS	W, H, WM	M	Completed October 2021. Water connection issues have been resolved in 2023. A business case is being written to open the centre to the public in 2024/25 which is focussed on establishing a financial model to pay for upkeep costs, including Wi-Fi, utility bills and cleaning (e.g., toilets).
Review signage design and replacement program for all site in line with new parks signage strategy to promote activity	LBH	W, S	M	The updated site entrance signage followed the borough's adopted design format, strengthening identity across Hounslow Heath. As next steps within the masterplan, key interpretation boards will be reviewed and updated to better highlight the site's ecological value. New signage, including a bespoke Hounslow Heath Nature Reserve entrance sign, will be delivered in future phases. A phased wayfinding strategy will be implemented to improve navigation and enhance connections across the site.
Anti-Social Behaviour – signage review, continue stakeholder engagement and targeted enforcement.	LBH, GS, SH	W, H	O	Working in partnership with the Safer Neighbourhood Team and the MET Police, we will continue reviewing Anti-Social Behaviour (ASB) signage, maintain proactive stakeholder engagement, and carry out targeted enforcement activity. We will also explore the refurbishment of the Rangers' Hut to serve as a satellite police office, strengthening our on-site presence. This partnership approach will support our ongoing focus on reducing ASB across the site, alongside continued outreach work relating to Violence Against Women and Girls (VAWG).

MANAGEMENT ACTION	STAKE-HOLDER	GREEN FLAG CRITERIA	TIME-SCALE	STATUS 2026
Review signage and wider communications to reduce the incidents of arson.	LBH	W, H, WM, C	O	Working with Fire Brigade we will continue to explore options to install fire hydrants and introduce more measures to mitigate against arson. Look at opportunities to have more static countryside rangers at Hounslow Heath to act as a deterrent through their increased presence on site. Regular fire safety meetings were held through the summer in 2025.
To continue to manage the site to prevent widespread damage caused by summer fires.	GS	H		Hounslow Heath now forms part of the borough wide fire review considering climate change and increased fire risk.
Review Green Waste	GS	H, S	S	Any woodchip generated on site is used on site
Continue to maintain a healthy tree stock with a review of opportunities for new tree planting.	LBH, GS	S, W, WM, BH	M	All tree works are carried out by GS in compliance with UK legislation. New tree planting opportunities to be identified at entrances as part of masterplan implementation.
Develop plans for increasing habitats and the biodiversity of the site.	LBH, GS, SH	BH	S	London Wildlife Trust were commissioned to produce a 10-year habitat and species management plan, with field surveys undertaken throughout Spring, Summer, and Autumn 2024. The resulting Habitat Management Plan was completed in May 2025 and provides detailed guidance for future habitat improvements and species monitoring. This management plan now informs upcoming delivery phases, ensuring that programmed management actions are aligned with ecological priorities and enable long-term, sustainable enhancement of the site. Year 1 habitat works to take place across winters 25/26 and 26/27
Add bird boxes & bat boxes, Bat Surveying, and other site appropriate habitats/surveys	LBH, GS, SH	BH	S	Installation of perching pole for bird 2022. New bat boxes to be installed in 2024.
New wetland bird hide and educational platform	LBH, GS	BH	S	To form part of the masterplan design aspiration work.
Installation of 2 live cameras	LBH, GS	BH	S	Linked to Hounslow Heath website and social media platforms. To form part of the post masterplan implementation aspiration work.

MANAGEMENT ACTION	STAKE-HOLDER	GREEN FLAG CRITERIA	TIME-SCALE	STATUS 2026
Enhanced improvement to rare heathland habitat	GS	O	M	Harvest heather seed from existing mature areas within the Heath in and reseed an area damaged by arson to support regeneration. To form part of the masterplan and associated habitat maintenance programme.
Continue to explore funding opportunities to develop an improved outdoor children's area	LBH, GS, SH	C	M	To be explored as part of masterplan work.
Explore catering options such as café or mobile ice-cream catering	LBH, GS	C, H	M	Forms part of a wider strategy regarding catering provision. A non-static kiosk idea will form part of the masterplan design aspirations to build a business case for a permanent café/community hub space.
Continue and expand the work with volunteers and the wider community. to promote greening activities, support habitats	LBH	C	O	
LBH to continue to facilitate events within Hounslow's parks and open spaces as part of an active community engagement agenda.	LBH	C	O	
LBH to facilitate opportunities for education, culture, and heritage at the site.	LBH, GS, SH	C	S, M	
Continue to publicise the Countryside site through LBH website, social media platforms and notice board. Also, borough wide campaigns, including achievements, initiatives, and announcements.	LBH	Mkt	O	Ongoing
Support other positive promotion of Hounslow Heath through various media platforms.	LBH, GS	Mkt	O	Ongoing

Appendix 2



Annual Maintenance Work Schedules

The following table provides an overview of the annual maintenance work schedules. All frequencies are subject to seasonal variations, resource, and specific horticultural requirements. They are reviewed annually by the Operations Manager at GS to ensure they remain suitable and reflect any significant site changes. See “Meeting the Green Flag Criteria” section for more detailed management information.

Service	Frequency/Management information
GM Summer works (March - October) <i>Amenity grassland cutting</i> <i>Rough grassland cutting</i> <i>Wildflower meadow cutting</i> <i>Hedge & shrub cutting</i>	Managed by the Grounds Maintenance Teams Once every 3 weeks 1-2 cuts per summer season 1-2 cuts per summer season 1 “reduce cut” dependent on horticultural requirements
GM Winter works (October – March) <i>Hedge & shrub cutting</i> <i>Pond clearance</i> <i>Leaf clearance</i>	Managed by the Grounds Maintenance Teams 1 “hard cut” dependent on horticultural requirements As required, dependent upon size and conditions As required, from hard surfaces and grass areas
Cleansing <i>Litter collection & bin emptying</i> <i>Toilet check and clean</i> <i>Non-offensive graffiti removal</i> <i>Offensive graffiti removal</i> <i>Fly tip removal</i>	Managed by the Cleansing Teams [site specific] Daily, including bank holidays. Daily Within 7 days of notification Within 24 hours of notification Within 48 hours of notification
Infrastructure <i>Cleansing (bins, benches, signs etc).</i> <i>Lighting</i> <i>Buildings</i>	Various teams/management As required, based on visual inspections and reports Inspections and repairs managed by Hounslow Highways All H&S checks conducted, electrical, fire, water, etc.
Trees <i>Tree inspections</i> <i>Tree maintenance</i> <i>Tree watering</i> <i>Tree planting</i>	Managed by the Tree Team Annually Based on previous inspections, prioritised by H&S Summer: May – September (for trees under 3 years) Winter: October – March
Countryside Schedule <i>Visitor Centre open and lock up.</i> <i>Site safety checks</i> <i>Conservation management</i> <i>Volunteering sessions</i>	Every day Daily fire checks: BBQs/firebreaks Seasonal dependent on habitat types Frequency dependent on site





Monitoring the Annual Maintenance Work Schedules

Members of the Parks Team conduct site visits to ensure that the work schedules are being adhered to and report issues to GS to resolve where necessary. Customer enquiries relating to maintenance issues are also routinely assessed to ensure they are rectified in a suitable and timely manner.

The Parks team also make use of and refer closely to the guidance provided by Parks for London in their recently updated Green Space Quality Manual. This provides valuable insight and understanding as to “what good looks like” and will help to ensure a consistent approach is taken during routine monitoring.

For more information regarding the tools and approach that will be used for monitoring, please visit the [Parks for London](#) website and download the Parks for London [Green Space Quality Manual](#).





Appendix 3

Habitat Management Plan 2023 & Summary Timetable

AIM	TASKS
1. Maintain and expand areas of heathland type habitat	<ul style="list-style-type: none"> • Monitor heathland expansion by remapping areas every 5 years. • Map all existing bracken stands. • Create an extra 0.2 hectares of heathland per annum until a quality threshold is reached. • Carry out cyclical scrub removal on 10 hectares of Hounslow Heath • Graze approximately 6 hectares of Hounslow Heath known as the “Heather pen” annually with conservation grazing cattle until a required open sward of heather, gorse, broom, and acid grassland is achieved. • Expand grazing areas by creating further fenced enclosures
2. Maintain and expand areas of acid grassland habitat type	<ul style="list-style-type: none"> • Graze approximately 6 hectares of Hounslow Heath known as the “Heather pen” annually with conservation grazing cattle until a required open sward of heather, gorse, broom, and acid grassland is achieved. • Expand grazing areas by creating further fenced enclosures. • Map out all existing acid grassland stands on Hounslow Heath • Monitor acid grassland expansion by remapping areas every 5 years maintain high quality acid grasslands by reactive maintenance to scrub encroachment or invasive species until a quality threshold of 10 percent is reach
3. Reduce and improve areas of semi-natural broadleaved woodland	<ul style="list-style-type: none"> • Map out all existing broadleaved woodland stands on Hounslow Heath • Monitor reduction of semi-natural broadleaved woodland by remapping areas every 5 years • Maintain a scrub control program to eliminate woody species from important heathland, acid grassland and neutral grassland areas. • Inspect tree stock annually and address any health and safety issues that arise. • Maintain an inventory of all veteran trees on site and monitor their status.
4. Improve and expand areas of neutral grassland habitat type	<ul style="list-style-type: none"> • Map all existing neutral grassland on Hounslow Heath • Monitor neutral grassland expansion by remapping areas every 5 years. • Maintain hay cutting on southern meadows on an annual basis in July/August • Winter graze northern meadows with cattle at stocking density of 1 per hectare until sward height of 5 to 10 cm is achieved. • Expand yellow rattle populations. • Monitor species diversity within grazed and hay cut meadows by undertaking phase 2 vegetation surveys every 5 years. • Map cowslip and orchid populations and undertake annual surveys to monitor colony numbers
5. Improve the mosaic of wetland habitats within the fenced area known as the Marsh	<ul style="list-style-type: none"> • Undertake a 50% cut of willow within the marsh every 5 years. • Cut a third of the reed bed every 5 years and remove arising’s to the surrounding banks where they should be left to degrade. • Monitor reed bed expansion by remapping every 5 years
6. Manage populations of invasive species on Hounslow Heath	<ul style="list-style-type: none"> • Ragwort and thistles • Produce an eradication/management plan. • Monitor and remap the areas of invasive species every 5 years
7. Survey and monitor all important fauna and flora populations on Hounslow Heath	<ul style="list-style-type: none"> • Undertake adder monitoring annually by inspection of spring basking sites and periodic inspection of age ranges and gravid females in conjunction with relevant bodies and groups. • Undertake butterfly transect annually using butterfly conservation methodology. • Undertake trapping of Hymenoptera on a bi-annual basis in conjunction with the London Natural History Society. • To update moth species by light trapping annually • Undertake a baseline survey of bat populations using bat recorders in conjunction with the London Bat Group



- Forward all bird records into BTO systems on a regular basis.
- Input all Hounslow Heath records into a Biological Records Database

8. Provide an onsite education and information service on Hounslow Heath

- Update GIGL with all Hounslow Heaths records on an annual basis.
- Liaise with all relevant partner organisations related to the ecology of Hounslow Heath
- Maintain Hounslow Heaths status with relevant regional and local Biodiversity Action Plans. Monitor all BAP species on Hounslow Heath annually.
- Update visitor information on site notice boards.
- Provide an annual events and education programme and link with local schools.
- Allow use of site for research purposes for colleges and universities
- Promote use of site via website and social media

9. Encourage use of Hounslow Heath for informal recreation purposes

- Undertake weekly check of bird hides and undertake any repairs, as necessary.
- Mow the area known as the Fair Field on a regular basis in spring and summer to a short sward.
- Infill ruts and holes in pathways and areas of approved access

Summary annual timetable of habitat works & surveys

MONTH	HABITAT WORK	ECOLOGICAL SURVEYS
January	Reed Bed maintenance	Bird (all year)
February	Railway line heather scrape	
March	Bee Banks	Butterfly Moth
April	Ephemeral ponds Paradise woods heather scrape	Reptile Mammal
May	Main heather scrape	
June	Main heather scrape	
July	Neutral meadows	
August	Neutral meadows	
September	Railway line scrape	
October	Woodland	
November	Woodland and Heather Scrapes	
December	Main heather scrape	

Appendix 4

Biological Information for Hounslow Heath

UK Biodiversity Action Plan Habitats & Species

Habitats

- Lowland Heathland
- Lowland Dry Acid Grassland
- Lowland Meadows
- Lowland Mixed Woodland
- Hedgerows
- Reedbeds

Moths

- Horehound Longhorn *Nemophora fasciella*
- Lackey *Malacosoma Neustria*
- Oak Hook-tip *Drepana binaria*
- Blood-vein *Timandra cornae*
- Shaded Broad-bar *Scotopteryx chenopodiata*.
- Spinach *Eulinthis mellinata*
- Streak *Chesias legatella*
- Dusky Thorn *Ennomos fuscantaria*
- September Thorn *Ennomos erosaria*
- Brindled Beauty *Lycia hirtaria*
- Garden Tiger *Arctia caja*
- Cinnabar *Tyria jacobaeae*
- Small Square-spot *Diarsia rubi*
- Cabbage Moth *Mamestra brassicae*
- Powdered Quaker *Orthosia gracilis*.
- Shoulder-striped Wainscot *Mythimna comma*
- Green-brindled Crescent *Allophyes oxyacanthae*
- Sallow *Xanthia icteritia*
- Dusky-lemon Sallow *Xanthia gilvago*
- Grey Dagger *Acronicta psi*
- Knot Grass *Acronicta rumicis*
- Mouse Moth *Amphipyra tragopoginis*
- Rosy Minor *Mesoligia literosa*
- Ear Moth *Amphipoea oculatea*
- Rosy Rustic *Hydraecia micacea*
- Rustic *Hoplodrina blanda*

Butterflies

- Small Heath *Coenonympha pamphilus*

Beetles

- Stag Beetle *Lucanus cervus*

Spiders

- *Meioneta mollis*

Reptiles and Amphibians

- Common Toad
- Viviparous Lizard
- Grass Snake
- Adder

Birds

- Skylark
- Lesser Redpoll
- Common Linnet
- Reed Bunting
- House Sparrow
- Hedge Accentor
- Common Bullfinch
- Common Starling
- Song Thrush

Mammals

- Water Vole
- Hedgehog
- Noctule
- Soprano Pipistrelle

Species Protected under the Wildlife and Countryside Act 1981

- Smooth Newt
- Common Frog
- Common Toad
- Viviparous Lizard
- Slow Worm
- Grass Snake
- Adder



- Bats



Figure 12 Butterflies at Hounslow Heath: Above - Marbled White, Bottom - Coma



RARE SPECIES

Vascular Plants	Rarity
Yellow Vetch	Nationally Scarce
Sickle Medick	Nationally Scarce
Perennial Flax	Nationally Scarce
Galingale	Nationally Scarce
Autumn Squill	Nationally Scarce
Odonata	Rarity
Club-tailed Dragonfly	Nationally Scarce
Ruddy Darter	Nationally Scarce
Orthoptera	Rarity
Roesel's Bush Cricket	Nationally Scarce
Long Winged Conehead	Nationally Scarce
Hemiptera	Rarity
Legnotus picipes	Nationally Scarce
Spathocera dahlmanni	Nationally Scarce
Bathysolen nubilus	Nationally Scarce
Deraeocoris olivaceus	Nationally Scarce
Systellonotus triguttatus	Nationally Scarce
Lygus pratensis	Nationally Scarce
Asiraca clavicomis	Nationally Scarce
Lepidoptera	Rarity
Nemophora fasciella	Nationally Scarce
Six-belted Clearwing	Nationally Scarce
Sitochroa palealis	Nationally Scarce
Least Carpet	Nationally Scarce
Webb's Wainscot	Nationally Scarce
Calamotropha paludella	Nationally Scarce
Cream bordered Green Pea	Nationally Scarce
Coleoptera	Rarity
Ophonus ardosiacus	Nationally Scarce
Panagaeus bipustulatus	Nationally Scarce
Platyderus ruficollis	Nationally Scarce
Nicrophorus interruptus	Nationally Scarce
Olibrus flavicornis	Red Data Book K
Cassida prasina	Nationally Scarce
Longitarsus dorsalis	Nationally Scarce
Longitarsus parvulus	Nationally Scarce
Mordellistena parvula	Nationally Scarce
Barynotus squamosus	Nationally Scarce

Neliocarus faber	Nationally Scarce
Orthochaetes setiger	Nationally Scarce
Trichosirocalus barnevillei	Nationally Scarce
Diptera	Rarity
Beris clavipes	Nationally Scarce
Chorisops nagatomii	Nationally Scarce
Stratiomys singularior	Nationally Scarce
Stratiomys potamida	Nationally Scarce
Epistrophe euchroma	Red Data Book 3
Cheilosia mutabilis	Red Data Book 3
Neoascia interrupta	Nationally Scarce
Pipizella virens	Nationally Scarce
Volucella inanis	Nationally Scarce
Volucella inflata	Nationally Scarce
Volucella zonaria	Nationally Scarce
Micropeza lateralis	Nationally Scarce
Hymenoptera	Rarity
Omalus violaceus	Nationally Scarce
Philanthus triangulum	Red Data Book 3
Hylaeus comutus	Nationally Scarce
Andrena tibialis	Nationally Scarce
Andrena florea	Red Data Book 3
Andrena trimmerana	Nationally Scarce
Lasioglossum malachurus	Nationally Scarce
Mellita tricincta	Nationally Scarce
Nomada fucata	Nationally Scarce
Nomada lathburiana	Red Data Book 3
Hedychridium coriaceum	Red Data Book 3
Arachnida	Rarity
Philodromus albidus	Nationally Scarce
Zilla diodia	Nationally Scarce
Anelosimus aulicus	Nationally Scarce
Ero aphana	Red Data Book 3
Sydera gracilis	Nationally Scarce
Centromerus incilium	Nationally Scarce
Lepthyphantes insignis	Nationally Scarce
Pardosa agrestis	Nationally Scarce
Zodarion italicum	Nationally Scarce
Zelotes petrensis	Nationally Scarce
Bianor aurocinctus	Nationally Scarce



Appendix 5

Contract Performance & Key Performance Indicators

The London Borough of Hounslow’s Parks team works in close partnership with GS—to deliver and monitor the full range of parks and open-space services across the borough. Lampton Greenspace provides the operational delivery for grounds maintenance, arboriculture, playground inspections, litter control, horticulture, cemetery and allotment management, and countryside services, all in line with the council’s service specification.

Performance of the Parks service is jointly managed through an agreed suite of Key Performance Indicators (KPIs), which are monitored monthly (with some measures being seasonal). These KPIs ensure accountability, drive service quality, and support continuous improvement. They cover outputs such as grounds maintenance standards, tree inspection and management, play area safety inspections, horticultural quality, response times for customer enquiries, and the overall condition and cleanliness of parks and open spaces.

Through this structured performance framework and collaborative approach, the Parks team and Lampton Greenspace work together to maintain high standards, deliver community value, and support Hounslow’s wider environmental and “Greener Borough” objectives.

Please find a link to a recent cabinet performance report, which includes summary performance data for the Parks service [here](#) and examples below.

Lampton Services Hounslow Parks and open spaces - Monthly KPI Report							
Financial Year	2025 / 2026		Date of Completion		12th January 2026		
Reporting Period	P9		Completed By		Liam Moore		
Month	Dec 25						
London Borough Of Hounslow - Client Team				Lampton Services Greenspace - Document Owner and responsible person			
Head of Parks Development	Gaye Galvin <Gaye.Galvin@hounslow.gov.uk>			Head of Greenspace	Liam Moore <Liam.Moore@lamptongroup.co.uk>		
Commissioning and Performance Manager	Jamie Smith <Jamie.Smith@hounslow.gov.uk>						
Project Analyst	Gregory Dando <Gregory.Dando@hounslow.gov.uk>						
Sub Department	KPI	Performance Indicator	Agreed Targets (Annual)	Agreed Targets (Month)	Month Actual	Reported SR Month	RAG Status
AIPP	1.1	Number of Residents on allotment waiting list	700	700	2166	N/A	Pass
AIPP	1.2	% - Allotment Occupancy	90%	90%	94.85%	N/A	Pass
AIPP	1.3	% Visual Playground Visual inspections to be completed weekly	100%	100%	100%	N/A	Pass
AIPP	1.4	Production of operational playground report by a qualified engineer with images	100%	N/A	100%	N/A	Pass
Arboriculture	2.1	% of planned tree inspections to be carried out Quarterley	90%	90%	100%	N/A	Pass
Arboriculture	2.2	Trees to be inspected within 7 days of notification	90%	90%	100%	0	Pass
Arboriculture	2.3	Planned tree works to be completed each quarter	90%	90%	100%	N/A	Pass
Arboriculture	2.4	Tree Emergencies to be responded to within 3 hours of notification	100%	100%	100%	1	Pass
Cemeteries	3.1	% Burial service to be implemented within 7 days of request	100%	100%	100%	N/A	Pass
Cemeteries	3.2	24hr Burial service provided and implemented for religious denominations	100%	100%	100%	N/A	Pass
Cemeteries	3.3	Completed Grounds Maintenance programme	100%	100%	100%	N/A	Pass
Cemeteries	3.4	% Maintenance programme completed for chapels, including cleansing before use	100%	100%	100%	N/A	Pass
Countryside	4.1	Volunteer hours from Community and corporate activities	10,000	833.3	896	N/A	Pass
Countryside	4.2	Education Numbers - Total number of children and adults participating in environmental education	4,500	375	767	N/A	Pass
Grounds Maintenance	5.1	% Fly tips to be removed within 48hrs of notification	90%	90%	98.95%	95	Pass
Grounds Maintenance	5.2	% Abandoned Vehicles to be removed within 7 days of notification	95%	95%	100%	0	Pass
Grounds Maintenance	5.3	Overflowing litterbins and excess litter to be responded to within 48hrs of notification	95%	95%	100%	0	Pass
Grounds Maintenance	5.4	% Graffiti to be removed within 7 days of notification	95%	95%	100%	0	Pass
Grounds Maintenance	5.5	% Offensive graffiti to be obscured within 24hrs and removed within 7 days of notification	100%	100%	100%	0	Pass
Grounds Maintenance	5.6	Total Number of graffiti incidents reported	N/A	N/A	0	0	Pass
Grounds Maintenance	5.7	Defective/Dangerous materials or items to be responded to, repaired or isolated within 4 hours	100%	100%	100%	1	Pass
Grounds Maintenance	5.8	% Planned works completed for grass mowing	100%	100%	N/A	N/A	Pass
HSEQ	6.1	% Service Contracts Implemented as part of FM management	100%	100%	100%	N/A	Pass
HSEQ	6.2	Number of RIDDOR reportable incidents	N/A	N/A	0	N/A	Pass
HSEQ	6.3	Number of H&S incidents reported (Non-Riddor)	N/A	N/A	3	N/A	Pass

Example of monthly KPI report provided by GS





Parks Summary - October 2025

PGID0001 - Volunteer Hours - 1699

Decrease of 496 hours from previous month. Likely as a result of decrease hours of daylight as winter progresses as well as weather and less events taking place in parks



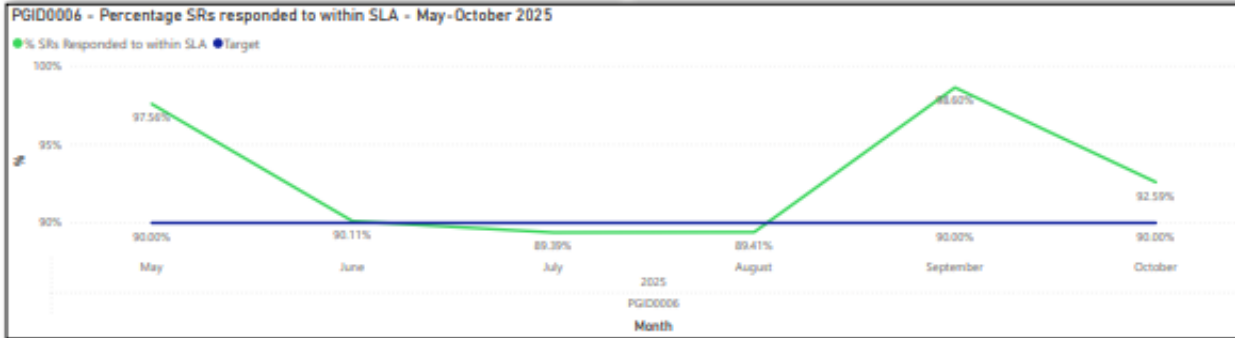
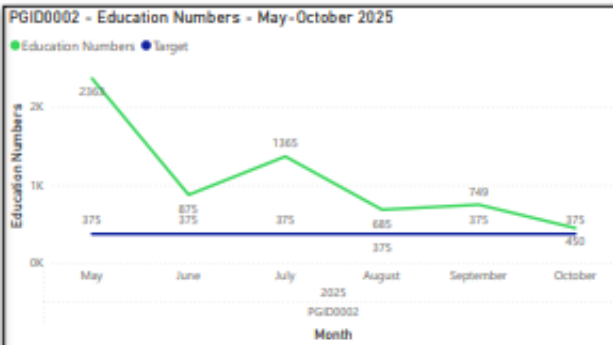
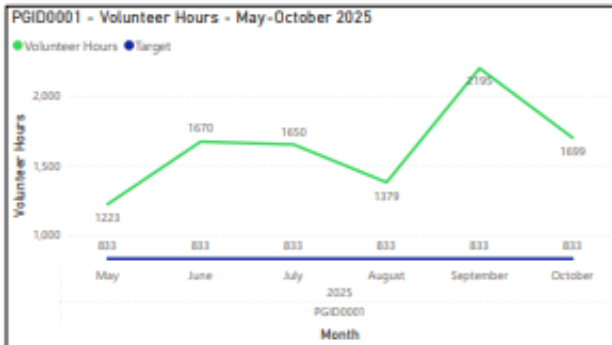
PGID0002 - Education Numbers - 450

Decrease of 299 people receiving environmental education. This is likely to due changes in weather & hours of daylight. As well as October half term holiday, where less school groups are receiving education.



PGID0006 - Percentage SRs responded to within SLA - 92.59%

As we collect more data on this KPI, performance continues to improve. A 2% increase from last month, despite an increase of 32 SRs.



Example of Monthly Performance Cabinet Report - Parks



Appendix 6

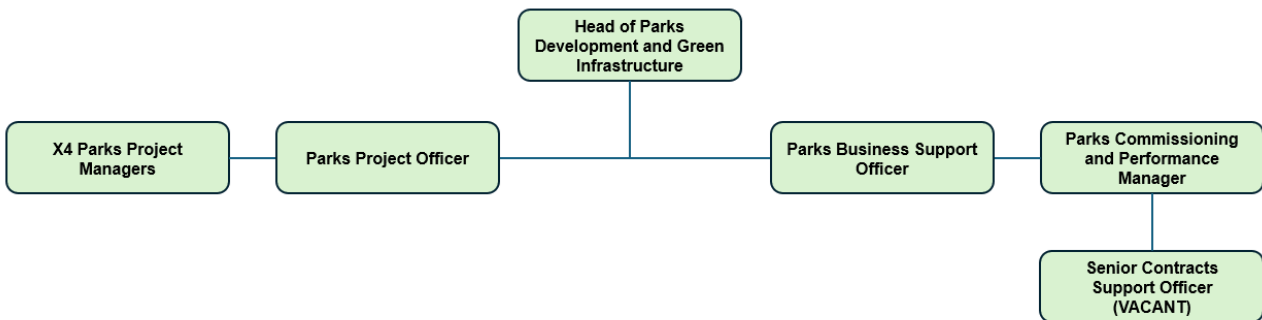


Management Structure & Responsibilities

Hounslow Heath is owned and managed by the LBH and maintained by GS. Information below sets out the management structure and describes the roles and responsibilities of the key personnel involved in managing and maintaining the site.

LBH Parks Service Management Structure

The Environment and Culture Directorate provide the following roles who are responsible for the management, and associated roles, of Hounslow's parks and open spaces:



LBH Head of Parks Development & Green Infrastructure

Senior commissioning role for the management and partnership with GS, senior advisor in relation to parks and open spaces, strategy and policy development, Member's liaison.

LBH Parks Project Managers (x4)

Project development and management, fundraising, community engagement and consultation, implementation, strategy, and policy setting.

Parks Project Officer

Development and delivery of projects, fundraising, community engagement and support Head of Parks.

Commissioning & Performance Manager

Supplier performance governance and relationship management, Legal and contracts, Planning/Commissioning, Operational Service delivery and business processes/systems.

Senior Contracts Support Officer

Supplier performance, customer service and casework, community engagement and consultation, project support.

Parks Business Support Officer

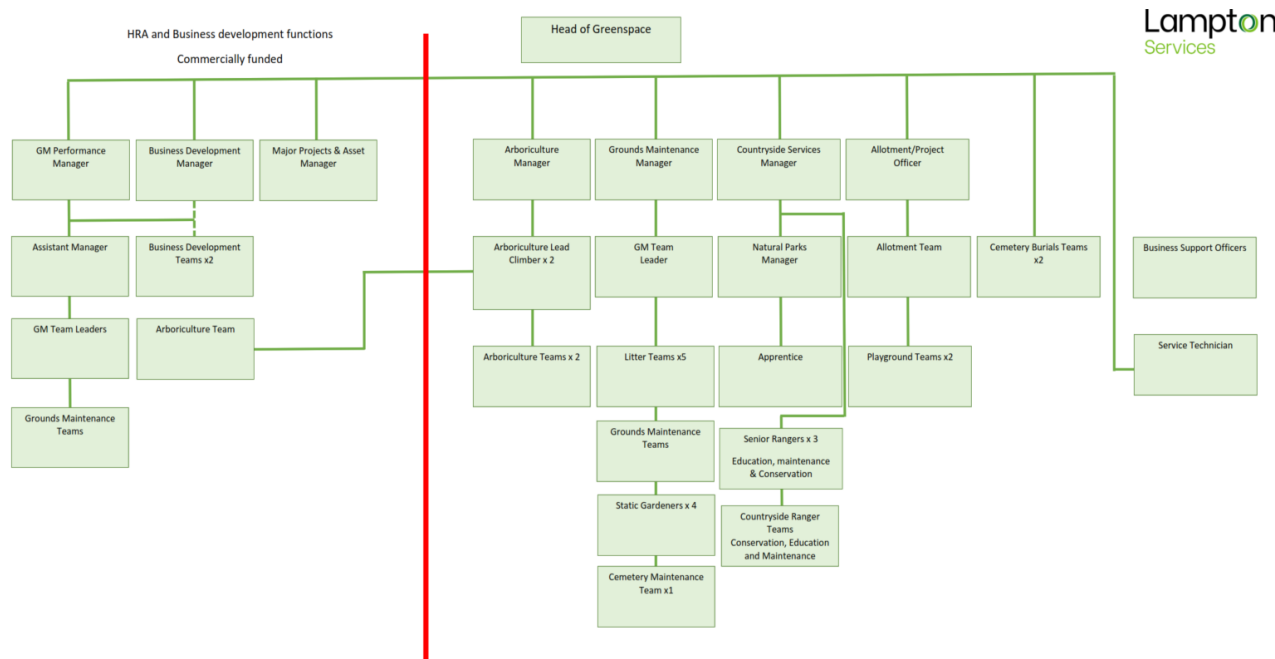
Assistance with finance; administration, project support, lead on Parks communications and web design management.





Lampton Services Greenspace Management Structure

The following GS roles are responsible for the management of Hounslow's parks and open spaces:



Head of Service

Responsible for the ground's maintenance service provision. Oversees the delivery of the specification which includes infrastructure.

Projects Manager including the Allotment Service

Responsible for the development of park infrastructure, management of the allotment service, overseeing horticultural standards, schemes, and developments. Main contact for contractors (CDM). Friends and Member liaison.

Countryside Manager

Responsible for the management of the borough's countryside service. This role includes the management of the Ranger team and educational, animal husbandry, environmental and wildlife operations/programs associated with these locations.

Planned Maintenance Manager

Responsible for the management of the operational resources to deliver the ground maintenance services for the parks and open spaces sites.

Performance and Support Officer

Customer Service functions- Freedom of Information (FOI), customer enquiries, councillors' enquiries, and monthly statistics; technical project support.

Tree Team Manager

Responsible for the teams that carry out the inspections and maintenance of the boroughs 85,000 park trees. Oversees all tree planting schemes for the council and community groups in parks. Managing and mapping/recording of invasive species. Planning application guidance to LBH.





Playground Inspectors x2

Visual, operational, and minor repairs of playgrounds. Inspected annually external contractor.

Operational Teams

Grounds maintenance is delivered using mobile teams. These teams provide the Grass cutting, horticultural tasks, general maintenance, litter bin emptying and litter picking.

Business Support Officer

Provides administration for fleet, handles finances and overtime schedules.





London Borough
of Hounslow

Lampton
Services
Greenspace