

GREEN FLAG MANAGEMENT PLAN 2026

---

# Inwood Park



London Borough  
of Hounslow



Friends of  
Inwood  
Park

Lampton  
Services  
Greenspace



# Foreword

The London Borough of Hounslow has some superb greenspaces that everyone can be proud of. They are places where people can relax, enjoy nature, play, or take part in cultural and historic activities and recreation. They are essential for the health and well-being of our residents, and they are vibrant spaces that provide a borough-wide green infrastructure for our communities.

In Hounslow, we are committed to stimulating a strong and robust green recovery related to our Greener Borough Framework and Climate Emergency. The Council's Green and Blue Infrastructure Strategy plays a major role in delivering the Greener Borough Framework and sets out key priorities for our greenspaces in areas such as health and wellbeing, regeneration, climate change and nature recovery.

The London Borough of Hounslow considers the Green Flag Award process as a tool towards positively developing our greenspaces within this strategic framework and in partnership with our communities. It contributes to providing a vision, with clear objectives and priorities for how the Council and its partners would like to see greenspaces managed in future years.

This plan is not only the commitment from the Council to improve our greenspaces but is an important recognition of the support and commitment of the friends of parks, community groups, local clubs, third sector and partners who share our visions and work with us to respond to our green agenda.

# Acknowledgements

This plan has been produced by the London Borough of Hounslow (LBH) Parks Team and Lampton Services Greenspace\* (GS) with input from the Friends of Inwood Park. In addition, it is important to acknowledge the great contribution from all interested groups for their commitment and dedication in supporting the development, promotion, and management of Inwood Park.

\*Lampton Services Greenspace (GS) is part of the Lampton Limited Group and is a company wholly owned by London Borough of Hounslow with an aim of returning value to the Council representing a bold new ambitious approach





# Contents

<b>Foreword</b> .....	<b>1</b>
Acknowledgements .....	1
Purpose of the Plan .....	3
<b>Where are we now?</b> .....	<b>5</b>
Site Description & Facilities .....	5
Detailed History .....	6
Recent Achievements .....	7
<b>Where do we want to go?</b> .....	<b>10</b>
Green Flag Analysis .....	10
SWOT Analysis .....	11
<b>How do we get there?</b> .....	<b>12</b>
Meeting the Green Flag Award Criteria .....	13
A Welcoming Place .....	14
Healthy, Safe & Secure .....	15
Well Maintained & Clean .....	18
Environmental Sustainability .....	22
Biodiversity & Heritage .....	24
Community Involvement .....	26
Marketing .....	28
<b>How do we know we have arrived?</b> .....	<b>31</b>
Appendix 1 – Action Plan .....	32
Appendix 2 – Ecological Survey 2023 .....	34
Appendix 3 – Annual Maintenance Works Schedule .....	35
Appendix 4 – Contract Performance & Key Indicators .....	37
Appendix 5 – Management Structure & Responsibilities .....	39



# Purpose of the Plan



The Management Plan for Inwood Park has been prepared by LBH and Lampton Services Greenspace with input from the Friends of Inwood Park. The plan is specifically developed for the individual site with a dedicated Green Flag Action Plan.

This plan has been developed following detailed assessment of the Green Flag Award criteria and a comprehensive collaborative review of the existing uses, management, and maintenance of Inwood Park. As part of the development of the plan, detailed consultation has taken place with the GS parks maintenance and management team, LBH officers and Friends groups.

The Management plan is a ‘working document’ that brings together all the information relating to Inwood Park and will be updated, revised, and annually reviewed. This plan has been developed based on the Commission for Architecture and the Built Environment (CABE) Space document “*A Guide to Producing Park and Greenspace Management Plans*” and the “*Green Flag Award Guidance Manual*” guidelines.

## Policy & Strategic Context

Actions and aims within this management plan are both guided by, and relate back, to wider Council strategies. The development of parks and open spaces are a vital component of the Council’s Corporate Plan 2022 – 2026. Our work during this period is focused on six priority ambitions for a borough that is greener, healthier, cleaner, thriving, safer, and liveable. Green infrastructure contributes in many ways to helping us achieve these priorities.

A key approach of Hounslow Council is working under the concept of “One Hounslow” where services are delivered without silos, working for specific outcomes with several internal council departments, community groups, NGOs, and government bodies. Whilst also attracting external investment and developing new partnerships through the Regeneration Service’s Business Case for Growth.

Parks and open spaces play an important role in the approach highlighted in the Council’s Joint Health and Wellbeing Strategy with start, live and age well, preventing ill health, which in turn has an impact on reducing costs within the wider economy, the Council, and the NHS.

The Council’s Equalities and Diversity Strategy 2023, created to improve equality, diversity, and inclusion - sets out an ambitious approach to target policies and funding to the areas which need them most to thrive. The strategy is based on three pillars - Equality by Place, Equality by Group, and Equality as Employer. Hounslow Council has committed to transform the opportunities and life-chances of communities in the borough’s 30 most disadvantaged neighbourhoods.

The Council approved the Greener Borough Framework 2020-30 which seeks to provide a high-level framework to deliver on the Council’s ambition and aspirations for the borough through enhancing our environment and reducing our use of resources. The framework is part of a wider ambitious green agenda bringing different people and organisations together to discover, engage, innovate, and deliver.



The adoption of the Green and Blue Infrastructure Strategy and Nature Recovery Plan are the pillar of the strategic framework for the development of our parks and open spaces and their management plans through the Green Flag Award process.

#### Useful Links:

- [Corporate Plan 2022-26](#)
- [Climate Emergency](#)
- [Green Infrastructure Strategy](#)
- [Greener Borough Framework](#)
- [Nature Recovery Action Plan](#)
- [Equalities, Diversity and Inclusion Strategy](#)
- [Hounslow Joint Health and Wellbeing Strategy 2023-2026](#)
- [Opportunity Hounslow: Our Business Case for Growth](#)

### Parks Funding

The Council's Parks service is funded by a revenue budget for ground maintenance which are provided by our service providers, Lampton Services Greenspace, who maintain Hounslow's parks and open spaces, including allotments, cemeteries, trees, countryside and other workstreams.

In addition to this, the Parks and Open Spaces team sits within the Council's Environment Services directorate focusing on capital investment, contract and performance management, income generation and other initiatives. This is funded through core revenue funding and capitalisation.

Current capital funding has been allocated through a parks improvement programme, active since 2023. This funding covers project delivery and staff resourcing. Other capital funding is obtained via Community Infrastructure Levy (CIL); S106, the Council's Thriving Communities fund (local CIL), [Green Investment Fund](#), and other grants and initiatives. These are applied for annually or as necessary and are based on need and strategic investment required by both the Council and local communities.



# Where are we now?

## Site Description & Facilities

Inwood Park is one of the borough's key parks. It consists of amenity grassland, dispersed with native woodland belts and a small wildlife area set up with deadwood and rough grassland. There are more formal gardens toward the western entrance to the park. The main entrance to Inwood Park is located on Inwood Road. The park borders Inwood Avenue, Livingstone Road and James Street and is in the centre of a large area of residential properties. The park is located a short walk from Hounslow town centre.



### Site Information

**Name:** Inwood Park

**Address:** Inwood Road, Hounslow TW3 2QG

**Contacts:** 020 8583 5555

**Email:** [parks@hounslow.gov.uk](mailto:parks@hounslow.gov.uk)

**Web:** [www.hounslow.gov.uk](http://www.hounslow.gov.uk)

**Designation:** Open Space    **Ownership:** London Borough of Hounslow

**Size:** 5ha

**Byelaws:** Visit the [Park rules and byelaws | London Borough of Hounslow](#) page to download

**Access:** open access at all times

**Transport: Train:** Hounslow Station

**Tube:** Hounslow East

**Buses:** 110/111/H20/H28

**Parking:** Street pay and display parking

**Local Facilities:** Play area, Multi Use Games Area, pitch, woodland edge, seasonal cafe and toilets, All Ability cycle hub, Waterplay.



## Detailed History

Inwood Park was formally meadowland, and the land was acquired by a Mr J F Pownall alongside the Isleworth Brewing Company. Inwood Park was first laid out in 1905 and was the borough's first public park. A meeting Heston & Isleworth UDC in March 1897 had agreed to provide a recreation ground in celebration of the Queen's Jubilee and the site of the new park was one of two suggested.

It was only partly completed at the inauguration, which took place to coincide with a children's fete on 26 June 1902, as a celebration of the coronation of Edward VII, the Jubilee now forgotten. It was planned to call the new park Coronation Park, but this was then decided against when the King became ill and was instead named Hounslow Recreation Ground. The land purchase was not completed until September 1903; by July 1905 it was '*practically completed*' by which time the c.5.5 hectares were divided into two roughly equal portions, laid out by Mr. Abrams, the Parks Superintendent, using unskilled labour.

Historically, the front portion of the park had '*lawns, flower beds, and ornamental walks,*' presenting '*a blaze of colour*' from the large entrance gates on Inwood Road with the park superintendent's house surrounded by flowering beds and borders. Beyond were '*large beds laid out with double carnations, Shirley Poppies, Nasturtiums, Sweet Peas, and Mignonette, with borders of Godetia and Clarkii elegans - some of which present a very striking appearance. In front along the railings, the plants are mostly herbaceous and half-hardy annuals. Under the trees are rustic shelters where old gentlemen read their papers secure from the heat of the sun and nursemaids and tired mothers do their knitting while they keep one eye on the romping children.*' (text taken from the Middlesex Chronicle Jan 1901 and July 1905)

The back portion of the park had a central line of elms under which it was proposed to lay a pathway, with a football ground on the left and cricket pitches on the right, as well as tennis courts. At that time, a piece of ground to the left of the entrance was intended for a children's playground if funds allowed. In the summer of 1905, the park was well used with 400-500 daily visitors and the first band concert by Hounslow Town Band attracted some 1,000 people. However, in 1907, problems with 'vagabonds and loafers' were reported in the local newspaper. By 1933 the park was described as having floral displays, a children's playground, rustic shelters, 6 grass tennis courts, and a football pitch.

A boating lake was installed in the park in the 1940s, in 1992 this was filled in. The island remains and is now the area where the water and sand play area are.



There is a large air raid shelter buried under the park, and vents are still visible in the MUGA section of the play area. The grass tennis courts were transformed into a garden of horticultural excellence in the 1990s, which is still used as an area for the public to relax and reflect. The park still has some of its original railings along the right side of the main entrance and some mature trees.



## Recent Achievements

### Aspirations for 2026

- Exploration of conversion of community café into community hub
- Exploring funding opportunities for path improvements and perimeter pathway
- Boundary improvements around Inwood Park

### Achievements 2025

- Addition of bird and bat boxes
- Woodland works have been completed
- Purple 4 Polio crocus bed developed as part of the End Polio Now Campaign by the Friends of Inwood Park and Hounslow Rotary Club.

### Achievements 2024

- Surface track improvements completed for cycle hub
- Barrier development at cycle hub
- Cycle hub relaunch
- Woodland works have taken place

A new bike track has been created at Inwood Park's Cycling Hub since Autumn 2024. It includes new surfacing, block paving and a barrier between the water splash play area and the cycle track to allow both facilities to operate and exist separately. This new feature will allow for more cycling sessions to be run throughout the year, as well as allow for parents to teach their children how to cycle outside of the sessions.



The Parks team have been working with Friends of Inwood Park, Greenspace and Traffic and Transport to explore the refurbishment of the old café facility and turning it into a community hub/café that could have a cycle workshop attached to it.

Woodland works have taken place in Inwood Park to increase natural surveillance, footfall, activation, and appreciation of ecology. Trees have been cut along the boundary to remove dead and dying trees. Some hazel trees have been coppiced, and some have been stump ground. Reductions have been made to undergrowth and blackthorn. Tree canopy has been raised and ivy educed on some trees.



The park is surrounded by community facilities; The Triangle Centre, who support disabled people in the area. Since Summer 2025, Skylarks have opened their new facility at what was once known as the Hounslow Toy Library. Skylarks are an independent charity that provide support and information for children and young people aged 0 – 25 with additional needs, including their whole families. The park is well used, popular and in previous years has hosted several annual events over the summer months. Such as the Hounslow Concert put on by the Hounslow Music Service as part of the Summer of Culture 2022.

The park has been improved in recent years, most recently with the installation of a trim trail funded by the London Marathon Trust. There has also been an emphasis on increasing sightlines across the park to deter ASB. As part of this woodland copses have been reduced and crown lifted.



The main play area in the park offers play features for toddlers to teenagers and a table tennis table. There is a large pitch area and path through the park.

There is a refurbished toilet block located on-site which is currently limited to use for community events, sporting facilities, and assisted cycling activities. There is also a yard area used by the Site Attendant.

The water play areas has now been renovated and opened in the summer of 2023 which has provided an exciting new facility for residents. A bike track for under 8's and All Ability cycling sessions is under way.

### Achievements 2023

- Water play opened and used during the summer months.
- New signage installed.
- Work underway for cycling track renovation.





### Achievements 2022

- Water play project was delivered, providing new facility for the park.
- Work begun towards cycling track renovation to be completed in 2023.
- Use of the site by Hounslow Town Primary School during a school rebuilding project
- Installation of a Trim Trail funded by the London Marathon Trust
- Award of £100K towards water play and bike track improvements.
- Continued use of the park by Let's Go outside and Learn (see events [here](#))
- Boundary fencing/railing repairs
- Joint Task Force Enforcement to tackle ASB.
- Reduction of woodland copses to increase park site lines.
- Extra funding – received etc. for cycle track improvements and barriers.
- Cycle hub have purchased more adapted bikes.

### Achievements 2021

- Playground equipment repaired.
- Water play project out to tender January 2022
- Green Gym remained active in the park until Autumn 2021

### Achievements 2020

- Installation of CCTV cameras in activities area
- Cease of nighttime locking
- TCV Green Gym active in the park
- Water play project design prepared.
- Use of cycle track by managed inclusive cycling session.
- Gate repairs
- Park Attendants welfare facility power supply upgraded.





# Where do we want to go?

## Green Flag Analysis

The ambition for LBH in partnership with GS and community groups is to continue to work to improve standards and develop parks and opens spaces strategically according to corporate priorities and local needs.

A clear connection between the criteria identified by the Green Flag Award Scheme and the main points gained from the SWOT analysis and site review completed with the Friends of Inwood Park has helped to establish a comprehensive management plan for this site.

The management plan process is described below the section “How do we get there?.”

## Consultation & Co-design

The Council has a strong partnership with the Friends of Inwood Park. Co-designing the future of the park together in most initiatives and opportunities.

Continuous dialogue is in place through regular communication and a quarterly forum where Friends discuss wider issues and learn from each other to improve overall management standards.

LBH works in close partnership with GS with monthly project and development team meetings where the monitoring and progress of these plans are discussed.

LBH engage annually with Friends groups and community groups in compiling these management plan and their progress.

Ward Councillors and the Lead Cabinet Member for Recreation, Public Spaces and Parking are regularly updated on parks development projects and strategies.

Liaison with the Hounslow Met Police and the Councils Enforcement Team on matters around ASB and public safety.





## SWOT Analysis

A SWOT analysis is a management critique to identify Strengths, Weaknesses, Opportunities and Threats to help shape future improvements.

<p><b>STRENGTHS</b></p> <ul style="list-style-type: none"><li>• Play area.</li><li>• Trim Trail</li><li>• Multi Use Games Area</li><li>• Renovated water play</li><li>• CCTV cameras x1</li><li>• Site Attendant</li><li>• Toilet Block</li><li>• Cycle track improvements.</li><li>• Signage</li><li>• Friends group actively supporting the park through planting, activities, and community events.</li><li>• Winter woodland works took place recently therefore more natural surveillance.</li><li>• Good sightlines</li><li>• Accessible paths</li><li>• No Dog Fouling</li><li>• Well maintained</li><li>• Bird and bat box installations</li><li>• Community events</li><li>•</li></ul>	<p><b>WEAKNESSES</b></p> <ul style="list-style-type: none"><li>• Reduced bench provision to prevent ASB.</li><li>• Lack of benches for elderly, disabled and pregnant mothers.</li><li>• Closed cafe facility</li><li>• No path to trim trail</li></ul>
<p><b>OPPORTUNITIES</b></p> <ul style="list-style-type: none"><li>• CCTV</li><li>• Tree planting</li><li>• Wildflower meadows</li><li>• Habitat enhancement/creation</li><li>• Creation of a community hub</li><li>• Creation of a natural bug hotel</li><li>• Recognition of species through interpretation boards</li><li>• Personalization of park through celebration features i.e., memorial for old boating lake.</li><li>• Perimeter walking path</li><li>• More community activities are run by the Friends.</li><li>• Expansion on Nature area</li><li>•</li></ul>	<p><b>THREATS</b></p> <ul style="list-style-type: none"><li>• Anti-social behaviour</li><li>• Climate change/ disease/drought/pests and invasives</li><li>• Vandalism or weather induced activity could affect signage.</li><li>• When water play area is closed could reduce the use of the park and therefore provide the impression it is not working.</li><li>• Damaged paths near to the playground and ornamental garden.</li><li>• Tree roots disrupting path.</li><li>• Lack of finances</li><li>• Old buildings falling into disrepair</li><li>• Paths not accessible in some areas therefore dangerous to use</li></ul>





# How do we get there?

## Vision & Objectives

### Vision for Inwood Park:

“The Friends of Inwood Park, the London Borough of Hounslow and Lampton Services Greenspace will work together to create and maintain an exemplary centre for community involvement and enjoyment which is wildlife friendly, sustainable, resilient to climate change, and safe and accessible to all.”

### Key objectives for Inwood Park are:

- To continue to work closely with the Friends group and users of the facilities so to adequately maintain and improve the facilities.
- To ensure that Inwood Park is a place that is secure, safe to use and is clean and well maintained.
- To ensure that the management of the landscape maintains the heritage character of the park.
- To ensure that the park is promoted and managed to provide a high-quality service for the people using it.
- To continue to encourage and promote community involvement in the management of the park.
- To ensure that the management of the park protects and enhances the biodiversity of the site and borough.
- Provide and improve opportunities for good health and well-being.
- Creating opportunities for connecting green spaces to wildlife and increasing the boroughs ecological resilience and connectivity





## Meeting the Green Flag Award Criteria



### Management of Inwood Park

This sets out guidelines and general principles to be followed in delivering the vision and objectives outlined above.

Management of the open space needs to deliver high standards of maintenance of all aspects of the soft and hard landscaping of Inwood Park within existing revenue budgets and through capital infrastructure funding opportunities.

### Delivery Partners

The Council works proactively with the Friends of Inwood Park in consulting with local people regarding their views of the facilities and any impact that is made on their lives. Continuing this relationship is a very high priority for the management of the open space.

GS are responsible for maintaining all the parks and open spaces within the LBH Parks Service. Maintenance is carried out by the contractors' operatives who have the necessary skills to achieve high and consistent horticultural standards.





## A Welcoming Place

The following management priorities help ensure that Inwood Park continues to be a welcoming place.

### Entrances

GS regularly manage and maintain all site entrances to ensure they remain accessible for all, secure and free from any obstructions. This includes gate and surface maintenance where required, clearance of leaves, and gritting during icy conditions. As a general policy our parks are not locked at night, as there is evidence that this attracts antisocial behaviour.

### Signage

Park signage is kept clean and regularly inspected, any repairs are carried out promptly by GS. Our parks have a variety of signage, including welcome signs at main entrance points, with general site information, community event boards, interpretation signage, and enforcement and warning signage where required. For more information, please refer to the “Marketing Section” below.

### Visibility

Where suitable vegetation is managed by GS to help improve site lines for the personal safety of park users across the site. Lighting in our parks is minimised and only considered along main pathways. This approach is generally supported, as there is evidence that lighting can create a false sense of safety, and in fact can attract antisocial behaviour. This approach is supported by Parks for London, the police, and other organisations, developing strategies to help tackle Violence Against Women and Girls (VAWG).

### Graffiti Removal

As a part of our aim to make the borough safe, green, and clean we are committed to reducing and removing graffiti. The site will be regularly inspected for graffiti. All graffiti will be removed within 7 days of notification, where the graffiti is racist or offensive it will be removed within 24 hours of notification.





## Healthy, Safe & Secure

The following management priorities help ensure that Inwood Park continues to be a healthy, safe, and secure place.

### Health & Wellbeing

We recognise the benefits that our green spaces can make to the health of our residents. We are committed to developing active environments that enhance leisure, sport, physical activity and play opportunities in priority areas.

The Councils [Playing Pitch Strategy](#) (to be updated in 2026), identifies needs for sports facility improvements and sets out priority projects for delivery in partnership with key stakeholders. We work with Council services to ensure that our approach supports the broader Council strategies around health and wellbeing and together with Leisure Services provided by Lampton Leisure, Traffic and Transport, Public Health, Contingency Planning, Community Development team and the local community we aim to deliver these improvements.

#### Useful Links:

- [Hounslow Joint Health and Wellbeing Strategy 2023-2026](#)
- [Data Hub](#)

### Better Points

BetterPoints is an app that rewards residents for getting active. Activities such as walking, cycling, running, and wheeling earn users BetterPoints that can be exchanged for Highstreet vouchers or donated to local charities. You can also earn BetterPoints from attending our Healthy Hounslow services. Find out more [here](#).



### Healthy Hounslow

Healthy Hounslow is a partnership between several organisations supporting people in leading healthier lifestyles; to become more active, eat well and stop smoking. The partners that make up Healthy Hounslow are Hounslow Council, Hounslow, West London Trust, Feltham & Bedfont Primary Care Network, MoreLife, Maximus/BeeZee and Lampton Leisure. The services and support offered by Healthy Hounslow are: Smoking cessation, Health and wellbeing coaching, Healthy weight management, Exercise on referral, Cook and eat sessions, and Community NHS Health Checks.



You can find out all about Healthy Hounslow at our website [www.healthyhounslow.co.uk](http://www.healthyhounslow.co.uk)

### Lampton Leisure

Lampton Wellbeing delivers a wide range of innovative and essential health programmes across the borough to promote physical activity. From exercise referrals and strength-building classes to dementia support and digital fitness hubs, we help people of all ages live healthier, happier lives. We combine expert knowledge in physical activity, evidence-based medicine, and sustainability to create programmes that truly make a difference — empowering individuals, strengthening communities, and building a healthier future for Hounslow.





## Site Safety

All GS staff and contractors play an important role in terms of a visible staff presence. All are uniformed and where necessary will wear highly visible clothing. All works will have been risk assessed to ensure the highest level of public safety.

LBH and GS maintain close oversight and management of all subcontractors and other agencies working within our parks and open spaces, adhering to CDM regulations and relevant license agreements.

## Control of Dogs

Most dog owners act responsibly and keep their pets under control. However, the Council continues to receive comments and complaints from residents regarding the behaviour of some dogs and the actions of a minority of irresponsible dog owners within parks and open spaces.

To address these ongoing concerns, the Council carried out a public consultation during 2025 to gather residents' views on a range of dog control issues. A report summarising the findings from the consultation was presented to Cabinet in late 2025. This resulted in the decision to introduce a dog control Public Space Protection Order (PSPO).

The PSPO includes seven key requirements and restrictions for dog owners and dog walkers. Some of these were previously in place under previous regulations and have now been consolidated in this single, update order.

For more information on the status and findings from the dog PSPO consultation please see the webpage [here](#).

Supported by a borough-wide campaign encouraging dog owners to [Take The Lead](#), the new PSPO will be enforced from 1 March 2026. It sets clearer expectations for dog walkers and gives the Council authority to issue on-the-spot fines to those who don't follow the rules.



Inwood Park welcomes responsible dog owners. The play area, fenced sports areas, waterplay and cycle club area are already dog exclusion zones, and this has been reflected in the PSPO consultation.





## Community Safety

Hounslow Community Safety Partnership (HCSP) is responsible for reducing crime, disorder, and substance misuse in the London Borough of Hounslow. Along with other supporting partners, HCSP brings together key local agencies including:

- London Borough of Hounslow – Safer Communities Team
- Metropolitan Police Service (Hounslow Division)
- Hounslow district of the National Probation Service
- Hounslow NHS Trust
- London Fire and Emergency Planning Authority
- [Community Safety](#)

The Council's Enforcement Team have responsibility for overseeing Community Safety in the boroughs' parks and open spaces. They walk through parks to show presence and work with the Parks Team and GS to target regular occurrences of ASB. Occasionally a joint task force operation including those above is required i.e., rough sleeping, food dumping, drinking and drug misuse.

The Council is introducing a new enforcement team in March 2026. The new team will be focusing on fly-tipping and littering, noise complaints and enforcing Public Space Protection Orders (PSPOs). They will also be engaging with local communities and educating residents on how to dispose of waste and recycling correctly.

The team will be equipped with hand-held devices allowing them to identify, capture, report and respond to issues in real-time and reassure residents that issues are being identified and dealt with.

Investment in new AI technologies and SMART sensors will also be developed to enable fast and targeted responses.



Enforcement officials on a walkabout





The Parks Team has established a Violence Against Women and Girls (VAWG) Steering Group in partnership with the Metropolitan Police. The group meets regularly to review hotspot areas across Hounslow's parks and open spaces that have been identified as priorities within the VAWG agenda. Together, they assess recommendations, explore solutions, and coordinate ongoing projects and work programmes aimed at addressing these issues.

A broad range of stakeholders participate in the group to share current concerns, highlight priority areas, and discuss operational capacity. Representatives include the Met Police VAWG Lead for Hounslow, Police Intelligence Analyst, Parks Team, Safer Communities, Lampton Greenspace Countryside Team, Rough Sleeping Unit, Domestic Violence Reduction Unit, and Gunnersbury Park.

Some of the actions from the steering group have led to:

- Increase police patrol in priority parks
- Community engagement with local residents and thereby increasing natural surveillance
- Removal of hiding spots and management of overgrown vegetation
- Creation of a Safety in Parks poster (in conjunction with the police and their reporting procedures)
- Raising awareness on reporting rough sleeping and supporting rough sleepers to reduce stigma
- Insight and lessons learned sharing
- Deployment of Safer Patrolling officers in Priority parks
- Additionally, they contribute to the WA – BCU (West Area – Borough Command Unit) meetings, which include boroughs of Hounslow, Hillingdon, and Ealing.



## Well Maintained & Clean

The following management priorities are designed to ensure that Inwood Park is clean and well maintained.

### Grass Maintenance

GS employ several different management approaches to maintain grass areas within our parks and open spaces. Generally, grass areas are managed either as amenity grassland, rough grassland, or as wildflower meadow. Within many of our larger parks, the grass is left uncut as part of the annual No Mow May campaign which is also referred to as [Hounslow's Natural Summer](#).





Inwood Park consists mainly of amenity grassland, with some boundary and scrub areas managed as rough grassland. Along the western boundary there are also areas actively managed as wildflower meadow. Further to this, there is also a formal garden lawn area in the northwest of the park, near the entrance from Inwood Road.

### Amenity Grassland

Amenity grassland consists of areas used for general recreation, and formal and informal sports, and can include wide-open spaces or those areas planted with trees and shrubs. These areas are regularly cut during the growing season, to ensure they can continue to be used for recreation throughout the year (see Appendix 3 Annual Maintenance Work Schedule). Grass edges, whether they are against paths, fences or walls will be cut at the same time as the rest of the grass using strimmers in most areas.

### Rough Grassland

Rough grassland consists of areas which are cut less frequently generally 2-3 times a year. These are usually areas which are less accessible to the public and help support beneficial insects and small mammals, as well as protect features such as boundaries, hedges, and ponds.

### Wildflower Meadows

Wildflower meadows are areas which are actively managed and promoted as wildlife areas. They are suitably prepared, sown and protected by GS, to ensure they establish and flourish to help promote pollinators, and to increase the biodiversity within the open space.

As part of the council's commitment to invest in green infrastructure, GS help identify additional areas within our parks and open spaces, which can be managed as wildflower meadow, where suitable and in consultation with Friends groups and other stakeholders.



### Trees

Trees are an incredibly significant feature in the borough's parks and open spaces. They provide a variety of benefits not only to visitors but to the overall environment of an area, creating habitats and providing natural shade. They form an important part of the borough's green infrastructure, and this is reflected within the council's [Green Infrastructure Strategy](#).

### Tree Maintenance

Trees within parks and open spaces are subject to inspection by suitably qualified and experienced GS Arboriculturists. This is to identify and remedy any unacceptable risks to people using the sites, or the removal of trees that are extensively decayed compromising their structural integrity. Tree pruning is only carried out where necessary for risk management purposes or where formative





pruning is necessary; this approach allows Hounslow's parks to retain a natural landscape with well-formed specimens.

Hounslow Council works closely with Friends, Councillors and Lampton Services Greenspace tree team to consider the tree population within Inwood Park to make improvements and ensure that there is continuity in the way that the trees are managed.

### Tree Planting

Between 2020 and 2024 the Council set ambitious tree planting targets, successfully planting over 25,000 new trees and whips in parks and open spaces. This formed one of the main ongoing targets set out in the [Green Infrastructure Strategy](#). Several of these were planted in Inwood Park.

Since 2020, Inwood Park has had 14 trees planted around the site.



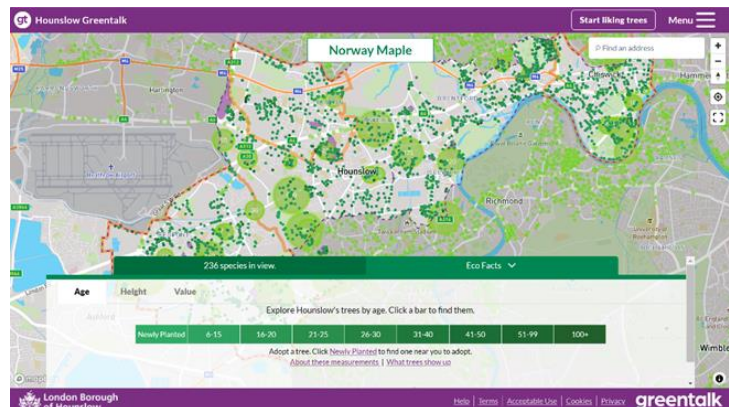
### Greentalk

Hounslow Greentalk is an innovative new platform developed as a bespoke resource for Hounslow residents. It has lots of clever features to help explore public trees and make a positive difference to the environment. The platform provides a unique opportunity for Hounslow residents to adopt newly planted trees and help their borough become greener.

Anyone who wants to find out about trees in the borough can use the Greentalk interactive map to explore their area through a tree focused perspective.

Other features include but not limited to:

- Adopting a tree
- Watering notifications
- Green walks
- Tree giveaways





Over 120,000 trees have been mapped, and around 33,000 can be liked by registered users. Liked trees are saved as favourites and can be accessed through the user profile. The data used to display all the information on Hounslow Greentalk is derived from the council's tree partners who manage the trees in the borough and regularly provide up-to-date information to keep the system as relevant as possible. If a resident is aware of a problem with a tree, Hounslow Greentalk can help them report the exact tree with the right information to the relevant tree partner. For more information, please visit [Hounslow Greentalk](#).

## Wetland Management

### Sustainable Urban Drainage Design

The Parks team work closely with the Flood Risk team, to help inform us on Sustainable Urban Drainage (SUDs) features and design during parks development projects. This approach helps provide ecological and sustainable solutions, to help alleviate flooding within urban areas.

### Ponds & Rivers

There are no areas of open water within Inwood Park.

### Waterplay

The waterplay area has now been renovated and opened in the summer of 2023 which has provided an exciting new facility for residents. The facility is managed by GS to ensure its safe use and maintenance.

### Cleansing

The collection of litter is extremely important in maintaining the appearance of Hounslow's parks and open spaces and has a direct effect upon how people treat and respect the site. Litter is collected and bins emptied daily by the GS cleansing crews. Any occurrences of fly tipping are cleared by GS within 48 hours of notification, and we work closely with the Enforcement Team to investigate fly tipping issues where possible.

### Furniture & Fittings

GS ensure that all furniture is clean and will check benches, noticeboards, and bins on a regular basis. Items will be cleaned when necessary. Any necessary repairs will be reviewed, and funding opportunities explored with the aim of rectification as soon as possible.

### Playgrounds

All playgrounds are visually inspected at a minimum of once per week (based upon site usage), a recorded quarterly operational inspection, and an annual inspection carried out by an independent inspector to ensure the playground meets ROSPA standards. Any hazards identified are dealt with accordingly and where necessary equipment will be cordoned off whilst repairs are scheduled.





## Pathways & Hard Surfaces

Pathways and hard surfaces will be kept clean with litter and leaves removed. Hard surfaces will be maintained in a weed free state. Paths will be kept in a good state of repair and all paths being inspected annually. Any necessary repairs will be reviewed, and funding opportunities explored with the aim of rectification as soon as possible.

## Buildings & Structures

GS manage and maintain most buildings and structures within our parks and open spaces. There are three buildings in Inwood Park. The toilet block which is used for the assisted cycling project, Pavilion café that is not in use and a Welfare/Storage building which is in use.



## Environmental Sustainability

The following management priorities outline how Inwood Park is managed in a sustainable way.

### Litter Recycling

All litter is taken to Transport Avenue, the West London Waste Authority site within Hounslow borough. It is then loaded onto trains and taken to an energy waste site in Avonmouth, where it is used as a renewable energy source.

### Green Waste Recycling

All green waste is either reused or recycled.

- Grass clippings are spread and left in situ in the park.
- Wood chippings are used on flowerbeds to provide a compost and weed control.
- Other green waste (shrub pruning etc.) is taken to Transport Avenue Waste Disposal Site, where it is then transferred by road to a composting facility for processing.

### Pesticides

The use of glyphosate-based herbicides to treat weeds was stopped in 2020, to help promote biodiversity. However, removing the use of herbicides has presented operational challenges, as herbicides have always been considered a cost-effective solution and less labour-intensive results.

Following extensive discussions, it was agreed by Cabinet that glyphosate-based herbicides would be reintroduced for the 2025 season. The reintroduction was necessary due to the increasing prevalence and density of weed growth, the impact of weeds on pathway safety and infrastructure, and the limited effectiveness of manual removal alone.





This decision is due to be reviewed again in 2026.

### Peat Use

GS do not use peat, or any peat-based products within Hounslow's parks and open spaces.

### Infrastructure

GS follow the Council's procurement guidelines when sourcing replacement or new infrastructure items. This includes prioritising products made from recycled and environmentally and sustainably sourced materials wherever possible and financially feasible.

For example, using trees felled onsite for seating and fence work, and sourcing fibreglass heritage litter bins to replace ironwork bins. Products made from tropical hardwood and other unsustainable sources are not used.

### Fuel, Fleet & Power Tools

#### Fleet

As part of an ongoing trial within the Lampton group, the GS fleet use an alternative diesel product, Hydrotreated Vegetable Oil Fuel (HVO). HVO meets OEM fuel specifications and is certified to be a 90% CO2 saving on normal diesel. This efficiency is better than current electric vehicles and is a great stop gap to future technologies given the age of the HGV fleet. It is hoped that a switch to HVO will help GS transition to low carbon technologies in a systematic way, giving time to manage various operational constraints by limiting early adoption of electric vehicles.

#### Power Tools

GS are continuously trialing the use of electric power tools as alternative to 2 stroke machinery. They currently utilise several battery powered trimmers and blowers and continue to evaluate the effectiveness and development of the technology and replacing older traditional machinery as it reaches end of life.





## Biodiversity & Heritage

We manage our parks and open spaces by ensuring that where possible we maintain a diverse range of age, species and structure in the canopy, understory and herb layers and aquatic spaces. This is achieved by:

- Managing site specific habitats such as acid grassland, mature veteran trees, rivers, ponds, and woodlands.
- Supporting the borough's wildlife through interventions such as birds and bat houses, stag beetle loggeries, aquatic ledges and educational signage.
- Enhancing existing aquatic and terrestrial habitats to support a diverse range of flora or fauna.
- Exploring opportunities to create new habitats such as wildflower meadows, native hedge planting, aquatic ledges, and copses. An ecological survey was conducted in 2023, see Appendix 2
- Consider introducing sympathetic mowing regimes where suitable, for example leaving areas of rough grassland around trees.
- Recognising the effects of climate change e.g., drought, wildfires, floods, disease, biosecurity.
- Prioritising sustainability through resilient planting e.g., drought tolerant trees and plant
- In 2021 LBH commissioned a baseline report of invasive species Parks and open spaces portfolio, surveying 195 sites. This information was used to procure a specialist contractor to remove targeted species over a five-year period beginning in April 2025 and running for 5 years. This will seek to eradicate: Japanese Knotweed, Giant Hogweed, and floating Pennywort, and provide advice on how to deal with Himalayan balsam. The initial round of treatment has been very successful, and we have already seen a reduction in the size and viability of INNS patches.
- Biosecurity – Anyone responsible for plant supplies must ensure that all plants and associated soil are supplied free of pest and disease at all points in the supply chain. To achieve this, GS consider the latency period and life cycles of all pests and diseases. Special attention to biosecurity is given to imported stock.
- GS procurement will always prioritise suppliers that are able to demonstrate a supply chain audit trail (for example, are part of a recognised Plant Health Assurance scheme) that ensures plant material sourced within the UK is under a regime of biosecurity-aware production and follow nationally agreed good practice guidelines.
- The Nature Recovery Action Plan (NRAP) is a part of Hounslow's Greener Borough Framework and was adopted in 2023. A stakeholder board -Nature Recovery Stakeholder Board (NRSB) was launched in February 2024 and is led by the Head of Service with quarterly meetings held in various locations across the borough.
- Site of Importance for Nature Conservation (SINCs)  
During 2025 LBH identified the need to review the current ecological status of its 47 Sites of Importance for Nature Conservation (SINC) as part of the actions set out in the Nature Recovery Action Plan (NRAP 2023–2028).





Although these sites have been assessed in the past, with the most recent assessments carried out in 2012, little information exists about their current condition from which to highlight opportunities to protect and enhance biodiversity value.

Therefore, an ecological appraisal of all 47 individual SINC across the borough was commissioned to establish an updated baseline of habitat types at each site, and their condition. This was conducted by Ecosulis, in the form of a Preliminary Ecological Appraisal (PEA) comprising of the following:

- Desk-based review of existing ecological information provided by LBH and local record centre data, alongside open-source datasets, to identify any legally protected or notable species, and/or habitats that may be present; and
- A field survey to determine current habitat types present on the Site, using the latest UK Habitat Classification (UKHab) methodology and incorporating an assessment of habitat condition; and
- Preparation of a concise report summarising the findings of the desk study and field survey, and details of conclusion and recommendations.

The purpose of the PEA is to identify early opportunities for enhancement to improve biodiversity value at each site, and, where possible, highlight protected and notable species or habitats which may benefit from or be negatively impacted by habitat interventions at the Site. We anticipate all PEAs on Council land will be available to view via the Council's website by early summer 2026.



*Methods used by Ecosulis whilst surveying sites*





## Community Involvement

Parks and open spaces foster community cohesion by serving as venues for events, volunteering, and shared activities. Involving residents in the management and decision-making processes of parks ensures that these spaces reflect community needs and values, encourages a sense of ownership, and strengthens stewardship. Active participation not only improves the sustainability and relevance of green spaces but also builds stronger, more engaged communities.

### Friends Groups

The Council works closely with Friends of Inwood Park and encourages them in their efforts to apply for grants and to organise volunteer days and events. We also engage with other community groups and third parties to encourage and ensure opportunities for the needs and requirements of a diverse borough population.

The Parks Team provide support for applications to the Council's Thriving Communities Fund. More information about the scheme can be found on the Council webpages [here](#).

The Hounslow Friends of Parks Forum holds quarterly meetings and act as a support network that provides networking opportunities for local groups. The forums are facilitated by [Habitats & Heritage](#) who are a west London based organisation who help support new and established Friends Groups.

The Parks team engage with people from a wide range of backgrounds to increase representation and improve access to our green spaces, while also supporting placemaking and a stronger sense of belonging through engagement. This has included working with groups such as the Care Leavers team, the Youth Council, refugees and asylum seekers, Duke of Edinburgh students, faith groups, attending careers fairs at West Thames College, and collaborating with EDI networks and local educational institutions.

### Friends of Inwood Park

The Friends of Inwood Park are a voluntary organisation led by residents to help with new initiatives and the day-to-day management of the park. They are currently in a transitional period as new leadership comes into the group and are exploring options to help make use of the cafe and other facilities within the park. [Home - Friends of Inwood Park](#)

#### Achievements:

- More people using the park daily.
- 2 new wildflower meadows.
- Football / cricket practice taking place at weekends.
- Site Attendant Simon continuously working hard to maintain a clean and inviting park.
- Planting and looking after the flora to encourage more fauna.





- Friends group hosting activities.
- Community events such as easter party, easter egg hunt for young children, volunteer days for weeding, litter picks, and planting bulbs and plants.
- Community Grant by ward Councillor allowed for the installation by Lampton Greenspace of 10 diamond bird boxes, 10 ordinary bird boxes, 1 kestrel nest box, 6 wren pockets, 3 bat boxes and 2 insect hotels.
- All ability cycle track and water splash park both well used during the warmer months.
- Worked with the Hounslow Rotary Club to celebrate the Global Purple For Polio Campaign, planting 3000 purple crocus bulbs.

### Friends Aspirations:

- Community activities are run by the friends group.
- Encourage more community groups, schools etc. to use the park.
- Improve the dog park, make it a more interesting area for the dogs, i.e., an agility course.
- Plant native plants in landscaping to support local biodiversity.
- Reinstate Ornamental Gardens near the main entrance.
- Use social media and the new Friends website to promote the park.
- See the pavilion repaired for the good of local residents i.e., parents, children, and older residents.
- Continue having a Site Attendant.

### Volunteering

The Council and GS work with the public to inform, educate, and volunteer in managing habitats through event opportunities and specific projects such as school planting in green spaces, green gyms, tree planting, and habitat surveying. Community involvement and engagement in nature conservation projects helps to increase the health and wellbeing of our residents.

The GS Countryside Team help manage and coordinate several volunteer groups across the borough. More information can be found on the Parks Hub webpages [here](#).

In September 2024, the Council awarded London National Park City funds from its Thriving Communities Fund to establish a 'ranger' network in the borough. These rangers have the ability to apply for the small grants programme, allowing them up to £1000 of immediate funding to run localised projects. They also join a network of other rangers in educating, supporting, and influencing nature-positive behaviour especially in young residents. Examples of these projects include [Heron Way wildflower planting](#), [Heston Pocket Gardens](#), [Poetry in the Park](#) and [Accessibility to Nature](#), all of which can be found on the LNPC [website](#).





## Marketing

Promotion and marketing of Inwood Park is carried out by a range of measures to ensure that local people and visitors to the borough are aware of the facility.

### Entrance Signage

The design principles of our recent signage refresh encourage greater user engagement in exercise and outdoor activity by using pictograms and maps to illustrate the facilities available in the park and the surrounding area. It promotes the unique character of each park and its association with the community and presents a consistent London Borough of Hounslow parks identity.



### Onsite Promotion

To promote events and activities in our parks, weatherproof posters and banners are used to display up and coming events and activities across the site and promotional materials are shared with local community groups. Noticeboards are also used by the Council and local communities to share upcoming events and activities as they are accessible for all.

### Web & Press

The Council's website has a dedicated Parks and Open Spaces section which can be found [here](#). You can find general information about the service, with useful links, advice, and reporting channels for customers to use.

### Parks Hub

The Consultation and Engagement platform Let's Talk Hounslow has a new dedicated Parks Hub which includes current consultations, surveys, and live projects, as well as a digital noticeboard. Since the launch in February 2024, the site has had over 27,800 visitors to the homepage. To view the hub, visit [here](#).



#### Let's Talk: Parks and Open Spaces

Hounslow Council is bringing nature and green spaces closer to you. As one of London's greenest boroughs, Hounslow's parks are essential for wellbeing and conservation. This hub allows residents to share feedback on consultations, improvements, and projects about our parks and open spaces.

Our Parks team, alongside Lampton Services Greenspace, manage over 160 open spaces, including 79 allotment sites, 9 cemeteries, and 4 churchyards. Working with Friends Of groups and charities, we ensure our parks remain vibrant spaces for relaxation, play, and community activities. Click below to learn more.

[Learn more](#)





Hounslow also has several other websites which are designed to engage with the wider community about our services and the opportunities available in Hounslow.

- Find out what's on [InHounslow](#)
- [Hounslow Nature Network](#) is a new resource bank to connect you with local environmental organisations across London
- A dedicated [Nature and Greenspaces](#) section on Hounslow Connect, the go to platform for local activities, advice, guidance, and support in Hounslow
- Promotion through Go Parks London- <https://www.goparks.london/boroughs/hounslow>



Welcome to the first London National Park City Mini-Guide for Hounslow, celebrating Hounslow's great outdoors. Use it to find places to explore, play, or simply sit; groups to join and paths to walk; activities on land or water to try. Get there on foot, by bicycle or public transport.

The Council also has an active social media presence on [Facebook](#) and [X](#) with the handle @LBofHounslow.

To create community awareness for all its facilities the Council regularly produces articles and press releases about activities and facility development. The Council publishes a regular newsletter, Hounslow Matters, which is provided to all residents and includes news and information about our services, including parks and open spaces. To download the latest publication please follow the link [here](#).

Lampton Greenspace is a part of the Lampton Services Group who have their own social media platforms.

- <https://www.lampton-services.co.uk>
- X- @TheLamptonGroup
- Facebook- [lampton-services](#)
- Linked In- [Lampton Services](#)
- Instagram- [@lamptongroup](#)

### Events

The Council encourages the hire of parks to appropriate organisations for commercial and community events. Events are held in accordance with the Parks and Open Spaces Events Policy found on the council webpages [here](#).

### Upcoming in 2026

The Events team are currently planning events and activities for the upcoming year. Events Calendar is available to view on the LBH website- [What's On | InHounslow](#)





2025 – see Friends of Inwood Park section above

2023

The Friends held a successful Macmillan coffee morning and other various events.





# How do we know we have arrived?

## Monitoring & Review

This management plan has been designed as a live document that will guide development in Inwood Park over the next five years. Progress will be subject to monitoring and review to measure success and delivery of aims.

LBH Parks Officers work closely with GS and the Friends group to monitor progress and discuss future plans. This includes:

- Performance against the requirements of the Management Plan
- Provision and analysis of infrastructure surveys
- Provision and analysis of asset surveys
- Monthly project meetings
- Quarterly Friends Forum
- KPI's and performance monitoring (see Appendix 4)

An annual SWOT analysis will be carried out by all stakeholders and, together with the information gathered from all the monitoring methods will be recorded and fed into annually updated management plans.

GFA Judges Feedback and award outcome will enable continuous learning, development and improvement by all partners involved in the award process.

## Action Planning

Our action plan for Inwood Park is provided in Appendix 1. This plan is based on an evaluation of the SWOT analysis together with other projects and plans raised by the Friends group. The action plan lists actions and categorises based on timescales and the Green Flag award criteria. The plan will also allocate ownership for each task to the key stakeholders.





# Appendix 1

## Inwood Park | Green Flag Award | Action Plan Updated 2026

### Key to Action Plan

#### Green Flag Award Criteria

W	Welcoming Place
H	Healthy, Safe and Secure
VM	Well Maintained and Clean
S	Sustainability
BH	Biodiversity and Heritage
C	Community
Mkt	Marketing
Mgt	Management

#### Stakeholders

LBH	Parks Service Management Team
GS	Lampton Greenspace
FoIP	Friends of Inwood Park

#### Delivery Timescales

S	Short term (less than 1 year)
M	Medium term (1 to 3 years)
L	Long term (3+ years)
O	Ongoing

MANAGEMENT ACTION	STAKE-HOLDER	GREEN FLAG CRITERIA	TIME-SCALE	STATUS 2026
Review of all infrastructure	LBH	W, H, WM	S	Infrastructure plan to be prepared for 2022/23
Review of closed buildings	LBH, FoIP	BH, W, C	L	Looking into the development of the community café into a Community Hub with Friends of Inwood Park, which will incorporate a workshop for cycle hub.
Review parks signage	LBH	W, S	M	New signage installed. COMPLETED
Recommission and upgrade the waterplay facility and surrounding landscape	LBH, GS	W, H, WM, S, C	S	Project successfully delivered in 2022. Water play facility seasonally operating – recommissioned in Spring/Summer, decommissioned Autumn/Winter. COMPLETED
Improved surface around old boating lake for juniors and all ability cycle track	LBH	W, H, WM, S, C	S	Project successfully delivered in 2024. COMPLETED
Continue to work with LBH Road Safety team to deliver All Ability bike sessions on the track	LBH	W, H, WM, S, C	O	On-going
Continue to consult and engage with the local community	LBH, GS, FoIP	C	O	Ongoing



MANAGEMENT ACTION	STAKE-HOLDER	GREEN FLAG CRITERIA	TIME-SCALE	STATUS 2026
Continue to work with the Friends of Inwood Park. Continue to provide support to other Community Volunteers/Services to promote greening activities	LBH	C	O	Ongoing. Friend Group active and engaging park users. They have developed a walking group – Woof Pack since COVID.
Continue to consult and engage with the local community	LBH, GS, FoIP	C	O	Ongoing
LBH to facilitate opportunities for Education and Heritage at the site	LBH, GS, FoIP	C	O	Support Hounslow Town School use the park for sports days
Support Fitness activities in the park with promotion of the new fitness trail facility	LBH, GS	O	L	Increased positive use of the park
Continue to publicise the park through LBH website, social media platforms, and noticeboard. Also, borough wide campaigns, including achievements, initiatives, and announcements.	LBH, FoIP	C, Mkt	O	Ongoing
Support other positive promotion of the park through various media platforms.	LBH, GS	Mkt	O	Ongoing
The management plan to be reviewed annually and the action plan to be updated annually	LBH, GS	Mgt	O	Ongoing
Work with the Friends of Inwood Park and other community groups to advertise and link in community events.	LBH, FoIP	C, BH, W, M	O	Ongoing
Enhance the current nature area with interpretation, biodiversity enhancements and boundary treatment	LBH, GS	BH	L	Requires funding.
Improve current paths and areas which lack accessibility by the development of all-weather pathways.	LBH, GS	C, H	L	Required funding

# Appendix 2



## Ecological Survey 2023

The major features include a play area for toddlers and older children, a water play area (spring/summer), table tennis, pitches, mowed grassland, pathways, and tree lines. The park holds community events and offers all-ability cycle training facilities.



Figure: Red boundary depicts Inwood Park.

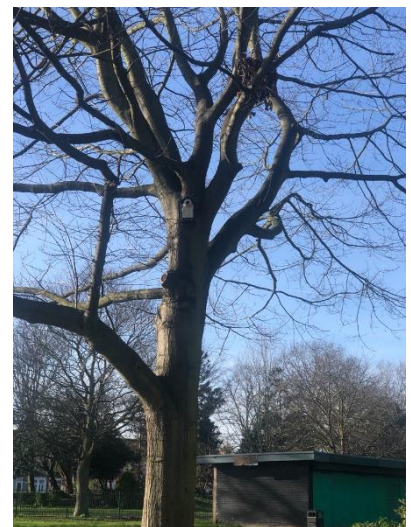
Inwood Park is an urban family park, and on its western edge has wildflower meadows, shrubberies, and scattered tree lines along its eastern boundary. Common knapweed—a firm favourite of pollinating insects, as being a source of excellent quality nectar and oxeye daisy were seen at the site during the site visit.

Tall hedgerows along the boundaries and tree lines – oaks, ash, wild cherry, silver birch, hazel, and sycamore, provide good foraging opportunities for birds and bats. No other birds besides pigeon and grey squirrel were seen during the site visit. Butterflies like holly blue, speckled wood, painted lady has been recorded in the past at this park.

Minor changes as to how to manage these urban parks could create habitats for wildlife and nature corridors that connect existing habitats. This allows species to move between habitats, maintain or increase populations and be resilient to climate change.

### Considerations

- Using native trees when planting
- Leaving dead wood safely in place in woodlands to provide additional habitat for invertebrates.
- Maintenance and monitoring of trees to give them the best chance of survival.
- Reducing the use of herbicides, pesticides which can otherwise kill butterflies and bees and other invertebrates.
- Implementing measures to prevent the spread of invasive species and diseased plants.
- Installation of bat and bird boxes
- Placement of log piles, artificial hibernacula, and bug hotels for habitats for stag beetles, invertebrates, reptiles, and amphibians.





# Appendix 3

## Annual Maintenance Work Schedules

The following table provides an overview of the annual maintenance work schedules. All frequencies are subject to seasonal variations, resource, and specific horticultural requirements. They are reviewed annually by the Operations Manager at GS to ensure they remain suitable and reflect any significant site changes. See “Meeting the Green Flag Criteria” section for more detailed management information.

<b>Service</b>	<b>Frequency/Management information</b>
<b>GM Summer works (March - October)</b> <i>Amenity grassland cutting</i> <i>Rough grassland cutting</i> <i>Wildflower meadow cutting</i> <i>Hedge &amp; shrub cutting</i>	<b>Managed by the Grounds Maintenance Teams</b> Once every 3 weeks 1-2 cuts per summer season 1-2 cuts per summer season 1 “reduce cut” dependent on horticultural requirements
<b>GM Winter works (October – March)</b> <i>Hedge &amp; shrub cutting</i> <i>Pond clearance</i> <i>Leaf clearance</i>	<b>Managed by the Grounds Maintenance Teams</b> 1 “hard cut” dependent on horticultural requirements As required, dependent upon size and conditions As required, from hard surfaces and grass areas
<b>Cleansing</b> <i>Litter collection &amp; bin emptying</i> <i>Non-offensive graffiti removal</i> <i>Offensive graffiti removal</i> <i>Fly tip removal</i>	<b>Managed by the Cleansing Teams</b> <b>[site specific]</b> Daily, including bank holidays Within 7 days of notification Within 24 hours of notification Within 48 hours of notification
<b>Playgrounds</b> <i>Safety inspections</i>	<b>Managed by the Playground Inspectors</b> 1 visual inspection per week minimum (based upon site usage), quarterly “operational” inspections, recorded, annual independent inspections by the Royal Soc. for the Protection of Accidents (ROSPA), recorded.
<b>Infrastructure</b> <i>Cleansing (bins, benches, signs etc).</i> <i>Lighting</i> <i>Buildings</i>	<b>Various teams/management</b> As required, based on visual inspections and reports Inspections and repairs managed by Hounslow Highways All H&S checks conducted, electrical, fire, water, etc.
<b>Trees</b> <i>Tree inspections</i> <i>Tree maintenance</i> <i>Tree watering</i> <i>Tree planting</i>	<b>Managed by the Tree Team</b> Annually Based on previous inspections, prioritised by H&S Summer: May – September (for trees under 3 years) Winter: October – March
<b>Site Specific Features &amp; Services</b> <i>Site Attendant</i>	Daily general cleansing and horticultural tasks and to report issues when found





## Monitoring the Annual Maintenance Work Schedules

Members of the Parks Team conduct site visits to ensure that the work schedules are being adhered to and report issues to GS to resolve where necessary. Customer enquiries relating to maintenance issues are also routinely assessed to ensure they are rectified in a suitable and timely manner.

The Parks team also make use of and refer closely to the guidance provided by Parks for London in their recently updated Green Space Quality Manual. This provides valuable insight and understanding as to “what good looks like” and will help to ensure a consistent approach is taken during routine monitoring.

For more information regarding the tools and approach that will be used for monitoring, please visit the [Parks for London](#) website and download the Parks for London [Green Space Quality Manual](#).



# Appendix 4

## Contract Performance & Key Performance Indicators

The London Borough of Hounslow's Parks team works in close partnership with GS—to deliver and monitor the full range of parks and open-space services across the borough. Lampton Greenspace provides the operational delivery for grounds maintenance, arboriculture, playground inspections, litter control, horticulture, cemetery and allotment management, and countryside services, all in line with the council's service specification.

Performance of the Parks service is jointly managed through an agreed suite of Key Performance Indicators (KPIs), which are monitored monthly (with some measures being seasonal). These KPIs ensure accountability, drive service quality, and support continuous improvement. They cover outputs such as grounds maintenance standards, tree inspection and management, play area safety inspections, horticultural quality, response times for customer enquiries, and the overall condition and cleanliness of parks and open spaces.

Through this structured performance framework and collaborative approach, the Parks team, and Lampton Greenspace work together to maintain high standards, deliver community value, and support Hounslow's wider environmental and "Greener Borough" objectives.

Please find a link to a recent cabinet performance report, which includes summary performance data for the Parks service [here](#) and examples below.

Sub Department		KPI	Performance Indicator	Agreed Targets (Annual)	Agreed Targets (Month)	Month Actual	Reported SR Month	RAG Status
AIPP	1.1		Number of Residents on allotment waiting list	700	700	2166	N/A	Pass
AIPP	1.2		% - Allotment Occupancy	90%	90%	94.85%	N/A	Pass
AIPP	1.3		% Visual Playground Visual Inspections to be completed weekly	100%	100%	100%	N/A	Pass
AIPP	1.4		Production of operational playground report by a qualified engineer with images	100%	N/A	100%	N/A	Pass
Arboriculture	2.1		% of planned tree inspections to be carried out Quarterly	90%	90%	100%	N/A	Pass
Arboriculture	2.2		Trees to be inspected within 7 days of notification	90%	90%	100%	0	Pass
Arboriculture	2.3		Planned tree works to be completed each quarter	90%	90%	100%	N/A	Pass
Arboriculture	2.4		Tree Emergencies to be responded to within 3 hours of notification	100%	100%	100%	1	Pass
Cemeteries	3.1		% Burial service to be implemented within 7 days of request	100%	100%	100%	N/A	Pass
Cemeteries	3.2		24hr Burial service provided and implemented for religious denominations	100%	100%	100%	N/A	Pass
Cemeteries	3.3		Completed Grounds Maintenance programme	100%	100%	100%	N/A	Pass
Cemeteries	3.4		% Maintenance programme completed for chapels, including cleansing before use	100%	100%	100%	N/A	Pass
Countryside	4.1		Volunteer hours from Community and corporate activities	10,000	833.3	896	N/A	Pass
Countryside	4.2		Education Numbers - Total number of children and adults participating in environmental education	4,500	375	767	N/A	Pass
Grounds Maintenance	5.1		% Fly tips to be removed within 48hrs of notification	90%	90%	98.95%	95	Pass
Grounds Maintenance	5.2		% Abandoned Vehicles to be removed within 7 days of notification	95%	95%	100%	0	Pass
Grounds Maintenance	5.3		Overflowing litterbins and excess litter to be responded to within 48hrs of notification	95%	95%	100%	0	Pass
Grounds Maintenance	5.4		% Graffiti to be removed within 7 days of notification	95%	95%	100%	0	Pass
Grounds Maintenance	5.5		% Offensive graffiti to be obscured within 24hrs and removed within 7 days of notification	100%	100%	100%	0	Pass
Grounds Maintenance	5.6		Total Number of graffiti incidents reported	N/A	N/A	0	0	Pass
Grounds Maintenance	5.7		Defective/Dangerous materials or items to be responded to, repaired or isolated within 4 hours	100%	100%	100%	1	Pass
Grounds Maintenance	5.8		% Planned works completed for grass mowing	100%	100%	N/A	N/A	Pass
HSEQ	6.1		% Service Contracts Implemented as part of FM management	100%	100%	100%	N/A	Pass
HSEQ	6.2		Number of RIDDOR reportable incidents	N/A	N/A	0	N/A	Pass
HSEQ	6.3		Number of H&S incidents reported (Non-Riddor)	N/A	N/A	3	N/A	Pass

Example of monthly KPI report provided by GS



# Parks Summary - October 2025

**PGID0001 - Volunteer Hours - 1699**

Decrease of 496 hours from previous month. Likely as a result of decrease hours of daylight as winter progresses as well as weather and less events taking place in parks



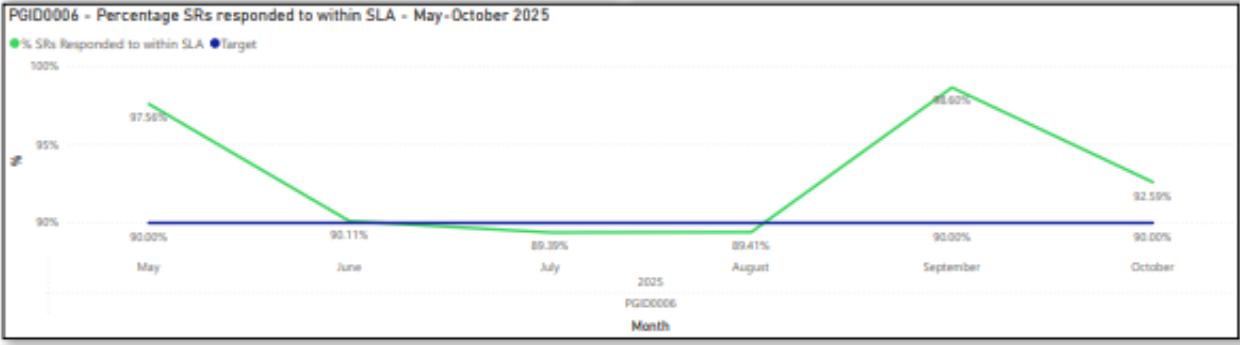
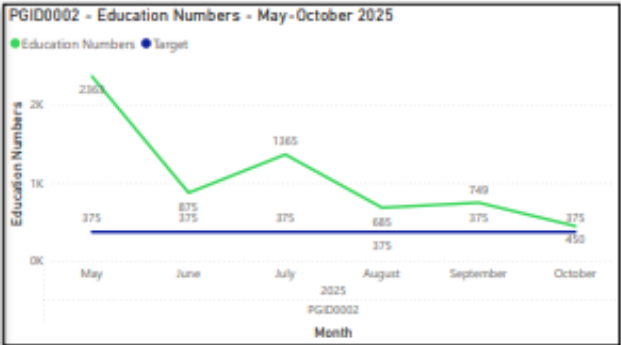
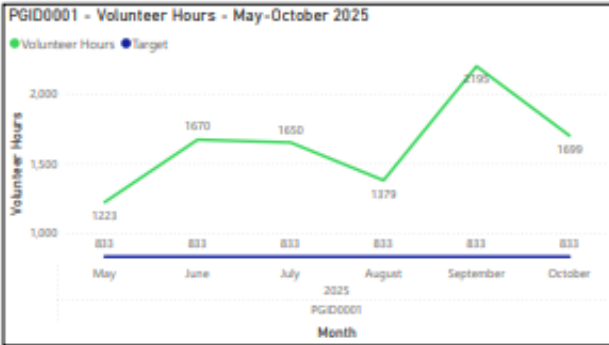
**PGID0002 - Education Numbers - 450**

Decrease of 299 people receiving environmental education. This is likely to due changes in weather & hours of daylight. As well as October half term holiday, where less school groups are receiving education.



**PGID0006 - Percentage SRs responded to within SLA - 92.59%**

As we collect more data on this KPI, performance continues to improve. A 2% increase from last month, despite an increase of 32 SRs.



Example of Monthly Performance Cabinet Report - Parks



# Appendix 5

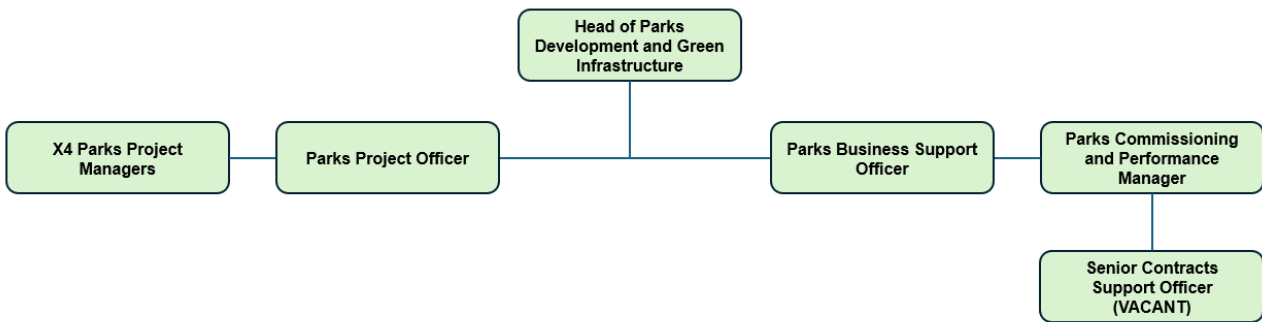


## Management Structure & Responsibilities

Inwood Park is owned and managed by the LBH and maintained by the GS. Information below sets out the management structure and describes the roles and responsibilities of the key personnel involved in managing and maintaining the site.

## LBH Parks Service Management Structure

The Environment and Culture Directorate provide the following roles who are responsible for the management, and associated roles, of Hounslow's parks and open spaces:



### LBH Head of Parks Development & Green Infrastructure

Senior commissioning role for the management and partnership with GS, senior advisor in relation to parks and open spaces, strategy and policy development, Member's liaison.

### LBH Parks Project Managers (x4)

Project development and management, fundraising, community engagement and consultation, implementation, strategy, and policy setting.

### Parks Project Officer

Development and delivery of projects, fundraising, community engagement and support Head of Parks.

### Commissioning & Performance Manager

Supplier performance governance and relationship management, Legal and contracts, Planning/Commissioning, Operational Service delivery and business processes/systems.

### Senior Contracts Support Officer

Supplier performance, customer service and casework, community engagement and consultation, project support.

### Parks Business Support Officer

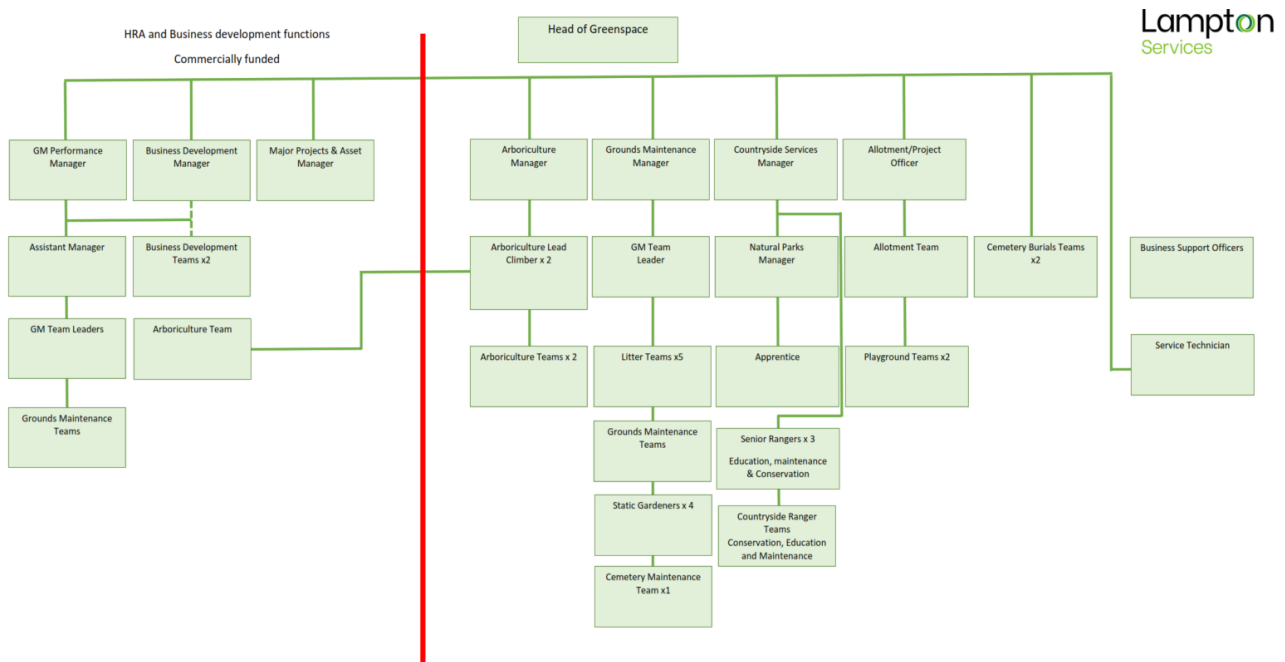
Assistance with finance; administration, project support, lead on Parks communications and web design management.





## Greenspace Management Structure

The following GS roles are responsible for the management of Hounslow's parks and open spaces:



### Head of Service

Responsible for the ground's maintenance service provision. Oversees the delivery of the specification which includes infrastructure.

### Projects Manager including the Allotment Service

Responsible for the development of park infrastructure, management of the allotment service, overseeing horticultural standards, schemes, and developments. Main contact for contractors (CDM). Friends and Member liaison.

### Countryside Manager

Responsible for the management of the borough's countryside service. This role includes the management of the Ranger team and educational, animal husbandry, environmental and wildlife operations/programs associated with these locations.

### Planned Maintenance Manager

Responsible for the management of the operational resources to deliver the ground maintenance services for the parks and open spaces sites.

### Performance & Support Officer

Customer Service functions- Freedom of Information (FOI), customer enquiries, councillors' enquiries, and monthly statistics; technical project support.





### Tree Team Manager

Responsible for the teams that carry out the inspections and maintenance of the boroughs 85,000 park trees. Oversees all tree planting schemes for the council and community groups in parks. Managing and mapping/recording of invasive species. Planning application guidance to LBH.

### Playground Inspectors x2

Visual, operational, and minor repairs of playgrounds. Inspected annually external contractor.

### Operational Teams

Ground maintenance is delivered using mobile teams. These teams provide the Grass cutting, horticultural tasks, general maintenance, litter bin emptying, and litter picking.

### Business Support Officer

Provides administration for fleet, handles finances and overtime schedules.



**London Borough of Hounslow**

Hounslow House, 7 Bath Road  
Hounslow TW3 3EB

[www.hounslow.gov.uk](http://www.hounslow.gov.uk)

---

**Tel: 0208 583 5555**

---



**London Borough  
of Hounslow**



**Friends of  
Inwood  
Park**

**Lampton**  
Services  
Greenspace