

Inspection Report

Company Name LB of Hounslow	Scheduled Start Date 04/06/2025	Inspection Completed on 04/06/2025
Location of Inspection Sidney Gardens (ESTSIDN)	Scheduled Time of Inspection 10:05 AM	Inspection Submission Time 3:53 PM
Inspector that undertook inspection Will Reeves	Template Used Estate Inspection	PDF Sent to Will.Reeves@hounslow.gov.uk,Stefan.Nor@Hounslow.gov.uk,miguel.re@hounslow.gov.uk

Inspection Score and Overall Grade



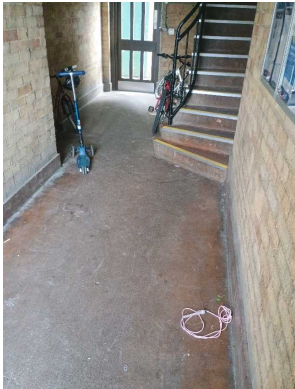
Actual Score	Max Score	Inspection %
20	20	100
Banding Name Default Banding	Overall Inspection Result Default Banding Item	

1 Inspection Details

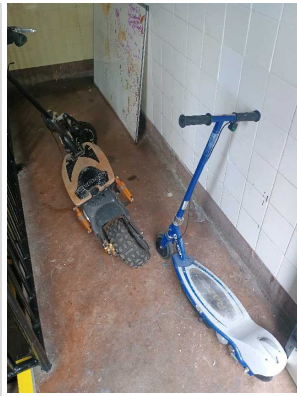
1.1 - Question Type of Inspection	1.1 - Responses Quarterly	
1.2 - Question Area	1.2 - Responses East	
1.3 - Question How many blocks are you inspecting in the estate today?	1.3 - Responses 2	

2 Block 1

2.1 - Question Please state the name of the block you are inspecting	2.1 - Responses Sidney Gardens	
2.2 - Question Please confirm you have checked everything at this block?	2.2 - Responses Y	
2.3 - Question Are there any issues to raise at this block?	2.3 - Responses Y	
2.4 - Question Are there any Ground Maintenance Issues?	2.4 - Responses Y	
2.5 - Question Are there Grass Cutting issues?	2.5 - Responses N	
2.6 - Question Are there Weeding issues?	2.6 - Responses Y	2.6 - Comments

		04/06/2025 grass at start, not sure if GM or highways
Q 2.6 - Photo 		
2.7 - Question Are there Flower/Shrub Areas issues?	2.7 - Responses N	
2.8 - Question Are there Trees: Pruning issues?	2.8 - Responses N	
2.9 - Question Are there Safety – Foliage & Root Problems issues?	2.9 - Responses N	
2.10 - Question Are there Hedges Trimmed issues?	2.10 - Responses Y	2.10 - Comments 04/06/2025 area at rear will need cutting back soon
Q 2.10 - Photo 		
2.11 - Question Are there any Internal Caretaking issues?	2.11 - Responses Y	2.11 - Comments 04/06/2025 17-24 bikes and litter
Q 2.11 - Photo 		
2.12 - Question Are there any Cleanliness: Stairs issues?	2.12 - Responses Y	
2.13 - Question Are there any Landings issues?	2.13 - Responses N	
2.14 - Question Are there any Entrances issues?	2.14 - Responses N	

2.15 - Question Are there any Lifts issues?	2.15 - Responses N	
2.16 - Question Are there any Door and Window Glazing issues?	2.16 - Responses N	
2.17 - Question Are there any Ledges issues?	2.17 - Responses N	
2.18 - Question Are there any Walls issues?	2.18 - Responses N	
2.19 - Question Are there any Lighting issues?	2.19 - Responses N	
2.20 - Question Are there any Handrails secure issues?	2.20 - Responses N	
2.21 - Question Are there any Chute Rooms issues?	2.21 - Responses N	
2.22 - Question Are there any Signage issues?	2.22 - Responses N	
2.23 - Question Are there any Graffiti issues?	2.23 - Responses N	
2.24 - Question Are there any issues with cleaning completion sheets?	2.24 - Responses N	
2.25 - Question Are there any issues with Notice Boards?	2.25 - Responses N	
2.26 - Question Are there any External Caretaking issues?	2.26 - Responses N	
2.37 - Question Are there any Communal Issues?	2.37 - Responses Y	
2.38 - Question Are there any Abandoned Vehicles?	2.38 - Responses N	
2.39 - Question Are there any Street Lighting Issues?	2.39 - Responses N	
2.40 - Question Are there any Pot holes?	2.40 - Responses N	
2.41 - Question Are there any issues with the Cleanliness of roads/car parks?	2.41 - Responses N	
2.42 - Question Are the notice boards are up to date?	2.42 - Responses N	
2.43 - Question Is there any old signage to report?	2.43 - Responses N	
2.44 - Question Are there any Items stored in drying areas?	2.44 - Responses Y	2.44 - Comments 04/06/2025 e bikes top floor of 17-24
Q 2.44 - Photo		



2.45 - Question Are there any Items stored in Communal areas?	2.45 - Responses N	
2.46 - Question Is the roof access doors locked?	2.46 - Responses N	
2.47 - Question Are there any Bulk rubbish items?	2.47 - Responses N	
2.48 - Question Are there any Untidy gardens?	2.48 - Responses N	
2.49 - Question Are there any Fire Risk Issues?	2.49 - Responses N	
2.57 - Question Are there Communal Repairs to raise?	2.57 - Responses Y	2.57 - Comments 04/06/2025 17-24 door sticking and fire drop not working
2.58 - Question Are there any Communal lighting repairs?	2.58 - Responses N	
2.59 - Question Are there any Window repairs?	2.59 - Responses N	
2.60 - Question Are there any Door Handles and Closures repairs?	2.60 - Responses N	
2.61 - Question Are there any Drying Areas repairs?	2.61 - Responses N	
2.62 - Question Are there any Electrical Cupboard Doors repairs?	2.62 - Responses N	
2.63 - Question Are there any Garage Area repairs?	2.63 - Responses N	
2.64 - Question Are there any Graffiti repairs?	2.64 - Responses N	
2.65 - Question Are there any Vandalism repairs?	2.65 - Responses N	
2.66 - Question Are there any Laundry room repairs?	2.66 - Responses N	
2.67 - Question Are there any Flooring repairs?	2.67 - Responses N	

3 Block 2

3.1 - Question Please state the name of the block you are inspecting	3.1 - Responses Holly House	
3.2 - Question	3.2 - Responses Y	

Please confirm you have checked everything at this block?		
3.3 - Question Are there any issues to raise at this block?	3.3 - Responses Y	
3.4 - Question Are there any Ground Maintenance Issues?	3.4 - Responses N	
3.11 - Question Are there any Internal Caretaking issues?	3.11 - Responses Y	
3.12 - Question Are there any Cleanliness: Stairs issues?	3.12 - Responses N	
3.13 - Question Are there any Landings issues?	3.13 - Responses N	
3.14 - Question Are there any Entrances issues?	3.14 - Responses N	
3.15 - Question Are there any Lifts issues?	3.15 - Responses N	
3.16 - Question Are there any Door and Window Glazing issues?	3.16 - Responses N	
3.17 - Question Are there any Ledges issues?	3.17 - Responses N	
3.18 - Question Are there any Walls issues?	3.18 - Responses N	
3.19 - Question Are there any Lighting issues?	3.19 - Responses N	
3.20 - Question Are there any Handrails secure issues?	3.20 - Responses N	
3.21 - Question Are there any Chute Rooms issues?	3.21 - Responses N	
3.22 - Question Are there any Signage issues?	3.22 - Responses N	
3.23 - Question Are there any Graffiti issues?	3.23 - Responses N	
3.24 - Question Are there any issues with cleaning completion sheets?	3.24 - Responses N	
3.25 - Question Are there any issues with Notice Boards?	3.25 - Responses Y	3.25 - Comments 04/06/2025 new caretaking standards and schedules needdd
3.26 - Question Are there any External Caretaking issues?	3.26 - Responses N	
3.37 - Question Are there any Communal Issues?	3.37 - Responses N	
3.49 - Question Are there any Fire Risk Issues?	3.49 - Responses N	
3.57 - Question Are there Communal Repairs to raise?	3.57 - Responses Y	3.57 - Comments 04/06/2025 safety lighting not all working 3.57 - Comments 04/06/2025 notice board lock needs fixing
Q 3.57 - Photo	Q 3.57 - Photo	



3.58 - Question Are there any Communal lighting repairs?	3.58 - Responses N	
3.59 - Question Are there any Window repairs?	3.59 - Responses N	
3.60 - Question Are there any Door Handles and Closures repairs?	3.60 - Responses N	
3.61 - Question Are there any Drying Areas repairs?	3.61 - Responses N	
3.62 - Question Are there any Electrical Cupboard Doors repairs?	3.62 - Responses N	
3.63 - Question Are there any Garage Area repairs?	3.63 - Responses N	
3.64 - Question Are there any Graffiti repairs?	3.64 - Responses N	
3.65 - Question Are there any Vandalism repairs?	3.65 - Responses N	
3.66 - Question Are there any Laundry room repairs?	3.66 - Responses N	
3.67 - Question Are there any Flooring repairs?	3.67 - Responses N	

17 Overall Estate Rating

17.1 - Question Please rate the overall Grounds Maintenance of the estate	17.1 - Responses A	
17.2 - Question Please rate the overall Internal Caretaking of the estate	17.2 - Responses A	
17.3 - Question Please rate the overall External Caretaking of the estate	17.3 - Responses A	
17.4 - Question Please rate the overall Communal Issues of the estate	17.4 - Responses A	
17.5 - Question Please rate the overall Fire Risks of the estate	17.5 - Responses A	