

Inspection Report





Company Name LB of Hounslow	Scheduled Start Date 03/06/2025	Inspection Completed on 04/06/2025
Location of Inspection Sutton Close 1 To 8	Scheduled Time of Inspection 10:00 AM	Inspection Submission Time 8:49 AM
Inspector that undertook inspection Harkiran Nandra	Template Used Estate Inspection	PDF Sent to harkiran.nandra@hounslow.gov.uk,barry.carter@Hounslow.gov.uk

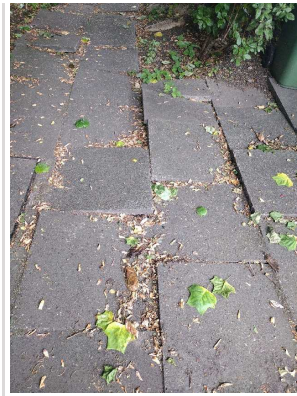
Inspection Score and Overall Grade		
Actual Score	Max Score	Inspection %
13	16	81
Banding Name Default Banding	Overall Inspection Result Default Banding Item	

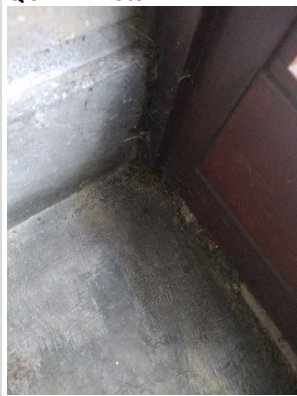
1 Inspection Details		
1.1 - Question Type of Inspection	1.1 - Responses Quarterly	
1.2 - Question Area	1.2 - Responses East	
1.3 - Question How many blocks are you inspecting in the estate today?	1.3 - Responses 3	

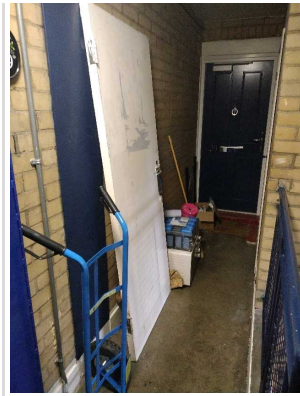
2 Block 1		
2.1 - Question Please state the name of the block you are inspecting	2.1 - Responses 1-8 Sutton close	
2.2 - Question Please confirm you have checked everything at this block?	2.2 - Responses Y	
2.3 - Question Are there any issues to raise at this block?	2.3 - Responses Y	2.3 - Comments 03/06/2025 Dry trees in talks to possibly get new ones in place.
2.4 - Question Are there any Ground Maintenance Issues?	2.4 - Responses Y	
Q 2.4 - Photo		


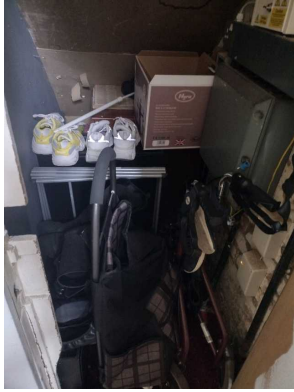



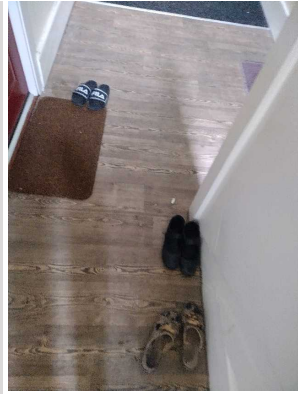
2.11 - Question Are there any Internal Caretaking issues?	2.11 - Responses Y	
2.12 - Question Are there any Cleanliness: Stairs issues?	2.12 - Responses Y	2.12 - Comments 03/06/2025 stairs dusty.
Q 2.12 - Photo 	Q 2.12 - Photo 	
2.14 - Question Are there any Entrances issues?	2.14 - Responses Y	2.14 - Comments 03/06/2025 dusty entrance and cob webs visable.
Q 2.14 - Photo 	Q 2.14 - Photo 	
2.37 - Question Are there any Communal Issues?	2.37 - Responses N	
2.57 - Question Are there Communal Repairs to raise?	2.57 - Responses Y	2.57 - Comments 03/06/2025 painting of building required. 2.57 - Comments 03/06/2025 uneven foot path.
Q 2.57 - Photo	Q 2.57 - Photo	Q 2.57 - Photo



3 Block 2		
3.1 - Question Please state the name of the block you are inspecting	3.1 - Responses 29-39 Oxford Road South	
3.2 - Question Please confirm you have checked everything at this block?	3.2 - Responses Y	
3.3 - Question Are there any issues to raise at this block?	3.3 - Responses Y	
3.11 - Question Are there any Internal Caretaking issues?	3.11 - Responses Y	
3.14 - Question Are there any Entrances issues?	3.14 - Responses Y	3.14 - Comments 03/06/2025 cob webs upon entrance.
Q 3.14 - Photo 		
3.37 - Question Are there any Communal Issues?	3.37 - Responses Y	
3.45 - Question Are there any Items stored in Communal areas?	3.45 - Responses Y	3.45 - Comments 03/06/2025 items outside door. did door knock no answer. 3.45 - Comments 03/06/2025 bulk waste at entrance.
Q 3.45 - Photo	Q 3.45 - Photo	



4 Block 3		
4.1 - Question Please state the name of the block you are inspecting	4.1 - Responses 38-38C Oxford Road South	
4.2 - Question Please confirm you have checked everything at this block?	4.2 - Responses Y	
4.3 - Question Are there any issues to raise at this block?	4.3 - Responses Y	
4.37 - Question Are there any Communal Issues?	4.37 - Responses Y	
4.45 - Question Are there any Items stored in Communal areas?	4.45 - Responses Y	4.45 - Comments 04/06/2025 Tenant at flat 38 has been spoken to many times about storing things in the electric cupboard and the importance of not doing so will raise with HO.
Q 4.45 - Photo 	Q 4.45 - Photo 	Q 4.45 - Photo 
Q 4.45 - Photo	Q 4.45 - Photo	



17 Overall Estate Rating		
17.1 - Question Please rate the overall Grounds Maintenance of the estate	17.1 - Responses A	
17.2 - Question Please rate the overall Internal Caretaking of the estate	17.2 - Responses B	
17.3 - Question Please rate the overall External Caretaking of the estate	17.3 - Responses B	
17.4 - Question Please rate the overall Communal Issues of the estate	17.4 - Responses B	