

Company Name LB of Hounslow	Scheduled Start Date 14/08/2025	Inspection Completed on 15/08/2025
Location of Inspection Hogarth (ESTHOGA)	Scheduled Time of Inspection 10:05 AM	Inspection Submission Time 11:08 AM
Inspector that undertook inspection Harkiran Nandra	Template Used Estate Inspection	PDF Sent to harkiran.nandra@hounslow.gov.uk,Stefan.Nor@Hounslow.gov.uk

Inspection Score and Overall Grade

Actual Score	Max Score	Inspection %
13	16	81
Banding Name Default Banding	Overall Inspection Result Default Banding Item	

1 Inspection Details

1.1 - Question Type of Inspection	1.1 - Responses Quarterly	
1.2 - Question Area	1.2 - Responses East	
1.3 - Question How many blocks are you inspecting in the estate today?	1.3 - Responses 9	

2 Block 1

2.1 - Question Please state the name of the block you are inspecting	2.1 - Responses Thornycroft house 1-20	
2.2 - Question Please confirm you have checked everything at this block?	2.2 - Responses Y	
2.3 - Question Are there any issues to raise at this block?	2.3 - Responses Y	
2.4 - Question Are there any Ground Maintenance Issues?	2.4 - Responses Y	
2.6 - Question Are there Weeding issues?	2.6 - Responses Y	2.6 - Comments 14/08/2025 car park area requires a tidy
Q 2.6 - Photo		



2.26 - Question
Are there any External Caretaking issues?

2.26 - Responses
N

2.26 - Comments
14/08/2025 can bin still missing

Q 2.26 - Photo



2.57 - Question
Are there Communal Repairs to raise?

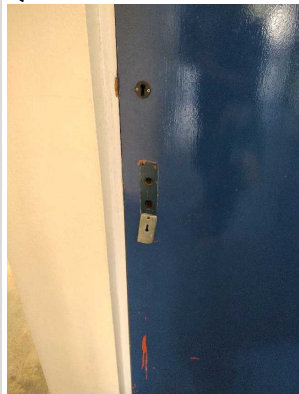
2.57 - Responses
Y

2.62 - Question
Are there any Electrical Cupboard Doors repairs?

2.62 - Responses
Y

2.62 - Comments
14/08/2025 electric door 14-20 requires repairing

Q 2.62 - Photo



2.64 - Question
Are there any Graffiti repairs?



2.64 - Responses
Y

2.64 - Comments
14/08/2025 bollard requires painting

Q 2.64 - Photo



3 Block 2

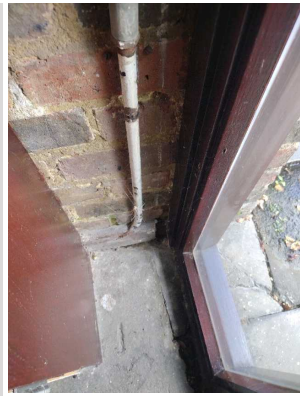
<p>3.1 - Question Please state the name of the block you are inspecting</p>	<p>3.1 - Responses Flaxman house 1-28</p>	
<p>3.2 - Question Please confirm you have checked everything at this block?</p>	<p>3.2 - Responses Y</p>	
<p>3.3 - Question Are there any issues to raise at this block?</p>	<p>3.3 - Responses Y</p>	
<p>3.57 - Question Are there Communal Repairs to raise?</p>	<p>3.57 - Responses Y</p>	<p>3.57 - Comments 14/08/2025 unstable fence bollard requires to be replaced. 3.57 - Comments 14/08/2025 cycle hoop pending fixing</p>
<p>Q 3.57 - Photo</p> 	<p>Q 3.57 - Photo</p> 	

4 Block 3

<p>4.1 - Question Please state the name of the block you are inspecting</p>	<p>4.1 - Responses Coram house 1-18</p>	
<p>4.2 - Question Please confirm you have checked everything at this block?</p>	<p>4.2 - Responses Y</p>	
<p>4.3 - Question Are there any issues to raise at this block?</p>	<p>4.3 - Responses Y</p>	
<p>4.26 - Question Are there any External Caretaking issues?</p>	<p>4.26 - Responses Y</p>	<p>4.26 - Comments 14/08/2025 jet was required by shed area.</p>

<p>Q 4.26 - Photo</p> 		
<p>4.57 - Question Are there Communal Repairs to raise?</p>	<p>4.57 - Responses Y</p>	<p>4.57 - Comments 14/08/2025 broken bollard 4.57 - Comments 14/08/2025 drain cover requires to be put back in place</p>
<p>Q 4.57 - Photo</p> 	<p>Q 4.57 - Photo</p> 	

5 Block 4		
<p>5.1 - Question Please state the name of the block you are inspecting</p>	<p>5.1 - Responses Thornhill house 1-16</p>	
<p>5.2 - Question Please confirm you have checked everything at this block?</p>	<p>5.2 - Responses Y</p>	
<p>5.3 - Question Are there any issues to raise at this block?</p>	<p>5.3 - Responses Y</p>	
<p>5.11 - Question Are there any Internal Caretaking issues?</p>	<p>5.11 - Responses Y</p>	
<p>5.14 - Question Are there any Entrances issues?</p>	<p>5.14 - Responses Y</p>	<p>5.14 - Comments 14/08/2025 cobwebs visable</p>
<p>Q 5.14 - Photo</p>		



5.37 - Question
Are there any Communal Issues?

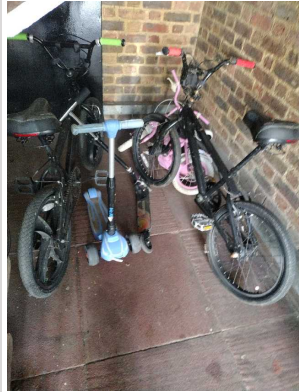
5.37 - Responses
Y

5.45 - Question
Are there any Items stored in Communal areas?

5.45 - Responses
Y

5.45 - Comments
14/08/2025 items stored at bottom of stairs required to be removed.

Q 5.45 - Photo

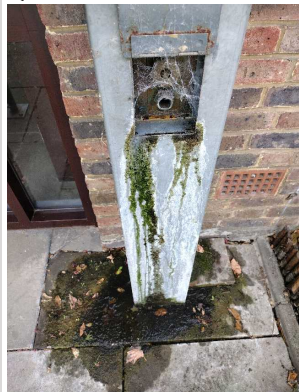


5.57 - Question
Are there Communal Repairs to raise?

5.57 - Responses
Y

5.57 - Comments
14/08/2025 water outlet leaking

Q 5.57 - Photo



6 Block 5

6.1 - Question
Please state the name of the block you are inspecting





6.1 - Responses
kent house 1-50

6.2 - Question
Please confirm you have checked everything at this block?

6.2 - Responses
Y

6.3 - Question

6.3 - Responses
Y


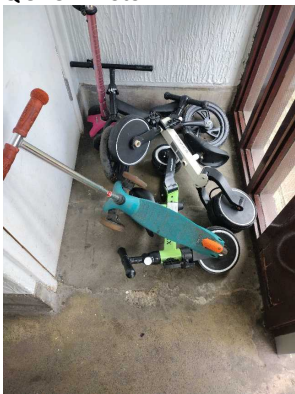
Are there any issues to raise at this block?		
6.4 - Question Are there any Ground Maintenance Issues?	6.4 - Responses Y	6.4 - Comments 14/08/2025 requires a cut back sharp thorns falling in path.
Q 6.4 - Photo 		
6.7 - Question Are there Flower/Shrub Areas issues?	6.7 - Responses Y	6.7 - Comments 14/08/2025 weeding required around Kent house playground
Q 6.7 - Photo 	Q 6.7 - Photo 	
6.57 - Question Are there Communal Repairs to raise?	6.57 - Responses Y	6.57 - Comments 14/08/2025 benches in playground could do with a paint
Q 6.57 - Photo 		

7 Block 6

7.1 - Question Please state the name of the block you are inspecting	7.1 - Responses Hamilton House 1-50	
7.2 - Question Please confirm you have checked everything at this block?	7.2 - Responses Y	
7.3 - Question Are there any issues to raise at this block?	7.3 - Responses Y	



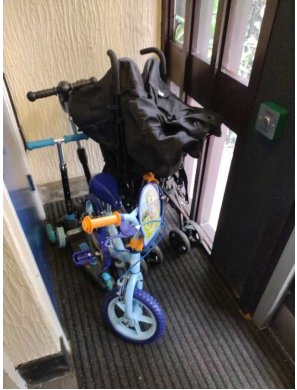
<p>7.4 - Question Are there any Ground Maintenance Issues?</p>	<p>7.4 - Responses Y</p>	
<p>7.7 - Question Are there Flower/Shrub Areas issues?</p>	<p>7.7 - Responses Y</p>	<p>7.7 - Comments 14/08/2025 outside 24 requires a tidy 7.7 - Comments 14/08/2025 play area requires a tidy.</p>
<p>Q 7.7 - Photo</p> 	<p>Q 7.7 - Photo</p> 	<p>Q 7.7 - Photo</p> 
<p>7.57 - Question Are there Communal Repairs to raise?</p>	<p>7.57 - Responses Y</p>	<p>7.57 - Comments 14/08/2025 broken apparatus will raise to Rory. 7.57 - Comments 14/08/2025 bench requires fixing 7.57 - Comments 14/08/2025 water outlet leaking.</p>
<p>Q 7.57 - Photo</p> 	<p>Q 7.57 - Photo</p> 	<p>Q 7.57 - Photo</p> 
<p>7.58 - Question Are there any Communal lighting repairs?</p>	<p>7.58 - Responses Y</p>	<p>7.58 - Comments 14/08/2025 broken bollard.</p>
<p>Q 7.58 - Photo</p> 		

8 Block 7

8.1 - Question Please state the name of the block you are inspecting	8.1 - Responses Garrack house 1-12	
8.2 - Question Please confirm you have checked everything at this block?	8.2 - Responses Y	
8.3 - Question Are there any issues to raise at this block?	8.3 - Responses Y	
8.4 - Question Are there any Ground Maintenance Issues?	8.4 - Responses Y	8.4 - Comments 14/08/2025 outside 5-8 requires a tidy
Q 8.4 - Photo 		
8.37 - Question Are there any Communal Issues?	8.37 - Responses Y	
8.45 - Question Are there any Items stored in Communal areas?	8.45 - Responses Y	8.45 - Comments 14/08/2025 1-6 items at bottom of stairs
Q 8.45 - Photo 		

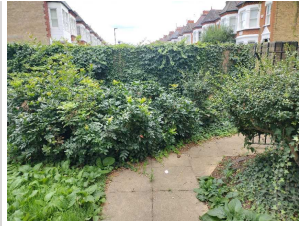
9 Block 8

9.1 - Question Please state the name of the block you are inspecting	9.1 - Responses Oldfield house 1-25	
9.2 - Question Please confirm you have checked everything at this block?	9.2 - Responses Y	
9.3 - Question Are there any issues to raise at this block?	9.3 - Responses Y	

9.4 - Question Are there any Ground Maintenance Issues?	9.4 - Responses Y	9.4 - Comments 14/08/2025 cut back required outside no 13-18
Q 9.4 - Photo 		
9.37 - Question Are there any Communal Issues?	9.37 - Responses Y	
9.45 - Question Are there any Items stored in Communal areas?	9.45 - Responses Y	9.45 - Comments 14/08/2025 items outside no 3 and entrance
Q 9.45 - Photo 	Q 9.45 - Photo 	

10 Block 9

10.1 - Question Please state the name of the block you are inspecting	10.1 - Responses Manor Gardens 1-14	
10.2 - Question Please confirm you have checked everything at this block?	10.2 - Responses Y	
10.3 - Question Are there any issues to raise at this block?	10.3 - Responses Y	
10.4 - Question Are there any Ground Maintenance Issues?	10.4 - Responses Y	10.4 - Comments 14/08/2025 requires a tidy. 10.4 - Comments 14/08/2025 tree outside no 5 very slanted.
Q 10.4 - Photo	Q 10.4 - Photo	



10.57 - Question
Are there Communal Repairs to raise?

10.57 - Responses
Y

10.57 - Comments
15/08/2025 front door not working.

17 Overall Estate Rating

17.1 - Question
Please rate the overall Grounds Maintenance of the estate

17.1 - Responses
A

17.2 - Question
Please rate the overall Internal Caretaking of the estate

17.2 - Responses
B

17.3 - Question
Please rate the overall External Caretaking of the estate

17.3 - Responses
B

17.4 - Question
Please rate the overall Communal Issues of the estate

17.4 - Responses
B