

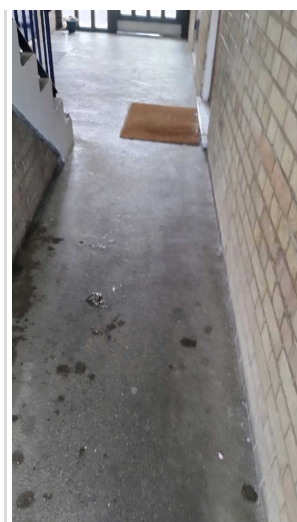
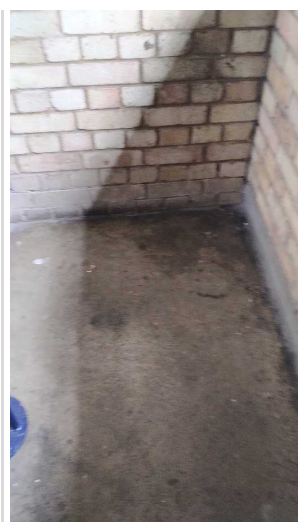
# Inspection Report

<b>Company Name</b> LB of Hounslow	<b>Scheduled Start Date</b> 27/08/2025	<b>Inspection Completed on</b> 01/09/2025
<b>Location of Inspection</b> Elmwood Avenue (ESTELMW)	<b>Scheduled Time of Inspection</b> 4:30 PM	<b>Inspection Submission Time</b> 5:14 PM
<b>Inspector that undertook inspection</b> Asha Sharma	<b>Template Used</b> Estate Inspection	<b>PDF Sent to</b> asha.sharma@hounslow.gov.uk

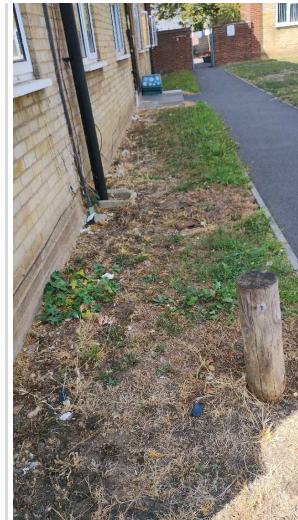
Inspection Score and Overall Grade		
<b>Actual Score</b>	<b>Max Score</b>	<b>Inspection %</b>
11	16	68
<b>Banding Name</b> Default Banding	<b>Overall Inspection Result</b> Default Banding Item	

1 Inspection Details		
<b>1.1 - Question</b> Type of Inspection	<b>1.1 - Responses</b> Quarterly	
<b>1.2 - Question</b> Area	<b>1.2 - Responses</b> West	
<b>1.3 - Question</b> How many blocks are you inspecting in the estate today?	<b>1.3 - Responses</b> 10	


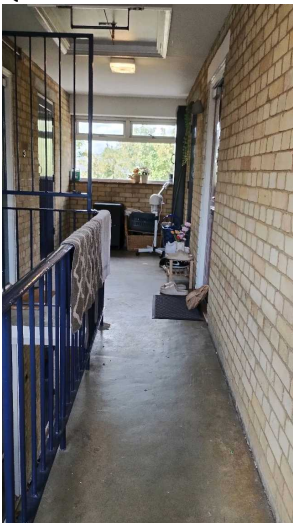
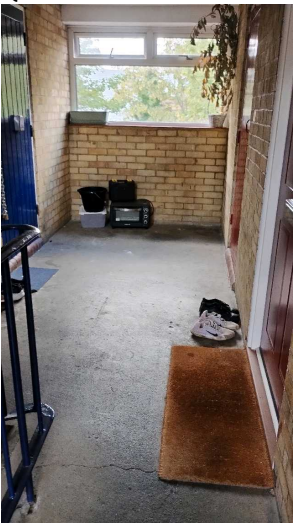

2 Block 1		
<b>2.1 - Question</b> Please state the name of the block you are inspecting	<b>2.1 - Responses</b> 23--34 Rookeries Close	
<b>2.2 - Question</b> Please confirm you have checked everything at this block?	<b>2.2 - Responses</b> Y	
<b>2.3 - Question</b> Are there any issues to raise at this block?	<b>2.3 - Responses</b> Y	
<b>2.4 - Question</b> Are there any Ground Maintenance Issues?	<b>2.4 - Responses</b> N	
<b>2.11 - Question</b> Are there any Internal Caretaking issues?	<b>2.11 - Responses</b> Y	<b>2.11 - Comments</b> 27/08/2025 Block was not cleaned at the time inspection.
<b>2.12 - Question</b> Are there any Cleanliness: Stairs issues?	<b>2.12 - Responses</b> Y	<b>2.12 - Comments</b> 27/08/2025 Floors and stairwells were not cleaned at the time of inspection.
<b>Q 2.12 - Photo</b>	<b>Q 2.12 - Photo</b>	<b>Q 2.12 - Photo</b>



<b>2.13 - Question</b> Are there any Landings issues?	<b>2.13 - Responses</b> N	
<b>2.14 - Question</b> Are there any Entrances issues?	<b>2.14 - Responses</b> N	
<b>2.15 - Question</b> Are there any Lifts issues?	<b>2.15 - Responses</b> N	
<b>2.16 - Question</b> Are there any Door and Window Glazing issues?	<b>2.16 - Responses</b> N	
<b>2.17 - Question</b> Are there any Ledges issues?	<b>2.17 - Responses</b> Y	
<b>2.18 - Question</b> Are there any Walls issues?	<b>2.18 - Responses</b> N	
<b>2.19 - Question</b> Are there any Lighting issues?	<b>2.19 - Responses</b> N	
<b>2.20 - Question</b> Are there any Handrails secure issues?	<b>2.20 - Responses</b> N	
<b>2.21 - Question</b> Are there any Chute Rooms issues?	<b>2.21 - Responses</b> N	
<b>2.22 - Question</b> Are there any Signage issues?	<b>2.22 - Responses</b> N	
<b>2.23 - Question</b> Are there any Graffiti issues?	<b>2.23 - Responses</b> N	
<b>2.24 - Question</b> Are there any issues with cleaning completion sheets?	<b>2.24 - Responses</b> N	
<b>2.25 - Question</b> Are there any issues with Notice Boards?	<b>2.25 - Responses</b> N	
<b>2.26 - Question</b> Are there any External Caretaking issues?	<b>2.26 - Responses</b> Y	<b>2.26 - Comments</b> 27/08/2025 Litter, leaves as nd rubbish in front and rear gardens.
<b>Q 2.26 - Photo</b>	<b>Q 2.26 - Photo</b>	<b>Q 2.26 - Photo</b>

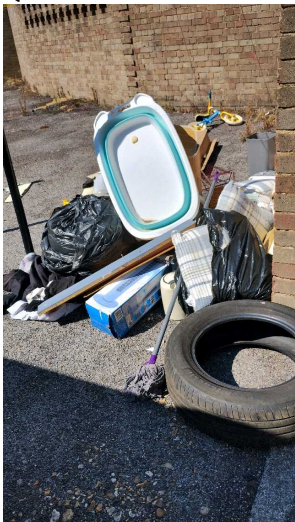


<b>2.27 - Question</b> Are there any Cleanliness: Grassed Areas issues?	<b>2.27 - Responses</b> Y	
<b>2.28 - Question</b> Are there any Paved Areas issues?	<b>2.28 - Responses</b> Y	
<b>2.29 - Question</b> Are there any Car Parks issues?	<b>2.29 - Responses</b> N	
<b>2.30 - Question</b> Are there any Play Areas (Cleanliness, condition of play equipment, surfaces and fencing) issues?	<b>2.30 - Responses</b> N	
<b>2.31 - Question</b> Are there any Litter Picking issues?	<b>2.31 - Responses</b> Y	
<b>2.32 - Question</b> Are there any Bin Rooms issues?	<b>2.32 - Responses</b> N	
<b>2.33 - Question</b> Are there any Bulk Refuse and Graffiti issues?	<b>2.33 - Responses</b> Y	
<b>2.34 - Question</b> Are there any Signs issues?	<b>2.34 - Responses</b> N	
<b>2.35 - Question</b> Are there any Numberings issues?	<b>2.35 - Responses</b> N	
<b>2.36 - Question</b> Are there any Notice Boards issues?	<b>2.36 - Responses</b> N	
<b>2.37 - Question</b> Are there any Communal Issues?	<b>2.37 - Responses</b> Y	
<b>2.38 - Question</b> Are there any Abandoned Vehicles?	<b>2.38 - Responses</b> N	
<b>2.39 - Question</b> Are there any Street Lighting Issues?	<b>2.39 - Responses</b> N	
<b>2.40 - Question</b> Are there any Pot holes?	<b>2.40 - Responses</b> N	
<b>2.41 - Question</b> Are there any issues with the Cleanliness of roads/car parks?	<b>2.41 - Responses</b> N	
<b>2.42 - Question</b> Are the notice boards are up to date?	<b>2.42 - Responses</b> Y	
<b>2.43 - Question</b> Is there any old signage to report?	<b>2.43 - Responses</b> N	
<b>2.44 - Question</b>	<b>2.44 - Responses</b> N	

Are there any Items stored in drying areas?		
<b>2.45 - Question</b> Are there any Items stored in Communal areas?	<b>2.45 - Responses</b> Y	<b>2.45 - Comments</b> 27/08/2025 Personal items stored in the communal landings.
<b>Q 2.45 - Photo</b> 	<b>Q 2.45 - Photo</b> 	<b>Q 2.45 - Photo</b> 
<b>2.46 - Question</b> Is the roof access doors locked?	<b>2.46 - Responses</b> Y	
<b>2.47 - Question</b> Are there any Bulk rubbish items?	<b>2.47 - Responses</b> Y	<b>2.47 - Comments</b> 27/08/2025 Dumped bulk items in the bin area.
<b>Q 2.47 - Photo</b> 		
<b>2.48 - Question</b> Are there any Untidy gardens?	<b>2.48 - Responses</b> N	
<b>2.49 - Question</b> Are there any Fire Risk Issues?	<b>2.49 - Responses</b> N	
<b>2.57 - Question</b> Are there Communal Repairs to raise?	<b>2.57 - Responses</b> N	
<b>3 Block 2</b>		
<b>3.1 - Question</b> Please state the name of the block you are inspecting	<b>3.1 - Responses</b> 200-207 Elmwood Avenue	



<b>3.2 - Question</b> Please confirm you have checked everything at this block?	<b>3.2 - Responses</b> Y	
<b>3.3 - Question</b> Are there any issues to raise at this block?	<b>3.3 - Responses</b> Y	
<b>3.4 - Question</b> Are there any Ground Maintenance Issues?	<b>3.4 - Responses</b> N	
<b>3.11 - Question</b> Are there any Internal Caretaking issues?	<b>3.11 - Responses</b> Y	
<b>3.12 - Question</b> Are there any Cleanliness: Stairs issues?	<b>3.12 - Responses</b> Y	
<b>3.13 - Question</b> Are there any Landings issues?	<b>3.13 - Responses</b> Y	
<b>3.14 - Question</b> Are there any Entrances issues?	<b>3.14 - Responses</b> Y	
<b>3.15 - Question</b> Are there any Lifts issues?	<b>3.15 - Responses</b> N	
<b>3.16 - Question</b> Are there any Door and Window Glazing issues?	<b>3.16 - Responses</b> N	
<b>3.17 - Question</b> Are there any Ledges issues?	<b>3.17 - Responses</b> N	
<b>3.18 - Question</b> Are there any Walls issues?	<b>3.18 - Responses</b> N	
<b>3.19 - Question</b> Are there any Lighting issues?	<b>3.19 - Responses</b> N	
<b>3.20 - Question</b> Are there any Handrails secure issues?	<b>3.20 - Responses</b> Y	
<b>3.21 - Question</b> Are there any Chute Rooms issues?	<b>3.21 - Responses</b> N	
<b>3.22 - Question</b> Are there any Signage issues?	<b>3.22 - Responses</b> N	
<b>3.23 - Question</b> Are there any Graffiti issues?	<b>3.23 - Responses</b> N	
<b>3.24 - Question</b> Are there any issues with cleaning completion sheets?	<b>3.24 - Responses</b> N	
<b>3.25 - Question</b> Are there any issues with Notice Boards?	<b>3.25 - Responses</b> N	
<b>3.26 - Question</b> Are there any External Caretaking issues?	<b>3.26 - Responses</b> Y	
<b>3.27 - Question</b> Are there any Cleanliness: Grassed Areas issues?	<b>3.27 - Responses</b> N	
<b>3.28 - Question</b> Are there any Paved Areas issues?	<b>3.28 - Responses</b> Y	
<b>3.29 - Question</b> Are there any Car Parks issues?	<b>3.29 - Responses</b> N	
<b>3.30 - Question</b> Are there any Play Areas (Cleanliness, condition of play equipment, surfaces and fencing) issues?	<b>3.30 - Responses</b> N	


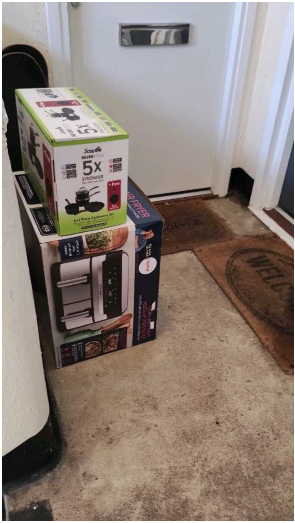


<b>3.31 - Question</b> Are there any Litter Picking issues?	<b>3.31 - Responses</b> N	
<b>3.32 - Question</b> Are there any Bin Rooms issues?	<b>3.32 - Responses</b> N	
<b>3.33 - Question</b> Are there any Bulk Refuse and Graffiti issues?	<b>3.33 - Responses</b> Y	
<b>3.34 - Question</b> Are there any Signs issues?	<b>3.34 - Responses</b> N	
<b>3.35 - Question</b> Are there any Numberings issues?	<b>3.35 - Responses</b> N	
<b>3.36 - Question</b> Are there any Notice Boards issues?	<b>3.36 - Responses</b> N	
<b>3.37 - Question</b> Are there any Communal Issues?	<b>3.37 - Responses</b> Y	
<b>3.38 - Question</b> Are there any Abandoned Vehicles?	<b>3.38 - Responses</b> N	
<b>3.39 - Question</b> Are there any Street Lighting Issues?	<b>3.39 - Responses</b> N	
<b>3.40 - Question</b> Are there any Pot holes?	<b>3.40 - Responses</b> N	
<b>3.41 - Question</b> Are there any issues with the Cleanliness of roads/car parks?	<b>3.41 - Responses</b> N	
<b>3.42 - Question</b> Are the notice boards are up to date?	<b>3.42 - Responses</b> N	
<b>3.43 - Question</b> Is there any old signage to report?	<b>3.43 - Responses</b> N	
<b>3.44 - Question</b> Are there any Items stored in drying areas?	<b>3.44 - Responses</b> Y	<b>3.44 - Comments</b> 27/08/2025 Fly tipped items in the drying area , rear of the block.
<b>Q 3.44 - Photo</b> 		
<b>3.45 - Question</b> Are there any Items stored in Communal areas?	<b>3.45 - Responses</b> Y	
<b>3.46 - Question</b> Is the roof access doors locked?	<b>3.46 - Responses</b> Y	
<b>3.47 - Question</b> Are there any Bulk rubbish items?	<b>3.47 - Responses</b> Y	
<b>3.48 - Question</b> Are there any Untidy gardens?	<b>3.48 - Responses</b> N	



<b>3.49 - Question</b> Are there any Fire Risk Issues?	<b>3.49 - Responses</b> N	
<b>3.57 - Question</b> Are there Communal Repairs to raise?	<b>3.57 - Responses</b> N	

### 4 Block 3

<b>4.1 - Question</b> Please state the name of the block you are inspecting	<b>4.1 - Responses</b> 207-214	
<b>4.2 - Question</b> Please confirm you have checked everything at this block?	<b>4.2 - Responses</b> Y	
<b>4.3 - Question</b> Are there any issues to raise at this block?	<b>4.3 - Responses</b> Y	
<b>4.4 - Question</b> Are there any Ground Maintenance Issues?	<b>4.4 - Responses</b> N	
<b>4.11 - Question</b> Are there any Internal Caretaking issues?	<b>4.11 - Responses</b> N	
<b>4.26 - Question</b> Are there any External Caretaking issues?	<b>4.26 - Responses</b> Y	
<b>4.27 - Question</b> Are there any Cleanliness: Grassed Areas issues?	<b>4.27 - Responses</b> N	
<b>4.28 - Question</b> Are there any Paved Areas issues?	<b>4.28 - Responses</b> Y	<b>4.28 - Comments</b> 27/08/2025 Accimalted rubbish/ litter at the rear of the block.
<b>Q 4.28 - Photo</b> 	<b>Q 4.28 - Photo</b> 	
<b>4.29 - Question</b> Are there any Car Parks issues?	<b>4.29 - Responses</b> N	
<b>4.30 - Question</b> Are there any Play Areas (Cleanliness, condition of play equipment, surfaces and fencing) issues?	<b>4.30 - Responses</b> N	
<b>4.31 - Question</b> Are there any Litter Picking issues?	<b>4.31 - Responses</b> N	
<b>4.32 - Question</b>	<b>4.32 - Responses</b>	

Are there any Bin Rooms issues?	N	
<b>4.33 - Question</b> Are there any Bulk Refuse and Graffiti issues?	<b>4.33 - Responses</b> Y	
<b>4.34 - Question</b> Are there any Signs issues?	<b>4.34 - Responses</b> N	
<b>4.35 - Question</b> Are there any Numberings issues?	<b>4.35 - Responses</b> N	
<b>4.36 - Question</b> Are there any Notice Boards issues?	<b>4.36 - Responses</b> N	
<b>4.37 - Question</b> Are there any Communal Issues?	<b>4.37 - Responses</b> Y	<b>4.37 - Comments</b> 27/08/2025 Personal items stored on top floor.
<b>Q 4.37 - Photo</b> 	<b>Q 4.37 - Photo</b> 	
<b>4.38 - Question</b> Are there any Abandoned Vehicles?	<b>4.38 - Responses</b> N	
<b>4.39 - Question</b> Are there any Street Lighting Issues?	<b>4.39 - Responses</b> N	
<b>4.40 - Question</b> Are there any Pot holes?	<b>4.40 - Responses</b> N	
<b>4.41 - Question</b> Are there any issues with the Cleanliness of roads/car parks?	<b>4.41 - Responses</b> N	
<b>4.42 - Question</b> Are the notice boards are up to date?	<b>4.42 - Responses</b> Y	
<b>4.43 - Question</b> Is there any old signage to report?	<b>4.43 - Responses</b> N	
<b>4.44 - Question</b> Are there any Items stored in drying areas?	<b>4.44 - Responses</b> N	
<b>4.45 - Question</b> Are there any Items stored in Communal areas?	<b>4.45 - Responses</b> Y	
<b>4.46 - Question</b> Is the roof access doors locked?	<b>4.46 - Responses</b> Y	
<b>4.47 - Question</b> Are there any Bulk rubbish items?	<b>4.47 - Responses</b> Y	
<b>4.48 - Question</b> Are there any Untidy gardens?	<b>4.48 - Responses</b> N	
<b>4.49 - Question</b> Are there any Fire Risk Issues?	<b>4.49 - Responses</b> N	

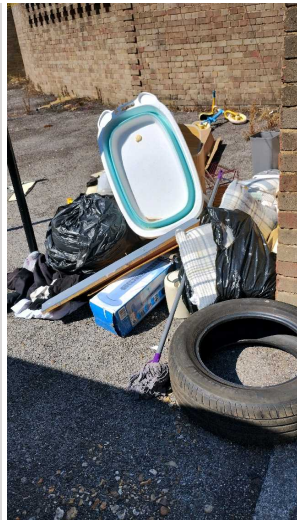


<b>4.57 - Question</b> Are there Communal Repairs to raise?	<b>4.57 - Responses</b> Y	<b>4.57 - Comments</b> 27/08/2025 Adjust the rear door on the left side of the shed area. As it has dropped and therefore rubbing against the floor and not closing automatically.
<b>Q 4.57 - Photo</b> 	<b>Q 4.57 - Photo</b> 	
<b>4.58 - Question</b> Are there any Communal lighting repairs?	<b>4.58 - Responses</b> N	
<b>4.59 - Question</b> Are there any Window repairs?	<b>4.59 - Responses</b> N	
<b>4.60 - Question</b> Are there any Door Handles and Closures repairs?	<b>4.60 - Responses</b> N	
<b>4.61 - Question</b> Are there any Drying Areas repairs?	<b>4.61 - Responses</b> N	
<b>4.62 - Question</b> Are there any Electrical Cupboard Doors repairs?	<b>4.62 - Responses</b> N	
<b>4.63 - Question</b> Are there any Garage Area repairs?	<b>4.63 - Responses</b> N	
<b>4.64 - Question</b> Are there any Graffiti repairs?	<b>4.64 - Responses</b> N	
<b>4.65 - Question</b> Are there any Vandalism repairs?	<b>4.65 - Responses</b> N	
<b>4.66 - Question</b> Are there any Laundry room repairs?	<b>4.66 - Responses</b> N	
<b>4.67 - Question</b> Are there any Flooring repairs?	<b>4.67 - Responses</b> N	

#### 5 Block 4


<b>5.1 - Question</b> Please state the name of the block you are inspecting	<b>5.1 - Responses</b> 216-223	
<b>5.2 - Question</b> Please confirm you have checked everything at this block?	<b>5.2 - Responses</b> Y	
<b>5.3 - Question</b> Are there any issues to raise at this block?	<b>5.3 - Responses</b> Y	

<b>5.4 - Question</b> Are there any Ground Maintenance Issues?	<b>5.4 - Responses</b> N	
<b>5.11 - Question</b> Are there any Internal Caretaking issues?	<b>5.11 - Responses</b> N	
<b>5.26 - Question</b> Are there any External Caretaking issues?	<b>5.26 - Responses</b> Y	
<b>5.27 - Question</b> Are there any Cleanliness: Grassed Areas issues?	<b>5.27 - Responses</b> N	
<b>5.28 - Question</b> Are there any Paved Areas issues?	<b>5.28 - Responses</b> Y	
<b>5.29 - Question</b> Are there any Car Parks issues?	<b>5.29 - Responses</b> N	
<b>5.30 - Question</b> Are there any Play Areas (Cleanliness, condition of play equipment, surfaces and fencing) issues?	<b>5.30 - Responses</b> N	
<b>5.31 - Question</b> Are there any Litter Picking issues?	<b>5.31 - Responses</b> N	
<b>5.32 - Question</b> Are there any Bin Rooms issues?	<b>5.32 - Responses</b> N	
<b>5.33 - Question</b> Are there any Bulk Refuse and Graffiti issues?	<b>5.33 - Responses</b> Y	
<b>5.34 - Question</b> Are there any Signs issues?	<b>5.34 - Responses</b> N	
<b>5.35 - Question</b> Are there any Numberings issues?	<b>5.35 - Responses</b> N	
<b>5.36 - Question</b> Are there any Notice Boards issues?	<b>5.36 - Responses</b> N	
<b>5.37 - Question</b> Are there any Communal Issues?	<b>5.37 - Responses</b> Y	
<b>5.38 - Question</b> Are there any Abandoned Vehicles?	<b>5.38 - Responses</b> N	
<b>5.39 - Question</b> Are there any Street Lighting Issues?	<b>5.39 - Responses</b> N	
<b>5.40 - Question</b> Are there any Pot holes?	<b>5.40 - Responses</b> N	
<b>5.41 - Question</b> Are there any issues with the Cleanliness of roads/car parks?	<b>5.41 - Responses</b> N	
<b>5.42 - Question</b> Are the notice boards are up to date?	<b>5.42 - Responses</b> N	
<b>5.43 - Question</b> Is there any old signage to report?	<b>5.43 - Responses</b> N	
<b>5.44 - Question</b> Are there any Items stored in drying areas?	<b>5.44 - Responses</b> Y	
<b>Q 5.44 - Photo</b>		

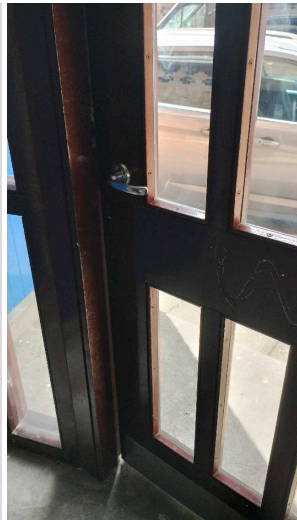


<b>5.45 - Question</b> Are there any Items stored in Communal areas?	<b>5.45 - Responses</b> N	
<b>5.46 - Question</b> Is the roof access doors locked?	<b>5.46 - Responses</b> Y	
<b>5.47 - Question</b> Are there any Bulk rubbish items?	<b>5.47 - Responses</b> N	
<b>5.48 - Question</b> Are there any Untidy gardens?	<b>5.48 - Responses</b> N	
<b>5.49 - Question</b> Are there any Fire Risk Issues?	<b>5.49 - Responses</b> N	
<b>5.57 - Question</b> Are there Communal Repairs to raise?	<b>5.57 - Responses</b> N	

## 6 Block 5

<b>6.1 - Question</b> Please state the name of the block you are inspecting	<b>6.1 - Responses</b> 224 231 Elmwood Avenue	
<b>6.2 - Question</b> Please confirm you have checked everything at this block?	<b>6.2 - Responses</b> Y	
<b>6.3 - Question</b> Are there any issues to raise at this block?	<b>6.3 - Responses</b> Y	
<b>6.4 - Question</b> Are there any Ground Maintenance Issues?	<b>6.4 - Responses</b> N	
<b>6.11 - Question</b> Are there any Internal Caretaking issues?	<b>6.11 - Responses</b> N	
<b>6.26 - Question</b> Are there any External Caretaking issues?	<b>6.26 - Responses</b> Y	<b>6.26 - Comments</b> 01/09/2025 Litter / Rubbish around the drain gully rear of the block.
<b>Q 6.26 - Photo</b> 	<b>Q 6.26 - Photo</b>	

		
<b>6.27 - Question</b> Are there any Cleanliness: Grassed Areas issues?	<b>6.27 - Responses</b> N	
<b>6.28 - Question</b> Are there any Paved Areas issues?	<b>6.28 - Responses</b> Y	
<b>6.29 - Question</b> Are there any Car Parks issues?	<b>6.29 - Responses</b> N	
<b>6.30 - Question</b> Are there any Play Areas (Cleanliness, condition of play equipment, surfaces and fencing) issues?	<b>6.30 - Responses</b> N	
<b>6.31 - Question</b> Are there any Litter Picking issues?	<b>6.31 - Responses</b> N	
<b>6.32 - Question</b> Are there any Bin Rooms issues?	<b>6.32 - Responses</b> N	
<b>6.33 - Question</b> Are there any Bulk Refuse and Graffiti issues?	<b>6.33 - Responses</b> N	
<b>6.34 - Question</b> Are there any Signs issues?	<b>6.34 - Responses</b> N	
<b>6.35 - Question</b> Are there any Numberings issues?	<b>6.35 - Responses</b> N	
<b>6.36 - Question</b> Are there any Notice Boards issues?	<b>6.36 - Responses</b> N	
<b>6.37 - Question</b> Are there any Communal Issues?	<b>6.37 - Responses</b> N	
<b>6.49 - Question</b> Are there any Fire Risk Issues?	<b>6.49 - Responses</b> N	
<b>6.57 - Question</b> Are there Communal Repairs to raise?	<b>6.57 - Responses</b> Y	
<b>6.58 - Question</b> Are there any Communal lighting repairs?	<b>6.58 - Responses</b> N	
<b>6.59 - Question</b> Are there any Window repairs?	<b>6.59 - Responses</b> N	
<b>6.60 - Question</b> Are there any Door Handles and Closures repairs?	<b>6.60 - Responses</b> Y	<b>6.60 - Comments</b> 01/09/2025 Renew the rear exit door handle.As it not locking.
<b>Q 6.60 - Photo</b>		

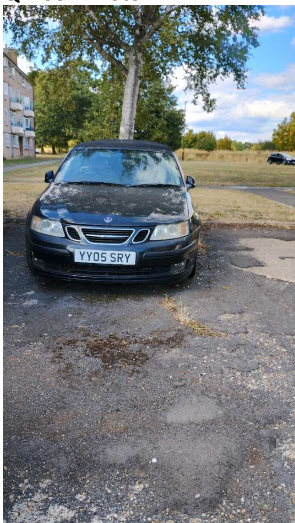


<b>6.61 - Question</b> Are there any Drying Areas repairs?	<b>6.61 - Responses</b> N	
<b>6.62 - Question</b> Are there any Electrical Cupboard Doors repairs?	<b>6.62 - Responses</b> N	
<b>6.63 - Question</b> Are there any Garage Area repairs?	<b>6.63 - Responses</b> N	
<b>6.64 - Question</b> Are there any Graffiti repairs?	<b>6.64 - Responses</b> N	
<b>6.65 - Question</b> Are there any Vandalism repairs?	<b>6.65 - Responses</b> N	
<b>6.66 - Question</b> Are there any Laundry room repairs?	<b>6.66 - Responses</b> N	
<b>6.67 - Question</b> Are there any Flooring repairs?	<b>6.67 - Responses</b> N	

### 7 Block 6

<b>7.1 - Question</b> Please state the name of the block you are inspecting	<b>7.1 - Responses</b> 240 - 247 Elmwood Avenue	
<b>7.2 - Question</b> Please confirm you have checked everything at this block?	<b>7.2 - Responses</b> Y	
<b>7.3 - Question</b> Are there any issues to raise at this block?	<b>7.3 - Responses</b> Y	
<b>7.4 - Question</b> Are there any Ground Maintenance Issues?	<b>7.4 - Responses</b> N	
<b>7.11 - Question</b> Are there any Internal Caretaking issues?	<b>7.11 - Responses</b> N	
<b>7.26 - Question</b> Are there any External Caretaking issues?	<b>7.26 - Responses</b> N	
<b>7.37 - Question</b> Are there any Communal Issues?	<b>7.37 - Responses</b> Y	
<b>7.38 - Question</b> Are there any Abandoned Vehicles?	<b>7.38 - Responses</b> Y	<b>7.38 - Comments</b> 01/09/2025 Abandoned Vehicle: parked rear of the block : Sabb



		black Reg YY05 SRY.
<b>Q 7.38 - Photo</b>		
		
<b>7.39 - Question</b> Are there any Street Lighting Issues?	<b>7.39 - Responses</b> N	
<b>7.40 - Question</b> Are there any Pot holes?	<b>7.40 - Responses</b> N	
<b>7.41 - Question</b> Are there any issues with the Cleanliness of roads/car parks?	<b>7.41 - Responses</b> N	
<b>7.42 - Question</b> Are the notice boards are up to date?	<b>7.42 - Responses</b> N	
<b>7.43 - Question</b> Is there any old signage to report?	<b>7.43 - Responses</b> N	
<b>7.44 - Question</b> Are there any Items stored in drying areas?	<b>7.44 - Responses</b> Y	
<b>7.45 - Question</b> Are there any Items stored in Communal areas?	<b>7.45 - Responses</b> Y	
<b>7.46 - Question</b> Is the roof access doors locked?	<b>7.46 - Responses</b> Y	
<b>7.47 - Question</b> Are there any Bulk rubbish items?	<b>7.47 - Responses</b> Y	
<b>7.48 - Question</b> Are there any Untidy gardens?	<b>7.48 - Responses</b> N	
<b>7.49 - Question</b> Are there any Fire Risk Issues?	<b>7.49 - Responses</b> N	

8 Block 7		
<b>8.1 - Question</b> Please state the name of the block you are inspecting	<b>8.1 - Responses</b> 232-238 Elmwood Avenue	
<b>8.2 - Question</b> Please confirm you have checked everything at this block?	<b>8.2 - Responses</b> Y	
<b>8.3 - Question</b> Are there any issues to raise at this block?	<b>8.3 - Responses</b> N	

9 Block 8		
<b>9.1 - Question</b> Please state the name of the block you are inspecting	<b>9.1 - Responses</b> 239- 247	
<b>9.2 - Question</b> Please confirm you have checked everything at this block?	<b>9.2 - Responses</b> Y	
<b>9.3 - Question</b> Are there any issues to raise at this block?	<b>9.3 - Responses</b> N	


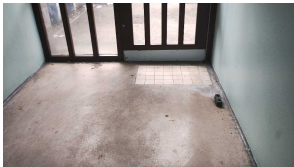



10 Block 9		
<b>10.1 - Question</b> Please state the name of the block you are inspecting	<b>10.1 - Responses</b> 248-255 Elmwood Abunue	
<b>10.2 - Question</b> Please confirm you have checked everything at this block?	<b>10.2 - Responses</b> Y	
<b>10.3 - Question</b> Are there any issues to raise at this block?	<b>10.3 - Responses</b> Y	
<b>10.4 - Question</b> Are there any Ground Maintenance Issues?	<b>10.4 - Responses</b> N	
<b>10.11 - Question</b> Are there any Internal Caretaking issues?	<b>10.11 - Responses</b> N	
<b>10.26 - Question</b> Are there any External Caretaking issues?	<b>10.26 - Responses</b> N	
<b>10.37 - Question</b> Are there any Communal Issues?	<b>10.37 - Responses</b> Y	
<b>10.38 - Question</b> Are there any Abandoned Vehicles?	<b>10.38 - Responses</b> N	
<b>10.39 - Question</b> Are there any Street Lighting Issues?	<b>10.39 - Responses</b> N	
<b>10.40 - Question</b> Are there any Pot holes?	<b>10.40 - Responses</b> N	
<b>10.41 - Question</b> Are there any issues with the Cleanliness of roads/car parks?	<b>10.41 - Responses</b> N	
<b>10.42 - Question</b> Are the notice boards are up to date?	<b>10.42 - Responses</b> N	
<b>10.43 - Question</b> Is there any old signage to report?	<b>10.43 - Responses</b> N	
<b>10.44 - Question</b> Are there any Items stored in drying areas?	<b>10.44 - Responses</b> N	
<b>10.45 - Question</b> Are there any Items stored in Communal areas?	<b>10.45 - Responses</b> Y	<b>10.45 - Comments</b> 01/09/2025 Dumped bulk items in the bin area.
<b>Q 10.45 - Photo</b>		

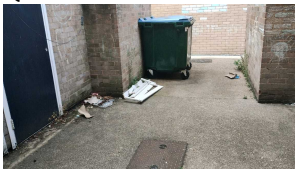




<b>10.46 - Question</b> Is the roof access doors locked?	<b>10.46 - Responses</b> Y	
<b>10.47 - Question</b> Are there any Bulk rubbish items?	<b>10.47 - Responses</b> Y	
<b>10.48 - Question</b> Are there any Untidy gardens?	<b>10.48 - Responses</b> N	
<b>10.49 - Question</b> Are there any Fire Risk Issues?	<b>10.49 - Responses</b> N	
<b>10.57 - Question</b> Are there Communal Repairs to raise?	<b>10.57 - Responses</b> Y	<b>10.57 - Comments</b> 01/09/2025 Exposed loose cable to trunk in fron of the block.
<b>10.58 - Question</b> Are there any Communal lighting repairs?	<b>10.58 - Responses</b> N	
<b>10.59 - Question</b> Are there any Window repairs?	<b>10.59 - Responses</b> N	
<b>10.60 - Question</b> Are there any Door Handles and Closures repairs?	<b>10.60 - Responses</b> N	
<b>10.61 - Question</b> Are there any Drying Areas repairs?	<b>10.61 - Responses</b> N	
<b>10.62 - Question</b> Are there any Electrical Cupboard Doors repairs?	<b>10.62 - Responses</b> N	
<b>10.63 - Question</b> Are there any Garage Area repairs?	<b>10.63 - Responses</b> N	
<b>10.64 - Question</b> Are there any Graffiti repairs?	<b>10.64 - Responses</b> N	
<b>10.65 - Question</b> Are there any Vandalism repairs?	<b>10.65 - Responses</b> N	
<b>10.66 - Question</b> Are there any Laundry room repairs?	<b>10.66 - Responses</b> N	
<b>10.67 - Question</b> Are there any Flooring repairs?	<b>10.67 - Responses</b> N	

## 11 Block 10

<b>11.1 - Question</b> Please state the name of the block you are inspecting	<b>11.1 - Responses</b> 10-16 Clifton Parad	

<b>11.2 - Question</b> Please confirm you have checked everything at this block?	<b>11.2 - Responses</b> Y	
<b>11.3 - Question</b> Are there any issues to raise at this block?	<b>11.3 - Responses</b> Y	
<b>11.4 - Question</b> Are there any Ground Maintenance Issues?	<b>11.4 - Responses</b> N	
<b>11.11 - Question</b> Are there any Internal Caretaking issues?	<b>11.11 - Responses</b> Y	<b>11.11 - Comments</b> 01/09/2025 dust / rubbish in communal hallway and stairwell. entrance/ exit doors were not cleaned at the time of inspection.
<b>Q 11.11 - Photo</b> 	<b>Q 11.11 - Photo</b> 	
<b>11.12 - Question</b> Are there any Cleanliness: Stairs issues?	<b>11.12 - Responses</b> Y	
<b>Q 11.12 - Photo</b> 	<b>Q 11.12 - Photo</b> 	<b>Q 11.12 - Photo</b> 
<b>11.13 - Question</b> Are there any Landings issues?	<b>11.13 - Responses</b> N	
<b>11.14 - Question</b> Are there any Entrances issues?	<b>11.14 - Responses</b> Y	
<b>11.15 - Question</b> Are there any Lifts issues?	<b>11.15 - Responses</b> N	

<b>11.16 - Question</b> Are there any Door and Window Glazing issues?	<b>11.16 - Responses</b> N	
<b>11.17 - Question</b> Are there any Ledges issues?	<b>11.17 - Responses</b> N	
<b>11.18 - Question</b> Are there any Walls issues?	<b>11.18 - Responses</b> Y	
<b>11.19 - Question</b> Are there any Lighting issues?	<b>11.19 - Responses</b> N	
<b>11.20 - Question</b> Are there any Handrails secure issues?	<b>11.20 - Responses</b> N	
<b>11.21 - Question</b> Are there any Chute Rooms issues?	<b>11.21 - Responses</b> N	
<b>11.22 - Question</b> Are there any Signage issues?	<b>11.22 - Responses</b> N	
<b>11.23 - Question</b> Are there any Graffiti issues?	<b>11.23 - Responses</b> N	
<b>11.24 - Question</b> Are there any issues with cleaning completion sheets?	<b>11.24 - Responses</b> N	
<b>11.25 - Question</b> Are there any issues with Notice Boards?	<b>11.25 - Responses</b> N	
<b>11.26 - Question</b> Are there any External Caretaking issues?	<b>11.26 - Responses</b> Y	
<b>11.27 - Question</b> Are there any Cleanliness: Grassed Areas issues?	<b>11.27 - Responses</b> N	
<b>11.28 - Question</b> Are there any Paved Areas issues?	<b>11.28 - Responses</b> Y	<b>11.28 - Comments</b> 01/09/2025 Rubbish in shed area , drain gullies X2 Full of rubbish at the time of inspection.
<b>Q 11.28 - Photo</b> 	<b>Q 11.28 - Photo</b> 	<b>Q 11.28 - Photo</b> 
<b>11.29 - Question</b> Are there any Car Parks issues?	<b>11.29 - Responses</b> N	
<b>11.30 - Question</b> Are there any Play Areas (Cleanliness, condition of play equipment, surfaces and fencing) issues?	<b>11.30 - Responses</b> N	
<b>11.31 - Question</b> Are there any Litter Picking issues?	<b>11.31 - Responses</b> Y	<b>11.31 - Comments</b>



		01/09/2025 Litter / Rubbish around the metro bin stores at the time inspection.
<p><b>Q 11.31 - Photo</b></p> 	<p><b>Q 11.31 - Photo</b></p> 	
<p><b>11.32 - Question</b> Are there any Bin Rooms issues?</p>	<p><b>11.32 - Responses</b> N</p>	
<p><b>11.33 - Question</b> Are there any Bulk Refuse and Graffiti issues?</p>	<p><b>11.33 - Responses</b> N</p>	
<p><b>11.34 - Question</b> Are there any Signs issues?</p>	<p><b>11.34 - Responses</b> N</p>	
<p><b>11.35 - Question</b> Are there any Numberings issues?</p>	<p><b>11.35 - Responses</b> N</p>	
<p><b>11.36 - Question</b> Are there any Notice Boards issues?</p>	<p><b>11.36 - Responses</b> N</p>	
<p><b>11.37 - Question</b> Are there any Communal Issues?</p>	<p><b>11.37 - Responses</b> N</p>	
<p><b>11.49 - Question</b> Are there any Fire Risk Issues?</p>	<p><b>11.49 - Responses</b> N</p>	
<p><b>11.57 - Question</b> Are there Communal Repairs to raise?</p>	<p><b>11.57 - Responses</b> N</p>	

## 17 Overall Estate Rating

<p><b>17.1 - Question</b> Please rate the overall Grounds Maintenance of the estate</p>	<p><b>17.1 - Responses</b> B</p>	
<p><b>17.2 - Question</b> Please rate the overall Internal Caretaking of the estate</p>	<p><b>17.2 - Responses</b> B</p>	
<p><b>17.3 - Question</b> Please rate the overall External Caretaking of the estate</p>	<p><b>17.3 - Responses</b> C</p>	
<p><b>17.4 - Question</b> Please rate the overall Communal Issues of the estate</p>	<p><b>17.4 - Responses</b> B</p>	