

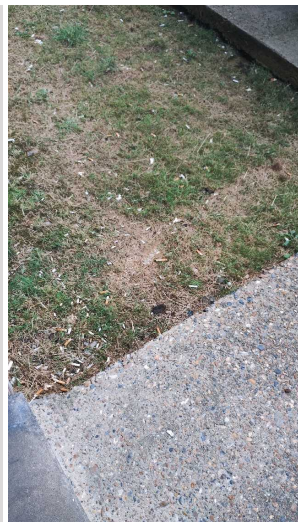
Inspection Report

Company Name LB of Hounslow	Scheduled Start Date 08/07/2025	Inspection Completed on 10/07/2025
Location of Inspection Winslow Way (ESTWINS)	Scheduled Time of Inspection 1:08 PM	Inspection Submission Time 3:33 PM
Inspector that undertook inspection Asha Sharma	Template Used Estate Inspection	PDF Sent to asha.sharma@hounslow.gov.uk





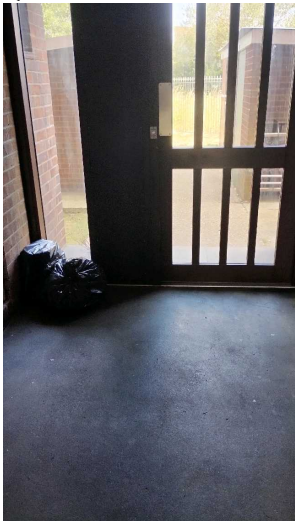
Inspection Score and Overall Grade		
Actual Score	Max Score	Inspection %
12	16	75
Banding Name Default Banding	Overall Inspection Result Default Banding Item	

1 Inspection Details		
1.1 - Question Type of Inspection	1.1 - Responses Quarterly	
1.2 - Question Area	1.2 - Responses West	
1.3 - Question How many blocks are you inspecting in the estate today?	1.3 - Responses 6	


2 Block 1		
2.1 - Question Please state the name of the block you are inspecting	2.1 - Responses 1-8 Webb House	
2.2 - Question Please confirm you have checked everything at this block?	2.2 - Responses Y	
2.3 - Question Are there any issues to raise at this block?	2.3 - Responses Y	
2.4 - Question Are there any Ground Maintenance Issues?	2.4 - Responses Y	
2.5 - Question Are there Grass Cutting issues?	2.5 - Responses N	2.5 - Comments 10/07/2025 Re-garss the bare patches on the grass area in front of the block.
Q 2.5 - Photo		

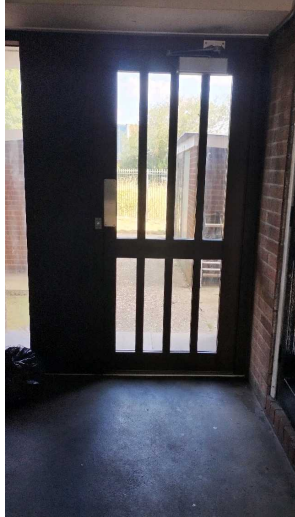


2.6 - Question Are there Weeding issues?	2.6 - Responses N	
2.7 - Question Are there Flower/Shrub Areas issues?	2.7 - Responses Y	
2.8 - Question Are there Trees: Pruning issues?	2.8 - Responses N	
2.9 - Question Are there Safety – Foliage & Root Problems issues?	2.9 - Responses Y	2.9 - Comments 08/07/2025 A shrub in the car park has been knocked and uprooted needs to be secured back on the ground ..
Q 2.9 - Photo 		
2.10 - Question Are there Hedges Trimmed issues?	2.10 - Responses N	
2.11 - Question Are there any Internal Caretaking issues?	2.11 - Responses N	
2.26 - Question Are there any External Caretaking issues?	2.26 - Responses Y	
2.27 - Question Are there any Cleanliness: Grassed Areas issues?	2.27 - Responses Y	
2.36 - Question Are there any Notice Boards issues?	2.36 - Responses N	
2.37 - Question Are there any Communal Issues?	2.37 - Responses N	
2.49 - Question Are there any Fire Risk Issues?	2.49 - Responses N	
2.57 - Question Are there Communal Repairs to raise?	2.57 - Responses Y	2.57 - Comments 10/07/2025 Renew a knee high fence against the grass area rear of Webb House. 2.57 - Comments 10/07/2025 Fix loose fence against the grass area rear of Webb House.
Q 2.57 - Photo	Q 2.57 - Photo	

		
2.58 - Question Are there any Communal lighting repairs?	2.58 - Responses N	
2.59 - Question Are there any Window repairs?	2.59 - Responses Y	2.59 - Comments 08/07/2025 New keys to be cut for front and rear windows on 1st floor in 1-8 Webb House.
Q 2.59 - Photo 	Q 2.59 - Photo 	
2.60 - Question Are there any Door Handles and Closures repairs?	2.60 - Responses Y	2.60 - Comments 08/07/2025 Rear door closer to be adjusted as the door is slamming back loudly when shut.
Q 2.60 - Photo 		
2.61 - Question Are there any Drying Areas repairs?	2.61 - Responses N	
2.62 - Question Are there any Electrical Cupboard Doors repairs?	2.62 - Responses N	
2.63 - Question Are there any Garage Area repairs?	2.63 - Responses N	
2.64 - Question Are there any Graffiti repairs?	2.64 - Responses N	
2.65 - Question Are there any Vandalism repairs?	2.65 - Responses N	
2.66 - Question Are there any Laundry room repairs?	2.66 - Responses N	
2.67 - Question Are there any Flooring repairs?	2.67 - Responses N	

3 Block 2

3.1 - Question Please state the name of the block you are inspecting	3.1 - Responses 9-16 Webb House	
3.2 - Question Please confirm you have checked everything at this block?	3.2 - Responses Y	
3.3 - Question Are there any issues to raise at this block?	3.3 - Responses Y	
3.4 - Question Are there any Ground Maintenance Issues?	3.4 - Responses N	
3.11 - Question Are there any Internal Caretaking issues?	3.11 - Responses N	
3.26 - Question Are there any External Caretaking issues?	3.26 - Responses N	
3.37 - Question Are there any Communal Issues?	3.37 - Responses Y	
3.38 - Question Are there any Abandoned Vehicles?	3.38 - Responses N	
3.39 - Question Are there any Street Lighting Issues?	3.39 - Responses N	
3.40 - Question Are there any Pot holes?	3.40 - Responses N	
3.41 - Question Are there any issues with the Cleanliness of roads/car parks?	3.41 - Responses N	
3.42 - Question Are the notice boards are up to date?	3.42 - Responses Y	
3.43 - Question Is there any old signage to report?	3.43 - Responses N	
3.45 - Question Are there any Items stored in Communal areas?	3.45 - Responses Y	3.45 - Comments 10/07/2025 Unwanted bulk items left in the communal shed area. Letters to be sent to all residents.
Q 3.45 - Photo 		
3.46 - Question Is the roof access doors locked?	3.46 - Responses Y	
3.47 - Question Are there any Bulk rubbish items?	3.47 - Responses Y	
3.48 - Question Are there any Untidy gardens?	3.48 - Responses N	
3.49 - Question Are there any Fire Risk Issues?	3.49 - Responses N	
3.57 - Question Are there Communal Repairs to raise?	3.57 - Responses Y	3.57 - Comments 10/07/2025 Rear door door stopper to be adjusted as the door is slamming back when opening and closing.

Q 3.57 - Photo

3.58 - Question Are there any Communal lighting repairs?	3.58 - Responses N	
3.59 - Question Are there any Window repairs?	3.59 - Responses N	
3.60 - Question Are there any Door Handles and Closures repairs?	3.60 - Responses N	
3.61 - Question Are there any Drying Areas repairs?	3.61 - Responses N	
3.62 - Question Are there any Electrical Cupboard Doors repairs?	3.62 - Responses N	
3.63 - Question Are there any Garage Area repairs?	3.63 - Responses N	
3.64 - Question Are there any Graffiti repairs?	3.64 - Responses N	
3.65 - Question Are there any Vandalism repairs?	3.65 - Responses N	
3.66 - Question Are there any Laundry room repairs?	3.66 - Responses N	
3.67 - Question Are there any Flooring repairs?	3.67 - Responses N	

4 Block 3

4.1 - Question Please state the name of the block you are inspecting	4.1 - Responses 1-8 Ogden House	
4.2 - Question Please confirm you have checked everything at this block?	4.2 - Responses Y	
4.3 - Question Are there any issues to raise at this block?	4.3 - Responses Y	
4.4 - Question Are there any Ground Maintenance Issues?	4.4 - Responses Y	
4.5 - Question Are there Grass Cutting issues?	4.5 - Responses N	4.5 - Comments

	10/07/2025 Re-garss the bare patches on the grass area in front of the block.
--	---

Q 4.5 - Photo



4.6 - Question Are there Weeding issues?	4.6 - Responses N	
4.7 - Question Are there Flower/Shrub Areas issues?	4.7 - Responses N	
4.8 - Question Are there Trees: Pruning issues?	4.8 - Responses N	
4.9 - Question Are there Safety – Foliage & Root Problems issues?	4.9 - Responses N	
4.10 - Question Are there Hedges Trimmed issues?	4.10 - Responses N	
4.11 - Question Are there any Internal Caretaking issues?	4.11 - Responses N	
4.26 - Question Are there any External Caretaking issues?	4.26 - Responses N	
4.37 - Question Are there any Communal Issues?	4.37 - Responses N	
4.49 - Question Are there any Fire Risk Issues?	4.49 - Responses N	
4.57 - Question Are there Communal Repairs to raise?	4.57 - Responses N	



5 Block 4

5.1 - Question Please state the name of the block you are inspecting	5.1 - Responses 9-16 Ogden House	
5.2 - Question Please confirm you have checked everything at this block?	5.2 - Responses Y	
5.3 - Question Are there any issues to raise at this block?	5.3 - Responses Y	
5.4 - Question Are there any Ground Maintenance Issues?	5.4 - Responses N	
5.11 - Question Are there any Internal Caretaking issues?	5.11 - Responses N	
5.26 - Question Are there any External Caretaking issues?	5.26 - Responses N	
5.37 - Question Are there any Communal Issues?	5.37 - Responses Y	
5.38 - Question Are there any Abandoned Vehicles?	5.38 - Responses N	

5.39 - Question Are there any Street Lighting Issues?	5.39 - Responses N	
5.40 - Question Are there any Pot holes?	5.40 - Responses N	
5.41 - Question Are there any issues with the Cleanliness of roads/car parks?	5.41 - Responses N	
5.42 - Question Are the notice boards are up to date?	5.42 - Responses Y	
5.43 - Question Is there any old signage to report?	5.43 - Responses N	
5.44 - Question Are there any Items stored in drying areas?	5.44 - Responses N	
5.45 - Question Are there any Items stored in Communal areas?	5.45 - Responses Y	
5.46 - Question Is the roof access doors locked?	5.46 - Responses Y	
5.47 - Question Are there any Bulk rubbish items?	5.47 - Responses N	
5.48 - Question Are there any Untidy gardens?	5.48 - Responses N	
5.49 - Question Are there any Fire Risk Issues?	5.49 - Responses N	
5.57 - Question Are there Communal Repairs to raise?	5.57 - Responses N	





6 Block 5

6.1 - Question Please state the name of the block you are inspecting	6.1 - Responses 17-24 Ogden House	
6.2 - Question Please confirm you have checked everything at this block?	6.2 - Responses Y	
6.3 - Question Are there any issues to raise at this block?	6.3 - Responses Y	
6.4 - Question Are there any Ground Maintenance Issues?	6.4 - Responses N	
6.11 - Question Are there any Internal Caretaking issues?	6.11 - Responses N	
6.26 - Question Are there any External Caretaking issues?	6.26 - Responses N	
6.37 - Question Are there any Communal Issues?	6.37 - Responses Y	
6.38 - Question Are there any Abandoned Vehicles?	6.38 - Responses N	
6.39 - Question Are there any Street Lighting Issues?	6.39 - Responses N	
6.40 - Question Are there any Pot holes?	6.40 - Responses N	
6.41 - Question	6.41 - Responses	



Are there any issues with the Cleanliness of roads/car parks?	N	
6.42 - Question Are the notice boards are up to date?	6.42 - Responses N	
6.43 - Question Is there any old signage to report?	6.43 - Responses N	
6.44 - Question Are there any Items stored in drying areas?	6.44 - Responses N	
6.45 - Question Are there any Items stored in Communal areas?	6.45 - Responses Y	6.45 - Comments 10/07/2025 Unwanted items stored in the shed areas . Letters to be sent to all residents.
Q 6.45 - Photo 	Q 6.45 - Photo 	
6.46 - Question Is the roof access doors locked?	6.46 - Responses Y	
6.47 - Question Are there any Bulk rubbish items?	6.47 - Responses Y	
6.48 - Question Are there any Untidy gardens?	6.48 - Responses N	
6.49 - Question Are there any Fire Risk Issues?	6.49 - Responses N	
6.57 - Question Are there Communal Repairs to raise?	6.57 - Responses N	

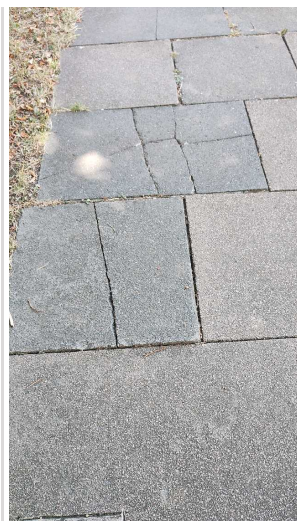
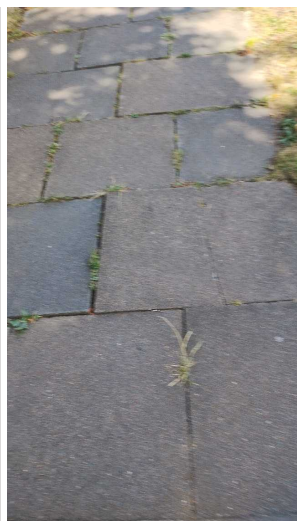
7 Block 6

7.1 - Question Please state the name of the block you are inspecting	7.1 - Responses 1-8 Hardie House	
7.2 - Question Please confirm you have checked everything at this block?	7.2 - Responses Y	
7.3 - Question Are there any issues to raise at this block?	7.3 - Responses Y	
7.4 - Question Are there any Ground Maintenance Issues?	7.4 - Responses Y	
7.5 - Question Are there Grass Cutting issues?	7.5 - Responses N	
7.6 - Question Are there Weeding issues?	7.6 - Responses N	
7.7 - Question Are there Flower/Shrub Areas issues?	7.7 - Responses Y	7.7 - Comments 10/07/2025 overgrown shrubs in the rear garden to be pruned as it blocking the window completely.
Q 7.7 - Photo		

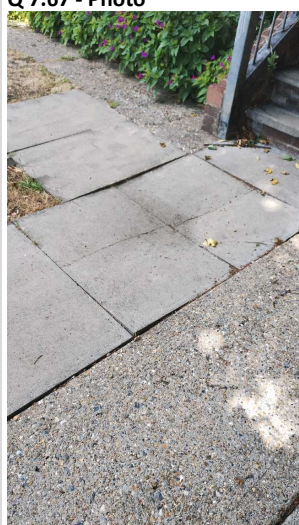
		
7.8 - Question Are there Trees: Pruning issues?	7.8 - Responses Y	7.8 - Comments 10/07/2025 Overgrown branches of tree encroaching up to gutter, in front of the block to be pruned.
7.9 - Question Are there Safety – Foliage & Root Problems issues?	7.9 - Responses N	
7.10 - Question Are there Hedges Trimmed issues?	7.10 - Responses N	
7.11 - Question Are there any Internal Caretaking issues?	7.11 - Responses N	
7.26 - Question Are there any External Caretaking issues?	7.26 - Responses N	
7.37 - Question Are there any Communal Issues?	7.37 - Responses N	
7.49 - Question Are there any Fire Risk Issues?	7.49 - Responses N	
7.57 - Question Are there Communal Repairs to raise?	7.57 - Responses Y	7.57 - Comments 10/07/2025 Renew broken knee high fences in the car park against the grass area next to Hardie house. 7.57 - Comments 10/07/2025 Uneven slabs6 and broken slabs X6 on the path in front of the block. 7.57 - Comments 10/07/2025 Repointing the brick wall in the rear garden near the tree on the right side. 7.57 - Comments 10/07/2025 relay uneven slabs on the path in the rear garden leading ext chute.
Q 7.57 - Photo 	Q 7.57 - Photo 	Q 7.57 - Photo 
Q 7.57 - Photo	Q 7.57 - Photo	Q 7.57 - Photo

		
<p>Q 7.57 - Photo</p> 	<p>Q 7.57 - Photo</p> 	<p>Q 7.57 - Photo</p> 
<p>Q 7.57 - Photo</p> 	<p>Q 7.57 - Photo</p> 	<p>Q 7.57 - Photo</p> 
<p>7.58 - Question Are there any Communal lighting repairs?</p>	<p>7.58 - Responses N</p>	
<p>7.59 - Question Are there any Window repairs?</p>	<p>7.59 - Responses N</p>	
<p>7.60 - Question</p>	<p>7.60 - Responses</p>	

Are there any Door Handles and Closures repairs?	N	
7.61 - Question Are there any Drying Areas repairs?	7.61 - Responses N	
7.62 - Question Are there any Electrical Cupboard Doors repairs?	7.62 - Responses N	
7.63 - Question Are there any Garage Area repairs?	7.63 - Responses N	
7.64 - Question Are there any Graffiti repairs?	7.64 - Responses N	
7.65 - Question Are there any Vandalism repairs?	7.65 - Responses Y	7.65 - Comments 10/07/2025 Front entrance door glass broken.
Q 7.65 - Photo 		
7.66 - Question Are there any Laundry room repairs?	7.66 - Responses N	
7.67 - Question Are there any Flooring repairs?	7.67 - Responses Y	7.67 - Comments 10/07/2025 relay uneven 6 and broken slabs 6 on the path in front of the block.
Q 7.67 - Photo 		
Q 7.67 - Photo 		
Q 7.67 - Photo 		
Q 7.67 - Photo	Q 7.67 - Photo	Q 7.67 - Photo



Q 7.67 - Photo



17 Overall Estate Rating		
17.1 - Question Please rate the overall Grounds Maintenance of the estate	17.1 - Responses B	
17.2 - Question Please rate the overall Internal Caretaking of the estate	17.2 - Responses B	
17.3 - Question Please rate the overall External Caretaking of the estate	17.3 - Responses B	
17.4 - Question Please rate the overall Communal Issues of the estate	17.4 - Responses B	