

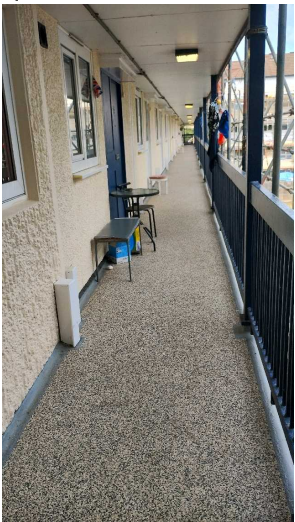
# Inspection Report

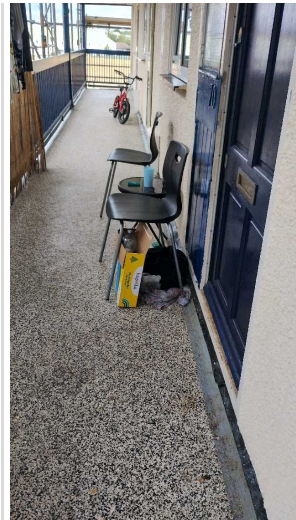
|  |   |   |
|--|---|---|
| <b>Company Name</b><br>LB of Hounslow                      | <b>Scheduled Start Date</b><br>15/07/2025       | <b>Inspection Completed on</b><br>01/08/2025      |
| <b>Location of Inspection</b><br>Sandalwood Road (ESTSAND) | <b>Scheduled Time of Inspection</b><br>10:13 AM | <b>Inspection Submission Time</b><br>4:12 PM      |
| <b>Inspector that undertook inspection</b><br>Asha Sharma  | <b>Template Used</b><br>Estate Inspection       | <b>PDF Sent to</b><br>asha.sharma@hounslow.gov.uk |

| Inspection Score and Overall Grade     |  |                     |
|--|--|---------------------|
| <b>Actual Score</b>                    | <b>Max Score</b>   | <b>Inspection %</b> |
| 15                                     | 20   | 75                  |
| <b>Banding Name</b><br>Default Banding | <b>Overall Inspection Result</b><br>Default Banding Item |                     |

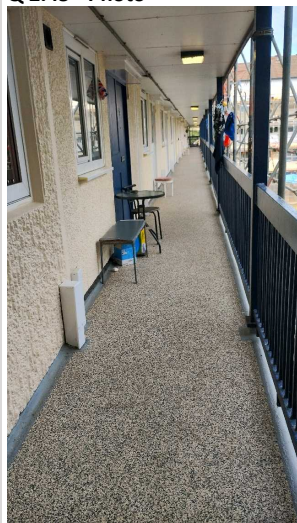
| 1 Inspection Details   |                                     |  |
|--|-------------------------------------|--|
| <b>1.1 - Question</b><br>Type of Inspection                                      | <b>1.1 - Responses</b><br>Quarterly |  |
| <b>1.2 - Question</b><br>Area  | <b>1.2 - Responses</b><br>West      |  |
| <b>1.3 - Question</b><br>How many blocks are you inspecting in the estate today? | <b>1.3 - Responses</b><br>8         |  |

| 2 Block 1  |   |  |
|--|---|--|
| <b>2.1 - Question</b><br>Please state the name of the block you are inspecting     | <b>2.1 - Responses</b><br>49-74 Sandalwood Rd |  |
| <b>2.2 - Question</b><br>Please confirm you have checked everything at this block? | <b>2.2 - Responses</b><br>Y                   |  |
| <b>2.3 - Question</b><br>Are there any issues to raise at this block?              | <b>2.3 - Responses</b><br>Y                   |  |
| <b>2.4 - Question</b><br>Are there any Ground Maintenance Issues?                  | <b>2.4 - Responses</b><br>N                   |  |
| <b>2.11 - Question</b><br>Are there any Internal Caretaking issues?                | <b>2.11 - Responses</b><br>N                  |  |
| <b>2.26 - Question</b><br>Are there any External Caretaking issues?                | <b>2.26 - Responses</b><br>N                  |  |
| <b>2.37 - Question</b><br>Are there any Communal Issues?                           | <b>2.37 - Responses</b><br>Y                  |  |
| <b>2.38 - Question</b><br>Are there any Abandoned Vehicles?                        | <b>2.38 - Responses</b><br>N                  |  |

|  |  |  |
|--|--|--|
| <b>2.39 - Question</b><br>Are there any Street Lighting Issues?  | <b>2.39 - Responses</b><br>N   |  |
| <b>2.40 - Question</b><br>Are there any Pot holes?   | <b>2.40 - Responses</b><br>N   |  |
| <b>2.41 - Question</b><br>Are there any issues with the Cleanliness of roads/car parks?                      | <b>2.41 - Responses</b><br>Y   | <b>2.41 - Comments</b><br>23/07/2025 Filthy floors in the balcony in front of some flats.                    |
| <b>Q 2.41 - Photo</b><br>   | <b>Q 2.41 - Photo</b><br>   | <b>Q 2.41 - Photo</b><br> |
| <b>Q 2.41 - Photo</b><br> | <b>Q 2.41 - Photo</b><br> |  |
| <b>2.42 - Question</b><br>Are the notice boards are up to date?  | <b>2.42 - Responses</b><br>Y   |  |
| <b>2.43 - Question</b><br>Is there any old signage to report?  | <b>2.43 - Responses</b><br>N   |  |
| <b>2.44 - Question</b><br>Are there any Items stored in drying areas?  | <b>2.44 - Responses</b><br>N   |  |
| <b>2.45 - Question</b><br>Are there any Items stored in Communal areas?                                      | <b>2.45 - Responses</b><br>Y   | <b>2.45 - Comments</b><br>01/08/2025 personal items and rubbish bags left in the balconies.                  |
| <b>Q 2.45 - Photo</b>  | <b>Q 2.45 - Photo</b>  | <b>Q 2.45 - Photo</b>  |




**Q 2.45 - Photo**



|  |                              |  |
|--|------------------------------|--|
| <b>2.46 - Question</b><br>Is the roof access doors locked?     | <b>2.46 - Responses</b><br>Y |  |
| <b>2.47 - Question</b><br>Are there any Bulk rubbish items?    | <b>2.47 - Responses</b><br>N |  |
| <b>2.48 - Question</b><br>Are there any Untidy gardens?        | <b>2.48 - Responses</b><br>N |  |
| <b>2.49 - Question</b><br>Are there any Fire Risk Issues?      | <b>2.49 - Responses</b><br>N |  |
| <b>2.57 - Question</b><br>Are there Communal Repairs to raise? | <b>2.57 - Responses</b><br>N |  |


| 3 Block 2  |  |  |
|--|--|--|
| <b>3.1 - Question</b><br>Please state the name of the block you are inspecting     | <b>3.1 - Responses</b><br>2-12 Sandalwood Road |  |
| <b>3.2 - Question</b><br>Please confirm you have checked everything at this block? | <b>3.2 - Responses</b><br>Y                    |  |
| <b>3.3 - Question</b><br>Are there any issues to raise at this block?              | <b>3.3 - Responses</b><br>Y                    |  |
| <b>3.4 - Question</b>  | <b>3.4 - Responses</b>                         |  |

|   |                              |   |
|---|------------------------------|---|
| Are there any Ground Maintenance Issues?  | N                            |   |
| <b>3.11 - Question</b><br>Are there any Internal Caretaking issues?   | <b>3.11 - Responses</b><br>N |   |
| <b>3.26 - Question</b><br>Are there any External Caretaking issues?   | <b>3.26 - Responses</b><br>N |   |
| <b>3.37 - Question</b><br>Are there any Communal Issues?  | <b>3.37 - Responses</b><br>N |   |
| <b>3.49 - Question</b><br>Are there any Fire Risk Issues?   | <b>3.49 - Responses</b><br>N |   |
| <b>3.57 - Question</b><br>Are there Communal Repairs to raise?  | <b>3.57 - Responses</b><br>Y | <b>3.57 - Comments</b><br>01/08/2025 Blocked drain gully under down pipe. |
| <b>Q 3.57 - Photo</b><br> |                              |   |
| <b>3.58 - Question</b><br>Are there any Communal lighting repairs?  | <b>3.58 - Responses</b><br>N |   |
| <b>3.59 - Question</b><br>Are there any Window repairs?   | <b>3.59 - Responses</b><br>N |   |
| <b>3.60 - Question</b><br>Are there any Door Handles and Closures repairs?                                  | <b>3.60 - Responses</b><br>N |   |
| <b>3.61 - Question</b><br>Are there any Drying Areas repairs?   | <b>3.61 - Responses</b><br>N |   |
| <b>3.62 - Question</b><br>Are there any Electrical Cupboard Doors repairs?                                  | <b>3.62 - Responses</b><br>N |   |
| <b>3.63 - Question</b><br>Are there any Garage Area repairs?  | <b>3.63 - Responses</b><br>N |   |
| <b>3.64 - Question</b><br>Are there any Graffiti repairs?   | <b>3.64 - Responses</b><br>N |   |
| <b>3.65 - Question</b><br>Are there any Vandalism repairs?  | <b>3.65 - Responses</b><br>N |   |
| <b>3.66 - Question</b><br>Are there any Laundry room repairs?   | <b>3.66 - Responses</b><br>N |   |
| <b>3.67 - Question</b><br>Are there any Flooring repairs?   | <b>3.67 - Responses</b><br>N |   |




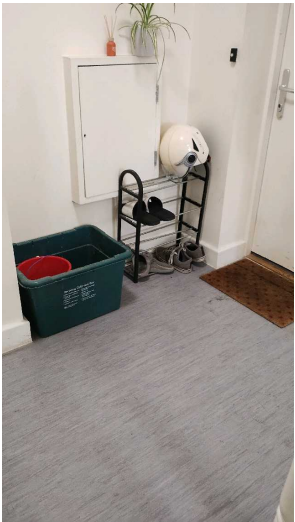
### 4 Block 3

|   |   |  |
|---|---|--|
| <b>4.1 - Question</b><br>Please state the name of the block you are inspecting  | <b>4.1 - Responses</b><br>14-26 Sandalwood Road |  |
| <b>4.2 - Question</b><br>Please confirm you have checked everything at this block?  | <b>4.2 - Responses</b><br>Y                     |  |
| <b>4.3 - Question</b><br>Are there any issues to raise at this block?   | <b>4.3 - Responses</b><br>Y                     |  |
| <b>4.4 - Question</b><br>Are there any Ground Maintenance Issues?   | <b>4.4 - Responses</b><br>Y                     |  |
| <b>4.5 - Question</b><br>Are there Grass Cutting issues?  | <b>4.5 - Responses</b><br>N                     |  |
| <b>4.6 - Question</b><br>Are there Weeding issues?  | <b>4.6 - Responses</b><br>Y                     | <b>4.6 - Comments</b><br>01/08/2025 Prune the overgrown and stubborn weeds in the patio area by rear door. |
| <b>4.7 - Question</b><br>Are there Flower/Shrub Areas issues?   | <b>4.7 - Responses</b><br>N                     |  |
| <b>4.8 - Question</b><br>Are there Trees: Pruning issues?   | <b>4.8 - Responses</b><br>N                     |  |
| <b>4.9 - Question</b><br>Are there Safety – Foliage & Root Problems issues?   | <b>4.9 - Responses</b><br>N                     |  |
| <b>4.10 - Question</b><br>Are there Hedges Trimmed issues?  | <b>4.10 - Responses</b><br>N                    |  |
| <b>4.11 - Question</b><br>Are there any Internal Caretaking issues?   | <b>4.11 - Responses</b><br>N                    |  |
| <b>4.26 - Question</b><br>Are there any External Caretaking issues?   | <b>4.26 - Responses</b><br>Y                    |  |
| <b>4.27 - Question</b><br>Are there any Cleanliness: Grassed Areas issues?  | <b>4.27 - Responses</b><br>N                    |  |
| <b>4.28 - Question</b><br>Are there any Paved Areas issues?   | <b>4.28 - Responses</b><br>N                    |  |
| <b>4.29 - Question</b><br>Are there any Car Parks issues?   | <b>4.29 - Responses</b><br>N                    |  |
| <b>4.30 - Question</b><br>Are there any Play Areas (Cleanliness, condition of play equipment, surfaces and fencing) issues? | <b>4.30 - Responses</b><br>N                    |  |
| <b>4.31 - Question</b><br>Are there any Litter Picking issues?  | <b>4.31 - Responses</b><br>N                    |  |
| <b>4.32 - Question</b><br>Are there any Bin Rooms issues?   | <b>4.32 - Responses</b><br>N                    |  |
| <b>4.33 - Question</b><br>Are there any Bulk Refuse and Graffiti issues?  | <b>4.33 - Responses</b><br>N                    |  |
| <b>4.34 - Question</b><br>Are there any Signs issues?   | <b>4.34 - Responses</b><br>N                    |  |
| <b>4.35 - Question</b><br>Are there any Numberings issues?  | <b>4.35 - Responses</b><br>N                    |  |
| <b>4.36 - Question</b>  | <b>4.36 - Responses</b>                         |  |

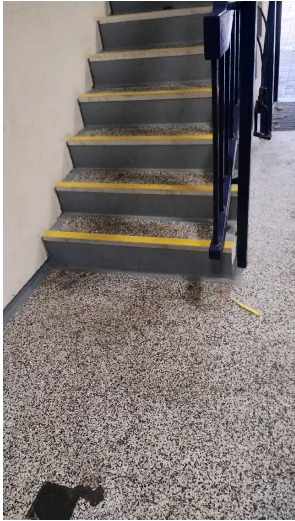


|   |                              |  |
|---|------------------------------|--|
| Are there any Notice Boards issues?   | N                            |  |
| <b>4.37 - Question</b><br>Are there any Communal Issues?                                | <b>4.37 - Responses</b><br>Y |  |
| <b>4.38 - Question</b><br>Are there any Abandoned Vehicles?                             | <b>4.38 - Responses</b><br>N |  |
| <b>4.39 - Question</b><br>Are there any Street Lighting Issues?                         | <b>4.39 - Responses</b><br>N |  |
| <b>4.40 - Question</b><br>Are there any Pot holes?                                      | <b>4.40 - Responses</b><br>N |  |
| <b>4.41 - Question</b><br>Are there any issues with the Cleanliness of roads/car parks? | <b>4.41 - Responses</b><br>N |  |
| <b>4.42 - Question</b><br>Are the notice boards are up to date?                         | <b>4.42 - Responses</b><br>Y |  |
| <b>4.43 - Question</b><br>Is there any old signage to report?                           | <b>4.43 - Responses</b><br>N |  |
| <b>4.44 - Question</b><br>Are there any Items stored in drying areas?                   | <b>4.44 - Responses</b><br>N |  |
| <b>4.45 - Question</b><br>Are there any Items stored in Communal areas?                 | <b>4.45 - Responses</b><br>Y | <b>4.45 - Comments</b><br>01/08/2025 Washing lines in the communal area. |
| <b>Q 4.45 - Photo</b>   |                              |  |
|       |                              |  |
| <b>4.46 - Question</b><br>Is the roof access doors locked?                              | <b>4.46 - Responses</b><br>Y |  |
| <b>4.47 - Question</b><br>Are there any Bulk rubbish items?                             | <b>4.47 - Responses</b><br>N |  |
| <b>4.48 - Question</b><br>Are there any Untidy gardens?                                 | <b>4.48 - Responses</b><br>N |  |
| <b>4.49 - Question</b><br>Are there any Fire Risk Issues?                               | <b>4.49 - Responses</b><br>N |  |
| <b>4.57 - Question</b><br>Are there Communal Repairs to raise?                          | <b>4.57 - Responses</b><br>N |  |

#### 5 Block 4

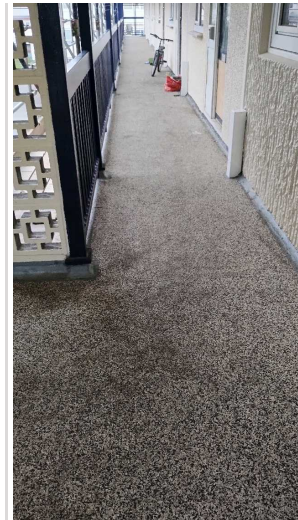
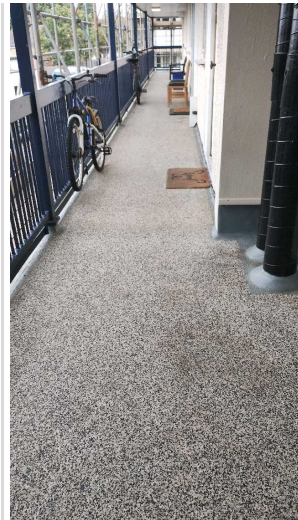
|  |  |  |
|--|--|--|
| <b>5.1 - Question</b><br>Please state the name of the block you are inspecting | <b>5.1 - Responses</b><br>6-9 Mulberry Close |  |
| <b>5.2 - Question</b>  | <b>5.2 - Responses</b>                       |  |

|  |  |  |
|--|--|--|
| Please confirm you have checked everything at this block?  | Y  |  |
| <b>5.3 - Question</b><br>Are there any issues to raise at this block?  | <b>5.3 - Responses</b><br>Y  |  |
| <b>5.4 - Question</b><br>Are there any Ground Maintenance Issues?  | <b>5.4 - Responses</b><br>N  |  |
| <b>5.11 - Question</b><br>Are there any Internal Caretaking issues?  | <b>5.11 - Responses</b><br>N   |  |
| <b>5.26 - Question</b><br>Are there any External Caretaking issues?  | <b>5.26 - Responses</b><br>N   |  |
| <b>5.37 - Question</b><br>Are there any Communal Issues?   | <b>5.37 - Responses</b><br>Y   |  |
| <b>5.38 - Question</b><br>Are there any Abandoned Vehicles?  | <b>5.38 - Responses</b><br>N   |  |
| <b>5.39 - Question</b><br>Are there any Street Lighting Issues?  | <b>5.39 - Responses</b><br>N   |  |
| <b>5.40 - Question</b><br>Are there any Pot holes?   | <b>5.40 - Responses</b><br>N   |  |
| <b>5.41 - Question</b><br>Are there any issues with the Cleanliness of roads/car parks?                      | <b>5.41 - Responses</b><br>N   |  |
| <b>5.42 - Question</b><br>Are the notice boards are up to date?  | <b>5.42 - Responses</b><br>Y   |  |
| <b>5.43 - Question</b><br>Is there any old signage to report?  | <b>5.43 - Responses</b><br>N   |  |
| <b>5.44 - Question</b><br>Are there any Items stored in drying areas?  | <b>5.44 - Responses</b><br>N   |  |
| <b>5.45 - Question</b><br>Are there any Items stored in Communal areas?                                      | <b>5.45 - Responses</b><br>Y   | <b>5.45 - Comments</b><br>01/08/2025 personal items in the communal communal areas . |
| <b>Q 5.45 - Photo</b><br> | <b>Q 5.45 - Photo</b><br> |  |
| <b>5.47 - Question</b><br>Are there any Bulk rubbish items?  | <b>5.47 - Responses</b><br>N   |  |
| <b>5.48 - Question</b><br>Are there any Untidy gardens?  | <b>5.48 - Responses</b><br>N   |  |
| <b>5.49 - Question</b>   | <b>5.49 - Responses</b>  |  |

|  |                              |  |
|--|------------------------------|--|
| Are there any Fire Risk Issues?                                | N                            |  |
| <b>5.57 - Question</b><br>Are there Communal Repairs to raise? | <b>5.57 - Responses</b><br>N |  |

| 6 Block 5  |  |  |
|--|--|--|
| <b>6.1 - Question</b><br>Please state the name of the block you are inspecting                               | <b>6.1 - Responses</b><br>69-102 Sandalwood Road   |  |
| <b>6.2 - Question</b><br>Please confirm you have checked everything at this block?                           | <b>6.2 - Responses</b><br>Y  |  |
| <b>6.3 - Question</b><br>Are there any issues to raise at this block?  | <b>6.3 - Responses</b><br>Y  |  |
| <b>6.4 - Question</b><br>Are there any Ground Maintenance Issues?  | <b>6.4 - Responses</b><br>N  |  |
| <b>6.11 - Question</b><br>Are there any Internal Caretaking issues?  | <b>6.11 - Responses</b><br>N   |  |
| <b>6.26 - Question</b><br>Are there any External Caretaking issues?  | <b>6.26 - Responses</b><br>N   |  |
| <b>6.37 - Question</b><br>Are there any Communal Issues?   | <b>6.37 - Responses</b><br>Y   | <b>6.37 - Comments</b><br>01/08/2025 Scratch marks on newly laid flooring in the block. Filthy floors and stairwell on all floors. |
| <b>Q 6.37 - Photo</b><br> | <b>Q 6.37 - Photo</b><br> | <b>Q 6.37 - Photo</b><br>                     |
| <b>Q 6.37 - Photo</b>  | <b>Q 6.37 - Photo</b>  | <b>Q 6.37 - Photo</b>  |





**Q 6.37 - Photo**



**Q 6.37 - Photo**



**6.38 - Question**

Are there any Abandoned Vehicles?

**6.38 - Responses**

N

**6.39 - Question**

Are there any Street Lighting Issues?

**6.39 - Responses**

N

**6.40 - Question**

Are there any Pot holes?

**6.40 - Responses**

N

**6.41 - Question**

Are there any issues with the Cleanliness of roads/car parks?

**6.41 - Responses**

N

**6.42 - Question**

Are the notice boards are up to date?

**6.42 - Responses**

Y

**6.43 - Question**

Is there any old signage to report?

**6.43 - Responses**

N

**6.44 - Question**

Are there any Items stored in drying areas?



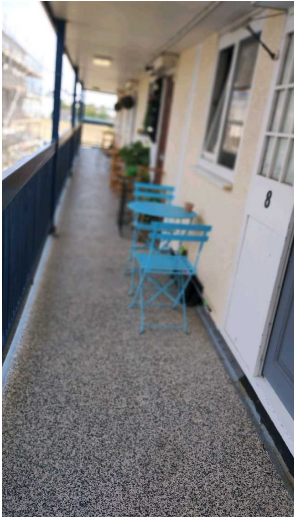
**6.44 - Responses**

Y

**6.44 - Comments**

01/08/2025 Washing machine stored in the drying area.

**Q 6.44 - Photo**

|  |   |  |
|--|---|--|
|                             |   |  |
| <b>6.45 - Question</b><br>Are there any Items stored in Communal areas?                                      | <b>6.45 - Responses</b><br>Y  | <b>6.45 - Comments</b><br>01/08/2025 personal items and washing lines in the communal areas. |
| <b>Q 6.45 - Photo</b><br> | <b>Q 6.45 - Photo</b><br> |  |
| <b>6.46 - Question</b><br>Is the roof access doors locked?   | <b>6.46 - Responses</b><br>Y  |  |
| <b>6.47 - Question</b><br>Are there any Bulk rubbish items?  | <b>6.47 - Responses</b><br>Y  |  |
| <b>6.48 - Question</b><br>Are there any Untidy gardens?  | <b>6.48 - Responses</b><br>N  |  |
| <b>6.49 - Question</b><br>Are there any Fire Risk Issues?  | <b>6.49 - Responses</b><br>N  |  |
| <b>6.57 - Question</b><br>Are there Communal Repairs to raise?   | <b>6.57 - Responses</b><br>N  |  |

### 7 Block 6

|  |  |  |
|--|--|--|
| <b>7.1 - Question</b><br>Please state the name of the block you are inspecting     | <b>7.1 - Responses</b><br>2-18 Pinewood Road |  |
| <b>7.2 - Question</b><br>Please confirm you have checked everything at this block? | <b>7.2 - Responses</b><br>Y                  |  |
| <b>7.3 - Question</b>  | <b>7.3 - Responses</b>                       |  |

|   |                              |   |
|---|------------------------------|---|
| Are there any issues to raise at this block?  | Y                            |   |
| <b>7.4 - Question</b><br>Are there any Ground Maintenance Issues?                       | <b>7.4 - Responses</b><br>N  |   |
| <b>7.11 - Question</b><br>Are there any Internal Caretaking issues?                     | <b>7.11 - Responses</b><br>N |   |
| <b>7.26 - Question</b><br>Are there any External Caretaking issues?                     | <b>7.26 - Responses</b><br>N |   |
| <b>7.37 - Question</b><br>Are there any Communal Issues?                                | <b>7.37 - Responses</b><br>Y |   |
| <b>7.38 - Question</b><br>Are there any Abandoned Vehicles?                             | <b>7.38 - Responses</b><br>N |   |
| <b>7.39 - Question</b><br>Are there any Street Lighting Issues?                         | <b>7.39 - Responses</b><br>N |   |
| <b>7.40 - Question</b><br>Are there any Pot holes?                                      | <b>7.40 - Responses</b><br>N |   |
| <b>7.41 - Question</b><br>Are there any issues with the Cleanliness of roads/car parks? | <b>7.41 - Responses</b><br>Y |   |
| <b>7.42 - Question</b><br>Are the notice boards are up to date?                         | <b>7.42 - Responses</b><br>Y |   |
| <b>7.43 - Question</b><br>Is there any old signage to report?                           | <b>7.43 - Responses</b><br>N |   |
| <b>7.44 - Question</b><br>Are there any Items stored in drying areas?                   | <b>7.44 - Responses</b><br>Y |   |
| <b>7.45 - Question</b><br>Are there any Items stored in Communal areas?                 | <b>7.45 - Responses</b><br>Y |   |
| <b>7.46 - Question</b><br>Is the roof access doors locked?                              | <b>7.46 - Responses</b><br>Y |   |
| <b>7.47 - Question</b><br>Are there any Bulk rubbish items?                             | <b>7.47 - Responses</b><br>N |   |
| <b>7.48 - Question</b><br>Are there any Untidy gardens?                                 | <b>7.48 - Responses</b><br>N |   |
| <b>7.49 - Question</b><br>Are there any Fire Risk Issues?                               | <b>7.49 - Responses</b><br>N |   |
| <b>7.57 - Question</b><br>Are there Communal Repairs to raise?                          | <b>7.57 - Responses</b><br>Y | <b>7.57 - Comments</b><br>01/08/2025 Secure the metal banister in stairwell on top floor. |
| <b>Q 7.57 - Photo</b>   |                              |   |

|  |  |   |
|--|--|---|
|                             |  |   |
| <b>7.58 - Question</b><br>Are there any Communal lighting repairs?   | <b>7.58 - Responses</b><br>N   |   |
| <b>7.59 - Question</b><br>Are there any Window repairs?  | <b>7.59 - Responses</b><br>N   |   |
| <b>7.60 - Question</b><br>Are there any Door Handles and Closures repairs?                                   | <b>7.60 - Responses</b><br>N   |   |
| <b>7.61 - Question</b><br>Are there any Drying Areas repairs?  | <b>7.61 - Responses</b><br>N   |   |
| <b>7.62 - Question</b><br>Are there any Electrical Cupboard Doors repairs?                                   | <b>7.62 - Responses</b><br>N   |   |
| <b>7.63 - Question</b><br>Are there any Garage Area repairs?   | <b>7.63 - Responses</b><br>Y   | <b>7.63 - Comments</b><br>01/08/2025 Anti climb paint to be painted on garages from 99-106 & 114-120. |
| <b>Q 7.63 - Photo</b><br> | <b>Q 7.63 - Photo</b><br> |   |
| <b>7.65 - Question</b><br>Are there any Vandalism repairs?   | <b>7.65 - Responses</b><br>Y   | <b>7.65 - Comments</b><br>01/08/2025 G0 120 Pinewood Road void garages to be boarded.                 |
| <b>Q 7.65 - Photo</b><br> |  |   |

## 8 Block 7

|  |   |  |
|--|---|--|
| <b>8.1 - Question</b><br>Please state the name of the block you are inspecting     | <b>8.1 - Responses</b><br>29-38 Pinewood Road |  |
| <b>8.2 - Question</b><br>Please confirm you have checked everything at this block? | <b>8.2 - Responses</b><br>Y                   |  |

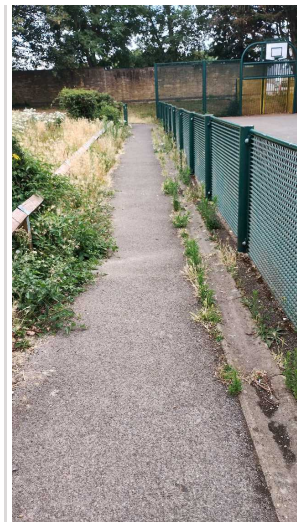
|   |                              |   |
|---|------------------------------|---|
| <b>8.3 - Question</b><br>Are there any issues to raise at this block?                   | <b>8.3 - Responses</b><br>Y  |   |
| <b>8.4 - Question</b><br>Are there any Ground Maintenance Issues?                       | <b>8.4 - Responses</b><br>N  |   |
| <b>8.11 - Question</b><br>Are there any Internal Caretaking issues?                     | <b>8.11 - Responses</b><br>N |   |
| <b>8.26 - Question</b><br>Are there any External Caretaking issues?                     | <b>8.26 - Responses</b><br>N |   |
| <b>8.37 - Question</b><br>Are there any Communal Issues?                                | <b>8.37 - Responses</b><br>Y |   |
| <b>8.38 - Question</b><br>Are there any Abandoned Vehicles?                             | <b>8.38 - Responses</b><br>N |   |
| <b>8.39 - Question</b><br>Are there any Street Lighting Issues?                         | <b>8.39 - Responses</b><br>N |   |
| <b>8.40 - Question</b><br>Are there any Pot holes?                                      | <b>8.40 - Responses</b><br>N |   |
| <b>8.41 - Question</b><br>Are there any issues with the Cleanliness of roads/car parks? | <b>8.41 - Responses</b><br>N |   |
| <b>8.42 - Question</b><br>Are the notice boards are up to date?                         | <b>8.42 - Responses</b><br>Y |   |
| <b>8.43 - Question</b><br>Is there any old signage to report?                           | <b>8.43 - Responses</b><br>N |   |
| <b>8.44 - Question</b><br>Are there any Items stored in drying areas?                   | <b>8.44 - Responses</b><br>N |   |
| <b>8.45 - Question</b><br>Are there any Items stored in Communal areas?                 | <b>8.45 - Responses</b><br>N |   |
| <b>8.46 - Question</b><br>Is the roof access doors locked?                              | <b>8.46 - Responses</b><br>N |   |
| <b>8.47 - Question</b><br>Are there any Bulk rubbish items?                             | <b>8.47 - Responses</b><br>N |   |
| <b>8.48 - Question</b><br>Are there any Untidy gardens?                                 | <b>8.48 - Responses</b><br>N |   |
| <b>8.49 - Question</b><br>Are there any Fire Risk Issues?                               | <b>8.49 - Responses</b><br>N |   |
| <b>8.57 - Question</b><br>Are there Communal Repairs to raise?                          | <b>8.57 - Responses</b><br>Y | <b>8.57 - Comments</b><br>01/08/2025 Replace the missing cover on the waste pipes on 2nd floor. |
| <b>Q 8.57 - Photo</b>   |                              |   |





|  |                              |  |
|--|------------------------------|--|
| <b>8.59 - Question</b><br>Are there any Window repairs?                    | <b>8.59 - Responses</b><br>N |  |
| <b>8.60 - Question</b><br>Are there any Door Handles and Closures repairs? | <b>8.60 - Responses</b><br>N |  |
| <b>8.61 - Question</b><br>Are there any Drying Areas repairs?              | <b>8.61 - Responses</b><br>N |  |
| <b>8.62 - Question</b><br>Are there any Electrical Cupboard Doors repairs? | <b>8.62 - Responses</b><br>N |  |
| <b>8.63 - Question</b><br>Are there any Garage Area repairs?               | <b>8.63 - Responses</b><br>N |  |
| <b>8.64 - Question</b><br>Are there any Graffiti repairs?                  | <b>8.64 - Responses</b><br>N |  |
| <b>8.65 - Question</b><br>Are there any Vandalism repairs?                 | <b>8.65 - Responses</b><br>N |  |
| <b>8.66 - Question</b><br>Are there any Laundry room repairs?              | <b>8.66 - Responses</b><br>N |  |
| <b>8.67 - Question</b><br>Are there any Flooring repairs?                  | <b>8.67 - Responses</b><br>N |  |

| 9 Block 8  |                                     |  |
|--|-------------------------------------|--|
| <b>9.1 - Question</b><br>Please state the name of the block you are inspecting     | <b>9.1 - Responses</b><br>Ball park |  |
| <b>9.2 - Question</b><br>Please confirm you have checked everything at this block? | <b>9.2 - Responses</b><br>Y         |  |
| <b>9.3 - Question</b><br>Are there any issues to raise at this block?              | <b>9.3 - Responses</b><br>Y         |  |
| <b>9.4 - Question</b><br>Are there any Ground Maintenance Issues?                  | <b>9.4 - Responses</b><br>Y         | <b>9.4 - Comments</b><br>01/08/2025 Prune the overgrown shrubs by steps , leading the bal court. |
| <b>Q 9.4 - Photo</b>   | <b>Q 9.4 - Photo</b>                | <b>Q 9.4 - Photo</b>   |
|  |                                     |  |



|   |                              |  |
|---|------------------------------|--|
| <b>9.5 - Question</b><br>Are there Grass Cutting issues?            | <b>9.5 - Responses</b><br>N  |  |
| <b>9.6 - Question</b><br>Are there Weeding issues?                  | <b>9.6 - Responses</b><br>N  |  |
| <b>9.10 - Question</b><br>Are there Hedges Trimmed issues?          | <b>9.10 - Responses</b><br>N |  |
| <b>9.11 - Question</b><br>Are there any Internal Caretaking issues? | <b>9.11 - Responses</b><br>N |  |
| <b>9.26 - Question</b><br>Are there any External Caretaking issues? | <b>9.26 - Responses</b><br>N |  |
| <b>9.37 - Question</b><br>Are there any Communal Issues?            | <b>9.37 - Responses</b><br>N |  |
| <b>9.49 - Question</b><br>Are there any Fire Risk Issues?           | <b>9.49 - Responses</b><br>N |  |
| <b>9.57 - Question</b><br>Are there Communal Repairs to raise?      | <b>9.57 - Responses</b><br>N |  |

### 17 Overall Estate Rating

|   |                              |  |
|---|------------------------------|--|
| <b>17.1 - Question</b><br>Please rate the overall Grounds Maintenance of the estate | <b>17.1 - Responses</b><br>B |  |
| <b>17.2 - Question</b><br>Please rate the overall Internal Caretaking of the estate | <b>17.2 - Responses</b><br>B |  |
| <b>17.3 - Question</b><br>Please rate the overall External Caretaking of the estate | <b>17.3 - Responses</b><br>B |  |
| <b>17.4 - Question</b><br>Please rate the overall Communal Issues of the estate     | <b>17.4 - Responses</b><br>B |  |
| <b>17.5 - Question</b><br>Please rate the overall Fire Risks of the estate          | <b>17.5 - Responses</b><br>B |  |