

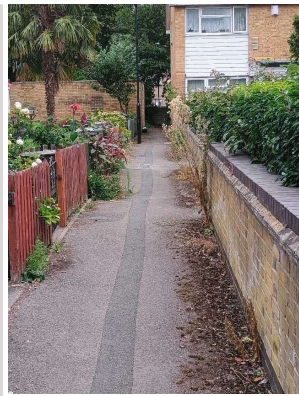
Inspection Report


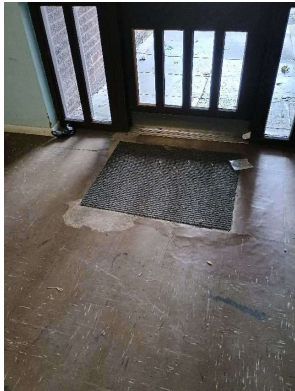
Company Name LB of Hounslow	Scheduled Start Date 19/08/2025	Inspection Completed on 02/09/2025
Location of Inspection Becketts Close (ESTBECK)	Scheduled Time of Inspection 11:36 AM	Inspection Submission Time 2:21 PM
Inspector that undertook inspection Keith Asuncion	Template Used Estate Inspection	PDF Sent to keith.asuncion@hounslow.gov.uk

Inspection Score and Overall Grade		
Actual Score	Max Score	Inspection %
16	20	80
Banding Name Default Banding	Overall Inspection Result Default Banding Item	


1 Inspection Details		
1.1 - Question Type of Inspection	1.1 - Responses Quarterly	
1.2 - Question Area	1.2 - Responses West	
1.3 - Question How many blocks are you inspecting in the estate today?	1.3 - Responses 3	

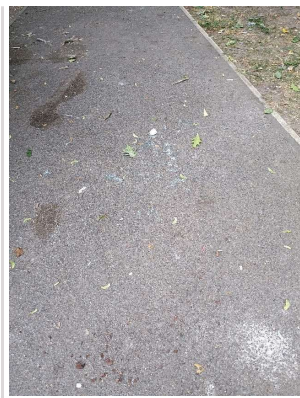
2 Block 1		
2.1 - Question Please state the name of the block you are inspecting	2.1 - Responses 37-56 Becketts Close	
2.2 - Question Please confirm you have checked everything at this block?	2.2 - Responses Y	
2.3 - Question Are there any issues to raise at this block?	2.3 - Responses Y	
2.4 - Question Are there any Ground Maintenance Issues?	2.4 - Responses Y	
2.5 - Question Are there Grass Cutting issues?	2.5 - Responses N	
2.6 - Question Are there Weeding issues?	2.6 - Responses Y	
Q 2.6 - Photo		






2.7 - Question Are there Flower/Shrub Areas issues?	2.7 - Responses N	
2.8 - Question Are there Trees: Pruning issues?	2.8 - Responses N	
2.9 - Question Are there Safety – Foliage & Root Problems issues?	2.9 - Responses N	
2.10 - Question Are there Hedges Trimmed issues?	2.10 - Responses N	
2.11 - Question Are there any Internal Caretaking issues?	2.11 - Responses Y	
2.12 - Question Are there any Cleanliness: Stairs issues?	2.12 - Responses N	
2.13 - Question Are there any Landings issues?	2.13 - Responses Y	
2.14 - Question Are there any Entrances issues?	2.14 - Responses Y	2.14 - Comments 19/08/2025 Entrance needs to be swept.
Q 2.14 - Photo 	Q 2.14 - Photo 	
2.15 - Question Are there any Lifts issues?	2.15 - Responses N	
2.16 - Question Are there any Door and Window Glazing issues?	2.16 - Responses N	
2.17 - Question Are there any Ledges issues?	2.17 - Responses N	
2.18 - Question Are there any Walls issues?	2.18 - Responses Y	2.18 - Comments 19/08/2025 Graffiti on stairway walls.
Q 2.18 - Photo		



2.19 - Question Are there any Lighting issues?	2.19 - Responses N	
2.20 - Question Are there any Handrails secure issues?	2.20 - Responses N	
2.21 - Question Are there any Chute Rooms issues?	2.21 - Responses N	
2.22 - Question Are there any Signage issues?	2.22 - Responses N	
2.23 - Question Are there any Graffiti issues?	2.23 - Responses Y	
Q 2.23 - Photo 		
2.24 - Question Are there any issues with cleaning completion sheets?	2.24 - Responses N	
2.25 - Question Are there any issues with Notice Boards?	2.25 - Responses N	
2.26 - Question Are there any External Caretaking issues?	2.26 - Responses Y	
2.27 - Question Are there any Cleanliness: Grassed Areas issues?	2.27 - Responses N	
2.28 - Question Are there any Paved Areas issues?	2.28 - Responses Y	2.28 - Comments 19/08/2025 Broken glass on pavement next to bin shed room.
Q 2.28 - Photo		

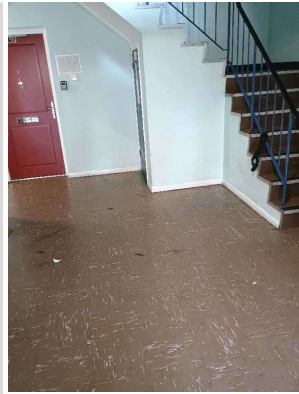


2.29 - Question Are there any Car Parks issues?	2.29 - Responses N	
2.30 - Question Are there any Play Areas (Cleanliness, condition of play equipment, surfaces and fencing) issues?	2.30 - Responses N	
2.31 - Question Are there any Litter Picking issues?	2.31 - Responses N	
2.32 - Question Are there any Bin Rooms issues?	2.32 - Responses N	
2.33 - Question Are there any Bulk Refuse and Graffiti issues?	2.33 - Responses N	
2.34 - Question Are there any Signs issues?	2.34 - Responses N	
2.35 - Question Are there any Numberings issues?	2.35 - Responses N	
2.36 - Question Are there any Notice Boards issues?	2.36 - Responses N	
2.37 - Question Are there any Communal Issues?	2.37 - Responses Y	2.37 - Comments 19/08/2025 Roof above front communal door needs to be cleaned.
Q 2.37 - Photo 		
2.38 - Question Are there any Abandoned Vehicles?	2.38 - Responses N	
2.39 - Question Are there any Street Lighting Issues?	2.39 - Responses N	
2.40 - Question Are there any Pot holes?	2.40 - Responses N	
2.41 - Question Are there any issues with the Cleanliness of roads/car parks?	2.41 - Responses N	
2.42 - Question Are the notice boards are up to date?	2.42 - Responses Y	
2.43 - Question Is there any old signage to report?	2.43 - Responses N	
2.44 - Question	2.44 - Responses N	

Are there any Items stored in drying areas?		
2.45 - Question Are there any Items stored in Communal areas?	2.45 - Responses Y	
Q 2.45 - Photo 	Q 2.45 - Photo 	
2.46 - Question Is the roof access doors locked?	2.46 - Responses Y	
2.47 - Question Are there any Bulk rubbish items?	2.47 - Responses N	
2.48 - Question Are there any Untidy gardens?	2.48 - Responses N	
2.49 - Question Are there any Fire Risk Issues?	2.49 - Responses N	
2.57 - Question Are there Communal Repairs to raise?	2.57 - Responses N	

3 Block 2

3.1 - Question Please state the name of the block you are inspecting	3.1 - Responses 57-76 Becketts Close	
3.2 - Question Please confirm you have checked everything at this block?	3.2 - Responses Y	
3.3 - Question Are there any issues to raise at this block?	3.3 - Responses Y	
3.4 - Question Are there any Ground Maintenance Issues?	3.4 - Responses N	
3.11 - Question Are there any Internal Caretaking issues?	3.11 - Responses Y	
3.12 - Question Are there any Cleanliness: Stairs issues?	3.12 - Responses N	
3.13 - Question Are there any Landings issues?	3.13 - Responses N	
3.14 - Question Are there any Entrances issues?	3.14 - Responses Y	3.14 - Comments 19/08/2025 Entrance needs to be swept.
Q 3.14 - Photo		




3.15 - Question Are there any Lifts issues?	3.15 - Responses N	
3.16 - Question Are there any Door and Window Glazing issues?	3.16 - Responses N	
3.17 - Question Are there any Ledges issues?	3.17 - Responses N	
3.18 - Question Are there any Walls issues?	3.18 - Responses N	
3.19 - Question Are there any Lighting issues?	3.19 - Responses N	
3.20 - Question Are there any Handrails secure issues?	3.20 - Responses N	
3.21 - Question Are there any Chute Rooms issues?	3.21 - Responses N	
3.22 - Question Are there any Signage issues?	3.22 - Responses N	
3.23 - Question Are there any Graffiti issues?	3.23 - Responses N	
3.24 - Question Are there any issues with cleaning completion sheets?	3.24 - Responses N	
3.25 - Question Are there any issues with Notice Boards?	3.25 - Responses N	
3.26 - Question Are there any External Caretaking issues?	3.26 - Responses N	
3.37 - Question Are there any Communal Issues?	3.37 - Responses N	
3.49 - Question Are there any Fire Risk Issues?	3.49 - Responses N	
3.57 - Question Are there Communal Repairs to raise?	3.57 - Responses Y	3.57 - Comments 19/08/2025 Water tap in front of block is leaking.
Q 3.57 - Photo		



3.58 - Question Are there any Communal lighting repairs?	3.58 - Responses N	
3.59 - Question Are there any Window repairs?	3.59 - Responses N	
3.60 - Question Are there any Door Handles and Closures repairs?	3.60 - Responses N	
3.61 - Question Are there any Drying Areas repairs?	3.61 - Responses N	
3.62 - Question Are there any Electrical Cupboard Doors repairs?	3.62 - Responses N	
3.63 - Question Are there any Garage Area repairs?	3.63 - Responses N	
3.64 - Question Are there any Graffiti repairs?	3.64 - Responses N	
3.65 - Question Are there any Vandalism repairs?	3.65 - Responses N	
3.66 - Question Are there any Laundry room repairs?	3.66 - Responses N	
3.67 - Question Are there any Flooring repairs?	3.67 - Responses N	

4 Block 3

4.1 - Question Please state the name of the block you are inspecting	4.1 - Responses Lavender Court	
4.2 - Question Please confirm you have checked everything at this block?	4.2 - Responses Y	
4.3 - Question Are there any issues to raise at this block?	4.3 - Responses Y	
4.4 - Question Are there any Ground Maintenance Issues?	4.4 - Responses Y	4.4 - Comments 19/08/2025 Lower branch above pavement needs cutting back. In front of Lavender Court.
4.5 - Question Are there Grass Cutting issues?	4.5 - Responses N	
4.6 - Question Are there Weeding issues?	4.6 - Responses N	
4.7 - Question Are there Flower/Shrub Areas issues?	4.7 - Responses N	

4.8 - Question Are there Trees: Pruning issues?	4.8 - Responses Y	4.8 - Comments 19/08/2025 Lower branch of tree (above pavement) needs cutting back. In front of Lavender Court.
Q 4.8 - Photo 		
4.9 - Question Are there Safety – Foliage & Root Problems issues?	4.9 - Responses N	
4.10 - Question Are there Hedges Trimmed issues?	4.10 - Responses N	
4.11 - Question Are there any Internal Caretaking issues?	4.11 - Responses N	
4.26 - Question Are there any External Caretaking issues?	4.26 - Responses N	
4.37 - Question Are there any Communal Issues?	4.37 - Responses N	
4.49 - Question Are there any Fire Risk Issues?	4.49 - Responses N	
4.57 - Question Are there Communal Repairs to raise?	4.57 - Responses N	

17 Overall Estate Rating		
17.1 - Question Please rate the overall Grounds Maintenance of the estate	17.1 - Responses B	
17.2 - Question Please rate the overall Internal Caretaking of the estate	17.2 - Responses B	
17.3 - Question Please rate the overall External Caretaking of the estate	17.3 - Responses B	
17.4 - Question Please rate the overall Communal Issues of the estate	17.4 - Responses B	
17.5 - Question Please rate the overall Fire Risks of the estate	17.5 - Responses A	