

Inspection Report

Company Name LB of Hounslow	Scheduled Start Date 03/09/2025	Inspection Completed on 03/09/2025
Location of Inspection Hatchett Road (ESTHATC)	Scheduled Time of Inspection 2:34 PM	Inspection Submission Time 3:58 PM
Inspector that undertook inspection Keith Asuncion	Template Used Estate Inspection	PDF Sent to keith.asuncion@hounslow.gov.uk

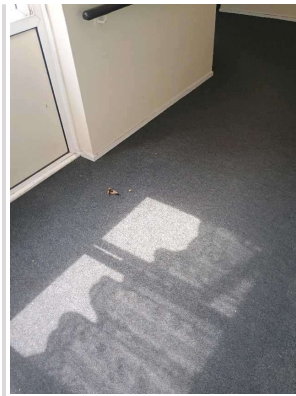
Inspection Score and Overall Grade		
Actual Score	Max Score	Inspection %
15	20	75
Banding Name Default Banding	Overall Inspection Result Default Banding Item	

1 Inspection Details		
1.1 - Question Type of Inspection	1.1 - Responses Quarterly	
1.2 - Question Area	1.2 - Responses West	
1.3 - Question How many blocks are you inspecting in the estate today?	1.3 - Responses 8	

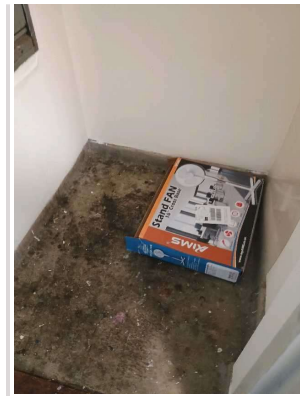
2 Block 1		
2.1 - Question Please state the name of the block you are inspecting	2.1 - Responses 1-33 Hatchett Road	
2.2 - Question Please confirm you have checked everything at this block?	2.2 - Responses Y	
2.3 - Question Are there any issues to raise at this block?	2.3 - Responses Y	
2.4 - Question Are there any Ground Maintenance Issues?	2.4 - Responses N	
2.11 - Question Are there any Internal Caretaking issues?	2.11 - Responses Y	2.11 - Comments 03/09/2025 Communal areas in need of sweeping/vacuuming.
Q 2.11 - Photo	Q 2.11 - Photo	Q 2.11 - Photo



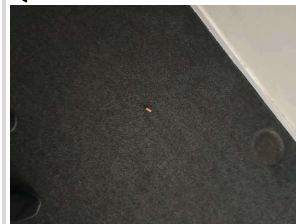
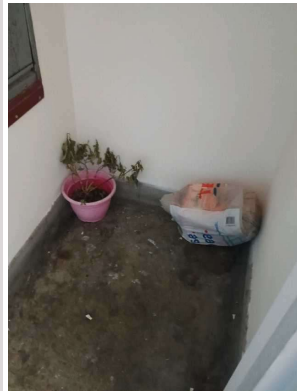
Q 2.11 - Photo



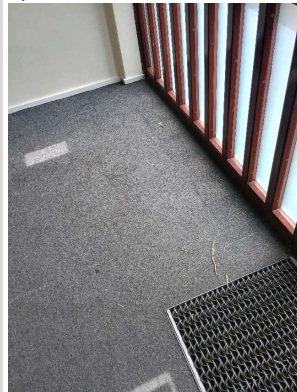
Q 2.11 - Photo



Q 2.11 - Photo



Q 2.11 - Photo



2.12 - Question
Are there any Cleanliness: Stairs issues?

2.12 - Responses
Y

2.13 - Question
Are there any Landings issues?

2.13 - Responses
Y

2.14 - Question
Are there any Entrances issues?

2.14 - Responses
Y

2.15 - Question
Are there any Lifts issues?

2.15 - Responses
N

2.16 - Question
Are there any Door and Window Glazing issues?

2.16 - Responses
N

2.17 - Question
Are there any Ledges issues?

2.17 - Responses
N


2.18 - Question
Are there any Walls issues?

2.18 - Responses
N

2.19 - Question
Are there any Lighting issues?


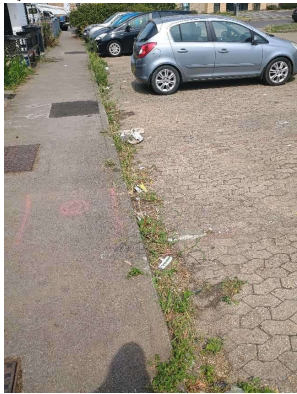

2.19 - Responses
N

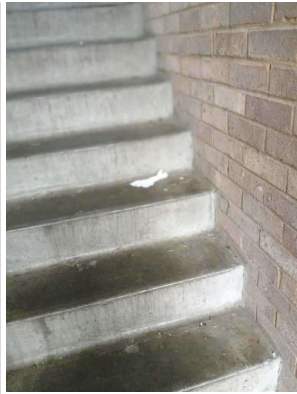
2.20 - Question Are there any Handrails secure issues?	2.20 - Responses N	
2.21 - Question Are there any Chute Rooms issues?	2.21 - Responses N	
2.22 - Question Are there any Signage issues?	2.22 - Responses N	
2.23 - Question Are there any Graffiti issues?	2.23 - Responses N	
2.24 - Question Are there any issues with cleaning completion sheets?	2.24 - Responses N	
2.25 - Question Are there any issues with Notice Boards?	2.25 - Responses N	
2.26 - Question Are there any External Caretaking issues?	2.26 - Responses N	
2.37 - Question Are there any Communal Issues?	2.37 - Responses Y	
2.38 - Question Are there any Abandoned Vehicles?	2.38 - Responses N	
2.39 - Question Are there any Street Lighting Issues?	2.39 - Responses N	
2.40 - Question Are there any Pot holes?	2.40 - Responses N	
2.41 - Question Are there any issues with the Cleanliness of roads/car parks?	2.41 - Responses N	
2.42 - Question Are the notice boards are up to date?	2.42 - Responses Y	
2.43 - Question Is there any old signage to report?	2.43 - Responses N	
2.44 - Question Are there any Items stored in drying areas?	2.44 - Responses N	
2.45 - Question Are there any Items stored in Communal areas?	2.45 - Responses N	
2.46 - Question Is the roof access doors locked?	2.46 - Responses Y	
2.47 - Question Are there any Bulk rubbish items?	2.47 - Responses Y	
Q 2.47 - Photo		
		
2.48 - Question Are there any Untidy gardens?	2.48 - Responses N	

2.49 - Question Are there any Fire Risk Issues?	2.49 - Responses N	
2.57 - Question Are there Communal Repairs to raise?	2.57 - Responses Y	
2.58 - Question Are there any Communal lighting repairs?	2.58 - Responses N	
2.59 - Question Are there any Window repairs?	2.59 - Responses N	
2.60 - Question Are there any Door Handles and Closures repairs?	2.60 - Responses N	
2.61 - Question Are there any Drying Areas repairs?	2.61 - Responses N	
2.62 - Question Are there any Electrical Cupboard Doors repairs?	2.62 - Responses N	
2.63 - Question Are there any Garage Area repairs?	2.63 - Responses N	
2.64 - Question Are there any Graffiti repairs?	2.64 - Responses N	
2.65 - Question Are there any Vandalism repairs?	2.65 - Responses Y	2.65 - Comments 03/09/2025 Trellis on back garden fence needs replacement.
Q 2.65 - Photo 		
2.66 - Question Are there any Laundry room repairs?	2.66 - Responses N	
2.67 - Question Are there any Flooring repairs?	2.67 - Responses N	

3 Block 2

3.1 - Question Please state the name of the block you are inspecting	3.1 - Responses 165-176 Field Road	
3.2 - Question Please confirm you have checked everything at this block?	3.2 - Responses Y	
3.3 - Question Are there any issues to raise at this block?	3.3 - Responses Y	
3.4 - Question Are there any Ground Maintenance Issues?	3.4 - Responses Y	3.4 - Comments 03/09/2025 Residents request tree in front of block be trimmed back or

		removed as it scratches vehicles parked next to it.
Q 3.4 - Photo 		
3.5 - Question Are there Grass Cutting issues?	3.5 - Responses N	
3.6 - Question Are there Weeding issues?	3.6 - Responses Y	3.6 - Comments 03/09/2025 Car parks need weeding.
Q 3.6 - Photo 		
3.7 - Question Are there Flower/Shrub Areas issues?	3.7 - Responses N	
3.9 - Question Are there Safety – Foliage & Root Problems issues?	3.9 - Responses N	
3.10 - Question Are there Hedges Trimmed issues?	3.10 - Responses N	
3.11 - Question Are there any Internal Caretaking issues?	3.11 - Responses Y	
3.12 - Question Are there any Cleanliness: Stairs issues?	3.12 - Responses Y	3.12 - Comments 03/09/2025 Stairs in need of sweeping.
Q 3.12 - Photo 		





3.13 - Question Are there any Landings issues?	3.13 - Responses N	
3.14 - Question Are there any Entrances issues?	3.14 - Responses N	
3.15 - Question Are there any Lifts issues?	3.15 - Responses N	
3.16 - Question Are there any Door and Window Glazing issues?	3.16 - Responses N	
3.17 - Question Are there any Ledges issues?	3.17 - Responses N	
3.18 - Question Are there any Walls issues?	3.18 - Responses N	
3.19 - Question Are there any Lighting issues?	3.19 - Responses N	
3.20 - Question Are there any Handrails secure issues?	3.20 - Responses N	
3.21 - Question Are there any Chute Rooms issues?	3.21 - Responses N	
3.22 - Question Are there any Signage issues?	3.22 - Responses N	
3.23 - Question Are there any Graffiti issues?	3.23 - Responses N	
3.24 - Question Are there any issues with cleaning completion sheets?	3.24 - Responses N	
3.25 - Question Are there any issues with Notice Boards?	3.25 - Responses N	
3.26 - Question Are there any External Caretaking issues?	3.26 - Responses N	
3.37 - Question Are there any Communal Issues?	3.37 - Responses Y	
3.38 - Question Are there any Abandoned Vehicles?	3.38 - Responses N	
3.39 - Question Are there any Street Lighting Issues?	3.39 - Responses N	
3.40 - Question Are there any Pot holes?	3.40 - Responses N	
3.41 - Question Are there any issues with the Cleanliness of roads/car parks?	3.41 - Responses Y	3.41 - Comments 03/09/2025 Car parks need weeding
3.42 - Question Are the notice boards are up to date?	3.42 - Responses Y	

3.43 - Question Is there any old signage to report?	3.43 - Responses Y	3.43 - Comments 03/09/2025 Missing Disabled Bay signage needs to be replaced.
Q 3.43 - Photo 		
3.44 - Question Are there any Items stored in drying areas?	3.44 - Responses N	
3.45 - Question Are there any Items stored in Communal areas?	3.45 - Responses Y	
Q 3.45 - Photo 		
3.46 - Question Is the roof access doors locked?	3.46 - Responses Y	
3.47 - Question Are there any Bulk rubbish items?	3.47 - Responses N	
3.48 - Question Are there any Untidy gardens?	3.48 - Responses Y	3.48 - Comments 03/09/2025 157 Hatchett Road is an abandoned, derelict property. Possible squatters in property.
Q 3.48 - Photo 	Q 3.48 - Photo 	Q 3.48 - Photo 

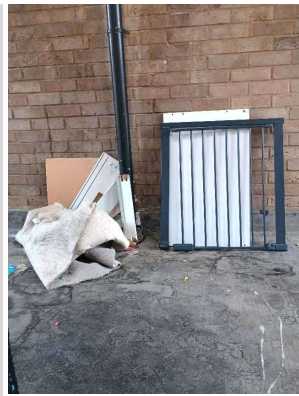
3.49 - Question Are there any Fire Risk Issues?	3.49 - Responses N	
3.57 - Question Are there Communal Repairs to raise?	3.57 - Responses N	

4 Block 3

4.1 - Question Please state the name of the block you are inspecting	4.1 - Responses 143-150 Hatchett Road	
4.2 - Question Please confirm you have checked everything at this block?	4.2 - Responses Y	
4.3 - Question Are there any issues to raise at this block?	4.3 - Responses Y	
4.4 - Question Are there any Ground Maintenance Issues?	4.4 - Responses N	
4.11 - Question Are there any Internal Caretaking issues?	4.11 - Responses Y	
4.12 - Question Are there any Cleanliness: Stairs issues?	4.12 - Responses Y	4.12 - Comments 03/09/2025 Stairs in need of sweeping.
4.13 - Question Are there any Landings issues?	4.13 - Responses Y	4.13 - Comments 03/09/2025 Landings in need of sweeping.
4.14 - Question Are there any Entrances issues?	4.14 - Responses Y	4.14 - Comments 03/09/2025 Door entry system not working, reported to Alphatrack.
4.15 - Question Are there any Lifts issues?	4.15 - Responses N	
4.16 - Question Are there any Door and Window Glazing issues?	4.16 - Responses N	
4.17 - Question Are there any Ledges issues?	4.17 - Responses N	
4.18 - Question Are there any Walls issues?	4.18 - Responses N	
4.19 - Question Are there any Lighting issues?	4.19 - Responses N	
4.20 - Question Are there any Handrails secure issues?	4.20 - Responses N	
4.21 - Question Are there any Chute Rooms issues?	4.21 - Responses N	
4.22 - Question Are there any Signage issues?	4.22 - Responses N	
4.23 - Question Are there any Graffiti issues?	4.23 - Responses N	
4.24 - Question Are there any issues with cleaning completion sheets?	4.24 - Responses N	
4.25 - Question Are there any issues with Notice Boards?	4.25 - Responses N	
4.26 - Question	4.26 - Responses Y	4.26 - Comments

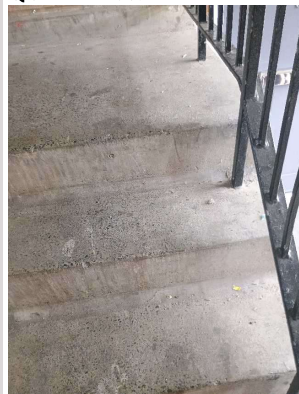
Are there any External Caretaking issues?		03/09/2025 Litter picking needed outside the block and around the Metrostors area.
Q 4.26 - Photo 	Q 4.26 - Photo 	Q 4.26 - Photo 
4.27 - Question Are there any Cleanliness: Grassed Areas issues?	4.27 - Responses Y	4.27 - Comments 03/09/2025 Litter picking needed on grass areas.
4.28 - Question Are there any Paved Areas issues?	4.28 - Responses N	
4.29 - Question Are there any Car Parks issues?	4.29 - Responses Y	4.29 - Comments 03/09/2025 All car parks need weeding.
4.30 - Question Are there any Play Areas (Cleanliness, condition of play equipment, surfaces and fencing) issues?	4.30 - Responses Y	4.30 - Comments 03/09/2025 Flooring in play area ripped.
Q 4.30 - Photo 		
4.31 - Question Are there any Litter Picking issues?	4.31 - Responses Y	
4.32 - Question Are there any Bin Rooms issues?	4.32 - Responses Y	4.32 - Comments 03/09/2025 Residents have complained about bins not being put back in a timely manner once the bin men have collected them. Residents claim the bins are kept out for a couple days.
4.33 - Question Are there any Bulk Refuse and Graffiti issues?	4.33 - Responses N	
4.34 - Question Are there any Signs issues?	4.34 - Responses N	
4.35 - Question Are there any Numberings issues?	4.35 - Responses N	
4.36 - Question	4.36 - Responses	

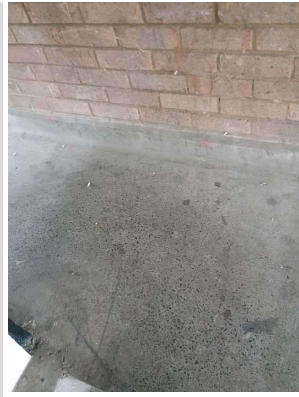
Are there any Notice Boards issues?	N	
4.37 - Question Are there any Communal Issues?	4.37 - Responses Y	
4.38 - Question Are there any Abandoned Vehicles?	4.38 - Responses N	
4.39 - Question Are there any Street Lighting Issues?	4.39 - Responses N	
4.40 - Question Are there any Pot holes?	4.40 - Responses N	
4.41 - Question Are there any issues with the Cleanliness of roads/car parks?	4.41 - Responses N	
4.42 - Question Are the notice boards are up to date?	4.42 - Responses Y	
4.43 - Question Is there any old signage to report?	4.43 - Responses N	
4.44 - Question Are there any Items stored in drying areas?	4.44 - Responses Y	
Q 4.44 - Photo 	Q 4.44 - Photo 	Q 4.44 - Photo 
4.45 - Question Are there any Items stored in Communal areas?	4.45 - Responses Y	
Q 4.45 - Photo 	Q 4.45 - Photo 	
4.46 - Question Is the roof access doors locked?	4.46 - Responses Y	
4.47 - Question Are there any Bulk rubbish items?	4.47 - Responses Y	
Q 4.47 - Photo		



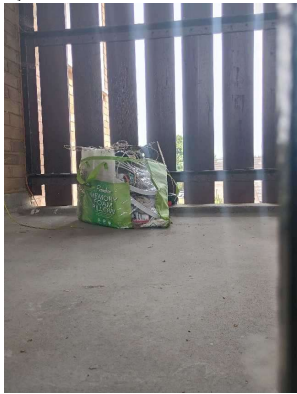


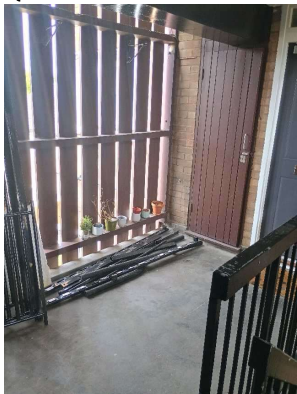
4.48 - Question Are there any Untidy gardens?	4.48 - Responses N	
4.49 - Question Are there any Fire Risk Issues?	4.49 - Responses N	
4.57 - Question Are there Communal Repairs to raise?	4.57 - Responses N	

5 Block 4

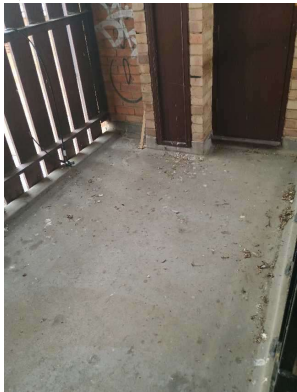
5.1 - Question Please state the name of the block you are inspecting	5.1 - Responses 115-122 Hatchett Road	
5.2 - Question Please confirm you have checked everything at this block?	5.2 - Responses Y	
5.3 - Question Are there any issues to raise at this block?	5.3 - Responses Y	
5.4 - Question Are there any Ground Maintenance Issues?	5.4 - Responses N	
5.11 - Question Are there any Internal Caretaking issues?	5.11 - Responses Y	
5.12 - Question Are there any Cleanliness: Stairs issues?	5.12 - Responses Y	5.12 - Comments 03/09/2025 Stairs in need of sweeping.
Q 5.12 - Photo 		
5.13 - Question Are there any Landings issues?	5.13 - Responses Y	5.13 - Comments 03/09/2025 Landings in need of sweeping.
Q 5.13 - Photo		




5.14 - Question Are there any Entrances issues?	5.14 - Responses Y	5.14 - Comments 03/09/2025 Back entrance door frame is loose on the bottom.
5.15 - Question Are there any Lifts issues?	5.15 - Responses N	
5.16 - Question Are there any Door and Window Glazing issues?	5.16 - Responses N	
5.17 - Question Are there any Ledges issues?	5.17 - Responses N	
5.18 - Question Are there any Walls issues?	5.18 - Responses N	
5.19 - Question Are there any Lighting issues?	5.19 - Responses N	
5.20 - Question Are there any Handrails secure issues?	5.20 - Responses N	
5.21 - Question Are there any Chute Rooms issues?	5.21 - Responses N	
5.22 - Question Are there any Signage issues?	5.22 - Responses N	
5.23 - Question Are there any Graffiti issues?	5.23 - Responses N	
5.24 - Question Are there any issues with cleaning completion sheets?	5.24 - Responses N	
5.25 - Question Are there any issues with Notice Boards?	5.25 - Responses N	
5.26 - Question Are there any External Caretaking issues?	5.26 - Responses N	
5.37 - Question Are there any Communal Issues?	5.37 - Responses Y	
5.38 - Question Are there any Abandoned Vehicles?	5.38 - Responses N	
5.39 - Question Are there any Street Lighting Issues?	5.39 - Responses N	
5.40 - Question Are there any Pot holes?	5.40 - Responses N	
5.41 - Question Are there any issues with the Cleanliness of roads/car parks?	5.41 - Responses N	
5.42 - Question Are the notice boards are up to date?	5.42 - Responses Y	
5.43 - Question	5.43 - Responses	


Is there any old signage to report?	N	
5.44 - Question Are there any Items stored in drying areas?	5.44 - Responses N	
5.45 - Question Are there any Items stored in Communal areas?	5.45 - Responses Y	
Q 5.45 - Photo 	Q 5.45 - Photo 	Q 5.45 - Photo 
Q 5.45 - Photo 		
5.46 - Question Is the roof access doors locked?	5.46 - Responses Y	
5.47 - Question Are there any Bulk rubbish items?	5.47 - Responses N	
5.48 - Question Are there any Untidy gardens?	5.48 - Responses N	
5.49 - Question Are there any Fire Risk Issues?	5.49 - Responses N	
5.57 - Question Are there Communal Repairs to raise?	5.57 - Responses N	

6 Block 5		
6.1 - Question Please state the name of the block you are inspecting	6.1 - Responses 92-99 Hatchett Road	
6.2 - Question Please confirm you have checked everything at this block?	6.2 - Responses Y	
6.3 - Question Are there any issues to raise at this block?	6.3 - Responses Y	
6.4 - Question	6.4 - Responses	


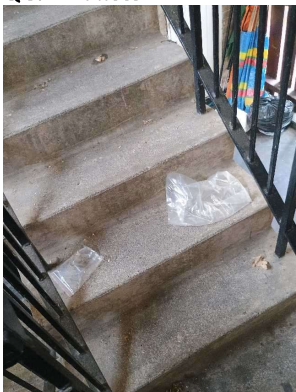

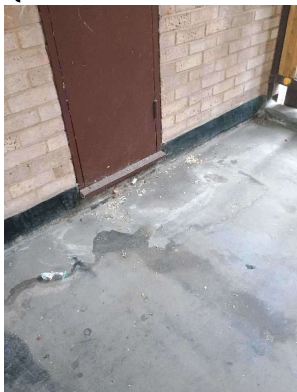
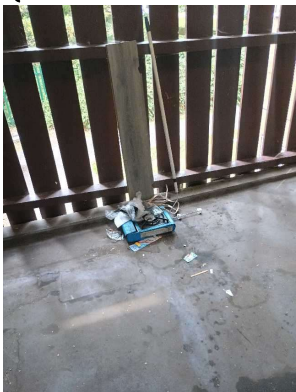
Are there any Ground Maintenance Issues?	N	
6.11 - Question Are there any Internal Caretaking issues?	6.11 - Responses Y	
6.12 - Question Are there any Cleanliness: Stairs issues?	6.12 - Responses N	
6.13 - Question Are there any Landings issues?	6.13 - Responses Y	6.13 - Comments 03/09/2025 Top floor landing needs cleaning.
Q 6.13 - Photo 		
6.14 - Question Are there any Entrances issues?	6.14 - Responses N	
6.15 - Question Are there any Lifts issues?	6.15 - Responses N	
6.16 - Question Are there any Door and Window Glazing issues?	6.16 - Responses N	
6.17 - Question Are there any Ledges issues?	6.17 - Responses N	
6.18 - Question Are there any Walls issues?	6.18 - Responses N	
6.19 - Question Are there any Lighting issues?	6.19 - Responses N	
6.20 - Question Are there any Handrails secure issues?	6.20 - Responses N	
6.21 - Question Are there any Chute Rooms issues?	6.21 - Responses N	
6.22 - Question Are there any Signage issues?	6.22 - Responses N	
6.23 - Question Are there any Graffiti issues?	6.23 - Responses Y	6.23 - Comments 03/09/2025 There's some graffiti on top floor drying area.
6.24 - Question Are there any issues with cleaning completion sheets?	6.24 - Responses N	
6.25 - Question Are there any issues with Notice Boards?	6.25 - Responses N	
6.26 - Question Are there any External Caretaking issues?	6.26 - Responses N	
6.37 - Question Are there any Communal Issues?	6.37 - Responses N	





6.49 - Question Are there any Fire Risk Issues?	6.49 - Responses N	
6.57 - Question Are there Communal Repairs to raise?	6.57 - Responses N	

7 Block 6		
7.1 - Question Please state the name of the block you are inspecting	7.1 - Responses Block 70-81 Hatchett Road	
7.2 - Question Please confirm you have checked everything at this block?	7.2 - Responses Y	
7.3 - Question Are there any issues to raise at this block?	7.3 - Responses Y	
7.4 - Question Are there any Ground Maintenance Issues?	7.4 - Responses Y	
7.5 - Question Are there Grass Cutting issues?	7.5 - Responses N	
7.6 - Question Are there Weeding issues?	7.6 - Responses Y	7.6 - Comments 03/09/2025 Car park needs weeding.
7.7 - Question Are there Flower/Shrub Areas issues?	7.7 - Responses Y	7.7 - Comments 03/09/2025 Shrubs near 82 Hatchett Road need cutting back.
Q 7.7 - Photo 		
7.8 - Question Are there Trees: Pruning issues?	7.8 - Responses N	
7.9 - Question Are there Safety – Foliage & Root Problems issues?	7.9 - Responses N	
7.10 - Question Are there Hedges Trimmed issues?	7.10 - Responses Y	
7.11 - Question Are there any Internal Caretaking issues?	7.11 - Responses N	
7.26 - Question Are there any External Caretaking issues?	7.26 - Responses N	
7.37 - Question Are there any Communal Issues?	7.37 - Responses Y	
7.38 - Question Are there any Abandoned Vehicles?	7.38 - Responses N	
7.39 - Question	7.39 - Responses	

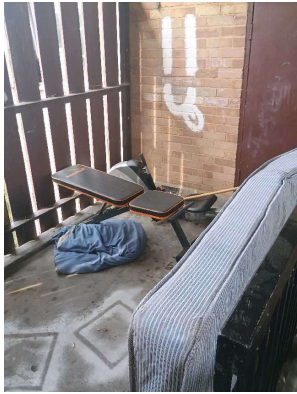



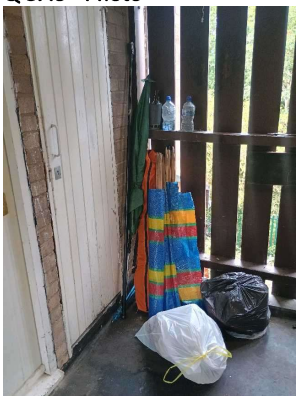
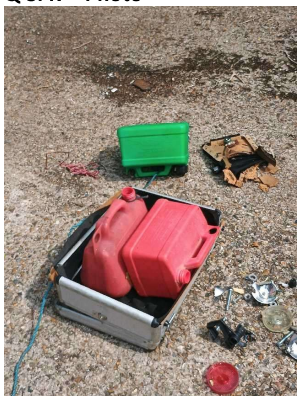

Are there any Street Lighting Issues?	N	
7.40 - Question Are there any Pot holes?	7.40 - Responses N	
7.41 - Question Are there any issues with the Cleanliness of roads/car parks?	7.41 - Responses N	
7.42 - Question Are the notice boards are up to date?	7.42 - Responses Y	
7.43 - Question Is there any old signage to report?	7.43 - Responses N	
7.44 - Question Are there any Items stored in drying areas?	7.44 - Responses N	
7.45 - Question Are there any Items stored in Communal areas?	7.45 - Responses N	
7.46 - Question Is the roof access doors locked?	7.46 - Responses Y	
7.47 - Question Are there any Bulk rubbish items?	7.47 - Responses N	
7.48 - Question Are there any Untidy gardens?	7.48 - Responses N	
7.49 - Question Are there any Fire Risk Issues?	7.49 - Responses N	
7.57 - Question Are there Communal Repairs to raise?	7.57 - Responses Y	
7.58 - Question Are there any Communal lighting repairs?	7.58 - Responses N	
7.59 - Question Are there any Window repairs?	7.59 - Responses N	
7.60 - Question Are there any Door Handles and Closures repairs?	7.60 - Responses N	
7.61 - Question Are there any Drying Areas repairs?	7.61 - Responses N	
7.62 - Question Are there any Electrical Cupboard Doors repairs?	7.62 - Responses Y	7.62 - Comments 03/09/2025 Sub-area in front of block needs to be drained and cleaned.
Q 7.62 - Photo 		
7.63 - Question Are there any Garage Area repairs?	7.63 - Responses N	
7.64 - Question Are there any Graffiti repairs?	7.64 - Responses N	

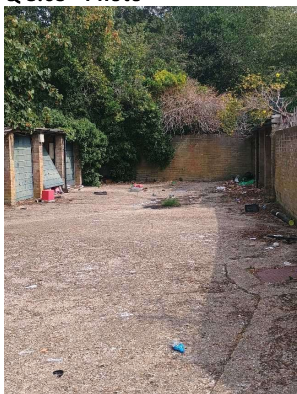
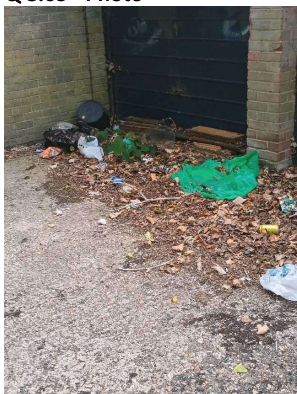

7.65 - Question Are there any Vandalism repairs?	7.65 - Responses N	
7.66 - Question Are there any Laundry room repairs?	7.66 - Responses N	
7.67 - Question Are there any Flooring repairs?	7.67 - Responses N	

8 Block 7		
8.1 - Question Please state the name of the block you are inspecting	8.1 - Responses 54-61 Hatchett Road	
8.2 - Question Please confirm you have checked everything at this block?	8.2 - Responses Y	
8.3 - Question Are there any issues to raise at this block?	8.3 - Responses Y	
8.4 - Question Are there any Ground Maintenance Issues?	8.4 - Responses N	
8.11 - Question Are there any Internal Caretaking issues?	8.11 - Responses Y	8.11 - Comments 03/09/2025 Stairs and landings need to be swept.
8.12 - Question Are there any Cleanliness: Stairs issues?	8.12 - Responses Y	
Q 8.12 - Photo 	Q 8.12 - Photo 	Q 8.12 - Photo 
8.13 - Question Are there any Landings issues?	8.13 - Responses Y	
Q 8.13 - Photo 	Q 8.13 - Photo 	
8.14 - Question Are there any Entrances issues?	8.14 - Responses N	

8.15 - Question Are there any Lifts issues?	8.15 - Responses N	
8.16 - Question Are there any Door and Window Glazing issues?	8.16 - Responses N	
8.17 - Question Are there any Ledges issues?	8.17 - Responses N	
8.18 - Question Are there any Walls issues?	8.18 - Responses N	
8.19 - Question Are there any Lighting issues?	8.19 - Responses N	
8.20 - Question Are there any Handrails secure issues?	8.20 - Responses N	
8.21 - Question Are there any Chute Rooms issues?	8.21 - Responses N	
8.22 - Question Are there any Signage issues?	8.22 - Responses N	
8.23 - Question Are there any Graffiti issues?	8.23 - Responses N	
8.24 - Question Are there any issues with cleaning completion sheets?	8.24 - Responses N	
8.25 - Question Are there any issues with Notice Boards?	8.25 - Responses N	
8.26 - Question Are there any External Caretaking issues?	8.26 - Responses Y	
8.27 - Question Are there any Cleanliness: Grassed Areas issues?	8.27 - Responses Y	
Q 8.27 - Photo 	Q 8.27 - Photo 	Q 8.27 - Photo 
Q 8.27 - Photo 		


8.28 - Question Are there any Paved Areas issues?	8.28 - Responses N	
8.29 - Question Are there any Car Parks issues?	8.29 - Responses N	
8.30 - Question Are there any Play Areas (Cleanliness, condition of play equipment, surfaces and fencing) issues?	8.30 - Responses N	
8.31 - Question Are there any Litter Picking issues?	8.31 - Responses Y	
8.32 - Question Are there any Bin Rooms issues?	8.32 - Responses N	
8.33 - Question Are there any Bulk Refuse and Graffiti issues?	8.33 - Responses Y	8.33 - Comments 03/09/2025 Path behind 62-69 Hatchett Road.
Q 8.33 - Photo 	Q 8.33 - Photo 	Q 8.33 - Photo 
8.34 - Question Are there any Signs issues?	8.34 - Responses N	
8.35 - Question Are there any Numberings issues?	8.35 - Responses N	
8.36 - Question Are there any Notice Boards issues?	8.36 - Responses N	
8.37 - Question Are there any Communal Issues?	8.37 - Responses Y	
8.38 - Question Are there any Abandoned Vehicles?	8.38 - Responses N	
8.39 - Question Are there any Street Lighting Issues?	8.39 - Responses N	
8.40 - Question Are there any Pot holes?	8.40 - Responses N	
8.41 - Question Are there any issues with the Cleanliness of roads/car parks?	8.41 - Responses N	
8.42 - Question Are the notice boards are up to date?	8.42 - Responses Y	
8.43 - Question Is there any old signage to report?	8.43 - Responses N	
8.44 - Question Are there any Items stored in drying areas?	8.44 - Responses Y	
Q 8.44 - Photo	Q 8.44 - Photo	Q 8.44 - Photo

		
8.45 - Question Are there any Items stored in Communal areas?	8.45 - Responses Y	
Q 8.45 - Photo 	Q 8.45 - Photo 	
8.46 - Question Is the roof access doors locked?	8.46 - Responses Y	
8.47 - Question Are there any Bulk rubbish items?	8.47 - Responses Y	8.47 - Comments 03/09/2025 Garage area and on pathway in back of 62-69 Hatchett Road.
Q 8.47 - Photo 	Q 8.47 - Photo 	
8.48 - Question Are there any Untidy gardens?	8.48 - Responses N	
8.49 - Question Are there any Fire Risk Issues?	8.49 - Responses N	
8.57 - Question Are there Communal Repairs to raise?	8.57 - Responses Y	
8.58 - Question Are there any Communal lighting repairs?	8.58 - Responses N	

8.59 - Question Are there any Window repairs?	8.59 - Responses N	
8.60 - Question Are there any Door Handles and Closures repairs?	8.60 - Responses N	
8.61 - Question Are there any Drying Areas repairs?	8.61 - Responses N	
8.62 - Question Are there any Electrical Cupboard Doors repairs?	8.62 - Responses N	
8.63 - Question Are there any Garage Area repairs?	8.63 - Responses Y	8.63 - Comments 03/09/2025 Derelict garage area needs to be taken down. 8.63 - Comments 03/09/2025 Rain gutters need replacement, however, garages are not being used.
Q 8.63 - Photo 	Q 8.63 - Photo 	Q 8.63 - Photo 
8.64 - Question Are there any Graffiti repairs?	8.64 - Responses N	
8.65 - Question Are there any Vandalism repairs?	8.65 - Responses N	
8.66 - Question Are there any Laundry room repairs?	8.66 - Responses N	
8.67 - Question Are there any Flooring repairs?	8.67 - Responses N	

9 Block 8

9.1 - Question Please state the name of the block you are inspecting	9.1 - Responses 41a Hatchett Road	
9.2 - Question Please confirm you have checked everything at this block?	9.2 - Responses Y	
9.3 - Question Are there any issues to raise at this block?	9.3 - Responses Y	
9.4 - Question Are there any Ground Maintenance Issues?	9.4 - Responses N	
9.11 - Question Are there any Internal Caretaking issues?	9.11 - Responses N	
9.26 - Question	9.26 - Responses Y	

Are there any External Caretaking issues?		
9.27 - Question Are there any Cleanliness: Grassed Areas issues?	9.27 - Responses N	
9.28 - Question Are there any Paved Areas issues?	9.28 - Responses N	
9.29 - Question Are there any Car Parks issues?	9.29 - Responses N	
9.30 - Question Are there any Play Areas (Cleanliness, condition of play equipment, surfaces and fencing) issues?	9.30 - Responses N	
9.31 - Question Are there any Litter Picking issues?	9.31 - Responses N	
9.32 - Question Are there any Bin Rooms issues?	9.32 - Responses N	
9.33 - Question Are there any Bulk Refuse and Graffiti issues?	9.33 - Responses Y	9.33 - Comments 03/09/2025 Behind bike shed.
Q 9.33 - Photo 		
9.34 - Question Are there any Signs issues?	9.34 - Responses N	
9.35 - Question Are there any Numberings issues?	9.35 - Responses N	
9.36 - Question Are there any Notice Boards issues?	9.36 - Responses N	
9.37 - Question Are there any Communal Issues?	9.37 - Responses N	
9.49 - Question Are there any Fire Risk Issues?	9.49 - Responses N	
9.57 - Question Are there Communal Repairs to raise?	9.57 - Responses N	

17 Overall Estate Rating

17.1 - Question Please rate the overall Grounds Maintenance of the estate	17.1 - Responses B	
17.2 - Question Please rate the overall Internal Caretaking of the estate	17.2 - Responses B	
17.3 - Question Please rate the overall External Caretaking of the estate	17.3 - Responses C	

17.4 - Question Please rate the overall Communal Issues of the estate	17.4 - Responses B	
17.5 - Question Please rate the overall Fire Risks of the estate	17.5 - Responses A	