

<b>Company Name</b> LB of Hounslow	<b>Scheduled Start Date</b> 08/07/2025	<b>Inspection Completed on</b> 08/07/2025
<b>Location of Inspection</b> Boulton House 1 To 88	<b>Scheduled Time of Inspection</b> 11:10 AM	<b>Inspection Submission Time</b> 11:58 AM
<b>Inspector that undertook inspection</b> Nathan Stradling	<b>Template Used</b> Estate Inspection	<b>PDF Sent to</b> nathan.stradling1@hounslow.gov.uk

## Inspection Score and Overall Grade

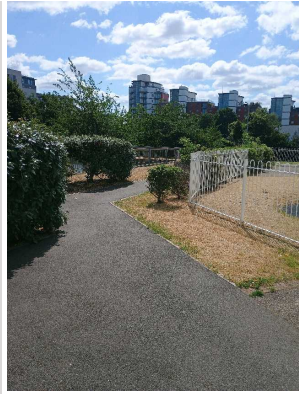
<b>Actual Score</b> 16	<b>Max Score</b> 16	<b>Inspection %</b> 100
<b>Banding Name</b> Default Banding	<b>Overall Inspection Result</b> Default Banding Item	


## 1 Inspection Details

<b>1.1 - Question</b> Type of Inspection	<b>1.1 - Responses</b> Quarterly	
<b>1.2 - Question</b> Area	<b>1.2 - Responses</b> East	
<b>1.3 - Question</b> How many blocks are you inspecting in the estate today?	<b>1.3 - Responses</b> 1	

## 2 Block 1

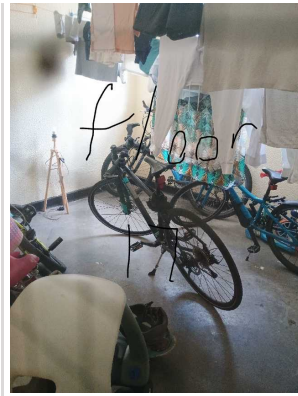
<b>2.1 - Question</b> Please state the name of the block you are inspecting	<b>2.1 - Responses</b> Boulton House	
<b>2.2 - Question</b> Please confirm you have checked everything at this block?	<b>2.2 - Responses</b> Y	
<b>2.3 - Question</b> Are there any issues to raise at this block?	<b>2.3 - Responses</b> Y	
<b>2.4 - Question</b> Are there any Ground Maintenance Issues?	<b>2.4 - Responses</b> N	<b>2.4 - Comments</b> 08/07/2025 Looking nice and cut back
<b>Q 2.4 - Photo</b>		



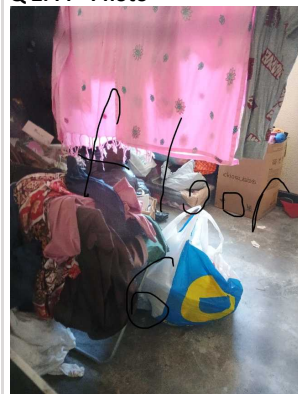
<p><b>2.11 - Question</b> Are there any Internal Caretaking issues?</p>	<p><b>2.11 - Responses</b> N</p>	
<p><b>2.26 - Question</b> Are there any External Caretaking issues?</p>	<p><b>2.26 - Responses</b> N</p>	<p><b>2.26 - Comments</b> 08/07/2025 All clear of any litter</p>
<p><b>Q 2.26 - Photo</b></p> 		
<p><b>2.37 - Question</b> Are there any Communal Issues?</p>	<p><b>2.37 - Responses</b> Y</p>	
<p><b>2.38 - Question</b> Are there any Abandoned Vehicles?</p>	<p><b>2.38 - Responses</b> N</p>	
<p><b>2.39 - Question</b> Are there any Street Lighting Issues?</p>	<p><b>2.39 - Responses</b> N</p>	
<p><b>2.40 - Question</b> Are there any Pot holes?</p>	<p><b>2.40 - Responses</b> N</p>	
<p><b>2.41 - Question</b> Are there any issues with the Cleanliness of roads/car parks?</p>	<p><b>2.41 - Responses</b> N</p>	
<p><b>2.42 - Question</b> Are the notice boards are up to date?</p>	<p><b>2.42 - Responses</b> Y</p>	
<p><b>2.43 - Question</b> Is there any old signage to report?</p>	<p><b>2.43 - Responses</b> N</p>	
<p><b>2.44 - Question</b> Are there any Items stored in drying areas?</p>	<p><b>2.44 - Responses</b> Y</p>	
<p><b>Q 2.44 - Photo</b></p>	<p><b>Q 2.44 - Photo</b></p>	<p><b>Q 2.44 - Photo</b></p>



Q 2.44 - Photo

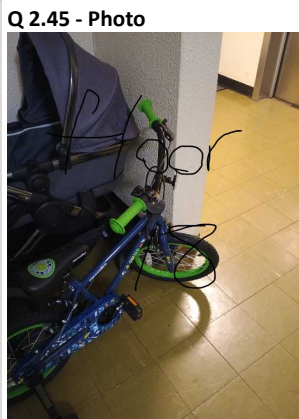


Q 2.44 - Photo



**2.45 - Question**  
Are there any Items stored in Communal areas?

**2.45 - Responses**  
Y



**2.46 - Question**  
Is the roof access doors locked?



**2.46 - Responses**  
Y

**2.47 - Question**  
Are there any Bulk rubbish items?

**2.47 - Responses**  
N

**2.48 - Question**  
Are there any Untidy gardens?

**2.48 - Responses**  
N

**2.49 - Question**  
Are there any Fire Risk Issues?

**2.49 - Responses**  
Y

Q 2.49 - Photo



<b>2.50 - Question</b> Are the Fire Doors in place and closing mechanisms checked?	<b>2.50 - Responses</b> Y	
<b>2.51 - Question</b> Are the Fire Extinguishers in place?	<b>2.51 - Responses</b> N	<b>2.51 - Comments</b> 08/07/2025 not applicable
<b>2.52 - Question</b> Are the Electrical Cupboards locked?	<b>2.52 - Responses</b> Y	
<b>2.53 - Question</b> Are the Bin chute fire stoppers/blanking plates in place?	<b>2.53 - Responses</b> N	<b>2.53 - Comments</b> 08/07/2025 Chutes no longer in use
<b>2.54 - Question</b> Have the Dry Risers been checked?	<b>2.54 - Responses</b> Y	
<b>2.55 - Question</b> Has the firefighting equipment been checked (where applicable)?	<b>2.55 - Responses</b> Y	
<b>2.56 - Question</b> Have you checked access with a fire drop key?	<b>2.56 - Responses</b> Y	
<b>2.57 - Question</b> Are there Communal Repairs to raise?	<b>2.57 - Responses</b> Y	<b>2.57 - Comments</b> 08/07/2025 Chase up Cyclehoops to get repair done

**Q 2.57 - Photo**



<b>2.58 - Question</b> Are there any Communal lighting repairs?	<b>2.58 - Responses</b> N	
<b>2.59 - Question</b> Are there any Window repairs?	<b>2.59 - Responses</b> N	
<b>2.60 - Question</b> Are there any Door Handles and Closures repairs?	<b>2.60 - Responses</b> N	
<b>2.61 - Question</b> Are there any Drying Areas repairs?	<b>2.61 - Responses</b> N	
<b>2.62 - Question</b>	<b>2.62 - Responses</b>	

Are there any Electrical Cupboard Doors repairs?	N	
<b>2.63 - Question</b> Are there any Garage Area repairs?	<b>2.63 - Responses</b> N	
<b>2.64 - Question</b> Are there any Graffiti repairs?	<b>2.64 - Responses</b> N	
<b>2.65 - Question</b> Are there any Vandalism repairs?	<b>2.65 - Responses</b> N	
<b>2.66 - Question</b> Are there any Laundry room repairs?	<b>2.66 - Responses</b> N	
<b>2.67 - Question</b> Are there any Flooring repairs?	<b>2.67 - Responses</b> N	

### 17 Overall Estate Rating

<b>17.1 - Question</b> Please rate the overall Grounds Maintenance of the estate	<b>17.1 - Responses</b> A	
<b>17.2 - Question</b> Please rate the overall Internal Caretaking of the estate	<b>17.2 - Responses</b> A	
<b>17.3 - Question</b> Please rate the overall External Caretaking of the estate	<b>17.3 - Responses</b> A	
<b>17.4 - Question</b> Please rate the overall Communal Issues of the estate	<b>17.4 - Responses</b> A	