

Company Name LB of Hounslow	Scheduled Start Date 15/07/2025	Inspection Completed on 30/07/2025
Location of Inspection Edensor Gardens (ESTEDEN)	Scheduled Time of Inspection 11:13 AM	Inspection Submission Time 11:51 AM
Inspector that undertook inspection Harkiran Nandra	Template Used Estate Inspection	PDF Sent to harkiran.nandra@hounslow.gov.uk,Stefan.Nor@Hounslow.gov.uk


Inspection Score and Overall Grade		
Actual Score	Max Score	Inspection %
13	16	81
Banding Name Default Banding	Overall Inspection Result Default Banding Item	

1 Inspection Details		
1.1 - Question Type of Inspection	1.1 - Responses Quarterly	
1.2 - Question Area	1.2 - Responses East	
1.3 - Question How many blocks are you inspecting in the estate today?	1.3 - Responses 20	



2 Block 1		
2.1 - Question Please state the name of the block you are inspecting	2.1 - Responses 1-6	
2.2 - Question Please confirm you have checked everything at this block?	2.2 - Responses Y	
2.3 - Question Are there any issues to raise at this block?	2.3 - Responses Y	
2.11 - Question Are there any Internal Caretaking issues?	2.11 - Responses Y	

3 Block 2		
3.1 - Question Please state the name of the block you are inspecting	3.1 - Responses 7-12	
3.2 - Question	3.2 - Responses Y	

Please confirm you have checked everything at this block?		
3.3 - Question Are there any issues to raise at this block?	3.3 - Responses Y	
3.11 - Question Are there any Internal Caretaking issues?	3.11 - Responses Y	
3.14 - Question Are there any Entrances issues?	3.14 - Responses Y	3.14 - Comments 15/07/2025 debries visible.
Q 3.14 - Photo 		


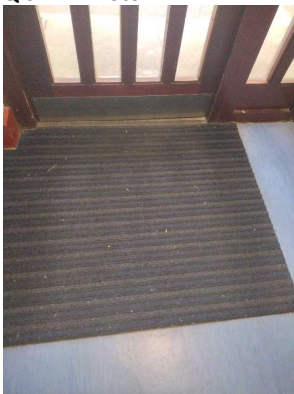

4 Block 3		
4.1 - Question Please state the name of the block you are inspecting	4.1 - Responses 13-18	
4.2 - Question Please confirm you have checked everything at this block?	4.2 - Responses Y	
4.3 - Question Are there any issues to raise at this block?	4.3 - Responses Y	
4.11 - Question Are there any Internal Caretaking issues?	4.11 - Responses Y	
4.14 - Question Are there any Entrances issues?	4.14 - Responses Y	4.14 - Comments 15/07/2025 debries visible
Q 4.14 - Photo 		

5 Block 4		

5.1 - Question Please state the name of the block you are inspecting	5.1 - Responses 21-30	
5.2 - Question Please confirm you have checked everything at this block?	5.2 - Responses Y	
5.3 - Question Are there any issues to raise at this block?	5.3 - Responses Y	
5.11 - Question Are there any Internal Caretaking issues?	5.11 - Responses Y	
5.14 - Question Are there any Entrances issues?	5.14 - Responses Y	5.14 - Comments 15/07/2025 debries visible
Q 5.14 - Photo 		
5.37 - Question Are there any Communal Issues?	5.37 - Responses Y	
5.45 - Question Are there any Items stored in Communal areas?	5.45 - Responses Y	5.45 - Comments 15/07/2025 pushchair by back door needs to be removed
Q 5.45 - Photo 		

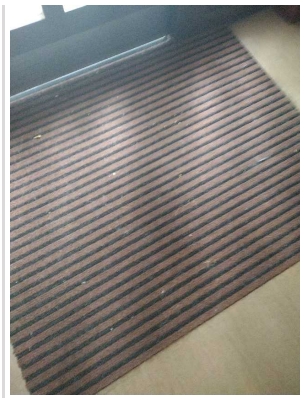
6 Block 5

6.1 - Question Please state the name of the block you are inspecting	6.1 - Responses 37-42	
6.2 - Question Please confirm you have checked everything at this block?	6.2 - Responses Y	
6.3 - Question Are there any issues to raise at this block?	6.3 - Responses Y	

6.11 - Question Are there any Internal Caretaking issues?	6.11 - Responses Y	
6.14 - Question Are there any Entrances issues?	6.14 - Responses Y	6.14 - Comments 15/07/2025 front and back entrance debries visable
Q 6.14 - Photo 	Q 6.14 - Photo 	
6.37 - Question Are there any Communal Issues?	6.37 - Responses Y	
6.45 - Question Are there any Items stored in Communal areas?	6.45 - Responses Y	6.45 - Comments 15/07/2025 items still remain in place need to be cleared
Q 6.45 - Photo 		

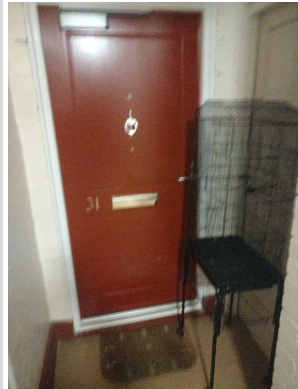
7 Block 6

7.1 - Question Please state the name of the block you are inspecting	7.1 - Responses 31-36	
7.2 - Question Please confirm you have checked everything at this block?	7.2 - Responses Y	
7.3 - Question Are there any issues to raise at this block?	7.3 - Responses Y	
7.11 - Question Are there any Internal Caretaking issues?	7.11 - Responses Y	
7.14 - Question Are there any Entrances issues?	7.14 - Responses Y	7.14 - Comments 15/07/2025 entrance debries visable
Q 7.14 - Photo		




7.37 - Question Are there any Communal Issues?	7.37 - Responses Y	
7.44 - Question Are there any Items stored in drying areas?	7.44 - Responses Y	
7.45 - Question Are there any Items stored in Communal areas?	7.45 - Responses Y	7.45 - Comments 15/07/2025 items outside door to be removed.

Q 7.45 - Photo



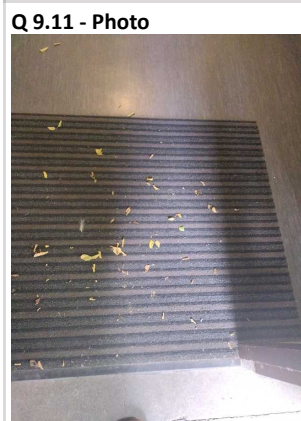
8 Block 7		
8.1 - Question Please state the name of the block you are inspecting	8.1 - Responses 44-47	
8.2 - Question Please confirm you have checked everything at this block?	8.2 - Responses Y	
8.3 - Question Are there any issues to raise at this block?	8.3 - Responses Y	
8.11 - Question Are there any Internal Caretaking issues?	8.11 - Responses Y	
8.14 - Question Are there any Entrances issues?	8.14 - Responses Y	8.14 - Comments 15/07/2025 Debries visible
Q 8.14 - Photo		



8.26 - Question Are there any External Caretaking issues?	8.26 - Responses Y	
8.57 - Question Are there Communal Repairs to raise?	8.57 - Responses Y	8.57 - Comments 15/07/2025 ceiling paint work come away.
Q 8.57 - Photo 		

9 Block 8

9.1 - Question Please state the name of the block you are inspecting	9.1 - Responses 43-50	
9.2 - Question Please confirm you have checked everything at this block?	9.2 - Responses Y	
9.3 - Question Are there any issues to raise at this block?	9.3 - Responses Y	
9.11 - Question Are there any Internal Caretaking issues?	9.11 - Responses Y	9.11 - Comments 15/07/2025 debries visible.




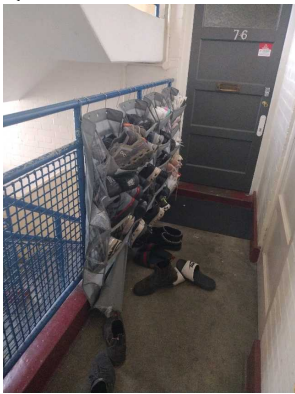

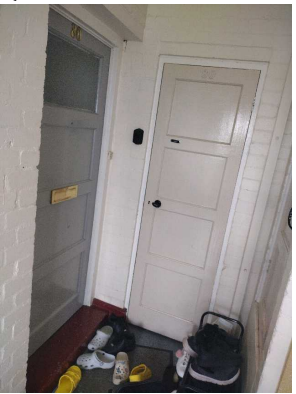
10 Block 9

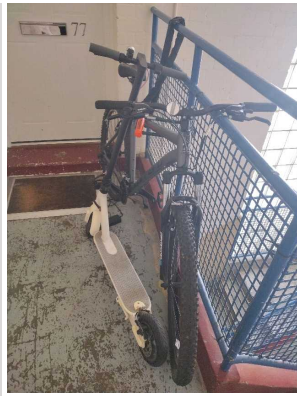
10.1 - Question Please state the name of the block you are inspecting	10.1 - Responses 49-60	
10.2 - Question Please confirm you have checked everything at this block?	10.2 - Responses Y	
10.3 - Question Are there any issues to raise at this block?	10.3 - Responses Y	
10.11 - Question Are there any Internal Caretaking issues?	10.11 - Responses Y	
10.13 - Question Are there any Landings issues?	10.13 - Responses Y	10.13 - Comments 15/07/2025 mop required
Q 10.13 - Photo 		
10.14 - Question Are there any Entrances issues?	10.14 - Responses Y	10.14 - Comments 15/07/2025 debries visible
Q 10.14 - Photo 		

11 Block 10

11.1 - Question Please state the name of the block you are inspecting	11.1 - Responses 67-72	
11.2 - Question Please confirm you have checked everything at this block?	11.2 - Responses Y	
11.3 - Question Are there any issues to raise at this block?	11.3 - Responses N	

12 Block 11

12.1 - Question Please state the name of the block you are inspecting	12.1 - Responses 73-80	
12.2 - Question Please confirm you have checked everything at this block?	12.2 - Responses Y	
12.3 - Question Are there any issues to raise at this block?	12.3 - Responses Y	
12.11 - Question Are there any Internal Caretaking issues?	12.11 - Responses Y	
12.14 - Question Are there any Entrances issues?	12.14 - Responses Y	12.14 - Comments 15/07/2025 debries visible
Q 12.14 - Photo 		
12.37 - Question Are there any Communal Issues?	12.37 - Responses Y	
12.45 - Question Are there any Items stored in Communal areas?	12.45 - Responses Y	12.45 - Comments 15/07/2025 items outside no 80 need to be removed. items outside no 79 need to be removed. items outside 77 need to be removed. 12.45 - Comments 15/07/2025 items outside no 76 need to be removed.
Q 12.45 - Photo 	Q 12.45 - Photo 	Q 12.45 - Photo 
Q 12.45 - Photo		



13 Block 12		
13.1 - Question Please state the name of the block you are inspecting	13.1 - Responses 81-90	
13.2 - Question Please confirm you have checked everything at this block?	13.2 - Responses Y	
13.3 - Question Are there any issues to raise at this block?	13.3 - Responses Y	
13.11 - Question Are there any Internal Caretaking issues?	13.11 - Responses Y	
13.14 - Question Are there any Entrances issues?	13.14 - Responses Y	13.14 - Comments 15/07/2025 Debries visible
Q 13.14 - Photo 		
13.37 - Question Are there any Communal Issues?	13.37 - Responses Y	
13.45 - Question Are there any Items stored in Communal areas?	13.45 - Responses Y	13.45 - Comments 15/07/2025 wood in communal area spoke to LH of 87 will remove wood. fridge belongs to 88 no answer. 13.45 - Comments 15/07/2025 bikes opp list
Q 13.45 - Photo	Q 13.45 - Photo	Q 13.45 - Photo



Q 13.45 - Photo



14 Block 13		
14.1 - Question Please state the name of the block you are inspecting	14.1 - Responses 97-102	
14.2 - Question Please confirm you have checked everything at this block?	14.2 - Responses Y	
14.3 - Question Are there any issues to raise at this block?	14.3 - Responses N	

15 Block 14		
15.1 - Question Please state the name of the block you are inspecting	15.1 - Responses 103-110	
15.2 - Question Please confirm you have checked everything at this block?	15.2 - Responses Y	
15.3 - Question Are there any issues to raise at this block?	15.3 - Responses N	

16 Block 15		
16.1 - Question Please state the name of the block you are inspecting	16.1 - Responses 109-120	
16.2 - Question	16.2 - Responses Y	

Please confirm you have checked everything at this block?		
16.3 - Question Are there any issues to raise at this block?	16.3 - Responses N	

17 Overall Estate Rating		
17.1 - Question Please rate the overall Grounds Maintenance of the estate	17.1 - Responses A	
17.2 - Question Please rate the overall Internal Caretaking of the estate	17.2 - Responses B	
17.3 - Question Please rate the overall External Caretaking of the estate	17.3 - Responses B	
17.4 - Question Please rate the overall Communal Issues of the estate	17.4 - Responses B	