

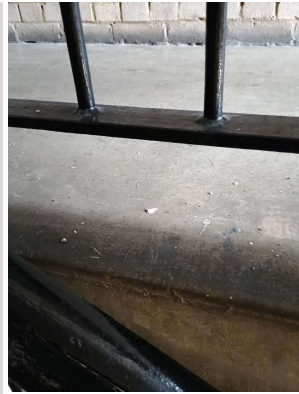
Inspection Report

Company Name LB of Hounslow	Scheduled Start Date 23/07/2025	Inspection Completed on 23/07/2025
Location of Inspection The Clumps (ESTCLUM)	Scheduled Time of Inspection 11:24 AM	Inspection Submission Time 11:38 AM
Inspector that undertook inspection Keith Asuncion	Template Used Estate Inspection	PDF Sent to keith.asuncion@hounslow.gov.uk

Inspection Score and Overall Grade		
Actual Score	Max Score	Inspection %
18	20	90
Banding Name Default Banding	Overall Inspection Result Default Banding Item	

1 Inspection Details		
1.1 - Question Type of Inspection	1.1 - Responses Quarterly	
1.2 - Question Area	1.2 - Responses West	
1.3 - Question How many blocks are you inspecting in the estate today?	1.3 - Responses 2	


2 Block 1		
2.1 - Question Please state the name of the block you are inspecting	2.1 - Responses 15-20 The Clumps	
2.2 - Question Please confirm you have checked everything at this block?	2.2 - Responses Y	
2.3 - Question Are there any issues to raise at this block?	2.3 - Responses Y	
2.4 - Question Are there any Ground Maintenance Issues?	2.4 - Responses N	
2.11 - Question Are there any Internal Caretaking issues?	2.11 - Responses Y	
2.12 - Question Are there any Cleanliness: Stairs issues?	2.12 - Responses Y	
2.13 - Question Are there any Landings issues?	2.13 - Responses Y	2.13 - Comments 23/07/2025 Stairs and Landing need sweeping.
Q 2.13 - Photo		




2.14 - Question Are there any Entrances issues?	2.14 - Responses N	
2.15 - Question Are there any Lifts issues?	2.15 - Responses N	
2.16 - Question Are there any Door and Window Glazing issues?	2.16 - Responses N	
2.17 - Question Are there any Ledges issues?	2.17 - Responses N	
2.18 - Question Are there any Walls issues?	2.18 - Responses N	
2.19 - Question Are there any Lighting issues?	2.19 - Responses N	
2.20 - Question Are there any Handrails secure issues?	2.20 - Responses N	
2.21 - Question Are there any Chute Rooms issues?	2.21 - Responses N	
2.22 - Question Are there any Signage issues?	2.22 - Responses N	
2.23 - Question Are there any Graffiti issues?	2.23 - Responses N	
2.24 - Question Are there any issues with cleaning completion sheets?	2.24 - Responses N	
2.25 - Question Are there any issues with Notice Boards?	2.25 - Responses N	
2.26 - Question Are there any External Caretaking issues?	2.26 - Responses N	
2.37 - Question Are there any Communal Issues?	2.37 - Responses Y	
2.38 - Question Are there any Abandoned Vehicles?	2.38 - Responses N	
2.39 - Question Are there any Street Lighting Issues?	2.39 - Responses N	
2.40 - Question Are there any Pot holes?	2.40 - Responses N	
2.41 - Question Are there any issues with the Cleanliness of roads/car parks?	2.41 - Responses N	
2.42 - Question Are the notice boards are up to date?	2.42 - Responses Y	
2.43 - Question Is there any old signage to report?	2.43 - Responses Y	2.43 - Comments

		23/07/2025 Faded No Ball Game sign in front of block.
Q 2.43 - Photo 		
2.44 - Question Are there any Items stored in drying areas?	2.44 - Responses N	
2.45 - Question Are there any Items stored in Communal areas?	2.45 - Responses N	
2.46 - Question Is the roof access doors locked?	2.46 - Responses Y	
2.47 - Question Are there any Bulk rubbish items?	2.47 - Responses N	
2.48 - Question Are there any Untidy gardens?	2.48 - Responses N	
2.49 - Question Are there any Fire Risk Issues?	2.49 - Responses Y	2.49 - Comments 23/07/2025 Wooden Metrostors too close to building.
Q 2.49 - Photo 	Q 2.49 - Photo 	
2.50 - Question Are the Fire Doors in place and closing mechanisms checked?	2.50 - Responses Y	
2.51 - Question Are the Fire Extinguishers in place?	2.51 - Responses Y	
2.52 - Question Are the Electrical Cupboards locked?	2.52 - Responses Y	
2.53 - Question Are the Bin chute fire stoppers/blanking plates in place?	2.53 - Responses Y	
2.54 - Question Have the Dry Risers been checked?	2.54 - Responses Y	
2.55 - Question Has the firefighting equipment been checked (where applicable)?	2.55 - Responses Y	
2.56 - Question Have you checked access with a fire drop key?	2.56 - Responses Y	
2.57 - Question	2.57 - Responses	

Are there Communal Repairs to raise?	N	
--------------------------------------	---	--

3 Block 2		
3.1 - Question Please state the name of the block you are inspecting	3.1 - Responses 13a-13f The Clumps	
3.2 - Question Please confirm you have checked everything at this block?	3.2 - Responses Y	
3.3 - Question Are there any issues to raise at this block?	3.3 - Responses Y	
3.4 - Question Are there any Ground Maintenance Issues?	3.4 - Responses N	
3.11 - Question Are there any Internal Caretaking issues?	3.11 - Responses N	
3.26 - Question Are there any External Caretaking issues?	3.26 - Responses N	
3.37 - Question Are there any Communal Issues?	3.37 - Responses N	
3.49 - Question Are there any Fire Risk Issues?	3.49 - Responses Y	3.49 - Comments 23/07/2025 Wooden Metrostors too close to the building.
Q 3.49 - Photo 		
3.50 - Question Are the Fire Doors in place and closing mechanisms checked?	3.50 - Responses Y	
3.51 - Question Are the Fire Extinguishers in place?	3.51 - Responses Y	
3.52 - Question Are the Electrical Cupboards locked?	3.52 - Responses Y	
3.53 - Question Are the Bin chute fire stoppers/blanking plates in place?	3.53 - Responses Y	
3.54 - Question Have the Dry Risers been checked?	3.54 - Responses Y	
3.55 - Question Has the firefighting equipment been checked (where applicable)?	3.55 - Responses Y	
3.56 - Question	3.56 - Responses N	3.56 - Comments

Have you checked access with a fire drop key?		23/07/2025 No fire drop key for this block. Block does not have a door entry system.
3.57 - Question Are there Communal Repairs to raise?	3.57 - Responses Y	
3.58 - Question Are there any Communal lighting repairs?	3.58 - Responses N	
3.59 - Question Are there any Window repairs?	3.59 - Responses N	
3.60 - Question Are there any Door Handles and Closures repairs?	3.60 - Responses N	
3.61 - Question Are there any Drying Areas repairs?	3.61 - Responses N	
3.62 - Question Are there any Electrical Cupboard Doors repairs?	3.62 - Responses N	
3.63 - Question Are there any Garage Area repairs?	3.63 - Responses N	
3.64 - Question Are there any Graffiti repairs?	3.64 - Responses N	
3.65 - Question Are there any Vandalism repairs?	3.65 - Responses N	
3.66 - Question Are there any Laundry room repairs?	3.66 - Responses N	
3.67 - Question Are there any Flooring repairs?	3.67 - Responses Y	3.67 - Comments 23/07/2025 Rubber threshold on stairs missing. Needs replacement.
Q 3.67 - Photo 		

17 Overall Estate Rating		
17.1 - Question Please rate the overall Grounds Maintenance of the estate	17.1 - Responses A	
17.2 - Question Please rate the overall Internal Caretaking of the estate	17.2 - Responses B	
17.3 - Question Please rate the overall External Caretaking of the estate	17.3 - Responses A	
17.4 - Question Please rate the overall Communal Issues of the estate	17.4 - Responses A	
17.5 - Question Please rate the overall Fire Risks of the estate	17.5 - Responses B	