

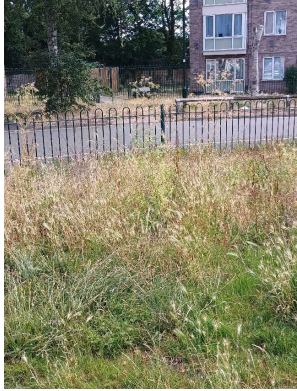


Inspection Report



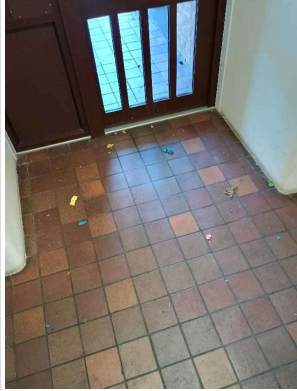
Company Name LB of Hounslow	Scheduled Start Date 09/07/2025	Inspection Completed on 10/07/2025
Location of Inspection Bethany Waye (ESTBETH)	Scheduled Time of Inspection 4:10 PM	Inspection Submission Time 2:49 PM
Inspector that undertook inspection Keith Asuncion	Template Used Estate Inspection	PDF Sent to keith.asuncion@hounslow.gov.uk

Inspection Score and Overall Grade		
Actual Score	Max Score	Inspection %
16	20	80
Banding Name Default Banding	Overall Inspection Result Default Banding Item	

1 Inspection Details		
1.1 - Question Type of Inspection	1.1 - Responses Quarterly	
1.2 - Question Area	1.2 - Responses West	
1.3 - Question How many blocks are you inspecting in the estate today?	1.3 - Responses 10	

2 Block 1		
2.1 - Question Please state the name of the block you are inspecting	2.1 - Responses 38-48 Bethany Waye	
2.2 - Question Please confirm you have checked everything at this block?	2.2 - Responses Y	
2.3 - Question Are there any issues to raise at this block?	2.3 - Responses Y	
2.4 - Question Are there any Ground Maintenance Issues?	2.4 - Responses Y	
2.5 - Question Are there Grass Cutting issues?	2.5 - Responses Y	2.5 - Comments 09/07/2025 Grass in front of blocks 38-48a and 32-36 Bethany Waye needs cutting. 2.5 - Comments 10/07/2025 Grass verge in front of block 65-75a was reported to Hounslow Highways who cut the grass in this area.
Q 2.5 - Photo	Q 2.5 - Photo	Q 2.5 - Photo

		
2.6 - Question Are there Weeding issues?	2.6 - Responses Y	
2.7 - Question Are there Flower/Shrub Areas issues?	2.7 - Responses N	
2.8 - Question Are there Trees: Pruning issues?	2.8 - Responses N	
2.9 - Question Are there Safety – Foliage & Root Problems issues?	2.9 - Responses Y	2.9 - Comments 10/07/2025 Ivy growing up the side of block 65-75a Bethany Waye. Has been reported to Grounds Maintenance Team.
Q 2.9 - Photo 		
2.10 - Question Are there Hedges Trimmed issues?	2.10 - Responses N	
2.11 - Question Are there any Internal Caretaking issues?	2.11 - Responses Y	
2.12 - Question Are there any Cleanliness: Stairs issues?	2.12 - Responses Y	2.12 - Comments 09/07/2025 Stairs and landings need sweeping in block 38-48a Bethany Waye.
Q 2.12 - Photo	Q 2.12 - Photo	Q 2.12 - Photo

		
2.13 - Question Are there any Landings issues?	2.13 - Responses Y	2.13 - Comments 09/07/2025 Need sweeping in block 38-48a Bethany Waye.
2.14 - Question Are there any Entrances issues?	2.14 - Responses Y	2.14 - Comments 09/07/2025 Door entry system not working.
2.15 - Question Are there any Lifts issues?	2.15 - Responses N	
2.16 - Question Are there any Door and Window Glazing issues?	2.16 - Responses N	
2.17 - Question Are there any Ledges issues?	2.17 - Responses N	
2.18 - Question Are there any Walls issues?	2.18 - Responses N	
2.19 - Question Are there any Lighting issues?	2.19 - Responses N	
2.20 - Question Are there any Handrails secure issues?	2.20 - Responses N	
2.21 - Question Are there any Chute Rooms issues?	2.21 - Responses N	
2.22 - Question Are there any Signage issues?	2.22 - Responses N	
2.23 - Question Are there any Graffiti issues?	2.23 - Responses N	
2.24 - Question Are there any issues with cleaning completion sheets?	2.24 - Responses N	
2.25 - Question Are there any issues with Notice Boards?	2.25 - Responses N	
2.26 - Question Are there any External Caretaking issues?	2.26 - Responses N	
2.37 - Question Are there any Communal Issues?	2.37 - Responses Y	
2.38 - Question Are there any Abandoned Vehicles?	2.38 - Responses Y	2.38 - Comments 10/07/2025 Several motor scooters left in communal areas behind block 38-48a Bethany Waye
Q 2.38 - Photo	Q 2.38 - Photo	Q 2.38 - Photo

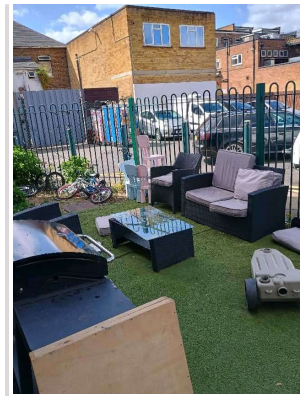
		
2.39 - Question Are there any Street Lighting Issues?	2.39 - Responses N	
2.40 - Question Are there any Pot holes?	2.40 - Responses N	
2.41 - Question Are there any issues with the Cleanliness of roads/car parks?	2.41 - Responses Y	2.41 - Comments 09/07/2025 Gulley in front of block 38-48a Bethany Waye is blocked.Takes 2 days to drain. EIO reported this to Hounslow Highways.
2.42 - Question Are the notice boards are up to date?	2.42 - Responses Y	
2.43 - Question Is there any old signage to report?	2.43 - Responses N	2.43 - Comments 09/07/2025 Old signage taken down by EIO.
2.44 - Question Are there any Items stored in drying areas?	2.44 - Responses Y	
Q 2.44 - Photo 		
2.45 - Question Are there any Items stored in Communal areas?	2.45 - Responses Y	
Q 2.45 - Photo	Q 2.45 - Photo	Q 2.45 - Photo



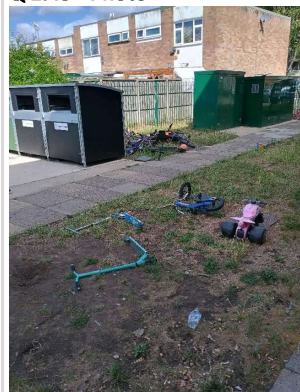
Q 2.45 - Photo



Q 2.45 - Photo



Q 2.45 - Photo



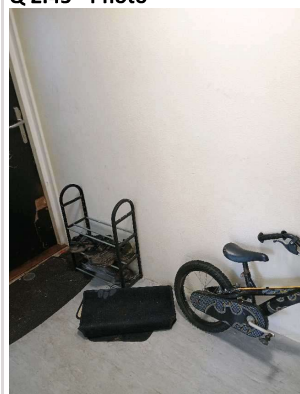
Q 2.45 - Photo



Q 2.45 - Photo



Q 2.45 - Photo



2.46 - Question

Is the roof access doors locked?



2.46 - Responses

Y



2.47 - Question

Are there any Bulk rubbish items?

2.47 - Responses

N

2.48 - Question

Are there any Untidy gardens?

2.48 - Responses

N

2.49 - Question

Are there any Fire Risk Issues?

2.49 - Responses

Y

2.50 - Question

Are the Fire Doors in place and closing mechanisms checked?

2.50 - Responses

Y

2.51 - Question

Are the Fire Extinguishers in place?

2.51 - Responses

Y

2.52 - Question

Are the Electrical Cupboards locked?

2.52 - Responses

Y

2.53 - Question

Are the Bin chute fire stoppers/blanking plates in place?

2.53 - Responses

Y

2.54 - Question Have the Dry Risers been checked?	2.54 - Responses Y	
2.55 - Question Has the firefighting equipment been checked (where applicable)?	2.55 - Responses Y	
2.56 - Question Have you checked access with a fire drop key?	2.56 - Responses Y	
2.57 - Question Are there Communal Repairs to raise?	2.57 - Responses Y	
2.58 - Question Are there any Communal lighting repairs?	2.58 - Responses N	
2.59 - Question Are there any Window repairs?	2.59 - Responses Y	2.59 - Comments 09/07/2025 Window restrictor on 1st floor landing need replacement
2.60 - Question Are there any Door Handles and Closures repairs?	2.60 - Responses Y	2.60 - Comments 10/07/2025 Front and back communal doors are not working. Raise repair with Alphatrack.
2.61 - Question Are there any Drying Areas repairs?	2.61 - Responses N	
2.62 - Question Are there any Electrical Cupboard Doors repairs?	2.62 - Responses N	
2.63 - Question Are there any Garage Area repairs?	2.63 - Responses N	
2.64 - Question Are there any Graffiti repairs?	2.64 - Responses N	
2.65 - Question Are there any Vandalism repairs?	2.65 - Responses N	
2.66 - Question Are there any Laundry room repairs?	2.66 - Responses N	
2.67 - Question Are there any Flooring repairs?	2.67 - Responses N	

3 Block 2

3.1 - Question Please state the name of the block you are inspecting	3.1 - Responses 32-36 Bethany Waye	
3.2 - Question Please confirm you have checked everything at this block?	3.2 - Responses Y	
3.3 - Question Are there any issues to raise at this block?	3.3 - Responses Y	
3.4 - Question Are there any Ground Maintenance Issues?	3.4 - Responses N	
3.11 - Question Are there any Internal Caretaking issues?	3.11 - Responses N	
3.26 - Question Are there any External Caretaking issues?	3.26 - Responses N	
3.37 - Question Are there any Communal Issues?	3.37 - Responses N	

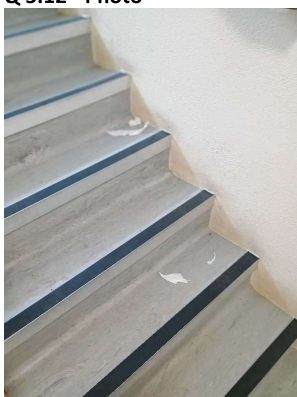

3.49 - Question Are there any Fire Risk Issues?	3.49 - Responses N	
3.57 - Question Are there Communal Repairs to raise?	3.57 - Responses Y	
3.58 - Question Are there any Communal lighting repairs?	3.58 - Responses N	
3.59 - Question Are there any Window repairs?	3.59 - Responses N	
3.60 - Question Are there any Door Handles and Closures repairs?	3.60 - Responses N	
3.61 - Question Are there any Drying Areas repairs?	3.61 - Responses N	
3.62 - Question Are there any Electrical Cupboard Doors repairs?	3.62 - Responses N	
3.63 - Question Are there any Garage Area repairs?	3.63 - Responses N	
3.64 - Question Are there any Graffiti repairs?	3.64 - Responses N	
3.65 - Question Are there any Vandalism repairs?	3.65 - Responses Y	3.65 - Comments 10/07/2025 Bike shelter behind block 32-36a has broken polycarbonate cover.
Q 3.65 - Photo 	Q 3.65 - Photo 	

4 Block 3


4.1 - Question Please state the name of the block you are inspecting	4.1 - Responses 53-63a Bethany Waye	
4.2 - Question Please confirm you have checked everything at this block?	4.2 - Responses Y	
4.3 - Question Are there any issues to raise at this block?	4.3 - Responses N	

5 Block 4

5.1 - Question Please state the name of the block you are inspecting	5.1 - Responses 41-51a Bethany Waye	
5.2 - Question	5.2 - Responses	

Please confirm you have checked everything at this block?	Y	
5.3 - Question Are there any issues to raise at this block?	5.3 - Responses Y	
5.4 - Question Are there any Ground Maintenance Issues?	5.4 - Responses N	
5.11 - Question Are there any Internal Caretaking issues?	5.11 - Responses Y	
5.12 - Question Are there any Cleanliness: Stairs issues?	5.12 - Responses Y	5.12 - Comments 10/07/2025 Stairs needed sweeping at the time of the inspection.
Q 5.12 - Photo 		
5.13 - Question Are there any Landings issues?	5.13 - Responses Y	5.13 - Comments 10/07/2025 Tenant leaving bin bag in front of flat door in communal area.
Q 5.13 - Photo 		
5.14 - Question Are there any Entrances issues?	5.14 - Responses N	
5.15 - Question Are there any Lifts issues?	5.15 - Responses N	
5.16 - Question Are there any Door and Window Glazing issues?	5.16 - Responses N	
5.17 - Question Are there any Ledges issues?	5.17 - Responses N	
5.18 - Question Are there any Walls issues?	5.18 - Responses N	
5.19 - Question Are there any Lighting issues?	5.19 - Responses N	
5.20 - Question	5.20 - Responses	

Are there any Handrails secure issues?	N	
5.21 - Question Are there any Chute Rooms issues?	5.21 - Responses N	
5.22 - Question Are there any Signage issues?	5.22 - Responses N	
5.23 - Question Are there any Graffiti issues?	5.23 - Responses N	
5.24 - Question Are there any issues with cleaning completion sheets?	5.24 - Responses N	
5.25 - Question Are there any issues with Notice Boards?	5.25 - Responses N	
5.26 - Question Are there any External Caretaking issues?	5.26 - Responses N	
5.37 - Question Are there any Communal Issues?	5.37 - Responses N	
5.49 - Question Are there any Fire Risk Issues?	5.49 - Responses Y	
5.50 - Question Are the Fire Doors in place and closing mechanisms checked?	5.50 - Responses Y	
5.51 - Question Are the Fire Extinguishers in place?	5.51 - Responses Y	
5.52 - Question Are the Electrical Cupboards locked?	5.52 - Responses Y	
5.53 - Question Are the Bin chute fire stoppers/blanking plates in place?	5.53 - Responses Y	
5.54 - Question Have the Dry Risers been checked?	5.54 - Responses Y	
5.55 - Question Has the firefighting equipment been checked (where applicable)?	5.55 - Responses Y	
5.56 - Question Have you checked access with a fire drop key?	5.56 - Responses Y	5.56 - Comments 10/07/2025 Fire drop key box not working.
5.57 - Question Are there Communal Repairs to raise?	5.57 - Responses Y	
5.58 - Question Are there any Communal lighting repairs?	5.58 - Responses N	
5.59 - Question Are there any Window repairs?	5.59 - Responses N	
5.60 - Question Are there any Door Handles and Closures repairs?	5.60 - Responses N	
5.61 - Question Are there any Drying Areas repairs?	5.61 - Responses N	
5.62 - Question Are there any Electrical Cupboard Doors repairs?	5.62 - Responses N	
5.63 - Question Are there any Garage Area repairs?	5.63 - Responses N	
5.64 - Question Are there any Graffiti repairs?	5.64 - Responses N	


5.65 - Question Are there any Vandalism repairs?	5.65 - Responses Y	5.65 - Comments 10/07/2025 Bike shed polycarbonate cover broken.
Q 5.65 - Photo 		
5.66 - Question Are there any Laundry room repairs?	5.66 - Responses N	
5.67 - Question Are there any Flooring repairs?	5.67 - Responses N	

6 Block 5		
6.1 - Question Please state the name of the block you are inspecting	6.1 - Responses 29-39a Bethany Waye	
6.2 - Question Please confirm you have checked everything at this block?	6.2 - Responses Y	
6.3 - Question Are there any issues to raise at this block?	6.3 - Responses Y	
6.4 - Question Are there any Ground Maintenance Issues?	6.4 - Responses N	
6.11 - Question Are there any Internal Caretaking issues?	6.11 - Responses N	
6.26 - Question Are there any External Caretaking issues?	6.26 - Responses N	
6.37 - Question Are there any Communal Issues?	6.37 - Responses Y	
6.38 - Question Are there any Abandoned Vehicles?	6.38 - Responses N	
6.39 - Question Are there any Street Lighting Issues?	6.39 - Responses N	
6.40 - Question Are there any Pot holes?	6.40 - Responses N	
6.41 - Question Are there any issues with the Cleanliness of roads/car parks?	6.41 - Responses N	
6.42 - Question Are the notice boards are up to date?	6.42 - Responses Y	
6.43 - Question Is there any old signage to report?	6.43 - Responses N	
6.44 - Question	6.44 - Responses	

Are there any Items stored in drying areas?	N	
6.45 - Question Are there any Items stored in Communal areas?	6.45 - Responses Y	
Q 6.45 - Photo 	Q 6.45 - Photo 	Q 6.45 - Photo 
6.46 - Question Is the roof access doors locked?	6.46 - Responses Y	
6.47 - Question Are there any Bulk rubbish items?	6.47 - Responses N	
6.48 - Question Are there any Untidy gardens?	6.48 - Responses N	
6.49 - Question Are there any Fire Risk Issues?	6.49 - Responses Y	6.49 - Comments 10/07/2025 Residents using barbecues in communal areas.
Q 6.49 - Photo 	Q 6.49 - Photo 	
6.50 - Question Are the Fire Doors in place and closing mechanisms checked?	6.50 - Responses Y	
6.51 - Question Are the Fire Extinguishers in place?	6.51 - Responses Y	
6.52 - Question Are the Electrical Cupboards locked?	6.52 - Responses Y	
6.53 - Question Are the Bin chute fire stoppers/blanking plates in place?	6.53 - Responses Y	
6.54 - Question Have the Dry Risers been checked?	6.54 - Responses Y	
6.55 - Question Has the firefighting equipment been checked (where applicable)?	6.55 - Responses Y	
6.56 - Question	6.56 - Responses Y	

Have you checked access with a fire drop key?		
6.57 - Question Are there Communal Repairs to raise?	6.57 - Responses N	

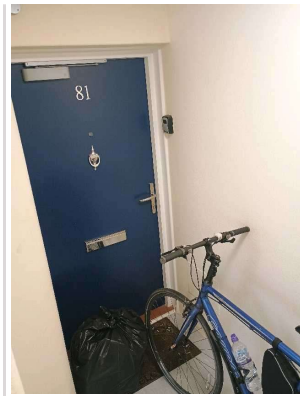
7 Block 6		
7.1 - Question Please state the name of the block you are inspecting	7.1 - Responses 17-27a Bethany Waye	
7.2 - Question Please confirm you have checked everything at this block?	7.2 - Responses Y	
7.3 - Question Are there any issues to raise at this block?	7.3 - Responses N	

8 Block 7		
8.1 - Question Please state the name of the block you are inspecting	8.1 - Responses 65-75a Bethany Waye	
8.2 - Question Please confirm you have checked everything at this block?	8.2 - Responses Y	
8.3 - Question Are there any issues to raise at this block?	8.3 - Responses Y	
8.4 - Question Are there any Ground Maintenance Issues?	8.4 - Responses Y	8.4 - Comments 10/07/2025 Ivy growing up the side of block.
Q 8.4 - Photo 		
8.5 - Question Are there Grass Cutting issues?	8.5 - Responses N	
8.6 - Question Are there Weeding issues?	8.6 - Responses N	
8.7 - Question Are there Flower/Shrub Areas issues?	8.7 - Responses N	
8.8 - Question Are there Trees: Pruning issues?	8.8 - Responses N	
8.9 - Question Are there Safety – Foliage & Root Problems issues?	8.9 - Responses N	
8.10 - Question Are there Hedges Trimmed issues?	8.10 - Responses N	

8.11 - Question Are there any Internal Caretaking issues?	8.11 - Responses N	
8.26 - Question Are there any External Caretaking issues?	8.26 - Responses N	
8.37 - Question Are there any Communal Issues?	8.37 - Responses Y	
8.38 - Question Are there any Abandoned Vehicles?	8.38 - Responses N	
8.39 - Question Are there any Street Lighting Issues?	8.39 - Responses N	
8.40 - Question Are there any Pot holes?	8.40 - Responses N	
8.41 - Question Are there any issues with the Cleanliness of roads/car parks?	8.41 - Responses N	
8.42 - Question Are the notice boards are up to date?	8.42 - Responses Y	
8.43 - Question Is there any old signage to report?	8.43 - Responses N	
8.44 - Question Are there any Items stored in drying areas?	8.44 - Responses N	
8.45 - Question Are there any Items stored in Communal areas?	8.45 - Responses Y	
Q 8.45 - Photo 	Q 8.45 - Photo 	Q 8.45 - Photo 
Q 8.45 - Photo 		
8.46 - Question Is the roof access doors locked?	8.46 - Responses Y	
8.47 - Question Are there any Bulk rubbish items?	8.47 - Responses N	

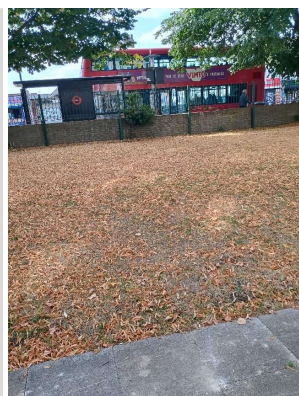
8.48 - Question Are there any Untidy gardens?	8.48 - Responses N	
8.49 - Question Are there any Fire Risk Issues?	8.49 - Responses N	
8.57 - Question Are there Communal Repairs to raise?	8.57 - Responses N	

9 Block 8		
9.1 - Question Please state the name of the block you are inspecting	9.1 - Responses 77-87a Bethany Waye	
9.2 - Question Please confirm you have checked everything at this block?	9.2 - Responses Y	
9.3 - Question Are there any issues to raise at this block?	9.3 - Responses Y	
9.4 - Question Are there any Ground Maintenance Issues?	9.4 - Responses N	
9.11 - Question Are there any Internal Caretaking issues?	9.11 - Responses N	
9.26 - Question Are there any External Caretaking issues?	9.26 - Responses N	
9.37 - Question Are there any Communal Issues?	9.37 - Responses Y	
9.38 - Question Are there any Abandoned Vehicles?	9.38 - Responses N	
9.39 - Question Are there any Street Lighting Issues?	9.39 - Responses N	
9.40 - Question Are there any Pot holes?	9.40 - Responses N	
9.41 - Question Are there any issues with the Cleanliness of roads/car parks?	9.41 - Responses N	
9.42 - Question Are the notice boards up to date?	9.42 - Responses Y	
9.43 - Question Is there any old signage to report?	9.43 - Responses N	
9.44 - Question Are there any Items stored in drying areas?	9.44 - Responses N	
9.45 - Question Are there any Items stored in Communal areas?	9.45 - Responses Y	
Q 9.45 - Photo	Q 9.45 - Photo	



9.46 - Question Is the roof access doors locked?	9.46 - Responses Y	
9.47 - Question Are there any Bulk rubbish items?	9.47 - Responses N	
9.48 - Question Are there any Untidy gardens?	9.48 - Responses N	
9.49 - Question Are there any Fire Risk Issues?	9.49 - Responses N	
9.57 - Question Are there Communal Repairs to raise?	9.57 - Responses N	

10 Block 9		
10.1 - Question Please state the name of the block you are inspecting	10.1 - Responses 89-99a Bethany Waye	
10.2 - Question Please confirm you have checked everything at this block?	10.2 - Responses Y	
10.3 - Question Are there any issues to raise at this block?	10.3 - Responses Y	
10.4 - Question Are there any Ground Maintenance Issues?	10.4 - Responses Y	
10.5 - Question Are there Grass Cutting issues?	10.5 - Responses N	
10.6 - Question Are there Weeding issues?	10.6 - Responses N	
10.7 - Question Are there Flower/Shrub Areas issues?	10.7 - Responses N	
10.8 - Question Are there Trees: Pruning issues?	10.8 - Responses N	
10.9 - Question Are there Safety – Foliage & Root Problems issues?	10.9 - Responses Y	10.9 - Comments 10/07/2025 Can leaves in the back communal garden be collected.
Q 10.9 - Photo		



10.10 - Question Are there Hedges Trimmed issues?	10.10 - Responses N	
10.11 - Question Are there any Internal Caretaking issues?	10.11 - Responses N	
10.26 - Question Are there any External Caretaking issues?	10.26 - Responses N	
10.37 - Question Are there any Communal Issues?	10.37 - Responses N	
10.49 - Question Are there any Fire Risk Issues?	10.49 - Responses N	
10.57 - Question Are there Communal Repairs to raise?	10.57 - Responses N	

11 Block 10

11.1 - Question Please state the name of the block you are inspecting	11.1 - Responses 101-111a Bethany Waye	
11.2 - Question Please confirm you have checked everything at this block?	11.2 - Responses Y	
11.3 - Question Are there any issues to raise at this block?	11.3 - Responses N	

17 Overall Estate Rating

17.1 - Question Please rate the overall Grounds Maintenance of the estate	17.1 - Responses B	
17.2 - Question Please rate the overall Internal Caretaking of the estate	17.2 - Responses B	
17.3 - Question Please rate the overall External Caretaking of the estate	17.3 - Responses A	
17.4 - Question Please rate the overall Communal Issues of the estate	17.4 - Responses B	
17.5 - Question Please rate the overall Fire Risks of the estate	17.5 - Responses B	

