

# Inspection Report

<b>Company Name</b> LB of Hounslow	<b>Scheduled Start Date</b> 08/10/2025	<b>Inspection Completed on</b> 08/10/2025
<b>Location of Inspection</b> Swann Court 1 To 18	<b>Scheduled Time of Inspection</b> 9:27 AM	<b>Inspection Submission Time</b> 12:10 PM
<b>Inspector that undertook inspection</b> Nathan Stradling	<b>Template Used</b> Estate Inspection	<b>PDF Sent to</b> nathan.stradling1@hounslow.gov.uk

Inspection Score and Overall Grade		
<b>Actual Score</b>	<b>Max Score</b>	<b>Inspection %</b>
16	16	100
<b>Banding Name</b> Default Banding	<b>Overall Inspection Result</b> Default Banding Item	

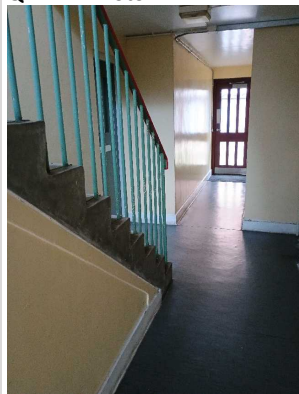
1 Inspection Details		
<b>1.1 - Question</b> Type of Inspection	<b>1.1 - Responses</b> Quarterly	
<b>1.2 - Question</b> Area	<b>1.2 - Responses</b> South	
<b>1.3 - Question</b> How many blocks are you inspecting in the estate today?	<b>1.3 - Responses</b> 8	

2 Block 1		
<b>2.1 - Question</b> Please state the name of the block you are inspecting	<b>2.1 - Responses</b> Swann Court	
<b>2.2 - Question</b> Please confirm you have checked everything at this block?	<b>2.2 - Responses</b> Y	
<b>2.3 - Question</b> Are there any issues to raise at this block?	<b>2.3 - Responses</b> Y	
<b>2.4 - Question</b> Are there any Ground Maintenance Issues?	<b>2.4 - Responses</b> N	<b>2.4 - Comments</b> 08/10/2025 Everything cut back
<b>Q 2.4 - Photo</b>		



<b>2.11 - Question</b> Are there any Internal Caretaking issues?	<b>2.11 - Responses</b> N	<b>2.11 - Comments</b> 08/10/2025 All areas free from any items
---	------------------------------	--

**Q 2.11 - Photo**



<b>2.26 - Question</b> Are there any External Caretaking issues?	<b>2.26 - Responses</b> N	<b>2.26 - Comments</b> 08/10/2025 All clean and tidy
---	------------------------------	---

**Q 2.26 - Photo**



<b>2.37 - Question</b> Are there any Communal Issues?	<b>2.37 - Responses</b> Y	<b>2.37 - Comments</b> 08/10/2025 Chairs outside property No 18. Caretaker and Housing Officer aware
--	------------------------------	---

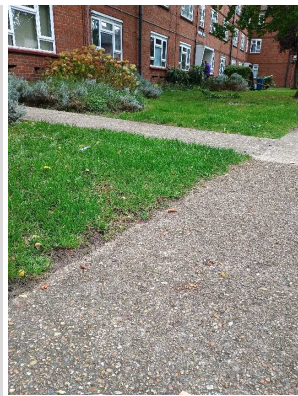
**Q 2.37 - Photo**



<b>2.38 - Question</b> Are there any Abandoned Vehicles?	<b>2.38 - Responses</b> N	
<b>2.39 - Question</b> Are there any Street Lighting Issues?	<b>2.39 - Responses</b> N	
<b>2.40 - Question</b> Are there any Pot holes?	<b>2.40 - Responses</b> N	
<b>2.41 - Question</b> Are there any issues with the Cleanliness of roads/car parks?	<b>2.41 - Responses</b> N	
<b>2.42 - Question</b> Are the notice boards are up to date?	<b>2.42 - Responses</b> Y	
<b>2.43 - Question</b> Is there any old signage to report?	<b>2.43 - Responses</b> N	
<b>2.44 - Question</b> Are there any Items stored in drying areas?	<b>2.44 - Responses</b> N	
<b>2.45 - Question</b> Are there any Items stored in Communal areas?	<b>2.45 - Responses</b> Y	
<b>2.46 - Question</b> Is the roof access doors locked?	<b>2.46 - Responses</b> Y	
<b>2.47 - Question</b> Are there any Bulk rubbish items?	<b>2.47 - Responses</b> N	
<b>2.48 - Question</b> Are there any Untidy gardens?	<b>2.48 - Responses</b> N	
<b>2.49 - Question</b> Are there any Fire Risk Issues?	<b>2.49 - Responses</b> N	
<b>2.57 - Question</b> Are there Communal Repairs to raise?	<b>2.57 - Responses</b> N	

### 3 Block 2

<b>3.1 - Question</b> Please state the name of the block you are inspecting	<b>3.1 - Responses</b> Wisdom Court	
<b>3.2 - Question</b> Please confirm you have checked everything at this block?	<b>3.2 - Responses</b> Y	
<b>3.3 - Question</b> Are there any issues to raise at this block?	<b>3.3 - Responses</b> Y	
<b>3.4 - Question</b> Are there any Ground Maintenance Issues?	<b>3.4 - Responses</b> N	<b>3.4 - Comments</b> 08/10/2025 All cut back
<b>Q 3.4 - Photo</b>		



<b>3.11 - Question</b> Are there any Internal Caretaking issues?	<b>3.11 - Responses</b> N	
<b>Q 3.11 - Photo</b> 		
<b>3.26 - Question</b> Are there any External Caretaking issues?	<b>3.26 - Responses</b> N	
<b>3.37 - Question</b> Are there any Communal Issues?	<b>3.37 - Responses</b> N	
<b>3.49 - Question</b> Are there any Fire Risk Issues?	<b>3.49 - Responses</b> N	
<b>3.57 - Question</b> Are there Communal Repairs to raise?	<b>3.57 - Responses</b> Y	<b>3.57 - Comments</b> 08/10/2025 paint is peeling from wall
<b>Q 3.57 - Photo</b> 		
<b>3.58 - Question</b> Are there any Communal lighting repairs?	<b>3.58 - Responses</b> N	
<b>3.59 - Question</b> Are there any Window repairs?	<b>3.59 - Responses</b> N	
<b>3.60 - Question</b>	<b>3.60 - Responses</b>	

Are there any Door Handles and Closures repairs?	N	
<b>3.61 - Question</b> Are there any Drying Areas repairs?	<b>3.61 - Responses</b> N	
<b>3.62 - Question</b> Are there any Electrical Cupboard Doors repairs?	<b>3.62 - Responses</b> N	
<b>3.63 - Question</b> Are there any Garage Area repairs?	<b>3.63 - Responses</b> N	
<b>3.64 - Question</b> Are there any Graffiti repairs?	<b>3.64 - Responses</b> N	
<b>3.65 - Question</b> Are there any Vandalism repairs?	<b>3.65 - Responses</b> N	
<b>3.66 - Question</b> Are there any Laundry room repairs?	<b>3.66 - Responses</b> N	
<b>3.67 - Question</b> Are there any Flooring repairs?	<b>3.67 - Responses</b> N	

#### 4 Block 3

<b>4.1 - Question</b> Please state the name of the block you are inspecting	<b>4.1 - Responses</b> South Street	
<b>4.2 - Question</b> Please confirm you have checked everything at this block?	<b>4.2 - Responses</b> Y	
<b>4.3 - Question</b> Are there any issues to raise at this block?	<b>4.3 - Responses</b> N	

#### 5 Block 4

<b>5.1 - Question</b> Please state the name of the block you are inspecting	<b>5.1 - Responses</b> Algar Road	
<b>5.2 - Question</b> Please confirm you have checked everything at this block?	<b>5.2 - Responses</b> Y	
<b>5.3 - Question</b> Are there any issues to raise at this block?	<b>5.3 - Responses</b> N	

#### 6 Block 5

<b>6.1 - Question</b> Please state the name of the block you are inspecting	<b>6.1 - Responses</b> Byfield Road	
<b>6.2 - Question</b> Please confirm you have checked everything at this block?	<b>6.2 - Responses</b> Y	
<b>6.3 - Question</b> Are there any issues to raise at this block?	<b>6.3 - Responses</b> N	

#### 7 Block 6

<b>7.1 - Question</b>	<b>7.1 - Responses</b>	
-----------------------	------------------------	--

Please state the name of the block you are inspecting	North Street	
<b>7.2 - Question</b> Please confirm you have checked everything at this block?	<b>7.2 - Responses</b> Y	
<b>7.3 - Question</b> Are there any issues to raise at this block?	<b>7.3 - Responses</b> N	

#### 8 Block 7

<b>8.1 - Question</b> Please state the name of the block you are inspecting	<b>8.1 - Responses</b> Swan Street	
<b>8.2 - Question</b> Please confirm you have checked everything at this block?	<b>8.2 - Responses</b> Y	
<b>8.3 - Question</b> Are there any issues to raise at this block?	<b>8.3 - Responses</b> N	

#### 9 Block 8

<b>9.1 - Question</b> Please state the name of the block you are inspecting	<b>9.1 - Responses</b> Harcourt Close	
<b>9.2 - Question</b> Please confirm you have checked everything at this block?	<b>9.2 - Responses</b> Y	
<b>9.3 - Question</b> Are there any issues to raise at this block?	<b>9.3 - Responses</b> N	

#### 17 Overall Estate Rating

<b>17.1 - Question</b> Please rate the overall Grounds Maintenance of the estate	<b>17.1 - Responses</b> A	
<b>17.2 - Question</b> Please rate the overall Internal Caretaking of the estate	<b>17.2 - Responses</b> A	
<b>17.3 - Question</b> Please rate the overall External Caretaking of the estate	<b>17.3 - Responses</b> A	
<b>17.4 - Question</b> Please rate the overall Communal Issues of the estate	<b>17.4 - Responses</b> A	