




Inspection Report

Company Name LB of Hounslow	Scheduled Start Date 16/10/2025	Inspection Completed on 04/11/2025
Location of Inspection Nursery Close (ESTNURS)	Scheduled Time of Inspection 6:36 PM	Inspection Submission Time 11:03 AM
Inspector that undertook inspection Cynthia Edweh	Template Used Estate Inspection	PDF Sent to cynthia.egweh@hounslow.gov.uk

Inspection Score and Overall Grade		
Actual Score	Max Score	Inspection %
15	20	75
Banding Name Default Banding	Overall Inspection Result Default Banding Item	

1 Inspection Details		
1.1 - Question Type of Inspection	1.1 - Responses Quarterly	
1.2 - Question Area	1.2 - Responses West	
1.3 - Question How many blocks are you inspecting in the estate today?	1.3 - Responses 11	

2 Block 1		
2.1 - Question Please state the name of the block you are inspecting	2.1 - Responses 3-17 Nursery Close	
2.2 - Question Please confirm you have checked everything at this block?	2.2 - Responses Y	
2.3 - Question Are there any issues to raise at this block?	2.3 - Responses Y	
2.4 - Question Are there any Ground Maintenance Issues?	2.4 - Responses N	2.4 - Comments 16/10/2025 Grass area good, just monitor.
Q 2.4 - Photo 	Q 2.4 - Photo 	Q 2.4 - Photo 
Q 2.4 - Photo	Q 2.4 - Photo	

		
<p>2.11 - Question Are there any Internal Caretaking issues?</p>	<p>2.11 - Responses N</p>	<p>2.11 - Comments 16/10/2025 All clean</p>
<p>Q 2.11 - Photo</p> 	<p>Q 2.11 - Photo</p> 	<p>Q 2.11 - Photo</p> 
<p>Q 2.11 - Photo</p> 	<p>Q 2.11 - Photo</p> 	<p>Q 2.11 - Photo</p> 
<p>2.26 - Question Are there any External Caretaking issues?</p>	<p>2.26 - Responses Y</p>	
<p>2.27 - Question Are there any Cleanliness: Grassed Areas issues?</p>	<p>2.27 - Responses N</p>	
<p>2.28 - Question Are there any Paved Areas issues?</p>	<p>2.28 - Responses Y</p>	<p>2.28 - Comments 16/10/2025 Drying area needs flooring</p>
<p>Q 2.28 - Photo</p> 	<p>Q 2.28 - Photo</p>	<p>Q 2.28 - Photo</p>

		
--	---	---


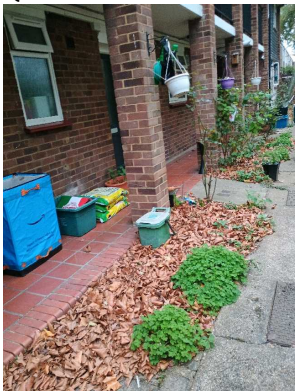
Q 2.28 - Photo

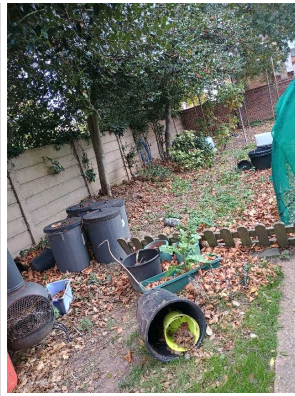
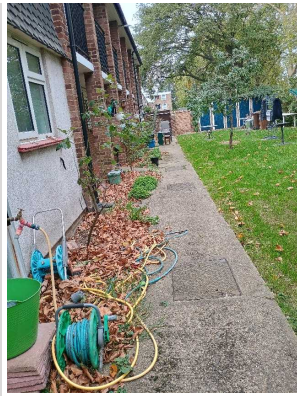


2.29 - Question Are there any Car Parks issues?	2.29 - Responses N	
2.30 - Question Are there any Play Areas (Cleanliness, condition of play equipment, surfaces and fencing) issues?	2.30 - Responses N	
2.31 - Question Are there any Litter Picking issues?	2.31 - Responses N	
2.32 - Question Are there any Bin Rooms issues?	2.32 - Responses N	
2.33 - Question Are there any Bulk Refuse and Graffiti issues?	2.33 - Responses N	
2.34 - Question Are there any Signs issues?	2.34 - Responses N	
2.35 - Question Are there any Numberings issues?	2.35 - Responses N	
2.36 - Question Are there any Notice Boards issues?	2.36 - Responses N	
2.37 - Question Are there any Communal Issues?	2.37 - Responses N	
2.49 - Question Are there any Fire Risk Issues?	2.49 - Responses N	
2.57 - Question Are there Communal Repairs to raise?	2.57 - Responses N	

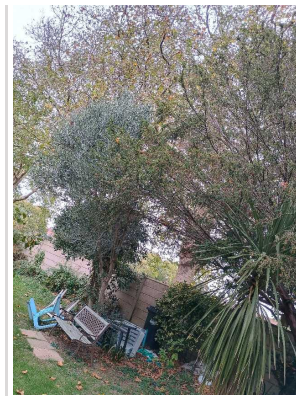
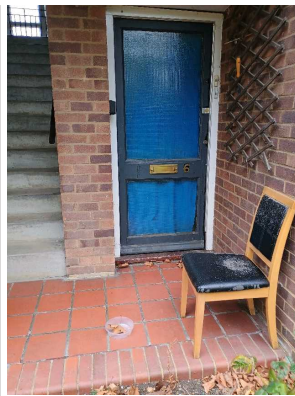
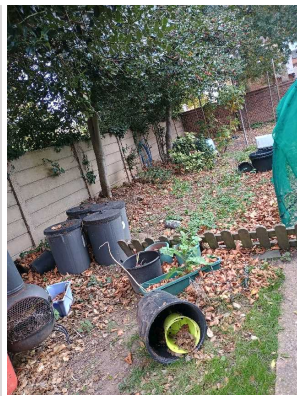
3 Block 2

3.1 - Question Please state the name of the block you are inspecting	3.1 - Responses 2-12 Nursery Close	
--	--	--

3.2 - Question Please confirm you have checked everything at this block?	3.2 - Responses Y	
3.3 - Question Are there any issues to raise at this block?	3.3 - Responses Y	
3.4 - Question Are there any Ground Maintenance Issues?	3.4 - Responses Y	
3.5 - Question Are there Grass Cutting issues?	3.5 - Responses N	
3.6 - Question Are there Weeding issues?	3.6 - Responses N	
3.7 - Question Are there Flower/Shrub Areas issues?	3.7 - Responses N	
3.9 - Question Are there Safety – Foliage & Root Problems issues?	3.9 - Responses N	
3.10 - Question Are there Hedges Trimmed issues?	3.10 - Responses Y	3.10 - Comments 16/10/2025 Trees and plants at the back garden needs cutting back
Q 3.10 - Photo 	Q 3.10 - Photo 	Q 3.10 - Photo 
3.11 - Question Are there any Internal Caretaking issues?	3.11 - Responses N	
3.26 - Question Are there any External Caretaking issues?	3.26 - Responses Y	
3.27 - Question Are there any Cleanliness: Grassed Areas issues?	3.27 - Responses Y	3.27 - Comments 16/10/2025 lots of fallen leaves at the rear of the block
Q 3.27 - Photo 	Q 3.27 - Photo 	Q 3.27 - Photo 
Q 3.27 - Photo	Q 3.27 - Photo	



3.28 - Question Are there any Paved Areas issues?	3.28 - Responses N	
3.29 - Question Are there any Car Parks issues?	3.29 - Responses N	
3.30 - Question Are there any Play Areas (Cleanliness, condition of play equipment, surfaces and fencing) issues?	3.30 - Responses N	
3.31 - Question Are there any Litter Picking issues?	3.31 - Responses N	
3.32 - Question Are there any Bin Rooms issues?	3.32 - Responses N	
3.33 - Question Are there any Bulk Refuse and Graffiti issues?	3.33 - Responses N	
3.34 - Question Are there any Signs issues?	3.34 - Responses N	
3.35 - Question Are there any Numberings issues?	3.35 - Responses N	
3.36 - Question Are there any Notice Boards issues?	3.36 - Responses N	
3.37 - Question Are there any Communal Issues?	3.37 - Responses Y	
3.38 - Question Are there any Abandoned Vehicles?	3.38 - Responses N	
3.39 - Question Are there any Street Lighting Issues?	3.39 - Responses N	
3.40 - Question Are there any Pot holes?	3.40 - Responses N	
3.41 - Question Are there any issues with the Cleanliness of roads/car parks?	3.41 - Responses N	
3.42 - Question Are the notice boards are up to date?	3.42 - Responses N	
3.43 - Question Is there any old signage to report?	3.43 - Responses N	
3.44 - Question Are there any Items stored in drying areas?	3.44 - Responses N	
3.45 - Question Are there any Items stored in Communal areas?	3.45 - Responses N	3.45 - Comments 16/10/2025 Lots of personal items on communal area
Q 3.45 - Photo	Q 3.45 - Photo	Q 3.45 - Photo



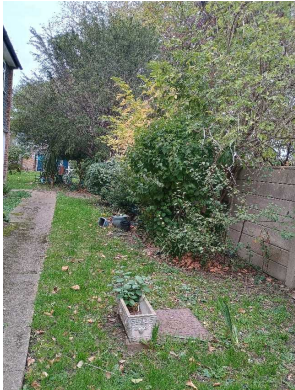


Q 3.45 - Photo



3.46 - Question Is the roof access doors locked?	3.46 - Responses N	
3.47 - Question Are there any Bulk rubbish items?	3.47 - Responses N	
3.48 - Question Are there any Untidy gardens?	3.48 - Responses N	
3.49 - Question Are there any Fire Risk Issues?	3.49 - Responses N	
3.57 - Question Are there Communal Repairs to raise?	3.57 - Responses Y	
3.58 - Question Are there any Communal lighting repairs?	3.58 - Responses N	
3.59 - Question Are there any Window repairs?	3.59 - Responses N	
3.60 - Question Are there any Door Handles and Closures repairs?	3.60 - Responses N	
3.61 - Question Are there any Drying Areas repairs?	3.61 - Responses N	
3.62 - Question Are there any Electrical Cupboard Doors repairs?	3.62 - Responses N	
3.63 - Question Are there any Garage Area repairs?	3.63 - Responses N	
3.64 - Question Are there any Graffiti repairs?	3.64 - Responses N	
3.65 - Question Are there any Vandalism repairs?	3.65 - Responses N	
3.66 - Question Are there any Laundry room repairs?	3.66 - Responses N	

3.67 - Question Are there any Flooring repairs?	3.67 - Responses Y	3.67 - Comments 16/10/2025 Brick broken around the manhole in front of the block
Q 3.67 - Photo 	Q 3.67 - Photo 	

4 Block 3		
4.1 - Question Please state the name of the block you are inspecting	4.1 - Responses 14-24 Nursery Close	
4.2 - Question Please confirm you have checked everything at this block?	4.2 - Responses Y	
4.3 - Question Are there any issues to raise at this block?	4.3 - Responses Y	
4.4 - Question Are there any Ground Maintenance Issues?	4.4 - Responses Y	
4.5 - Question Are there Grass Cutting issues?	4.5 - Responses N	
4.6 - Question Are there Weeding issues?	4.6 - Responses N	
4.7 - Question Are there Flower/Shrub Areas issues?	4.7 - Responses N	
4.8 - Question Are there Trees: Pruning issues?	4.8 - Responses Y	4.8 - Comments 16/10/2025 Trees at the rear of the block needs cutting back.
Q 4.8 - Photo 	Q 4.8 - Photo 	Q 4.8 - Photo 
Q 4.8 - Photo	Q 4.8 - Photo	Q 4.8 - Photo

		
4.9 - Question Are there Safety – Foliage & Root Problems issues?	4.9 - Responses N	
4.10 - Question Are there Hedges Trimmed issues?	4.10 - Responses N	
4.11 - Question Are there any Internal Caretaking issues?	4.11 - Responses N	
4.26 - Question Are there any External Caretaking issues?	4.26 - Responses N	
4.37 - Question Are there any Communal Issues?	4.37 - Responses N	
4.49 - Question Are there any Fire Risk Issues?	4.49 - Responses N	
4.57 - Question Are there Communal Repairs to raise?	4.57 - Responses N	

5 Block 4

5.1 - Question Please state the name of the block you are inspecting	5.1 - Responses 26-36 Fern grove	
5.2 - Question Please confirm you have checked everything at this block?	5.2 - Responses Y	
5.3 - Question Are there any issues to raise at this block?	5.3 - Responses N	

6 Block 5

6.1 - Question Please state the name of the block you are inspecting	6.1 - Responses 19-25 Nursery Close	
6.2 - Question Please confirm you have checked everything at this block?	6.2 - Responses Y	
6.3 - Question Are there any issues to raise at this block?	6.3 - Responses Y	
6.4 - Question Are there any Ground Maintenance Issues?	6.4 - Responses N	6.4 - Comments 04/11/2025 Grass area to be monitored
Q 6.4 - Photo	Q 6.4 - Photo	

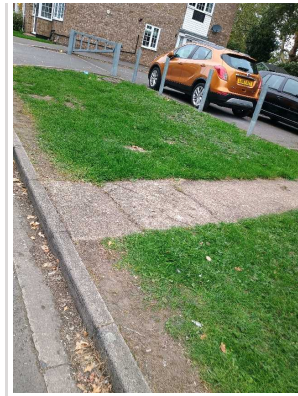
		
<p>6.11 - Question Are there any Internal Caretaking issues?</p>	<p>6.11 - Responses N</p>	
<p>6.26 - Question Are there any External Caretaking issues?</p>	<p>6.26 - Responses N</p>	
<p>6.37 - Question Are there any Communal Issues?</p>	<p>6.37 - Responses Y</p>	<p>6.37 - Comments 04/11/2025 Rear garden needs moss removal</p>
<p>Q 6.37 - Photo</p> 	<p>Q 6.37 - Photo</p> 	<p>Q 6.37 - Photo</p> 
<p>Q 6.37 - Photo</p> 	<p>Q 6.37 - Photo</p> 	<p>Q 6.37 - Photo</p> 
<p>Q 6.37 - Photo</p>		



6.38 - Question Are there any Abandoned Vehicles?	6.38 - Responses N	
6.39 - Question Are there any Street Lighting Issues?	6.39 - Responses N	
6.40 - Question Are there any Pot holes?	6.40 - Responses N	
6.41 - Question Are there any issues with the Cleanliness of roads/car parks?	6.41 - Responses N	
6.42 - Question Are the notice boards are up to date?	6.42 - Responses N	
6.43 - Question Is there any old signage to report?	6.43 - Responses N	
6.44 - Question Are there any Items stored in drying areas?	6.44 - Responses N	
6.45 - Question Are there any Items stored in Communal areas?	6.45 - Responses N	
6.46 - Question Is the roof access doors locked?	6.46 - Responses N	
6.47 - Question Are there any Bulk rubbish items?	6.47 - Responses N	
6.48 - Question Are there any Untidy gardens?	6.48 - Responses N	
6.49 - Question Are there any Fire Risk Issues?	6.49 - Responses N	
6.57 - Question Are there Communal Repairs to raise?	6.57 - Responses N	

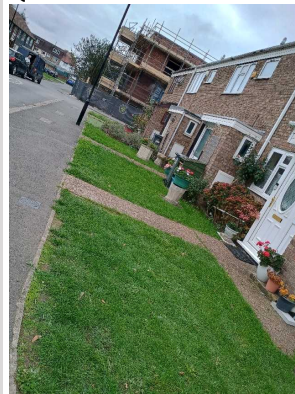
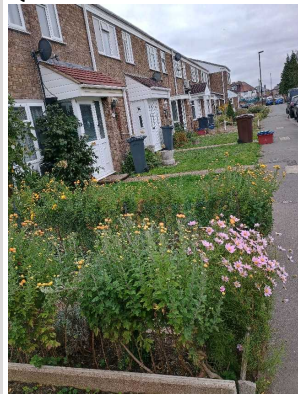
7 Block 6

7.1 - Question Please state the name of the block you are inspecting	7.1 - Responses 26-38 Nursery Close	
7.2 - Question Please confirm you have checked everything at this block?	7.2 - Responses Y	
7.3 - Question Are there any issues to raise at this block?	7.3 - Responses N	7.3 - Comments 04/11/2025 street properties
Q 7.3 - Photo	Q 7.3 - Photo	Q 7.3 - Photo




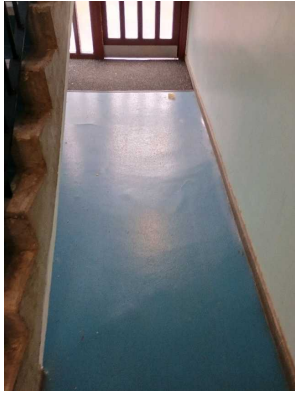
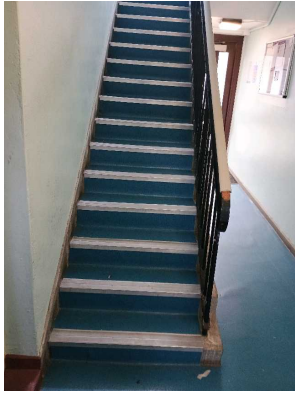


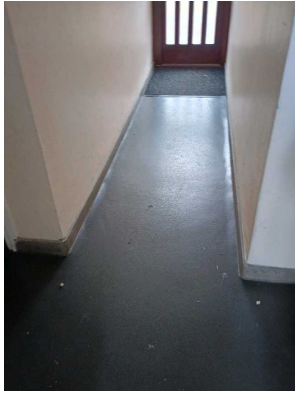
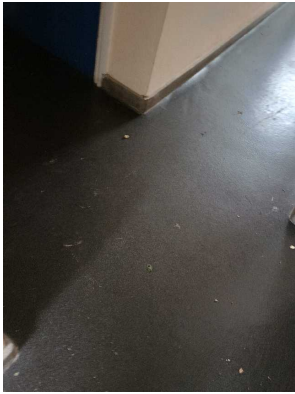
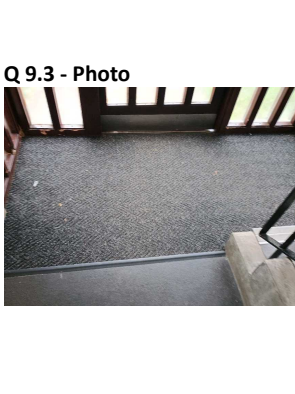
Q 7.3 - Photo

Q 7.3 - Photo



8 Block 7		
8.1 - Question Please state the name of the block you are inspecting	8.1 - Responses 2-12 Fern grove	
8.2 - Question Please confirm you have checked everything at this block?	8.2 - Responses Y	
8.3 - Question Are there any issues to raise at this block?	8.3 - Responses N	

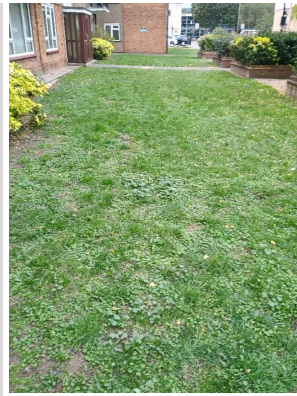
9 Block 8		
9.1 - Question Please state the name of the block you are inspecting	9.1 - Responses 14-24 Fern grove	
9.2 - Question Please confirm you have checked everything at this block?	9.2 - Responses Y	
9.3 - Question Are there any issues to raise at this block?	9.3 - Responses N	
Q 9.3 - Photo 	Q 9.3 - Photo	Q 9.3 - Photo

		
Q 9.3 - Photo 	Q 9.3 - Photo 	Q 9.3 - Photo 
Q 9.3 - Photo 	Q 9.3 - Photo 	

10 Block 9		
10.1 - Question Please state the name of the block you are inspecting	10.1 - Responses 26-36 Fern grove	
10.2 - Question Please confirm you have checked everything at this block?	10.2 - Responses Y	
10.3 - Question Are there any issues to raise at this block?	10.3 - Responses N	
Q 10.3 - Photo	Q 10.3 - Photo	Q 10.3 - Photo



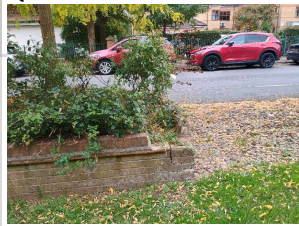
Q 10.3 - Photo



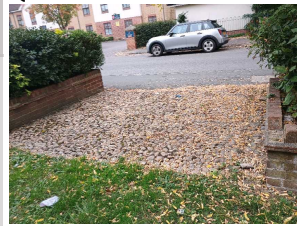
Q 10.3 - Photo



Q 10.3 - Photo



Q 10.3 - Photo



Q 10.3 - Photo



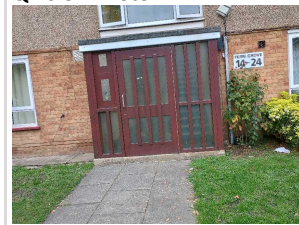
Q 10.3 - Photo



Q 10.3 - Photo



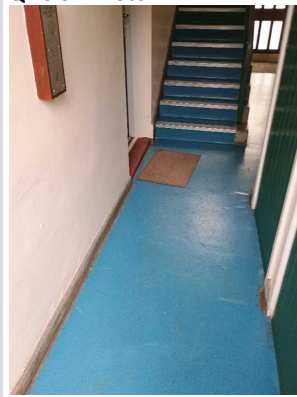
Q 10.3 - Photo



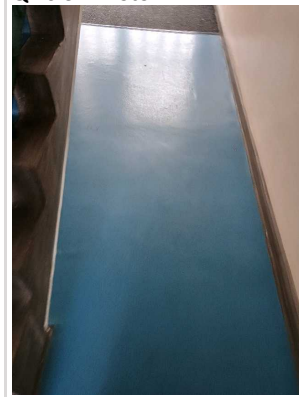
Q 10.3 - Photo



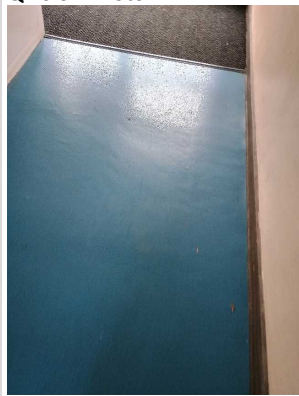
Q 10.3 - Photo



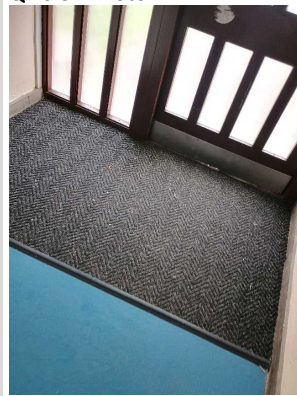
Q 10.3 - Photo



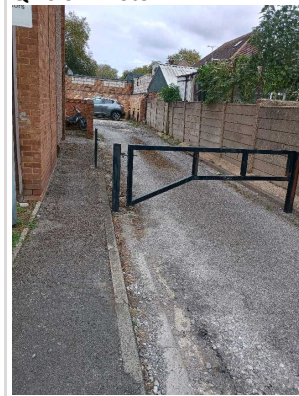
Q 10.3 - Photo



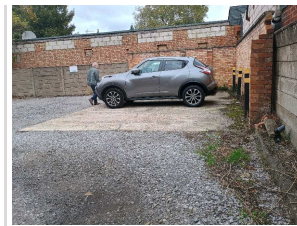
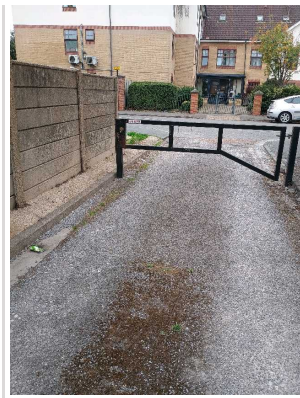
Q 10.3 - Photo

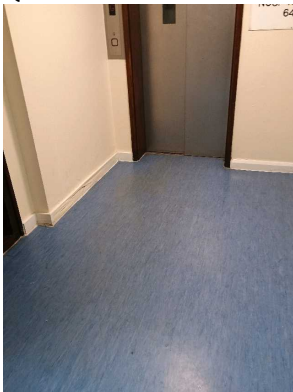
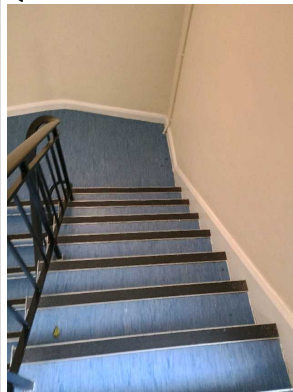
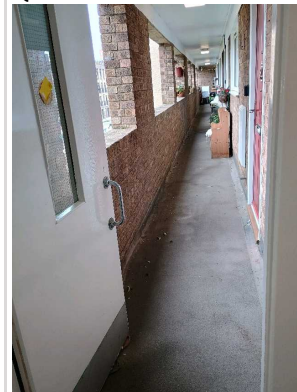

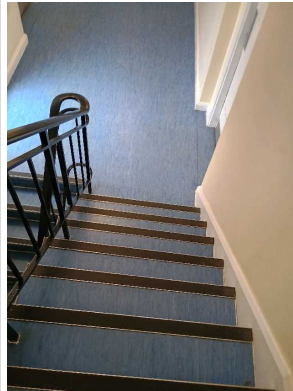
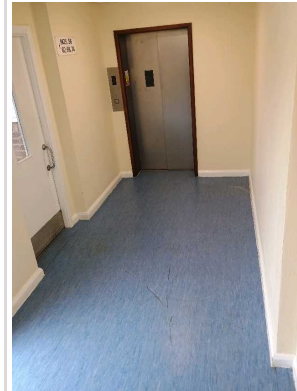



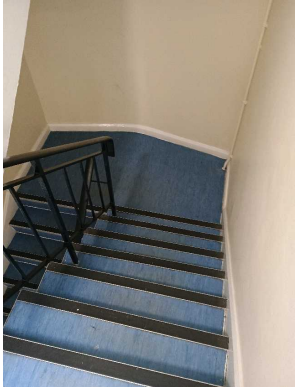
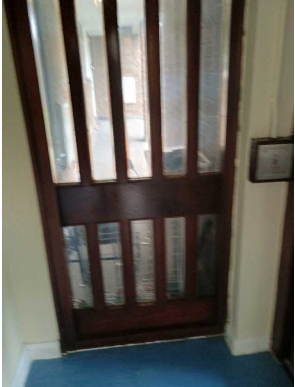





Q 10.3 - Photo







Q 10.3 - Photo




11 Block 10		
11.1 - Question Please state the name of the block you are inspecting	11.1 - Responses 42-76 Nursery Close	
11.2 - Question Please confirm you have checked everything at this block?	11.2 - Responses Y	
11.3 - Question Are there any issues to raise at this block?	11.3 - Responses Y	
11.4 - Question Are there any Ground Maintenance Issues?	11.4 - Responses N	
11.11 - Question Are there any Internal Caretaking issues?	11.11 - Responses N	11.11 - Comments 04/11/2025 first and second floor clean.
Q 11.11 - Photo 	Q 11.11 - Photo 	Q 11.11 - Photo 
Q 11.11 - Photo 	Q 11.11 - Photo 	Q 11.11 - Photo 

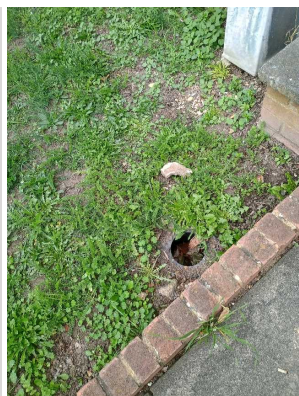
<p>Q 11.11 - Photo</p> 	<p>Q 11.11 - Photo</p> 	<p>Q 11.11 - Photo</p> 
<p>11.26 - Question Are there any External Caretaking issues?</p>	<p>11.26 - Responses Y</p>	<p>11.26 - Comments 04/11/2025 Canopy at the main door entrance needs cleaning.</p>
<p>Q 11.26 - Photo</p> 	<p>Q 11.26 - Photo</p> 	
<p>11.27 - Question Are there any Cleanliness: Grassed Areas issues?</p>	<p>11.27 - Responses N</p>	
<p>11.28 - Question Are there any Paved Areas issues?</p>	<p>11.28 - Responses N</p>	
<p>11.29 - Question Are there any Car Parks issues?</p>	<p>11.29 - Responses N</p>	<p>11.29 - Comments 04/11/2025 car park ok</p>
<p>Q 11.29 - Photo</p> 	<p>Q 11.29 - Photo</p> 	<p>Q 11.29 - Photo</p> 
<p>11.30 - Question Are there any Play Areas (Cleanliness, condition of play equipment, surfaces and fencing) issues?</p>	<p>11.30 - Responses N</p>	
<p>11.31 - Question Are there any Litter Picking issues?</p>	<p>11.31 - Responses N</p>	
<p>11.32 - Question Are there any Bin Rooms issues?</p>	<p>11.32 - Responses N</p>	

Q 11.32 - Photo 	Q 11.32 - Photo 	
11.33 - Question Are there any Bulk Refuse and Graffiti issues?	11.33 - Responses N	
11.34 - Question Are there any Signs issues?	11.34 - Responses N	
11.35 - Question Are there any Numberings issues?	11.35 - Responses N	
11.36 - Question Are there any Notice Boards issues?	11.36 - Responses N	
Q 11.36 - Photo 	Q 11.36 - Photo 	
11.37 - Question Are there any Communal Issues?	11.37 - Responses N	
11.49 - Question Are there any Fire Risk Issues?	11.49 - Responses N	
11.57 - Question Are there Communal Repairs to raise?	11.57 - Responses N	

12 Block 11		
12.1 - Question Please state the name of the block you are inspecting	12.1 - Responses 38-48 Fern grove	
12.2 - Question Please confirm you have checked everything at this block?	12.2 - Responses Y	
12.3 - Question Are there any issues to raise at this block?	12.3 - Responses Y	
12.4 - Question Are there any Ground Maintenance Issues?	12.4 - Responses N	12.4 - Comments 04/11/2025 To monitor
12.11 - Question Are there any Internal Caretaking issues?	12.11 - Responses Y	
12.12 - Question Are there any Cleanliness: Stairs issues?	12.12 - Responses N	

12.13 - Question Are there any Landings issues?	12.13 - Responses N	
12.14 - Question Are there any Entrances issues?	12.14 - Responses Y	12.14 - Comments 04/11/2025 Front mat needs sweeping
Q 12.14 - Photo 	Q 12.14 - Photo 	
12.15 - Question Are there any Lifts issues?	12.15 - Responses N	
12.16 - Question Are there any Door and Window Glazing issues?	12.16 - Responses N	
12.17 - Question Are there any Ledges issues?	12.17 - Responses N	
12.18 - Question Are there any Walls issues?	12.18 - Responses N	
12.19 - Question Are there any Lighting issues?	12.19 - Responses N	
12.20 - Question Are there any Handrails secure issues?	12.20 - Responses N	
12.21 - Question Are there any Chute Rooms issues?	12.21 - Responses N	
12.22 - Question Are there any Signage issues?	12.22 - Responses N	
12.23 - Question Are there any Graffiti issues?	12.23 - Responses N	
12.24 - Question Are there any issues with cleaning completion sheets?	12.24 - Responses N	
12.25 - Question Are there any issues with Notice Boards?	12.25 - Responses N	
12.26 - Question Are there any External Caretaking issues?	12.26 - Responses N	
12.37 - Question Are there any Communal Issues?	12.37 - Responses N	12.37 - Comments 04/11/2025 Rear garden covered with moss
Q 12.37 - Photo 	Q 12.37 - Photo	Q 12.37 - Photo

		
12.49 - Question Are there any Fire Risk Issues?	12.49 - Responses N	
12.57 - Question Are there Communal Repairs to raise?	12.57 - Responses Y	
12.58 - Question Are there any Communal lighting repairs?	12.58 - Responses N	
12.59 - Question Are there any Window repairs?	12.59 - Responses N	
12.60 - Question Are there any Door Handles and Closures repairs?	12.60 - Responses Y	12.60 - Comments 04/11/2025 Brick coming off on the wall behind the block
Q 12.60 - Photo 	Q 12.60 - Photo 	Q 12.60 - Photo 
12.61 - Question Are there any Drying Areas repairs?	12.61 - Responses N	
12.62 - Question Are there any Electrical Cupboard Doors repairs?	12.62 - Responses N	
12.63 - Question Are there any Garage Area repairs?	12.63 - Responses N	
12.64 - Question Are there any Graffiti repairs?	12.64 - Responses N	
12.65 - Question Are there any Vandalism repairs?	12.65 - Responses N	
12.66 - Question Are there any Laundry room repairs?	12.66 - Responses N	
12.67 - Question Are there any Flooring repairs?	12.67 - Responses Y	12.67 - Comments 04/11/2025 hole in front of block
Q 12.67 - Photo		



17 Overall Estate Rating

17.1 - Question Please rate the overall Grounds Maintenance of the estate	17.1 - Responses B	
17.2 - Question Please rate the overall Internal Caretaking of the estate	17.2 - Responses B	
17.3 - Question Please rate the overall External Caretaking of the estate	17.3 - Responses B	
17.4 - Question Please rate the overall Communal Issues of the estate	17.4 - Responses B	
17.5 - Question Please rate the overall Fire Risks of the estate	17.5 - Responses B	