

<b>Company Name</b> LB of Hounslow	<b>Scheduled Start Date</b> 23/10/2025	<b>Inspection Completed on</b> 12/11/2025
<b>Location of Inspection</b> Wicksteed House 1 To 88	<b>Scheduled Time of Inspection</b> 10:42 AM	<b>Inspection Submission Time</b> 4:36 PM
<b>Inspector that undertook inspection</b> Nathan Stradling	<b>Template Used</b> Estate Inspection	<b>PDF Sent to</b> nathan.stradling1@hounslow.gov.uk

## Inspection Score and Overall Grade

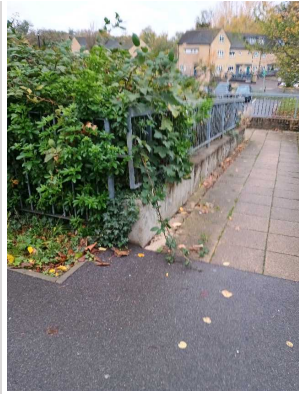
<b>Actual Score</b> 13	<b>Max Score</b> 16	<b>Inspection %</b> 81
<b>Banding Name</b> Default Banding	<b>Overall Inspection Result</b> Default Banding Item	

## 1 Inspection Details

<b>1.1 - Question</b> Type of Inspection	<b>1.1 - Responses</b> Quarterly	
<b>1.2 - Question</b> Area	<b>1.2 - Responses</b> East	
<b>1.3 - Question</b> How many blocks are you inspecting in the estate today?	<b>1.3 - Responses</b> 1	

## 2 Block 1

<b>2.1 - Question</b> Please state the name of the block you are inspecting	<b>2.1 - Responses</b> Wicksteed House	
<b>2.2 - Question</b> Please confirm you have checked everything at this block?	<b>2.2 - Responses</b> N	
<b>2.3 - Question</b> Are there any issues to raise at this block?	<b>2.3 - Responses</b> Y	
<b>2.4 - Question</b> Are there any Ground Maintenance Issues?	<b>2.4 - Responses</b> N	
<b>Q 2.4 - Photo</b>	<b>Q 2.4 - Photo</b>	



**2.11 - Question**  
Are there any Internal Caretaking issues?

**2.11 - Responses**  
Y

**2.12 - Question**  
Are there any Cleanliness: Stairs issues?

**2.12 - Responses**  
Y

**Q 2.12 - Photo**



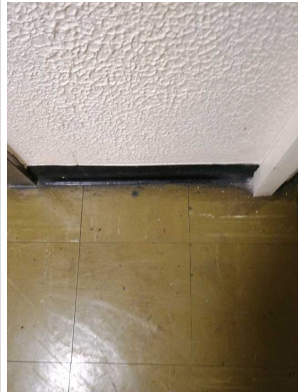
**2.13 - Question**  
Are there any Landings issues?

**2.13 - Responses**  
Y

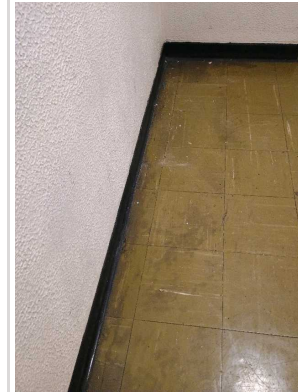
**Q 2.13 - Photo**



**Q 2.13 - Photo**



**Q 2.13 - Photo**



**2.14 - Question**  
Are there any Entrances issues?

**2.14 - Responses**  
Y

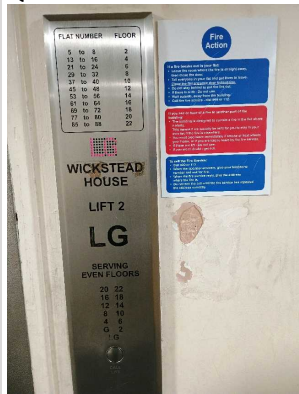
**Q 2.14 - Photo**



**2.15 - Question**  
Are there any Lifts issues?

**2.15 - Responses**  
N

**Q 2.15 - Photo**



**2.16 - Question**  
Are there any Door and Window Glazing issues?

**2.16 - Responses**  
N

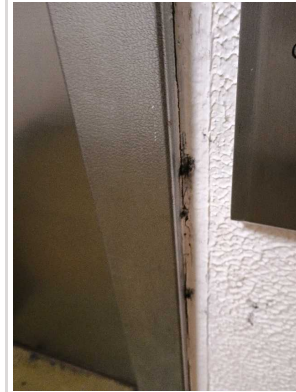
**Q 2.16 - Photo**



**Q 2.16 - Photo**



**Q 2.16 - Photo**



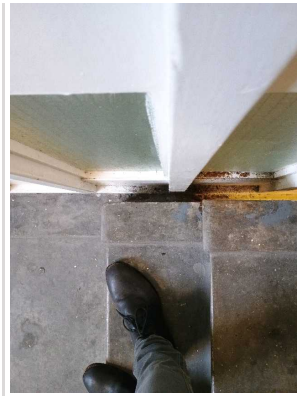
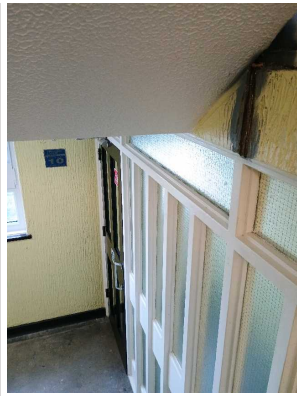
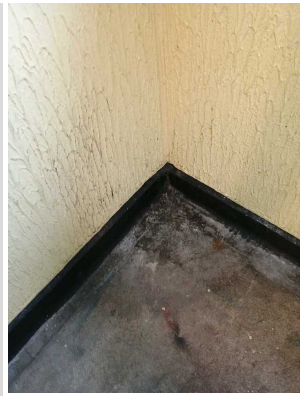
**2.17 - Question**  
Are there any Ledges issues?

**2.17 - Responses**  
Y

**Q 2.17 - Photo**

**Q 2.17 - Photo**

**Q 2.17 - Photo**



**2.18 - Question**  
Are there any Walls issues?

**2.18 - Responses**  
N

**Q 2.18 - Photo**



**2.19 - Question**  
Are there any Lighting issues?

**2.19 - Responses**  
N

**2.20 - Question**  
Are there any Handrails secure issues?

**2.20 - Responses**  
N

**2.21 - Question**  
Are there any Chute Rooms issues?

**2.21 - Responses**  
N

**2.22 - Question**  
Are there any Signage issues?

**2.22 - Responses**  
N

**2.23 - Question**  
Are there any Graffiti issues?

**2.23 - Responses**  
N

**2.24 - Question**  
Are there any issues with cleaning completion sheets?

**2.24 - Responses**  
N

**2.25 - Question**  
Are there any issues with Notice Boards?

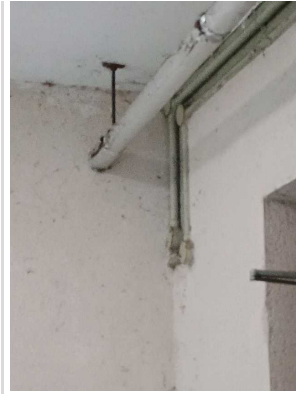
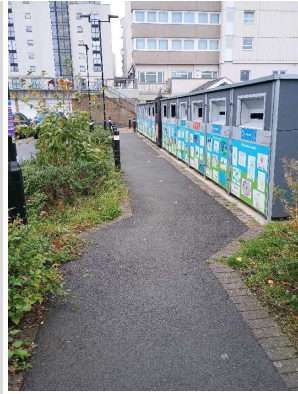
**2.25 - Responses**  
N


**2.26 - Question**  
Are there any External Caretaking issues?



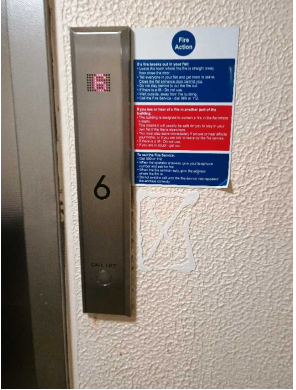
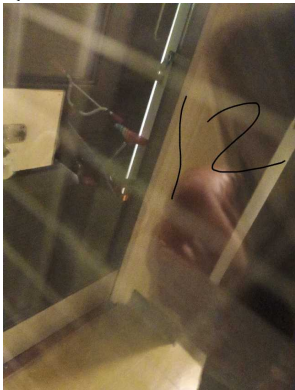
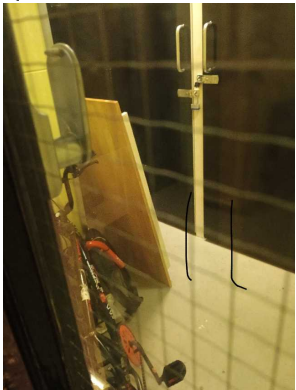
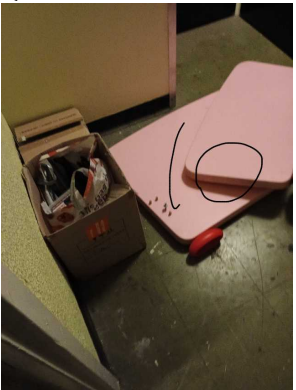

**2.26 - Responses**  
Y

**Q 2.26 - Photo**

**Q 2.26 - Photo**

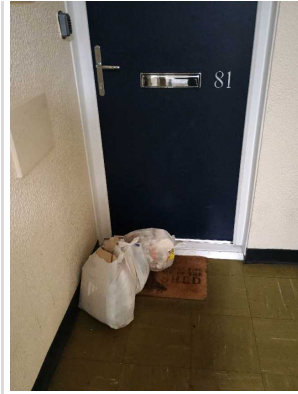


<p><b>2.27 - Question</b> Are there any Cleanliness: Grassed Areas issues?</p>	<p><b>2.27 - Responses</b> N</p>	
<p><b>2.28 - Question</b> Are there any Paved Areas issues?</p>	<p><b>2.28 - Responses</b> Y</p>	
<p><b>2.29 - Question</b> Are there any Car Parks issues?</p>	<p><b>2.29 - Responses</b> N</p>	
<p><b>2.30 - Question</b> Are there any Play Areas (Cleanliness, condition of play equipment, surfaces and fencing) issues?</p>	<p><b>2.30 - Responses</b> N</p>	
<p><b>2.31 - Question</b> Are there any Litter Picking issues?</p>	<p><b>2.31 - Responses</b> N</p>	
<p><b>2.32 - Question</b> Are there any Bin Rooms issues?</p>	<p><b>2.32 - Responses</b> N</p>	
<p><b>2.33 - Question</b> Are there any Bulk Refuse and Graffiti issues?</p>	<p><b>2.33 - Responses</b> Y</p>	
<p><b>Q 2.33 - Photo</b></p> 		
<p><b>2.34 - Question</b> Are there any Signs issues?</p>	<p><b>2.34 - Responses</b> N</p>	
<p><b>2.35 - Question</b> Are there any Numberings issues?</p>	<p><b>2.35 - Responses</b> N</p>	
<p><b>2.36 - Question</b> Are there any Notice Boards issues?</p>	<p><b>2.36 - Responses</b> Y</p>	
<p><b>2.37 - Question</b> Are there any Communal Issues?</p>	<p><b>2.37 - Responses</b> Y</p>	
<p><b>2.38 - Question</b> Are there any Abandoned Vehicles?</p>	<p><b>2.38 - Responses</b> N</p>	
<p><b>2.39 - Question</b> Are there any Street Lighting Issues?</p>	<p><b>2.39 - Responses</b> N</p>	
<p><b>2.40 - Question</b></p>	<p><b>2.40 - Responses</b></p>	

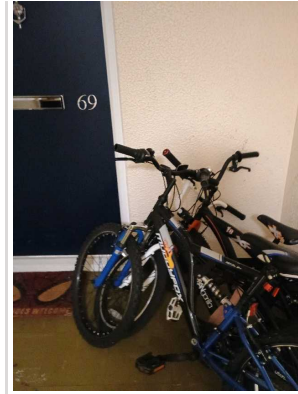
Are there any Pot holes?	N	
<b>2.41 - Question</b> Are there any issues with the Cleanliness of roads/car parks?	<b>2.41 - Responses</b> N	
<b>2.42 - Question</b> Are the notice boards are up to date?	<b>2.42 - Responses</b> Y	
<b>2.43 - Question</b> Is there any old signage to report?	<b>2.43 - Responses</b> Y	
<b>Q 2.43 - Photo</b> 	<b>Q 2.43 - Photo</b> 	<b>Q 2.43 - Photo</b> 
<b>2.44 - Question</b> Are there any Items stored in drying areas?	<b>2.44 - Responses</b> Y	
<b>Q 2.44 - Photo</b> 	<b>Q 2.44 - Photo</b> 	<b>Q 2.44 - Photo</b> 
<b>Q 2.44 - Photo</b> 		
<b>2.45 - Question</b> Are there any Items stored in Communal areas?	<b>2.45 - Responses</b> Y	
<b>Q 2.45 - Photo</b>	<b>Q 2.45 - Photo</b>	<b>Q 2.45 - Photo</b>



Q 2.45 - Photo



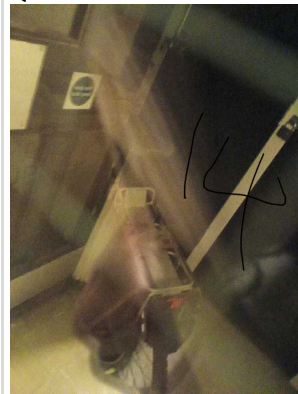
Q 2.45 - Photo



Q 2.45 - Photo



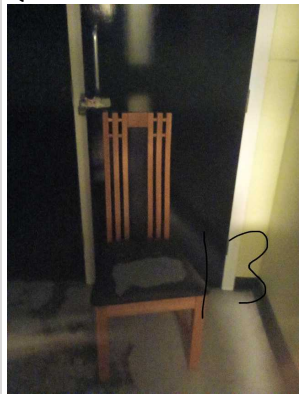
Q 2.45 - Photo



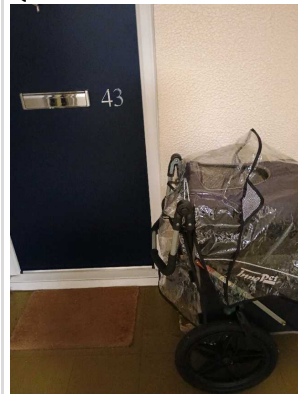
Q 2.45 - Photo



Q 2.45 - Photo



Q 2.45 - Photo



Q 2.45 - Photo



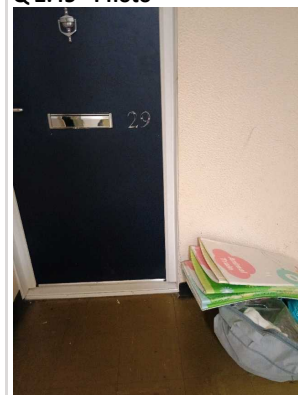
Q 2.45 - Photo



Q 2.45 - Photo



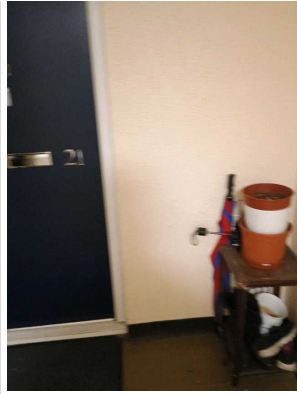
Q 2.45 - Photo



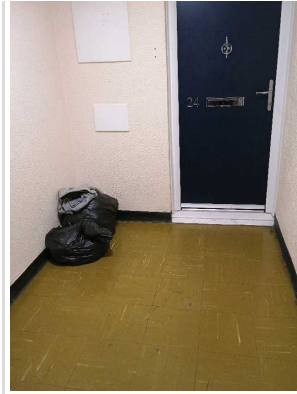
Q 2.45 - Photo



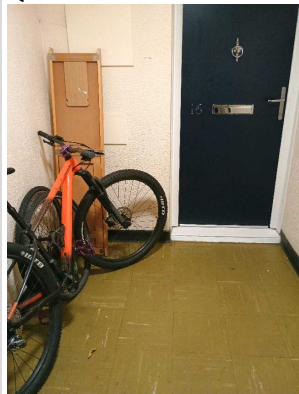
Q 2.45 - Photo



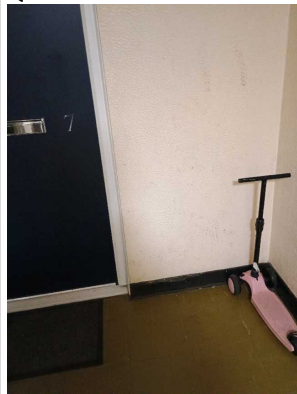
Q 2.45 - Photo



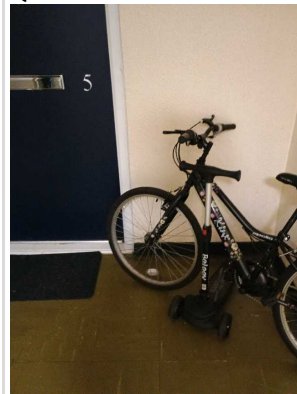
Q 2.45 - Photo



Q 2.45 - Photo



Q 2.45 - Photo



Q 2.45 - Photo



**2.46 - Question**  
Is the roof access doors locked?

**2.46 - Responses**  
Y

**2.47 - Question**  
Are there any Bulk rubbish items?

**2.47 - Responses**  
N

**2.48 - Question**  
Are there any Untidy gardens?

**2.48 - Responses**  
N

**2.49 - Question**  
Are there any Fire Risk Issues?

**2.49 - Responses**  
N

**2.57 - Question**  
Are there Communal Repairs to raise?

**2.57 - Responses**  
Y

Q 2.57 - Photo

Q 2.57 - Photo

Q 2.57 - Photo

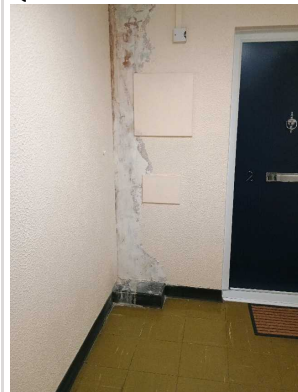




Q 2.57 - Photo

Q 2.57 - Photo

Q 2.57 - Photo



2.58 - Question  
Are there any Communal lighting repairs?

2.58 - Responses  
N

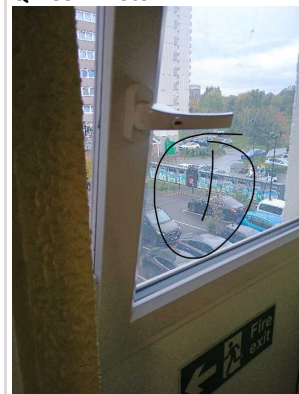
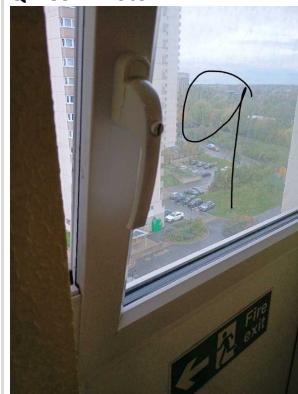
2.59 - Question  
Are there any Window repairs?

2.59 - Responses  
N

Q 2.59 - Photo

Q 2.59 - Photo

Q 2.59 - Photo



2.60 - Question  
Are there any Door Handles and Closures repairs?

2.60 - Responses  
N

2.61 - Question  
Are there any Drying Areas repairs?

2.61 - Responses  
N

2.62 - Question  
Are there any Electrical Cupboard Doors repairs?

2.62 - Responses  
N

Q 2.62 - Photo

Q 2.62 - Photo



**2.63 - Question**  
Are there any Garage Area repairs?

**2.63 - Responses**  
N

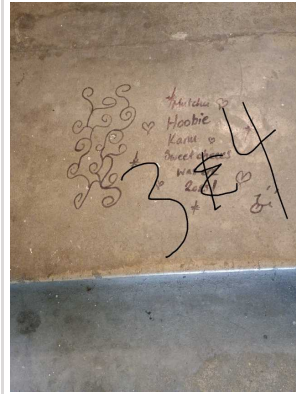
**2.64 - Question**  
Are there any Graffiti repairs?

**2.64 - Responses**  
N

**Q 2.64 - Photo**



**Q 2.64 - Photo**



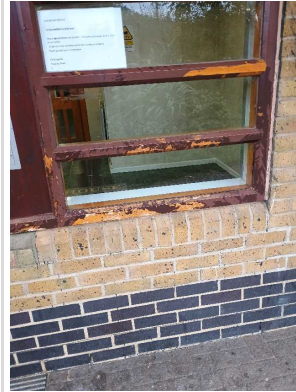
**2.65 - Question**  
Are there any Vandalism repairs?

**2.65 - Responses**  
Y

**Q 2.65 - Photo**



**Q 2.65 - Photo**



**2.66 - Question**  
Are there any Laundry room repairs?

**2.66 - Responses**  
N

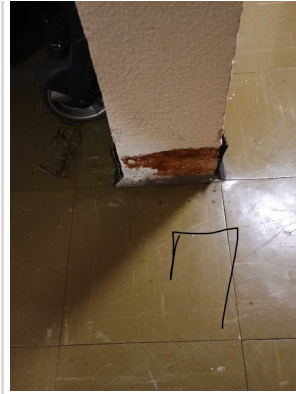
**2.67 - Question**  
Are there any Flooring repairs?

**2.67 - Responses**  
Y

**Q 2.67 - Photo**

**Q 2.67 - Photo**

**Q 2.67 - Photo**



### 17 Overall Estate Rating

<p><b>17.1 - Question</b> Please rate the overall Grounds Maintenance of the estate</p>	<p><b>17.1 - Responses</b> A</p>	
<p><b>17.2 - Question</b> Please rate the overall Internal Caretaking of the estate</p>	<p><b>17.2 - Responses</b> C</p>	
<p><b>17.3 - Question</b> Please rate the overall External Caretaking of the estate</p>	<p><b>17.3 - Responses</b> A</p>	
<p><b>17.4 - Question</b> Please rate the overall Communal Issues of the estate</p>	<p><b>17.4 - Responses</b> B</p>	