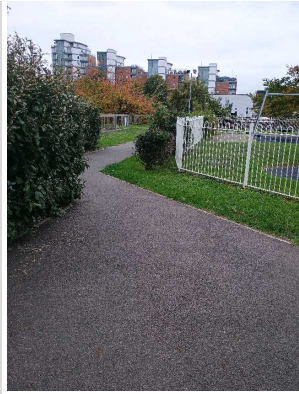


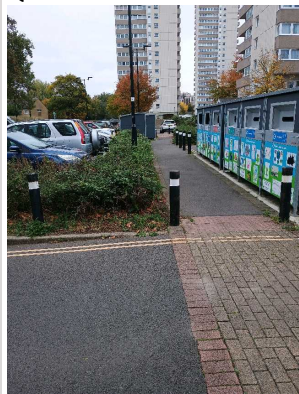
Company Name LB of Hounslow	Scheduled Start Date 14/10/2025	Inspection Completed on 16/10/2025
Location of Inspection Boulton House 1 To 88	Scheduled Time of Inspection 11:11 AM	Inspection Submission Time 11:52 AM
Inspector that undertook inspection Nathan Stradling	Template Used Estate Inspection	PDF Sent to nathan.stradling1@hounslow.gov.uk

Inspection Score and Overall Grade		
Actual Score	Max Score	Inspection %
16	16	100
Banding Name Default Banding	Overall Inspection Result Default Banding Item	

1 Inspection Details		
1.1 - Question Type of Inspection	1.1 - Responses Quarterly	
1.2 - Question Area	1.2 - Responses East	
1.3 - Question How many blocks are you inspecting in the estate today?	1.3 - Responses 1	

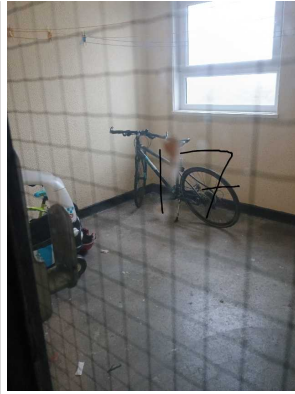
2 Block 1		
2.1 - Question Please state the name of the block you are inspecting	2.1 - Responses Boulton House	
2.2 - Question Please confirm you have checked everything at this block?	2.2 - Responses Y	
2.3 - Question Are there any issues to raise at this block?	2.3 - Responses Y	
2.4 - Question Are there any Ground Maintenance Issues?	2.4 - Responses N	
Q 2.4 - Photo		



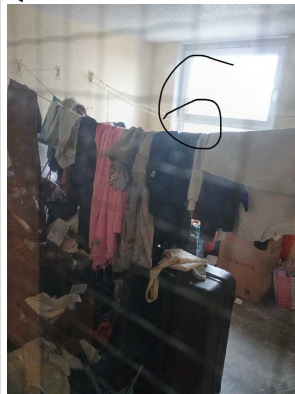
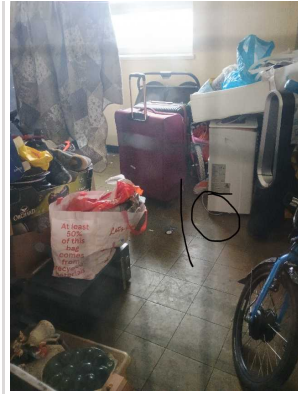
<p>2.11 - Question Are there any Internal Caretaking issues?</p>	<p>2.11 - Responses N</p>	
<p>2.26 - Question Are there any External Caretaking issues?</p>	<p>2.26 - Responses N</p>	
<p>Q 2.26 - Photo</p> 		
<p>2.37 - Question Are there any Communal Issues?</p>	<p>2.37 - Responses Y</p>	
<p>2.38 - Question Are there any Abandoned Vehicles?</p>	<p>2.38 - Responses N</p>	
<p>2.39 - Question Are there any Street Lighting Issues?</p>	<p>2.39 - Responses N</p>	
<p>2.40 - Question Are there any Pot holes?</p>	<p>2.40 - Responses N</p>	
<p>2.41 - Question Are there any issues with the Cleanliness of roads/car parks?</p>	<p>2.41 - Responses N</p>	
<p>2.42 - Question Are the notice boards are up to date?</p>	<p>2.42 - Responses Y</p>	
<p>2.43 - Question Is there any old signage to report?</p>	<p>2.43 - Responses N</p>	
<p>2.44 - Question Are there any Items stored in drying areas?</p>	<p>2.44 - Responses Y</p>	
<p>Q 2.44 - Photo</p>	<p>Q 2.44 - Photo</p>	<p>Q 2.44 - Photo</p>



Q 2.44 - Photo



Q 2.44 - Photo



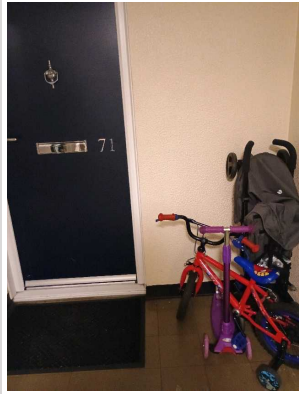
2.45 - Question

Are there any Items stored in Communal areas?

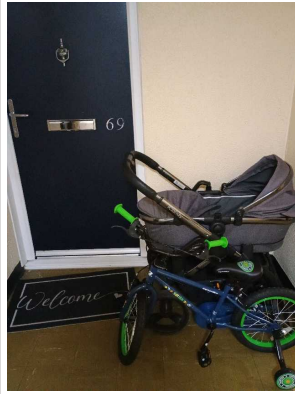
2.45 - Responses

Y

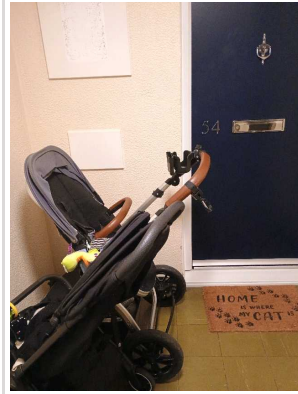
Q 2.45 - Photo



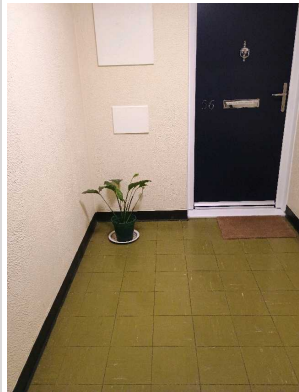
Q 2.45 - Photo



Q 2.45 - Photo



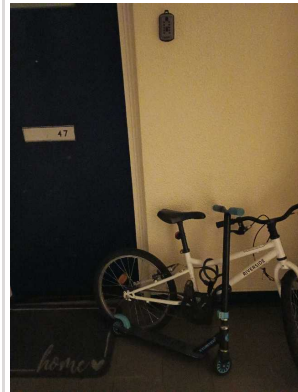
Q 2.45 - Photo



Q 2.45 - Photo



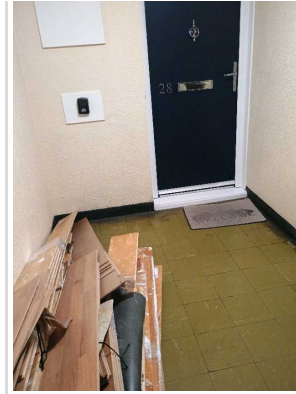
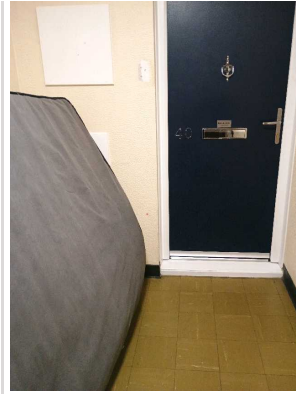
Q 2.45 - Photo



Q 2.45 - Photo

Q 2.45 - Photo

Q 2.45 - Photo



Q 2.45 - Photo



2.46 - Question Is the roof access doors locked?	2.46 - Responses Y	
2.47 - Question Are there any Bulk rubbish items?	2.47 - Responses N	
2.48 - Question Are there any Untidy gardens?	2.48 - Responses N	
2.49 - Question Are there any Fire Risk Issues?	2.49 - Responses N	
2.57 - Question Are there Communal Repairs to raise?	2.57 - Responses N	

17 Overall Estate Rating

17.1 - Question Please rate the overall Grounds Maintenance of the estate	17.1 - Responses A	
17.2 - Question Please rate the overall Internal Caretaking of the estate	17.2 - Responses A	
17.3 - Question Please rate the overall External Caretaking of the estate	17.3 - Responses A	
17.4 - Question Please rate the overall Communal Issues of the estate	17.4 - Responses A	