

# Inspection Report

<b>Company Name</b> LB of Hounslow	<b>Scheduled Start Date</b> 09/10/2025	<b>Inspection Completed on</b> 09/10/2025
<b>Location of Inspection</b> Cornish House 1 To 88	<b>Scheduled Time of Inspection</b> 11:06 AM	<b>Inspection Submission Time</b> 12:30 PM
<b>Inspector that undertook inspection</b> Nathan Stradling	<b>Template Used</b> Estate Inspection	<b>PDF Sent to</b> nathan.stradling1@hounslow.gov.uk

## Inspection Score and Overall Grade

<b>Actual Score</b> 15	<b>Max Score</b> 16	<b>Inspection %</b> 93
<b>Banding Name</b> Default Banding	<b>Overall Inspection Result</b> Default Banding Item	

## 1 Inspection Details

<b>1.1 - Question</b> Type of Inspection	<b>1.1 - Responses</b> Quarterly	
<b>1.2 - Question</b> Area	<b>1.2 - Responses</b> East	
<b>1.3 - Question</b> How many blocks are you inspecting in the estate today?	<b>1.3 - Responses</b> 1	

## 2 Block 1

<b>2.1 - Question</b> Please state the name of the block you are inspecting	<b>2.1 - Responses</b> Cornish House	
<b>2.2 - Question</b> Please confirm you have checked everything at this block?	<b>2.2 - Responses</b> Y	
<b>2.3 - Question</b> Are there any issues to raise at this block?	<b>2.3 - Responses</b> Y	
<b>2.4 - Question</b> Are there any Ground Maintenance Issues?	<b>2.4 - Responses</b> N	<b>2.4 - Comments</b> 09/10/2025 All cut back
<b>Q 2.4 - Photo</b>		



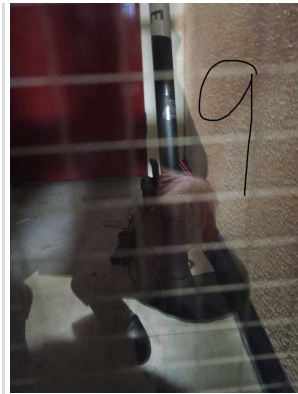
<b>2.11 - Question</b> Are there any Internal Caretaking issues?	<b>2.11 - Responses</b> N	
<b>2.26 - Question</b> Are there any External Caretaking issues?	<b>2.26 - Responses</b> N	<b>2.26 - Comments</b> 09/10/2025 All clean and tidy
<b>Q 2.26 - Photo</b> 		
<b>2.37 - Question</b> Are there any Communal Issues?	<b>2.37 - Responses</b> Y	
<b>2.38 - Question</b> Are there any Abandoned Vehicles?	<b>2.38 - Responses</b> N	
<b>2.39 - Question</b> Are there any Street Lighting Issues?	<b>2.39 - Responses</b> N	
<b>2.40 - Question</b> Are there any Pot holes?	<b>2.40 - Responses</b> N	
<b>2.41 - Question</b> Are there any issues with the Cleanliness of roads/car parks?	<b>2.41 - Responses</b> N	
<b>2.42 - Question</b> Are the notice boards are up to date?	<b>2.42 - Responses</b> Y	
<b>2.43 - Question</b> Is there any old signage to report?	<b>2.43 - Responses</b> N	
<b>2.44 - Question</b> Are there any Items stored in drying areas?	<b>2.44 - Responses</b> Y	
<b>Q 2.44 - Photo</b>	<b>Q 2.44 - Photo</b>	<b>Q 2.44 - Photo</b>



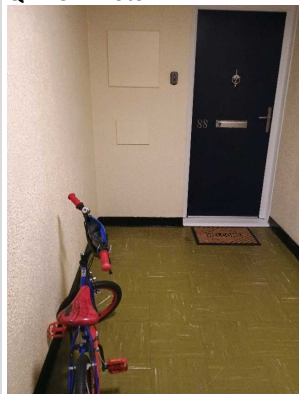
**2.45 - Question**  
Are there any Items stored in Communal areas?



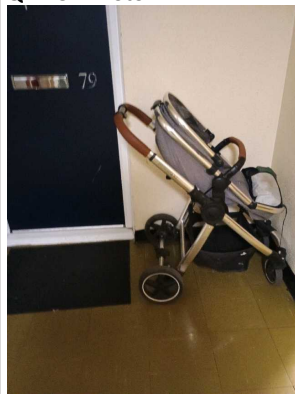
**2.45 - Responses**  
Y



**Q 2.45 - Photo**



**Q 2.45 - Photo**



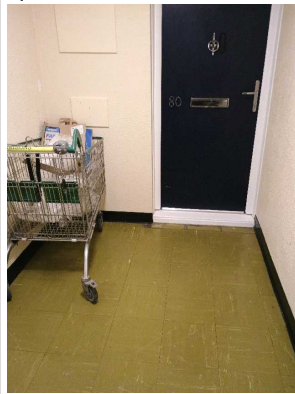
**Q 2.45 - Photo**



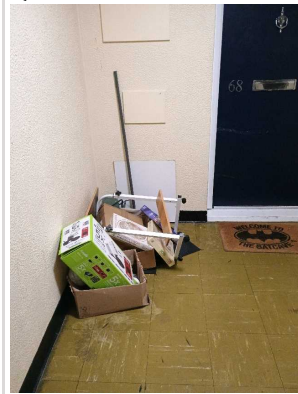
**Q 2.45 - Photo**



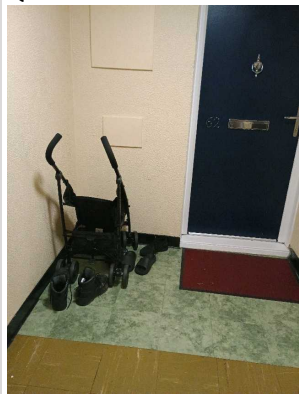
**Q 2.45 - Photo**



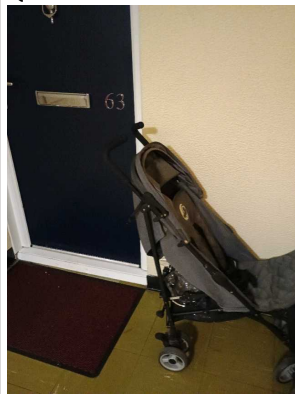
**Q 2.45 - Photo**



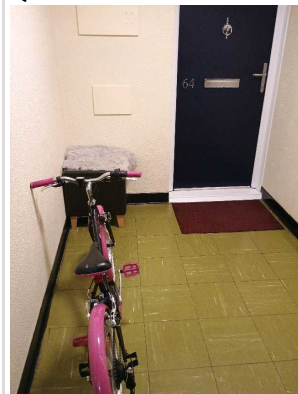
**Q 2.45 - Photo**



**Q 2.45 - Photo**




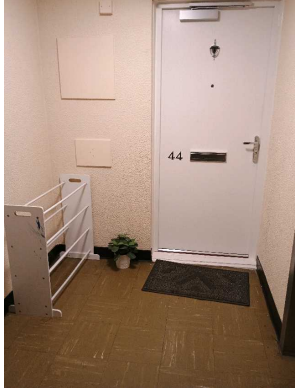
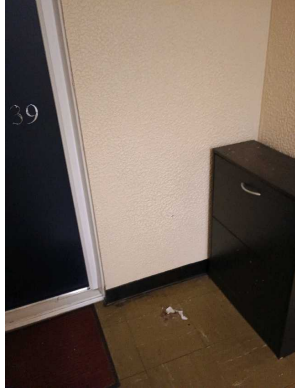




**Q 2.45 - Photo**



**Q 2.45 - Photo**

**Q 2.45 - Photo**

**Q 2.45 - Photo**

		
<p><b>Q 2.45 - Photo</b></p> 	<p><b>Q 2.45 - Photo</b></p> 	<p><b>Q 2.45 - Photo</b></p> 
<p><b>2.46 - Question</b> Is the roof access doors locked?</p>	<p><b>2.46 - Responses</b> Y</p>	
<p><b>2.47 - Question</b> Are there any Bulk rubbish items?</p>	<p><b>2.47 - Responses</b> N</p>	
<p><b>2.48 - Question</b> Are there any Untidy gardens?</p>	<p><b>2.48 - Responses</b> N</p>	
<p><b>2.49 - Question</b> Are there any Fire Risk Issues?</p>	<p><b>2.49 - Responses</b> N</p>	
<p><b>2.57 - Question</b> Are there Communal Repairs to raise?</p>	<p><b>2.57 - Responses</b> Y</p>	
<p><b>Q 2.57 - Photo</b></p> 		
<p><b>2.58 - Question</b> Are there any Communal lighting repairs?</p>	<p><b>2.58 - Responses</b> N</p>	
<p><b>2.59 - Question</b> Are there any Window repairs?</p>	<p><b>2.59 - Responses</b> N</p>	
<p><b>2.60 - Question</b> Are there any Door Handles and Closures repairs?</p>	<p><b>2.60 - Responses</b> N</p>	

<b>2.61 - Question</b> Are there any Drying Areas repairs?	<b>2.61 - Responses</b> N	
<b>2.62 - Question</b> Are there any Electrical Cupboard Doors repairs?	<b>2.62 - Responses</b> N	
<b>2.63 - Question</b> Are there any Garage Area repairs?	<b>2.63 - Responses</b> N	
<b>2.64 - Question</b> Are there any Graffiti repairs?	<b>2.64 - Responses</b> N	
<b>2.65 - Question</b> Are there any Vandalism repairs?	<b>2.65 - Responses</b> N	
<b>2.66 - Question</b> Are there any Laundry room repairs?	<b>2.66 - Responses</b> N	
<b>2.67 - Question</b> Are there any Flooring repairs?	<b>2.67 - Responses</b> N	

### 17 Overall Estate Rating

<b>17.1 - Question</b> Please rate the overall Grounds Maintenance of the estate	<b>17.1 - Responses</b> A	
<b>17.2 - Question</b> Please rate the overall Internal Caretaking of the estate	<b>17.2 - Responses</b> A	
<b>17.3 - Question</b> Please rate the overall External Caretaking of the estate	<b>17.3 - Responses</b> A	
<b>17.4 - Question</b> Please rate the overall Communal Issues of the estate	<b>17.4 - Responses</b> B	