

Inspection Report

Company Name LB of Hounslow	Scheduled Start Date 21/10/2025	Inspection Completed on 22/10/2025
Location of Inspection Burlington Lane (ESTBULA)	Scheduled Time of Inspection 10:00 AM	Inspection Submission Time 10:53 AM
Inspector that undertook inspection Harkiran Nandra	Template Used Estate Inspection	PDF Sent to harkiran.nandra@hounslow.gov.uk,Stefan.Nor@Hounslow.gov.uk

Inspection Score and Overall Grade

Actual Score	Max Score	Inspection %
13	16	81
Banding Name Default Banding	Overall Inspection Result Default Banding Item	

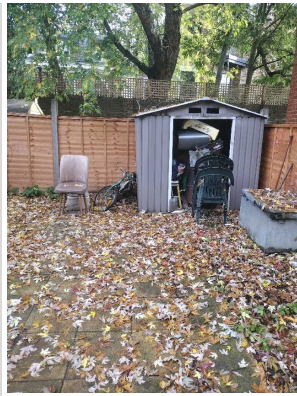
1 Inspection Details

1.1 - Question Type of Inspection	1.1 - Responses Quarterly	
1.2 - Question Area	1.2 - Responses East	
1.3 - Question How many blocks are you inspecting in the estate today?	1.3 - Responses 2	

2 Block 1

2.1 - Question Please state the name of the block you are inspecting	2.1 - Responses 19-25 Burlington lane	
2.2 - Question Please confirm you have checked everything at this block?	2.2 - Responses Y	
2.3 - Question Are there any issues to raise at this block?	2.3 - Responses Y	
2.4 - Question Are there any Ground Maintenance Issues?	2.4 - Responses Y	
2.8 - Question Are there Trees: Pruning issues?	2.8 - Responses Y	2.8 - Comments 21/10/2025 tree requires a cut back leaves in guttering and branches sitting over roof
Q 2.8 - Photo		

		
2.26 - Question Are there any External Caretaking issues?	2.26 - Responses Y	
2.28 - Question Are there any Paved Areas issues?	2.28 - Responses Y	2.28 - Comments 21/10/2025 paved area requires a sweep 2.28 - Comments 21/10/2025 communal back garden requires a sweep leaves over drains.
Q 2.28 - Photo 	Q 2.28 - Photo 	Q 2.28 - Photo 
Q 2.28 - Photo 	Q 2.28 - Photo 	
2.37 - Question Are there any Communal Issues?	2.37 - Responses Y	
2.45 - Question Are there any Items stored in Communal areas?	2.45 - Responses Y	2.45 - Comments 21/10/2025 write to tenants to clear item's.
Q 2.45 - Photo	Q 2.45 - Photo	Q 2.45 - Photo



Q 2.45 - Photo



2.57 - Question

Are there Communal Repairs to raise?

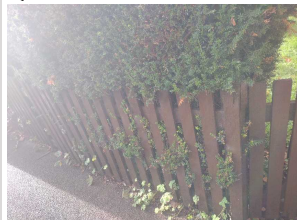
2.57 - Responses

Y

2.57 - Comments

21/10/2025 rotten fence panel missing requires a replacement

Q 2.57 - Photo



3 Block 2

3.1 - Question

Please state the name of the block you are inspecting

3.1 - Responses

27-33 Burlington Lane

3.2 - Question

Please confirm you have checked everything at this block?

3.2 - Responses

Y

3.3 - Question

Are there any issues to raise at this block?

3.3 - Responses

Y

3.4 - Question

Are there any Ground Maintenance Issues?

3.4 - Responses

Y





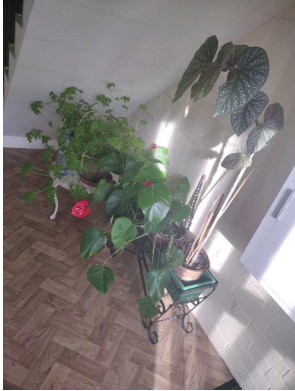


3.4 - Comments

22/10/2025 required to determine who garden is who's to direct tenants to clear there parts of the gardens, tenants explained everyone is allocated a patch awaiting for confirmation.

Q 3.4 - Photo

Q 3.4 - Photo

Q 3.4 - Photo

		
3.11 - Question Are there any Internal Caretaking issues?	3.11 - Responses Y	
3.14 - Question Are there any Entrances issues?	3.14 - Responses Y	3.14 - Comments 21/10/2025 debries visible
Q 3.14 - Photo 		
3.37 - Question Are there any Communal Issues?	3.37 - Responses Y	
3.45 - Question Are there any Items stored in Communal areas?	3.45 - Responses Y	3.45 - Comments 21/10/2025 various items in communal block are required to be removed.
Q 3.45 - Photo 	Q 3.45 - Photo 	Q 3.45 - Photo 
3.57 - Question Are there Communal Repairs to raise?	3.57 - Responses Y	3.57 - Comments 22/10/2025 loose wires on path unsafe unsure why wires are visible.
Q 3.57 - Photo		



17 Overall Estate Rating

17.1 - Question Please rate the overall Grounds Maintenance of the estate	17.1 - Responses A	
17.2 - Question Please rate the overall Internal Caretaking of the estate	17.2 - Responses B	
17.3 - Question Please rate the overall External Caretaking of the estate	17.3 - Responses B	
17.4 - Question Please rate the overall Communal Issues of the estate	17.4 - Responses B	