

Company Name LB of Hounslow	Scheduled Start Date 23/09/2025	Inspection Completed on 26/09/2025
Location of Inspection Middlesex Court 1 To 24	Scheduled Time of Inspection 10:14 AM	Inspection Submission Time 11:00 AM
Inspector that undertook inspection Harkiran Nandra	Template Used Estate Inspection	PDF Sent to harkiran.nandra@hounslow.gov.uk,barry.carter@Hounslow.gov.uk

Inspection Score and Overall Grade

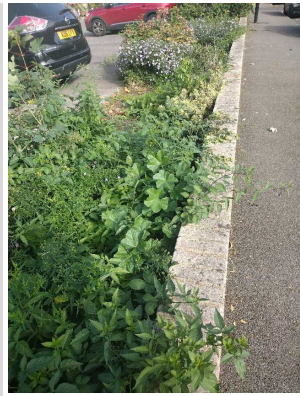
Actual Score	Max Score	Inspection %
13	16	81
Banding Name Default Banding	Overall Inspection Result Default Banding Item	

1 Inspection Details

1.1 - Question Type of Inspection	1.1 - Responses Quarterly	
1.2 - Question Area	1.2 - Responses East	
1.3 - Question How many blocks are you inspecting in the estate today?	1.3 - Responses 4	

2 Block 1

2.1 - Question Please state the name of the block you are inspecting	2.1 - Responses Middlesex Court 1-36	
2.2 - Question Please confirm you have checked everything at this block?	2.2 - Responses Y	
2.3 - Question Are there any issues to raise at this block?	2.3 - Responses Y	
2.4 - Question Are there any Ground Maintenance Issues?	2.4 - Responses Y	
2.7 - Question Are there Flower/Shrub Areas issues?	2.7 - Responses Y	2.7 - Comments 23/09/2025 tidy of front required.
Q 2.7 - Photo	Q 2.7 - Photo	Q 2.7 - Photo



2.11 - Question
Are there any Internal Caretaking issues?

2.11 - Responses
N

2.26 - Question
Are there any External Caretaking issues?

2.26 - Responses
Y

2.31 - Question
Are there any Litter Picking issues?

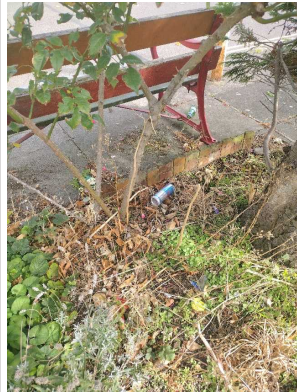
2.31 - Responses
Y

2.31 - Comments
23/09/2025 litter pick by bin area upon entrance.

Q 2.31 - Photo



Q 2.31 - Photo



2.37 - Question
Are there any Communal Issues?

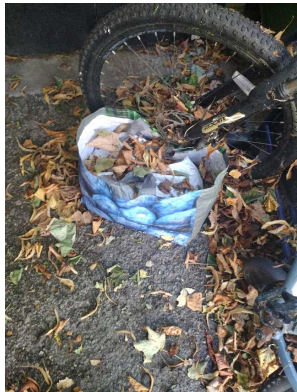
2.37 - Responses
Y

2.45 - Question
Are there any Items stored in Communal areas?

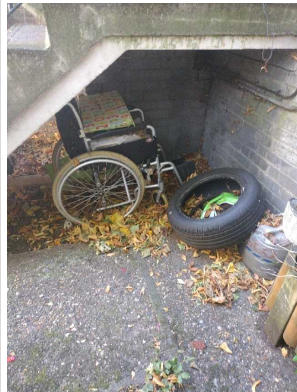
2.45 - Responses
Y

2.45 - Comments
23/09/2025 bulk items by shed 12 required to be thrown away sweeping of leaves.
2.45 - Comments
23/09/2025 bikes outside properties.

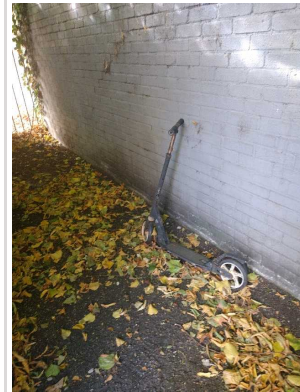
Q 2.45 - Photo



Q 2.45 - Photo



Q 2.45 - Photo



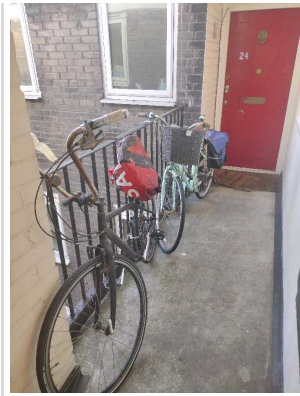
Q 2.45 - Photo

Q 2.45 - Photo

Q 2.45 - Photo



Q 2.45 - Photo



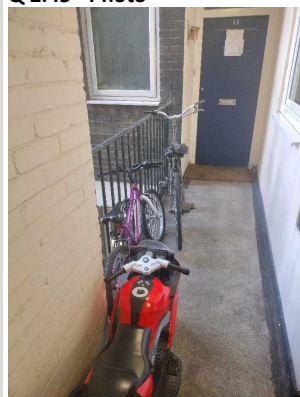
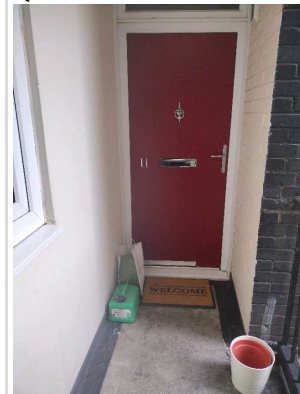
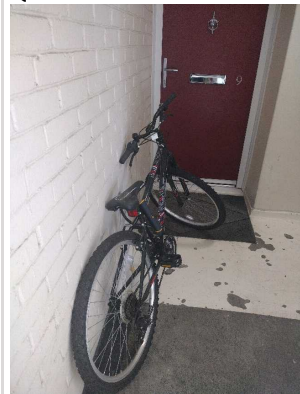
Q 2.45 - Photo



Q 2.45 - Photo



Q 2.45 - Photo



2.47 - Question
Are there any Bulk rubbish items?

2.47 - Responses
Y




2.47 - Comments
23/09/2025 bulk rubbish by bin area.

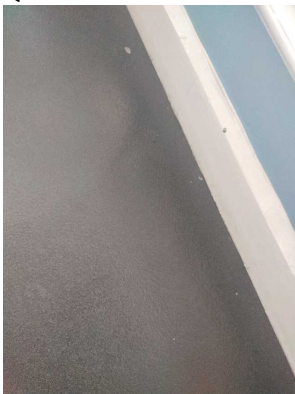




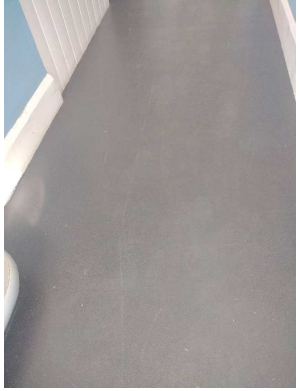
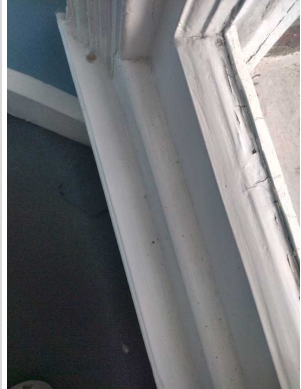
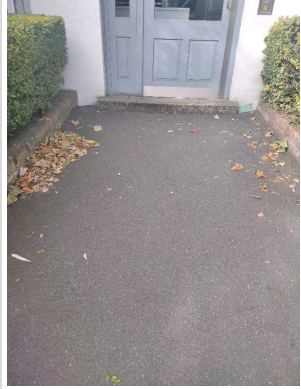
2.57 - Question
Are there Communal Repairs to raise?

2.57 - Responses
Y



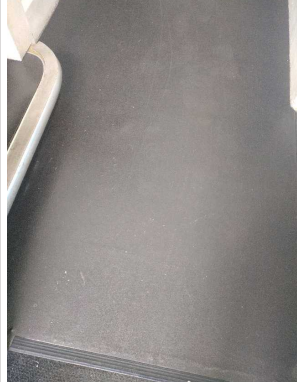
2.57 - Comments
23/09/2025 electric notice board not working. manual notice board broken




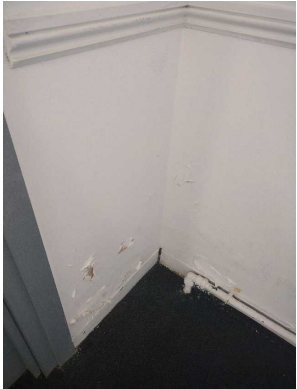
		lock. 2.57 - Comments 23/09/2025 car park bollards require a repaint.
Q 2.57 - Photo 	Q 2.57 - Photo 	Q 2.57 - Photo 

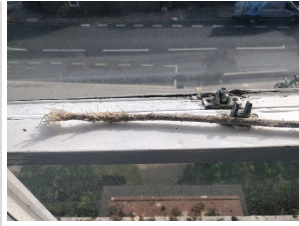
3 Block 2		
3.1 - Question Please state the name of the block you are inspecting	3.1 - Responses 1-6 Stamford Brook Mansion	
3.2 - Question Please confirm you have checked everything at this block?	3.2 - Responses Y	
3.3 - Question Are there any issues to raise at this block?	3.3 - Responses Y	
3.4 - Question Are there any Ground Maintenance Issues?	3.4 - Responses N	
3.11 - Question Are there any Internal Caretaking issues?	3.11 - Responses Y	
3.13 - Question Are there any Landings issues?	3.13 - Responses Y	3.13 - Comments 23/09/2025 debries visable
Q 3.13 - Photo 		
3.14 - Question Are there any Entrances issues?	3.14 - Responses Y	3.14 - Comments 23/09/2025 debries and cobwebs visable.
Q 3.14 - Photo	Q 3.14 - Photo	Q 3.14 - Photo

		
3.17 - Question Are there any Ledges issues?	3.17 - Responses Y	3.17 - Comments 23/09/2025 dusty and debries visable
Q 3.17 - Photo 		
3.26 - Question Are there any External Caretaking issues?	3.26 - Responses Y	
3.28 - Question Are there any Paved Areas issues?	3.28 - Responses Y	3.28 - Comments 23/09/2025 requires a sweep
Q 3.28 - Photo 		
3.57 - Question Are there Communal Repairs to raise?	3.57 - Responses Y	
3.67 - Question Are there any Flooring repairs?	3.67 - Responses Y	3.67 - Comments 23/09/2025 stairs tile coming away outside no 5 3.67 - Comments 23/09/2025 gf stair tiles coming away
Q 3.67 - Photo	Q 3.67 - Photo	



4 Block 3		
4.1 - Question Please state the name of the block you are inspecting	4.1 - Responses 7-14 Stamford Brook	
4.2 - Question Please confirm you have checked everything at this block?	4.2 - Responses Y	
4.3 - Question Are there any issues to raise at this block?	4.3 - Responses Y	
4.4 - Question Are there any Ground Maintenance Issues?	4.4 - Responses N	
4.11 - Question Are there any Internal Caretaking issues?	4.11 - Responses Y	
4.12 - Question Are there any Cleanliness: Stairs issues?	4.12 - Responses Y	4.12 - Comments 23/09/2025 debries visable
Q 4.12 - Photo 		
4.14 - Question Are there any Entrances issues?	4.14 - Responses Y	4.14 - Comments 23/09/2025 debries visable.
Q 4.14 - Photo 	Q 4.14 - Photo 	
4.17 - Question	4.17 - Responses	4.17 - Comments

Are there any Ledges issues?	Y	23/09/2025 cobwebs and debries visable
Q 4.17 - Photo 	Q 4.17 - Photo 	
4.26 - Question Are there any External Caretaking issues?	4.26 - Responses Y	
4.28 - Question Are there any Paved Areas issues?	4.28 - Responses Y	4.28 - Comments 23/09/2025 requires a sweep.
Q 4.28 - Photo 		
4.57 - Question Are there Communal Repairs to raise?	4.57 - Responses Y	4.57 - Comments 23/09/2025 paint peeling.
Q 4.57 - Photo 		
4.59 - Question Are there any Window repairs?	4.59 - Responses Y	4.59 - Comments 23/09/2025 inside pully for window broken.
Q 4.59 - Photo	Q 4.59 - Photo	



5 Block 4		
5.1 - Question Please state the name of the block you are inspecting	5.1 - Responses 15-20 Stamford Brook Mansion	
5.2 - Question Please confirm you have checked everything at this block?	5.2 - Responses Y	
5.3 - Question Are there any issues to raise at this block?	5.3 - Responses Y	
5.4 - Question Are there any Ground Maintenance Issues?	5.4 - Responses N	
5.11 - Question Are there any Internal Caretaking issues?	5.11 - Responses Y	
5.14 - Question Are there any Entrances issues?	5.14 - Responses Y	5.14 - Comments 23/09/2025 debries visable.
Q 5.14 - Photo 	Q 5.14 - Photo 	
5.26 - Question Are there any External Caretaking issues?	5.26 - Responses Y	
5.28 - Question Are there any Paved Areas issues?	5.28 - Responses Y	5.28 - Comments 23/09/2025 sweep required.
Q 5.28 - Photo		

		
5.37 - Question Are there any Communal Issues?	5.37 - Responses Y	
5.47 - Question Are there any Bulk rubbish items?	5.47 - Responses Y	5.47 - Comments 23/09/2025 bulk waste by bin area.
Q 5.47 - Photo 		
5.57 - Question Are there Communal Repairs to raise?	5.57 - Responses Y	5.57 - Comments 23/09/2025 damp walls 5.57 - Comments 23/09/2025 damp clearing outside no 20.
Q 5.57 - Photo 	Q 5.57 - Photo 	Q 5.57 - Photo 
Q 5.57 - Photo 		

17 Overall Estate Rating

17.1 - Question Please rate the overall Grounds Maintenance of the estate	17.1 - Responses A	

17.2 - Question Please rate the overall Internal Caretaking of the estate	17.2 - Responses B	
17.3 - Question Please rate the overall External Caretaking of the estate	17.3 - Responses B	
17.4 - Question Please rate the overall Communal Issues of the estate	17.4 - Responses B	