

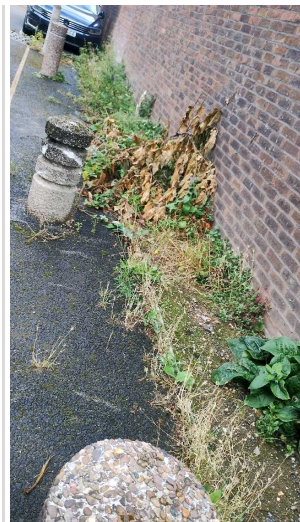
Inspection Report

| | | |
|---|---|---|
| Company Name LB of Hounslow | Scheduled Start Date 04/09/2025 | Inspection Completed on 12/09/2025 |
| Location of Inspection Layton Road 38 To 46 | Scheduled Time of Inspection 10:42 AM | Inspection Submission Time 5:42 PM |
| Inspector that undertook inspection Asha Sharma | Template Used Estate Inspection | PDF Sent to asha.sharma@hounslow.gov.uk |

| Inspection Score and Overall Grade | | |
|--|--|---------------------|
| Actual Score | Max Score | Inspection % |
| 16 | 20 | 80 |
| Banding Name Default Banding | Overall Inspection Result Default Banding Item | |

| 1 Inspection Details | | |
|--|-------------------------------------|--|
| 1.1 - Question Type of Inspection | 1.1 - Responses Quarterly | |
| 1.2 - Question Area | 1.2 - Responses East | |
| 1.3 - Question How many blocks are you inspecting in the estate today? | 1.3 - Responses 4 | |

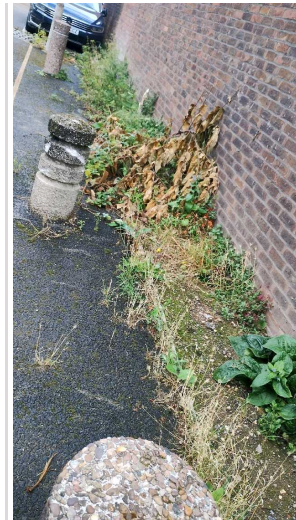
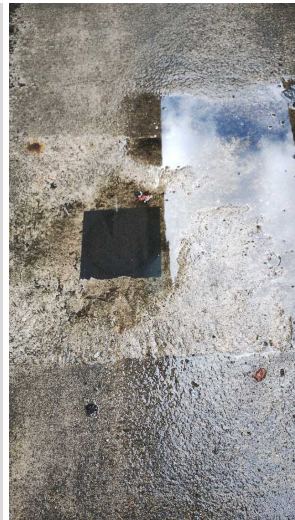
| 2 Block 1 | | |
|--|---|--|
| 2.1 - Question Please state the name of the block you are inspecting | 2.1 - Responses 75-78 Layton Road | |
| 2.2 - Question Please confirm you have checked everything at this block? | 2.2 - Responses Y | |
| 2.3 - Question Are there any issues to raise at this block? | 2.3 - Responses Y | |
| 2.4 - Question Are there any Ground Maintenance Issues? | 2.4 - Responses Y | |
| 2.5 - Question Are there Grass Cutting issues? | 2.5 - Responses N | |
| 2.6 - Question Are there Weeding issues? | 2.6 - Responses Y | 2.6 - Comments 12/09/2025 Overgrown weeds in the car park, patio areas and walkways. |
| Q 2.6 - Photo | Q 2.6 - Photo | Q 2.6 - Photo |
| | | |



Q 2.6 - Photo

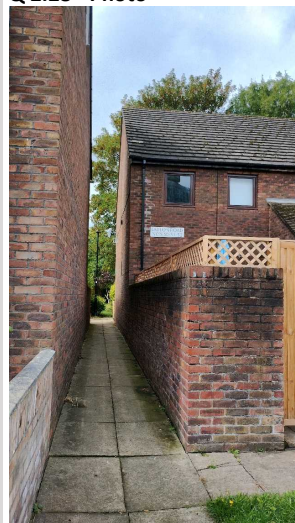
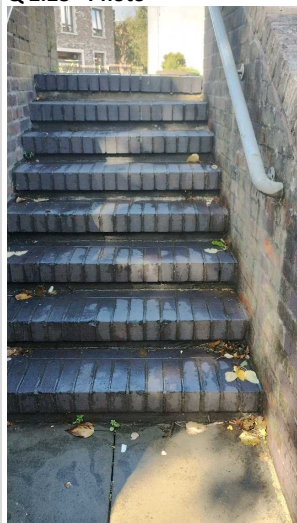


| | | |
|---|------------------------------|--|
| 2.7 - Question Are there Flower/Shrub Areas issues? | 2.7 - Responses N | |
| 2.8 - Question Are there Trees: Pruning issues? | 2.8 - Responses N | |
| 2.9 - Question Are there Safety – Foliage & Root Problems issues? | 2.9 - Responses N | |
| 2.10 - Question Are there Hedges Trimmed issues? | 2.10 - Responses N | |
| 2.11 - Question Are there any Internal Caretaking issues? | 2.11 - Responses N | |
| 2.26 - Question Are there any External Caretaking issues? | 2.26 - Responses Y | |
| 2.27 - Question Are there any Cleanliness: Grassed Areas issues? | 2.27 - Responses N | |
| 2.28 - Question Are there any Paved Areas issues? | 2.28 - Responses Y | 2.28 - Comments 12/09/2025 Rubbish/leaves in walkways and patio areas. |
| Q 2.28 - Photo | Q 2.28 - Photo | Q 2.28 - Photo |



Q 2.28 - Photo

Q 2.28 - Photo



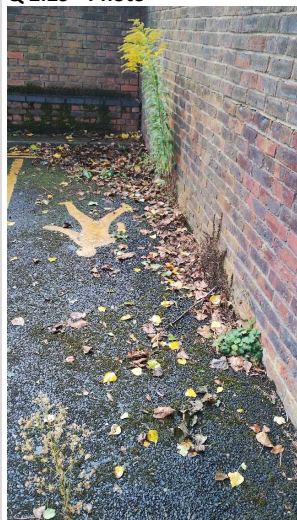
2.29 - Question
Are there any Car Parks issues?

2.29 - Responses
Y

2.29 - Comments
12/09/2025 Overgrown weeds and rubbish in the car park.


Q 2.29 - Photo

Q 2.29 - Photo








2.30 - Question
Are there any Play Areas (Cleanliness, condition of play equipment, surfaces and fencing) issues?

2.30 - Responses
N

| | | |
|---|------------------------------|---|
| 2.31 - Question Are there any Litter Picking issues? | 2.31 - Responses N | |
| 2.32 - Question Are there any Bin Rooms issues? | 2.32 - Responses N | |
| 2.33 - Question Are there any Bulk Refuse and Graffiti issues? | 2.33 - Responses N | |
| 2.34 - Question Are there any Signs issues? | 2.34 - Responses N | |
| 2.35 - Question Are there any Numberings issues? | 2.35 - Responses N | |
| 2.36 - Question Are there any Notice Boards issues? | 2.36 - Responses N | |
| 2.37 - Question Are there any Communal Issues? | 2.37 - Responses N | |
| 2.49 - Question Are there any Fire Risk Issues? | 2.49 - Responses N | |
| 2.57 - Question Are there Communal Repairs to raise? | 2.57 - Responses Y | 2.57 - Comments 12/09/2025 Unblock drain in walkway outside the block by flat 73. |
| Q 2.57 - Photo  | | |
| 2.58 - Question Are there any Communal lighting repairs? | 2.58 - Responses N | |
| 2.59 - Question Are there any Window repairs? | 2.59 - Responses N | |
| 2.60 - Question Are there any Door Handles and Closures repairs? | 2.60 - Responses N | |
| 2.61 - Question Are there any Drying Areas repairs? | 2.61 - Responses N | |
| 2.62 - Question Are there any Electrical Cupboard Doors repairs? | 2.62 - Responses N | |
| 2.63 - Question Are there any Garage Area repairs? | 2.63 - Responses N | |
| 2.64 - Question Are there any Graffiti repairs? | 2.64 - Responses N | |
| 2.65 - Question Are there any Vandalism repairs? | 2.65 - Responses N | |
| 2.66 - Question | 2.66 - Responses | |

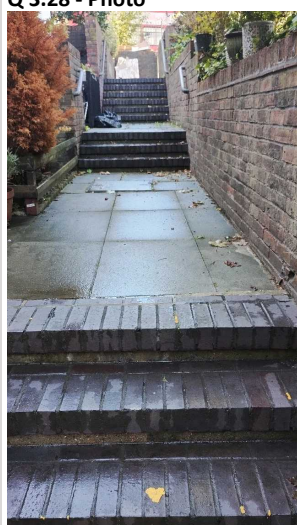
| | | |
|---|------------------------------|--|
| Are there any Laundry room repairs? | N | |
| 2.67 - Question Are there any Flooring repairs? | 2.67 - Responses N | |

| 3 Block 2 | | |
|--|--|--|
| 3.1 - Question Please state the name of the block you are inspecting | 3.1 - Responses 57 Layton Road | |
| 3.2 - Question Please confirm you have checked everything at this block? | 3.2 - Responses Y | |
| 3.3 - Question Are there any issues to raise at this block? | 3.3 - Responses Y | |
| 3.4 - Question Are there any Ground Maintenance Issues? | 3.4 - Responses Y | 3.4 - Comments 12/09/2025 Overgrown Weeds in the patio areas at the entrance to 1-4 Layton Rd. |
| Q 3.4 - Photo  | Q 3.4 - Photo  | |
| 3.5 - Question Are there Grass Cutting issues? | 3.5 - Responses N | |
| 3.6 - Question Are there Weeding issues? | 3.6 - Responses Y | |
| 3.7 - Question Are there Flower/Shrub Areas issues? | 3.7 - Responses N | |
| 3.9 - Question Are there Safety – Foliage & Root Problems issues? | 3.9 - Responses N | |
| 3.10 - Question Are there Hedges Trimmed issues? | 3.10 - Responses N | |
| 3.11 - Question Are there any Internal Caretaking issues? | 3.11 - Responses Y | 3.11 - Comments 12/09/2025 Block was not clean at the time of inspection. |
| Q 3.11 - Photo  | Q 3.11 - Photo  | Q 3.11 - Photo  |


| | | |
|---|--|--|
| 3.12 - Question Are there any Cleanliness: Stairs issues? | 3.12 - Responses Y | |
| 3.13 - Question Are there any Landings issues? | 3.13 - Responses N | |
| 3.14 - Question Are there any Entrances issues? | 3.14 - Responses N | |
| 3.15 - Question Are there any Lifts issues? | 3.15 - Responses N | |
| 3.16 - Question Are there any Door and Window Glazing issues? | 3.16 - Responses N | |
| 3.17 - Question Are there any Ledges issues? | 3.17 - Responses N | |
| 3.18 - Question Are there any Walls issues? | 3.18 - Responses N | |
| 3.19 - Question Are there any Lighting issues? | 3.19 - Responses N | |
| 3.20 - Question Are there any Handrails secure issues? | 3.20 - Responses N | |
| 3.21 - Question Are there any Chute Rooms issues? | 3.21 - Responses N | |
| 3.22 - Question Are there any Signage issues? | 3.22 - Responses N | |
| 3.23 - Question Are there any Graffiti issues? | 3.23 - Responses N | |
| 3.24 - Question Are there any issues with cleaning completion sheets? | 3.24 - Responses N | |
| 3.25 - Question Are there any issues with Notice Boards? | 3.25 - Responses N | |
| 3.26 - Question Are there any External Caretaking issues? | 3.26 - Responses Y | 3.26 - Comments 12/09/2025 Entrance to the block was not clean at the of inspection. |
| 3.27 - Question Are there any Cleanliness: Grassed Areas issues? | 3.27 - Responses N | |
| 3.28 - Question Are there any Paved Areas issues? | 3.28 - Responses Y | 3.28 - Comments 12/09/2025 rubbish /leaves on the paved areas at the time inspection. |
| Q 3.28 - Photo | Q 3.28 - Photo  | Q 3.28 - Photo  |



Q 3.28 - Photo



| | | |
|---|------------------------------|--|
| 3.29 - Question Are there any Car Parks issues? | 3.29 - Responses N | |
| 3.30 - Question Are there any Play Areas (Cleanliness, condition of play equipment, surfaces and fencing) issues? | 3.30 - Responses N | |
| 3.31 - Question Are there any Litter Picking issues? | 3.31 - Responses N | |
| 3.32 - Question Are there any Bin Rooms issues? | 3.32 - Responses N | |
| 3.33 - Question Are there any Bulk Refuse and Graffiti issues? | 3.33 - Responses N | |
| 3.34 - Question Are there any Signs issues? | 3.34 - Responses N | |
| 3.35 - Question Are there any Numberings issues? | 3.35 - Responses N | |
| 3.36 - Question Are there any Notice Boards issues? | 3.36 - Responses N | |
| 3.37 - Question Are there any Communal Issues? | 3.37 - Responses Y | |
| 3.38 - Question Are there any Abandoned Vehicles? | 3.38 - Responses N | |
| | | |


| | | |
|--|--|---|
| 3.39 - Question Are there any Street Lighting Issues? | 3.39 - Responses N | |
| 3.40 - Question Are there any Pot holes? | 3.40 - Responses N | |
| 3.41 - Question Are there any issues with the Cleanliness of roads/car parks? | 3.41 - Responses Y | 3.41 - Comments 12/09/2025 Overgrown weeds and rubbish in the park at the time of inspection. |
| Q 3.41 - Photo  | Q 3.41 - Photo  | |
| 3.42 - Question Are the notice boards up to date? | 3.42 - Responses Y | |
| 3.43 - Question Is there any old signage to report? | 3.43 - Responses N | |
| 3.44 - Question Are there any Items stored in drying areas? | 3.44 - Responses N | |
| 3.45 - Question Are there any Items stored in Communal areas? | 3.45 - Responses N | |
| 3.46 - Question Is the roof access doors locked? | 3.46 - Responses Y | |
| 3.47 - Question Are there any Bulk rubbish items? | 3.47 - Responses N | |
| 3.48 - Question Are there any Untidy gardens? | 3.48 - Responses N | |
| 3.49 - Question Are there any Fire Risk Issues? | 3.49 - Responses N | |
| 3.57 - Question Are there Communal Repairs to raise? | 3.57 - Responses Y | 3.57 - Comments 12/09/2025 replace the broken vent on the wall rear of flat 59 Layton Rd, facing the car park |
| Q 3.57 - Photo | | |



| | | |
|--|------------------------------|--|
| 3.58 - Question Are there any Communal lighting repairs? | 3.58 - Responses N | |
| 3.59 - Question Are there any Window repairs? | 3.59 - Responses N | |
| 3.60 - Question Are there any Door Handles and Closures repairs? | 3.60 - Responses N | |
| 3.61 - Question Are there any Drying Areas repairs? | 3.61 - Responses N | |
| 3.62 - Question Are there any Electrical Cupboard Doors repairs? | 3.62 - Responses N | |
| 3.63 - Question Are there any Garage Area repairs? | 3.63 - Responses N | |
| 3.64 - Question Are there any Graffiti repairs? | 3.64 - Responses N | |
| 3.65 - Question Are there any Vandalism repairs? | 3.65 - Responses N | |
| 3.66 - Question Are there any Laundry room repairs? | 3.66 - Responses N | |
| 3.67 - Question Are there any Flooring repairs? | 3.67 - Responses N | |


4 Block 3

| | | |
|--|---|--|
| 4.1 - Question Please state the name of the block you are inspecting | 4.1 - Responses 26-31 Brooklane North | |
| 4.2 - Question Please confirm you have checked everything at this block? | 4.2 - Responses Y | |
| 4.3 - Question Are there any issues to raise at this block? | 4.3 - Responses Y | |
| 4.4 - Question Are there any Ground Maintenance Issues? | 4.4 - Responses N | |
| 4.11 - Question Are there any Internal Caretaking issues? | 4.11 - Responses N | |

| | | |
|---|------------------------------|--|
| 4.26 - Question Are there any External Caretaking issues? | 4.26 - Responses N | |
| 4.37 - Question Are there any Communal Issues? | 4.37 - Responses N | |
| 4.49 - Question Are there any Fire Risk Issues? | 4.49 - Responses N | |
| 4.57 - Question Are there Communal Repairs to raise? | 4.57 - Responses Y | 4.57 - Comments 12/09/2025 Adjust the front door to the block . as it rubbing against the floor not locking automatically. |
| Q 4.57 - Photo  | | |
| 4.58 - Question Are there any Communal lighting repairs? | 4.58 - Responses N | |
| 4.59 - Question Are there any Window repairs? | 4.59 - Responses N | |
| 4.60 - Question Are there any Door Handles and Closures repairs? | 4.60 - Responses N | |
| 4.61 - Question Are there any Drying Areas repairs? | 4.61 - Responses N | |
| 4.62 - Question Are there any Electrical Cupboard Doors repairs? | 4.62 - Responses N | |
| 4.63 - Question Are there any Garage Area repairs? | 4.63 - Responses N | |
| 4.64 - Question Are there any Graffiti repairs? | 4.64 - Responses N | |
| 4.65 - Question Are there any Vandalism repairs? | 4.65 - Responses N | |
| 4.66 - Question Are there any Laundry room repairs? | 4.66 - Responses N | |
| 4.67 - Question Are there any Flooring repairs? | 4.67 - Responses N | |

5 Block 4

| | | |
|--|---|--|
| 5.1 - Question Please state the name of the block you are inspecting | 5.1 - Responses 79-81 Layton Road | |
|--|---|--|

| | | |
|---|------------------------------|---|
| 5.2 - Question Please confirm you have checked everything at this block? | 5.2 - Responses Y | |
| 5.3 - Question Are there any issues to raise at this block? | 5.3 - Responses Y | |
| 5.4 - Question Are there any Ground Maintenance Issues? | 5.4 - Responses Y | 5.4 - Comments 12/09/2025 Overgrown weeds in the Garden and on path opposit flats 79-81 |
| 5.6 - Question Are there Weeding issues? | 5.6 - Responses Y | |
| 5.7 - Question Are there Flower/Shrub Areas issues? | 5.7 - Responses Y | |
| 5.9 - Question Are there Safety – Foliage & Root Problems issues? | 5.9 - Responses N | |
| 5.10 - Question Are there Hedges Trimmed issues? | 5.10 - Responses N | |
| 5.11 - Question Are there any Internal Caretaking issues? | 5.11 - Responses N | |
| 5.26 - Question Are there any External Caretaking issues? | 5.26 - Responses Y | |
| 5.28 - Question Are there any Paved Areas issues? | 5.28 - Responses Y | |
| 5.29 - Question Are there any Car Parks issues? | 5.29 - Responses Y | |
| 5.30 - Question Are there any Play Areas (Cleanliness, condition of play equipment, surfaces and fencing) issues? | 5.30 - Responses N | |
| 5.31 - Question Are there any Litter Picking issues? | 5.31 - Responses N | |
| 5.32 - Question Are there any Bin Rooms issues? | 5.32 - Responses N | |
| 5.33 - Question Are there any Bulk Refuse and Graffiti issues? | 5.33 - Responses Y | 5.33 - Comments 12/09/2025 Dumped bulk items by centre shrub bed. |
| Q 5.33 - Photo  | | |
| 5.34 - Question Are there any Signs issues? | 5.34 - Responses N | |
| 5.35 - Question Are there any Numberings issues? | 5.35 - Responses N | |
| 5.36 - Question Are there any Notice Boards issues? | 5.36 - Responses N | |
| 5.37 - Question Are there any Communal Issues? | 5.37 - Responses Y | |
| 5.38 - Question Are there any Abandoned Vehicles? | 5.38 - Responses Y | 5.38 - Comments 12/09/2025 Damaged vehicle parked by the side wall of flat 81. |
| | | |

Q 5.38 - Photo



Q 5.38 - Photo



| | | |
|--|------------------------------|--|
| 5.49 - Question Are there any Fire Risk Issues? | 5.49 - Responses N | |
| 5.57 - Question Are there Communal Repairs to raise? | 5.57 - Responses N | |

| 17 Overall Estate Rating | | |
|---|------------------------------|--|
| 17.1 - Question Please rate the overall Grounds Maintenance of the estate | 17.1 - Responses B | |
| 17.2 - Question Please rate the overall Internal Caretaking of the estate | 17.2 - Responses B | |
| 17.3 - Question Please rate the overall External Caretaking of the estate | 17.3 - Responses B | |
| 17.4 - Question Please rate the overall Communal Issues of the estate | 17.4 - Responses B | |
| 17.5 - Question Please rate the overall Fire Risks of the estate | 17.5 - Responses A | |