

Inspection Report

Company Name LB of Hounslow	Scheduled Start Date 25/09/2025	Inspection Completed on 25/09/2025
Location of Inspection Sandy Drive 1 To 12	Scheduled Time of Inspection 3:46 PM	Inspection Submission Time 4:10 PM
Inspector that undertook inspection Keith Asuncion	Template Used Estate Inspection	PDF Sent to keith.asuncion@hounslow.gov.uk

Inspection Score and Overall Grade		
Actual Score	Max Score	Inspection %
15	20	75
Banding Name Default Banding	Overall Inspection Result Default Banding Item	

1 Inspection Details		
1.1 - Question Type of Inspection	1.1 - Responses Quarterly	
1.2 - Question Area	1.2 - Responses West	
1.3 - Question How many blocks are you inspecting in the estate today?	1.3 - Responses 6	

2 Block 1		
2.1 - Question Please state the name of the block you are inspecting	2.1 - Responses 31-33 & 40-45 Sandy Drive	
2.2 - Question Please confirm you have checked everything at this block?	2.2 - Responses Y	
2.3 - Question Are there any issues to raise at this block?	2.3 - Responses Y	
2.4 - Question Are there any Ground Maintenance Issues?	2.4 - Responses N	
2.11 - Question Are there any Internal Caretaking issues?	2.11 - Responses N	
2.26 - Question Are there any External Caretaking issues?	2.26 - Responses N	
2.37 - Question Are there any Communal Issues?	2.37 - Responses N	
2.49 - Question Are there any Fire Risk Issues?	2.49 - Responses N	

2.57 - Question Are there Communal Repairs to raise?	2.57 - Responses Y	
2.58 - Question Are there any Communal lighting repairs?	2.58 - Responses N	
2.59 - Question Are there any Window repairs?	2.59 - Responses Y	2.59 - Comments 25/09/2025 Ground floor communal window is cracked.
Q 2.59 - Photo 		
2.60 - Question Are there any Door Handles and Closures repairs?	2.60 - Responses N	
2.61 - Question Are there any Drying Areas repairs?	2.61 - Responses N	
2.62 - Question Are there any Electrical Cupboard Doors repairs?	2.62 - Responses N	
2.63 - Question Are there any Garage Area repairs?	2.63 - Responses N	
2.64 - Question Are there any Graffiti repairs?	2.64 - Responses N	
2.65 - Question Are there any Vandalism repairs?	2.65 - Responses N	
2.66 - Question Are there any Laundry room repairs?	2.66 - Responses N	
2.67 - Question Are there any Flooring repairs?	2.67 - Responses N	

3 Block 2		
3.1 - Question Please state the name of the block you are inspecting	3.1 - Responses 32 & 52-57 Sandy Drive	
3.2 - Question Please confirm you have checked everything at this block?	3.2 - Responses Y	
3.3 - Question Are there any issues to raise at this block?	3.3 - Responses Y	
3.4 - Question Are there any Ground Maintenance Issues?	3.4 - Responses Y	
3.5 - Question Are there Grass Cutting issues?	3.5 - Responses N	
3.6 - Question	3.6 - Responses	

Are there Weeding issues?	N	
3.7 - Question Are there Flower/Shrub Areas issues?	3.7 - Responses Y	3.7 - Comments 25/09/2025 Communal garden needs cutting back.
Q 3.7 - Photo 	Q 3.7 - Photo 	
3.9 - Question Are there Safety – Foliage & Root Problems issues?	3.9 - Responses N	
3.10 - Question Are there Hedges Trimmed issues?	3.10 - Responses N	
3.11 - Question Are there any Internal Caretaking issues?	3.11 - Responses N	
3.26 - Question Are there any External Caretaking issues?	3.26 - Responses N	
3.37 - Question Are there any Communal Issues?	3.37 - Responses N	
3.49 - Question Are there any Fire Risk Issues?	3.49 - Responses N	
3.57 - Question Are there Communal Repairs to raise?	3.57 - Responses Y	
3.58 - Question Are there any Communal lighting repairs?	3.58 - Responses N	
3.59 - Question Are there any Window repairs?	3.59 - Responses Y	3.59 - Comments 25/09/2025 Flat 55 window smashed, needs replacement.
Q 3.59 - Photo 	Q 3.59 - Photo 	
3.60 - Question Are there any Door Handles and Closures repairs?	3.60 - Responses N	
3.61 - Question	3.61 - Responses	

Are there any Drying Areas repairs?	N	
3.62 - Question Are there any Electrical Cupboard Doors repairs?	3.62 - Responses N	
3.63 - Question Are there any Garage Area repairs?	3.63 - Responses N	
3.64 - Question Are there any Graffiti repairs?	3.64 - Responses N	
3.65 - Question Are there any Vandalism repairs?	3.65 - Responses N	
3.66 - Question Are there any Laundry room repairs?	3.66 - Responses N	
3.67 - Question Are there any Flooring repairs?	3.67 - Responses N	

4 Block 3		
4.1 - Question Please state the name of the block you are inspecting	4.1 - Responses 64a-64f Sandy Drive	
4.2 - Question Please confirm you have checked everything at this block?	4.2 - Responses Y	
4.3 - Question Are there any issues to raise at this block?	4.3 - Responses Y	
4.4 - Question Are there any Ground Maintenance Issues?	4.4 - Responses N	
4.11 - Question Are there any Internal Caretaking issues?	4.11 - Responses N	
4.26 - Question Are there any External Caretaking issues?	4.26 - Responses N	
4.37 - Question Are there any Communal Issues?	4.37 - Responses N	
4.49 - Question Are there any Fire Risk Issues?	4.49 - Responses N	
4.57 - Question Are there Communal Repairs to raise?	4.57 - Responses Y	
4.58 - Question Are there any Communal lighting repairs?	4.58 - Responses N	
4.59 - Question Are there any Window repairs?	4.59 - Responses N	
4.60 - Question Are there any Door Handles and Closures repairs?	4.60 - Responses N	
4.61 - Question Are there any Drying Areas repairs?	4.61 - Responses N	
4.62 - Question Are there any Electrical Cupboard Doors repairs?	4.62 - Responses N	
4.63 - Question Are there any Garage Area repairs?	4.63 - Responses N	
4.64 - Question	4.64 - Responses	4.64 - Comments

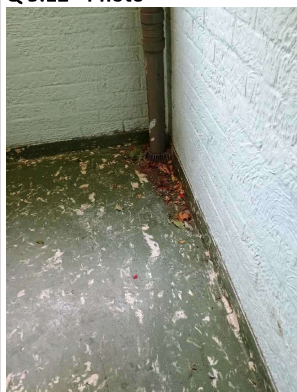
Are there any Graffiti repairs?	Y	25/09/2025 Remove graffiti from side of block.
Q 4.64 - Photo 	Q 4.64 - Photo 	
4.65 - Question Are there any Vandalism repairs?	4.65 - Responses Y	4.65 - Comments 25/09/2025 Secure grounding cable on side of the block. 4.65 - Comments 25/09/2025 Replace feather board on both gates with thicker feather board.
Q 4.65 - Photo 	Q 4.65 - Photo 	Q 4.65 - Photo 
4.66 - Question Are there any Laundry room repairs?	4.66 - Responses N	
4.67 - Question Are there any Flooring repairs?	4.67 - Responses N	

5 Block 4

5.1 - Question Please state the name of the block you are inspecting	5.1 - Responses 14 & 21-25 Sandy Drive	
5.2 - Question Please confirm you have checked everything at this block?	5.2 - Responses Y	
5.3 - Question Are there any issues to raise at this block?	5.3 - Responses Y	
5.4 - Question Are there any Ground Maintenance Issues?	5.4 - Responses N	
5.11 - Question Are there any Internal Caretaking issues?	5.11 - Responses Y	
5.12 - Question	5.12 - Responses	5.12 - Comments

Are there any Cleanliness: Stairs issues?	Y	25/09/2025 Stairs and landings need sweeping.
---	---	---

Q 5.12 - Photo



5.13 - Question Are there any Landings issues?	5.13 - Responses Y	
5.14 - Question Are there any Entrances issues?	5.14 - Responses N	
5.15 - Question Are there any Lifts issues?	5.15 - Responses N	
5.16 - Question Are there any Door and Window Glazing issues?	5.16 - Responses N	
5.17 - Question Are there any Ledges issues?	5.17 - Responses N	
5.18 - Question Are there any Walls issues?	5.18 - Responses N	
5.19 - Question Are there any Lighting issues?	5.19 - Responses N	
5.20 - Question Are there any Handrails secure issues?	5.20 - Responses N	
5.21 - Question Are there any Chute Rooms issues?	5.21 - Responses N	
5.22 - Question Are there any Signage issues?	5.22 - Responses N	
5.23 - Question Are there any Graffiti issues?	5.23 - Responses N	
5.24 - Question Are there any issues with cleaning completion sheets?	5.24 - Responses N	
5.25 - Question Are there any issues with Notice Boards?	5.25 - Responses N	
5.26 - Question Are there any External Caretaking issues?	5.26 - Responses N	
5.37 - Question Are there any Communal Issues?	5.37 - Responses N	
5.49 - Question Are there any Fire Risk Issues?	5.49 - Responses N	
5.57 - Question Are there Communal Repairs to raise?	5.57 - Responses N	

6.1 - Question Please state the name of the block you are inspecting	6.1 - Responses 7-30 Sandy Drive	
6.2 - Question Please confirm you have checked everything at this block?	6.2 - Responses Y	
6.3 - Question Are there any issues to raise at this block?	6.3 - Responses N	

7 Block 6

7.1 - Question Please state the name of the block you are inspecting	7.1 - Responses 10-12 Sandy Drive	
7.2 - Question Please confirm you have checked everything at this block?	7.2 - Responses Y	
7.3 - Question Are there any issues to raise at this block?	7.3 - Responses N	

17 Overall Estate Rating

17.1 - Question Please rate the overall Grounds Maintenance of the estate	17.1 - Responses B	
17.2 - Question Please rate the overall Internal Caretaking of the estate	17.2 - Responses B	
17.3 - Question Please rate the overall External Caretaking of the estate	17.3 - Responses B	
17.4 - Question Please rate the overall Communal Issues of the estate	17.4 - Responses B	
17.5 - Question Please rate the overall Fire Risks of the estate	17.5 - Responses B	