

DUKES MEADOWS MASTERPLAN

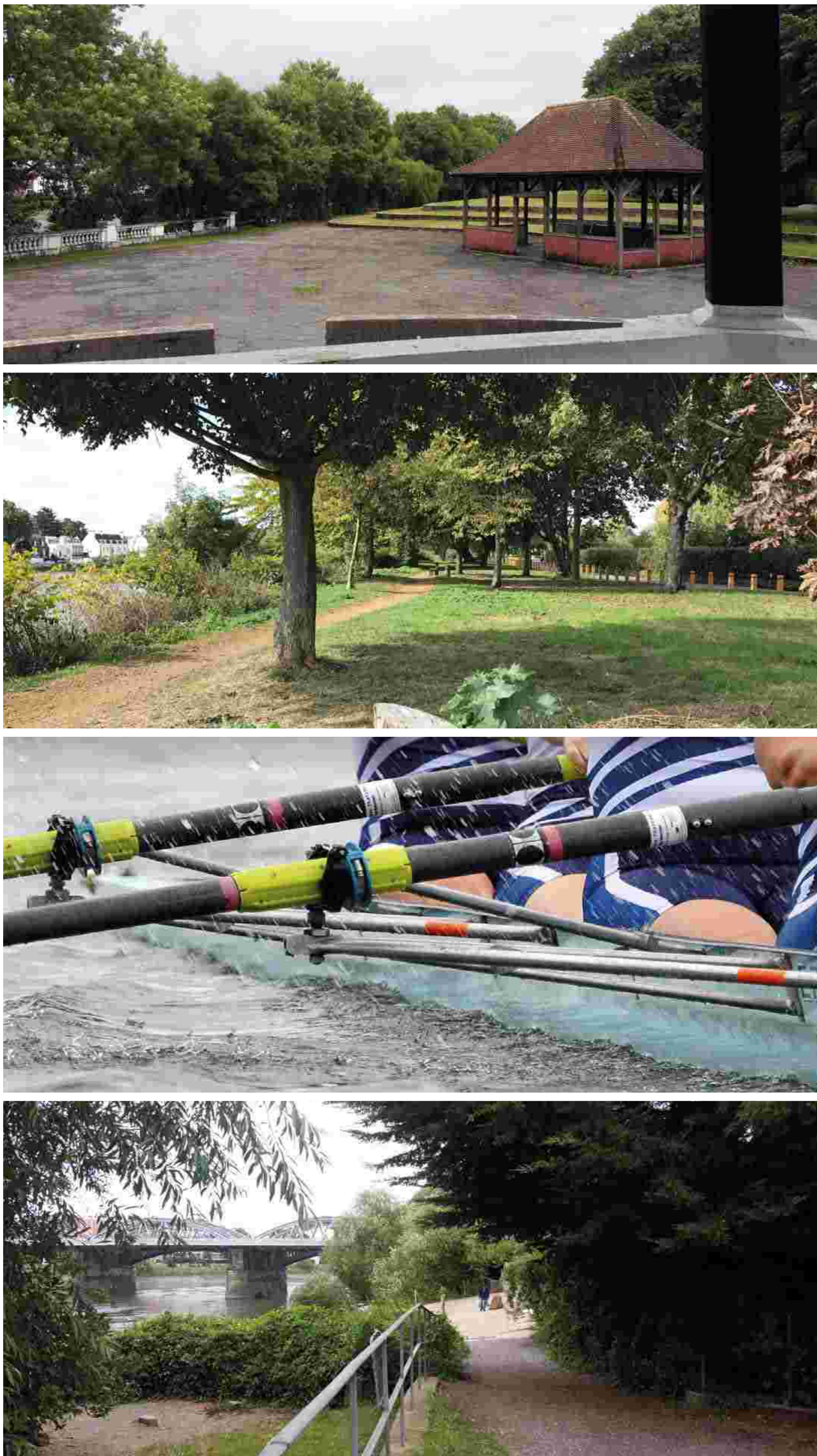
Welcome to our exhibition to update the community of Hounslow about our proposals to regenerate Dukes Meadows delivering new and improved public realm and sporting facilities.

.....

The London Borough of Hounslow has appointed a team of architects and sports and leisure specialists to help develop options for the improvements and new facilities.

Following the Council's previous public exhibition, we wanted to update you on how the proposals have evolved in response to your feedback and to inform you of the proposals we are aiming to submit as part of a planning application in the coming months.

The Council have been engaging with the leading stakeholders on the site during the last year to agree a mix of facilities and wider proposals for Dukes Meadows across public realm, sport, transport and access.

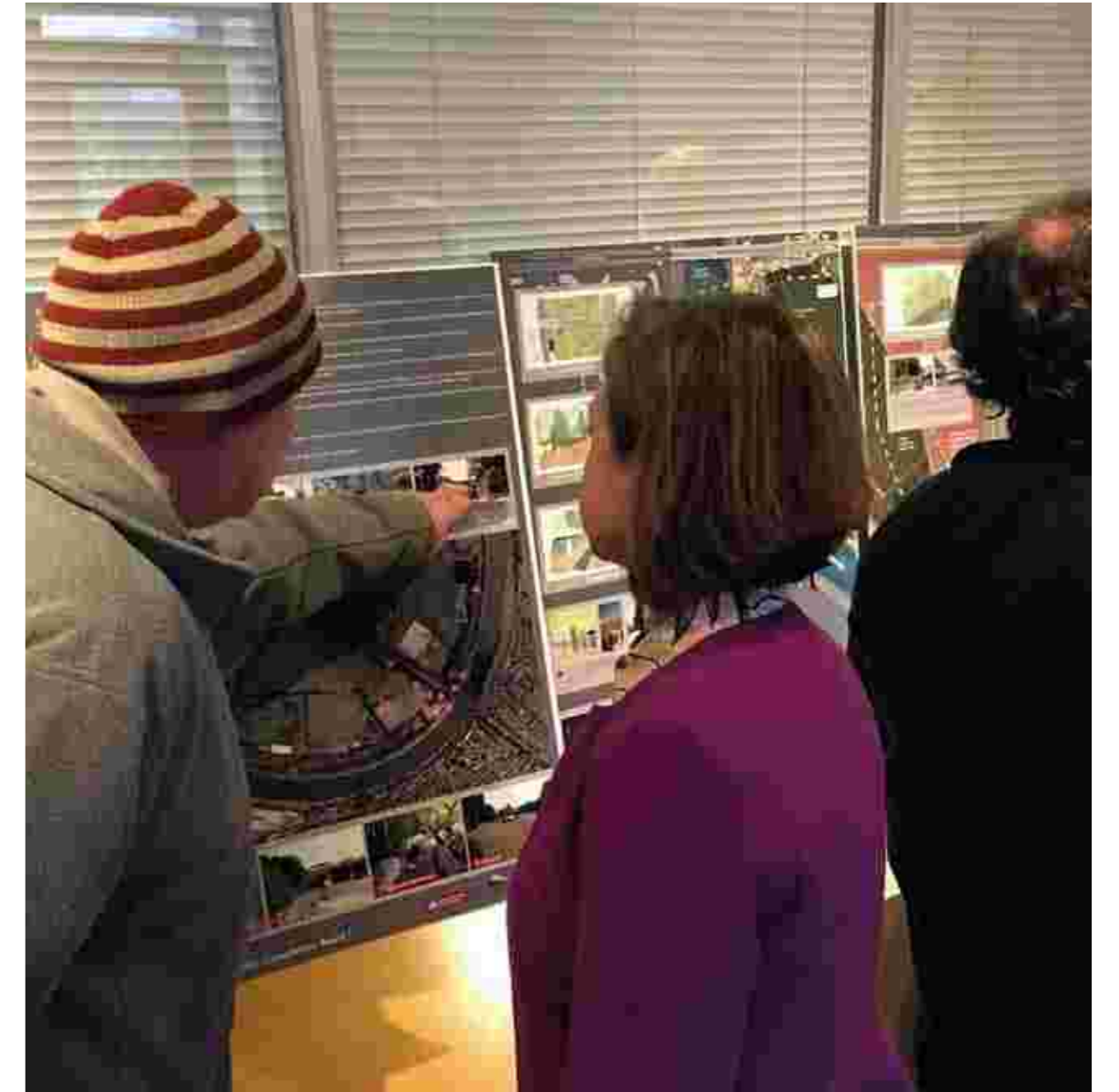


Please take the time to fill in a feedback form and leave it with us today, or complete online at www.hounslow.gov.uk/consultations

WHAT YOU TOLD US

In November 2016 the Council carried out two public consultation events to discuss our emerging proposals for improving the facilities and visitor experience at Dukes Meadows.

We also launched an online public consultation to enable more people to view and comment on the proposals. Almost 300 people and stakeholders provided feedback.



FEEDBACK FROM THE PUBLIC CONSULTATION

Support for a riverside footbridge underneath Barnes Bridge	Increased secure car parking options	Tidy/thin trees/ foliage/shrubbery	Improve bandstand and Promenade area
Improve access particularly for pedestrians	Improve signage and review lighting	Keep open and green spaces	Permanent toilets facilities
Improve pavement surfaces	No permanent barbecues	Improve cycle provisions	Restricted vehicle access introduced
Improve rubbish bin provision and collection	Redevelopment of Chiswick Boathouse	Investment in the sport facilities to improve local offer	Better infrastructure to be mindful of traffic issues on site, including parking and roads

“ Better parking, access and infrastructure would be welcome. ”

“ I love Dukes Meadows and I look forward to any improvements. ”

“ Reinstating the toilet blocks very much needed. ”

“ Tree thinning on the promenade long overdue. ”

UPDATED PROPOSALS



After the consultation, the council has revised and refined the proposals to include a number of landscape improvements as well as a new site plan for sport and recreation facilities, and traffic management.

The aim is to deliver new facilities and features for the benefit of the one million visitors who enjoy Dukes Meadows every year, as well as attracting new users to the 75.5 ha site.

Based on the results gathered from the consultations a public realm masterplan for Dukes Meadows has been drawn up.

THE MAIN AREAS OF PROPOSED PUBLIC REALM IMPROVEMENTS INCLUDE:

Chiswick Bridge and Riverside Drive entrances

.....

The entirety of the Thames Path through the site

.....

Dan Mason Drive improvements

.....

Bandstand area and promenade

.....

Pedestrian experience around the site

THE SPORTING FACILITY IMPROVEMENTS AT DUKES MEADOWS INCLUDE:

New rugby Artificial Grass Pitch and extension to the rugby pavilion for both rugby and hockey

.....

Refurbished hockey pitch

.....

Redeveloped Chiswick Boathouse

.....

New football pavilion and two 3G Artificial Grass Pitches for football

.....

Grass pitch improvements and upgrading for football and rugby

DUKES MEADOWS

PUBLIC REALM

The public realm proposals shown on these boards are not only the product of feedback from the November 2016 public consultations, but also discussions with a number of external stakeholders.

The London Wildlife Trust in particular have been an important partner throughout the design development process, and will be collaborating with the design team on a planting and management strategy to ensure all proposals are ecologically sensitive.

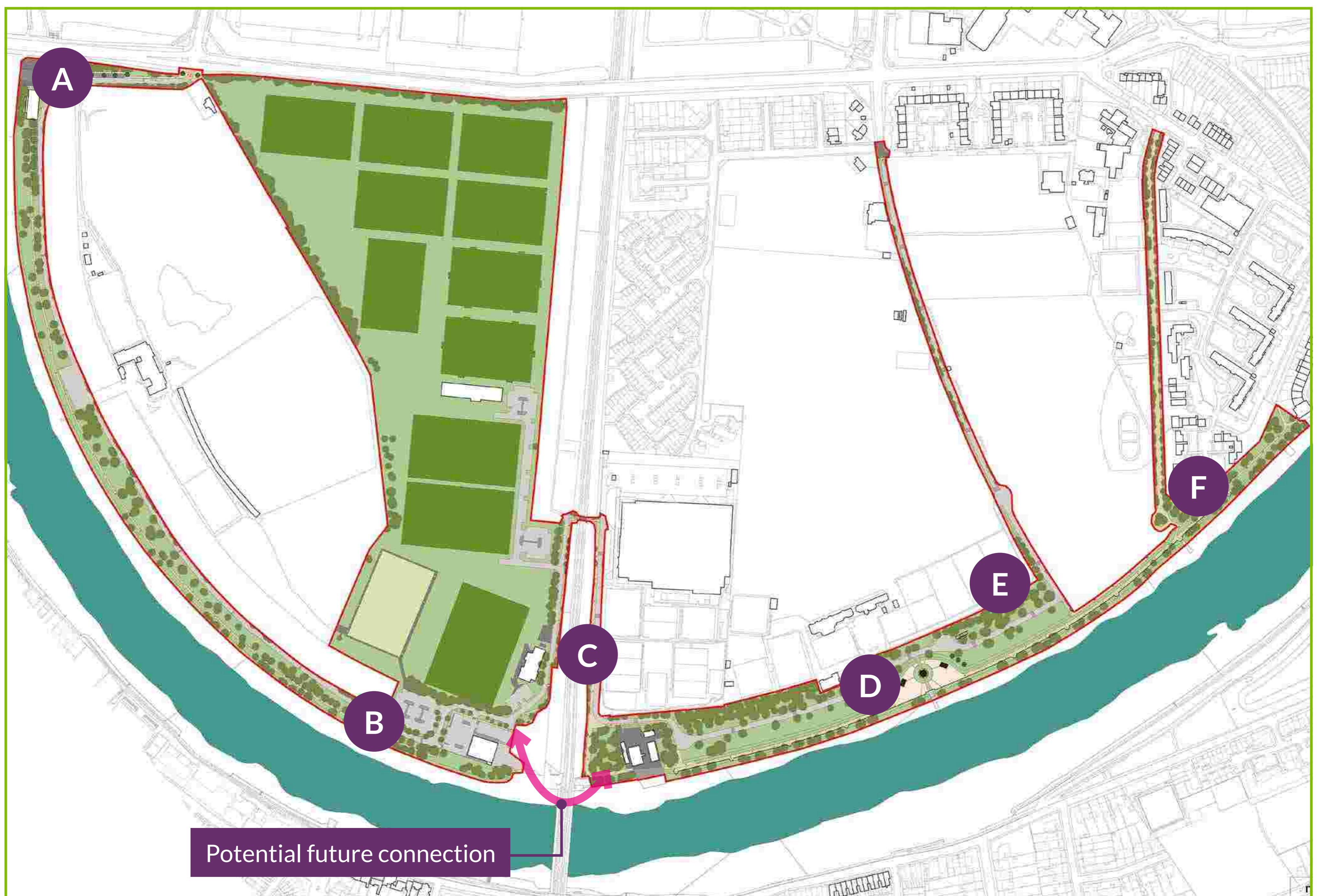
Other people and organisations that have been engaged so far include an ecologist, a bandstand expert and a cultural events specialist concerning the restoration of the bandstand and Sustrans for sustainable travel and greenways.

The public realm design team will continue to work with these stakeholders as well as with other local community groups to ensure long term success of Dukes Meadows.



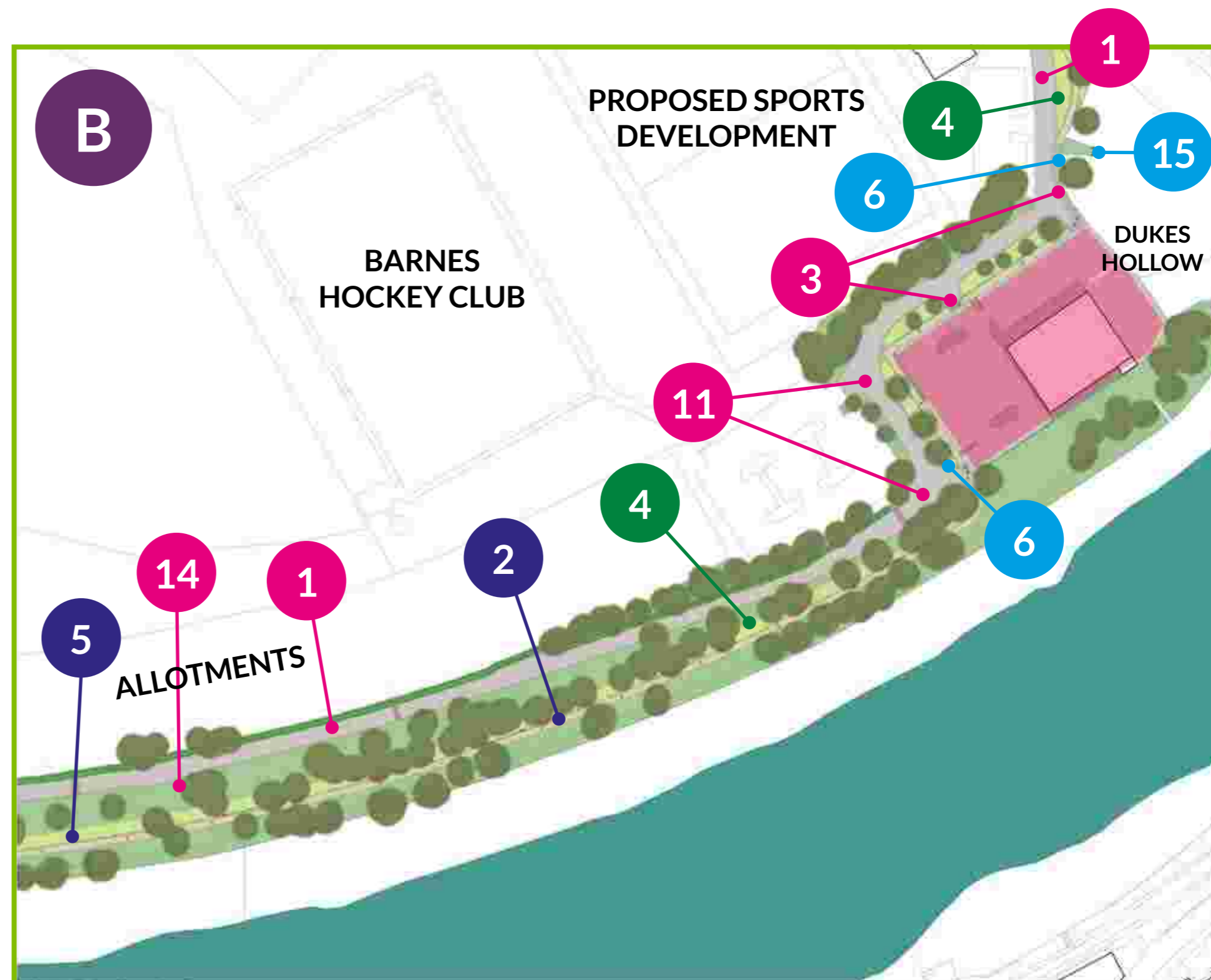
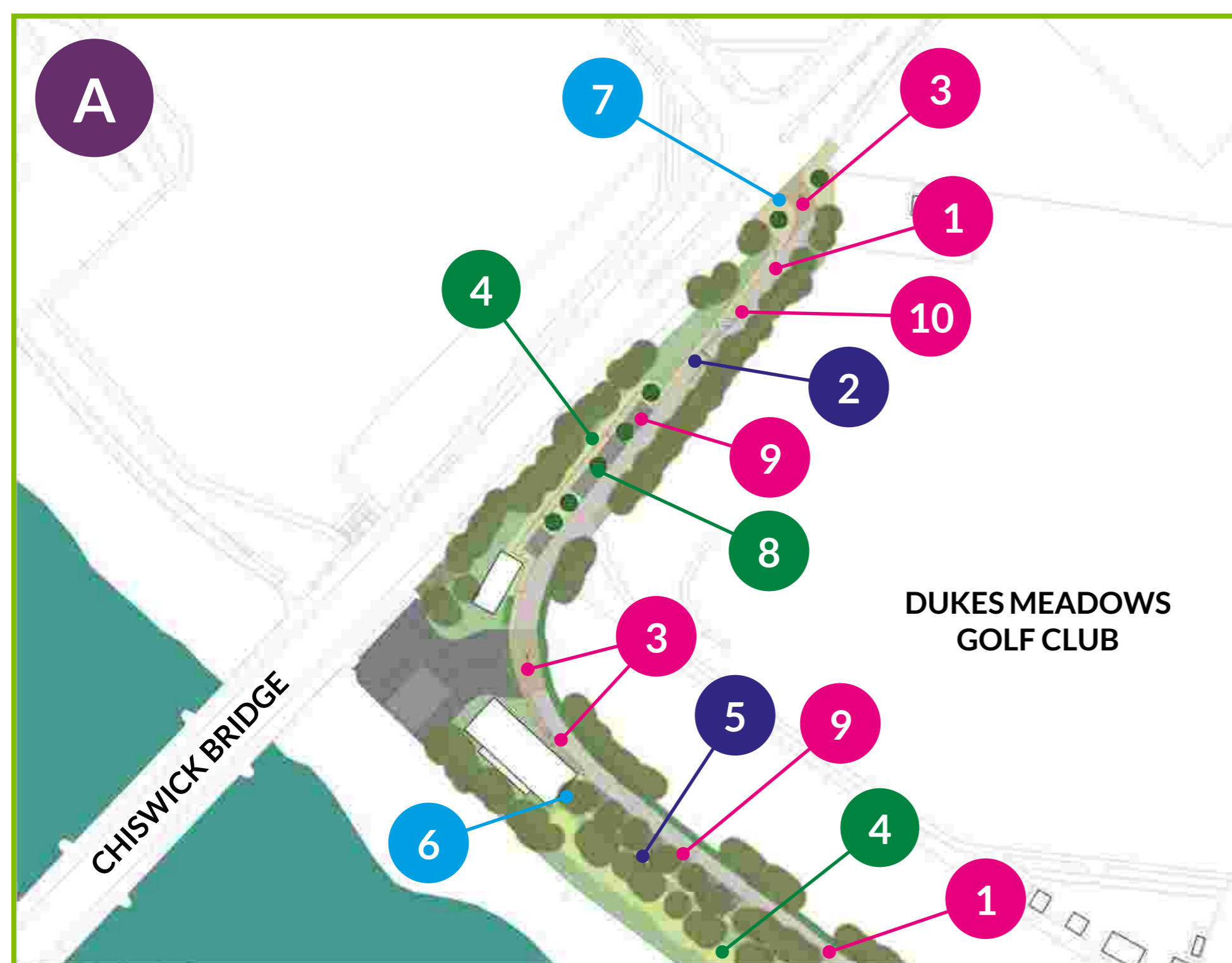
Potential future connection

Image supplied by Moxon Architects Ltd



DUKES MEADOWS

PUBLIC REALM



1

Road resurfacing to improve experience for drivers and cyclists

2

Towpath improvements to include upgrading of existing surfaces with self-binding gravel, widening of the Dan Mason Drive section of the towpath and introducing new sections of path to take pedestrians off the roads

3

Highly visible areas of shared surface introduced with associated signage indicating priority for pedestrians

4

Areas of proposed planting made up of lowland meadow in open areas and native understorey planting in woodland areas

5

Benches refurbished

6

Small-scale route signage

7

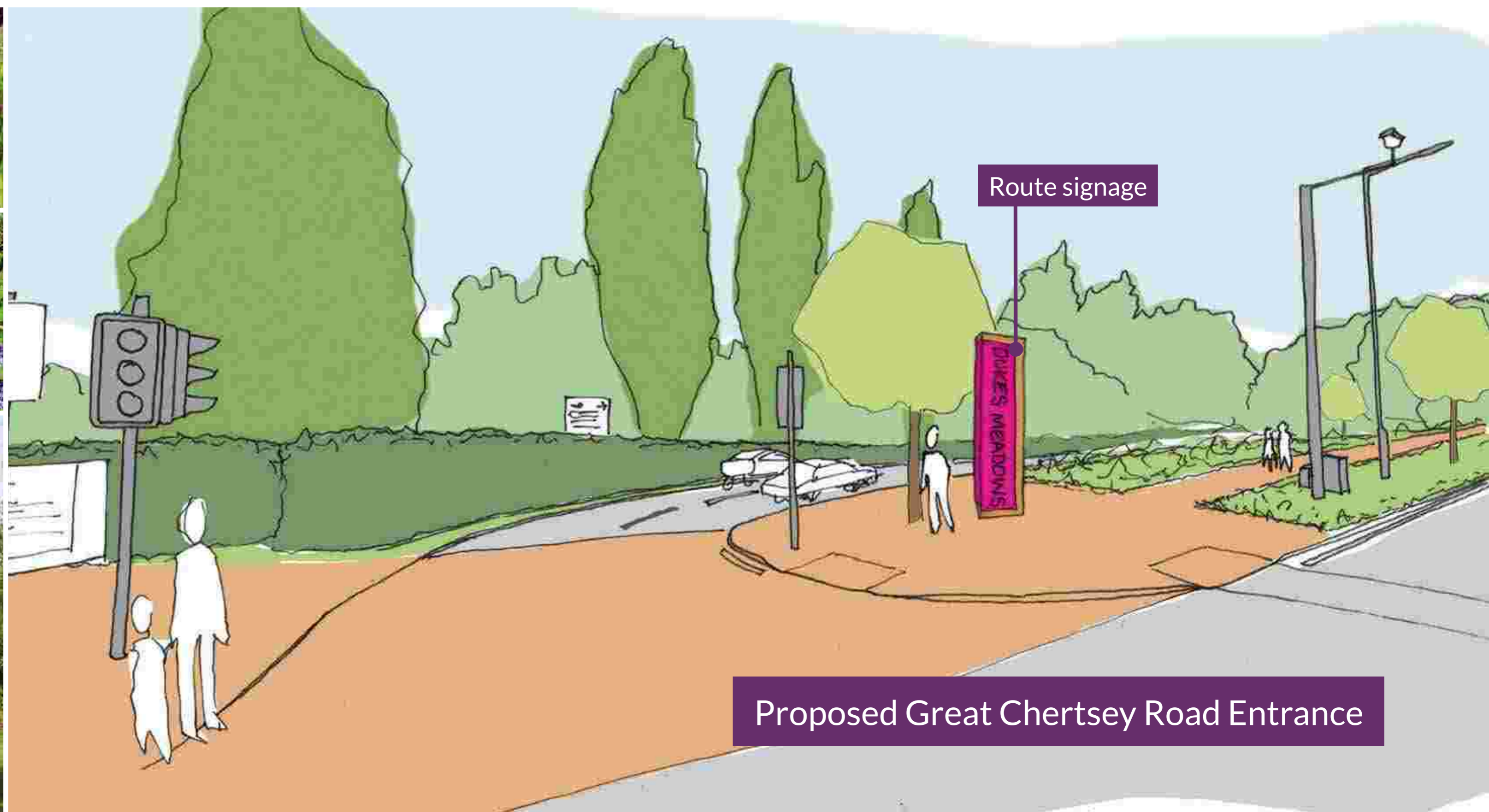
Large-scale iconic entrance signage

8

Native tree planting in accordance with the local Biodiversity Action Plan

9

Protected reinforced grass to protect grass and allow parking only for selected events



DUKES MEADOWS

PUBLIC REALM



10

Dan Mason Drive road build-out modified to increase visibility and safety with mirrors to improve safety at corners

11

Minor road widening, cut back vegetation and mirrors to improve safety on bends

12

Low level lighting along the new and upgraded sections of the towpath (applies across whole site, not visible on plans)

13

Tree and shrub thinning strategy along the riverbank, focussing on: a) felling of Sycamore trees, b) crown-lifting other tree species up to a height of 3-4m in order to frame views, c) some tree-pollarding, and d) management of Japanese knotweed (applies across whole site, not visible on plans)

14

Passing places to improve traffic flow

15

Enhanced Dukes Hollow viewing point with interpretation board

16

Felled tree logs laid to protect existing trees



12

Illustrative of lighting only



DUKES MEADOWS

PUBLIC REALM



17

Renovation of the bandstand and surrounding area focussing on the following interventions: a) replacement of sections of the bandstand wall between pillars with ornamental railings to increase visibility for spectators and performers, b) removal of sections of wall between the posts of the two shelters to increase usability, c) replacement of the low wall surrounding the bandstand with a planted border and area of lawn, d) new paved surface to entire area around the bandstand, and e) permanent picnic benches installed in the new paving

18

Cycle stands introduced in key locations

20

Repair and restoration of the ornamental railings and wall that runs alongside the River Thames

19

Replacement toilet block with deckchair rental kiosk

21

Interpretation boards in key locations along the towpath which tell the story of Dukes Meadows' history and ecology (not visible on plans)



Proposed renovation of the bandstand

RENOVATION OF THE BANDSTAND

The Dukes Meadows Bandstand occupies a key location along the riverside, and is a much loved part of the local community.

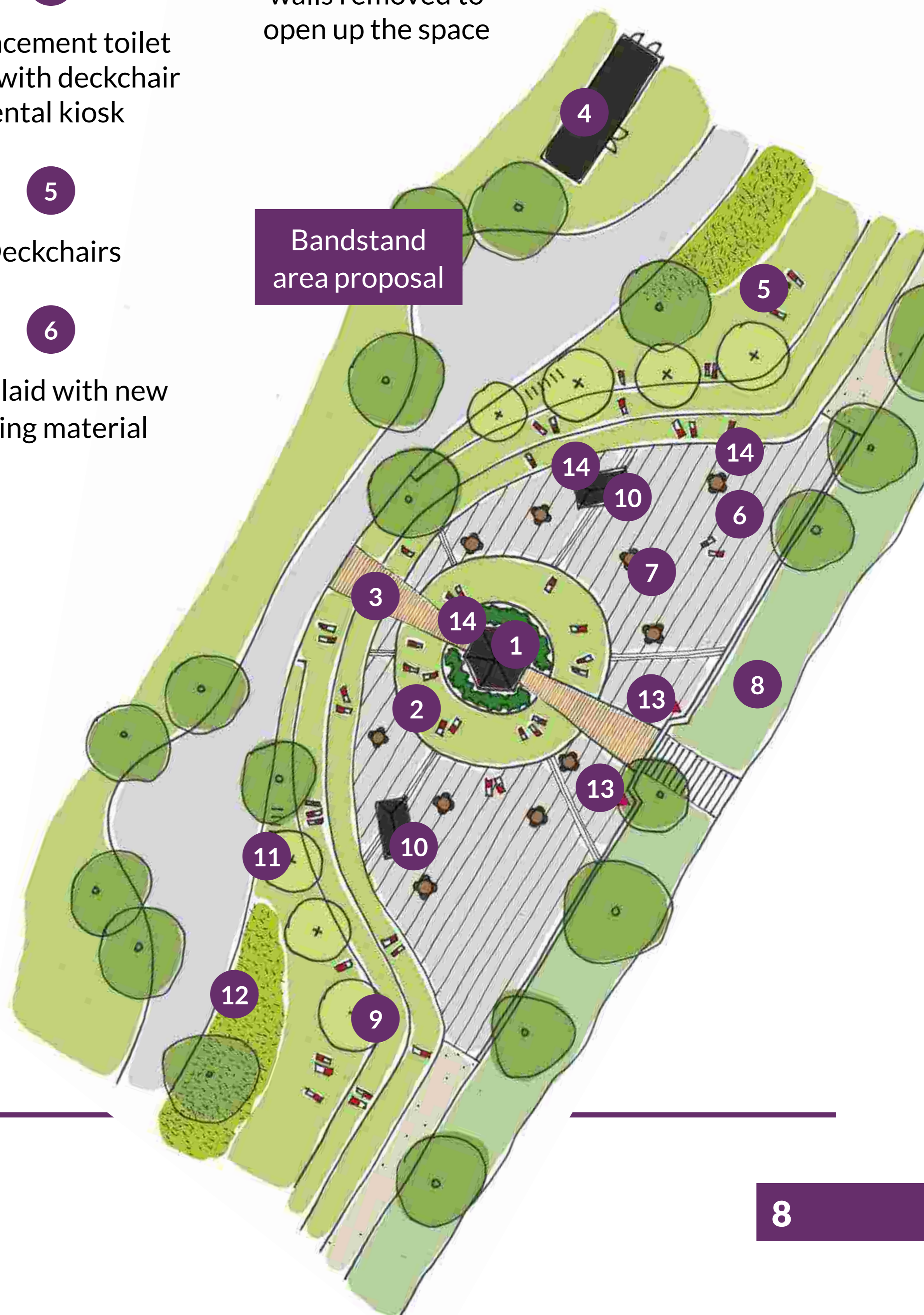
However due to the poor condition of the public realm around the bandstand, the space is not being used to its full potential.

The design team has liaised with events specialists to discuss how the space could be redesigned to encourage more people to engage with the bandstand in the hope that it could become a real asset to multiple user groups in the area.

The proposals for the new and improved bandstand area include increasing visibility and openness by removing the low walls from the bandstand and both neighbouring structures, encouraging the use of the bandstand for performances by installing a new area of lawn immediately around the bandstand which people can picnic on, improving the hard surface material and drainage, installing a three phase power supply, introducing a wi-fi connection and framing the space with the addition of new trees around the outside of the grass terraces.

All of these moves will help to create a significantly more attractive space which is more flexible for small scale events and activities, including yoga and fitness classes, musical performances, film screenings and art installations. A new toilet block with storage facilities will facilitate all of these.

- 1 Bandstand renovated and low walls between posts replaced with railings
- 2 Existing low wall around bandstand removed and replaced with an area of lawn and planting
- 3 Strip of feature paving
- 4 Replacement toilet block with deckchair rental kiosk
- 5 Deckchairs
- 6 Area laid with new paving material
- 7 Permanent picnic tables to increase usability of the space
- 8 Tree thinning strategy to improve visual connection to the river
- 9 Proposed trees to help enclose the space
- 10 Both shelters renovated and all walls removed to open up the space
- 11 Cycle stands
- 12 Lowland meadow made up of low maintenance grasses
- 13 Large scale signage highlighting the bandstand as an events venue
- 14 3 phase power supply installed for use at events



DUKES MEADOWS

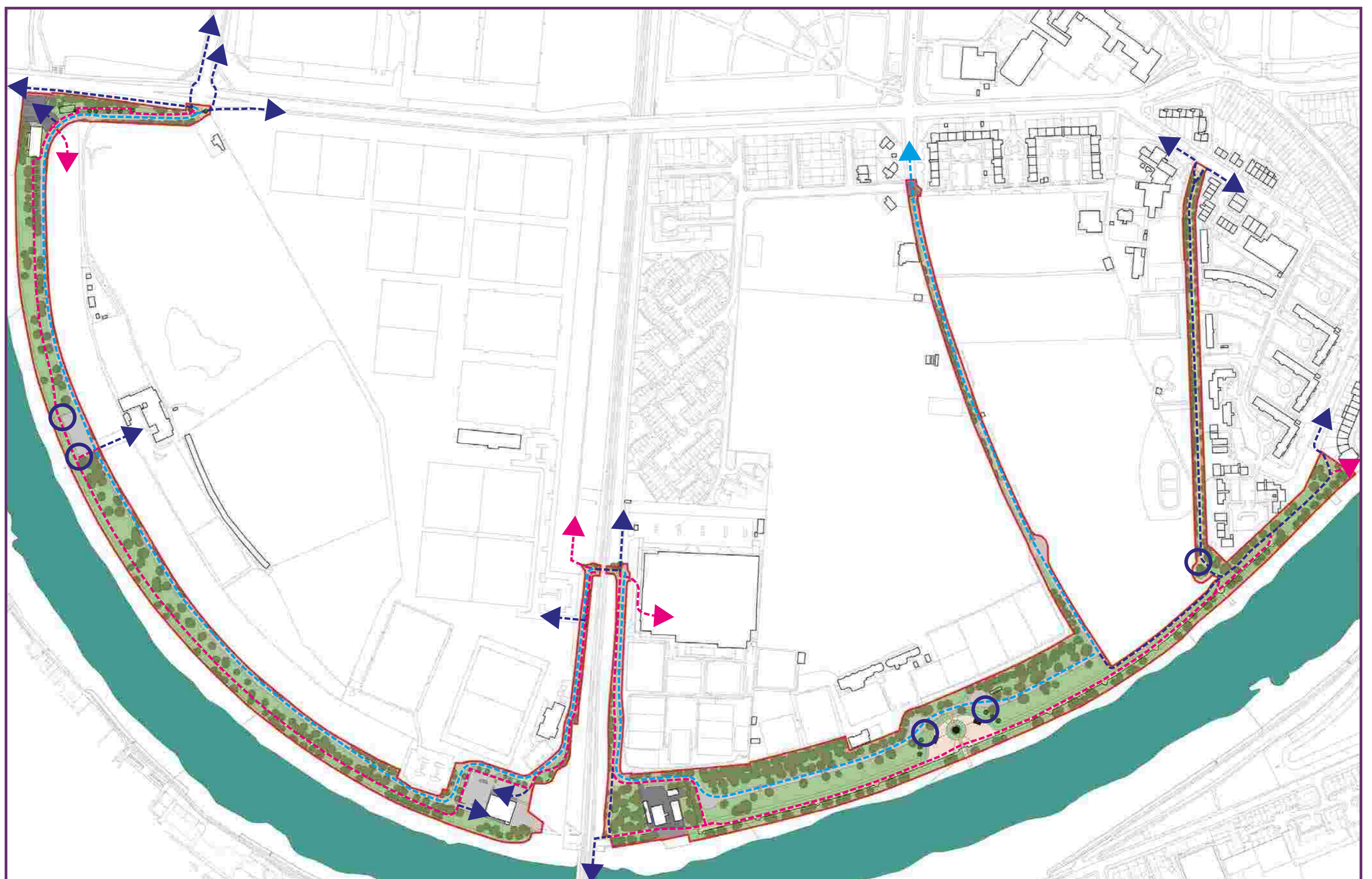
PUBLIC REALM

At the heart of the public realm proposals is a vision which focuses on improving the pedestrian experience. During the last public consultation period many people highlighted this as one of the principal downfalls of Dukes Meadows, with issues such as safety, signage, separation from vehicular traffic and connection to the river regularly coming up in the feedback.

As a result the design team has focused on creating a unified pedestrian connection from the Chiswick Bridge entrance right through to Edensor Gardens entrance, separate from vehicles and cyclists where possible, with the aim of increasing all the amenities

listed above in order to improve the feeling of safety and enjoyment for Dukes Meadows' many visitors who come on foot. There is also a long term aim, separate from this work, to install a footbridge to sit underneath Barnes Bridge, which would connect the two riverside sections of the towpath and take pedestrians off the road completely.

The previous public consultation also highlighted a need to improve the experience for cyclists using the site, which has resulted in increased signage, cycle stands, areas of shared surface and localised road widening being incorporated into the public realm scheme.



- Pedestrian routes
- Cycle routes
- - Shared pedestrian and cycle routes
- Proposed cycle hoops

NEW SPORTING FACILITIES

Dukes Meadows is home to a number of our leading sports clubs in the borough – Old Meadonians Football Club, Hounslow and Barnes Hockey Club, Chiswick Rugby Club, Thames Tradesmen Rowing Club and is used by clubs and organisations across London and the South East.

The site is identified as a sport hub for the area in the Borough Plan. The masterplan has been developed in partnership with the Rugby Football Union, The Football Association and the Football Foundation, British Rowing, London Youth Rowing, England Hockey, Sport England with each of our leading clubs having been central to these new plans.

All of our four leading clubs will see significant investment and improvement to their sports facilities with their long term occupancy and use secured to continue to deliver community sport and physical activity. Hounslow and the National Governing Bodies of Sport are continuing the on-going plans for the operational management with the leading clubs.

The plan highlights:

National recognition of the site for developing football by the FA Parklife Programme

National recognition of the site for developing rugby through the RFU Artificial Grass Pitch investment programme

Site of sub-regional importance for youth rowing with London Youth Rowing

Sub-regional importance for Hockey serving West London and surrounding boroughs

- 1 Remarked full size grass football pitch
- 2 Two full size, fenced and floodlit football Artificial Grass Pitches
- 3 New dedicated football clubhouse comprising 10 team changing rooms, social/clubroom, teaching space and ancillary accommodation
- 4 Football Clubhouse, facilities parking and delivery drop-off

- 5 Coach parking and turning area
- 6 Remarked senior rugby grass pitches
- 7 Existing fenced hockey artificial grass pitch
- 8 One full size partially fenced and floodlit rugby Artificial Grass Pitch
- 9 Rugby clubhouse facilities parking

- 10 Existing rugby clubhouse extended to provide additional rugby changing rooms and dedicated hockey changing
- 11 Improved playing fields parking
- 12 New rowing clubhouse
- 13 Rowing clubhouse parking and boat storage



NEW SPORTING FACILITIES

Proposed football pavilion



FOOTBALL

FA Parklife investment of £3.5million to transform the development of football on the site.

Meeting the growing needs of Hounslow youth football and the FA through the provision of the two new FIFA Quality Artificial Grass Pitch investment programme.

Meeting the growing needs of all different formats of football, small-sided, competition and training.

Securing the presence of Old Meadonians at the heart of the proposal making them preferred partners of the whole football scheme with input on design and operational model.

Typically a well-maintained natural turf pitch can offer 6 - 8 playing hours of football a week, however Artificial Grass Pitches can easily accommodate double that volume on a daily basis – over 80 hours per week. An increase in the number of playing hours can engage with more audiences and encourage children to increase physical activity and improve well-being.

ROWING

New Chiswick Boathouse for Thames Tradesmen Rowing Club.

The boathouse will become the West London base for London Youth Rowing.

Securing the future use of Thames Tradesmen Rowing Club on site.

The Chiswick Boathouse will also become a focal point for physical activity for the site linking the Thames Path for runners, cyclists, walkers and general recreation and use of Dukes Meadows linking to the open space across the bridge to the promenade and beyond into Dukes Meadows.

Riverside Café opening up the Thames Path and the great views of the river.



Proposed rowing clubhouse

NEW SPORTING FACILITIES

RUGBY

RFU World Rugby compliant Artificial Grass Pitch investment programme of £1million.

The site to become a focal point for West London through the Local Rugby Partnership and opening up the site to greater use across all ages for the sport.

Secured use and access for Chiswick Rugby Club for competition, training and rugby events.

The RFU states that through the investment programme it is expected that each Artificial Grass Pitch will create between 1,500 and 2,000 hours of additional access to play per year.

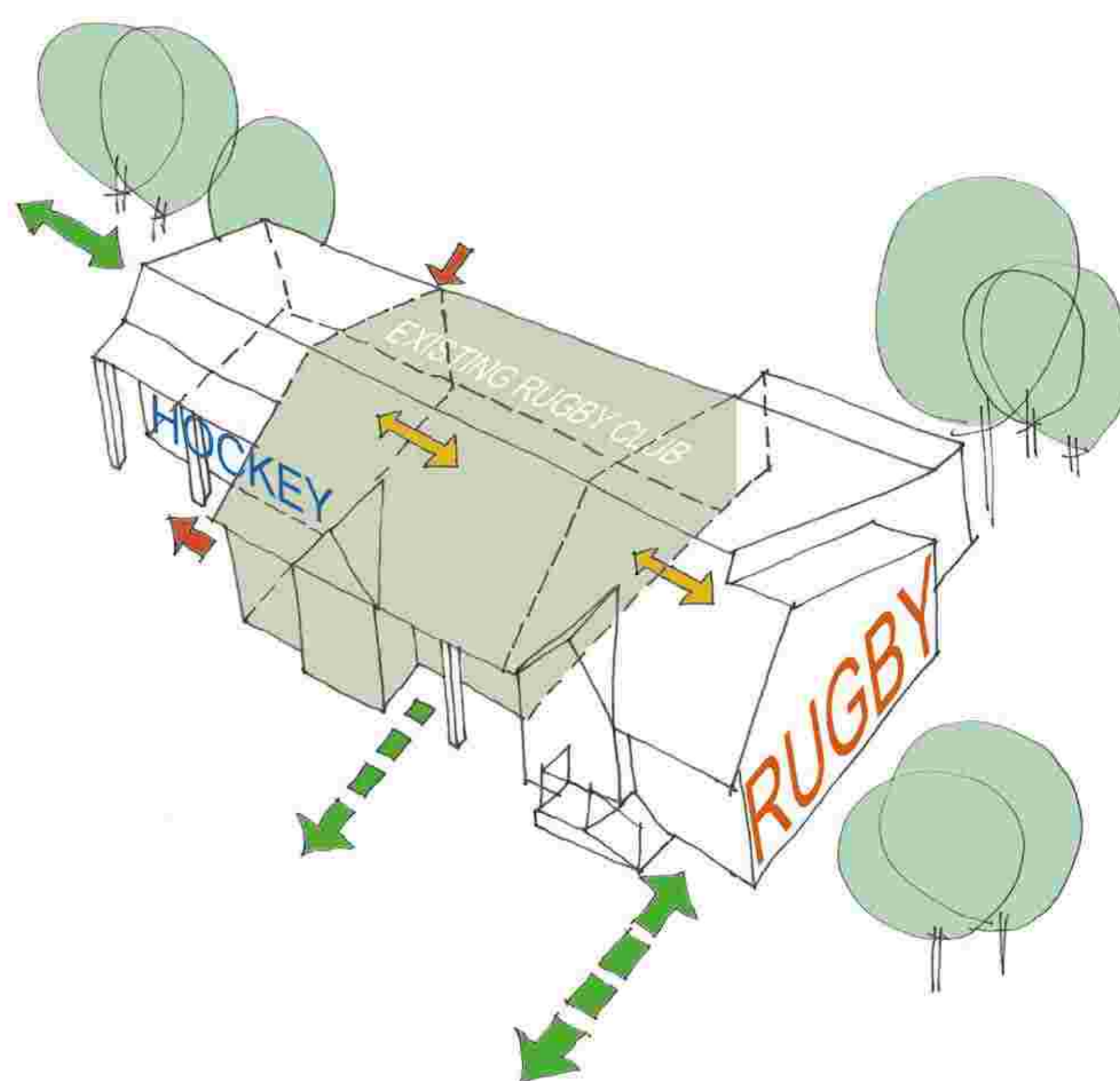


HOCKEY

Refurbished hockey pitch to address the current needs of the pitch and increase the capacity for hockey on site.

New changing provision to meet the national league requirements of the club and address the lack of changing provision for hockey as part of the Rugby Clubhouse Extension.

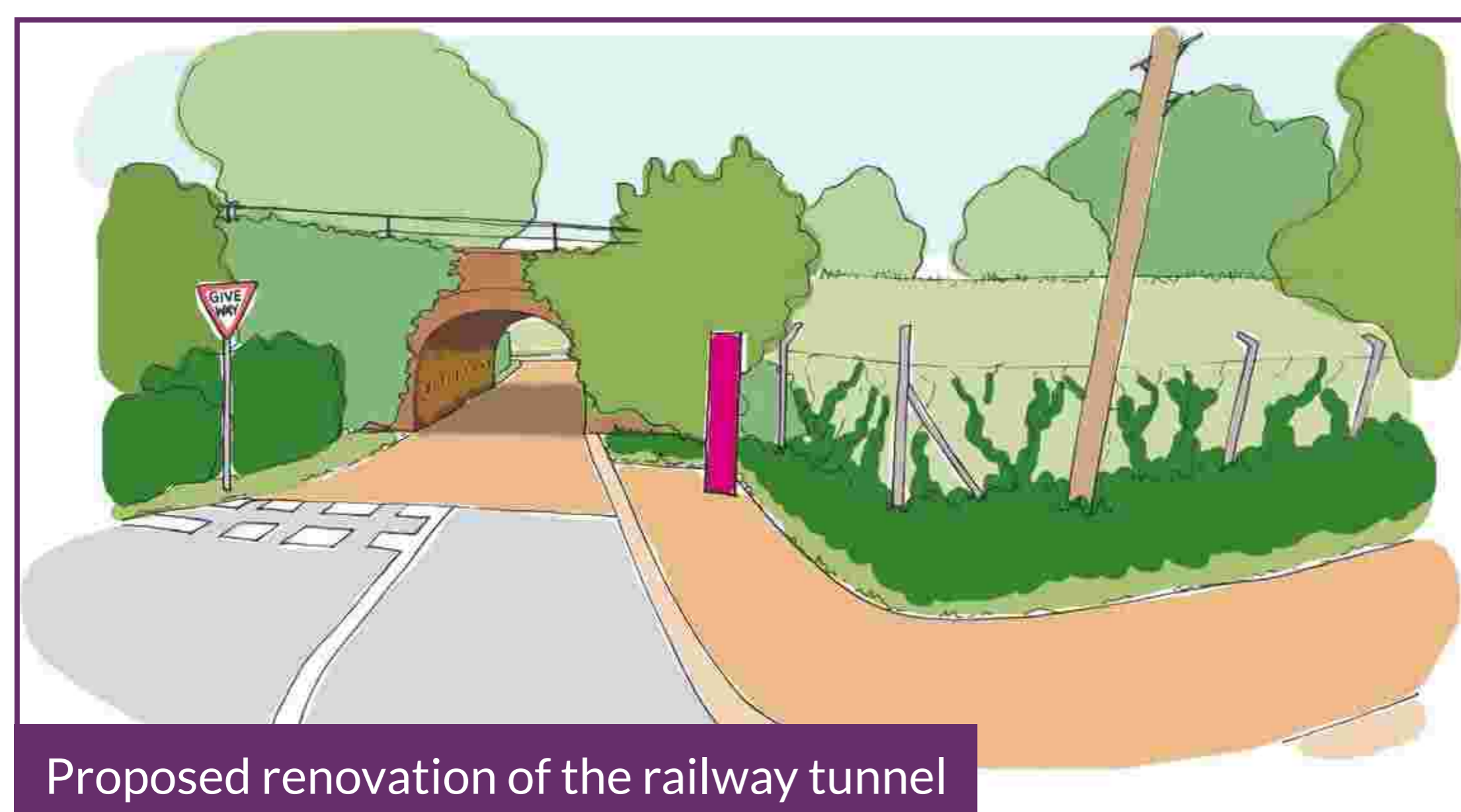
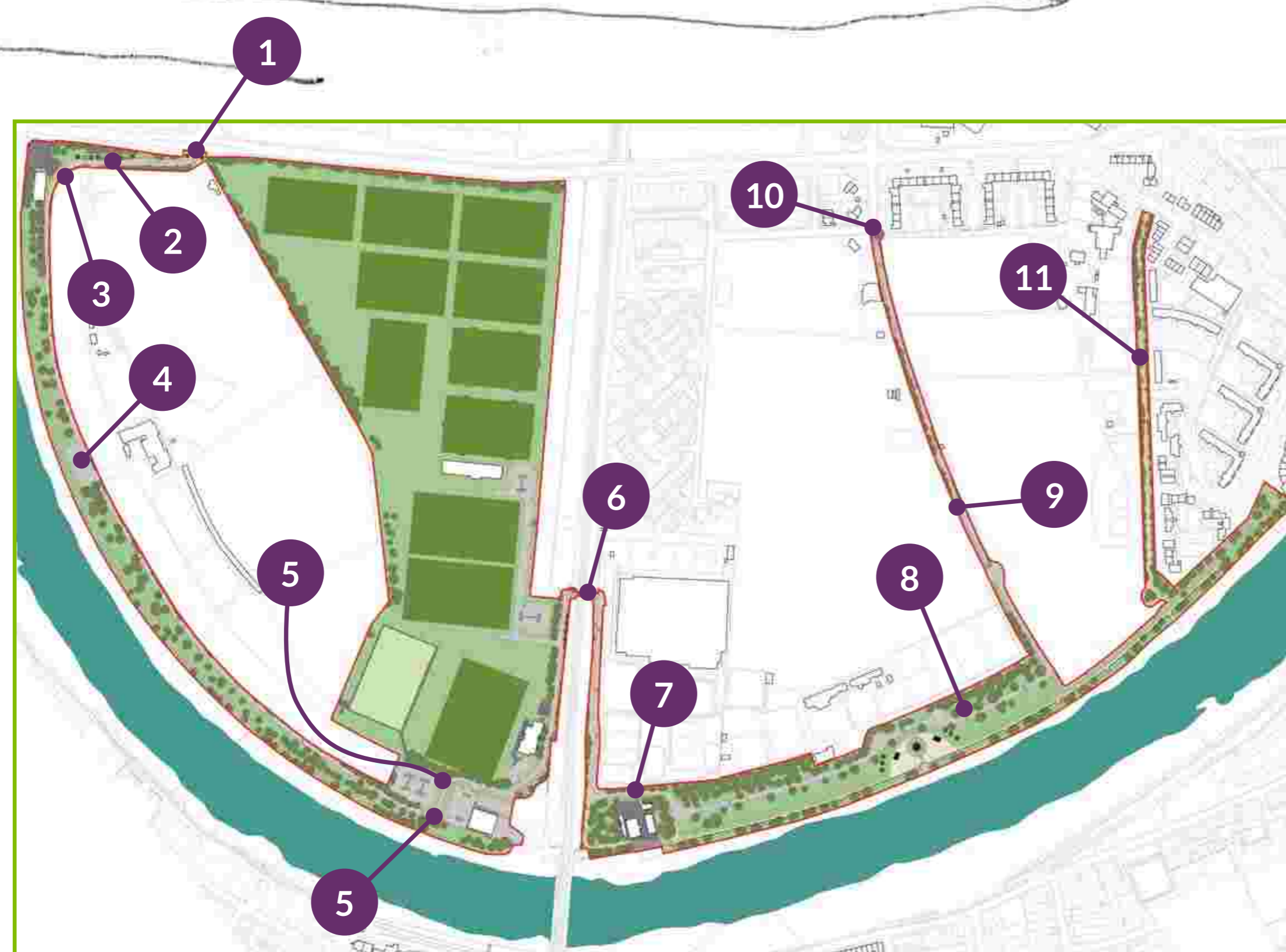
Creating a true presence for hockey on Dukes Meadows and meet the ongoing need for hockey provision in West London.



TRAVEL AND ACCESS

Previous dialogue with the users of Dukes Meadows highlighted a number of issues in respect of the existing situation including the constrained bends along Dan Mason Drive and restricted passing places, pedestrian safety, informal parking concerns, safety concerns of the tunnel and overgrown vegetation and general disrepair of Dan Mason Drive and The Promenade.

We have considered these and propose the following improvements.



- 1 Existing carriageway 'build out' on Dan Mason Drive close to the junction with Great Chertsey Road improved to make it clearer for approaching vehicles and give-way markings. Bollards and signage added to improve safety and legibility for approaching vehicles.
- 2 Parking bays and cycle stands added along Dan Mason Drive for casual users of Dukes Meadows.
- 3 Improve visibility and pedestrian safety adjacent to the Tideway Scullers boathouse at the bend in Dan Mason Drive by adding an area of pedestrian-priority shared surface, cutting back vegetation and adding signage.
- 4 Area opposite entrance to Dukes Meadows Golf and Tennis to be formalised to provide additional car parking, Vehicular passing places proposed along Dan Mason Drive.
- 5 Localised road widening to facilitate better coach and delivery vehicle access along Dan Mason Drive.
- 6 A new shared surface treatment for the tunnel and immediate approaches and provision of a passing place adjacent to the allotments. Arrangement accompanied by improved signage and lighting to emphasise the shared use surface.
- 7 Pedestrian-priority area of shared surface added along The Promenade bend adjacent to Emmanuel Boat Club, taking pushchair and wheelchair users away from the existing stepped access route across the boathouse's slipway.
- 8 Parking formalised and cycle stands added along The Promenade.
- 9 Resurfacing Riverside Drive
- 10 New shared surface threshold at junction of Riverside Drive with Alexandra Gardens.
- 11 Resurfacing of Promenade Approach

THANK YOU AND NEXT STEPS

Thank you for visiting our exhibition today on our plans for Dukes Meadows.

.....

We have a number of upcoming consultation events with local clubs and stakeholders to continue to assist with the shaping of final plans and the future development of this important site for health, well-being, open space and sport in Hounslow.

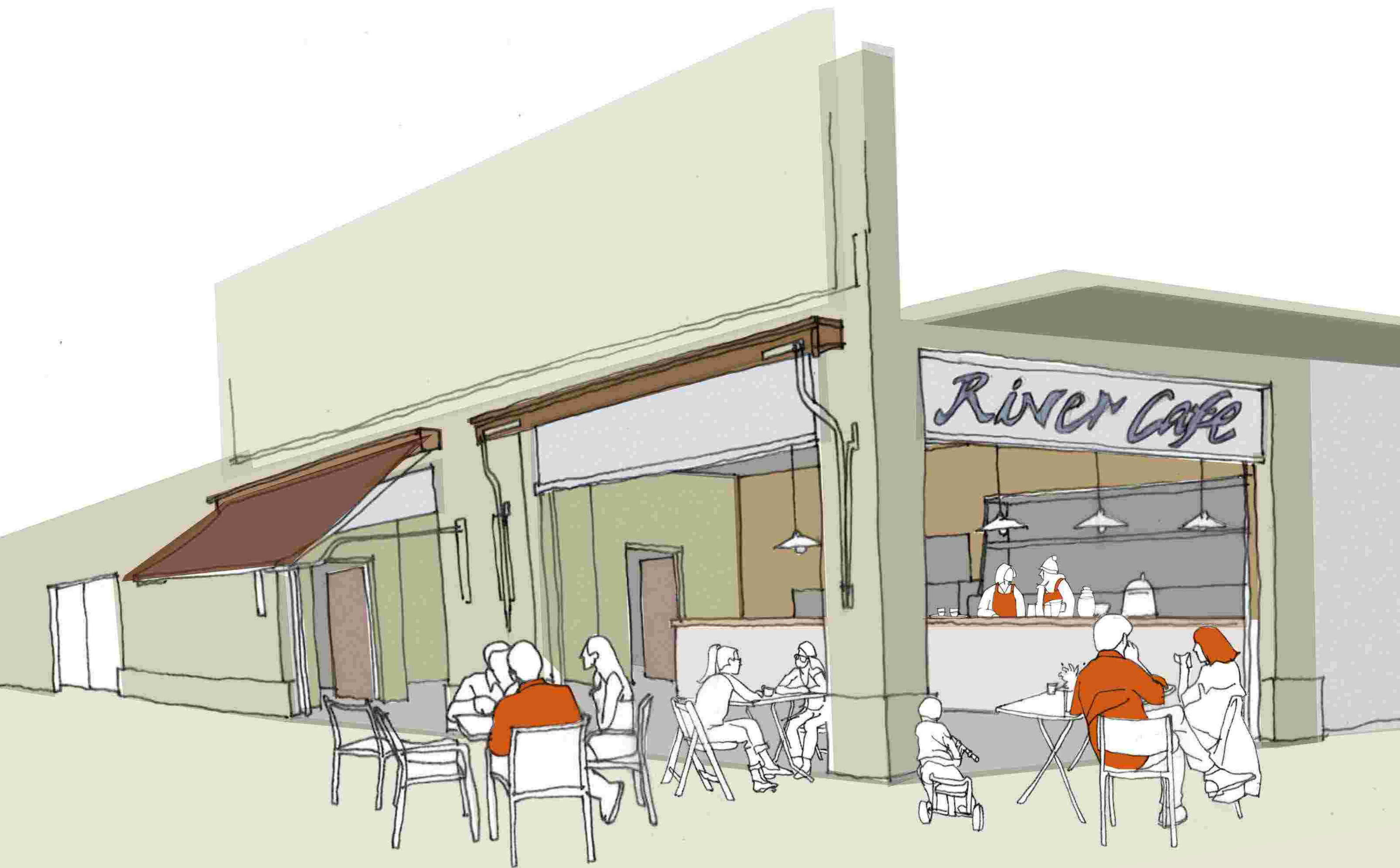
The proposals presented today will form two planning applications to be submitted to the council in due course.

HAVE YOUR SAY

Before you go, please take the time to fill in a feedback form and leave it with us.

The information from today's exhibition can also be found online at:

www.hounslow.gov.uk/consultations along with an online version of the feedback form.



Proposed Riverside Café