

## **Deposited Documents – Reference TMO/P055/23**

Held on deposit online - [https://www.hounslow.gov.uk/downloads/20165/traffic\\_notices](https://www.hounslow.gov.uk/downloads/20165/traffic_notices)

Placed on deposit on Friday, 20 November 2024

### **The Butts Controlled Parking Zone – Proposed amendment to the resident permit criteria**

#### **Contents:**

- 1. Notice of making dated 20 September 2024**
- 2. Proposed Traffic Management Order**
  - A. The London Borough of Hounslow (The Butts) (Parking Places) (2009, No.22) (Amendment No.8) Order 2024
- 3. Notice of Intent dated 10 November 2023**
- 4. Proposed Traffic Management Order**
  - A. The London Borough of Hounslow (The Butts) (Parking Places) (2009, No.22) (Amendment No.\*\*\*) Order 20\*\*
- 5. Statement of Reasons**
- 6. Plan**
- 7. Existing Traffic Management Orders**
  8. The London Borough of Hounslow (The Butts) (Parking Places) (No.22) Order 2009 [2009/37]

Any queries regarding these deposited documents should be sent by email to [trafficorders@hounslow.gov.uk](mailto:trafficorders@hounslow.gov.uk) or alternatively a voicemail can be left on extension 3322.

## **The Butts Controlled Parking Zone – Amendment to the resident permit criteria**

### **A. The London Borough of Hounslow (The Butts) (Parking Places) (2009, No.22) (Amendment No.8) Order 2024**

1. The London Borough of Hounslow gives notice that on 18 September 2024 it made the above-mentioned Order under the Road Traffic Regulation Act 1984. The orders will come into operation on 21 September 2024.
2. The general effect of the Parking Places amendment order is to allow specific residents of Hamlet House, Sonnet House and Tintern House, Catherine Wheel Yard, Brentford, to be eligible for a resident parking permit within The Butts controlled parking zone.
3. Documents giving further information of the proposed Orders can be viewed for a period of 6 weeks from the date of this Notice online at [hounslow.gov.uk](https://hounslow.gov.uk) by typing in the term “traffic notices” in the search bar.
4. Any person desiring to question the validity of the Orders or any provision contained therein on the grounds that they are not within the relevant powers of the Road Traffic Regulation Act 1984 or any other relevant regulations made thereunder have not been compiled with in relation to the Order may, within six weeks of the date on which the Orders were made, make an application for the purpose to the High Court.

Dated 20 September 2024

Davina Millership  
Assistant Director for Traffic, & Transport & Parking

# Traffic Management Order

2024 No.48

---

The London Borough of Hounslow (The Butts) (Parking Places) (2009, No.22) (Amendment No.8) Order 2024

Made on 18 September 2024

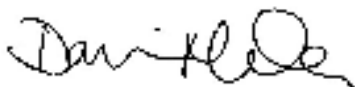
Coming into operation on 21 September 2024

---

The Council of the London Borough of Hounslow, having consulted the Commissioner of Police of the Metropolis, in exercise of the powers conferred by sections 45, 46, 49, 51 and 124 of the Road Traffic Regulation Act 1984<sup>a</sup> as amended, and of all other powers thereunto enabling hereby make the following Order:

1. This Order may be cited as the London Borough of Hounslow (The Butts) (Parking Places) (2009, No. 22) (Amendment No.8) Order 2024 and shall come into operation for all purposes on 21 September 2024.
2. Without prejudice to the validity of anything done or to any liability incurred before the coming into operation of this Order The London Borough of Hounslow (The Butts) (Parking Places) (No. 22) Order 2009<sup>b</sup>, as amended, shall have affect as though:
  - (a) in Article 26 paragraph (5) is substituted with the following paragraph:
    - (5) “Notwithstanding the foregoing provisions of this Order, no permit shall be issued to a resident of a housing unit subject to a planning consent to which has been appended an Informative, Conditions, or which is restricted by a planning obligation made under section 106 of the Town and Country Planning Act 1990<sup>c</sup>, indicating that such resident will not be entitled to a residents' parking permit”
  - ; and
  - (b) the items numbered 13, 14, and 15 were added to Schedule 10 to that Order as detailed in the Schedule to this Order.

Dated this eighteenth day of September 2024



Assistant Director of Traffic, Transport & Parking  
(The officer appointed for this purpose)

---

<sup>a</sup> 1984 c. 27

<sup>b</sup> LBH 2009/37

<sup>c</sup> 1990 c.8

## **Schedule**

13. Hamlet House, Catherine Wheel Yard, Brentford
14. Sonnet House, Catherine Wheel Yard, Brentford
15. Tintern House, Catherine Wheel Yard, Brentford

---

### **EXPLANATORY NOTE**

(This Note is not part of the Order, but is intended to indicate its general purport.)

The Hounslow (The Butts) (Parking Places) (No. 22) Order 2009 designates parking places in streets in the vicinity of The Butts in the London Borough of Hounslow at which charges may be made by the Council of the Borough for vehicles authorised by that Order to be left in those parking places during the permitted hours.

This Order amends the Order of 2009 by allowing specific residents of Tintern House and Sonnet House, Catherine Wheel Yard, Brentford, to be eligible for a resident parking permit.



**Deposited Documents – Reference TMO/P055/23**

Held on deposit online - [https://www.hounslow.gov.uk/downloads/20165/traffic\\_notices](https://www.hounslow.gov.uk/downloads/20165/traffic_notices)

Placed on deposit on Friday, 10 November 2023

End of Consultation period is Friday, 1 December 2023

**The Butts Controlled Parking Zone – Proposed amendment to the resident permit criteria**

**Contents:**

- 1. Notice of Intent dated 10 November 2023**
- 2. Proposed Traffic Management Order**
  - A. The London Borough of Hounslow (The Butts) (Parking Places) (2009, No.22) (Amendment No.\*\*\*) Order 20\*\*
- 3. Statement of Reasons**
- 4. Plan**
- 5. Existing Traffic Management Orders**
  - A. The London Borough of Hounslow (The Butts) (Parking Places) (No.22) Order 2009 [2009/37]

Any queries regarding these deposited documents should be sent by email to [trafficorders@hounslow.gov.uk](mailto:trafficorders@hounslow.gov.uk) or alternatively a voicemail can be left on extension 3322.

## **The Butts Controlled Parking Zone – Proposed amendment to the resident permit criteria**

### **A. The London Borough of Hounslow (The Butts) (Parking Places) (2009, No.22) (Amendment No.\*\*\*) Order 20\*\***

1. The London Borough of Hounslow proposes to make the above Order under the Road Traffic Regulation Act 1984.
2. The general effect of the Parking Places amendment order is to allow specific residents of Hamlet House, Sonnet House and Tintern House, Catherine Wheel Yard, Brentford, to be eligible for a resident parking permit within The Butts controlled parking zone.
3. Documents giving further information of the proposed Order can be viewed for a period of 21 days from the date of this Notice online at [hounslow.gov.uk](https://hounslow.gov.uk) by typing in the term “traffic notices” in the search bar.
4. Any person wishing to object to the proposed Order should send a statement in writing, stating the grounds of the objection, to the Assistant Director of Traffic, Transport & Parking, Hounslow Council, Hounslow House, 7 Bath Road, Hounslow, Middlesex TW3 3EB or by email to [trafficorders@hounslow.gov.uk](mailto:trafficorders@hounslow.gov.uk) quoting the reference TMO/P055/23, to be received by no later than Friday, 1 December 2023.

Dated 10 November 2023

Jefferson Nwokeoma  
Assistant Director for Traffic, & Transport & Parking

# Traffic Management Order

20\*\* No.\*\*

---

The London Borough of Hounslow (The Butts) (Parking Places) (2009, No.22) (Amendment No.\*\*)  
Order 20\*\*

Made on \*\* \*\*\*\*\* 20\*\*

Coming into operation on \*\* \*\*\*\*\* 20\*\*

---

The Council of the London Borough of Hounslow, having consulted the Commissioner of Police of the Metropolis, in exercise of the powers conferred by sections 45, 46, 49, 51 and 124 of the Road Traffic Regulation Act 1984<sup>a</sup> as amended, and of all other powers thereunto enabling hereby make the following Order:

1. This Order may be cited as the London Borough of Hounslow (The Butts) (Parking Places) (2009, No. 22) (Amendment No.\*\*\*) Order 20\*\* and shall come into operation for all purposes on \*\* \*\*\*\*\* 20\*\*.
2. Without prejudice to the validity of anything done or to any liability incurred before the coming into operation of this Order The London Borough of Hounslow (The Butts) (Parking Places) (No. 22) Order 2009<sup>b</sup>, as amended, shall have effect as though:
  - (a) in Article 26 paragraph (5) is substituted with the following paragraph:
    - (5) "Notwithstanding the foregoing provisions of this Order, no permit shall be issued to a resident of a housing unit subject to a planning consent to which has been appended an Informative, Conditions, or which is restricted by a planning obligation made under section 106 of the Town and Country Planning Act 1990<sup>c</sup>, indicating that such resident will not be entitled to a residents' parking permit"
  - ; and
  - (b) the items numbered \*\*, \*\*, and \*\* were added to Schedule 10 to that Order as detailed in the Schedule to this Order.

Dated this \*\*\*\*\* day of \*\*\*\*\* 20\*\*

Assistant Director of Traffic, Transport & Parking  
(The officer appointed for this purpose)

---

<sup>a</sup> 1984 c. 27

<sup>b</sup> LBH 2009/37

<sup>c</sup> 1990 c.8

## **Schedule**

- \*\* Hamlet House, Catherine Wheel Yard, Brentford
  - \*\* Sonnet House, Catherine Wheel Yard, Brentford
  - \*\* Tintern House, Catherine Wheel Yard, Brentford
- 

### **EXPLANATORY NOTE**

(This Note is not part of the Order, but is intended to indicate its general purport.)

The Hounslow (The Butts) (Parking Places) (No. 22) Order 2009 designates parking places in streets in the vicinity of The Butts in the London Borough of Hounslow at which charges may be made by the Council of the Borough for vehicles authorised by that Order to be left in those parking places during the permitted hours.

This Order amends the Order of 2009 by allowing specific residents of Tintern House and Sonnet House, Catherine Wheel Yard, Brentford, to be eligible for a resident parking permit.



## **The Butts Controlled Parking Zone – Proposed amendment to the resident permit criteria**

### **Statement of Reasons**

Charlton and Albany House comprises 91 homes provided across three residential blocks, Charlton House, Albany House and Osier Court. In addition, there are 27 garages let on licences, 19 surface level parking spaces for the use of residents, and 71 public car parking spaces located within the Albany Parade 'pay and display' car park. Existing residents of Charlton and Albany House are also eligible to apply for a residents parking permit within the Brook Road South Controlled Parking Zone (CPZ).

Full Planning Permission (Ref. 00015/L/S2) for the comprehensive redevelopment of Charlton and Albany House was granted by the London Borough of Hounslow on 5th August 2022.

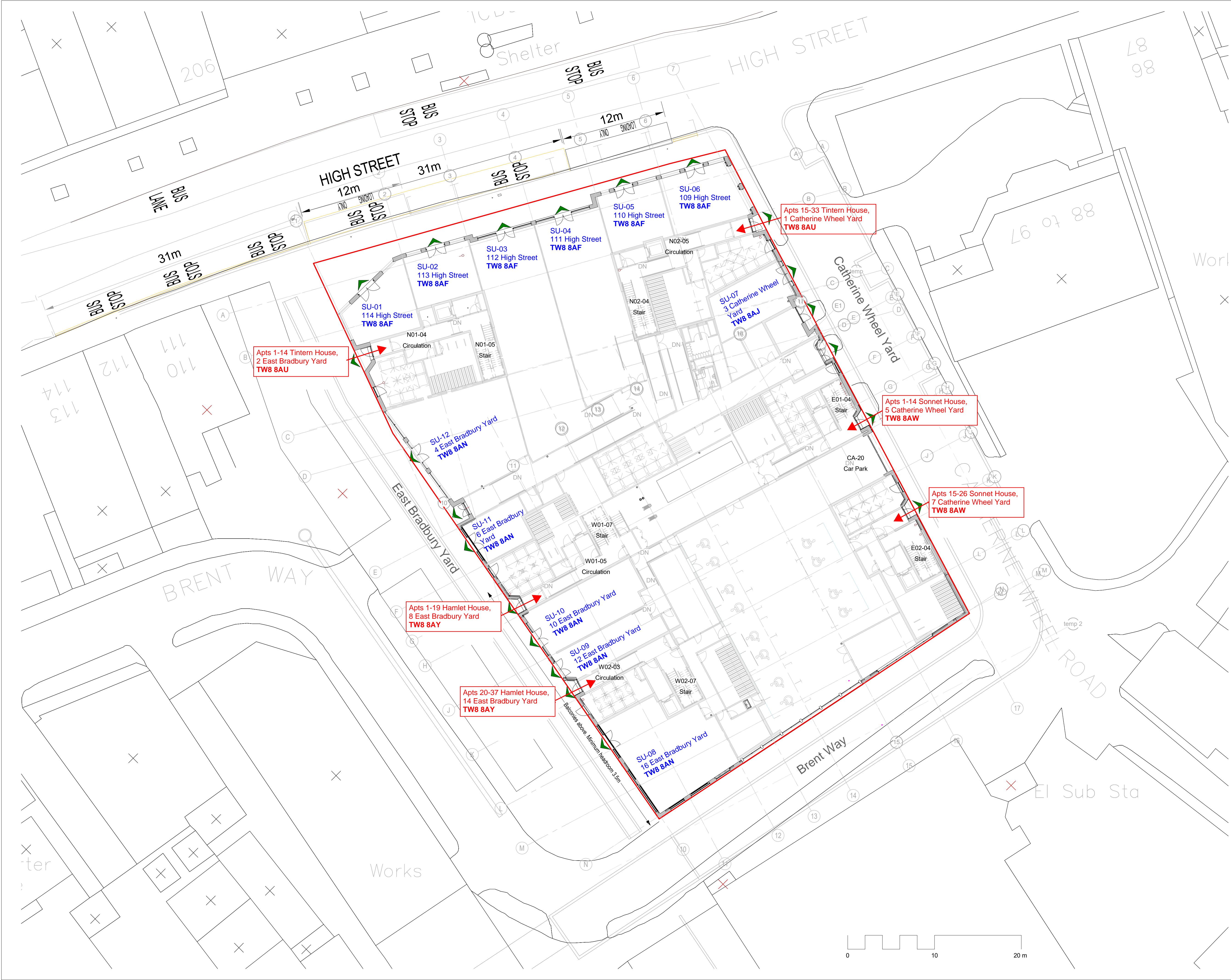
The comprehensive redevelopment of Charlton and Albany House will require existing residents to be rehoused, either on a temporary basis prior to returning to the redeveloped Charlton and Albany House, or on a permanent basis.

To minimise the disruption for existing residents of Charlton House, Albany House and Osier Court (the Estate), Brentford Block D has been identified as a priority rehousing option allowing eligible residents to move directly to a permanent new home within the borough that meets their needs.

Condition 35 pursuant to the Full Planning Permission (Ref. 00607/BN/S1) for 'Block D' restricts eligibility for resident's parking permits to those who are eligible for a disabled badge (12 no. blue badge spaces are provided on site). However, it is anticipated that some existing residents of Charlton House, Albany House, and Osier Court will choose to move into 'Block D'. Therefore, an application to vary Condition 35 to extend eligibility for resident's parking permits to any existing resident of the Estate who would be eligible for a resident's parking permit within The Butts CPZ under the provisions of the Unilateral Undertaking for Charlton House, Albany House, and Osier Court. In doing so, this application will ensure that no existing resident of the Estate would be worse off should they move into 'Block D'.

The proposed parking places amendment order would amend the existing The Butts CPZ order to align with the amended Condition 35.



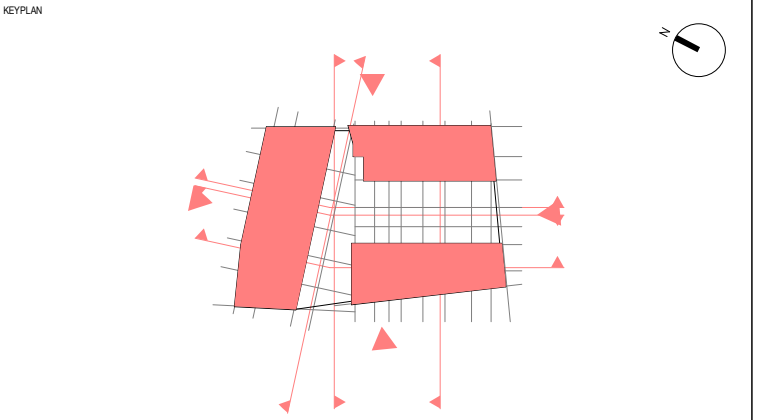


BUILDING DESIGN PARTNERSHIP SHALL HAVE NO RESPONSIBILITY FOR ANY USE MADE OF THIS DOCUMENT OTHER THAN FOR THAT WHICH IT WAS PREPARED AND ISSUED.  
ALL DIMENSIONS SHOULD BE CHECKED ON SITE.  
DO NOT SCALE FROM THIS DRAWING  
ANY DRAWING ERRORS OR DIVERGENCIES SHOULD BE BROUGHT TO THE ATTENTION OF BUILDING DESIGN PARTNERSHIP AT THE ADDRESS SHOWN BELOW.  
DRAWINGS SHALL BE READ IN CONJUNCTION WITH THE FOLLOWING BEFORE  
WORK COMMENCES:  
• THE CDM DESIGN ISSUES REGISTER  
• THE BDP RISK SERIES OF DRAWINGS  
• THE PROJECT CDM RISK REGISTER

NOTES

— Site boundary

P05	Plot numbers added	SB	SB	14.10.21
P04	Stage 4 Issue	JK	SB	20.08.21
P03	Bus stop relocation added	JK	SB	29.07.21
P02	General Revision	MD	SB	22.06.21
P01	Stage 3 Issue	MD	SB	14.05.21



**BDP.**

1 Edmund Gardens  
121 Edmund Street  
Birmingham  
B3 2HB  
United Kingdom  
T +44 (0)121 212 3553  
www.bdp.com

PROJECT TITLE Brentford Block D	
P3001873	
DRAWING TITLE Proposed Site Plan	SCALE @ A1 1 : 200
DATE FIRST ISSUED 09/03/21	REVISION P05
BBD-BDP-ZZ-XX-DR-A-00003	



Level	Unit No.	Notes	Postal Address	Retail Unit		Shop Front	
				m <sup>2</sup>	ft <sup>2</sup>	Area of Glazing	m <sup>2</sup>

L00	Ground Floor						
	SU 01	Shop Unit	115 High Street TW8 8AF	50 m <sup>2</sup>	538 ft <sup>2</sup>		26 m <sup>2</sup>
	SU 02	Shop Unit	114 High Street TW8 8AF	47 m <sup>2</sup>	506 ft <sup>2</sup>		15 m <sup>2</sup>
	SU 03	Shop Unit	113 High Street TW8 8AF	203 m <sup>2</sup>	2 185 ft <sup>2</sup>		20 m <sup>2</sup>
	SU 04	Shop Unit	112 High Street TW8 8AF	158 m <sup>2</sup>	1 701 ft <sup>2</sup>		20 m <sup>2</sup>
	SU 05	Shop Unit	111 High Street TW8 8AF	48 m <sup>2</sup>	517 ft <sup>2</sup>		15 m <sup>2</sup>
	SU 06	Shop Unit	110 High Street TW8 8AF	57 m <sup>2</sup>	614 ft <sup>2</sup>		33 m <sup>2</sup>
	SU 07	Shop Unit	3 Catherine Wheel Yard TW8 8AJ	49 m <sup>2</sup>	527 ft <sup>2</sup>		8 m <sup>2</sup>
	SU 08	Shop Unit	16 East Bradbury Yard TW8 8AN	120 m <sup>2</sup>	1 292 ft <sup>2</sup>		42 m <sup>2</sup>
	SU 09	Shop Unit	12 East Bradbury Yard TW8 8AN	47 m <sup>2</sup>	506 ft <sup>2</sup>		4 m <sup>2</sup>
	SU 10	Shop Unit	10 East Bradbury Yard TW8 8AN	75 m <sup>2</sup>	807 ft <sup>2</sup>		10 m <sup>2</sup>
	SU 11	Shop Unit	6 East Bradbury Yard TW8 8AN	35 m <sup>2</sup>	377 ft <sup>2</sup>		9 m <sup>2</sup>
	SU 12	Shop Unit	4 East Bradbury Yard TW8 8AN	136 m <sup>2</sup>	1 464 ft <sup>2</sup>		31 m <sup>2</sup>
0.95	L00 Subtotals GLA Contingency			1 025 m <sup>2</sup>	11 033 ft <sup>2</sup>		232 m <sup>2</sup>

Grand Totals N/A			
Total GLA with 5% Contingency <sup>1</sup>			
		974 m <sup>2</sup>	10 604 ft <sup>2</sup>

Notes:

1 5% contingency shown for Gross Lettable Area [GLA]

Unit. No	Plot	Postal Address	Postcode	Floor	Type	Apartment Type	No. of Bedrooms	No. of People	Wheelchair accessible (WA)	Std 20	SPG 4.1			SPG 4.10			SPG 5.2		Storage Space		
										Min. reqd cycle storage provision	GIA Current	Min. reqd GIA Area/ m <sup>2</sup>	Deviation from SPG reqmt/ m <sup>2</sup>	Private Open Space (POS)/ m <sup>2</sup>	Min. reqd POS/ m <sup>2</sup>	Deviation from SPG reqmt/ m <sup>2</sup>	Single or Double Aspect (S or D)		Standard	Actual	Difference
N01-01-01	1	Apartment 1, Tintern House, 2 East Bradbury Yard	TW8 8AU	1	2B4P	Type 8	2	4			78	70		10	7		D		2	4.9	2.9
N01-01-02	2	Apartment 2, Tintern House, 2 East Bradbury Yard	TW8 8AU	1	3B6P	Type 9	3	6			95	95		9	9		D		2.5	4.3	1.8
N01-01-03	3	Apartment 3, Tintern House, 2 East Bradbury Yard	TW8 8AU	1	4B6P	Type 10	4	6			99	99		16	9		D		3	5.1	2.1
N01-02-01	4	Apartment 4, Tintern House, 2 East Bradbury Yard	TW8 8AU	2	2B4P	Type 8	2	4			78	70		7	7		D		2	4.9	2.9
N01-02-02	5	Apartment 5, Tintern House, 2 East Bradbury Yard	TW8 8AU	2	3B6P	Type 9	3	6			95	95		9	9		D		2.5	4.3	1.8
N01-02-03	6	Apartment 6, Tintern House, 2 East Bradbury Yard	TW8 8AU	2	4B6P	Type 10	4	6			99	99		13	9		D		3	5.1	2.1
N01-03-01	7	Apartment 7, Tintern House, 2 East Bradbury Yard	TW8 8AU	3	2B4P	Type 8	2	4			78	70		7	7		D		2	4.9	2.9
N01-03-02	8	Apartment 8, Tintern House, 2 East Bradbury Yard	TW8 8AU	3	3B6P	Type 9	3	6			95	95		9	9		D		2.5	4.3	1.8
N01-03-03	9	Apartment 9, Tintern House, 2 East Bradbury Yard	TW8 8AU	3	4B6P	Type 10	4	6			99	99		13	9		D		3	5.1	2.1
N01-04-01	10	Apartment 10, Tintern House, 2 East Bradbury Yard	TW8 8AU	4	2B4P	Type 8	2	4			78	70		7	7		D		2	4.9	2.9
N01-04-02	11	Apartment 11, Tintern House, 2 East Bradbury Yard	TW8 8AU	4	3B6P	Type 9	3	6			95	95		9	9		D		2.5	4.3	1.8
N01-04-03	12	Apartment 12, Tintern House, 2 East Bradbury Yard	TW8 8AU	4	4B6P	Type 10	4	6			99	99		13	9		D		3	5.1	2.1
N01-05-01	13	Apartment 13, Tintern House, 2 East Bradbury Yard	TW8 8AU	5	4B6P	Type 13	4	6			120	99		32	9		D		3	4.7	
N01-05-02	14	Apartment 14, Tintern House, 2 East Bradbury Yard	TW8 8AU	5	3B5P	Type 14	3	5			94	86		32	8		D		2.5	3.1	
							43														
N02-01-01	15	Apartment 15, Tintern House, 1 Catherine Wheel Yard	TW8 8AU	1	4B6P	Type 10 (flipped)	4	6			99	99		16	9		D	SOUTH EAST	3	5.1	2.1
N02-01-02	16	Apartment 16, Tintern House, 1 Catherine Wheel Yard	TW8 8AU	1	3B5P	Type 11	3	5			86	86		8	8		D		2.5	3.8	1.3
N02-01-03	17	Apartment 17, Tintern House, 1 Catherine Wheel Yard	TW8 8AU	1	1B2P	Type 2b	1	2			50	50		8	5		S		1.5	2.5	1.0
N02-01-04	18	Apartment 18, Tintern House, 1 Catherine Wheel Yard	TW8 8AU	1	2B4P	Type 12	2	4			70	70		8	7		D		2	4.1	2.1
N02-02-01	19	Apartment 19, Tintern House, 1 Catherine Wheel Yard	TW8 8AU	2	4B6P	Type 10 (flipped)	4	6			99	99		13	9		D	SOUTH EAST	3	5.1	2.1
N02-02-02	20	Apartment 20, Tintern House, 1 Catherine Wheel Yard	TW8 8AU	2	3B5P	Type 11	3	5			86	86		8	8		D		2.5	3.8	1.3
N02-02-03	21	Apartment 21, Tintern House, 1 Catherine Wheel Yard	TW8 8AU	2	1B2P	Type 2b	1	2			50	50		8	5		S		1.5	2.5	
N02-02-04	22	Apartment 22, Tintern House, 1 Catherine Wheel Yard	TW8 8AU	2	2B4P	Type 12	2	4			70	70		8	7		D		2	4.1	
N02-03-01	23	Apartment 23, Tintern House, 1 Catherine Wheel Yard	TW8 8AU	3	4B6P	Type 10 (flipped)	4	6			99	99		13	9		D	SOUTH EAST	3	5.1	
N02-03-02	24	Apartment 24, Tintern House, 1 Catherine Wheel Yard	TW8 8AU	3	3B5P	Type 11	3	5			86	86		8	8		D		2.5	3.8	
N02-03-03	25	Apartment 25, Tintern House, 1 Catherine Wheel Yard	TW8 8AU	3	1B2P	Type 2b	1	2			50	50		8	5		S		1.5	2.5	
N02-03-04	26	Apartment 26, Tintern House, 1 Catherine Wheel Yard	TW8 8AU	3	2B4P	Type 12	2	4			70	70		8	7		D		2	4.1	
N02-04-01	27	Apartment 27, Tintern House, 1 Catherine Wheel Yard	TW8 8AU	4	4B6P	Type 10 (flipped)	4	6			99	99		13	9		D	SOUTH EAST	3	5.1	
N02-04-02	28	Apartment 28, Tintern House, 1 Catherine Wheel Yard	TW8 8AU	4	3B5P	Type 11	3	5			86	86		8	8		D		2.5	3.8	
N02-04-03	29	Apartment 29, Tintern House, 1 Catherine Wheel Yard	TW8 8AU	4	1B2P	Type 2b	1	2			50	50		8	5		S		1.5	2.5	
N02-04-04	30	Apartment 30, Tintern House, 1 Catherine Wheel Yard	TW8 8AU	4	2B4P	Type 12	2	4			70	70		8	7		D		2	4.1	
N02-05-01	31	Apartment 31, Tintern House, 1 Catherine Wheel Yard	TW8 8AU	5	3B4P	Type 15	3	4			81	74		11	7		D		2.5	3.4	
N02-05-02	32	Apartment 32, Tintern House, 1 Catherine Wheel Yard	TW8 8AU	5	2B4P	Type 16	2	4			83	70		9	7		D		2	3.8	
N02-05-03	33	Apartment 33, Tintern House, 1 Catherine Wheel Yard	TW8 8AU	5	2B4P	Type 17	2	4			85	70		33	7		D		2	3.8	
							47			34											
E01-01-01	1	Apartment 1, Sonnet House, 5 Catherine Wheel Yard	TW8 8AW	1	2B4P	Type 5	2	4		2	75	70		8	7		D		2	3.3	
E01-01-02	2	Apartment 2, Sonnet House, 5 Catherine Wheel Yard	TW8 8AW	1	3B4P	WA Type 2	3	4	WA	2	93	74		9	7		D		2.5	3.3	
E01-02-01	3	Apartment 3, Sonnet House, 5 Catherine Wheel Yard	TW8 8AW	2	2B4P	Type 5	2	4		2	75	70		9	7		D		2	3.3	
E01-02-02	4	Apartment 4, Sonnet House, 5 Catherine Wheel Yard	TW8 8AW	2	3B5P	WA Type 3	3	5	WA	2	100	86		9	8		D		2.5	6.5	
E01-03-01	5	Apartment 5, Sonnet House, 5 Catherine Wheel Yard	TW8 8AW	3	2B4P	Type 5	2	4		2	75	70		9	7		D		2	3.3	
E01-03-02	6	Apartment 6, Sonnet House, 5 Catherine Wheel Yard	TW8 8AW	3	3B5P	WA Type 3	3	5	WA	2	100	86		9	8		D		2.5	4.0	
E01-04-01	7	Apartment 7, Sonnet House, 5 Catherine Wheel Yard	TW8 8AW	4	2B4P	Type 5	2	4		2	75	70		9	7		D		2	3.3	
E01-04-02	8	Apartment 8, Sonnet House, 5 Catherine Wheel Yard	TW8 8AW	4	3B6P	Type 6	3	6		2	100	95		9	9		D		2.5	6.5	
E01-05-01	9	Apartment 9, Sonnet House, 5 Catherine Wheel Yard	TW8 8AW	5	2B4P	Type 5	2	4		2	75	70		9	7		D		2	3.3	
E01-05-02	10	Apartment 10, Sonnet House, 5 Catherine Wheel Yard	TW8 8AW	5	3B6P	Type 6	3	6		2	100	95		9	9		D		2.5	4.0	
E01-06-01 D	11	Apartment 11, Sonnet House, 5 Catherine Wheel Yard	TW8 8AW	6	2B4P	D Type 5	2	4		2	96	83		16	7		D		2	4.6	
E01-06-02 D	12	Apartment 12, Sonnet House, 5 Catherine Wheel Yard	TW8 8AW	6	2B4P	D Type 6	2	4		2	85	83		18	7		D		2	6.0	
E01-06-03 D	13	Apartment 13, Sonnet House, 5 Catherine Wheel Yard	TW8 8AW	6	2B4P	D Type 7	2	4		2	88	83		38	7		D		2	7.8	
E01-06-04 D	14	Apartment 14, Sonnet House, 5 Catherine Wheel Yard	TW8 8AW	6	2B4P	D Type 8	2	4		2	83	83		35	7		D		2	4.5	
							33			28											
E02-01-01	15	Apartment 15, Sonnet House, 7 Catherine Wheel Yard	TW8 8AW	1	3B4P	WA Type 2	3	4	WA	2	93	74		10	7	3	D		2.5	3.3	
E02-01-02	16	Apartment 16, Sonnet House, 7 Catherine Wheel Yard	TW8 8AW	1	3B5P	WA Type 4	3	5	WA	2	99	86		15	8	7	D		2.5	4.0	
E02-02-01	17	Apartment 17, Sonnet House, 7 Catherine Wheel Yard	TW8 8AW	2	3B5P	WA Type 3	3	5	WA	2	100	86		9	8	1	D		2.5	6.5	
E02-02-02	18	Apartment 18, Sonnet House, 7 Catherine Wheel Yard	TW8 8AW	2	3B5P	WA Type 4	3	5	WA		99	86		6	8		D		2.5	3.9	1.4
E02-03-01	19	Apartment 19, Sonnet House, 7 Catherine Wheel Yard	TW8 8AW	3	3B5P	WA Type 3	3	5	WA	2	100	86	14	9	8	1	D		2.5	6.5	4.0
E02-03-02</																					



# Traffic Management Order

2009 No.37

The London Borough of Hounslow (The Butts) (Parking Places) (No.22) Order 2009

Made on 15 June 2009

Coming into operation on 22 June 2009

## ARRANGEMENT OF ARTICLES

### PART I - PRELIMINARY Article

Citation and commencement 1

Revocations 2

Interpretation 3

### PART II - DESIGNATION OF PARKING PLACES Article

Designation of parking places 4

Number and situation of parking bays and parking spaces 5

Manner of standing in a parking place 6

Vehicles for which parking places are designated 7

Display of permits and tickets 8

Charge for parking places 9

Payment of the charge at parking places with ticket machines 10

Exemption from charges 11

Contravention 12

Movement of a vehicle in a parking place in an emergency 13

### PART III - SUPPLEMENTARY PROVISIONS

#### Section 1 – General Article

Period for which a vehicle may be left after the penalty charge  
has been incurred 14

Restriction on the removal of permits, tickets and notices	15
Indications by ticket machine and tickets	16
Indications by ticket machine and tickets as evidence	17
Indications and evidence by the telephone payment parking system	18
No tickets to be displayed other than those obtained on payment of the parking charge	19
Interval before a vehicle may again be left in a parking place	20
Power to suspend the use of a parking place	21
Restriction on the use of a parking place	22
Restriction on waiting by a vehicle in a parking place	23
Manner of waiting in a parking place	24
Installation of ticket parking meters, placing of traffic signs, etc	25

## **Section 2 - Permits**

Application for and issue of residents' permits for the use of parking places	26
Refund of charge paid in respect of residents' permit	27
Application for and issue of business permits for the use of parking places	28
Refund of charge in respect of business permits	29
Surrender, withdrawal and validity of permits	30
Application for and issue of duplicate permits	31
Form of permits	32

## **Section 3 - Residents' Visitor Parking Cards**

Application for and issue of residents' visitor parking cards for the use of parking places	33
Refund of charge paid in respect of a residents' visitor parking card	34
Surrender, withdrawal and validity of residents' visitor parking card	35
Application for the issue of replacement residents' visitor parking cards	36
Form of residents' visitor parking cards	37

## **SCHEDULES**

Schedule 1 - Pay & Display parking places

Schedule 2 - Pay & Display and Business Permit parking places

Schedule 3 - Pay & Display, Resident Permit and Residents' Visitor Parking Card parking places

Schedule 4 - Pay & Display, Business Permit, Resident Permit and Residents' Visitor Parking Card parking places

Schedule 5 - Business Permit parking places

Schedule 6 - Business Permit, Resident Permit and Residents' Visitor Parking Card parking places

Schedule 7 - Resident Permit and Residents' Visitor Parking Card parking places

Schedule 8 - Resident Permit parking places

Schedule 9 - Streets or parts of streets for the purpose of the definition of business user

Schedule 10 - Streets or parts of streets for the purpose of the definition of resident

Schedule 11 – On-Street Pay & Display parking charges

Schedule 12 - Business Permit charges

Schedule 13 - Resident Permit charges

The Council of the London Borough of Hounslow, having consulted the Commissioner of Police of the Metropolis, in exercise of the powers conferred by sections 45, 46, 49 and 51 and 124 of and Part III and Part IV of Schedule 9 to the Road Traffic Regulation Act 1984<sup>a</sup> as amended and the Traffic Management 2004<sup>b</sup> and of all other enabling powers hereby make the following Order:

---

<sup>a</sup> 1984 c.27

<sup>b</sup> 2004 c.18

## **PART I - PRELIMINARY**

### **1. Citation and Commencement**

- (1) This Order may be cited as The London Borough of Hounslow (The Butts) (Parking Places) (No.22) Order 2009 and shall come into operation for all purposes on 22 June 2009.

### **2. Revocation**

- (1) Without prejudice to the validity of anything done or to any liability incurred in respect of any act or omission before the coming into operation of this Order the following Orders are hereby revoked:
  - (a) The London Borough of Hounslow (Parking Places) (No. 2) Order 2000

### **3. Interpretation**

- (1) In this Order, except where the context otherwise requires, the following expressions have the meanings hereby respectively assigned to them:

"business permit" means a business permit issued under the provisions of Article 27;

"business user" means a person who occupies premises the postal address of which is in any street or part of street described in Schedule 9 and who uses such premises for non-residential purposes;

"civil enforcement officer" has the same meaning as in the Traffic Management Act 2004;

"Council" means the Council of the London Borough of Hounslow;

"disabled person" and "disabled person's badge" have the same meanings as in the Disabled Persons (Badges for Motor Vehicles) (England) Regulations 2000<sup>a</sup>;

"disabled person's vehicle" has the same meaning as in the Local Authorities' Traffic Orders (Exemptions for Disabled Persons) (England and Wales) Regulations 2000<sup>b</sup>;

"driver" in relation to a vehicle waiting in a parking place means the person driving the vehicle at the time it was left in the parking place;

"enactment" means any enactment, whether public, general or local, and includes any order, byelaw, rule, regulation, scheme or other instrument having effect by virtue of an enactment;

"goods" means goods of any kind whether animate or inanimate and includes postal packets of any description; and "delivering" and "collecting" in relation to any goods includes checking the goods for the purpose of their delivery or collection;

"goods carrying vehicle" means a motor vehicle constructed or adapted for use for the carriage of goods or burden of any description and not drawing a trailer;

---

<sup>a</sup> SI.2000/882

<sup>b</sup> SI.2000/683



“hand-held device” means a wireless hand-held computer used by a civil enforcement officer, which is programmed to interface with the telephone payment parking systems;

"householder" means either one person living alone or a group of people (who may or may not be related) living or staying at the same address with common housekeeping and who is a resident for the purposes of this Order;

“location identification number” means the unique number assigned to the parking place where the telephone payment parking system is operational;

“motor cycle and invalid carriage” have the same meaning respectively as in Section 136 of the Road Traffic Regulation Act 1984;

"owner", has the same meaning as in the Civil Enforcement of Parking Contraventions (England) General Regulations 2007<sup>a</sup>;

“parking contravention” has the meaning as assigned to it in Part 1 of Schedule 7 of the Traffic Management Act 2004;

"parking place" means any area on a highway designated as such by this Order;

"parking space" means a space in a parking place referred to in Schedules 1, 2, 3, 4, 5, 6, 7 and 8 which is provided for the leaving of vehicles;

"passenger vehicle" means a motor vehicle (other than a motor cycle or invalid carriage) constructed or adapted solely for the carriage of not more than eight passengers (exclusive of the driver) and their effects and not drawing a trailer;

“penalty charge” has the same meaning as in the Civil Enforcement of Parking Contraventions (England) General Regulations 2007

“penalty charge and reduced penalty charge” means a charge set by the Council under the provisions of Part 6 of the Traffic Management 2004 and with the approval of the Secretary of State for Transport which is to be paid to the Council within 28 days beginning on the date of the Notice, or in 14 days in the case of a reduced penalty charge, following the issue of the penalty charge notice;

“penalty charge notice” has the same meaning as in the Civil Enforcement of Parking Contraventions (England) General Regulations 2007;

"permitted hours", in relation to a parking place, means the period specified at the beginning of the Schedule relating to that parking place;

“protective cover” means the protective cover issued by the Council under the provisions of Article 25 or Article 27 of this Order;

“resident” means a person whose usual place of abode is at the premises the postal address of which is in any street or part of a street described in Schedule 10;

“residents’ permit” means a residents’ permit issued under the provisions of Article 25;

---

<sup>a</sup> SI.2007/3483

“residents’ permit holder” means a person to whom a residents’ permit has been issued under the provisions of Article 25;

“residents’ visitor parking card” means a residents’ visitor parking card issued under the provisions of Article 32;

“service provider” means the company authorised and appointed by the Council to operate, administer and maintain the payment of parking charges using the telephone payment parking system;

“service charge” means any charge which may be payable to the service provider (in addition to the parking charge in accordance with the provisions of Article 8) for vehicles using the telephone payment parking system;

“Schedule” means a Schedule to this Order;

“telecommunications system” has the same meaning as in the Telecommunications Act 1984<sup>a</sup>;

“telephone payment parking system” means a system to facilitate and monitor the payment of parking charges using telephone communication with the service provider in accordance with instructions indicated on signs located at each parking place where the system is operational;

“ticket” means a ticket issued by a ticket machine relating to a parking place.

“ticket machine” means a type of parking meter as defined in regulation 46(2) (a) (i) of the Road Traffic Regulation Act 1984 for the purposes of this Order being apparatus designed to indicate the time and to issue tickets indicating the payment of the charge referred to in Article 8 of this Order and the period in respect of which the charge has been paid;

“user”, in relation to a vehicle, means the person by whom such a vehicle is kept and used;

“valid residents’ visitor parking card” means a residents’ visitor parking card validated by entering the following indications by or on behalf of the driver:

- (a) the registration mark of the vehicle;
- (b) the month and the date in the month;
- (c) the time of arrival.

- (2) Any reference in this Order to any enactment shall be construed as a reference to that enactment as amended, applied, consolidated, re-enacted by or as having effect by virtue of any subsequent amendment.
- (3) For the purposes of this Order a vehicle shall be regarded as displaying a disabled person's badge in the relevant position when it is so regarded for the purposes of Regulation 3 of the Local Authorities' Traffic Orders (Exemptions for Disabled Persons) (England and Wales) Regulations 2000<sup>b</sup>.

---

<sup>a</sup> 1984 c.12

<sup>b</sup> SI 2000/683

## **PART II - DESIGNATION OF PARKING PLACES**

### **4. Designation of parking places**

- (1) The areas of highway as described in column 2 of Schedules 1, 2, 3, 4, 5, 6, 7 and 8 are designated as a parking places.
- (2) The limits of each parking place and the limits of each parking space within a parking place shall be indicated on the highway in accordance with the Traffic Signs Regulations and General Directions 2002<sup>a</sup>.

### **5. Number and situation of parking spaces**

- (1) The number of parking spaces in each parking place shall not be less than the number specified in relation to that parking place in column 3 of Schedules 1, 2, 3, 4, 5, 6, 7 and 8.
- (2) The number and situation of parking spaces in each parking place shall be determined by the Council.

### **6. Manner of standing in a parking place**

- (1) Every vehicle left in a parking place shall stand so that every part of the vehicle is wholly within the limits of any parking space or parking place.
- (2) Every vehicle left in a parking place in relation to which special provisions as to the manner of standing of a vehicle in that parking place is specified in column 5 of Schedules 2, 3, 4, 5, 6, 7 and 8 shall stand so that as to be in accordance with those provisions.

### **7. Vehicles for which parking places are designated**

- (1) Each parking place referred to in Schedules 1, 2, 3, 4, 5, 6, 7 and 8 may be used subject to the provisions of this Order for the leaving during the permitted hours of such vehicles as are passenger vehicles, goods carrying vehicles, motor cycles, or invalid carriages.
- (2) Subject to the provisions of this Order, a person leaving a vehicle in a parking place referred to in Schedule 1 during the permitted hours shall either:
  - (a) use the telephone payment parking system; or
  - (b) cause to be displayed a valid ticket.
- (3) Subject to the provisions of this Order, a person leaving a vehicle in a parking place referred to in Schedule 2 during the permitted hours shall either:
  - (a) make payment through the telephone payment parking system; or
  - (b) cause to be displayed a valid ticket; or
  - (c) cause to be displayed a valid business permit.
- (4) Subject to the provisions of this Order, a person leaving a vehicle in a parking place referred to in Schedule 3 during the permitted hours shall either:
  - (a) make payment through the telephone payment parking system; or
  - (b) cause to be displayed a valid ticket; or

---

<sup>a</sup> SI 2002/3113

- (c) cause to be displayed a valid residents' permit; or
  - (d) cause to be displayed a valid residents' visitors parking card.
- (5) Subject to the provisions of this Order, a person leaving a vehicle in a parking place referred to in Schedule 4 during the permitted hours shall either:
- (a) make payment through the telephone payment parking system; or
  - (b) cause to be displayed a valid ticket; or
  - (c) cause to be displayed a valid business permit; or
  - (d) cause to be displayed a valid residents' permit; or
  - (e) cause to be displayed a valid residents' visitors parking card.
- (6) Subject to the provisions of this Order, a person leaving a vehicle in a parking place referred to in Schedule 5 during the permitted hours shall cause to be displayed a valid business permit.
- (7) Subject to the provisions of this Order, a person leaving a vehicle in a parking place referred to in Schedule 6 during the permitted hours shall either:
- (a) cause to be displayed a valid business permit;
  - (b) cause to be displayed a valid residents' permit; or
  - (c) cause to be displayed a valid residents' visitors parking card
- (8) Subject to the provisions of this Order, a person leaving a vehicle in a parking place referred to in Schedule 7 during the permitted hours shall either:
- (a) cause to be displayed a valid residents' permit; or
  - (b) cause to be displayed a valid residents' visitors parking card
- (9) Subject to the provisions of this Order, a person leaving a vehicle in a parking place referred to in Schedule 8 during the permitted hours shall cause to be displayed a valid residents' permit.

## **8. Display of permits and tickets**

- (1) At all times during which a vehicle is left in a parking place during the permitted hours and where required to do so by Article 6, the driver shall cause either a valid ticket, a valid permit, or a valid residents' visitor parking card, issued for that vehicle, to be displayed on the front or kerb side of the vehicle so that either:
- (a) all the details on the side of the ticket which bears the indication that the parking charge has been paid are clearly visible from the front or kerb side of the vehicle; or
  - (b) all of the particulars of the residents' permit referred to in Article 28(1) are clearly visible from the front or kerb side of the vehicle; or
  - (c) all of the particulars of the business permit referred to in Article 28(2) are clearly visible from the front or kerb side of the vehicle; or
  - (d) all of the particulars of the visitor parking card referred to in Article 34(1) are clearly visible from the front or kerb side of the vehicle and have been duly completed.

## **9. Charge for use of parking places**

- (1) A charge shall be paid for the leaving of a vehicle in a parking place described in Schedule 1 during the permitted hours, such charge being as specified in Schedule 11.

- (2) A charge shall be paid for the leaving of a vehicle in a parking place described in Schedules 2, 3 and 4 during the permitted hours, such charge being either:
  - (a) as specified in Schedule 11; or
  - (b) a business permit fee as specified in Schedule 12; or
  - (c) a residents' permit fee as specified in Schedule 13; or
  - (d) a residents' visitors parking card fee as specified in Schedule 14.
- (3) A charge shall be paid for the leaving of a vehicle in a parking place described in Schedules 5, 6 7 and 8 during the permitted hours, such charge being either:
  - (a) a business permit fee as specified in Schedule 12; or
  - (b) a residents' permit fee as specified in Schedule 13; or
  - (c) a residents' visitors parking card fee as specified in Schedule 14.
- (4) For users of the telephone payment system the parking charge will be the same as specified in Schedule 11 plus the payment of an additional twenty (20) pence convenience fee.
- (5) No period for a vehicle left in a parking place referred to in Schedule 1, 2, 3 and 4 shall exceed the allocated time as stated in the permitted hours.

#### **10. Payment of parking charge at parking places with ticket machines**

- (1) A person leaving a vehicle in a parking place referred to in Schedules 1, 2, 3 and 4, can obtain a valid ticket by inserting the appropriate coins into the ticket machine, which shall be used as a means of collecting the parking charge imposed by this Order, and take such steps as may be necessary to cause the ticket machine to issue a ticket (such as press a button to confirm that they have paid the charge for the period they wish to park).
- (2) A person leaving a vehicle in a parking place referred to in Schedules 1, 2, 3 and 4, can use the telephone payment parking system to pay the parking charge, imposed by this Order, for the period they wish to park by making telephone communication with the service provider in accordance with instructions indicated on signs located at the parking place.
- (3) In the case of only one of the methods of payment, as mentioned in paragraphs (1) and (2) of this Article, being available, that method shall be used for the payment of the parking charge.

#### **11. Exemption from charges**

- (1) Notwithstanding the foregoing provisions of this Order any disabled person's vehicle displaying in the relevant position a disabled person's badge may be left in any part of a parking place if the use of that part has not been suspended.

#### **12. Contravention**

- (1) If a vehicle is left in a parking place at any time during the permitted hours without complying with the provisions of this Order, then a contravention of this Order and a parking contravention within Part 1 of Schedule 7 to the Traffic Management Act 2004, shall deemed to have occurred.

- (2) Where a vehicle is left in a parking place without complying with the provisions of this Order, the vehicle may be removed or caused to be removed from that parking place as provided for by Regulations made under section 99 of the Road Traffic Regulation Act 1984.

**13. Movement of a vehicle in a parking place in an emergency**

- (1) A police constable in uniform, a traffic warden or Civil Enforcement Officer may move or cause to be moved a vehicle from a parking place in an emergency.

**PART III - SUPPLEMENTARY PROVISIONS**

**Section 1 - General**

**14. Period a vehicle may be left after the penalty charge has been incurred**

- (1) The period for which a vehicle may be left in a parking place during the permitted hours after the penalty charge has been incurred shall not exceed one hour.

**15. Restriction on the removal of tickets and permits**

- (1) Where a ticket or permit has been displayed on a vehicle, no person, not being the driver of the vehicle, shall remove the ticket or permit from the vehicle unless authorised to do so by the driver.

**16. Indications by ticket machine and tickets**

- (1) Payment of the charge for a vehicle left in a parking place referred to in Schedules 1, 2, 3 and 4 shall be indicated by the issue by a ticket machine relating to that parking place of a ticket indicating a charge paid in respect of the period in accordance with Schedule 11, the day and date of issue, the expiry date and by the display of that ticket in the manner specified in Article 7(1)(b).
- (2) The expiry of the period for which payment was made by the charge for a vehicle left in a parking place referred to in Schedules 1, 2, 3 and 4 shall be indicated by the display on the vehicle in accordance with the provisions of Article 7(1)(b) of a ticket issued by a ticket machine relating to that parking place showing the day and date of issue, charge and expiry time of the charge, and the day so shown is not the day on which the vehicle is so left or the time shown on the clock on the said ticket machine is more than two minutes later than the time shown on the ticket.
- (3) The expiry of the period mentioned in Article 13 (being the period for which a vehicle may remain in a parking place after the penalty charge has been incurred) shall be indicated in the case of a vehicle left in a parking place referred to in Schedules 1, 2, 3 and 4 by the display on the vehicle in accordance with the provisions of Article 7(1)(b) a ticket issued by a ticket machine relating to that parking place showing the day and date of issue, charge and expiry time of the charge, and the day so shown is not the day on which the vehicle is so left or the time shown on the clock on the said ticket parking meter is more than one hour later than the time shown on the ticket.

## **17. Indications by ticket machine and tickets as evidence**

- (1) If at any time while a vehicle is left in a parking place referred to in Schedules 1, 2, 3 and 4 during the permitted hours no ticket issued by a ticket machine relating to that parking place is displayed on that vehicle in accordance with the provisions of Article 7(1)(b) it shall be presumed unless the contrary is proved that the charge has not been duly paid.
- (2) If at any time while a vehicle is left in a parking place referred to in Schedule 1, 2, 3 and 4 during the permitted hours the ticket issued by a ticket machine relating to that parking place and displayed on the vehicle in accordance with the provisions of Article 7(1)(b) and the clock on the ticket machine by which such ticket was issued give the indication mentioned in Article 15(2), it shall be presumed unless the contrary is proved that the charge has been duly paid in respect of that vehicle, and that the period for which payment was made by the charge has already expired.
- (3) If at any time while a vehicle is left in a parking place referred to in Schedules 1, 2, 3 and 4 during the permitted hours the ticket issued by a ticket machine relating to that parking place and displayed on the vehicle in accordance with the provisions of Article 7(1)(b) and the clock on the ticket machine by which such ticket was issued give the indication mentioned in Article 15(3), that indication shall in any proceedings for a parking contravention under the Traffic Management Act 2004:
  - (a) of leaving a vehicle in that parking place for longer than after the penalty charge has been incurred than the time authorised by Article 13, be evidence that it was so left; and
  - (b) of failing to pay the penalty charge, be evidence that the charge was incurred.
- (4) Any ticket issued by a ticket machine relating to a parking place referred to in Schedule 1, 2, 3 and 4 shall be presumed unless the contrary is proved to have been issued on the day shown thereon when the clock on the ticket parking meter by which such ticket was issued indicated the expiry time shown on the said ticket less the period.

## **18. Indications and evidence by the telephone payment parking system**

- (1) Where a vehicle has been left in a parking place referred to in Schedules 1, 2, 3 and 4 using the telephone payment parking system, an indication that payment has been made and the parking period for which payment has been made shall either:
  - a) appear on a hand-held device; or
  - b) be obtained by a civil enforcement officer contacting the service provider.
- (2) Without prejudice to the provisions of this Order, if at any time while a vehicle is left in a parking place referred to in the Schedule and no indication that payment of the parking charge has been made using the telephone payment parking system, or an indication that the parking period for which payment was made has expired, it shall be presumed, unless the contrary is proved, that either:
  - (a) the parking charge has not been duly paid in respect of that vehicle; or
  - (b) the parking period for which payment was made had already expired.

**19. No tickets to be displayed other than those obtained on payment of the parking charge**

- (1) No person shall display on a vehicle left in a parking place referred to in Schedule 1, 2, 3 and 4 during the permitted hours any ticket other than the ticket issued by the ticket machine relating to that parking place upon payment of the parking charge in respect of that vehicle.

**20. Interval before a vehicle may again be left in a parking place**

- (1) Without prejudice to the provisions of Article 18, no vehicle which has been taken away from a parking place during the permitted hours, after the charge has been incurred, shall until the expiration of one hour from the time it was taken away again be left in the parking place during the permitted hours.

**21. Power to suspend the use of a parking place**

- (1) A Civil Enforcement Officer duly authorised by the council or by the Commissioner of Police of the Metropolis may suspend the use of a parking place or any part thereof whenever he considers such suspension reasonably necessary:
- (a) for the purpose of facilitating the movement of traffic or promoting its safety;
  - (b) for the purpose of any building operation, demolition or excavation adjacent to the parking place, the maintenance, improvement or reconstruction of the highway or the cleansing of gullies in or adjacent to the parking place, the laying, erection, alteration or repair in or adjacent to the parking place of any sewer or of any main, pipe or apparatus for the supply of gas, water or electricity or any telecommunication system or the placing, maintenance or removal of any traffic sign;
  - (c) for the convenience of occupiers of premises adjacent to the parking place on any occasion of the removal of furniture to or from one office or dwelling house adjacent to the parking place from or to a depository, another office or dwelling house;
  - (d) on any occasion on which it is likely by reason some special attraction that any street will be thronged or obstructed; or
  - (e) for the convenience of occupiers of premises adjacent to the parking place at times of weddings or funerals, or on other special occasions.
- (2) A police constable in uniform or traffic warden may suspend for not longer than twenty four hours the use of a parking place or any part thereof whenever they consider suspension reasonably necessary for the purposes of facilitating the movement of traffic or promoting its safety.
- (3) A Civil Enforcement Officer, police constable or traffic warden suspending the use of a parking place or any part thereof in accordance with the provisions of paragraph (1), or as the case may be, paragraph (2) of this Article shall thereupon place or cause to be placed in or adjacent to any part of that parking place which is suspended a traffic sign of any size, colour and type prescribed or authorised under Section 64 of the Road Traffic Regulation Act 1984 indicating that waiting by vehicles is prohibited.
- (4) No person shall cause or permit a vehicle to wait in a parking place or part thereof during such period as there is in or adjacent to that part of the parking place a traffic sign placed



in pursuance of paragraph (3) of this Article. Provided that nothing in this paragraph shall apply to:

- (a) any vehicle being used for fire brigade, ambulance or police purposes or any vehicle which is waiting for any reason specified in Article 24(1) (b) to (c); or
- (b) anything done with the permission of the person suspending the use of the parking place or part thereof in pursuance of paragraph (1) of this Article.

## **22. Restriction on use of a parking place**

- (1) During the permitted hours no person shall use any parking place or any vehicle while it is in a parking place in connection with the sale or offering for sale of any goods to any person in or near the parking place or in connection with the selling or offering for sale of his skill in handicraft or his services in any other capacity. Provided that nothing in this Article shall prevent the sale of goods from a vehicle:
  - (a) if the goods are immediately delivered at or taken into premises adjacent to the vehicle from which the sale effected; or
  - (b) if the vehicle is one to which provisions of Article 19(1) (h) or (i) apply.

## **23. Restriction on waiting by a vehicle in a parking place**

- (1) Any vehicle may wait during the permitted hours anywhere in any part of a parking place if the use of that part has not been suspended and if the vehicle is waiting:
  - (a) for so long as is necessary to enable a person to board or alight from the vehicle and to load thereon or unload therefrom their personal luggage;
  - (b) for so long as is necessary to enable goods to be loaded onto the vehicle from premises adjacent to the parking place or unloaded from the vehicle to premises adjacent to the parking place;
  - (c) for so long as is necessary for postal packets to be collected from or delivered to premises or posting boxes adjacent to the parking place in which the vehicle is waiting;
  - (d) whilst being used for fire brigade, ambulance or police purposes or, not being a passenger vehicle, is being used in the service of a local authority in pursuance of statutory powers or duties provided that in all the circumstances it is reasonably necessary in the exercise of such powers or in the performance of such duties for the vehicle to wait in the place in which it is waiting;
  - (e) the vehicle is waiting only for so long as may be necessary to enable it to be used in connection with the removal of any obstruction to traffic;
  - (f) owing to the driver being prevented from proceeding by circumstances beyond his control or to such waiting being necessary in order to avoid an accident;
  - (g) the vehicle not being a passenger vehicle is waiting only for so long as may be reasonably necessary to enable it to be used for any purpose specified in Article 17(1) (b);
  - (h) the vehicle is in actual use in connection with the removal of furniture to or from one office or dwellinghouse adjacent to the parking place from or to a depository, another office or dwelling house; or
  - (i) the vehicle is waiting otherwise than in a parking bay or parking space if goods are being sold or offered or exposed for sale from the vehicle by a person who is licensed by the Council to sell goods from a stationary vehicle on a pitch situated in a parking space.

- (2) No charge specified in the foregoing provisions of this Order shall be payable in respect of any vehicle waiting in a parking place in accordance with the foregoing provisions of this Article.
- (3) Nothing in the foregoing provisions of this Order shall be taken as authorising anything which would be a contravention of any Regulations made or having effect as if made under Section 25 of the Road Traffic Regulation Act 1984.

#### **24. Manner of waiting in a parking place**

- (1) Every vehicle waiting in a parking place by virtue of the provisions of Article 19(1) (e), (f), (g), (h) or (i) shall stand so that every part of the vehicle is wholly within the limits of the parking place unless the width of the vehicle precludes compliance with this paragraph.
- (2) If the width of the vehicle does preclude compliance with paragraph (1) of this Article the vehicle waiting in the parking place shall stand so that the longitudinal axis of the vehicle is parallel to the edge of the carriageway and the distance between the said edge and the nearest wheel of the vehicle is not more than 300 millimetres.
- (3) Every vehicle left in a parking place in relation to which special provisions as to the manner of standing of a vehicle in that parking place is specified in column 5 of Schedules 1, 2, 3, 4, 5, 6, 7 and 8 shall stand so that as to be in accordance with those provisions.

#### **25. Installation of ticket machines, placing of signs etc**

- (1) The Council shall:
  - (a) install and maintain in proper working order at least one ticket machine relating to each parking place referred to in Schedule 1, 2, 3 and 4 to this Order; and
  - (b) cause the limits of each parking place and of each parking space to be indicated on the carriageway by placing and maintaining thereon traffic signs (road markings) of any size, colour and type prescribed or authorised under Section 64 of the Road Traffic Regulation Act 1984; and
  - (c) place and maintain in or in the vicinity of each parking place traffic signs of any size, colour and type prescribed by or authorised under the Road Traffic Regulation Act 1984; and
  - (d) carry out such other work as is reasonably required for the purpose of the satisfactory operation of a parking place.

### **Section 2 - Residents' Permits**

#### **26. Application for and issue of residents' permits for the use of parking places**

- (1) Any resident who is the user of a vehicle of the following class, that is to say a passenger vehicle, a goods vehicle the overall height of which does not exceed 2.28 metres and the overall length of which does not exceed 5.25 metres, a motor cycle or an invalid carriage, may apply to the Council for the issue of a residents' permit in respect of that vehicle and any such application shall be made on a form issued by and obtainable from the Council and shall include the particulars and information required by such form to be supplied.
- (2) The Council may at any time require an applicant for a residents' permit or a residents' permit holder to produce to an officer of the Council such evidence in respect of an

application for a residents' permit made to them as they may reasonably call for to verify any particulars of information given to them or in respect of any residents' permit issued by them as they may reasonably call for to verify that the residents' permit is valid.

- (3) In receipt of an application duly made under the foregoing provisions of this Article and upon receipt of the charge specified in Schedule 13, the Council, upon being satisfied that the applicant is a resident and is the user of a vehicle of the class specified in paragraph (1) of this Article, shall issue to the applicant therefor:
  - (a) one residents' permit for the leaving during the permitted hours in a parking place referred to in Schedules 3, 4, 6, 7 and 8 of the vehicle to which such residents' permit relates by the owner of such vehicle or by any person using such with the consent of the owner other than a person to whom such vehicle has been let for hire or reward. Provided that, subject to the provisions of Article 23, the Council shall not issue a residents' permit to any resident which would be valid during any period during Which any other residents' permit issued to that resident is or would be valid; and
  - (b) one protective cover for the display therein of a residents' permit.
- (4) Subject to the provisions of this Order a residents' permit shall be valid for a period of six, twelve or twenty-four months running from the beginning of the month in which the residents' permit first became valid.

## **27. Refund of charge paid in respect of a residents' permit**

- (1) A residents' permit holder who surrenders a residents' permit to the Council before it becomes valid shall be entitled to a refund of the charge paid in respect thereof.
- (2) A residents' permit holder who surrenders a residents' permit to the Council after it has become valid shall be entitled to a refund of a part of the charge paid. The refund will be paid pro rata for any complete months which remain unexpired at the time when the residents' permit is surrendered to the Council.

## **28. Application for and issue of business permits for the use of parking places**

- (1) Any business user who is the owner of a vehicle of the following class, that is to say a passenger vehicle, a goods carrying vehicle the overall height of which does not exceed 2.50 metres and the overall length of which does not exceed 5.25 metres or a motor cycle may apply to the Council for the issue of a business permit in respect of that vehicle and any such application shall be made on a form issued by and obtainable from the Council and shall include the particulars and information required by such form to be supplied.
- (2) The Council may at any time require an applicant for a business permit or a business permit holder to produce to an officer of the Council such evidence in respect of an application for a business permit made to them as they may reasonably call for to verify any particulars or information given to them or in respect of any business permit issued by them as they may reasonably call for to verify that the business permit is valid.
- (3) Upon receipt of an application duly made under the foregoing provisions of this Article and upon receipt of the charge specified in Schedule 12 of this Article, the Council upon being satisfied that the applicant is a business user is the owner of a vehicle of the class specified in paragraph (1) of this Article, shall issue to the applicant therefor:

- (a) one business permit for the leaving during the permitted hours in a parking space in any parking place referred to in Schedule 2, 4, 5 and 6 to this Order of the vehicle to which such business permit relates by the owner of such vehicle or by any person using such vehicle with the consent of the owner other than a person to whom such vehicle has been let for hire or reward;
  - (b) one protective cover for the display therein of the business permit.
- (4) Subject to the provisions of this Order a business permit shall be valid for a period of twelve months running from the date on which the business permit first becomes valid.

**29. Refund of charge paid in respect of business permits**

- (1) A business permit holder who surrenders a business permit to the Council before it becomes valid shall be entitled to a refund of the charge paid in respect thereof.
- (2) A business permit holder who surrenders a business permit to the Council after it has become valid shall be entitled to a refund of the charge paid. The refund will be paid pro rata for any complete months which remain unexpired at the time when the residents' permit is surrendered to the Council.
- (4) The Council may at its absolute discretion limit the number of business permits that are issued at any one time in respect of businesses.

**30. Surrender, withdrawal and validity of permits**

- (1) A permit holder may surrender a permit to the Council at any time and shall surrender a permit to the Council on the occurrence of any one of the events set out in paragraph (3) of this Article or in accordance with the provisions of paragraph (5) of this Article.
- (2) The Council may, by notice in writing served on the permit holder by sending the same by recorded delivery service to the residents' permit holder at the address shown by that person on the application for the permit or at any other address believed to be that person's place of abode, withdraw a residents' permit if it appears to the Council that any one of the events set out in paragraph (3)(a), (b) or (d) of this Article has occurred and the residents' permit holder shall surrender the residents' permit to the Council within 48 hours of the receipt of the afore-mentioned notice.
- (3) The events referred to in the foregoing provisions of this Article are:
  - (a) the permit holder ceasing to be a resident or a business user;
  - (b) the permit holder ceasing to be the owner of the vehicle in respect of which the permit was issued;
  - (c) the withdrawal of such permit by the Council under the provisions of paragraph (2) of this Article;
  - (d) the vehicle in respect of which such permit was issued being adapted or used in such a manner that it is not a vehicle of the class specified in respect of the parking place;
  - (e) the issue of the duplicate permit by the Council under the provisions of Article 27;
  - (f) the permit ceasing to be valid pursuant to the provisions of paragraph (4) of this Article.

- (4) Without prejudice to the foregoing provisions of this Article, a permit shall cease to be valid at the expiration of the period specified thereon or the occurrence of any one of the events set out in paragraph (3) (a), (b), (c), (d), (e) or (f) of this Article, whichever is the earlier.
- (5) Where a permit is issued to any person upon receipt of a cheque and the cheque is subsequently dishonoured, the permit shall cease to be of any effect and the Council shall by notice in writing served on the person to whom the permit was issued by sending the same by recorded delivery service to him at the address shown by that person on the application for the permit or any other address believed to be that person's place of abode, require that person to surrender the permit to the Council within 48 hours of the receipt of the afore-mentioned notice.

### **31. Application for and issue of a duplicate permit**

- (1) If a permit is mutilated or accidentally defaced or the figures or particulars thereon have become illegible or the colour of the permit has become altered by fading or otherwise, the permit holder shall either surrender it to the Council or apply to the Council for the issue to him of a duplicate permit and the Council upon the receipt of the permit, shall issue a duplicate permit so marked and upon such issue the permit shall become valid.
- (2) If a permit is lost or destroyed, the permit holder may apply to the Council for the issue to him of a duplicate permit and the Council, upon being satisfied as to the loss or destruction, shall issue a duplicate permit so marked and upon such issue the permit shall become valid.
- (3) The provisions of this Order shall apply to a duplicate permit and an application therefore as if it were a permit or, as the case may be, an application therefor.

### **32. Form of permit**

- (1) A residents' permit shall be in writing and shall include the following particulars:
  - (a) the registration mark of the vehicle in respect of which the permit is issued;
  - (b) the period during which, subject to the provisions of Article 22(4), the residents' permit shall remain valid;
  - (c) the hours during which the vehicle may be left in a parking place;
  - (d) an indication that the residents' permit has been issued by the Council; and
  - (e) an indication that the charge for the issue thereof has been paid to the Council.
- (2) A business permit shall be in writing and shall include the following particulars:
  - (a) the registration mark of the vehicle in respect of which the permit has been issued or the name of the company to which the permit has been issued;
  - (b) the period during which, subject to the provisions of Article 24(4), the business permit shall remain valid;
  - (c) the hours during which the vehicle may be left in a parking place;
  - (d) an indication that the business permit has been issued by the Council; and
  - (e) an indication that the charge for the issue thereof has been paid to the Council.

### **Section 3 - Residents' Visitor Parking Cards**

#### **33. Application for the issue of residents' visitor parking cards for the use of parking places**

- (1) Any householder may apply to the Council for the issue of up to ten residents' visitor parking cards for a vehicle of the class described in Article 22(1) and belonging to a person visiting that household and any such application shall be made on a form issued by and obtainable from the Council and shall include the particulars and information required by such form to be supplied.
- (2) The Council may at any time require an applicant for residents' visitor parking cards to produce to an officer of the Council such evidence in respect of an application for such a residents' visitor parking cards made to them as they may reasonably call for to verify any particulars or information given to them.
- (3) On receipt of an application duly made under the foregoing provisions of this Article and upon receipt of the charge specified in paragraph (4) of this Article, the Council upon being satisfied that the applicant is a householder, shall issue to the applicant thereof a maximum of ten residents' visitors parking cards in any 12 month period.
- (4) The charge referred to in paragraph (3) of this Article shall be fifteen pounds in respect of the supply of each residents' visitors parking card.

#### **34. Refund of charge paid in respect of a residents' visitor parking card**

- (1) A householder who surrenders a residents' visitor parking card to the Council before it becomes valid shall be entitled to a refund of the charge paid.

#### **35. Surrender, withdrawal and validity of a residents' visitor parking card**

- (1) A householder may surrender a residents' visitor parking card to the Council at any time and shall surrender a residents' visitor parking card to the Council on the occurrence of the event set out in paragraph (3) of this Article or in accordance with the provisions of paragraph (5) of this Article.
- (2) The Council may, by notice in writing served on the householder by sending the same by recorded delivery service to the householder at the address shown by that person on the application for the residents' visitor parking card or any other address believed to be that person's place of abode, withdraw a residents' visitor parking card if it appears to the Council that the event set out in paragraph (3)(a) of this Article has occurred and the householder shall surrender the residents' visitor parking card to the Council within 48 hours of the receipt of the afore-mentioned notice.
- (3) The events referred to in the foregoing provisions of this Article are:
  - (a) the householder ceasing to be a resident;
  - (b) the withdrawal of such a residents' visitor parking card by the Council under the provisions of paragraph (2) of this Article;
  - (c) the residents' visitor parking card ceasing to be valid pursuant to the provisions of paragraph (4) of this Article.

- (4) Without prejudice to the foregoing provisions of this Article, a residents' visitor parking card shall cease to be valid at the expiration of the period specified thereon or on the occurrence of any one of the events set out in paragraph (3) (a) or (b) of this Article, whichever is the earlier.
- (5) Where residents' visitor parking cards are issued to any person upon receipt of a cheque and the cheque is subsequently dishonoured, the residents' visitor parking cards shall cease to be of any effect and the Council shall by notice in writing served on the person to whom the residents' visitor parking cards were issued by sending the same by recorded delivery service to him at the address shown by that person on the application for the residents' visitor parking cards or at any other address believed to be that person's place of abode, require that person to surrender the residents' visitor parking cards to the Council within 48 hours of the receipt of the afore-mentioned notice.

**36. Application for and issue of replacement residents' visitor parking cards**

- (1) If a residents' visitor parking card is mutilated or accidentally defaced or the figures or particulars thereon have become illegible or the colour of the residents' visitor parking card has become altered by fading or otherwise, the householder shall either surrender it to the Council or apply to the Council for the issue of a replacement residents' visitor parking card and the Council, upon receipt of the residents' visitor parking card, shall issue a replacement residents' visitor parking card.
- (2) The provisions of this Order shall apply to a replacement residents' visitor parking card and an application therefor as if it were a residents' visitor parking card or, as the case may be, an application therefor.

**37. Form of residents' visitor parking card**

- (1) A residents' visitor parking card shall be in writing and shall include the following particulars:
- (a) the month;
  - (b) the date in the month;
  - (c) the time of arrival;
  - (d) the vehicle registration mark;
  - (e) the period during which, subject to the provisions of Article 29(3), the residents' visitor parking card may remain valid;
  - (f) the hours during which a vehicle may be left in a parking place, subject to the foregoing provisions of this Order;
  - (g) an indication that the residents' visitor parking card has been issued by the Council.

Dated this fifteenth day of June 2009.



Director of Environment

## SCHEDULE 1

Parking places in respect of which a vehicle may be left during the permitted hours if it displays a valid parking ticket from a ticket machine

No. of parking place	Designated parking place	Minimum number of parking bays	Minimum total length in metres not to be occupied by parking bays	Special manner of standing
1.	2.	3.	4.	5.
No items				



## SCHEDULE 2

Parking places in respect of which a vehicle may be left during the permitted hours if it displays a valid parking ticket from a ticket machine or a valid business permit.

No. of parking place	Designated parking place	Minimum number of parking bays	Minimum total length in metres not to be occupied by parking bays	Special manner of standing
1.	2.	3.	4.	5.

No items.

### SCHEDULE 3

In relation to a parking place referred to in this Schedule, the expression "permitted hours" means the period between 8.00am and 6.30pm on Mondays to Saturdays inclusive, any such day not being a Sunday or a public holiday.

Parking places in respect of which a vehicle may be left during the permitted hours if it displays a valid residents' permit, a valid residents' visitor parking card or a valid parking ticket from a ticket machine.

No. of parking place	Designated parking place	Minimum number of parking bays	Minimum total length in metres not to be occupied by parking bays	Special manner of standing
1.	2.	3.	4.	5.
1.	Church Walk (north), the north-east side, between a point 34.70 metres north-west of the party wall of Nos.25 and 26 Church Walk north-westwards for a distance of 35.00 metres.	1	-	-
2.	Somerset Road, the north-west side, between a point 4.40 metres north-east of the north-eastern wall of Nos.7 to 12 Cranbrook Court, Somerset Road south-westwards for a distance of 46.00 metres.	1	-	-
3.	Somerset Road, the south-east side, from a point 15.80 metres south-west of the south-western kerb-line of Boston Manor Road south-westwards for a distance of 41.00 metres.	1	-	-
4.	Willow Close, the south-east side, from a point 12.00 metres south-west of the south-western kerb-line south-westwards for a distance of 5.00 metres.	1.	-	Two wheels on the footway
5.	Willow Close, the south-east side, from a point 6.00 metres north-east of the north-eastern wall of No.1 Willow Close north-eastwards for a distance of 15.50 metres.	1	-	Two wheels on the footway

## SCHEDULE 4

In relation to a parking place referred to in this Schedule, the expression "permitted hours" means the period between 8.00am and 6.30pm on Mondays to Saturdays inclusive, any such day not being a Sunday or a public holiday.

Parking places in respect of which a vehicle may be left during the permitted hours if it displays a valid residents' permit, a valid residents' visitor parking card, a business parking permit or a valid parking ticket from a ticket machine.

No. of parking place	Designated parking place	Minimum number of parking bays	Minimum total length in metres not to be occupied by parking bays	Special manner of standing
1.	2.	3.	4.	5.
6.	Brent Road, the north-east side, between a point opposite the south-eastern boundary of No.23 The Butts and a point 3.00 metres south-east of the south-eastern kerb-line of the crossover to the garage of Lauren House, Brent Road.	1	-	-
7.	Brent Road, the north-east side, between a point opposite the south-eastern boundary of No.2 Brent Road and a point 3.50 metres north-west of a point opposite the party wall of Nos.2 and 4 Brent Road.	1	-	-
8.	Brent Road, the south-west side, between a point 7.30 metres north-west of a point opposite the north-western boundary of No.1 Brent Road and a point 4.00 metres north-west of a point opposite the north-western wall of Scott Lodge, No.5 Brent Road.	1	-	-
9.	Somerset Road, the north-west side, from a point 2.50 metres north-east of a point opposite the party wall of Nos. 17 and 19 Somerset Road south-westwards for a distance of 11.00 metres.	1	-	-
10.	Somerset Road, the south-east side, between a point 4.00 metres south-west of the south-western kerb-line of the south-western arm of Upper Butts and a point 5.40 metres north-east of the north-eastern kerb-line of Brent Road.	1	-	-

#### SCHEDULE 4 (Continued)

No. of parking place	Designated parking place	Minimum number of parking bays	Minimum total length in metres not to be occupied by parking bays	Special manner of standing
1.	2.	3.	4.	5.
11.	The Butts, the north-western arm, the north-west side, from a point 9.20 metres north-east of a point opposite the common boundary of Nos.1 and 3 The Butts south-westwards for a distance of 7.20 metres	1	-	at 90 degrees to the north-western kerbline
12.	The Butts, the north-western arm, the north-west side, from a point 5.60 metres south-west of a point opposite the north-eastern wall of No.5 The Butts south-westwards for a distance of 19.20 metres	1	-	at 90 degrees to the north-westernker bline
13.	The Butts, the north-western arm, the north-west side, from a point 5.50 metres south-west of a point opposite the south-western wall of No.7 The Butts south-westwards for a distance of 9.60 metres.	1	-	at 90 degrees to the north-western kerbline
14.	The Butts, the north-western arm, the north-west side, from a point 3.60 metres north-east of a point opposite the party wall of Nos.11 and 13 The Butts south-westwards for a distance of 7.20 metres.	1	-	at 90 degrees to the north western kerbline
15.	The Butts, the north-western arm, the north-west side, from a point 2.30 metres north-east of a point opposite the party wall of Nos.15 and 17 The Butts south-westwards for a distance of 4.80 metres.	1	-	at 90 degrees to the north-western kerbline
16.	The Butts, the north-western arm, the north-west side, from a point 850 millimetres north-east of a point opposite the party wall of Nos.17 and 17A (The Coach House) The Butts south-westwards for a distance of 4.80 metres.	1	-	at 90 degrees to the north-westernker bline
17.	The Butts, the north-western arm, the north-west side, the lay-by fronting Nos.19 to 23 The Butts.	1	-	-

#### SCHEDULE 4 (Continued)

No. of parking place	Designated parking place	Minimum number of parking bays	Minimum total length in metres not to be occupied by parking bays	Special manner of standing
1.	2.	3.	4.	5.
18.	The Butts, the north-western arm, the south-east side, the lay-by fronting St. Raphaels Home, The Butts and St. Mary's Convent, The Butts between its north-eastern extremity and a point 6.00 metres north-east of a point opposite the north-eastern wall of No.16 The Butts.	1	-	-
19.	The Butts, the north-western arm, the south-east side, the lay-by fronting Nos.16 to 24 The Butts between a point 2.40 metres south-west of a point opposite the north-eastern wall of No.16 The Butts and its south-western extremity measured at the south-eastern kerb-line.	1	-	-
20.	The Butts, the south-western arm, the north-east side, from a point 20.10 metres south-east of the south-eastern kerb-line of the north-western arm of The Butts south-eastwards for a distance of 5.30 metres.	1	-	at 90 degrees to the north-eastern kerblines
21.	The Butts, the south-western arm, the north-east side, from a point 4.80 metres north-west of a point opposite the north-western wall of No.28 The Butts south-eastwards for a distance of 6.30 metres.	1	-	at 90 degrees to the north-eastern kerblines
22.	The Butts, the south-western arm, the north-east side, from a point 3.00 metres north-west of a point opposite the party wall of Nos.28 and 30 The Butts south-eastwards for a distance of 5.50 metres.	1	-	at 90 degrees to the north-eastern kerblines
23.	The Butts, the south-western arm, the north-east side, from a point 1.00 metre south-east of a point opposite the party wall of Nos.30 and 32 The Butts south-eastwards for a distance of 7.20 metres.	1	-	at 90 degrees to the north-eastern kerblines

#### SCHEDULE 4 (Continued)

No. of parking place	Designated parking place	Minimum number of parking bays	Minimum total length in metres not to be occupied by parking bays	Special manner of standing
1.	2.	3.	4.	5.
24.	The Butts, the south-western arm, the south-west side, the lay-by opposite No.26 The Butts.	1	-	at 90 degrees to the south-western kerbline
25.	The Butts, the south-western arm, the area of carriageway consisting of three parking bays each having a width of 2.40 metres immediately adjacent to and extending 4.80 metres north-westwards from the north-western kerb-line of the island site opposite Nos. 38 and 38A The Butts between a point 0.26 metres south-west of the north-eastern kerb-line of the island site and a point 0.26 metres north-east of the south-western kerb-line of the island site.	1	-	at 90 degrees to the north western kerbline of the island site
26.	The Butts, the south-western arm, the area of carriageway consisting of two parking bays each having a width of 2.40 metres immediately adjacent to and extending 4.80 metres south-eastwards from the south-eastern kerb-line of the island site opposite Nos.38 and 38A The Butts from a point 0.26 metres south-west of the north-eastern kerb-line of the island site south-westwards for a distance of 4.80 metres.	1	-	parallel to the south-eastern kerbline of the island site
27.	The Butts, the south-western arm, the area of carriageway consisting of one parking bay having a width of 2.40 metres immediately adjacent to and extending 4.80 metres south-westwards from the south-eastern kerb-line of the island site opposite Nos. 38 and 38A The Butts from a point 0.26 metres north-east of the south-western kerb-line of the island site north-eastwards for a distance of 2.40 metres.	1	-	at 90 degrees to the south eastern kerbline of the island site

#### SCHEDULE 4 (Continued)

No. of parking place	Designated parking place	Minimum number of parking bays	Minimum total length in metres not to be occupied by parking bays	Special manner of standing
1.	2.	3.	4.	5.
28.	Upper Butts, the south-western arm, the south-west side, between a point 3.00 metres south-east of a point opposite the north-western boundary of No.19 The Butts and a point 9.70 metres north-west of a point opposite the north-westernmost wall of No.19 The Butts.	1	-	-
29.	Upper Butts, the south-western arm, the south-west side, between a point 3.25 metres north-west of the north-westernmost wall of No.19 The Butts and a point 4.80 metres north-west of a point opposite the south-eastern boundary of No.19 The Butts.	1	-	-

**SCHEDULE 5**

Parking places in respect of which a vehicle may be left during the permitted hours if it displays a valid business permit.

No. of parking place	Designated parking place	Minimum number of parking bays	Minimum total length in metres not to be occupied by parking bays	Special manner of standing
1.	2.	3.	4.	5.
No items.				



## SCHEDULE 6

Parking places in respect of which a vehicle may be left during the permitted hours if it displays a valid business permit or a valid residents' permit or a residents' visitor parking card.

No. of parking place	Designated parking place	Minimum number of parking bays	Minimum total length in metres not to be occupied by parking bays	Special manner of standing
1.	2.	3.	4.	5.

No items.

## SCHEDULE 7

In relation to a parking place referred to in this Schedule, the expression "permitted hours" means the period between 8.00am and 6.30pm on Mondays to Saturdays inclusive, any such day not being a Sunday or a public holiday.

Parking places in respect of which a vehicle may be left during the permitted hours if it displays a valid residents' permit or a valid residents' visitor parking card.

No. of parking place	Designated parking place	Minimum number of parking bays	Minimum total length in metres not to be occupied by parking bays	Special manner of standing
1.	2.	3.	4.	5.
30.	Boston Manor Road, the south-west side, from a point 3.80 metres south-east of the party wall of Nos.20 and 22 Boston Manor Road north-westwards for a distance of 10.00 metres.	1	-	-
31.	Boston Manor Road, the south-west side, from a point 3.00 metres south-east of the party wall of Nos.24 and 26 Boston Manor Road north-westwards for a distance of 9.50 metres.	1	-	-
32.	Brent Road, the south-west side, between a point opposite the south-eastern boundary of No.23 The Butts and a point 0.50 metres north-west of a point opposite the north-western boundary of No.1 Brent Road.	1	-	-
33.	Brentside, the south-west side, from a point opposite the south-eastern flank wall of Nos. 1 and 3 Brentside north-westwards for a distance of 30.00 metres.	1	-	-
34.	Brentside, the south-west side, from a point 40.00 metres north-west of the south-eastern flank wall of Nos.1 and 3 Brentside north-westwards for a distance of 16.00 metres.	1	-	-
35.	<del>Church Walk, Brentford, the southern arm, the north-east side, from a point 600 millimetres north-west of the party wall of Nos.7 and 8 Church Walk north-westwards for a distance of 41.00 metres.</del>	<del>1</del>	<del>-</del>	<del>-</del>

*Amended by 2013/32*

### SCHEDULE 7 (Continued)

No. of parking place	Designated parking place	Minimum number of parking bays	Minimum total length in metres not to be occupied by parking bays	Special manner of standing
1.	2.	3.	4.	5.
<del>36.</del> Description amended by 2010/39	Church Walk, Brentford, the southern arm, the north-east side, from a point 2.00 metres north-west of a point opposite the party wall of Nos.17 and 18 Church Walk north-westwards for a distance of 10.00 metres.	1	-	-
37.	Church Walk, Brentford, the northern arm, all that area of carriageway which lies south-east of the south-eastern boundary wall of No.23 Church Walk	1	-	-
38.	Church Walk, Brentford, the northern arm, the north-east side, from a point 300 millimetres south-east of the party wall of Nos.25 and 26 Church Walk north-westwards for a distance of 35.00 metres.	1	-	-
39.	Robin Grove, the north-west side, from a point 7.80 metres north-east of the party wall of No.23 and Nos.24/26 Robin Grove north-eastwards for a distance of 11.00 metres.	1	-	Two wheels on the footway
40.	Robin Grove, the north-west side, from a point 1.20 metres south-west of the north-eastern flank wall of No.28 Robin Grove north-eastwards for a distance of 5.00 metres.	1	-	Two wheels on the footway
41.	Robin Grove, the north-west side, from a point 1.20 metres north-east of the south-western flank wall of No.29 Robin Grove north-eastwards for a distance of 5.00 metres.	1	-	Two wheels on the footway
42.	Robin Grove, the north-west side, from a point 8.60 metres north-east of the south-western flank wall of No.29 Robin Grove north-eastwards for a distance of 5.00 metres.	1	-	Two wheels on the footway

### SCHEDULE 7 (Continued)

No. of parking place	Designated parking place	Minimum number of parking bays	Minimum total length in metres not to be occupied by parking bays	Special manner of standing
1.	2.	3.	4.	5.
43.	Robin Grove, the north-west side, from a point 10.10 metres south-west of the north-eastern flank wall of No.34 Robin Grove north-eastwards for a distance of 5.00 metres.	1	-	Two wheels on the footway
44.	Robin Grove, the north-west side, from a point opposite the south-western flank wall of No.35 Robin Grove north-eastwards for a distance of 6.00 metres.	1	-	Two wheels on the footway
45.	Robin Grove, the south-east side, from a point 2.10 metres north-east of the south-western flank wall of Nos.1 and 2 Robin Grove south-westwards for a distance of 5.00 metres.	1	-	Two wheels on the footway
46.	Robin Grove, the south-east side, from a point opposite the north-eastern flank wall of No.3 Robin Grove south-westwards for a distance of 6.00 metres.	1	-	Two wheels on the footway
47.	<del>Robin Grove, the south-east side, from a point 700 millimetres south-west of the party wall of No.3 and Nos.4/6 Robin Grove south-westwards for a distance of 10.00 metres.</del>	1 <i>Revoked by 2012/39.</i>	-	Two wheels on the footway
48.	Robin Grove, the south-east side, from a point 2.00 metres south-west of the north-eastern flank wall of No.9 Robin Grove south-westwards for a distance of 5.00 metres.	1	-	Two wheels on the footway
49.	Robin Grove, the south-east side, from a point 11.70 metres south-west of the north-eastern flank wall of No.9 Robin Grove south-west for a distance of 5.00 metres.	1	-	Two wheels on the footway

### SCHEDULE 7 (Continued)

No. of parking place	Designated parking place	Minimum number of parking bays	Minimum total length in metres not to be occupied by parking bays	Special manner of standing
1.	2.	3.	4.	5.
50.	Somerset Road, the north-west side, from a point 3.60 metres south-west of the north-eastern flank wall of No.1 Somerset Road south-westwards for a distance of 42.00 metres.	1	-	-
51.	Somerset Road, the north-west side, from a point 13.20 metres north-east of the north-eastern kerb-line of the northern arm of Upper Butts north-eastwards for a distance of 18.00 metres.	1	-	-
52.	Somerset Road, the north-west side, between a point 50.00 metres south-west of a point opposite the party wall of Nos.17 and 19 Somerset Road and a point 1.50 metres north-east of a point opposite the common boundary of Nos.29 and 31 Somerset Road.	1.	-	-
53.	Somerset Road, the north-west side, between a point 3.30 metres south-west of a point opposite the common boundary of Nos.29 and 31 Somerset Road and a point opposite the south-western kerb-line of Brent Road.	1	-	-
54.	Somerset Road, the south-east side, from a point opposite the north-eastern boundary of No.2 Somerset Road south-westwards for a distance of 48.00 metres.	1	-	-
55.	The Butts, the north-western arm, the north-west side, from a point 2.80 metres south-west of a point opposite the north-western wall of No.3 The Butts south-westwards for a distance of 7.20 metres.	1	-	at 90 degrees to the north-western kerb-line
56.	The Butts, the north-western arm, the north-west side, from a point 5.90 metres south-west of a point opposite the common boundary of Nos.13 and 15 The Butts south-westwards for a distance of 4.80 metres.	1	-	at 90 degrees to the north-western kerb-line

### SCHEDULE 7 (Continued)

No. of parking place	Designated parking place	Minimum number of parking bays	Minimum total length in metres not to be occupied by parking bays	Special manner of standing
1.	2.	3.	4.	5.
57.	The Butts, the south-western arm, the north-east side, from a point 10.40 metres south-east of the south-eastern kerb-line of the north-western arm of The Butts south-eastwards for a distance of 7.20 metres.	1	-	at 90 degrees to the north-eastern kerbline
58.	The Butts, the south-western arm, the south-east side, from a point 0.75 metres north-east of the north-eastern kerb-line of Caxton Mews north-eastwards for a distance of 10.00 metres.	1	-	-
59.	The Butts, the south-western arm, the south-west side, from a point 7.20 metres south-east of the south-eastern kerb-line of the spur fronting Nos.40 to 44 The Butts south-eastwards for a distance of 11.00 metres.	1	-	-
60.	Willow Close, the south-east side, from a point opposite the north-eastern boundary of No.1 Willow Close south-westwards for a distance of 26.00 metres.	1	-	Two wheels on the footway
61.	Willow Close, the south-east side, from a point 0.3 metres south-west of the north-eastern flank wall of No.5 Willow Close south-westwards for a distance of 6.00 metres.	1	-	Two wheels on the footway
62.	Willow Close, the north-west side, all that area of carriageway fronting Nos.13 to 25 Willow Close.	1	-	at 90 degrees to the north-western kerb-line

## SCHEDULE 8

Parking places in respect of which a vehicle may be left during the permitted hours if it displays a valid residents' permit.

No. of parking place	Designated parking place	Minimum number of parking bays	Minimum total length in metres not to be occupied by parking bays	Special manner of standing
1.	2.	3.	4.	5.

No items.

**SCHEDULE 9**  
**Streets or parts of streets for the purpose of the definition of “business”**

1. Boston Manor Road, the south-west side, between the north-eastern kerb-line of The Butts, Brentford and the south-east side of the vehicular access to the Brentford Health Centre, Boston Manor Road.
2. Brent Road.
3. Brentside.
4. Church Walk, Brentford.
5. Robin Grove.
6. Somerset Road.
7. The Butts, Brentford.
8. Upper Butts.
9. Willow Close.



**SCHEDULE 10**  
**Streets or parts of streets for the purpose of the definition of “resident”**

1. Boston Manor Road, the south-west side, between the north-eastern kerb-line of The Butts, Brentford and the south-east side of the vehicular access to the Brentford Health Centre, Boston Manor Road.
2. Brent Road.
3. Brentside.
4. Church Walk, Brentford.
5. Robin Grove.
6. Somerset Road.
7. The Butts, Brentford.
8. Upper Butts.
9. Willow Close.

**SCHEDULE 11**  
**On-Street Pay & Display Parking Charges**

Charge	Period (Minutes)
£ 0.10	5
£ 0.20	9
£ 0.30	13
£ 0.40	18
£ 0.50	22
£ 0.60	26
£ 0.70	30
£ 0.80	35
£ 0.90	39
£ 1.00	43
£ 1.10	48
£ 1.20	52
£ 1.30	56
<b>£ 1.40</b>	<b>60</b>
£ 1.50	65
£ 1.60	69
£ 1.70	73
£ 1.80	78
£ 1.90	82
£ 2.00	86
£ 2.10	90
£ 2.20	95
£ 2.30	99
£ 2.40	103
£ 2.50	108
£ 2.60	112
£ 2.70	116
<b>£ 2.80</b>	<b>120</b>
£ 2.90	125
£ 3.00	129
£ 3.10	133
£ 3.20	138
£ 3.30	142
£ 3.40	146
£ 3.50	150
£ 3.60	155
£ 3.70	159
£ 3.80	163
£ 3.90	168
£ 4.00	172
£ 4.10	176
<b>£ 4.20</b>	<b>180</b>

Charge	Period (Minutes)
£ 4.30	185
£ 4.40	189
£ 4.50	193
£ 4.60	198
£ 4.70	202
£ 4.80	206
£ 4.90	210
£ 5.00	215
£ 5.10	219
£ 5.20	223
£ 5.30	228
£ 5.40	232
£ 5.50	236
<b>£ 5.60</b>	<b>240</b>
£ 5.70	245
£ 5.80	249
£ 5.90	253
£ 6.00	258
£ 6.10	262
£ 6.20	266
£ 6.30	270
£ 6.40	275
£ 6.50	279
£ 6.60	283
£ 6.70	288
£ 6.80	292
£ 6.90	296
<b>£ 7.00</b>	<b>300</b>
£ 7.10	305
£ 7.20	309
£ 7.30	313
£ 7.40	318
£ 7.50	322
£ 7.60	326
£ 7.70	330
£ 7.80	335
£ 7.90	339
£ 8.00	343
£ 8.10	348
£ 8.20	352
£ 8.30	356
<b>£ 8.40</b>	<b>360</b>

Charge	Period (Minutes)
£ 8.50	365
£ 8.60	369
£ 8.70	373
£ 8.80	378
£ 8.90	382
£ 9.00	386
£ 9.10	390
£ 9.20	395
£ 9.30	399
£ 9.40	403
£ 9.50	408
£ 9.60	412
£ 9.70	416
<b>£ 9.80</b>	<b>420</b>
£ 9.90	425
£ 10.00	429
£ 10.10	433
£ 10.20	438
£ 10.30	442
£ 10.40	446
£ 10.50	450
£ 10.60	455
£ 10.70	459
£ 10.80	463
£ 10.90	468
£ 11.00	472
£ 11.10	476
<b>£ 11.20</b>	<b>480</b>

**SCHEDULE 12**  
**Business Permit Charges**

	<b>12-month permit</b>
<b>Goods vehicle</b>	£400
<b>Passenger vehicle</b>	£635

**SCHEDULE 13**  
**Resident Permit Charges**

	<b>6-month permit</b>	<b>12-month permit</b>	<b>24-month permit</b>
<b>First vehicle</b>	£35	£60	£115
<b>Second vehicle</b>	£45	£80	£155
<b>Third vehicle</b>	£70	£130	£255

---

**EXPLANATORY NOTE**

(This note is not part of the Order, but is intended to indicate its general purport)

This Order revokes and re-enacts in a modified form the Hounslow (Parking Places) (No. 2) Order 2000 that imposed parking places in certain lengths of The Butts, Brentford area in the London Borough of Hounslow by:

- (a) updating the Articles of the base order to incorporate all subsequent amendments and take into account any minor drafting amendments and corrections; and
- (b) provide additional methods of payment of parking charges payable for leaving vehicles in the designated parking places by allowing payment by telephone using a telephone payment system.