

Inspection Report

Company Name LB of Hounslow	Scheduled Start Date 01/05/2025	Inspection Completed on 02/05/2025
Location of Inspection The Dell 6 To 8	Scheduled Time of Inspection 8:30 AM	Inspection Submission Time 11:49 AM
Inspector that undertook inspection Keith Asuncion	Template Used Estate Inspection	PDF Sent to keith.asuncion@hounslow.gov.uk




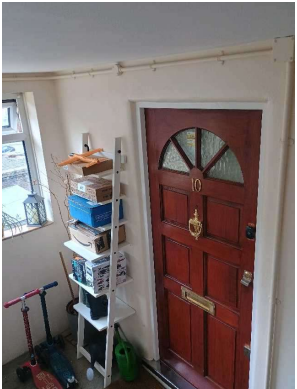
Inspection Score and Overall Grade		
Actual Score	Max Score	Inspection %
18	20	90
Banding Name Default Banding	Overall Inspection Result Default Banding Item	

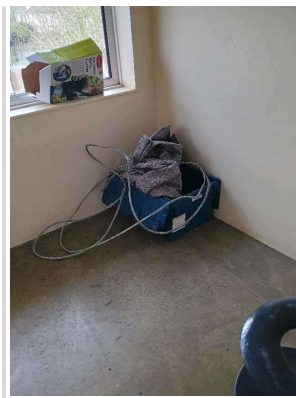
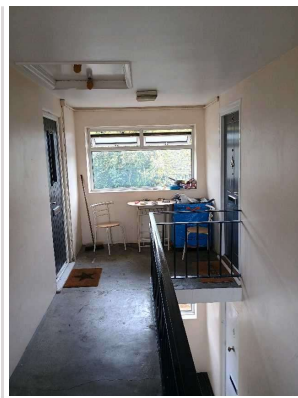
1 Inspection Details		
1.1 - Question Type of Inspection	1.1 - Responses Quarterly	
1.2 - Question Area	1.2 - Responses West	
1.3 - Question How many blocks are you inspecting in the estate today?	1.3 - Responses 4	

2 Block 1		
2.1 - Question Please state the name of the block you are inspecting	2.1 - Responses 13-23 Harrington Road West	
2.2 - Question Please confirm you have checked everything at this block?	2.2 - Responses Y	
2.3 - Question Are there any issues to raise at this block?	2.3 - Responses N	

3 Block 2		
3.1 - Question Please state the name of the block you are inspecting	3.1 - Responses 25-35 Harrington Road West	
3.2 - Question Please confirm you have checked everything at this block?	3.2 - Responses Y	
3.3 - Question Are there any issues to raise at this block?	3.3 - Responses N	

4 Block 3

4.1 - Question Please state the name of the block you are inspecting	4.1 - Responses 1-6 The Dell	
4.2 - Question Please confirm you have checked everything at this block?	4.2 - Responses Y	
4.3 - Question Are there any issues to raise at this block?	4.3 - Responses Y	4.3 - Comments 01/05/2025 Builders have installed Metrostors in the back garden of The Dell without permission if Housing. EIO has notified Caretaking Service who will liase with builders to advise the locations of where the Metrostors should be installed due to Caretaker pulling distance.
Q 4.3 - Photo 		
4.4 - Question Are there any Ground Maintenance Issues?	4.4 - Responses N	
4.11 - Question Are there any Internal Caretaking issues?	4.11 - Responses N	
4.26 - Question Are there any External Caretaking issues?	4.26 - Responses N	
4.37 - Question Are there any Communal Issues?	4.37 - Responses Y	4.37 - Comments 01/05/2025 Tenants leaving items in communal areas.
Q 4.37 - Photo 	Q 4.37 - Photo 	Q 4.37 - Photo 
Q 4.37 - Photo	Q 4.37 - Photo	



4.38 - Question Are there any Abandoned Vehicles?	4.38 - Responses N	
4.39 - Question Are there any Street Lighting Issues?	4.39 - Responses N	
4.40 - Question Are there any Pot holes?	4.40 - Responses Y	4.40 - Comments 01/05/2025 EIO reported potholes previously to Hounslow Highways, but they do not meet requirements for them to be repaired.
4.41 - Question Are there any issues with the Cleanliness of roads/car parks?	4.41 - Responses N	
4.42 - Question Are the notice boards up to date?	4.42 - Responses Y	
4.43 - Question Is there any old signage to report?	4.43 - Responses N	
4.44 - Question Are there any Items stored in drying areas?	4.44 - Responses N	
4.45 - Question Are there any Items stored in Communal areas?	4.45 - Responses Y	
4.46 - Question Is the roof access doors locked?	4.46 - Responses Y	
4.47 - Question Are there any Bulk rubbish items?	4.47 - Responses N	
4.48 - Question Are there any Untidy gardens?	4.48 - Responses N	
4.49 - Question Are there any Fire Risk Issues?	4.49 - Responses Y	4.49 - Comments 01/05/2025 Items left in communal areas.
4.50 - Question Are the Fire Doors in place and closing mechanisms checked?	4.50 - Responses Y	
4.52 - Question Are the Electrical Cupboards locked?	4.52 - Responses Y	
4.56 - Question Have you checked access with a fire drop key?	4.56 - Responses Y	
4.57 - Question Are there Communal Repairs to raise?	4.57 - Responses N	

5 Block 4

5.1 - Question	5.1 - Responses	
-----------------------	------------------------	--

Please state the name of the block you are inspecting	7-12 The Dell	
5.2 - Question Please confirm you have checked everything at this block?	5.2 - Responses Y	
5.3 - Question Are there any issues to raise at this block?	5.3 - Responses Y	5.3 - Comments 01/05/2025 Residents leaving items in communal areas.
5.4 - Question Are there any Ground Maintenance Issues?	5.4 - Responses N	
5.11 - Question Are there any Internal Caretaking issues?	5.11 - Responses N	
5.26 - Question Are there any External Caretaking issues?	5.26 - Responses N	
5.37 - Question Are there any Communal Issues?	5.37 - Responses Y	5.37 - Comments 01/05/2025 Items left in communal areas.
5.38 - Question Are there any Abandoned Vehicles?	5.38 - Responses N	
5.39 - Question Are there any Street Lighting Issues?	5.39 - Responses N	
5.40 - Question Are there any Pot holes?	5.40 - Responses Y	5.40 - Comments 01/05/2025 EIO reported items previously to Hounslow Highways, but they do not meet the requirements for them to be repaired.
5.41 - Question Are there any issues with the Cleanliness of roads/car parks?	5.41 - Responses N	
5.42 - Question Are the notice boards up to date?	5.42 - Responses Y	
5.43 - Question Is there any old signage to report?	5.43 - Responses N	
5.44 - Question Are there any Items stored in drying areas?	5.44 - Responses N	
5.45 - Question Are there any Items stored in Communal areas?	5.45 - Responses Y	5.45 - Comments 01/05/2025 Residents leaving furniture and other items in communal areas.
5.46 - Question Is the roof access doors locked?	5.46 - Responses Y	
5.47 - Question Are there any Bulk rubbish items?	5.47 - Responses N	
5.48 - Question Are there any Untidy gardens?	5.48 - Responses N	
5.49 - Question Are there any Fire Risk Issues?	5.49 - Responses Y	5.49 - Comments 01/05/2025 Items in communal areas. Evidence of resident smoking in communal area. Has put table in communal area outside flat with ashtray..
5.50 - Question Are the Fire Doors in place and closing mechanisms checked?	5.50 - Responses Y	
5.52 - Question	5.52 - Responses	

Are the Electrical Cupboards locked?	Y	
5.56 - Question Have you checked access with a fire drop key?	5.56 - Responses N	5.56 - Comments 01/05/2025 EIO drop key does not fit drop key panel. Needs a different size drop key.
5.57 - Question Are there Communal Repairs to raise?	5.57 - Responses N	

17 Overall Estate Rating		
17.1 - Question Please rate the overall Grounds Maintenance of the estate	17.1 - Responses A	
17.2 - Question Please rate the overall Internal Caretaking of the estate	17.2 - Responses A	
17.3 - Question Please rate the overall External Caretaking of the estate	17.3 - Responses A	
17.4 - Question Please rate the overall Communal Issues of the estate	17.4 - Responses B	
17.5 - Question Please rate the overall Fire Risks of the estate	17.5 - Responses B	