

Inspection Report

Company Name LB of Hounslow	Scheduled Start Date 29/04/2025	Inspection Completed on 29/04/2025
Location of Inspection Coates Walk 1 To 20	Scheduled Time of Inspection 10:20 AM	Inspection Submission Time 11:30 AM
Inspector that undertook inspection Will Reeves	Template Used Estate Inspection	PDF Sent to Will.Reeves@hounslow.gov.uk,tom.mccarthy@hounslow.gov.uk,miguel.re@hounslow.gov.uk

Inspection Score and Overall Grade

Actual Score	Max Score	Inspection %
17	20	85
Banding Name Default Banding	Overall Inspection Result Default Banding Item	

1 Inspection Details

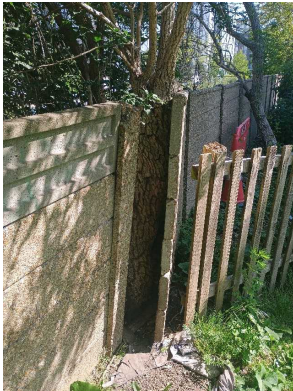
1.1 - Question Type of Inspection	1.1 - Responses Quarterly	
1.2 - Question Area	1.2 - Responses East	
1.3 - Question How many blocks are you inspecting in the estate today?	1.3 - Responses 3	

2 Block 1

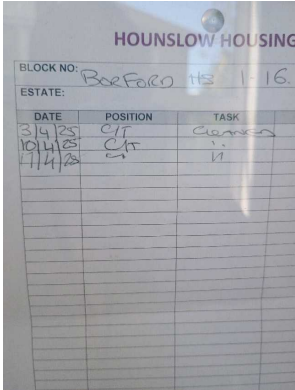
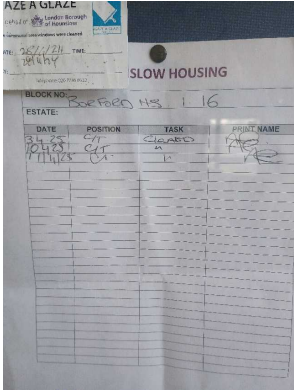
2.1 - Question Please state the name of the block you are inspecting	2.1 - Responses burford house	
2.2 - Question Please confirm you have checked everything at this block?	2.2 - Responses Y	
2.3 - Question Are there any issues to raise at this block?	2.3 - Responses Y	
2.4 - Question Are there any Ground Maintenance Issues?	2.4 - Responses Y	
2.5 - Question Are there Grass Cutting issues?	2.5 - Responses N	
2.6 - Question Are there Weeding issues?	2.6 - Responses Y	2.6 - Comments 29/04/2025 HH not gm

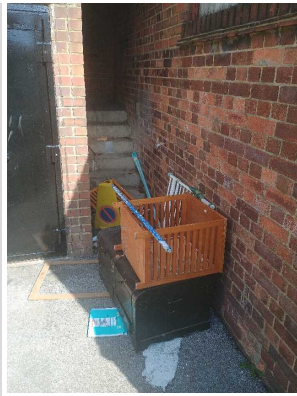
Q 2.6 - Photo

2.7 - Question Are there Flower/Shrub Areas issues?	2.7 - Responses N	
2.8 - Question Are there Trees: Pruning issues?	2.8 - Responses Y	2.8 - Comments 29/04/2025 tree is still here-serious issue

Q 2.8 - Photo

2.9 - Question Are there Safety – Foliage & Root Problems issues?	2.9 - Responses Y	
2.10 - Question Are there Hedges Trimmed issues?	2.10 - Responses N	
2.11 - Question Are there any Internal Caretaking issues?	2.11 - Responses Y	
2.12 - Question Are there any Cleanliness: Stairs issues?	2.12 - Responses N	
2.13 - Question Are there any Landings issues?	2.13 - Responses N	
2.14 - Question Are there any Entrances issues?	2.14 - Responses N	
2.15 - Question Are there any Lifts issues?	2.15 - Responses N	
2.16 - Question Are there any Door and Window Glazing issues?	2.16 - Responses N	
2.17 - Question Are there any Ledges issues?	2.17 - Responses N	
2.18 - Question Are there any Walls issues?	2.18 - Responses N	
2.19 - Question Are there any Lighting issues?	2.19 - Responses N	


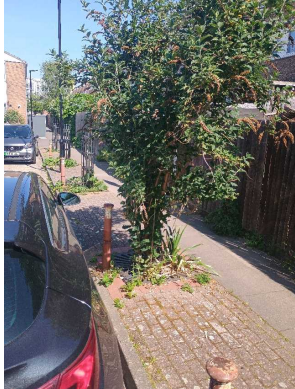
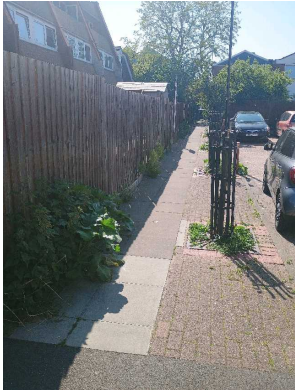

2.20 - Question Are there any Handrails secure issues?	2.20 - Responses N	
2.21 - Question Are there any Chute Rooms issues?	2.21 - Responses N	
2.22 - Question Are there any Signage issues?	2.22 - Responses N	
2.23 - Question Are there any Graffiti issues?	2.23 - Responses N	
2.24 - Question Are there any issues with cleaning completion sheets?	2.24 - Responses Y	2.24 - Comments 29/04/2025 board not signed for most recent week
Q 2.24 - Photo 	Q 2.24 - Photo 	
2.25 - Question Are there any issues with Notice Boards?	2.25 - Responses N	
2.26 - Question Are there any External Caretaking issues?	2.26 - Responses Y	
2.27 - Question Are there any Cleanliness: Grassed Areas issues?	2.27 - Responses N	
2.28 - Question Are there any Paved Areas issues?	2.28 - Responses N	
2.29 - Question Are there any Car Parks issues?	2.29 - Responses N	
2.30 - Question Are there any Play Areas (Cleanliness, condition of play equipment, surfaces and fencing) issues?	2.30 - Responses N	
2.31 - Question Are there any Litter Picking issues?	2.31 - Responses N	
2.32 - Question Are there any Bin Rooms issues?	2.32 - Responses Y	2.32 - Comments 29/04/2025 items dumped by bin room
Q 2.32 - Photo		



2.33 - Question Are there any Bulk Refuse and Graffiti issues?	2.33 - Responses N	
2.34 - Question Are there any Signs issues?	2.34 - Responses N	
2.35 - Question Are there any Numberings issues?	2.35 - Responses N	
2.36 - Question Are there any Notice Boards issues?	2.36 - Responses N	
2.37 - Question Are there any Communal Issues?	2.37 - Responses N	
2.49 - Question Are there any Fire Risk Issues?	2.49 - Responses N	
2.57 - Question Are there Communal Repairs to raise?	2.57 - Responses Y	
2.58 - Question Are there any Communal lighting repairs?	2.58 - Responses N	
2.59 - Question Are there any Window repairs?	2.59 - Responses N	
2.60 - Question Are there any Door Handles and Closures repairs?	2.60 - Responses Y	2.60 - Comments 29/04/2025 burford 9-16 south entrance door doesn't shut properly
2.61 - Question Are there any Drying Areas repairs?	2.61 - Responses N	
2.62 - Question Are there any Electrical Cupboard Doors repairs?	2.62 - Responses N	
2.63 - Question Are there any Garage Area repairs?	2.63 - Responses N	
2.64 - Question Are there any Graffiti repairs?	2.64 - Responses N	
2.65 - Question Are there any Vandalism repairs?	2.65 - Responses N	
2.66 - Question Are there any Laundry room repairs?	2.66 - Responses N	
2.67 - Question Are there any Flooring repairs?	2.67 - Responses N	

3 Block 2

3.1 - Question Please state the name of the block you are inspecting	3.1 - Responses Coates Walk	

3.2 - Question Please confirm you have checked everything at this block?	3.2 - Responses Y	
3.3 - Question Are there any issues to raise at this block?	3.3 - Responses Y	
3.4 - Question Are there any Ground Maintenance Issues?	3.4 - Responses Y	3.4 - Comments 29/04/2025 weeds in first Ealing road car park 3.4 - Comments 29/04/2025 tree cages by car park- need to chase Dave Horgan for response
Q 3.4 - Photo 	Q 3.4 - Photo 	Q 3.4 - Photo 
3.5 - Question Are there Grass Cutting issues?	3.5 - Responses N	
3.6 - Question Are there Weeding issues?	3.6 - Responses Y	3.6 - Comments 29/04/2025 weeding by second Ealing road car park
Q 3.6 - Photo 	Q 3.6 - Photo 	
3.7 - Question Are there Flower/Shrub Areas issues?	3.7 - Responses N	
3.9 - Question Are there Safety – Foliage & Root Problems issues?	3.9 - Responses N	
3.10 - Question Are there Hedges Trimmed issues?	3.10 - Responses N	
3.11 - Question Are there any Internal Caretaking issues?	3.11 - Responses N	
3.26 - Question Are there any External Caretaking issues?	3.26 - Responses Y	
3.27 - Question	3.27 - Responses	

Are there any Cleanliness: Grassed Areas issues?	N	
3.28 - Question Are there any Paved Areas issues?	3.28 - Responses N	
3.29 - Question Are there any Car Parks issues?	3.29 - Responses N	
3.30 - Question Are there any Play Areas (Cleanliness, condition of play equipment, surfaces and fencing) issues?	3.30 - Responses N	
3.31 - Question Are there any Litter Picking issues?	3.31 - Responses N	
3.32 - Question Are there any Bin Rooms issues?	3.32 - Responses N	
3.33 - Question Are there any Bulk Refuse and Graffiti issues?	3.33 - Responses Y	3.33 - Comments 29/04/2025 dumping by 31-58 bin shelter 3.33 - Comments 29/04/2025 grafitti on 11-30 bin shelter 3.33 - Comments 29/04/2025 dumping behind coates 3.33 - Comments 29/04/2025 grafitti on 51-68 bin
Q 3.33 - Photo 	Q 3.33 - Photo 	Q 3.33 - Photo 
Q 3.33 - Photo 		
3.34 - Question Are there any Signs issues?	3.34 - Responses N	
3.35 - Question Are there any Numberings issues?	3.35 - Responses N	
3.36 - Question Are there any Notice Boards issues?	3.36 - Responses N	
3.37 - Question Are there any Communal Issues?	3.37 - Responses Y	

3.38 - Question Are there any Abandoned Vehicles?	3.38 - Responses N	
3.39 - Question Are there any Street Lighting Issues?	3.39 - Responses N	
3.40 - Question Are there any Pot holes?	3.40 - Responses N	
3.41 - Question Are there any issues with the Cleanliness of roads/car parks?	3.41 - Responses N	
3.42 - Question Are the notice boards are up to date?	3.42 - Responses Y	
3.43 - Question Is there any old signage to report?	3.43 - Responses N	
3.44 - Question Are there any Items stored in drying areas?	3.44 - Responses N	
3.45 - Question Are there any Items stored in Communal areas?	3.45 - Responses N	
3.46 - Question Is the roof access doors locked?	3.46 - Responses N	
3.47 - Question Are there any Bulk rubbish items?	3.47 - Responses N	
3.48 - Question Are there any Untidy gardens?	3.48 - Responses Y	3.48 - Comments 29/04/2025 17 coates garden
Q 3.48 - Photo 		
3.49 - Question Are there any Fire Risk Issues?	3.49 - Responses N	
3.57 - Question Are there Communal Repairs to raise?	3.57 - Responses Y	3.57 - Comments 29/04/2025 21-30 fire drop 3.57 - Comments 29/04/2025 11-20 fire drop 3.57 - Comments 29/04/2025 51-68 fire drop
3.58 - Question Are there any Communal lighting repairs?	3.58 - Responses N	
3.59 - Question Are there any Window repairs?	3.59 - Responses N	
3.60 - Question Are there any Door Handles and Closures repairs?	3.60 - Responses N	
3.61 - Question Are there any Drying Areas repairs?	3.61 - Responses N	
3.62 - Question	3.62 - Responses	

Are there any Electrical Cupboard Doors repairs?	N	
3.63 - Question Are there any Garage Area repairs?	3.63 - Responses N	
3.64 - Question Are there any Graffiti repairs?	3.64 - Responses N	
3.65 - Question Are there any Vandalism repairs?	3.65 - Responses N	
3.66 - Question Are there any Laundry room repairs?	3.66 - Responses N	
3.67 - Question Are there any Flooring repairs?	3.67 - Responses N	

4 Block 3

4.1 - Question Please state the name of the block you are inspecting	4.1 - Responses burford road	
4.2 - Question Please confirm you have checked everything at this block?	4.2 - Responses Y	
4.3 - Question Are there any issues to raise at this block?	4.3 - Responses Y	
4.4 - Question Are there any Ground Maintenance Issues?	4.4 - Responses N	
4.11 - Question Are there any Internal Caretaking issues?	4.11 - Responses N	
4.26 - Question Are there any External Caretaking issues?	4.26 - Responses N	
4.37 - Question Are there any Communal Issues?	4.37 - Responses N	
4.49 - Question Are there any Fire Risk Issues?	4.49 - Responses N	
4.57 - Question Are there Communal Repairs to raise?	4.57 - Responses Y	
4.58 - Question Are there any Communal lighting repairs?	4.58 - Responses N	
4.59 - Question Are there any Window repairs?	4.59 - Responses N	
4.60 - Question Are there any Door Handles and Closures repairs?	4.60 - Responses Y	4.60 - Comments 29/04/2025 34-40 door not closing automatically
4.61 - Question Are there any Drying Areas repairs?	4.61 - Responses N	
4.62 - Question Are there any Electrical Cupboard Doors repairs?	4.62 - Responses N	
4.63 - Question Are there any Garage Area repairs?	4.63 - Responses N	
4.64 - Question Are there any Graffiti repairs?	4.64 - Responses N	
4.65 - Question	4.65 - Responses	

Are there any Vandalism repairs?	N	
4.66 - Question Are there any Laundry room repairs?	4.66 - Responses N	
4.67 - Question Are there any Flooring repairs?	4.67 - Responses N	

17 Overall Estate Rating		
17.1 - Question Please rate the overall Grounds Maintenance of the estate	17.1 - Responses C	
17.2 - Question Please rate the overall Internal Caretaking of the estate	17.2 - Responses A	
17.3 - Question Please rate the overall External Caretaking of the estate	17.3 - Responses A	
17.4 - Question Please rate the overall Communal Issues of the estate	17.4 - Responses A	
17.5 - Question Please rate the overall Fire Risks of the estate	17.5 - Responses B	