

Company Name LB of Hounslow	Scheduled Start Date 24/04/2025	Inspection Completed on 30/04/2025
Location of Inspection Edensor Gardens (ESTEDEN)	Scheduled Time of Inspection 11:03 AM	Inspection Submission Time 7:47 AM
Inspector that undertook inspection Harkiran Nandra	Template Used Estate Inspection	PDF Sent to harkiran.nandra@hounslow.gov.uk,Stefan.Nor@Hounslow.gov.uk

Inspection Score and Overall Grade

Actual Score	Max Score	Inspection %
13	16	81
Banding Name Default Banding	Overall Inspection Result Default Banding Item	

1 Inspection Details

1.1 - Question Type of Inspection	1.1 - Responses Quarterly	
1.2 - Question Area	1.2 - Responses East	
1.3 - Question How many blocks are you inspecting in the estate today?	1.3 - Responses 19	

2 Block 1

2.1 - Question Please state the name of the block you are inspecting	2.1 - Responses 1-6	
2.2 - Question Please confirm you have checked everything at this block?	2.2 - Responses Y	
2.3 - Question Are there any issues to raise at this block?	2.3 - Responses Y	
2.4 - Question Are there any Ground Maintenance Issues?	2.4 - Responses N	
2.11 - Question Are there any Internal Caretaking issues?	2.11 - Responses Y	
2.14 - Question Are there any Entrances issues?	2.14 - Responses Y	2.14 - Comments 24/04/2025 entrance of requires a Hoover.
Q 2.14 - Photo		



3 Block 2		
3.1 - Question Please state the name of the block you are inspecting	3.1 - Responses 7-12	
3.2 - Question Please confirm you have checked everything at this block?	3.2 - Responses Y	
3.3 - Question Are there any issues to raise at this block?	3.3 - Responses Y	
3.4 - Question Are there any Ground Maintenance Issues?	3.4 - Responses Y	3.4 - Comments 24/04/2025 plant going up.wall blocking window requires to cut back.
Q 3.4 - Photo 		
3.11 - Question Are there any Internal Caretaking issues?	3.11 - Responses Y	
3.14 - Question Are there any Entrances issues?	3.14 - Responses Y	3.14 - Comments 24/04/2025 entrance requires a Hoover.
Q 3.14 - Photo		



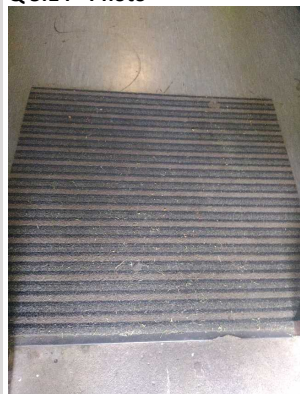
4 Block 3

4.1 - Question Please state the name of the block you are inspecting	4.1 - Responses 13 - 18	
4.2 - Question Please confirm you have checked everything at this block?	4.2 - Responses Y	
4.3 - Question Are there any issues to raise at this block?	4.3 - Responses Y	


5 Block 4



5.1 - Question Please state the name of the block you are inspecting	5.1 - Responses 19-30	
5.2 - Question Please confirm you have checked everything at this block?	5.2 - Responses Y	
5.3 - Question Are there any issues to raise at this block?	5.3 - Responses Y	
5.11 - Question Are there any Internal Caretaking issues?	5.11 - Responses Y	
5.14 - Question Are there any Entrances issues?	5.14 - Responses Y	5.14 - Comments 24/04/2025 entrance requires hoover

Q 5.14 - Photo


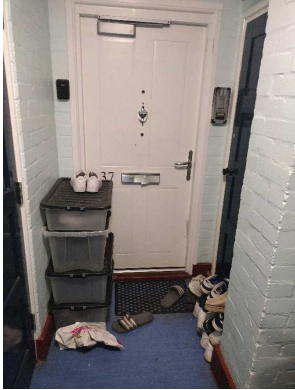



5.57 - Question Are there Communal Repairs to raise?	5.57 - Responses Y	
--	------------------------------	--

5.59 - Question Are there any Window repairs?	5.59 - Responses Y	5.59 - Comments 24/04/2025 cracked vision panel.
Q 5.59 - Photo 		

6 Block 5		
6.1 - Question Please state the name of the block you are inspecting	6.1 - Responses 43-48	
6.2 - Question Please confirm you have checked everything at this block?	6.2 - Responses Y	
6.3 - Question Are there any issues to raise at this block?	6.3 - Responses Y	
6.11 - Question Are there any Internal Caretaking issues?	6.11 - Responses Y	
6.14 - Question Are there any Entrances issues?	6.14 - Responses Y	6.14 - Comments 24/04/2025 requires a hoover and mop
Q 6.14 - Photo 	Q 6.14 - Photo 	


7 Block 6		
7.1 - Question Please state the name of the block you are inspecting	7.1 - Responses 37-42	
7.2 - Question Please confirm you have checked everything at this block?	7.2 - Responses Y	
7.3 - Question	7.3 - Responses Y	

Are there any issues to raise at this block?		
7.11 - Question Are there any Internal Caretaking issues?	7.11 - Responses Y	7.11 - Comments 24/04/2025 entrance requires a Hoover.
Q 7.11 - Photo 		
7.37 - Question Are there any Communal Issues?	7.37 - Responses Y	
7.45 - Question Are there any Items stored in Communal areas?	7.45 - Responses Y	7.45 - Comments 24/04/2025 EIO to write to tenants and removed items after
Q 7.45 - Photo 	Q 7.45 - Photo 	

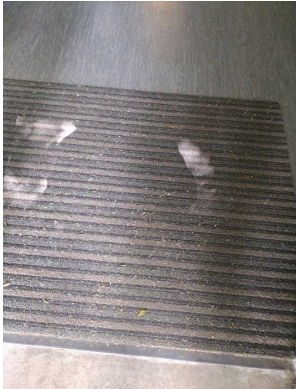
8 Block 7

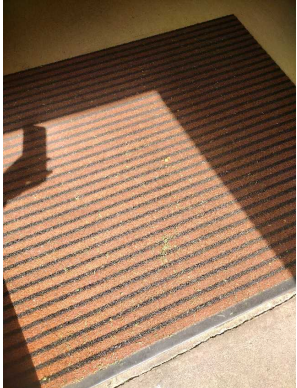
8.1 - Question Please state the name of the block you are inspecting	8.1 - Responses 31-36	
8.2 - Question Please confirm you have checked everything at this block?	8.2 - Responses Y	
8.3 - Question Are there any issues to raise at this block?	8.3 - Responses Y	
8.11 - Question Are there any Internal Caretaking issues?	8.11 - Responses Y	8.11 - Comments 24/04/2025 entrance requires a Hoover
Q 8.11 - Photo		

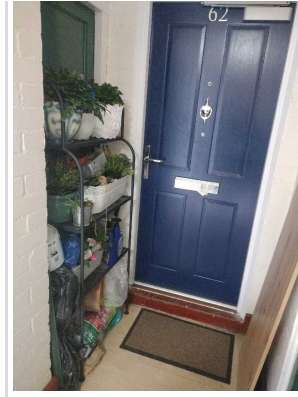
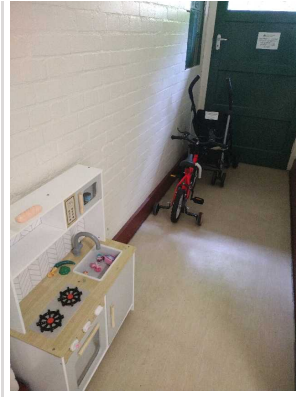


9 Block 8		
9.1 - Question Please state the name of the block you are inspecting	9.1 - Responses 49-60	
9.2 - Question Please confirm you have checked everything at this block?	9.2 - Responses Y	
9.3 - Question Are there any issues to raise at this block?	9.3 - Responses Y	
9.11 - Question Are there any Internal Caretaking issues?	9.11 - Responses Y	
9.14 - Question Are there any Entrances issues?	9.14 - Responses Y	9.14 - Comments 24/04/2025 requires a hoover and mop
Q 9.14 - Photo 		

10 Block 9		
10.1 - Question Please state the name of the block you are inspecting	10.1 - Responses 67-72	
10.2 - Question Please confirm you have checked everything at this block?	10.2 - Responses Y	
10.3 - Question Are there any issues to raise at this block?	10.3 - Responses Y	
10.11 - Question	10.11 - Responses Y	

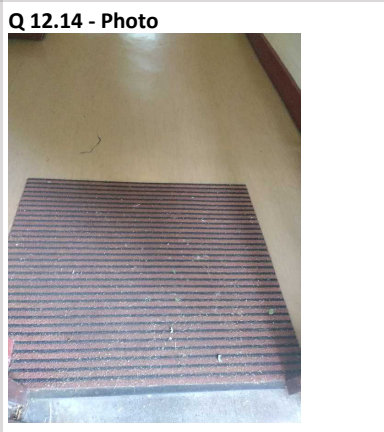
Are there any Internal Caretaking issues?		
10.14 - Question Are there any Entrances issues?	10.14 - Responses Y	10.14 - Comments 24/04/2025 hoovered required.
Q 10.14 - Photo 		

11 Block 10		
11.1 - Question Please state the name of the block you are inspecting	11.1 - Responses 61-66	
11.2 - Question Please confirm you have checked everything at this block?	11.2 - Responses Y	
11.3 - Question Are there any issues to raise at this block?	11.3 - Responses Y	
11.11 - Question Are there any Internal Caretaking issues?	11.11 - Responses Y	11.11 - Comments 24/04/2025 entrance requires a hoover
Q 11.11 - Photo 		
11.37 - Question Are there any Communal Issues?	11.37 - Responses Y	
11.45 - Question Are there any Items stored in Communal areas?	11.45 - Responses Y	11.45 - Comments 24/04/2025 items need to be removed from communal area EIO to write to block.
Q 11.45 - Photo	Q 11.45 - Photo	Q 11.45 - Photo

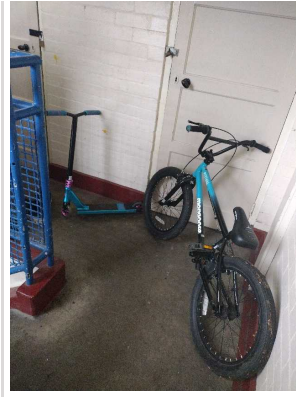


12 Block 11

12.1 - Question Please state the name of the block you are inspecting	12.1 - Responses 73-78	
12.2 - Question Please confirm you have checked everything at this block?	12.2 - Responses Y	
12.3 - Question Are there any issues to raise at this block?	12.3 - Responses Y	
12.11 - Question Are there any Internal Caretaking issues?	12.11 - Responses Y	
12.14 - Question Are there any Entrances issues?	12.14 - Responses Y	12.14 - Comments 24/04/2025 entrance requires a hoover.




12.37 - Question Are there any Communal Issues?	12.37 - Responses Y	
12.45 - Question Are there any Items stored in Communal areas?	12.45 - Responses Y	12.45 - Comments 24/04/2025 items in communal area need to removed EIO to send letter.
Q 12.45 - Photo	Q 12.45 - Photo	



13 Block 12		
13.1 - Question Please state the name of the block you are inspecting	13.1 - Responses 79-90	
13.2 - Question Please confirm you have checked everything at this block?	13.2 - Responses Y	
13.3 - Question Are there any issues to raise at this block?	13.3 - Responses Y	
13.11 - Question Are there any Internal Caretaking issues?	13.11 - Responses Y	
13.14 - Question Are there any Entrances issues?	13.14 - Responses Y	13.14 - Comments 24/04/2025 entrance requires hoover.
Q 13.14 - Photo 		
13.37 - Question Are there any Communal Issues?	13.37 - Responses Y	
13.45 - Question Are there any Items stored in Communal areas?	13.45 - Responses Y	13.45 - Comments 24/04/2025 items to be removed will write to tenants.
Q 13.45 - Photo		



14 Block 13

14.1 - Question Please state the name of the block you are inspecting	14.1 - Responses 103-107	
14.2 - Question Please confirm you have checked everything at this block?	14.2 - Responses Y	
14.3 - Question Are there any issues to raise at this block?	14.3 - Responses Y	
14.11 - Question Are there any Internal Caretaking issues?	14.11 - Responses Y	14.11 - Comments 24/04/2025 entrance requires a hoover
Q 14.11 - Photo 		

15 Block 14

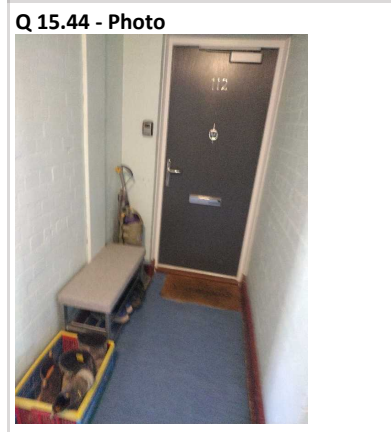
15.1 - Question Please state the name of the block you are inspecting	15.1 - Responses 109-120	
15.2 - Question Please confirm you have checked everything at this block?	15.2 - Responses Y	
15.3 - Question Are there any issues to raise at this block?	15.3 - Responses Y	
15.11 - Question Are there any Internal Caretaking issues?	15.11 - Responses Y	
15.14 - Question Are there any Entrances issues?	15.14 - Responses Y	15.14 - Comments

		24/04/2025 entrance requires a hoover
--	--	---------------------------------------



15.37 - Question Are there any Communal Issues?	15.37 - Responses Y	
---	-------------------------------	--

15.44 - Question Are there any Items stored in drying areas?	15.44 - Responses Y	
--	-------------------------------	--



16 Block 15

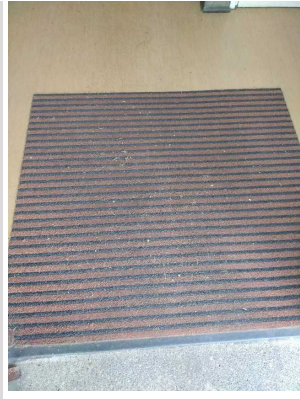
16.1 - Question Please state the name of the block you are inspecting	16.1 - Responses 157-168	
---	------------------------------------	--

16.2 - Question Please confirm you have checked everything at this block?	16.2 - Responses Y	
---	------------------------------	--

16.3 - Question Are there any issues to raise at this block?	16.3 - Responses Y	
--	------------------------------	--

16.11 - Question Are there any Internal Caretaking issues?	16.11 - Responses Y	16.11 - Comments 30/04/2025 hoover required.
--	-------------------------------	--





17 Overall Estate Rating

17.1 - Question Please rate the overall Grounds Maintenance of the estate	17.1 - Responses A	
17.2 - Question Please rate the overall Internal Caretaking of the estate	17.2 - Responses B	
17.3 - Question Please rate the overall External Caretaking of the estate	17.3 - Responses B	
17.4 - Question Please rate the overall Communal Issues of the estate	17.4 - Responses B	