



# Short Breaks for Disabled Children

May 2025 newsletter



London Borough  
of Hounslow

FREE May half-term holiday  
Short Breaks inside!



# Welcome

Welcome to the May half term newsletter! You will find inside a programme of activities taking place over the holiday which will be fun and enjoyable for your young person and the whole family.

Hope you all have a great holiday!

Jo Dawson and Collin Hazeley – Short Breaks

## What is a Short Break?

Short breaks provide opportunities for disabled children and young people to spend time away from their primary carers. They aim to provide parents and carers a necessary and valuable break away from their caring responsibilities in order to recharge their batteries.

They enable disabled children and young people to have the chance to develop new friendships, take part in new experiences and to have fun doing positive activities like sports, music therapy, youth clubs and much more.

A short break may include a few hours, a day, evening, overnight stay, weekend or sometimes longer. It could take place in the family home, at another home or out in the wider community.

Hounslow Short Breaks team also endeavour to provide short breaks for the whole family in an environment that is sympathetic to the disabled child or young



person, for example, theatre shows and cinema screenings.

For more information, please see our Short Breaks Statement on the Hounslow website – [www.hounslow.gov.uk/shortbreaks](http://www.hounslow.gov.uk/shortbreaks) under 'Downloads'.

**If you have any queries, please do call the Short Breaks team on 020 8583 3636.**

## SHORT BREAKS BOOKING PROCEDURE – please read

This newsletter has been sent to families on Wednesday 30 April and families will be able to book Short Breaks as from the week commencing 5 May. No bookings will take place before Tuesday 6 May.

Tuesday 6 May .....	Pathway	3
Wednesday 7 May .....	Pathway	3
Thursday 8 May .....	Pathways	2 3
Friday 9 May .....	Pathways	2 3
Monday 12 May .....	Pathways	1 2 3
Tuesday 13 May .....	Pathways	1 2 3

If you have any questions or are unsure which pathway your child meets, please do not hesitate to contact the Short Breaks Team on 020 8583 3636. **Please note that we are unable to do any registrations during the booking period.**

## Unique Identifying Number (UIN)



If you have not already registered for your UIN, please do call the Short Breaks team on **020 8583 3636**. It is important that you do this as you will need a UIN to book onto any of the Short Breaks programme. All our Short Breaks providers (Hounslow Play team, Brentford Sports, Feltham Bees, Richmond Music Trust, Watermans, Griffin Park Learning Zone, Park Lane Stables) will require the UIN as part of the booking process.

**Please note that we are unable to do any registrations during booking days.**

## Hounslow Parent Carers Forum

Hounslow Parent Carers Forum is part of a nationwide organisation that helps parent and carers of children with Special Educational Needs and Disabilities (SEND). We are there to listen to you and try to support you to sign post where needed.

We also discuss common issues that parent/carers have with the local authority and other organisations in order to help improve services. All of us who work for the forum have children with SEND.

We offer Coffee & Chat Mornings and Afternoons, along with newsletters that provide updates and helpful information on SEN topics in the area. Additionally, we host a monthly forum where representatives from the Council, other organisations, and charities come to discuss their services and answer your questions. Best way to keep up to date with what we have going on is to see our online diary on our website - [www.hounslowpcf.co.uk](http://www.hounslowpcf.co.uk)



Dates for up-coming Forum meetings are as follows:

- Tuesday 20 May
- Tuesday 17 June
- Tuesday 15 July
- Tuesday 16 September

Times: 10.15am-12.30am

**Hounslow Youth Centre**

Kingsley Road, Hounslow, Middlesex TW3 1QA

Email: [info@hounslowpcf.co.uk](mailto:info@hounslowpcf.co.uk)

Tel: 020 8570 4671



## Taxicards



This scheme allows London residents with a mobility impairment which prevents them from using buses or trains to travel in contracted licensed radio taxis – black cabs or private hire vehicles at subsidised rates. For further information, please call 020 7934 9791 or visit [www.londoncouncils.gov.uk/services/taxicard](http://www.londoncouncils.gov.uk/services/taxicard)

## SUPPORT

If your child or young person needs help to access short breaks, support is available!

Please do call the **Short Breaks team** on **020 8583 3636**.



# Skylarks Hounslow is coming later this summer!

Skylarks Charity is a growing charity which has been helping children and families since 2006. We are based in southwest London and support thousands of children and young people with disabilities or additional needs, as well as their families.

Opening this summer at Inwood Road Park, Skylarks Hounslow will be in the centre of the community, helping families to connect with each other and access support and guidance.

We offer many free services for children and young people with additional needs. We also give advice and support to the families and carers. Skylarks Hounslow will be fully accessible and provides special therapies, fun activities, and workshops to help with life and work skills.



Register to use our services:  
[www.skylarks.charity/register](http://www.skylarks.charity/register)



## Useful websites for families of disabled children

Please find below several websites that offer help and support in various ways to families with disabled children:

<http://newlifecharity.co.uk/docs/care-services/Play-Therapy-Pods.shtml>

<https://www.disability-grants.org/grants-for-children.html>

<https://www.turn2us.org.uk/>

Our SEND Education advice service helps families understand the support systems available. We want to help children grow and succeed.

# Special Educational Needs and Disability Information, Advice and Support Service (SEND IASS)

## What Is SEND IASS?

**Under the Children and Families Act (2014) it is a legal requirement that all Local Authorities have a Special Educational Needs and Disabilities Information Advice and Support Service (SENDIASS).**

The Hounslow Special Educational Needs and Disabilities Information Advice and Support Service (SENDIASS) provides this service for parents and carers of children and young people with special educational needs and disabilities (SEND) in the borough.

This service is also offered directly to young people as well. While the service is funded by the London Borough of Hounslow (LBH), Hounslow SENDIASS works independently of the local authority.

**Hounslow SENDIASS is free to use, impartial and confidential.**

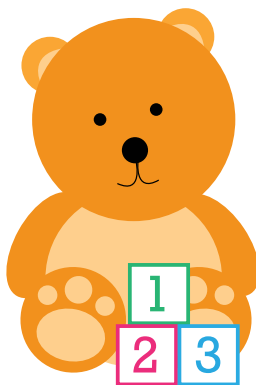


## What we do

Hounslow SENDIASS provides independent and impartial advice based on the law and government guidance. We are able to:

- Meet with you virtually or in person to discuss your concerns or needs. Communication may also be by phone and email
- Explain how the SEND system works – for instance, accessing Education, Health, and Care (EHC) plans
- Assist you in you navigating the often-complex world of SEND
- Signpost you to appropriate local authority services, including the Local Offer
- Support you through dispute resolution and mediation processes with schools and the local authority

(NB. Where you request support at a meeting, this is subject to appropriateness, availability, and capacity)



## What we don't do

Our aim is to empower young people, parents, and carers to take informed decisions around SEND for themselves. We don't however:

- Tell you what is best for you and your child
- Tell other professionals what to do
- Identify appropriate schools for your child
- Represent you at meetings, including mediation and tribunals
- Assist in the preparation of EHC or tribunal documentation
- Provide an administrative service for you, including contacting or arranging meetings for you with other professionals and form-filling
- Help with benefit claims, housing difficulties, Blue Badges etc

(NB. If your child has an EHC plan, your first contact should be your child's EHC caseworker)



## You can help us by:

- Leaving a message when you phone as we do not respond to missed calls where no message has been left (We aim to respond to all enquires within 5 working days)
- Keep us updated on progress in relation to the resolution of your concerns or needs
- Let us know when your issues have been resolved

## Data Protection

All the information that Hounslow SENDIASS gathers from you is securely stored electronically and separate to local authority departments. Information will only be shared with your permission. However, where there may a safeguarding concern Hounslow SENDIASS is obliged to share such concerns with appropriate professionals.

## How to access our service

We are a self-refer service. Parents are able to access us directly. We are unable to take referrals from professionals.

**If you would like our help, please telephone us on 020 8583 2607 or email us at [sendiass@hounslow.gov.uk](mailto:sendiass@hounslow.gov.uk)**

# Disability Access Fund (DAF)

DAF is available to support children with special educational needs and disabilities (SEND) in their childcare setting. Childcare providers can receive £615 per year for every child who meets the eligibility criteria.

## Who is eligible?

To be eligible children must be:

- aged 3 or 4 years old
- using a funded free early education and childcare place in a registered childcare setting
- in receipt of Disability Living Allowance (DLA)\*



## What can the funding be used for?

The funding is available to help childcare providers make reasonable adjustments at their setting to improve children's access to funded early education. It will be paid directly to the childcare provider and they will be able to decide how it should be spent. The funding cannot be used towards childcare fees.

Your child does not need to be using all of their funded early education and childcare hours for their childcare provider to be able to receive the full £615 of funding. Please speak to your childcare provider if you think your child may qualify.

Further information on DAF can be found on the Hounslow Local Offer through the following link: <https://beta.hounslow.gov.uk/send-local-offer>

\* Many parents miss out on this vital benefit - did you know that you don't have to wait for a condition to be diagnosed before you can claim DLA for your child? You can claim DLA so long as it is clear that there is some underlying condition - whether physical, mental or behavioural - as a result of which your child needs extra care or help in getting around. For more information, visit [www.gov.uk/disability-living-allowance-children](http://www.gov.uk/disability-living-allowance-children).

# Eligibility Criteria

You will see the table which describes the pathways of need overleaf, on pages 10-11. Below, we have explained how to assess your child's needs in relation to the pathways.

**Step 1:** Have a look at Band A and see where your child's disability sits in each pathway.

**Step 2:** Have a look at Bands B and C if they apply. Think about the four dimensions – Communication, Personal Care, Safety and Supervision, Behaviour and Social Integration. If your child meets one or more of the descriptions in either Band B and C, then they are likely to meet the respective pathway.

If you are unsure or if you see that they sit in multiple pathways, please do give the Short Breaks team a call and we will go through it with you on 020 8583 3636.

## Things to think about:

**Pathway 1:** The child will most likely attend a mainstream school and can access most mainstream activities with minimal support.

**Pathway 2:** The child will either attend a mainstream school (with specialist support) or attend a specialist school and will need some additional support to access short breaks. They may have an Education, Health and Care Plan.

**Pathway 3:** The child will most likely attend a specialist school and require specialist support to access short breaks. They will most likely have an Education, Health and Care Plan. They will most likely be known to the Social Work team for Children with Disabilities.

**The pathway for the child or young person may change at different times throughout their lives as their needs may change.**



# Pathways of Need

	Dimension	Pathway 1 Level of Need	Pathway 2 Level of Need	Pathway 3 Level of Need
Band A	<b>Mobility</b>	Able to walk unassisted, but with difficulty or poor co-ordination.	Walks, but only with aids or assistance. May use a wheelchair sometimes.	Full time wheelchair user and/or Mobility severely restricted without special provision.
	<b>Vision</b>	Severe or profound problem with one eye. Less than half visual field loss. Able to function independently.	Able to read print with simple aids or assistance. Defect of at least half visual field. May be eligible for registration as partially sighted.	Unable to read large print without intensive educational assistance or sophisticated aids. Registered.
	<b>Hearing</b>	Severe or profound hearing loss in one ear. Hearing loss 20-40 dB	Hearing loss 41-70 dB	Hearing loss >71 dB
	<b>Functioning and Learning ability</b>	Overall functioning slightly below expected level for age. May have a mild or moderate learning disability	Overall functioning around half expected level for age. Has a moderate learning disability	Overall functions significantly below expected level for age. Have a severe learning disability or a moderate learning disability and diagnosed ASD.
	<b>Health</b>	Known health condition, which is under control but occasionally interferes with everyday activities in a minor way.	Health condition that limits normal activities, including self-care and personal hygiene, access to services. May interfere with opportunities for development or education.	Diagnosed health condition, which is severe and potentially life threatening, and results in frequent hospital admissions that limits accessing developmental or educational activities. May be in receipt of Continuing Care or palliative care from Health Services.

## IMPACT OF DISABILITY

Band B	<b>Communication</b>	Delayed language development only.	Delayed/ disorganised verbal communication causing difficulty. Speech supplemented by alternate communication method.	Uses communication other than words, e.g. symbols, makaton, BSL.
	<b>Personal care</b>	Child requires minimal support beyond that of their peers with everyday care needs; this will include toileting, washing and dressing.	Child requires practical support beyond that of their peers with everyday care needs; this will include toileting, washing and dressing.	Child requires assistance beyond that of their peers with all everyday care needs; this will include toileting, washing and dressing and can be problematic and need skilled intervention.
	<b>Safety and Supervision</b>	Requires occasional supervision beyond that expected for their age. Poor sense of danger or risk of excitability.	Needs supervision to perform daily activities significantly greater than that expected for developmental age. Limited perception of danger to self or others.	Needs constant supervision during the day and night. Would place themselves or others at risk without supervision.
	<b>Behaviour and Social Integration</b>	Some mild, transient or frequent behaviour difficulties. Able to use local non-specialist universal services. Able to sustain limited peer relationships and social integration with support. Child requires support to access services.	Behaviour problems severe or frequent enough to require some specialist advice or provision. Significant support required to achieve social integration. Only able to sustain peer relationships with support. Child requires services to prevent or alleviate stress in the family.	Long-term behaviour difficulties make it difficult for the child to function appropriately most of the time, and maybe of risk to the child or carers without special provision. Dependence upon carer for social integration. Limited awareness of impact of behaviour upon others. Services required to prevent high risk of accommodation for the child.

Children and young people should meet at least one of the dimensions in Band A and one from Band B to meet the criteria for that pathway. To discuss your child's pathway, please call the Short Breaks team on 020 8583 3636.

# May half term 2025 activities



## Key to services

Throughout the following pages, we have used symbols to help abbreviate information about the Pathway, referral route, age and level of supervision for individual services.

The symbols are as follows:

### Pathways



The Pathway, will always be 1, 2 or 3 or a combination.

### Referral route



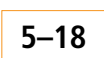
Self referral



Referral by professional

The referral route is either via self referral or referral by a professional who knows the child/young person, e.g. social worker, teacher, health professional.

### Age



Age is simply given as a range of numbers.

### Supervision



Parent supervision required



No supervision required

These symbols indicate whether supervision is required or if a child can attend a service on their own. Both symbols may appear if you need to speak to the provider about this.

In order to book a place at any of the **Watermans activities**, you will need a **promo code** as well as your **child's UIN**, which will be emailed to you by the **Short Breaks team** before the bookings open.

## 3 Little Pig Tails

by **Garlic Theatre**

A family puppet show for families, best for age 3+

**Tuesday 27 May 2025**

**11am (finishes at 12pm)**



The theatre performance will be at the Endeavour Theatre, West Thames College, London Road, Isleworth, London TW7 4HS.

An intimate theatre experience for children with beautiful puppets and set, live accordion music, singing and joining in. Wonderfully organic, funny and entertaining for all ages.



*'Let me in little piggie it's blowing a gale Not by the hairs on my little pink tail'*

A fresh and funny version of the classic story of the three little pigs set in Paris. A grumpy old wolf is a chef who wants some pigs' tails for his soup. Will the little piggies outwit the wolf and what kind of house will they build? A funny, warm-hearted and rustic tale to make you squeal with laughter, bristling with puppets, live music and lots of joining in!

Garlic Theatre entertain the whole family with beautifully crafted puppets, music and a garlicky French twist to the tale

The audience will experience a frisson of fear as the wolf prowls around the countryside and enjoy helping the pigs build incredible houses with singing and joining in. The 3 little pigs, Florence, Charlie and Claude, charm everyone as they outwit the wolf in a hair raising and exciting climax...

At the end of the show, you can meet the puppets and the performer.

Please book online at: <https://watermans.ticketsolve.com/shows/873654785/events>



## Access & facilities at West Thames College



The address is West Thames College, London Road, Isleworth, London TW7 4HS.

The College is close to the corner of London Road (the A315) and Spring Grove Road (next door to Isleworth Fire Station).

The Theatre is inside the main College building. It can be accessed through the main entrance at the front of the building on London Road, or at the rear of the building from the car park.

Different levels of the building are accessible by lift. There are toilets, including accessible toilets.

The Theatre has wheelchair spaces and the building is fully accessible to wheelchair users.

There is a large car park which is accessed from Harvard Road, which runs along the side of the College. From the car park, use the entrance at the rear of the College building.

On public transport, the College is 5 minutes walk from Isleworth train station.

Buses 117, 235, 237, E8 and H37 stop outside the College.

When arriving by public transport, use the main entrance at the front of the College building.

# May half term 2025 activities

## Frozen Light Theatre

### The Bar at the Edge of Time

A multi-sensory movie to experience at home



The glasses are polished, the lights are down low, and time will be hopping. *The Bar at the Edge of Time* waits only for you, so what are you waiting for?

Leave the hours, minutes, and seconds behind, step across the threshold and meet the bar's maestro mixologists, crooners and hosts. But a mystery lies at the heart of this place, a mystery hidden even from them. One that can only be solved when we spend our time together.

This is an at-home immersive box and a full-length film, carefully crafted to guide you through this extraordinary journey.

But it's not just a film - it's an experience you can watch over and over again. With scents, textures, and tastes included in the box, every element of *The Bar at the Edge of Time* is designed to engage and stimulate, creating an intimate connection to the story. The film takes you on a sensory adventure, where the sights, smells and sounds of the show invite you to explore the story in new ways.

Time stands still, memories are made, and the cocktails come to you. **Order your box** and immerse yourself in the unforgettable world of *The Bar at the Edge of Time*.

The Bar at the Edge of Time is designed specifically for audiences with profound and multiple learning disabilities. It is recommended for young people agreed 12+.

### What's inside the box?

- **Sensory Items:** Carefully selected scents, textures, and tastes that bring the performance to life. Each box includes a mocktail.
- **Instructions:** Easy-to-follow guidance to ensure you get the most out of every sensory element.
- **Film Access:** A link to watch the full-length film, guiding you through each moment of the show.

When you order the box on Watermans' website, as you would normally for an activity, please make sure that your Watermans' account includes your postal address. We will then send the box to your address by post.

Please order at: <https://watermans.ticketsolve.com/shows/873653087/events>

You only need to order 1 box per household.



### HOW TO BOOK

Please book separately for each activity.

Please remember to book 1 ticket for each person attending the films.

Please don't book extra tickets that you may not need, as this means that other people will not be able to attend.

If you need further information about the activities, or support with the online booking process on our website, please email us at [info@watermans.org.uk](mailto:info@watermans.org.uk) and one of the Watermans team will respond as soon as possible.

## Brentford Sports

### Multi Sports sessions

(including Football, Dodgeball, Badminton, Table Tennis, Basketball and adapted sports such as boccia and indoor curling).



Friday 30 May (10am to 2pm)

### Springwest Academy

(indoor sports hall)  
Browells Lane, Feltham TW13 7EF

For more information or to book a space, please contact Chris Tribe on [shortbreaks@brentfordfcst.com](mailto:shortbreaks@brentfordfcst.com)



### Outdoor Kayaking (Katacanoe boats)

### Brentford Lock/Canal

(meeting place - 8 Bradshaw Yard, Brentford, TW8 8GH)

Wednesday 28 May  
(4 – 6pm)



Thursday 29 May (4 – 6pm)

Please note:

- We would strongly encourage families to book **two spaces per session** (the Short Breaks participant, plus an older sibling or parent). All participants must be ages 7 or above.
- At the time of booking, please indicate whether you would like to book **one or two spaces**.

For more information or to book a space, please contact Chris Tribe on [shortbreaks@brentfordfcst.com](mailto:shortbreaks@brentfordfcst.com)



Community Sports Trust

### Programmes specifically for deaf and hard of hearing children

Brentford FCCST will be running a number of exciting new Sports Activity programmes for deaf children and their families during the half-term holiday. Activities will be confirmed nearer the time

For further details, please contact Ben Lampert on [blampert@brentfordfcst.com](mailto:blampert@brentfordfcst.com) or 07842 479295 (Text only).



### Feltham Bees Football/Craft Camp Springwest Academy

Browells Lane, Feltham TW13 7EF

Feltham Bees will be running a Soccer/Arts + Crafts Camp in the half-term holiday:

Tuesday 27 May – Thursday 29 May  
(10am–3pm)



All budding Harry Kane's are welcome - football coaching will be undertaken by FA qualified staff. Alongside the soccer camp, Feltham Bees are also running an Arts & Crafts session.

Young people should bring a packed lunch and a drink/s.

Please note this session is for the young person registered with Short Breaks. Siblings are not able to attend.

For more information or to book a space, please contact Lynn Keppel on 07956 671354 or Dean Heffer on 07825 212715.





# May half term 2025 activities

## Brentford Fountain Leisure Centre – NO NEED TO BOOK!

You will need to bring your child's UIN with you and book in with us when you get to the leisure centre before you go into the pool.

Depending on how many families come along, we may have to manage how many are in the pool at any one time so please bear with us and the Lampton Leisure team on the day.

### Family Swim – Drop-In Session

An exclusive Short Breaks swimming sessions at Brentford Fountain Leisure Centre has been arranged for:

#### Wednesday 28 May

Time: 9–11.30am

Please note that all children must be supervised in the pool – Brentford's Pool Admissions Policy is a ratio of one adult to two children under the age of 8. If you are bringing more than two children under the age of 8, there must be two adults in the pool with them.

**Brentford Fountain Leisure Centre**  
658 Chiswick High Road, Brentford  
TW8 0HJ

To find out more information please ring the Short Breaks team on 020 8583 3636 or e-mail: [shortbreaks@hounslow.gov.uk](mailto:shortbreaks@hounslow.gov.uk).



### Pool Party – Drop In Session

Come and join us for a dip and a dance!  
A pool party has been organised for:

#### Friday 30 May

Time: 5–7pm

Please note that all children must be supervised in the pool – Brentford's Pool Admissions Policy is a ratio of one adult to two children under the age of 8. If you are bringing more than two children under the age of 8, there must be two adults in the pool with them.

**Brentford Fountain Leisure Centre**  
658 Chiswick High Road, Brentford  
TW8 0HJ

To find out more information please ring the Short Breaks team on 020 8583 3636 or e-mail: [shortbreaks@hounslow.gov.uk](mailto:shortbreaks@hounslow.gov.uk)



## Horse Riding – Park Lane Stables

### Families can book one session

Come and meet the horses at Park Lane Stables for a session that will give the young people a chance to meet the horses, learn about grooming the animals and a chance to have a ride. There are 3 young people in each session. Please note that there is a weight limit of 12 stones.



Park Lane Stables are now back in their new 'old' home in Teddington – please see below for the new address details. We are also changing the format of the sessions as they are in a smaller space so the lessons will now be an hour with three riders.

### Sessions during the holidays are:

**Tuesday 27 May** 11am–12pm, 12pm–1pm

**Thursday 29 May** 11am–12pm, 12pm–1pm

**Friday 30 May** 11am–12pm, 12pm–1pm, 2pm–3pm, 3pm–4pm

**Sunday 1 June** 11am–12pm, 12pm–1pm, 1pm–2pm, 2pm–3pm

Please note the new address for the horse riding sessions:

### Park Lane Stables

Park Lane, Teddington TW11 0HY

Please note closed shoes/boots should be worn – sandals are not safe footwear for horse riding or being in the stables. This includes parent/carers as well as the young people.

To book a place, please call Short Breaks on 020 8583 3636 or email [shortbreaks@hounslow.gov.uk](mailto:shortbreaks@hounslow.gov.uk).



## Lampton Leisure – Swimming Lessons

### Hanworth Airparks

Uxbridge Road, Hanworth TW13 5EG

#### Tuesday 27 and Friday 30 May

Available time slots: - 1.15pm–2pm and 2.15pm–3pm

### Heston Pools & Fitness

New Heston Road, Hounslow TW5 0LW

#### Wednesday 28 and Thursday 29 May

Available time slots: 1.15pm–2pm and 2.15pm–3pm

**Please note there is a very high demand for the lessons - the team will aim to offer more than one lesson (if that is indicated), but please understand this may not be possible.**

Please note all swimming lesson timings include a 30 minute lesson for each child, followed by 15 minutes of fun free time supervised by the instructors.



To register your interest in the swimming lessons, please email the pool that you would like to attend on the following email addresses:

**Hanworth:** Diana Bala

[Diana.Bala@lamptongroup.co.uk](mailto:Diana.Bala@lamptongroup.co.uk)

**Heston:** Emyr Ben Youssef

[EmyrBen.Youssef@lamptongroup.co.uk](mailto:EmyrBen.Youssef@lamptongroup.co.uk)

- **Pathway 3** families should register their interest by **Friday 10 May**
- **Pathway 2** families should register their interest by **Tuesday 13 May** and
- **Pathway 1** families by **Friday 16 May**.

You will be put on a wait list and after the closing date for your pathway, you will then be directly contacted by Lampton Leisure to book the lessons in.



# May half term 2025 activities

## Redlees and Reflections Play Centres

## May Half Term Drop-In Sessions

Redlees and Reflections will be open over May half term for drop-in sessions as below:

	Redlees	Reflections
Tuesday 27 May	9.30am-12.30pm	1pm-4pm
Wednesday 28 May	9.30am-12.30pm	1pm-4pm
Thursday 29 May	9.30am-12.30pm	1pm-4pm
Friday 30 May	9.30am-12.30pm	1pm-4pm

Families **do not** need to book the sessions at Redlees and Reflections - these are drop-in sessions. **Please bring your child's UIN with you.**

## Sunday Sessions Drop-In – 10am – 2pm

Families **do not** need to book the sessions at Redlees and Reflections on a Sunday - these are drop-in sessions. **Please bring your child's UIN with you.**

See below dates for the Sunday sessions at the Redlees and Reflections play centres up to the end of May 2025:

May 2025	
4 May	CLOSED
11 May	Reflections
18 May	Redlees
25 May	CLOSED

June 2025	
1 June	Redlees
8 June	Reflections
15 June	Redlees
22 June	Reflections
29 June	Redlees


**For those that are new to Short Breaks, Redlees and Reflections are two play centres in the borough that have been adapted for children with disabilities with adapted play equipment, sensory rooms etc.**

**Both venues are safe and secure. Family groups are welcome.**

Please note that Play team staff have the right to refuse entry should numbers within the centres reach their capacity.

## Redlees Play Centre

Located in Worton Road, Isleworth, TW7 7DW (the play centre is in the corner of the Redlees Park car park (accessed via Worton Road) which is next to the outdoor courts.



Look for a purple sign with 'Redlees Play Centre' – there is secure access so you will need to buzz the staff to let you in.

## Reflections Play Centre

c/o Hounslow  
Urban Farm, Faggs Road, Feltham TW14  
0LZ – the centre is next door to the  
entrance of the Urban Farm.



If you have any queries, please call 020 8583 3636 or email [shortbreaks@hounslow.gov.uk](mailto:shortbreaks@hounslow.gov.uk)



## Exciting Opportunities for Young People at Our Barn Community!

**Are you a parent or carer of a young person (16-35) with additional needs, autism or learning disabilities? Looking for a safe, inclusive space where they can make friends, develop skills, and have fun?**



## Join Our Barn Community in Hounslow!

- A welcoming, supportive environment
- Fun activities – games, social events, creative projects & more!
- Skill-building to boost confidence & independence
- A chance to connect with others in the community

**Give your young person a place to thrive!**

Contact us today to find out more!

**David Roughan** - *Youth Leader*

**Our Barn Youth Club**  
Redlees Play Centre  
every Sunday, 3pm-6pm  
for 16-25 year olds,  
funded by Short Breaks.

**What 3 Words:**  
monkey.excuse.badge

**07484 326108**

**www.ourbarn.org.uk**

**www.communitycomet.co.uk**

# Decisions R Us

**Bid for up to £250 for a short break or activity!!**

**Please note that applications to Decisions R Us can be made every other financial year. So, for example if you apply in this financial year, ie. from 1 April 2025 to 31 March 2026, you will have to wait until after 1 April 2027 to apply again. If you have any queries, please call on the Short Breaks team on 020 8583 3636.**

Last year young people in Hounslow were given the opportunity to apply for funding for their own 'personalised' short break activity. These included horse riding, swimming lessons, gymnastic classes, even rock climbing...

Once again, funds have been allocated to young people on pathway 1 and 2, aged 5 up to 18, living in Hounslow who are looking for help with a short break or activity. This can include equipment that will help them access a short break! Young people and parent/carers on their behalf can bid for up to £250 to fund their own short breaks.

The activity needs to be positive and enjoyable, that gets the young person out and about in the community, hopefully developing a hobby or a skill. We are very flexible in what can be applied for as each child has their own interests but there are some no-nos:

- No electronic equipment including laptops, mobiles, gaming consoles
- No furniture or household items
- The only holiday that could be funded would be one for the young person themselves such as a PGL holiday or a residential with a youth club.
- No Merlin annual passes

The application form is available from the Short Breaks team or from the downloadable documents on the Short Breaks web page [www.hounslow.gov.uk/shortbreaks](http://www.hounslow.gov.uk/shortbreaks)

which ideally the young person will then need to complete (where possible) or with help from an adult. Young people can attach a picture, film, photo or other media to the application form if required to express or support their idea.

Applications will be then presented to the Decisions R Us Panel who will make a decision about each application.

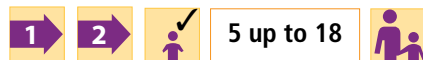
**If you have any queries, please call the Short Breaks team on 020 8583 3636.**

## Decisions R Us Panel Dates

**14 May 2025** – deadline for applications Friday 9 May

**10 September 2025** – deadline for applications Friday 5 September

**14 January 2026** – deadline for applications Friday 9 January



# Services Throughout The Year

## Music Therapy – Richmond Music Trust



Richmond Music Trust are offering a slightly adjusted programme to children and families offering both direct contact music therapy sessions and online sessions.

Our online music therapy programme during the summer has been very popular and we have received some lovely feedback from families, which showed clearly that music therapy via video link can really work well for some children. Therapists and parents have been amazed about how effective children can engage in online music therapy accessing one to one and group sessions. As we are still unable to use our usual premises at the Hub, we have decided to offer a mixed programme offering both **online sessions** as well as **direct contact** sessions.

### Online Music Therapy Programme on Saturdays

Sessions will be a little different but our therapist Sara Cole will create a fun and child-centred experience including shared musical activities, singing and games. These sessions will be uniquely tailored to your child's needs, choices and ability. We have vacancies for weekly one to one sessions and vacancies in weekly small group session.

Sessions will need to be attended jointly with a parent, carer or sibling so that your child is supported to maintain engagement. If you have musical instruments at home these can be used and the therapists will also provide you with ideas of how to use household items for sound production.

This programme is open to children from Pathway 2 & 3. We accept referrals from those that would like to try out this mode of engagement or continue on from the summer programme.



### How does it work?

All you need is a computer (PC or MAC), tablet or Ipad and a reasonably stable internet connection. You will need to install the free Zoom application and we will send you all the info of how to do this. **If you need any help, Joanna Dawson from Hounslow Short Breaks or Andreas Rosenboom from Richmond Music Trust are available to help if required.**

### Direct Contact Music Therapy Sessions on Saturdays at Richmond Music Trust, Twickenham, TW2 6RB

The Trust also offers sessions from their premises in Twickenham, TW2 6RB and therapist Muhamad Badry will be offering sessions on Saturdays between 10 and 4pm. We will adhere to social distancing and have a variety of measures in place to assure Covid Safety.

### How do I enrol?

Please contact us if you wish your child to access the music therapy programme, by emailing: [musictherapy@richmondmusictrust.org.uk](mailto:musictherapy@richmondmusictrust.org.uk)

Please let us know if you wish to access the online or the direct contact option.



# Services Throughout The Year

## Heathrow Gymnastics Club – Play Gym

This service is only available to children registered with Short Breaks up to the age of 7 and up to 130cm in height on pathways 2 and 3.



You can use this service throughout the year, not just in the holidays!

Please note that on arrival parents are required to fill in a registration sheet which will be asked for basic information about their disabled child, including their disability and UIN number. Short Breaks will only pay for the disabled child – any siblings or friends will need to be paid for by the parent/carer.

The play gym sessions are open to children on pathway 2 and 3 up to 7 years old or 130cm (4 feet, 2 inches). Brothers and sisters are welcome to attend but will need to be paid for by the family. Session times below.

There is no need to book the sessions but arrive promptly to make sure you can access the session.

**Heathrow Gymnastics Club**, Green Lane, Hounslow, Middlesex, TW4 6DH

To find out more information, please ring the Short Breaks team: **020 8583 3636** or email [shortbreaks@hounslow.gov.uk](mailto:shortbreaks@hounslow.gov.uk)

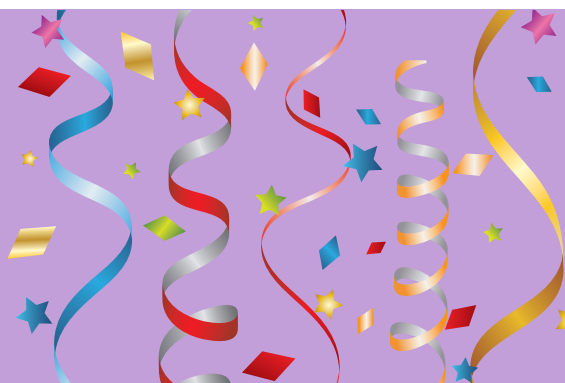


Monday - Friday	Saturday	Sunday
10am – 11am	9.30am – 10.30am	Closed
11am – 12pm	10.30am – 11.30pm	
12pm – 1pm		
1pm – 2pm		
2pm – 3pm		
3pm – 4pm		

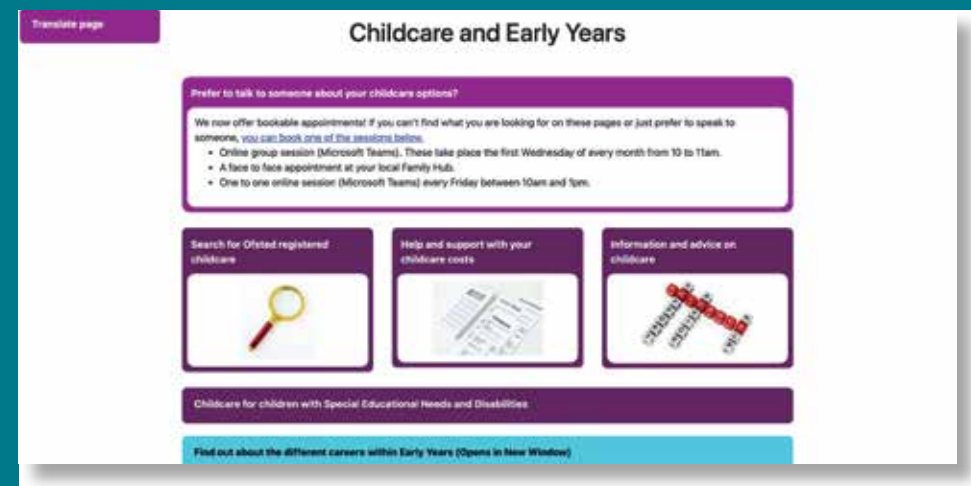
## Congratulations...

If you have any good news stories, let Short Breaks know and we will publish it in future newsletters.

Please call us on **020 8583 3636**.



# Childminding – 24 Hours Free Childminding Service



The Short Breaks Service will pay for an introductory 24 hours childminding free. This is an opportunity for you and the childminder to start building a long-term supportive relationship for your child.

A registered childminder is a person who looks after children in the childminder's own home.

Registered childminders are found on the Hounslow Family Services Directory at [www.hounslow.gov.uk/childcare](http://www.hounslow.gov.uk/childcare). Select the search for childminders button and choose your area. You will see a list of childminders and will need to click on each name to see their full profile.

Some childminders may have listed specific experience they have in caring for children with a particular special need/disability. From this information, it's advisable you then contact the childminder to see if they can accommodate your child's individual

needs along with the hours and days you are looking for.

Once you have found someone who meets your needs, call the Short Breaks team who will organise payment of the first 24 hours directly with the childminder. It will then be down to you to continue any ongoing payments with the childminder for further care.

- Your family/child must be registered with Short Breaks to use this service
- Your child must meet level of need pathway 2 or 3
- Once the 24 hours introductory offer is over, it is your responsibility to continue paying for the service.

For more information or to discuss organising your childminding, please call the Short Breaks team on **020 8583 3636**.







**Should you require this Newsletter  
in a format other than English please  
contact the Short Breaks team on  
020 8583 3636 or email:  
[shortbreaks@hounslow.gov.uk](mailto:shortbreaks@hounslow.gov.uk)**

**Children with Disabilities Social  
Work Team, Safeguarding and  
Specialist Services**

London Borough of Hounslow  
Hounslow House, 7 Bath Road,  
Hounslow TW3 3EB  
Telephone: 020 8583 3636

**[www.hounslow.gov.uk](http://www.hounslow.gov.uk)**

May 2025