

GREEN FLAG MANAGEMENT PLAN 2020-25

Thornbury Park

2020-25



**London Borough
of Hounslow**



**Friends of
Thornbury
Park**

Lampton
Services
Greenspace

Updated 2025



Foreword

The London Borough of Hounslow has some superb greenspaces that everyone can be proud of. They are places where people can relax, enjoy nature, play, or take part in cultural and historic activities and recreation. They are essential for the health and well-being of our residents, and they are vibrant spaces that provide a borough-wide green infrastructure for our communities.

In Hounslow, we are committed to stimulating a strong and robust green recovery related to our Greener Borough Framework and Climate Emergency. The Council's Green and Blue Infrastructure Strategy plays a key role in delivering the Greener Borough Framework and sets out key priorities for our greenspaces in areas such as health and wellbeing, regeneration, climate change and nature recovery.

The London Borough of Hounslow considers the Green Flag Award process as a tool towards positively developing our greenspaces within this strategic framework and in partnership with our communities. It contributes to providing a vision, with clear objectives and priorities for how the Council and its partners would like to see greenspaces managed in future years.

This plan is not only the commitment from the Council to improve our greenspaces but is an important recognition of the support and commitment of the friends of parks, community groups, local clubs, third sector and partners who share our visions and work with us to respond to our green agenda.

Acknowledgements

This plan has been produced by Lampton Services Greenspace* (GS) and the London Borough of Hounslow (LBH) Parks Team with input from Thornbury Park Friends CIC. In addition, it is important to acknowledge the great contribution from all interested groups for their commitment and dedication in supporting the development, promotion, and management of Thornbury Park.

*Lampton Services Greenspace (GS) is part of the Lampton Limited Group and is a company wholly owned by London Borough of Hounslow with an aim of returning value to the Council representing a bold new ambitious approach.





Contents

<i>Foreword</i>	1
<i>Acknowledgements</i>	1
<i>Purpose of the Plan</i>	3
<i>Where are we now?</i>	4
Site Description and facilities	5
Detailed History	6
SWOT Analysis	10
<i>How do we get there?</i>	11
Vision & Objectives	11
Meeting the Green Flag Award Criteria	12
A Welcoming Place	13
Healthy, Safe & Secure	13
Well Maintained & Clean	15
Biodiversity & Heritage	21
Ecological Survey 2023	22
Community Involvement	23
Marketing	24
<i>How do we know we have arrived?</i>	26
<i>Appendix 1- Action Plan</i>	27
<i>Appendix 2- GS Works Programme</i>	29
<i>Appendix 3-Management Structure & Responsibilities</i>	31





Purpose of the Plan

The Management Plan for Thornbury Park has been prepared by LBH and Lampton Services Greenspace with input from Thornbury Park Friends CIC. The plan is specifically developed for the individual site with a dedicated Green Flag Action Plan.

This plan has been developed following detailed assessment of the Green Flag Award criteria and a comprehensive collaborative review of the existing uses, management, and maintenance of Thornbury Park.

As part of the development of the plan, detailed consultation has taken place with the Lampton Greenspace parks maintenance and management team, LBH officers and the Friends group.

The Management plan is a 'working document' that brings together all the information relating to Thornbury Park and will be updated, revised, and annually reviewed.

This plan has been developed based on the Commission for Architecture and the Built Environment (CABE) Space document *"A Guide to Producing Park and Greenspace Management Plans"* and the *"Green Flag Award Guidance Manual"* guidelines.

Policy & Strategic Context

Actions and aims within this management plan are both guided by, and relate back, to wider Council strategies. The development of parks and open spaces are a vital component of the Council's Corporate Plan 2022 – 2026. Our work during this period is focused on six priority ambitions for a borough that is greener, healthier, cleaner, thriving, safer, and liveable. Green infrastructure contributes in many ways to helping us achieve these priorities.

A key approach of Hounslow Council is working under the concept of "One Hounslow" where services are delivered without silos, working for specific outcomes with several internal council departments, community groups, NGOs, and government bodies.

Parks and open spaces play an important role in the approach highlighted in the Council's Joint Health and Wellbeing Strategy with start, live and age well, preventing ill-health, which in turn has an impact on reducing costs within the wider economy, the Council, and the NHS.

The Council's Equalities and Diversity Strategy 2023, created to improve equality, diversity, and inclusion - sets out an ambitious approach to target policies and funding to the areas which need them most to thrive. The strategy is based on three pillars - Equality by Place, Equality by Group, and Equality as Employer. Hounslow Council has committed to transform the opportunities and life-chances of communities in the borough's 30 most disadvantaged neighbourhoods.

The Council approved the Greener Borough Framework 2020-30 which seeks to provide a high-level framework to deliver on the Council's ambition and aspirations for the borough through enhancing our environment and reducing our use of resources. The framework is part of a wider ambitious green agenda bringing different people and organisations together to discover, engage, innovate, and deliver.





The adoption of the Green and Blue Infrastructure Strategy and Nature Recovery Plan are the pillar of the strategic framework for the development of our parks and open spaces and their management plans through the Green Flag Award process.

Useful Links:

- [Corporate Plan 2022-26](#)
- [Climate Emergency](#)
- [Green Infrastructure Strategy](#)
- [Greener Borough Framework](#)
- [Nature Recovery Action Plan](#)
- [Equalities and Diversity Strategy](#)

Parks Funding

The Council's Parks service is funded by an annual salary and contract revenue budget for base line ground maintenance activities, and provided by our service providers, Lampton Services Greenspace, to maintain all of Hounslow's parks and open spaces, including allotments, cemeteries, trees, countryside and other workstreams.

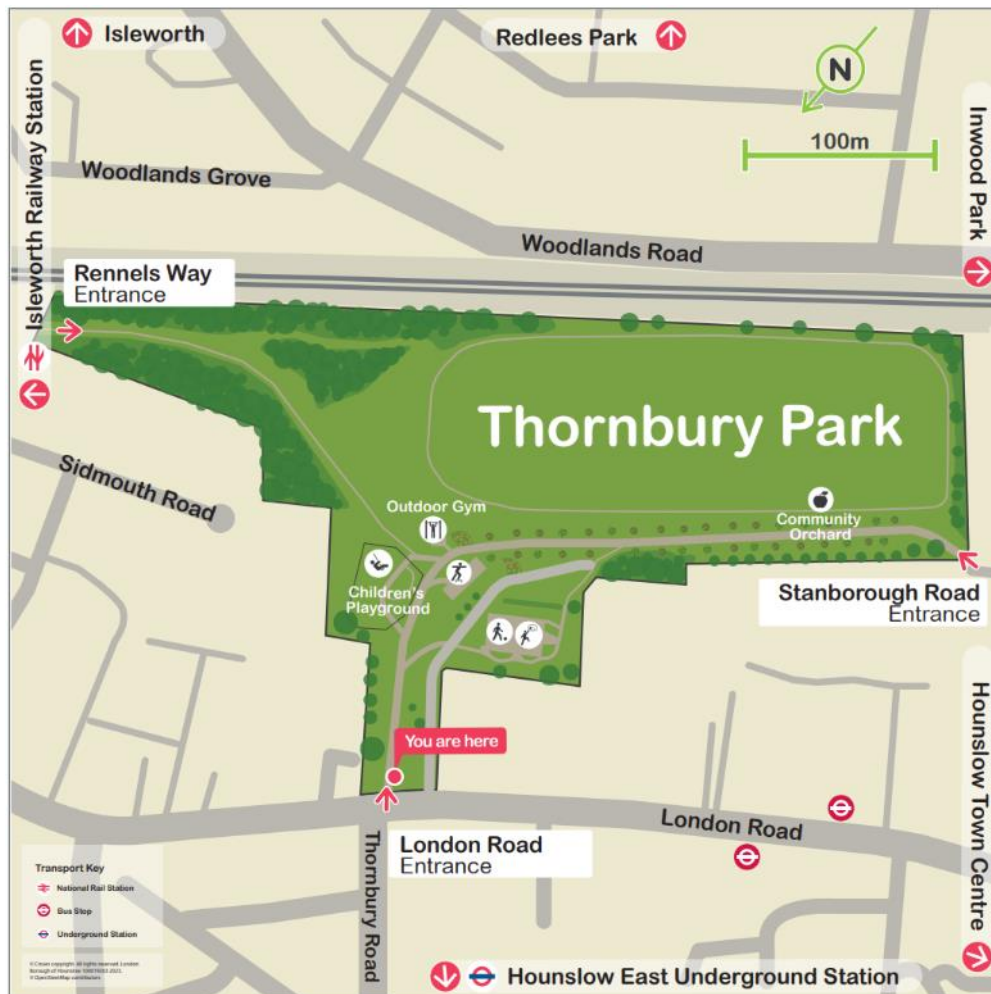
Current capital funding has been allocated through a parks improvement project, and sites which require improvement will be prioritised. This funding will cover 2 years of project delivery and staff resourcing 2023 – 2025. Other capital funding is obtained via Community Infrastructure Levy (CIL); S106, the Council's Thriving Communities fund (local CIL) and other grants and initiatives. These are applied for annually or as necessary and are based on need and strategic investment required by both the Council and local communities.



Where are we now?

Site Description & Facilities

Thornbury Park is a large local park in Isleworth of 5.94ha on the southern side of London Road. The park has a small frontage on London Road but is otherwise landlocked; pedestrian access can be gained from London Road, Stanborough Estate and Rennels Way business area. The park is largely an open space, with some woodland areas and mature trees on boundaries. There is a playground, skate ramp, basketball Court, Outdoor Gym, and Community Orchard. The Friends have a notice board outside the London Road entrance.



Site Information

Name: Thornbury Park

Contacts: 020 8583 5555

Web: www.hounslow.gov.uk

Designation: Open Space

Size: 5.94ha

Byelaws: A copy can be downloaded at www.hounslow.gov.uk

Access: open access at all times

Transport: **Train:** Isleworth Station

Tube: Hounslow East

Buses: 110/117/235/237/H8/H37

Parking: Street parking- pay and display

Local Facilities Play area, basketball court, skate ramp, outdoor gym, community orchard.

Address: London Road, Isleworth, TW7 4ER

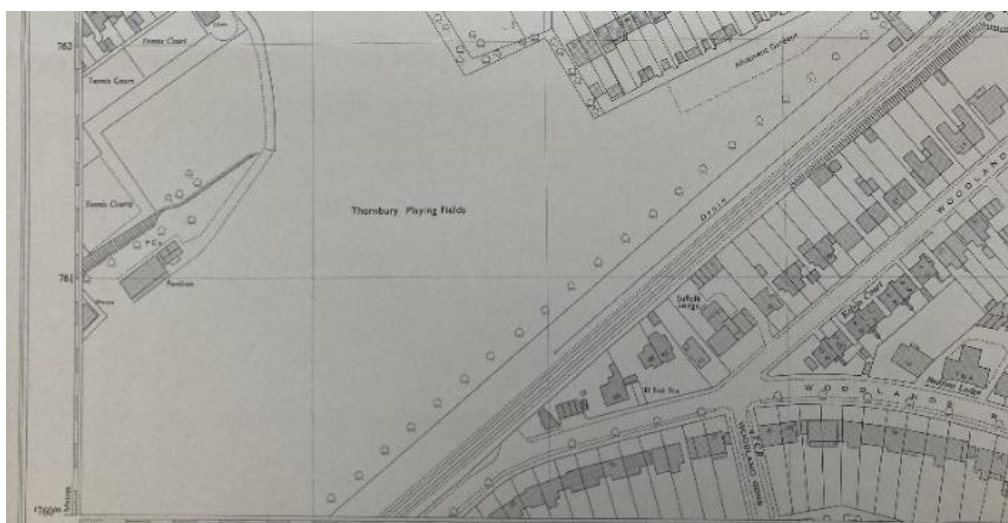
Email: parks@hounslow.gov.uk

Ownership: London Borough of Hounslow

Detailed History

Previously a gravel pit, the site opened as a park in 1940, marking the end of the Heston and Isleworth Council's programme of suburban embarkment throughout the 1930s. The aim of the programme was to preserve public open space and provide facilities for sport and recreation within a district that was growing very rapidly, doubling its population in little more than a decade during the inter-war years.

Thornbury playing fields was originally developed as a residential space for cricket and football which were very well used. Unfortunately, due to the ground conditions wearing very badly and all the landfill rising to the surface the playing pitches were taken out of commission. For many years there was also an active tennis club with courts next to it, this is also now unused land and privately owned.



'A Hard Day's Night' Film by the Beatles. Back in 1964 the Beatles filmed parts of their movie at Thornbury Playing Fields. A fake helipad was constructed on the area that later became the playground we now have.



Source of photo: [Filming: A Hard Day's Night | The Beatles Bible](#)



There was a BMX track created in 1983 in response to the local community at a time when BMX bike racing was at its prime. The management was through a local voluntary group who maintained and organised events, which proved to be very successful for several years, the BMX Grand Prix were subsequently held there until at least 1986. The difficulties for all such organisations came with a gradual decline in popularity of the sport which led to a space vulnerable to informal use, which in turn led to improper care and the ground starting to collapse due to being built over an air raid shelter, this area was deemed as no longer safe and in order to preserve the historical feature the track was taken away and the Air raid shelter was backfilled and is still there to this day.

A multi-use sports pavilion was also on site which was demolished early 2000s due to being damaged beyond repair. This space was replaced with the current playground and a skateboard ramp was also commissioned further inside the park.

This site was also one of the prime sites used for the Council's Green strategy initiative from 1988 to early 1990s, with community woodland techniques used this form of planting has continued in some areas.

Around 2005, a renovation scheme was reported which involved planting trees and re-surfacing the playing fields, the proposal led to a name change and subsequently Thornbury Playing fields became Thornbury Park an amenity open space.





Recent Developments

Aspirations 2025

Tackling Anti-Social Behaviour

Thornbury Park has a legacy reputation for ASB. To address this Thornbury Park Friends CIC working in partnership with LBH Parks and GS are pursuing a strategy to eliminate ASB from the park. The first stage, which involves removal of hiding places, will be completed by the end of 2024. GS and LBH have installed fencing around the former tennis club land adjoining the north west corner of the Park. GS have undertaken extensive woodland management at the north end of the park and in Rennels Way pathway entrance to reduce dense undergrowth, raise the tree canopy, and create clear sight lines among the remaining mature trees.

In 2025 the aspiration is to increase the number of people using the park by reducing the areas for potential ASB to take place and creating a connected path network which encourages more circulation within the park. This will encourage positive and active use of the park, thereby reducing opportunities for crime and nuisance.

Thornbury Park Friends CIC are also in discussion with LBH regarding additional community seating and facilities. Furthermore, ideas are developing regarding further physical activation on the site including football, cricket, table tennis and skate/wheeled provision. Community aspirations for the site also include community events, birthday parties, after-school playground events.

Achievements 2024

- Skate Park repair proposal developed by Greenspace and Friends CIC
- Creation and delivery of an active volunteer work programme.
- Installation of a major SUDS system
- Thinning of vegetation to reduce opportunity of ASB hiding places in Rennels Way entry path.
- Install secure fencing around former tennis club land.
- Rennels Way entrance proposal developed in collaboration with Thornbury Park Friends CIC

Achievements 2023

- Installation of new signage
- Progress made on redevelopment of Rennels Way
- TCV Volunteering Programme run from end of 2022 through to July 2023, resulting in the installation of dead hedging and the reduction of undergrowth on eastern side of site.
- New orchard planting installed January 2023, extending orchard towards skate park.

Achievements 2022

- Launch of partnership with TCV Green Gym, including installation of storage container facility
- Extension of community orchard in Winter 2022 with 8 additional trees
- Friends of Thornbury Park incorporated as a CIC to progress programme of works expanding the park.
- Friends group sign moved to outside London Road entrance to protect against vandalism, promote visibility from the road.





Achievements 2021

- New circular gravel track and link path to Rennels way road installed Autumn 2021 funded by S106 to enable circulation, opportunity for exercise and connectivity to entrances.
- Successful partnership bid with TCV for 1-year Green Gym within the Park
- Thames Water Drinking Fountain installed outside of Park.
- A wildflower strip was planted in 2021.



Achievements 2020

- Native hedge row planted parallel to railway line.
- Exterior Park lettering repainted.
- Additional £20,000 of S106 funding received towards Rennels Way entry improvements.

Previous Achievements

- Outdoor Gym – 2016/17
- Community Orchard
- Disease resistant Elm trees planted
- Upgraded playground.
- Friends Notice board.
- Access gate improvements to prevent scooters.
- Tree planting and bulb planting with a local school
- Shrub and woodland reduction to increase views across the park.





SWOT Analysis

A SWOT analysis is a management critique to identify Strengths, Weaknesses, Opportunities and Threats to help shape future improvements.

STRENGTHS <ul style="list-style-type: none">• Well used popular fenced playground area.• Basketball court, Skate ramp, Outdoor gym• Community orchard• Active Friends Group with own Notice board• Improved visibility through the park• Local Primary school involvement• Relationship with West London College• Large grassland area within a densely urban area• Circular gravel track for walking and running around park and link path to Rennels Way• Thames Water Drinking Water Fountain outside of park• Proximity to Isleworth overground station	WEAKNESSES <ul style="list-style-type: none">• Rennels Way entrance requires resurfacing / improvements to deter anti-social behaviour.• Anti-Social Behaviour (ASB)• Informal sports could be encouraged on the main field.• Limited provision for older children• High usage in summer months leading to overwhelmed litter provision
OPPORTUNITIES <ul style="list-style-type: none">• Community events• Tree and hedge planting• Wildflower strip• Football Posts• Non-turf Cricket wicket• Resurfacing skate ramp• Provide picnic tables• Provide benches in shaded areas• Review litter bin provision• Link walking track to original tarmac paths	THREATS <ul style="list-style-type: none">• Anti-social behaviour• Climate change/ disease/drought/pests and invasives• Increase in litter in warmer months



How do we get there?

Vision & Objectives

Vision for Thornbury Park:

“Thornbury Park Friends CIC, the London Borough of Hounslow and Lampton Services Greenspace will work together to create and maintain an exemplary centre for community involvement and enjoyment which is wildlife friendly, sustainable, resilient to climate change, and safe and accessible to all.”

Key objectives for Thornbury Park are:

- To continue to work closely with the Friends group and users of the facilities so to adequately maintain and improve the facilities.
- To ensure that Thornbury Park is a place that is secure, safe to use and is clean and well maintained.
- To ensure that the management of the landscape maintains the heritage character of the park.
- To ensure that the park is promoted and managed to provide a high-quality service for the people using it.
- To continue to encourage and promote community involvement in the management of the park.
- To ensure that the management of the park protects and enhances the biodiversity of the site and borough.
- Provide and improve opportunities for good health and well-being.
- Create opportunities for connecting green spaces for wildlife and increasing the boroughs ecological resilience and connectivity

Meeting the Green Flag Award Criteria



Management of Thornbury Park

This sets out guidelines and general principles to be followed in delivering the vision and objectives outlined above.

Management of the open space needs to deliver high standards of maintenance of the soft and hard landscaping of Thornbury Park within existing revenue budgets and through capital infrastructure funding opportunities.

Delivery Partners

The Council works pro-actively with the Thornbury Park Friends in consulting with local people regarding their views of the facilities and any impact that is made on their lives. Continuing this relationship is a very high priority for the management of the open space.

GS are responsible for maintaining all the parks and open spaces within the LBH Parks Service. Maintenance is carried out by the contractors' operatives who have the necessary skills to achieve high and consistent horticultural standards. We also work with environmental volunteering groups, such as the Environmental Champions and others, see the "Community Involvement" section below for more information.

The Friends organise monthly work parties from March to October carrying out a plan of work approved by the Parks department, with appropriate risk assessment, plus litter picking and removal of dog mess.



A Welcoming Place

The following management regimes all play a part in ensuring that Thornbury Park continues to be a welcoming area.

Graffiti Removal

As a part of our aim to make the borough safe, green, and clean we are committed to reducing and removing graffiti. The site will be regularly inspected for graffiti. All graffiti will be removed within 7 days of notification, where the graffiti is racist or offensive it will be removed within 24 hours of notification.

Signage

Park signage will be kept clean and is regularly inspected, any repairs will be carried out promptly. For more information, please refer to the “Marketing Section” below.

Pathways

All paths and hard surfaces will be inspected annually. Any necessary repairs will be reviewed, and funding opportunities explored with the aim of rectification as soon possible.

Visibility

Vegetation will be reduced so that where possible site lines are achieved across the site.

Healthy, Safe & Secure

The following management regimes all play a part in ensuring that Thornbury Park continues to be a healthy, safe, and secure place

Health & Wellbeing

We recognise the benefits that our green spaces can make to the health of our residents.

We are committed to developing active environments that enhance leisure, sport, physical activity and play opportunities in priority areas.

The Councils [Playing Pitch Strategy](#) in particular, identifies needs for sports facility improvements and sets out priority projects for delivery in partnership with key stakeholders. We work with Council services to ensure that our approach supports the broader Council strategies around health and wellbeing and together with Active Travel team, Leisure Services, Transport, Public Health, Community Development team and the local community we aim to deliver these improvements.

Useful Links:

- [Health and Wellbeing Strategy 2023-26](#)
- [Data Hub](#)





Healthy Hounslow

Healthy Hounslow is a partnership between several organisations supporting people in leading healthier lifestyles; to become more active, eat well and stop smoking. The partners that make up Healthy Hounslow are Hounslow Council, West London Trust, Feltham & Bedfont Primary Care Network, MoreLife, Maximus/BeeZee and Lampton Leisure. The services and support offered by Healthy Hounslow are: Smoking cessation, Health and wellbeing coaching, Healthy weight management, Exercise on referral, Cook and eat sessions, and Community NHS Health Checks.

You can find out all about Healthy Hounslow at our website www.healthyhounslow.co.uk

Move More Hounslow Activity Map

- Available online to be [here](#).
- Map shows most parks in the borough that have a multitude of free activities available.



Site Safety

All GS staff and contractors play an important role in terms of a visible staff presence. All are uniformed and where necessary will wear highly visible clothing. All works will have been risk assessed to ensure the highest level of public safety.

Control of Dogs

Most dog owners act responsibly and keep their pets under control. However, the council continues to receive comments and complaints from residents about the behaviour of some dogs and irresponsible dog owners within parks and open spaces.

In response to this, the council is holding a public consultation process to gather residents' opinions about a variety of dog control related issues. The feedback will help us decide whether to introduce a dog control public space protection order (PSPO).





PSPOs are aimed at ensuring public spaces can be enjoyed free from anti-social behaviour. They are not about stopping the responsible use of public spaces - but they do provide councils with a tool to tackle persistent issues that are damaging their communities. For more information on the status and findings from the dog PSPO consultation please see the webpage [here](#).

Thornbury Park welcomes responsible dog owners. The fenced play area is already a dog exclusion zone, and this has been reflected in the PSPO consultation.

Community Safety

Hounslow Community Safety Partnership (HCSP) is responsible for reducing crime, disorder, and substance misuse in the London Borough of Hounslow. Along with other supporting partners, HCSP brings together key local agencies including:

- London Borough of Hounslow – Safer Communities Team
- Metropolitan Police Service (Hounslow Division)
- Hounslow district of the National Probation Service
- Hounslow NHS Trust
- London Fire and Emergency Planning Authority
- www.hounslow.gov.uk/community-safety

The Council's Enforcement Team have responsibility for overseeing Community Safety in the boroughs' parks and open spaces. They walk through parks to show presence and work with the Parks Team and GS to target regular occurrences of ASB. Occasionally a joint task force operation including those above is required i.e., rough sleeping, food dumping, drinking and drug misuse.

In 2024, Hounslow Council established a Violence Against Women and Girls (VAWG) Steering Group focused on addressing VAWG issues in parks and open spaces. This group identifies short term and long term strategies and opportunities for partnership development. Key approaches include clearing sightlines, encouraging natural surveillance, and fostering a sense of ownership within these spaces through vegetation removal, raising tree canopies, encouraging volunteering in parks and organising police walk and talks. The team have also been working closely with:

- London Borough of Hounslow – Domestic Violence Reduction Unit
- London Borough of Hounslow – Rough Sleepers Unit

Additionally, they contribute to the WA – BCU (West Area – Borough Command Unit) meetings, which include boroughs of Hounslow, Hillingdon and Ealing.

Well Maintained & Clean

The following regimes are designed to ensure that Thornbury Park is clean and well maintained:

Grass Maintenance

GS employ several different management approaches to maintain grass areas within our parks and open spaces. Generally, grass areas are managed either as amenity grassland, rough grassland, or as wildflower meadow. Within many of our larger parks, the grass is left uncut as part of the annual No Mow May campaign which was also referred to as [Hounslow's Natural Summer](#) in 2024. For more information see the Council's webpage [here](#).





Amenity Grassland

Amenity grassland consists of areas used for general recreation, and formal and informal sports, and can include wide-open spaces or those areas planted with trees and shrubs. These areas are regularly cut during the growing season, to ensure they can continue to be used for recreation throughout the year (see Annual Maintenance Work Schedule). Grass edges, whether they are against paths, fences or walls will be cut at the same time as the rest of the grass using strimmers in most areas. Special care will be taken with strimmers around young trees in the community orchard and the grass around them will be regularly mown in the early spring after volunteers have weeded and mulched the trees.

Thornbury Park consists mainly of amenity grassland. There is also a wildflower meadow area in the southwest of the open space, visible from the perimeter path.

Wildflower Meadows

Wildflower meadows are areas which are actively managed and promoted as wildlife areas. They are suitably prepared, sown and protected by GS, to ensure they establish and flourish to help promote pollinators, and to increase the biodiversity within the open space. They are clearly marked out, with interpretation boards to help inform the public about the benefits of wildflower meadows and how they are managed.

Our meadows provide a rich floral display during spring and summer with plants including Ox-eye daisy, Common Birds-foot-trefoil, Black Knapweed, Field Scabious, and Yellow Rattle, though there is a change in the mix of species in flower through the months. These flowers are an important source for nectar feeding species.

As part of the council's commitment to invest in green infrastructure, GS help identify additional areas within our parks and open spaces, which can be managed as wildflower meadow, where suitable and in consultation with the Friends CIC as necessary.

For more information about wildflower meadows and how we manage them, please see the Council webpages [here](#).

Bulb Planting

Bulbs at the entrance at London Road brighten arrival when in bloom. Where possible they are left until leaves turn yellow so that energy goes back into the bulb for next year's flower. There has been early community bulb planting in 2023.

Trees

Trees are an incredibly significant feature in the borough's parks and open spaces. They provide a variety of benefits not only to visitors but to the overall environment of an area, creating habitats and providing natural shade. They form an important part of the borough's green infrastructure, and this is reflected within the council's [Green Infrastructure Strategy](#).

Tree Maintenance

Trees within parks and open spaces are subject to inspection by suitably qualified and experienced GS Arboriculturists. This is to identify and remedy any unacceptable risks to people using the sites, or the removal of trees that are extensively decayed compromising their structural integrity. Tree pruning is only carried out where necessary for risk management purposes or where formative pruning is necessary; this approach allows Hounslow's parks to retain a natural landscape with well-formed specimens.





Hounslow Council works closely with Friends, Councillors and Lampton Services Greenspace tree team to consider the tree population within Thornbury Park to make improvements and ensure that there is continuity in the way that the trees are managed.

Tree Planting

Between 2020 and 2024 the Council set ambitious tree planting targets, successfully planting over 25,000 new trees and whips in parks and open spaces. This formed one of the main ongoing targets set out in the [Green Infrastructure Strategy](#).

A Community Orchard was planted in 2018 in partnership with Trees for Cities and over 100 volunteers. Many individual trees have been adopted by park users who weed and mulch their tree in the spring and bring water during periods of prolonged drought. This orchard provides a great habitat and will offer free fruit for any passerby. Also refers to Hounslow's Market Gardening past and the importance of having a communal food growing area.

For more information on tree planting locations and species, please see the Council webpages [here](#).



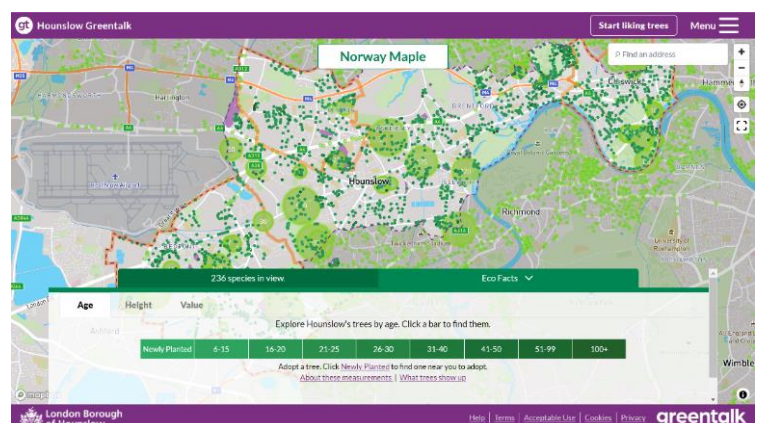
Greentalk

Hounslow Greentalk is an innovative new platform developed as a bespoke resource for Hounslow residents. It has lots of clever features to help explore public trees and make a positive difference to the environment. The platform provides a unique opportunity for Hounslow residents to adopt newly planted trees and help their borough become greener.

Anyone who wants to find out about trees in the borough can use the Greentalk interactive map to explore their area through a tree focused perspective.

Other features include but not limited to:

- Adopting a tree
- Watering notifications
- Green walks
- Tree giveaways





Over 120,000 trees have been mapped, and around 33,000 can be liked by registered users. Liked trees are saved as favourites and can be accessed through the user profile.

The data used to display all the information on Hounslow Greentalk is derived from the council's tree partners who manage the trees in the borough and regularly provide up-to-date information to keep the system as relevant as possible. If a resident is aware of a problem with a tree, Hounslow Greentalk can help them report the exact tree with the right information to the relevant tree partner. For more information, please visit [Hounslow Greentalk](#)

Wetland Management

Sustainable Urban Drainage Design

The Parks team work closely with the Flood Risk team, to help inform on Sustainable Urban Drainage (SUDs) features and design during parks development projects. This approach helps provide ecological and sustainable solutions, to help alleviate flooding within urban areas.

During 2024 a new SUDS feature has been installed at the London Road entrance of the park, a project collaboration between the Flood Risk and Parks team.

Ponds & Rivers

There is no open water at Thornbury Park.

Cleansing

The collection of litter is extremely important in maintaining the appearance of Hounslow's parks and open spaces and has a direct effect upon how people treat and respect the site. Litter is collected and bins emptied daily by the GS cleansing crews. Any occurrences of fly tipping are cleared by GS within 48 hours of notification, and we work closely with the Enforcement Team to investigate fly tipping issues where possible.

Furniture & Fittings

GS ensure that all furniture is clean and will check benches, notice boards and bins on a regular basis. Items will be cleaned when necessary. Any repairs will be reviewed, and funding opportunities explored with the aim of rectification as soon possible.

Playgrounds

All playgrounds are visually inspected a minimum of once per week (based upon site usage), a recorded quarterly operational inspection, and an annual inspection carried out by an independent inspector to ensure the playground meets ROSPA standards. Any hazards identified are dealt with accordingly and where necessary equipment will be cordoned off whilst repairs are scheduled.





Hard Surfaces

Hard surfaces will be kept clean with litter and leaves removed. Hard surfaces will be maintained in a weed free state. Paths will be kept in a good state of repair and all paths being inspected annually. Any necessary repairs will be reviewed, and funding opportunities explored with the aim of rectification as soon as possible. Drains and gulley's are inspected regularly as part of the Annual Infrastructure Survey.

Buildings & Structures

There are no buildings or structures in Thornbury Park. There is a Network Rail compound area near to the eastern entrance.

Environmental Sustainability

The following regimes are designed to ensure that Thornbury Park is managed in a sustainable way.

Litter Recycling

All litter is taken to Transport Avenue, the West London Waste Authority site within Hounslow borough. It is then loaded onto trains and taken to an energy waste site in Avonmouth, where it is used as a renewable energy source.

Green Waste Recycling

All green waste is either reused or recycled. Grass clippings are spread and left in situ in the park. Wood chippings are used on flowerbeds to provide a compost and a weed control. Other green waste (shrub pruning etc.) is taken to Transport Avenue Waste Disposal Site, where it is then transferred by road to a composting facility for processing.

Pesticides

As a part of our commitment to ensuring a cleaner and greener Hounslow, the use of chemicals to treat weeds was stopped in 2020. This decision supports the Council's ambitions for a cleaner and greener borough and promotes biodiversity and encourages wildlife. This approach is now fully supported by GS in parks and open spaces, enabling the borough to become even more hospitable to plants and animals.

The use of specific herbicides will only be considered when it is not viable to use non-chemical alternatives, for example, controlling the spread of an invasive species such as Japanese Knotweed, as they are especially damaging to the environment.

Removing the use of herbicides does present operational challenges, herbicides have always been considered a cost-effective solution due to their less labour-intensive results. As such GS continue to assess and review their operational schedules to ensure that an adequate resource and suitable approach is applied to control weed growth.

Peat Use

GS do not use peat, or any peat-based products within Hounslow's parks and open spaces.

Infrastructure

GS follow the Council's procurement guidelines when sourcing replacement or new infrastructure items. This includes prioritising products made from recycled and environmentally and sustainably sourced materials wherever possible and financially feasible. For example, using trees felled onsite for seating and fence work, and sourcing fibreglass heritage litter bins to replace ironwork bins. Products made from tropical hardwoods and other unsustainable sources are not used.



Fuel, Fleet & Power Tools

Fleet

As part of an ongoing trial within the Lampton group, the GS fleet use an alternative diesel product, Hydrotreated Vegetable Oil Fuel (HVO). HVO meets OEM fuel specifications and is certified to be a 90% CO2 saving on normal diesel. This efficiency is better than current electric vehicles and is a great stop gap to future technologies given the age of the HGV fleet. It is hoped that a switch to HVO will help GS transition to low carbon technologies in a systematic way, giving time to manage various operational constraints limiting early adoption of electric vehicles.



Power Tools

GS are continuously trialing the use of electric power tools as alternative to 2 stroke machinery. They currently utilise several battery powered strimmer's and blowers and continue to evaluate the effectiveness and development of the technology, and replacing older traditional machinery as it reaches end of life.





Biodiversity & Heritage

We manage our parks and open spaces by ensuring that where possible we maintain a diverse range of age, species and structure in the canopy, understory and herb layers and aquatic spaces.

This is achieved by:

- Managing site specific habitats such as acid grassland, mature veteran trees, rivers, ponds, and woodlands.
- Supporting the borough's wildlife through interventions such as birds and bat houses, stag beetle loggeries, aquatic ledges and educational signage.
- Enhancing existing aquatic and terrestrial habitats to support a diverse range of flora or fauna.
- Exploring opportunities to create new habitats such as wildflower meadows, native hedge planting, aquatic ledges, and copses.
- Consider introducing sympathetic mowing regimes where suitable, for example leaving areas of rough grassland around trees.
- Recognising the effects of climate change e.g., drought, wildfires, floods, disease, biosecurity.
- Prioritising sustainability through resilient planting e.g., drought tolerant trees and plants.
- In 2021 LBH commissioned a baseline report of Invasive species Parks and open spaces portfolio, surveying 195 sites. This information was used to procure a specialist contractor to remove targeted species over a five year period beginning in April 2025 and running for 5 years. This will seek to eradicate: Japanese Knotweed, Giant Hogweed and floating Pennywort, and provide advice on how to deal with Himalayan balsam.
- Biosecurity – Anyone responsible for plant supplies must ensure that all plants and associated soil are supplied free of pest and disease at all points in the supply chain. To achieve this, GS consider the latency period and life cycles of all pests and diseases. Special attention to biosecurity is given to imported stock.
- GS procurement will always prioritise suppliers that are able to demonstrate a supply chain audit trail (for example, are part of a recognised Plant Health Assurance scheme) that ensures plant material sourced within the UK is under a regime of biosecurity-aware production and follow nationally agreed good practice guidelines.

The Nature Recovery Action Plan (NRAP) is a part of Hounslow's Greener Borough Framework and was adopted in 2023. A stakeholder board -Nature Recovery Stakeholder Board (NRSB) was launched in February 2024 and is led by the Nature Recovery Manager with quarterly meetings held in various locations across the borough. Currently planning the 4th meeting to be held in February 2025. More information can be found [here](#).



Ecological Survey 2023

Thornbury Park is an open grassland with woodland boundary areas, it also has a skate park, an outdoor gym, MUGA and a children's playground and linear Orchard.



Habitat opportunities for bats, birds, invertebrates, and borrowing animals (marked by arrows)

The following habitats were identified within the site and its immediate boundaries:

- Amenity grassland
- Tall ruderal
- Hedgerows and trees
- Orchard

Amenity grassland is intensively mown for recreation and therefore is species poor sward, dominated by typical assemblage of grasses- perennial rye grass, meadow grasses, red fescue, dandelion, and creeping bittercress, small area of pampas grass and low growing forbs. Tall ruderal vegetation was also seen at the site dominated by nettles and creeping thistle. Hedgerows and tree lines are present along the northern, eastern, and western boundaries of the site. Including more recent community whip planting. Ground flora is scrubby in places and includes brambles, common nettle, and daffodil.

Bats are likely to use the linear feature (trainline to the Southern boundary) to forage and navigate with the tree lines and hedgerows on the site providing suitable foraging habitat. Birds have several habitat opportunities on mature trees and hedgerows. There could be a possibility of the presence of small number of reptiles using boundary vegetation, grassland margins and dead woodland refugia (marked by blue arrow in the image). Slow worm and hedgehogs were seen in the park during 2024. Pipistrelle bats were detected at the south end of the field.

Considerations

- Biodiversity enhancements could include further native tree planting, and further hedgerows within the site for additional habitat corridors.
- Bat and bird boxes could be installed on trees close to the boundary vegetation.
- Planting of bat friendly species such as the night scented plants which include night scented stock, night scented catchfly, white jasmine, or evening primrose.



Community Involvement

This is crucial to the management of Thornbury Park and will continue to be of the utmost importance.

Friends Groups

The Council works closely with Thornbury Park Friends CIC and encourages them in their efforts to apply for grants and to organise volunteer days and events. We also engage with other community groups and third parties to encourage and ensure opportunities for the needs and requirements of a diverse borough population.

The Parks Team provide support for applications to the Council's Thriving Communities Fund. The CIC is grateful for three grants awarded over the last three years to help set up the company, equip its tool store and fund path improvements. More information about the scheme can be found on the Council webpages [here](#).

Hounslow Friends of Parks Forum holds quarterly meetings. The Friends of Parks provides a support network, and to provide opportunities to build relationships that are based on collaboration.

Friends of Thornbury Park

First formed in 2016, The friend's group had been dormant for some time, but was revived by engaged local community members. They have become a CIC to serve the needs of the park.

Volunteering

The Council and GS work with the public to inform, educate, and volunteer in managing habitats through event opportunities and specific projects such as school planting in greenspaces, green gyms, tree planting and habitat surveying. Community involvement and engagement in nature conservation projects helps to increase the health and wellbeing of our residents. More information on volunteering can be found on the Parks Hub webpages [here](#).

The Council also have an Environmental Champions Scheme, more information available on the website [here](#).

Thornbury Park woodland copses provide a habitat for flora and fauna and a buffer from the railway line. Volunteer days to coppice, reduce ground cover and self-seeded trees are organised as it is vulnerable from ASB - rough sleepers, drug users and litter dumping. GS actively cleanse and reduce the density of these copses.

Local School children also interact with the park and have enjoyed tree planting in the playground and bulb planting along the London Road boundary.

West Thames College students are users of the park and in 2025 the Friends will invite the college to participate more directly in caring for the park.



Marketing

Promotion and marketing of Thornbury Park is carried out by means of a range of measures to ensure that local people and visitors to the borough are aware of the facility.

Entrance Signage

The Friends of Thornbury Park have a dedicated notice board at the London Road entrance which is used to promote work, activities and events held by the Council and Friends Group. This was moved to outside the London Road entrance in 2022, by request of the Friends.



Signage Refresh

In 2021, the Parks Team secured significant funding for a borough-wide refresh of all parks and open spaces signage.

The signage was designed in partnership with Friends, local community groups and other stakeholders to ensure they were designed in consultation with our park's users. The design principles focused on inclusivity, using pictograms and maps to illustrate the facilities available in the park and the surrounding area. This programme was completed in Autumn 2024.

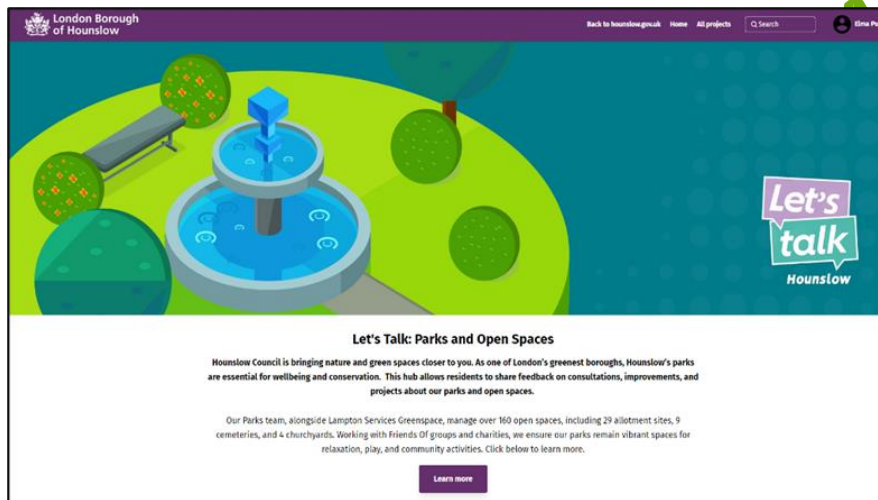
For more information and examples of the new signage please visit the Council webpages [here](#).

Web & Press

The Council's website has a dedicated Parks and Open Spaces section which can be found [here](#). You can find general information about the service, with useful links, advice, and reporting channels for customers to use. Thornbury Park Friends also have a web page and Facebook page.

Parks Hub

The Consultation and Engagement platform Let's Talk Hounslow has a new dedicated Parks Hub which includes current consultations, surveys, and live projects, as well as a digital noticeboard. Since the launch in February 2024, the site has had over 10,000 visitors to the homepage. To view the hub visit [here](#).



Hounslow also has several other websites which are designed to engage with the wider community about our services and the opportunities available in Hounslow. Please visit, [HounslowConnect](#) and [InHounslow](#) for more information.

- Promotion through the London National Park City www.nationalparkcity.london
- London National Park City Mini-Guide for Hounslow, celebrating Hounslow's great outdoors [Hounslow's Mini Guide](#)



The Council also has an active social media presence on [Facebook](#) and [X](#) with the handle @LBofHounslow.

To create community awareness for all its facilities the Council regularly produces articles and press releases about activities and facility development. The Council publishes a regular newsletter, Hounslow Matters, which is provided to all residents and includes news and information about our services, including parks and open spaces. To download the latest publication please follow the link [here](#).

Events

The Council encourages the hire of parks to appropriate organisations for commercial and community events. Events are held in accordance with the Parks and Open Spaces Events Policy found on the council webpages [here](#).



How do we know we have arrived?

Monitoring & Review

This management plan has been designed as a live document that will guide development in the park over the next five years. Progress will be subject to monitoring and review to measure success and delivery of aims.

Members of the Greenspace Parks team regularly visit the site to monitor progress against the action plan; the results of these visits are then discussed at monthly management and meetings with LBH officers and relevant stakeholders.

LBH Parks Officers work closely with GS and the Friends group to monitor progress and discuss future. This includes:

- Performance against the requirements of the Management Plan
- Provision and analysis of infrastructure surveys
- Provision and analysis of asset surveys
- KPI's and performance monitoring

An annual SWOT analysis will be carried out by all stakeholders and, together with the information gathered from all the monitoring methods will be recorded and fed into annually updated management plans.

GFA Judges feedback and award outcome will enable continuous learning, development and improvement by all partners involved in the award process. Discussed at monthly Parks and GS management meetings and meetings with Stakeholders.

Action Planning

Our action plan for Thornbury Park is provided in Appendix 1. This plan is based on an evaluation of the SWOT analysis together with other projects and plans raised by the Friends group. The action plan lists actions and categorises based on timescales and the Green Flag award criteria. The plan will also allocate ownership for each task to the key stakeholders.





Appendix 1

Thornbury Park | Green Flag Award | Action Plan Updated 2025

Key to Action Plan

Green Flag Award Criteria

W	Welcoming Place
H	Healthy, Safe and Secure
VM	Well Maintained and Clean
S	Sustainability
BH	Biodiversity and Heritage
C	Community
Mkt	Marketing
Mgt	Management

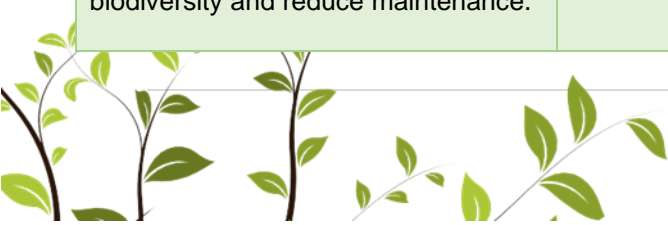
Stakeholders

LBH	Parks Service Management Team
GS	Lampton Greenspace
FoTP	Friends of Thornbury Park

Delivery Timescales

S	Short term (less than 1 year)
M	Medium term (1 to 3 years)
L	Long term (3+ years)
O	Ongoing

MANAGEMENT ACTION	STAKE-HOLDER	GREEN FLAG CRITERIA	TIME-SCALE	STATUS 2025
Increase Park path provision	GS	W, WM	S	Install gravel paths within the wider park – completed. £30k grant approved for path connectivity improvements.
Review of all infrastructure	GS	W, H, WM	M	Infrastructure reviews are ongoing, including proposals to resurface skate park. Providers are being discussed presently.
Review main parks signage	LBH	W, S	O	New signage has now been installed.
Anti-Social Behaviour- Continue stakeholder engagement and targeted enforcement	LBH, GS, FoTP	W, H	O	Stage 2 of 3 part strategy to be main activity for 2025.
Re-use Green waste	GS	H, S	O	Any site generated wood chipping is re used on site
Maintain a healthy tree stock with annual review for tree planting	LBH, GS, FoTP	W, H, WM, S, BH	O, S	No further plans for tree planting. Opportunity exists in SUDS recovery area.
Increase bird boxes & bat boxes, Bat Surveying, create a Stag Beetle loggery	LBH GS FoTP	BH	M	Boroughwide ecological work being led by central team.
Continue to consult and engage with the local community	LBH, GS, FoTP	C	O	Pattern of twice yearly planning meetings between Parks and Friends now in place.
Explore opportunities for enhanced hedge and meadow planting around the site to increase amenity value, biodiversity and reduce maintenance.	LBH, GS	BH	S	Work in partnership with Thornbury Park CIC to further habitat enhancement opportunities in 2025. Any new planting will aim to provide increased ecological



MANAGEMENT ACTION	STAKE-HOLDER	GREEN FLAG CRITERIA	TIME-SCALE	STATUS 2025
				benefits and keep maintenance to a minimum.
Continue to work with the Friends. Continue to provide support to other community volunteer/services to promote greening activities.	LBH, GS, FoTP	C	O	Ongoing. We continue to work closely with Thornbury Park CIC.
LBH to continue to facilitate events within Hounslow's parks and open spaces as part of an active community engagement agenda.	LBH	C	O	Ongoing.
LBH to facilitate opportunities for education, culture, and heritage at the site.	LBH, GS, FoTP	C	S, M	Work with local schools and West Thames College when opportunities arise
Support fitness activities in the park	LBH, GS		O	Walking track and Outdoor gym are in place. Proposals for cricket facilities being explored with TPCIC.
Continue to publicise the park through LBH website, social media platforms and notice board. Also, borough wide campaigns, including achievements, initiatives, and announcements.	LBH, GS, FoTP	Mkt	O	Ongoing
Support other positive promotion of the park through various media platforms.	LBH, GS, FoTP	Mkt	O	Ongoing
The management plan to be reviewed annually and the action plan to be updated annually	LBH, GS, FoTP	Mgt	O	Ongoing

Appendix 2

Annual Maintenance Work Schedules

The following table provides an overview of the annual maintenance work schedules. All frequencies are subject to seasonal variations, resource, and specific horticultural requirements. They are reviewed annually by the Operations Manager at GS to ensure they remain suitable and reflect any significant site changes. See “Meeting the Green Flag Criteria” section for more detailed management information.

Service	Frequency/Management information
GM Summer works (March - October) <i>Amenity grassland cutting</i> <i>Rough grassland cutting</i> <i>Wildflower meadow cutting</i> <i>Hedge & shrub cutting</i>	Managed by the Grounds Maintenance Teams Once every 3 weeks 1-2 cuts per summer season 1-2 cuts per summer season 1 “reduce cut” dependent on horticultural requirements
GM Winter works (October – March) <i>Hedge & shrub cutting</i> <i>Pond clearance</i> <i>Leaf clearance</i>	Managed by the Grounds Maintenance Teams 1 “hard cut” dependent on horticultural requirements As required, dependent upon size and conditions As required, from hard surfaces and grass areas
Cleansing <i>Litter collection & bin emptying</i> <i>Non-offensive graffiti removal</i> <i>Offensive graffiti removal</i> <i>Fly tip removal</i>	Managed by the Cleansing Teams [site specific] Daily, including bank holidays. Within 7 days of notification Within 24 hours of notification Within 48 hours of notification
Playgrounds <i>Safety inspections</i>	Managed by the Playground Inspectors 1 visual inspection per week minimum (based upon site usage), quarterly “operational” inspections, recorded, annual independent inspections by the Royal Soc. for the Protection of Accidents (ROSPA), recorded.
Infrastructure <i>Cleansing (bins, benches, signs etc).</i> <i>Lighting</i> <i>Buildings</i>	Various teams/management As required, based on visual inspections and reports Inspections and repairs managed by Hounslow Highways All H&S checks conducted, electrical, fire, water, etc.
Trees <i>Tree inspections</i> <i>Tree maintenance</i> <i>Tree watering</i> <i>Tree planting</i>	Managed by the Tree Team Annually Based on previous inspections, prioritised by H&S Summer: May – September (for trees under 3 years) Winter: October – March



Monitoring the Annual Maintenance Work Schedules

Members of the Parks Team conduct site visits to ensure that the work schedules are being adhered to and report issues to GS to resolve where necessary. Customer enquiries relating to maintenance issues are also routinely assessed to ensure they are rectified in a suitable and timely manner.

The Parks Team are currently working with the Ward Improvement Team to develop a new monitoring program, which we expect to be deployed in spring 2025.

The program will rely upon the Land Audit Management System (LAMS), developed by the Association of Public Service Excellence (APSE). This is an industry recognised approach, which many local authorities use to monitor the performance of their park services.

The program will also make use of and refer closely to the guidance provided by Parks for London in their recently updated Green Space Quality Manual. This provides valuable insight and understanding as to “what good looks like” and will help to ensure a consistent approach is taken during routine monitoring.

The new monitoring program will be periodically reviewed to help measure its success in improving the parks services. We expect it to help identify where there are issues and trends in performance to inform how best to deploy resource in the areas which require it the most.

For more information regarding the tools and approach that will be used for the monitoring program, please visit the [APSE LAMS](#) page and download the Parks for London [Green Space Quality Manual](#).



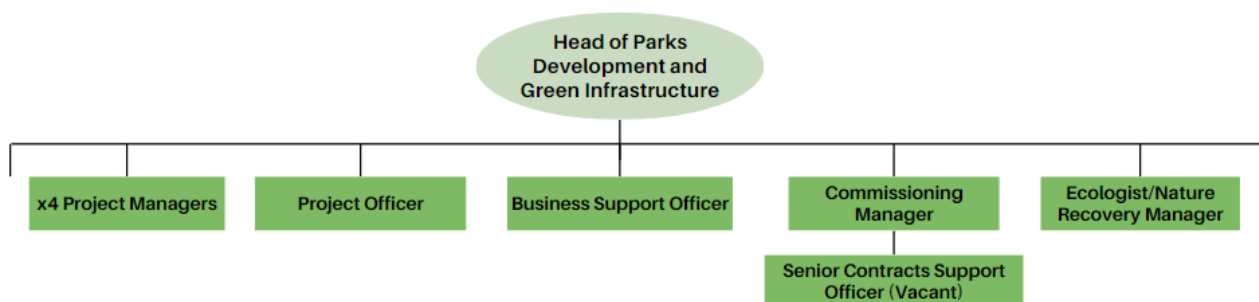
Appendix 3

Management Structure & Responsibilities

Thornbury Park is owned and managed by the LBH and maintained by GS. Information below sets out the management structure and describes the roles and responsibilities of the key personnel involved in managing and maintaining the site.

LBH Parks Service Management Structure

The Environment and Culture Directorate provide the following roles who are responsible for the management, and associated roles, of Hounslow's parks and open spaces:



LBH Head of Parks Development & Green Infrastructure

Senior commissioning role for the management and partnership with GS, senior advisor in relation to parks and open spaces, strategy and policy development, Member's liaison.

LBH Parks Project Managers (x4)

Project development and management, fundraising, community engagement and consultation, implementation, strategy, and policy setting.

Parks Project Officer

Development and delivery of projects, fundraising, community engagement and support Head of Parks.

Commissioning Manager

Supplier performance governance and relationship management, Legal and contracts, Planning/Commissioning, Operational Service delivery and business processes/systems.

Senior Contracts Support Officer

Supplier performance, customer service and casework, community engagement and consultation, project support.

Parks Business Support Officer

Assistance with finance; administration, project support and communications.

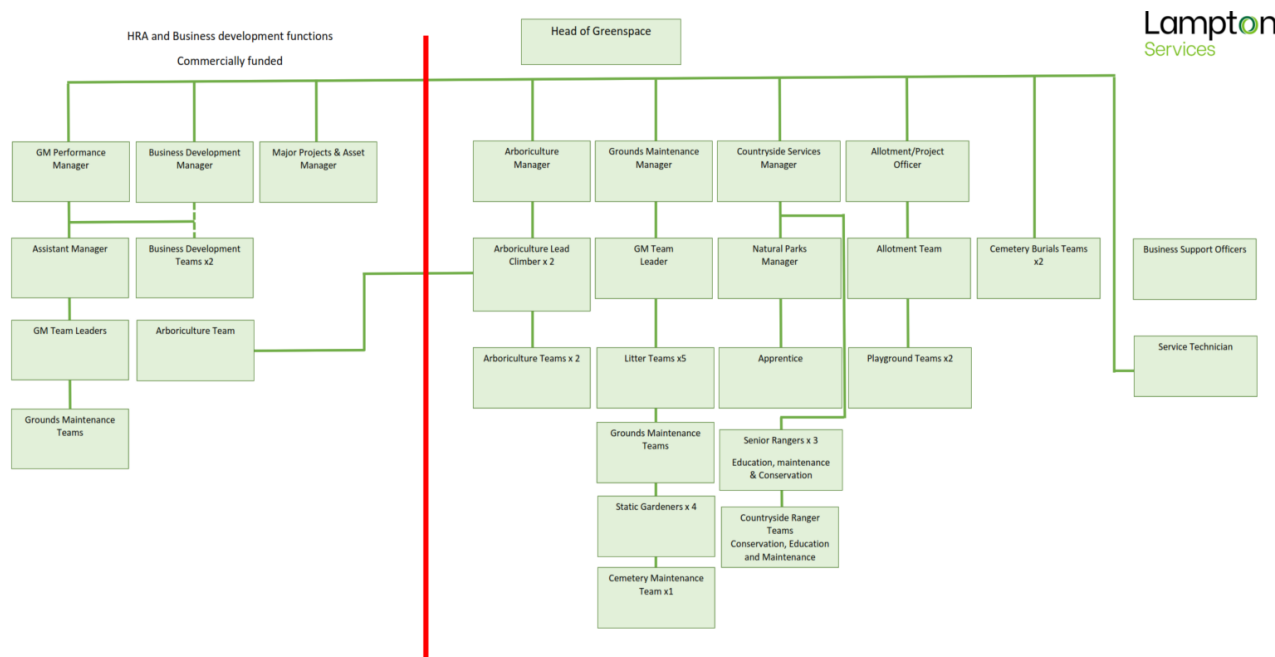
Ecologist & Nature Recovery Manager

Responsible for providing expert ecological advice relating to the management, protection and enhancement of important habitats and species within the borough.



Lampton Services Greenspace Management Structure

The following GS roles are responsible for the management of Hounslow's parks and open spaces:



Head of Service

Responsible for the ground's maintenance service provision. Oversees the delivery of the specification which includes infrastructure.

Projects Manager including the Allotment Service

Responsible for the development of park infrastructure, management of the allotment service, overseeing horticultural standards, schemes, and developments. Main contact for contractors (CDM). Friends and Member liaison.

Countryside Manager

Responsible for the management of the borough's countryside service. This role includes the management of the Ranger team and educational, animal husbandry, environmental and wildlife operations/programs associated with these locations.

Planned Maintenance Manager

Responsible for the management of the operational resources to deliver the ground maintenance services for the parks and open spaces sites.

Performance & Support Officer

Customer Service functions- Freedom of Information (FOI), customer enquiries, councillors' enquiries, and monthly statistics; technical project support.

Tree Team Manager

Responsible for the teams that carry out the inspections and maintenance of the boroughs 85,000 park trees. Oversees all tree planting schemes for the council and community groups in parks. Managing and mapping/recording of invasive species. Planning application guidance to LBH.





Playground Inspectors x2

Visual, operational, and minor repairs of playgrounds. Inspected annually external contractor.

Operational Teams

Grounds maintenance is delivered using mobile teams. These teams provide the Grass cutting, horticultural tasks, general maintenance, litter bin emptying and litter picking.

Business Support Officer

Provides administration for fleet, handles finances and overtime schedules.



London Borough of Hounslow
Hounslow House, 7 Bath Road
Hounslow TW3 3EB
www.hounslow.gov.uk

Tel: 0208 583 5555



**London Borough
of Hounslow**

Lampton
Services
Greenspace