

GREEN FLAG MANAGEMENT PLAN 2020-25

Redlees Park

2020-25



**London Borough
of Hounslow**

Lampton
Services
Greenspace

Updated 2025



Foreword

The London Borough of Hounslow has some superb greenspaces that everyone can be proud of. They are places where people can relax, enjoy nature, play, or take part in cultural and historic activities and recreation. They are essential for the health and well-being of our residents, and they are vibrant spaces that provide a borough-wide green infrastructure for our communities.

In Hounslow, we are committed to stimulating a strong and robust green recovery related to our Greener Borough Framework and Climate Emergency. The Council's Green and Blue Infrastructure Strategy plays a major role in delivering the Greener Borough Framework and sets out key priorities for our greenspaces in areas such as health and wellbeing, regeneration, climate change and nature recovery.

The London Borough of Hounslow considers the Green Flag Award process as a tool towards positively developing our greenspaces within this strategic framework and in partnership with our communities. It contributes to providing a vision, with clear objectives and priorities for how the Council and its partners would like to see greenspaces managed in future years.

This plan is not only the commitment from the Council to improve our greenspaces but is an important recognition of the support and commitment of the friends of parks, community groups, local clubs, third sector and partners who share our visions and work with us to respond to our green agenda.

Acknowledgements

This plan has been produced by Lampton Services Greenspace* (GS) and the London Borough of Hounslow (LBH) Parks Team. In addition, it is important to acknowledge the great contribution from all interested groups for their commitment and dedication in supporting the development, promotion, and management of Redlees Park.

*Lampton Services Greenspace (GS) is part of the Lampton Limited Group and is a company wholly owned by London Borough of Hounslow with an aim of returning value to the Council representing a bold new ambitious approach.





Contents

Foreword	1
Acknowledgements	1
Purpose of the Plan	3
Where are we now?	5
Site Description and facilities	5
Detailed History	6
Recent Developments	7
Where do we want to go?.....	9
Green Flag Analysis	9
SWOT Analysis.....	10
How do we get there?.....	11
Vision & Objectives	11
Meeting the Green Flag Award Criteria.....	12
A Welcoming Place	13
Healthy, Safe & Secure.....	13
Well Maintained & Clean	15
Environmental Sustainability	19
Ecological Survey 2023.....	22
Marketing.....	24
How do we know we have arrived?	27
Appendix 1- Action Plan.....	28
Appendix 2- GS Works Programme	30
Appendix 3-Management Structure & Responsibilities.....	32





Purpose of the Plan

The Management Plan for Redlees Park has been prepared by LBH and Lampton Services Greenspace. The plan is specifically developed for the individual site with a dedicated Green Flag Action Plan.

This plan has been developed following detailed assessment of the Green Flag Award criteria and a comprehensive collaborative review of the existing uses, management, and maintenance of Redlees Park.

As part of the development of the plan, detailed consultation has taken place with the Lampton Services Greenspace parks maintenance and management team, LBH officers and Friends groups.

The Management plan is a 'working document' that brings together all the information relating to Redlees Park and will be updated, revised, and annually reviewed. This plan has been developed based on the Commission for Architecture and the Built Environment (CABE) Space document "*A Guide to Producing Park and Greenspace Management Plans*" and the "*Green Flag Award Guidance Manual*" guidelines.

Policy & Strategic Context

Actions and aims within this management plan are both guided by, and relate back, to wider Council strategies. The development of parks and open spaces are a vital component of the Council's Corporate Plan 2022 – 2026. Our work during this period is focused on six priority ambitions for a borough that is greener, healthier, cleaner, thriving, safer, and liveable. Green infrastructure contributes in many ways to helping us achieve these priorities.

A key approach of Hounslow Council is working under the concept of "One Hounslow" where services are delivered without silos, working for specific outcomes with several internal council departments, community groups, NGOs, and government bodies.

Parks and open spaces play an important role in the approach highlighted in the Council's Joint Health and Wellbeing Strategy with start, live and age well, preventing ill-health, which in turn has an impact on reducing costs within the wider economy, the Council, and the NHS.

The Council's Equalities and Diversity Strategy 2023, created to improve equality, diversity, and inclusion - sets out an ambitious approach to target policies and funding to the areas which need them most to thrive. The strategy is based on three pillars - Equality by Place, Equality by Group, and Equality as Employer. Hounslow Council has committed to transform the opportunities and life-chances of communities in the borough's 30 most disadvantaged neighbourhoods.

The Council approved the Greener Borough Framework 2020-30 which seeks to provide a high-level framework to deliver on the Council's ambition and aspirations for the borough through enhancing our environment and reducing our use of resources. The framework is part of a wider ambitious green agenda bringing different people and organisations together to discover, engage, innovate, and deliver.





The adoption of the Green and Blue Infrastructure Strategy and Nature Recovery Plan are the pillar of the strategic framework for the development of our parks and open spaces and their management plans through the Green Flag Award process.

Useful Links:

- [Corporate Plan 2022-26](#)
- [Climate Emergency](#)
- [Green Infrastructure Strategy](#)
- [Greener Borough Framework](#)
- [Nature Recovery Action Plan](#)
- [Equalities and Diversity Strategy](#)

Parks Funding

The Council's Parks service is funded by an annual salary and contract revenue budget for base line ground maintenance activities, and provided by our service providers, Lampton Services Greenspace, to maintain all of Hounslow's parks and open spaces, including allotments, cemeteries, trees, countryside and other workstreams.

Current capital funding has been allocated through a parks improvement project, and sites which require improvement will be prioritised. This funding will cover 2 years of project delivery and staff resourcing 2023 – 2025. Other capital funding is obtained via Community Infrastructure Levy (CIL); S106, the Council's Thriving Communities fund (local CIL) and other grants and initiatives. These are applied for annually or as necessary and are based on need and strategic investment required by both the Council and local communities.



Where are we now?

Site Description & Facilities

Redlees Park houses many leisure facilities including hard standing tennis courts, an upgraded play area, a community vineyard, artists' studios, outdoor gym, community orchard, courtyard area, new park signage and a TCV Green Gym. The basic layout is one of a large rectangle of amenity grassland surrounded by mature trees and shrub beds with the main sports and play facilities at the northern end adjacent to the pay car park and the artists' studios.

The park is part of the larger complex of recreational facilities that includes a public library, Isleworth indoor leisure centre and swimming pools, Redlees artists' studios in the old stable block, bowls club and an under-5s play centre.



Site Information

Name: Redlees Park

Contacts: 020 8583 5555

Web: www.hounslow.gov.uk

Designation: Open Space **Ownership:** London Borough of Hounslow

Size: 6.38ha

Byelaws: A copy can be downloaded at www.hounslow.gov.uk

Access: open access at all times

Transport: Train: Isleworth or Twickenham Station

Buses: H20/H22/481/267

Tube: n/a

Parking: Pay & display via Worton Rd entrance

Local Facilities: Playground, Outdoor Gym, Tennis Courts, Art Studio, Library, Leisure Centre, Bowls Club, Community Orchard, TCV Green Gym.

Detailed History

The park is on land that was once a gravel pit and formerly part of the grounds of Redlees House. Around 5.8 hectares were acquired by Heston & Isleworth UDC and Redlees Park was officially opened in July 1932, on the same day as two other local recreation grounds, Beaversfield Park and Redlees Park. In that October it was one of the parks used as a venue for the Heston & Isleworth Charter Celebrations.

In the early 19th Century, Redlees House was known as HIPPESLEY House and had grounds of nearly 7ha. It was purchased in 1852 by Charles Farnell, of the wealthy Farnell brewing family who owned Isleworth Brewery from 1800. It was later renamed Redlees House by William Farnell Watson. In the early 20th Century part of the land was used for tomato growing for which purpose 21 large glasshouses were erected, covering some 4 hectares in what the central and southern part of the public park is now. The former stable block adjacent to the park is now used as an Artists Studios. It has a fine clock made by Charles Frodsham & Co. of The Strand, probably installed between 1830-40. When the park opened its facilities included a children's playground, described in the opening speeches as 'one of the finest in the country', 3 football pitches, a cricket table, bowling green, 3 grass and 6 hard tennis courts and an 18-hole putting green. Further facilities were planned; including a sports pavilion, refreshment room, bandstand, shelters, and ornamental flower gardens when money became available.

In 1997 an area near the Twickenham Road entrance was planted as a vineyard on two allotment plots. It included *Vitis vinifera* cultivars 'Riesling', 'Pinot Noir' and a red, 'Dunkelfelder'; the first crop was harvested in 1999 producing 20 bottles of 'Redlees Rosé' the following June.



Recent Developments

2025 Aspirations:

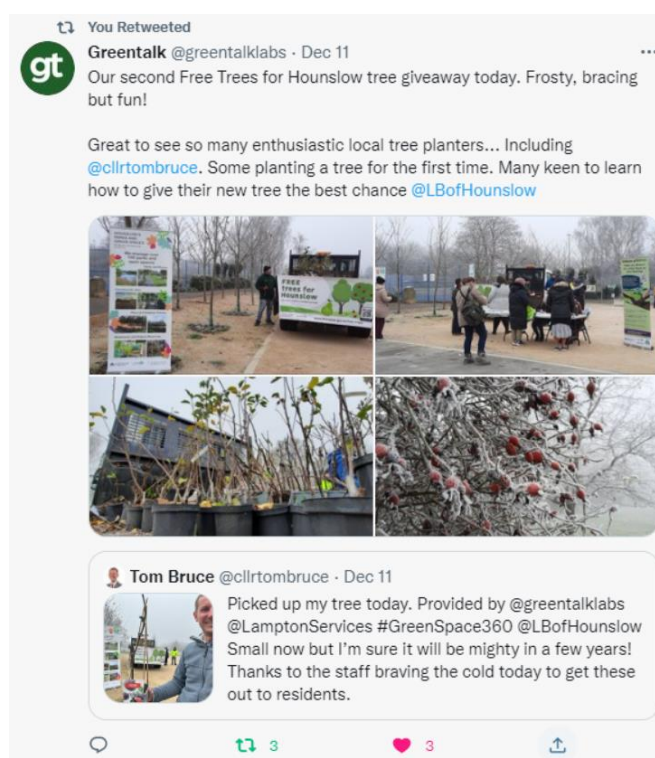
- Explore the potential increase of bird and bat boxes at the park.
- Explore the potential of Redlees Park being a site for Volunteering in Parks.
- Continue to engage with residents and involve them in future events or green opportunities and try to form a 'friends of' group.
- Build the entranceway SuDS and incorporate it into the park major.
- Install a cycle repair station on the Twickenham road entrance to promote active travel.
- Explore potential for site to be used as a London National Park City active greening/football practice site.

Achievements 2024:

- The entranceway to Redlees Park from Worton Road has a specialist contractor commissioned to design and build Sustainable Urban Drainage system at the site. Not only will the scheme help with surface water runoff it will also provide an aesthetically pleasing, biodiverse area, that frames the historic buildings better.
- The park hosted numerous events in a sustainable manner that engaged residents with the park whilst not damaging the green infrastructure.
- Two wildflower meadows with bulbs have been commissioned, totalling 860 square metres. These are to be maintained for five years.
- Target hardening works were undertaken at the leisure centre entrance to dissuade improper park usage.

Achievements 2023

- Play area refurbished and improved.
- The park plaza continued to host events as a mixed-use space such as the Christmas at Redlees park event and the Redlees Art Studio exhibition.
- Entryway consultation completed.
- Health in the park event.
- In 2023 Redlees Park was one of the three designated locations for Free Trees for Hounslow pickup event. Which saw over 250 residents show up and get their tree.





Achievements 2022

- Resumption of TCV Green Gym programme
- Art fair at the Redlees Artists' studio
- Plans for events in the new courtyard in 2023.
- Free trees for Hounslow event at the Courtyard
- Installation of cycle racks
- Car park refurbishment to a pay car park
- New bins and benches
- Removal of redundant knee rail fencing
- Painting of the main gates on Worton Road
- New Parks signage at every entrance

Achievements 2021

- Due to the pandemic – little opportunity for community activities
- Funfair returned for the October half term.
- Some tree planting took place.
- Display of daffodils along Twickenham Road railings
- Boules plays in Courtyard.
- TCV Green Gym to return in 2022.



Previous Achievements

- Installation of an Outdoor Gym
- Upgraded playground.
- Community Orchard planted with Tree for Cities and local volunteers.
- Demolition of derelict pavilion and creation of the tree lined Courtyard
- TCV Green Gym storage container installed, volunteering programme in progress.
- Repair to entrance fencing and bollards.
- TCV Green Gym activities to create a dead hedge and installation of bird boxes.
- Landscape Architect commissioned to create design ideas for Worton Road entrance.
- Use of the Courtyard for Boules
- Adaption of concrete benches to install wood slats for comfortable seating.





Where do we want to go?

Green Flag Analysis

The ambition for LBH in partnership with GS and community groups is to continue to work to improve standards and develop parks and open spaces strategically according to corporate priorities and local needs.

A clear connection between the criteria identified by the Green Flag Award Scheme and the main points gained from the SWOT analysis and site review completed with the Stakeholders of Redlees Park has helped to establish a comprehensive management plan for this site.

The management plan process is described below the section “How do we get there?”.

Consultation & Co-design

The Council has a strong partnership with the stakeholders of Redlees Park. Co-designing the future of the park together in most initiatives and opportunities.

Continuous dialogue is in place through regular communication and a quarterly forum where Friends discuss wider issues and learn from each other to improve overall management standards.

LBH works in close partnership with GS with monthly project and development team meetings where the monitoring and progress of these plans are discussed.

LBH engage annually with Friends groups and community groups in compiling these management plan and their progress.

Ward Councillors and the Lead Cabinet Member for Recreation, Public Spaces and Parking are regularly updated on parks development projects and strategies.

Liaison with the Hounslow Met Police and the Councils Enforcement Team on matters around ASB and public safety.





SWOT Analysis

A SWOT analysis is a management critique to identify Strengths, Weaknesses, Opportunities and Threats to help shape future improvements.

STRENGTHS <ul style="list-style-type: none">• Outdoor Gym• Playground• Amenity grassland for sports• Tennis courts• Food Growing Vineyard and Community Orchard• Events site• New signage• Additional site facilities – Artist's Studios, Library, Leisure Centre, Bowls Club, Play Centre• Various interest groups and individuals• School Sports Day venue	WEAKNESSES <ul style="list-style-type: none">• Width of paths• Access points• No on-site composting.• No current water attenuation despite being in flood risk area.• Little historical information currently.
OPPORTUNITIES <ul style="list-style-type: none">• Upgrade paths• Establishment of a walking track• Upgrade entrances• Community events• Cultural Commercial events• Connection to other facilities on site bringing greater cohesion.• Establish a 'friends of' group.• Incorporate London National Park City in activities at the site.• Form a group to reestablish community green gym.• Promote SuDS as an environmental practice and promote resident buy-in and engagement.• Improve the entrance plaque and install signage to welcome users.• Promote historical importance of the park and facilities.	THREATS <ul style="list-style-type: none">• Anti-social behaviour• Climate Change/disease/drought/pests and invasives.





How do we get there?

Vision & Objectives

Vision for Redlees Park:

“Interested parties and individuals at Redlees Park, the London Borough of Hounslow and Greenspace will work together to create and maintain an exemplary centre for community involvement and enjoyment, and which is wildlife friendly, sustainable, resilient to climate change, and safe and accessible to all.”

Key objectives for Redlees Park are:

- To continue to work closely with the Friends group and users of the facilities to adequately maintain and improve the facilities.
- To ensure that Redlees Park is a place that is secure, safe to use, and is clean and well maintained.
- To ensure that the management of the landscape maintains the heritage character of the park.
- To ensure that the park is promoted and managed to provide a high-quality service for the people using it.
- To continue to encourage and promote community involvement in the management of the park.
- To ensure that the management of the park protects and enhances the biodiversity of the site and borough.
- Provide and improve opportunities for good physical and mental health and well-being.
- Creating opportunities for connecting green spaces for wildlife and increasing the boroughs ecological resilience and connectivity



Meeting the Green Flag Award Criteria



Management of Redlees Park

This sets out guidelines and general principles to be followed in delivering the vision and objectives outlined above.

Management of the park needs to deliver high standards of maintenance of the soft and hard landscaping of Redlees Park within existing revenue budgets and through capital infrastructure funding opportunities.

Delivery Partners

The Council works pro-actively with interested parties and individuals of Redlees Park, consulting with local people regarding their views of the facilities and any impact that is made on their lives. Continuing this relationship is a very high priority for the management of the open space.

GS are responsible for maintaining all the parks and open spaces within the LBH Parks Service. Maintenance is carried out by the contractors' operatives who have the necessary skills to achieve high and consistent horticultural standards. We also work with environmental volunteering groups. For more information, please see the "Community Involvement" section below.



A Welcoming Place

The following management regimes all play a part in ensuring that Redlees Park continues to be a welcoming area.

Graffiti Removal

As a part of our aim to make the borough safe, green, and clean we are committed to reducing and removing graffiti. The site will be regularly inspected for graffiti. All graffiti will be removed within 7 days of notification, where the graffiti is racist or offensive it will be removed within 24 hours of notification.

Signage

Park signage will be kept clean and is regularly inspected, any repairs will be carried out promptly. For more information, please refer to the “Marketing Section” below.

Pathways

All paths and hard surfaces will be inspected annually. Any necessary repairs will be reviewed, and funding opportunities explored with the aim of rectification as soon possible.

Visibility

Vegetation will be reduced so that where possible site lines are achieved across the site.

Healthy, Safe & Secure

The following management regimes all play a part in ensuring that that Redlees Park continues to be a healthy, safe, and secure place

Health & Wellbeing

We recognise the benefits that our green spaces can make to the health of our residents.

We are committed to developing active environments that enhance leisure, sport, physical activity and play opportunities in priority areas.

The Councils [Playing Pitch Strategy](#) in particular, identifies needs for sports facility improvements and sets out priority projects for delivery in partnership with key stakeholders. We work with Council services to ensure that our approach supports the broader Council strategies around health and wellbeing and together with Active Travel team, Leisure Services, Transport, Public Health, Community Development team and the local community we aim to deliver these improvements.

Useful Links:

- [Health and Wellbeing Strategy 2023-26](#)
- [Data Hub](#)

Healthy Hounslow

Healthy Hounslow is a partnership between several organisations supporting people in leading healthier lifestyles; to become more active, eat well and stop smoking. The partners that make up Healthy Hounslow are Hounslow Council, West London Trust, Feltham & Bedfont Primary Care Network, MoreLife, Maximus/BeeZee and Lampton Leisure. The services and support offered by Healthy Hounslow are: Smoking cessation, Health and wellbeing coaching, Healthy weight management, Exercise on referral, Cook and eat sessions, and Community NHS Health Checks.

You can find out all about Healthy Hounslow at our website www.healthyhounslow.co.uk



Move More Hounslow Activity Map

- Available online to be [here](#).
- Map shows most parks in the borough that have a multitude of free activities available.



Site Safety

All GS staff and contractors play an important role in terms of a visible staff presence. All are uniformed and where necessary will wear highly visible clothing. All works will have been risk assessed to ensure the highest level of public safety.

Control of Dogs

Most dog owners act responsibly and keep their pets under control. However, the council continues to receive comments and complaints from residents about the behaviour of some dogs and irresponsible dog owners within parks and open spaces.

In response to this, the council is holding a public consultation process to gather residents' opinions about a variety of dog control related issues. The feedback will help us decide whether to introduce a dog control public space protection order (PSPO).

PSPOs are aimed at ensuring public spaces can be enjoyed free from anti-social behaviour. They are not about stopping the responsible use of public spaces - but they do provide councils with a tool to tackle persistent issues that are damaging their communities. For more information on the status and findings from the dog PSPO consultation please see the webpage [here](#).

Redlees Park welcomes responsible dog owners. The play area and fenced sports areas are already dog exclusion zones, and this has been reflected in the PSPO consultation.



Community Safety

Hounslow Community Safety Partnership (HCSP) is responsible for reducing crime, disorder, and substance misuse in the London Borough of Hounslow. Along with other supporting partners, HCSP brings together key local agencies including:

- London Borough of Hounslow – Safer Communities Team
- Metropolitan Police Service (Hounslow Division)
- Hounslow district of the National Probation Service
- Hounslow NHS Trust
- London Fire and Emergency Planning Authority
- www.hounslow.gov.uk/community-safety

The Council's Enforcement Team have responsibility for overseeing Community Safety in the boroughs' parks and open spaces. They walk through parks to show presence and work with the Parks Team and GS to target regular occurrences of ASB. Occasionally a joint task force operation including those above is required i.e., rough sleeping, food dumping, drinking and drug misuse.

In 2024, Hounslow Council established a Violence Against Women and Girls (VAWG) Steering Group focused on addressing VAWG issues in parks and open spaces. This group identifies short term and long-term strategies and opportunities for partnership development. Key approaches include clearing sightlines, encouraging natural surveillance, and fostering a sense of ownership within these spaces through vegetation removal, raising tree canopies, encouraging volunteering in parks, and organising police walk and talks. The team have also been working closely with:

- London Borough of Hounslow – Domestic Violence Reduction Unit
- London Borough of Hounslow – Rough Sleepers Unit

Additionally, they contribute to the WA – BCU (West Area – Borough Command Unit) meetings, which include boroughs of Hounslow, Hillingdon and Ealing.

Well Maintained & Clean

The following regimes are designed to ensure that Redlees Park is clean and well maintained.

Grass Maintenance

GS employ several different management approaches to maintain grass areas within our parks and open spaces. Generally, grass areas are managed either as amenity grassland, rough grassland, or as wildflower meadow. Within many of our larger parks, the grass is left uncut as part of the annual No Mow May campaign which was also referred to as [Hounslow's Natural Summer](#) in 2024. For more information see the Council's webpage [here](#).

Redlees Park consists mainly of amenity grassland, with some boundary areas managed as rough grassland. There are also plans to create wildflower strips around some of the perimeter pathway in 2024/25.

Amenity Grassland

Amenity grassland consists of areas used for general recreation, and formal and informal sports, and can include wide-open spaces or those areas planted with trees and shrubs. These areas are regularly cut during the growing season, to ensure they can continue to be used for recreation throughout the year (see Annual Maintenance Work Schedule). Grass edges, whether they are against paths, fences or walls will be cut at the same time as the rest of the grass using strimmers in most areas.



Rough Grassland

Rough grassland consists of areas which are cut less frequently generally 2-3 times a year. These are usually areas which are less accessible to the public and help support beneficial insects and small mammals, as well as protect features such as boundaries, hedges, and ponds.

Wildflower Meadows

Wildflower meadows are areas which are actively managed and promoted as wildlife areas. They are suitably prepared, sown and protected by GS, to ensure they establish and flourish to help promote pollinators, and to increase the biodiversity within the open space. They are clearly marked out, with interpretation boards to help inform the public about the benefits of wildflower meadows and how they are managed.

Our meadows provide a rich floral display during spring and summer with plants including Ox-eye daisy, Common Birds-foot-trefoil, Black Knapweed, Field Scabious, and Yellow Rattle, though there is a change in the mix of species in flower through the months. These flowers are an important source for nectar feeding species.

As part of the council's commitment to invest in green infrastructure, GS help identify additional areas within our parks and open spaces, which can be managed as wildflower meadow, where suitable and in consultation with Friends groups and other stakeholders. For more information about wildflower meadows and how we manage them, please see the Council webpages [here](#).

Trees

Trees are an incredibly significant feature in the borough's parks and open spaces. They provide a variety of benefits not only to visitors but to the overall environment of an area, creating habitats and providing natural shade. They form an important part of the borough's green infrastructure, and this is reflected within the council's [Green Infrastructure Strategy](#).

Tree Maintenance

To ensure that trees continue to contribute to the landscape it is essential that we think about their health and safety. Trees within parks and open spaces are subject to inspection by suitably qualified and experienced GS Arboriculturists. This is to identify and remedy any unacceptable risks to people using the sites, or the removal of trees that are extensively decayed compromising their structural integrity. Tree pruning is only carried out where necessary for risk management purposes or where formative pruning is necessary; this approach allows Hounslow's parks to retain a natural landscape with well-formed specimens.

Hounslow Council works closely with Friends, Councillors and Lampton Services Greenspace tree team to consider the tree population within Redlees Park to make improvements and ensure that there is continuity in the way that the trees are managed.

Tree Planting

During 2023-2024 the Council continues to set ambitious tree planting targets, with plans to plant over 5000 new trees and whips in parks and open spaces. This forms one of the main ongoing targets set out in the [Green Infrastructure Strategy](#). For more information on tree planting locations and species, please see the Council webpages [here](#).

Since 2020, Redlees Park has 321 trees and whips planted around the site.

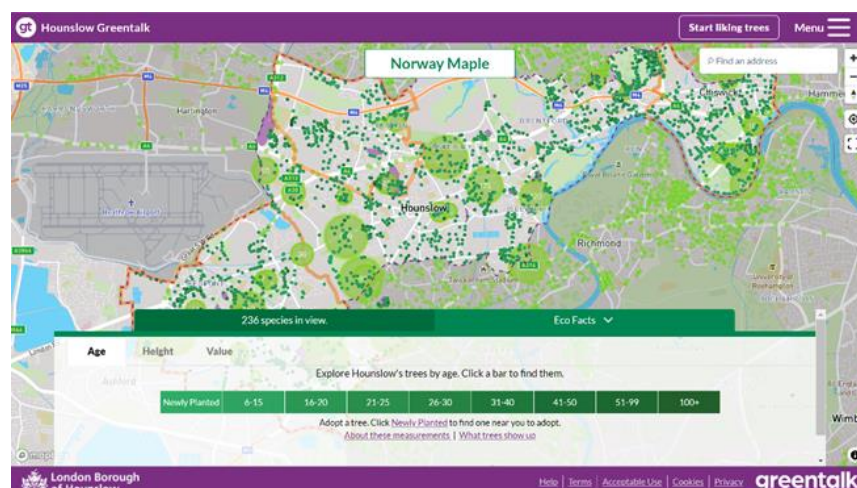




Greentalk

Hounslow Greentalk is an innovative new platform developed as a bespoke resource for Hounslow residents. It has lots of clever features to help explore public trees and make a positive difference to the environment. The platform provides a unique opportunity for Hounslow residents to adopt newly planted trees and help their borough become greener. Anyone who wants to find out about trees in the borough can use the Greentalk interactive map to explore their area through a tree focused perspective. Other features include but not limited to:

- Adopting a tree
- Watering notifications
- Green walks
- Tree giveaways



Over 120,000 trees have been mapped, and around 33,000 can be liked by registered users. Liked trees are saved as favourites and can be accessed through the user profile. The data used to display all the information on Hounslow Greentalk is derived from the council's tree partners who manage the trees in the borough and regularly provide up-to-date information to keep the system as relevant as possible. If a resident is aware of a problem with a tree, Hounslow Greentalk can help them report the exact tree with the right information to the relevant tree partner.

For more information, please visit [Hounslow Greentalk](#)

Wetland Management

Sustainable Urban Drainage Design

The Parks team work closely with the Flood Risk team, to help inform on Sustainable Urban Drainage (SUDs) features and design during parks development projects. This approach helps provide ecological and sustainable solutions, to help alleviate flooding within urban areas.

Ponds & Rivers

There is no open water at Redlees Park.

Cleansing

The collection of litter is extremely important in maintaining the appearance of Hounslow's parks and open spaces and has a direct effect upon how people treat and respect the site. Litter is collected and bins emptied daily by the GS cleansing crews. Any occurrences of fly tipping are cleared by GS within 48 hours of notification, and we work closely with the Enforcement Team to investigate fly tipping issues where possible. Litter is collected daily by the site attendant.

Furniture & Fittings

GS ensure that all furniture is clean and will check benches, notice boards and bins on a regular basis. Items will be cleaned when necessary. Any repairs will be reviewed, and funding opportunities explored with the aim of rectification as soon possible.



Playgrounds

All playgrounds are visually inspected a minimum of once per week (based upon site usage), a recorded quarterly operational inspection, and an annual inspection carried out by an independent inspector to ensure the playground meets ROSPA standards. Any hazards identified are dealt with accordingly and where necessary equipment will be cordoned off whilst repairs are scheduled.





Hard Surfaces

Hard surfaces will be kept clean with litter and leaves removed. Hard surfaces will be maintained in a weed free state. Paths will be kept in a good state of repair and all paths being inspected annually. Any necessary repairs will be reviewed, and funding opportunities explored with the aim of rectification as soon possible. Drains and gulley's are inspected regularly as part of the Annual Infrastructure Survey.

Buildings & Structures

There are several Council owned and managed buildings situated in and around Redlees Park. These include Isleworth Leisure Centre, Childrens Nursery, Isleworth Bowls Club, and the historic Isleworth Studios. These buildings are al managed by other services or via leases, apart from one store building which is managed by GS.

Environmental Sustainability

The following regimes are designed to ensure that Redlees Park is managed in a sustainable way.

Litter Recycling

All litter is taken to Transport Avenue, the West London Waste Authority site within Hounslow borough. It is then loaded onto trains and taken to an energy waste site in Avonmouth, where it is used as a renewable energy source.

Green Waste Recycling

All green waste is either reused or recycled. Grass clippings are spread and left in situ in the park. Wood chippings are used on flowerbeds to provide a compost and a weed control. Other green waste (shrub pruning etc.) is taken to Transport Avenue Waste Disposal Site, where it is then transferred by road to a composting facility for processing.

Pesticides

As a part of our commitment to ensuring a cleaner and greener Hounslow, the use of chemicals to treat weeds was stopped in 2020. This decision supports the Council's ambitions for a cleaner and greener borough and promotes biodiversity and encourages wildlife. This approach is now fully supported by GS in parks and open spaces, enabling the borough to become even more hospitable to plants and animals. The use of specific herbicides will only be considered when it is not viable to use non-chemical alternatives, for example, controlling the spread of an invasive species such as Japanese Knotweed, as they are especially damaging to the environment.

Removing the use of herbicides does present operational challenges, herbicides have always been considered a cost-effective solution due to their less labour-intensive results. As such GS continue to assess and review their operational schedules to ensure that an adequate resource and suitable approach is applied to control weed growth.

Peat Use

GS do not use peat, or any peat-based products within Hounslow's parks and open spaces.

Infrastructure

GS follow the Council's procurement guidelines when sourcing replacement or new infrastructure items. This includes prioritising products made from recycled and environmentally and sustainably sourced materials wherever possible and financially feasible. For example, using trees felled onsite for seating and fence work, and sourcing fibreglass heritage litter bins to replace ironwork bins. Products made from tropical hardwoods and other unsustainable sources are not used.



Fuel, Fleet & Power Tools

Fleet

As part of an ongoing trial within the Lampton group, the GS fleet use an alternative diesel product, Hydrotreated Vegetable Oil Fuel (HVO). HVO meets OEM fuel specifications and is certified to be a 90% CO2 saving on normal diesel. This efficiency is better than current electric vehicles and is a great stop gap to future technologies given the age of the HGV fleet. It is hoped that a switch to HVO will help GS transition to low carbon technologies in a systematic way, giving time to manage various operational constraints limiting early adoption of electric vehicles.



Power Tools

GS are continuously trialling the use of electric power tools as alternative to 2 stroke machinery. They currently utilise several battery powered trimmers and blowers and continue to evaluate the effectiveness and development of the technology, and replacing older traditional machinery as it reaches end of life.





Biodiversity & Heritage

We manage our parks and open spaces by ensuring that where possible we maintain a diverse range of age, species and structure in the canopy, understory and herb layers and aquatic spaces. This is achieved by:

- Managing site specific habitats such as acid grassland, mature veteran trees, rivers, ponds, and woodlands.
- Supporting the borough's wildlife through interventions such as birds and bat houses, stag beetle loggeries, aquatic ledges and educational signage.
- Enhancing existing aquatic and terrestrial habitats to support a diverse range of flora or fauna.
- Exploring opportunities to create new habitats such as wildflower meadows, native hedge planting, aquatic ledges, and copses.
- Consider introducing sympathetic mowing regimes where suitable, for example leaving areas of rough grassland around trees.
- Recognising the effects of climate change e.g., drought, wildfires, floods, disease, biosecurity.
- Prioritising sustainability through resilient planting e.g., drought tolerant trees and plants.
- In 2021 LBH commissioned a baseline report of Invasive species Parks and open spaces portfolio, surveying 195 sites. This information was used to procure a specialist contractor to remove targeted species over a five-year period beginning in April 2025 and running for 5 years. This will seek to eradicate: Japanese Knotweed, Giant Hogweed and floating Pennywort, and provide advice on how to deal with Himalayan balsam.
- Biosecurity – Anyone responsible for plant supplies must ensure that all plants and associated soil are supplied free of pest and disease at all points in the supply chain. To achieve this, GS consider the latency period and life cycles of all pests and diseases. Special attention to biosecurity is given to imported stock.
- GS procurement will always prioritise suppliers that are able to demonstrate a supply chain audit trail (for example, are part of a recognised Plant Health Assurance scheme) that ensures plant material sourced within the UK is under a regime of biosecurity-aware production and follow nationally agreed good practice guidelines.

The Nature Recovery Action Plan (NRAP) is a part of Hounslow's Greener Borough Framework and was adopted in 2023. A stakeholder board -Nature Recovery Stakeholder Board (NRSB) was launched in February 2024 and is led by the Nature Recovery Manager with quarterly meetings held in various locations across the borough. Currently planning the 4th meeting to be held in February 2025. More information can be found [here](#).



Ecological Survey 2023

Redlees Park comprises of hardstanding -footpaths and a car park; amenity grassland appears to be regularly mown and comprises of meadow grasses, dandelion, nettles, ivy leaved speedwell, garlic mustard, ryegrass, and sow thistle. Scattered mature or recently planted line of trees and orchards-ash, willow, birch, oak, maple, cherry, apple, pear, quince, damson, white mulberry, gage cherry plum, sycamore; introduced shrub-which is well established, and tall ruderal along the boundary of the site comprising nettles, buddleia, daisy, and hogweed.



Pictures taken during the site walkover exhibit habitats opportunities for the presence of protected species at the site.

From the pictures, its noted that there is moderate to high potential for bats to roost within the survey area and bat species may forage and commute over the lines of trees, along the western and eastern boundary of the site.

There is no siting of reptiles during the walkover considering the presence of habitat-dead leaves hibernacula around north-eastern boundary of the site. The mown amenity grassland is considered suboptimal habitat for common reptile species due to regular disturbance by mowers.

There is potential for common bird species for example songbirds, crow, and pigeons to nest within the hedge and the line of trees. Bird boxes were recorded on the mature trees during the site visit. Insects like bees and butterfly were recorded during the site walkover, and meadow flowers provide suitable habitat for their numbers and diversity.

Considerations:

- Installation of range of bat boxes on the trees to provide roosting opportunities for crevice dwelling bat species.
- Install bird boxes on any mature trees.
- Native species of local provenance should be used for any new planting on site to support the action plans for pollinators in England.



Community Involvement

This is crucial to the management of Redlees Park and will continue to be of the utmost importance.

Friends Groups

The Council works closely with interested parties and individuals of Redlees Park and encourages them in their efforts to apply for grants and to organise volunteer days and events. We also engage with other community groups and third parties to encourage and ensure opportunities for the needs and requirements of a diverse borough population.

The Park does not currently have a Friends group. A group of site stakeholders took part in a recent master planning exercise however this has not progressed into a dedicated friend's group. Therefore, the Council engage with interested parties and individuals when necessary.

These include; [The Isleworth Bowls Club](#); [Redlees Artist's Studios](#); [The Isleworth Society](#); LBH Play Centre and Library; Lampton Leisure who have taken over operation of LBH leisure sites from Nov 2020, [Isleworth Explorers](#) and interested individuals.

The Parks Team provide support for applications to the Council's Thriving Communities Fund. More information about the scheme can be found on the Council webpages [here](#).

Hounslow Friends of Parks Forum holds quarterly meetings. The forums are facilitated by [Habitats & Heritage](#) who are a west London based organisation who help support new and established Friends Groups. The Friends of Parks provides a support network, and to provide opportunities to build relationships that are based on collaboration.

Volunteering

The Council and GS work with the public to inform, educate, and volunteer in managing habitats through event opportunities and specific projects such as school planting in greenspaces, green gyms, tree planting and habitat surveying. Community involvement and engagement in nature conservation projects helps to increase the health and wellbeing of our residents.

The GS Countryside Team help manage and coordinate several volunteer groups across the borough. More information can be found on the Parks Hub webpages [here](#). The Council also has an Environmental Champions Scheme, more information available on the website [here](#)

The Conservation Volunteers previous works:

The TCV Green Gym have introduced bird boxes, a dead hedge, whip planting bulbs and are planning a wildflower strip.



Marketing

Promotion and marketing of Redlees Park is carried out by means of a range of measures to ensure that local people and visitors to the borough are aware of the facility.

Entrance Signage

The notice boards on site are used to promote work in the park and activities and events held at Redlees Park. This site is also the first park to see the installation of Hounslow new parks signage.



Signage Refresh

In 2021, the Parks Team secured significant funding for a borough-wide refresh of all parks and open spaces signage.

The signage was designed in partnership with Friends, local community groups and other stakeholders to ensure they were designed in consultation with our park's users. The design principles focused on inclusivity, using pictograms and maps to illustrate the facilities available in the park and the surrounding area. This programme was completed in Autumn 2024.

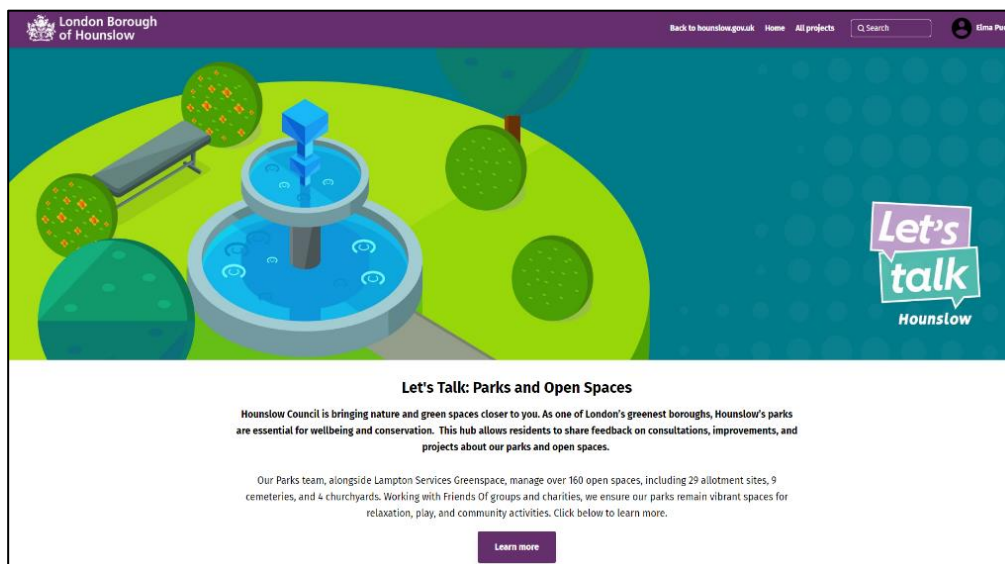
For more information and examples of the new signage please visit the Council webpages [here](#).

Web & Press

The Council's website has a dedicated Parks and Open Spaces section which can be found [here](#). You can find general information about the service, with useful links, advice, and reporting channels for customers to use.

Parks Hub

The Consultation and Engagement platform Let's Talk Hounslow has a new dedicated Parks Hub which includes current consultations, surveys, and live projects, as well as a digital noticeboard. Since the launch in February 2024, the site has had over 10,000 visitors to the homepage. To view the hub visit [here](#).




Hounslow also has several other websites which are designed to engage with the wider community about our services and the opportunities available in Hounslow. Please visit, [HounslowConnect](#) and [InHounslow](#) for more information.

Promotion through the London National Park City www.nationalparkcity.london

- London National Park City Mini-Guide for Hounslow, celebrating Hounslow's great outdoors [Hounslow's Mini Guide](#)



The Council also has an active social media presence on [Facebook](#) and [X](#) with the handle @LBofHounslow.



To create community awareness for all its facilities the Council regularly produces articles and press releases about activities and facility development. The Council publishes a regular newsletter, Hounslow Matters, which is provided to all residents and includes news and information about our services, including parks and open spaces. To download the latest publication please follow the link [here](#).

Events

The Council encourages the hire of parks to appropriate organisations for commercial and community events. Events are held in accordance with the Parks and Open Spaces Events Policy found on the council webpages [here](#).

Regular events hosted at Redlees:

- School Sports Days - closed events for children and their families.
- Funfair - regular funfair, usually twice a year.
- Sports - PE lessons, personal trainers, runners.

2023:

Christmas at Redlees – A one-off winter celebration organised by the council in partnership with on-site organisations at Redlees Park, Isleworth Bowls club, and Redlees Art Studios. This community event featured a Christmas market, reindeers, Santa's grotto, arts and crafts activities, and a selection of amusement rides. The event was attended by just over 600 people with many of the activities either low-cost or free.

Health in the park - The Hounslow Borough Based Partnership (BBP) collaborated with Hounslow Council, health organisations, voluntary groups, and community partners to organise an engaging health and wellbeing event at Redlees Park. Activities included outdoor yoga, football, food workshops, painting, tennis, competitions, outdoor games, meditation, treasure hunts, Singing from the Brain, and much more. This event looks to be an annual offering but not necessarily at the same location.

2022:

Films on the Green- A new initiative as part of the Summer of Culture project that happened in 2022. Redlees was chosen as one of the few sites to host the first free outdoor cinema experience hosted by the Council in our greenspaces. Almost 1000 people attended, brought picnics and some even cosplayed from relevant films to show their enthusiasm.

Bringing communities together and watching films on the big screen for free will potentially be back in 2025.





How do we know we have arrived?

Monitoring & Review

This management plan has been designed as a live document that will guide development in the park over the next five years. Progress will be subject to monitoring and review to measure success and delivery of aims.

Members of the Greenspace Parks team regularly visit the site to monitor progress against the action plan; the results of these visits are then discussed at monthly management and meetings with LBH officers and relevant stakeholders.

LBH Parks Officers work closely with GS and the Friends group to monitor progress and discuss future. This includes:

- Performance against the requirements of the Management Plan
- Provision and analysis of infrastructure surveys
- Provision and analysis of asset surveys
- KPI's and performance monitoring

An annual SWOT analysis will be carried out by all stakeholders and, together with the information gathered from all the monitoring methods will be recorded and fed into annually updated management plans.

GFA Judges feedback and award outcome will enable continuous learning, development and improvement by all partners involved in the award process. Discussed at monthly Parks and GS management meetings and meetings with stakeholder.

Action Planning

Our action plan for Redlees Park is provided in Appendix 1. This plan is based on an evaluation of the SWOT analysis together with other projects and plans raised by the Friends group. The action plan lists actions and categorises based on timescales and the Green Flag award criteria. The plan will also allocate ownership for each task to the key stakeholders.





Appendix 1

Redlees Park | Green Flag Award | Action Plan Updated 2025

Key to Action Plan

Green Flag Award Criteria

W	Welcoming Place
H	Healthy, Safe and Secure
VM	Well Maintained and Clean
S	Sustainability
BH	Biodiversity and Heritage
C	Community
Mkt	Marketing
Mgt	Management

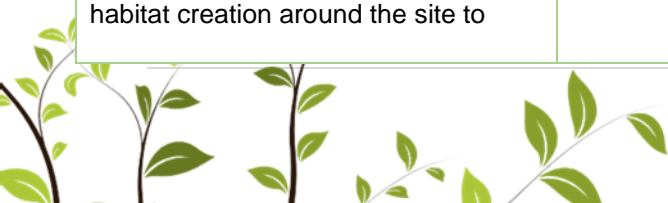
Stakeholders

LBH	Parks Service Management Team
GS	Lampton Greenspace
RPUG	Redlees Park User Groups

Delivery Timescales

S	Short term (less than 1 year)
M	Medium term (1 to 3 years)
L	Long term (3+ years)
O	Ongoing

MANAGEMENT ACTION	STAKE-HOLDER	GREEN FLAG CRITERIA	TIME-SCALE	STATUS 2025
Review of all infrastructure	LBH	W, H, WM	S	Infrastructure plan to be prepared for 2022/23
Improve entrance on Worton Road and Twickenham Road	LBH, GS	W, H	O	Development of Worton road and Twickenham Road entrances in progress but further funding required. Landscape design proposal is being worked on at present.
Garage at Worton Road entrance, explore future use	LBH	W, H, WM, C	O	The council has reviewed the outcome of the Building Asset Condition Survey in 2021
Review path network and explore possibilities for widening and walking tract	GS	H, WM	O	Funding bids unsuccessful but will continue to identify options
Anti-social behaviour – continue stakeholder engagement and targeted enforcement.	LBH, GS, RPUG	W, H	O	Ongoing
Re-use green waste	GS	H, S	O	Any site generated wood chipping is reused on site
Maintain a healthy tree stock with opportunities identified for new tree planting.	LBH, GS, RPUG	W, H, WM, S, BH	O, S	All tree works are carried out by GS in compliance with LBH policies and procedures and UK legislation
Explore opportunities for enhanced hedge and meadow planting and habitat creation around the site to	LBH, GS, RPUG	BH	S	TCV Green Gym creating additional habitats. In 2021 the Council renewed its Biodiversity Action Plan as part of the wider



MANAGEMENT ACTION	STAKE-HOLDER	GREEN FLAG CRITERIA	TIME-SCALE	STATUS 2025
increase amenity value, biodiversity and reduce maintenance.				Greener Framework with a new Nature recovery plan. Green Gym is now back on site, exploring plans to install dead hedge around a nature area in one corner of the site.
Continue to consult and engage with the local community	LBH, GS	C	O	Hold a Redlees Open Day, when safe to do so, and promote the establishment of a Redlees Park user group. Revisit with the local community
LBH to continue to facilitate events within Hounslow's parks and open spaces as part of an active community engagement agenda.	LBH	C	O	
LBH to facilitate opportunities for education, culture, and heritage at the site.	LBH, GS, RPUG	C	S, M	
Support Fitness and Sport activities in the park	LBH, GS		O	Increased positive use of the park through activity
Continue to publicise the park through LBH website, social media platforms and notice board. Also, borough wide campaigns, including achievements, initiatives, and announcements.	LBH, RPUG	C	O	Ongoing
Support other positive promotion of the park through various media platforms.	LBH, GS, RPUG	Mkt	O	Ongoing
The management plan to be reviewed annually and the action plan to be updated annually	LBH, GS	Mgt	O	Ongoing

Appendix 2

Annual Maintenance Work Schedules

The following table provides an overview of the annual maintenance work schedules. All frequencies are subject to seasonal variations, resource, and specific horticultural requirements. They are reviewed annually by the Operations Manager at GS to ensure they remain suitable and reflect any significant site changes. See “Meeting the Green Flag Criteria” section for more detailed management information.

Service	Frequency/Management information
GM Summer works (March - October) <i>Amenity grassland cutting</i> <i>Rough grassland cutting</i> <i>Wildflower meadow cutting</i> <i>Hedge & shrub cutting</i>	Managed by the Grounds Maintenance Teams Once every 3 weeks 1-2 cuts per summer season 1-2 cuts per summer season 1 “reduce cut” dependent on horticultural requirements
GM Winter works (October – March) <i>Hedge & shrub cutting</i> <i>Pond clearance</i> <i>Leaf clearance</i>	Managed by the Grounds Maintenance Teams 1 “hard cut” dependent on horticultural requirements As required, dependent upon size and conditions As required, from hard surfaces and grass areas
Cleansing <i>Litter collection & bin emptying</i> <i>Non-offensive graffiti removal</i> <i>Offensive graffiti removal</i> <i>Fly tip removal</i>	Managed by the Cleansing Teams [site specific] Daily, including bank holidays. Within 7 days of notification Within 24 hours of notification Within 48 hours of notification
Playgrounds <i>Safety inspections</i>	Managed by the Playground Inspectors 1 visual inspection per week minimum (based upon site usage), quarterly “operational” inspections, recorded, annual independent inspections by the Royal Soc. for the Protection of Accidents (ROSPA), recorded.
Infrastructure <i>Cleansing (bins, benches, signs etc).</i> <i>Lighting</i> <i>Buildings</i>	Various teams/management As required, based on visual inspections and reports Inspections and repairs managed by Hounslow Highways All H&S checks conducted, electrical, fire, water, etc.
Trees <i>Tree inspections</i> <i>Tree maintenance</i> <i>Tree watering</i> <i>Tree planting</i>	Managed by the Tree Team Annually Based on previous inspections, prioritised by H&S Summer: May – September (for trees under 3 years) Winter: October – March
Site Specific Features & Services <i>Site Attendant</i>	Daily general cleansing and horticultural tasks and to report issues when found.



Monitoring the Annual Maintenance Work Schedules

Members of the Parks Team conduct site visits to ensure that the work schedules are being adhered to and report issues to GS to resolve where necessary. Customer enquiries relating to maintenance issues are also routinely assessed to ensure they are rectified in a suitable and timely manner.

The Parks Team are currently working with the Ward Improvement Team to develop a new monitoring program, which we expect to be deployed in spring 2025.

The program will rely upon the Land Audit Management System (LAMS), developed by the Association of Public Service Excellence (APSE). This is an industry recognised approach, which many local authorities use to monitor the performance of their park services.

The program will also make use of and refer closely to the guidance provided by Parks for London in their recently updated Green Space Quality Manual. This provides valuable insight and understanding as to “what good looks like” and will help to ensure a consistent approach is taken during routine monitoring.

The new monitoring program will be periodically reviewed to help measure its success in improving the parks services. We expect it to help identify where there are issues and trends in performance to inform how best to deploy resource in the areas which require it the most.

For more information regarding the tools and approach that will be used for the monitoring program, please visit the [APSE LAMS](#) page and download the Parks for London [Green Space Quality Manual](#).





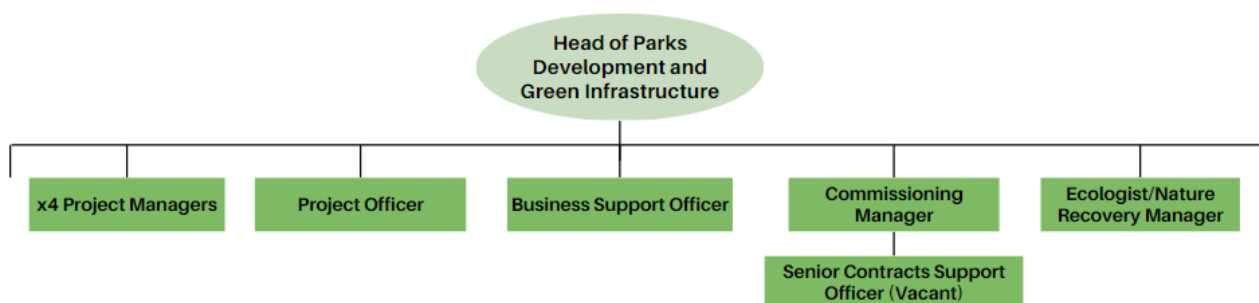
Appendix 3

Management Structure & Responsibilities

Redlees Park is owned and managed by the LBH and maintained by GS. Information below sets out the management structure and describes the roles and responsibilities of the key personnel involved in managing and maintaining the site.

LBH Parks Service Management Structure

The Environment and Culture Directorate provide the following roles who are responsible for the management, and associated roles, of Hounslow's parks and open spaces:



LBH Head of Parks Development & Green Infrastructure

Senior commissioning role for the management and partnership with GS, senior advisor in relation to parks and open spaces, strategy and policy development, Member's liaison.

LBH Parks Project Managers (x4)

Project development and management, fundraising, community engagement and consultation, implementation, strategy, and policy setting.

Parks Project Officer

Development and delivery of projects, fundraising, community engagement and support Head of Parks.

Commissioning Manager

Supplier performance governance and relationship management, Legal and contracts, Planning/Commissioning, Operational Service delivery and business processes/systems.

Senior Contracts Support Officer

Supplier performance, customer service and casework, community engagement and consultation, project support.

Parks Business Support Officer

Assistance with finance; administration, project support and communications.

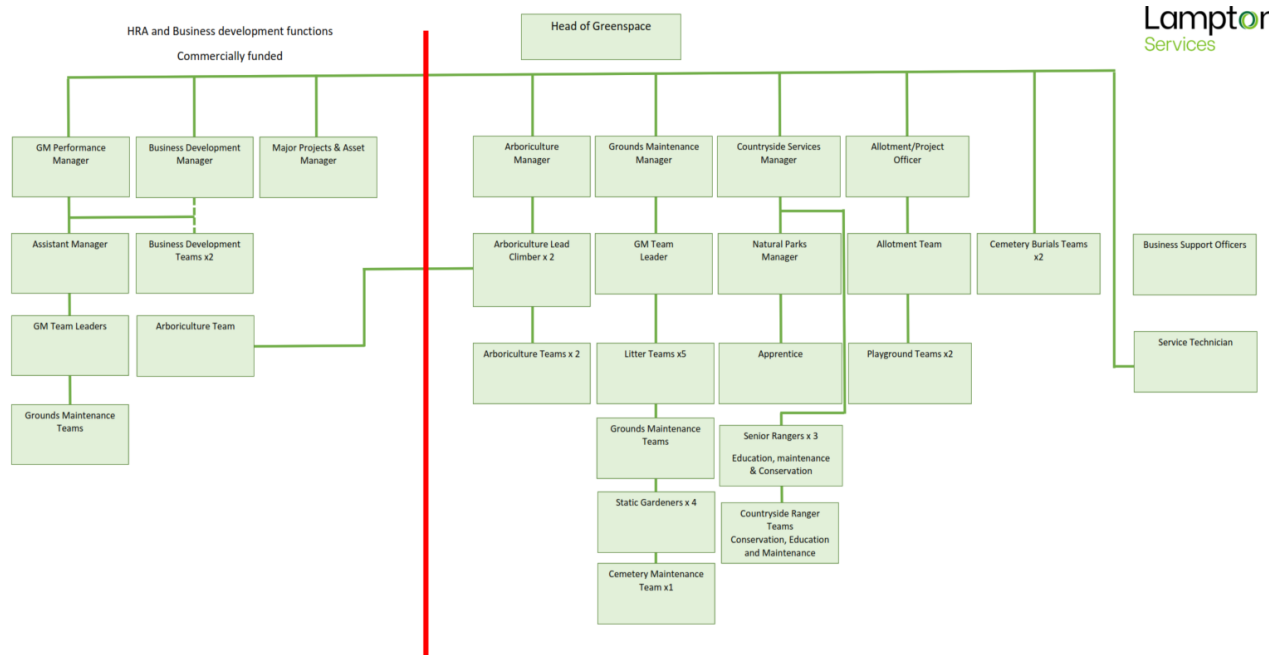
Ecologist & Nature Recovery Manager

Responsible for providing expert ecological advice relating to the management, protection and enhancement of important habitats and species within the borough.



Lampton Services Greenspace Management Structure

The following GS roles are responsible for the management of Hounslow's parks and open spaces:



Head of Service

Responsible for the ground's maintenance service provision. Oversees the delivery of the specification which includes infrastructure.

Projects Manager including the Allotment Service

Responsible for the development of park infrastructure, management of the allotment service, overseeing horticultural standards, schemes, and developments. Main contact for contractors (CDM). Friends and Member liaison.

Countryside Manager

Responsible for the management of the borough's countryside service. This role includes the management of the Ranger team and educational, animal husbandry, environmental and wildlife operations/programs associated with these locations.

Planned Maintenance Manager

Responsible for the management of the operational resources to deliver the ground maintenance services for the parks and open spaces sites.

Performance and Support Officer

Customer Service functions- Freedom of Information (FOI), customer enquiries, councillors' enquiries, and monthly statistics; technical project support.

Tree Team Manager

Responsible for the teams that carry out the inspections and maintenance of the boroughs 85,000 park trees. Oversees all tree planting schemes for the council and community groups in parks. Managing and mapping/recording of invasive species. Planning application guidance to LBH.



Playground Inspectors x2

Visual, operational, and minor repairs of playgrounds. Inspected annually external contractor.

Operational Teams

Grounds maintenance is delivered using mobile teams. These teams provide the Grass cutting, horticultural tasks, general maintenance, litter bin emptying and litter picking.

Business Support Officer

Provides administration for fleet, handles finances and overtime schedules.



London Borough of Hounslow
Hounslow House, 7 Bath Road
Hounslow TW3 3EB
www.hounslow.gov.uk

Tel: 0208 583 5555



**London Borough
of Hounslow**

Lampton
Services
Greenspace