

**GREEN FLAG MANAGEMENT PLAN 2020-25**

---

# Lampton Park

# 2020-25



**London Borough  
of Hounslow**

**Lampton**  
Services  
Greenspace

*Updated 2025*



# Foreword

The London Borough of Hounslow has some superb greenspaces that everyone can be proud of. They are places where people can relax, enjoy nature, play, or take part in cultural and historic activities and recreation. They are essential for the health and well-being of our residents, and they are vibrant spaces that provide a borough-wide green infrastructure for our communities.

In Hounslow, we are committed to stimulating a strong and robust green recovery related to our Greener Borough Framework and Climate Emergency. The Council's Green and Blue Infrastructure Strategy plays a major role in delivering the Greener Borough Framework and sets out key priorities for our greenspaces in areas such as health and wellbeing, regeneration, climate change and nature recovery.

The London Borough of Hounslow considers the Green Flag Award process as a tool towards positively developing our greenspaces within this strategic framework and in partnership with our communities. It contributes to providing a vision, with clear objectives and priorities for how the Council and its partners would like to see greenspaces managed in future years.

This plan is not only the commitment from the Council to improve our greenspaces but is an important recognition of the support and commitment of the friends of parks, community groups, local clubs, third sector and partners who share our visions and work with us to respond to our green agenda.

# Acknowledgements

This plan has been produced by Lampton Services Greenspace\* (GS) and the London Borough of Hounslow (LBH) Parks Team. In addition, it is important to acknowledge the great contribution from all interested groups for their commitment and dedication in supporting the development, promotion, and management of Lampton Park.

\*Lampton Services Greenspace (GS) is part of the Lampton Limited Group and is a company wholly owned by London Borough of Hounslow with an aim of returning value to the Council representing a bold new ambitious approach.





# Contents

<b>Foreword .....</b>	<b>1</b>
<b>Acknowledgements .....</b>	<b>1</b>
<b>Purpose of the Plan .....</b>	<b>3</b>
<b>Where are we now? .....</b>	<b>5</b>
<b>Site Description &amp; Facilities .....</b>	<b>5</b>
<b>Detailed History .....</b>	<b>6</b>
<b>Recent Developments .....</b>	<b>8</b>
<b>Where do we want to go?.....</b>	<b>12</b>
<b>Green Flag Analysis.....</b>	<b>12</b>
<b>SWOT Analysis.....</b>	<b>13</b>
<b>How do we get there?.....</b>	<b>14</b>
<b>Vision &amp; Objectives .....</b>	<b>14</b>
<b>Meeting the Green Flag Award Criteria.....</b>	<b>15</b>
<b>Management of Lampton Park .....</b>	<b>15</b>
<b>Delivery Partners .....</b>	<b>15</b>
<b>A Welcoming Place .....</b>	<b>16</b>
<b>Healthy, Safe &amp; Secure .....</b>	<b>16</b>
<b>Well Maintained &amp; Clean .....</b>	<b>18</b>
<b>Environmental Sustainability.....</b>	<b>22</b>
<b>Biodiversity &amp; Heritage .....</b>	<b>25</b>
<b>Ecological Survey 2023.....</b>	<b>26</b>
<b>Marketing .....</b>	<b>28</b>
<b>How do we know we have arrived?.....</b>	<b>33</b>
<b>Appendix 1- Action Plan.....</b>	<b>34</b>
<b>Appendix 2- GS Works Programme .....</b>	<b>37</b>
<b>Appendix 3- Management Structure &amp; Responsibilities.....</b>	<b>39</b>





# Purpose of the Plan

The Management Plan for Lampton Park has been prepared by LBH and Lampton Services Greenspace. The plan is specifically developed for the individual site with a dedicated Green Flag Action Plan.

This plan has been developed following detailed assessment of the Green Flag Award criteria and a comprehensive collaborative review of the existing uses, management, and maintenance of Lampton Park.

As part of the development of the plan, detailed consultation has taken place with the Lampton Services Greenspace parks maintenance and management team and LBH officers.

The Management plan is a 'working document' that brings together all the information relating to Lampton Park and will be updated, revised, and annually reviewed. This plan has been developed based on the Commission for Architecture and the Built Environment (CABE) Space document *"A Guide to Producing Park and Greenspace Management Plans"* and the *"Green Flag Award Guidance Manual"* guidelines.

## Policy & Strategic Context

Actions and aims within this management plan are both guided by, and relate back, to wider Council strategies. The development of parks and open spaces are a vital component of the Council's Corporate Plan 2022 – 2026. Our work during this period is focused on six priority ambitions for a borough that is greener, healthier, cleaner, thriving, safer, and livable. Green infrastructure contributes in many ways to helping us achieve these priorities.

A key approach of Hounslow Council is working under the concept of "One Hounslow" where services are delivered without silos, working for specific outcomes with several internal council departments, community groups, NGOs, and government bodies.

Parks and open spaces play an important role in the approach highlighted in the Council's Joint Health and Wellbeing Strategy with start, live and age well, preventing ill-health, which in turn has an impact on reducing costs within the wider economy, the Council, and the NHS.

The Council's Equalities and Diversity Strategy 2023, created to improve equality, diversity, and inclusion - sets out an ambitious approach to target policies and funding to the areas which need them most to thrive. The strategy is based on three pillars - Equality by Place, Equality by Group, and Equality as Employer. Hounslow Council has committed to transform the opportunities and life-chances of communities in the borough's 30 most disadvantaged neighbourhoods.

The Council approved the Greener Borough Framework 2020-30 which seeks to provide a high-level framework to deliver on the Council's ambition and aspirations for the borough through enhancing our environment and reducing our use of resources. The framework is part of a wider ambitious green agenda bringing different people and organisations together to discover, engage, innovate, and deliver.





The adoption of the Green and Blue Infrastructure Strategy and Nature Recovery Plan are the pillar of the strategic framework for the development of our parks and open spaces and their management plans through the Green Flag Award process.

#### Useful Links:

- [Corporate Plan 2022-26](#)
- [Climate Emergency](#)
- [Green Infrastructure Strategy](#)
- [Greener Borough Framework](#)
- [Nature Recovery Action Plan](#)
- [Equalities and Diversity Strategy](#)

### Parks Funding

The Council's Parks service is funded by an annual salary and contract revenue budget for base line ground maintenance activities, and provided by our service providers, Lampton Services Greenspace, to maintain all of Hounslow's parks and open spaces, including allotments, cemeteries, trees, countryside and other workstreams.

Current capital funding has been allocated through a parks improvement project, and sites which require improvement will be prioritised. This funding will cover 2 years of project delivery and staff resourcing 2023 – 2025. Other capital funding is obtained via Community Infrastructure Levy (CIL); S106, the Council's Thriving Communities fund (local CIL) and other grants and initiatives. These are applied for annually or as necessary and are based on need and strategic investment required by both the Council and local communities.





# Where are we now?

## Site Description & Facilities

Lampton Park surrounds Hounslow's former Civic Centre and consists of two main areas. The north with playing fields, area of landscaping including the Covid Memorial Garden and the south which is the more formal park that includes the playground, tennis courts, flower beds, small pond, and historic monuments. The west entrance from Harte Road an area is maintained for nature conservation. The park is surrounded by native and non-native trees and on the site of the old crazy golf course there is a nature area and a cycling hub as you enter from the west Bulstrode Avenue entrance.



### Site Information

**Name:** Lampton Park

**Contacts:** 020 8583 5555

**Web:** [www.hounslow.gov.uk](http://www.hounslow.gov.uk)

**Designation:** Open Space

**Size:** 3.14ha

**Byelaws:** A copy can be downloaded at [www.hounslow.gov.uk](http://www.hounslow.gov.uk)

**Access:** open access at all times

**Transport: Train:** Hounslow Station

**Buses:** H20/120

**Local Facilities:** Playground, tennis courts, nature area, flower beds, rose garden, memorial garden, pond, and orchard.

**Address:** Lampton Road, Hounslow

**Email:** [parks@hounslow.gov.uk](mailto:parks@hounslow.gov.uk)

**Ownership:** London Borough of Hounslow

**Tube:** Hounslow Central

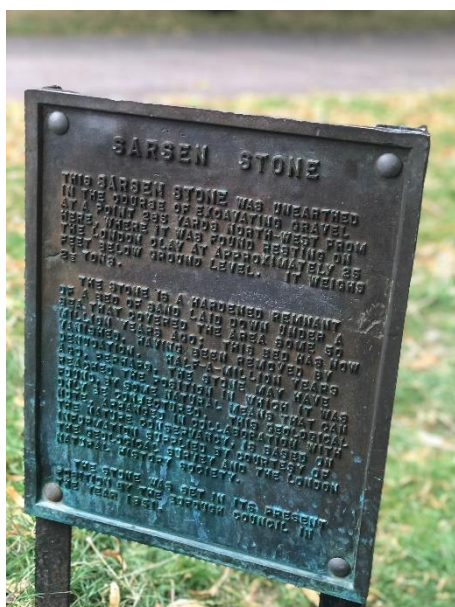
**Parking:** Limited Street parking

## Detailed History

Lampton Park was laid out on land previously used for agriculture, part of which was an orchard, which was purchased for c. £10,000 by the Heston & Isleworth Urban District Council in 1925, and which eventually opened in 1930, the delay caused by some controversy over the elaborate nature of the plans when the Council applied to the Ministry of Health for approval of a loan of £12,809 for the cost of layout. It was opened on 31st May by George Lansbury MP, First Commissioner of Works, at 'a memorable function in the history of the urban district', the entertainment included musical performances, dancing, gymnastics, community singing and exhibition tennis and bowls matches.

It was laid out by the Park Superintendent, with a large and elaborate rose garden as its main feature. Sports facilities for bowling, putting and tennis were provided as well as for cricket, hockey, and rugby. Lampton Park was one of the parks used for the Charter Celebrations in October 1932 when the UDC became a Borough Council.

In 1951 a Sarsen Stone was set up in the park, which had been unearthed in 1926 from a pit of the Hounslow Sand and Gravel Co.'s works at Heston.



Five Irish yew trees, over 210 years old, were transplanted from the grounds of Heston Manor House to the new park and the bandstand was 'the last word in respect of acoustic properties. The main feature of the park was the large rose garden, 130 ft in diameter, with central circular lily pond. In 1928, the Park Superintendent described the proposed layout of the rose garden, which was to accommodate some 1,250-1,400 roses planted in groups of colours: 'hybrid tea, hybrid perpetuals and dwarf polyantha varieties would be chiefly grown.

Standards would form centre dot plants in each of the circular beds. Surrounding the garden on each side would be a shelter belt of trees and shrubs, and along the inner face of these shrubberies' rambler roses grown in pillar fashion would complete the scheme.' A 100-ft greenhouse was also proposed: 'one of the most important assets in public park work is the provision of a suitable plant nursery'.



The sports provision in the new park included hard and grass tennis courts, a bowling green and 18-hole putting green with a small pavilion built to serve as a ticket office.

Other areas were provided for cricket, hockey, and rugby. Both images above were taken of the park around 1965.

A Sri Chinmoy Peace Mile was established in Lampton Park. Sri Chinmoy was an important advocate for world peace, and a keen runner; the first example of a Peace Mile had been set up in London in the International Year of Peace, 1986.





## Recent Developments

### Aspirations 2025

Lampton Park will be receiving several improvements to the space in 2025/26 as part of a Make your Mark project. A project which examines opportunities to address some of the VAWG (Violence Against Women and Girls) issues through increasing wayfinding, improving existing entrances/exits, develop seating areas, create interpretation boards, and increase activation, in a bid to make our parks safer, accessible, and inclusive.

### Achievements 2024:

Lampton Park Community Garden has been established on one former rose bed beside the tennis courts, funded by a small pot of funding and as part of the Grow for the Future project by the UK Shared Prosperity Fund. The garden contains four raised beds, fencing, a gate, vertical planters, tyre planters, a wormery, composter, bug hotel and wildflower meadow. It also has a domestic water butt which is attached to a storage container. In this space from May 2024 till December 2024, pop up workshops have been held by Cultivate London and Urban Trailblazer which residents and Lampton School students have attended to learn about food growing, share their own knowledge and contribute to a community harvest.



From this, Friends of Lampton Park has been established, of which they have plans to develop night walks, bat walks, nature walks, community events and protection of the current ecology and wildlife within the space.

As part of our Access Improvements and Urban Greening project, the former flower beds surrounding the pond were converted into wildflower meadows and home to two bug hotels, to encourage pollinators and wildlife. This was planted in conjunction with the Volunteering in Parks program, delivered by the Countryside team, commissioned by the UK Shared Prosperity Fund.



In December 2024, winter woodland works took place to raise the canopy, create natural surveillance and tidy up overgrown vegetation as an opportunity to encourage more use of the space, sense of belonging and eyes on the park. This will look to see a natural trail developed in 2025/26. Works included reducing undergrowth and creating several pathways, clearing vegetation, coppicing hazel, thinning out trees and raising tree canopy.

Lampton Park discussed and explored through a VAWG in parks and open spaces steering group, which involves stakeholders such as police, community safety, countryside, rough sleeping unit and domestic violence unit.

Established new Volunteering in Parks initiative program – Lampton park being one of six sites across the borough. Led by Lampton Services Greenspace Countryside Team, funded by the UK Shared Prosperity Fund. On average has encouraged 67 volunteers and occurs every Thursday from 2pm – 4pm and the first Sunday of every month.



Lampton Services Countryside Rangers are delighted to announce our new 'Volunteering in Parks' programme. Community volunteering initiatives are a fantastic way to help improve your local green spaces and immerse yourself in nature, whilst also learning new skills, meeting new people, and improving general health and wellbeing.

**EVERY THURSDAY 2PM-4PM**  
AND THE **FIRST SUNDAY OF THE MONTH 10AM-12PM**

**Meeting at the pond**  
(what3words location ///lift.dish.audit)

**Tasks could include:**

- Bramble Clearing
- Tree Coppicing
- Glade Creation
- Wildflower Meadow Creation
- Litter Picking
- Planting
- Pond Enhancement
- Wildlife Surveys

For more information, please contact Lampton's Countryside Rangers at [Countryside@hounslow.gov.uk](mailto:Countryside@hounslow.gov.uk) or contact the conservation team by phone on 07929 755557







### **Achievements 2023:**

The inspiration of a new planting bed at the flagpole was a key improvement to the main site entrance. In addition, new signage across the site has improved wayfinding and mapping, drawing visitors through and into new parts of site and highlighting key amenities.

### **Achievements 2022:**

In 2022, the COVID memorial orchard was founded, and repairs were made to the paths. Additional planting work to augment the flagpole area was commissioned, to be completed in 2023. A mystery shop conducted; identified infrastructure issues including the bins, signage, and gates. Works to remediate these issues were immediately scoped and implemented where possible, including restoration of grass damaged by vehicle movements and new planting to rejuvenate the ornamental area of the park. Signage has been restored as part of the signage programme, and a larger corporate property review has been addressing some of the building issues within the park.



### **Achievements 2020/2021:**

During 2020 and 2021, the tennis courts were fully refurbished, including new playing surface, nets, and perimeter fence. The access gates at Harte Road were repaired. A programme to repair potholes started and play area repairs were carried out.



**Achievements 2019:**

In 2019, a full restoration of York stone pathways around the pond took place, with a full restoration of the pond with enhanced aquatic features during Feb 2020.

There have been improvements in the play equipment, with a full replacement of a damaged boardwalk. A wooded area in the northwest section of the park has been sensitively managed to make this area less attractive for ASB. A new orchard was planted with 50 fruit trees, i.e., quince, medlar, apple, pear, cherry, and almonds. Section 106 money has been secured for the redevelopment of the old putting green to amenity grass, an extension of the orchard and creation and enhancement of habitats.

In October 2019, a memorial tree was planted in memory of Krishna, a council employee. A cycle hub was created in 2019 to support those learning to ride and encourage active travel. Potholes have been repaired on service roads and areas adjacent paths on the Harte Road access. New signage will be commissioned following the outcome of a public health funded strategic signage review which aims to promote activity.







# Where do we want to go?

## Green Flag Analysis

The ambition for LBH in partnership with GS and community groups is to continue to work to improve standards and develop parks and opens spaces strategically according to corporate priorities and local needs.

A clear connection between the criteria identified by the Green Flag Award Scheme and the main points gained from the SWOT analysis and site review completed with the Lampton Park interested individuals has helped to establish a comprehensive management plan for this site.

The management plan process is described below the section “How do we get there?”.

## Consultation & Co-design

The Council has a strong partnership with the stakeholders of Lampton Park. Co-designing the future of the park together in most initiatives and opportunities.

Continuous dialogue is in place through regular communication and a quarterly forum where Friends discuss wider issues and learn from each other to improve overall management standards.

LBH works in close partnership with GS with monthly project and development team meetings where the monitoring and progress of these plans are discussed.

LBH engage annually with Friends groups and community groups in compiling these management plan and their progress.

Ward Councillors and the Lead Cabinet Member for Recreation, Public Spaces and Parking are regularly updated on parks development projects and strategies.

Liaison with the Hounslow Met Police and the Councils Enforcement Team on matters around ASB and public safety.





## SWOT Analysis

A SWOT analysis is a management critique to identify Strengths, Weaknesses, Opportunities and Threats to help shape future improvements.

<b>STRENGTHS</b> <ul style="list-style-type: none"><li>• New signage</li><li>• Noticeboard available to highlight environmental and volunteering opportunities.</li><li>• Development of community garden</li><li>• Large play area</li><li>• Resurfaced tennis courts and new nets</li><li>• Nature areas</li><li>• Covered seating.</li><li>• Flower beds and rose garden.</li><li>• Restored memorial garden.</li><li>• Orchard in place on site</li><li>• Repurposed toilet block to create a pre-school Nursery.</li><li>• Bike club (for those learning to ride a bike)</li><li>• Extensive path network for physical activity</li><li>• Park building Asset Survey 2020</li><li>• New COVID memorial orchard thriving.</li><li>• Friends group established</li></ul>	<b>WEAKNESSES</b> <ul style="list-style-type: none"><li>• Conditions of paths (potholes)</li><li>• Rock garden maintenance</li><li>• Condition of signage</li><li>• Condition of soft landscape features</li><li>• Infrastructure reaching end-of-life – bins, gates, pathing, and other items require replacement.</li><li>• Pond restoration needed.</li><li>• Lack of signage to the COVID memorial garden</li><li>• Lack of seating and bin provision</li></ul>
<b>OPPORTUNITIES</b> <ul style="list-style-type: none"><li>• New benches</li><li>• Develop pond/water feature (ornamental and SUDS)</li><li>• Repurposing buildings</li><li>• Promote more community events.</li><li>• Create more wildlife areas/habitats.</li><li>• Create an improved perimeter path with distance marking. Possible Park run location.</li><li>• Install lighting for the tennis court.</li><li>• Create a Multi-Use Games Area in the old mini golf area.</li><li>• Add sport facilities i.e., cricket strip or goal posts.</li><li>• Develop a masterplan.</li><li>• Collection spot for needles and SHARPS</li><li>• Recycling facilities required.</li><li>• Entrance improvements</li></ul>	<b>THREATS</b> <ul style="list-style-type: none"><li>• Anti-social behaviour</li><li>• Oak Procession Moth (OPM)</li><li>• Pressures on current facilities due to increased development</li><li>• Climate change/disease/drought/pests and invasive species</li><li>• Pressure due to high footfall on site (connected to events)</li><li>• Vandalism due to ASB</li><li>• Reputational damage due to recent crime events</li><li>• Fly tipping</li><li>• Rough sleeping</li></ul>

# How do we get there?



## Vision & Objectives

Vision for Lampton Park:

“Lampton Park user groups, the London Borough of Hounslow and Lampton Services Greenspace will work together to create and maintain an exemplary centre for community involvement and enjoyment which is beautiful, wildlife friendly, sustainable, resilient to climate change, safe and accessible to all.”

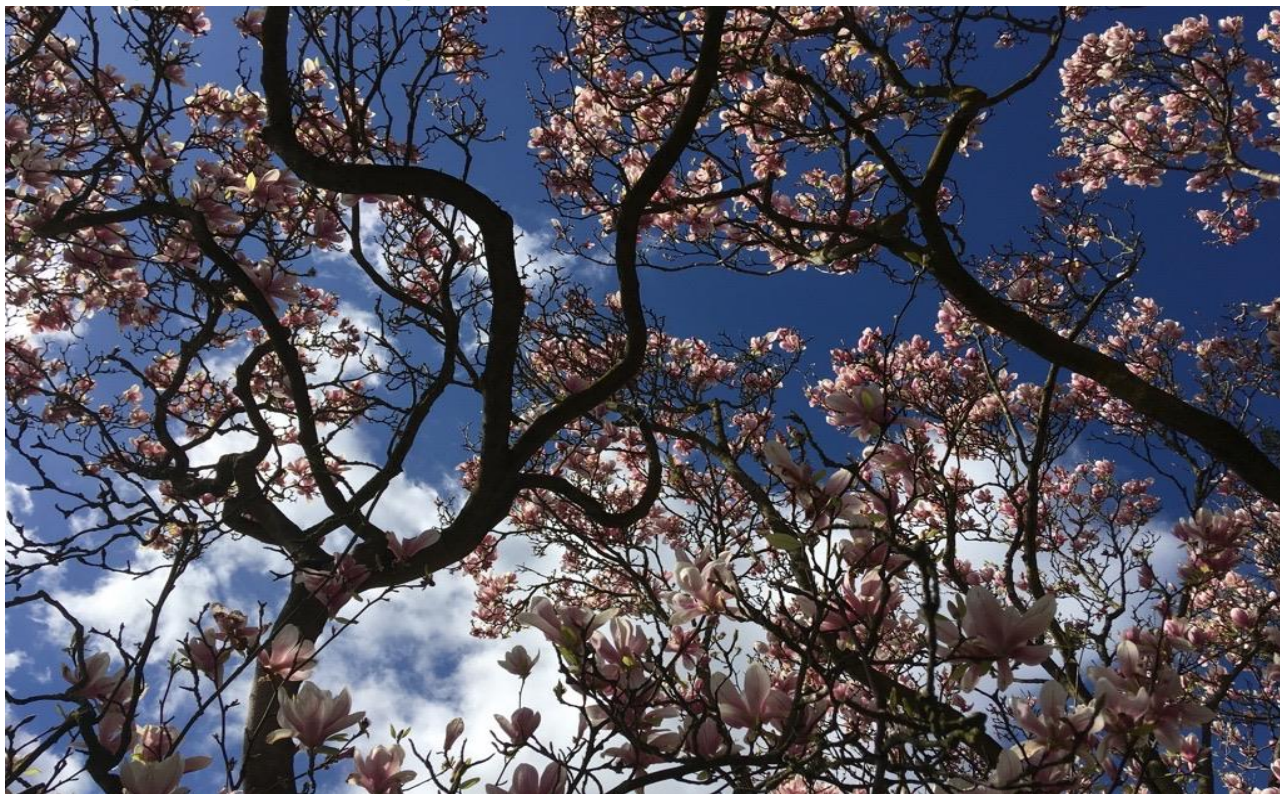
### Key objectives for Lampton Park are:

- To continue to work closely with Lampton user groups of the facilities to adequately maintain and improve the facilities.
- To ensure that Lampton park is a place that is secure, safe to use and is clean and well maintained.
- To ensure that the management of the landscape maintains the heritage character of the park.
- To ensure that the park is promoted and managed to provide a high-quality service for the people using it.
- To continue to encourage and promote community involvement in the management of the park.
- To ensure that the management of the park protects and enhances the biodiversity of the site and borough.
- To promote health and well-being
- Creating opportunities for connecting green spaces for wildlife and increasing the boroughs ecological resilience and connectivity





## Meeting the Green Flag Award Criteria



### Management of Lampton Park

This sets out guidelines and general principles to be followed in delivering the vision and objectives outlined above.

Management of the open space needs to deliver high standards of maintenance of the soft and hard landscaping of Lampton Park within existing revenue budgets and through capital infrastructure funding opportunities.

### Delivery Partners

The Council works pro-actively with interested parties and individuals of Lampton Park, consulting with local people regarding their views of the facilities and any impact that is made on their lives. Continuing this relationship is a very high priority for the management of the open space.

GS are responsible for maintaining all the parks and open spaces within the LBH Parks Service. Maintenance is carried out by the contractors' operatives who have the necessary skills to achieve high and consistent horticultural standards. We also work with environmental volunteering groups, such as the Environmental Champions and others, see the "Community Involvement" section below for more information.





## A Welcoming Place

The following management regimes all play a part in ensuring that Lampton Park continues to be a welcoming area.

### Graffiti Removal

As a part of our aim to make the borough safe, green, and clean we are committed to reducing and removing graffiti. The site will be regularly inspected for graffiti. All graffiti will be removed within 7 days of notification, where the graffiti is racist or offensive it will be removed within 24 hours of notification.

### Signage

Park signage will be kept clean and is regularly inspected, any repairs will be carried out promptly. For more information, please refer to the "Marketing Section" below.

### Pathways

All paths and hard surfaces will be inspected annually. Any necessary repairs will be reviewed, and funding opportunities explored with the aim of rectification as soon possible.

### Visibility

Vegetation will be reduced so that where possible site lines are achieved across the site.

## Healthy, Safe & Secure

The following management regimes all play a part in ensuring that Lampton Park continues to be a healthy, safe, and secure place.

### Health & Wellbeing

We recognise the benefits that our green spaces can make to the health of our residents. We are committed to developing active environments that enhance leisure, sport, physical activity and play opportunities in priority areas.

The Councils [Playing Pitch Strategy](#) in particular, identifies needs for sports facility improvements and sets out priority projects for delivery in partnership with key stakeholders. We work with Council services to ensure that our approach supports the broader Council strategies around health and wellbeing and together with Active Travel team, Leisure Services, Transport, Public Health, Community Development team and the local community we aim to deliver these improvements.

#### Useful Links:

- [Health and Wellbeing Strategy 2023-26](#)
- [Data Hub](#)

### Healthy Hounslow

Healthy Hounslow is a partnership between several organisations supporting people in leading healthier lifestyles; to become more active, eat well and stop smoking. The partners that make up Healthy Hounslow are Hounslow Council, West London Trust, Feltham & Bedfont Primary Care Network, MoreLife, Maximus/BeeZee and Lampton Leisure. The services and support offered by Healthy Hounslow are: Smoking cessation, Health and wellbeing coaching, Healthy weight management, Exercise on referral, Cook and eat sessions, and Community NHS Health Checks.



You can find out all about Healthy Hounslow at our website [www.healthyhounslow.co.uk](http://www.healthyhounslow.co.uk)

### Move More Hounslow Activity Map

- Available online to be [here](#).
- Map shows most parks in the borough that have a multitude of free activities available.



### Site Safety

All GS staff and contractors play an important role in terms of a visible staff presence. All are uniformed and where necessary will wear highly visible clothing. All works will have been risk assessed to ensure the highest level of public safety.

### Control of Dogs

Most dog owners act responsibly and keep their pets under control. However, the council continues to receive comments and complaints from residents about the behaviour of some dogs and irresponsible dog owners within parks and open spaces.

In response to this, the council is holding a public consultation process to gather residents' opinions about a variety of dog control related issues. The feedback will help us decide whether to introduce a dog control public space protection order (PSPO).

PSPOs are aimed at ensuring public spaces can be enjoyed free from anti-social behaviour. They are not about stopping the responsible use of public spaces - but they do provide councils with a tool to tackle persistent issues that are damaging their communities. For more information on the status and findings from the dog PSPO consultation please see the webpage [here](#).

Lampton Park welcomes responsible dog owners. The play area and fenced sports areas are already dog exclusion zones, and this has been reflected in the PSPO consultation.



## Community Safety

Hounslow Community Safety Partnership (HCSP) is responsible for reducing crime, disorder, and substance misuse in the London Borough of Hounslow. Along with other supporting partners, HCSP brings together key local agencies including:

1. London Borough of Hounslow – Safer Communities Team
2. Metropolitan Police Service (Hounslow Division)
3. Hounslow district of the National Probation Service
4. Hounslow NHS Trust
5. London Fire and Emergency Planning Authority
6. [www.hounslow.gov.uk/community-safety](http://www.hounslow.gov.uk/community-safety)

The Council's Enforcement Team have responsibility for overseeing Community Safety in the boroughs' parks and open spaces. They walk through parks to show presence and work with the Parks Team and GS to target regular occurrences of ASB. Occasionally a joint task force operation including those above is required i.e., rough sleeping, food dumping, drinking and drug misuse.

In 2024, Hounslow Council established a Violence Against Women and Girls (VAWG) Steering Group focused on addressing VAWG issues in parks and open spaces. This group identifies short term and long term strategies and opportunities for partnership development. Key approaches include clearing sightlines, encouraging natural surveillance, and fostering a sense of ownership within these spaces through vegetation removal, raising tree canopies, encouraging volunteering in parks, and organising police walk and talks. The team have also been working closely with:

1. London Borough of Hounslow – Domestic Violence Reduction Unit
2. London Borough of Hounslow – Rough Sleepers Unit

Additionally, they contribute to the WA – BCU (West Area – Borough Command Unit) meetings, which include boroughs of Hounslow, Hillingdon, and Ealing.

## Well Maintained & Clean

The following regimes are designed to ensure that Lampton Park is clean and well maintained.

### Grass Maintenance

GS employ several different management approaches to maintain grass areas within our parks and open spaces. Generally, grass areas are managed either as amenity grassland, rough grassland, or as wildflower meadow. Within many of our larger parks, the grass is left uncut as part of the annual No Mow May campaign which was also referred to as [Hounslow's Natural Summer](#) in 2024. For more information see the Council's webpage [here](#).

Lampton Park is mainly managed as amenity grassland, with some areas of rough grassland e.g., in the northern area of the park. There are also plans to create areas of wildflower meadow as well.

### Amenity Grassland

Amenity grassland consists of areas used for general recreation, and formal and informal sports, and can include wide-open spaces or those areas planted with trees and shrubs. These areas are regularly cut during the growing season, to ensure they can continue to be used for recreation throughout the year (see Annual Maintenance Work Schedule). Grass edges, whether they are against paths, fences or walls will be cut at the same time as the rest of the grass using strimmers in most areas.



## Rough Grassland

Rough grassland consists of areas which are cut less frequently generally 2-3 times a year. These are usually areas which are less accessible to the public and help support beneficial insects and small mammals, as well as protect features such as boundaries, hedges, and ponds.

## Wildflower Meadows

Wildflower meadows are areas which are actively managed and promoted as wildlife areas. They are suitably prepared, sown and protected by GS, to ensure they establish and flourish to help promote pollinators, and to increase the biodiversity within the open space.

As part of the council's commitment to invest in green infrastructure, GS help identify additional areas within our parks and open spaces, which can be managed as wildflower meadow, where suitable and in consultation with Friends groups and other stakeholders.

For more information about wildflower meadows and how we manage them, please see the Council webpages [here](#).



## Trees

### Tree Maintenance

Trees within parks and open spaces are subject to inspection by suitably qualified and experienced GS Arboriculturists. This is to identify and remedy any unacceptable risks to people using the sites, or the removal of trees that are extensively decayed compromising their structural integrity. Tree pruning is only carried out where necessary for risk management purposes or where formative pruning is necessary; this approach allows Hounslow's parks to retain a natural landscape with well-formed specimens.

Hounslow Council works closely with Friends, Councillors and Lampton Services Greenspace tree team to consider the tree population within Lampton Park to make improvements and ensure that there is continuity in the way that the trees are managed.



## Tree Planting

During 2023-2024 the Council continues to set ambitious tree planting targets, with plans to plant over 5000 new trees and whips in parks and open spaces. This formed one of the main ongoing targets set out in the [Green Infrastructure Strategy](#).

Since 2020, Lampton Park has had around 500 whips and trees planted around the park.

For more information on tree planting locations and species, please see the Council webpages [here](#)

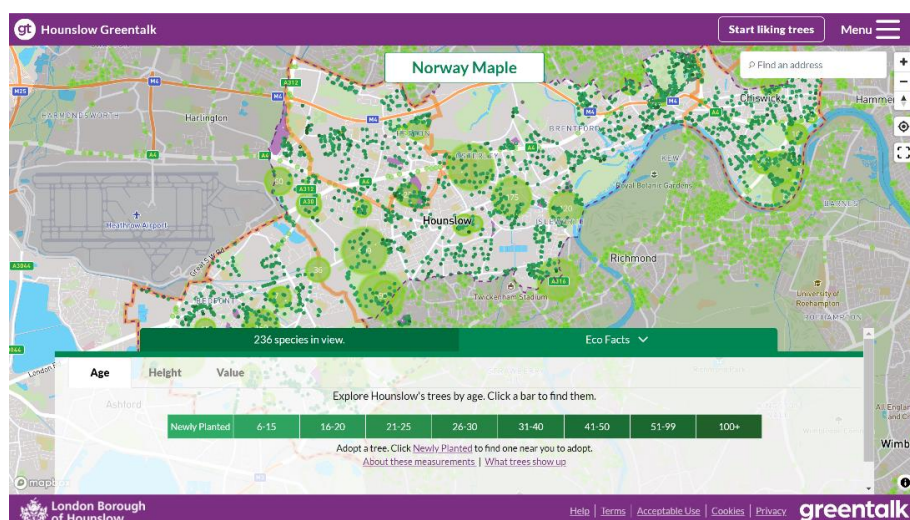
## Greentalk

Hounslow Greentalk is an innovative new platform developed as a bespoke resource for Hounslow residents. It has lots of clever features to help explore public trees and make a positive difference to the environment. The platform provides a unique opportunity for Hounslow residents to adopt newly planted trees and help their borough become greener.

Anyone who wants to find out about trees in the borough can use the Greentalk interactive map to explore their area through a tree focused perspective.

Other features include but not limited to:

- Adopting a tree
- Watering notifications
- Green walks
- Tree giveaways



Over 120,000 trees have been mapped, and around 33,000 can be liked by registered users. Liked trees are saved as favourites and can be accessed through the user profile. The data used to display all the information on Hounslow Greentalk is derived from the council's tree partners who manage the trees in the borough and regularly provide up-to-date information to keep the system as relevant as possible. If a resident is aware of a problem with a tree, Hounslow Greentalk can help them report the exact tree with the right information to the relevant tree partner.

For more information, please visit [Hounslow Greentalk](#)

## Wetland Management

### Sustainable Urban Drainage Design

The Parks team work closely with the Flood Risk team, to help inform on Sustainable Urban Drainage (SUDs) features and design during parks development projects. This approach helps provide ecological and sustainable solutions, to help alleviate flooding within urban areas.

## Ponds & Rivers

Lampton Park has a small pond which is in the middle of a circular bedding and seating area, near to the children's playground. Whilst this is only a small feature it has in previous years been managed and maintained with frogs and other invertebrates and insects being present. However, it's been recognised that its management needs to be reviewed to ensure it remains a haven for wildlife and an attractive focal point within the park.

## Cleansing

The collection of litter is extremely important in maintaining the appearance of Hounslow's parks and open spaces and has a direct effect upon how people treat and respect the site. Litter is collected and bins emptied daily by the GS cleansing crews. Any occurrences of fly tipping are cleared by GS within 48 hours of notification, and we work closely with the Enforcement Team to investigate fly tipping issues where possible.

## Furniture & Fittings

GS ensure that all furniture is clean and will check benches, notice boards and bins on a regular basis. Items will be cleaned when necessary. Any repairs will be reviewed, and funding opportunities explored with the aim of rectification as soon possible.

## Playgrounds

All playgrounds are visually inspected a minimum of once per week (based upon site usage), a recorded quarterly operational inspection, and an annual inspection carried out by an independent inspector to ensure the playground meets ROSPA standards. Any hazards identified are dealt with accordingly and where necessary equipment will be cordoned off whilst repairs are scheduled.





## **Hard Surfaces**

Hard surfaces will be kept clean with litter and leaves removed. Hard surfaces will be maintained in a weed free state. Paths will be kept in a good state of repair and all paths being inspected annually. Any necessary repairs will be reviewed, and funding opportunities explored with the aim of rectification as soon possible. Drains and gully's are inspected regularly as part of the Annual Infrastructure Survey.

## **Buildings & Structures**

GS manage and maintain most buildings and structures within our parks and open spaces. These include both buildings that are open and in use by the public (such as visitor centres, chapels, toilet blocks etc.) as well as disused buildings which are closed to the public. All buildings are managed with health and safety concerns being paramount, with regular visual inspections conducted, and all necessary building regulations adhered to (e.g., fire risk assessments etc.).

There are a several derelict buildings at Lampton Park which remain safe and secure, with various structural and mechanical surveys and asbestos surveys having been conducted to ensure their safety. As with all park buildings, their use and condition are recorded within a database, and they are recognised within the Corporate Property Future Assets Strategy. The development of a community café is a current aspiration for the future if potential funding can be secured to conduct feasibility studies to renovate one of the derelict buildings.

## **Environmental Sustainability**

The following regimes are designed to ensure that Lampton Park is managed in a sustainable way.

### **Litter Recycling**

All litter is taken to Transport Avenue, the West London Waste Authority site within Hounslow borough. It is then loaded onto trains and taken to an energy waste site in Avonmouth, where it is used as a renewable energy source.

### **Green Waste Recycling**

All green waste is either reused or recycled. Grass clippings are spread and left in situ in the park. Wood chippings are used on flowerbeds to provide a compost and a weed control. Other green waste (shrub pruning etc.) is taken to Transport Avenue Waste Disposal Site, where it is then transferred by road to a composting facility for processing.

### **Pesticides**

As a part of our commitment to ensuring a cleaner and greener Hounslow, the use of chemicals to treat weeds was stopped in 2020. This decision supports the Council's ambitions for a cleaner and greener borough and promotes biodiversity and encourages wildlife. This approach is now fully supported by GS in parks and open spaces, enabling the borough to become even more hospitable to plants and animals.

The use of specific herbicides will only be considered when it is not viable to use non-chemical alternatives, for example, controlling the spread of an invasive species such as Japanese Knotweed, as they are especially damaging to the environment.







Removing the use of herbicides does present operational challenges, herbicides have always been considered a cost-effective solution due to their less labour-intensive results. As such GS continue to assess and review their operational schedules to ensure that an adequate resource and suitable approach is applied to control weed growth.

### Peat Use

GS do not use peat, or any peat-based products within Hounslow's parks and open spaces.

### Infrastructure

GS follow the Council's procurement guidelines when sourcing replacement or new infrastructure items. This includes prioritising products made from recycled and environmentally and sustainably sourced materials wherever possible and financially feasible.

For example, using trees felled onsite for seating and fence work, and sourcing fibreglass heritage litter bins to replace ironwork bins. Products made from tropical hardwoods and other unsustainable sources are not used.

### Fuel, Fleet & Power Tools

#### Fleet

As part of an ongoing trial within the Lampton group, the GS fleet use an alternative diesel product, Hydrotreated Vegetable Oil Fuel (HVO). HVO meets OEM fuel specifications and is certified to be a 90% CO2 saving on normal diesel. This efficiency is better than current electric vehicles and is a great stop gap to future technologies given the age of the HGV fleet. It is hoped that a switch to HVO will help GS transition to low carbon technologies in a systematic way, giving time to manage various operational constraints limiting early adoption of electric vehicles.





### Power Tools

GS are continuously trialing the use of electric power tools as alternative to 2 stroke machinery. They currently utilise several battery powered trimmers and blowers and continue to evaluate the effectiveness and development of the technology, and replacing older traditional machinery as it reaches end of life.





## Biodiversity & Heritage

We manage our parks and open spaces by ensuring that where possible we maintain a diverse range of age, species and structure in the canopy, understory and herb layers and aquatic spaces. This is achieved by:

- Managing site specific habitats such as acid grassland, mature veteran trees, rivers, ponds, and woodlands.
- Supporting the borough's wildlife through interventions such as birds and bat houses, stag beetle loggeries, aquatic ledges and educational signage.
- Enhancing existing aquatic and terrestrial habitats to support a diverse range of flora or fauna.
- Exploring opportunities to create new habitats such as wildflower meadows, native hedge planting, aquatic ledges, and copses.
- Consider introducing sympathetic mowing regimes where suitable, for example leaving areas of rough grassland around trees.
- Recognising the effects of climate change e.g., drought, wildfires, floods, disease, biosecurity.
- Prioritising sustainability through resilient planting e.g., drought tolerant trees and plants.
- In 2021 LBH commissioned a baseline report of Invasive species Parks and open spaces portfolio, surveying 195 sites. This information was used to procure a specialist contractor to remove targeted species over a five-year period beginning in April 2025 and running for 5 years. This will seek to eradicate: Japanese Knotweed, Giant Hogweed, and floating Pennywort, and provide advice on how to deal with Himalayan balsam.
- Biosecurity – Anyone responsible for plant supplies must ensure that all plants and associated soil are supplied free of pest and disease at all points in the supply chain. To achieve this, GS consider the latency period and life cycles of all pests and diseases. Special attention to biosecurity is given to imported stock.
- GS procurement will always prioritise suppliers that are able to demonstrate a supply chain audit trail (for example, are part of a recognised Plant Health Assurance scheme) that ensures plant material sourced within the UK is under a regime of biosecurity-aware production and follow nationally agreed good practice guidelines.

The Nature Recovery Action Plan (NRAP) is a part of Hounslow's Greener Borough Framework and was adopted in 2023. A stakeholder board -Nature Recovery Stakeholder Board (NRSB) was launched in February 2024 and is led by the Nature Recovery Manager with quarterly meetings held in various locations across the borough. Currently planning the 4th meeting to be held in February 2025.

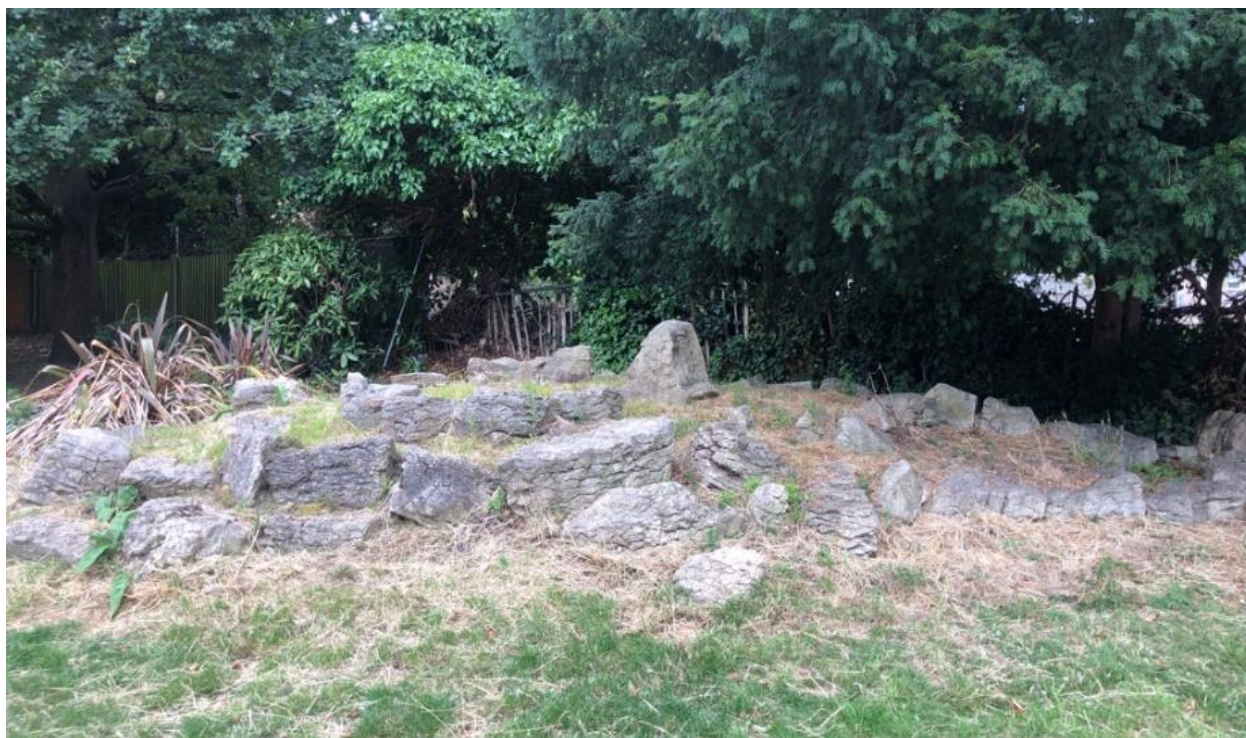


## Ecological Survey 2023

Lampton Park is located the middle of London Borough of Hounslow and is 15.73ha in size. The park comprised of mowed amenity grassland, wildflower meadows, shrubs, a memorial garden, and tree lines along the boundaries. Native trees both semi-mature and mature were recorded at the site include deodar, pines, field maple, sycamore, ash, and silver birch. Shrubs at the park are known to attract birds like blue tit, house martin, pigeon, ring necked parakeet, and kingfisher.

Amenity grassland is regularly mowed and wildflower meadows at the site records the presence of false oat grass, common knapweed, creeping thistle, and daisy.

For the enjoyment in the park, it has playing field, walking trails and line of trees to do bird watching. A small pond was seen at the site, and it is not currently managed properly.



### Considerations

- Provision of native fruiting and flowering plants
- Installation of a series of bat boxes -to provide roosting locations for bats and bird boxes -for nesting, foraging, and commuting, throughout the site. The site is assessed as providing high value for foraging and commuting and roosting bats, based on the linear features on the site. Also, that mature trees have gaps and crevices which provide potential habitats for roosting bats.
- Installation of hedgehog houses
- Installation of log piles, bug hotels and artificial hibernacula for amphibians, invertebrates, and reptiles.



## Community Involvement

This is crucial to the management of Lampton Park and will continue to be of the utmost importance.

### Friends Groups

The Council works closely with all relevant stakeholders and encourages them in their efforts to apply for grants and to organise volunteer days and events. We also engage with other community groups and third parties to encourage and ensure opportunities for the needs and requirements of a diverse borough population.

The Parks Team provide support for applications to the Council's Thriving Communities Fund. More information about the scheme can be found on the Council webpages [here](#).

Hounslow Friends of Parks Forum holds quarterly meetings. The forums are facilitated by [Habitats & Heritage](#) who are a west London based organisation who help support new and established Friends Groups. The Friends of Parks provides a support network, and to provide opportunities to build relationships that are based on collaboration.

Since 2024, Lampton Park has developed a Friends Group - 'Friends of Lampton Park' Their ambitions are to promote opportunities to integrate nature with community and encourage a sense of belonging and ownership with the green space. They have since embarked on a Nature Wellbeing walk 'Mindful Lampton' which took place in early 2025 and was a joint event with the Parks team and Habitats and Heritage. They are planning litter picks, night walks and COVID memorial commemoration with wildflower seed sowing in the spring. They are not currently constituted as they are focusing on community cohesion and encouraging awareness about Lampton Park, its benefits and identifying further friend members.



### Volunteering

The Council and GS work with the public to inform, educate, and volunteer in managing habitats through event opportunities and specific projects such as school planting in greenspaces, green gyms, tree planting and habitat surveying. Community involvement and engagement in nature conservation projects helps to increase the health and wellbeing of our residents.

The GS Countryside team have been undertaking a new 2-year initiative since spring 2024 called Volunteering in Parks (VIP), where they have expanded their volunteering sessions across 6 Hounslow's parks and open spaces which includes Lampton Park. The team organise, run, and promote opportunities, giving stakeholders the chance to volunteer in a local green space.



General Activities include, but not limited to;

- Litter picking
- Meadow creation and management
- Tree planting, maintenance, and aftercare
- Bulb planting
- Wildlife Surveying
- River clean ups (where relevant)
- Creating and restoring habitats

The Council also have an Environmental Champions Scheme, more information available on the website [here](#).

## Marketing

Promotion and marketing of Lampton Park is carried out by means of a range of measures to ensure that local people and visitors to the borough are aware of the facility.

## Entrance Signage

Noticeboards on site are used to promote work in the park and activities and events held by the Council.

## Signage Refresh

In 2021, the Parks Team secured significant funding for a borough-wide refresh of all parks and open spaces signage.

The signage was designed in partnership with Friends, local community groups and other stakeholders to ensure they were designed in consultation with our park's users. The design principles focused on inclusivity, using pictograms and maps to illustrate the facilities available in the park and the surrounding area. This programme was completed in Autumn 2024.



For more information and examples of the new signage please visit the Council webpages [here](#).

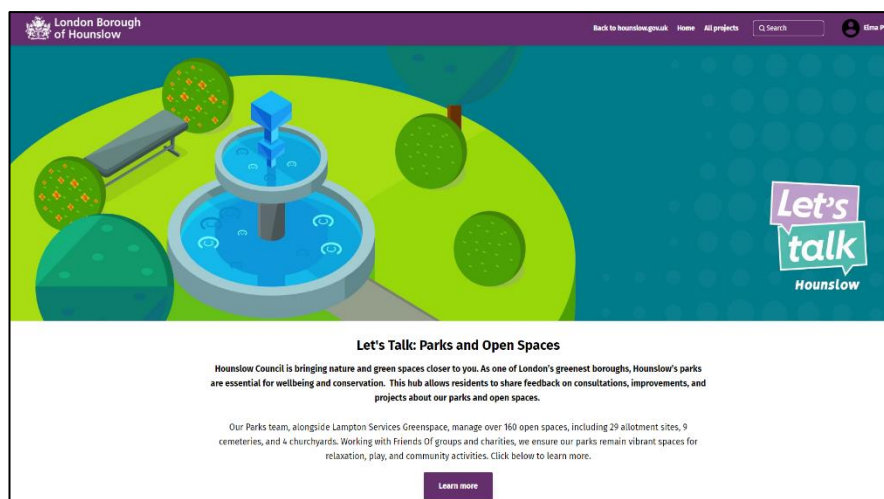


## Web & Press

The Council's website has a dedicated Parks and Open Spaces section which can be found [here](#). You can find general information about the service, with useful links, advice, and reporting channels for customers to use.

## Parks Hub

The Consultation and Engagement platform Let's Talk Hounslow has a new dedicated Parks Hub which includes current consultations, surveys, and live projects, as well as a digital noticeboard. Since the launch in February 2024, the site has had over 10,000 visitors to the homepage. To view the hub visit [here](#).



Hounslow also has several other websites which are designed to engage with the wider community about our services and the opportunities available in Hounslow. Please visit, [HounslowConnect](#) and [InHounslow](#) for more information.

- Promotion through the London National Park City [www.nationalparkcity.london](http://www.nationalparkcity.london)
- London National Park City Mini-Guide for Hounslow, celebrating Hounslow's great outdoors [Hounslow's Mini Guide](#)







The Council also has an active social media presence on [Facebook](#) and [X](#) with the handle @LBofHounslow.

To create community awareness for all its facilities the Council regularly produces articles and press releases about activities and facility development. The Council publishes a regular newsletter, Hounslow Matters, which is provided to all residents and includes news and information about our services, including parks and open spaces. To download the latest publication please follow the link [here](#).

## Events

The Council encourages the hire of parks to appropriate organisations for commercial and community events. Events are held in accordance with the Parks and Open Spaces Events Policy found on the council webpages [here](#). Lampton Park hosts a range of diverse events regularly.

### 2025 Upcoming Events:

The Events team are currently planning this year's events.

### 2024:

**'Lampton Lights'**- Saturday 26<sup>th</sup> October welcomed an evening full of fireworks and seasonal fun! Celebrating Diwali, Halloween, and Bonfire Night all in one. With some creepy stories, mandala painting, fun fair, council services and other exciting activities, there was something for everyone.





**‘Greener Living Festival’**- 7<sup>th</sup> September an array of immersive activities was set up to promote sustainable green activities for all ages. From upcycling to ways of recycling more efficiently, biodiversity to sustainability awareness.



A bug hotel was also created with local residents and the Countryside team, 'Bugingham Hotel'.



The Hounslow Mayor was also in attendance and got involved in creating her very own paper plant pot.

**Eid Prayers** - are arranged twice a year by a local Islamic Trust. The day consists of Eid Prayers followed by food and a large funfair. Families enjoy the park all day and the event now attract audiences from Ealing as well as Hounslow, bringing thousands of visitors to the park.

**Polish Heritage Day** - In the last 3 years we have held the Polish Heritage Day event in Lampton that was free, open to the public and is an aim to raise an awareness of traditional Polish culture as well as trying to help local Polish residents link with different services available in the borough. The organiser arranges for traditional Polish food stalls, traditional stage performances, a small funfair, and a variety of other activities for people to take part in. Great success and is set to continue annually.

**Barrio Fiesta** – An event celebrating Filipino culture and community through music, dance, food stalls and connecting Filipino people across the country. This event is attended by 10,000 people over the course of two days, with attendees visiting from all over the country.

**Funfair** - Regular funfairs throughout the year.







## 2022:

**‘Films on the Green’**- As part of the Summer of Culture programme of events we had through the summer '22, our parks were used as a free open cinema for the locals to enjoy. Tickets were free but had to be reserved through a booking system to ensure no overpopulation. Families and individuals were thrilled, some cosplayed as their favourite characters, some brought their own picnics. It was a fantastic experience, and we hope to continue this idea moving forward across more of our parks.



**‘Lampton Lights’** – First of a roaming event planned in the borough, the first fireworks display the Council had put on in the last 15 years. This event was a celebration that combined Halloween, Bonfire night and Diwali all in one. Great success with over 1200 residents turning up to celebrate and take part in both the free and paid activities. We had a mixture of council stallholders, NHS as well as third party partners which included the funfair, food vendors etc., free activities: arts and crafts such as pumpkin carving and mandala painting, and paid activities such as face painting and henna.







# How do we know we have arrived?

## Monitoring & Review

This management plan has been designed as a live document that will guide development in the park over the next five years. Progress will be subject to monitoring and review to measure success and delivery of aims.

Members of the Greenspace Parks team regularly visit the site to monitor progress against the action plan; the results of these visits are then discussed at monthly management and meetings with LBH officers and relevant stakeholders.

LBH Parks Officers work closely with GS and park users to monitor progress and discuss future. This includes:

- Performance against the requirements of the Management Plan
- Provision and analysis of infrastructure surveys
- Provision and analysis of asset surveys
- KPI's and performance monitoring

An annual SWOT analysis will be carried out by all stakeholders and, together with the information gathered from all the monitoring methods will be recorded and fed into annually updated management plans.

GFA Judges feedback and award outcome will enable continuous learning, development and improvement by all partners involved in the award process. Discussed at monthly Parks and GS management meetings and meetings with stakeholder.

## Action Planning

Our action plan for Lampton Park is provided in Appendix 1. This plan is based on an evaluation of the SWOT analysis together with other projects and plans raised by the Friends group. The action plan lists actions and categorises based on timescales and the Green Flag award criteria. The plan will also allocate ownership for each task to the key stakeholders.



# Appendix 1

## Lampton Park | Green Flag Award | Action Plan Updated 2025

### Key to Action Plan

#### Green Flag Award Criteria

W	Welcoming Place
H	Healthy, Safe and Secure
VM	Well Maintained and Clean
S	Sustainability
BH	Biodiversity and Heritage
C	Community
Mkt	Marketing
Mgt	Management

#### Stakeholders

LBH	Parks Service Management Team
GS	Lampton Greenspace


#### Delivery Timescales

S	Short term (less than 1 year)
M	Medium term (1 to 3 years)
L	Long term (3+ years)
O	Ongoing

MANAGEMENT ACTION	STAKE-HOLDER	GREEN FLAG CRITERIA	TIME-SCALE	STATUS 2025
Improvements to entrance design and surfaces	LBH	W, WM	L S/M	Part of Make your Mark project. New signage has been installed
Maintenance of the fully restored pond	LBH	W, H, WH	O	To be explored part Volunteering in Parks programme and Make your Mark
Improved planting schemes around the pond and existing borders within the park	LBH, GS	W, WM	O	Part of Make your Mark project and Volunteering in Parks programme
Review signage design and replacement program in line with new parks signage strategy to promote activity.	LBH	W, S	S/M	Signage completed in 2023
Anti-Social Behaviour – signage review, continue stakeholder engagement and targeted enforcement.	LBH, GS	W, H	O	liaise regularly with police on ASB. Development of project 'Make your Mark' looking at improving Lampton Park regarding Women and Girl's safety issues.
Review Dog Fouling signage	LBH, GS	H, WM	O	Signage completed in 2023
Reuse Green Waste	GS	H, S	S	Any woodchip generated on site is used on site
Continue to maintain a healthy tree stock with a review of opportunities for new tree planting.	LBH, GS	S, W, WM, BH	M	All tree works are carried out by GS in compliance with UK legislation. Additional tree planting has been done as part of the 22/23 programme.
Oak Procession Moth (OPM) – Continue inspection program for	GS	WM	O	This site has significant issues with OPM which is on a treatment plan.

MANAGEMENT ACTION	STAKE-HOLDER	GREEN FLAG CRITERIA	TIME-SCALE	STATUS 2025
OPM. Include action plan for the control and treatment of OPM.				
Expand orchard area	LBH, GS	BH, C	S/M	Completed, with further options to expand in future.
Develop plans for increasing habitats and the biodiversity of the site. Explore opportunities for enhanced hedge and meadow planting around the site to increase amenity value, biodiversity and reduce maintenance.	LBH, GS	BH	S	Any new planting will aim to provide increased ecological benefits and keep maintenance to a minimum Design has begun for cultural herb garden which will take over previous rose bed sites and be managed and maintained by community and through pop workshops.
Renovate the rockery area with sensitive planting	LBH, GS	W, BH	S/M	Planting in this area to be reviewed. Budget opportunities being sought for larger replanting options.
Add bird boxes & bat boxes, Bat Surveying, and other site appropriate habitats/surveys	LBH, GS	BH	M	Three bird boxes were installed in 2020 and further opportunities will be explored in the future as they arise.
Memorial Garden - Carry out a full renovation and replanting of this feature	GS	BH, WM	S/M	This area has already had a partial restoration. Further trees have been added to this area this planting season. Exploring seating in Make your Mark project.
Creation of a community sensory garden by the memorial garden	LBH	C	S/M	Community Garden developed near tennis courts in 2024.
Continue to work to establish a Friends of Lampton park group and with the wider community.	LBH	C	O	Friends of Lampton Park group established, actively involved in Community Garden, Volunteering in Parks and planning engagement activities.
Continue to provide support to other community volunteers and services to promote greening activities.	LBH	C	O	
LBH to continue to facilitate events within Hounslow's parks and open spaces as part of an active community engagement agenda.	LBH	C	O	Events have restarted throughout 2022 and continue to be supported by our events team.
Support Fitness activities in the park	LBH, GS		O	Positive use of the park for fitness activities with minimal impact on the green assets
Installation of a new Multi Use Games area	LBH	C	S/M	Funding now secured. Works required to remove mini golf area.
LBH to facilitate opportunities for Education, Culture and Heritage at the site	LBH, GS	C	S, M	Opportunities will be explored as they arise.
Restoration of the Sarsen stone heritage plaque	LBH	BH	M	Needs to be revisited.
Carry out an asset survey for the park buildings to explore options for repurposing	LBH	BH, Mkt	M	Feasibility study received for old toilet block,





MANAGEMENT ACTION	STAKE-HOLDER	GREEN FLAG CRITERIA	TIME-SCALE	STATUS 2025
Continue to publicise the park through LBH website, social media platforms and notice board. Also, borough wide campaigns, including achievements, initiatives, and announcements.	LBH	Mkt	O	Ongoing.
Support other positive promotion of the park through various media platforms.	LBH, GS	Mkt	O	Ongoing.
The management plan to be reviewed annually and the action plan to be updated annually.	LBH, GS	Mgt	O	Ongoing.
Development of a community garden which reflects the ethnicities surrounding the park	LBH	BH, C, W	L	Community Garden delivered in 2024, sessions to continue into 2025.
Improvements to Lampton Park – ‘Make your mark’ project, exploring ways to increase safety in parks for women and girls.	LBH	C, H	L	CIL bid awarded funding, awaiting for funding to be released. In design stage, engagements completed initially.
Lampton Seed Bank development	LBH	C, H, BH	L	In design stage and being explored in Lampton Park Community Garden.

# Appendix 2

## Annual Maintenance Work Schedules

The following table provides an overview of the annual maintenance work schedules. All frequencies are subject to seasonal variations, resource, and specific horticultural requirements. They are reviewed annually by the Operations Manager at GS to ensure they remain suitable and reflect any significant site changes. See “Meeting the Green Flag Criteria” section for more detailed management information.

<b>Service</b>	<b>Frequency/Management information</b>
<b>GM Summer works (March - October)</b> <i>Amenity grassland cutting</i> <i>Rough grassland cutting</i> <i>Wildflower meadow cutting</i> <i>Hedge &amp; shrub cutting</i>	<b>Managed by the Grounds Maintenance Teams</b> Once every 3 weeks 1-2 cuts per summer season 1-2 cuts per summer season 1 “reduce cut” dependent on horticultural requirements
<b>GM Winter works (October – March)</b> <i>Hedge &amp; shrub cutting</i> <i>Pond clearance</i> <i>Leaf clearance</i>	<b>Managed by the Grounds Maintenance Teams</b> 1 “hard cut” dependent on horticultural requirements As required, dependent upon size and conditions As required, from hard surfaces and grass areas
<b>Cleansing</b> <i>Litter collection &amp; bin emptying</i> <i>Non-offensive graffiti removal</i> <i>Offensive graffiti removal</i> <i>Fly tip removal</i>	<b>Managed by the Cleansing Teams</b> <b>[site specific]</b> Daily, including bank holidays. Within 7 days of notification Within 24 hours of notification Within 48 hours of notification
<b>Playgrounds</b> <i>Safety inspections</i>	<b>Managed by the Playground Inspectors</b> 1 visual inspection per week minimum (based upon site usage), quarterly “operational” inspections, recorded, annual independent inspections by the Royal Soc. for the Protection of Accidents (ROSPA), recorded.
<b>Infrastructure</b> <i>Cleansing (bins, benches, signs etc).</i> <i>Lighting</i> <i>Buildings</i>	<b>Various teams/management</b> As required, based on visual inspections and reports Inspections and repairs managed by Hounslow Highways All H&S checks conducted, electrical, fire, water, etc.
<b>Trees</b> <i>Tree inspections</i> <i>Tree maintenance</i> <i>Tree watering</i> <i>Tree planting</i>	<b>Managed by the Tree Team</b> Annually Based on previous inspections, prioritised by H&S Summer: May – September (for trees under 3 years) Winter: October – March
<b>Site Specific Features &amp; Services</b> <i>Site Attendant</i>	Daily general cleansing and horticultural tasks and to report issues when found.



## Monitoring the Annual Maintenance Work Schedules

Members of the Parks Team conduct site visits to ensure that the work schedules are being adhered to and report issues to GS to resolve where necessary. Customer enquiries relating to maintenance issues are also routinely assessed to ensure they are rectified in a suitable and timely manner.

The Parks Team are currently working with the Ward Improvement Team to develop a new monitoring program, which we expect to be deployed in spring 2025.

The program will rely upon the Land Audit Management System (LAMS), developed by the Association of Public Service Excellence (APSE). This is an industry recognised approach, which many local authorities use to monitor the performance of their park services.

The program will also make use of and refer closely to the guidance provided by Parks for London in their recently updated Green Space Quality Manual. This provides valuable insight and understanding as to “what good looks like” and will help to ensure a consistent approach is taken during routine monitoring.

The new monitoring program will be periodically reviewed to help measure its success in improving the parks services. We expect it to help identify where there are issues and trends in performance to inform how best to deploy resource in the areas which require it the most.

For more information regarding the tools and approach that will be used for the monitoring program, please visit the [APSE LAMS](#) page and download the Parks for London [Green Space Quality Manual](#).





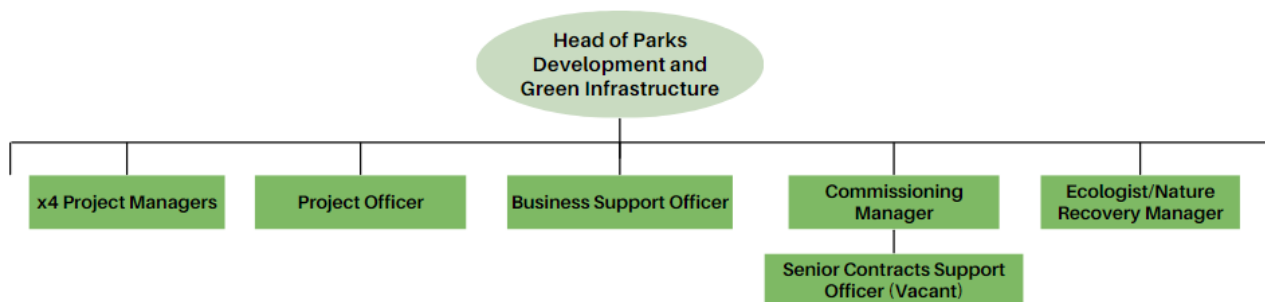
# Appendix 3

## Management Structure & Responsibilities

Lampton Park is owned and managed by the LBH and maintained by GS. Information below sets out the management structure and describes the roles and responsibilities of the key personnel involved in managing and maintaining the site.

## LBH Parks Service Management Structure

The Environment and Culture Directorate provide the following roles who are responsible for the management, and associated roles, of Hounslow's parks and open spaces:



### LBH Head of Parks Development & Green Infrastructure

Senior commissioning role for the management and partnership with GS, senior advisor in relation to parks and open spaces, strategy and policy development, Member's liaison.

### LBH Parks Project Managers (x4)

Project development and management, fundraising, community engagement and consultation, implementation, strategy, and policy setting.

### Parks Project Officer

Development and delivery of projects, fundraising, community engagement and support Head of Parks.

### Commissioning Manager

Supplier performance governance and relationship management, Legal and contracts, Planning/Commissioning, Operational Service delivery and business processes/systems.

### Senior Contracts Support Officer

Supplier performance, customer service and casework, community engagement and consultation, project support.

### Parks Business Support Officer

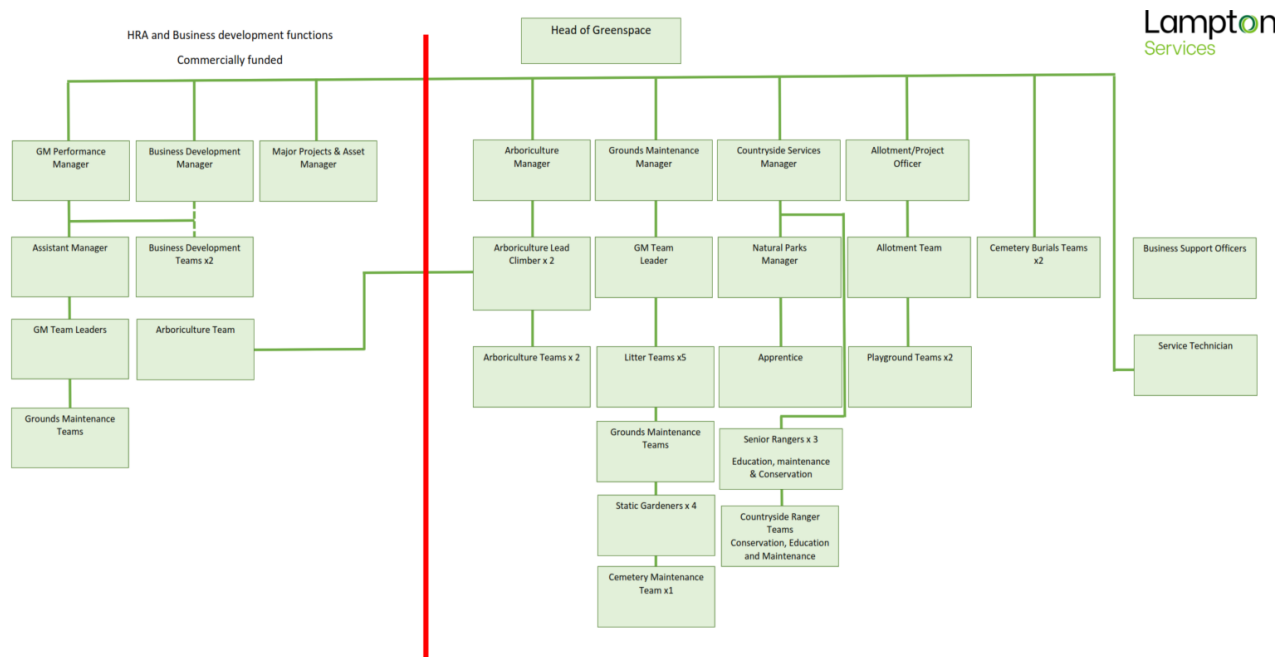
Assistance with finance; administration, project support and communications.

### Ecologist & Nature Recovery Manager

Responsible for providing expert ecological advice relating to the management, protection and enhancement of important habitats and species within the borough.

## Lampton Services Greenspace Management Structure

The following GS roles are responsible for the management of Hounslow's parks and open spaces.



### Head of Service

Responsible for the ground's maintenance service provision. Oversees the delivery of the specification which includes infrastructure.

### Projects Manager including the Allotment Service

Responsible for the development of park infrastructure, management of the allotment service, overseeing horticultural standards, schemes, and developments. Main contact for contractors (CDM). Friends and Member liaison.

### Countryside Manager

Responsible for the management of the borough's countryside service. This role includes the management of the Ranger team and educational, animal husbandry, environmental and wildlife operations/programs associated with these locations.

### Planned Maintenance Manager

Responsible for the management of the operational resources to deliver the ground maintenance services for the parks and open spaces sites.

### Performance and Support Officer

Customer Service functions- Freedom of Information (FOI), customer enquiries, councillors' enquiries, and monthly statistics; technical project support.

### Tree Team Manager

Responsible for the teams that carry out the inspections and maintenance of the boroughs 85,000 park trees. Oversees all tree planting schemes for the council and community groups in parks. Managing and mapping/recording of invasive species. Planning application guidance to LBH.



#### Playground Inspectors x2

Visual, operational, and minor repairs of playgrounds. Inspected annually external contractor.

#### Operational Teams

Grounds maintenance is delivered using mobile teams. These teams provide the Grass cutting, horticultural tasks, general maintenance, litter bin emptying and litter picking.

#### Business Support Officer

Provides administration for fleet, handles finances and overtime schedules.





**London Borough of Hounslow**  
Hounslow House, 7 Bath Road  
Hounslow TW3 3EB  
[www.hounslow.gov.uk](http://www.hounslow.gov.uk)

---

**Tel: 0208 583 5555**

---



**London Borough  
of Hounslow**

**Lampton**  
Services  
Greenspace