

**GREEN FLAG MANAGEMENT PLAN 2020-25**

---

# Boston Manor Park

# 2020-25



**London Borough  
of Hounslow**



**Lampton**  
Services  
Greenspace

*Updated 2025*



# Foreword

The London Borough of Hounslow has some superb greenspaces that everyone can be proud of. They are places where people can relax, enjoy nature, play, or take part in cultural and historic activities and recreation. They are essential for the health and well-being of our residents, and they are vibrant spaces that provide a borough-wide green infrastructure for our communities.

In Hounslow, we are committed to stimulating a strong and robust green recovery related to our Greener Borough Framework and Climate Emergency. The Council's Green and Blue Infrastructure Strategy plays a major role in delivering the Greener Borough Framework and sets out key priorities for our greenspaces in areas such as health and wellbeing, regeneration, climate change and nature recovery.

The London Borough of Hounslow considers the Green Flag Award process as a tool towards positively developing our greenspaces within this strategic framework and in partnership with our communities. It contributes to providing a vision, with clear objectives and priorities for how the Council and its partners would like to see greenspaces managed in future years.

This plan is not only the commitment from the Council to improve our greenspaces but is an important recognition of the support and commitment of the friends of parks, community groups, local clubs, third sector and partners who share our visions and work with us to respond to our green agenda.

# Acknowledgements

This plan has been produced by Greenspace\* (GS) and the London Borough of Hounslow (LBH) Parks Team. In addition, it is important to acknowledge the great contribution from all interested groups for their commitment and dedication in supporting the development, promotion, and management of Boston Manor Park.

\*Greenspace is part of the Lampton Limited Group and is a company wholly owned by London Borough of Hounslow with an aim of returning value to the Council representing a bold new ambitious approach.





# Contents

<i>Foreword</i> .....	1
<i>Acknowledgements</i> .....	1
<i>Purpose of the Plan</i> .....	3
<i>Where are we now?</i> .....	5
<i>Site Description and facilities</i> .....	5
<i>Detailed History</i> .....	7
<i>Recent Developments</i> .....	10
<i>Where do we want to go?</i> .....	12
<i>Green Flag Analysis</i> .....	14
<i>SWOT Analysis</i> .....	15
<i>How do we get there?</i> .....	16
<i>Vision and Objectives</i> .....	16
<i>Meeting the Green Flag Award Criteria</i> .....	17
<i>A Welcoming Place</i> .....	18
<i>Healthy, Safe and Secure</i> .....	18
<i>Well Maintained and Clean</i> .....	20
<i>Biodiversity and Heritage</i> .....	27
<i>Community Involvement</i> .....	29
<i>Marketing</i> .....	30
<i>How do we know we have arrived?</i> .....	33
<i>Appendix 1- Action Plan</i> .....	34
<i>Appendix 2- GS Works Programme</i> .....	41
<i>Appendix 3- Management Structure &amp; Responsibilities</i> .....	43
<i>Appendix 4- Events Overview</i> .....	46
<i>Appendix 5- Excerpt from Boston Manor Park 10 year MMP</i> .....	62







# Purpose of the Plan

The Management Plan for Boston Manor Park has been prepared by LBH and Lampton Services Greenspace. The plan is specifically developed for the individual site with a dedicated Green Flag Action Plan.

This plan has been developed following detailed assessment of the Green Flag Award criteria and a comprehensive collaborative review of the existing uses, management, and maintenance of Boston Manor Park.

As part of the development of the plan, detailed consultation has taken place with the Lampton Services Greenspace parks maintenance and management team, LBH officers and Friends groups.

The Management plan is a 'working document' that brings together all the information relating to Boston Manor Park and will be updated, revised, and annually reviewed. This plan has been developed based on the Commission for Architecture and the Built Environment (CABE) Space document *"A Guide to Producing Park and Greenspace Management Plans"* and the *"Green Flag Award Guidance Manual"* guidelines.

## Policy & Strategic Context

Actions and aims within this management plan are both guided by, and relate back, to wider Council strategies. The development of parks and open spaces are a vital component of the Council's Corporate Plan 2022 – 2026. Our work during this period is focused on six priority ambitions for a borough that is greener, healthier, cleaner, thriving, safer, and livable. Green infrastructure contributes in many ways to helping us achieve these priorities.

A key approach of Hounslow Council is working under the concept of "One Hounslow" where services are delivered without silos, working for specific outcomes with several internal council departments, community groups, NGOs, and government bodies.

Parks and open spaces play an important role in the approach highlighted in the Council's Joint Health and Wellbeing Strategy with start, live and age well, preventing ill-health, which in turn has an impact on reducing costs within the wider economy, the Council, and the NHS.

The Council's Equalities and Diversity Strategy 2023, created to improve equality, diversity, and inclusion - sets out an ambitious approach to target policies and funding to the areas which need them most to thrive. The strategy is based on three pillars - Equality by Place, Equality by Group, and Equality as Employer. Hounslow Council has committed to transform the opportunities and life-chances of communities in the borough's 30 most disadvantaged neighbourhoods.

The Council approved the Greener Borough Framework 2020-30 which seeks to provide a high-level framework to deliver on the Council's ambition and aspirations for the borough through enhancing our environment and reducing our use of resources. The framework is part of a wider ambitious green agenda bringing different people and organisations together to discover, engage, innovate, and deliver.





The framework is part of a wider ambitious green agenda bringing different people and organisations together to discover, engage, innovate, and deliver. The adoption of the Green and Blue Infrastructure Strategy and Nature Recovery Plan are the pillar of the strategic framework for the development of our parks and open spaces and their management plans through the Green Flag Award process.

#### Useful Links:

- [Corporate Plan 2022-26](#)
- [Climate Emergency](#)
- [Green Infrastructure Strategy](#)
- [Greener Borough Framework](#)
- [Nature Recovery Action Plan](#)
- [Equalities and Diversity Strategy](#)

## Parks Funding

The Council's Parks service is funded by an annual salary and contract revenue budget for base line ground maintenance activities, and provided by our service providers, Lampton Services Greenspace, to maintain all of Hounslow's parks and open spaces, including allotments, cemeteries, trees, countryside and other workstreams.

Current capital funding has been allocated through a park's improvement project, and sites which require improvement will be prioritised. This funding will cover 2 years of project delivery and staff resourcing 2023 – 2025. Other capital funding is obtained via Community Infrastructure Levy (CIL); S106, the Council's Thriving Communities fund (local CIL) and other grants and initiatives. These are applied for annually or as necessary and are based on need and strategic investment required by both the Council and local communities.

In 2019, LBH secured National Lottery funding of £3,634,600 to fund a major improvement scheme of the park entitled 'Reconnecting Boston Manor Park'.



# Where are we now?

## Site Description & Facilities

Through the Reconnecting Boston Manor Park project, funded by the National Lottery Heritage Fund (NLHF), the park has undergone a major program of capital landscape improvements alongside delivery of an extensive activity program that connects, educates, and engages visitors. The overall vision was to transform BMP into a vibrant asset that reflects the needs of the community and reconnects the park and community to nature, heritage and to its locality. The capital works were completed spring 2023 and included site-wide installation of new accessible paths and upgrading existing paths and trails, lake de-silting and restoration, renovation of the Walled Garden, Service Yard, changing rooms, new planting, construction of basketball courts and a new park hub building with space for community activities and cafe.





### Site Information

**Name:** Boston Manor Park

**Address:** Boston Manor Road, Brentford, Hounslow, TW8 9JX

**Contacts:** 020 8583 5555

**Email:** [parks@hounslow.gov.uk](mailto:parks@hounslow.gov.uk)

**Web:** [www.hounslow.gov.uk](http://www.hounslow.gov.uk)

**Designation:** Open Space

**Ownership:** London Borough of Hounslow

**Size:** 5ha

**Byelaws:** A copy can be downloaded at [www.hounslow.gov.uk](http://www.hounslow.gov.uk)

**Access:** open access at all times

**Transport:** **Train:** Brentford Station

**Tube:** Boston Manor

**Buses:** 195/E8/H91

**Parking:** Pay by Phone parking free after 4:30pm, weekends.

Bike racks also provided.

**Local Facilities:** Historic House, Playground and fitness area, Tennis Courts, Café, Education room, Walled Garden, Lake, Football Pitches, Nature Areas, Community Orchard, and River views with access to the Grand Union Canal.



## Detailed History

It is thought that Boston Manor House (earlier called Bordeston, Borstone and then Burston) was set up by Gervais de Blois, an illegitimate son of King Stephen; it was later granted to Ralf de Brito who built a church and churchyard adjoining his house in 1163, possibly the site of St Lawrence's church. In the late C12th the Manor was granted to the nuns of St Helen Bishopsgate and was most likely used to for growing food and as a retreat. From 1306 the nuns ran a weekly market, and an annual 6-day fair took place from the eve of St Lawrence's Day. In 1538 at the Dissolution of the Monasteries it was taken over by the Crown, and in 1547 Edward VI gave this and other properties, including Syon House, to the Duke of Somerset, the Lord Protector. Boston Manor House was later taken back in 1552 and in 1572 Queen Elizabeth, I gave it to Robert Dudley, Earl of Leicester who sold it to Sir Thomas Gresham, owner of Osterley Park.



*The two black and white images above are taken of the park around 1955. The colour photo of the lake before restoration.*

The house that survives today is the brick manor house built in 1623 by Lady Mary Reade who had inherited the property for her lifetime. She was the widow of Sir Thomas Gresham's stepson, Sir William Reade, knighted by James I. Sir William had died in 1621, and in 1623 Lady Mary married Sir Edward Spencer of Althorp and may have built the house quickly in time for their wedding. In 1642, during the Civil War, the Battle of Brentford was fought nearby, and it is rumoured that Charles, I watched it from Boston House. A fire in the 1650s destroyed the manor records and part of the house. After Lady Mary's death in 1658, the property was inherited by her relation, John Goldsmith, on whose death in 1670 the estate of some 230 acres was sold for £5,135 17s 4d to James Clitherow, an East India merchant, who extended the house to the north. It was from his descendants that it was bought by the Brentford UDC in 1924.

In 1718 the estate is described as comprising: 'The manor or capital house (called Boston) with gardens, walls, walks, courts, 5 fishponds, Plantation and nursery computed to be 3 acres . . . Whole being well wooded and watered.' A portrait of James Clitherow III (1731-1805) and his wife by Arthur Devis in 1759 shows them in the grounds of the house with the river Brent in the background, and the cedar trees were probably planted around this time. In the late C18th, land was sold for the construction of the Grand Junction Canal and the section from the Thames to Uxbridge was opened in 1794, with what was then the second lock from the Thames called Clitherow Lock. In the 19th century, James Clitherow IV and his wife Jane lived at Boston House, among whose friends were William IV and his Queen, who dined at Boston House in 1834.





*Boston Manor House,  
from an engraving of  
1799.*

The original medieval manor of Boston was part of the township of New Brentford in the parish of Hanwell and in the Domesday, Survey of 1086 was owned by the Abbott of Westminster.

About 1300 it was granted to the Nuns of St Helen's in Bishopsgate by King Edward I and they had possession until the Dissolution of the Monasteries and from 1538 it was held by the Crown.

Queen Elizabeth, I gave it to Robert Dudley Earl of Leicester, but he sold it to Sir Thomas Gresham who owned the Osterley on the west bank of the river Brent. As one of his possessions it was inherited by his stepson, Sir William Reade and it was his widow who built the first part of the existing house in 1623. This was square and three stories high with many fashionable features.

Lady Mary Reade's initials with the date 1623 are on the first-floor drawing room plaster ceiling. Lady Mary remarried, and she and Sir Edward Spencer lived at Boston House through the English Civil War. After their deaths Boston House and the estate was bought in 1670 by James Clitherow a City Merchant who extended the house another third and it was passed down from father to son through five generations until 1847. It was then inherited by cousins until it was sold to the Local Authority in 1924.

Although Brentford had become built up as an industrial and disrepute area by the second half of the 19th century, Boston Manor House and grounds remained rural. A description in 1866 in 'The Garden' referred to the charm of the woodland walk, a vista cut through one of the trees creating a view of the park from the house, rose walks and the fine kitchen garden.

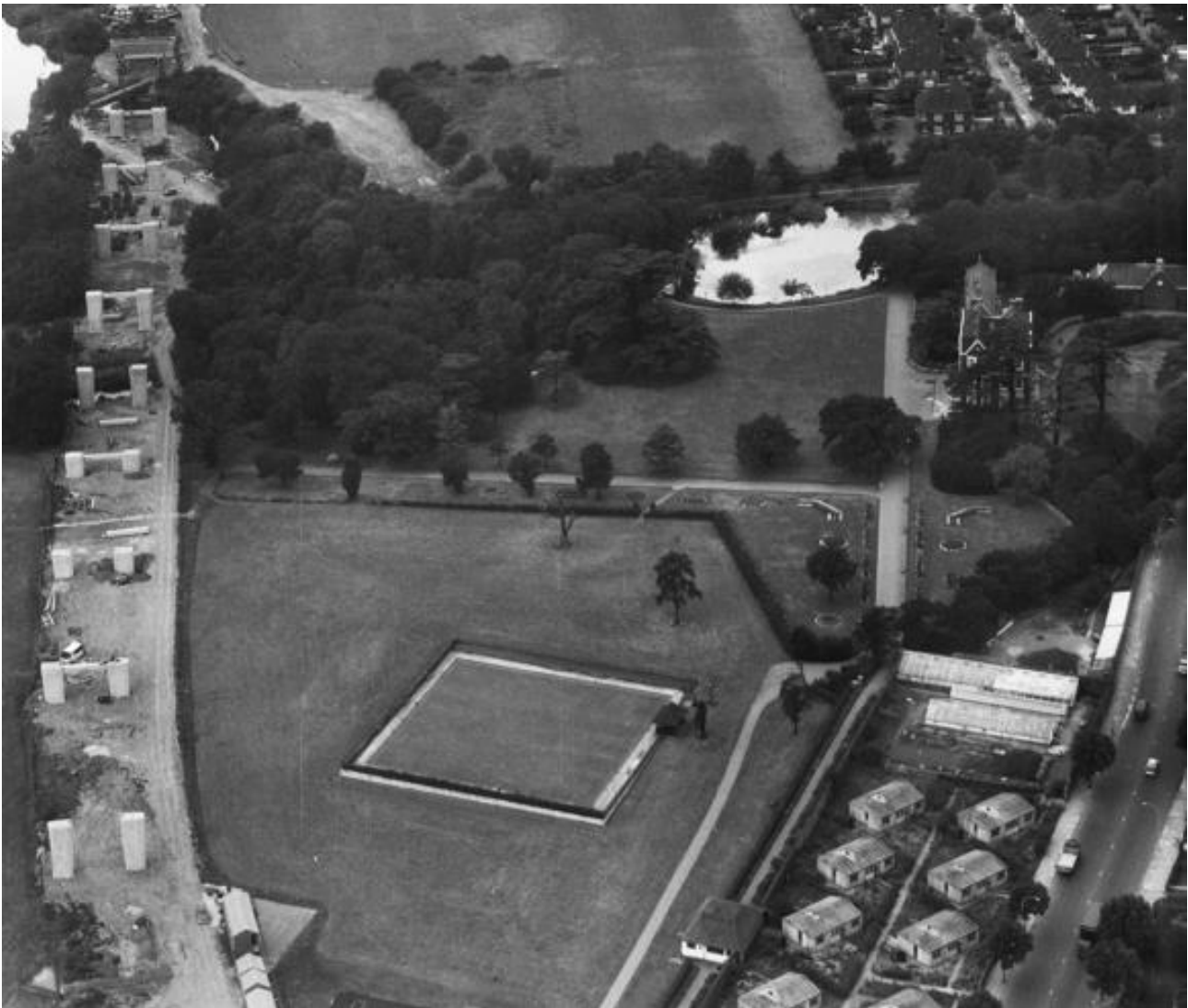
In 1918, the estate having become increasingly costly to maintain, it was decided to sell it. The sale catalogue described the walled garden, glasshouses growing melons and cucumbers, a temperate house and vinery and a 200-yard-long herbaceous border.

Not reaching the reserve price the house contents were sold by auction but in 1923, to avoid the threat of the house being demolished and the park developed for housing, Colonel Stracey Clitherow sold Boston House and 50 acres of land to Brentford Urban District Council. Some land was sold or used for housing development, meadows were made into playing fields and Brentford UDC paid £23,000 for the House and 2 acres of land.



The park was opened to the public on 11 September 1924. The ground floor of the house was used as a school from 1940, moving out in 1961. By this time the house, which had been damaged during WWII, was in a bad state but grants enabled its restoration. These were completed and it was re-opened by The Queen Mother in 1963. At that time, it was leased by the National Institute of Houseworkers as its headquarters and training centre, with the library and State Rooms open to the public on Saturdays in the summer. Part of the house was later leased to the Over Forties Association for Women who converted it into flats for their members, apart from the State Rooms, and in the 1990s also converted the stable block into self-contained flats.

The major event to affect this landscape has been the construction of the M4 motorway, which cut right across it from north-west to south-east in 1964/5.



*Detail of a 1963 aerial photo of the park showing post-war 'prefab' houses and surviving greenhouses in the walled garden. Residents remember the glass houses full of fuchsias every summer in the 1970s and 80s.*



## Recent Developments



### Achievements 2024/25

- Information on Boston Manor Park events, volunteering and the new and current audio and activity trails are all available on the [Park's Hub page](#).
- [Volunteer and visitor surveys](#) are live, with the data being collated for the project's final evaluation report.
- New signage installed: Welcome signs at all entrances, waymarking, tactile tree trail, wildlife, habitat, and heritage interpretation boards
- Playground repairs and installation of new play pieces (including sensory toddler area) completed in April
- See the 'Events Overview' Appendix 4 for more information of our activities and events
- Over 1600 people on mailing list for events
- Over 3000 (3180) hours of volunteering in the park this year – including gardening (plus veg growing) and conservation sessions. Participants include local residents, corporate groups, SEND groups, schools etc. along with the youth volunteering programme, youth work experience placements for excluded pupils, and pupils with learning difficulties. Since project start the number of volunteering hours equates to over £100,000 of skilled and unskilled work
- Jan-Nov 2024: 373 events delivered, which engaged 5968 people (3142 adults and 2826 children)
- A further 2500 wildflower plug plants (20 different species) and over 2500 native woodland bulbs planted in the meadow and woodland, new planting border completes the Walled Garden planting – with part funding from the Junction 2 festival Environmental Improvement Fund. And corporate donations.
- New partnerships and activities created with Ealing Hedgehog Friends, Ealing Wildlife Group, Swan Support, Wild Chiswick, Dog Walkers Community and Wildheart Foundation (community education and food growing project). See the Overview reports for more info and photos
- The Education officer continues to be exceptionally creative in curating diverse activities that are suitable for many different ages, interests and cultures e.g. updating toddler woodland adventures for each group, Fitness 4 older people, basketball, Trinjan Indian dancing, Feral Voices workshop, Forest bathing, new keep fit sessions and providers (Iyengar and laughter yoga, pilates & boot camp), family fun run and guided adult runs, silent disco litter pick events, Christmas event with choir and raffle. She also incorporates the community-made artwork in the park (secret bird mosaic trail in the woodland, Brentford FC bee in the walled garden, Fabric of Hounslow tapestry in the Hub activities room) as well as the new interpretation signage into the park workshops
- Staff underwent training and paperwork to make the Hub a Dementia Friendly venue
- Park manager oversaw Junction 2 remediation and environmental improvements works – including new cut and clear regime for wetlands area, new planting to improve flora biodiversity and riverbank stabilisation work.
- EA funded further feasibility study and preliminary design work for installing a fish and eel pass to facilitate upstream passage for these animals between the Brent River meander and the Grand Union Canal.
- Our second Nature Festival was a great success. See Overview report for more info and photos.
- Repair works to the heritage walls and the coping & flashing on the historic buildings in the service yard.

### Achievements 2023/24

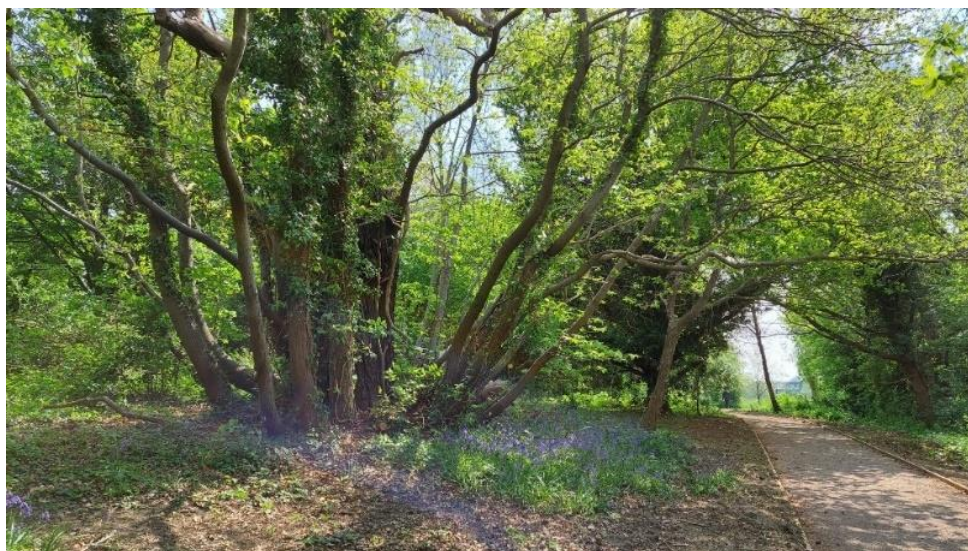
- Two 3x3 basketball courts installed.
- Space M4 (area for the Arts and Crafts Market) completed.







- Boardwalk and woodland trail rails installed.
- Lake viewing platform installed.
- Construction works completed spring 2023.
- 2 pilot Boston Manor Arts Market (BAM) markets, featuring local artists and crafts in Sept and Nov 23, with next pilot due April 2024
- Regular events and activities (using a range of themes/methods: creative, educational, nature-based, heritage, well-being, biodiversity etc.) in the park. Our activities include many family and child focused events during school holidays and weekends, two school workshop programmes for mainstream and SEND children from 3yrs up through to GCSE and A level, and work experience opportunities tailored to meet the needs of vulnerable young people (for example children excluded from mainstream education and SEND/ neuro-divergent youth aged 16-25yrs). 232 events delivered in 2023, engaging over 4000 adults and over 4100 children
- Regular gardening (including food-growing) and conservation volunteering programme, includes residents, diverse community groups, corporate groups, evening and weekend sessions, and sessions tailored specifically for SEND groups and youth volunteering programme e.g., for DoE awards Over 2700 volunteer hours in 2023.
- Over 1100 people on mailing list for BMP events and activities newsletter
- Web page and Blog for project and activities and events: [www.hounslow.gov.uk/BostonManorPark](http://www.hounslow.gov.uk/BostonManorPark)
- Facebook page [@BMPoutdoorevents](https://www.facebook.com/BMPoutdoorevents) to promote activities and events.
- June 23: Nature Festival, celebrating the completion of works, with over 1,500 attendees.
- June 23: Potting Shed café opens.
- July 23: return of Junction 2 music festival.
- Sept 23: canal bridge re-opens after extensive repairs (having been closed for 2 yrs.)
- Interpretation and welcome signage packages procured. Temporary Welcome signage installed.
- [Orienteering courses](#) created in partnership with South London Orienteers
- Activity trails (Nature & well-being, get to know your park) created and available as leaflets at the Hub and Potting Shed café and to download online.
- Playground repairs and upgrades out for tender Dec 2023 and due for installation/completion spring 2024.
- Over 7000 bulbs planted, tulips for the formal beds, daffodils, bluebells, snowdrops, and winter aconite in the woodlands.



*Native bluebells established in the woodland. We have increased biodiversity by adding more bluebells, as well as daffodils, snowdrops, and winter aconite throughout the woodland areas.*







*Formal opening of the park Hub building at the June 2023 Nature Festival, with park staff, Head of Parks, lead Cllrs, NHLF and Friends of Boston Manor Park.*

### **Friends of Boston Manor 2023-25**

- Maintain a website.
- Maintenance of the tennis courts. In summer 2023 the courts were resurfaced and painted, funded by FoBM.
- Support the running of the Tennis Club
- Stakeholder group for the park, attending Junction 2, Tennis Club and Friends Forum meetings.

### **Achievements 2022/23**

- Major works for soft and hard landscaping underway
- New path network improvements and additions enabling access through areas that were previously inaccessible, including paths through wetlands and woodland trail.
- Service Yard (including tool storage and volunteers mess rooms), Bothy and Changing room buildings refurbished.
- Walled Garden restoration completed.
- Demolition of old café and construction of new Park Hub building, including café, staff office and activities/education room
- Lake desilted and restored with new revetments, re-profiled islands and viewing platform.
- New wetlands area created, with wetland seasonal scrapes, sculptures, and community orchard.
- New lighting and water supply points around the park
- New bins and benches installed.
- Appointment of Natural Park Manager October 2021 – working with and liaison with project team and contractors on site. Starting delivery of Activity program, putting on public engagement events, activities, and horticulture/conservation volunteering
- Environment Agency Water Environment Investment Fund awarded in 2022/3 to undertake a Fish Pass Feasibility Study to create design options for fish to pass over the weir between GUC and the River Brent meander.
- Appointment of Learning and Volunteer Coordinator in September 2022 to deliver engagement events and activity programme alongside Natural Park Manager
- Regular events and activities (range of themes/methods: creative, educational, nature-based, heritage, well-being, biodiversity etc.) in the park, including for families in school holidays and regular gardening and conservation volunteering programme. 1272.5 volunteer hours contributed in 2022. 193 events delivered from appointment of NPM until end of 2022, engaging 1432 adults and 903 children.
- Approx 600 people on the mailing list for BMP events and activities newsletter

## 2020/21 Achievements

- Water Environment Investment Fund awarded in 2020/21
- GLA Greener City Funded and Environment Agency River restoration Project launched by Thames 21. Works undertaken included installation of large flow deflectors, floating reed bed and bankside aquatic marginal planting.
- Start of NLHF project
- Capital works tender package prepared and contractors for landscape and building works appointed.
- Implementation of Tree Works Programme - main tree belts undergo dead, dying and dangerous tree removal, removal of scrub, opening up views around Veteran trees and thinning out of dominant tree species.
- Increase in Community Safety by opening up densely wooded areas and the boundary of the River Brent and Grand Union Canal
- Re-creation of lost and historic views

## Previous Achievements

- December 2019 LBH secured National Lottery funding of £3,634,600 to fund a major improvement scheme of the park entitled 'Reconnecting Boston Manor Park' for a major program of capital landscape improvements, alongside delivery of an extensive activity program that interprets, connects, and engages diverse communities.
- Construction works on site began in 2021, completed spring 2023. Activity programme ongoing.
- Boston Manor House has already achieved a grant of just under £4million for the restoration of the Grade 1 Jacobean Mansion within the park. Works started in early 2019, completed 2023.
- Good Growth Funding Achieved for an Arts Market under the M4 flyover.

## Friends of Boston Manor Achievements 2019-20

- Running the community Café, at weekends and during school holidays
- Running bookings for children events/parties in the Walled Garden and pavilion
- Maintenance of the café, tennis courts, dog bins and benches
- Grounds maintenance with community payback and volunteers.
- Supporting the (NLHF) Lottery application process
- Play area improvements completed in partnership with LBH and GS
- Maintain a website.



*The Walled Garden is planted with many sensory and other plants for pollinators, which can be used to compliment a diverse range of workshops and activities delivered by staff in the park.*



# Where do we want to go?

## Green Flag Analysis

The ambition for LBH in partnership with GS and community groups is to continue to work to improve standards and develop parks and opens spaces strategically according to corporate priorities and local needs.

A clear connection between the criteria identified by the Green Flag Award Scheme and the main points gained from the SWOT analysis and site review completed with the Stakeholders of Boston Manor Park has helped to establish a comprehensive management plan for this site.

The management plan process is described below the section “How do we get there?.”

## Consultation & Co-design

The Council has a strong partnership with the Stakeholders of Boston Manor Park. Co-designing the future of the park together in most initiatives and opportunities.

Continuous dialogue is in place through regular communication and a quarterly forum where Friends discuss wider issues and learn from each other to improve overall management standards.

LBH works in close partnership with GS with monthly project and development team meetings where the monitoring and progress of these plans are discussed.

LBH engage annually with Friends groups and community groups in compiling these management plan and their progress.

Ward Councillors and the Lead Cabinet Member for Recreation, Public Spaces and Parking are regularly updated on parks development projects and strategies.

Liaison with the Hounslow Met Police and the Councils Enforcement Team on matters around ASB and public safety.







## SWOT Analysis

A SWOT analysis is a management critique to identify Strengths, Weaknesses, Opportunities and Threats to help shape future improvements.

<b>STRENGTHS</b> <ul style="list-style-type: none"><li>• Historic House &amp; grounds, features, and landscape, including veteran tree stock.</li><li>• On site staff: full time Natural Park Manager, part time Learning and Volunteer coordinator.</li><li>• Playground and fitness area, tennis courts, 3x3 basketball courts and Sports pitches</li><li>• New Park Hub building with café, activities classroom and toilets, restored Service Yard, and Changing Room buildings.</li><li>• Restored Lake, river, canal woodland and nature areas, variety of interpretation and access signage with accessible paths and trails.</li><li>• Program of regular diverse engagement events and volunteering opportunities for local and wider community including some that bring in external funding</li><li>• Revived community engagement that substitutes gardening/maintenance activity previously done by Friends</li></ul>	<b>WEAKNESSES</b> <ul style="list-style-type: none"><li>• Impact on biodiversity, hard and soft and landscaping from events</li><li>• Friends group maintaining activity/presence.</li><li>• Securing funding to sustaining the high quality of horticulture, volunteering, and events after the end of the NHLF funding period (Sept 2025)</li></ul>
<b>OPPORTUNITIES</b> <ul style="list-style-type: none"><li>• Park stakeholder steering group</li><li>• Development of funding bids to retain/develop posts beyond Sept 2025, end of NHLF project</li><li>• Continue to improve biodiversity and planting.</li><li>• Continue to engage, connect, and educate diverse community audiences through delivery of wide-ranging activities and events.</li><li>• Income generation from events</li><li>• Local development (of former GSK site) that could bring opportunity for funding and site enhancements</li></ul>	<b>THREATS</b> <ul style="list-style-type: none"><li>• Anti-social behaviour and site security</li><li>• Impact on biodiversity and landscaping from events</li><li>• Climate change/ disease/drought/pests and invasives</li><li>• End of NHLF funding for NPM and LVC posts in Sept 2025 and Apprentice end Jan 2025</li><li>• Impact on park quality and visitor satisfaction if funding not secured to maintain posts</li></ul>







# How do we get there?

## Vision & Objectives

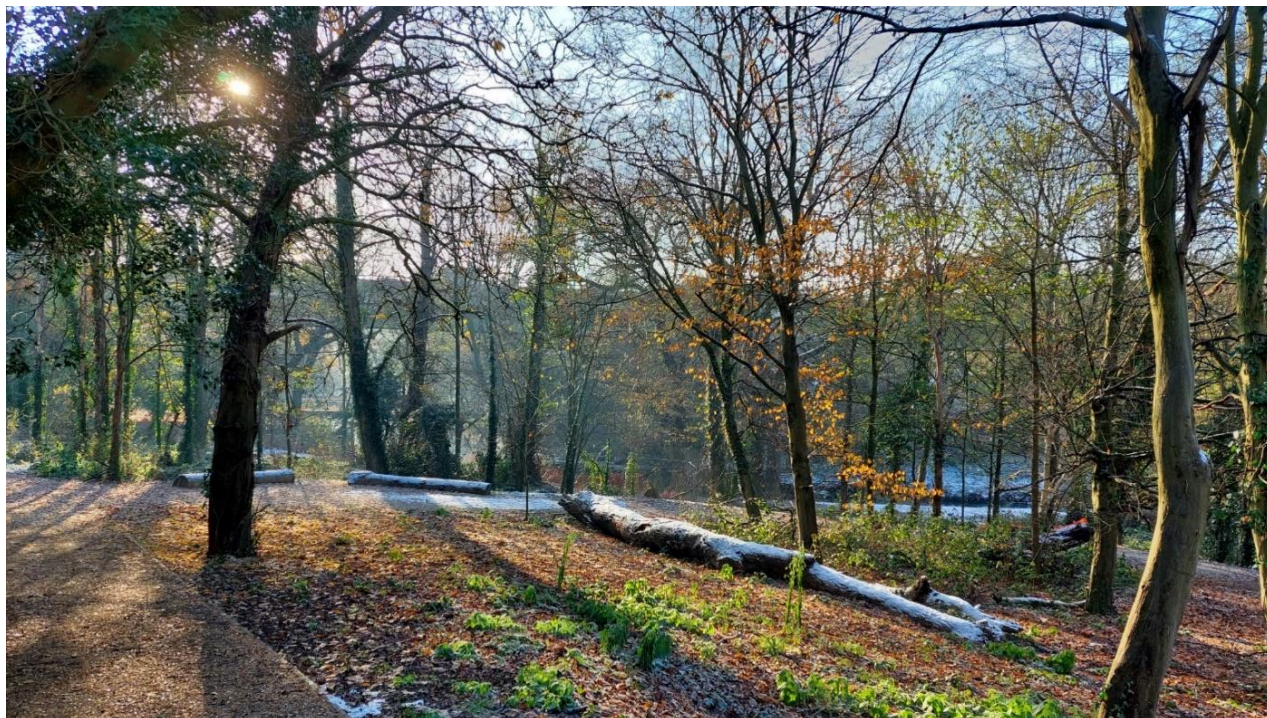
Vision for Boston Manor Park:

“The Friends of Boston Manor, the London Borough of Hounslow and Lampton Greenspace will work together to create and maintain an exemplary center for community involvement and enjoyment, and which is wildlife friendly, sustainable, resilient to climate change, and safe and accessible to all.”

### Key objectives for Boston Manor Park are:

- To continue to work closely with key stakeholders, volunteers, the Friends group and to maintain and improve the facilities.
- To ensure that Boston Manor Park is a place that is secure, safe to use and is clean and well maintained.
- To ensure that the management of the landscape maintains the heritage character of the park.
- To ensure that the park is promoted and managed to provide a high-quality service for the people using it.
- To continue to encourage and promote community involvement in the management of the park.
- To ensure that the management of the park protects and enhances the biodiversity of the site and borough.
- Provide and improve opportunities for good health and well-being.
- Creating opportunities for connecting green spaces for wildlife and increasing the boroughs ecological resilience and connectivity

## Meeting the Green Flag Award Criteria



*Accessible woodland nature trail*

## Management of Boston Manor Park

This sets out guidelines and general principles to be followed in delivering the vision and objectives outlined above.

Management of the open space needs to deliver high standards of maintenance of the soft and hard landscaping of Boston Manor Park within existing revenue budgets and through capital infrastructure funding opportunities.

## Delivery Partners

The Council works pro-actively with key park stakeholders and consults with local people regarding their views of the facilities and any impact that is made on their lives. Continuing this relationship is a very high priority for the management of the open space.

GS are responsible for maintaining all the parks and open spaces within the LBH Parks Service. Maintenance is carried out by the contractors' operatives who have the necessary skills to achieve high and consistent horticultural standards. Volunteers led by the Natural Park Manager also contribute hundreds of hours each month carrying out horticultural and conservation tasks all around the site.



## A Welcoming Place

The following management regimes all play a part in ensuring that Boston Manor Park continues to be a welcoming area.

### Graffiti Removal

As part of our aim to make the borough safe, green, and clean we are committed to reducing and removing graffiti. The site will be regularly inspected for graffiti. All graffiti will be removed within 7 days of notification, where the graffiti is racist or offensive it will be removed within 24 hours of notification.

### Signage

Park signage will be kept clean and is regularly inspected, any repairs will be carried out promptly. For more information, please refer to the “Marketing Section” below.

### Pathways

All paths and hard surfaces will be inspected annually. Any necessary repairs will be reviewed, and funding opportunities explored with the aim of rectification as soon possible. Boston Manor Park has various formal pathways and accessible trails, as well as more informal pathways across the park.

### Visibility

Vegetation will be reduced so that where possible site lines are achieved across the site.

## Healthy, Safe & Secure

The following management regimes all play a part in ensuring that Boston Manor Park continues to be a healthy, safe, and secure place.

### Health & Wellbeing

We recognise the benefits that our green spaces can make to the health of our residents.

We are committed to developing active environments that enhance leisure, sport, physical activity and play opportunities in priority areas.

The Councils [Playing Pitch Strategy](#) in particular, identifies needs for sports facility improvements and sets out priority projects for delivery in partnership with key stakeholders. We collaborate with Council services to ensure that our approach supports the broader Council strategies around health and wellbeing and together with Active Travel team, Leisure Services, Transport, Public Health, Community Development team and the local community we aim to deliver these improvements.

#### Useful Links:

- [Health and Wellbeing Strategy 2023-26](#)
- [Data Hub](#)

### Healthy Hounslow

Healthy Hounslow is a partnership between several organisations supporting people in leading healthier lifestyles; to become more active, eat well and stop smoking. The partners that make up Healthy Hounslow are Hounslow Council, West London Trust, Feltham & Bedfont Primary Care Network, MoreLife, Maximus/BeeZee and Lampton Leisure. The services and support offered by Healthy Hounslow are: Smoking cessation, Health and wellbeing coaching, Healthy weight management, Exercise on referral, Cook and eat sessions, and Community NHS Health Checks.



You can find out all about Healthy Hounslow at our website [www.healthyhounslow.co.uk](http://www.healthyhounslow.co.uk)

### Move More Hounslow Activity Map

- Available online to be [here](#).
- Map shows most parks in the borough that have a multitude of free activities available.



### Site Safety

All GS staff and contractors play an important role in terms of a visible staff presence. All are uniformed and where necessary will wear highly visible clothing. All works will have been risk assessed to ensure the highest level of public safety.

### Control of Dogs

Most dog owners act responsibly and keep their pets under control. However, the council continues to receive comments and complaints from residents about the behaviour of some dogs and irresponsible dog owners within parks and open spaces.

In response to this, the council is holding a public consultation process to gather residents' opinions about a variety of dog control related issues. The feedback will help us decide whether to introduce a dog control public space protection order (PSPO).

PSPOs are aimed at ensuring public spaces can be enjoyed free from anti-social behaviour. They are not about stopping the responsible use of public spaces - but they do provide councils with a tool to tackle persistent issues that are damaging their communities. For more information on the status and findings from the dog PSPO consultation please see the webpage [here](#).

Boston Manor Park welcomes responsible dog owners. The play area and fenced sports areas are already dog exclusion zones, and this has been reflected in the PSPO consultation.





## Community Safety

Hounslow Community Safety Partnership (HCSP) is responsible for reducing crime, disorder, and substance misuse in the London Borough of Hounslow. Along with other supporting partners, HCSP brings together key local agencies including:

- London Borough of Hounslow – Safer Communities Team
- Metropolitan Police Service (Hounslow Division)
- Hounslow district of the National Probation Service
- Hounslow NHS Trust
- London Fire and Emergency Planning Authority
- [www.hounslow.gov.uk/community-safety](http://www.hounslow.gov.uk/community-safety)

The Council's Enforcement Team have responsibility for overseeing Community Safety in the boroughs' parks and open spaces. They walk through parks to show presence and work with the Parks Team and GS to target regular occurrences of ASB. Occasionally a joint task force operation including those above is required i.e., rough sleeping, food dumping, drinking and drug misuse.

In 2024, Hounslow Council established a Violence Against Women and Girls (VAWG) Steering Group focused on addressing VAWG issues in parks and open spaces. This group identifies short term and long-term strategies and opportunities for partnership development. Key approaches include clearing sightlines, encouraging natural surveillance, and fostering a sense of ownership within these spaces through vegetation removal, raising tree canopies, encouraging volunteering in parks, and organising police walk and talks. The team have also been working closely with:

- London Borough of Hounslow – Domestic Violence Reduction Unit
- London Borough of Hounslow – Rough Sleepers Unit

Additionally, they contribute to the WA – BCU (West Area – Borough Command Unit) meetings, which include boroughs of Hounslow, Hillingdon, and Ealing.

## Well Maintained & Clean

The following regimes are designed to ensure that Boston Manor Park is clean and well maintained.

### Grass Maintenance

GS employ several different regimes to manage and maintain grass areas within our parks and open spaces. Generally, grass areas are managed either as amenity grassland, rough grassland, or as wildflower meadow. Within many of our larger parks, the grass is left uncut as part of the annual No Mow May campaign which was also referred to as [Hounslow's Natural Summer](#) in 2024. For more information see the Council's webpage [here](#).

Boston Manor Park consists mainly of amenity grassland, with smaller areas of rough grassland and a wildflower meadow in the lower field near to the Grand Union Canal.

### Amenity Grassland

Amenity grassland consists of areas used for general recreation, and formal and informal sports, and can include wide-open spaces or those areas planted with trees and shrubs. These areas are regularly cut during the growing season, to ensure they can continue to be used for recreation throughout the year (see Annual Grounds Maintenance Work Schedule). Grass edges, whether they are against paths, fences or walls will be cut at the same time as the rest of the grass using strimmer's in most areas.





### Rough Grassland

Rough grassland consists of areas which are cut less frequently generally 2-3 times a year. These are usually areas which are less accessible to the public and help support beneficial insects and small mammals, as well as protect features such as boundaries, hedges, and ponds.

### Wildflower Meadows

Wildflower meadows are areas which are actively managed and promoted as wildlife areas. They are suitably prepared, sown and protected by GS, to ensure they establish and flourish to help promote pollinators, and to increase the biodiversity within the open space. They are clearly marked out, with interpretation boards to help inform the public about the benefits of wildflower meadows and how they are managed. For more information about wildflower meadows and how we managed them, please see the Council webpages [here](#).

### Trees

Trees are an incredibly significant feature in the borough's parks and open spaces. They provide a variety of benefits not only to visitors but to the overall environment of an area, creating habitats and providing natural shade. They form an important part of the borough's green infrastructure, and this is reflected within the council's [Green Infrastructure Strategy](#).

### Tree Maintenance

To ensure that trees continue to contribute to the landscape it is essential that we think about their health and safety. Trees within parks and open spaces are subject to inspection by suitably qualified and experienced GS Arboriculturists. This is to identify and remedy any unacceptable risks to people using the sites, or the removal of trees that are extensively decayed compromising their structural integrity. Tree pruning is only carried out where necessary for risk management purposes or where formative pruning is necessary; this approach allows Hounslow's parks to retain a natural landscape with well-formed specimens.

Hounslow Council works closely with Friends, Councillors and Lampton Services Greenspace tree team to consider the tree population within Boston Manor Park to make improvements and ensure that there is continuity in the way that the trees are managed.

### Tree Planting

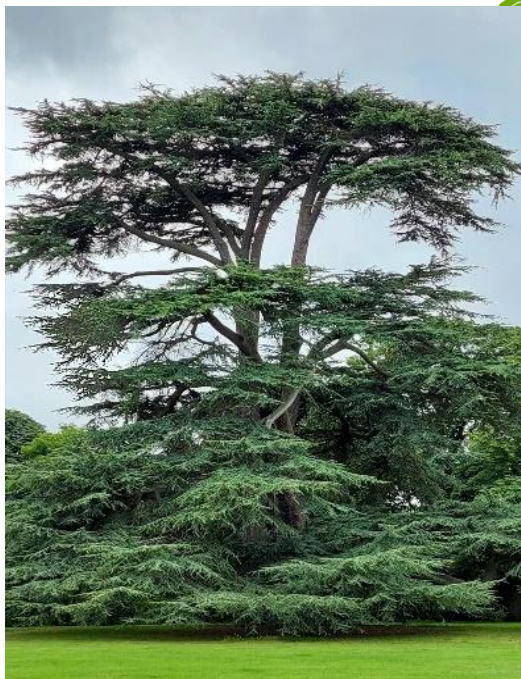
Between 2020 and 2024 the Council set ambitious tree planting targets, successfully planting over 25,000 new trees and whips in parks and open spaces. This formed one of the main ongoing targets set out in the [Green Infrastructure Strategy](#). Over 300 trees were planted in Boston Manor Park as part of the restoration project, with more planting of whips and specimen trees as outlined in the Action Plan and Appendix 5.

Boston Manor Park contains approx. 29 groups of trees, including veteran Cedars, oaks, mulberry and yews in the parkland around Boston Manor House and veteran oaks and sweet chestnuts in the woodland. The predominantly native woodland and orchards provide a good diversity of species to support wildlife.





Over 300 trees were planted as part of the Reconnecting Boston Manor Park restoration project.



The heritage Cedar of Lebanon Tree on the main lawn, planted by Sir James Clitheroe in 1754

For more information on tree planting locations and species, please see the Council webpages [here](#)

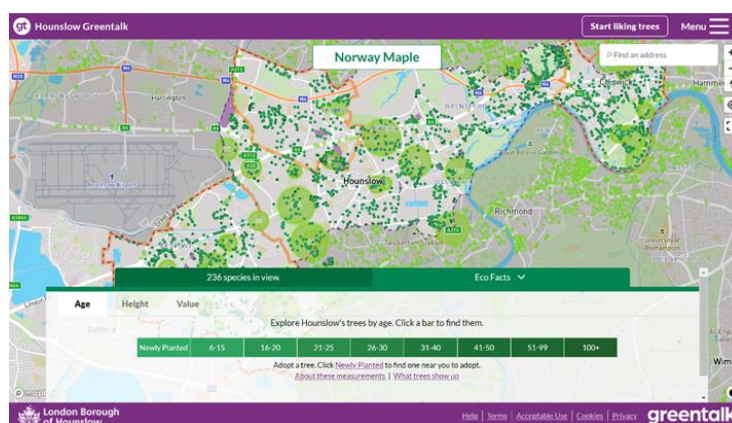
## Greentalk

Hounslow Greentalk is an innovative new platform developed as a bespoke resource for Hounslow residents. It has lots of clever features to help explore public trees and make a positive difference to the environment. The platform provides a unique opportunity for Hounslow residents to adopt newly planted trees and help their borough become greener.

Anyone who wants to find out about trees in the borough can use the Greentalk interactive map to explore their area through a tree focused perspective.

Other features include but not limited to:

- Adopting a tree
- Watering notifications
- Green walks
- Tree giveaways



Over 120,000 trees have been mapped, and around 33,000 can be liked by registered users. Liked trees are saved as favourites and can be accessed through the user profile. The data used to display all the information on Hounslow Greentalk is derived from the council's tree partners who manage the trees in the borough and regularly provide up-to-date information to keep the system as relevant as possible. If a resident is aware of a problem with a tree, Hounslow Greentalk can help them report the exact tree with the right information to the relevant tree partner.

For more information, please visit [Hounslow Greentalk](#)



## Wetland Management

### Ponds & Lake Maintenance

GS manage and maintain water areas within Hounslow's parks and open spaces. This includes but is not limited to; removal of litter, debris, fallen trees/branches, dead foliage, and aquatic plants from the water feature/pond. Invasive aquatic "weed" species i.e., Spirogyra sp. (Blanket Weed) or Wolffia sp. (Duck Weed) are controlled, by removal.

### Water Safety

GS also ensure that water areas are safe, carrying out water safety audits, installing buoyancy aids and routine checks especially during extreme icy or hot weather conditions. These measures help ensure that all our water features and ponds remain healthy, encourage wildlife and are aesthetically pleasing and safe for all parks users. Standards are achieved by following guidance provided by BS7370-5: 1998 Recommendations for the Maintenance of Water Areas.

The Council hold fire and water safety groups which are managed and coordinated by the Emergency Planning Team, with various teams and organisations involved, including, the LBH Parks Team, GS Team, Lampton Group Health and Safety Manager, London Fire Brigade, and others. Boston Manor Park is a priority site in these meetings, and its management is continuously monitored to ensure its safety throughout the year. The recent restoration of the lake and river improvement works have further enhanced the appearance and safety of these features.



*Works on the pond restoration project 2023*



*Aerial view of the pond during the restoration works in 2023.*



*Restored Lake with new fencing and observation platform, wood revetments to retain the 700 tonnes of excavated silt.*



## Cleansing

The collection of litter is extremely important in maintaining the appearance of Hounslow's parks and open spaces and has a direct effect upon how people treat and respect the site. Litter is collected daily GS. There are also community clean up events on site run by staff, including by kayak.

## Furniture & Fittings

GS ensure that all furniture is clean and will check benches, notice boards and bins on a regular basis. Items will be cleaned when necessary. Any necessary repairs will be reviewed, and funding opportunities explored with the aim of rectification as soon possible.

## Playgrounds

All playgrounds are visually inspected a minimum of once per week (based upon site usage), a recorded quarterly operational inspection, and an annual inspection carried out by an independent inspector to ensure the playground meets ROSPA standards. Any hazards identified are dealt with accordingly and where necessary equipment will be cordoned off whilst repairs are scheduled.

The playground had additional items installed and repairs undertaken in March 2024, including a new toddler sensory and language development panel.

The exercise facilities are well used by members of public. The tennis courts are extremely popular, and the Friends of Boston Manor manage the club and maintenance of the courts. The park is popular for runners, cycling, orienteering, Geocaching, walking and basketball.



## Hard Surfaces

Hard surfaces will be kept clean with litter and leaves removed. Hard surfaces will be maintained in a weed free state with spot treatment weed spraying. Paths will be kept in a good state of repair and all paths being inspected annually. Any necessary repairs will be reviewed, and funding opportunities explored with the aim of rectification as soon possible. Drains and gulley's are inspected regularly as part of the Annual Infrastructure Survey.

## Buildings & Structures

GS manage and maintain most buildings and structures within our parks and open spaces. These include both buildings that are open and in use by the public (such as visitor centres, chapels, toilet blocks etc.) as well as disused buildings which are closed to the public.

All the buildings in this open space are in excellent condition following the park restoration project, which including a new Park Hub and complete refurbishment of old buildings. All buildings are managed with health and safety concerns being paramount, with regular visual inspections conducted, and all necessary building regulations adhered to (e.g., fire risk assessments etc.).



*New Park Hub building with classroom, toilets, office for park staff and cafe.*



*The Service Yard buildings are used regularly, for workshops and events. The Yard also includes toilet, storage rooms and fully stocked tool room.*

## Environmental Sustainability

The following regimes are designed to ensure that Boston Manor Park is managed in a sustainable way.

### Litter Recycling

All litter is taken to Transport Avenue, the West London Waste Authority site within Hounslow borough. It is then loaded onto trains and taken to an energy waste site in Avonmouth, where it is used as a renewable energy source.

### Green Waste Recycling

All green waste is either reused or recycled. Grass clippings are spread and left in situ in the park. Wood chippings are used on flowerbeds to provide a compost and a weed control. Other green waste (shrub pruning etc.) is taken to Transport Avenue Waste Disposal Site, where it is then transferred by road to a composting facility for processing.

### Pesticides

As a part of our commitment to ensuring a cleaner and greener Hounslow, the use of chemicals to treat weeds was stopped in 2020. This decision supports the Council's ambitions for a cleaner and greener borough and promotes biodiversity and encourages wildlife. This approach is now fully supported by GS in parks and open spaces, enabling the borough to become even more hospitable to plants and animals.



The use of specific herbicides will only be considered when it is not viable to use non-chemical alternatives, for example, controlling the spread of an invasive species such as Japanese Knotweed, as they are especially damaging to the environment.

Removing the use of herbicides does present operational challenges, herbicides have always been considered a cost-effective solution due to their less labour-intensive results. As such GS continue to assess and review their operational schedules to ensure that an adequate resource and suitable approach is applied to control weed growth.

### **Peat Use**

GS do not use peat, or any peat-based products within Hounslow's parks and open spaces.

### **Infrastructure**

GS follow the Council's procurement guidelines when sourcing replacement or new infrastructure items. This includes prioritising products made from recycled and environmentally and sustainably sourced materials wherever possible and financially feasible. For example, using trees felled onsite for seating and fence work, and sourcing fibreglass heritage litter bins to replace ironwork bins. Products made from tropical hardwoods and other unsustainable sources are not used. The new Park Hub building features energy saving ground source heat pump and sun hole lighting.

### **Fuel, Fleet & Power Tools**

#### **Fleet**

As part of an ongoing trial within the Lampton group, the GS fleet use an alternative diesel product, Hydrotreated Vegetable Oil Fuel (HVO). HVO meets OEM fuel specifications and is certified to be a 90% CO2 saving on normal diesel. This efficiency is better than current electric vehicles and is a great stop gap to future technologies given the age of the HGV fleet. It is hoped that a switch to HVO will help GS transition to low carbon technologies in a systematic way, giving time to manage various operational constraints limiting early adoption of electric vehicles.

#### **Power Tools**

GS are continuously trialing the use of electric power tools as alternative to 2 stroke machinery. They currently utilise several battery powered trimmers and blowers and continue to evaluate the effectiveness and development of the technology, and replacing older traditional machinery as it reaches end of life.







## Biodiversity & Heritage

We manage our parks and open spaces by ensuring that where possible we maintain a diverse range of age, species and structure in the canopy, understory and herb layers and aquatic spaces. This is achieved by:

- Managing site specific habitats such as acid grassland, meadows, mature veteran trees, rivers, ponds, aquatic margins, and woodlands.
- Supporting the borough's wildlife through interventions such as bird and bat boxes, hibernacula, stag beetle loggeries, aquatic ledges and educational signage.
- Enhancing existing aquatic and terrestrial habitats to support a diverse range of flora or fauna. e.g., lake de-silting, coppicing in woodland, revised mowing regime, planting for pollinators.
- Exploring opportunities to create new habitats such as wildflower meadows, native hedge planting, aquatic ledges.
- Introducing sympathetic mowing regimes where suitable
- Recognising the effects of climate change and prioritising sustainability through planting e.g., drought tolerant trees and plants., wildfires, floods, disease, biosecurity
- Creation of new habitats such as new wetlands scrapes, wildflower meadow enhancements, dead hedge building and native hedge planting, aquatic ledges.
- Educating the public about biodiversity and heritage through on-site interpretation, activity trails and park staff and local environmental groups and stakeholders delivering a range of events and activities for all ages to increase their awareness and understanding.
- Promoting and delivering volunteering opportunities to increase health and well-being and raise awareness and understanding of biodiversity and heritage for the local and wider community. Regular volunteering in horticulture, conservation suitable/ aimed for range of ages, e.g., Youth volunteering, schools' engagement, weekly conservation/gardening sessions, corporate and community groups, monthly bird walk and surveys; regular bat walks April-Oct, regular walks and talks on a variety of themes.
- Managing invasive non-native species (INNS) e.g., Japanese Knotweed, Pennywort, Himalayan Balsam. In 2021 LBH commissioned a baseline report of Invasive species Parks and open spaces portfolio, surveying 195 sites. This information was used to procure a specialist contractor to remove targeted species over a five-year period beginning in April 2025 and running for 5 years. This will seek to eradicate: Japanese Knotweed, Giant Hogweed, and floating Pennywort, and provide advice on how to deal with Himalayan balsam.
- Biosecurity – Anyone responsible for plant supplies must ensure that all plants and associated soil are supplied free of pest and disease at all points in the supply chain. To achieve this, GS consider the latency period and life cycles of all pests and diseases. Special attention to biosecurity is given to imported stock.





- GS procurement will always prioritise suppliers that are able to demonstrate a supply chain audit trail (for example, are part of a recognised Plant Health Assurance scheme) that ensures plant material sourced within the UK is under a regime of biosecurity-aware production and follow nationally agreed good practice guidelines.
- Events are managed with environmental protection and enhancement in mind – see below (under Community Involvement), Junction 2 Festival Environmental Improvement Fund
- We aim to create a network of green spaces within Hounslow that support a range of habitats and link together to bring interest and green connectivity.

The Nature Recovery Action Plan (NRAP) is a part of Hounslow's Greener Borough Framework and was adopted in 2023. A stakeholder board -Nature Recovery Stakeholder Board (NRSB) was launched in February 2024 and is led by the Nature Recovery Manager with quarterly meetings held in various locations across the borough. Currently planning the 4th meeting to be held in February 2025. More information can be found [here](#).





## Community Involvement

This is crucial to the management of Boston Manor Park and will continue to be of the utmost importance.

### Friends Groups

The Council works closely with Friends groups and encourages them in their efforts to apply for grants and maintain assets. We also engage with other community groups and third parties to encourage and ensure opportunities for the needs and requirements of a diverse borough population.

The Parks Team provide support for applications to the Council's Thriving Communities Fund. More information about the scheme can be found on the Council webpages [here](#).

Hounslow Friends of Parks Forum holds quarterly meetings. The forums are facilitated by [Habitats & Heritage](#) who are a west London based organisation who help support new and established Friends Groups. The Friends of Parks provides a support network, and to provide opportunities to build relationships that are based on collaboration.

### Partnerships

Boston Manor Park staff have created partnerships with local organisations that support their work in the park, for example with Ealing Hedgehog Friends raising awareness of hedgehogs in the park, (training, events, social media, talks, park posters and monthly updated bulletin board by the Hub,) how people can help maintain their presence through good practice (habitat and enclosure creation and keeping dogs out of nesting areas) and being a local rescue service for injured hedgehogs when found. There is also a Dog Walkers network, and partnerships with Wild Chiswick, West London Birders and Ealing Wildlife Group who we collaborate with for training/activity, events and awareness raising.

### Volunteering

The Council and GS work with the public to inform, educate, and volunteer in managing habitats through event opportunities and specific projects such as school planting in greenspaces, green gyms, tree planting and habitat surveying. Community involvement and engagement in nature conservation projects helps to increase the health and wellbeing of our residents.

The GS Countryside Team help manage and coordinate several volunteer groups across the borough. More information can be found on the Parks Hub webpages [here](#). The Council also has an Environmental Champions Scheme, more information available on the website [here](#)

The Natural Park Manager leads weekly and weekend volunteering horticulture, food growing and conservation sessions to work on tasks and biodiversity enhancements around the park. We have an active volunteering program (biodiversity, events, horticulture), engaging with residents, local community, and corporate groups and a youth and vulnerable young people volunteering programme, which includes volunteering and work experience for children excluded from mainstream education and SEND/ neuro-divergent youth aged 16-25yrs.







## Marketing

Promotion and marketing of Boston Manor Park is carried out by means of a range of measures to ensure that local people and visitors to the borough are aware of the facility.



*Volunteers helping out around the park,, harvesting beans, planting in the woodland.*

## Entrance Signage

There are Welcome signs located at every entrance. There are notices on site used to promote work in the park and activities and events. The events noticeboard is located opposite the Park Hub, and we also have a blackboard to pick out the week's events.



*Left, events noticeboard, and right new welcome signage*





## Signage Refresh

The Parks Team have secured significant funding for a borough-wide refresh of all parks and open spaces signage. The signage was designed in partnership with Friends, local community groups and other stakeholders to ensure they are designed in consultation with our park's users. The design principles focus on inclusivity, using pictograms and maps to illustrate the facilities available in the park and the surrounding area. The programme was completed in Autumn 2024.

For more information and examples of the new signage please visit the Council webpages [here](#).

## Web & Press

The Council's website has a dedicated Parks and Open Spaces section which can be found [here](#). You can find general information about the service, with useful links, advice, and reporting channels for customers to use.

Consultation and Engagement platform Let's Talk Hounslow has a new dedicated Parks Hub which includes current consultations, surveys, and live projects, as well as a digital noticeboard. Boston Manor Park's volunteering opportunities, events and activity trails are included on the [Parks Hub page](#)

The Council also has an active social media presence on [Facebook](#) and [X](#) with the handle @LBofHounslow.

The council's website, has a Reconnecting Boston Manor Park project page, with events, activities and volunteering page and project blog: <https://www.hounslow.gov.uk/BostonManorPark>

Both the Natural Park Manager and Learning and Volunteer Coordinator have active Facebook profiles and post regularly on their own, and neighbourhood groups about the park and their events and activities. They set up and run the Facebook page: Boston Manor Park Outdoor events and activities to share their events <https://www.facebook.com/BMPoutdoorevents>

Boston Manor's events, activities and volunteering monthly newsletter emailed out to over 1600 people.

Hounslow Family Service Directory and the Schools e-newsletter bulletin are also both updated with BMP events.

To create community awareness for all its facilities the Council regularly produces articles and press releases about activities and facility development. The Council publishes a regular newsletter, Hounslow Matters, which is provided to all residents and includes news and information about our services, including parks and open spaces. To download the last publication please follow the link [here](#).

Hounslow also has several other websites which are designed to engage with the wider community about our services and the opportunities available in Hounslow. Please visit, [HounslowConnect](#) and [InHounslow](#) for more information.

The park's activity trails are also hosted on the [Ealing Parks Foundation](#) website.

The Friends of Boston Manor website [www.friendsofbostonmanor.com](http://www.friendsofbostonmanor.com)







Promotion through the London National Park City [www.nationalparkcity.london](http://www.nationalparkcity.london)

London National Park City Mini-Guide for Hounslow, celebrating Hounslow's great outdoors  
[Hounslow's Mini Guide](#)

## Events

The Council encourages the hire of parks to appropriate organisations for commercial and community events. Events are held in accordance with the Parks and Open Spaces Events Policy found on the council webpages [here](#).

### Upcoming events in 2025:

- **'Junction 2'** is a techno music festival that has been running onsite for years between 2016-2019 and returned after the park works were completed in July 2023. The festival has several stages set out across the lower and upper meadows, with hidden stages and mini bar areas in the woodlands. The event has grown from being a one-day festival, to now being a three- day festival (Fri-Sunday). The event is successful, attracting up to 15,000 people per day.
- As part of their environmental policy, organisers implemented various processes to be a more sustainable event, such as reusable or recycled site décor, banning single use vapes, multiple recycling bins, bungee cords in place of cable ties, cup swapping for drinks tokens and water fountains in place of plastic water bottles.
- Junction 2 event fees now include an Environmental Improvement Fund dedicated to protecting and enhancing the biodiversity of the site in accordance with the Natural Park Manager's Management Plan.
- **The Potting Shed café and Arts Centre** run private hires of the Activity room and Walled Garden (e.g. for birthday parties) and run public events such as summer theatre productions, beer festival and comedy nights in the Walled Garden
- LBH is currently in the process of tendering out the **Boston Manor Arts Market (BAM)** for delivery of a regular arts and crafts market under the M4
- **Spartans'** local youth football club use the upper meadow.
- **Film shoots and unit base locations** at Boston Manor House, Boston Manor Park, and Clitheroe Island. SLA required between Film Fixers and Parks to help manage appropriately.
- The Natural Park Manager and Learning and Volunteer Coordinator run events year-round for the local community, groups and third parties in the site, engaging diverse audiences. Themes are wide-ranging, including health and well-being, heritage, nature, conservation, horticulture and creative arts and culture.
- Their annual large event is the free **Nature Festival**, featuring local arts and crafts, green and environmental organisations, petting zoo, music, and free crafting activities. This attracts approx. 1800 visitors. See Appendix 4 Events overview for more detail.



# How do we know we have arrived?

## Monitoring & Review

This management plan has been designed as a live document that will guide development in the park over the next five years. Progress will be subject to monitoring and review to measure success and delivery of aims.

Members of the Greenspace Parks team regularly visit the site to monitor progress against the action plan; the results of these visits are then discussed at monthly management and meetings with Friends.

LBH Parks Officers work closely with GS and the Friends group to monitor progress and discuss future. This includes:

- Performance against the requirements of the Management Plan
- Provision and analysis of infrastructure surveys
- Provision and analysis of asset surveys
- KPI's and performance monitoring

An annual SWOT analysis will be carried out by all stakeholders and, together with the information gathered from all the monitoring methods will be recorded and fed into annually updated management plans.

GFA Judges feedback and award outcome will enable continuous learning, development and improvement by all partners involved in the award process. Discussed at monthly Parks and GS management meetings and meetings with Stakeholders

## Action Planning

Our action plan for Boston Manor Park provided in Appendix 1. This plan is based on an evaluation of the SWOT analysis together with other projects and plans raised by the key stakeholders. The action plan lists actions and categorises based on timescales and the Green Flag award criteria. The plan will also allocate ownership for each task to the key stakeholders:



*Tash, Learning and Volunteer Coordinator (left) and Vanessa, Natural Park Manager (right).*

## A decorative graphic of a tree branch with green leaves, positioned in the top right corner of the page.

## Boston Manor Park | Green Flag Award | Action Plan Updated 2025

## Key to Action Plan

Green Flag Award Criteria		Stakeholders		Delivery Timescales	
W	Welcoming Place	LBH	Parks Service Management Team	S	Short term (less than 1 year)
H	Healthy, Safe and Secure	GS	Lampton Greenspace	M	Medium term (1 to 3 years)
WM	Well Maintained and Clean	NPM	Natural Park Manager	L	Long term (3+ years)
S	Sustainability	LVC	Learning and Volunteer Co-ordinator	O	Ongoing
BH	Biodiversity and Heritage	FoBM	Friends of Boston Manor Park		
C	Community	Vols	Volunteers		
Mkt	Marketing	PS	Potting Shed		
Mgt	Management				

MANAGEMENT ACTION	STAKE-HOLDER	GREEN FLAG CRITERIA	TIME-SCALE	STATUS 2025
1. Maintain a healthy tree stock, including veteran trees, with opportunities identified for new tree planting (ref: Updated 10 yr. MAP vii Existing mature trees/ Veteran trees, viii New trees, x Woodland, xi wet woodland, xvii Clitheroe Island)	LBH, GS, NPM, Vols	W, H, WM, S, BH, C, Mgt	<p>O</p> <p>O</p> <p>S</p> <p>O</p> <p>O</p> <p>S</p>	<ul style="list-style-type: none"> <li>Over 300 new trees planted in 2022 as part of the NLHF project trees</li> <li>Watering and maintenance of new trees including orchard and Walled Garden trees and espaliers carried out by volunteers and Apprentice trained by NPM.</li> <li>Annual coppicing of hazel in sections on rotation carried out by tree team or by vols if appropriate size. Use materials for dead hedging/ garden</li> <li>Medium sized sapling oaks pollarded by NPM winter 2023/4 to create veterans of the future</li> <li>Mini forest planted by vols on Clitheroe Is winter 2023/4</li> <li>Wet woodland (birch and alder) standards and (300) tree whips will be planted in different areas of woodland and wet woodland in winter 2024/5</li> <li>All tree works are carried out and maintained by GS in compliance with LBH policies and procedures and UK legislation.</li> <li>Veteran trees inspected by tree team.</li> <li>Veteran trees have dead hedges built around them to protect from damage and soil compaction. Minimum 2 more dead hedges planned for 2025.</li> </ul>
2. Maintain high horticultural standards to increase biodiversity, heritage, cultural and	LBH, GS, NPM, Vols	W, WM, S, BH, C, Mgt	S up to end of Sept 2025/O if	<ul style="list-style-type: none"> <li>Planting in walled garden completed in stages by NPM/vols over 2023-5.</li> <li>NPM trains volunteers during sessions covering a range of</li> </ul>

community/amenity value, with training for volunteers to be able to supplement /support Lampton Greenspace to maintain in the future (Ref: Updated 10 yr. MAP v shrubs and ground covers vi Herbaceous perennials; xiv native hedge, vii Existing mature trees/ Veteran trees, viii New trees, x Woodland, xi wet woodland)			<p>funding secured to keep NPM (and LVC) posts beyond Sept 2025 S</p> <p>S</p> <p>M</p> <p>S / O as above re-funding posts</p>	<p>horticultural skills and maintenance including weeding, pruning (of shrubs, espaliers, and herbaceous perennials), deadheading, staking, tying in, watering, mulching, composting etc.</p> <ul style="list-style-type: none"> <li>• NPM to use 10 yr. MAP to create and share with vols calendar of maintenance tasks for walled garden, long border, formal beds, woodland, lake, and hedges for vols to use as guide (2025).</li> <li>• NPM to create WhatsApp group (2025) for regular vols and NPM to share horticulture tasks for each week.</li> <li>• Wild heart Foundation principally to maintain veg beds working with children and families with autism in 2025 onwards</li> <li>• NPM and LVC (and some local experts) engage wide audiences in themed walks, talks, activities, and events to raise awareness of the value of these areas.</li> </ul>
3. Enhanced woodland and wet woodland management and maintenance programme to increase biodiversity, heritage, and community/amenity value (ref: Updated 10 yr. MAP vii Existing mature trees/ Veteran trees, viii New trees, x Woodland, xi wet woodland, xvii Clitheroe Island, xvi wetland scrapes, meadow, and scrub)	LBH, GS, NPM, LVC, Vols	S, BH, C	<p>S</p> <p>S</p> <p>S</p> <p>S</p> <p>S/ O as above re-funding posts</p>	<ul style="list-style-type: none"> <li>• Large Stag beetle loggeries created 2020, 2023, and 2024.</li> <li>• 12 bat boxes and 20 bird boxes erected 2022.</li> <li>• Install metal plates on bird box holes (outside of nesting season) 2025 to keep parakeets out of boxes</li> <li>• Installed 2 hedgehog enclosures (wire fencing around hibernacula, with gauge holes large enough for hedgehogs to access, but small enough to keep dogs out) in 2024, with minimum 1 more planned for 2025. Informal signage to explain to public about conservation activities (hedgehogs) and need for dog control.</li> <li>• Installed 6 hibernacula in 2024 and minimum 6 more planned for 2025.</li> <li>• Dead hedges built around key veteran trees. Minimum 2 more planned for 2025 (with one being around one of the wetland scrapes to prevent dog access and therefore encourage more aquatic wildlife breeding)</li> <li>• See 1. For tree planting and maintenance</li> <li>• Over 12,500 native woodland bulbs planted from 2022-2024</li> <li>• NPM and LVC (and some local experts) engage wide audiences in biodiversity themed walks, talks, activities, and events to raise awareness of the importance of these habitats and their heritage value and carry out work to protect/enhance them.</li> </ul>



				<ul style="list-style-type: none"> <li>Permanent biodiversity related informative interpretation signage installed in woodlands 2024</li> </ul>
4. Enhanced meadow planting and improved maintenance programme to increase biodiversity, community/amenity value, and reduce maintenance demands (ref: Updated 10 yr. MAP iii Grassland Meadow, xvi wetland scrapes, meadow, and scrub).	LBH, GS, NPM, Vols	W, S, BH, C, Mgt	<p>O</p> <p>S</p> <p>S/ O as above re-funding posts</p> <p>S/ O as above re-funding posts</p>	<ul style="list-style-type: none"> <li>Wetland scrapes created as part of the HLF project.</li> <li>Over 2,500 wildflower plugs planted in 2024</li> <li>NPM reviews mowing programme and changed pattern from 2021 onwards with regular review to enhance biodiversity and community access/amenity (e.g. change areas from regular grass to meadow cut, which sections to leave uncut over winter, expand cut to wetland area, open up riverside walk adjacent to meadow)</li> <li>Improve biodiversity of formerly mown grass section with short cut and clear, followed by shallow rotorvation and overseeding with spring flowering mix and yellow rattle planned for autumn 2025, funded by J2 Env Improvement fund</li> <li>NPM works regularly (weekly and weekend sessions) with and recruits volunteers/groups to maintain and enhance habitats, to improve and monitor biodiversity and to mitigate potential injury to wildlife when mowing sessions are imminent</li> <li>NPM and LVC (and some local experts) engage wide audiences in biodiversity themed walks, talks, activities, and events to raise awareness of the importance of these habitats and carry out work to protect/enhance them.</li> <li>Permanent biodiversity related informative interpretation signage installed in meadow and wetlands 2024</li> </ul>
5. Enhance biodiversity, heritage, and community/amenity value for riparian and lake habitats (Ref Updated 10 yr. MAP xii river Brent margins, xiii lake)	LBH, GS, NPM	W, S, BH, C, Mgt	<p>S</p> <p>M</p> <p>S</p>	<ul style="list-style-type: none"> <li>Investment in habitat creation and enhancement as part of the HLF project, including lake restoration.</li> <li>£20k Water Environment Improvement Fund secured from EA delivered river restoration works (large wood flow deflectors and brash berms installed) in 2022</li> <li>Artificial planting banks and wildlife ramps installed in lake 2023/4 by NPM/vols</li> <li>EA funded eel and fish pass feasibility study and detailed design work, ongoing 2023-25.</li> <li>Aiming to secure funding for fish pass installation in 2026</li> <li>Riparian bank stabilisation works planned 2025 funded by J2 Environmental Improvement Fund</li> <li>Floating reed pontoons in lake to provide aquatic marginal planting</li> </ul>

			S  S / O as above re-funding posts	<p>habitat planned 2025 funded by J2 Environmental Improvement Fund</p> <ul style="list-style-type: none"> <li>NPM and LVC (and some local experts) engage wide audiences in biodiversity themed walks, talks, activities, and events to raise awareness of the importance of these habitats and carry out work to protect/enhance them.</li> <li>Interpretation signage (heritage and wildlife/habitat) installed 2024</li> </ul>
6. Continue to offer and expand volunteering opportunities and corporate days	LBH, GS, NPM, LVC, Vols	W, WM, S, BH, C, Mkt	<p>S / O as above re-funding posts</p> <p>L</p> <p>S / O as above re-funding posts</p> <p>S / O as above re-funding posts</p> <p>S with aim to sustain M/L</p>	<ul style="list-style-type: none"> <li>Ongoing: weekly conservation and horticultural (including veg growing) volunteering sessions, corporate days, and sessions at weekends to maintain woodland, meadow, riparian areas, orchard, veg and planting beds led by NPM, and by LVC for the Scouts and Youth volunteering groups, including SEND young adults and children. LVC also uses youth volunteers to support events.</li> <li>Partnerships developed from 2023 and ongoing with local experts and groups for wildlife monitoring, (creative and wildlife) education and conservation activities. Partnerships established with Wildheart Foundation (veg growing), Sky (regular Corp vols), Wild Chiswick, Ealing Wildlife Group, Ealing Hedgehog Friends, and West London Birders to support work and aim to continue on site even if funding were to end for /NPM and LVC posts.</li> <li>Local artists/experts donate time to deliver events and activities for free in return for promotion and raising awareness of their work e.g. arts/crafts, mosaic making, music, dancing, fitness</li> <li>Marketing of volunteering opportunities through social media, attending volunteering forums/events, via platforms groups/organisations (e.g. EHCVS)</li> <li>New volunteering role to be created in 2025 for vols to lead heritage tours of walled garden and veteran trees.</li> </ul>
7. Skills development for staff, volunteers, and local community	GS, FoBM, NPM, LVC	H, WM, S, BH, C	S/ O as above re. funding posts	<ul style="list-style-type: none"> <li>Ongoing. HLF activity plan delivery includes training for staff, volunteers and local community and GM Apprentice will complete in Jan 2025.</li> <li>Volunteers and community groups learn conservation, wildlife recording and protection, and horticultural (including veg growing) skills during sessions.</li> <li>Engagement and skill development with community and other groups, including young people (e.g., DofE, schools, SEND, University of West London, scout groups across</li> </ul>

				Ealing/Hounslow) during sessions and workshops
8. Work with LBH events to facilitate, manage and mitigate impact of external events in park	LBH, GS, NPM, PS	H, WM, S, BH, Mgt	L  S  M/ L   O   O  M	<ul style="list-style-type: none"> <li>Ongoing events management dialogue with LBH events team and NPM/GS, including site monitoring and reviews to mitigate impact and efficient delivery of rectifications where required</li> <li>New SLA for filming events and Parks in progress in 2025.</li> <li>Environmental Improvement Fund build into Junction 2 Festival event fees from 2023 to undertake biodiversity enhancements including wildflower meadow improvements, riverbank and lake enhancements and planting for wildlife/biodiversity (see 3., 4., 5.)</li> <li>J2 working closely with NPM to mitigate impact, including increased resident and site comms, changing date of event from 2023 to end of July (instead of start of June which meant meadow was cut at peak pollinator season), introducing more spring flowering species to wildflower meadows, and other sustainability enhancements e.g. water stations, increased, recycling facilities, no single use vapes, etc.</li> <li>PS runs events on site, working with NPM and events to manage</li> <li>Arts and crafts market out for tender in 2025 to run regular market</li> </ul>
9. To continue to facilitate and deliver events (including the NHLF Activity Plan) within Hounslow's parks and open spaces as part of an active community engagement agenda.	LBH, NPM, LVC, PS	BH, C, Mkt	O   O   O  S / O as above re funding posts	<ul style="list-style-type: none"> <li>Delivery and promotion of the Activity Plan as part of the HLF project facilitated by NPM and LVC. Activity plan engages a wide-ranging audiences in diverse events and activities including volunteering, conservation, well-being, health/sports/ fitness, developmental skills, heritage, arts, and culture. See overview of events (Appendix 4 for more details)</li> <li>Infrastructure features and improvements and self-guided trails supports self-led activities on site (e.g. basketball courts, orienteering trail, activity trail leaflets, website links to trails, Strava runs, tactile tree trail)</li> <li>Spartans YFC runs football training on site</li> <li>Promotion of events via BMP newsletter (over 1600 on email list), site posters/noticeboard, social media, website pages and via third party groups/orgs.</li> </ul>
10. Park Hub Café - providing a 7 day a week community-interest café.	LBH, PS	W, C, Mkt, Mgt	O	<ul style="list-style-type: none"> <li>The Potting Shed café has been operating very successfully since June 2023</li> </ul>





			M O	<p>funding in long term to retain NPM/LVC roles beyond Sept '25</p> <ul style="list-style-type: none"> <li>• Work with park stakeholders to support funding bids as they develop</li> <li>• Quarterly Park stakeholder meetings.</li> </ul>
16. Evaluation of the NHLF park restoration project	LBH, NHLF, ERS (external consultants)	C, Mkt, Mgt	S M	<ul style="list-style-type: none"> <li>• ERS consultants have been appointed to evaluate the project.</li> <li>• Interim evaluation report delivered Nov. 2024</li> <li>• End of project report due by end 2025</li> <li>• Reports will be used to support future funding bids</li> </ul>
17. Continue to work with and support local groups, volunteers, services, and stakeholders to promote greening activities.	LBH, NPM, LVC	S, BH, C, Mkt	O  O  L	<ul style="list-style-type: none"> <li>• Regular sharing of events and activities via onsite posters, social media, and council comms</li> <li>• Regular engagement with local groups, services, and volunteers to support and recruit</li> <li>• Partnerships established with Wildheart Foundation (veg growing), Sky (regular corp vols), Wild Chiswick, Ealing Wildlife Group, Ealing Hedgehog Friends, and West London Birders to support work and aim to continue on site even if funding were to end for /NPM and LVC posts.</li> </ul>
18. Continue to publicise the park through LBH website, social media platforms and notice board. Also, borough wide campaigns, including achievement's, initiatives, and announcements.	LBH, GS, NPM, LVC	Mkt	O	<ul style="list-style-type: none"> <li>• Publicised through council comms and social media, FOBM, Countryside Rangers (GS), Boston Manor House, <a href="#">@BMPoutdoorevents Facebook page</a> and NPM and LVC Facebook profiles, on the <a href="#">Parks Hub page</a> and on <a href="https://www.hounslow.gov.uk/BostonManorPark">https://www.hounslow.gov.uk/BostonManorPark</a></li> <li>• Regular updates in park via posters and noticeboard.</li> </ul>
19. Support positive promotion of the park through external partners/groups, and other media platforms	LBH, GS, NPM, LVC, partners	C, Mkt	O	<ul style="list-style-type: none"> <li>• Promotion through partners, stakeholders, and external comms. and social media e.g., Hounslow Matters, Brentford Voice, Brentford Nub, FoBM, Ealing Wildlife Group, Nature in Hounslow Borough, Ealing Hedgehog Friends, Wild Chiswick, Facebook neighbourhood groups, Hounslow Connect, Hounslow Family Service Directory, Schools bulletin.</li> </ul>
20. The Management plan to be reviewed annually and the Action plan to be updated annually.	LBH, GS, FoBM, NPM	Mgt	O	<ul style="list-style-type: none"> <li>• Ongoing.</li> <li>• The 10 year MMP, which works alongside the GF Action Plan has also been updated (see excerpts in Appendix 5)</li> </ul>

# Appendix 2

## Annual Maintenance Work Schedules

The following table provides an overview of the annual maintenance work schedules. All frequencies are subject to seasonal variations, resource, and specific horticultural requirements. They are reviewed annually by the Operations Manager at GS to ensure they remain suitable and reflect any significant site changes. See “*Meeting the Green Flag Criteria*” section for more detailed management information.

Service	Frequency/Management information
<b>GM Summer works (March - October)</b>	<b>Managed by the Grounds Maintenance Teams</b>
<i>Amenity grassland cutting</i>	Once every 3 weeks
<i>Rough grassland cutting</i>	1-2 cuts per summer season
<i>Wildflower meadow cutting</i>	1-2 cuts per summer season
<i>Hedge &amp; shrub cutting</i>	1 “reduce cut” dependent on horticultural requirements
<b>GM Winter works (October – March)</b>	<b>Managed by the Grounds Maintenance Teams</b>
<i>Hedge &amp; shrub cutting</i>	1 “hard cut” dependent on horticultural requirements
<i>Pond clearance</i>	As required, dependent upon size and conditions
<i>Leaf clearance</i>	As required, from hard surfaces and grass areas
<b>Cleansing</b>	<b>Managed by the Cleansing Teams</b>
<i>Litter collection &amp; bin emptying</i>	<b>[site specific]</b> Daily, including bank holidays.
<i>Non-offensive graffiti removal</i>	Within 7 days of notification
<i>Offensive graffiti removal</i>	Within 24 hours of notification
<i>Fly tip removal.</i>	Within 48 hours of notification
<b>Playgrounds</b>	<b>Managed by the Playground Inspectors</b>
<i>Safety inspections</i>	1 visual inspection per week minimum (based upon site usage), quarterly “operational” inspections, recorded, annual independent inspections by the Royal Soc. for the Protection of Accidents (ROSPA), recorded.
<b>Infrastructure</b>	<b>Various teams/management</b>
<i>Cleansing (bins, benches, signs etc).</i>	As required, based on visual inspections and reports
<i>Lighting</i>	Inspections and repairs managed by Hounslow Highways
<i>Buildings</i>	All H&S checks conducted, electrical, fire, water, etc.
<b>Trees</b>	<b>Managed by the Tree Team</b>
<i>Tree inspections</i>	Annually
<i>Tree maintenance</i>	Based on previous inspections, prioritised by H&S
<i>Tree watering</i>	Summer: May – September (for trees under 3 years)
<i>Tree planting</i>	Winter: October – March
<b>Countryside Schedule</b>	
<i>Site safety checks</i>	Daily water and fire checks: buoys/banks, BBQs/firebreaks
<i>Conservation management</i>	Seasonal dependent on habitat types
<i>Volunteering sessions</i>	Frequency dependent on site
<b>Site Specific Features &amp; Services</b>	
<i>Natural Park Manager</i>	Leading horticultural and conservation tasks with volunteers and reports issues when found.





## Monitoring the Annual Maintenance Work Schedules

Members of the Parks Team conduct site visits to ensure that the work schedules are being adhered to and report issues to GS to resolve where necessary. Customer enquiries relating to maintenance issues are also routinely assessed to ensure they are rectified in a suitable and timely manner.

The Parks Team are currently working with the Ward Improvement Team to develop a new monitoring program, which we expect to be deployed in spring 2025.

The program will rely upon the Land Audit Management System (LAMS), developed by the Association of Public Service Excellence (APSE). This is an industry recognised approach, which many local authorities use to monitor the performance of their park services.

The program will also make use of and refer closely to the guidance provided by Parks for London in their recently updated Green Space Quality Manual. This provides valuable insight and understanding as to “what good looks like” and will help to ensure a consistent approach is taken during routine monitoring.

The new monitoring program will be periodically reviewed to help measure its success in improving the parks services. We expect it to help identify where there are issues and trends in performance to inform how best to deploy resource in the areas which require it the most.

For more information regarding the tools and approach that will be used for the monitoring program, please visit the [APSE LAMS](#) page and download the Parks for London [Green Space Quality Manual](#).



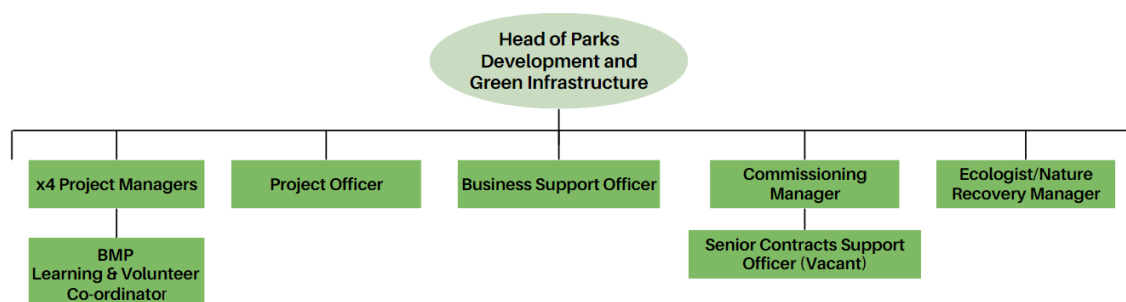
# Appendix 3

## Management Structure and Responsibilities

Boston Manor Park is owned and managed by the LBH and maintained by GS. Information below sets out the management structure and describes the roles and responsibilities of the key personnel involved in managing and maintaining the site.

## LBH Parks Service Management Structure

The Environment and Culture Directorate provide the following roles who are responsible for the management, and associated roles, of Hounslow's parks and open spaces:



### LBH Head of Parks Development and Green Infrastructure

Senior commissioning role for the management and partnership with GS, senior advisor in relation to parks and open spaces, strategy and policy development, Member's liaison.

### LBH Parks Project Managers (x4)

Project development and management, fundraising, community engagement and consultation, implementation, strategy, and policy setting.

### Parks Project Officer

Development and delivery of projects, fundraising, community engagement and support Head of Parks.

### Commissioning Manager

Supplier performance governance and relationship management, Legal and contracts, Planning/Commissioning, Operational Service delivery and business processes/systems.

### Senior Contracts Support Officer

Supplier performance, customer service and casework, community engagement and consultation, project support.

### Parks Business Support Officer

Assistance with finance; administration, project support and communications.

### Learning and Volunteer Coordinator – Boston Manor Park

Delivers the Activity Plan set out by the Heritage Lottery Fund as part of the Reconnecting Boston Manor Park project. Specialises in outdoor education, schools and community engagement and nature-based activities. Post funded up until the end of 2025.

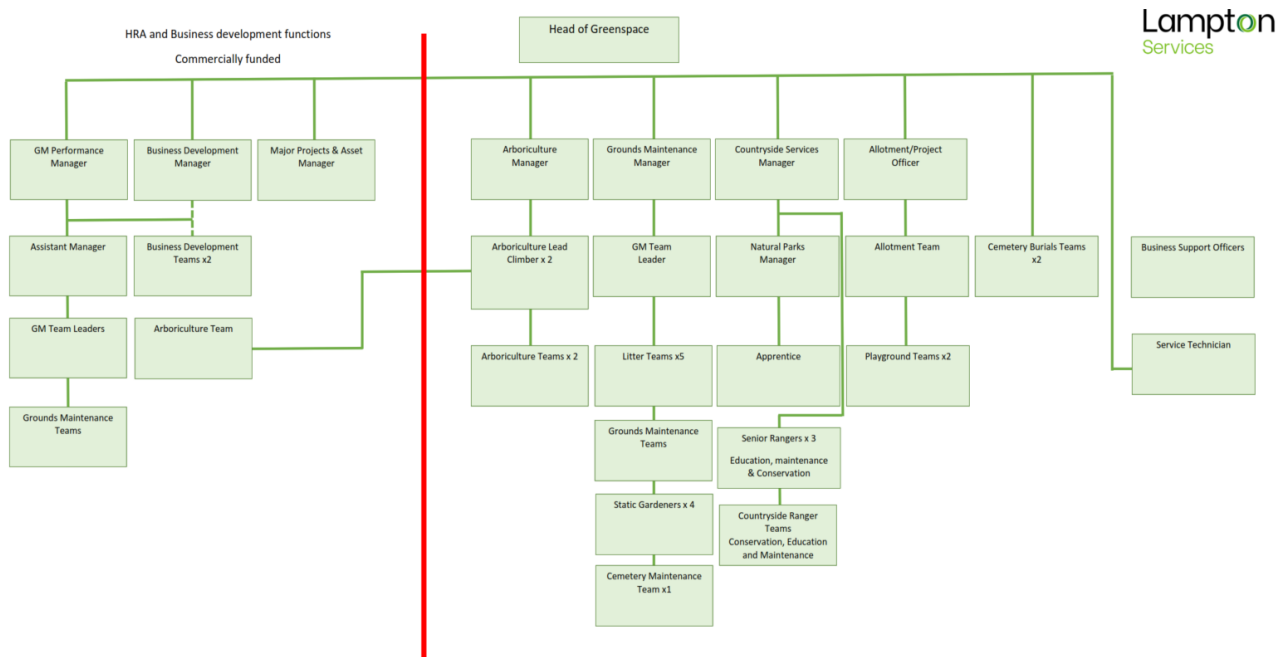
### Ecologist and Nature Recovery Manager

Responsible for providing expert ecological advice relating to the management, protection and enhancement of important habitats and species within the borough.



## Lampton Services Greenspace Management Structure

The following GS roles are responsible for the management of Hounslow's parks and open spaces:



### Head of Service

Responsible for the ground's maintenance service provision. Oversees the delivery of the specification which includes infrastructure.

### Projects Manager including the Allotment Service

Responsible for the development of park infrastructure, management of the allotment service, overseeing horticultural standards, schemes, and developments. Main contact for contractors (CDM). Friends and Member liaison.

### Countryside Manager

Responsible for the management of the borough's countryside service. This role includes the management of the Ranger team and educational, animal husbandry, environmental and wildlife operations/programs associated with these locations.

### Planned Maintenance Manager

Responsible for the management of the operational resources to deliver the ground maintenance services for the parks and open spaces sites.

### Performance and Support Officer

Customer Service functions- Freedom of Information (FOI), customer enquiries, councillors' enquiries, and monthly statistics; technical project support.

### Tree Team Manager

Responsible for the teams that carry out the inspections and maintenance of the boroughs 85,000 park trees. Oversees all tree planting schemes for the council and community groups in parks. Managing and mapping/recording of invasive species. Planning application guidance to LBH.







#### Playground Inspectors x2

Visual, operational, and minor repairs of playgrounds. Inspected annually external contractor.

#### Operational Teams

Grounds maintenance at Boston Manor Park are delivered using mobile teams. These teams provide the

Grass cutting, horticultural tasks, general maintenance, litter bin emptying and litter picking.

#### Business Support Officer

Provides administration for fleet, handles finances and overtime schedules.

#### Natural Park Manager- Boston Manor Park

Site management and delivery of the horticultural, conservation grounds maintenance, volunteering program and delivery of the Activity Plan set out by the Heritage Lottery Fund as part of the Restoring BMP project. Supervises the Learning and Volunteer Coordinator and the Apprentice.



# Appendix 4

## Events Overview: 2023 and excerpts from 2024

### 2023 overview

#### Weekly, weekend conservation/ horticulture volunteering sessions

Tasks around park, woodland, meadow, lake, and wetlands include fruit and veg growing, planting, pruning, weeding, mulching, habitat management and creation. Volunteers receive instruction and training on what they are doing, how to do it and why, e.g., summer pruning the fruit espaliers, identifying weeds, how to compost etc.

There is a regular session on Tuesday mornings, approx. 70+ unique volunteers have attended these, some will come for a few sessions e.g., in between jobs, and many are long-term volunteers, regularly attending sessions. Weekend sessions tend to attract more one-off or irregular volunteers who can't attend our weekday sessions. The Green S Welfare Force often come to our weekend sessions. They are an Indian culture group whose ethos is aimed at improving their environment, carrying out tree planting, litter picking and a wide range of 'clean and green' activities to benefit their local community and neighbourhood.

The Wednesday evening session is aimed at older people, diverse communities and those working in day – activities are gentle (e.g., raised beds where bending not required, and access is easy) and focused on learning how to grow vegetables and working in the Walled Garden. Regular attendees include members from the West London Ghanaian Association.

**Youth volunteer sessions** and **corporate volunteers** also carry out a wide range of horticulture and conservation tasks. Often these are project orientated rather than ongoing maintenance, so that they can achieve a specific goal. Sky has been a successful corporate collaboration with booking multiple days and contributing £4,500 towards projects.

The youth vols are often referred to us to complete Duke of Edinburgh volunteering hours. We ensure that their hours are fun as well as educational, including litter picking by canoe, building hedgehog hibernacula, and creating safety barriers on the pond platform. Some teens also do work experience, working on events, helping in the cafe and at Boston Manor House too. Scouts groups also book visits, combining educational and conservation activities with guided walks in the park.





### School visits and SEND sessions

Tash has developed 14 different workshops for outdoor education activities, making use of all the Park's facilities and habitats. Workshops are all approx. 1.5hrs long and cost £2.50 per pupil. They cover a wide range of subjects from learning about different elements of the ecosystem, to crafts, physical activity, survival skills, healthy eating, resilience, mindfulness and more.

The SEND programme allows schools /groups to pick up to 3 educational activities (see programme) (15 minutes each) during their park visit (approx. 1hr 15mins per session, £5 per child). Each session has a central theme with opportunities to engage and participate in 'hands on' learning tasks and experiences. Tash has developed accessible learning and activity resources to support whole group inclusion and participation with activities designed to complement current Education and Health Care Plan (EHCP) areas of focus (Communication & Interaction; Sensory & Physical; Cognition & Learning; Social, Emotional & Mental Health). In addition, we also have a 16+ Work Experience Programme focusing on skill building to support employability prospects and community involvement. The SEND open day in Sept gave an opportunity for SEND schools and facilitators for the borough to visit the park and see what we have on offer, sampling some activities and guided tour on the day.



School visits make use of the classroom and the grounds – here they are learning about trees; SEND pupils doing some conservation and crafting activities e.g. lavender bag making



## Nature in the park

### Bird Walk and Survey

This is a monthly walk usually led by an expert volunteer. We record the number of each species of bird seen and heard. In 2023 to date, we have recorded 52 different species, in 2022 we recorded 51 species. This data is uploaded to Birdtrack a national monitoring scheme.

**Bat walks** take place regularly from April to October. We do an introductory talk on the lifecycle and importance of bats (we even have a dead bat on license to use as part of the talk), then use bat detectors to look for bats in the park. These are immensely popular events! We often see Common and Soprano pipistrelles and Noctule bats and have recorded Daubenton bats last year.

**Moth show and tell events; Pond dipping; hedgehog talks; nature walks; tree walks, Earthwalks:** finding out what animals live in and visit the park, discovering different habitats, often combined with an activity relating to the event, from hibernacula building, poetry writing, to scavenger hunts. Some events are aimed specifically for children, with others aimed at older children and adults.



### Physical activity

We have delivered a wide range of physical activities at BMP, from Bootcamp (adults) and Outdoor fitness fun (seniors) to multi-sport (age 6-12), orienteering, activity trails, litter picking and canoeing (adults and children). We are delighted that the Outdoor fitness fun sessions have been well received and attended by seniors, the intended target audience. Some 'educational' activities will also have physical elements, for example forest school and other physical challenges.

### Forest school inspired activities and woodland adventure play

These activities can cover a range of topics from learning about the environment to creative and physical challenges and experiences that help children (and their carers) connect to nature. Activities and sessions can be adapted for different ages, e.g., Toddler Woodland adventure play to holiday clubs for 6-12yrs. We have a forest school site in the woodland and are developing a new site near the Manor so that we can continue to deliver activities when Junction 2 is on site preventing use of the primary site.

### Creativity

Many of our activities include creative elements inspired by and using the environment around us. Some activities are directly creative e.g., mosaic making, while others include creative elements within a wider theme, for example the Earthwalks - a nature-inspired walk that connects people to their environment by having them do several activities e.g., poetry writing, natural art etc. We are continuing to develop more activities including a photography workshop coming this winter.

### Heritage in the Park

Many of our guided walks will include references to the park and House's history. Whenever we do a tree walk (adults) or session (children) for example we will always mention the Cedar of Lebanon tree, planted by Sir James Clitheroe in 1754 and our 18<sup>th</sup> century veteran trees. Some talks are more heritage focused, including the Introduction to the Walled Garden (a tour led by Vanessa explaining the history of the Walled Garden and its evolution and development to the current day's planting design and plans. How heritage, sensory journey and biodiversity are reflected in the current design) and on guided tours for groups (West London Ramblers and Walk with V groups for example.) Our self-guided activity trails also include heritage features and facts.





### Nature Festival 2023

June 2023 saw our first Nature Festival at Boston Manor Park, which also acted as a launch event for the completion of the restoration work and the opening of the Potting Shed café at the Hub. We were delighted that so many people attended (approx. 1800) and enjoyed the event and we will be repeating this event each year.

The festival had lots of different stalls from local 'green' organisations and nature-themed stall holders who could promote their services / information and or sell their wares. We also had a petting zoo, free forest school and creative activities, along with some mini talks and tours too.







## Snapshot of Events at BMP 2024 (July, Aug, and Sept)

### July 2024: Boston Manor Park KPIs and brief report

#### Volunteering KPI

Total participants: 104 adults, 13 children (includes teens) = 117 participants

Total hrs: 320.5hrs

#### Education KPI

49 adults, 300 children (includes teens) = 349 participants

Total no. events (excludes 'self-led' events): 36 (of which 24 were education events)

#### Events

##### **Weekly community walks**

Every Friday, social walk around the park led by volunteers

2 adult vols each week, 1hr per walk x4

2 adults, 8hrs

**Regular Fridays: Let's Go Southall Cycling group** have a self-led visit to the park. Approx. 10 adults per week. Gaining confidence in cycling, encouraging inclusive cycling for all Southall residents.

**Regular Tuesdays: Dementia Care walk** – a self-led visit to the park. Approx 15 adults per week. Social inclusion, experiencing the natural environment.

##### **Weekly and weekend conservation/ horticulture volunteering sessions x5**

The Tues and Sat horticulture and conservation tasks take place all around the park, woodland, meadow, lake, and wetlands include fruit and veg growing, planting, pruning, weeding, mulching etc.

**Tuesday** 2 (11x2.5), 9 (9x2.5), 16 (6x2.5), 23 (8a 3cx2.5), 30 (8a 3cx2.5)

42 adults 6 children (youth vols), 120hrs

##### **Weekly veg growing volunteering sessions x4**

**Thurs** 4, 11, 18, 25 (1a 1c, 2a, 1a, 2a 1c)

5 adults, 2 child (youth vols) 10.5hrs

##### **Youth Volunteering sessions**

14–18-year-olds volunteers. Most are participating in Duke of Edinburgh Award. Undertaking conservation, horticulture, and other volunteering at BMP, including helping out at events and BMP café.

Gardening and conservation volunteering on weekdays recorded above.

Work experience (5 days) – referred by SPARKs charity supporting young people at risk of exclusion. They help out with workshops, horticulture, working in cafe – 1 youth vol, 25hrs

Sat 6 Jul – conservation tasks making dead hedge by meadow. 2 youth vols, 4hrs

Mon 15 Jul – work experience and conservation tasks with 1 youth vol 6hrs

Wed 17 Jul – conservation task building artificial planting bank with 1 youth vol 2.5hrs





### **Tues 2, 9, 16, 23, 30 June – Outdoor Fitness Fun x5**

Low impact exercise class aimed for older members of our community and a SEND group also come regularly. £3 pp. (12, 9, 8, 9, 3)

41 adults

### **SEND sessions**

**Great Oaks SEND College** SEND Young adults 18-24yrs take part in volunteer conservation and horticulture activities around the park.

Fri 12 July, 5 adults (x1.5hrs) 7.5hrs

**Sybil Edgar SEND school** Mon 1 July, 5 youth

### **Sat 6 June - Bird Walk and survey**

Rained all walk, so not a lot recorded. 16 species, see [here](#) for full list. 1 adult

### **Friday 5 July – Sky corporate volunteering**

Made a new hibernacula (refuge area for toads, frogs, newts, and hedgehogs) in the Service Yard, pruning hedges, potting up, weeding, and mulching

12 adults, 60hrs

### **9, 10, 11 July – Marlborough Primary School x6 sessions**

Resilience workshops and Naturally Crafty workshops for 3 different year classes.

128 children

### **Mon 15 July – Meadow and woodland sweep for hedgehogs**

A careful sweep with volunteers through the meadow sections closest to the woodland strips where we have found hedgehogs to ensure any are removed before the meadow is cut prior for J2. We also searched through the woodland strips where some vegetation removal will take place to ensure that no active nests containing live hedgehogs would be harmed by this work. No hedgehogs found, but saw at least 3 nests, confirming their continued presence on site.

35 adult vols 70hrs

### **Mon 15 July – Oaklands Primary - Let's get physical workshops x2 sessions**

60 children

**Tues 16 July – Berkeley SEND Early Years** Nature workshop specifically designed for SEND early years children.

30 children

**Tues 16 July – Tour of the Walled Garden** Introducing the history of the walled garden back to the 18C, how it has evolved and what is planted now and why.

7 adults



**Wed 17 July – Oaklands Primary - Resilience workshops x2 sessions**

60 children

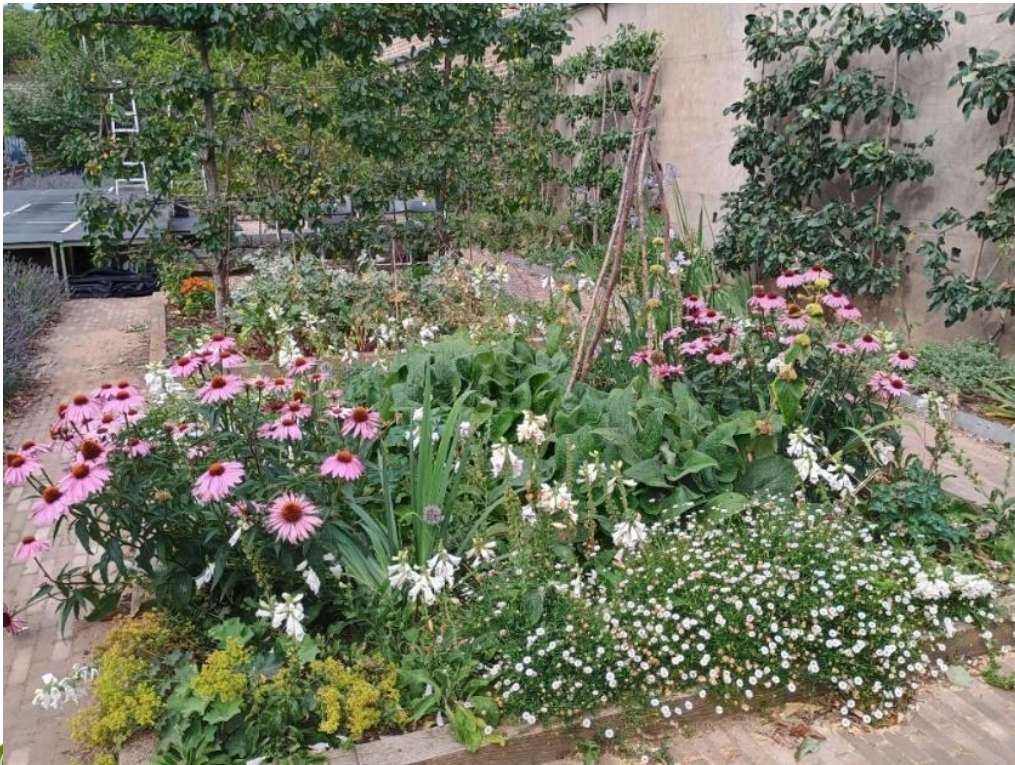
**Thurs 18 July – moth survey** using light trap set overnight: 1 adult vol 1hr

**Thurs 18 July – St Mark's Primary SEND group session** – den building, crafts, assault course

4 children

Other:

- Continual liaison for preparations for Junction 2 festival. Site walkabouts and monitoring checks (pre, during and post event), wildlife and environmental protection checks, protection of buildings i.e. hoardings around gate in place. Site induction, meetings, comms, security.
- Butterfly and moth surveys, along with usual bird survey
- Setting up new partnership with Ealing Hedgehog Friends to raise awareness of wildlife on site and how to manage people and their habitats. Posters, protected areas, and noticeboard with monthly updates. Rescues and meeting 2 vols 6hrs
- Update meeting with HLF
- HLF project evaluation meetings with consultants and visitor and vol survey preparations
- Fish Pass design tenders' evaluation
- Improved wildlife access with making ramps less steep in the lake and built artificial planting banks with volunteers
- Working with Arts Centre for their production of Midsummer Night's Dream in the Walled Garden







35 volunteers helped to thoroughly search the meadow (before it was cut for Junction 2 music festival) and the adjacent woodland strip to check for hedgehogs to remove them from potentially being harmed by vegetation clearance required as part of setting up J2. Nests found but no hedgehogs on this occasion, although we do know they are on site – hoglets were rescued (after dog attack) just the week before – bottom right

MORE PHOTOS next page



Sky volunteers built a new hibernaculum in the Service Yard where we have previously found toads frogs and newts. Now they have somewhere permanent for them to safely shelter year round.

MORE PHOTOS next page



## Aug 2024: Boston Manor Park KPIs and brief report

### **Volunteering KPI**

Total participants: 71 adults, 16 children (youth vols) = 87 participants

Total hrs.: 241hrs

### **Education KPI**

180 adults, 240 children (includes teens) = 420 participants

Total no. events (excludes 'self-led' events): 36 (of which 30 were education events)

### **Events**

#### **Weekly community walks**

Every Friday, social walk around the park led by volunteers

2 adult vols each week, 1hr per walk x4

2 adults, 8hrs



Try the BMP Audio trail  
using this QR code

**Regular Fridays: Let's Go Southall Cycling group** have a self-led visit to the park. Approx. 10 adults per week. Gaining confidence in cycling, encouraging inclusive cycling for all Southall residents.

**Regular Tuesdays: Dementia Care walk** – a self-led visit to the park. Approx 15 adults per week. Social inclusion, experiencing the natural environment.

#### **Weekly and weekend conservation/ horticulture volunteering sessions x4**

The Tues and Sat horticulture and conservation tasks take place all around the park, woodland, meadow, lake, and wetlands include fruit and veg growing, planting, pruning, weeding, mulching etc.

**Tuesday** 6 (9a 1cx2.5), 13 (8a 3cx2.5), 20 (8a 2cx2.5), 27 (7a 4cx2.5)

32 adults 10 children (youth vols), 105hrs

#### **Weekly veg growing volunteering sessions x5**

**Thurs** 1, 8, 15, 22, 29 (3a 1c, 2a 1c, 1a 1c, 1a 1c, 1c)

7 adults, 5 children (youth vols) 18hrs

#### **Youth Volunteering sessions**

14–18-year-olds volunteers. Most are participating in Duke of Edinburgh Award. Undertaking conservation, horticulture, and other volunteering at BMP, including helping out at events and BMP café.

Gardening and conservation volunteering on weekdays recorded above.

1 youth vol helping with events 4hrs

#### **Tues 20, 27 Aug – Outdoor Fitness Fun x2**

Gentle impact exercise class aimed for older members of our community and a SEND group also come regularly. £3 pp. (8, 7)

15 adults

#### **Sat 3 Aug - Bird Walk and survey**

29 species, including Mandarin duck, coal tit and kestrel. See [here](#) for full list. 5 adults (incl. 1 lead vol), 1c



**Mon 5 Aug – Pond dipping**

15 adults 28 children

**Tues 6 & 20 Aug – Multi sport with Brentford Football Community Sports Trust x2 sessions**

(10, 5) 15 children

**Tues 6 & 20 Aug – Tour of the Walled Garden for Westway Community Transport (elderly group) x2 sessions**

8 adults

**Wed 7 Aug – paddleboarding with Active 360**

17 adults 14 children

**Sat 10 Aug – pond dipping**

15 adults 30 children

**Sat 10 Aug – Sneaky stone painting**

15 adults 40 children

**Tues 13 Aug – Moth survey** – 65 species recorded including Jersey Tiger moth and rare Sallow Kitten

1 adult vol, 3hrs

**Thurs 15 Aug – Bat walk** – using detectors to ID species with an intro talk on their lifecycle, habitats, and behaviour. Soprano pip x5

30 adults 20 children

**13-15 Aug - Basketball coaching with SUPA (local club) x3 sessions**

(11, 8, 12) 31 children

**20-22 Aug Summer Holiday Club with Tash x3 sessions**

A mix of wildlife discovery, physical activity, forest school and creative activities

15 children

**20-22 Aug – Laughter Yoga taster x3 sessions**

10 adults

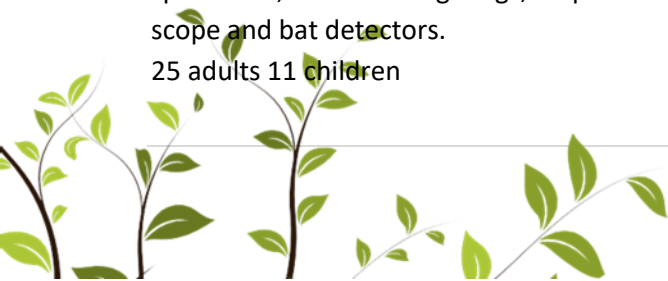
**20-22 Aug – Yoga with kids x3 sessions**

18 adults 20 children

**Wed 21 Aug – Nature Night Walk**

A walk from dusk to dark to explore our nocturnal wildlife. Looking at live newts and a range of dead specimens, talks on hedgehogs, amphibians, bats, and walks looking at their habitats using night vision scope and bat detectors.

25 adults 11 children







#### **Thurs 22 Aug - Sky corporate volunteering**

Potting up plants, turning compost bays, trimming back paths along woodland paths.

17 adults, 85hrs

#### **Thurs 29 Aug – Sky corporate volunteering**

Clearing weeds from Boston Manor House long border, around House and terrace.

11 adults 16.5hrs

#### **Other:**

- Continual liaison re. Junction 2 festival. Site walkabouts and monitoring checks (pre, during and post event), handover and remediation monitoring and walkabout. Quote gathering for remediation and environmental improvement fund works.
- Brent Catchment Partnership meeting
- Created new wildlife trail and Audio trail
- Comms – VH wrote wildlife of Boston Manor Park article –published in Ealing Wildlife Group’s newsletter and online: **Check out [this article](#) in Ealing Wildlife Group newsletter about Boston Manor Park!**
- Planned next programme of activities & new events Newsletter for Sept and Oct sent out
- HLF project evaluation meetings with consultants and visitor and vol survey preparations
- Working with Arts Centre/ Potting Shed for their production of Midsummer Night’s Dream and the Beer Festival in the Walled Garden
- Café and Hub building management and liaison re. defects, maintenance, events, hires and monitoring systems.
- Facilitated events and meetings with both internal (Friends, tennis club, Potting Shed) and external stakeholders at the Hub.
- Promotion of events and activities via council and other comms and social media. Including promotion of **Love Parks Week**







## Sept 2024: Boston Manor Park KPIs and brief report

### **Volunteering KPI**

Total participants: 91 adults, 4 children (youth vols) = 95 participants

Total hrs: 296hrs

### **Education KPI**

171 adults, 45 children (includes teens) = 216 participants

Total no. events (excludes 'self-led' events): 30 (of which 19 were education events)

### **Events**

#### **Weekly community walks**

Every Friday, social walk around the park led by volunteers

2 adult vols each week, 1hr per walk x4

2 adults, 8hrs

#### **Monthly community walks – park to park (BMP to Osterley)**

A monthly walk (started in Feb 2024) led by BMH vols starting at BMP and ending at Osterley Park. The full year's count for 2024 of vol hours will be recorded here: 22 vols, 44hrs

Participation nos. will be recorded in BMH Activity Plan so are not duplicated here.

**Regular Fridays: Let's Go Southall Cycling group** have a self-led visit to the park. Approx. 10 adults per week. Gaining confidence in cycling, encouraging inclusive cycling for all Southall residents.

**Regular Tuesdays: Dementia Care walk** – a self-led visit to the park. Approx 15 adults per week. Social inclusion, experiencing the natural environment.

#### **Weekly and weekend conservation/ horticulture volunteering sessions x4**

The Tues and Sat horticulture and conservation tasks take place all around the park, woodland, meadow, lake, and wetlands include fruit and veg growing, planting, pruning, weeding, mulching etc.

**Tuesday** 3 (8x2.5), 10 (5x2.5), 17 (8x2.5), 24 (11x2.5) **Thurs 26 Sept** Carole volunteering, working around lake to clear invasive weeds by ramp and in grassy areas, mulching, planting yellow flag iris

33 adults, 85hrs

#### **Youth Volunteering sessions**

14–18-year-olds volunteers. Most are participating in Duke of Edinburgh Award. Undertaking conservation, horticulture, and other volunteering at BMP, including helping out at events and BMP café.

Sat 21 Sept – Clearing Robinia from woodland. Litter pick in forest school area

4 youth vols, 8hrs

#### **Tues 3, 10, 17, 24 Sept – Outdoor Fitness Fun x4**

Gentle impact exercise class aimed for older members of our community and a SEND group also come regularly. £3 pp. (8, 10, 8, 11)

37 adults

**Sat 7 Sept - Bird Walk and survey**

25 species, including Mandarin duck, grey wagtail and 4 Great Spotted Woodpeckers. See [here](#) for full list. 8 adults (incl. 1 lead vol, 1.5hrs)

**Tues 3, 10, 17 Sept Trinjan Indian Dancing x3**

Run by an Indian women's social and community group this dancing session is suitable for all ages and abilities and combines fun routines to music using musical instruments, voice, rhythm, and dance. (16, 16, 15)

47 adults (participants include senior citizens and SEND adults and adults of wide-ranging ethnic diversity)

**Sat 7 Sept - London Park to Park walk**

Led by the [London Park to Park – Get to know London by walking its parks](#) group, this walk started at Walpole Park in Ealing and ended at Boston Manor Park.

13 adults, including 1 lead vol, 3hrs

**Wed 11, 18, 25 Sept - Iyengar Yoga x3**

With local teacher Kasia Dmytrasz, this is a Hatha-based yoga class focussed on stretches and progressive postures, suitable for everyone, whatever ability, age, body shape or level of flexibility. Practice helps you to relax and energizes the body and mind, bringing vitality, flexibility, strength, concentration, self-confidence, and mental calm. Iyengar yoga can help you overcome and prevent many stresses, strains, aches, and pains as well as promoting firm foundation for health and well-being. (3,5,8a 1c)

16 adults, 1 child

**Thurs 12 Sept – Big River Watch Survey**

A national survey run by the River's Trust to record the health of our rivers, includes recording water quality, outfall monitoring, vegetation in and next to river and wildlife species.

4 adults (includes 2 vols, 1.5hrs)

**14, 15 & 21, 22 Sept - Ealing BEAT – 4 days**

As part of the Ealing BEAT art trail, the Ealing Art Group displayed 8 artists in the Service Yard workshop and buildings. Paintings are for sale and for the public to enjoy.

Approx 400 visitors (will be recorded as adult)

**Mon 16 Sept - Sky corporate volunteering**

Trimming back bramble from paths along woodland paths, clearing invasive weeds in wet woodland. Preparing beds along one side of the Walled Garden for new planting, digging in compost, potting up, pruned pleached Lime trees.

18 adults, 90hrs

**Tues 17 Sept – Moth survey – 15 species recorded – temperature went down to 9 degrees at night.**

1 adult vol, 2hrs



**Tues 17 Sept – Forest Bathing**

An immersive walk through the woodland using the senses and guided actions and mediations to connect with nature and the environment.

3 adults, plus 1 lead volunteer, 3hrs

**Thurs 19 Sept - Sky corporate volunteering**

Creating a new hedgehog enclosure that allows hedgehogs in, but not dogs, and building 2 new hibernacula (hibernation homes). Clearing Robinia suckers from the woodland strip between the M4 and playing field.

10 adults, 50 hrs

**Sat 21 Sept – Bat walk** – using detectors to ID species with an intro talk on their lifecycle, habitats, and behaviour. A very successful last bat walk of the year! Soprano pip x5

20 adults 30 children

**Sunday 22 Sept – Feral Voices workshop**

A unique outside experience to harmonise and have a mindful, sonic experience through the power of unified voices all in the beautiful woodland setting at Boston Manor Park. Learning simple songs with 3- or 4-part harmonies and rounds with a nature-based theme. All songs are taught acapella with no sheet music, simply following the sounds and harmonies to find where our voices can uplift your heart, mind, and spirit. No singing experience or skill necessary.

15 adults

**Monday 23 Sept - Family Lives meeting and walk**

A guided walk around the park for the group after their catch-up meeting.

8 adults

**Thurs 26 Sept – Edward Bentham SEND group**

Guided nature-based activities suitable for SEND groups that use physical activity, the senses, exploring nature and creativity.

10 children

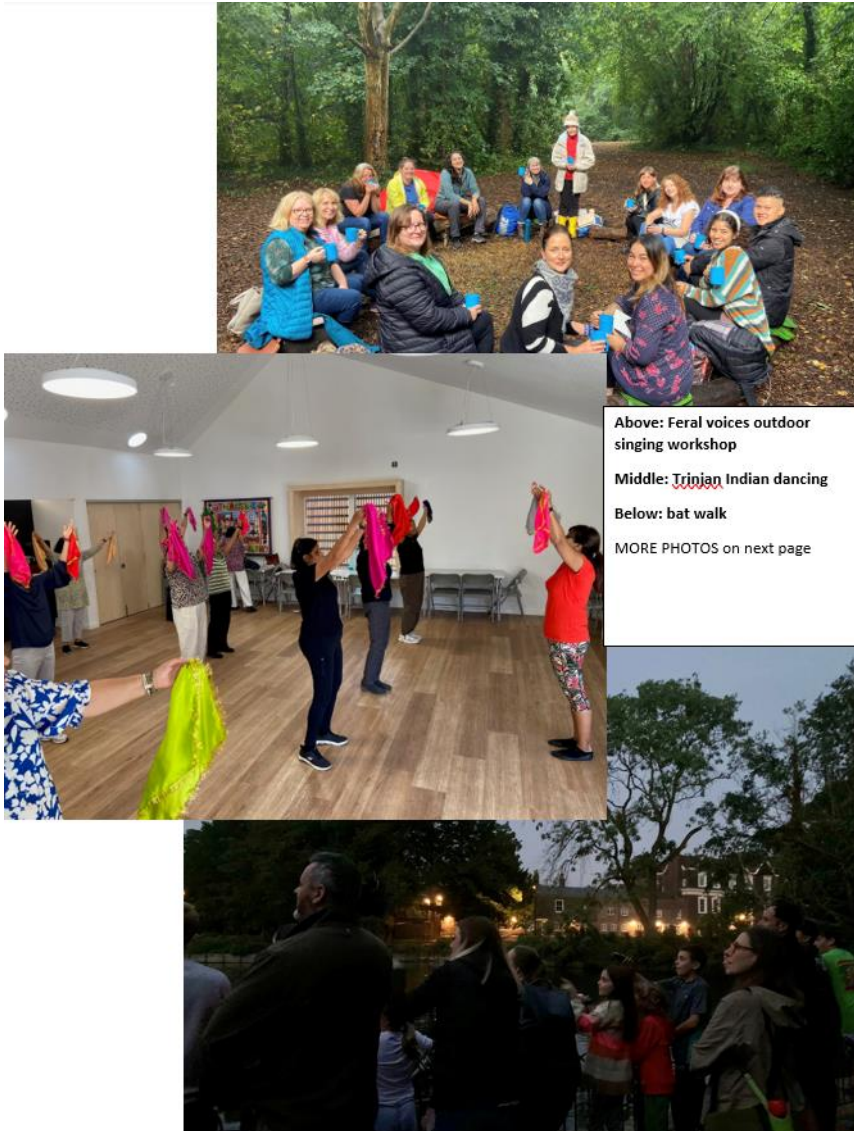
**Other:**

- Site meetings and getting quotes for re. Junction 2 festival remediation and environmental improvement works. Specialist advice from EA sought for riverbank erosion from pontoon work.
- Planned next programme of activities for Nov and Dec
- HLF project evaluation meetings with consultants and visitor, vol and education participation survey preparations
- NG attended Outdoor Education conference – led to brainstorming session to produce new ideas for events and activities at BMP





- Progressing partnership with Ealing Hedgehog Friends – as well as activities, put up noticeboard so they can display ‘what hogs are up to now’: a monthly update to let people know what hogs are doing (and also how we can manage our behaviours and dogs to keep them safe), and encourage positive action at home too. Poster designed for woodland areas to inform public of nesting areas and keeping an eye on dog.
- Facilitated set up of Ealing BEAT art exhibition, using workshop and buildings in the Service Yard



# Appendix 5

## Excerpt from Boston Manor Park 10-year MMP (2019, rev. 2024/5) Soft landscaping section – detailing habitat area /vegetation type as referred to in Action Plan



### SOFT LANDSCAPE: MAINTENANCE ACTION PLAN: PRINCIPLES, TARGETS, ACTIONS AND FREQUENCY

#### Type

##### i. ORNAMENTAL GRASS

**Principle:** Intensive [close cut](#) regime for ornamental lawn

**Target:** Maintain a 18mm height and create a [close knit](#) sward, free from perennial weeds with neat edges.

#### Actions

- Follow standard prescriptions for close mown ornamental grass cutting. Cut using a cylinder mower with roller and remove cuttings. Cut weekly in the growing season.
- Carry out seasonal improvement activities including, spot weeding aeration, [scarifying](#) and fertilizing to most intensely used areas.
- Monitor wear and sward composition, especially after hand-over and after intense periods of use, particularly after events. Re turf/seed as appropriate providing temporary notices to advise public of maintenance actions
- Edge paths and edges

#### When

- Three times a month during the growing season from April to October/Nov and 4 additional cuts for occasions/events. Total allowance 28 cuts.
- Spot weed during the growing season from March to October
- Aerate in April if [required](#)
- Light [scarify](#) in April if required
- Heavy scarify in October if [required](#)
- Apply fertilizer in April July and September
- Monthly and after events

#### Resources

Lampton  
[GreenSpace](#)

Lampton  
[GreenSpace](#)

Lampton  
[GreenSpace](#)

##### ii. AMENITY GRASS

**Principle:** Intensive [close cut](#) regime for amenity lawn

**Target:** Maintain a 25- 30mm height and create a [close knit](#) sward, free from perennial weeds with neat edges.

- Follow standard prescriptions for close mown amenity grass cutting. Cut using a cylinder mower and leave cutting to mulch.
- Leave uncut sections (see [map](#) – NPM to provide) during No Mow May – June, with signage to explain why to public and benefits for [wildlife](#)
- Carry out seasonal improvement activities including, spot weeding aeration, [scarifying](#) and fertilizing to most intensely used areas.
- Monitor wear and sward composition, especially after hand-over and after intense periods of use, particularly after events. Re turf/seed as appropriate providing temporary notices to advise public of maintenance actions
- Edge paths and edges.

- Cut every three weeks during the growing season from April to October Nov and additional cuts for occasions/ events as required.
- May-June
- Spot weed during the growing season from March to October
- Aerate in April if [required](#)
- Light [scarify](#) in April if required
- Heavy scarify in October if [required](#)
- Apply fertilizer in April July and September

Lampton [GreenSpace](#)

Lampton [GreenSpace](#)

- Monthly and after events
- Monthly





## SOFT LANDSCAPE: MAINTENANCE ACTION PLAN: PRINCIPLES, TARGETS, ACTIONS AND FREQUENCY

### Type

#### iii. GRASSLAND MEADOW

Principle: Achieve areas of long grass and wildflower meadows

Target: Allow grass to grow out, achieve maturity and seed before cutting. Maintain free from perennial weeds.

Improve biodiversity of flora

### Actions

- Improve formerly mown grass section with short cut and clear, shallow rotovation and overseeding with spring flowering mix and yellow rattle (see map – NPM to provide).
- Strim/flail cut and remove grass cuttings annually.
- Maintain small sections of scrub next to selected trees to provide food and shelter for wildlife, flailing margins to prevent encroachment as required
- Carry out seasonal improvement activities including, spot weeding, over-seeding and plug planting

### When

- Renovation of formerly mown grass section to be carried out in autumn.
- After the first season cut once as a Summer Hay cut to co-ordinate with Junction 2 event and then again in the Autumn (or subject to specified meadow mix) leaving uncut sections (to provide areas for insects to overwinter, birds to feed on seed heads and shelter for small mammals) in rotation as per map – NPM to provide)
- Spot weed /hand pull thistles and docks during the growing season from March to October
- Planting plug wildflowers autumn/spring

### Resources

Lampton Greenspace / specialist contractor

#### iv. SPORTS PITCHES

Principle: Intensive close cut regime for football use

Target: Maintain a 30mm height and create a close knit sward, free from perennial weeds

- Follow standard prescriptions for close mown amenity football pitches. Cut using a cylinder gang mower and leave cutting to mulch.
- Carry out seasonal improvement activities including, spot weeding aeration, scarifying and fertilizing to most intensely used areas.
- Monitor wear and sward composition, especially after hand-over and after intense periods of use, particularly after events. Re turf/seed as appropriate providing temporary notices to advise public of maintenance actions

- Cut every three weeks in the growing season. from March to October
- Spot weed during the growing season from March to October
- Aerate in April if required
- Light scarify in April if required
- Heavy scarify in October if required
- Apply fertilizer in April July and September
- Monthly and after events

Spartans YFC/ Lampton Greenspace

Spartans YFC


Spartans YFC/ Lampton Greenspace





## SOFT LANDSCAPE: MAINTENANCE ACTION PLAN: PRINCIPLES, TARGETS, ACTIONS AND FREQUENCY

Type	Actions	When	Resources
<b>v. SHRUBS AND GROUNDCOVERS</b> <u>Principle:</u> Seasonal regime to maintain all <u>year round</u> shape and form with long seasonal floriferous displays. For newly planted shrubs facilitate establishment. <u>Target:</u> Beds to be substantially weed free from handover with cover in planted beds by year 2. On-going weeding and clearing with volunteer support. Annual re-stocking as required.	<ul style="list-style-type: none"> <li>• Maintain shrubs mainly for architectural form.</li> <li>• Prune based on general good practice in accordance with species and to the RHS Pruning Groups guide.</li> <li>• Monitor for pests and disease.</li> <li>• Weed borders to maintain predominantly weed free.</li> <li>• Top up beds with mulch annually.</li> <li>• Assist and facilitate the <u>organisation</u> of volunteer days.</li> </ul>	<ul style="list-style-type: none"> <li>• Prune shrubs in accordance with species, flowering <u>season</u> and accordance with RHS Pruning Guide. Early Flower Evergreen Shrubs (Group 8): Immediately after flowering. Late Flowering Evergreen Shrubs (Group 9): Mid to late spring. Deciduous shrubs: Shape and remove dead wood in early spring and prune again immediately after flowering.</li> <li>• Monitor shrubs for pests and disease monthly.</li> <li>• Weed borders using hand tools every four weeks during the growing season.</li> <li>• Top up mulch annually to maintain a depth of 75mm.</li> </ul>	Lampton <del>GreenSpace</del> NPM/Volunteers
<b>vi. HERBACEOUS PERENNIALS</b> <u>Principle:</u> Seasonal regime to attain long seasonal floriferous displays. For newly planted herbaceous perennials facilitate establishment. <u>Target:</u> Beds to be substantially weed free from handover with cover in planted beds by year 2. On-going weeding and clearing with volunteer support. Annual re-stocking as <u>required</u> .	<ul style="list-style-type: none"> <li>• Maintain herbaceous stock for flowering longevity.</li> <li>• Carry out seasonal tasks including deadheading, tying in and applying support canes.</li> <li>• Monitor for pests and <u>disease</u></li> <li>• Assist and facilitate the <u>organisation</u> of volunteer days.</li> <li>• Weed borders to maintain predominantly weed free.</li> <li>• Top up beds with mulch annually.</li> </ul>	<ul style="list-style-type: none"> <li>• Deadhead plants after flowering.</li> <li>• Shear back dead material of plants (e.g. flowered stems or foliage dying off) around October/ November or if attractive form/seed heads, leave overwinter and cut back dead material Feb/March</li> <li>• Prune lavender blocks in walled garden to maintain compact form after flowering (Sept/Oct)</li> <li>• Prune lavender low hedges in Long Borders to maintain compact form after flowering (Sept/Oct)</li> <li>• Monitor herbaceous perennials for pests and disease monthly.</li> <li>• Weed borders using hand tools every four weeks during the growing season.</li> <li>• Top up mulch annually (autumn) to maintain a depth of <u>75mm</u></li> </ul>	Lampton <del>GreenSpace</del> NPM/ volunteers



Type	Actions	When	Resources
<b>vii. EXISTING MATURE TREES / VETERAN TREES</b> <u>Principle:</u> <u>Manage park</u> tree stock to provide structure, maturity and specimen accent. <u>Target:</u> Maintain existing trees in a healthy condition and to their natural form and habit <u>u</u>	<ul style="list-style-type: none"> <li>Carry out an annual tree inspection to monitor general condition and <del>vigour</del>. Make recommendations for pruning, crown thinning, crown lifting and removal of dead wood. Remove dead or dying trees for safety reasons.</li> <li>Maintain buffer of brushwood as dead hedges around veteran trees</li> </ul>	<ul style="list-style-type: none"> <li>During the dormant season from November to February.</li> <li>As <u>required</u></li> </ul>	<p>Greenspace</p> <p>NPM/Volunteers</p>
<b>viii. NEW TREES (GENERALLY)</b> <u>Principle:</u> Facilitate the establishment of trees planted during the capital works <del>programme</del> . <u>Target:</u> Healthy growing trees of good natural form and habit.	<ul style="list-style-type: none"> <li>Monitor newly planted trees for general health and <del>vigour</del>, including for pests and diseases.</li> <li>Plant standards and tree whips to improve biodiversity in woodland, wet woodland and Clitheroe Is</li> <li>Water during periods of drought</li> <li>Check stakes, ties, webbing and underground guying for general condition and appropriate tightness. Ensure trees are straight.</li> <li>Maintain minimum 1m diameter weed free circles around trees in grass.</li> <li>Carry out seasonal activities including, formative pruning, <u>fertilizing</u> and mulching. Carry out pruning works in accordance with the RHS Pruning Guide.</li> <li>Replace dead or dying trees as appropriate after the end of the defects period with trees of matching species and maturity.</li> </ul>	<ul style="list-style-type: none"> <li>Monitor trees monthly and more frequently during periods of drought.</li> <li>Winter</li> <li>Water trees during periods of drought particularly in July and August.</li> <li>Check stakes, ties, underground <u>guys</u> and other fixings monthly.</li> <li>Maintain weed free circles to trees to prevent competition for nutrients and water.</li> <li>Carry out formative and minor pruning during the dormant season from November to February. Apply fertilizer during the first three years of establishment in late April or early May. Pleached lime trees in walled garden will require ongoing shape maintenance every 2-3 <u>years</u></li> <li>Top up mulch annually to maintain a depth of 75mm.</li> </ul>	<p>Lampton <del>GreenSpace</del> / NPM/Volunteers</p>
<b>x. WOODLAND</b> <u>Principle:</u> <u>Manage park</u> woodland for improved biodiversity. <u>Target:</u> To improve structural diversity and tree longevity. Increase biodiversity, habitat creation and amenity value. control of invasive non-native plants	<ul style="list-style-type: none"> <li>Coppice sections in rotation at low level. Cut using sharp tools. Cut at angle to shed water.</li> <li>Monitoring and treatment of Giant Hogweed</li> <li>Planting of woodland bulbs to improve flora <u>diversity</u></li> <li>Create log piles, hibernacula, <del>stagbeetle loggeries</del>, dead hedges and hedgehog <u>enclosures</u></li> <li>Plant native tree whips to enhance <u>biodiversity</u></li> </ul>	<ul style="list-style-type: none"> <li>Coppice sections on a minimum <u>5 year</u> rotation and review after 5 years</li> <li>Coppice outside the bird nesting season (March to August)</li> <li>April-May</li> <li>Autumn</li> <li>Year round</li> <li>Winter</li> </ul>	<p><del>GreenSpace</del> tree team/ Volunteers (where coppice size appropriate)</p> <p>specialist contractor NPM/Volunteers</p>
<b>xi. WET WOODLAND (cont. next page)</b>	<ul style="list-style-type: none"> <li>Coppice sections on rotation at low level. Cut using sharp tools and at an angle to shed <u>water</u></li> </ul>	<ul style="list-style-type: none"> <li>Coppice on a minimum <u>5 year</u> rotation and review after 5 years</li> <li>Coppice outside the bird nesting season (March to August)</li> </ul>	<p><del>GreenSpace</del> tree team/ NPM/Volunteers (where coppice size appropriate)</p>

## Type

### (Wet woodland continued)

**Principle:** Maintenance and creation of wet woodland towards the [south west](#) corner of the site and river

Brent

**Target:** Increase biodiversity, habitat creation and amenity value, flood water and carbon storage capacity

## Actions

- Retain dead trees as habitats for [invertebrates](#)
- Carry out annual monitoring surveys to identify changes in plant [species](#)
- If ground flora does not emerge carry out additional planting work with native woodland bulbs and where appropriate (wet) woodland ground flora e.g. marsh marigold, opposite leave golden saxifrage and [meadowsweet](#)
- Create log piles, hibernacula, ~~stagbeetle~~ [stagbeetle logeries](#), dead hedges and hedgehog [enclosures](#)
- Allow the establishment of a deep layer of leaf and plant [matter](#)
- Plant trees suitable for wet woodland (birch & alder)

## When

- Late spring
- Autumn/spring
- Year round
- winter

## Resources

NPM/volunteers

NPM/volunteers

## xii. RIVER BRENT MARGINS

**Principle:** Prevent establishment of invasive [non-native](#) plants. Improved biodiversity and amenity value along river margins with improved aquatic environment for fish and other inverts to live and [breed](#)

**Target:** Keep banks free or substantially under control of invasive non-native plants. River works to prevent and minimize [river bank](#) erosion and create improved breeding grounds for aquatic and riverine wildlife. Works to enable pass of fish and eels upstream. Maintain access path along riverine section adjacent to meadows and [wetlands](#)

- Prevent re-establishment of invasive non-native plants e.g. Giant Hogweed, Japanese Knotweed, and Himalayan Balsam

- Install brash berms, large wood flow deflectors,
- Bank stabilization [work](#)
- Fish and eel pass feasibility study, design and [delivery](#)
- Flail/~~trim~~ access path adjacent to meadows and wetlands approx. 2-3 times per year as [required](#)

- During May before flowering
- [2021/22](#);
- spring 2025
- Ongoing from 2022
- Summer/autumn

Lampton  
Greenspace/sp  
ecialist  
contractor  
Specialist  
contractor

LBH/NPM/Spec  
ialist  
contractor/ EA

## xiii. LAKE

**Principle:** Improved biodiversity and lake with good water quality

**Target:** Prevent algal blooms. Increased aquatic marginal flora and habitat creation for amphibians, [reptiles](#) and inverts. Ramps to enable lake access for birds and small [mammals](#)

- Carry out routine tree [works](#)
- Monitor water quality e.g. algae, nutrient levels and introduce oxygenating plants as [required](#)
- Monitor lake water [elevations](#)
- Discourage the use of bread for feeding duck (education and install signage)
- NPM/vols maintain lakeside vegetation with balance of grassy areas for wildfowl habitat and ruderal/wildflower/shrub/scrub vegetation for enhanced [biodiversity](#)
- Install artificial banks/ floating platforms for aquatic marginal plants and plant aquatic [marginals](#)
- Create log piles, hibernacula, ~~stagbeetle~~ [stagbeetle logeries](#)
- Install wildlife [ramps](#)

- Tree works and testing [annually](#)
- Monitoring monthly
- Ongoing /2024-25
- Ongoing
- 2025
- Ongoing
- Spring 2023

LBH/Lampton  
~~GreenSpace~~ /Specialist  
Contractor

NPM/Specialist contractor

NPM/volunteers





#### xiv. NATIVE HEDGE

Principle: Semi formal clipped native hedge

Target: Maintain at 1.2m for new (playground) hedges, and as 3-5m high and approx. 3m depth for gym/play area (old bowls green)

- Monitor for pests and [disease](#)
- Weed hedge strip to maintain predominantly weed free.
- Top up hedge strip with mulch
- Cut to maintain shape, in general after flowering.
- Annually
- Every 4 weeks in growing season
- Autumn
- As required

Lampton  
~~GreenSpace~~ / NPM/volunteers

#### xv. RAISED VEGETABLE BEDS (Service Yard)

Principle: Establish a working vegetable [garden](#)

Target: Production of a variety of crops for ~~sale and~~ educational purposes and for the volunteers to use

- Carry out seasonal tasks including planting and [harvesting](#)
- Monitor for pests and [disease](#)
- Weed raised beds as [required](#)
- Water during growing season as [required](#)
- Regular volunteer sessions to maintain [beds](#)
- Plan, plant and harvest rotational crops based on best [practice](#)
- Monitor vegetables for pests and disease monthly.
- Weed raised beds using hand tools as [required](#)
- Water as [required](#)
- Weekly during growing season

NPM/  
Volunteers

#### xvi WETLAND SCRAPES MEADOW AND SCRUB

Principle: Manage wetland scrapes and surrounds for improved biodiversity.

Target: Increase biodiversity, habitat creation and amenity value, flood water and carbon storage capacity

- Follow standard prescriptions for establishing and cutting meadow grass. Cut regularly in the first year. After the first year ~~strim~~/flail cut and remove grass cuttings annually.
- Carry out seasonal improvement activities including, spot weeding, over-seeding and plug planting (including introducing [Yellow](#) rattle)
- Maintain sections of scrub around tree ~~copse~~s and riverine margins, flailing back on rotation when required ([see map](#) – NPM to provide)
- Plant bog plants and aquatic marginals, including Phragmites australis, Iris ~~pseudocoris~~ around wetland [scrapes](#)
- Create dead hedge around one wetland scrape to prevent dogs entering water – allowing undisturbed breeding areas for aquatic wildlife to [breed](#)
- Maintain approx. ½-1/3 scrapes' surface free from vegetation (removing reeds and iris as required)
- Create log piles, hibernacula, ~~stag beetle~~ loggeries in scrub and tree ~~copse~~ [areas](#)
- Cut every 2 months March to September in the first season.
- Cut and clear in Autumn (or subject to specified meadow mix) leaving uncut sections (to provide areas for insects to overwinter, birds to feed on seed heads and shelter for small mammals) in rotation as per [map](#) – NPM to provide)
- Spot weed /hand pull thistles and docks during the growing season from March to October
- Planting plug wildflowers, bog plants and aquatic marginals autumn/spring
- Dead hedge building winter/spring
- Reed and Iris removal when required autumn-[spring](#)
- ongoing

Lampton  
Greenspace  
/specialist  
contractors  
  
NPM/volunt  
eers





#### xvii. CLITHEROW ISLAND

Principle: Manage woodland and riverine habitat for improved biodiversity and removal of INNS.

Target: To improve structural diversity and tree longevity. Increase biodiversity, habitat creation and amenity value.

Control of invasive non-native plants

- Monitoring and treatment of Giant Hogweed
- Carry out tree inspections to monitor general condition and ~~vigour~~. Make recommendations for ivy removal, pruning, crown thinning, crown lifting and removal of dead wood. Remove dead or dying trees only for safety reasons.
- Create log piles, hibernacula, ~~stagbeetle loggeries~~, dead hedges
- Increase biodiversity with new tree whip planting – establish mini forest near lock

- April/May
- During the dormant season from November to February.

- Winter
- Winter

Lampton  
~~GreenSpace~~/tree  
team/ Countryside  
team

NPM/volunteers



**London Borough of Hounslow**  
Hounslow House, 7 Bath Road  
Hounslow TW3 3EB  
[www.hounslow.gov.uk](http://www.hounslow.gov.uk)

---

**Tel: 0208 583 5555**

---



**London Borough  
of Hounslow**

**Lampton**  
Services  
Greenspace