

## **Deposited Documents – Reference TMO/P017/23**

Held on deposit online on the London Borough of Hounslow's website -

[www.hounslow.gov.uk/downloads/20165/traffic\\_notices](http://www.hounslow.gov.uk/downloads/20165/traffic_notices)

Placed on deposit on Friday, 7 July 2023

End of consultation period is Friday, 28 July 2023

## **Proposed goods vehicle loading bay – Boston Manor Road, Brentford**

### **Contents:**

- 1. Notice of Intent dated 7 July 2023**
- 2. Proposed Traffic Management Orders**
  - A. The London Borough of Hounslow (Loading Places) (Amendment No.\*\*\*) Order 20\*\*
- 3. Statement of Reasons**
- 4. Plan**
- 5. Existing Traffic Management Orders**
  - A. London Borough of Hounslow (Loading Places) Order 2009 [2009/04]

Any person wishing to comment on or object to the order should follow the instructions on the Notice.

Any queries regarding these deposited documents should be sent by email to [trafficorders@hounslow.gov.uk](mailto:trafficorders@hounslow.gov.uk) or alternatively a voicemail can be left on extension 3322.

## **Proposed goods vehicle loading bay – Boston Manor Road, Brentford**

### **A. The London Borough of Hounslow (Loading Places) (Amendment No.\*\*\*) Order 20\*\***

1. The London Borough of Hounslow proposes to make the above Order under the Road Traffic Regulation Act 1984.
2. The general effect of the above Order would be to introduce a goods vehicles only loading bay in the vicinity of No.3 Station Parade, Boston Manor Road, Brentford, which would operate between the hours of 7am and 10pm, maximum stay of 40 minutes, no return for one hour.
3. Documents giving further information of the proposed Order can be viewed for a period of 21 days from the date of this Notice online at [hounslow.gov.uk](https://hounslow.gov.uk) by typing in the term “traffic notices” in the search bar.
4. Any person wishing to comment on the proposed Order should send a statement in writing stating the grounds of the objection to the Assistant Director of Traffic, Transport & Parking, Hounslow Council, Hounslow House, 7 Bath Road, Hounslow, Middlesex TW3 3EB or by email to [trafficorders@hounslow.gov.uk](mailto:trafficorders@hounslow.gov.uk) quoting the reference TMO/P017/23, to be received by no later than Friday, 28 July 2023.

Dated 7 July 2023

Jefferson Nwokeoma  
Assistant Director Traffic, Transport & Parking

# Traffic Management Order

20\*\* No.\*\*

The London Borough of Hounslow (Loading Places) (2009, No.1) (Amendment No.\*\*\*) Order 20\*\*

Made on \*\* \* 20\*\*

Coming into operation on \*\* \* 20\*\*

The Council of the London Borough of Hounslow, after consulting the Commissioner of Police of the Metropolis, in exercise of the powers conferred by section 6 and 124 of the Road Traffic Regulation Act 1984<sup>a</sup>, and of all other enabling powers hereby make the following Order:

1. This Order may be cited as the London Borough of Hounslow (Loading Places) (2009, No.1) (Amendment No.\*\*\*) Order 20\*\* and shall come into operation for all purposes on \*\* \* 20\*\*.
2. Without prejudice to the validity of anything done or to any liability incurred in respect of any act or omission before the coming into operation of this Order, the London Borough of Hounslow (Loading Places) Order 2009<sup>b</sup> shall have effect as though:
  - a) the item numbered \*\* was added to Schedule 2 to that Order with the item similarly numbered and set out in the Schedule to this Order.

Dated this \*\* day of 20\*\*

Assistant Director Transport, Parking & Environmental Strategy  
(The officer appointed for this purpose)

## Schedule

1. Item	2. Designated loading place	3. Permitted hours	4. Maximum stay	5. No return within
**	<b>Boston Manor Road, Brentford</b> from a point 3 metres north-west of the south-eastern flank wall of No.3 Station Parade, Boston Manor Road, south-eastwards for a distance of 18 metres	7am to 10pm	40 minutes	1 hour

<sup>a</sup> 1984 c.27

<sup>b</sup> LBH 2009/04

---

### **EXPLANATORY NOTE**

(This Note is not part of the Order, but is intended to indicate its general purport.)

This Order amends the Order of 2009 by introducing a new goods vehicles loading bay in the vicinity of No.3 Station Parade, Boston Manor Road, Brentford.

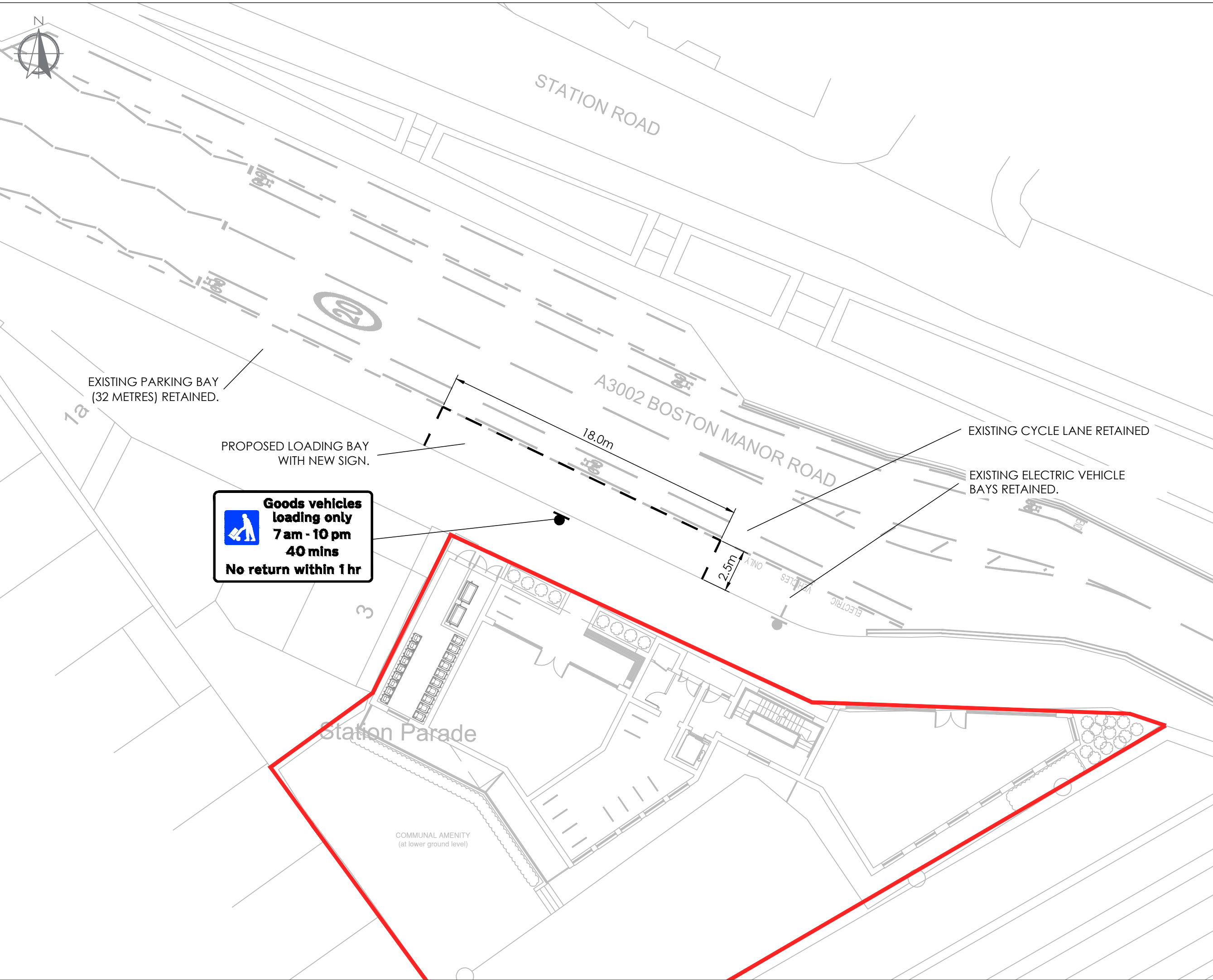


**London Borough  
of Hounslow**

## **Proposed goods vehicle loading bay – Boston Manor Road, Brentford**

### **STATEMENT OF REASONS**

The Council is proposing to introduce a goods vehicles only loading bay in the vicinity of No.3 Station Parade, Boston Manor Road, Brentford, to enable servicing and deliveries to the development. The loading bay will operate between the hours of 7am and 10pm, maximum stay 40 minutes, no return for one hour.



**NOTES**

This drawing has been prepared for the purpose of planning discussions and does not constitute a detailed design drawing, or construction drawing. A Design Hazard Inventory has been prepared by RGP setting out the hazards which have been designed out. This is available upon request.

SITE BOUNDARY

This map is based on or reproduced from Ordnance Survey material with the permission of Ordnance Survey on behalf of the controller of Her Majesty's Stationary Office (c) Crown Copyright. Licence Number: AL100037123. RGP accept no liability for any inaccuracies with the data.

**RESIDUAL HAZARDS**

In addition to the hazards/risks normally associated with the type of work detailed on this drawing, please note the following residual hazards:

It is assumed that all works will be carried out by a competent contractor working, where appropriate, to an approved risk assessment and method statement.

Rev.	Drawn	Comments	Date
P1	SJ	FIRST ISSUE	02/05/23



Client Kearns (Boston Manor) Ltd			
Project 3 Station Parade, Boston Manor Road, Brentford			
Drawing Title Proposed Loading Bay			
Drawing No. 2023/7203/002	Rev. P1		
Scale 1:200	Drawn By SJ	Checked By CB	A3



# Traffic Management Order

2009 No.4

---

The London Borough of Hounslow (Loading Places) Order 2009

Made on 27 April 2009

Coming into operation on 4 May 2009

---

## ARRANGEMENT OF ARTICLES

### PART I - PRELIMINARY

	Article
Citation and commencement	1
Revocation	2
Interpretation	3

### PART II - DESIGNATION OF LOADING PLACES

Designation of loading places	4
Vehicles for which loading places are designated	5
Contraventions	6

### PART III - SUPPLEMENTARY PROVISIONS

Manner of standing in a loading place	7
Power to suspend	8
Restriction on the use of a loading place	9
The moving of a vehicle in an emergency	10
Exemptions	11
Placing of traffic signs	12

**Schedule 1** Loading places for passenger vehicles and goods vehicles

**Schedule 2** Loading places for goods vehicles

The Council of the London Borough of Hounslow, after consulting the Commissioner of Police of the Metropolis, in exercise of the powers conferred by section 6 of the Road Traffic Regulation Act 1984<sup>a</sup>, and of all other powers thereunto enabling hereby make the following Order:

---

<sup>a</sup> 1984 c.27

## **PART I - PRELIMINARY**

### **Citation and Commencement**

1. This Order may be cited as the London Borough of Hounslow (Loading Places) Traffic Order 2009 and shall come into operation on 4 May 2009.

### **Revocation**

2. Without prejudice to the validity of anything done or to any liability incurred in respect of any act or omission before the coming into operation of this Order the following Orders are hereby revoked:

The London Borough of Hounslow (Loading Places) (No.1) Traffic Order 1997  
The London Borough of Hounslow (Loading Places) (No.1) Traffic Order 1998  
The London Borough of Hounslow (Loading Places) (No.2) Traffic Order 1998  
The London Borough of Hounslow (Loading Places) (No.1) Traffic Order 1999  
The London Borough of Hounslow (Loading Places) (1998, No.1) (Amendment No.1) Traffic Order 1991  
The London Borough of Hounslow (Loading Places) (No.1) Traffic Order 2000  
The London Borough of Hounslow (Loading Places) (No.2) Traffic Order 2000  
The London Borough of Hounslow (Loading Places) (No.1) Traffic Order 2001  
The London Borough of Hounslow (Loading Places) (No.2) Traffic Order 2001  
The London Borough of Hounslow (Loading Places) (No.1) Traffic Order 2002  
The London Borough of Hounslow (Loading Places) (No.2) Traffic Order 2002  
The London Borough of Hounslow (Loading Places) (No.1) Traffic Order 2003  
The London Borough of Hounslow (Loading Places) (No.2) Traffic Order 2003  
The London Borough of Hounslow (Loading Places) (No.3) Traffic Order 2003  
The London Borough of Hounslow (Loading Places) (No.1) Traffic Order 2004  
The London Borough of Hounslow (Loading Places) (No.2) Traffic Order 2004  
The London Borough of Hounslow (Loading Places) (1998, No.1) (Amendment No.1) Traffic Order 2005  
The London Borough of Hounslow (Loading Places) (No.2) Traffic Order 2005  
The London Borough of Hounslow (Loading Places) (No.1) Traffic Order 2006  
The London Borough of Hounslow (Loading Places) (No.2) Traffic Order 2006  
The London Borough of Hounslow (Loading Places) (No.3) Traffic Order 2006  
The London Borough of Hounslow (Loading Places) (No.4) Traffic Order 2006  
The London Borough of Hounslow (Loading Places) (No.1) Traffic Order 2007  
The London Borough of Hounslow (Loading Places) (2005, No.2) (Amendment No.1) Traffic Order 2007  
The London Borough of Hounslow (Loading Places) (No.2) Traffic Order 2007

### **Interpretation**

3. (1) In this Order, except where the context otherwise requires:

"civil enforcement officer" has the same meaning as in the Traffic Management Act 2004<sup>b</sup>;

"Council" means the Council of the London Borough of Hounslow;

---

<sup>b</sup> 2004 c.18



"driver" in relation to a vehicle waiting in a loading place means the person driving the vehicle at the time it was left in the loading place;

"enactment" means any enactment, whether public, general or local, and includes any order, byelaw, rule, regulation, scheme or other instrument having effect by virtue of an enactment;

"goods" means goods of any kind whether animate or inanimate and includes postal packets of any description; and "delivering" and "collecting" in relation to any goods includes checking the goods for the purpose of their delivery or collection;

"goods vehicle" means a motor vehicle or trailer constructed or adapted for use for the carriage or haulage of goods or burden of any description;

"loading place" means any area on a highway designated as such by Article 3 of this Order;

"owner", has the same meaning as in the Civil Enforcement of Parking Contraventions (England) General Regulations 2007<sup>c</sup>;

"parking contravention" has the meaning as assigned to it in Part 1 of Schedule 7 of the Traffic Management Act 2004;

"passenger vehicle" means a motor vehicle (other than a motor cycle or invalid carriage) constructed or adapted solely for the carriage of not more than eight passengers (exclusive of the driver) and their effects and not drawing a trailer;

"permitted hours", in relation to a loading place, means the days and hours relating to that loading place as are specified in column 3 of Schedule 1 and 2;

"telecommunications system" has the same meaning as in the Telecommunications Act 1984<sup>d</sup>;

- (2) Any reference in this Order to a numbered Article or Schedule shall, unless the context otherwise requires, be constructed as a reference to the Article or Schedule bearing that number in this Order.

## **PART II - DESIGNATION OF LOADING PLACES**

### **Designation of loading places**

4. (1) The areas of highway as described in column 2 of Schedule 1 and 2 are designated as a loading places during the permitted hours.
- (2) The limits of each loading place shall be indicated by means of road markings and road signs in accordance with the Traffic Signs Regulations and General Directions 2002.

---

<sup>c</sup> SI.2007/3483

<sup>d</sup> 1984 c.21

## **Vehicles for which loading places are designated**

5. (1) Each loading place in Schedule 1 may be used, subject to the provisions of the Order, by such class of vehicles as are passenger vehicles or goods vehicles.
- (2) Each loading place in Schedule 2 may be used, subject to the provisions of the Order, by such class of vehicles as are goods vehicles.

## **Contravention**

6. (1) If a vehicle is left in a loading place in Schedule 1 and 2 without complying with the requirements of this Order, then a contravention of this Order and a parking contravention shall be deemed to have occurred.

## **PART III - SUPPLEMENTARY PROVISIONS**

### **Manner of standing in a loading place**

7. (1) Every vehicle using a loading place shall stand so that:
  - (a) that the longitudinal axis of the vehicle stands parallel to the edge of the carriageway; and
  - (b) that the distance between the edge of the carriageway and the nearest wheel of the vehicle is not more than 300mm.

### **Power to suspend the use of a loading place**

8. (1) Any person duly authorised by the Council may suspend the use of a loading place or any part thereof whenever they consider such suspension reasonably necessary:
  - (a) for the purpose of facilitating the movement of traffic or promoting its safety;
  - (b) for the purpose of any building operation, demolition or excavation adjacent to the loading place, the maintenance, improvement or reconstruction of the highway or the cleansing of gullies in or adjacent to the loading place, the laying, erection, alteration or repair in or adjacent to the loading place of any sewer or of any main, pipe or apparatus for the supply of gas, water or electricity or any telecommunication system or the placing, maintenance or removal of any traffic sign;
  - (c) for the convenience of occupiers of premises adjacent to the loading place on any occasion of the removal of furniture to or from one office or dwelling house adjacent to the loading place from or to a depository, another office or dwelling house;
  - (d) on any occasion on which it is likely by reason some special attraction that any street will be thronged or obstructed; or
  - (e) for the convenience of occupiers of premises adjacent to the loading place at times of weddings or funerals, or on other special occasions.

- (2) A police constable in uniform may suspend for not longer than seven days the use of a loading place or any part thereof whenever he considers suspension reasonably necessary for the purposes of facilitating the movement of traffic or promoting its safety.
- (3) Any person or police constable suspending the use of a parking place or any part thereof in accordance with the provisions of paragraph (1) or (2) of this Article shall place or cause to be placed in or adjacent to that loading place or that part thereof, as the case may be, a traffic sign indicating that the waiting and loading of vehicles is prohibited.
- (4) The driver of a vehicle shall not cause or permit it to wait in a loading place during such period as there is in or adjacent to that loading place a traffic sign placed in pursuance of paragraph (3) of this Article, provided that nothing in this paragraph shall apply to:
  - (a) in respect of any vehicle being used for Fire Brigade, Ambulance or Police purposes: or
  - (b) to anything done with the permission of the person suspending the use of the loading place thereof in pursuance of paragraph (1) or (2) of this Article.

#### **Restriction on the use of a loading place**

9. (1) The driver of a vehicle shall not cause or permit it to wait in the loading place for longer than is necessary for the purpose of loading or unloading goods only and in any event for no longer than the maximum period permitted relating to that loading place as is specified in column 4 of Schedule 1 and 2.
- (2) The driver of a vehicle which has left a loading place, after waiting thereon, shall not, during the permitted hours relating to that loading place, cause or permit such vehicle to wait again in that loading place within the period of time relating to that loading place as is specified in column 5 of Schedule 1 and 2.
- (3) During the permitted hours, no person shall use any loading place or any vehicle while it is in a loading place in connection with the sale or offering or exposure for sale of any goods to any person, in or near the loading place or in connection with the selling or offering for sale of his or her skill in handicraft or their services in any other capacity.

#### **The moving of a vehicle from a loading place in an emergency**

10. (1) Any person duly authorised by the Council, a Police Constable in uniform or a Traffic Warden may move or cause to be moved, in case of an emergency, to any place considered fit, any vehicle left unattended in a loading place.

#### **Exemptions**

11. (1) Notwithstanding the foregoing provisions of this Order any vehicle may wait in a loading place if:
  - (b) the vehicle is being used for fire brigade, ambulance or police purposes;

- (c) the vehicle, not being a passenger vehicle, is being used in the service of a local authority in pursuance of statutory powers or duties provided that in all circumstances it is reasonably necessary in the exercise of such powers or in the performance of such duties for the vehicle to wait in the loading place.
- (d) the vehicle is waiting because the driver is prevented from proceeding by circumstances beyond their control or the vehicle is waiting because it is necessary to do so in order to avoid an accident; or
- (e) the vehicle is waiting only for so long as may be necessary to enable it to be used in connection with the removal of any obstruction to traffic.

**Placing of traffic signs, etc.**

12. (1) The Council shall:

- (a) place and maintain traffic signs indicating the limits of each loading place;
- (b) place and maintain in or in the vicinity of each loading place referred to in Schedule 1 and 2 traffic signs indicating that the loading place may be used during the permitted hours relating to that loading place by vehicles specified in Article 5; and
- (c) carry out such other work as is reasonably required for the purposes of the satisfactory operation of the loading place.

Dated this twenty-seventh day of April 2009.



Director of Environment  
(The Officer appointed for this purpose)

**SCHEDULE 1**  
**(loading places for passenger vehicles and goods vehicles)**

1. Item	2. Designated loading place	3. Permitted hours	4. Maximum stay	5. No return within
1	<b>Chiswick High Road, Chiswick</b> the north side from a point 17 metres east of a point opposite the party wall of Nos. 476 and 478 Chiswick High Road eastwards for a distance of 16 metres.	Mon-Sat 7am-7pm	20 minutes	1 hour
2	<b>Chiswick High Road, Chiswick</b> the north side from a point 2 metres east of a point opposite the party wall of Nos. 488 and 490 Chiswick High Road eastwards for a distance of 10.5 metres.	Mon-Sat 7am-7pm	20 minutes	1 hour
3	<b>Spring Grove Road, Isleworth</b> the south-west side from a point 10 metres south-east of a point opposite the common boundary of No. 233 Spring Grove Road and No. 1 Clifton Road south-eastwards for a distance of 12 metres.	Mon-Sat 7am-7pm	20 minutes	1 hour

**SCHEDULE 2**  
**(loading places for goods vehicles)**

1. Item	2. Designated loading place	3. Permitted hours	4. Maximum stay	5. No return within
1	<b>Bath Road, Hounslow</b> the north-east side between the western wall of Yates Wine Lodge, No.1 Bath Road, Hounslow south-eastwards for a distance of 29 metres.	at any time	40 minutes	1 hour
2	<b>Bath Road, Hounslow</b> the south-west side in the lay-by of the road fronting Nos. 266 and 272 Bath Road, Hounslow, from a point 9.6 metres north-west of the south-eastern flank wall of No. 266 Bath Road, Hounslow north-westwards for a distance of 22 metres.	at any time	20 minutes	1 hour
3	<b>Boston Park Road, Brentford</b> the north-west side from a point 9.5 metres south-west of the north-eastern wall of "The Globe" public house, Windmill Road, Brentford south-westwards for a distance of 6 metres.	Mon-Fri 7am-7pm	20 minutes	1 hour
4	<b>Chiswick High Road, Chiswick</b> the north side from a point 2 metres east of a point opposite the western wall of No. 560 Chiswick High Road westwards for a distance of 16 metres.	Mon-Sat 7am-7pm	20 minutes	1 hour
5	<b>Chiswick High Road, Chiswick</b> the south side from a point 1 metre west of the eastern boundary wall of No. 305 Chiswick High Road westwards for a distance of 7 metres.	Mon-Sat 7am-7pm	20 minutes	1 hour
6	<b>Chiswick High Road, Chiswick</b> the south side between a point 7.4 metres east of the eastern kerb-line of Airedale Avenue and a point 19.4 metres east of that kerb-line.	at any time	20 minutes	1 hour
7*	<b>Chiswick High Road, Chiswick</b> the north side from a point opposite the party wall of Nos. 164 and 166 Chiswick High Road eastwards for a distance of 15 metres. <i>moved to Sch. 1 2010/21</i>	at any time	20 minutes	1 hour
8*	<b>Chiswick High Road, Chiswick</b> the north side of the service road linking Devonshire and Linden Gardens, from a point 3 metres east of a point opposite the party wall of Nos. 175 and 179 Chiswick High Road eastwards for a distance of 3 metres - vehicles to stand at 45 degrees to the kerb. <i>* description amended - 2011/46</i>	Mon-Sat 7am-7pm	20 minutes	1 hour
9	<b>Chiswick High Road, Chiswick</b> the southeast side of the service road fronting Nos.155 to 165 Chiswick High Road, W4 between a point opposite the north-eastern wall of No.155 Chiswick High Road and a point opposite the south-western wall of No.165 Chiswick High Road, W4.	Mon-Sat 7am-7pm	20 minutes	1 hour
10	<b>Chiswick High Road, Chiswick</b> the north side from a point 4.00 metres east of the a point opposite the party wall of Nos. 464 and 466 Chiswick High Road eastwards for a distance of 9.00 metres.	at any time	20 minutes	1 hour
11	<b>Chiswick High Road, Chiswick</b> the north side from a point 3 metres east of the eastern kerb-line of Thorney Hedge Road eastwards for a distance of 12 metres.	Mon-Sat 7am-7pm	20 minutes	1 hour
12*	<b>Chiswick Lane, Chiswick</b> the west side from a point in-line with the north-western wall of No.2 Chiswick Lane southwards for a distance of 17 metres. <i>* description amended by 2012/77</i>	Mon-Sat 7am-7pm	20 minutes	1 hour
13	<b>Clarence Road, Chiswick</b> the south-west side from a point 2 metres south-east of the north-western wall of No. 525 Chiswick High Road to a point 3 metres south-east of the south-eastern wall of No.525 Chiswick High Road.	Mon-Sat 7am-7pm	20 minutes	1 hour
14	<b>Devonshire Road, Chiswick</b> the north-east side from a point opposite the party wall of Nos.13/15 Devonshire Road south-eastwards for a distance of 17.9 metres.	Mon-Sat 7am-7pm	20 minutes	1 hour

**SCHEDULE 2 (continued)**

1. Item	2. Designated loading place	3. Permitted hours	4. Maximum stay	5. No return within
15	<b>Devonshire Road, Chiswick</b> the south-west side from a point 1 metre north-west of a point opposite the party wall of No. 167 Chiswick High Road and No. 1b Devonshire Road to a point 1 metre south-east of a point opposite the party wall of Nos. 1a/3a Devonshire Road.	Mon-Sat 7am-7pm	20 minutes	1 hour
16	<b>Fair Street, Hounslow</b> the east side from a point 2 metres north of a point opposite the southern boundary wall of Nos. 147 to 149 High Street, Hounslow northwards for a distance of 16 metres.	at any time	20 minutes	1 hour
17	<b>High Street, Brentford</b> the north-east side from a point opposite the party wall of Nos. 406 and 407 High Street, Brentford north-eastwards for a distance of 12 metres.	Mon-Sat 10am- 4pm	20 minutes	1 hour
18	<b>High Street, Brentford</b> the north-east side from a point opposite the north-eastern wall of No. 411 High Street, Brentford south-westwards for a distance of 7 metres.	Mon-Sat 10am- 4pm	20 minutes	1 hour
19	<b>High Street, Hounslow</b> the south side from a point opposite the party wall of Nos. 131 and 133 High Street, Hounslow eastwards for a distance of 20 metres.	at any time	20 minutes	1 hour
20	<b>High Street, Hounslow</b> the south side from a point opposite the party wall of Nos. 177 and 179 High Street, Hounslow westwards for a distance of 20 metres.	at any time	20 minutes	1 hour
21	<b>Hounslow Road, Feltham</b> the north-west side from a point opposite the south-western boundary of No. 17 Station Parade, Hounslow Road, Feltham north-eastwards for a distance of 12 metres.	Mon-Sat 10am- 4pm	20 minutes	1 hour
22 *	<b>Kingsley Road, Hounslow</b> the south-west side between a point opposite the common boundary of Nos. 4 and 6 Kingsley Road and a point opposite the common boundary of Nos. 6a/8 Kingsley Road. <i>- moved to Sch 1 - 2011/34.</i>	7am- midnight	20 minutes	1 hour
23	<b>Lampton Road, Hounslow</b> the north-east side from a point 27 metres north-east of the north-eastern wall of No.4 Lampton Road north-westwards for a distance of 15 metres.	at any time	40 minutes	1 hour
24 *	<b>Linden Gardens, Chiswick</b> the north-east side of the south-west arm, between a point 600 millimetres south-east of the north-western wall of No. 225a Chiswick High Road south-eastwards for a distance of 9.4 metres. <i>- Description amended - 2011/14</i>	Mon-Sat 7am-7pm	20 minutes	1 hour
25	<b>London Road, Brentford</b> the south-east side between a point 5 metres south-west of the south-western wall of No. 11 London Road, Brentford and a point 12 metres south-west of that wall.	Mon-Sat 10am- 4pm	20 minutes	1 hour
26 *	<b>London Road, Isleworth</b> the north-west side from a point opposite the party wall of Nos. 542/544 London Road, Isleworth north-eastwards for a distance of 15 metres. <i>- amended, descrypt - moved to sch 1 - 2010/25</i>	Mon-Sat 7am-7pm	20 minutes	1 hour
27	<b>Market Place, Brentford</b> the south-west side from a point 5 metres south-east of the north-western wall of Brentford Magistrates Court, south-eastwards for a distance of 16 metres.	at any time	20 minutes	1 hour
28	<b>Rosemary Avenue, Hounslow</b> the south-east side from a point 6 metres north-east of a point opposite the south-western boundary of No.302 Bath Road, Hounslow north-eastward for a distance of 18 metres.	at any time	20 minutes	1 hour

## SCHEDULE 2 (continued)

1. Item	2. Designated loading place	3. Permitted hours	4. Maximum stay	5. No return within
29	<b>South Street, Isleworth</b> the south-east side from a point 5 metres east of the eastern wall of Nos.28 and 30 Shrewsbury Walk, South Street eastwards for a distance of 20 metres.	Mon-Sat 8am-6.30pm	20 minutes	1 hour
30	<b>South Street, Isleworth, north side, from a point 5 metres south-east of the party wall of Nos.2/4 South Street, to a point 4.4m north-west of the western wall of No.4 South Street</b>	Mondays to Saturdays 8am-6.30pm	20 minutes	1 hour
Item 30 amended by TMO 2021/36				
31	<b>Stile Hall Gardens, Chiswick</b> the north-east side from a point 4 metres south-east of the north-western wall of No. 10 Stile Hall Parade to a point opposite the south-eastern wall of No.10 Stile Hall Parade.	Mon-Sat 7am-7pm	20 minutes	1 hour
32	<b>Sutton Court Road, Chiswick</b> the north-east side in the lay by fronting Nos. 184- 192 Sutton Court Road, from a point 4 metres north-west of a point opposite the south-eastern wall of No. 188 Sutton Court Road north-westwards for a distance of 9.2 metres.	at any time	20 minutes	1 hour
33	<b>Thornbury Road, Isleworth</b> the south-west side from a point 16.5 metres north-west of the north-western kerb-line of London Road, Isleworth north-westwards for a distance of 12 metres.	Mon-Sat 7am-7pm	20 minutes	1 hour
34	<b>Twickenham Road, Isleworth</b> the west side between a point 2 metres south of the party wall of No.229 and 231 Twickenham Road, Isleworth and a point 1 metre south of the northern wall of No.229 Twickenham Road, Isleworth.	Mon-Sat 8am-6.30pm	20 minutes	1 hour
35	<del><b>The unnamed road</b> which lies between Nos. 174 and 178 High Street Hounslow, the east side from a point 7 metres north of the southern boundary wall of No.174 High Street, Hounslow northwards for a distance of 12 metres.</del> <i>revoked by 2012/2</i>	at any time	20 minutes	1 hour
36	<b>Upper Square, Isleworth</b> the south-west side from a point 1 metre south-east of the north-western wall of No. 18 Upper Square south-eastwards for a distance of 11 metres.	Mon-Sat 8am-6.30pm	20 minutes	1 hour
37	<b>Vicarage Farm Road, Hounslow</b> the south-east side from a point 2.7 metres south-west of the north-eastern wall of No.331 Vicarage Farm Road south-westwards for a distance of 12 metres. <i>* moved to Sch 1 - 2011/19</i>	at any time	20 minutes	1 hour
38	<b>Vicarage Farm Road, Hounslow</b> the north-west side from a point 5 metres south-west of a point opposite the common boundary of Nos.60 and 62 Vicarage Farm Road north-eastwards for a distance of 10 metres.	at any time	20 minutes	1 hour
39	<b>Woodlands Road, Isleworth</b> the south-east side from a point 1 metre north-east of a point opposite the south-western wall of No. 1a Woodlands Road south-westwards for a distance of 12 metres.	Mon-Sat 7am-7pm	20 minutes	1 hour

### EXPLANATORY NOTE

(This Note is not part of the Order, but is intended to indicate its general purport.)

The Hounslow (Loading Places) Order 2009 consolidates into a single Order the various Loading Places Orders. The Order also allows for passenger vehicles as well as goods vehicles to use those loading places designated in Schedule 1.

*\* Further additions to Loading TMO can be found on the attached TMO amendment list \**

## TMO AMENDMENT LIST

AREA: BOROUGH WIDEBASE TMO NO: 2009/04BASE ORDER TITLE : The London Borough of Hounslow (Loading Places) Order 2009

Amendment No.	TMO No.	Description of Amendment
<del>1.</del>	<del>2009/50</del>	<del>No. 40 added to Sch 2 (Thornbury Rd, Isleworth) Revoked by 2012/21</del>
2.	2009/65	No. 41 added to Sch 2 (Holloway St, Hounslow)
3.	2010/12	No. 42 } 43 } added to Sch. 2 (All located in) 44 } High St, Brentford)
4.	2010/21	No 7 moved from Sch. 2 to Sch 1 (Chiswick High Rd) No. 45* added to Sch 1 (Windmill Rd, W4) <sup>* Amended</sup> by 2011/11
5.	2010/25	amended No. 26 <del>moved from Sch. 2 to Sch 1</del> (London Rd, Isleworth) No. 46 added to Sch. 2 (Algar Rd, Isleworth)
<del>6.</del>	<del>2010/32</del>	<del>No 47 added to Sch. 2 (Brook Lane N, Brentford) Revoked by 2013/45</del>
7.	2010/53	No. 48 added to Sch 1 (Staines Rd, Hounslow)
8.	2011/14	No. 24 (description amended) (Linden Grans, W4) No. 45 (description amended) (Windmill Rd, W4)
9.	2011/19	No. 37 moved from Sch 2 to Sch. 1 (Vicarage Farm Rd)
10.	2011/30	No. 49 added to Sch 2 (Church Rd, Heston)



## TMO AMENDMENT LIST

AREA: BOROUGH WIDEBASE TMO NO: 2009/04BASE ORDER TITLE: LBH (Leaving Places) Order 2009

Amendment No.	TMO No.	Description of Amendment
11.	2011/34	No. 22 was moved from Sch. 2 to Sch. 1 (Kingley Rd, Hounslow)
12.	2011/36	No. 50 added to Sch. 2 (Bath Rd, Hounslow)
13.	2011/46	No. 8 - description amended (Chiswick High Rd)
14.	2011/66	No. 51 added to Sch. 2 (Hanworth Rd, Hounslow)
15.	2012/02	No. 52 + 53 added to Sch 2 (Staines Rd, Hounslow)
16.	2012/11	No. 54 + 55 added to Sch 1 (Goat Wharf, Brentford) High St, Brentford No. 56 + 57 added to Sch 2 (Town Meadow High St, Brentford)
17	2012/21	No. 58, 59, 60 added to Sch. 2 item 35 + 40 revoked.
18.	2012/29	No. 61 added to Sch. 2 (Nath Dine, Hounslow)
21.	2013/17	No. 62 added to Sch. 2 (Part 12, Chiswick)