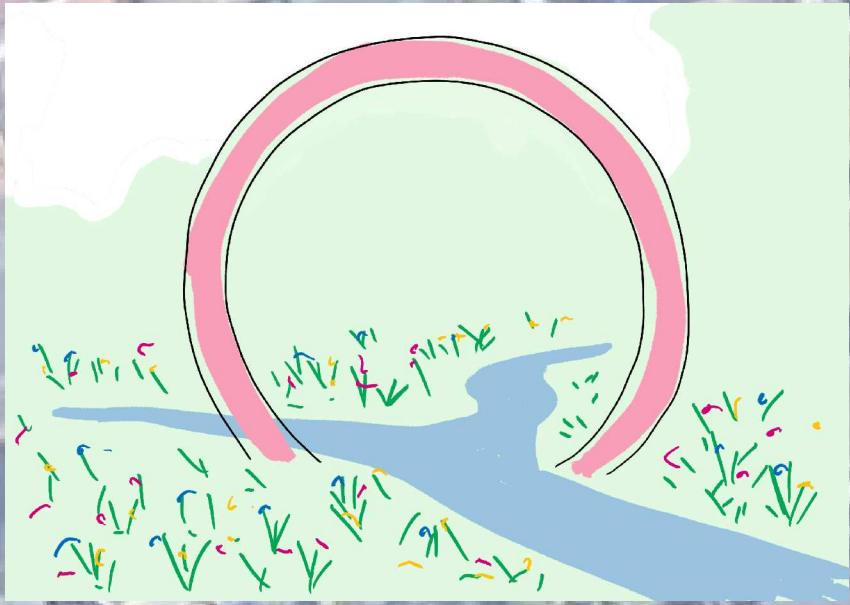
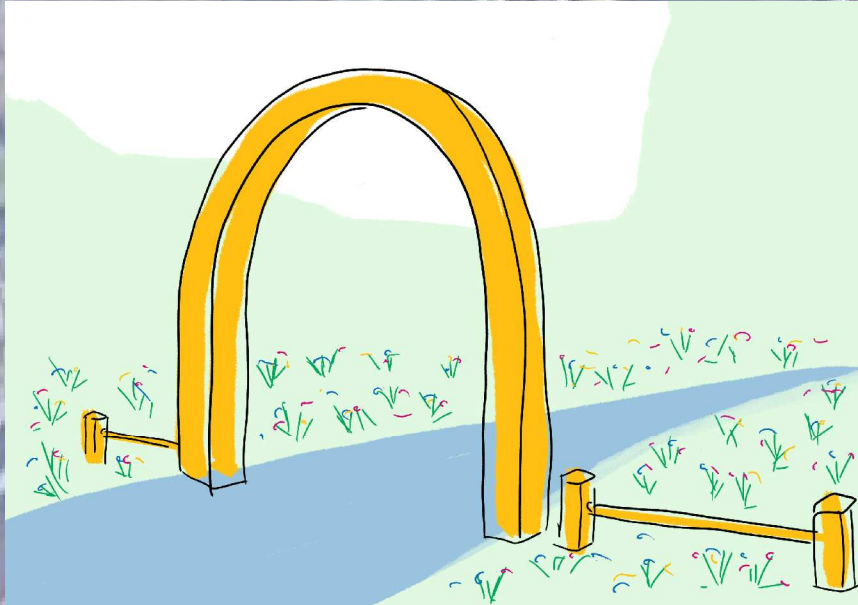




'Moon gates' or arched gates added to key access points to frame views into the park, creating welcoming entrances



Existing perimeter route through the park to be formalised with new surfacing to ensure that it is usable throughout the year



New community orchard, with wildflower understory to provide space for relaxation, growing and picking



New feature tree to provide height and visual interest to improved open space



New wildflower meadow with mown paths to improve biodiversity for wildlife and invertebrates

Native hedgerow and knee rail fence added to the perimeters to create a verdant edge and sense of enclosure and tranquility within the park

New planting and routes through the park are designed to integrate with the existing trees



Existing amenity grass areas retained and enhanced with new tree planing, providing space for continued recreational use



Existing fallen log to be retained and made good for ecological benefit



New native and ornamental tree planting to provide visual interest to improved open space



New natural play space, includes boulders, soft shrub planting, maze, stepping logs and upright drilled-timber logs (pollinator hotel) to provide opportunities for climbing, social play and imaginative play with natural materials



LEGEND

- EXISTING TREES
- FEATURE TREE
- STRUCTURAL TREE
- SUPPLEMENTARY TREE
- ORCHARD TREE
- ORNAMENTAL SHRUB / HERBACEOUS / GRASS PLANTING
- NATIVE HEDGE PLANTING
- EXISTING AMENITY GRASS
- WILDFLOWER MEADOW MIX
- BITUMINOUS MACADAM SURFACE - existing footpath to be retained.
- RESIN / SELF-BINDING GRAVEL - to footpath, to engineers specification.
- GRANITE SETTS - to join the existing and new footpaths.
- MOWN GRASS FOOTPATH
- PLAY MAZE
- TIMBER SEAT
- LITTER BIN
- STEPPING LOGS
- EXISTING / NEW FALLEN LOGS
- PLAY AREA SIGNAGE
- NATURAL BOULDERS
- KNEERAIL FENCING
- POLLINATOR HOTEL
- MOON GATE
- HEIGHT RESTRICTION BARRIER

1:500 0 10 20 metres

D	23/09/21	BT	Amendments in line with client's comments.
C	06/09/21	BT	Amendments in line with client's comments.
B	27/08/21	BT	Amendments in line with client's comments and addition of the north arrow to the design.
A	16/07/20	LR	Amends to landscaping following comments from LB Hounslow and G360
Rev	Date	By	Description
Drawing Status			
CONCEPT LEVEL			
Client		London Borough of Hounslow	
Project		Farnell Road Open Space	
Title		Landscape Concept Plan <b>DRAFT</b>	
Scale		1:500 @ A1	Drawn BT/LR
Date		August 2021	Checked LR / MC
Drawing No.		MW8393-001	Rev D

MAYDENCROFT

Maydencroft Limited, Maydencroft Manor  
Gosmore, Hitchin, Hertfordshire, SG4 7QA

t 0800 157 7707  
e info@maydencroft.co.uk  
w www.maydencroft.co.uk