



Deposited Documents – Reference TMO/P018/21

Held on deposit online

Placed on deposit on Wednesday, 8 September 2021

**Capital Interchange Way & Brentford Community Stadium Event Day
Parking Restrictions**

Contents:

- 1. Notice of Making dated 6 September 2021**
- 2. Traffic Management Orders**
 - A. The London Borough of Hounslow (Capital Interchange Way) (Parking Places) Order 2021
 - B. The London Borough of Hounslow (Waiting and Loading Restriction) (Amendment No.292) Order 2021
- 3. Notice of Intent dated 21 July 2021**
- 4. Proposed Traffic Management Orders**
 - C. The London Borough of Hounslow (Capital Interchange Way) (Parking Places) Order 20**
 - D. The London Borough of Hounslow (Waiting and Loading Restriction) (Amendment No.***) Order 20**
- 5. Statement of Reasons**
- 6. Plans**
- 7. Existing Traffic Management Orders**
 - A. The London Borough of Hounslow (Capital Interchange Way) (Parking Places) (No.1) Order 2009 [2009/16]
 - B. The London Borough of Hounslow (Capital Interchange Way) (Parking Places) (Amendment No.1) Order [2020/30]
 - C. The London Borough of Hounslow (Waiting and Loading Restriction) (Amendment No.265) Order 2021 [2020/31]

Any queries regarding these deposited documents should be sent by email to trafficorders@hounslow.gov.uk or alternatively a voicemail can be left on extension 3322.



Capital Interchange Way & Brentford Community Stadium Event Day Parking Restrictions

A. The London Borough of Hounslow (Capital Interchange Way) (Parking Places) Order 2021

B. The London Borough of Hounslow (Waiting and Loading Restriction) (Amendment No. 292) Order 2021

1. The London Borough of Hounslow hereby gives notice that on 6 September 2021 it made the above Orders under the Road Traffic Regulation Act 1984 on 6 September 2021. The Orders will come into operation on 24 September 2021.
2. The general effect of the Orders will be to update the descriptions of the waiting and loading restrictions and parking places in Capital Interchange Way to include an “at any time” loading restriction and a restriction on waiting on days when events are being held at the Brentford Community Stadium and when the relevant signs are displayed.
3. Documents giving further information of the Orders can be viewed for a period of six weeks from the date of this Notice online at hounslow.gov.uk by typing in the term “traffic notices” in the search bar.
4. Any person desiring to question the validity of the Orders or any provision contained therein on the grounds that they are not within the relevant powers of the Road Traffic Regulation Act 1984, or that any of the relevant regulations made thereunder have not been complied with in relation to the Orders may, within six weeks of the date on which the Orders were made, make an application for the purpose to the High Court.

Dated 8 September 2021

Jefferson Nwokeoma
Assistant Director for Traffic, Transport & Parking

Traffic Management Order

2021 No.48

The London Borough of Hounslow (Waiting and Loading Restriction) (Amendment No.292) Order 2021

Made on 6 September 2021

Coming into operation on 24 September 2021

The Council of the London Borough of Hounslow, after consulting the Commissioner of Police of the Metropolis, in exercise of the powers conferred by sections 6 and 124 to the Road Traffic Regulation Act 1984¹, as amended and of all other enabling powers hereby make the following Order:

- 1 This Order shall come into operation on 24 September 2021 and may be cited as the London Borough of Hounslow (Waiting and Loading Restriction) (Amendment No.292) Order 2021.
- 2 Without prejudice to the validity of anything done or to any liability incurred in respect of any act of omission before the coming into operation of this Order, The Hounslow (Waiting and Loading Restriction) Order 2008² shall have effect as though:
 - a) in Article 3 there were added the following definitions:

“Brentford Community Stadium Event Day” means any such day when an event is taking place at Brentford Community Stadium, Lionel Road South, Brentford;

“authorised person” means a person authorised by the Council, a police community support officer, an accredited person, where:

 - i) “police community support officer” means a person who has been so designated by the Metropolitan Police Service as provided for by Section 38 of the Police Reform Act 2002³, and
 - ii) “accredited person” means a person who has been accredited by the Metropolitan Police Service under the Community Safety Accreditation Scheme as provided for by Section 41 of that Act;

and in either case whilst exercising the powers of a police community support officer or an accredited person that person is wearing an approved uniform as provided for by Section 42(2) of that Act;
 - (a) the item numbered 110 in Schedule 1 to that Order were substituted with the item similarly numbered and set out in the Schedule 1 to this Order;
 - (b) there were added to Schedule 2 to that Order the items numbered 223 in Schedule 2 to this Order; and
 - (c) Schedule 3 to that Order was substituted with Schedule 3 to this Order.

¹ 1984 c.27

² 2008/24

³ 2002 c.30

Dated this sixth day of September 2021

A handwritten signature in black ink, appearing to be 'J. Nwokeoma', written in a cursive style.

Assistant Director of Traffic, Transport & Parking
Jefferson Nwokeoma

Schedule 1

1 Item Number	2 Street	3 Prescribed hours
110	<p>Capital Interchange Way, Brentford, Hounslow</p> <p>(a) north-west & south-west side,</p> <p style="padding-left: 20px;">(i) from a point 38 south-east of the north-western boundary of Brentford Fountain Leisure Centre, 658 Chiswick High Road to a point 34.5 metres north-east of the south-westernmost building line of West London Volkswagen, Capital Interchange Way</p> <p>(b) north-east side,</p> <p style="padding-left: 20px;">(i) from the north-western boundary of Brentford Fountain Leisure Centre, 658 Chiswick High Road south-eastwards for a distance of 38 metres</p> <p style="padding-left: 20px;">(ii) from the north-western boundary of Brentford Fountain Leisure Centre, 658 Chiswick High Road to a point 10 metres south-east of the north-western building line of Citroen London West, Capital Interchange Way</p> <p>(c) north-east & south-east side,</p> <p style="padding-left: 20px;">(i) from a point 10 metres south-east of the north-western building line of Citroen London West, Capital Interchange Way to a point 58 metres south-west of the north-easternmost building line of Citroen London West, Capital Interchange Way</p> <p>(d) south-east side,</p> <p style="padding-left: 20px;">(i) from a point 58 metres south-west of the north-easternmost building line of Citroen London West, Capital Interchange Way north-eastwards for a distance of 22 metres</p> <p style="padding-left: 20px;">(ii) from a point 36 metres south-west of the north-easternmost building line of Citroen London West, Capital Interchange Way north-eastwards for a distance of 17.5 metres</p> <p style="padding-left: 20px;">(iii) from a point 18.5 metres south-west of the north-easternmost building line of Citroen London West, Capital Interchange Way to a point 9.5 metres north-east of the north-easternmost building line of Citroen London West, Capital Interchange Way</p>	<p style="text-align: center;">A</p> <p style="text-align: center;">A</p> <p style="text-align: center;">SSS</p> <p style="text-align: center;">A</p> <p style="text-align: center;">RRR</p> <p style="text-align: center;">A</p> <p style="text-align: center;">RRR</p>

Schedule 1 (continued)

1 Item Number	2 Street	3 Prescribed hours
	<p>Capital Interchange Way, Brentford, Hounslow (continued)</p> <p>(iv) from a point 9.5 metres north-east of the north-easternmost building line of Citroen London West, Capital Interchange Way north-eastwards for a distance of 18.5 metres</p> <p>(v) from a point 28 metres north-east of the north-easternmost building line of Citroen London West, Capital Interchange Way to a point 15.5 metres south-west of the south-westernmost building line of West London Volkswagen, Capital Interchange Way</p> <p>(vi) from a point 15.5 metres south-west of the south-westernmost building line of West London Volkswagen, Capital Interchange Way north-eastwards for a distance of 26 metres</p> <p>(vii) from a point 10.5 metres south-west of the south-westernmost building line of West London Volkswagen, Capital Interchange Way north-eastwards for a distance of 24 metres</p>	<p>A</p> <p>RRR</p> <p>A</p> <p>RRR</p>

1 Item Number	2 Street	3 Restricted hours
223	<p>Capital Interchange Way, Brentford, Hounslow</p> <p>(a) north-west & south-west side, (i) from a point 34.5 metres north-east of the south-westernmost building line of West London Volkswagen, Capital Interchange Way to a point 38 south-east of the north-western boundary of Brentford Fountain Leisure Centre, 658 Chiswick High Road</p> <p>(b) north-east side, (i) from the north-western boundary of Brentford Fountain Leisure Centre, 658 Chiswick High Road south-eastwards for a distance of 38 metres</p> <p>(c) north-east & south-east side, (i) from a point 10 metres south-east of the north-western building line of Citroen London West, Capital Interchange Way to a point 58 metres south-west of the north-easternmost building line of Citroen London West, Capital Interchange Way</p> <p>(d) south-east side, (i) from a point 36 metres south-west of the north-easternmost building line of Citroen London West, Capital Interchange Way north-eastwards for a distance of 17.5 metres</p> <p>(ii) from a point 9.5 metres north-east of the north-easternmost building line of Citroen London West, Capital Interchange Way north-eastwards for a distance of 18.5 metres</p> <p>(iii) from a point 15.5 metres south-west of the south-westernmost building line of West London Volkswagen, Capital Interchange Way north-eastwards for a distance of 26 metres</p>	<p>1</p> <p>1</p> <p>1</p> <p>1</p> <p>1</p> <p>1</p>

Schedule 3

Prescribed/Restricted Hours

1 Prescribed hours - see Schedule 1 or 4	2 Times	3 Prescribed hours - see Schedule 2
A	At any time	1
B	Between 7am-11.30pm	2
C	Between 10am-11pm	3
D	Between 8am-6.30pm	4
E	Between Mon-Sat 7am-7pm	5
F	Between Mon-Sat 7am-6.30pm	6
G	Between Mon-Sat 8am-6.30pm	7
H	Between Mon-Sat 8.30am-6.30pm	8
I	Between Mon-Fri 8am-6.30pm and Sat 8am-1.30pm	9
J	Between Mon-Fri 8.30am-6.30pm and Sat 8.30am-1.30pm	10
K	Between Mon-Fri 8am-6.30pm	11
L	Between Mon-Fri 8.30am-6.30pm	12
M	Between Mon-Sat 7am-9.30am and 4.30pm-7pm	13
N	Between Mon-Fri 7am-10am and 4.30pm-6.30pm	14
O	Between Mon-Fri 7am-9.30am and 4.30pm-6.30pm	15
P	Between Mon-Sat 8am-9.30am and 4.30pm-6.30pm	16
Q	Between Mon-Fri 8am-9.30am and 4.30pm-6.30pm	17
R	Between Mon-Fri 8am-9.30am and 5pm-6.30pm	18
S	Between 8am-midnight	19
T	Between Mon-Sat 8am-midnight	20

Schedule 3 (continued)

1 Prescribed hours - see Schedule 1 or 4	2 Times	3 Prescribed hours - see Schedule 2
U	Between Mon-Sat 8am-8pm	21
V	Between Mon-Sat 8am-9pm	22
W	Between 8am-10pm	23
X	Between 7am-midnight	24
Y	Between Mon-Fri 1pm-2pm	25
Z	Between Mon-Sat 7am-10am and 4pm-7pm	26
AA	Between Mon-Fri 8am-9.30am and 2.30pm-4pm	27
BB	Between Mon-Sat 8am-12pm and 2pm-6pm	28
CC	Between Mon-Fri 9.30am-6pm and Sat 9.30am-12.30pm	29
DD	Between 7am-7pm	30
EE	Between Mon-Fri 7am-6.30pm	31
FF	Between Mon-Fri 9.30am-5.30pm and Sat 9.30am-12.30pm	32
GG	Between Mon-Sat 9am-7pm	33
HH	Between Mon-Fri 9am-6pm	34
JJ	Between Mon-Sat 7am-8pm	35
KK	Between Mon-Fri 9.30am-12.30pm and 4.30pm-6.30pm and Sat 9.30am-12.30pm	36
LL	Between Mon-Fri 8am-6pm	37
MM	Between Mon-Fri 7am-10am and 4pm-7pm and Sat 10am-4pm	38
NN	Between Mon-Fri 9am-5pm	39

Schedule 3 (continued)

1 Prescribed hours - see Schedule 1 or 4	2 Times	3 Prescribed hours - see Schedule 2
OO	Between 5.30pm-1am	40
PP	Between Mon-Fri 9.30am-5.30pm	41
QQ	Between Mon-Fri 7am-7pm	42
RR	Between 7am-10am and 4pm-7pm	43
SS	Between Mon-Fri 7am-10am and 4pm-7pm	44
TT	Between Fri 10am-4pm	45
UU	Between Mon-Fri 9.30am-11.30am and 3.30pm-5.30pm	47
VV	Between 7am-9.30am and 4.30pm-7.30pm	48
WW	Between 9am-5pm	49
XX	Between Mon-Fri 7am-10am and 4pm-7pm and Sat-Sun 10am-4pm	50
YY	Between Mon-Fri 10am-12pm	51
ZZ	Between 10am-3pm	52
AAA	Between Mon-Fri 8.30am-9am and 3pm-3.30pm	53
BBB	Between Mon-Fri 8.30am-9.15am and 3pm-4pm	54
CCC	Between Mon-Sat 9.30am-5pm	55
DDD	Between Mon-Fri 9.30am-6.30pm	56
EEE		57
FFF	Between Mon-Fri 8.15am-4.30pm	58
GGG	Between Mon-Fri 7am-6pm	59
HHH	Between Mon-Fri 7am-10am	60

Schedule 3 (continued)

1 Prescribed hours - see Schedule 1 or 4	2 Times	3 Prescribed hours - see Schedule 2
JJJ	Between Mon-Fri excl Bank Hols 8am-5pm	61
KKK	Between Mon-Fri 8.30am-9.15am and 3pm-5.30pm	62
LLL	Between Mon-Fri 9am-5.30pm	63
MMM	Between Mon-Sat 9am-8pm	64
NNN	Between Mon-Fri 8.15am-4.30pm and the first Sunday of the month 5.30am-1pm	65
OOO	Between Mon-Fri 10am-11am and 3pm-4pm	66
PPP	Between Mon-Sat 2pm-3pm	67
QQQ	Between 9am-7pm	68
RRR	Between Mon-Fri 7am-9am and 3pm-5.30pm and on Community Stadium event days 9am-midnight	69
SSS	Between on Community Stadium event days 9am-midnight	70
TTT	Between Mon-Fri 7am-11pm	71
UUU	Mon-Fri 7am-11pm	72
VVV	Mon-Fri 10am-11am and 7pm-8pm and Saturdays on Brentford FC event days 2.30pm-3.30pm	73
WWW	No waiting on a Brentford FC event day 10am-10pm	74
XXX	Mon-Fri 10am-12pm and 6pm-8pm	75
YYY	9am -8pm	76
ZZZ		77

Schedule 3 (continued)

1 Prescribed hours - see Schedule 1 or 4	2 Times	3 Prescribed hours - see Schedule 2
AAAA	Between Sat-Sun 8am-8pm	78
BBBB	Between Mon-Sat 9am-6pm	79
CCCC	Between 9.30am-6pm	80
DDDD	Between Tuesday 9am-11am	81
EEEE	Between Mon-Sat 9.30am-6.30pm	82
FFFF	Between Mon-Fri 9am-9pm and Sat-Sun 5pm-9pm	83
GGGG	Between Mon-Fri 10am-12pm and 6pm-8pm and Saturdays on Brentford FC event days 2.30pm-3.30pm	84
HHHH	Between Tuesday 9am-11am	85
IIII	Between Mon-Fri 9am-6.30pm	86
JJJJ	Between Mon-Fri 10am-noon and 5pm-7am	87
KKKK	Between Mon-Fri 9.30am-5pm	88
LLLL	7am-11pm on Event days	89
MMMM	Between Mon-Fri 10am-7pm	90
NNNN	Between Mon-Fri 9am-11am	91
OOOO	Between Mon-Sat 10am-7pm	92
PPPP	Between Mon-Sat 1pm-3pm	93
QQQQ	Between Mon - Fri 8am-5pm	94
RRRR	Between Fri 7am-noon	95
SSSS	Between Wednesday 9am-11am	96

Schedule 3 (continued)

1 Prescribed hours - see Schedule 1 or 4	2 Times	3 Prescribed hours - see Schedule 2
TTTT	Between Mon-Fri 10am-12pm and the first Sunday of the month 5.30am-1pm	97
UUUU	Between Mon-Fri 7am-9am and 3pm-5.30pm	98
VVVV	Between Mon-Sat 8am-10am and 4pm-6pm	99
WWWW	Between Mon-Fri 10am-12pm and 6pm-8pm and Sat-Sun 2pm-4pm	100
XXXX	Between 9am-11am and 5pm-7pm	101
YYYY	Between Mon-Fri 9am-11am and 5pm-7pm and Sat-Sun 2pm-4pm	102

EXPLANATORY NOTE

(This Note is not part of the Order, but is intended to indicate its general purport.)

This Order further amends the Hounslow (Waiting and Loading Restriction) Order 2008 so that the restrictions imposed by that Order on vehicles with regard to waiting and loading in Capital Interchange Way, Brentford.

Traffic Management Order

2021 No.49

The London Borough of Hounslow (Capital Interchange Way) (Parking Places) Order 2021

Made on 6 September 2021

Coming into operation on 24 September 2021

ARRANGEMENT OF ARTICLES

PART I - PRELIMINARY

	Article
Citation and commencement	1
Revocations	2
Interpretation	3

PART II - DESIGNATION OF PARKING PLACES

	Article
Designation of parking places	4
Number and situation of parking bays and parking spaces	5
Manner of standing in a parking place	6
Vehicles for which parking places are designated	7
Display of permits and tickets	8
Charge for parking places	9
Payment of the charge at parking places with ticket machines	10
Exemption from charges	11
Contravention	12
Movement of a vehicle in a parking place in an emergency	13

PART III - SUPPLEMENTARY PROVISIONS

Period for which a vehicle may be left after the penalty charge has been incurred	14
Restriction on the removal of permits, tickets and notices	15

Indications by ticket machine and tickets	16
Indications by ticket machine and tickets as evidence	17
Indications and evidence by the telephone payment parking system	18
No tickets to be displayed other than those obtained on payment of the parking charge	19
Interval before a vehicle may again be left in a parking place	20
Power to suspend the use of a parking place	21
Restriction on the use of a parking place	22
Restriction on waiting by a vehicle in a parking place	23
Manner of waiting in a parking place	24
Installation of ticket parking meters, placing of traffic signs, etc	25

SCHEDULES

Schedule 1 - Pay & Display parking places (9am-3pm Monday-Saturday, except event days)

Schedule 2 - Pay & Display parking places (9am-5.30pm Monday-Saturday, except event days)

The Council of the London Borough of Hounslow, having consulted the Commissioner of Police of the Metropolis, in exercise of the powers conferred by sections 45, 46, 49 and 51 and 124 of and Part III and Part IV of Schedule 9 to the Road Traffic Regulation Act 1984^a as amended and the Traffic Management 2004^b and of all other enabling powers hereby make the following Order:

^a 1984 c.27

^b 2004 c.18

PART I - PRELIMINARY

1. Citation and Commencement

- (1) This Order may be cited as The London Borough of Hounslow (Capital Interchange Way) (Parking Places) Order 2021 and shall come into operation for all purposes on 24 September 2021.

2. Revocation

- (1) Without prejudice to the validity of anything done or to any liability incurred in respect of any act or omission before the coming into operation of this Order the following Orders are hereby revoked:
 - (a) The London Borough of Hounslow (Capital Interchange Way) (Parking Places) (No.1) Order 2009^a
 - (b) The London Borough of Hounslow (Capital Interchange Way) (Parking Places) (Amendment No.1) Order 2020^b

3. Interpretation

- (1) In this Order, except where the context otherwise requires, the following expressions have the meanings hereby respectively assigned to them:

“Band A or B vehicle” means a vehicle whose carbon dioxide emissions figure does not exceed 110 grams per kilometre driven.

“carbon dioxide emissions figure” has the same meaning as in the Vehicle Excise and Registration Act 1994b, as amended. For the avoidance of doubt, this is intended to have the same meaning as that used by DVLA for the purpose of vehicle excise duty at the time when this order was made. If there should be any future amendment to the meaning as used by DVLA, such amendment will not, of itself, be binding on the Council for the purposes of this order;

“civil enforcement officer” has the same meaning as in the Traffic Management Act 2004;

"Council" means the Council of the London Borough of Hounslow;

“diesel vehicle” means a vehicle in which the motive power is wholly or partially derived directly or indirectly from a compression ignition engine;

"disabled person" and "disabled person's badge" have the same meanings as in the Disabled Persons (Badges for Motor Vehicles) (England) Regulations 2000^c;

"disabled person's vehicle" has the same meaning as in the Local Authorities' Traffic Orders (Exemptions for Disabled Persons) (England and Wales) Regulations 2000^d;

"driver" in relation to a vehicle waiting in a parking place means the person driving the vehicle at the time it was left in the parking place;

^a LBH 2009/16

^b LBH 2020/30

^c SI.2000/882

^d SI.2000/683

“electric vehicle” means a vehicle in which the electrical motive power is derived from an electrical storage battery which is not connected to any source of power derived from fossil fuel when the vehicle is in motion.

"enactment" means any enactment, whether public, general or local, and includes any order, byelaw, rule, regulation, scheme or other instrument having effect by virtue of an enactment;

“event days” means the days when events are being held at the Brentford Community Stadium, Lionel Road South, Brentford, and when the relevant signs are displayed.

"goods" means goods of any kind whether animate or inanimate and includes postal packets of any description; and "delivering" and "collecting" in relation to any goods includes checking the goods for the purpose of their delivery or collection;

"goods vehicle" has the same meaning as in the The Traffic Signs Regulations and General Directions 2002^a;

“hand-held device” means a wireless hand-held computer used by a civil enforcement officer, which is programmed to interface with the telephone payment parking systems;

“location identification number” means the unique number assigned to the parking place where the telephone payment parking system is operational;

“low emission passenger vehicle” means a vehicle registered on or after 1 April 2017 whose carbon dioxide emissions figure does not exceed 75 grams per kilometre driven

“low emission goods vehicle” means a vehicle registered on or after 1 April 2017 whose carbon dioxide emissions figure does not exceed 100 grams per kilometre driven

“motor cycle and invalid carriage” have the same meaning respectively as in Section 136 of the Road Traffic Regulation Act 1984;

"owner", has the same meaning as in the Civil Enforcement of Parking Contraventions (England) General Regulations 2007^b;

“parking contravention” has the meaning as assigned to it in Part 1 of Schedule 7 of the Traffic Management Act 2004;

"parking place" means any area on a highway designated as such by this Order;

“parking space” means a space in a parking place referred to in Schedules 1, 2, 3, 4, 5, 6, 7 and 8 which is provided for the leaving of vehicles;

"passenger vehicle" means a motor vehicle (other than a motor cycle or invalid carriage) constructed or adapted solely for the carriage of not more than eight passengers (exclusive of the driver) and their effects and not drawing a trailer;

“penalty charge” has the same meaning as in the Civil Enforcement of Parking Contraventions (England) General Regulations 2007

“penalty charge and reduced penalty charge” means a charge set by the Council under the provisions of Part 6 of the Traffic Management 2004 and with the approval of the Secretary of

^a SI.2002/3113

^b SI.2007/3483

State for Transport which is to be paid to the Council within 28 days beginning on the date of the Notice, or in 14 days in the case of a reduced penalty charge, following the issue of the penalty charge notice;

“penalty charge notice” has the same meaning as in the Civil Enforcement of Parking Contraventions (England) General Regulations 2007;

"permitted hours", in relation to a parking place, means the period specified at the beginning of the Schedule relating to that parking place;

“service provider” means the company authorised and appointed by the Council to operate, administer and maintain the payment of parking charges using the telephone payment parking system;

"Schedule" means a Schedule to this Order;

“telephone payment parking system” means a system to facilitate and monitor the payment of parking charges using communication between the driver and the service provider by means of either telephone, text messaging, mobile application or web application;;

“ticket” means a ticket issued by a ticket machine relating to a parking place.

“ticket machine” means a type of parking meter as defined in regulation 46(2) (a) (i) of the Road Traffic Regulation Act 1984 for the purposes of this Order being apparatus designed to indicate the time and to issue tickets indicating the payment of the charge referred to in Article 9 of this Order and the period in respect of which the charge has been paid;

“user”, in relation to a vehicle, means the person by whom such a vehicle is kept and used;

“zero emission vehicle” means a vehicle registered on or after 1 April 2017 whose carbon dioxide emissions figure does not exceed 0 grams per kilometre driven.

- (2) Any reference in this Order to any enactment shall be construed as a reference to that enactment as amended, applied, consolidated, re-enacted by or as having effect by virtue of any subsequent amendment.
- (3) For the purposes of this Order a vehicle shall be regarded as displaying a disabled person's badge in the relevant position when it is so regarded for the purposes of Regulation 3 of the Local Authorities' Traffic Orders (Exemptions for Disabled Persons) (England and Wales) Regulations 2000^a.

PART II - DESIGNATION OF PARKING PLACES

4. Designation of parking places

- (1) The areas of highway as described in column 2 of Schedules 1 and 2 are designated as a parking places.
- (2) The limits of each parking place and the limits of each parking space, if marked within a parking place, shall be indicated on the highway by traffic signs of any size, colour and type prescribed or authorised under Section 64 of the Road Traffic Regulation Act 1984.

6. Manner of standing in a parking place

^a SI 2000/683

- (1) Every vehicle left in a parking place shall stand so that every part of the vehicle is wholly within the limits of any parking space if marked, or within the limits of any parking place.
- (2) Every vehicle left in a parking place in relation to which special provisions as to the manner of standing of a vehicle in that parking place is specified in column 3 of Schedules 1 and 2 shall stand so that as to be in accordance with those provisions.

7. Vehicles for which parking places are designated

- (1) Each parking place referred to in Schedules 1 and 2 may be used subject to the provisions of this Order for the leaving during the permitted hours of such vehicles as are passenger vehicles, goods vehicles or invalid carriages.
- (2) Subject to the provisions of this Order, a person leaving a vehicle in a parking place referred to in Schedules 1 and 2 during the permitted hours shall either:
 - (a) make payment through the telephone payment parking system; or
 - (b) cause to be displayed a valid ticket.

8. Display of permits and tickets

- (1) At all times during which a vehicle is left in a parking place during the permitted hours and where required to do so by Article 7, the driver shall cause either a valid ticket, issued for that vehicle, to be displayed on the front or kerb side of the vehicle so that all the details on the side of the ticket which bears the indication that the parking charge has been paid are clearly visible from the front or kerb side of the vehicle.

9. Charge for use of parking places

- (1) A charge shall be paid for the leaving of a vehicle in a parking place described in Schedules 1 and 2 during the permitted hours, such charge being as specified in Schedule 3.
- (2) No period for a vehicle left in a parking place referred to in Schedules 1 and 2 shall exceed the allocated time as stated in the permitted hours.

10. Payment of parking charge at parking places with ticket machines

- (1) A person leaving a vehicle in a parking place referred to in Schedules 1 and 2 can obtain a valid ticket by inserting the appropriate coins into the ticket machine, which shall be used as a means of collecting the parking charge imposed by this Order, and take such steps as may be necessary to cause the ticket machine to issue a ticket.
- (2) A person leaving a vehicle in a parking place referred to in Schedules 1 and 2 can use the telephone payment parking system to pay the parking charge, imposed by this Order, for the period they wish to park by communicating with the service provider.
- (3) In the case of only one of the methods of payment, as mentioned in paragraphs (1) and (2) of this Article, being available, that method shall be used for the payment of the parking charge.

11. Exemption from charges

- (1) Notwithstanding the foregoing provisions of this Order any disabled person's vehicle displaying in the relevant position a disabled person's badge may be left in any part of a parking place described in Schedules 1 and 2 if the use of that part has not been suspended.

12. Contravention

- (1) If a vehicle is left in a parking place without complying with the provisions of this Order, then a contravention of this Order, and a parking contravention within Part 1 of Schedule 7 to the Traffic Management Act 2004, shall be deemed to have occurred.
- (2) Where a vehicle is left in a parking place without complying with the provisions of this Order, the vehicle may be removed or caused to be removed from that parking place as provided for by Regulations made under section 99 of the Road Traffic Regulation Act 1984.

13. Movement of a vehicle in a parking place in an emergency

- (1) A police constable in uniform, a traffic warden or Civil Enforcement Officer may move or cause to be moved a vehicle from a parking place in an emergency.

PART III - SUPPLEMENTARY PROVISIONS

14. Period a vehicle may be left after the penalty charge has been incurred

- (1) The period for which a vehicle may be left in a parking place during the permitted hours after the penalty charge has been incurred shall not exceed one hour.

15. Restriction on the removal of tickets

- (1) Where a ticket has been displayed on a vehicle, no person, not being the driver of the vehicle, shall remove the ticket from the vehicle unless authorised to do so by the driver.

16. Indications by ticket machine and tickets

- (1) Payment of the charge for a vehicle left in a parking place referred to in Schedules 1 and 2 shall be indicated by the issue of a ticket by a ticket machine relating to that parking place indicating a charge paid in respect of the period in accordance with Schedule 3, the day and date of issue, the expiry date, and by the display of that ticket in the manner specified in Article 8(1)(a).
- (2) The expiry of the period for which payment was made by the charge for a vehicle left in a parking place referred to in Schedules 1 and 2 shall be indicated by the display on the vehicle in accordance with the provisions of Article 8(1)(a) of a ticket issued by a ticket machine relating to that parking place showing the day and date of issue, charge and expiry time of the charge, and the day so shown is not the day on which the vehicle is so left or the time shown on the clock on the said ticket machine is more than two minutes later than the time shown on the ticket.
- (3) The expiry of the period mentioned in Article 14 (being the period for which a vehicle may remain in a parking place after the penalty charge has been incurred) shall be indicated in the case of a vehicle left in a parking place referred to in Schedules 1 and 2 4 by the display on the vehicle in accordance with the provisions of Article 8(1)(a) a ticket issued by a ticket machine relating to that parking place showing the day and date of issue, charge and expiry time of the charge, and the day so shown is not the day on which the vehicle is so left or the time shown on the clock on the said ticket parking meter is more than one hour later than the time shown on the ticket.

17. Indications by ticket machine and tickets as evidence

- (1) If at any time while a vehicle is left in a parking place referred to in Schedules 1 and 2 during the permitted hours no ticket issued by a ticket machine relating to that parking place is displayed on that vehicle in accordance with the provisions of Article 8(1)(a) it shall be presumed unless the contrary is proved that the charge has not been duly paid.
- (2) If at any time while a vehicle is left in a parking place referred to in Schedules 1 and 2 during the permitted hours the ticket issued by a ticket machine relating to that parking place and displayed on the vehicle in accordance with the provisions of Article 8(1)(a) and the clock on the ticket machine by which such ticket was issued give the indication mentioned in Article 16(2), it shall be presumed unless the contrary is proved that the charge has been duly paid in respect of that vehicle, and that the period for which payment was made by the charge has already expired.
- (3) If at any time while a vehicle is left in a parking place referred to in Schedules 1 and 2 during the permitted hours the ticket issued by a ticket machine relating to that parking place and displayed on the vehicle in accordance with the provisions of Article 8(1)(a) and the clock on the ticket machine by which such ticket was issued give the indication mentioned in Article 16(3), that indication shall in any proceedings for a parking contravention under the Traffic Management Act 2004:
 - (a) of leaving a vehicle in that parking place for longer than after the penalty charge has been incurred than the time authorised by Article 14, be evidence that it was so left; and
 - (b) of failing to pay the penalty charge, be evidence that the charge was incurred.
- (4) Any ticket issued by a ticket machine relating to a parking place referred to in Schedules 1 and 2 shall be presumed unless the contrary is proved to have been issued on the day shown thereon when the clock on the ticket parking meter by which such ticket was issued indicated the expiry time shown on the said ticket less the period.

18. Indications and evidence by the telephone payment parking system

- (1) Where a vehicle has been left in a parking place referred to in Schedules 1 and 2 using the telephone payment parking system, an indication that payment has been made and the parking period for which payment has been made shall either:
 - (a) appear on a hand-held device; or
 - (b) be obtained by a civil enforcement officer contacting the service provider.
- (2) Without prejudice to the provisions of this Order, if at any time while a vehicle is left in a parking place referred to in the Schedule and no indication that payment of the parking charge has been made using the telephone payment parking system, or an indication that the parking period for which payment was made has expired, it shall be presumed, unless the contrary is proved, that either:
 - (a) the parking charge has not been duly paid in respect of that vehicle; or
 - (b) the parking period for which payment was made had already expired.

19. No tickets to be displayed other than those obtained on payment of the parking charge

- (1) No person shall display on a vehicle left in a parking place referred to in Schedules 1 and 2 during the permitted hours any ticket other than the ticket issued by the ticket machine relating to that parking place upon payment of the parking charge in respect of that vehicle.

20. Interval before a vehicle may again be left in a parking place

- (1) Without prejudice to the provisions of Article 22, no vehicle which has been taken away from a parking place during the permitted hours, after the charge has been incurred, shall until the expiration of one hour from the time it was taken away again be left in the parking place during the permitted hours.

21. Power to suspend the use of a parking place

- (1) A person duly authorised by the council or by the Commissioner of Police of the Metropolis may suspend the use of a parking place or any part thereof whenever they consider such suspension reasonably necessary:
 - (a) for the purpose of facilitating the movement of traffic or promoting its safety;
 - (b) for the purpose of any building operation, demolition or excavation adjacent to the parking place, the maintenance, improvement or reconstruction of the highway or the cleansing of gullies in or adjacent to the parking place, the laying, erection, alteration or repair in or adjacent to the parking place of any sewer or of any main, pipe or apparatus for the supply of gas, water or electricity or any telecommunication system or the placing, maintenance or removal of any traffic sign;
 - (c) for the convenience of occupiers of premises adjacent to the parking place on any occasion of the removal of furniture to or from one office or dwelling house adjacent to the parking place from or to a depository, another office or dwelling house;
 - (d) on any occasion on which it is likely by reason some special attraction that any street will be thronged or obstructed; or
 - (e) for the convenience of occupiers of premises adjacent to the parking place at times of weddings or funerals, or on other special occasions.
- (2) A police constable in uniform or traffic warden may suspend for not longer than twenty four hours the use of a parking place or any part thereof whenever they consider suspension reasonably necessary for the purposes of facilitating the movement of traffic or promoting its safety.
- (3) A duly authorised person suspending the use of a parking place or any part thereof in accordance with the provisions of paragraph (1), or as the case may be, paragraph (2) of this Article shall thereupon place or cause to be placed in or adjacent to any part of that parking place which is suspended a traffic sign of any size, colour and type prescribed or authorised under Section 64 of the Road Traffic Regulation Act 1984 indicating that waiting by vehicles is prohibited.
- (4) No person shall cause or permit a vehicle to wait in a parking place or part thereof during such period as there is in or adjacent to that part of the parking place a traffic sign placed in pursuance of paragraph (3) of this Article. Provided that nothing in this paragraph shall apply to:
 - (a) any vehicle being used for fire brigade, ambulance or police purposes or any vehicle which is waiting for any reason specified in Article 23(1) (c) (e) or (f); or
 - (b) anything done with the permission of the person suspending the use of the parking place or part thereof in pursuance of paragraph (1) of this Article.

22. Restriction on use of a parking place

- (1) No person shall use any parking place or any vehicle while it is in a parking place in connection with the sale or offering for sale of any goods to any person in or near the parking place or in connection with the selling or offering for sale of his skill in handicraft or his

services in any other capacity. Provided that nothing in this Article shall prevent the sale of goods from a vehicle:

- (a) if the goods are immediately delivered at or taken into premises adjacent to the vehicle from which the sale effected; or
- (b) if the vehicle is one to which provisions of Article 23(1)(i) apply.

23. Restriction on waiting by a vehicle in a parking place

- (1) Any vehicle may wait during the permitted hours anywhere in any part of a parking place if the use of that part has not been suspended and if the vehicle is waiting:
 - (a) for so long as is necessary to enable a person to board or alight from the vehicle and to load thereon or unload therefrom their personal luggage;
 - (b) for so long as is necessary to enable goods to be loaded onto the vehicle from premises adjacent to the parking place or unloaded from the vehicle to premises adjacent to the parking place;
 - (c) for so long as is necessary for postal packets to be collected from or delivered to premises or posting boxes adjacent to the parking place in which the vehicle is waiting;
 - (d) whilst being used for fire brigade, ambulance or police purposes or, not being a passenger vehicle, is being used in the service of a local authority in pursuance of statutory powers or duties provided that in all the circumstances it is reasonably necessary in the exercise of such powers or in the performance of such duties for the vehicle to wait in the place in which it is waiting;
 - (e) the vehicle is waiting only for so long as may be necessary to enable it to be used in connection with the removal of any obstruction to traffic;
 - (f) owing to the driver being prevented from proceeding by circumstances beyond his control or to such waiting being necessary in order to avoid an accident;
 - (g) the vehicle not being a passenger vehicle is waiting only for so long as may be reasonably necessary to enable it to be used for any purpose specified in Article 21(1)(b);
 - (h) the vehicle is in actual use in connection with the removal of furniture to or from one office or dwelling house adjacent to the parking place from or to a depository, another office or dwelling house; or
 - (i) in a parking place if goods are being sold or offered or exposed for sale from the vehicle by a person who is licensed by the Council to sell goods from a stationary vehicle on a pitch situated in a parking place.
- (2) No charge specified in the foregoing provisions of this Order shall be payable in respect of any vehicle waiting in a parking place in accordance with the foregoing provisions of this Article.
- (3) Nothing in the foregoing provisions of this Order shall be taken as authorising anything which would be a contravention of any Regulations made or having effect as if made under Section 25 of the Road Traffic Regulation Act 1984.

24. Manner of waiting in a parking place

- (1) Every vehicle waiting in a parking place by virtue of the provisions of Article 23(1) (c), (g), (h) or (i) shall stand so that every part of the vehicle is wholly within the limits of the parking place unless the width of the vehicle precludes compliance with this paragraph.
- (2) If the width of the vehicle does preclude compliance with paragraph (1) of this Article the vehicle waiting in the parking place shall stand so that the longitudinal axis of the vehicle is

parallel to the edge of the carriageway and the distance between the said edge and the nearest wheel of the vehicle is not more than 300 millimetres.

- (3) Every vehicle left in a parking place in relation to which special provisions as to the manner of standing of a vehicle in that parking place is specified in column 3 of Schedules 1 and 2 shall stand so that as to be in accordance with those provisions.

25. Placing of traffic signs etc.

- (1) The Council shall:
- (a) cause the limits of each parking place to be indicated by placing and maintaining traffic signs of any size, colour and type prescribed or authorised under Section 64 of the Road Traffic Regulation Act 1984; and
 - (b) carry out such other work as is reasonably required for the purpose of the satisfactory operation of a parking place.

Dated this sixth day of September 2021



Assistant Director Traffic, Transport & Parking
(the officer appointed for the purpose)

Schedule 1

In relation to a parking place referred to in this Schedule, the expression “permitted hours” means the period between 9am-3pm Monday to Friday and Saturday 9am-5.30pm, except for event days.

Parking places in respect of which a vehicle may be left during the permitted hours if it displays a valid parking ticket from a ticket machine – maximum stay 4 hours

1 No. of parking place	2 Designated parking place	3 Special manner of standing
1.	Capital Interchange Way, Brentford, the north-east side, from the north-western boundary of Brentford Fountain Leisure Centre, 658 Chiswick High Road to a point 10 metres south-east of the north-western building line of Citroen London West, Capital Interchange Way	-

Schedule 2

In relation to a parking place referred to in this Schedule, the expression “permitted hours” means the period between 9am-5.30pm Monday-Saturday, except for event days.

Parking places in respect of which a vehicle may be left during the permitted hours if it displays a valid parking ticket from a ticketing issuing machine – maximum stay 4 hour.

1 No. of parking place	2 Designated parking place	3 Special manner of standing
2.	Capital Interchange Way, Brentford, the south-east side, from a point 58 metres south-west of the north-easternmost building line of Citroen London West, Capital Interchange Way north-eastwards for a distance of 22 metres	-
3.	Capital Interchange Way, Brentford, the south-east side, from a point 18.5 metres south-west of the north-easternmost building line of Citroen London West, Capital Interchange Way to a point 9.5 metres north-east of the north-easternmost building line of Citroen London West, Capital Interchange Way	-
4.	Capital Interchange Way, Brentford, the south-east side, from a point 28 metres north-east of the north-easternmost building line of Citroen London West, Capital Interchange Way to a point 15.5 metres south-west of the south-westernmost building line of West London Volkswagen, Capital Interchange Way	-
5.	Capital Interchange Way, Brentford, the south-east side, from a point 10.5 metres south-west of the south-westernmost building line of West London Volkswagen, Capital Interchange Way north-eastwards for a distance of 24 metres	-

**Schedule 3
On-Street Pay & Display Parking Charges**

Period	Charges for zero emission vehicle*	Charges for low emission vehicle*	Charges for all other vehicles
Up to 30 minutes	£0.80	£1.20	£1.60
Up to 1 hour	£1.60	£2.40	£3.20
Up to 1½ hours	£2.40	£3.60	£4.80
Up to 2 hours	£3.20	£4.80	£6.40
Up to 2½ hours	£4.00	£6.00	£8.00
Up to 3 hours	£4.80	£7.20	£9.60
Up to 3½ hours	£5.60	£8.40	£11.20
Up to 4 hours	£6.40	£9.60	£12.80
Up to 4½ hours	£7.20	£10.80	£14.40
Up to 5 hours	£8.00	£12.00	£16.00

*reduced charges for zero or low emission vehicles are only available if making payment of the charge through the telephone payment parking system.

EXPLANATORY NOTE

(This note is not part of the Order, but is intended to indicate its general purport)

This Order designates parking places in Capital Interchange Way in the London Borough of Hounslow at which vehicles displaying a ticket or having made payment through the telephone payment system may be left in designated areas.

Capital Interchange Way & Brentford Community Stadium Event Day Parking Restrictions

- A. The London Borough of Hounslow (Capital Interchange Way) (Parking Places) Order 20****
- B. The London Borough of Hounslow (Waiting and Loading Restriction) (Amendment No.***) Order 20****
1. The London Borough of Hounslow proposes to make the above-mentioned Orders under sections 6, 45, 46, 49, 51 and 124 of the Road Traffic Regulation Act 1984.
 2. The general effect of the Orders would be to update the descriptions of the waiting and loading restrictions and parking places in Capital Interchange Way to include an “at any time” loading restriction and a restriction on waiting on days when events are being held at the Brentford Community Stadium and when the relevant signs are displayed.
 3. Documents giving further information of the proposed Orders can be viewed for a period of 21 days from the date of this Notice Online at hounslow.gov.uk by typing in the term “traffic notices” in the search bar.
 4. Any person wishing to object to the proposed Orders should send a statement in writing stating the grounds of the objection to the Assistant Director for Traffic, Transport & Parking, Hounslow Council, Hounslow House, 7 Bath Road, Hounslow, Middlesex TW3 3EB or by email to trafficorders@hounslow.gov.uk quoting the reference TMO/P018/21 to be received by no later than Wednesday, 11 August 2021.

Dated 21 July 2021

Jefferson Nwokeoma
Assistant Director for Traffic, Transport & Parking

Traffic Management Order

20** No. **

The London Borough of Hounslow (Capital Interchange Way) (Parking Places) Order 20**

Made on ** ***** 20**

Coming into operation on ** ***** 20**

ARRANGEMENT OF ARTICLES

PART I - PRELIMINARY

	Article
Citation and commencement	1
Revocations	2
Interpretation	3

PART II - DESIGNATION OF PARKING PLACES

	Article
Designation of parking places	4
Number and situation of parking bays and parking spaces	5
Manner of standing in a parking place	6
Vehicles for which parking places are designated	7
Display of permits and tickets	8
Charge for parking places	9
Payment of the charge at parking places with ticket machines	10
Exemption from charges	11
Contravention	12
Movement of a vehicle in a parking place in an emergency	13

PART III - SUPPLEMENTARY PROVISIONS

Period for which a vehicle may be left after the penalty charge has been incurred	14
Restriction on the removal of permits, tickets and notices	15

Indications by ticket machine and tickets	16
Indications by ticket machine and tickets as evidence	17
Indications and evidence by the telephone payment parking system	18
No tickets to be displayed other than those obtained on payment of the parking charge	19
Interval before a vehicle may again be left in a parking place	20
Power to suspend the use of a parking place	21
Restriction on the use of a parking place	22
Restriction on waiting by a vehicle in a parking place	23
Manner of waiting in a parking place	24
Installation of ticket parking meters, placing of traffic signs, etc	25

SCHEDULES

Schedule 1 - Pay & Display parking places (9am-3pm Monday-Saturday, except event days)

Schedule 2 - Pay & Display parking places (9am-5.30pm Monday-Saturday, except event days)

The Council of the London Borough of Hounslow, having consulted the Commissioner of Police of the Metropolis, in exercise of the powers conferred by sections 45, 46, 49 and 51 and 124 of and Part III and Part IV of Schedule 9 to the Road Traffic Regulation Act 1984^a as amended and the Traffic Management 2004^b and of all other enabling powers hereby make the following Order:

^a 1984 c.27

^b 2004 c.18

PART I - PRELIMINARY

1. Citation and Commencement

- (1) This Order may be cited as The London Borough of Hounslow (Capital Interchange Way) (Parking Places) Order 20** and shall come into operation for all purposes on ** ***** 20**.

2. Revocation

- (1) Without prejudice to the validity of anything done or to any liability incurred in respect of any act or omission before the coming into operation of this Order the following Orders are hereby revoked:
 - (a) The London Borough of Hounslow (Capital Interchange Way) (Parking Places) (No.1) Order 2009^a
 - (b) The London Borough of Hounslow (Capital Interchange Way) (Parking Places) (Amendment No.1) Order 2020^b

3. Interpretation

- (1) In this Order, except where the context otherwise requires, the following expressions have the meanings hereby respectively assigned to them:

"Band A or B vehicle" means a vehicle whose carbon dioxide emissions figure does not exceed 110 grams per kilometre driven.

"carbon dioxide emissions figure" has the same meaning as in the Vehicle Excise and Registration Act 1994b, as amended. For the avoidance of doubt, this is intended to have the same meaning as that used by DVLA for the purpose of vehicle excise duty at the time when this order was made. If there should be any future amendment to the meaning as used by DVLA, such amendment will not, of itself, be binding on the Council for the purposes of this order;

"civil enforcement officer" has the same meaning as in the Traffic Management Act 2004;

"Council" means the Council of the London Borough of Hounslow;

"diesel vehicle" means a vehicle in which the motive power is wholly or partially derived directly or indirectly from a compression ignition engine;

"disabled person" and "disabled person's badge" have the same meanings as in the Disabled Persons (Badges for Motor Vehicles) (England) Regulations 2000^c;

"disabled person's vehicle" has the same meaning as in the Local Authorities' Traffic Orders (Exemptions for Disabled Persons) (England and Wales) Regulations 2000^d;

"driver" in relation to a vehicle waiting in a parking place means the person driving the vehicle at the time it was left in the parking place;

^a LBH 2009/16

^b LBH 2020/30

^c SI.2000/882

^d SI.2000/683

“electric vehicle” means a vehicle in which the electrical motive power is derived from an electrical storage battery which is not connected to any source of power derived from fossil fuel when the vehicle is in motion.

"enactment" means any enactment, whether public, general or local, and includes any order, byelaw, rule, regulation, scheme or other instrument having effect by virtue of an enactment;

“event days” means the days when events are being held at the Brentford Community Stadium, Lionel Road South, Brentford, and when the relevant signs are displayed.

"goods" means goods of any kind whether animate or inanimate and includes postal packets of any description; and "delivering" and "collecting" in relation to any goods includes checking the goods for the purpose of their delivery or collection;

"goods vehicle" has the same meaning as in the The Traffic Signs Regulations and General Directions 2002^a;

“hand-held device” means a wireless hand-held computer used by a civil enforcement officer, which is programmed to interface with the telephone payment parking systems;

“location identification number” means the unique number assigned to the parking place where the telephone payment parking system is operational;

“low emission passenger vehicle” means a vehicle registered on or after 1 April 2017 whose carbon dioxide emissions figure does not exceed 75 grams per kilometre driven

“low emission goods vehicle” means a vehicle registered on or after 1 April 2017 whose carbon dioxide emissions figure does not exceed 100 grams per kilometre driven

“motor cycle and invalid carriage” have the same meaning respectively as in Section 136 of the Road Traffic Regulation Act 1984;

"owner", has the same meaning as in the Civil Enforcement of Parking Contraventions (England) General Regulations 2007^b;

“parking contravention” has the meaning as assigned to it in Part 1 of Schedule 7 of the Traffic Management Act 2004;

"parking place" means any area on a highway designated as such by this Order;

“parking space” means a space in a parking place referred to in Schedules 1, 2, 3, 4, 5, 6, 7 and 8 which is provided for the leaving of vehicles;

"passenger vehicle" means a motor vehicle (other than a motor cycle or invalid carriage) constructed or adapted solely for the carriage of not more than eight passengers (exclusive of the driver) and their effects and not drawing a trailer;

“penalty charge” has the same meaning as in the Civil Enforcement of Parking Contraventions (England) General Regulations 2007

^a SI.2002/3113

^b SI.2007/3483

“penalty charge and reduced penalty charge” means a charge set by the Council under the provisions of Part 6 of the Traffic Management 2004 and with the approval of the Secretary of State for Transport which is to be paid to the Council within 28 days beginning on the date of the Notice, or in 14 days in the case of a reduced penalty charge, following the issue of the penalty charge notice;

“penalty charge notice” has the same meaning as in the Civil Enforcement of Parking Contraventions (England) General Regulations 2007;

“permitted hours”, in relation to a parking place, means the period specified at the beginning of the Schedule relating to that parking place;

“service provider” means the company authorised and appointed by the Council to operate, administer and maintain the payment of parking charges using the telephone payment parking system;

“Schedule” means a Schedule to this Order;

“telephone payment parking system” means a system to facilitate and monitor the payment of parking charges using communication between the driver and the service provider by means of either telephone, text messaging, mobile application or web application;;

“ticket” means a ticket issued by a ticket machine relating to a parking place.

“ticket machine” means a type of parking meter as defined in regulation 46(2) (a) (i) of the Road Traffic Regulation Act 1984 for the purposes of this Order being apparatus designed to indicate the time and to issue tickets indicating the payment of the charge referred to in Article 9 of this Order and the period in respect of which the charge has been paid;

“user”, in relation to a vehicle, means the person by whom such a vehicle is kept and used;

“zero emission vehicle” means a vehicle registered on or after 1 April 2017 whose carbon dioxide emissions figure does not exceed 0 grams per kilometre driven.

- (2) Any reference in this Order to any enactment shall be construed as a reference to that enactment as amended, applied, consolidated, re-enacted by or as having effect by virtue of any subsequent amendment.
- (3) For the purposes of this Order a vehicle shall be regarded as displaying a disabled person's badge in the relevant position when it is so regarded for the purposes of Regulation 3 of the Local Authorities' Traffic Orders (Exemptions for Disabled Persons) (England and Wales) Regulations 2000^a.

PART II - DESIGNATION OF PARKING PLACES

4. Designation of parking places

- (1) The areas of highway as described in column 2 of Schedules 1 and 2 are designated as a parking places.

^a SI 2000/683

- (2) The limits of each parking place and the limits of each parking space, if marked within a parking place, shall be indicated on the highway by traffic signs of any size, colour and type prescribed or authorised under Section 64 of the Road Traffic Regulation Act 1984.

6. Manner of standing in a parking place

- (1) Every vehicle left in a parking place shall stand so that every part of the vehicle is wholly within the limits of any parking space if marked, or within the limits of any parking place.
- (2) Every vehicle left in a parking place in relation to which special provisions as to the manner of standing of a vehicle in that parking place is specified in column 3 of Schedules 1 and 2 shall stand so that as to be in accordance with those provisions.

7. Vehicles for which parking places are designated

- (1) Each parking place referred to in Schedules 1 and 2 may be used subject to the provisions of this Order for the leaving during the permitted hours of such vehicles as are passenger vehicles, goods vehicles or invalid carriages.
- (2) Subject to the provisions of this Order, a person leaving a vehicle in a parking place referred to in Schedules 1 and 2 during the permitted hours shall either:
 - (a) make payment through the telephone payment parking system; or
 - (b) cause to be displayed a valid ticket.

8. Display of permits and tickets

- (1) At all times during which a vehicle is left in a parking place during the permitted hours and where required to do so by Article 7, the driver shall cause either a valid ticket, issued for that vehicle, to be displayed on the front or kerb side of the vehicle so that all the details on the side of the ticket which bears the indication that the parking charge has been paid are clearly visible from the front or kerb side of the vehicle.

9. Charge for use of parking places

- (1) A charge shall be paid for the leaving of a vehicle in a parking place described in Schedules 1 and 2 during the permitted hours, such charge being as specified in Schedule 3.
- (2) No period for a vehicle left in a parking place referred to in Schedules 1 and 2 shall exceed the allocated time as stated in the permitted hours.

10. Payment of parking charge at parking places with ticket machines

- (1) A person leaving a vehicle in a parking place referred to in Schedules 1 and 2 can obtain a valid ticket by inserting the appropriate coins into the ticket machine, which shall be used as a means of collecting the parking charge imposed by this Order, and take such steps as may be necessary to cause the ticket machine to issue a ticket.
- (2) A person leaving a vehicle in a parking place referred to in Schedules 1 and 2 can use the telephone payment parking system to pay the parking charge, imposed by this Order, for the period they wish to park by communicating with the service provider.
- (3) In the case of only one of the methods of payment, as mentioned in paragraphs (1) and (2) of this Article, being available, that method shall be used for the payment of the parking charge.

11. Exemption from charges

- (1) Notwithstanding the foregoing provisions of this Order any disabled person's vehicle displaying in the relevant position a disabled person's badge may be left in any part of a parking place described in Schedules 1 and 2 if the use of that part has not been suspended.

12. Contravention

- (1) If a vehicle is left in a parking place without complying with the provisions of this Order, then a contravention of this Order, and a parking contravention within Part 1 of Schedule 7 to the Traffic Management Act 2004, shall be deemed to have occurred.
- (2) Where a vehicle is left in a parking place without complying with the provisions of this Order, the vehicle may be removed or caused to be removed from that parking place as provided for by Regulations made under section 99 of the Road Traffic Regulation Act 1984.

13. Movement of a vehicle in a parking place in an emergency

- (1) A police constable in uniform, a traffic warden or Civil Enforcement Officer may move or cause to be moved a vehicle from a parking place in an emergency.

PART III - SUPPLEMENTARY PROVISIONS

14. Period a vehicle may be left after the penalty charge has been incurred

- (1) The period for which a vehicle may be left in a parking place during the permitted hours after the penalty charge has been incurred shall not exceed one hour.

15. Restriction on the removal of tickets

- (1) Where a ticket has been displayed on a vehicle, no person, not being the driver of the vehicle, shall remove the ticket from the vehicle unless authorised to do so by the driver.

16. Indications by ticket machine and tickets

- (1) Payment of the charge for a vehicle left in a parking place referred to in Schedules 1 and 2 shall be indicated by the issue of a ticket by a ticket machine relating to that parking place indicating a charge paid in respect of the period in accordance with Schedule 3, the day and date of issue, the expiry date, and by the display of that ticket in the manner specified in Article 8(1)(a).
- (2) The expiry of the period for which payment was made by the charge for a vehicle left in a parking place referred to in Schedules 1 and 2 shall be indicated by the display on the vehicle in accordance with the provisions of Article 8(1)(a) of a ticket issued by a ticket machine relating to that parking place showing the day and date of issue, charge and expiry time of the charge, and the day so shown is not the day on which the vehicle is so left or the time shown on the clock on the said ticket machine is more than two minutes later than the time shown on the ticket.
- (3) The expiry of the period mentioned in Article 14 (being the period for which a vehicle may remain in a parking place after the penalty charge has been incurred) shall be indicated in the case of a vehicle left in a parking place referred to in Schedules 1 and 2 4 by the display

on the vehicle in accordance with the provisions of Article 8(1)(a) a ticket issued by a ticket machine relating to that parking place showing the day and date of issue, charge and expiry time of the charge, and the day so shown is not the day on which the vehicle is so left or the time shown on the clock on the said ticket parking meter is more than one hour later than the time shown on the ticket.

17. Indications by ticket machine and tickets as evidence

- (1) If at any time while a vehicle is left in a parking place referred to in Schedules 1 and 2 during the permitted hours no ticket issued by a ticket machine relating to that parking place is displayed on that vehicle in accordance with the provisions of Article 8(1)(a) it shall be presumed unless the contrary is proved that the charge has not been duly paid.
- (2) If at any time while a vehicle is left in a parking place referred to in Schedules 1 and 2 during the permitted hours the ticket issued by a ticket machine relating to that parking place and displayed on the vehicle in accordance with the provisions of Article 8(1)(a) and the clock on the ticket machine by which such ticket was issued give the indication mentioned in Article 16(2), it shall be presumed unless the contrary is proved that the charge has been duly paid in respect of that vehicle, and that the period for which payment was made by the charge has already expired.
- (3) If at any time while a vehicle is left in a parking place referred to in Schedules 1 and 2 during the permitted hours the ticket issued by a ticket machine relating to that parking place and displayed on the vehicle in accordance with the provisions of Article 8(1)(a) and the clock on the ticket machine by which such ticket was issued give the indication mentioned in Article 16(3), that indication shall in any proceedings for a parking contravention under the Traffic Management Act 2004:
 - (a) of leaving a vehicle in that parking place for longer than after the penalty charge has been incurred than the time authorised by Article 14, be evidence that it was so left; and
 - (b) of failing to pay the penalty charge, be evidence that the charge was incurred.
- (4) Any ticket issued by a ticket machine relating to a parking place referred to in Schedules 1 and 2 shall be presumed unless the contrary is proved to have been issued on the day shown thereon when the clock on the ticket parking meter by which such ticket was issued indicated the expiry time shown on the said ticket less the period.

18. Indications and evidence by the telephone payment parking system

- (1) Where a vehicle has been left in a parking place referred to in Schedules 1 and 2 using the telephone payment parking system, an indication that payment has been made and the parking period for which payment has been made shall either:
 - (a) appear on a hand-held device; or
 - (b) be obtained by a civil enforcement officer contacting the service provider.
- (2) Without prejudice to the provisions of this Order, if at any time while a vehicle is left in a parking place referred to in the Schedule and no indication that payment of the parking charge has been made using the telephone payment parking system, or an indication that the parking period for which payment was made has expired, it shall be presumed, unless the contrary is proved, that either:
 - (a) the parking charge has not been duly paid in respect of that vehicle; or
 - (b) the parking period for which payment was made had already expired.

19. No tickets to be displayed other than those obtained on payment of the parking charge

- (1) No person shall display on a vehicle left in a parking place referred to in Schedules 1 and 2 during the permitted hours any ticket other than the ticket issued by the ticket machine relating to that parking place upon payment of the parking charge in respect of that vehicle.

20. Interval before a vehicle may again be left in a parking place

- (1) Without prejudice to the provisions of Article 22, no vehicle which has been taken away from a parking place during the permitted hours, after the charge has been incurred, shall until the expiration of one hour from the time it was taken away again be left in the parking place during the permitted hours.

21. Power to suspend the use of a parking place

- (1) A person duly authorised by the council or by the Commissioner of Police of the Metropolis may suspend the use of a parking place or any part thereof whenever they consider such suspension reasonably necessary:
- (a) for the purpose of facilitating the movement of traffic or promoting its safety;
 - (b) for the purpose of any building operation, demolition or excavation adjacent to the parking place, the maintenance, improvement or reconstruction of the highway or the cleansing of gullies in or adjacent to the parking place, the laying, erection, alteration or repair in or adjacent to the parking place of any sewer or of any main, pipe or apparatus for the supply of gas, water or electricity or any telecommunication system or the placing, maintenance or removal of any traffic sign;
 - (c) for the convenience of occupiers of premises adjacent to the parking place on any occasion of the removal of furniture to or from one office or dwelling house adjacent to the parking place from or to a depository, another office or dwelling house;
 - (d) on any occasion on which it is likely by reason some special attraction that any street will be thronged or obstructed; or
 - (e) for the convenience of occupiers of premises adjacent to the parking place at times of weddings or funerals, or on other special occasions.
- (2) A police constable in uniform or traffic warden may suspend for not longer than twenty four hours the use of a parking place or any part thereof whenever they consider suspension reasonably necessary for the purposes of facilitating the movement of traffic or promoting its safety.
- (3) A duly authorised person suspending the use of a parking place or any part thereof in accordance with the provisions of paragraph (1), or as the case may be, paragraph (2) of this Article shall thereupon place or cause to be placed in or adjacent to any part of that parking place which is suspended a traffic sign of any size, colour and type prescribed or authorised under Section 64 of the Road Traffic Regulation Act 1984 indicating that waiting by vehicles is prohibited.
- (4) No person shall cause or permit a vehicle to wait in a parking place or part thereof during such period as there is in or adjacent to that part of the parking place a traffic sign placed in pursuance of paragraph (3) of this Article. Provided that nothing in this paragraph shall apply to:
- (a) any vehicle being used for fire brigade, ambulance or police purposes or any vehicle which is waiting for any reason specified in Article 23(1) (c) (e) or (f); or

- (b) anything done with the permission of the person suspending the use of the parking place or part thereof in pursuance of paragraph (1) of this Article.

22. Restriction on use of a parking place

- (1) No person shall use any parking place or any vehicle while it is in a parking place in connection with the sale or offering for sale of any goods to any person in or near the parking place or in connection with the selling or offering for sale of his skill in handicraft or his services in any other capacity. Provided that nothing in this Article shall prevent the sale of goods from a vehicle:
 - (a) if the goods are immediately delivered at or taken into premises adjacent to the vehicle from which the sale effected; or
 - (b) if the vehicle is one to which provisions of Article 23(1)(i) apply.

23. Restriction on waiting by a vehicle in a parking place

- (1) Any vehicle may wait during the permitted hours anywhere in any part of a parking place if the use of that part has not been suspended and if the vehicle is waiting:
 - (a) for so long as is necessary to enable a person to board or alight from the vehicle and to load thereon or unload therefrom their personal luggage;
 - (b) for so long as is necessary to enable goods to be loaded onto the vehicle from premises adjacent to the parking place or unloaded from the vehicle to premises adjacent to the parking place;
 - (c) for so long as is necessary for postal packets to be collected from or delivered to premises or posting boxes adjacent to the parking place in which the vehicle is waiting;
 - (d) whilst being used for fire brigade, ambulance or police purposes or, not being a passenger vehicle, is being used in the service of a local authority in pursuance of statutory powers or duties provided that in all the circumstances it is reasonably necessary in the exercise of such powers or in the performance of such duties for the vehicle to wait in the place in which it is waiting;
 - (e) the vehicle is waiting only for so long as may be necessary to enable it to be used in connection with the removal of any obstruction to traffic;
 - (f) owing to the driver being prevented from proceeding by circumstances beyond his control or to such waiting being necessary in order to avoid an accident;
 - (g) the vehicle not being a passenger vehicle is waiting only for so long as may be reasonably necessary to enable it to be used for any purpose specified in Article 21(1)(b);
 - (h) the vehicle is in actual use in connection with the removal of furniture to or from one office or dwelling house adjacent to the parking place from or to a depository, another office or dwelling house; or
 - (i) in a parking place if goods are being sold or offered or exposed for sale from the vehicle by a person who is licensed by the Council to sell goods from a stationary vehicle on a pitch situated in a parking place.
- (2) No charge specified in the foregoing provisions of this Order shall be payable in respect of any vehicle waiting in a parking place in accordance with the foregoing provisions of this Article.
- (3) Nothing in the foregoing provisions of this Order shall be taken as authorising anything which would be a contravention of any Regulations made or having effect as if made under Section 25 of the Road Traffic Regulation Act 1984.

24. Manner of waiting in a parking place

- (1) Every vehicle waiting in a parking place by virtue of the provisions of Article 23(1) (c), (g), (h) or (i) shall stand so that every part of the vehicle is wholly within the limits of the parking place unless the width of the vehicle precludes compliance with this paragraph.
- (2) If the width of the vehicle does preclude compliance with paragraph (1) of this Article the vehicle waiting in the parking place shall stand so that the longitudinal axis of the vehicle is parallel to the edge of the carriageway and the distance between the said edge and the nearest wheel of the vehicle is not more than 300 millimetres.
- (3) Every vehicle left in a parking place in relation to which special provisions as to the manner of standing of a vehicle in that parking place is specified in column 3 of Schedules 1 and 2 shall stand so that as to be in accordance with those provisions.

25. Placing of traffic signs etc.

- (1) The Council shall:
 - (a) cause the limits of each parking place to be indicated by placing and maintaining traffic signs of any size, colour and type prescribed or authorised under Section 64 of the Road Traffic Regulation Act 1984; and
 - (b) carry out such other work as is reasonably required for the purpose of the satisfactory operation of a parking place.

Dated this ***** day of ***** 20**.

Assistant Director Transport, Parking & Environmental Strategy
(the officer appointed for the purpose)

Schedule 1

In relation to a parking place referred to in this Schedule, the expression “permitted hours” means the period between 9am-3pm Monday to Friday and Saturday 9am-5.30pm, except for event days.

Parking places in respect of which a vehicle may be left during the permitted hours if it displays a valid parking ticket from a ticket machine – maximum stay 4 hours

1 No. of parking place	2 Designated parking place	3 Special manner of standing
1.	Capital Interchange Way, Brentford, the north-east side, from the north-western boundary of Brentford Fountain Leisure Centre, 658 Chiswick High Road to a point 10 metres south-east of the north-western building line of Citroen London West, Capital Interchange Way	-

Schedule 2

In relation to a parking place referred to in this Schedule, the expression “permitted hours” means the period between 9am-5.30pm Monday-Saturday, except for event days.

Parking places in respect of which a vehicle may be left during the permitted hours if it displays a valid parking ticket from a ticketing issuing machine – maximum stay 4 hour.

1 No. of parking place	2 Designated parking place	3 Special manner of standing
2.	Capital Interchange Way, Brentford, the south-east side, from a point 58 metres south-west of the north-easternmost building line of Citroen London West, Capital Interchange Way north-eastwards for a distance of 22 metres	-
3.	Capital Interchange Way, Brentford, the south-east side, from a point 18.5 metres south-west of the north-easternmost building line of Citroen London West, Capital Interchange Way to a point 9.5 metres north-east of the north-easternmost building line of Citroen London West, Capital Interchange Way	-
4.	Capital Interchange Way, Brentford, the south-east side, from a point 28 metres north-east of the north-easternmost building line of Citroen London West, Capital Interchange Way to a point 15.5 metres south-west of the south-westernmost building line of West London Volkswagen, Capital Interchange Way	-
5.	Capital Interchange Way, Brentford, the south-east side, from a point 10.5 metres south-west of the south-westernmost building line of West London Volkswagen, Capital Interchange Way north-eastwards for a distance of 24 metres	-

**Schedule 3
On-Street Pay & Display Parking Charges**

Period	Charges for zero emission vehicle*	Charges for low emission vehicle*	Charges for all other vehicles
Up to 30 minutes	£0.80	£1.20	£1.60
Up to 1 hour	£1.60	£2.40	£3.20
Up to 1½ hours	£2.40	£3.60	£4.80
Up to 2 hours	£3.20	£4.80	£6.40
Up to 2½ hours	£4.00	£6.00	£8.00
Up to 3 hours	£4.80	£7.20	£9.60
Up to 3½ hours	£5.60	£8.40	£11.20
Up to 4 hours	£6.40	£9.60	£12.80
Up to 4½ hours	£7.20	£10.80	£14.40
Up to 5 hours	£8.00	£12.00	£16.00

*reduced charges for zero or low emission vehicles are only available if making payment of the charge through the telephone payment parking system.

EXPLANATORY NOTE

(This note is not part of the Order, but is intended to indicate its general purport)

This Order designates parking places in Capital Interchange Way in the London Borough of Hounslow at which vehicles displaying a ticket or having made payment through the telephone payment system may be left in designated areas.

Traffic Management Order

20** No.**

The London Borough of Hounslow (Waiting and Loading Restriction) (Amendment No.***) Order 20**

Made on ** ***** 20**

Coming into operation on ** ***** 20**

The Council of the London Borough of Hounslow, after consulting the Commissioner of Police of the Metropolis, in exercise of the powers conferred by sections 6 and 124 to the Road Traffic Regulation Act 1984¹, as amended and of all other enabling powers hereby make the following Order:

- 1 This Order shall come into operation on ** ***** 20** and may be cited as the London Borough of Hounslow (Waiting and Loading Restriction) (Amendment No.***) Order 20**.
- 2 Without prejudice to the validity of anything done or to any liability incurred in respect of any act of omission before the coming into operation of this Order, The Hounslow (Waiting and Loading Restriction) Order 2008² shall have effect as though:
 - a) in Article 3 there were added the following definitions:

“Brentford Community Stadium Event Day” means any such day when an event is taking place at Brentford Community Stadium, Lionel Road South, Brentford;

“authorised person” means a person authorised by the Council, a police community support officer, an accredited person, where:

 - i) “police community support officer” means a person who has been so designated by the Metropolitan Police Service as provided for by Section 38 of the Police Reform Act 2002³, and
 - ii) “accredited person” means a person who has been accredited by the Metropolitan Police Service under the Community Safety Accreditation Scheme as provided for by Section 41 of that Act;

and in either case whilst exercising the powers of a police community support officer or an accredited person that person is wearing an approved uniform as provided for by Section 42(2) of that Act;
 - (a) the item numbered 110 in Schedule 1 to that Order were substituted with the item similarly numbered and set out in the Schedule 1 to this Order;
 - (b) there were added to Schedule 2 to that Order the items numbered 223 in Schedule 2 to this Order; and
 - (c) Schedule 3 to that Order was substituted with Schedule 3 to this Order.

¹ 1984 c.27

² 2008/24

³ 2002 c.30

Dated this ***** day of ***** 20**

Assistant Director of Traffic, Transport & Parking
Jefferson Nwokeoma

Schedule 1

1 Item Number	2 Street	3 Prescribed hours
110	<p>Capital Interchange Way, Brentford, Hounslow</p> <p>(a) north-west & south-west side,</p> <p style="padding-left: 20px;">(i) from a point 38 south-east of the north-western boundary of Brentford Fountain Leisure Centre, 658 Chiswick High Road to a point 34.5 metres north-east of the south-westernmost building line of West London Volkswagen, Capital Interchange Way</p> <p>(b) north-east side,</p> <p style="padding-left: 20px;">(i) from the north-western boundary of Brentford Fountain Leisure Centre, 658 Chiswick High Road south-eastwards for a distance of 38 metres</p> <p style="padding-left: 20px;">(ii) from the north-western boundary of Brentford Fountain Leisure Centre, 658 Chiswick High Road to a point 10 metres south-east of the north-western building line of Citroen London West, Capital Interchange Way</p> <p>(c) north-east & south-east side,</p> <p style="padding-left: 20px;">(i) from a point 10 metres south-east of the north-western building line of Citroen London West, Capital Interchange Way to a point 58 metres south-west of the north-easternmost building line of Citroen London West, Capital Interchange Way</p> <p>(d) south-east side,</p> <p style="padding-left: 20px;">(i) from a point 58 metres south-west of the north-easternmost building line of Citroen London West, Capital Interchange Way north-eastwards for a distance of 22 metres</p> <p style="padding-left: 20px;">(ii) from a point 36 metres south-west of the north-easternmost building line of Citroen London West, Capital Interchange Way north-eastwards for a distance of 17.5 metres</p> <p style="padding-left: 20px;">(iii) from a point 18.5 metres south-west of the north-easternmost building line of Citroen London West, Capital Interchange Way to a point 9.5 metres north-east of the north-easternmost building line of Citroen London West, Capital Interchange Way</p>	<p style="text-align: center;">A</p> <p style="text-align: center;">A</p> <p style="text-align: center;">SSS</p> <p style="text-align: center;">A</p> <p style="text-align: center;">RRR</p> <p style="text-align: center;">A</p> <p style="text-align: center;">RRR</p>

Schedule 1 (continued)

1 Item Number	2 Street	3 Prescribed hours
	<p>Capital Interchange Way, Brentford, Hounslow (continued)</p> <p>(iv) from a point 9.5 metres north-east of the north-easternmost building line of Citroen London West, Capital Interchange Way north-eastwards for a distance of 18.5 metres</p> <p>(v) from a point 28 metres north-east of the north-easternmost building line of Citroen London West, Capital Interchange Way to a point 15.5 metres south-west of the south-westernmost building line of West London Volkswagen, Capital Interchange Way</p> <p>(vi) from a point 15.5 metres south-west of the south-westernmost building line of West London Volkswagen, Capital Interchange Way north-eastwards for a distance of 26 metres</p> <p>(vii) from a point 10.5 metres south-west of the south-westernmost building line of West London Volkswagen, Capital Interchange Way north-eastwards for a distance of 24 metres</p>	<p>A</p> <p>RRR</p> <p>A</p> <p>RRR</p>

Schedule 2

1	2	3
Item Number	Street	Restricted hours
223	<p>Capital Interchange Way, Brentford, Hounslow</p> <p>(a) north-west & south-west side,</p> <p style="padding-left: 20px;">(i) from a point 34.5 metres north-east of the south-westernmost building line of West London Volkswagen, Capital Interchange Way to a point 38 south-east of the north-western boundary of Brentford Fountain Leisure Centre, 658 Chiswick High Road</p> <p>(b) north-east side,</p> <p style="padding-left: 20px;">(i) from the north-western boundary of Brentford Fountain Leisure Centre, 658 Chiswick High Road south-eastwards for a distance of 38 metres</p> <p>(c) north-east & south-east side,</p> <p style="padding-left: 20px;">(i) from a point 10 metres south-east of the north-western building line of Citroen London West, Capital Interchange Way to a point 58 metres south-west of the north-easternmost building line of Citroen London West, Capital Interchange Way</p> <p>(d) south-east side,</p> <p style="padding-left: 20px;">(i) from a point 36 metres south-west of the north-easternmost building line of Citroen London West, Capital Interchange Way north-eastwards for a distance of 17.5 metres</p> <p style="padding-left: 20px;">(ii) from a point 9.5 metres north-east of the north-easternmost building line of Citroen London West, Capital Interchange Way north-eastwards for a distance of 18.5 metres</p> <p style="padding-left: 20px;">(iii) from a point 15.5 metres south-west of the south-westernmost building line of West London Volkswagen, Capital Interchange Way north-eastwards for a distance of 26 metres</p>	<p>1</p> <p>1</p> <p>1</p> <p>1</p> <p>1</p> <p>1</p>

Schedule 3

New schedule required.

EXPLANATORY NOTE

(This Note is not part of the Order, but is intended to indicate its general purport.)

This Order further amends the Hounslow (Waiting and Loading Restriction) Order 2008 so that the restrictions imposed by that Order on vehicles with regard to waiting and loading in Capital Interchange Way, Brentford.



**London Borough
of Hounslow**

STATEMENT OF REASONS

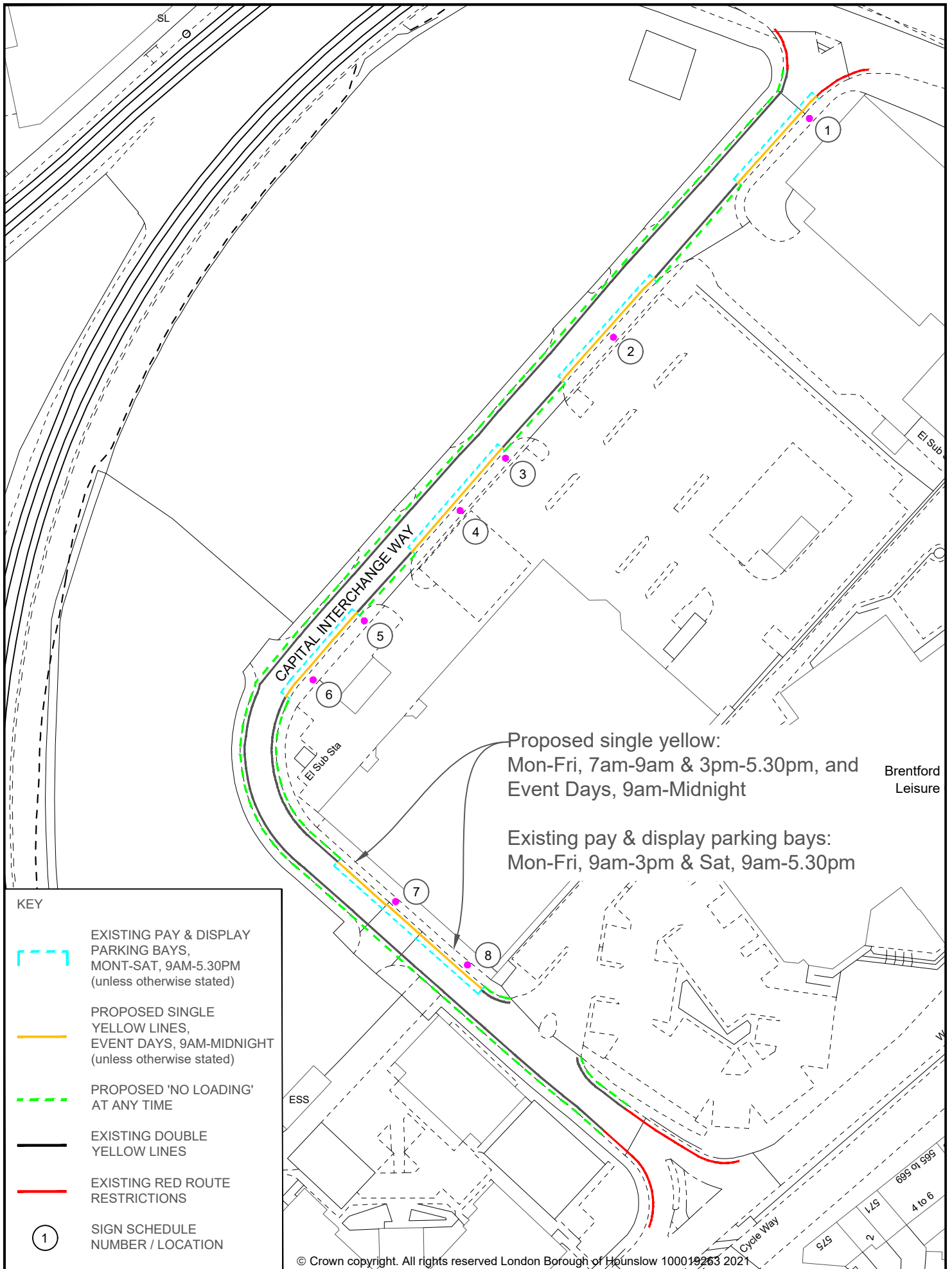
Capital Interchange Way & Brentford Community Stadium Event Day Parking Restrictions

As part of the Brentford Community Stadium event day plans approval has been given for coaches connected to the event to be parked on Capital Interchange way on event days. Therefore the existing traffic management orders need to be changed and updated to reflect this.

A new parking places order will enable the council to better manage the suspension of the parking places on event days and provide clearer signage for motorists as to when the event day restriction applies.

The council is also proposing to introduce a loading restriction in Capital Interchange Way to keep the carriageway free from obstructive loading and unloading. Loading and unloading can continue to be undertaken for free in any of the parking places except on event days.

Commented [AN1]: My plan indicates no loading AAT



Proposed single yellow:
 Mon-Fri, 7am-9am & 3pm-5.30pm, and
 Event Days, 9am-Midnight

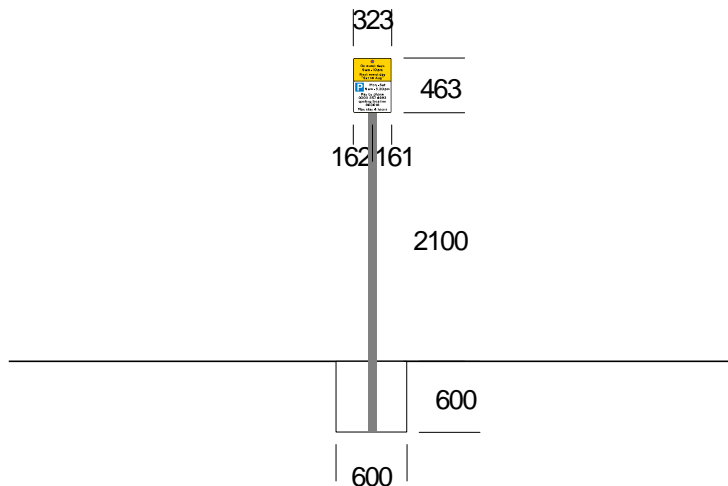
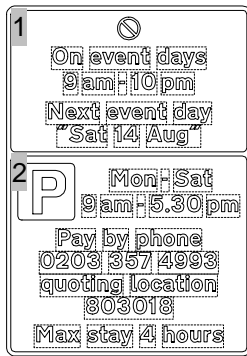
Brentford
 Leisure

Existing pay & display parking bays:
 Mon-Fri, 9am-3pm & Sat, 9am-5.30pm

KEY	
	EXISTING PAY & DISPLAY PARKING BAYS, MONT-SAT, 9AM-5.30PM (unless otherwise stated)
	PROPOSED SINGLE YELLOW LINES, EVENT DAYS, 9AM-MIDNIGHT (unless otherwise stated)
	PROPOSED 'NO LOADING' AT ANY TIME
	EXISTING DOUBLE YELLOW LINES
	EXISTING RED ROUTE RESTRICTIONS
	SIGN SCHEDULE NUMBER / LOCATION

© Crown copyright. All rights reserved London Borough of Hounslow 100010263 2021

Drawing Status		PROPOSED			Project		CAPITAL INTERCHANGE WAY, BRENTFORD		Jefferson Nwokeoma Assistant Director Transport & Parking Hounslow House, 7 Bath Road, Hounslow, TW3 3EB	
Drawn	Approved	Date	Scale	Size	Drawing Title		Client			
AN	CD	JULY-2021	1:1000	A4	PROPOSED EVENT DAY WAITING RESTRICTIONS					
Rev	Date	Description	Dwg No	Rev						



Foundation length: 800
Not to scale

Scale 1:10
Dimensions (mm):
Width: 323, Height: 463
x-Height: 15
Area: 0.15 m²

Colours:
1 black on yellow
2 black on white

Material: BS EN 12899-1:2007
class: RA2/R2

Sign 1 - CIW

Structure Details:
1 no. Steel circular section S275:
76.1mm O.D. 3mm thick
Support length: 3163 mm
Passively safe to BS EN 12767:2019
BS EN 12899-1:2007 classes:
WL6, TDB5, PL3, PAF1

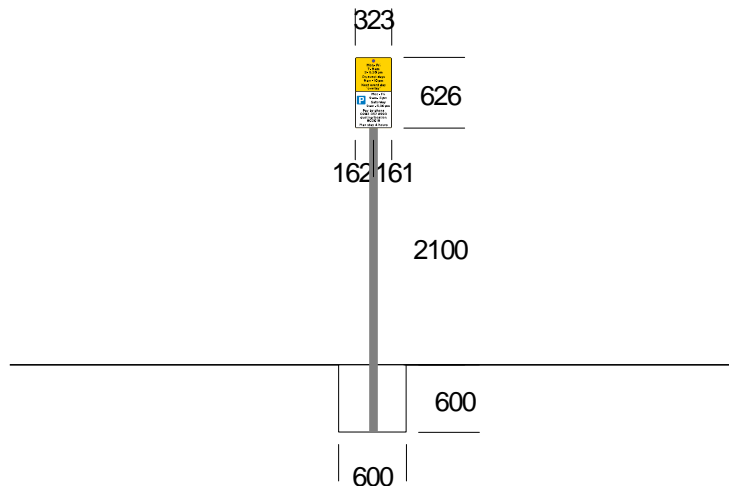
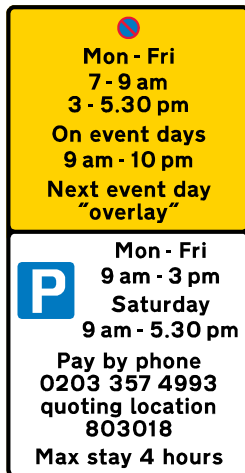
Single spread foundation to BS EN 1997-1:

Soil type: poor or unknown
(bearing pressure: 100 kN/m²)
Height of footing: 600 mm
Width of footing: 600 mm
Length of footing: 800 mm

Date printed: 18-06-21

SignPlot v3.70

London Borough of Hounslow



Foundation length: 800
Not to scale

Scale 1:10
Dimensions (mm):
Width: 324, Height: 626
x-Height: 15
Area: 0.20 m²

Colours:
1 black on yellow
2 black on white

Material: BS EN 12899-1:2007
class: RA2/R2

Sign 2 - CIW

Structure Details:
1 no. Steel circular section S275:
76.1mm O.D. 3mm thick
Support length: 3326 mm
Passively safe to BS EN 12767:2019
BS EN 12899-1:2007 classes:
WL6, TDB5, PL3, PAF1

Single spread foundation to BS EN 1997-1:

Soil type: poor or unknown
(bearing pressure: 100 kN/m²)
Height of footing: 600 mm
Width of footing: 600 mm
Length of footing: 800 mm

Date printed: 18-06-21

SignPlot v3.70

London Borough of Hounslow

Capital Interchange Way Event Day Controls - Sign Schedule

Schedule Number	Signpost / Column Location	Post / Lamp Column	Sign Type	Details
1	Capital Interchange Way j/w A4	Lamp column	Sign 1 - CIW	Replace existing P&D plate with combined 'no waiting' & 'P&D' plate
2	Outside 'Robins & Day' Used Vehicles Site, Capital Interchange Way	Lamp column	Sign 1 - CIW	Replace existing P&D plate with combined 'no waiting' & 'P&D' plate. Relocate '5t' plate to location 5
3	Outside 'Peugeot' Garage, Capital Interchange Way	Lamp column	N/A	Remove existing P&D plate
4	Outside 'Peugeot' Garage, Capital Interchange Way	Steel circular section S275: 76.1mm O.D. 3mm thick Support length: 3163mm	Sign 1 - CIW	Install new post (back of footway) at centre of bays and combined 'no waiting' & 'P&D' plate
5	Outside garage workspace adjacent to 'Peugeot' Garage, Capital Interchange Way	Lamp column	N/A	Remove existing P&D plate
6	Outside garage workspace adjacent to 'Peugeot' Garage, Capital Interchange Way	Lamp column	Sign 1 - CIW	Install combined 'no waiting' & 'P&D' plate
7	Opposite development site access road, Capital Interchange Way	Lamp column	Sign 2 - CIW	Replace existing PHOFTP sign with new PHOFTP sign
8	Opposite school access road, Capital Interchange Way	Steel circular section S275: 76.1mm O.D. 3mm thick Support length: 3326mm	Sign 2 - CIW	Install new post (back of footway) and combined 'no waiting' & 'P&D' plate

Traffic Management Order

2009 No.16

The London Borough of Hounslow (Capital Interchange Way) (Parking Places) (No.1) Order
2009

Made on 15 June 2009

Coming into operation on 22 June 2009

ARRANGEMENT OF ARTICLES

PART I - PRELIMINARY	Article
Citation and commencement	1
Revocations	2
Interpretation	3
PART II - DESIGNATION OF PARKING PLACES	Article
Designation of parking places	4
Number and situation of parking bays and parking spaces	5
Manner of standing in a parking place	6
Vehicles for which parking places are designated	7
Display of permits and tickets	8
Charge for parking places	9
Payment of the charge at parking places with ticket machines	10
Exemption from charges	11
Contravention	12
Movement of a vehicle in a parking place in an emergency	13
PART III - SUPPLEMENTARY PROVISIONS	
Section 1 – General	Article
Period for which a vehicle may be left after the penalty charge has been incurred	14

Restriction on the removal of permits, tickets and notices	15
Indications by ticket machine and tickets	16
Indications by ticket machine and tickets as evidence	17
Indications and evidence by the telephone payment parking system	18
No tickets to be displayed other than those obtained on payment of the parking charge	19
Interval before a vehicle may again be left in a parking place	20
Power to suspend the use of a parking place	21
Restriction on the use of a parking place	22
Restriction on waiting by a vehicle in a parking place	23
Manner of waiting in a parking place	24
Installation of ticket parking meters, placing of traffic signs, etc	25
Section 2 - Permits	
Application for and issue of residents' permits for the use of parking places	26
Refund of charge paid in respect of residents' permit	27
Application for and issue of business permits for the use of parking places	28
Refund of charge in respect of business permits	29
Surrender, withdrawal and validity of permits	30
Application for and issue of duplicate permits	31
Form of permits	32
Section 3 - Residents' Visitor Parking Cards	
Application for and issue of residents' visitor parking cards for the use of parking places	33
Refund of charge paid in respect of a residents' visitor parking card	34
Surrender, withdrawal and validity of residents' visitor parking card	35
Application for the issue of replacement residents' visitor parking cards	36
Form of residents' visitor parking cards	37

SCHEDULES

Schedule 1 - Pay & Display parking places

Schedule 2 - Pay & Display and Business Permit parking places

Schedule 3 - Pay & Display, Resident Permit and Residents' Visitor Parking Card parking places

Schedule 4 - Pay & Display, Business Permit, Resident Permit and Residents' Visitor Parking Card parking places

Schedule 5 - Business Permit parking places

Schedule 6 - Business Permit, Resident Permit and Residents' Visitor Parking Card parking places

Schedule 7 - Resident Permit and Residents' Visitor Parking Card parking places

Schedule 8 - Resident Permit parking places

Schedule 9 - Streets or parts of streets for the purpose of the definition of business user

Schedule 10 - Streets or parts of streets for the purpose of the definition of resident

Schedule 11 – On-Street Pay & Display parking charges

Schedule 12 - Business Permit charges

Schedule 13 - Resident Permit charges

The Council of the London Borough of Hounslow, having consulted the Commissioner of Police of the Metropolis, in exercise of the powers conferred by sections 45, 46, 49 and 51 and 124 of and Part III and Part IV of Schedule 9 to the Road Traffic Regulation Act 1984^a as amended and the Traffic Management 2004^b and of all other enabling powers hereby make the following Order:

^a 1984 c.27

^b 2004 c.18

PART I - PRELIMINARY

1. Citation and Commencement

- (1) This Order may be cited as The London Borough of Hounslow (Capital Interchange Way) (Parking Places) (No.1) Order 2009 and shall come into operation for all purposes on 22 June 2009.

2. Revocation

- (1) Without prejudice to the validity of anything done or to any liability incurred in respect of any act or omission before the coming into operation of this Order the following Orders are hereby revoked:
 - (a) The London Borough of Hounslow (Parking Places) (No.2) Order 1997

3. Interpretation

- (1) In this Order, except where the context otherwise requires, the following expressions have the meanings hereby respectively assigned to them:

"business permit" means a business permit issued under the provisions of Article 27;

"business user" means a person who occupies premises the postal address of which is in any street or part of street described in Schedule 9 and who uses such premises for non-residential purposes;

"civil enforcement officer" has the same meaning as in the Traffic Management Act 2004;

"Council" means the Council of the London Borough of Hounslow;

"disabled person" and "disabled person's badge" have the same meanings as in the Disabled Persons (Badges for Motor Vehicles) (England) Regulations 2000^a;

"disabled person's vehicle" has the same meaning as in the Local Authorities' Traffic Orders (Exemptions for Disabled Persons) (England and Wales) Regulations 2000^b;

"driver" in relation to a vehicle waiting in a parking place means the person driving the vehicle at the time it was left in the parking place;

"enactment" means any enactment, whether public, general or local, and includes any order, byelaw, rule, regulation, scheme or other instrument having effect by virtue of an enactment;

"goods" means goods of any kind whether animate or inanimate and includes postal packets of any description; and "delivering" and "collecting" in relation to any goods includes checking the goods for the purpose of their delivery or collection;

"goods carrying vehicle" means a motor vehicle constructed or adapted for use for the carriage of goods or burden of any description and not drawing a trailer;

^a SI.2000/882

^b SI.2000/683

"hand-held device" means a wireless hand-held computer used by a civil enforcement officer, which is programmed to interface with the telephone payment parking systems;

"householder" means either one person living alone or a group of people (who may or may not be related) living or staying at the same address with common housekeeping and who is a resident for the purposes of this Order;

"location identification number" means the unique number assigned to the parking place where the telephone payment parking system is operational;

"motor cycle and invalid carriage" have the same meaning respectively as in Section 136 of the Road Traffic Regulation Act 1984;

"owner", has the same meaning as in the Civil Enforcement of Parking Contraventions (England) General Regulations 2007^a;

"parking contravention" has the meaning as assigned to it in Part 1 of Schedule 7 of the Traffic Management Act 2004;

"parking place" means any area on a highway designated as such by this Order;

"parking space" means a space in a parking place referred to in Schedules 1, 2, 3, 4, 5, 6, 7 and 8 which is provided for the leaving of vehicles;

"passenger vehicle" means a motor vehicle (other than a motor cycle or invalid carriage) constructed or adapted solely for the carriage of not more than eight passengers (exclusive of the driver) and their effects and not drawing a trailer;

"penalty charge" has the same meaning as in the Civil Enforcement of Parking Contraventions (England) General Regulations 2007

"penalty charge and reduced penalty charge" means a charge set by the Council under the provisions of Part 6 of the Traffic Management 2004 and with the approval of the Secretary of State for Transport which is to be paid to the Council within 28 days beginning on the date of the Notice, or in 14 days in the case of a reduced penalty charge, following the issue of the penalty charge notice;

"penalty charge notice" has the same meaning as in the Civil Enforcement of Parking Contraventions (England) General Regulations 2007;

"permitted hours", in relation to a parking place, means the period specified at the beginning of the Schedule relating to that parking place;

"protective cover" means the protective cover issued by the Council under the provisions of Article 25 or Article 27 of this Order;

"resident" means a person whose usual place of abode is at the premises the postal address of which is in any street or part of a street described in Schedule 10;

"residents' permit" means a residents' permit issued under the provisions of Article 25;

^a SI.2007/3483

"residents' permit holder" means a person to whom a residents' permit has been issued under the provisions of Article 25;

"residents' visitor parking card" means a residents' visitor parking card issued under the provisions of Article 32;

"service provider" means the company authorised and appointed by the Council to operate, administer and maintain the payment of parking charges using the telephone payment parking system;

"service charge" means any charge which may be payable to the service provider (in addition to the parking charge in accordance with the provisions of Article 8) for vehicles using the telephone payment parking system;

"Schedule" means a Schedule to this Order;

"telecommunications system" has the same meaning as in the Telecommunications Act 1984^a;

"telephone payment parking system" means a system to facilitate and monitor the payment of parking charges using telephone communication with the service provider in accordance with instructions indicated on signs located at each parking place where the system is operational;

"ticket" means a ticket issued by a ticket machine relating to a parking place.

"ticket machine" means a type of parking meter as defined in regulation 46(2) (a) (i) of the Road Traffic Regulation Act 1984 for the purposes of this Order being apparatus designed to indicate the time and to issue tickets indicating the payment of the charge referred to in Article 8 of this Order and the period in respect of which the charge has been paid;

"user", in relation to a vehicle, means the person by whom such a vehicle is kept and used;

"valid residents' visitor parking card" means a residents' visitor parking card validated by entering the following indications by or on behalf of the driver:

- (a) the registration mark of the vehicle;
- (b) the month and the date in the month;
- (c) the time of arrival.

- (2) Any reference in this Order to any enactment shall be construed as a reference to that enactment as amended, applied, consolidated, re-enacted by or as having effect by virtue of any subsequent amendment.
- (3) For the purposes of this Order a vehicle shall be regarded as displaying a disabled person's badge in the relevant position when it is so regarded for the purposes of Regulation 3 of the Local Authorities' Traffic Orders (Exemptions for Disabled Persons) (England and Wales) Regulations 2000^b.

^a 1984 c.12

^b SI 2000/683

PART II - DESIGNATION OF PARKING PLACES

4. Designation of parking places

- (1) The areas of highway as described in column 2 of Schedules 1, 2, 3, 4, 5, 6, 7 and 8 are designated as a parking places.
- (2) The limits of each parking place and the limits of each parking space within a parking place shall be indicated on the highway in accordance with the Traffic Signs Regulations and General Directions 2002^a.

5. Number and situation of parking spaces

- (1) The number of parking spaces in each parking place shall not be less than the number specified in relation to that parking place in column 3 of Schedules 1, 2, 3, 4, 5, 6, 7 and 8.
- (2) The number and situation of parking spaces in each parking place shall be determined by the Council.

6. Manner of standing in a parking place

- (1) Every vehicle left in a parking place shall stand so that every part of the vehicle is wholly within the limits of any parking space or parking place.
- (2) Every vehicle left in a parking place in relation to which special provisions as to the manner of standing of a vehicle in that parking place is specified in column 5 of Schedules 2, 3, 4, 5, 6, 7 and 8 shall stand so that as to be in accordance with those provisions.

7. Vehicles for which parking places are designated

- (1) Each parking place referred to in Schedules 1, 2, 3, 4, 5, 6, 7 and 8 may be used subject to the provisions of this Order for the leaving during the permitted hours of such vehicles as are passenger vehicles, goods carrying vehicles, motor cycles, or invalid carriages.
- (2) Subject to the provisions of this Order, a person leaving a vehicle in a parking place referred to in Schedule 1 during the permitted hours shall either:
 - (a) use the telephone payment parking system; or
 - (b) cause to be displayed a valid ticket.
- (3) Subject to the provisions of this Order, a person leaving a vehicle in a parking place referred to in Schedule 2 during the permitted hours shall either:
 - (a) make payment through the telephone payment parking system; or
 - (b) cause to be displayed a valid ticket; or
 - (c) cause to be displayed a valid business permit.
- (4) Subject to the provisions of this Order, a person leaving a vehicle in a parking place referred to in Schedule 3 during the permitted hours shall either:
 - (a) make payment through the telephone payment parking system; or
 - (b) cause to be displayed a valid ticket; or
 - (c) cause to be displayed a valid residents' permit; or

^a SI 2002/3113

- (d) cause to be displayed a valid residents' visitors parking card.
- (5) Subject to the provisions of this Order, a person leaving a vehicle in a parking place referred to in Schedule 4 during the permitted hours shall either:
 - (a) make payment through the telephone payment parking system; or
 - (b) cause to be displayed a valid ticket; or
 - (c) cause to be displayed a valid business permit; or
 - (d) cause to be displayed a valid residents' permit; or
 - (e) cause to be displayed a valid residents' visitors parking card.
- (6) Subject to the provisions of this Order, a person leaving a vehicle in a parking place referred to in Schedule 5 during the permitted hours shall cause to be displayed a valid business permit.
- (7) Subject to the provisions of this Order, a person leaving a vehicle in a parking place referred to in Schedule 6 during the permitted hours shall either:
 - (a) cause to be displayed a valid business permit;
 - (b) cause to be displayed a valid residents' permit; or
 - (c) cause to be displayed a valid residents' visitors parking card
- (8) Subject to the provisions of this Order, a person leaving a vehicle in a parking place referred to in Schedule 7 during the permitted hours shall either:
 - (a) cause to be displayed a valid residents' permit; or
 - (b) cause to be displayed a valid residents' visitors parking card
- (9) Subject to the provisions of this Order, a person leaving a vehicle in a parking place referred to in Schedule 8 during the permitted hours shall cause to be displayed a valid residents' permit.

8. Display of permits and tickets

- (1) At all times during which a vehicle is left in a parking place during the permitted hours and where required to do so by Article 6, the driver shall cause either a valid ticket, a valid permit, or a valid residents' visitor parking card, issued for that vehicle, to be displayed on the front or kerb side of the vehicle so that either:
 - (a) all the details on the side of the ticket which bears the indication that the parking charge has been paid are clearly visible from the front or kerb side of the vehicle; or
 - (b) all of the particulars of the residents' permit referred to in Article 28(1) are clearly visible from the front or kerb side of the vehicle; or
 - (c) all of the particulars of the business permit referred to in Article 28(2) are clearly visible from the front or kerb side of the vehicle; or
 - (d) all of the particulars of the visitor parking card referred to in Article 34(1) are clearly visible from the front or kerb side of the vehicle and have been duly completed.

9. Charge for use of parking places

- (1) A charge shall be paid for the leaving of a vehicle in a parking place described in Schedule 1 during the permitted hours, such charge being as specified in Schedule 11.
- (2) A charge shall be paid for the leaving of a vehicle in a parking place described in Schedules 2, 3 and 4 during the permitted hours, such charge being either:

- (a) as specified in Schedule 11; or
 - (b) a business permit fee as specified in Schedule 12; or
 - (c) a residents' permit fee as specified in Schedule 13; or
 - (d) a residents' visitors parking card fee as specified in Schedule 14.
- (3) A charge shall be paid for the leaving of a vehicle in a parking place described in Schedules 5, 6 7 and 8 during the permitted hours, such charge being either:
- (a) a business permit fee as specified in Schedule 12; or
 - (b) a residents' permit fee as specified in Schedule 13; or
 - (c) a residents' visitors parking card fee as specified in Schedule 14.
- (4) For users of the telephone payment system the parking charge will be the same as specified in Schedule 11 plus the payment of an additional twenty (20) pence convenience fee.
- (5) No period for a vehicle left in a parking place referred to in Schedule 1, 2, 3 and 4 shall exceed the allocated time as stated in the permitted hours.

10. Payment of parking charge at parking places with ticket machines

- (1) A person leaving a vehicle in a parking place referred to in Schedules 1, 2, 3 and 4, can obtain a valid ticket by inserting the appropriate coins into the ticket machine, which shall be used as a means of collecting the parking charge imposed by this Order, and take such steps as may be necessary to cause the ticket machine to issue a ticket (such as press a button to confirm that they have paid the charge for the period they wish to park).
- (2) A person leaving a vehicle in a parking place referred to in Schedules 1, 2, 3 and 4, can use the telephone payment parking system to pay the parking charge, imposed by this Order, for the period they wish to park by making telephone communication with the service provider in accordance with instructions indicated on signs located at the parking place.
- (3) In the case of only one of the methods of payment, as mentioned in paragraphs (1) and (2) of this Article, being available, that method shall be used for the payment of the parking charge.

11. Exemption from charges

- (1) Notwithstanding the foregoing provisions of this Order any disabled person's vehicle displaying in the relevant position a disabled person's badge may be left in any part of a parking place if the use of that part has not been suspended.

12. Contravention

- (1) If a vehicle is left in a parking place at any time during the permitted hours without complying with the provisions of this Order, then a contravention of this Order and a parking contravention within Part 1 of Schedule 7 to the Traffic Management Act 2004, shall deemed to have occurred.
- (2) Where a vehicle is left in a parking place without complying with the provisions of this Order, the vehicle may be removed or caused to be removed from that parking place as

provided for by Regulations made under section 99 of the Road Traffic Regulation Act 1984.

13. Movement of a vehicle in a parking place in an emergency

- (1) A police constable in uniform, a traffic warden or Civil Enforcement Officer may move or cause to be moved a vehicle from a parking place in an emergency.

PART III - SUPPLEMENTARY PROVISIONS

Section 1 - General

14. Period a vehicle may be left after the penalty charge has been incurred

- (1) The period for which a vehicle may be left in a parking place during the permitted hours after the penalty charge has been incurred shall not exceed one hour.

15. Restriction on the removal of tickets and permits

- (1) Where a ticket or permit has been displayed on a vehicle, no person, not being the driver of the vehicle, shall remove the ticket or permit from the vehicle unless authorised to do so by the driver.

16. Indications by ticket machine and tickets

- (1) Payment of the charge for a vehicle left in a parking place referred to in Schedules 1, 2, 3 and 4 shall be indicated by the issue by a ticket machine relating to that parking place of a ticket indicating a charge paid in respect of the period in accordance with Schedule 11, the day and date of issue, the expiry date and by the display of that ticket in the manner specified in Article 7(1)(b).
- (2) The expiry of the period for which payment was made by the charge for a vehicle left in a parking place referred to in Schedules 1, 2, 3 and 4 shall be indicated by the display on the vehicle in accordance with the provisions of Article 7(1)(b) of a ticket issued by a ticket machine relating to that parking place showing the day and date of issue, charge and expiry time of the charge, and the day so shown is not the day on which the vehicle is so left or the time shown on the clock on the said ticket machine is more than two minutes later than the time shown on the ticket.
- (3) The expiry of the period mentioned in Article 13 (being the period for which a vehicle may remain in a parking place after the penalty charge has been incurred) shall be indicated in the case of a vehicle left in a parking place referred to in Schedules 1, 2, 3 and 4 by the display on the vehicle in accordance with the provisions of Article 7(1)(b) a ticket issued by a ticket machine relating to that parking place showing the day and date of issue, charge and expiry time of the charge, and the day so shown is not the day on which the vehicle is so left or the time shown on the clock on the said ticket parking meter is more than one hour later than the time shown on the ticket.

17. Indications by ticket machine and tickets as evidence

- (1) If at any time while a vehicle is left in a parking place referred to in Schedules 1, 2, 3 and 4 during the permitted hours no ticket issued by a ticket machine relating to that parking place is displayed on that vehicle in accordance with the provisions of Article 7(1)(b) it shall be presumed unless the contrary is proved that the charge has not been duly paid.

- (2) If at any time while a vehicle is left in a parking place referred to in Schedule 1, 2, 3 and 4 during the permitted hours the ticket issued by a ticket machine relating to that parking place and displayed on the vehicle in accordance with the provisions of Article 7(1)(b) and the clock on the ticket machine by which such ticket was issued give the indication mentioned in Article 15(2), it shall be presumed unless the contrary is proved that the charge has been duly paid in respect of that vehicle, and that the period for which payment was made by the charge has already expired.
- (3) If at any time while a vehicle is left in a parking place referred to in Schedules 1, 2, 3 and 4 during the permitted hours the ticket issued by a ticket machine relating to that parking place and displayed on the vehicle in accordance with the provisions of Article 7(1)(b) and the clock on the ticket machine by which such ticket was issued give the indication mentioned in Article 15(3), that indication shall in any proceedings for a parking contravention under the Traffic Management Act 2004:
 - (a) of leaving a vehicle in that parking place for longer than after the penalty charge has been incurred than the time authorised by Article 13, be evidence that it was so left; and
 - (b) of failing to pay the penalty charge, be evidence that the charge was incurred.
- (4) Any ticket issued by a ticket machine relating to a parking place referred to in Schedule 1, 2, 3 and 4 shall be presumed unless the contrary is proved to have been issued on the day shown thereon when the clock on the ticket parking meter by which such ticket was issued indicated the expiry time shown on the said ticket less the period.

18. Indications and evidence by the telephone payment parking system

- (1) Where a vehicle has been left in a parking place referred to in Schedules 1, 2, 3 and 4 using the telephone payment parking system, an indication that payment has been made and the parking period for which payment has been made shall either:
 - a) appear on a hand-held device; or
 - b) be obtained by a civil enforcement officer contacting the service provider.
- (2) Without prejudice to the provisions of this Order, if at any time while a vehicle is left in a parking place referred to in the Schedule and no indication that payment of the parking charge has been made using the telephone payment parking system, or an indication that the parking period for which payment was made has expired, it shall be presumed, unless the contrary is proved, that either:
 - (a) the parking charge has not been duly paid in respect of that vehicle; or
 - (b) the parking period for which payment was made had already expired.

19. No tickets to be displayed other than those obtained on payment of the parking charge

- (1) No person shall display on a vehicle left in a parking place referred to in Schedule 1, 2, 3 and 4 during the permitted hours any ticket other than the ticket issued by the ticket machine relating to that parking place upon payment of the parking charge in respect of that vehicle.

20. Interval before a vehicle may again be left in a parking place

- (1) Without prejudice to the provisions of Article 18, no vehicle which has been taken away from a parking place during the permitted hours, after the charge has been incurred, shall until the expiration of one hour from the time it was taken away again be left in the parking place during the permitted hours.

21. Power to suspend the use of a parking place

- (1) A Civil Enforcement Officer duly authorised by the council or by the Commissioner of Police of the Metropolis may suspend the use of a parking place or any part thereof whenever he considers such suspension reasonably necessary:
 - (a) for the purpose of facilitating the movement of traffic or promoting its safety;
 - (b) for the purpose of any building operation, demolition or excavation adjacent to the parking place, the maintenance, improvement or reconstruction of the highway or the cleansing of gullies in or adjacent to the parking place, the laying, erection, alteration or repair in or adjacent to the parking place of any sewer or of any main, pipe or apparatus for the supply of gas, water or electricity or any telecommunication system or the placing, maintenance or removal of any traffic sign;
 - (c) for the convenience of occupiers of premises adjacent to the parking place on any occasion of the removal of furniture to or from one office or dwelling house adjacent to the parking place from or to a depository, another office or dwelling house;
 - (d) on any occasion on which it is likely by reason some special attraction that any street will be thronged or obstructed; or
 - (e) for the convenience of occupiers of premises adjacent to the parking place at times of weddings or funerals, or on other special occasions.
- (2) A police constable in uniform or traffic warden may suspend for not longer than twenty four hours the use of a parking place or any part thereof whenever they consider suspension reasonably necessary for the purposes of facilitating the movement of traffic or promoting its safety.
- (3) A Civil Enforcement Officer, police constable or traffic warden suspending the use of a parking place or any part thereof in accordance with the provisions of paragraph (1), or as the case may be, paragraph (2) of this Article shall thereupon place or cause to be placed in or adjacent to any part of that parking place which is suspended a traffic sign of any size, colour and type prescribed or authorised under Section 64 of the Road Traffic Regulation Act 1984 indicating that waiting by vehicles is prohibited.
- (4) No person shall cause or permit a vehicle to wait in a parking place or part thereof during such period as there is in or adjacent to that part of the parking place a traffic sign placed in pursuance of paragraph (3) of this Article. Provided that nothing in this paragraph shall apply to:
 - (a) any vehicle being used for fire brigade, ambulance or police purposes or any vehicle which is waiting for any reason specified in Article 24(1) (b) to (c); or
 - (b) anything done with the permission of the person suspending the use of the parking place or part thereof in pursuance of paragraph (1) of this Article.

22. Restriction on use of a parking place

- (1) During the permitted hours no person shall use any parking place or any vehicle while it is in a parking place in connection with the sale or offering for sale of any goods to any

person in or near the parking place or in connection with the selling or offering for sale of his skill in handicraft or his services in any other capacity. Provided that nothing in this Article shall prevent the sale of goods from a vehicle:

- (a) if the goods are immediately delivered at or taken into premises adjacent to the vehicle from which the sale effected; or
- (b) if the vehicle is one to which provisions of Article 19(1) (h) or (i) apply.

23. Restriction on waiting by a vehicle in a parking place

- (1) Any vehicle may wait during the permitted hours anywhere in any part of a parking place if the use of that part has not been suspended and if the vehicle is waiting:
 - (a) for so long as is necessary to enable a person to board or alight from the vehicle and to load thereon or unload therefrom their personal luggage;
 - (b) for so long as is necessary to enable goods to be loaded onto the vehicle from premises adjacent to the parking place or unloaded from the vehicle to premises adjacent to the parking place;
 - (c) for so long as is necessary for postal packets to be collected from or delivered to premises or posting boxes adjacent to the parking place in which the vehicle is waiting;
 - (d) whilst being used for fire brigade, ambulance or police purposes or, not being a passenger vehicle, is being used in the service of a local authority in pursuance of statutory powers or duties provided that in all the circumstances it is reasonably necessary in the exercise of such powers or in the performance of such duties for the vehicle to wait in the place in which it is waiting;
 - (e) the vehicle is waiting only for so long as may be necessary to enable it to be used in connection with the removal of any obstruction to traffic;
 - (f) owing to the driver being prevented from proceeding by circumstances beyond his control or to such waiting being necessary in order to avoid an accident;
 - (g) the vehicle not being a passenger vehicle is waiting only for so long as may be reasonably necessary to enable it to be used for any purpose specified in Article 17(1) (b);
 - (h) the vehicle is in actual use in connection with the removal of furniture to or from one office or dwellinghouse adjacent to the parking place from or to a depository, another office or dwelling house; or
 - (i) the vehicle is waiting otherwise than in a parking bay or parking space if goods are being sold or offered or exposed for sale from the vehicle by a person who is licensed by the Council to sell goods from a stationary vehicle on a pitch situated in a parking space.
- (2) No charge specified in the foregoing provisions of this Order shall be payable in respect of any vehicle waiting in a parking place in accordance with the foregoing provisions of this Article.
- (3) Nothing in the foregoing provisions of this Order shall be taken as authorising anything which would be a contravention of any Regulations made or having effect as if made under Section 25 of the Road Traffic Regulation Act 1984.

24. Manner of waiting in a parking place

24. Manner of waiting in a parking place

- (1) Every vehicle waiting in a parking place by virtue of the provisions of Article 19(1) (e), (f), (g), (h) or (i) shall stand so that every part of the vehicle is wholly within the limits of the parking place unless the width of the vehicle precludes compliance with this paragraph.
- (2) If the width of the vehicle does preclude compliance with paragraph (1) of this Article the vehicle waiting in the parking place shall stand so that the longitudinal axis of the vehicle is parallel to the edge of the carriageway and the distance between the said edge and the nearest wheel of the vehicle is not more than 300 millimetres.
- (3) Every vehicle left in a parking place in relation to which special provisions as to the manner of standing of a vehicle in that parking place is specified in column 5 of Schedules 1, 2, 3, 4, 5, 6, 7 and 8 shall stand so that as to be in accordance with those provisions.

25. Installation of ticket machines, placing of signs etc

- (1) The Council shall:
 - (a) install and maintain in proper working order at least one ticket machine relating to each parking place referred to in Schedule 1, 2, 3 and 4 to this Order; and
 - (b) cause the limits of each parking place and of each parking space to be indicated on the carriageway by placing and maintaining thereon traffic signs (road markings) of any size, colour and type prescribed or authorised under Section 64 of the Road Traffic Regulation Act 1984; and
 - (c) place and maintain in or in the vicinity of each parking place traffic signs of any size, colour and type prescribed by or authorised under the Road Traffic Regulation Act 1984; and
 - (d) carry out such other work as is reasonably required for the purpose of the satisfactory operation of a parking place.

Section 2 - Residents' Permits

26. Application for and issue of residents' permits for the use of parking places

- (1) Any resident who is the user of a vehicle of the following class, that is to say a passenger vehicle, a goods vehicle the overall height of which does not exceed 2.28 metres and the overall length of which does not exceed 5.25 metres, a motor cycle or an invalid carriage, may apply to the Council for the issue of a residents' permit in respect of that vehicle and any such application shall be made on a form issued by and obtainable from the Council and shall include the particulars and information required by such form to be supplied.
- (2) The Council may at any time require an applicant for a residents' permit or a residents' permit holder to produce to an officer of the Council such evidence in respect of an application for a residents' permit made to them as they may reasonably call for to verify any particulars of information given to them or in respect of any residents' permit issued by them as they may reasonably call for to verify that the residents' permit is valid.
- (3) In receipt of an application duly made under the foregoing provisions of this Article and upon receipt of the charge specified in Schedule 13, the Council, upon being satisfied that the applicant is a resident and is the user of a vehicle of the class specified in paragraph (1) of this Article, shall issue to the applicant therefor:

permit relates by the owner of such vehicle or by any person using such with the consent of the owner other than a person to whom such vehicle has been let for hire or reward. Provided that, subject to the provisions of Article 23, the Council shall not issue a residents' permit to any resident which would be valid during any period during Which any other residents' permit issued to that resident is or would be valid; and

(b) one protective cover for the display therein of a residents' permit.

(4) Subject to the provisions of this Order a residents' permit shall be valid for a period of six, twelve or twenty-four months running from the beginning of the month in which the residents' permit first became valid.

27. Refund of charge paid in respect of a residents' permit

(1) A residents' permit holder who surrenders a residents' permit to the Council before it becomes valid shall be entitled to a refund of the charge paid in respect thereof.

(2) A residents' permit holder who surrenders a residents' permit to the Council after it has become valid shall be entitled to a refund of a part of the charge paid. The refund will be paid pro rata for any complete months which remain unexpired at the time when the residents' permit is surrendered to the Council.

28. Application for and issue of business permits for the use of parking places

(1) Any business user who is the owner of a vehicle of the following class, that is to say a passenger vehicle, a goods carrying vehicle the overall height of which does not exceed 2.50 metres and the overall length of which does not exceed 5.25 metres or a motor cycle may apply to the Council for the issue of a business permit in respect of that vehicle and any such application shall be made on a form issued by and obtainable from the Council and shall include the particulars and information required by such form to be supplied.

(2) The Council may at any time require an applicant for a business permit or a business permit holder to produce to an officer of the Council such evidence in respect of an application for a business permit made to them as they may reasonably call for to verify any particulars or information given to them or in respect of any business permit issued by them as they may reasonably call for to verify that the business permit is valid.

(3) Upon receipt of an application duly made under the foregoing provisions of this Article and upon receipt of the charge specified in Schedule 12 of this Article, the Council upon being satisfied that the applicant is a business user is the owner of a vehicle of the class specified in paragraph (1) of this Article, shall issue to the applicant therefor:

(a) one business permit for the leaving during the permitted hours in a parking space in any parking place referred to in Schedule 2, 4, 5 and 6 to this Order of the vehicle to which such business permit relates by the owner of such vehicle or by any person using such vehicle with the consent of the owner other than a person to whom such vehicle has been let for hire or reward;

(b) one protective cover for the display therein of the business permit.

(4) Subject to the provisions of this Order a business permit shall be valid for a period of twelve months running from the date on which the business permit first becomes valid.

29. Refund of charge paid in respect of business permits

- (1) A business permit holder who surrenders a business permit to the Council before it becomes valid shall be entitled to a refund of the charge paid in respect thereof.
- (2) A business permit holder who surrenders a business permit to the Council after it has become valid shall be entitled to a refund of the charge paid. The refund will be paid pro rata for any complete months which remain unexpired at the time when the residents' permit is surrendered to the Council.
- (4) The Council may at its absolute discretion limit the number of business permits that are issued at any one time in respect of businesses.

30. Surrender, withdrawal and validity of permits

- (1) A permit holder may surrender a permit to the Council at any time and shall surrender a permit to the Council on the occurrence of any one of the events set out in paragraph (3) of this Article or in accordance with the provisions of paragraph (5) of this Article.
- (2) The Council may, by notice in writing served on the permit holder by sending the same by recorded delivery service to the residents' permit holder at the address shown by that person on the application for the permit or at any other address believed to be that person's place of abode, withdraw a residents' permit if it appears to the Council that any one of the events set out in paragraph (3)(a), (b) or (d) of this Article has occurred and the residents' permit holder shall surrender the residents' permit to the Council within 48 hours of the receipt of the afore-mentioned notice.
- (3) The events referred to in the foregoing provisions of this Article are:
 - (a) the permit holder ceasing to be a resident or a business user;
 - (b) the permit holder ceasing to be the owner of the vehicle in respect of which the permit was issued;
 - (c) the withdrawal of such permit by the Council under the provisions of paragraph (2) of this Article;
 - (d) the vehicle in respect of which such permit was issued being adapted or used in such a manner that it is not a vehicle of the class specified in respect of the parking place;
 - (e) the issue of the duplicate permit by the Council under the provisions of Article 27;
 - (f) the permit ceasing to be valid pursuant to the provisions of paragraph (4) of this Article.
- (4) Without prejudice to the foregoing provisions of this Article, a permit shall cease to be valid at the expiration of the period specified thereon or the occurrence of any one of the events set out in paragraph (3) (a), (b), (c), (d), (e) or (f) of this Article, whichever is the earlier.
- (5) Where a permit is issued to any person upon receipt of a cheque and the cheque is subsequently dishonoured, the permit shall cease to be of any effect and the Council shall by notice in writing served on the person to whom the permit was issued by sending the same by recorded delivery service to him at the address shown by that person on the application for the permit or any other address believed to be that person's

place of abode, require that person to surrender the permit to the Council within 48 hours of the receipt of the afore-mentioned notice.

31. Application for and issue of a duplicate permit

- (1) If a permit is mutilated or accidentally defaced or the figures or particulars thereon have become illegible or the colour of the permit has become altered by fading or otherwise, the permit holder shall either surrender it to the Council or apply to the Council for the issue to him of a duplicate permit and the Council upon the receipt of the permit, shall issue a duplicate permit so marked and upon such issue the permit shall become valid.
- (2) If a permit is lost or destroyed, the permit holder may apply to the Council for the issue to him of a duplicate permit and the Council, upon being satisfied as to the loss or destruction, shall issue a duplicate permit so marked and upon such issue the permit shall become valid.
- (3) The provisions of this Order shall apply to a duplicate permit and an application therefore as if it were a permit or, as the case may be, an application therefor.

32. Form of permit

- (1) A residents' permit shall be in writing and shall include the following particulars:
 - (a) the registration mark of the vehicle in respect of which the permit is issued;
 - (b) the period during which, subject to the provisions of Article 22(4), the residents' permit shall remain valid;
 - (c) the hours during which the vehicle may be left in a parking place;
 - (d) an indication that the residents' permit has been issued by the Council; and
 - (e) an indication that the charge for the issue thereof has been paid to the Council.
- (2) A business permit shall be in writing and shall include the following particulars:
 - (a) the registration mark of the vehicle in respect of which the permit has been issued or the name of the company to which the permit has been issued;
 - (b) the period during which, subject to the provisions of Article 24(4), the business permit shall remain valid;
 - (c) the hours during which the vehicle may be left in a parking place;
 - (d) an indication that the business permit has been issued by the Council; and
 - (e) an indication that the charge for the issue thereof has been paid to the Council.

Section 3 - Residents' Visitor Parking Cards

33. Application for the issue of residents' visitor parking cards for the use of parking places

- (1) Any householder may apply to the Council for the issue of up to ten residents' visitor parking cards for a vehicle of the class described in Article 22(1) and belonging to a person visiting that household and any such application shall be made on a form issued by and obtainable from the Council and shall include the particulars and information required by such form to be supplied.
- (2) The Council may at any time require an applicant for residents' visitor parking cards to produce to an officer of the Council such evidence in respect of an application for such a

residents' visitor parking cards made to them as they may reasonably call for to verify any particulars or information given to them.

- (3) On receipt of an application duly made under the foregoing provisions of this Article and upon receipt of the charge specified in paragraph (4) of this Article, the Council upon being satisfied that the applicant is a householder, shall issue to the applicant thereof a maximum of ten residents' visitors parking cards in any 12 month period.
- (4) The charge referred to in paragraph (3) of this Article shall be fifteen pounds in respect of the supply of each residents' visitors parking card.

34. Refund of charge paid in respect of a residents' visitor parking card

- (1) A householder who surrenders a residents' visitor parking card to the Council before it becomes valid shall be entitled to a refund of the charge paid.

35. Surrender, withdrawal and validity of a residents' visitor parking card

- (1) A householder may surrender a residents' visitor parking card to the Council at any time and shall surrender a residents' visitor parking card to the Council on the occurrence of the event set out in paragraph (3) of this Article or in accordance with the provisions of paragraph (5) of this Article.
- (2) The Council may, by notice in writing served on the householder by sending the same by recorded delivery service to the householder at the address shown by that person on the application for the residents' visitor parking card or any other address believed to be that person's place of abode, withdraw a residents' visitor parking card if it appears to the Council that the event set out in paragraph (3)(a) of this Article has occurred and the householder shall surrender the residents' visitor parking card to the Council within 48 hours of the receipt of the afore-mentioned notice.
- (3) The events referred to in the foregoing provisions of this Article are:
 - (a) the householder ceasing to be a resident;
 - (b) the withdrawal of such a residents' visitor parking card by the Council under the provisions of paragraph (2) of this Article;
 - (c) the residents' visitor parking card ceasing to be valid pursuant to the provisions of paragraph (4) of this Article.
- (4) Without prejudice to the foregoing provisions of this Article, a residents' visitor parking card shall cease to be valid at the expiration of the period specified thereon or on the occurrence of any one of the events set out in paragraph (3) (a) or (b) of this Article, whichever is the earlier.
- (5) Where residents' visitor parking cards are issued to any person upon receipt of a cheque and the cheque is subsequently dishonoured, the residents' visitor parking cards shall cease to be of any effect and the Council shall by notice in writing served on the person to whom the residents' visitor parking cards were issued by sending the same by recorded delivery service to him at the address shown by that person on the application for the residents' visitor parking cards or at any other address believed to be that person's place of abode, require that person to surrender the residents' visitor parking cards to the Council within 48 hours of the receipt of the afore-mentioned notice.

36. Application for and issue of replacement residents' visitor parking cards

- (1) If a residents' visitor parking card is mutilated or accidentally defaced or the figures or particulars thereon have become illegible or the colour of the residents' visitor parking card has become altered by fading or otherwise, the householder shall either surrender it to the Council or apply to the Council for the issue of a replacement residents' visitor parking card and the Council, upon receipt of the residents' visitor parking card, shall issue a replacement residents' visitor parking card.
- (2) The provisions of this Order shall apply to a replacement residents' visitor parking card and an application therefor as if it were a residents' visitor parking card or, as the case may be, an application therefor.

37. Form of residents' visitor parking card

- (1) A residents' visitor parking card shall be in writing and shall include the following particulars:
 - (a) the month;
 - (b) the date in the month;
 - (c) the time of arrival;
 - (d) the vehicle registration mark;
 - (e) the period during which, subject to the provisions of Article 29(3), the residents' visitor parking card may remain valid;
 - (f) the hours during which a vehicle may be left in a parking place, subject to the foregoing provisions of this Order;
 - (g) an indication that the residents' visitor parking card has been issued by the Council.

Dated this fifteenth day of June 2009.



Director of Environment

SCHEDULE 1

In relation to a parking place referred to in this schedule, the expression "Permitted hours" means the period between 7.00 am and 7.00 pm on Mondays to Saturdays inclusive, any such day not being a Sunday or a Christmas Day.

Parking places in respect of which a vehicle may be left during the permitted hours if it displays a valid parking ticket from a ticket issuing machine – maximum stay 2 hour.

No. of parking place	Designated parking place	Minimum number of parking bays	Minimum total length in metres not to be occupied by parking bays	Special manner of standing
1.	2.	3.	4.	5.
1	Capital Interchange Way, Brentford. The south-east side, between a point 11metres south-west of the south-western wall of Unit 1 Capital Interchange Way and a point 11 metres north-east of that wall.	1	0	-

SCHEDULE 1A

In relation to a parking place referred to in this schedule, the expression "Permitted hours" means the period between 7.00 am and 7.00 pm on Mondays to Saturdays inclusive, any such day not being a Sunday or a Christmas Day.

Parking places in respect of which a vehicle may be left during the permitted hours if it displays a valid parking ticket from a ticket issuing machine – maximum stay 5 hour.

No.	<u>Description of Parking Place</u>	Minimum number of parking spaces	Minimum total length in metres which may not be occupied by parking spaces	Special Manner of Standing
2	Capital Interchange Way, Brentford. The north-east side, between a point opposite the boundary wall of the Brentford Fountain Leisure Centre and a point 6 metres south-east of the north-western wall of Citroen UK Limited. Capital Interchange Way.	1	0	-
3	Capital Interchange Way, Brentford. The south-east side, between a point 3 metres north-east of the party wall of Units 1 and 2 Capital Interchange Way and a point 30 metres north-east of that party wall.	1	0	
4	Capital Interchange Way, Brentford. The south-east side, between a point 20 metres south-west of the party wall of Units 3 and 4 Capital Interchange Way and a point 10 metres north-east of that party wall.	1	0	
5	Capital Interchange Way, Brentford. The south-east side, from a point 14 metres south-west of the south-western kerb-line of Great West Road south-westwards for a distance of 23 metres.	1	0	

SCHEDULE 2

Parking places in respect of which a vehicle may be left during the permitted hours if it displays a valid parking ticket from a ticket machine or a valid business permit.

No. of parking place	Designated parking place	Minimum number of parking bays	Minimum total length in metres not to be occupied by parking bays	Special manner of standing
1.	2.	3.	4.	5.

No items.

SCHEDULE 3

Parking places in respect of which a vehicle may be left during the permitted hours if it displays a valid parking ticket from a ticket machine or a valid residents' permit, a valid residents' visitors parking card.

No. of parking place	Designated parking place	Minimum number of parking bays	Minimum total length in metres not to be occupied by parking bays	Special manner of standing
1.	2.	3.	4.	5.

No items.

SCHEDULE 4

Parking places in respect of which a vehicle may be left during the permitted hours if it displays a valid parking ticket from a ticket machine, a valid business permit, a valid residents' permit, a valid residents' visitors parking card.

No. of parking place	Designated parking place	Minimum number of parking bays	Minimum total length in metres not to be occupied by parking bays	Special manner of standing
1.	2.	3.	4.	5.

No items.

SCHEDULE 5

Parking places in respect of which a vehicle may be left during the permitted hours if it displays a valid business permit.

No. of parking place	Designated parking place	Minimum number of parking bays	Minimum total length in metres not to be occupied by parking bays	Special manner of standing
1.	2.	3.	4.	5.

No items.

SCHEDULE 6

Parking places in respect of which a vehicle may be left during the permitted hours if it displays a valid business permit or a valid residents' permit or a residents' visitor parking card.

No. of parking place	Designated parking place	Minimum number of parking bays	Minimum total length in metres not to be occupied by parking bays	Special manner of standing
1.	2.	3.	4.	5.
No items.				

SCHEDULE 7

Parking places in respect of which a vehicle may be left during the permitted hours if it displays a valid residents' permit or a valid residents' visitor parking card.

No. of parking place	Designated parking place	Minimum number of parking bays	Minimum total length in metres not to be occupied by parking bays	Special manner of standing
1.	2.	3.	4.	5.

No items.

SCHEDULE 8

Parking places in respect of which a vehicle may be left during the permitted hours if it displays a valid residents' permit.

No. of parking place	Designated parking place	Minimum number of parking bays	Minimum total length in metres not to be occupied by parking bays	Special manner of standing
1.	2.	3.	4.	5.
No items.				

SCHEDULE 9
Streets or parts of streets for the purpose of the definition of "business"

No items.

SCHEDULE 10
Streets or parts of streets for the purpose of the definition of "resident"

No items.

SCHEDULE 11
On-Street Pay & Display Parking Charges

Charge	Period (Minutes)
£ 0.10	5
£ 0.20	9
£ 0.30	13
£ 0.40	18
£ 0.50	22
£ 0.60	26
£ 0.70	30
£ 0.80	35
£ 0.90	39
£ 1.00	43
£ 1.10	48
£ 1.20	52
£ 1.30	56
£ 1.40	60
£ 1.50	65
£ 1.60	69
£ 1.70	73
£ 1.80	78
£ 1.90	82
£ 2.00	86
£ 2.10	90
£ 2.20	95
£ 2.30	99
£ 2.40	103
£ 2.50	108
£ 2.60	112
£ 2.70	116
£ 2.80	120
£ 2.90	125
£ 3.00	129
£ 3.10	133
£ 3.20	138
£ 3.30	142
£ 3.40	146
£ 3.50	150
£ 3.60	155
£ 3.70	159
£ 3.80	163
£ 3.90	168
£ 4.00	172
£ 4.10	176
£ 4.20	180

Charge	Period (Minutes)
£ 4.30	185
£ 4.40	189
£ 4.50	193
£ 4.60	198
£ 4.70	202
£ 4.80	206
£ 4.90	210
£ 5.00	215
£ 5.10	219
£ 5.20	223
£ 5.30	228
£ 5.40	232
£ 5.50	236
£ 5.60	240
£ 5.70	245
£ 5.80	249
£ 5.90	253
£ 6.00	258
£ 6.10	262
£ 6.20	266
£ 6.30	270
£ 6.40	275
£ 6.50	279
£ 6.60	283
£ 6.70	288
£ 6.80	292
£ 6.90	296
£ 7.00	300
£ 7.10	305
£ 7.20	309
£ 7.30	313
£ 7.40	318
£ 7.50	322
£ 7.60	326
£ 7.70	330
£ 7.80	335
£ 7.90	339
£ 8.00	343
£ 8.10	348
£ 8.20	352
£ 8.30	356
£ 8.40	360

Charge	Period (Minutes)
£ 8.50	365
£ 8.60	369
£ 8.70	373
£ 8.80	378
£ 8.90	382
£ 9.00	386
£ 9.10	390
£ 9.20	395
£ 9.30	399
£ 9.40	403
£ 9.50	408
£ 9.60	412
£ 9.70	416
£ 9.80	420
£ 9.90	425
£ 10.00	429
£ 10.10	433
£ 10.20	438
£ 10.30	442
£ 10.40	446
£ 10.50	450
£ 10.60	455
£ 10.70	459
£ 10.80	463
£ 10.90	468
£ 11.00	472
£ 11.10	476
£ 11.20	480

**SCHEDULE 12
Business Permit Charges**

	12-month permit
Goods vehicle	£400
Passenger vehicle	£635

**SCHEDULE 13
Resident Permit Charges**

	6-month permit	12-month permit	24-month permit
First vehicle	£35	£60	£115
Second vehicle	£45	£80	£155
Third vehicle	£70	£130	£255

EXPLANATORY NOTE

(This note is not part of the Order, but is intended to indicate its general purport)

This Order revokes and re-enacts in a modified form the Hounslow (Parking Places) (No. 2) Order 1997 that imposed parking places in certain lengths of Capital Interchange Way, Chiswick in the London Borough of Hounslow by:

- (a) updating the Articles of the base order to incorporate all subsequent amendments and take into account any minor drafting amendments and corrections; and
- (b) provide additional methods of payment of parking charges payable for leaving vehicles in the designated parking places by allowing payment by telephone using a telephone payment system; and
- (c) change all parking meters to ticket machines (Pay & Display).

Traffic Management Order

2020 No.30

The London Borough of Hounslow (Capital Interchange Way) (Parking Places) (Amendment No.1) Order 2020

Made on 20 April 2020

Coming into operation on 27 April 2020

The Council of the London Borough of Hounslow, having consulted the Commissioner of Police of the Metropolis, in exercise of the powers conferred by sections 45, 46, 49, 51 and 124 of the Road Traffic Regulation Act 1984^a as amended, and of all other enabling powers hereby make the following Order:

1. This Order may be cited as the London Borough of Hounslow (Capital Interchange Way) (Parking Places) (Amendment No.1) Order 2020 and shall come into operation for all purposes on 27 April 2020.
2. Without prejudice to the validity of anything done or to any liability incurred in respect of any act or omission before the coming into operation of this Order, the London Borough of Hounslow (Capital Interchange Way) (Parking Places) (No. 1) Order 2009^b shall have effect as though:
 - (a) the item numbered 1 in Schedule 1 to that Order was substituted with the item similarly numbered and set out in Schedule 1 to this Order;
 - (b) the items numbered 2, 3, 4 and 5 in Schedule 1A to that Order were substituted with the items similarly numbered and set out in Schedule 2 to this Order; and
 - (c) in Article 28 paragraph (1) is substituted with the following paragraph:

“Any business user who is the owner of a vehicle or a motor cycle may apply to the Council for the issue of a business permit in respect of that vehicle and any such application shall be made on a form issued by and obtainable from the Council and shall include the particulars and information required by such form to be supplied.”

Dated this twentieth day of April 2020



Assistant Director Transport, Parking & Environmental Strategy
(the officer appointed for the purpose)

^a 1984 c. 27

^b LBH 2009/16

Schedule 1

In relation to a parking place referred to in this Schedule, the expression “permitted hours” means the period between 9am-3pm Monday to Friday and Saturday 9am-5.30pm, except for Christmas Day, Good Friday and Bank Holidays.

Parking places in respect of which a vehicle may be left during the permitted hours if it displays a valid parking ticket from a ticketing issuing machine – maximum stay 4 hour.

1	2	3	4	5
No. of parking place	Designated parking place	Minimum number of parking bays	Minimum total length in metres not to be occupied by parking bays	Special manner of standing
1.	Capital Interchange Way, Brentford, the north-east side, from the north-western boundary of Brentford Fountain Leisure Centre, 658 Chiswick High Road to a point 10 metres south-east of the north-western building line of Citroen London West, Capital Interchange Way	1	0	-

Schedule 2

In relation to a parking place referred to in this Schedule, the expression “permitted hours” means the period between 9am-5.30pm Monday-Saturday, except for Christmas Day, Good Friday and Bank Holidays.

Parking places in respect of which a vehicle may be left during the permitted hours if it displays a valid parking ticket from a ticketing issuing machine – maximum stay 4 hour.

1	2	3	4	5
No. of parking place	Designated parking place	Minimum number of parking bays	Minimum total length in metres not to be occupied by parking bays	Special manner of standing
2.	Capital Interchange Way, Brentford, the south-east side, from a point 58 metres south-west of the north-easternmost building line of Citroen London West, Capital Interchange Way north-eastwards for a distance of 22 metres	1	0	-
3.	Capital Interchange Way, Brentford, the south-east side, from a point 18.5 metres south-west of the north-easternmost building line of Citroen London West, Capital Interchange Way to a point 9.5 metres north-east of the north-easternmost building line of Citroen London West, Capital Interchange Way	1	0	-
4.	Capital Interchange Way, Brentford, the south-east side, from a point 28 metres north-east of the north-easternmost building line of Citroen London West, Capital Interchange Way to a point 15.5 metres south-west of the south-westernmost building line of West London Volkswagen, Capital Interchange Way	1	0	-
5.	Capital Interchange Way, Brentford, the south-east side, from a point 10.5 metres south-west of the south-westernmost building line of West London Volkswagen, Capital Interchange Way north-eastwards for a distance of 24 metres	1	0	-

EXPLANATORY NOTE

(This Note is not part of the Order, but is intended to indicate its general purport.)

The London Borough of Hounslow (Capital Interchange Way) (Parking Places) (No. 1) Order 2019 designates parking places in streets in the Capital Interchange area in the London Borough of Hounslow at which vehicles authorised by that Order may be left in those parking places during the permitted hours.

This Order amends the Order of 2009 by amending the operational hours of the pay and display parking bays

Traffic Management Order

2020 No.31

The London Borough of Hounslow (Waiting and Loading Restriction) (Amendment No.265) Order 2020

Made on 20 April 2020

Coming into operation on 27 April 2020

The Council of the London Borough of Hounslow, after consulting the Commissioner of Police of the Metropolis, in exercise of the powers conferred by sections 6 and 124 to the Road Traffic Regulation Act 1984¹, as amended and of all other enabling powers hereby make the following Order:

- 1 This Order shall come into operation on 27 April 2020 and may be cited as the London Borough of Hounslow (Waiting and Loading Restriction) (Amendment No.265) Order 2020.
- 2 Without prejudice to the validity of anything done or to any liability incurred in respect of any act or omission before the coming into operation of this Order, The Hounslow (Waiting and Loading Restriction) Order 2008² shall have effect as though:
 - a) the item numbered 110 in Schedule 1 to that Order was substituted with the item similarly numbered and set out in Schedule 1 to this Order.

Dated this twentieth day of April 2020



Assistant Director Transport, Parking & Environmental Strategy
(the officer appointed for the purpose)

¹ 1984 c.27

² 2008/24

Schedule 1

1 Item Number	2 Street	3 Prescribed hours - see Schedule 3
110	<p>Capital Interchange Way, Brentford</p> <p>(a) north-west & south-west side,</p> <p style="padding-left: 20px;">(i) from a point 38 south-east of the north-western boundary of Brentford Fountain Leisure Centre, 658 Chiswick High Road to a point 34.5 metres north-east of the south-westernmost building line of West London Volkswagen, Capital Interchange Way</p> <p>(b) north-east side,</p> <p style="padding-left: 20px;">(i) from the north-western boundary of Brentford Fountain Leisure Centre, 658 Chiswick High Road south-eastwards for a distance of 38 metres</p> <p style="padding-left: 20px;">(ii) from the north-western boundary of Brentford Fountain Leisure Centre, 658 Chiswick High Road to a point 10 metres south-east of the north-western building line of Citroen London West, Capital Interchange Way</p> <p>(c) north-east & south-east side,</p> <p style="padding-left: 20px;">(i) from a point 10 metres south-east of the north-western building line of Citroen London West, Capital Interchange Way to a point 58 metres south-west of the north-easternmost building line of Citroen London West, Capital Interchange Way</p> <p>(d) south-east side,</p> <p style="padding-left: 20px;">(i) from a point 36 metres south-west of the north-easternmost building line of Citroen London West, Capital Interchange Way north-eastwards for a distance of 17.5 metres</p> <p style="padding-left: 20px;">(ii) from a point 9.5 metres north-east of the north-easternmost building line of Citroen London West, Capital Interchange Way north-eastwards for a distance of 18.5 metres</p> <p style="padding-left: 20px;">(iii) from a point 15.5 metres south-west of the south-westernmost building line of West London Volkswagen, Capital Interchange Way north-eastwards for a 26 metres</p>	<p style="text-align: center;">A</p> <p style="text-align: center;">A</p> <p style="text-align: center;">UUUU</p> <p style="text-align: center;">A</p> <p style="text-align: center;">A</p> <p style="text-align: center;">A</p> <p style="text-align: center;">A</p>

EXPLANATORY NOTE

(This Note is not part of the Order, but is intended to indicate its general purport.)

This Order further amends the Hounslow (Waiting and Loading Restriction) Order 2008 by amending waiting restrictions in Capital Interchange Way, Brentford