



London Borough of Hounslow

Deposited Documents – Reference TMO/P036/20

Held on deposit online on the London Borough of Hounslow's website -

www.hounslow.gov.uk/downloads/20165/traffic_notices

Placed on deposit on Wednesday, 28 October 2020

End of consultation period is Wednesday, 18 November 2020

Proposed goods vehicle loading bay – Bath Road, Hounslow

Contents:

1. **Notice of Intent dated 28 October 2020**
2. **Proposed Traffic Management Orders**
 - A. The London Borough of Hounslow (Loading Places) (Amendment No.***) Order 20**
3. **Statement of Reason**
4. **Plan**
5. **Existing Traffic Management Orders**
 - A. The London Borough of Hounslow (Loading Places) Order 2009

Any person wishing to comment on or object to the order should follow the instructions on the Notice.

Any queries regarding these deposited documents should be sent by email to trafficorders@hounslow.gov.uk or alternatively a voicemail can be left on extension 3322. These documents may be destroyed on or after 31 December 2020



Proposed goods vehicle loading bay – Bath Road, Hounslow

A. The London Borough of Hounslow (Loading Places) (Amendment No.*) Order 20****

1. The London Borough of Hounslow proposes to make the above Order under the Road Traffic Regulation Act 1984.
2. The general effect of the above Order would be to introduce a goods vehicle only loading bay outside Nos. 333 Bath Road, Hounslow which would operate “at any time”, maximum stay of 40 minutes, no return for one hour.
3. Documents giving detailed information of the proposed Order can be viewed for a period of 21 days from the date of this Notice online at hounslow.gov.uk by typing in the term “traffic notices” in the search bar.
4. Any person wishing to comment on the proposed Order should send a statement in writing stating the grounds of the objection to the Assistant Director Transport, Parking & Environmental Strategy at the address above or by email to trafficorders@hounslow.gov.uk quoting the reference TMO/P036/20 to be received by no later than Wednesday, 18 November 2020.

Dated 28 October 2020

A handwritten signature in black ink, appearing to be 'Mark Frost', written over a faint rectangular box.

Mark Frost

Assistant Director Transport, Parking & Environmental Strategy

Traffic Management Order

20** No.**

The London Borough of Hounslow (Loading Places) (2009, No.1) (Amendment No.**) Order 20**

Made on ** ***** 20**

Coming into operation on ** ***** 20**

The Council of the London Borough of Hounslow, after consulting the Commissioner of Police of the Metropolis, in exercise of the powers conferred by section 6 and 124 of the Road Traffic Regulation Act 1984^a, and of all other enabling powers hereby make the following Order:

1. This Order may be cited as the London Borough of Hounslow (Loading Places) (2009, No. 1) (Amendment No.**) Order 20** and shall come into operation for all purposes on ** ***** 20**.
2. Without prejudice to the validity of anything done or to any liability incurred in respect of any act or omission before the coming into operation of this Order, the London Borough of Hounslow (Loading Places) Order 2009^b shall have effect as though:
 - a) the item numbered ** was added to Schedule 2 to that Order with the item similarly numbered and set out in the Schedule to this Order.

Dated this ** day of 20**

Assistant Director Transport, Parking & Environmental Strategy
(The officer appointed for this purpose)

Schedule

1. Item	2. Designated loading place	3. Permitted hours	4. Maximum stay	5. No return within
**	Bath Road, Hounslow , the north-east side, from a point opposite the north-western flank wall of No. 333 Bath Road , south-eastwards for a distance of 20 metres	At any time	40 minutes	1 hour

^a 1984 c.27

^b LBH 2009/04

EXPLANATORY NOTE

(This Note is not part of the Order, but is intended to indicate its general purport.)

This Order amends the Order of 2009 by introducing a new goods vehicle loading bay outside Nos.333 Bath Road, Hounslow.



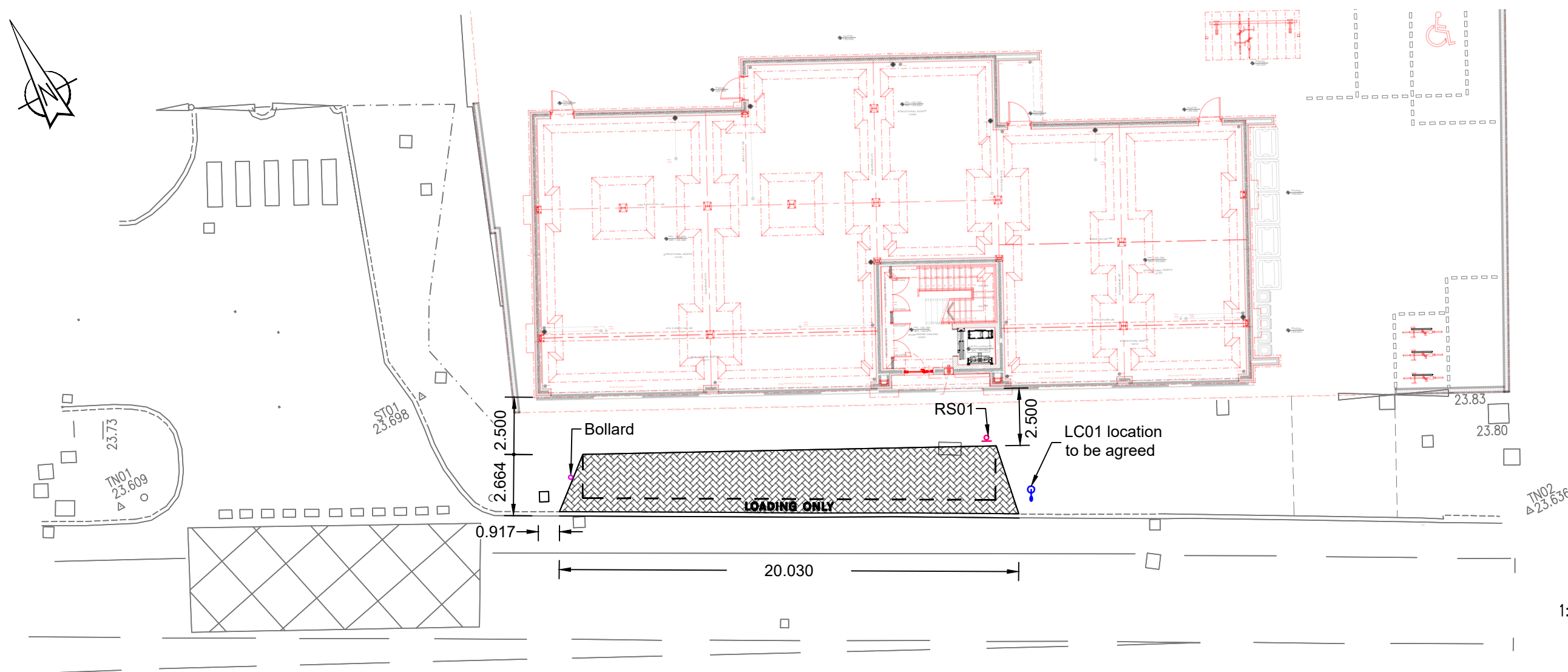
**London Borough
of Hounslow**

Proposed goods vehicle loading bay – Bath Road, Hounslow

STATEMENT OF REASONS

The Council is proposing to introduce a goods vehicle only loading bay outside No.333 Bath Road, Hounslow to provide a loading facility for the local shops. The loading bay will operate 'at any time, maximum stay 40 minutes, no return for one hour.

\\london02\X-Drive\Projects\A110000\A114612 - 333-335 Bath Road - Hounslow\50 Drawings\59 - Detailed Design\100 Series - General Arrangement\A114612-278-101_TrafficManagementOrder.dwg

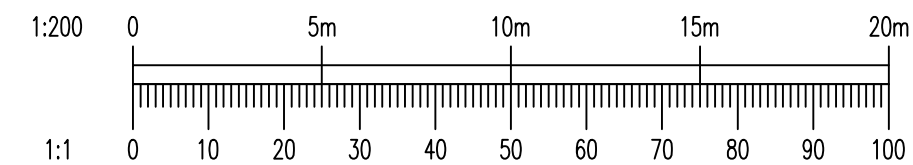


Key

New loading bay

LC01 New location of existing street lighting column

RS01 New traffic sign & post. Location to be agreed with London Borough of Hounslow



DISCLAIMERS
 1. The information contained in this drawing is based on a combination of OS and survey data provided by others and WYG shall not be liable for any inaccuracies or deficiencies.

GENERAL
 1. Do not scale from drawing.
 2. All dimensions are in metres, unless stated otherwise.
 3. This drawing to be read & printed in colour.
 4. This drawing to be read in conjunction with other contract drawings.
 5. Traffic sign to be designed in accordance with Traffic Signs Manual Chapter 3, Control of on-street parking, Section 4 Part 4 Item 5.

PRELIMINARY

REV	DETAILS	DRAWN BY	CHECKED BY	DATE
CLIENT: Sainsbury's Supermarket Ltd				
PROJECT: 333-335 Bath Road				
DRAWING TITLE: Traffic Management Order				
SCALES: 1:200		SHEET SIZE: A2		
DRAWN: CJA	CHECKED: RF	DATE: 16/09/2020		
11 th Floor 1 Angel Court London EC2R 7HJ t: 0207 250 7500 f: 0207 250 7501 e: transport@wyg.com				
DRAWING NUMBER: A114612-278-101				REVISION: -



Traffic Management Order

2009 No.4

The London Borough of Hounslow (Loading Places) Order 2009

Made on 27 April 2009

Coming into operation on 4 May 2009

ARRANGEMENT OF ARTICLES

PART I - PRELIMINARY

	Article
Citation and commencement	1
Revocation	2
Interpretation	3

PART II - DESIGNATION OF LOADING PLACES

Designation of loading places	4
Vehicles for which loading places are designated	5
Contraventions	6

PART III - SUPPLEMENTARY PROVISIONS

Manner of standing in a loading place	7
Power to suspend	8
Restriction on the use of a loading place	9
The moving of a vehicle in an emergency	10
Exemptions	11
Placing of traffic signs	12

Schedule 1 Loading places for passenger vehicles and goods vehicles

Schedule 2 Loading places for goods vehicles

The Council of the London Borough of Hounslow, after consulting the Commissioner of Police of the Metropolis, in exercise of the powers conferred by section 6 of the Road Traffic Regulation Act 1984^a, and of all other powers thereunto enabling hereby make the following Order:

^a 1984 c.27

PART I - PRELIMINARY

Citation and Commencement

1. This Order may be cited as the London Borough of Hounslow (Loading Places) Traffic Order 2009 and shall come into operation on 4 May 2009.

Revocation

2. Without prejudice to the validity of anything done or to any liability incurred in respect of any act or omission before the coming into operation of this Order the following Orders are hereby revoked:

The London Borough of Hounslow (Loading Places) (No.1) Traffic Order 1997
The London Borough of Hounslow (Loading Places) (No.1) Traffic Order 1998
The London Borough of Hounslow (Loading Places) (No.2) Traffic Order 1998
The London Borough of Hounslow (Loading Places) (No.1) Traffic Order 1999
The London Borough of Hounslow (Loading Places) (1998, No.1) (Amendment No.1) Traffic Order 1991
The London Borough of Hounslow (Loading Places) (No.1) Traffic Order 2000
The London Borough of Hounslow (Loading Places) (No.2) Traffic Order 2000
The London Borough of Hounslow (Loading Places) (No.1) Traffic Order 2001
The London Borough of Hounslow (Loading Places) (No.2) Traffic Order 2001
The London Borough of Hounslow (Loading Places) (No.1) Traffic Order 2002
The London Borough of Hounslow (Loading Places) (No.2) Traffic Order 2002
The London Borough of Hounslow (Loading Places) (No.1) Traffic Order 2003
The London Borough of Hounslow (Loading Places) (No.2) Traffic Order 2003
The London Borough of Hounslow (Loading Places) (No.3) Traffic Order 2003
The London Borough of Hounslow (Loading Places) (No.1) Traffic Order 2004
The London Borough of Hounslow (Loading Places) (No.2) Traffic Order 2004
The London Borough of Hounslow (Loading Places) (1998, No.1) (Amendment No.1) Traffic Order 2005
The London Borough of Hounslow (Loading Places) (No.2) Traffic Order 2005
The London Borough of Hounslow (Loading Places) (No.1) Traffic Order 2006
The London Borough of Hounslow (Loading Places) (No.2) Traffic Order 2006
The London Borough of Hounslow (Loading Places) (No.3) Traffic Order 2006
The London Borough of Hounslow (Loading Places) (No.4) Traffic Order 2006
The London Borough of Hounslow (Loading Places) (No.1) Traffic Order 2007
The London Borough of Hounslow (Loading Places) (2005, No.2) (Amendment No.1) Traffic Order 2007
The London Borough of Hounslow (Loading Places) (No.2) Traffic Order 2007

Interpretation

3. (1) In this Order, except where the context otherwise requires:

"civil enforcement officer" has the same meaning as in the Traffic Management Act 2004^b;

"Council" means the Council of the London Borough of Hounslow;

^b 2004 c.18

"driver" in relation to a vehicle waiting in a loading place means the person driving the vehicle at the time it was left in the loading place;

"enactment" means any enactment, whether public, general or local, and includes any order, byelaw, rule, regulation, scheme or other instrument having effect by virtue of an enactment;

"goods" means goods of any kind whether animate or inanimate and includes postal packets of any description; and "delivering" and "collecting" in relation to any goods includes checking the goods for the purpose of their delivery or collection;

"goods vehicle" means a motor vehicle or trailer constructed or adapted for use for the carriage or haulage of goods or burden of any description;

"loading place" means any area on a highway designated as such by Article 3 of this Order;

"owner", has the same meaning as in the Civil Enforcement of Parking Contraventions (England) General Regulations 2007^c;

"parking contravention" has the meaning as assigned to it in Part 1 of Schedule 7 of the Traffic Management Act 2004;

"passenger vehicle" means a motor vehicle (other than a motor cycle or invalid carriage) constructed or adapted solely for the carriage of not more than eight passengers (exclusive of the driver) and their effects and not drawing a trailer;

"permitted hours", in relation to a loading place, means the days and hours relating to that loading place as are specified in column 3 of Schedule 1 and 2;

"telecommunications system" has the same meaning as in the Telecommunications Act 1984^d;

- (2) Any reference in this Order to a numbered Article or Schedule shall, unless the context otherwise requires, be constructed as a reference to the Article or Schedule bearing that number in this Order.

PART II - DESIGNATION OF LOADING PLACES

Designation of loading places

4. (1) The areas of highway as described in column 2 of Schedule 1 and 2 are designated as a loading places during the permitted hours.
- (2) The limits of each loading place shall be indicated by means of road markings and road signs in accordance with the Traffic Signs Regulations and General Directions 2002.

^c SI.2007/3483

^d 1984 c.21

Vehicles for which loading places are designated

5. (1) Each loading place in Schedule 1 may be used, subject to the provisions of the Order, by such class of vehicles as are passenger vehicles or goods vehicles.
- (2) Each loading place in Schedule 2 may be used, subject to the provisions of the Order, by such class of vehicles as are goods vehicles.

Contravention

6. (1) If a vehicle is left in a loading place in Schedule 1 and 2 without complying with the requirements of this Order, then a contravention of this Order and a parking contravention shall be deemed to have occurred.

PART III - SUPPLEMENTARY PROVISIONS

Manner of standing in a loading place

7. (1) Every vehicle using a loading place shall stand so that:
 - (a) that the longitudinal axis of the vehicle stands parallel to the edge of the carriageway; and
 - (b) that the distance between the edge of the carriageway and the nearest wheel of the vehicle is not more than 300mm.

Power to suspend the use of a loading place

8. (1) Any person duly authorised by the Council may suspend the use of a loading place or any part thereof whenever they consider such suspension reasonably necessary:
 - (a) for the purpose of facilitating the movement of traffic or promoting its safety;
 - (b) for the purpose of any building operation, demolition or excavation adjacent to the loading place, the maintenance, improvement or reconstruction of the highway or the cleansing of gullies in or adjacent to the loading place, the laying, erection, alteration or repair in or adjacent to the loading place of any sewer or of any main, pipe or apparatus for the supply of gas, water or electricity or any telecommunication system or the placing, maintenance or removal of any traffic sign;
 - (c) for the convenience of occupiers of premises adjacent to the loading place on any occasion of the removal of furniture to or from one office or dwelling house adjacent to the loading place from or to a depository, another office or dwelling house;
 - (d) on any occasion on which it is likely by reason some special attraction that any street will be thronged or obstructed; or
 - (e) for the convenience of occupiers of premises adjacent to the loading place at times of weddings or funerals, or on other special occasions.

- (2) A police constable in uniform may suspend for not longer than seven days the use of a loading place or any part thereof whenever he considers suspension reasonably necessary for the purposes of facilitating the movement of traffic or promoting its safety.
- (3) Any person or police constable suspending the use of a parking place or any part thereof in accordance with the provisions of paragraph (1) or (2) of this Article shall place or cause to be placed in or adjacent to that loading place or that part thereof, as the case may be, a traffic sign indicating that the waiting and loading of vehicles is prohibited.
- (4) The driver of a vehicle shall not cause or permit it to wait in a loading place during such period as there is in or adjacent to that loading place a traffic sign placed in pursuance of paragraph (3) of this Article, provided that nothing in this paragraph shall apply to:
 - (a) in respect of any vehicle being used for Fire Brigade, Ambulance or Police purposes: or
 - (b) to anything done with the permission of the person suspending the use of the loading place thereof in pursuance of paragraph (1) or (2) of this Article.

Restriction on the use of a loading place

9. (1) The driver of a vehicle shall not cause or permit it to wait in the loading place for longer than is necessary for the purpose of loading or unloading goods only and in any event for no longer than the maximum period permitted relating to that loading place as is specified in column 4 of Schedule 1 and 2.
- (2) The driver of a vehicle which has left a loading place, after waiting thereon, shall not, during the permitted hours relating to that loading place, cause or permit such vehicle to wait again in that loading place within the period of time relating to that loading place as is specified in column 5 of Schedule 1 and 2.
- (3) During the permitted hours, no person shall use any loading place or any vehicle while it is in a loading place in connection with the sale or offering or exposure for sale of any goods to any person, in or near the loading place or in connection with the selling or offering for sale of his or her skill in handicraft or their services in any other capacity.

The moving of a vehicle from a loading place in an emergency

10. (1) Any person duly authorised by the Council, a Police Constable in uniform or a Traffic Warden may move or cause to be moved, in case of an emergency, to any place considered fit, any vehicle left unattended in a loading place.

Exemptions

11. (1) Notwithstanding the foregoing provisions of this Order any vehicle may wait in a loading place if:
 - (b) the vehicle is being used for fire brigade, ambulance or police purposes;

- (c) the vehicle, not being a passenger vehicle, is being used in the service of a local authority in pursuance of statutory powers or duties provided that in all circumstances it is reasonably necessary in the exercise of such powers or in the performance of such duties for the vehicle to wait in the loading place.
- (d) the vehicle is waiting because the driver is prevented from proceeding by circumstances beyond their control or the vehicle is waiting because it is necessary to do so in order to avoid an accident; or
- (e) the vehicle is waiting only for so long as may be necessary to enable it to be used in connection with the removal of any obstruction to traffic.

Placing of traffic signs, etc.

12. (1) The Council shall:

- (a) place and maintain traffic signs indicating the limits of each loading place;
- (b) place and maintain in or in the vicinity of each loading place referred to in Schedule 1 and 2 traffic signs indicating that the loading place may be used during the permitted hours relating to that loading place by vehicles specified in Article 5; and
- (c) carry out such other work as is reasonably required for the purposes of the satisfactory operation of the loading place.

Dated this twenty-seventh day of April 2009.



Director of Environment
(The Officer appointed for this purpose)

SCHEDULE 1
(loading places for passenger vehicles and goods vehicles)

1. Item	2. Designated loading place	3. Permitted hours	4. Maximum stay	5. No return within
1	Chiswick High Road, Chiswick the north side from a point 17 metres east of a point opposite the party wall of Nos. 476 and 478 Chiswick High Road eastwards for a distance of 16 metres.	Mon-Sat 7am-7pm	20 minutes	1 hour
2	Chiswick High Road, Chiswick the north side from a point 2 metres east of a point opposite the party wall of Nos. 488 and 490 Chiswick High Road eastwards for a distance of 10.5 metres.	Mon-Sat 7am-7pm	20 minutes	1 hour
3	Spring Grove Road, Isleworth the south-west side from a point 10 metres south-east of a point opposite the common boundary of No. 233 Spring Grove Road and No. 1 Clifton Road south-eastwards for a distance of 12 metres.	Mon-Sat 7am-7pm	20 minutes	1 hour

SCHEDULE 2
(loading places for goods vehicles)

1. Item	2. Designated loading place	3. Permitted hours	4. Maximum stay	5. No return within
1	Bath Road, Hounslow the north-east side between the western wall of Yates Wine Lodge, No.1 Bath Road, Hounslow south-eastwards for a distance of 29 metres.	at any time	40 minutes	1 hour
2	Bath Road, Hounslow the south-west side in the lay-by of the road fronting Nos. 266 and 272 Bath Road, Hounslow, from a point 9.6 metres north-west of the south-eastern flank wall of No. 266 Bath Road, Hounslow north-westwards for a distance of 22 metres.	at any time	20 minutes	1 hour
3	Boston Park Road, Brentford the north-west side from a point 9.5 metres south-west of the north-eastern wall of "The Globe" public house, Windmill Road, Brentford south-westwards for a distance of 6 metres.	Mon-Fri 7am-7pm	20 minutes	1 hour
4	Chiswick High Road, Chiswick the north side from a point 2 metres east of a point opposite the western wall of No. 560 Chiswick High Road westwards for a distance of 16 metres.	Mon-Sat 7am-7pm	20 minutes	1 hour
5	Chiswick High Road, Chiswick the south side from a point 1 metre west of the eastern boundary wall of No. 305 Chiswick High Road westwards for a distance of 7 metres.	Mon-Sat 7am-7pm	20 minutes	1 hour
6	Chiswick High Road, Chiswick the south side between a point 7.4 metres east of the eastern kerb-line of Airedale Avenue and a point 19.4 metres east of that kerb-line.	at any time	20 minutes	1 hour
7*	Chiswick High Road, Chiswick the north side from a point opposite the party wall of Nos. 164 and 166 Chiswick High Road eastwards for a distance of 15 metres. <i>Moved to Sch. 1 2010/21</i>	at any time	20 minutes	1 hour
8*	Chiswick High Road, Chiswick the north side of the service road linking Devonshire and Linden Gardens, from a point 3 metres east of a point opposite the party wall of Nos. 175 and 179 Chiswick High Road eastwards for a distance of 3 metres - vehicles to stand at 45 degrees to the kerb. <i>* description amended - 2011/46</i>	Mon-Sat 7am-7pm	20 minutes	1 hour
9	Chiswick High Road, Chiswick the southeast side of the service road fronting Nos.155 to 165 Chiswick High Road, W4 between a point opposite the north-eastern wall of No.155 Chiswick High Road and a point opposite the south-western wall of No.165 Chiswick High Road, W4.	Mon-Sat 7am-7pm	20 minutes	1 hour
10	Chiswick High Road, Chiswick the north side from a point 4.00 metres east of the a point opposite the party wall of Nos. 464 and 466 Chiswick High Road eastwards for a distance of 9.00 metres.	at any time	20 minutes	1 hour
11	Chiswick High Road, Chiswick the north side from a point 3 metres east of the eastern kerb-line of Thorney Hedge Road eastwards for a distance of 12 metres.	Mon-Sat 7am-7pm	20 minutes	1 hour
12*	Chiswick Lane, Chiswick the west side from a point in-line with the north-western wall of No.2 Chiswick Lane southwards for a distance of 17 metres. <i>* description amended by 2012/77</i>	Mon-Sat 7am-7pm	20 minutes	1 hour
13	Clarence Road, Chiswick the south-west side from a point 2 metres south-east of the north-western wall of No. 525 Chiswick High Road to a point 3 metres south-east of the south-eastern wall of No.525 Chiswick High Road.	Mon-Sat 7am-7pm	20 minutes	1 hour
14	Devonshire Road, Chiswick the north-east side from a point opposite the party wall of Nos.13/15 Devonshire Road south-eastwards for a distance of 17.9 metres.	Mon-Sat 7am-7pm	20 minutes	1 hour

SCHEDULE 2 (continued)

1. Item	2. Designated loading place	3. Permitted hours	4. Maximum stay	5. No return within
15	Devonshire Road, Chiswick the south-west side from a point 1 metre north-west of a point opposite the party wall of No. 167 Chiswick High Road and No. 1b Devonshire Road to a point 1 metre south-east of a point opposite the party wall of Nos. 1a/3a Devonshire Road.	Mon-Sat 7am-7pm	20 minutes	1 hour
16	Fair Street, Hounslow the east side from a point 2 metres north of a point opposite the southern boundary wall of Nos. 147 to 149 High Street, Hounslow northwards for a distance of 16 metres.	at any time	20 minutes	1 hour
17	High Street, Brentford the north-east side from a point opposite the party wall of Nos. 406 and 407 High Street, Brentford north-eastwards for a distance of 12 metres.	Mon-Sat 10am- 4pm	20 minutes	1 hour
18	High Street, Brentford the north-east side from a point opposite the north-eastern wall of No. 411 High Street, Brentford south-westwards for a distance of 7 metres.	Mon-Sat 10am- 4pm	20 minutes	1 hour
19	High Street, Hounslow the south side from a point opposite the party wall of Nos. 131 and 133 High Street, Hounslow eastwards for a distance of 20 metres.	at any time	20 minutes	1 hour
20	High Street, Hounslow the south side from a point opposite the party wall of Nos. 177 and 179 High Street, Hounslow westwards for a distance of 20 metres.	at any time	20 minutes	1 hour
21	Hounslow Road, Feltham the north-west side from a point opposite the south-western boundary of No. 17 Station Parade, Hounslow Road, Feltham north-eastwards for a distance of 12 metres.	Mon-Sat 10am- 4pm	20 minutes	1 hour
22 *	Kingsley Road, Hounslow the south-west side between a point opposite the common boundary of Nos. 4 and 6 Kingsley Road and a point opposite the common boundary of Nos. 6a/8 Kingsley Road. <i>- moved to Sch 1 - 2011/34.</i>	7am- midnight	20 minutes	1 hour
23	Lampton Road, Hounslow the north-east side from a point 27 metres north-east of the north-eastern wall of No. 4 Lampton Road north-westwards for a distance of 15 metres.	at any time	40 minutes	1 hour
24 *	Linden Gardens, Chiswick the north-east side of the south-west arm, between a point 600 millimetres south-east of the north-western wall of No. 225a Chiswick High Road south-eastwards for a distance of 9.4 metres. <i>- description amended - 2011/14</i>	Mon-Sat 7am-7pm	20 minutes	1 hour
25	London Road, Brentford the south-east side between a point 5 metres south-west of the south-western wall of No. 11 London Road, Brentford and a point 12 metres south-west of that wall.	Mon-Sat 10am- 4pm	20 minutes	1 hour
26 *	London Road, Isleworth the north-west side from a point opposite the party wall of Nos. 542/544 London Road, Isleworth north-eastwards for a distance of 15 metres. <i>- amended, descrypt - moved to sch 1 - 2010/25</i>	Mon-Sat 7am-7pm	20 minutes	1 hour
27	Market Place, Brentford the south-west side from a point 5 metres south-east of the north-western wall of Brentford Magistrates Court, south-eastwards for a distance of 16 metres.	at any time	20 minutes	1 hour
28	Rosemary Avenue, Hounslow the south-east side from a point 6 metres north-east of a point opposite the south-western boundary of No. 302 Bath Road, Hounslow north-eastward for a distance of 18 metres.	at any time	20 minutes	1 hour

SCHEDULE 2 (continued)

1. Item	2. Designated loading place	3. Permitted hours	4. Maximum stay	5. No return within
29	South Street, Isleworth the south-east side from a point 5 metres east of the eastern wall of Nos.28 and 30 Shrewsbury Walk, South Street eastwards for a distance of 20 metres.	Mon-Sat 8am- 6.30pm	20 minutes	1 hour
30	South Street, Isleworth the north-west side between a point 6 metres south-west of the party wall of No.2 South Street and No.1 Upper Square and a point opposite the south-western wall of No.6 South Street.	Mon-Sat 8am- 6.30pm	20 minutes	1 hour
31	Stile Hall Gardens, Chiswick the north-east side from a point 4 metres south-east of the north-western wall of No. 10 Stile Hall Parade to a point opposite the south-eastern wall of No.10 Stile Hall Parade.	Mon-Sat 7am-7pm	20 minutes	1 hour
32	Sutton Court Road, Chiswick the north-east side in the lay by fronting Nos. 184- 192 Sutton Court Road, from a point 4 metres north-west of a point opposite the south-eastern wall of No. 188 Sutton Court Road north-westwards for a distance of 9.2 metres.	at any time	20 minutes	1 hour
33	Thornbury Road, Isleworth the south-west side from a point 16.5 metres north-west of the north-western kerb-line of London Road, Isleworth north-westwards for a distance of 12 metres.	Mon-Sat 7am-7pm	20 minutes	1 hour
34	Twickenham Road, Isleworth the west side between a point 2 metres south of the party wall of No.229 and 231 Twickenham Road, Isleworth and a point 1 metre south of the northern wall of No.229 Twickenham Road, Isleworth.	Mon-Sat 8am- 6.30pm	20 minutes	1 hour
35*	The unnamed road which lies between Nos. 174 and 178 High Street Hounslow, the east side from a point 7 metres north of the southern boundary wall of No.174 High Street, Hounslow northwards for a distance of 12 metres. <i>revoked by 2012/2</i>	at any time	20 minutes	1 hour
36	Upper Square, Isleworth the south-west side from a point 1 metre south-east of the north-western wall of No. 18 Upper Square south-eastwards for a distance of 11 metres.	Mon-Sat 8am- 6.30pm	20 minutes	1 hour
37 *	Vicarage Farm Road, Hounslow the south-east side from a point 2.7 metres south-west of the north-eastern wall of No.331 Vicarage Farm Road south-westwards for a distance of 12 metres. <i>* moved to Sch 1 - 2011/19</i>	at any time	20 minutes	1 hour
38	Vicarage Farm Road, Hounslow the north-west side from a point 5 metres south-west of a point opposite the common boundary of Nos.60 and 62 Vicarage Farm Road north-eastwards for a distance of 10 metres.	at any time	20 minutes	1 hour
39	Woodlands Road, Isleworth the south-east side from a point 1 metre north-east of a point opposite the south-western wall of No. 1a Woodlands Road south-westwards for a distance of 12 metres.	Mon-Sat 7am-7pm	20 minutes	1 hour

EXPLANATORY NOTE

(This Note is not part of the Order, but is intended to indicate its general purport.)

The Hounslow (Loading Places) Order 2009 consolidates into a single Order the various Loading Places Orders. The Order also allows for passenger vehicles as well as goods vehicles to use those loading places designated in Schedule 1.

** Further additions to Loading TMO can be found on the attached TMO amendment list **

TMO AMENDMENT LIST

AREA: BOROUGH WIDEBASE TMO NO: 2009/04BASE ORDER TITLE : The London Borough of Hounslow (Loading Places) Order 2009

Amendment No.	TMO No.	Description of Amendment
1.	2009/50	No. 40 added to Sch 2 (Thornbury Rd, Isleworth) Revoked by 2012/21
2.	2009/65	No. 41 added to Sch 2 (Holloway St, Hounslow)
3.	2010/12	No. 42 } 43 } added to Sch. 2 (All located in) 44 } High St, Brentford)
4.	2010/21	No 7 moved from Sch. 2 to Sch 1 (Chiswick High Rd) No. 45* added to Sch 1 (Windmill Rd, W4) ^{* Amended} by 2011/11
5.	2010/25	amended No. 26 moved from Sch. 2 to Sch 1 (London Rd, Isleworth) No. 46 added to Sch. 2 (Algar Rd, Isleworth)
6.	2010/32	No 47 added to Sch. 2 (Brook Lane N, Brentford) Revoked by 2013/45
7.	2010/53	No. 48 added to Sch 1 (Staines Rd, Hounslow)
8.	2011/14	No. 24 (description amended) (Linden Grans, W4) No. 45 (description amended) (Windmill Rd, W4)
9.	2011/19	No. 37 moved from Sch 2 to Sch. 1 (Vicarage Farm Rd)
10.	2011/30	No. 49 added to Sch 2 (Church Rd, Heston)

TMO AMENDMENT LIST

AREA: BOROUGH WIDEBASE TMO NO: 2009/04BASE ORDER TITLE: LBH (Leaving Places) Order 2009

Amendment No.	TMO No.	Description of Amendment
11.	2011/34	No. 22 was moved from Sch. 2 to Sch. 1 (Kingley Rd, Hounslow)
12.	2011/36	No. 50 added to Sch. 2 (Bath Rd, Hounslow)
13.	2011/46	No. 8 - description amended (Chiswick High Rd)
14.	2011/66	No. 51 added to Sch. 2 (Hanworth Rd, Hounslow)
15.	2012/02	No. 52 + 53 added to Sch 2 (Staines Rd, Hounslow)
16.	2012/11	No. 54 + 55 added to Sch 1 (Goat Wharf, Brentford) High St, Brentford No. 56 + 57 added to Sch 2 (Town Meadow High St, Brentford)
17	2012/21	No. 58, 59, 60 added to Sch. 2 item 35 + 40 revoked.
18.	2012/29	No. 61 added to Sch. 2 (Nath Dine, Hounslow)
21.	2013/17	No. 62 added to Sch. 2 (Part 12, Chiswick)