



London Borough of Hounslow

Deposited Documents – Reference TMO/E001/20

Held on deposit online

Placed on deposit on Wednesday, 22 April 2020

End of consultation period is 22 October 2021

Experimental disabled parking bays & disabled permit parking bays

Contents:

1. **Notice of Making dated 22 April 2020**
2. **Experimental Traffic Management Order**
 - A. The London Borough of Hounslow (No. 1) Experimental Order 2020
3. **Plan**
4. **Statement of Reasons**
5. **Existing Traffic Management Orders**
 - A. The London Borough of Hounslow (Free Parking Places) (Disabled Persons) (No. 1) Order 2008
 - B. The London Borough of Hounslow (No.1) Experimental Order 2020

Any person wishing to comment on or object to the order should follow the instructions on the Notice.

Any queries regarding these deposited documents should be sent by email to trafficorders@hounslow.gov.uk or alternatively a voicemail can be left on extension 3322.

These documents may be destroyed on or after 30 October 2021

Experimental disabled parking bays & disabled permit parking bays

A. The London Borough of Hounslow (No.1) Experimental Order 2020

1. The London Borough of Hounslow hereby gives Notice that on 22 April 2020 it made the above Order under Section 9 of the Road Traffic Regulation Act 1984.
2. The general effect of the Order, which comes into effect on 30 April 2019, will be to:
 - (a) introduce disabled parking bays as detailed in Schedule 1 to this Notice; and
 - (b) introduce disabled permit parking bays as detailed in Schedule 2 to this Notice.
3. Documents giving further information on the Order can be viewed for a period of 18-months from the date of this notice:
 - (a) online at hounslow.gov.uk by typing in the term “traffic notices” in the search bar; or
 - (b) by emailing trafficorders@hounslow.gov.uk or telephoning 0208 583 3322 and requesting a copy.
4. The Order provides for the Assistant Director Transport, Parking & Environmental Strategy, or a person authorised by him, to modify or suspend the Order or any provision of it, if it appears to him essential in the interests of: the expeditious, convenient and safe movement of traffic; or providing suitable and adequate on-street parking facilities.in,.
5. If any person wishes to question the validity of the Order or any of its provisions on the grounds that it or they are not within the powers conferred by the Road Traffic Regulation Act, or that any requirement of the Act, or of any instrument made under the Act has not been complied with, that person may, within 6 weeks from the date on which the Order is made, apply for the purpose to the High Court.
6. If the provisions of the Order continue in operation for a period of at least six months, the Council will consider in due course whether the provisions of the experimental Order should be continued in force indefinitely by means of a permanent Order. Any person desiring to object to the making of an Order for the purpose of such indefinite continuation may, within six months of the experimental Order coming into operation, send a statement in writing stating the grounds of the objection to the Assistant Director Transport, Parking & Environmental Strategy at the above address or by email to trafficorders@hounslow.gov.uk quoting the reference TMO/E001/20.

Dated 22 April 2019



Mark Frost

Assistant Director Transport, Parking & Environmental Strategy

Schedule 1

28 Burnaby Gardens, Chiswick; 7 St Leonard’s Gardens, Heston; 27 New Road, Brentford, (disabled space for No.50) and 8 Windsor Road, Hounslow.

Schedule 2

66 Hanover Avenue, Feltham; 29 Belmont Terrace, Chiswick and opposite 24 Westbury Road, Feltham



Traffic Management Order

2020 No.25

The London Borough of Hounslow (No.1) Experimental Order 2020

Made on 22 April 2020

Coming into operation on 30 April 2020

The London Borough of Hounslow, after consulting the Commissioner of Police of the Metropolis, in exercise of the powers conferred by section 9 of the Road Traffic Regulation Act 1984^a, as amended, and of all other enabling powers hereby make the following Order:

1. This Order shall come into operation on 30 April 2020 and may be cited as the London Borough of Hounslow (No.1) Experimental Order 2020.
2. In this Order,
"the Order of 2008" means the London Borough of Hounslow (Free Parking Places) (Disabled Persons) (No. 1) Order 2008^b; and
"the Order of 2016" means The London Borough of Hounslow (Free Permit Parking Places) (Disabled Persons) Order 2016^c
3. Without prejudice to the validity of anything done or to any liability incurred in respect of any act or omission before the coming into operation of this Order, the Order of 2008, shall have effect as though:
 - (a) the items numbered 644, 645, 646 and 647 were added to Schedule 2 to that Order as detailed and set out in the Schedule to this Order
4. Without prejudice to the validity of anything done or to any liability incurred in respect of any act or omission before the coming into operation of this Order, the Order of 2016, shall have effect as though:
 - (a) the items numbered 57, 58 and 59 were added to the Schedule to that Order as detailed and set out in the Schedule to this Order
5. In pursuance of Section 10(2) of the Road Traffic Regulation Act 1984, the Assistant Director Transport, Parking & Environmental Strategy, or a person authorised by him, may, modify or suspend the Order or any provision of it, if it appears to him essential in the interests of: the expeditious, convenient and safe movement of traffic; or providing suitable and adequate on-street parking facilities..

Dated this twenty-second day of April 2020

Mark Frost

Assistant Director Transport, Parking & Environmental Strategy
(the officer appointed for the purpose)

^a 1984 c.27

^b LBH 2008/9

^c LBH 2016/7

Schedule 1

1. No. of parking place	2. Designated parking place	3. Special manner of standing
644	Burnaby Gardens, Chiswick , the east side, from a point 0.6 metre north of the southern flank wall of No. 28 Burnaby Gardens northwards for a distance of 5 metres.	-
645	St Leonard's Gardens, Heston , the south-west side, from a point 3 metres south-east of the south-eastern flank wall of No. 7 St Leonard's Gardens north-westwards for a distance of 5.4 metres.	-
646	New Road, Brentford , the north-west side, from the north-eastern flank wall of No. 27 New Road, south-westwards for a distance of 5 metres	-
647	Windsor Road, Hounslow , the north-east side, from a point 3.1 metres north-west of the north-western flank wall of No. 8 Windsor Road south-eastwards for a distance of 5 metres.	

Schedule 2

1. No. of parking place	2. Designated parking place	3. Permit No.
57	Hanover Avenue, Feltham , the north-east side, from a point 0.8 metre south-east of the party wall of Nos. 68/66 Hanover Avenue south-eastwards for a distance of 5.2 metres - Part parking on footway 0.9 metre & 1.1 metres on carriageway	D166
58	Belmont Terrace, Chiswick , the south side, from a point 1 metre west of the party wall of Nos. 27/29 Belmont Terrace eastwards for a distance of 5.1 metres	D167
59	Westbury Road, Feltham , the south-west side, from the opposite side south-east of the north-western flank wall of Nos. 22/24 Westbury Road south-eastwards for a distance of 5 metres - Part parking on footway 1 metre & 1 metres on carriageway	D168

EXPLANATORY NOTE

(This Note is not part of the Order, but is intended to indicate its general purport.)

This experimental Order introduces disabled parking bays outside 28 Burnaby Gardens, Chiswick; 7 St Leonards Gardens, Heston; 8 Windsor Road, Hounslow and 27 New Road, Brentford as well as disabled permit parking bays outside 66 Hanover Avenue, Feltham; 29 Belmont Terrace, Chiswick and opposite 22 Westbury Road, Feltham

TRSGD 2002 - Sign 660.7 - Permit Holders & P&D
 Width 327 - Height 324 x-height 15

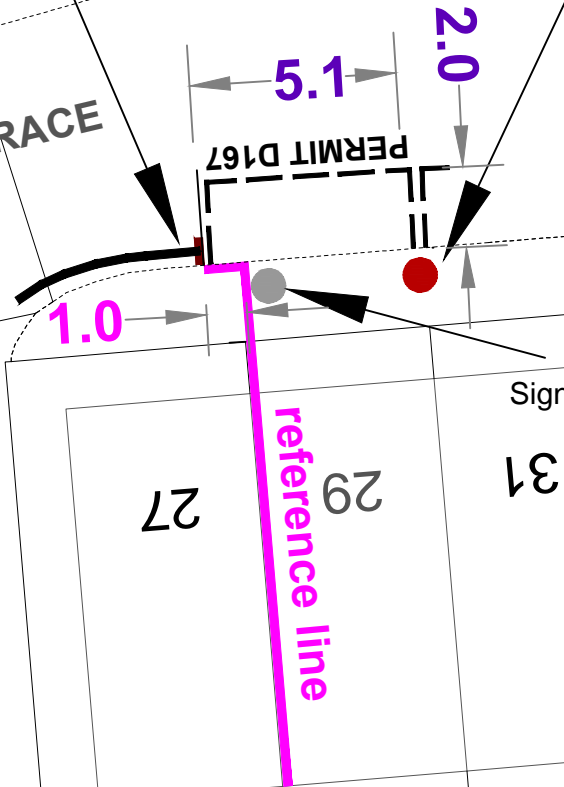


EXISTING Single Yellow Line.

Proposed disabled permit parking space
 TRSGD 2002 - Sign 661A - Disabled
 Width 255 - Height 235 x-height 15

BELMONT TERRACE

BELMONT GROVE



Remove both the Existing Post & CPZ Sign & RE-USE CPZ Sign with an arrow on the New Post.

This map is based upon Ordnance Survey material with the permission of Ordnance Survey on behalf of the Controller of Her Majesty's Stationery Office © Crown copyright. Unauthorised reproduction infringes Crown copyright and may lead to prosecution or civil proceedings. London Borough of Hounslow 100019263 2020

Drawing Status					
Drawn	Approved	Date	Scale	Size	
Inder	IS	March 2020	N.T.S	A4	
Dwg No					Rev
Rev	Date	Description			

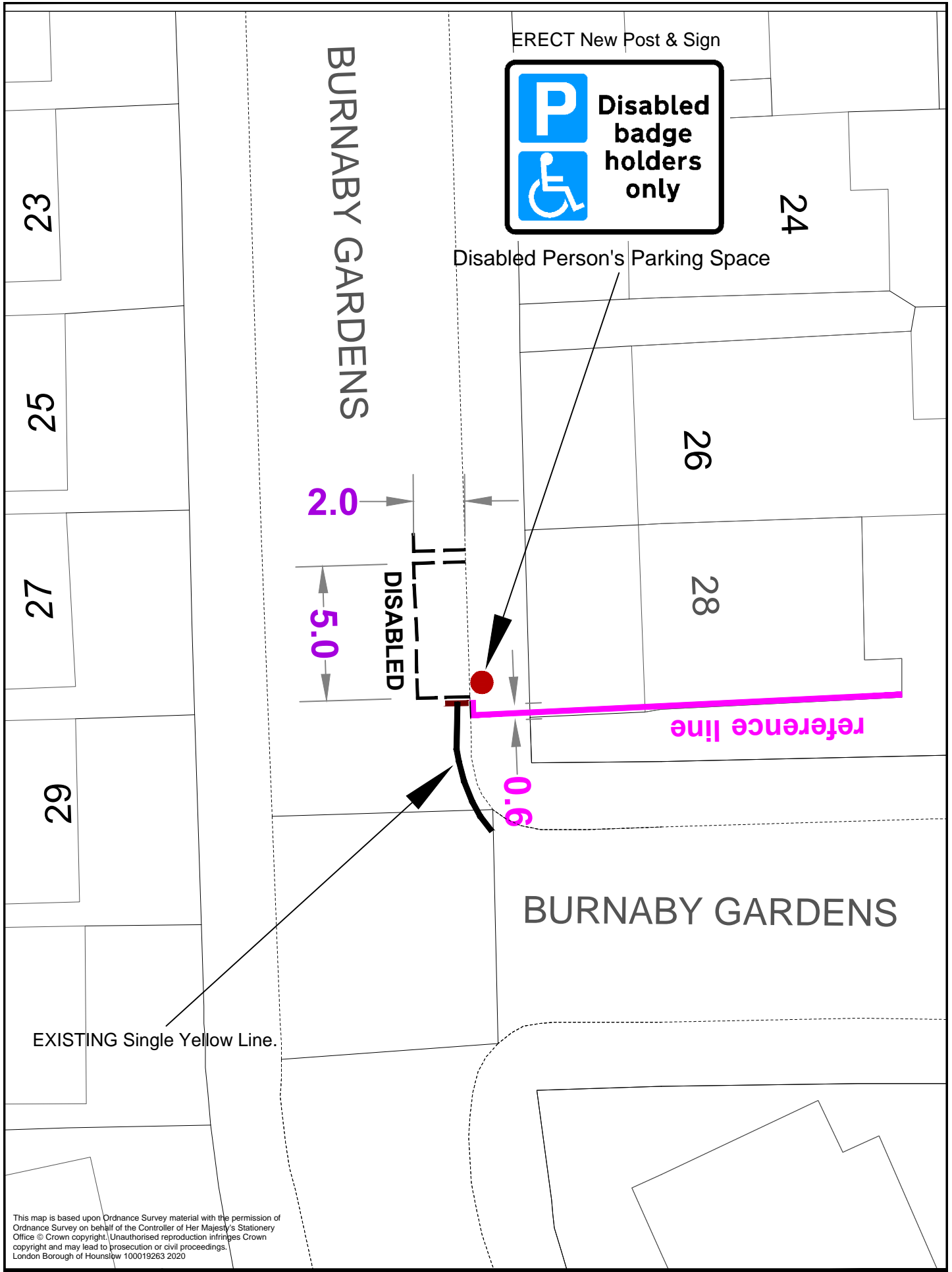
**29 Belmont Terrace,
 Chiswick, W4 5UN**

Proposed disabled parking space

Mark Frost, Assistant Director Transport,
 Parking & Environmental Strategy
 Customer Relations, Environment & Culture Directorate,
 The Civic Centre, Lampton Road
 Hounslow, TW3 4DN

Client:





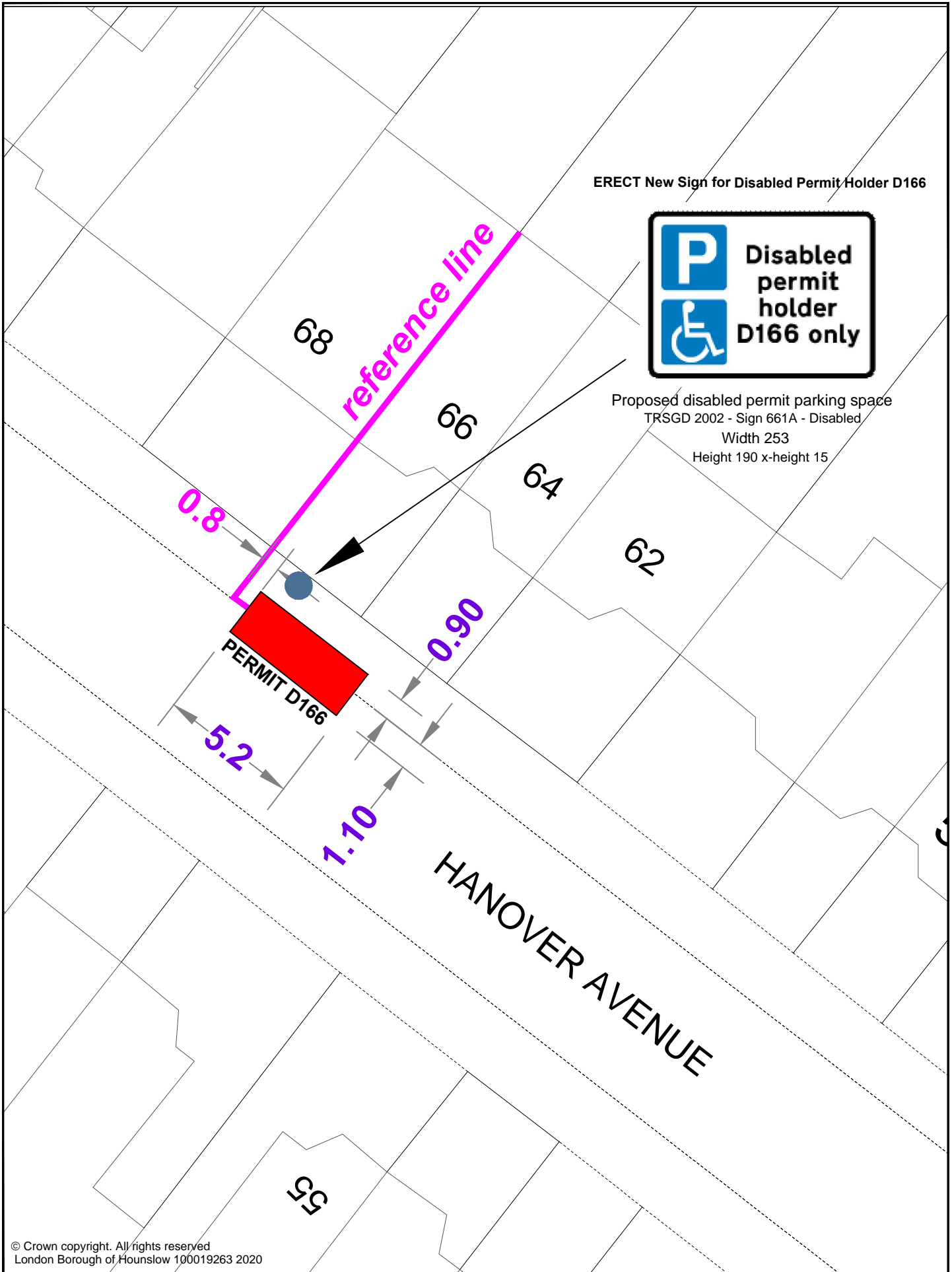
This map is based upon Ordnance Survey material with the permission of Ordnance Survey on behalf of the Controller of Her Majesty's Stationery Office © Crown copyright. Unauthorised reproduction infringes Crown copyright and may lead to prosecution or civil proceedings. London Borough of Hounslow 100019263 2020

		Drawing Status				28 Burnaby Gardens, Chiswick, W4 3DP		Mark Frost, Assistant Director Transport, Parking & Environmental Strategy Customer Relations, Environment & Culture Directorate, The Civic Centre, Lampton Road Hounslow, TW3 4DN	
Drawn	Approved	Date	Scale	Size	Proposed disabled parking space			Client:	
Inder	IS	March 2020	N.T.S	A4					
Drg No		Rev							
Rev	Date	Description							

ERECT New Sign for Disabled Permit Holder D166



Proposed disabled permit parking space
 TRSGD 2002 - Sign 661A - Disabled
 Width 253
 Height 190 x-height 15



© Crown copyright. All rights reserved
 London Borough of Hounslow 100019263 2020



Drawing Status					
Drawn	Approved	Date	Scale	Size	
Inder	IS	March 2020	N.T.S	A4	
Dwg No					Rev
Rev	Date	Description			

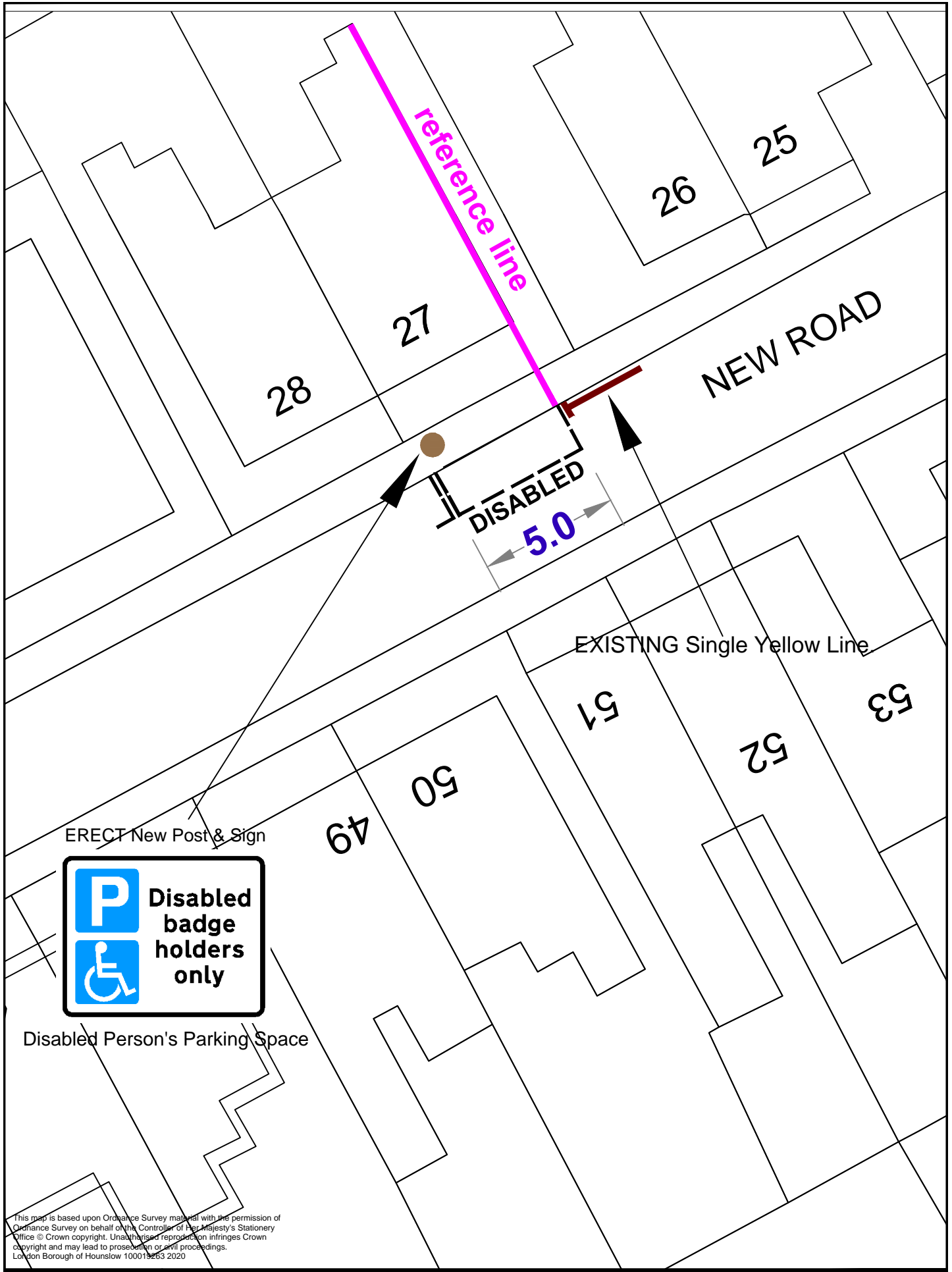
**66 Hanover Avenue,
 Feltham, TW13 4JP**

Proposed disabled permit parking space

Mark Frost, Assistant Director Transport,
 Parking & Environmental Strategy
 Customer Relations, Environment & Culture Directorate,
 The Civic Centre, Lampton Road
 Hounslow, TW3 4DN

Client



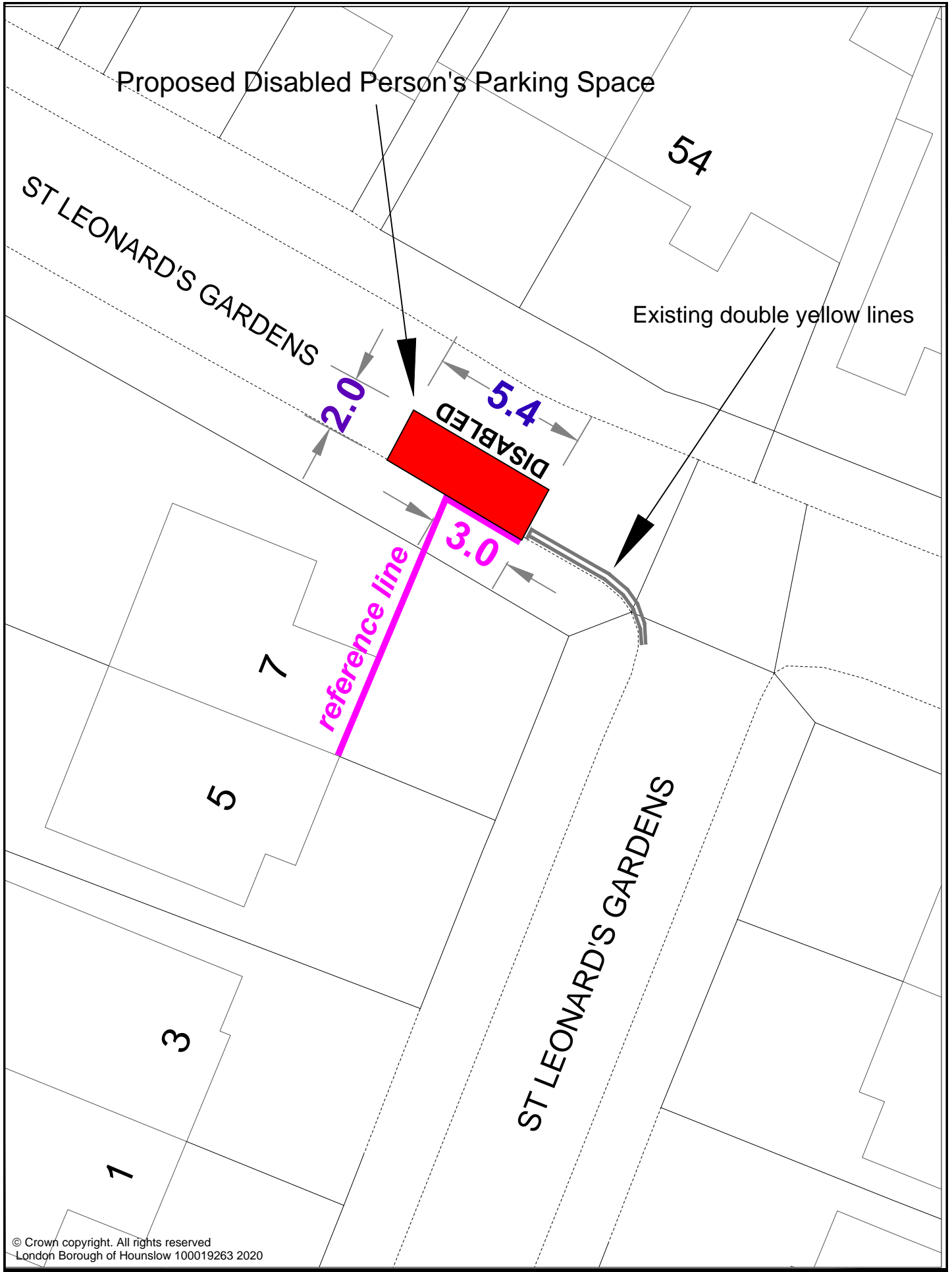
ERECT New Post & Sign



Disabled Person's Parking Space

This map is based upon Ordnance Survey material with the permission of Ordnance Survey on behalf of the Controller of Her Majesty's Stationery Office © Crown copyright. Unauthorised reproduction infringes Crown copyright and may lead to prosecution or civil proceedings. London Borough of Hounslow 100019263 2020

Drawing Status		27 New Road, Brentford, TW8 0NX				<small>Mark Frost, Assistant Director Transport, Parking & Environmental Strategy Customer Relations, Environment & Culture Directorate, The Civic Centre, Lampton Road Hounslow, TW3 4DN</small>	
Drawn	Approved	Date	Scale	Size	Proposed disabled parking space disabled space for No.50 New Road.		
Inder	IS	March 2020	N.T.S	A4			
Drg No		Rev		<small>Client: London Borough of Hounslow</small>			
Rev	Date	Description					



© Crown copyright. All rights reserved
 London Borough of Hounslow 100019263 2020

Drawing Status					
Drawn	Approved	Date	Scale	Size	
Inder	IS	March 2020	N.T.S	A4	
Dwg No					Rev
Rev	Date	Description			

**7 St Leonards Gardens,
 Heston, TW5 9DG**

Proposed disabled parking space

Mark Frost, Assistant Director Transport,
 Parking & Environmental Strategy
 Customer Relations, Environment & Culture Directorate,
 The Civic Centre, Lampton Road
 Hounslow, TW3 4DN

Client




WESTBURY ROAD

28
26

24
22

20
18

reference line

1.0

PERMIT D168

5.0

1.0

ERECT New Post & Sign for Disabled Permit Holder D168



Proposed disabled permit parking space
TRSGD 2002 - Sign 661A - Disabled
Width 253
Height 190 x-height 15

© Crown copyright. All rights reserved
London Borough of Hounslow 100019263 2020

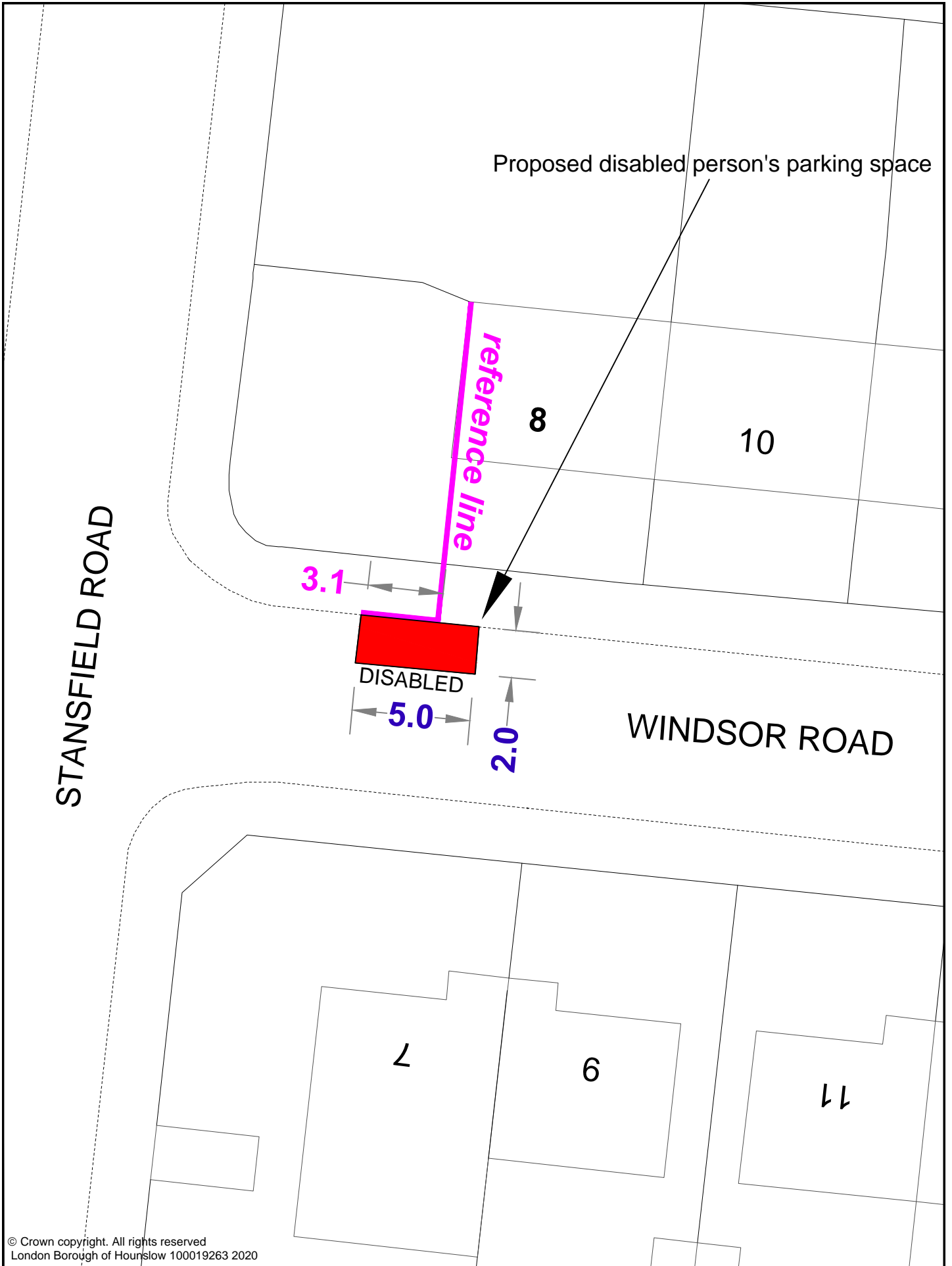
Opposite side of Nos. 22/24 Westbury Road,
Feltham, TW13 5HQ

Proposed disabled permit parking space
for No.24 Westbury Road, Feltham



Mark Frost, Assistant Director Transport,
Parking & Environmental Strategy
Customer Relations, Environment & Culture Directorate,
The Civic Centre, Lampton Road
Hounslow, TW3 4DN



Drawing Status						
Drawn	Approved	Date	Scale	Size		
Inder	IS	March 2020	N.T.S	A4		
Dwg No				Rev		
Rev	Date	Description				



© Crown copyright. All rights reserved
 London Borough of Hounslow 100019263 2020

		Drawing Status				8 Windsor Road, Hounslow, TW4 7QQ		<small>Mark Frost, Assistant Director Transport, Parking & Environmental Strategy Customer Relations, Environment & Culture Directorate, The Civic Centre, Lampton Road Hounslow, TW3 4DN</small>	
Drawn	Approved	Date	Scale	Size					
Inder	IS	March 2020	N.T.S	A4	Proposed disabled parking spaces		Client  		
Rev	Date	Description		Rev					



**London Borough
of Hounslow**

STATEMENT OF REASONS

Experimental disabled parking bays & disabled permit parking bays

The Council is proposing to implement disabled parking bays and disabled permit parking bays by experimental order to assist holders of the blue badge to park nearer to their place of residence.

The experimental order will run for a period of 18 months during what is effectively a consultation period open for comments and representations from those affected by the proposals. Within this time, a review will be carried out to gauge the effectiveness of the bays and to make the proposal permanent.

London Borough of Hounslow Traffic Management Order

2008 No.9

The London Borough of Hounslow (Free Parking Places) (Disabled Persons) (No.1) Order 2008

Made on 31 March 2008

Coming into operation for all purposes of Article 16 on 6 April 2008

Coming into operation on 7 April 2008

ARRANGEMENT OF ARTICLES

PART I PRELIMINARY

	Article
Citation and commencement	1
Interpretation	2

PART II DESIGNATION OF PARKING PLACES

Designation of parking places	3
Vehicles for which parking places are designated	4

PART III SUPPLEMENTARY PROVISIONS

Contravention in parking places	5
Manner of payment of penalty charge	6
Alteration of position of a vehicle in a parking place	7
Removal of a vehicle from a parking place	8
Movement of a vehicle in a parking place in an emergency	9

Restriction on removal of penalty charge notices	10
Manner of standing in a parking place	11
Power to suspend the use of a parking place	12
Restriction on the use of a parking place	13
Restriction on waiting by a vehicle in a parking place	14
Manner of standing at a parking place	15
Placing of traffic signs	16
Schedule - Each area on a street designated as a parking place	

The Council of the London Borough of Hounslow, having consulted the Commissioner of Police of the Metropolis, in exercise of the powers conferred by section 6 of the Road Traffic Regulation Act 1984 (a) as amended by section 8 of and Schedule 5 to the Local Government Act 1985 (b) and of all other enabling powers hereby make the following Order:-

Part I

PRELIMINARY

Citation and Commencement

1. This Order may be cited as the London Borough of Hounslow (Free Parking Places) (Disabled Persons) (No.1) Order 2008 and shall come into operation for all purposes of Article 16 on 6 April 2008 and for all other purposes on 7 April 2008.

Interpretation

- 2.(1) In this Order, except where the context otherwise requires, the following expressions have the meanings hereby respectively assigned to them:

“Civil Enforcement Officer” means a person authorised by or on behalf of the Council to supervise any parking place;

"Council" means the Council of the London Borough of Hounslow;

“disabled person” and “disabled person’s badge” have the same meanings as in the Disabled Person (Badges for Motor Vehicles) (England) Regulations 2000 (c)

“disabled person’s vehicle” has the same meaning as in the Local Authorities’ Traffic Orders (Exemptions for Disabled Persons) (England and Wales) Regulations 2000 (d);

(a) 1984 c.27 (b) 1985 c.51 (c) SI2000/682 (d) SI2000/683

"driver" in relation to a vehicle waiting in a parking place means the person driving the vehicle at the time it was left in the parking place;

"enactment" means any enactment, whether public, general or local, and includes any order, byelaw, rule, regulation, scheme or other instrument having effect by virtue of an enactment and any reference in this Order to any enactment shall be construed as a reference to that enactment as amended, applied, consolidated, re-enacted by or as having effect by virtue of any subsequent enactment;

"goods" means any goods of any kind whether animate or inanimate and includes postal packets of any description, and "delivering" and "collecting" in relation to any goods includes checking the goods for the purpose of their delivery or collection;

"goods carrying vehicle" means a motor vehicle constructed or adapted for use for the carriage of goods or burden of any description and not drawing a trailer;

"parking place" means any area on a street designated as a parking place in the Schedule to this Order;

"passenger vehicle" means a vehicle constructed or adapted for the carriage of passengers and their effects;

"penalty charge and reduced penalty charge" means a charge set by the Council under the provisions of Part 6 of the Traffic Management Act 2004 (a) and with the approval of the Secretary of State for Transport which is to be paid to the Council within 28 days beginning on the date of the Notice, or 14 days in the case of a reduced penalty charge, following the issue of the penalty charge notice;

"penalty charge notice" means a notice issued or served by a parking attendant pursuant to the provisions of Regulation 8(1) of the Civil Enforcement of Parking (Contraventions) (England) General Regulations 2007 (b)

"permitted hours", in relation to a parking place, means the period specified at the beginning of Schedule 1 and Schedule 2;

"Schedule" means a Schedule to this Order;

"Street" includes part of a street;

"telecommunications system" has the same meaning as in the Telecommunications Act 1984 (c);

- (2) Any reference in this Order to a numbered Article or Schedule shall, unless the context otherwise requires, be construed as a reference to the Article or Schedule bearing that number of this Order;
- (3) Any reference in this Order to a numbered Article shall, unless the context otherwise requires, be construed as a reference to the Article bearing that number in this Order.

- (4) for the purposes of this Order, a vehicle shall be regarded as displaying a disabled persons' badge in the relevant position when it is so regarded for the purposes of Regulation 4 of the Local Authorities' Traffic Orders (Exemptions for Disabled Persons) (England and Wales) Regulations 2000.

Revocation of existing Orders.

Without prejudice to the validity of anything done or to any liability incurred in respect of any act or omission before the coming into operation of this Order the Hounslow (Free Parking Places Order) (Disabled Persons) (No.1) Order 1980 (a) and all of its subsequent amendments are hereby revoked.

PART II

DESIGNATION OF PARKING PLACES

Designation of parking places

3. Each area on a street comprising of the length of carriageway of a street specified in column 2 of Schedules 1 and 2 to this Order and, unless otherwise so specified, bounded on one side of that length by the edge of the carriageway and having a minimum width throughout of 1.80 metres is designated as a parking place.

Vehicles for which parking places are designated.

4. Each parking place described in the Schedule to this Order may be used, subject to the provisions of this Order, for the leaving during the permitted hours of such disabled persons' vehicles as display in the relevant position a disabled person's badge.

PART III

SUPPLEMENTARY PROVISIONS

Contravention in parking places

5. (1) If a vehicle that is not a disabled persons' vehicle is left in a parking space during the permitted hours, or in contravention of any other provision of this Order, a penalty charge shall be payable.
- (2) In the case of a vehicle in respect of which a penalty charge is payable, a penalty charge notice showing the information as required by Regulations 8 and 9 and the Schedule to The Civil Enforcement of Parking Contraventions (England) General Regulations 2007 may then be issued by a Civil Enforcement Officer in uniform in accordance with the requirements of Section 76 of the Traffic Management Act 2004.

(a) GLC 1980/66 including all amendments up to and including LBH2007/52

Manner of payment of penalty charge

6. The penalty charge shall be paid to the Council either by cash or cheque or postal order or other accepted means which shall be delivered or sent to the Council at any address indicated on the penalty charge notice and in accordance with the instructions on that notice not later than twenty-eight days from the date of the penalty charge notice, or in the case of a reduced penalty charge, fourteen days from the date of the penalty charge notice.

Alteration of position of a vehicle in a parking place

7. Where any vehicle is standing in a parking place in contravention of the provisions of Article 11 of this Order, a Civil Enforcement Officer may alter or cause to be altered the position of the vehicle in order that its position shall comply with those provisions.

Removal of a vehicle from a parking place

8. Where a Civil Enforcement Officer is of the opinion that any of the provisions contained in Article 14(2) of this Order have been contravened or not complied with in respect of a vehicle left in a parking place he may remove or cause to be removed the vehicle from the parking place and, where it is so removed, shall provide for the safe custody of the vehicle:

Provided that nothing in this Article shall apply to a disabled person's vehicle displaying a disabled persons "blue" badge.

Movement of a vehicle in a parking place in an emergency

9. A police constable in uniform or a Civil Enforcement Officer may remove or cause to be removed, in case of emergency, to any place they think fit, any vehicle left in a parking place.

Restriction on removal of penalty charge notices

10. Where a penalty charge notice has been attached to a vehicle in accordance with the provisions of Article 5(2) of this Order, no person, not being the owner or driver of the vehicle, shall remove the notice from the vehicle unless authorised to do so by the owner or driver:

Provided that nothing shall apply to a Civil Enforcement Officer or a police constable in uniform or a person removing the vehicle in pursuance of an arrangement made by a police constable or the Council by or under regulations made in pursuance to powers contained in sections 99, 100, 101 and 102 of the Road Traffic Regulation Act 1984.

Manner of standing in a parking place

11. Every vehicle left in a parking place in accordance with the foregoing provisions of this Order shall so stand:

- (a) if the parking place is not in a one-way street, that the left or near side of the vehicle is adjacent to the left-hand edge of the kerb;

- (b) if the parking place is in a one-way street, that the left or near side of the vehicle is adjacent to the left-hand edge of the carriageway or that the right or off-side of the vehicle is adjacent to the right-hand edge of the carriageway; and
- (c) that the distance between the edge of the carriageway and the nearest wheel is not more than 50 centimetres;
- (d) that every part of the vehicle is within the limits of the parking place.

Power to suspend the use of a parking place

- 12.. (1) Any person duly authorised by the Council may suspend the use of a parking place or any part thereof whenever he considers such suspension reasonably necessary:
- (a) for the purpose of facilitating the movement of traffic or promoting its safety;
 - (b) for the purpose of any building operation, demolition or excavation adjacent to the parking place, the maintenance, improvement or reconstruction of the highway or the cleansing of gullies in or adjacent to the parking place, the laying, erection, alteration or repair in or adjacent to the parking place of any sewer or of any main, pipe or apparatus for the supply of gas, water or electricity or any telecommunication system or the placing, maintenance or removal of any traffic sign;
 - (c) for the convenience of occupiers of premises adjacent to the parking place on any occasion of the removal of furniture to or from one office or dwelling house adjacent to the parking place from or to a depository, another office or dwelling house;
 - (d) on any occasion on which it is likely by reason some special attraction that any street will be thronged or obstructed;
 - (e) for the convenience of occupiers of premises adjacent to the parking place at times of weddings or funerals, or on other special occasions.
- (2) Any person suspending the use of a parking place or any part thereof, in accordance with the provisions of this Article, or any person authorising or causing such suspension, shall place or cause to be placed in or adjacent to that parking place, traffic signs indicating that the waiting of vehicles is prohibited.
- (3) No person shall cause or permit a vehicle to wait in a parking place during such period as there is in or adjacent to that parking place a traffic sign placed in pursuance of paragraph (2) of this Article:

Provided that nothing in this paragraph shall apply –

- (i) in respect of any vehicle being used for Fire Brigade, Ambulance or Police purposes or any vehicle which is waiting for any reason specified in paragraphs (1)(b) or (1)(c) of Article 14 of this Order; or

- (ii) to anything done with the permission of the person suspending the use of the parking place or part thereof in pursuance of paragraph (1) of this Article.

Restriction on the use of a parking place

13. During the permitted hours no person shall use any parking place or any vehicle while it is in a parking place in connection with the sale or offering or exposing for sale of any goods to any person in or near the parking place or in connection with the selling or offering for sale of his skill in handicraft or his services in any other capacity;

Provided that nothing in this Article shall prevent the sale or offering or exposing for sale of goods from a vehicle if the vehicle is one to which the provisions of Article 14(1)(h) apply.

Restriction on waiting by a vehicle in a parking place

14. (1) Notwithstanding the foregoing provisions of this Order any vehicle may wait during the permitted hours in any part of a parking place if the use of that part has not been suspended and if:

- (a) the vehicle is waiting for a period not exceeding two minutes or such longer period as a police constable or a parking attendant in uniform may approve to enable a person to board or alight from the vehicle or load thereon or unload therefrom their personal luggage;

Provided that if the said person is a person suffering from any disability or injury which seriously impairs their ability to walk, or who is blind the vehicle may wait for so long as may be necessary to enable that person to board or alight from the vehicle or load thereon or unload therefrom their personal luggage;

- (b) the vehicle is waiting owing to the driver being prevented from proceeding by circumstances beyond his control or to such waiting being necessary in order to avoid an accident;
- (c) the vehicle is being used for fire brigade, ambulance or police purposes or, not being a passenger vehicle, is being used in the service of a local authority in pursuance of statutory powers or duties provided that in all the circumstances it is reasonably necessary in the exercise of such powers or in the performance of such duties for the vehicle to wait in the place in which it is waiting;
- (d) the vehicle is waiting only so long as may be necessary to enable it to be used in connection with the removal of any obstruction to traffic;
- (e) the vehicle is waiting –
 - (i) while postal packets addressed to premises adjacent to the parking place in which the vehicle is waiting are being unloaded from the vehicle or, having been unloaded therefrom, are being delivered; or

- (ii) while postal packets are being collected for loading on the vehicle from premises or posting boxes adjacent to the parking place in which the vehicle is waiting or, having been so collected, are being loaded thereon;
 - (f) the vehicle not being a passenger vehicle is waiting only for so long as may be necessary to enable it to be used for any purpose specified in Article 12(1)(b);
 - (g) the vehicle is in actual use in connection with the removal of furniture to or from one office or dwelling house adjacent to the parking place from or to a depository or another office or dwelling house; or
 - (h) in any other case the vehicle is waiting for the purpose of delivering or collecting goods or loading or unloading the vehicle at premises adjacent to the parking place in which the vehicle is waiting and the vehicle does not wait for such purpose for more than twenty minutes or such longer period as a police constable or parking attendant in uniform may approve.
- (2) Except as provided by this Order, the driver or person in charge of a vehicle shall not cause or permit a vehicle to wait in a parking place during the permitted hours.
 - (3) Nothing in the foregoing provisions of this Order shall be taken as authorising anything which would be a contravention of any Regulations made or having effect as if made under Section 25 of the Road Traffic Regulation Act 1984.

Manner of waiting in a parking place

15. No person shall cause or permit a vehicle to wait in a parking place by virtue of the provisions of paragraphs 1(e), (f), (g) or (h) of the last preceding Article otherwise than so that:
- (a) the longitudinal axis of the vehicle is parallel to the edge of the carriageway nearest to the vehicle; and
 - (b) the distance between the said edge and the nearest wheel of the vehicle is not more than 300 millimetres; and
 - (c) no part of the vehicle obstructs any vehicular means of ingress to or egress from any premises adjacent to the side of the road on which the vehicle is waiting.

For the purposes of the last fore-going sub-paragraph, the expression “premises” shall not include any premises to or from which any furniture is being removed by virtue of the provisions of paragraph (1)(g) of the last preceding Article or to or from which goods are being delivered or collected by virtue of the provisions of paragraph (1) (h) of that Article.

Placing of traffic signs, etc.

16. The Council shall:
- (a) place and maintain traffic signs indicating the limits of each parking place and of each parking space; and

- (b) place and maintain in or in the vicinity of each parking place traffic signs indicating that such parking place may be used during the permitted hours for the leaving only of vehicles specified in Article 4 to this Order;
- (c) carry out such other work as is reasonably necessary for the purposes of the satisfactory operation of a parking place.

Dated this thirty-first day of March 2008.



 Director of Street Management and Public Protection
 (The Officer appointed for this purpose)

SCHEDULE 1 (see Article 3)

In relation to a parking place referred to in this Schedule, the expression "permitted hours" means the period between 8.00am and 4.30pm on Mondays to Friday.

Parking places in respect of which the maximum period for which a disabled persons vehicle may be left during the permitted hours is 30 minutes.

EACH AREA ON A STREET DESIGNATED AS A PARKING PLACE

No.of parking place	Designated parking place
1.	2.
1.	Cromwell Road, Hounslow the north-east side, between a point opposite the north-western wall of No.55 Cromwell Road south-eastwards for a distance of 8.00 metres.

SCHEDULE 2 (see Article 3)

In relation to a parking place referred to in this Schedule, the expression "permitted hours" means the period "at any time" throughout the week.

EACH AREA ON A STREET DESIGNATED AS A PARKING PLACE

No. of parking place	Designated parking place
1.	2.
1	AIREDALE AVENUE, W4, the north-east side, from a point 40 metres north of a point opposite the northern flank wall of No.1 Airedale Avenue northwards for a distance of 6.00 metres.
2	ALBERT ROAD, HOUNSLOW, the north-west side, from a point 3 metres south-west of the party wall of Nos.33 and 35 Albert Road to a point 3 metres north-east of the party wall of Nos.33 and 35 Albert Road, Hounslow.
3	ALBERT ROAD, HOUNSLOW, the north-west side, from a point opposite the south-western flank wall of No.17 Albert Road south-westwards for a distance of 6.00 metres.
4	ALBERT ROAD, HOUNSLOW, the north-west side, from a point 500 millimetres south-west of the party wall between Nos.11 and 15 Albert Road south-westwards for a distance of 6.00 metres.
5	ALBERT ROAD, HOUNSLOW, the south-east side, from a point opposite the south-western flank wall of No.36 Albert Road north-eastwards for a distance of 6.00 metres.
6	ALGAR ROAD, ISLEWORTH, the east side, from a point 0.5 metres south of the party wall of Nos.28 and 30 northwards for a distance 6.00 metres.
7	ALGAR ROAD, ISLEWORTH, the west side, from a point 1.25 metres south of the party wall of Nos.41 and 43 northwards for a distance 6.00 metres.
8	AVENUE ROAD, BRENTFORD, the north-west side, from a point 500 millimetres south-west of the party wall of Nos. 21 and 19 Avenue Road north-eastwards for a distance of 6.00 metres.

- 9 AVENUE ROAD, BRENTFORD, the south-east side, from a point 1.00 metre south-west of the party wall of Nos.34 and 35 Avenue Road, Brentford north-eastwards for a distance of 5.00 metres.
- 10 AVENUE ROAD, BRENTFORD, the south-east side, from a point opposite the party wall of Nos.32 and 33 Avenue Road, Brentford south-westwards for a distance of 6.00 metres.
- 11 AVENUE ROAD, BRENTFORD, the south-east side, from a point opposite the party wall of Nos.32 and 33 Avenue Road, Brentford south-westwards for a distance of 6.00 metres.
- 12 BALFERN GROVE, CHISWICK, the south-east side from a point opposite the north-west flank wall of No.2 Balfern Grove south-westwards for a distance of 6.00 metres.
- 13 BOSTON MANOR ROAD, ISLEWORTH, the north-west side, from a point 2.00 metres north-west of a point opposite the party wall of Nos.38 and 40 Boston Manor Road north-westwards for a distance of 5.00 metres.
- 14 BRAEMAR ROAD, BRENTFORD, the north-west side, from a point 0.75 metres south-west of the party wall of Nos.53 and 54 Braemar Road, north-eastwards for a distance of 6.00 metres.
- 15 BRITISH GROVE (SOUTH), CHISWICK, the south-east side, between a point opposite the south-westermost wall of No.35 British Grove north-eastwards for a distance of 6 metres.
- 16 BRITISH GROVE, W4 the south-east side, from a point opposite a point 12.5 metres north of the southern flank wall of Nos.30 to 36 Middlesex Court, British Grove northwards for a distance of 6.00 metres.
- 17 BURFORD ROAD, the north-west side of the lay-by fronting No's 41 to 45 Burford Road, from a point opposite the party wall of Nos.41 and 43 Burford Road north-eastward for a distance of 6.00 metres.
- 18 BURFORD ROAD, the south-east side, from a point opposite the south-western flank wall of 48 Burford Road north-eastward for a distance of 6.00 metres.
- 19 BURNABY GARDENS, CHISWICK, the south-west side, from a point opposite the party wall of Nos.43 and 45 Burnaby Gardens south-eastwards for a distance of 6.00 metres.

- 20 BURNABY GARDENS, CHISWICK, the west side, from a point opposite the party wall of Nos.5 and 7 Burnaby Gardens southwards for a distance of 6.00 metres.
- 21 CENTRAL AVENUE, HOUNSLOW, the south-west side, from a point opposite the party wall of Nos.41 and 43 Central Avenue south-eastwards for a distance of 6.00 metres.
- 22 CHANNEL CLOSE, HESTON, the area of carriageway fronting No's 19 and 21 Channel Close, the east side, from the northern kerb-line of Channel Close southwards for a distance of 8.0 metres and with a width throughout of 2.2 metres.
- 23 CHAPEL ROAD, HOUNSLOW, the north-east side, from a point opposite the south eastern wall of No.5 Chapel Road north-westward for a distance of 6.00 metres.
- 24 CHISWICK HIGH ROAD, CHISWICK, the service road that lies on the south-east side of Chiswick High Road between Devonshire Road and Linden Gardens, the south-east side, in the lay-by fronting Nos.193 to 199 Chiswick High Road - 3 No. Spaces.
- 25 CHISWICK ROAD, CHISWICK, the north-west side, from a point 0.75m south-west of the party wall of Nos.6 and 7 Chiswick Road north-eastwards for a distance of 6.00 metres.
- 26 CHISWICK ROAD, CHISWICK, the south-east side, from a point opposite the south-western side of the entrance gate to Nos.25 to 48 Dewsbury Court, Chiswick Road north-eastwards for a distance of 5.00 metres.
- 27 CLARE ROAD, HOUNSLOW, the north-east side, from a point opposite the party wall of Nos.13 and 15 Clare Road South-eastward for a distance of 5.50 metres.
- 28 CLARENCE ROAD, CHISWICK, the south-west side, from a point opposite the boundary wall between Nos.6a and 8 Clarence Road north-westwards for a distance of 6.00 metres.
- 29 CLIFDEN ROAD, BRENTFORD, the north-west side, from a point 500 millimetres north-east of the party wall between Nos.29 and 31 Clifden Road south-eastwards for a distance of 6.00 metres.
- 30 CLIFDEN ROAD, BRENTFORD, the north-west side, from a point opposite the party wall of Nos.39 and 41 Clifden Road north-eastwards for a distance of 6.00 metres.

- 31 CLITHEROW ROAD, BRENTFORD, the south-west side, from a point opposite the party wall of Nos.34 and 36 Clitherow Road, south-eastwards for a distance of 6.00 metres.
- 32 COLE GARDENS, CRANFORD, in the lay-by on the north-west side of Cole Gardens, from a point 3.50 metres north-east of the south-western flank wall of Nos.2 to 18 Cole Gardens, north-eastwards for a distance of 6.00 metres.
- 33 COMPTON CRESCENT, CHISWICK, the north-east side, from a point opposite the party wall of Nos.25 and 27 Compton Crescent south-westwards for a distance of 6.00 metres.
- 34 COMPTON CRESCENT, CHISWICK, the south-east side, from a point opposite the party wall of Nos.21 and 23 Compton Crescent north-eastwards for a distance of 6.00 metres.
- 35 CONCORDE CLOSE, HOUNSLOW, north-side, from a point opposite the party wall of Nos.17 and 18 Concorde Close westwards for a distance of 6.00 metres.
- 36 CONVENT WAY, SOUTHALL, the west side, from a point opposite the southern wall of flats block Nos.354 to 369 Convent Way northwards for a distance of 6.00 metres.
- 37 CRANBROOK ROAD, CHISWICK, (north-west to south east arm) south-west side from a point opposite the party wall of Nos.32 and 34 Cranbrook Road south-east for a distance of 6.00 metres.
- 38 CRANBROOK ROAD, CHISWICK, north-east side, from a point opposite the party wall of Nos.5 and 7 Cranbrook Road south-westwards for a distance of 6.00 metres.
- 39 CROMWELL ROAD, FELTHAM, the north-west side, from a point opposite the party wall of Nos.3 and 5 Cromwell Road north-eastwards for a distance of 6.00 metres.
- 40 CROMWELL ROAD, FELTHAM, the south-east side, from a point opposite the party wall of Nos.22 and 24 Cromwell Road south-westwards for a distance of 6.00 metres.
- 41 CROSS LANCES ROAD, HOUNSLOW, the north-east side, from a point 1.00 metre north-west of the party wall of Nos.4 and 6 Cross Lances Road north-westwards for a distance of 5.50 metres.

- 42 *revoked* DALE STREET, CHISWICK, the north-east side, from a point opposite the party wall of Nos.46 and 48 Dale Street south-eastwards for a distance of 6.00 metres.
- 43 DEVONSHIRE ROAD, CHISWICK, the south-west side, between a point 3 metres north-west of the party wall of Nos.85 and 87 Devonshire Road and a point 3.00 metres south-east of that party wall.
- 44 DEVONSHIRE ROAD, CHISWICK, the north-east side, from a point opposite the north-eastern wall of No 21 Devonshire Road, Chiswick south-westwards for a distance of 6.00 metres.
- 45 DEVONSHIRE ROAD, CHISWICK, the north-east side, from a point opposite the party wall of Nos.170 and 172 Devonshire Road south-eastwards for a distance of 5.00 metres.
- 46 DEVONSHIRE ROAD, CHISWICK, the south-west side, from a point 1.50 metres north-west of a point opposite the southern-eastern flank wall of Garrick House, Devonshire Road north-westwards for a distance of 5.00 metres.
- 47 DUKE ROAD, CHISWICK, the east side, from a point opposite the party wall of Nos.25 and 27 Duke Road northwards for a distance of 5.50 metres.
- 48 DUKE ROAD, CHISWICK, the south-west side, from a point opposite the party wall of Nos.1 and 2 Duke Road south-eastwards for a distance of 6.00 metres.
- 49 EALING ROAD, BRENTFORD, the north-east side, in the service road fronting of Nos.48 to 62 Ealing Road, from a point opposite the party wall of Nos.48 and 50 Ealing Road south-eastwards for a distance of 6.00 metres.
- 50 EALING ROAD, BRENTFORD, the south-west side, from a point opposite the party wall of Nos.199 and 201 Ealing Road north-westwards for a distance of 6.00 metres.
- 51 EASTBURY GROVE, CHISWICK, the north-east side, from a point opposite the party wall of Nos.36 and 38 Eastbury Grove south-eastwards for a distance of 5.00 metres.
- 52 EDE CLOSE, HOUNSLOW, in the lay-by on the north-west side, from a point 3.00 metres north-east of the north eastern wall of Nos.1 to 44 Boswood Court, Ede Close south-westwards for a distance of 9.00 metres.

- 53 ELLIOTT ROAD, CHISWICK, the east-side, from a point 0.25m south of the party wall of Nos.41 and 43 Elliott Road northwards for a distance of 5.50 metres.
- 54 ELLIOTT ROAD, CHISWICK, the west side, from a point opposite the party wall of Nos.28 and 30 Elliott Road southwards for a distance of 6.00 metres.
- 55 ELMWOOD ROAD, CHISWICK, the south-west side, from a point 750 millimetres south-east of a point opposite the party wall of Nos.31 and 33 Elmwood Road south-eastwards for a distance of 6.00 metres.
- 56 FERRERO CLOSE, HESTON, the south-east side, from a point 12.00 metres north-east of the western flank wall of Passingham House, Ferrero close north-eastwards for a distance of 6.00 metres.
- 57 FLANDERS ROAD, CHISWICK, south side, from a point opposite the party wall of Nos.43 to 48 and 49 to 54 Flanders Mansions, Flanders Road westwards for a distance of 6.00 metres.
- 58 FLANDERS ROAD, CHISWICK, the south side, from a point opposite the middle of the entrance to Nos.49 to 54 Flanders Mansions, eastwards for a distance of 5.00 metres and westwards for a distance of 6.00 metres.
- 59 FLANDERS ROAD, the south side, from a point opposite the western most wall of No.18 Flanders Road eastwards for a distance of 6.00 metres.
- 60 GLADSTONE AVENUE, FELTHAM, the north-east side, from a point opposite the party wall of Nos.28 and 30 Gladstone Avenue south-eastwards for a distance of 6.00 metres.
- 61 GLEBE STREET, CHISWICK, the south-east side, from a point 41.90 metres north-east of the north-eastern-kerb-line of Dale Street north-eastwards for a distance of 6.00 metres.
- 62 GLEBELANDS ROAD, FELTHAM, that length of carriageway fronting Nos.17 to 68 Frank Towell Court, the south-west side, perpendicular to the roadside, from a point 10 metres south-east of the north-west wall of Nos. 17 to 68 Frank Towell Court, south-eastwards for a distance of 2.4 metres.
- 63 GLENHURST ROAD, BRENTFORD, the south-east side, from a point 0.75 metres south-west of the party wall of Nos.39 and 41 Glenhurst Road north-eastwards for a distance of 6.00 metres.

- 64 GORDON ROAD, CHISWICK, the south side, from a point opposite the party wall of Nos.23 and 24 Gordon Road westwards for a distance of 6.00 metres.
- 65 GROVE ROAD, BRENTFORD, the north-west side, from a point opposite the wall Nos.1 and 2 Grove Road south-westwards for a distance of 6.00 metres.
- 66 HADLEY GARDENS, CHISWICK W4, the west side, from a point opposite the party wall on Nos.39 and 41 Hadley Gardens southwards for a distance of 6.00 metres.
- 67 HADLEY GARDENS, CHISWICK W4, the north-west side, from a point opposite the party wall on Nos.5 and 7 Hadley Gardens south-westward for a distance of 6.00 metres.
- 68 HAMILTON ROAD, BRENTFORD, the north-west side from a point 0.75 metres south-west of the party wall of Nos.64 and 65 Hamilton Road north-eastwards for a distance of 6.00 metres.
- 69 HAMILTON ROAD, BRENTFORD, the north-west side from a point 500 millimetres south-west of the party wall of Nos.51 and 49 Hamilton Road north-eastwards for a distance of 6.00 metres.
- 70 HEXHAM GARDENS, ISLEWORTH, the south-west side, from a point opposite the property dividing line of Nos.11/9 and 7/5 Hexham Gardens south-eastwards for a distance of 6.00 metres.
- 71 HOLLOWAY STREET, HOUNSLOW, the north-east side, between a point opposite the rear wall of No.160 High Street, Hounslow and a point 23 metres south-east of that wall.
- 72 HOUNSLOW AVENUE, HOUNSLOW, the south-east side, from a point opposite the party wall of Nos.31 and 33 Hounslow Avenue north-eastwards for a distance of 6.00 metres.
- 73 INGRESS STREET, CHISWICK, the south-east side, from a point 2.10 metres north-east of the front wall of No.48 Devonshire Road north-eastwards for a distance of 5.00 metres.
- 74 INWOOD ROAD, the west side, from the common boundary of Nos.69 and 71 Inwood Road, southwards for a distance of 6.00 metres.

*Amended by TMO 2009/04
Date 14/12/07*

- 75 JAMES STREET, HOUNSLOW, south-west side from a point opposite the party wall of Nos.3 and 5 James Street south-eastwards for a distance of 6.00 metres.
- 76 LATEWARD ROAD, BRENTFORD, the north-east to south-west arm, the north-east side, from a point opposite the party wall of Nos.24 and 25 Lateward Road, Brentford south-westwards for a distance of 6.00 metres.
- 77 LAYTON ROAD, BRENTFORD, the north-west side, from a point 0.75 metres south-west of the party wall of Nos.21 and 22 Layton Road, north-eastward for a distance of 6.00 metres.
- 78 LAYTON ROAD, BRENTFORD, the north-west side, from a point opposite the party wall of Nos.24 and 25 Layton Road, Brentford south-westwards for a distance of 6.00 metres.
- 79 LAYTON ROAD, BRENTFORD, the north-west side, from a point opposite the party wall of Nos.31 and 32 Layton Road, Chiswick north-eastwards for a distance of 6.00 metres.
- 80 LINDEN GARDENS, CHISWICK, south-western arm, the south-west side, from a point 20 metres south-east of the south-western kerb line of Chiswick High Road, south-eastwards for a distance of 6.00 metres.
- 81 LINKFIELD ROAD, ISLEWORTH, north-east side from a point opposite the party wall of Nos.72 and 74 Linkfield Road south-eastwards for a distance of 6.00 metres.
- 82 LINKFIELD ROAD, ISLEWORTH, the south-west side, from a point 250 millimetres north-west of a point opposite the party wall of Nos.189 and 191 Linkfield Road south-eastwards for a distance of 5.50 metres.
- 83 LINKFIELD ROAD, ISLEWORTH, the south-west side, from a point 500 millimetres south-east of a point opposite the party wall of Nos.89 and 87 Linkfield Road north-westwards for a distance of 6.00 metres.
- 84 LIONEL ROAD, BRENTFORD, the south-west side, from a point 12 metres north-west of the north-western flank wall of No.214 Lionel Road north-westwards for a distance of 6.00 metres.
- 85 LIONEL ROAD, BRENTFORD, the south-west side, from a point 4 metres south-east of the party wall of Nos.27 and 29 Lionel Road, north-westwards for a distance of 6.00 metres.

- 86 LIONEL ROAD, BRENTFORD, the south-west side, from a point 6.00 metres, north-west of the south-eastern flank wall of No.9 Lionel Road north-westwards of 5.00 metres.
- 87 LIONEL ROAD, BRENTFORD, the south-west side, from a point opposite the south-eastern flank wall of No 9 Lionel Road, north-westwards for a distance of 6.00 metres.
- 88 LONDON ROAD, HOUNSLOW, the north-west side, from a point opposite the party wall Nos.450 and 448 London Road South-westwards for a distance of 6.00 metres.
- 89 LORING ROAD, ISLEWORTH, the north-west side, from a point 0.25m south-west of the party wall of Nos.44 and 46 Loring Road north-eastwards for a distance of 5.50 metres.
- 90 LORING ROAD, ISLEWORTH, the north-west side, from a point opposite party wall of Nos. 20 and 22 Loring Road north-eastwards for a distance of 5.00 metres.
- 91 LORING ROAD, ISLEWORTH, the north-west side, from a point opposite party wall of Nos.32 and 34 Loring Road north-eastwards for a distance of 5.50 metres.
- 92 MARLBOROUGH ROAD, CHISWICK, the south-west side, from a point opposite the party wall of No's 12 and 14 Marlborough Road, Chiswick north-westwards for a distance of 6.00 metres.
- 93 MARLBOROUGH ROAD, ISLEWORTH, the south-east side, from a point opposite the party wall of Nos.1 and 3 Marlborough Road south-westwards for a distance of 5.50 metres.
- 94 MARTINDALE ROAD, HOUNSLOW, the north-east side, from a point opposite the party wall of Nos.166 and 168 Martindale Road south-eastwards for a distance of 5.00 metres.
- 95 MILLBOURNE ROAD, HANWORTH, the north-west side, from a point opposite the party wall of Nos.28 and 30 Millbourne Road north-eastwards for a distance of 6.00 metres.
- 96 MILLBOURNE ROAD, HANWORTH, the south-east side, from a point opposite the party wall of Nos.33 and 35 south-westwards for a distance of 6.00 metres.

- 97 MYRTLE ROAD, HOUNSLOW, the north-west side from a point opposite the party wall of Nos.57 and 59 Myrtle Road north-eastwards for a distance of 6.00 metres.
- 98 NETHERAVON ROAD, W4 the south-west side, from a point 35 metres north of the common boundary Nos.4 and 6 Netheravon Road northwards for a distance of 6.5 metres.
- 99 NEW ROAD, BEDFONT, south-west side, from a point opposite the party wall of Nos.13 and 15 New Road, Bedfont north-westwards for a distance of 6.00 metres.
- 100 NEW ROAD, BEDFONT, the north-west side, from a point 3.00 metres south-east of a point opposite the party wall of Nos.20 and 21 New Road, Bedfont north-westwards for a distance of 6.00 metres.
- 101 NEWGATE CLOSE, FELTHAM, in the south-east corner of the turning head, aligned so that the disabled space bisects the corner and is a length of 6.00 metres.
- 102 NEWTON ROAD, ISLEWORTH, the north-east side, from a point opposite the party wall of Nos.25 and 27 Newton Road, south-eastwards for a distance of 6.00 metres.
- 103 NORTH ROAD, BRENTFORD, the south-west side, from a point 5.50 metres south-east of the south-eastern flank wall of No.7 North Road south-eastwards for a distance of 6.00 metres.
- 104 NORTH STREET, ISLEWORTH, the north-east side, from a point opposite the north-western wall of Nos.8, 10 and 12 Percy Gardens, North Street, north-westward for a distance of 6.00 metres.
- 105 OTTERBURN GARDENS, ISLEWORTH, north-east side, from a point opposite the party wall of Nos.6 and 8 and Nos.10 and 12 Otterburn Gardens, Isleworth north-westwards for a distance of 6.00 metres.
- 106 OXFORD ROAD NORTH, the west side, from a point 7.00 metres north of the northern boundary of Nos.1 to 9 Carfax Court, Oxford Road North northward for a distance of 6.00 metres.
- 107 PARK ROAD, CHISWICK, the north-east side from a point opposite the party wall of Nos.151 and 153 Park Road south-westwards for a distance of 6.00 metres.

- 108 PARK WAY, FELTHAM, the north-east side, between a point opposite the south-eastern flank wall of Nos.21 and 23 Park Way, north-eastward for a distance of 6.00 metres.
- 109 PAXTON ROAD, CHISWICK, north-east side, from a point 1.00 metre north-east of the party wall of Nos.37 and 39 Paxton Road south-eastwards for a distance of 5.00 metres.
- 110 PAXTON ROAD, CHISWICK, north^{EAST}-west side, from a point opposite the south-east flank wall of No. 81 Paxton Road north-westwards for a distance of 6.00 metres.
- 111 PAXTON ROAD, CHISWICK, the north-east side, from a point opposite the party wall of Nos.41 and 43 Paxton Road, Chiswick south-eastwards for a distance of 4.50 metres.
- 112 PLEYDELL AVENUE, W4 the north-east side, from a from a point opposite the common boundary Nos.24 and 26 Pleydell Avenue north-westwards for a distance of 6.00 metres.
- 113 POWNALL ROAD, HOUNSLOW, the south-west side, from a point opposite the party wall of Nos.19 and 21 Pownall Road, westwards for a distance of 6.00 metres.
- 114 PRINCE OF WALES TERRACE, CHISWICK, south-east side, between its junction with Glebe Close, Chiswick and a point 6.00 metres north-east of that point.
- 115 PRIORY AVENUE, CHISWICK, south-east side from a point opposite the party wall of Nos.26 and 28 Priory Avenue south-westwards for a distance of 6.00 metres.
- 116 QUICK ROAD, CHISWICK, the north-west side, from a point 3.30 metres north-east of the front wall of No.101 Duke Road north-eastwards for a distance of 5.00 metres.
- 117 RECKETT ROAD, CHISWICK W4, the south-east side, from a point opposite the party wall of Nos.4 and 6 Reckett Road, South-westward for a distance of 6.00 metres.
- 118 REDLEES CLOSE, ISLEWORTH, the south-east side, parking place to be at 90 degrees to the kerb, from a point opposite the south-western wall of No.18 Redlees Close south-westwards for a distance of 2.40 metres and north westwards for a distance of 4.80 metres.

- 119 ROLLITT CRESCENT, HOUNSLOW, the south-west side, on the footway, from a point opposite the party wall of Nos.6 and 8 Rollitt Crescent north-westwards for a distance of 5.50 metres.
- 120 ROLLITT CRESCENT, HOUNSLOW, the south-west side, on the north-east side of the footway from a point 0.75 metres south-east of the north-west flank wall of No. 8 Rollitt Crescent north-westwards for a distance of 5.00 metres.
- 121 ROMAN ROAD, CHISWICK, the south-west side, from a point opposite the common boundary between Nos.2 and 2a Roman Road south-eastwards for a distance of 6.00 metres.
- 122 ROSSINDEL ROAD, HOUNSLOW, the north-west side, from a point opposite the party wall of Nos.30 and 32 Rossindel Road north-eastwards for a distance of 6.00 metres.
- 123 ROSSINDEL ROAD, HOUNSLOW, the south-east side, from a point opposite the party wall of Nos.31 and 33 Rossindale Road south-westwards for a distance of 6.00 metres.
- 124 SANDRINGHAM GARDENS, CRANFORD, the south-west side, from a point opposite the flank wall of Nos.1 and 2 Sandringham Gardens, south-eastwards for a distance of 6.00 metres.
- 125 SHORT ROAD, CHISWICK, the north-west side, from a point 0.5 metres south-west of the party wall of Nos.17 and 19 Short Road, north-westwards for a distance of 6.00 metres.
- 126 SILVER CRESCENT, CHISWICK, the north-east side, from a point 0.50 metres north-west of the party wall of Nos.72 and 74 Silver Crescent, south-eastwards for a distance of 6.00 metres.
- 127 SILVER CRESCENT, CHISWICK, the north-east side, from a point opposite the party wall of Nos.66 and 64 Silver Crescent, Chiswick south-eastwards for a distance of 6.00 metres.
- 128 SOUTH SIDE, W4 the south-east side, from a point opposite the boundary wall Nos.12 and 13 South Side north-eastwards for a distance of 6.00 metres.
- 129 SPRING GROVE ROAD, HOUNSLOW, the south-east side, from a point opposite the party wall of Nos.59 and 61 Spring Grove Road south-westwards for a distance of 6.00 metres.

- 130 ST GEORGES ROAD, HANWORTH, north-west side from a point opposite the party wall of Nos.25 and 27 St. Georges Road north-eastwards for a distance of 6.00 metres.
- 131 ST GEORGES ROAD, ISLEWORTH, the south-east side, from a point opposite the south-west flank wall of No 18 St Georges Road north-eastwards for a distance of 6.00 metres.
- 132 ST MARY'S GROVE, CHISWICK, the north-east side, from a point opposite the common boundary of Nos.62 and 64 St Mary's Grove north-westwards for a distance of 6.00 metres.
- 133 ST STEPHEN'S ROAD, HOUNSLOW, the south-east side, from a 1.6 metres north-east of the party wall of Nos, 124 and 126 St Stephen's Road north-eastwards for a distance of 5.00 metres.
- 134 ST THOMAS' ROAD, W4, the south-west side, from a point 4.8 metres south-east of the party wall of Nos.24 and 26 St Thomas' Road, W4 south-eastwards for a distance of 6.00 metres.
- 135 STAINES ROAD, BEDFONT, in the lay-by on the north-west side that lies opposite No.357 Staines Road, Bedfont, the south-west side, between the north-western-kerb-line of the lay-by south-eastwards for a distance of 5.00 metres and with a width throughout of 2.5 metres.
- 136 SUNNYCROFT ROAD, HOUNSLOW, the south-west side, from a point opposite the party wall of Nos.1 and 3 Sunnycroft Road, south-eastward for a distance of 6.00 metres.
- 137 SUTTON CLOSE, CHISWICK, the south-west side, from a point 10.0 metres northwest of the south-east flank wall of Nos.1 to 8 Sutton Close north-eastwards, perpendicular to the north-east face of Nos.1 to 8 Sutton Close for a distance of 4.80 metres.
- 138 SUTTON LANE SOUTH, CHISWICK, the north-east side, from a point opposite the party wall of Nos.65 and 67 Sutton Lane South south-eastwards for a distance of 6.00 metres.
- 139 SUTTON LANE, CHISWICK W4, the north-west side, from a point opposite the party wall of Nos.14 to 20 Sutton Lane, north-eastward for a distance of 6.00 metres.
- 140 SWYNCOMBE AVENUE, BRENTFORD, the north-west side, from a point opposite the party wall of Nos.12 and 10 Swyncombe Avenue south-westwards for a distance of 6.00 metres.

- 141 SYON LANE, ISLEWORTH, the south-west side, from a point 2.80 metres south-east of a point opposite the party wall of Nos.14 and 16 Northumberland Gardens, Syon Lane south-eastwards for a distance of 5.00 metres.
- 142 TENNYSON ROAD, HOUNSLOW, the north-west side, from a point 1.0 metre north-east of the south-west flank wall of No. 2 Tennyson Road north-eastwards for a distance of 5.50 metres. The northwest part of the space will be 1.0 metre into the footway, the remaining 0.83 metres will be on the carriageway.
- 143 THE BUTTS, BRENTFORD, the north-western arm, the north-west side, from a point 2.00 metres south-west of a point opposite the north-eastern wall of No. 5 The Butts south-westward for a distance of 3.60 metres and extending 4.80 metres south-eastward from the north-western kerb-line of the north-western arm of The Butts.
- 144 THE BUTTS, BRENTFORD, the south-western arm, the north-east side, from a point 7.50 metres south-east of the south-eastern kerb-line of the north-western arm of The Butts south-eastward for a distance of 2.90 metres and extending 4.80 metres south-westward from the north-eastern kerb-line of the south-western arm of The Butts.
- 145 THE BUTTS, BRENTFORD, the south-western arm, the south-west side, from a point 1.20 metres south-east of the south-eastern kerb-line of the spur fronting Nos.40 to 44 The Butts south-eastward for a distance of 6.00 metres and having a width of 1.83 metres.
- 146 TIVERTON ROAD, HOUNSLOW, the north-east side, from a point opposite the south-eastern wall of No.45 Tiverton Road north-westwards for a distance of 6.00 metres.
- 147 TIVERTON ROAD, HOUNSLOW, the south-west side, from a point 2.00 metres north-west of a point opposite the party wall of Nos.60 and 62 Tiverton Road north-westwards for a distance of 5.00 metres.
- 148 TOWN MEADOW, BRENTFORD, the south-east side, from a point opposite the rear wall of No. 4 Pump Alley south-westwards for a distance of 6.00 metres.
- 149 UPHAM PARK ROAD, W4, the south-west side, from a point opposite the party wall Nos.28 and 30B Upham Park Road south-eastwards for a distance of 6.00 metres.
- 150 VICTORIA AVENUE, HOUNSLOW, the south-east side, from a point opposite the party wall of Nos.61 and 63 Victoria Avenue north-eastwards for a distance of 5.50 metres.
- 151 WELLINGTON AVENUE, HOUNSLOW, the north-west side, from a point opposite the party wall of Nos.4 and 6 Wellington Avenue north-eastwards for a distance of 6.00 metres.

- 152 WHITESTILE ROAD, BRENTFORD, the north-west side from a point opposite the party wall of Nos.30 and 32 Whitstile Road north-eastwards for a distance of 6.00 metres.
- 153 WHITESTILE ROAD, BRENTFORD, the north-west side, from a point 0.5 metres south-west of the party wall of Nos.22 and 24 Whitstile Road north-eastwards for a distance of 6.00 metres.
- 154 WHITESTILE ROAD, BRENTFORD, the north-west side, from a point 0.75 metres south-west of the party wall of Nos.66 and 64 Whitstile Road north-eastwards for a distance of 6.00 metres.
- 155 WHITESTILE ROAD, BRENTFORD, the north-west side, from a point 500 millimetres south-west of the party wall of Nos.100 and 102 Whitstile Road north-eastwards for a distance of 6.00 metres.
- 156 WHITESTILE ROAD, BRENTFORD, the north-west side, from a point 500 millimetres south-west of the party wall of Nos.50 and 48 Whitstile Road north-eastwards for a distance of 6.00 metres.
- 157 WHITESTILE ROAD, BRENTFORD, the south-east side, from a point opposite the party wall of Nos.29 and 31 Whitstile Road north-eastwards for a distance of 6.00 metres.
- 158 WIGLEY ROAD, HANWORTH, (north-east arm) north-east side, from a point 2 metres south-east of the south-east flank wall of No. 53 Wigley Road north-westwards for a distance of 6.00 metres.
- 159 WIGLEY ROAD, HANWORTH, (north-west arm) north-west side, from a point 2 metres south-west of the north-east flank wall of No. 31 Wigley Road north-eastwards for a distance of 6.00 metres.
- 160 WIGLEY ROAD, HANWORTH, the north-west arm, the north-west side, from a point 4 metres north-east of the north-eastern flank wall of No.31 Wigley Road, Hanworth eastwards for a distance of 6.00 metres.
- 161 WIGLEY ROAD, HANWORTH, the north-west side, from a point 3 metres north-east of the south-western flank wall of No. 33 Wigley Road, north-eastwards for a distance of 5.00 metres.
- 162 WOODSTOCK ROAD, CHISWICK W4, the south-east side, from a point opposite the party wall of Nos.26 and 28 Woodstock Road north eastwards for a distance of 6.00 metres.

Traffic Management Order

2016 No. 7

The London Borough of Hounslow (Free Permit Parking Places) (Disabled Persons) Order 2016

Made on 21 March 2016

Coming into operation on 29 March 2016

The Council of the London Borough of Hounslow, after consulting the Commissioner of Police of the Metropolis, in exercise of the powers conferred by sections 6, 45, 46, 49 and 124 of the Road Traffic Regulation Act 1984¹ as amended, and of all other powers thereunto enabling hereby make the following Order:

1. This Order may be cited as the London Borough of Hounslow (Free Permit Parking Places) (Disabled Persons) Order 2016 and shall come into operation for all purposes on 29 March 2016.
2. In this Order, except where the context otherwise requires, the following expressions have the meanings hereby respectively assigned to them:

“civil enforcement officer” has the same meaning as in the Traffic Management Act 2004;

"Council" means the Council of the London Borough of Hounslow;

"disabled person" and "disabled person's badge" have the same meanings as in the Disabled Persons (Badges for Motor Vehicles) (England) Regulations 2000²;

"disabled person's vehicle" has the same meaning as in the Local Authorities' Traffic Orders (Exemptions for Disabled Persons) (England and Wales) Regulations 2000³;

“disabled residents parking permit” means the person to whom a disabled residents permit has been issued to remove the need for a resident to display their ‘blue badge’ when using the disabled person’s parking bay adjacent to their residence;

"driver" in relation to a vehicle waiting in a parking place means the person driving the vehicle at the time it was left in the parking place;

"enactment" means any enactment, whether public, general or local, and includes any order, byelaw, rule, regulation, scheme or other instrument having effect by virtue of an enactment;

¹ 1984 c.27

² SI.2000/882

³ SI.2000/683

"owner", has the same meaning as in the Civil Enforcement of Parking Contraventions (England) General Regulations 2007⁴;

"parking contravention" has the meaning as assigned to it in Part 1 of Schedule 7 of the Traffic Management Act 2004;

"parking place" means any area on a highway designated as such by this Order;

"penalty charge" has the same meaning as in the Civil Enforcement of Parking Contraventions (England) General Regulations 2007

"penalty charge notice" has the same meaning as in the Civil Enforcement of Parking Contraventions (England) General Regulations 2007;

"resident" means a person whose usual place of abode is at the premises the postal address of which is in any street described in Schedule 1;

"Schedule" means a Schedule to this Order;

"user", in relation to a vehicle, means the person by whom such a vehicle is kept and used;

3. Designation of parking places

- (1) The areas of highway as described in column 2 of Schedules 1 is designated as a parking places.
- (2) The limits of each parking place and the limits of each parking space within a parking place shall be indicated on the highway in accordance with the Traffic Signs Regulations and General Directions 2002⁵.

4. Manner of standing in a parking place

- (1) Every vehicle left in a parking place shall stand so that every part of the vehicle is wholly within the limits of any parking space or parking place.

5. Contravention

- (1) If a vehicle is left in a parking place at any time without complying with the provisions of this Order, then a contravention of this Order and a parking contravention within Part 1 of Schedule 7 to the Traffic Management Act 2004, shall deemed to have occurred.
- (2) Where a vehicle is left in a parking place without complying with the provisions of this Order, the vehicle may be removed or caused to be removed from that parking place as provided for by Regulations made under section 99 of the Road Traffic Regulation Act 1984.

6. Period a vehicle may be left after the penalty charge has been incurred

- (1) The period for which a vehicle may be left in a parking place during the permitted hours after the penalty charge has been incurred shall not exceed one hour.

⁴ SI.2007/3483

⁵ SI 2002/3113

Dated this twenty-first day of March 2016



Executive Director of Regeneration, Economic Development & Environment
(the officer appointed for the purpose)

SCHEDULE
(areas on street designated for a disabled residents parking permit)

- | 1.
No. of
Parking
Place | 2.
Location of designated parking place |
|----------------------------------|--|
|----------------------------------|--|

1	70 Church Road, Heston TW5 0LD
2	29 Clifden Road, Brentford TW8 0PB
3	3 Gunyah Court, Spencer Road, Chiswick W4 3SZ
4	18 Lonsdale Road, Chiswick W4 1ND
5	146 St Stephens Road, Hounslow TW3 2BW
6	115 Thornbury Road, Isleworth TW7 4ND
7	18 Wolsey Close, Hounslow TW3 2PJ

EXPLANATORY NOTE

(This Note is not part of the Order but is intended to indicate its general purport).
The London Borough of Hounslow (Free Permit Parking Places) (Disabled Persons) Order 2016 makes provision for parking places in the London Borough of Hounslow in which vehicles displaying a disabled residents parking permit may be left