

## **Dukes Meadows (Alexandra Gardens, Riverside Drive, Staveley Gardens, The Promenade) parking restrictions**

### **The London Borough of Hounslow (No.1) Experimental Order 2017**

1. The London Borough of Hounslow hereby gives Notice that on 6 January 2017 it made the above Order under Section 9 of the Road Traffic Regulation Act 1984 as amended.
2. **The general effect of the Order, which comes into effect on 27 January 2017, will be to introduce:**
  - a. **Saturday and Sunday, 8am-8pm, waiting restrictions in Riverside Drive and The Promenade;**
  - b. **Monday to Sunday, 9am-5pm, waiting restrictions in Alexandra Gardens; and**
  - c. **“no waiting at any time” restrictions in Alexandra Gardens, Riverside Drive, Staveley Gardens and The Promenade, revoking in part the existing ‘first Sunday in the month’ waiting and loading restrictions in Riverside Drive, Alexandra Gardens and Staveley Gardens**

**Descriptions for each proposed restriction are detailed in Schedules 1, 2 and 3.**

3. Documents giving detailed information of the Order can be inspected:
  - (a) online at [www.hounslow.gov.uk](http://www.hounslow.gov.uk) by typing in the term “traffic notices” in the search bar; or
  - (b) at the Forms and Documents Counter, Civic Centre, Lampton Road, Hounslow TW3 4DN, between 9am and 4.15pm Mondays to Fridays. Documents will be available for inspection until the end of eighteen months from the date on which this Notice is published.

Further information may be obtained by telephoning the Regeneration, Economic Development & Environment Department on 020 8583 3322.

4. The Order provides that the Executive Director of Regeneration, Economic Development and Environment, or a person authorised by him, may, if it appears to him or that person essential in the interests of the expeditious, convenient and safe movement of traffic or for preserving or improving the amenities of the area through which any road affected by the Order runs, modify or suspend the Order or any provision thereof.
5. If any person wishes to question the validity of the Order or any of its provisions on the grounds that it or they are not within the powers conferred by the 1984 Act, or that any requirement of the Act, or of any instrument made under the Act has not been complied with, that person may, within 6 weeks from the date on which the Order is made, apply for the purpose to the High Court.
6. If the provisions of the Order continue in operation for a period of at least six months, the Council will consider in due course whether the provisions of the experimental Order should be continued in force indefinitely by means of a permanent Order. Any person desiring to object to the making of an Order for the purpose of such indefinite continuation may, within six months of the Order coming into operation, send a statement in writing of the objection and the grounds on which it is made to the Executive Director of Regeneration, Economic Development and Environment at the above address quoting the reference TMO/E001/17.

Dated 6 January 2017

Brendon Walsh  
Executive Director of Regeneration, Economic Development & Environment

**SCHEDULE 1**  
**(No waiting Saturday to Sunday 8am - 8pm restriction)**

**Riverside Drive,  
North-east side**

- (a) from a point 12 metres south-east of the south-eastern kerb line of Alexandra Gardens eastwards for a distance of 160 metres
- (b) from a point 201 metres east of the south-eastern kerb line of Alexandra Gardens eastwards for a distance of 45.5 metres
- (c) from a point 264 metres east of the south-eastern kerb line of Alexandra Gardens eastwards for a distance of 53 metres
- (d) from a point 334.5 metres east of the south-eastern kerb line of Alexandra Gardens eastwards for a distance of 48 metres
- (e) from a point 399 metres east of the south-eastern kerb line of Alexandra Gardens to the eastern kerb line of The Promenade.

**South-west side**

- (a) from a point 12 metres south-east of a point opposite the south-eastern kerb line of Alexandra Gardens to the western kerb line of The Promenade (including so much of the gated access road into King's House Sports Ground lying to the west of those access gates)

**The Promenade,**

- (a) west side, From the southern kerb line of Riverside Drive southwards for a distance of 12 metres
- (b) east side, From the northern kerb line of Riverside Drive southwards for a distance of 130 metres

**SCHEDULE 2**  
**(No waiting Monday to Sunday 9am – 5pm restriction)**

**Alexandra Gardens, Chiswick  
South-east side**

- (a) from a point 19.0 metres north-east of the north-eastern building line of Nos 98-109 Alexandra Gardens to a point 24.5 metres north-east of the north-eastern building line of Nos 98-109 Alexandra Gardens
- (b) from a point 34.5 metres north-east of the north-eastern building line of Nos 98-109 Alexandra Gardens to a point 39.5 metres north-east of the north-eastern building line of Nos 98-109 Alexandra Gardens

**SCHEDULE 3**  
**(No waiting “at any time” restriction)**

**Alexandra Gardens, Chiswick**

**North-west side**

- (a) from the north-eastern kerb-line of Riverside Drive to a point 3.8 metres south-west of the south-western building line of Nos 98-109 Alexandra Gardens
- (b) from a point 3.2 metres south-west of the north-eastern building line of Nos 98-109 Alexandra Gardens to a point 7.3 metres south-west of the south-western building line of Nos 1-11 Alexandra Gardens
- (c) from a point 2.9 metres north-east of the north-eastern building line of Nos 1-11 Alexandra Gardens to the north-eastern extremity of Alexandra Gardens, including the turning head

**South-east side**

- (a) from the north-eastern kerb-line of Riverside Drive to a point 19.0 metres north-east of the north-eastern building line of Nos 98-109 Alexandra Gardens
- (b) from a point 24.5 metres north-east of the north-eastern building line of Nos 98-109 Alexandra Gardens to a point 34.5 metres north-east of the north-eastern building line of Nos 98-109 Alexandra Gardens
- (c) from a point 39.5 metres north-east of the north-eastern building line of Nos 98-109 Alexandra Gardens to a point 17.4 metres south-west of the south-western building line of Nos 1-11 Alexandra Gardens
- (d) from the north-eastern building line of Nos 1-11 Alexandra Gardens to the north-eastern extremity of Alexandra Gardens

**Riverside Drive,**

**North-east side**

- (a) from its junction with Great Chertsey Road (A316) to a point 18 metres north-west of the common boundary of Nos. 2 and 3 Riverside Drive
- (b) from a point 21 metres north-west of a point opposite the north-western kerb line of Staveley Gardens to a point 12 metres south-east of the south-eastern kerb line of Alexandra Gardens

**South-west side**

- (a) from its junction with Great Chertsey Road (A316) to a point 18 metres north-west of the extended common boundary of Nos. 2 and 3 Riverside Drive
- (b) from a point 21 metres north-west of the north-western kerb line of Staveley Gardens to a point 12 metres south-east of a point opposite the south-eastern kerb line of Alexandra Gardens

**Staveley Gardens, Chiswick**

- (a) both sides, between the south-western kerb-line of Riverside Drive, south-westwards for a distance of 12.0 metres

**The Promenade, Chiswick**

**North-west side**

- (a) from a point 15.5 metres north-east of the north-eastern kerb line of The Promenade south-westwards to that kerb line

**North-east side**

- (a) from the north-western kerb line of The Promenade to a point 15 metres north-west of a point opposite the north-western kerb line of Dan Mason Drive

**South-west side**

- (a) from a point 9.5 metres north-west of a point opposite the north-western kerb line of The Promenade north-westwards for a distance of 16.5 metres
- (b) from a point 74 metres north-west of a point opposite the north-western kerb line of The Promenade north-westwards for a distance of 19 metres
- (c) from a point 150.5 metres west of a point opposite the western kerb line of The Promenade north-westwards for a distance of 25.5 metres
- (d) from a point 15 metres south-east of the eastern kerb line of Dan Mason Drive to a point 15 metres north-west of the western kerb line of Dan Mason Drive

# Traffic Management Order

2017 No. 1

---

The London Borough of Hounslow (No.1) Experimental Order 2017

Made on 6 January 2017

Coming into operation on 27 January 2017

---

The Council of the London Borough of Hounslow, after consulting the Commissioner of Police of the Metropolis, in exercise of the powers conferred by section 9 of the Road Traffic Regulation Act 1984<sup>1</sup>, as amended, and of all other enabling powers hereby make the following Order:

1. This Order shall come into operation on 27 January 2017 and may be cited as the London Borough of Hounslow (No.1) Experimental Order 2017.
2. Without prejudice to the validity of anything done or to any liability incurred by the coming into operation of this Order, The London Borough of Hounslow (Waiting and Loading) Order 2008<sup>2</sup>, as amended, shall have effect as though:
  - (a) the items numbered 9, 448, 512 in Schedule 1 to that Order were substituted with the items similarly numbered and set out in Schedule 1 to this Order;
  - (b) the item numbered 1241 was added to Schedule 1 to that Order as set out in Schedule 1 to this Order; and
  - (c) the item number 81 in Schedule 2 to that Order was substituted with the item similarly numbered and set in Schedule 2 to this Order.
3. In pursuance of Section 10(2) of the Road Traffic Regulation Act 1984, the Executive Director of Regeneration, Economic Development & Environment, or a person authorised by him, may, if it appears to him or that person essential in the interests of the expeditious, convenient and safe movement of traffic or for preserving or improving the amenities of the area through which any road affected by the Order runs, modify or suspend the Order or any provision thereof.

Dated sixth day of January 2017

Brendon Walsh  
Executive Director of Regeneration, Economic Development & Environment

---

<sup>1</sup> 1984 c.27

<sup>2</sup> LBH 2008/24

## SCHEDULE 1

1 Item Number	2 Street	3 Restricted hours - see Schedule 3
9	<p>Alexandra Gardens, Chiswick</p> <p>(a) north-west side,</p> <p style="padding-left: 20px;">(i) from the north-eastern kerb-line of Riverside Drive to a point 3.8 metres south-west of the south-western building line of Nos 98-109 Alexandra Gardens</p> <p style="padding-left: 20px;">(ii) from a point 3.2 metres south-west of the north-eastern building line of Nos 98-109 Alexandra Gardens to a point 7.3 metres south-west of the south-western building line of Nos 1-11 Alexandra Gardens</p> <p style="padding-left: 20px;">(ii) from a point 2.9 metres north-east of the north-eastern building line of Nos 1-11 Alexandra Gardens to the north-eastern extremity of Alexandra Gardens, including the turning head</p> <p>(b) south-east,</p> <p style="padding-left: 20px;">(i) from the north-eastern kerb-line of Riverside Drive to a point 19.0 metres north-east of the north-eastern building line of Nos 98-109 Alexandra Gardens</p> <p style="padding-left: 20px;">(ii) from a point 19.0 metres north-east of the north-eastern building line of Nos 98-109 Alexandra Gardens to a point 24.5 metres north-east of the north-eastern building line of Nos 98-109 Alexandra Gardens</p> <p style="padding-left: 20px;">(iii) South-east side, from a point 24.5 metres north-east of the north-eastern building line of Nos 98-109 Alexandra Gardens to a point 34.5 metres north-east of the north-eastern building line of Nos 98-109 Alexandra Gardens</p> <p style="padding-left: 20px;">(iv) from a point 34.5 metres north-east of the north-eastern building line of Nos 98-109 Alexandra Gardens to a point 39.5 metres north-east of the north-eastern building line of Nos 98-109 Alexandra Gardens</p> <p style="padding-left: 20px;">(v) from a point 39.5 metres north-east of the north-eastern building line of Nos 98-109 Alexandra Gardens to a point 17.4 metres south-west of the south-western building line of Nos 1-11 Alexandra Gardens</p> <p style="padding-left: 20px;">(vi) from the north-eastern building line of Nos 1-11 Alexandra Gardens to the north-eastern extremity of Alexandra Gardens</p>	<p>A</p> <p>A</p> <p>A</p> <p>A</p> <p>WW*</p> <p>A</p> <p>WW*</p> <p>A</p> <p>A</p>

**SCHEDULE 1 (continued)**

1 Item Number	2 Street	3 Prescribed hours - see Schedule 3
448	<p>Riverside Drive, Chiswick, London</p> <p>(a) both side,</p> <p>(i) From its junction with Great Chertsey Road (A316) to a point 18 metres north-west of the common boundary of Nos. 2 and 3 Riverside Drive</p> <p>(b) south-west side,</p> <p>(i) From a point 27 metres south-east of the south-eastern kerb line of Great Chertsey Road (A316) to a point 12 metres north-west of the north-western kerb line of Staveley Road</p> <p>(ii) From a point 21 metres north-west of the north-western kerb line of Staveley Road to a point 12 metres south-east of a point opposite the south-eastern kerb line of Alexandra Gardens</p> <p>(iii) From a point 12 metres south-east of a point opposite the south-eastern kerb line of Alexandra Gardens to the western kerb line of The Promenade (including so much of the gated access road into King's House Sports Ground lying to the west of those access gates)</p> <p>(c) north-east side,</p> <p>(i) From a point 27 metres south-east of the south-eastern kerb line of Great Chertsey Road (A316) to a point 12 metres north-west of a point opposite the north-western kerb line of Staveley Gardens</p>	<p>A</p> <p>OO</p> <p>A</p> <p>AAAA*</p> <p>OO</p>

\*Amended item

### SCHEDULE 1 (continued)

1 Item Number	2 Street	3 Prescribed hours - see Schedule 3
512	Riverside Drive, Chiswick, London (continued)	
	(ii) From a point 21 metres north-west of a point opposite the north-western kerb line of Staveley Gardens to a point 12 metres south-east of the south-eastern kerb line of Alexandra Gardens	A
	(iii) From a point 12 metres south-east of the south-eastern kerb line of Alexandra Gardens south-eastwards for a distance of 160 metres	AAAA*
	(iv) From a point 201 metres south-east of the south-eastern kerb line of Alexandra Gardens south-eastwards for a distance of 45.5 metres	AAAA*
	(v) From a point 264 metres south-east of the south-eastern kerb line of Alexandra Gardens south-eastwards for a distance of 53 metres	AAAA*
	(vi) From a point 334.5 metres south-east of the south-eastern kerb line of Alexandra Gardens south-eastwards for a distance of 48 metres	AAAA*
	(vii) From a point 399 metres south-east of the south-eastern kerb line of Alexandra Gardens to the eastern kerb line of The Promenade	AAAA*
	Staveley Gardens, Chiswick,	
	(a) both side,	
	(i) From the south-western kerb line of Riverside Drive south-westwards for a distance of 12 metres	A*
(ii) From a point 12 metres south-west of the south-western kerb line of Riverside Drive south-westwards for a distance of 8 metres	OO*	
(b) north-west side,		
(i) from a point 10.0 metres north-east of the north-eastern kerb-line of the road leading to Nos.5-16 Staveley Gardens to a point 10.0 metres south-west of the south-western kerb-line of the road leading to Nos.5-16 Staveley Gardens	OO	

\* Amended item



### SCHEDULE 1 (continued)

1 Item Number	2 Street	3 Prescribed hours - see Schedule 3
	<p>Staveley Gardens, Chiswick (continued)</p> <p>(ii) from a point 10.0 metres north-east of the north-eastern kerb-line of the road leading to Nos.17-28 Staveley Gardens to a point 10.0 metres south-west of the south-western kerb-line of the road leading to Nos.17-28 Staveley Gardens</p> <p>(c) north-west &amp; south-west side,            (i) from a point 10.0 metres north-east of the north-eastern kerb line of the road leading to Nos.29-50 Staveley Gardens to a point 17.0 metres north-west of the north-western kerb line of the road leading to Nos.51-74 Staveley Gardens</p> <p>(d) south-west side,            (i) from a point 5.0 metres north-west of the north-western kerb line of the road leading to Nos.51-74 Staveley Gardens to a point 5.0 metres south-east of the south-eastern kerb line of the road leading to Nos.51-74 Staveley Gardens</p> <p>(e) south-east &amp; north-east side,            (i) from a point 20.0 metres north-east of the north-eastern kerb line of the road leading to Nos. 29-50 Staveley Gardens to a point 30.0 metres south-east of the south-eastern kerb line of the road leading to Nos. 51-74 Staveley Gardens</p>	<p>OO</p> <p>OO</p> <p>OO</p> <p>OO</p>
1241	<p>The Promenade, Chiswick, London</p> <p>(a) west side,            (i) From the southern kerb line of Riverside Drive southwards for a distance of 12 metres</p> <p>(b) east side,            (i) From the northern kerb line of Riverside Drive southwards for a distance of 130 metres</p>	<p>AAAA*</p> <p>AAAA*</p>

\* Amended item

### SCHEDULE 1 (continued)

1 Item Number	2 Street	3 Prescribed hours - see Schedule 3
	<p>The Promenade, Chiswick, London (continued)</p> <p>(c) north-east side,            (i) From the north-western kerb line of The Promenade to a point 15 metres north-west of a point opposite the north-western kerb line of Dan Mason Way</p> <p>(d) south-west side,            (i) From a point 15 metres south-east of the south-eastern kerb line of Dan Mason Drive to a point 5 metres north-west of the north-western kerb line of Dan Mason Drive</p> <p>(ii) From a point 150.5 metres north-west of the western kerb line of The Promenade north-westwards for a distance of 25.5 metres</p> <p>(iii) From a point 74 metres north-west of the north-western kerb line of The Promenade north-westwards for a distance of 19 metres</p> <p>(iv) From a point 9.5 metres north-west of a point opposite the western kerb line of The Promenade north-westwards for a distance of 16.5 metres</p> <p>(e) north-west side,            (i) From the north-eastern kerb line of The Promenade to a point 15.5 metres north-east of that kerb line</p>	<p>A*</p> <p>A*</p> <p>A*</p> <p>A*</p> <p>A*</p> <p>A*</p>

\* Amended item

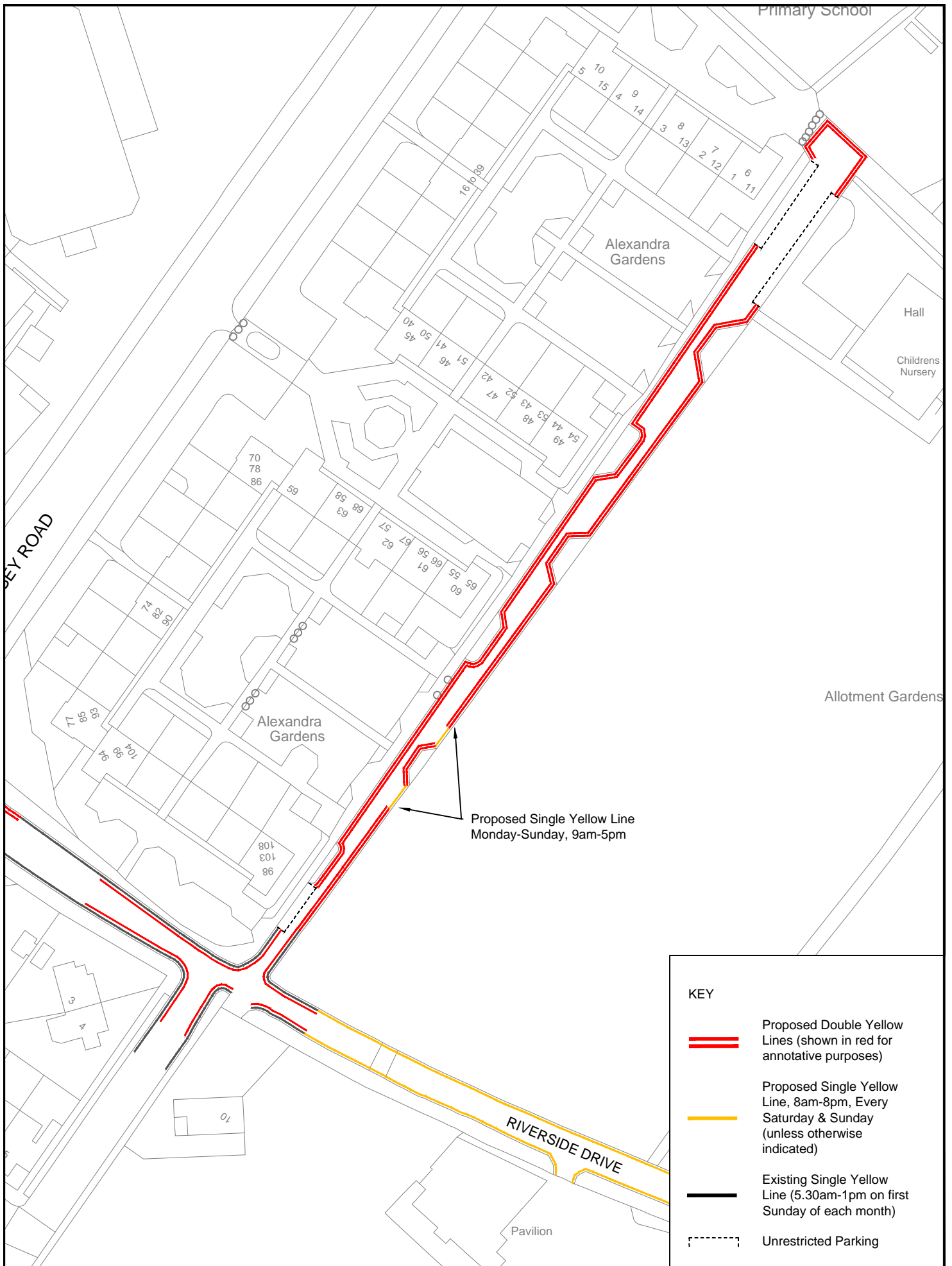
## SCHEDULE 2

1 Item Number	2 Street	3 Restricted hours - see Schedule 3
81	<p>Staveley Gardens, Chiswick, London</p> <p>(a) both side,</p> <p style="padding-left: 20px;">(i) from a point 12.0 metres south-west of the south-western kerb line of Riverside Drive, south-westwards for a distance of 8.0 metres</p> <p>(b) north-west side,</p> <p style="padding-left: 20px;">(i) from a point 10.0 metres north-east of the north-eastern kerb-line of the road leading to Nos.5-16 Staveley Gardens to a point 10.0 metres south-west of the south-western kerb-line of the road leading to Nos.5-16 Staveley Gardens</p> <p style="padding-left: 20px;">(ii) from a point 10.0 metres north-east of the north-eastern kerb-line of the road leading to Nos.17-28 Staveley Gardens to a point 10.0 metres south-west of the south-western kerb-line of the road leading to Nos.17-28 Staveley Gardens</p> <p>(c) north-west &amp; south-west side,</p> <p style="padding-left: 20px;">(i) from a point 10.0 metres north-east of the north-eastern kerb line of the road leading to Nos.29-50 Staveley Gardens to a point 17.0 metres north-west of the north-western kerb line of the road leading to Nos.51-74 Staveley Gardens</p> <p>(d) south-west side,</p> <p style="padding-left: 20px;">(i) from a point 5.0 metres north-west of the north-western kerb line of the road leading to Nos.51-74 Staveley Gardens to a point 5.0 metres south-east of the south-eastern kerb line of the road leading to Nos.51-74 Staveley Gardens</p>	<p>40*</p> <p>40</p> <p>40</p> <p>40</p> <p>40</p>





\* Amended item

**SCHEDULE 2 (continued)**

1 Item Number	2 Street	3 Restricted hours - see Schedule 3
	<p>Staveley Gardens, Chiswick (continued)</p> <p>(e) south-east &amp; north-east side,                      (i) from a point 20.0 metres north-east of the north-eastern                      kerb line of the road leading to Nos. 29-50 Staveley                      Gardens to a point 30.0 metres south-east of the south-                      eastern kerb line of the road leading to Nos. 51-74                      Staveley Gardens</p>	<p align="center">40</p>



**KEY**

-  Proposed Double Yellow Lines (shown in red for annotative purposes)
-  Proposed Single Yellow Line, 8am-8pm, Every Saturday & Sunday (unless otherwise indicated)
-  Existing Single Yellow Line (5.30am-1pm on first Sunday of each month)
-  Unrestricted Parking


This map is based upon Ordnance Survey material with the permission of Ordnance Survey on behalf of the Controller of Her Majesty's Stationery Office © Crown copyright. Unauthorised reproduction infringes Crown copyright and may lead to prosecution or civil proceedings.  
London Borough of Hounslow 100019263 2016


Drawing Status					
Proposed					
Drawn	Approved	Date	Scale	Size	
AN	AS	DEC-16	1:1000	A4	
Dwg No				Rev	
				-	

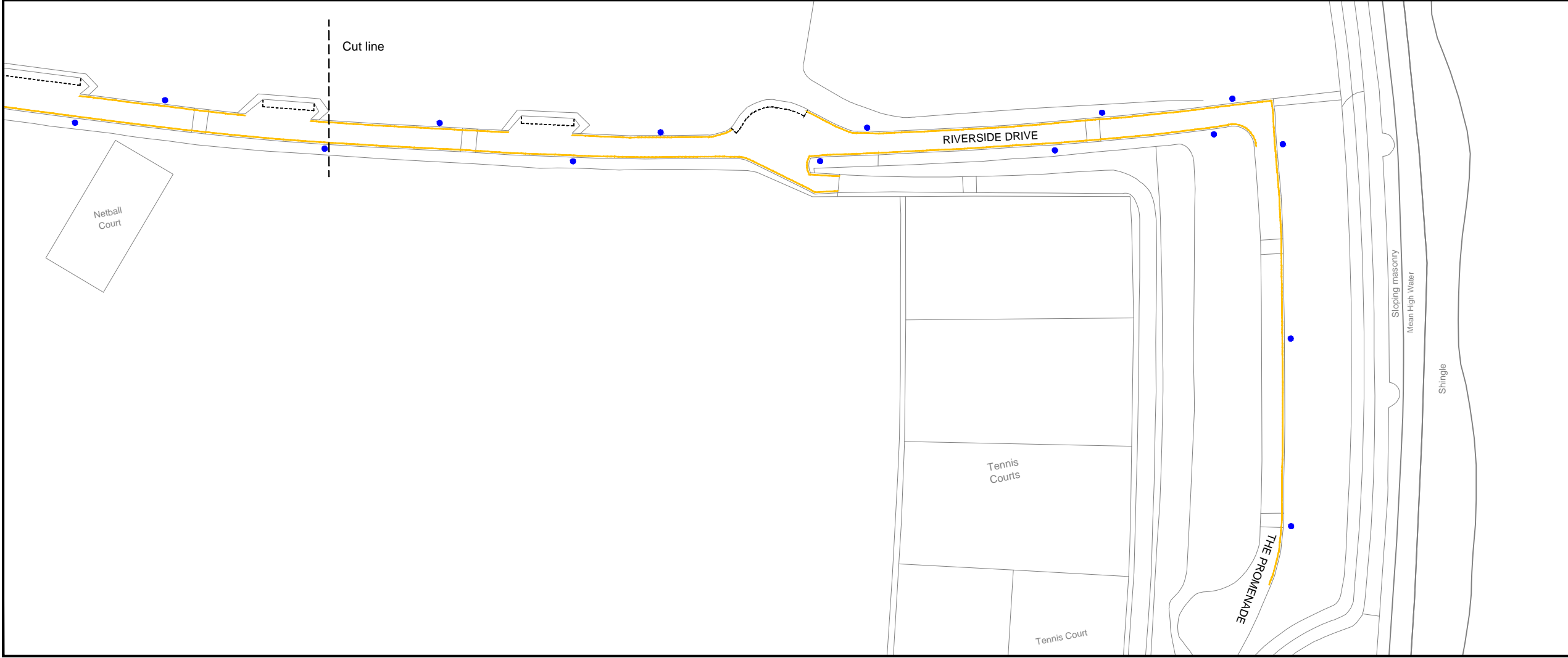
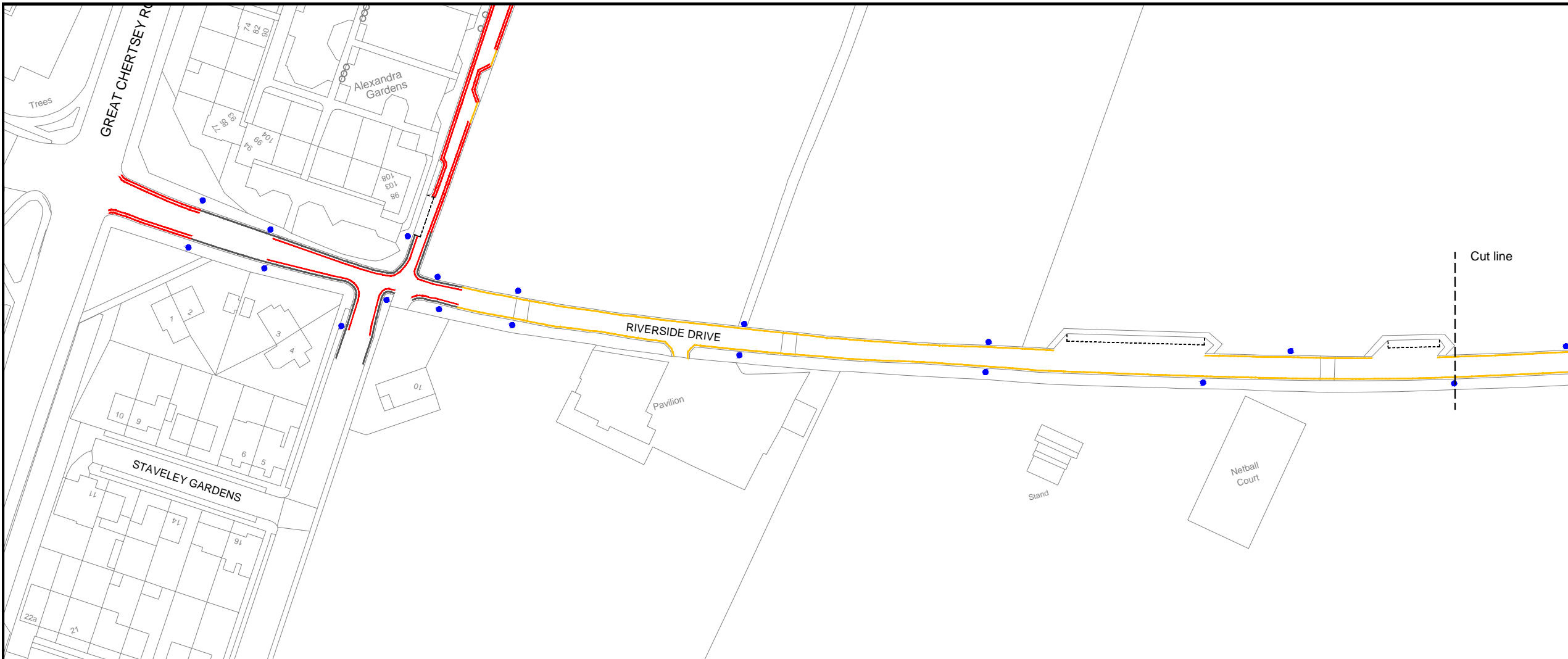
Project	ALEXANDRA GARDENS, CHISWICK
Drawing Title	PROPOSED SINGLE AND DOUBLE YELLOW LINE WAITING RESTRICTIONS

Brendon Walsh, Executive Director  
Regeneration, Economic Development & Environment  
Traffic and Transport  
The Civic Centre, Lampton Road  
Hounslow, TW3 4DN

**REDe**

Client  
 London Borough of Hounslow





**KEY**

- == Proposed Double Yellow Lines (shown in red for annotative purposes)
- Proposed Single Yellow Line, 8am-8pm, Every Saturday & Sunday (unless otherwise indicated)
- Existing Single Yellow Line (5.30am-1pm on first Sunday of each month)
- Unrestricted Parking
- Post / Sign Locations (indicative)

**NOTES**

The existing single yellow lines at the Staveley Gardens / Riverside Drive junction are proposed for upgrade to double yellow lines.

This map is based upon Ordnance Survey material with the permission of Ordnance Survey on behalf of the Controller of Her Majesty's Stationery Office © Crown copyright. Unauthorised reproduction infringes Crown copyright and may lead to prosecution or civil proceedings. -London Borough of Hounslow 100019263 2016

Brendon Walsh, Executive Director  
 Regeneration, Economic Development & Environment  
 Traffic and Transport  
 The Civic Centre, Lampton Road  
 Hounslow, TW3 4DN



Client  
**London Borough of Hounslow**

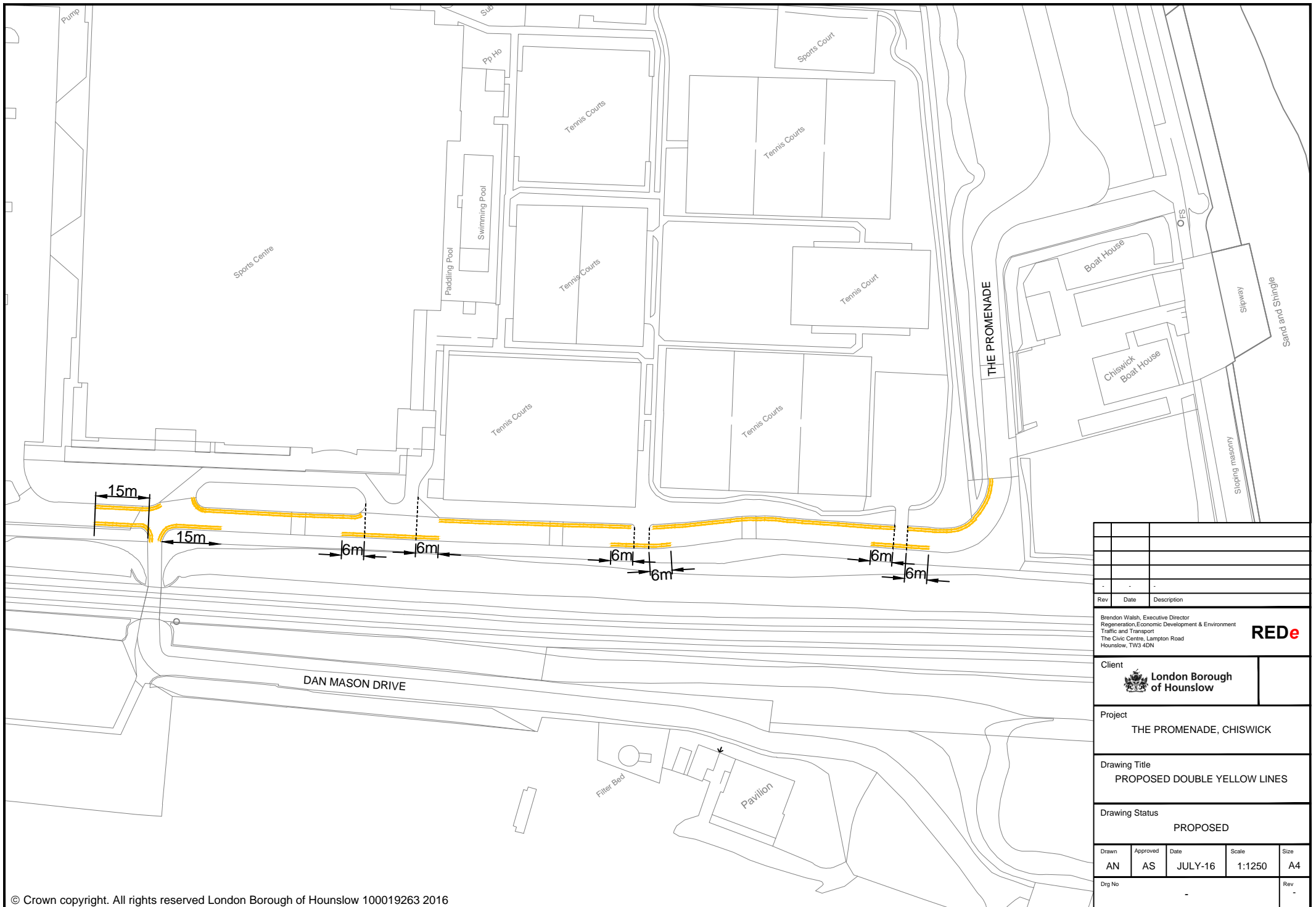
Project  
 RIVERSIDE DRIVE, CHISWICK

Drawing Title  
 PROPOSED SINGLE YELLOW LINE WAITING RESTRICTIONS

Drawing Status  
 DRAFT

Drawn	Approved	Date	Scale	Size
AN	AS	DEC-16	1:1250	A3

Drg No	Rev
-	-



Rev	Date	Description
Brendon Walsh, Executive Director Regeneration, Economic Development & Environment Traffic and Transport The Civic Centre, Lampton Road Hounslow, TW3 4DN		
<b>Client</b> 		<b>REDe</b>
<b>Project</b> THE PROMENADE, CHISWICK		
<b>Drawing Title</b> PROPOSED DOUBLE YELLOW LINES		
<b>Drawing Status</b> PROPOSED		
Drawn	Approved	Date
AN	AS	JULY-16
Scale	Size	
1:1250	A4	
Dwg No	Rev	
-	-	