

Feltham Parks - Introduction

Introduction

There are currently **two Masterplan studies** being carried out in Feltham. The **Town Centre Masterplan by Urban Initiatives Studio** is looking to analyse the challenges and opportunities in Feltham to inform a strategy for the future through a Vision Masterplan.

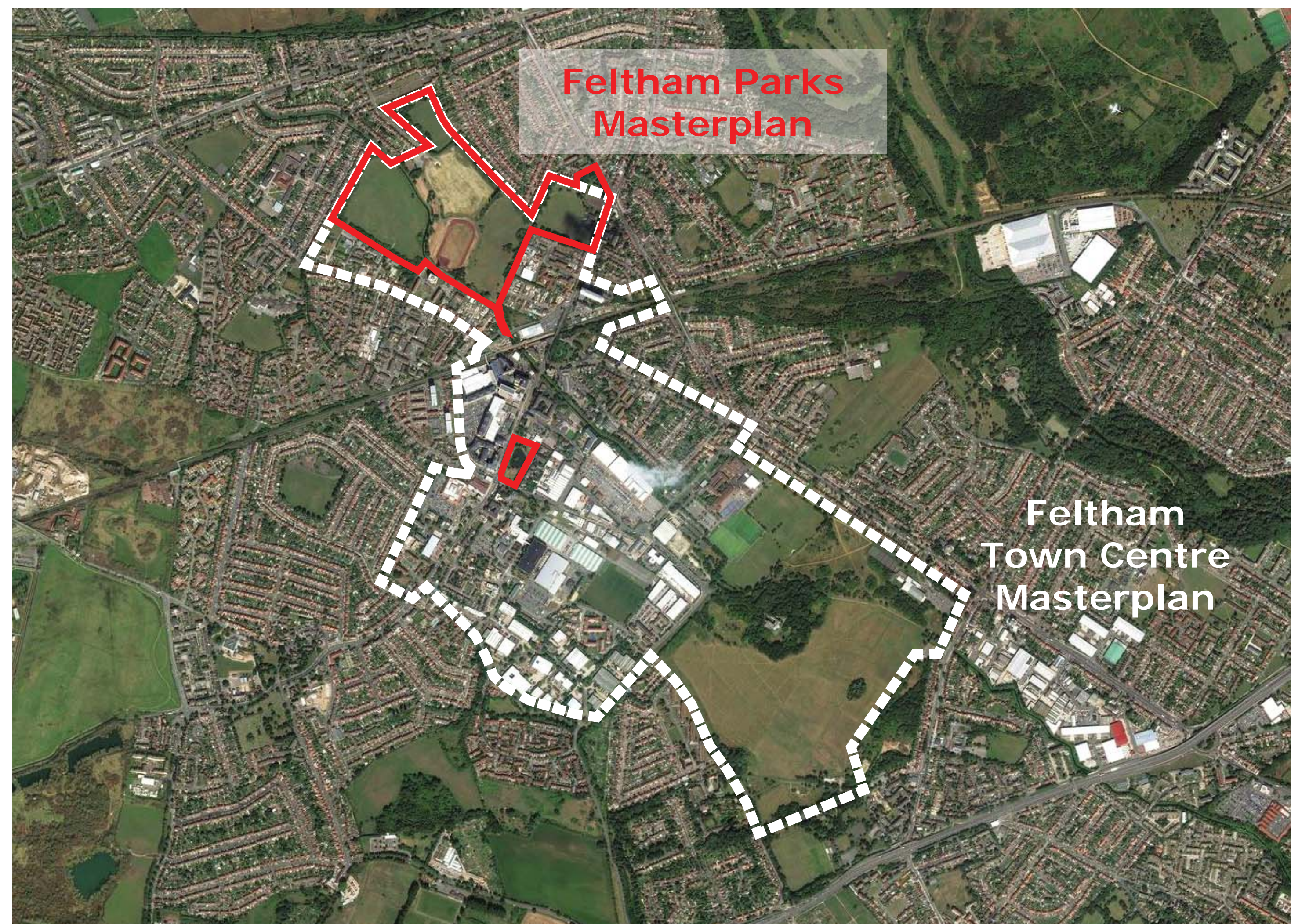
The **Feltham Parks Masterplan** is solely looking at **improvements to the Park**, and any proposals will feed into the Town Centre Masterplan.

The **Feltham Parks Masterplan** is specifically looking at improving the local green spaces to inspire more people to be **active**, create **safer spaces** and with more **relevant facilities**. This Masterplan is informed by **local residents** and also the wider regeneration plan for the area which is already underway known as the Feltham Masterplan.

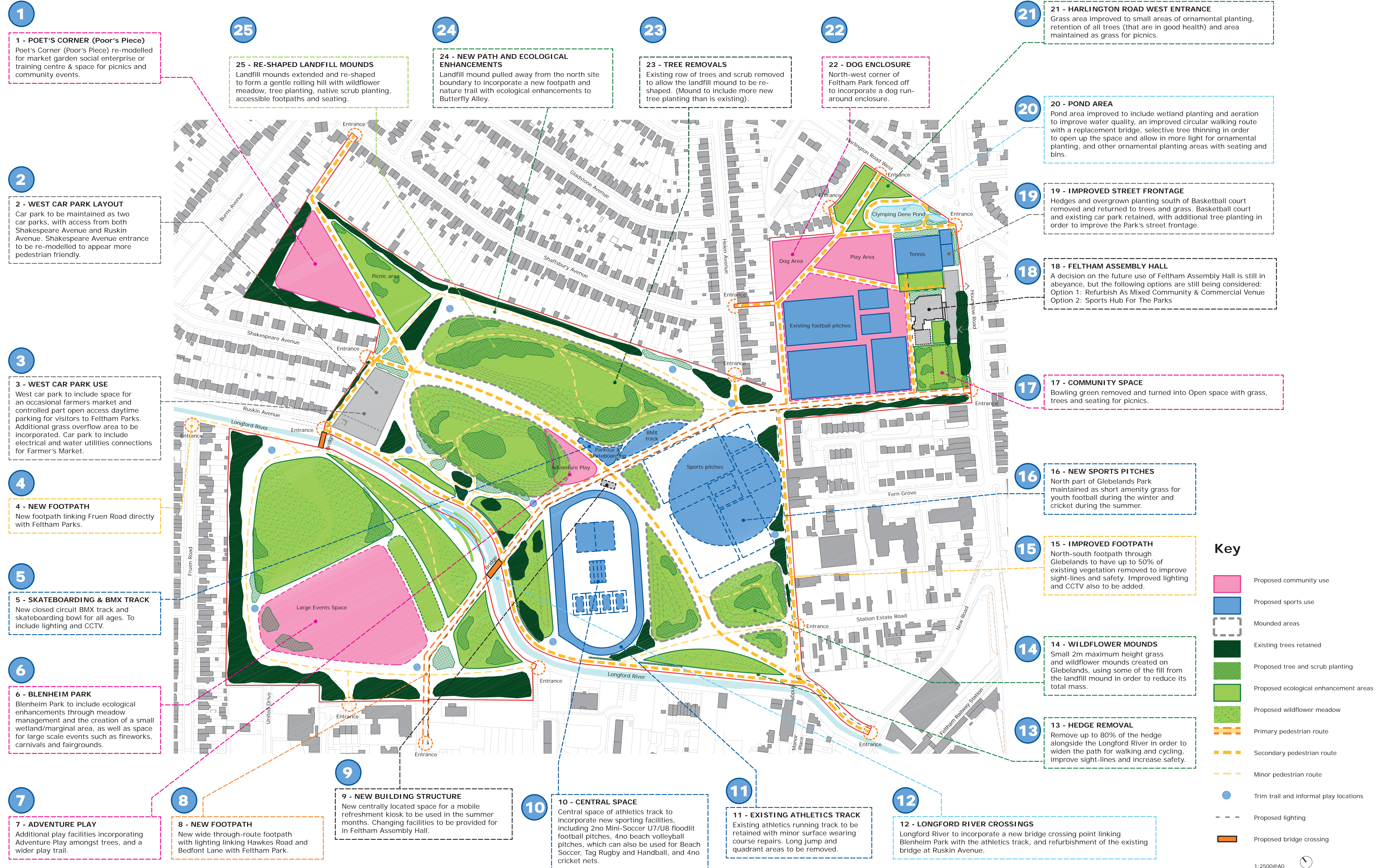
The Feltham Parks Masterplan covers the following green spaces:

- 1 - Feltham Park
- 2 - Feltham Arena
- 3 - Glebelands Park
- 4 - Poet's Corner (Poor's Piece)
- 5 - Blenheim Park
- 6 - Feltham Green

The following set of boards show the **Vision Masterplan** for the various areas of **Feltham Parks** and **Feltham Green**.

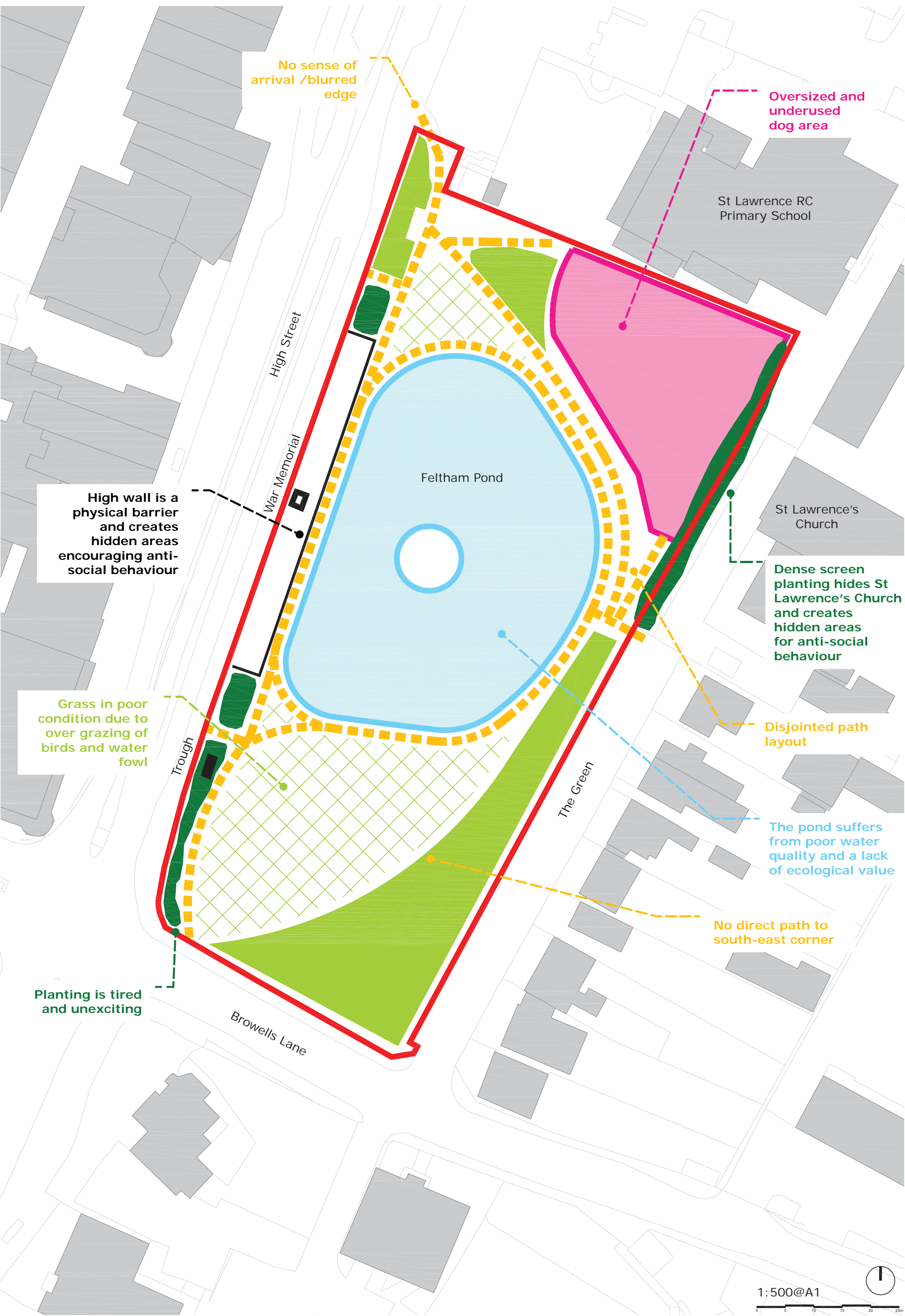


Feltham Parks - RIBA Stage 2 Masterplan



Feltham Parks - RIBA Stage 2 Masterplan Feltham Green

Existing Site



Masterplan



26 - DOG AREA
Existing dog enclosure area within Feltham Green to be removed and replaced with ornamental planting.

27 - NEW STEPS
Introduce 2no sets of 10m wide steps from the High Street down to Feltham Pond in order to improve circulation and sight-lines (War Memorial retained in place).

28 - VIEW OF CHURCH
Retain the trees but remove the hedge in front of St. Lawrence's Church in order to improve sight-lines and give the Church a visual relationship with the Green.

29 - POND ENHANCEMENTS
Improve water quality and setting of Feltham Pond by installing fountains in order to improve aeration, wetland planting areas for ecological enhancement, and additional ornamental and shrub planting to perimeter.

30 - FOOTPATHS
Improve footpath layout by creating a new footpath from the south-east corner towards the Pond, and a new footpath link from east to west directly linking the entrance to St. Lawrence's Church with the High Street.

Feltham Parks - Next Steps

Funding Strategy

The feasibility study undertaken identified **two** clear approaches for delivering the goals set out in **Feltham Parks Masterplan** derived from consultation and potential funding available.

From the extensive consultation, improving **access and security** was the main priority for residents followed by **improved quality** and **range of activities**.

Although there is a significant **£1m budget** secured already, the council will still need to find **further funding** to deliver the vision of the Masterplan. The review of funding sources, the eligibility of the Parks improvements for those sources, and the amounts likely to be available at different times indicates that the Parks could expect a funding scenario phased as follows:

Phase 1 (2017/18)

Feltham Arena, Glebelands, Blenheim and Feltham Park improvement to **Access and Security** is estimated to **£670k**. Funded from secured **Parks budget**, a proportion of the **CIL**, and from a bid to the **London Marathon Trust** as well as committed **GLA funding** for cycling and footpaths.

Phase 2

Envisages improvements to **Feltham Green** with the costs of **£380k** hopefully being met from the **GLA Good Growth funding**.

Phase 3

This phase is principally about **improving existing Sports facilities**, introducing new **play features** and **remodeling landscape**. This will require further business plan to source operator.

Next Steps

The proposal below indicates where **£670k** could be spent to address the primary issues of improving **access and safety**, including new **axial pedestrian paths**, **new bridge crossing**, **removal of some overgrown vegetation** and **removal of the old bowling green** to improve the visibility of the park from Hounslow Road. This design of this scheme will be developed further.

