



London Borough
of Hounslow

Your Guide To Recycling



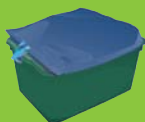
Contents



Introduction 1

Get Involved 2

Paper Bag 3



Recycling Box 4

Small Electrical Items 5

Large Food Waste Bin 6



Small Food Waste Bin 7

Garden Waste Sack 8

Plastic Sack 10



Rubbish Bag 11

What to do on Collection Day 12

Dear Resident

The Borough is now recycling over 34% of its waste. This is a great achievement so well done to everyone who uses their recycling services. Every year we need to increase recycling, so can you do more? Use this guide to help you recycle as much as possible; you can recycle more than you think.

Why Recycle?

- Landfill is expensive. The cost increases by £8 a tonne per year, so throwing away rubbish increases your council tax bill.
- Recycling helps to reduce landscape destruction and loss of habitats.
- Hounslow is committed to closed loop recycling. This means that where possible we will recycle your waste back into the same items. For example a drinks can will become a new drinks can. This saves raw materials like wood, tin, aluminium and oil for future generations and has a lower carbon footprint too.
- Recycling helps to reduce emissions of the global warming gas, methane, which is produced when biodegradable items like food, garden waste, paper and textiles rot down in landfill.

Recycling has so many benefits there's every reason to get involved!

Councillor Corinna Smart
Executive Member for the Environment

Get Involved

1. Order your set of recycling containers or any replacements online at www.hounslow.gov.uk/recycling, or call **020 8583 5555**.



2. Clearly mark your new containers with your house number.



3. Use this guide to help you recycle as much as possible. You can recycle more than you think!



4. Put your containers out for collection on the correct day. Refer to your calendar or visit the website at www.hounslow.gov.uk/collection_days and download it yourself.



Paper Bag

Weekly Collection

You can recycle all the following types of paper using your paper bag. Your bag will be collected weekly on your normal collection day.



All Paper



Magazines



Newspapers



Catalogues, Yellow Pages and Telephone Directories



Envelopes

Do not use this bag for cardboard. Cardboard can be recycled using your recycling box.

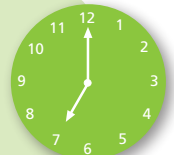
Shredded Paper Recycling

You can recycle small amounts of shredded paper using your food waste bin. For larger amounts use a supermarket carrier bag with the handles tied and place it next to your recycling box (one bag per week). For excess amounts you will need to book a collection by calling 020 8583 5555.



Shredded Paper

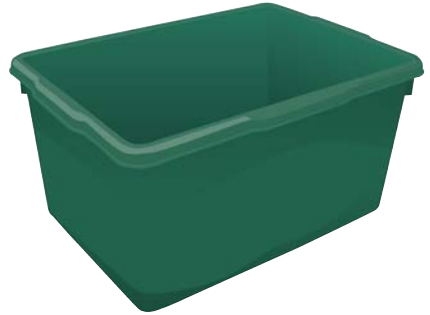
This paper bag acts as a lid for the recycling box. Please place the bag on top of the box and place out for collection by **7.00am** on your collection day. It must be placed at the front boundary of your property, clearly visible from the road (not on the pavement).



Recycling Box

Weekly Collection

You can recycle all the following materials in your recycling box. Your box will be collected weekly on your normal collection day.



Cans and Foil Aerosol Containers Please rinse
Please remove plastic lids - we cannot accept paint or gas canisters



Glass Bottles and Jars
Please rinse



Cardboard
Please remove any plastic packaging and completely flatten



Textiles
Please place clean and dry clothes in carrier bags



Shoes
Please place clean and dry paired shoes in carrier bags



Household and Car Batteries
Please place small batteries in a carrier bag and car batteries beside the recycling box



Motor Oil
In a sealed container



Drink Cartons
Please squash



Mobile Phones and Household Printer Cartridges

Large pieces of cardboard must be cut down to fit inside your recycling box.

4 If you have large amounts of cardboard please call us before your collection day.

Small Electrical Items

Small electric or battery operated items can be recycled using your recycling box collection. The items should be contained completely within an untied supermarket carrier bag for collection and placed inside or next to your recycling box.

You can recycle any item powered by battery or with a plug. We will collect one carrier bag per week from your home. Please place your carrier bag in or beside your box.

Some Examples



Clock



Curling Tongs



Hairdryer



Headphones



Iron



Kettle



Razor

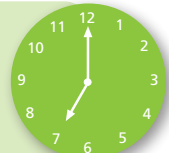


Toaster



Watch

Please place your box out before **7.00am** on your collection day, at the front boundary of your property, clearly visible from the road (not on the pavement).



Large Food Waste Bin



Weekly Collection

You can recycle all your cooked and raw food waste using your large lockable food waste bin. Your bin will be collected weekly on your normal collection day.



Dairy Products such as Cheese



Eggs and Egg Shells



Out of date Food
Please remove packaging



Plate Scrapings



Meat and Meat Bones



Fruit and Vegetable Peelings



Bread and other Baked Products



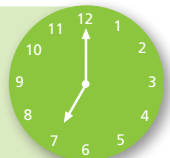
Fish and Fish Bones



Coffee Grounds and Tea Bags

Please do not use any plastic bags in your food waste containers.

Please place your closed bin out before **7.00am** on your collection day, at the front boundary of your property, clearly visible from the road (not on the pavement).



Small Food Waste Bin

Use the small food waste bin in your kitchen to store your food scraps before emptying into your large food waste bin.



Using a liner helps to stop food sticking to your bins.

Regularly cleaning your bins also helps keep them clean.

You can use kitchen towel, newspapers, shredded paper or compostable liners to line your bins.



Kitchen Towel



Newspaper



Shredded Paper



Compostable Liners

Compostable liners are available to purchase from most local supermarkets.



If you are using compostable liners, please only use liners with this symbol to line your food waste bins.

Garden Waste Sack

Alternate Weekly Collection

You can have your garden waste collected FREE using your garden waste sacks.

Garden waste will be collected on your normal collection day one week, and plastics the next.



Grass Cuttings



Leaves



Hedge Clippings



Flowers and Weeds



Twigs and Small Branches



Fallen Fruit from your garden only

Each household has been given two green garden waste sacks for their garden waste which should be adequate for the majority of households. If you regularly produce more garden waste you can purchase two additional green garden waste sacks at £10 each. The maximum number of these green garden waste sacks that can be placed out for collection is four. Please call 020 8583 5555 to order garden waste sacks.

White Hounslow Council compostable garden waste sacks can be used in addition to your green garden waste sacks.

Compostable sacks are available to purchase from all Hounslow Libraries or by calling 020 8583 5555. These 120 litre sacks come in packs of five and cost £5.00 per pack.

Prices of garden waste sacks are subject to change.



Please do not make your sack too heavy for you or the crew to carry.

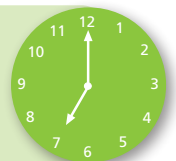
We cannot accept soil, compost, sand, rubble or animal bedding in any garden waste sacks.

Please remove as much of the soil as possible from the rootball before placing it into your sack.

Larger quantities of garden waste can be taken to Space Way Reuse and Recycling Centre, North Feltham Trading Estate, Pier Road, off Faggs Road Feltham TW14 0TH

Do not place garden waste in black sacks. The rubbish crews have been instructed not to collect garden waste in black sacks

Please place your sacks out before **7.00am** on your collection day, at the front boundary of your property, clearly visible from the road (not on the pavement).



Plastics Sack

Alternate Weekly Collection

You can recycle your household plastic packaging using your plastics sack.

Plastics will be collected on your normal collection day one week, and garden waste the next.



Plastic Bottles
Please remove lids



Plastic Tubs



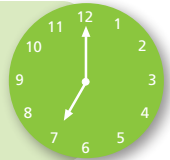
Plastic Pots



Plastic Trays

Please rinse and squash all plastic packaging and recycle only the plastics listed here.

Please place your sack out before **7.00am** on your collection day, at the front boundary of your property, clearly visible from the road (not on the pavement).



Rubbish Bag

Weekly Collection

General household rubbish collection is for the day to day rubbish generated from living within the home. This does not include waste from home improvements.

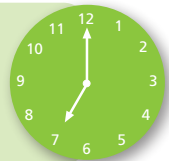
All rubbish should be properly stored in sealed rubbish bags. These can be purchased from any supermarket. We do not supply any type of rubbish container to our residents.



Rubbish collected will be sent to landfill.



Please place your sack out before **7.00am** on your collection day, at the front boundary of your property, clearly visible from the road (not on the pavement).



Is your rubbish causing a problem?

Do not place waste on the pavement or grass verge, around lampposts or litter bins. It is an offence to place waste out before your collection day. This is classed as fly-tipping and may attract a penalty.

What to do on collection day

If you have a front garden, path or driveway place your rubbish bags and recycling containers inside the front boundary of your property. Containers should be clearly visible from the road, so that the crews can see them. Make sure the correct containers are placed out by 7am to ensure they are collected.



Assisted collection service

We are committed to equal opportunities so we have made provision for residents who are not physically able to place out their own rubbish and recycling for collection. Please call **020 8583 5555** to discuss your needs.

What to do if your collection is missed

We will endeavour to collect from every household placing their rubbish and recycling out at the correct time. If your rubbish or recycling is not collected by 5.00pm on your collection day, please report your missed collection at **www.hounslow.gov.uk/recycling** or call our call centre on **020 8583 5555** and we will arrange for it to be collected.

Missing or broken recycling containers

We appreciate your commitment to recycling, so if your containers are broken or you are unable to find your recycling containers, please visit **www.hounslow.gov.uk/recycling** or call **020 8583 5555** to order a replacement.

Bulky Waste

If you have bulky waste such as furniture or large electrical items, we are able to provide a separate collection under our Tidy Town service. This is a chargeable service, please visit **www.hounslow.gov.uk/recycling** or call **020 8583 5555** for more information.

Alternatively, you can take the items to Space Way Reuse and Recycling Centre, North Feltham Trading Estate, Pier Road, off Faggs Road, Feltham TW14 0TH.
www.hounslow.gov.uk/recycling or call **020 8890 0917**.

Space Way Opening times

Public side 8: 00am – 4:00pm (last entry 3:45pm)

Trade side including vans and trailers 8:00am - 3:00pm (last entry 2:45pm)

Please note these times are subject to change, check the website for up to date information or call 020 8890 0917.

Keep this guide somewhere safe and if you have any questions or queries, please get in touch.

Please visit **www.hounslow.gov.uk/recycling** or call **020 8583 5555**.



Printed on 60%
Recycled Paper

London Borough of Hounslow
Civic Centre, Lampton Road
Hounslow TW3 4DN
www.hounslow.gov.uk/recycling
E-mail: recycling@hounslow.gov.uk
Telephone: 020 8583 5555

Accessible formats and translations:

ترجمے کی مفت سہولت
انچواڈ کی سولف سہوا
اڑنلہہ ڈی ڈھڈ ڈہڈہ



020 8583 2299