



**London Borough  
of Hounslow**

Thursday, 4 February 2010

# **Hounslow's Speech and Language Pathfinder Project**

**NHS**

*Hounslow*

# Overview of presentation

- **A – Background to the project**
- **B – Why it's important**
- **C – Aims of the project, timescales, output**
- **D – Relevance to the Children's Trust Board?**
- **E – Q&A**

# A - Background to the project

- **Oct 2008: Started as a scrutiny review after a parent referred the issue of S&L therapist turnover (though not quality) to the Children & Young People Scrutiny Panel**
- **Dec 2008: Government allocated £1.2 million in response to the John Bercow MP review into Speech & Language**
- **July 2009: Turned scrutiny review into pathfinder bid. Hounslow one of 16 to be awarded pathfinder status.**

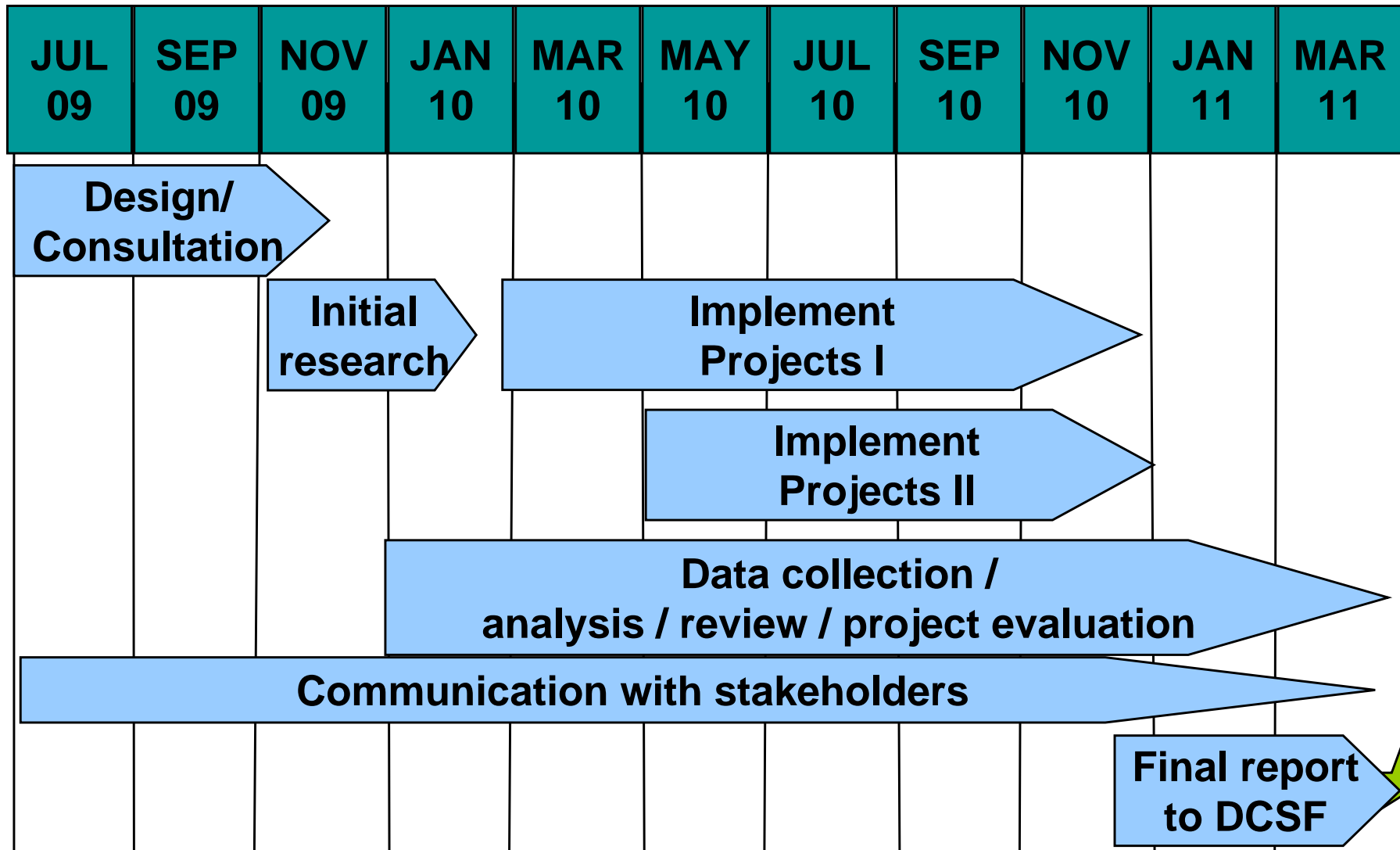
# **B – Why speech and language is important**

- **Local nursery data indicates approximately 50% of children entering the education system have speech and language skills that are significantly lower than those of other children of the same age.**
- **Ripley & Yuill (2005) 66% boys excluded from school (8 – 16 years) had significant expressive language problems**

# C - Aims of the project

- 1. To provide commissioners with the *detail* about the high level of need for speech and language interventions, in order for them to commission effectively.**
- 2. To pilot and evaluate models of service delivery to inform commissioners**
- 3. To engage with parents/carers of children with SCLN to improve outcomes.**

# C - Timescales



# **D – Relevance to Children’s Trust Board (CTB)?**

- It is a good news story nationally in terms of what Hounslow is doing.**
- It is about maximising existing resources in this area.**
- It is about measuring and improving outcomes.**
- It will provide a model of commissioning from needs analysis through to intervention evaluation which can be applied to a range of Children’s services.**

# E – Q&A

- **Any questions?**
- **Also by email:**  
[anne.breaks@hounslowpct.nhs.uk](mailto:anne.breaks@hounslowpct.nhs.uk)