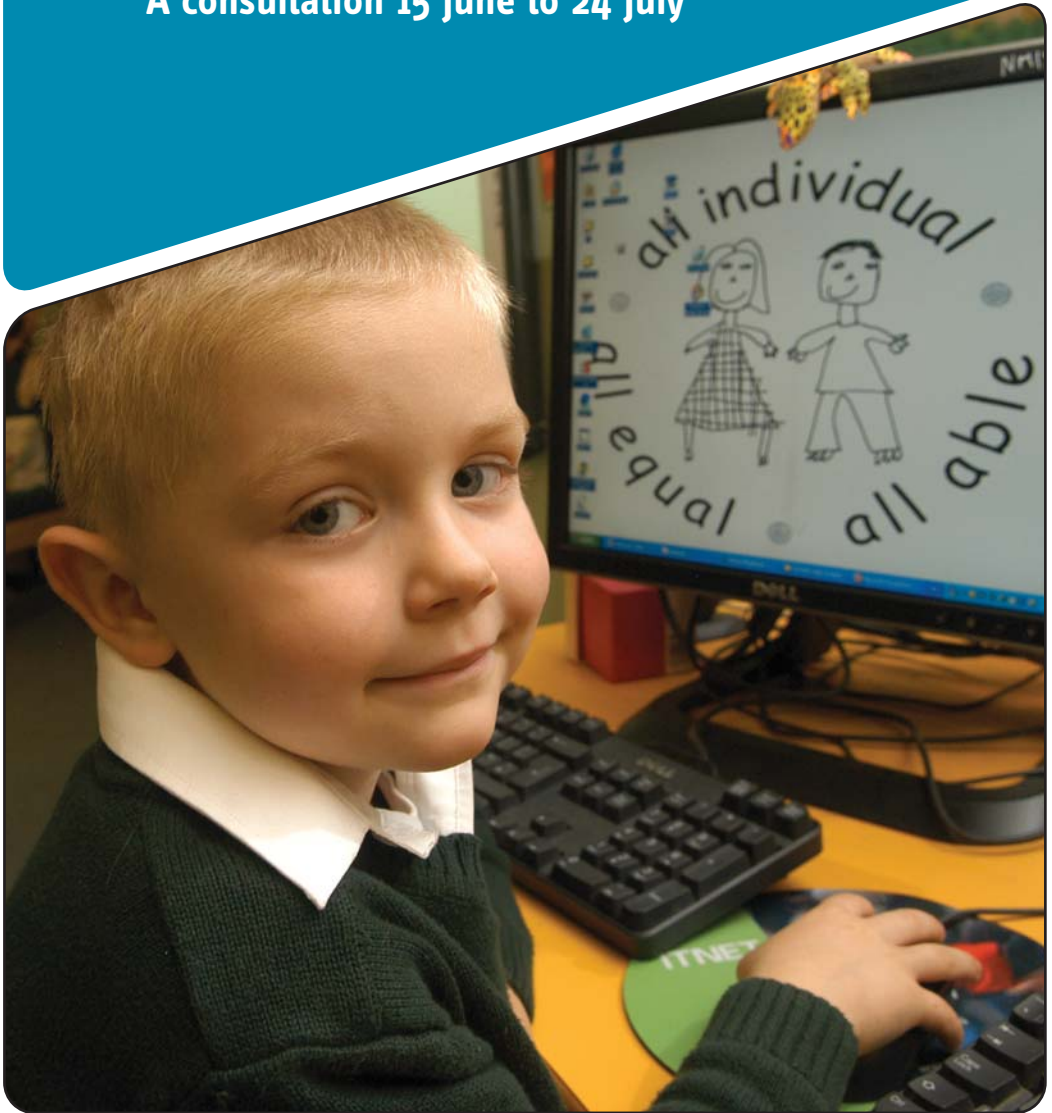




London Borough
of Hounslow

Providing more primary school places in Chiswick

A consultation 15 June to 24 July



*Hounslow has one of the fastest
growing birth rates in London.*

*The building of new houses is bringing
many more families into our borough.*

*This means that demand for places
in our primary schools is growing fast.*

Contents

- 4 Introduction**
- 5 Key dates**
- 6 Background**
- 9 What happens next?**
- 10 How to have your say**
- 11 Questionnaire**
- 15 Frequently asked questions**
- 18 Your notes**

This consultation is being carried out in joint partnership with the Diocese of Westminster and St Mary's RC Primary School, Chiswick.

Introduction

Making sure there are enough places in our schools for all children who need them is an important responsibility and a big part of our promise to provide the best possible education for all.

This booklet explains proposals to provide more primary school places in Chiswick. The proposals are to:

- Expand The William Hogarth Primary School from 30 Reception places a year to 60 Reception places a year from September 2011
- Expand St Mary's Catholic Primary School from 30 Reception places a year to 60 Reception places a year from September 2012.

These extra places are needed as a result of increasing birth rates, the impact of housing developments, and a greater demand for local state school education. These proposals are part of Hounslow's overall increase in primary school places.



The views of parents and carers of school age and pre-school age children are of the utmost importance to these plans.

KEY DATES

The consultation runs from 15 June to 24 July 2009. The expansions of the two schools would follow different timescales as shown below:

	William Hogarth	St Mary's
Consultation	15 June to 24 July 2009	15 June to 24 July 2009
Decision whether to proceed	September 2009	St Mary's governing body probably spring 2010
Statutory Notices	September/October 2009	By summer 2010
Decision on whether to approve and implement	By December 2009	By September 2010
First year of admission under new arrangements	Autumn 2010 applications for September 2011 Reception	Autumn 2011 applications for September 2012 Reception

As St Mary's is a voluntary-aided Catholic school, the school's governing body would make the decision whether to publish the statutory notice.

However the final decision for the expansion of either school would be made after the statutory notice period at a meeting of council's Executive.

Background

This consultation is part of the council's response to predictions that we need more places in our primary schools.

To increase capacity at a school, we talk about not only increasing Reception class places, but also permanently increasing the intake of a whole school. By this we mean providing capacity for an extra class in each year group, so that as the children in the expanded year group move up through the school, there is room for an extra class in each year.

Across the borough, the increase in demand for primary school places is a result of:

- An increasing number of births in the borough, including a 37 per cent increase between 2000 and 2008 (3,081 to 4,209)
- Housing developments bringing families into the borough.

Across Hounslow, the number of children beginning school has been approximately 75 per cent of those born five years earlier.

In Chiswick, this proportion has been much lower (around 55 per cent), but we predict that the proportion will increase if there are more places available. This is because of:

- Similar pressure on Reception places in our neighbouring boroughs
- A greater demand for local state school education (including the impact of the current economic climate).

To meet the demand for these school places, we are proposing to expand the following schools in the Chiswick area:

- William Hogarth from 30 Reception places a year to 60 reception places a year from September 2011
- St Mary's from 30 Reception places a year to 60 reception places a year from September 2012.

William Hogarth has already accommodated a bulge class in 2008, which means that it accepted up to another 30 pupils in order to ensure that all children had a school place. Another bulge class will start at the school in September 2009. It is expected that William Hogarth would also accept up to 60 pupils in September 2010 before this proposal would make the increase permanent.

For the 2009 Reception entry, St Mary's adopted a 'random allocation' model as the tie-breaker in its admission policy. This was adopted because the previous distance criteria had reduced the catchment area to approximately 900 metres. If the school expands, the extra places should meet local demand for Catholic places.

As part of the expansion, the council and Westminster Diocese are strongly encouraging the Governors of St Mary's to revert to a distance-based tie-breaker. Two possible options for the distance tie-breaker are to measure distance from home to the school, or from home to either of the local two parish churches served by the school (St Joseph's in Grove Park, and Our Lady of Grace and St Edward in Chiswick). The Governors of St Mary's would welcome your views on the most suitable admissions policy.

Before making any changes, we want to be sure that:

- There is or soon will be demand from parents and carers for new school places in the area
- The school has space for any required building work and more pupils
- Work can be completed without excessive disruption to the existing school
- There will continue to be a balance between community and faith schools
- The school to be expanded can continue to provide high quality education services.

What happens next?

Once we have gathered the views of staff, parents, carers and residents, elected councillors will consider the responses and make a decision about whether to expand William Hogarth. If they decide to expand William Hogarth, official notices will need to be published and there would then be a four-week period for anyone to comment. After this, the councillors will make a final decision whether to expand the school.

The process for St Mary's is slightly different. This is because it is a Church school and so the school (supported by the Diocese) would consider the responses from this consultation and make the initial decision whether to publish official notices. It would still be Hounslow's elected councillors who would decide whether to expand the school after the official notices are published.

THE REASONS FOR OUR PROPOSALS

We are proposing to expand the following two schools in the Chiswick area:

- William Hogarth from 30 Reception places a year to 60 Reception places a year from September 2011
- St Mary's from 30 Reception places a year to 60 Reception places a year from September 2012.

Expanding these schools would provide enough places to meet the projected demand, and increasing the schools' intake from 30 places a year to 60 will help to ensure that the local schools in Chiswick remain similar sizes.

The two schools are adjacent to each other and share the same overall site with other services. Their location in the centre of Chiswick increases the flexibility to meet local demand for places.

We will not only look at ways to expand the number of school places in Chiswick, but also at how we can improve the school buildings and facilities at the same time for the benefit of both learners and the local community.

This could include improving play and sport facilities, potentially in partnership with the Hogarth Charitable Trust (which runs the Youth and Community Centre on the site). We would also look at how the schools could work more closely together to share facilities to ensure that as much open space as possible is retained. We need to plan both projects together to ensure that we make

8 best use of the site for all the existing and future users.

QUESTIONNAIRE

Questionnaire on the proposal to increase school places

We are asking parents, carers and residents to give us their views about the way we want to increase school places in the Chiswick area.

We need your views by **24 July 2009**.

Responses can be posted or sent via our website: www.hounslow.gov.uk/consultations

**1 How do you feel about the proposal to expand
The William Hogarth Primary School with effect
from September 2011?**

Strongly in favour In favour Opposed
 Strongly opposed No view

**2 How do you feel about the proposal to expand
St Mary's Catholic Primary School with effect
from September 2012?**

Strongly in favour In favour Opposed
 Strongly opposed No view

**3 Why do you have these views and are there
any comments about these proposals that you
wish to make?**

(please state which school you are referring to)

4 Are there any other options you think the council and/or the Governing Body should consider?

In what capacity are you filling in this questionnaire ?

Pupil (School):

Parent/Carer (School):

Staff member (School):

Governor (School):

Local resident:

Other (please state)

Your Postcode:

**STAMP
REQUIRED**

CHISWICK SCHOOLS CONSULTATION

Children's Services and Lifelong Learning
London Borough of Hounslow

Civic Centre

Lampton Road

HOUNSLOW

TW3 4DN

The reasons for expansion of William Hogarth are:

- It is a rapidly improving school as shown by the 2008 Key Stage 2 results and recognised by Ofsted
- The school has successfully accommodated a bulge class in 2008 and will accept another in 2009
- The school's location gives flexibility in demand for places north and south of the A4
- Demand for places from the school's catchment area is already higher than the admission number of the school and we think it will increase further.

The reasons for expansion of St Mary's are:

- It is consistently over-subscribed with Catholic applications and Ofsted judge it a 'good school with a number of outstanding features'
- Baptism data suggests sufficient demand to support 60 Reception places a year (2 forms of entry) to serve the two parishes (Grove Park and Chiswick)
- Expansion of the school would enable more Catholic families from across Chiswick to be able to choose a faith education if they wish to.

The expansion of St Mary's is proposed for a year after William Hogarth, as we need longer to develop the building project for this school. This is because we need to ensure we can address any legal and planning considerations before we would be able to confirm the expansion of the school.

HOW TO HAVE YOUR SAY

We are seeking views on these proposals. You can have your say by:

- Completing the questionnaire and sending it back to us either by post or online
- Attending one of the meetings or drop-in session that have been arranged:

Public meeting	St Mary's Catholic Primary School Duke Road, Chiswick W4 2DF	Wed 1 July 7pm
Public meeting	The William Hogarth Primary School Duke Road, Chiswick W4 2JR	Thurs 2 July 7pm
Drop-in session	Belmont Primary School Belmont Road, Chiswick W4 5UL	Wed 8 July 3 to 4:30pm



Frequently asked questions

How accurate are the projections ?

Our pupil projections are developed from birth rate data and trends, approved and expected housing developments, and from migration information. We use data from national government and the Greater London Assembly. Historically our forecasts have been accurate. Projections are always only our best estimate of the future. However, in this case it is important that we are prepared for a potential large expansion in demand for primary school places. Many other London boroughs have reached similar conclusions and are also expanding primary schools.

Demand for Catholic places is projected by Westminster Diocese using the number of baptisms in the local parish(s) and additional community/migration information.

How were the schools selected for expansion ?

Schools were selected based on a range of criteria to ensure their suitability. These included:

- The location of the school in relation to where birth rates have risen or housing is expected
- The demand for places from parents and the types of places desired
- School standards and the progress made by pupils in the school
- The feasibility of expansion on the existing school site
- The expected affordability of any necessary building project
- The potential size of the expanded school was also considered to reflect best practice within the borough.

How will the economic climate affect your forecasts ?

We do not know whether the economic climate will have an impact on birth rates. The number of new flats and houses that are built in the next few years may be affected, but the long term projection is still for more housing to meet demand. The children who will start school until 2012 have already been born so we know that we must ensure sufficient school places for them.

Expanding William Hogarth and St Mary's will require more space to accommodate more children. Who will pay for this and when will the work be finished ?

We have undertaken initial studies to consider how the additional accommodation could be provided. Hounslow Council and Westminster Diocese are keen to ensure that any building projects improve the overall coherence of the site. This would probably involve sharing some facilities between the schools in order to preserve as much external space as possible. We would also investigate the potential to provide improved play and sports facilities, potentially by working in partnership with the Hogarth Charitable Trust (who run the Youth and Community Centre on the site) - this could improve facilities for learners and the community.

The council is given capital funding for schools and this will be a priority in our work; our capital funding is limited however, and we have to ensure that our expansion projects are affordable. For St Mary's, as a church school, the Diocese would be involved and Governors are expected to make a contribution to the scheme.

When would the changes come into effect ?

The changes would come into effect for the Reception entry in September 2011 for William Hogarth. We would like to have the changes agreed in time to be included in the admissions information for parents that is published in September 2010.

For St Mary's, the change would come into effect for the Reception entry in September 2012 and we would want to have the changes agreed in time to be included in the admissions information that is published in September 2011.

Would the admission arrangements change ?

It is not proposed to alter admission arrangements for William Hogarth. The council and Westminster Diocese are strongly encouraging the Governors of St Mary's to revert to a tie-breaker based on distance as part of the expansion of the school.

What happens to the schools that are not expanded ?

The schools that are not expanded would continue at their current size. Currently all the schools in Chiswick are almost full and we expect this to continue.



Have you considered building one or more new schools instead of expanding existing schools ?

The option of building a brand new school to provide some of the additional places needed has been considered and for a number of reasons the preferred option is to make additional places available at existing schools.

The main reasons are:

- It is very hard to find sites for new schools in the borough without a serious impact on current open spaces and green belt
- It is less costly to build an extension to an existing school than a completely new school because many facilities will already exist and will not need to be changed, and therefore offers better value for money
- If in the future there is a downturn in population, it is easier to reduce the size of a school than to close it completely
- Establishing a new school takes considerably longer to implement than expanding an existing school and there is greater uncertainty for the community during this process.

Notes

Children's Services and Lifelong Learning
London Borough of Hounslow
Civic Centre, Lampton Road
Hounslow TW3 4DN
Telephone: 020 8583 2600
Fax: 020 8583 2613

www.hounslow.gov.uk

Translations and accessible formats:

ترجمے کی مفت سہولت اور باہمی زبانوں کی مکتوبی خدمات

अनुवाद की मुफ्त सेवा उरजमे दी भुडड सेवा

020 8583 2299



Communications. June 2009