

TUBERCULOSIS

A fact sheet on Tuberculosis in the London Borough of Hounslow.

1 Epidemiology

A data set of TB notifications from between 2007 and 2010 in Hounslow and aggregate data for North West London was provided by the Health Protection Agency NWL Health Protection Unit. This comprises a total of 633 records; 136 in 2007, 134 in 2008, 172 in 2009, 191 in 2010.

Figure 1: Tb notification rates for Hounslow PCT: 2007 to 2010. The filled circles are the directly age standardised rate for Hounslow PCT at each time point, the filled triangles are the rates for North West London. The solid yellow bars show the 95% C.I. around the Hounslow estimate, the grey bars are the 95% C.I. for the North West London estimate. Population estimated using ONS mid year estimates for 2010 Wards in England and Wales by Quinary Age and Sex, and Working Age and ONS estimates of resident population of England.

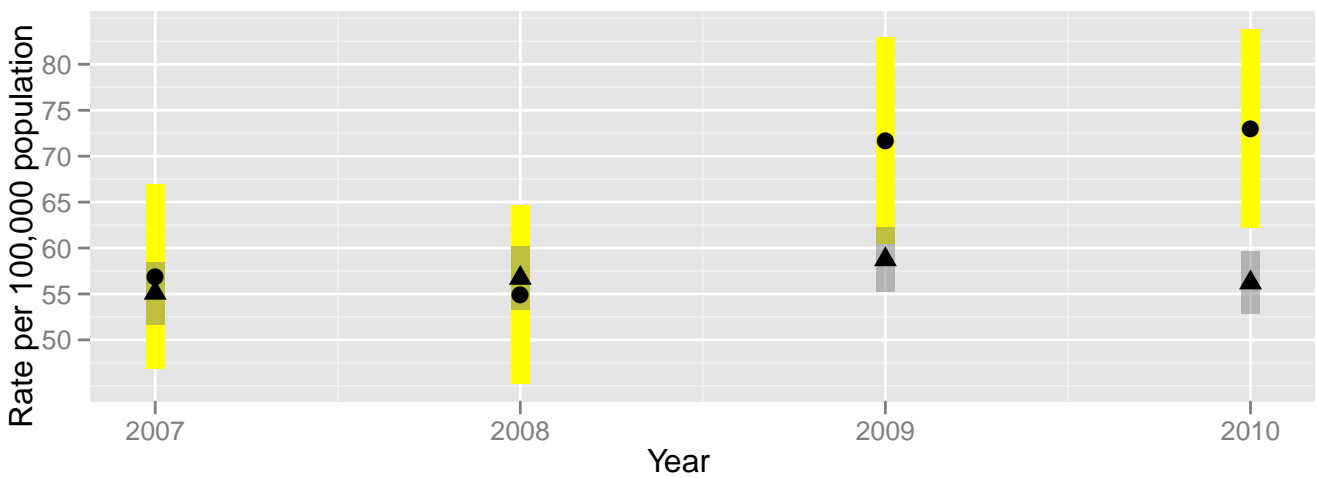


Figure 2: a) Distribution of patient’s ages at the time of notification by gender: pooled data 2007 to 2010 and b) counts of Tb notifications by whether the patient was born in the UK by year 2007 to 2010

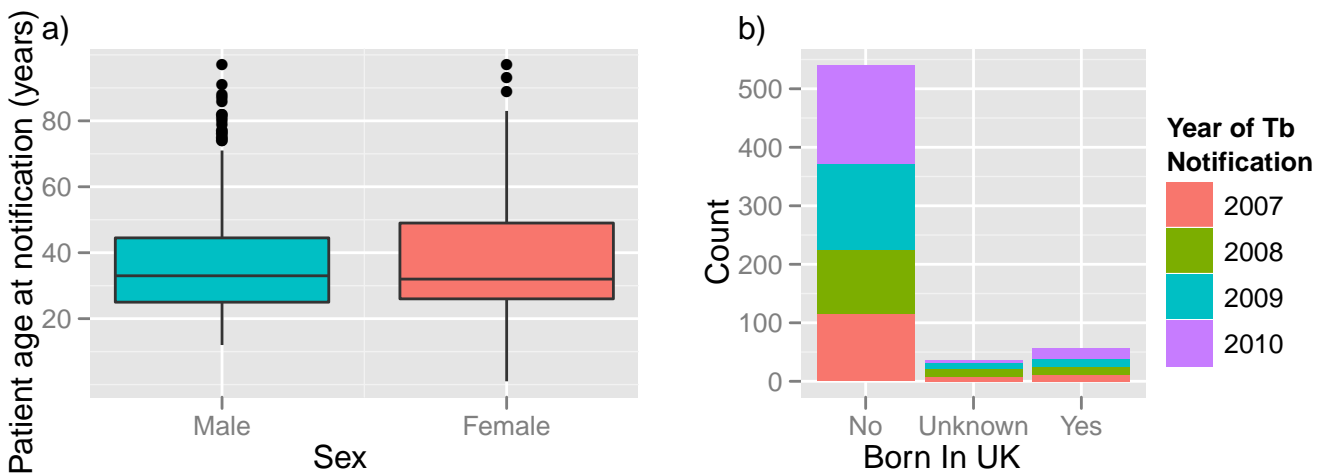


Figure 3: Tb notification by Ethnicity: pooled data 2007 to 2010. a) Raw counts, b) Directly Standardised Rates per 100,000 population. Population estimates used Office for National Statistics Population Estimates by Ethnic Group Mid-2009 for Primary Care Organisations

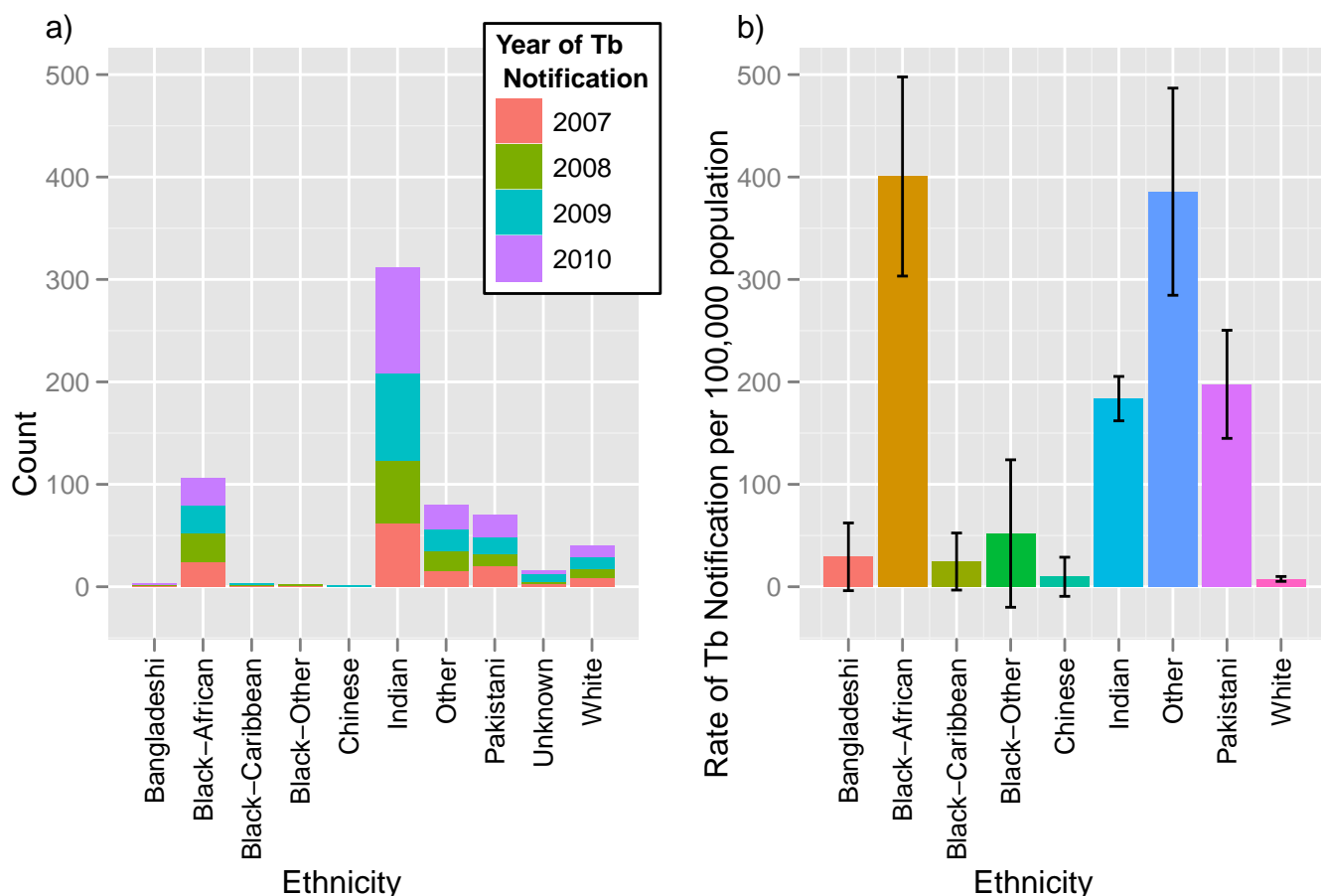


Table 1: Health Acorn Characteristics of population types significantly over represented in the notified population

Health Acorn Type	Characteristics	% of type notified	% of type Hounslow
4.3 Students and young professionals, living well	Young people with the lowest levels of heart disease, diabetes and arthritis. High proportions of these populations walk or cycle to their place of work.	5.4	2.8

Figure 4: Tb notification by age: pooled data 2007 to 2010. a) Raw counts, b) Crude Rate per 100,000 population. Data: Population Ward Level mid-year population estimates for England and Wales (experimental), 2010 Wards and Population Estimates for UK, England and Wales, Scotland and Northern Ireland

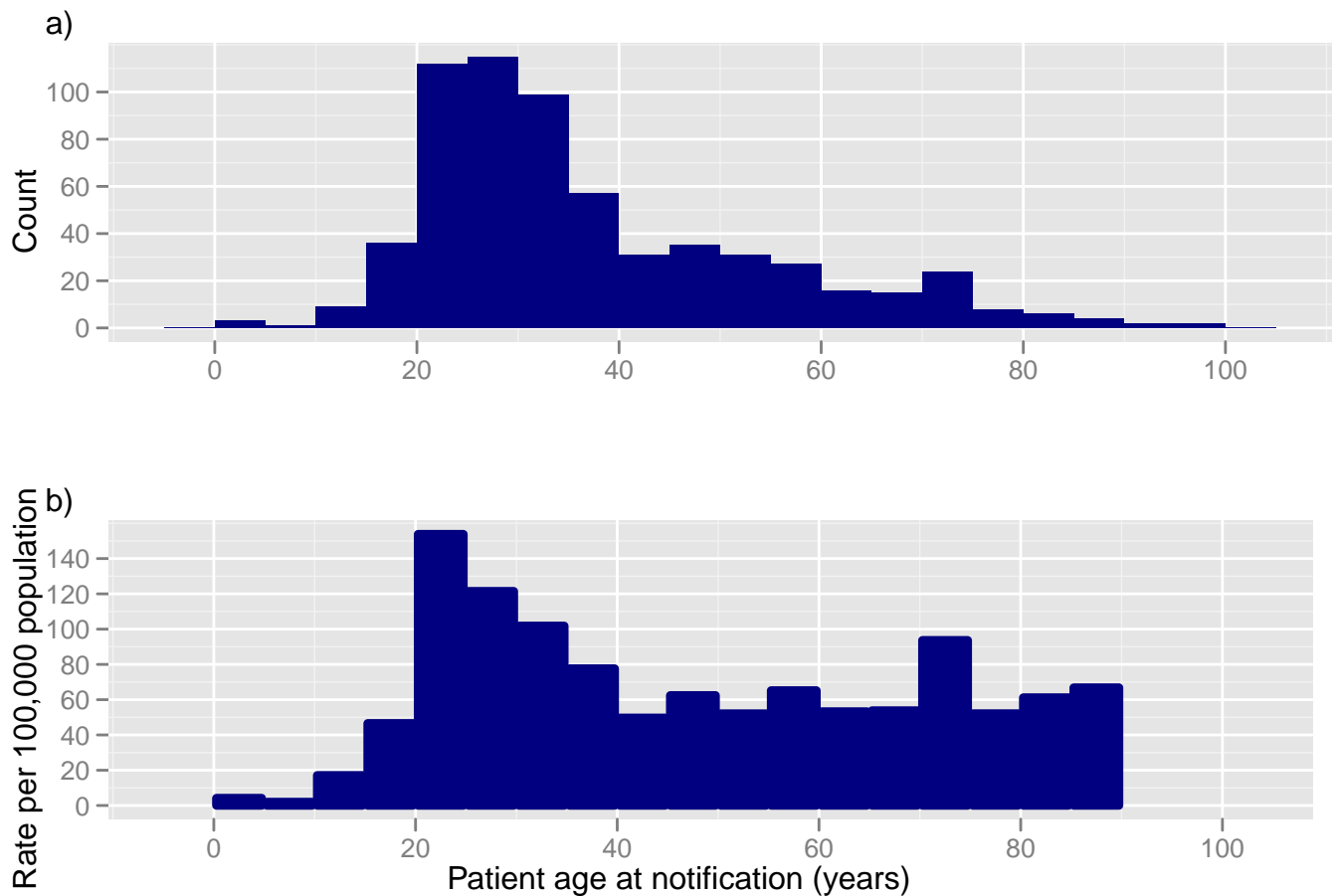


Figure 5: Distribution of years elapsed between arrival in the UK and the time of notification: pooled data 2007 to 2010

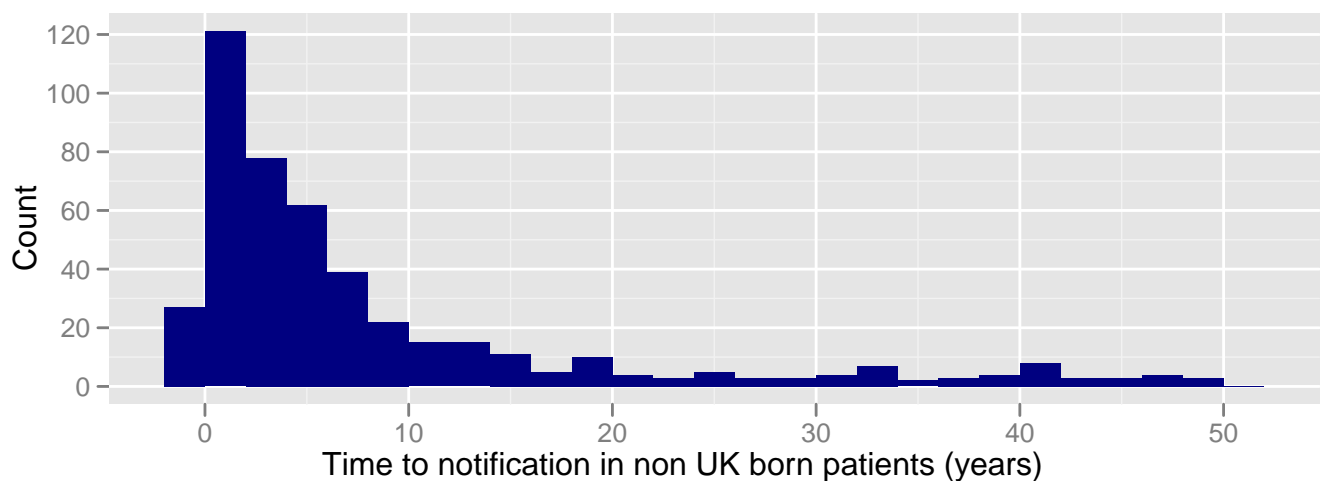


Table 2: Treatment Outcomes 2007 to 2009 pooled

Treatment Outcome	N	%
Completed	421	80.8
Died	23	4.4
Lost To Follow-Up	18	3.5
Transferred	49	9.4
Treatment Stopped - Other	6	1.2
Unknown	4	0.8
Grand Total	521	100.0

Figure 6: Directly standardised mortality rates for tuberculosis per 100,000 population: 2002 to 2009. Data: Office for National Statistics Public Health Mortality Files; Population: Office for National Statistics Super Output Area mid-year population estimates for England and Wales

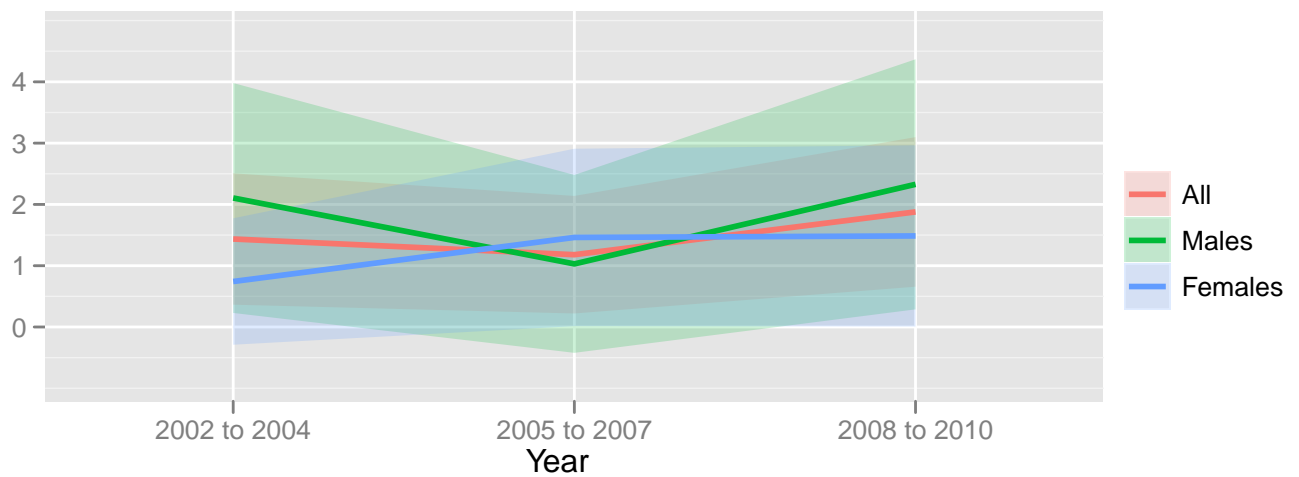


Figure 7: Directly standardised rates of Tb notification by Hounslow ward: 2007:2010. Data: Population Ward Level mid-year population estimates for England and Wales (experimental), 2010 Wards and Population Estimates for UK, England and Wales, Scotland and Northern Ireland

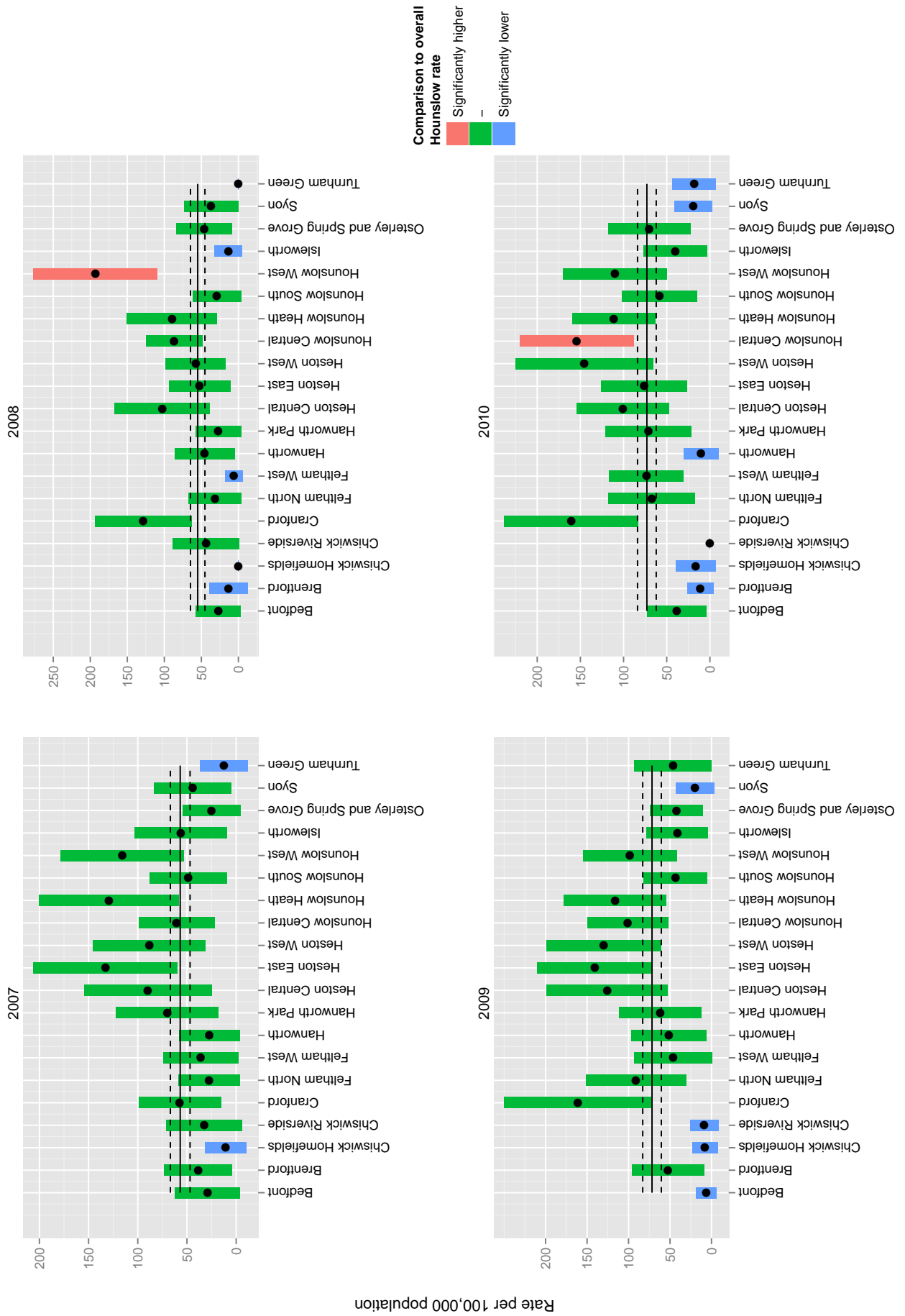


Figure 8: Map of rates of Tb notification among Hounslow residents by ward: 2007 to 2010. Data: Population Ward Level mid-year population estimates for England and Wales (experimental), 2010 Wards and Population Estimates for UK, England and Wales, Scotland and Northern Ireland

