

STROKE

A fact sheet on Stroke and Transient Ischaemic Attacks in the London Borough of Hounslow.

1 Primary care data

Figure 1: Guide to interpreting spine plots

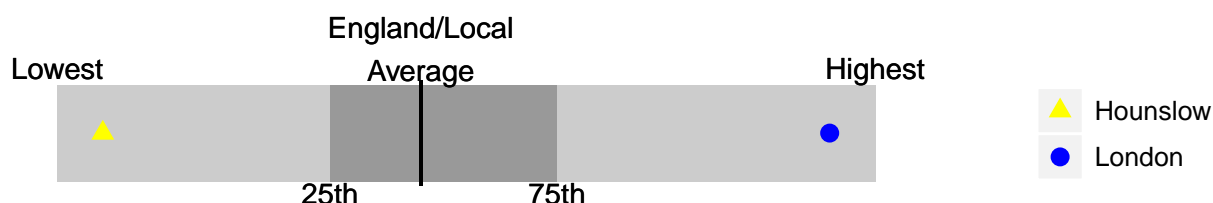
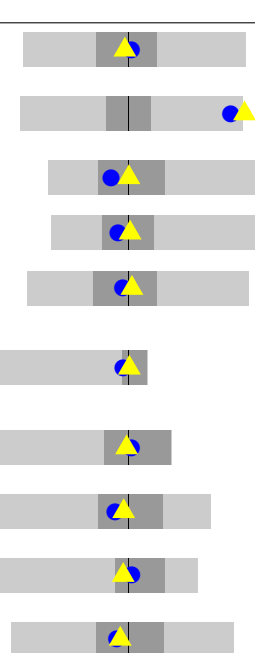


Table 1: Spine plot of the prevalence of Stroke and achievement against key Quality and Outcomes Framework indicators. Data: QOF returns 2009/10. Expected numbers of individuals who have had Strokes were derived from Association of Public Health Observatories (APHO) Modelled estimates of prevalence of disease by PCT

Domain	Hounslow	London	England Lowest	England Average	England Highest
Prevalence (% of population)	1.0	1.0	0.7	1.7	2.4
Indirectly Standardised Rate per 10,000 population	128.8	122.3	85.0	146.4	191.1
Number of new Stroke patients per 1000 population	2.1	1.9	1.2	2.8	4.9
STROKE 13 - New stroke patients referred onto specialist assessment (%)	92.0	89.3	83.0	90.1	97.0
STROKE 5 - Blood pressure taken (%)	96.0	96.4	95.0	96.8	98.0
STROKE 6 - Blood pressure is ≤ 150/90 (%)	89.0	87.9	83.0	88.0	94.0
STROKE 7 - cholesterol measured (%)	89.0	90.3	86.0	91.2	94.0
STROKE 8 - cholesterol measured at ≤ 5mmol/l (%)	76.0	75.3	70.0	77.1	84.0

Table 2: Spine plots of variation in prevalence of Stroke and achievement against key Quality and Outcomes Framework indicators across current Hounslow GP practices. Data: QOF returns 2009/10. Expected numbers of individuals who have had Strokes were derived from APHO Modelled estimates of prevalence of disease by PCT

Domain	Hounslow	London	Practices Lowest	Practices Average		Practices Highest
Prevalence % of GP registered population	1.0	1.0	0.2	1.0		1.9
Indirectly Standardised Rate per 10,000	128.8	122.3	22.0	73.7		128.2
Prevalence of Diabetes mellitus (%)	6.0	5.2	2.6	6.0		12.0
Prevalence of Hypertension (%)	11.6	10.9	7.0	11.5		20.0
Number of new Stroke patients per 1000 population	2.1	1.9	0.0	2.0		4.4
STROKE 13 - New stroke patients referred onto specialist assessment (%)	92.0	89.3	0.0	91.8		100.0
STROKE 5 - Blood pressure taken (%)	96.0	96.4	80.0	96.2		100.0
STROKE 6 - Blood pressure is ≤ 150/90 (%)	89.0	87.9	72.0	89.7		100.0
STROKE 7 - cholesterol measured (%)	89.0	90.3	67.0	89.8		100.0
STROKE 8 - cholesterol measured at ≤ 5mmol/l (%)	76.0	75.3	53.0	77.8		100.0

2 Secondary Care

Figure 2: Age distribution of individuals who have suffered strokes in Hounslow

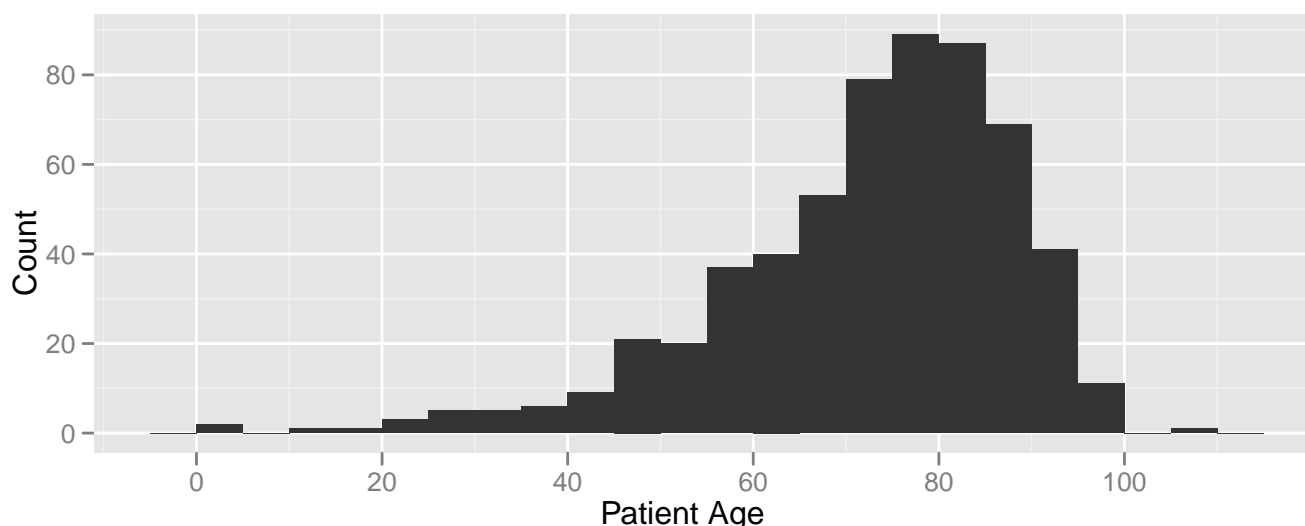


Table 3: Stroke inpatients - emergency admissions where Stroke is the primary diagnosis¹: April 2007 to March 2011. Data: Secondary Uses Service

Domain	2007/08	2008/09	2009/10	2010/11
Number of admissions	185	148	176	216
% Emergency admissions	100	100	100	100
Number of emergency admissions	175	139	163	200
Number of admissions where the patient dies	31	23	24	17
%	17.7	16.7	14.7	8.5
Directly Standardised Rate of admissions per 100,000 population	93.2(± 15.2)	88.1(± 14.8)	102.6(± 16.1)	129.7(± 18.1)
Mean/Median Length of Stay	19.3/ 9	24.5/12	21.4/ 8	9.4/ 4
Min/Max Length of Stay	0/121	0/204	0/423	0/106
% Male	48	54.3	48.1	55
Mean/Median age of admitted patients	68.9/73	71.1/75	71.9/76	73.3/75
Min/Max age of admitted patients	11/ 97	0/ 96	1/ 96	29/106
No of records missing NHS numbers	7	9	15	44
No of individuals admitted	163	124	143	149
Mean/Median admissions per individual	1/1	1/1	1/1	1/1
Max no. of admissions per individuals	2	2	2	2
Total Costs £'000s	659.8	601.9	870.1	840.2

¹The following ICD-10 codes were used in defining an admission with a diagnosis of Stroke - I60 - I64


²The following ICD-10 codes were used in defining an admission with a diagnosis of a fall - W00 - W19

Table 4: Falls²following strokes - emergency admissions: April 2007 to March 2011. Data: Secondary Uses Service

Domain	Count
Number of admissions	76
% Male	46.6
Mean/Median Length of Stay	14.6/1
Min/Max Length of Stay	0/149
Mean/Median age of admitted patients	82.2/84
Min/Max age of admitted patients	53/96
No of individuals admitted	47
Mean/Median admissions per individual	1.6 1
Max no. of admissions per individuals	6
Total Costs £'000s	256.9

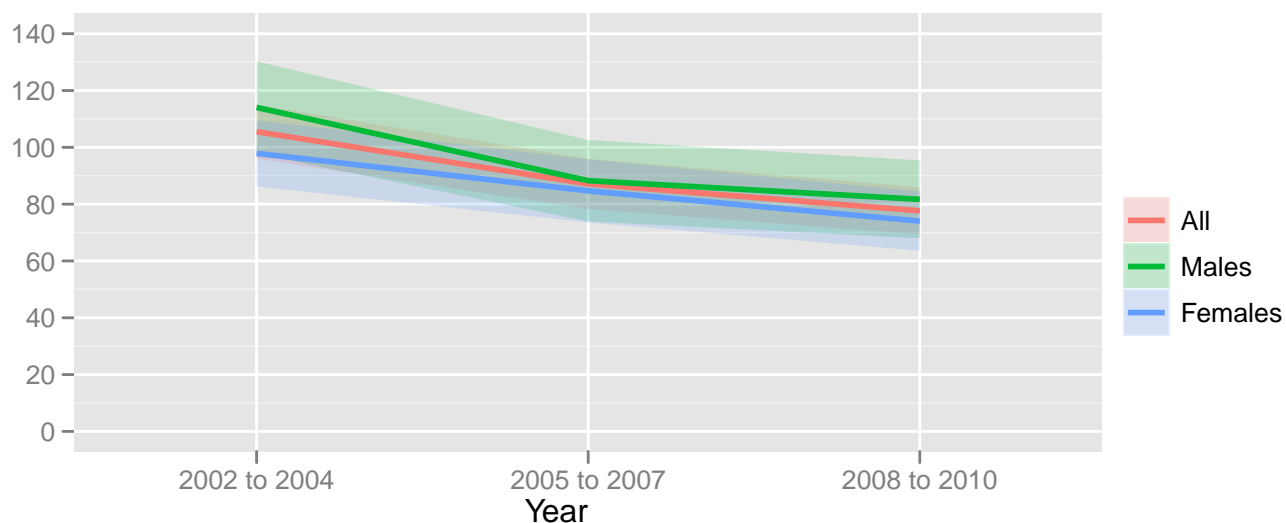
3 Prescribing for stroke: National

Table 5: Spine plots of the costs of Anti Platelet and Lipid Regulating drugs prescribed per capita of PCT: National data 2009/10. Data: NHSBSA Prescription Services through NHS iView

Domain	Hounslow	London	England Lowest	England Average		England Highest
Cost of antiplatelet drugs	2.81	2.41	1.47	3.24		5.59
Cost of lipid regulating drugs	7.60	7.55	5.00	9.65		17.11

4 Mortality

Figure 3: Trend in mortality due to Stroke³: Directly standardised rates per 100,000 population, 95% confidence intervals shown in the width of the line. Data: Office for National Statistics Public Health Mortality Files; Population: Office for National Statistics Super Output Area mid-year population estimates for England and Wales



³The following ICD-10 codes were used in defining mortality due to Stroke - I60 - I69

Figure 4: Trend in the Crude Years of Life Lost Rate due to Strokes: Crude rate per 10,000 population for 2002-2004 to 2008-2010 pooled data. Data: Office for National Statistics Public Health Mortality Files; Population: Office for National Statistics Super Output Area mid-year population estimates for England and Wales

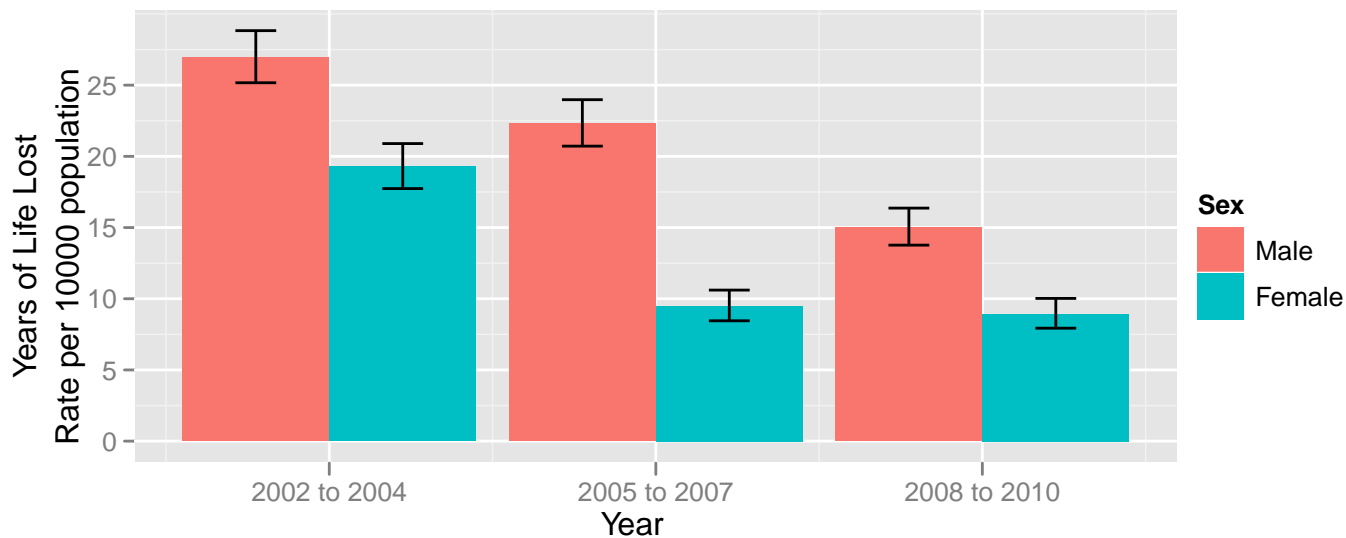


Figure 5: Age distribution of individuals who have died because of Stroke: 2002-2010 pooled data. Data: Office for National Statistics Public Health Mortality Files

